



We're planning a new way to ride

BROADWAY BUS CORRIDOR IMPROVEMENTS

Welcome!

We will begin in a few minutes

¡Bienvenidos!

Comenzaremos en unos minutos

Interpretation Available



- Click on the “Interpretation” icon
- Pick the language you would like to listen to, either English or Spanish
- To hear the interpreted language only, click “Mute Original Audio”



- *Haga clic en el icono de “Interpretation”*
- *Escoja la opción para escuchar en inglés o español*
- *Para escuchar solo español, haga clicen “Mute Original Audio”*

Meeting Format

Today's meeting is being recorded.



Attendee cameras are off and microphones are muted



During the presentation, questions can be submitted using the Q&A icon

Agenda

- > Paying to Ride Metro Just Got Easier
- > Next Gen Priority Lanes
- > Broadway Bus Corridor Projects
- > Broadway Bus Priority Lanes Project
- > Reconnecting Communities & Neighborhoods Bus Stop Improvements
- > Next Steps
- > Questions & Answers



Project Team Members

Tito Corona

Senior Manager, Community Relations, Bus Speed & Reliability Initiatives

James Shahamiri

Senior Director, Project Engineering, Shared Mobility

Nolan Borgman

Program Management, Reconnecting Communities & Neighborhoods

Lameese Chang

Project Manager, South Broadway Safety & Mobility Project, LADOT



Riding Metro is About to Get Even Easier

- > Regular fare riders can now tap a credit or debit card, Apple Pay or Google Pay to ride Metro.
- > Riders still receive two hours of free transfers and fare-capping benefits when using the same card or device.
- > TAP cards remain available and should still be used by Reduced Fare and GoPass riders.
- > Reduced Fare credit/debit payment is expected in 2027.



Metro Bus Priority Lanes

We're bringing
you a better
bus experience.

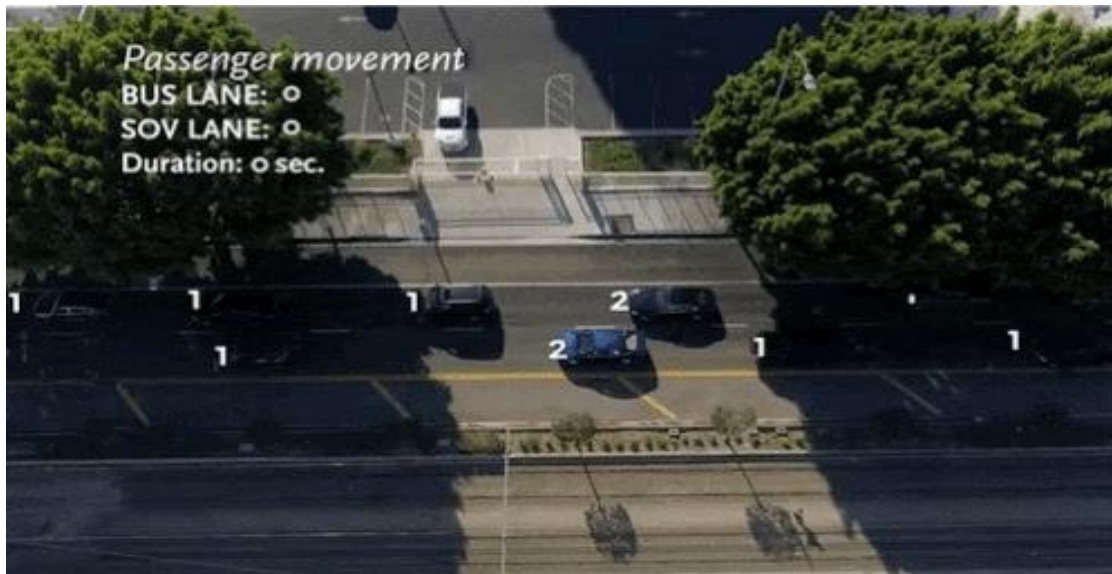


NextGen Bus Priority Lanes

Your Commute is About to Get Better

Bus Priority Lanes

These special lanes make buses go faster (**by up to 15%**), allow for more frequent and reliable service, and help move more people without building new roads or infrastructure.

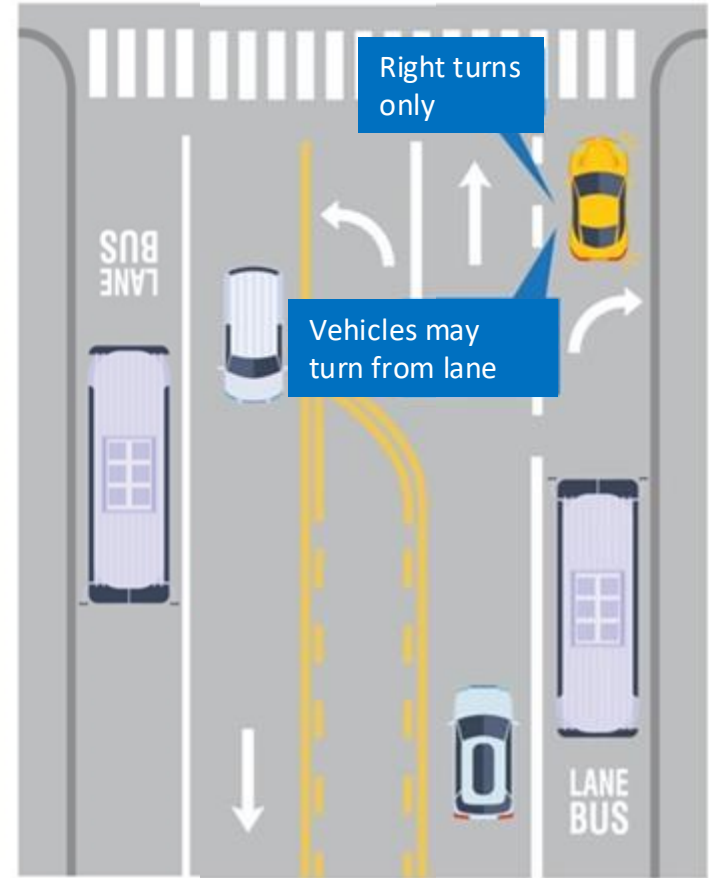


Video showing bus priority lane on Flower St.

How Bus Lanes Work

Bus Lanes

- Drivers can enter bus lanes to make right turns at driveways and intersections
- Bus lanes are marked with stripes only. No physical barriers anywhere.
- Access to parking, driveways and private property always maintained



Broadway Bus Corridor Projects

Ecosystem of Transportation & Surroundings

Metro oversees regional transportation and mobility projects

LADOT manages how people travel on city streets, including traffic operations, signals, parking, and street safety

StreetsLA maintains and repairs the city's streets, sidewalks, and related infrastructure

LASAN is responsible for cleanliness, waste services, and environmental health

MyLA311 connects residents with city services and helps submit requests such as pothole repair, graffiti removal, and trash pickup



Coordinated Broadway Improvements

Metro Broadway Bus Corridor Improvements - Four miles of shared *bus/bike lanes* from Cesar Chavez Av to Martin Luther King Jr Bl

Metro Reconnecting Communities & Neighborhoods (RCN) - *Bus stop enhancements* between 1st St and Manchester Bl

LADOT South Broadway Safety and Mobility Project – 3.5 miles of *safety upgrades*, including shared *bus/bike lanes*, between Martin Luther King Jr Bl and Manchester Bl



A Better Rider Experience

- > Overall integrated improvements
- > ~8 miles of bus lanes, bikeway and corridor enhancements



Broadway Bus Priority Lanes Project

Broadway Bus Corridor Improvements

Scope of Improvements

- **~8 miles** from Cesar Chavez Av to Manchester Ave
- **Full-time bus lanes** in each direction
- Possible parking removal for left-turn pockets
- Some left turn restrictions
- Enhanced transit signal priority (NextGen)
- Bus stop upgrades at 20 sites with other projects

Bus Service and Ridership

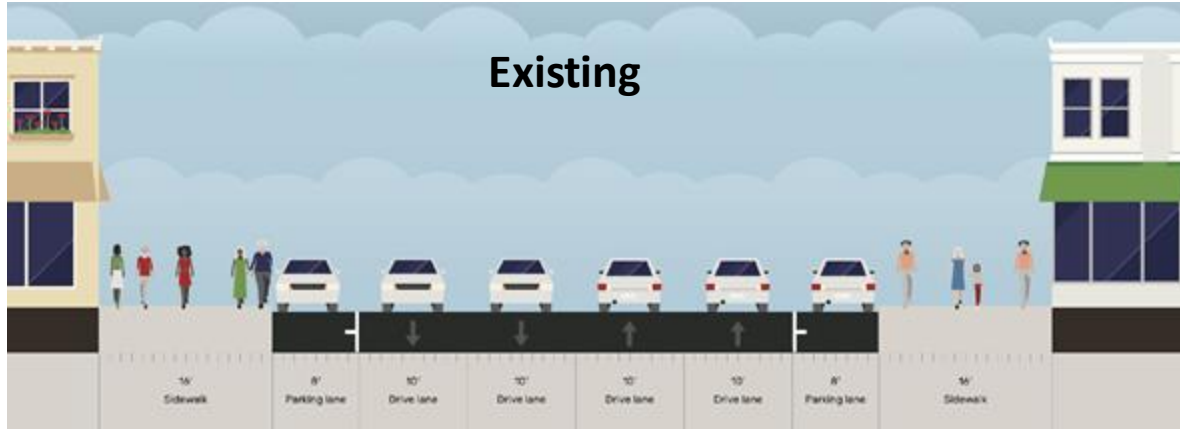
- Serves up to **four Metro lines** and **three LADOT Commuter Express lines**
- **Peak hours:** buses operate every 2–10 minutes in each direction
- **Ridership:** 58,000 weekday boardings across all Metro lines serving Broadway



Typical Cross Sections

Martin Luther King Jr Bl to 11th St

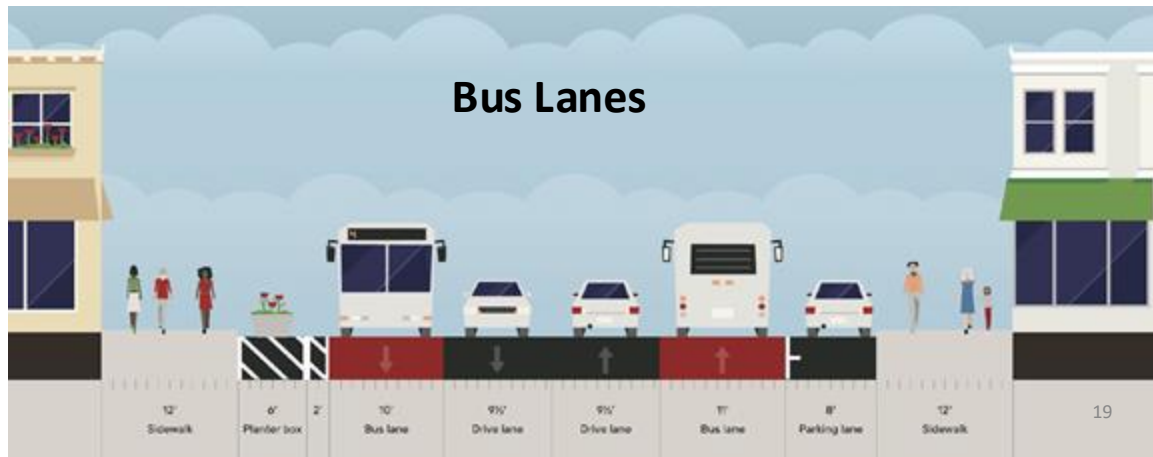
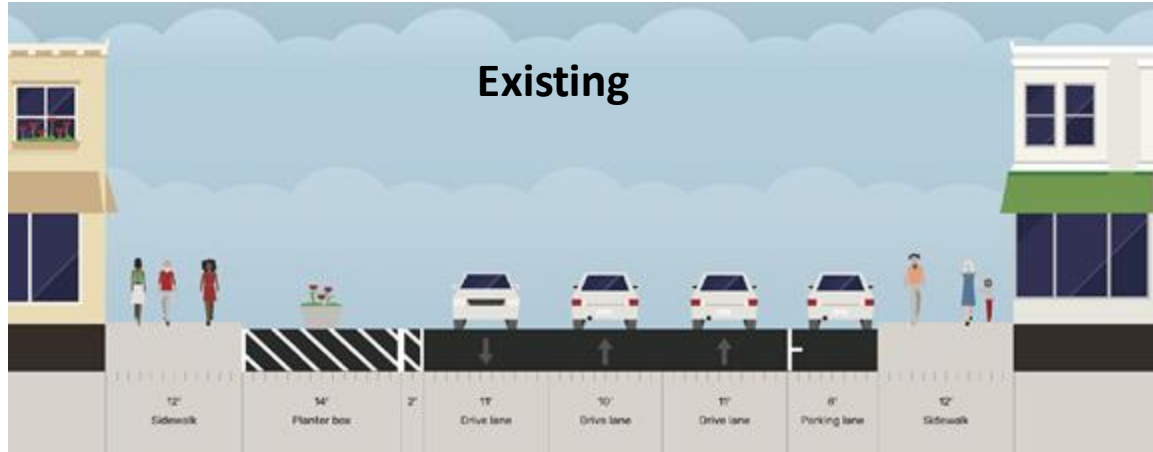
- Provides full-time bi-directional bus lanes
- Provides a single through lane in each direction
- No changes to parking, except to address left turns at some intersections
- At minor intersections with no existing left turn pockets, will evaluate operations with LADOT. May result in:
 - Adding left turn pockets by removing parking on intersection approaches
 - Prohibit left turns



Typical Cross Sections

11th St to 2nd St

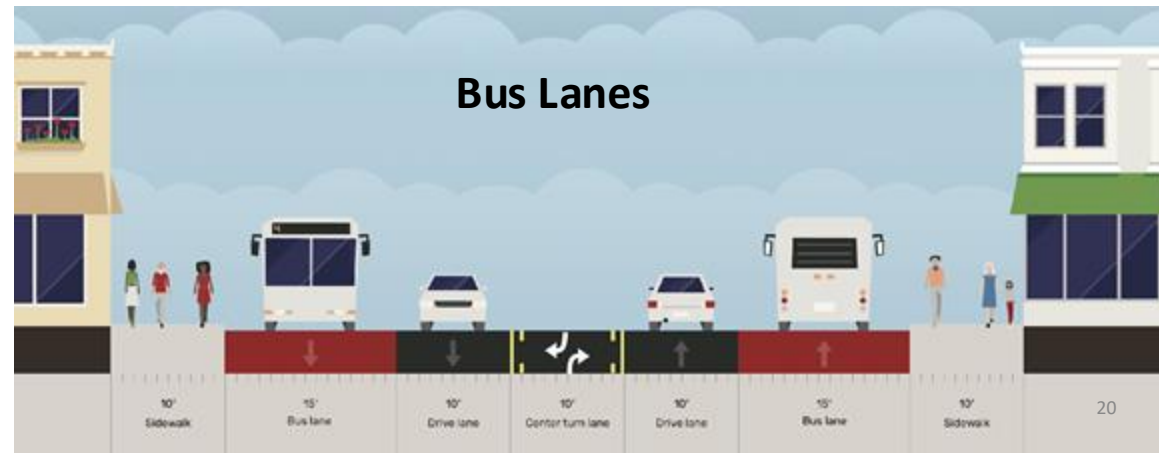
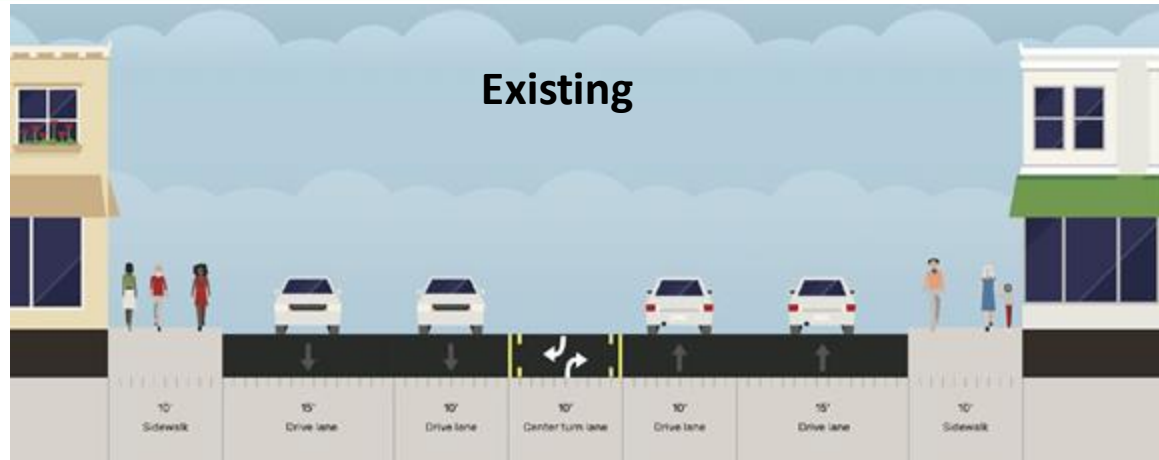
- Adds a fourth lane to restore bi-directional bus service along Historic Broadway
- Provides full-time bi-directional bus lanes
- Restores southbound bus stops
- Narrows existing Broadway Dress Rehearsal painted sidewalk extensions from 14' to 6'
- Opportunities to add/relocate commercial and passenger loading zones
- Northbound left turn prohibitions at all intersections where left turns are currently allowed



Typical Cross Sections

2nd St to Cesar Chavez Av

- Provides full-time bi-directional bus lanes
- Restores southbound bus stops
- Provides at least one through lane in each direction
- No changes to parking
- No changes to left turns



Reconnecting Communities & Neighborhoods Bus Stop Improvements

Broadway Bus Corridor Improvements

- 20 coordinated locations include:
 - Bus shelters
 - Sidewalk repairs (location-specific)
 - ADA curb ramp
 - Pedestrian lighting
 - Street trees
 - Wayfinding



BUS STOP (Primary Locations)

SB BROADWAY / MANCHESTER

NB BROADWAY / 83RD

NB BROADWAY / FLORENCE

SB BROADWAY / FLORENCE

NB BROADWAY / GAGE

SB BROADWAY / GAGE

SB BROADWAY / SLAUSON

NS BROADWAY / SLAUSON

SB BROADWAY / VERNON

NB BROADWAY / VERNON

NB BROADWAY / MARTIN LUTHER KING JR

SB BROADWAY / MARTIN LUTHER KING JR

SB BROADWAY / WASHINGTON

NB BROADWAY / WASHINGTON

NB BROADWAY / VENICE

SB BROADWAY / 11TH

SB BROADWAY / BETWEEN 8TH AND 7TH

NB BROADWAY / 7TH

NB & SB BROADWAY / 4TH

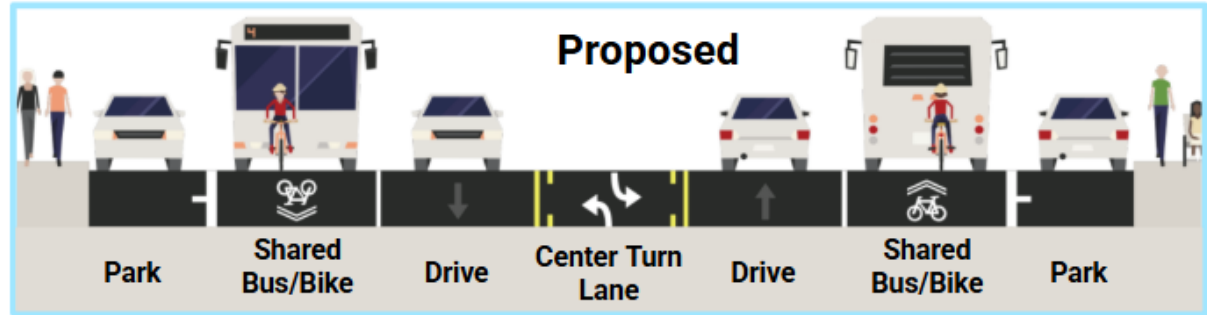
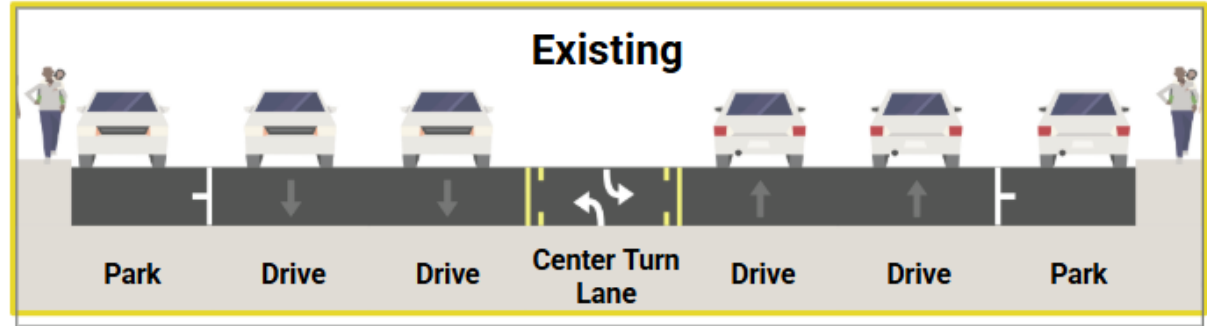
NB BROADWAY / 2ND

South Broadway Safety & Mobility Project

Los Angeles Department of Transportation

South Broadway Safety & Mobility Project

- Converts one travel lane in each direction to a shared/bus bike lane
- Maintains curbside parking on both sides
- Maintains existing center turn lane and left turn pockets



Next Steps

Broadway Corridor Delivery Timeline

Bus Speed and Reliability Initiatives (BSRI) Bus Priority Lanes

Bus Corridor Improvements (Funded by Reconnecting Communities and Neighborhoods Grant)

Spring/Summer
Stakeholder Briefings & Presentations,
Community Meetings

Winter/Spring
Construction Start
Outreach & Notification

Winter/Spring
Operations



2026

2027

2028

Spring/Summer
Stakeholder Briefings,
Presentations and
Community Meetings

All year
Construction and
outreach & notification
(specific project
construction schedule
durations vary)

Winter/Spring
Construction float

Summer
2028 Olympic and
Paralympic Games



ONGOING PUBLIC PARTICIPATION

**Subject to change*



Upcoming Community Meetings



LADOT Community Meeting (In-Person)

South Broadway Safety and Mobility Project

Thursday, June 11 | 6pm

IGLESIA KOINONIA

5606 S Broadway, Los Angeles, CA 90037

RSVP TODAY: bit.ly/BroadwayStreetsAndEats

Stay Connected



Tito Corona

Senior Community Relations Manager

Project Hotline



213.922.4869



broadway@metro.net



metro.net/broadway

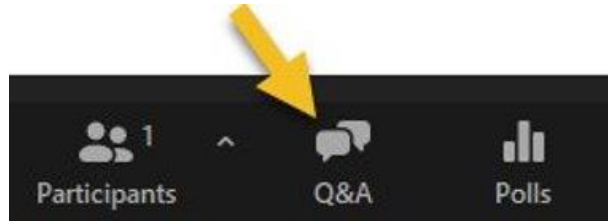


Questions & Answers

Questions & Answers



Questions and feedback may be submitted using the **Q&A** function at the bottom of the Zoom screen.



Thank you for asking questions with respect and kindness.

Stay Connected



Tito Corona

Senior Community Relations Manager

Project Hotline



213.922.4869



broadway@metro.net



metro.net/broadway



Thank You