

Welcome!

We will begin in a few moments.



Metro



We're working to improve the 5 in North County.

I-5 NORTH COUNTY ENHANCEMENTS PROJECT



THANK YOU



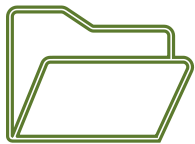
Housekeeping



This is a webinar. Attendee cameras are off, and microphones are muted.



Submit your questions by using the Q&A feature



This meeting is being recorded. Video file will be posted on our website at metro.net/i-5-enhancements.

Welcome! Thank you for joining us.

15 min	Metro Agency Updates & Project Overview	Chloe Lee , Principal Community Relations Officer Metro
30 min	Upcoming Construction Activities	Saroya Sandiford , Community Relations Manager Metro Cynthia Unzueta , Contractor Communications Manager OHLA-USA
25 min	Q&A / Discussion	Chloe Lee , Principal Community Relations Officer Metro



METRO AGENCY UPDATES

Know Your Rights As An Immigrant



AS AN IMMIGRANT, YOU HAVE RIGHTS!

Get support, legal services and protections.

COMO INMIGRANTE, ¡USTED TIENE DERECHOS!

Obtenga apoyo, servicios legales y protecciones.

320 W. Temple St.
Room G10
Los Angeles, CA
90012

800-593-8222

oia.lacounty.gov



- All immigrants, regardless of status, are entitled to basic rights and protections under the law. Understanding these rights is the first step toward safety, empowerment, and accessing essential resources.
- Key Support Services Available:
 - Free or low-cost legal services
 - Language-accessible assistance
 - Resources for navigating immigration issues
 - Protection from fraud, discrimination, and abuse
- oia.lacounty.gov

KEEP IT COOL ON THE MOVE

GET YOUR FREE GUIDE

SCAN HERE FOR:

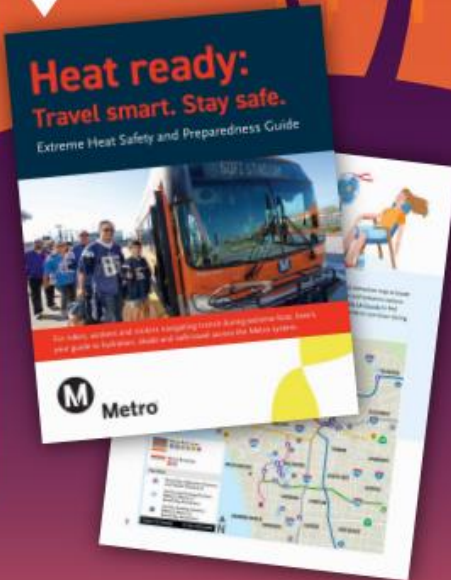


SCAN ME

 Cooling Stations

 Heat Safety Tips

 Hydration Resources



Metro is helping riders stay safe during extreme heat through the **Beat the Heat** campaign. Before your next trip, scan the QR code to access Metro's **Heat Awareness Guidebook**, where you can find cooling stations, hydration resources, heat safety tips and information about signing up for heat and weather alerts.

This guide is especially helpful if you are riding during the hottest part of the day, transferring between buses or trains, attending a major event or traveling with children, older adults or anyone more sensitive to heat. The information is available online and can be translated into multiple languages using the page's translation feature.

Take a minute before you travel: scan the code, review nearby cooling and hydration resources, sign up for alerts and plan your trip with heat safety in mind. Staying informed can help you ride Metro more comfortably and safely during hot weather.

Stay Connected with Metro Updates



STAY CONNECTED
WITH METRO
UPDATES



SERVICE CHANGES
AND RIDER ALERTS



COMMUNITY EVENTS
AND MILESTONES



PROJECT UPDATES
ACROSS THE REGION



RESOURCES THAT
HELP YOU PLAN
AHEAD

Visit the Website:

- <https://metro.net>

Friday Email:

- <https://gometro.la/friday>

The Newsletter

- <https://gometro.la/Newsletter>



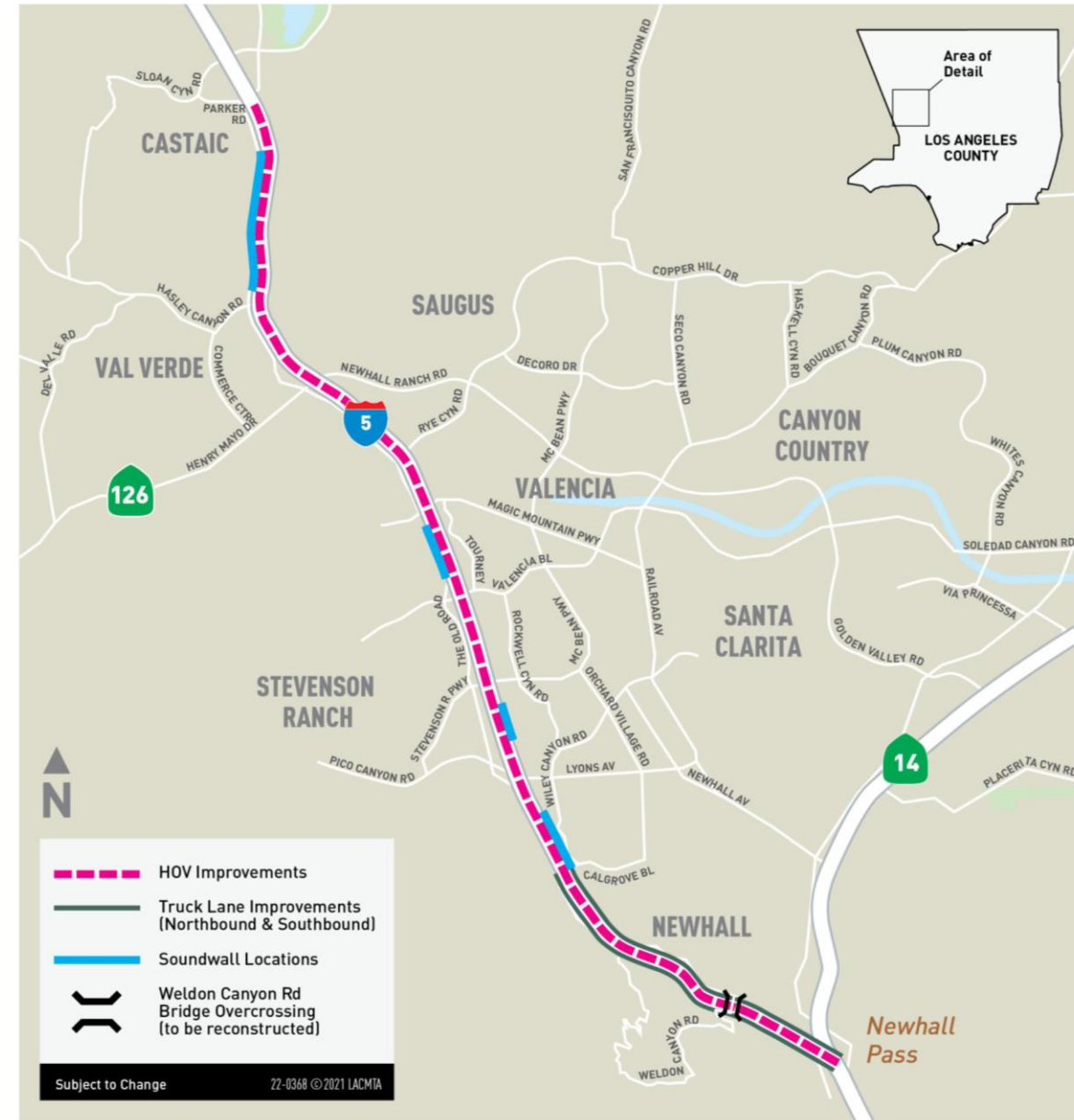
PROJECT OVERVIEW

Project Overview

Enhancements on I-5 between the SR-14 interchange and Parker Road in Castaic, along with Intelligent Transportation System (ITS) improvements on I-5 between I-405 and I-210.

The scope of work includes:

- 14-miles of HOV/carpool lanes in each direction
- Four (4) sound walls segments (12 sound walls)
- Replacement of Weldon Canyon Rd bridge
- Seven (7) bridge extensions
- Extension of truck lanes
- 13.6-miles of median paving
- 43 Retaining walls
- Intelligent Transportation System Improvements



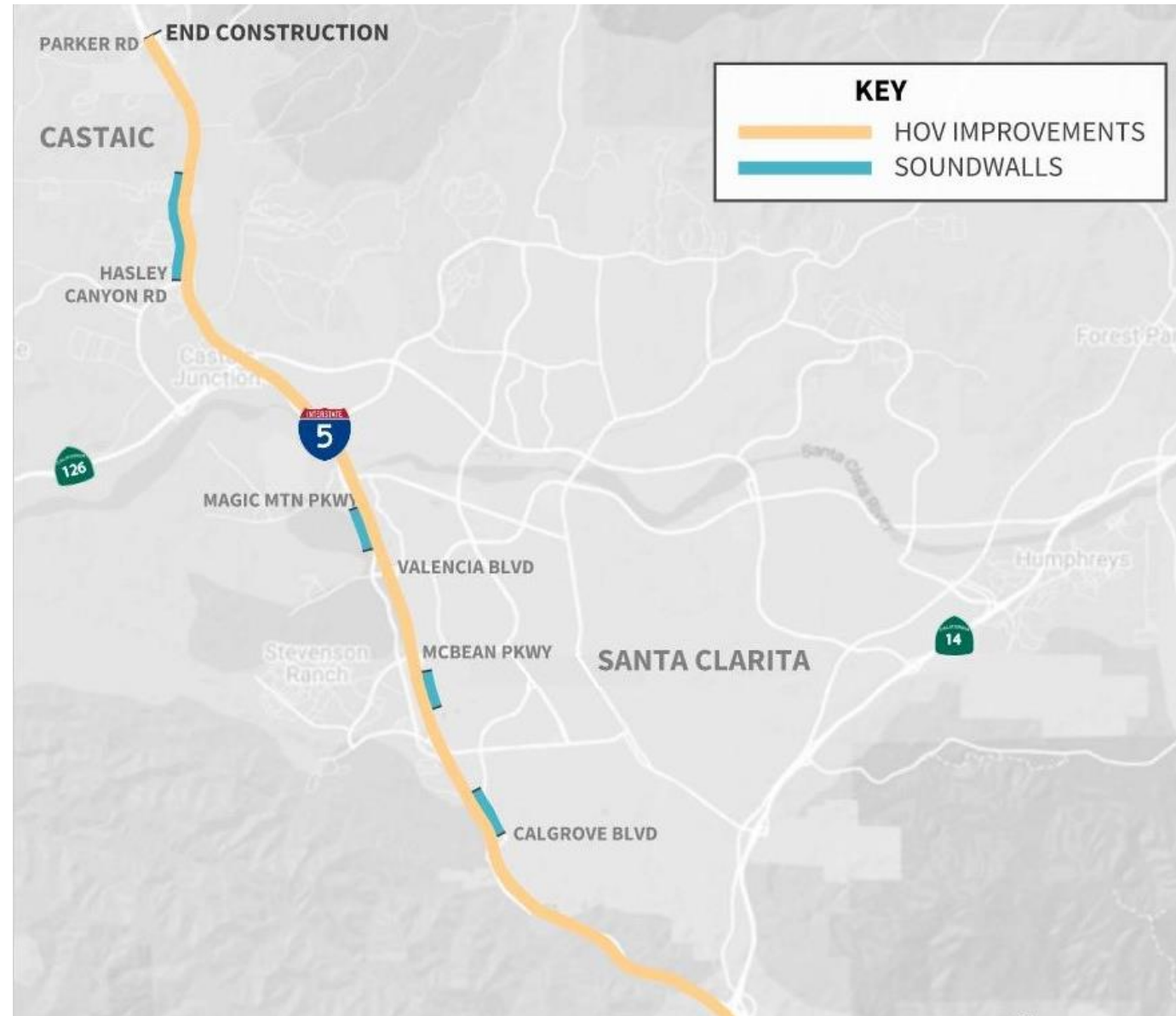
Sound Walls Segments

I-5 Southbound

- North of Hasley Canyon Rd
- Magic Mountain Pkwy to Valencia Bl

I-5 Northbound

- South of McBean Pkwy
- North of Calgrove Bl



UPCOMING CONSTRUCTION

Construction Update: Overview

Bridges	Walls	Shoulders and Ramp
<p>Ongoing thru 2026</p> <ul style="list-style-type: none">• Weldon Canyon Rd OC• Gavin Canyon UC• Rye Canyon Rd• Magic Mountain Pkwy	<p>Ongoing thru 2026</p> <ul style="list-style-type: none">• Northbound retaining walls between Magic Mountain Pkwy and Biscailuz Dr• Northbound Truck Route• Southbound retaining walls at Weldon Canyon Rd Overcrossing• Sound walls between Magic Mountain Pkwy to Calgrove Bl	<p>Ongoing thru 2026</p> <ul style="list-style-type: none">• Drainage, barrier, signage, and pavement work project-wide• Outside lane reconstruction• Temporary pavement and new construction of northbound truck route on-ramp• Lighting, fiber, ramp metering, fencing, and metal barrier installation.



I-5 Bridge Construction Activity for Future HOV Lanes

Gavin Canyon Undercrossing Bridge: Calgrove Bl to Weldon Canyon Rd

Active/Upcoming Construction Activities

- Concrete barrier work and joint seal replacement
- Worksite traffic control and intermittent closures of The Old Rd are ongoing through Summer 2026
 - **Work hours:** Monday - Friday, from 9pm to 5am, and Saturdays as needed from 9pm to 7am
 - **Closure Limit:** The Old Rd between Calgrove Bl and Weldon Canyon Rd



Gavin Canyon Bridge Segment – March 2026

I-5 Bridge Construction Activity for Future HOV Lanes

Magic Mountain Pkwy Closures and Detours

Active/Upcoming Construction Activities

- Bridge extension completed in February 2026
- Current activities include crash sidewalk construction and restriping.
- Nightly intermittent closures of Magic Mountain Pkwy, between The Old Rd and Tourney Rd through Fall 2026
 - **Work hours:** Weeknights and Saturdays as needed, 7pm to 6am
 - **Closure Limit:** Magic Mountain Pkwy, between The Old Rd and Tourney Rd



Magic Mountain Pkwy Bridge Segment – March 2026

I-5 Bridge Construction Activity for Future HOV Lanes

Rye Canyon Rd Bridge

Active/Upcoming Construction Activities

- Draining work, slope paving, abutments, sidewalk construction and restriping
- Intermittent closures of Rye Canyon Rd are ongoing through Summer 2026
 - **Work hours:** Monday – Friday, and Saturdays as needed from 7pm to 7am
 - **Closure Limit:** Eastbound and westbound Rye Canyon Rd, between Ave Stanford and The Old Rd

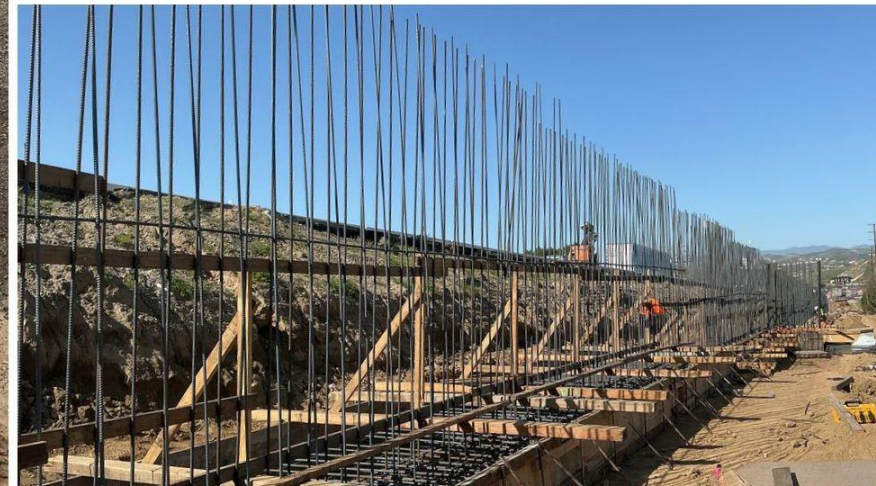


Rye Canyon Rd Bridge Segment – March 2026

Outside Shoulder Retaining Walls: Ongoing Magic Mountain Pkwy and Biscailuz Dr

Active/Upcoming Construction Activities

- All concrete work for retaining walls are complete
- Minor activities remaining for two retaining wall on the southbound I-5



Northbound Retaining Wall Construction Activities – February 2026

Sound Wall Construction: Ongoing

Northbound and Southbound I-5

Castaic Soundwall – Between Hasley Cyn Rd and Villa Cyn Rd

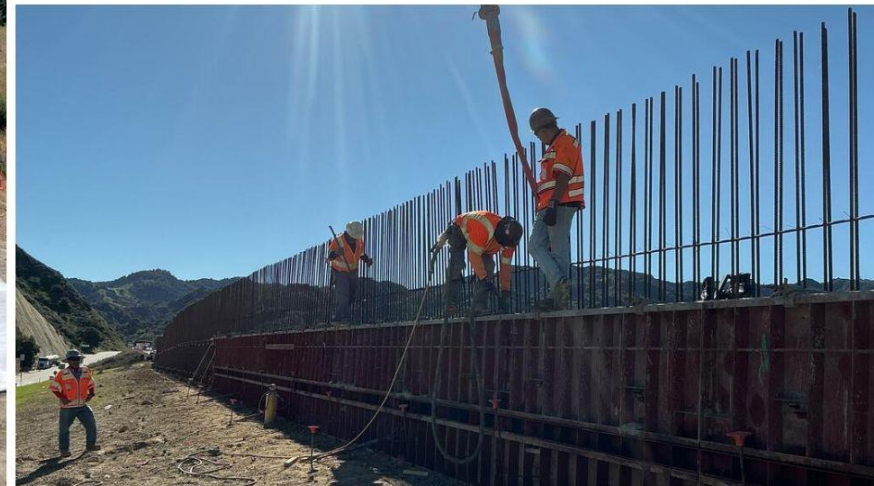
- Roadway and paving work, anticipated to continue through July 2026

Valencia Soundwall – Between Valencia Bl and Magic Mtn Pkwy

- Installation of transparent panels, anticipated to be completed by end of Summer 2026

Calgrove Soundwall – Between Calgrove Bl and Lyons Av

- Scaffolding, block wall installations, and paving, anticipated to be completed by end of Summer 2026



Castaic, Valencia Bl, and Calgrove Bl Sound Wall Segments – January - March 2026

I-5 Ongoing Activities

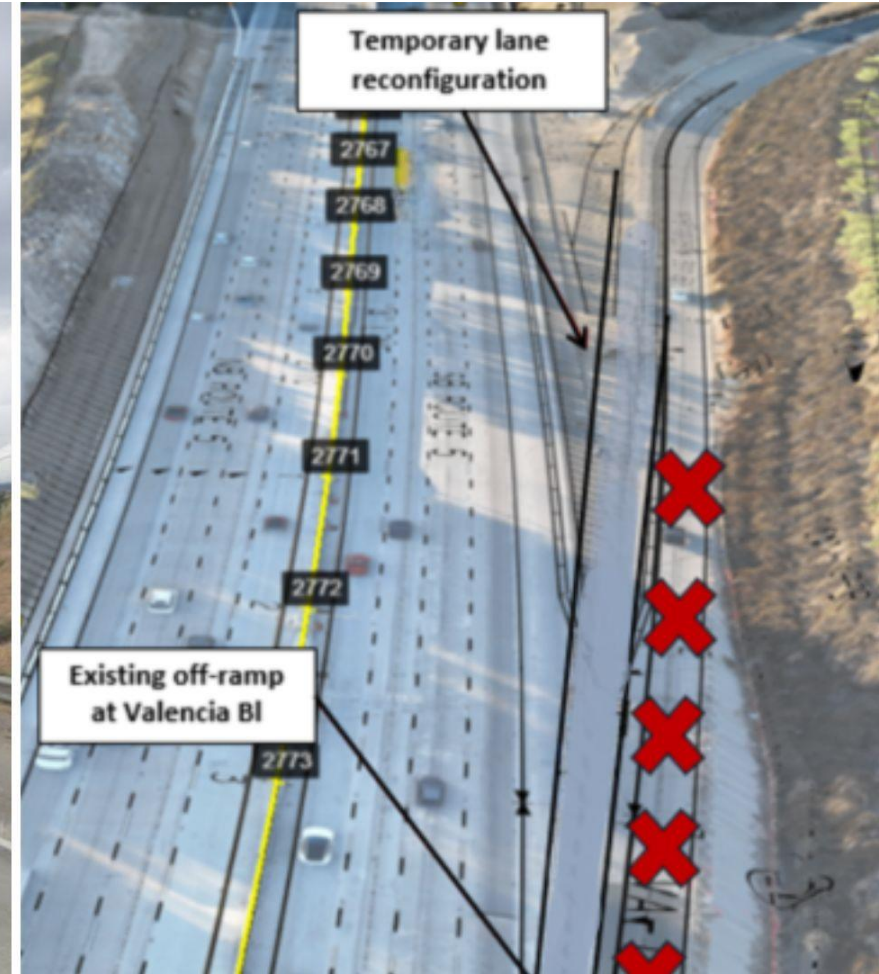
Stage 2 Construction

Southbound Valencia BI Off-ramp Traffic Shift

Removal of existing striping, placement of new striping, and adjustments of concrete barriers.

Work hours

- Long-term lane reconfiguration through October 2026
- Nightly intermittent ramp closures from 7:00pm and 6:00am



Google Maps image of southbound Valencia BI on-ramp and Lane Reconfiguration Graphic

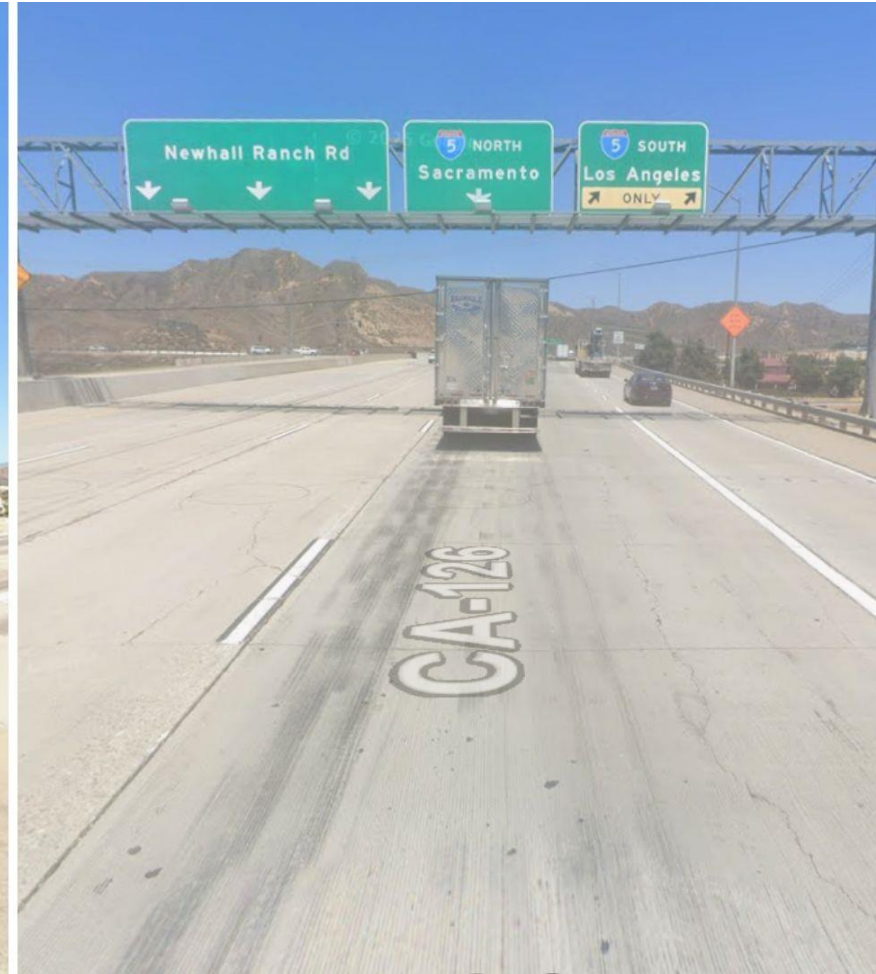
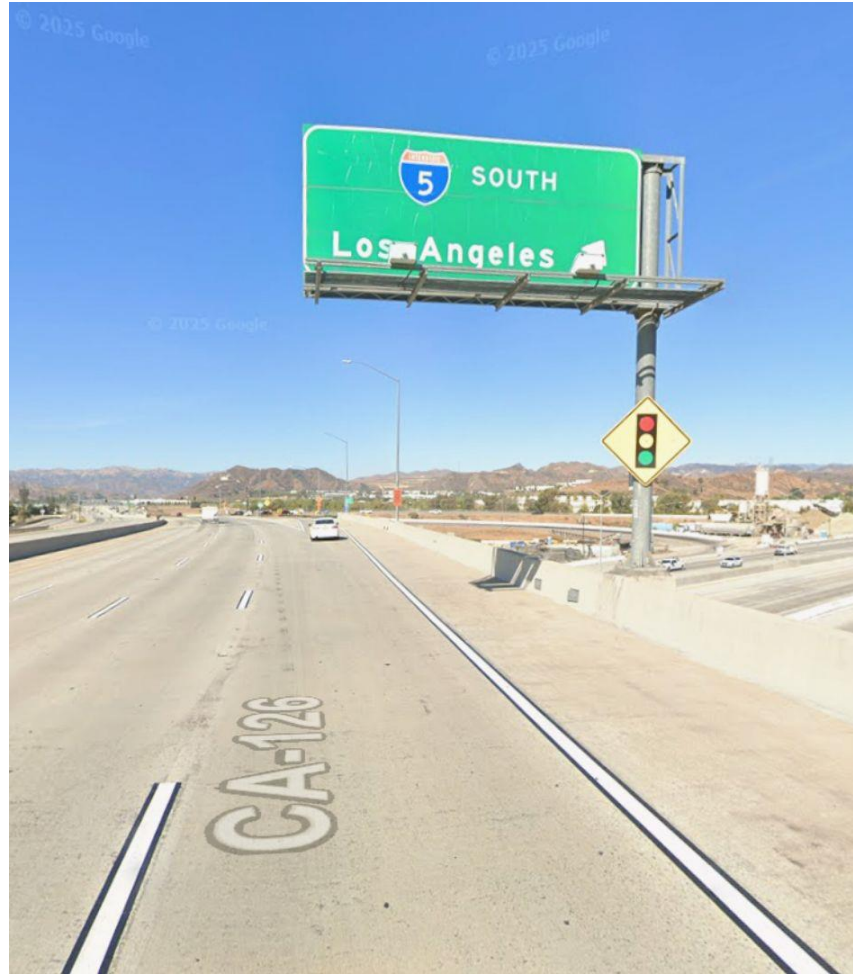
I-5 Upcoming Activities

Stage 2 Construction

Upcoming Traffic Shifts

Removal of existing striping, placement of new striping, and adjustments of concrete barriers.

- Southbound SR-126 On-ramp (eastbound), June 2026
- Southbound Rye Canyon Rd Off-ramp, June 2026
- Northbound Truck Scales, June 2026
- Southbound Hasley Canyon Rd Off-ramp, August 2026



Google Maps image of southbound SR-126 on-ramps

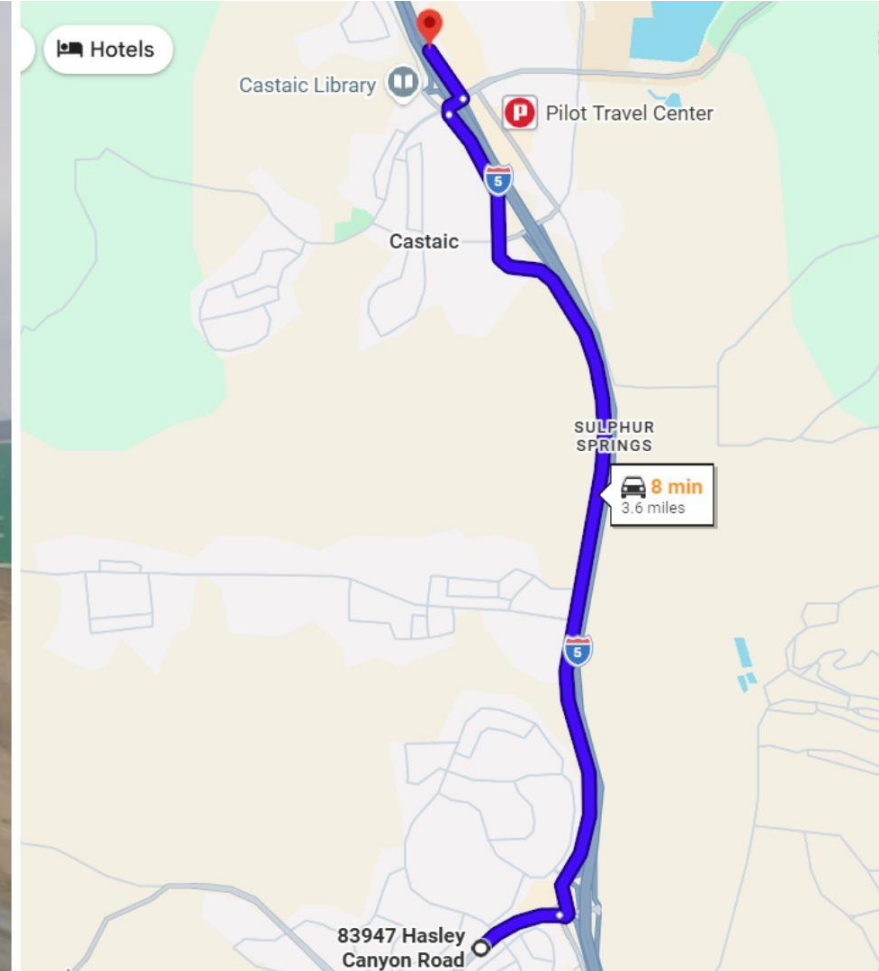
I-5 Ongoing Activities

Stage 2 Construction

Northbound Hasley Canyon Rd On-ramp Long-Term Full Closure

Roadway excavation and construction, concrete and asphalt paving, electrical work, and metal beam guardrail installation.

- **Work hours:** Continuous, 24 hours per day, ramp closure began April 20, 2026
- **Closure Limit:** Northbound Hasley Canyon Rd on-ramp
- **Detour:** Traveling northbound on The Old Rd, onto eastbound Lake Hughes Rd to the northbound Lake Hughes on-ramp



Google Maps image of northbound Hasley Canyon Rd on-ramp and Detour Map

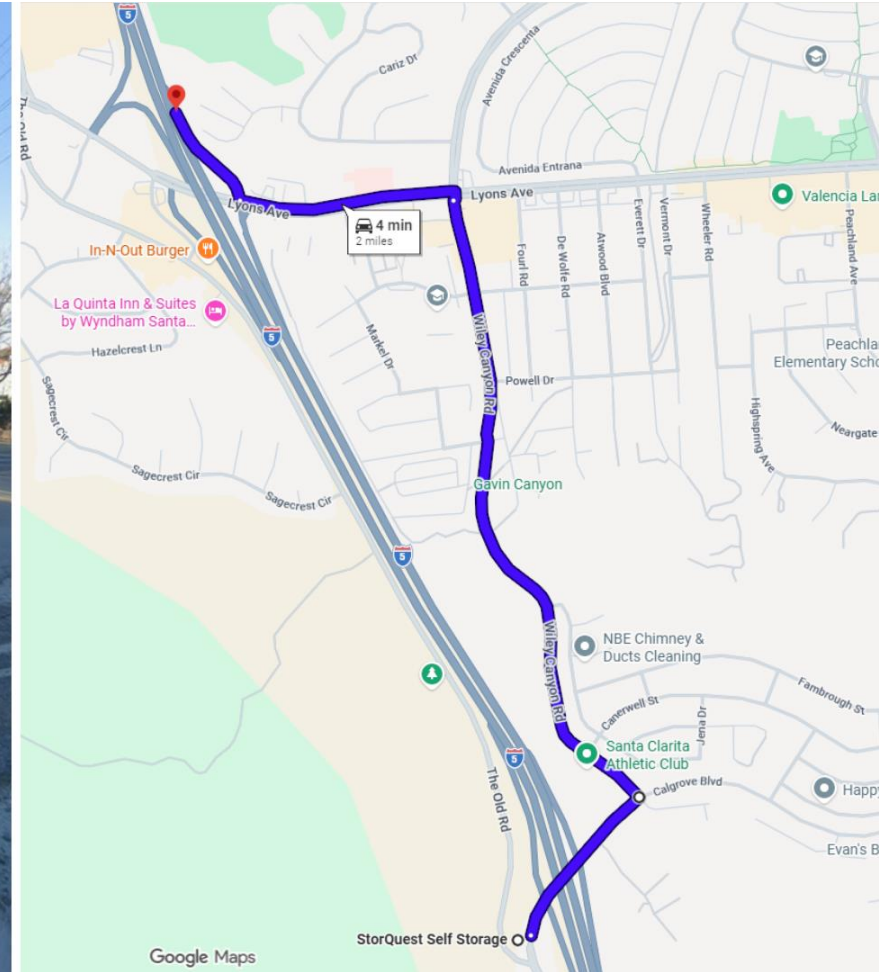
I-5 Upcoming Activities

Stage 2 Construction

Northbound Calgrove Bl On-ramp Long-Term Full Closure

Roadway excavation and construction, concrete and asphalt paving, electrical work, and metal beam guardrail installation.

- **Work hours:** Continuous, 24 hours per day, ramp closure anticipated to begin July 2026
- **Closure Limit:** Northbound Calgrove Bl on-ramp
- **Detour:** Traveling on Calgrove Bl, head north on Wiley Canyon Rd, and west on Lyons Av/Pico Canyon Rd to the northbound I-5.



Google Maps image of northbound Calgrove Bl on-ramp and Detour Map

I-5 Upcoming Activities

Stage 2 Construction

Southbound Hasley Cyn Rd/Sedona Way On-ramp Long-Term Full Closure

Roadway excavation and construction, concrete and asphalt paving, electrical work, and metal beam guardrail installation.

- **Work hours:** Continuous, 24 hours per day, ramp closure anticipated to begin August 2026
- **Closure Limit:** Southbound Hasley Cyn Rd/Sedona Way on-ramp
- **Detour:** Traveling northbound on The Old Rd, enter the northbound Hasley Canyon Rd hook on-ramp.



Google Maps image of southbound Hasley Canyon Rd/Sedona Way on-ramp

I-5 Upcoming Activities

Full Freeway Closures

Permanent Signage Installations

- **Work hours:** Full 1-2 night closure of northbound and southbound I-5, anticipated September 2026 through February 2027
- **Closure Limit:** Full closure of northbound and southbound I-5

Joint Seal Replacement at Gavin Canyon Undercrossing Bridge

- **Work hours:** Full 2-3 night closure of northbound and southbound I-5, anticipated September 2026
- **Closure Limit:** Full closure of northbound and southbound I-5 from Weldon Canyon Rd to Calgrove Bl



Ongoing Project-Wide Permanent Signage Installation

Wayfinding Signage: Third-Party Coordination

- Changeable Message Signs (CMS), and detour wayfinding signage as per Caltrans standard requirements
- Coordination with Google Maps and Waze for navigation apps to show the closures
- Coordination with emergency responders to understand closures and provide on-site traffic management



Examples of Portable Change Message Signs (PCMS) placed for public awareness

Noise: Monitoring and Mitigation

Noise Mitigation

- Noise control plan, administered by a qualified acoustical engineer
- Noise monitoring, reporting, and mitigation required if noise exceeds Metro/Caltrans criteria
- Sensitive noise receptors will be used to monitor permitted levels



Weldon Canyon Rd Bridge Demolition, November 2023

Dust: Monitoring and Mitigation

Dust Mitigation and Stormwater Management

- Fugitive dust and stormwater management plans, administered by environmental engineers
- Typical mitigations include water trucks for dust, slope erosion control, track out control, reduced vehicle speeds, covering inactive stockpiles, and storm drain protections

Coordinated response to complaints



Examples of typical erosion control and dust mitigation methods used on the project

Upcoming Holiday Schedule: No Lane Closures

Memorial Day

Friday May 22nd – Tuesday May 26th

Independence Day

Thursday July 2nd – Monday July 6th

Holiday Closure Restrictions

- New Year's Day
- Presidents' Day
- **Memorial Day**
- **Independence Day**
- Labor Day
- Columbus Day
- Halloween
- Veteran's Day
- Thanksgiving
- Christmas Day

May 2026

Sun	Mon	Tue	Wed	Thu	Fri	Sat
26	27	28	29	30	1	2
3	4	5	6	7	8	9
10	11	12	13	14	15	16
17	18	19	20	21	22	23
24	25	26	27	28	29	30
31	1	2	3	4	5	6

June 2026

Sun	Mon	Tue	Wed	Thu	Fri	Sat
31	1	2	3	4	5	6
7	8	9	10	11	12	13
14	15	16	17	18	19	20
21	22	23	24	25	26	27
28	29	30	1	2	3	4

July 2026

Sun	Mon	Tue	Wed	Thu	Fri	Sat
28	29	30	1	2	3	4
5	6	7	8	9	10	11
12	13	14	15	16	17	18
19	20	21	22	23	24	25
26	27	28	29	30	31	1

55 MPH Speed Limit: Corridor Wide

Work Zone Driving Tips

- Stay alert
- Merge early
- Avoid distractions
- Don't speed

Fines are doubled in freeway work zones.



Work zone speed limit signage



I-5 NCEP Community Meeting

Save the Date

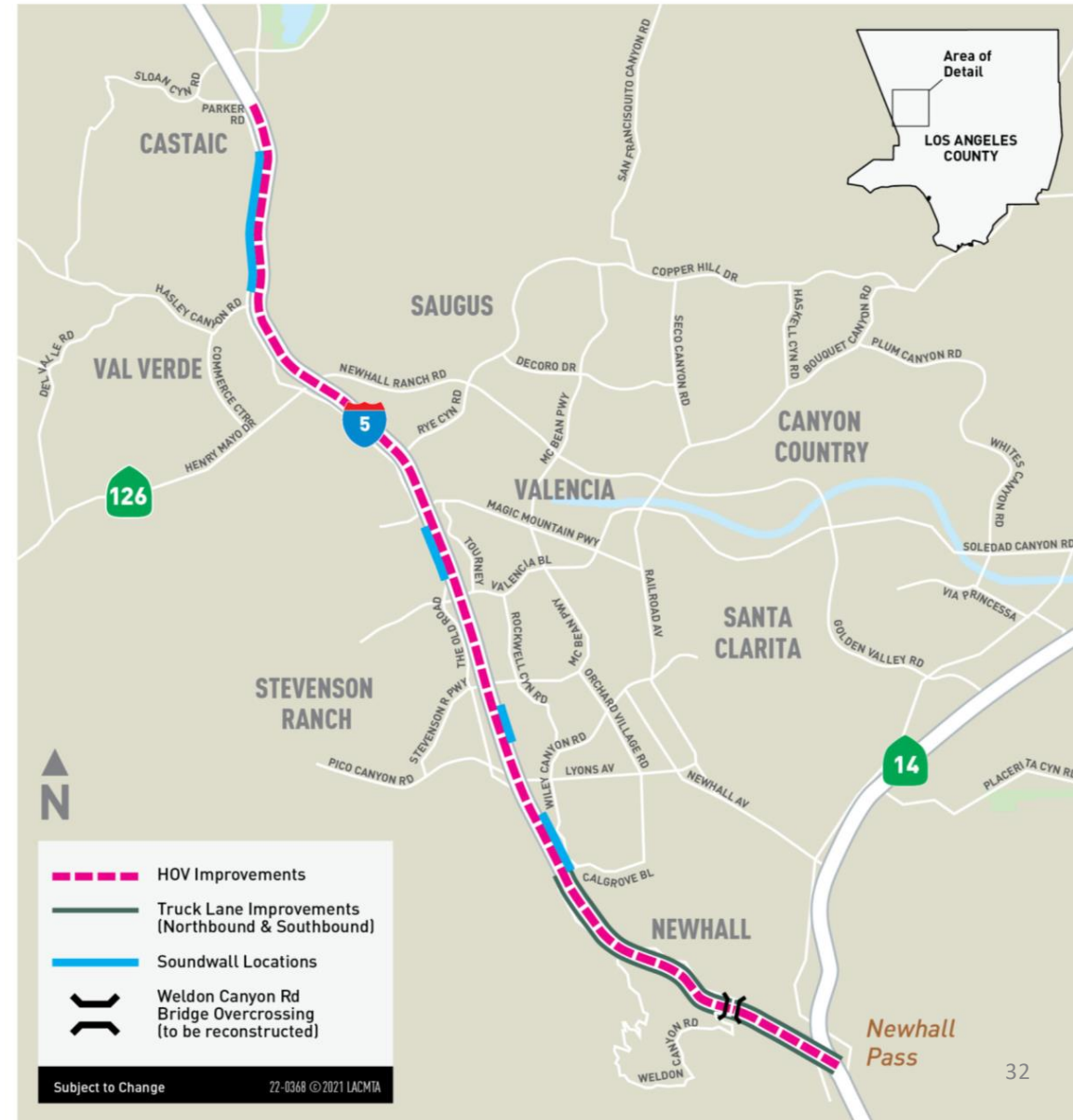
I-5 North County Enhancements Project Construction Update Community Meeting

Wednesday, August 26, 2026, 6:00pm

Zoom Link: us02web.zoom.us/j/81700494519

Webinar ID: 997 1477 7647

Call-in: (213) 338-8477



I-5 North County Enhancements Project Contacts



Saroya Sandiford

Community Relations Manager

sandifords@metro.net



Chloe Lee

Principal Community Relations Officer

leec5@metro.net

Project Hotline



213.922.2772



l5enhancements@metro.net



Metro.net/projects/i-5-
enhancements



[https://www.facebook.com/
groups/metronorthla](https://www.facebook.com/groups/metronorthla)



Thank You For Joining Us!

Your feedback helps us improve how we share project updates with the community!

Please take a moment to scan the QR code or visit the link below to let us know how you learned about tonight's meeting.

<https://arcg.is/1CLW8q3>

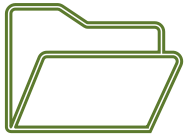
Your response helps us better reach the Santa Clarita community. Thank you for helping us stay connected.



Using Zoom & Submitting Questions



Submit your questions by using the Q&A feature



This meeting is being recorded. Video file will be posted on our website at metro.net/i-5-enhancements.



213.922.2772



I5enhancements@metro.net



metro.net/projects/i-5-enhancements/