



We're planning a better commute
on the 105.



I-105 EXPRESSLANES PROJECT



Interpretation Introduction

- For those seeking Spanish translation:



Click the interpretation icon to choose your language

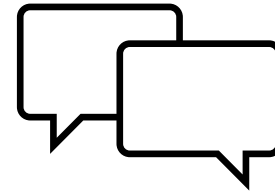
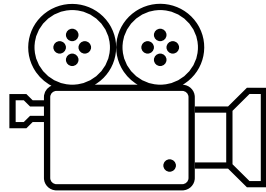
- Select your preferred language (Spanish translation)
- To hear the interpreted language only, click **Mute Original Audio** (Optional).

- Interpretación en español

- Haga click en el icono de "Interpretation"
- Eliga el idioma que le gustaria escuchar (español)

Housekeeping

- Today's meeting is being recorded
- Attendee cameras are off and microphones are muted. Caption services are available via Zoom
- During the meeting, please use the Q&A icon to submit any questions or comments for our team. There will be a dedicated time for Q & A t the end of the meeting.



Code of Conduct

- Metro is committed to ensuring that all participants can fairly and clearly share ideas, comments and concerns about this project. To provide a safe and equitable process, we are asking for your help.
- **During this meeting, please**
 - Respect the format of the meeting and allow everyone an opportunity to comment
 - Treat fellow community members, agency representatives, Metro staff, and others with respect
 - Address all comments to Metro staff and consultants – not to other attendees



Know Your Rights



AS AN IMMIGRANT, YOU HAVE RIGHTS!

Get support, legal services and protections.

COMO INMIGRANTE, ¡USTED TIENE DERECHOS!

Obtenga apoyo, servicios legales y protecciones.

320 W. Temple St.
Room G10
Los Angeles, CA
90012

800-593-8222

oia.lacounty.gov



- All immigrants, regardless of status, are entitled to basic rights and protections under the law. Understanding these rights is the first step toward safety, empowerment, and accessing essential resources.
- Key Support Services Available:
 - Free or low-cost legal services
 - Language-accessible assistance
 - Resources for navigating immigration issues
 - Protection from fraud, discrimination, and abuse
- oia.lacounty.gov



The Metro D Line Subway Extension Opening!

- > Opening Date: May 8, 2026
- > Stations at
 - Wilshire/La Brea
 - Wilshire/Fairfax
 - Wilshire/La Cienega



This is the Wilshire/La Cienega Station

Meeting Agenda

- > Project Overview
- > Metro ExpressLanes Operations
- > Construction Update
 - Segment 1
 - Segments 2 & 3
- > Community Outreach and Engagement
- > Questions and Answers

Concrete paving machine



Roadway pavement construction

Project Overview

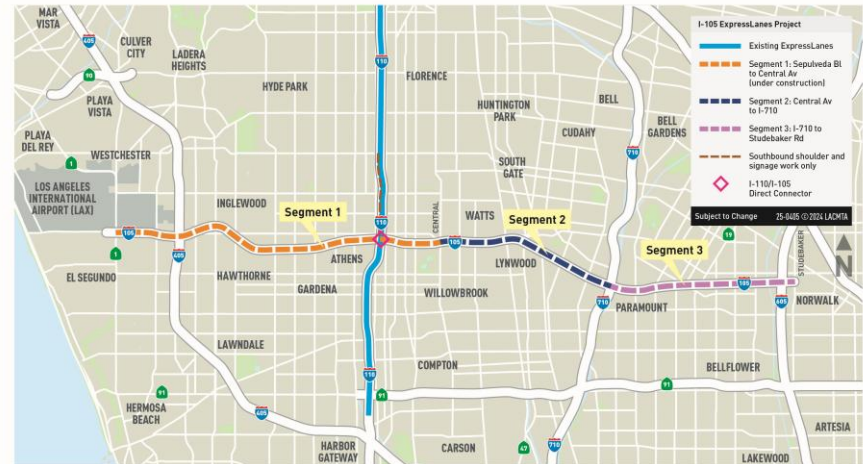


Project Overview

- > Construction converting the existing, I-105 HOV lane to two ExpressLanes in each direction between I-405 and Studebaker Rd
- > Provides more options, access, and connections for all users of the I-105 corridor
- > Segment 1 - currently under construction
- > Segments 2 and 3 - construction anticipated to start mid-2026
- > **No residential Right-of-Way impacts**
- > Is among the projects and improvements of Measure M that was supported and approved by LA County voters including voters in the project area



I-105 ExpressLanes Project Area



Project Overview: Benefits

- > **Addresses speed degradation** in the existing HOV lane that is operating at less than 45 mph during peak periods.
- > **Enhances operations and improves trip reliability and travel times** within the corridor for all motorists including HOVs, vanpools, commuters and transit service to LAX.
- > **Enhances highway safety** by addressing an auxiliary lane gap closure and by reducing stop and go traffic conditions, which will in turn reduce rear-end collisions.
- > **Addresses freeway overflow and congestion on local streets** by shifting vehicles in local area streets back onto the freeway, **improving livability for corridor residents.**

I-105 Current and Forecast Performance

- Existing traffic data:
 - WB AM Peak GP lane end to end average travel time 36 minutes, average speed 26 MPH
 - WB AM Peak HOV lane end to end average travel time 30 minutes, average speed 32 MPH
 - EB PM Peak GP lane end to end average travel time 65 minutes, average speed 15 MPH
 - EB PM Peak HOV lane end to end average travel time 51 minutes, average speed 19 MPH
 - WB AM Peak period is between 6-9AM, EB PM Peak period 1-7PM
- **HOV lanes are classified as degraded per Federal standards**, defined as operating at below 45 miles per hour
- Project is expected to reduce general purpose travel times up to 10%, ExpressLanes speeds expected to be above 45 MPH



Safety Benefits

The I-105 ExpressLanes Project will provide the following safety benefits:

- > New auxiliary lanes between I-710 and Long Beach Bl to improve lane merging
- > Improve traffic flow that will:
 - Reduce stop and go traffic
 - Reduce rear-end collisions
- > Updated lane striping for enhanced visibility during nighttime driving.
- > Channelizers for the buffer zones between ExpressLanes and general purpose lanes reduces illegal traffic merge movements



LOCAL NEWS

Long Beach, South Bay area commute slowed by heavy traffic, accident on 105 Freeway

By GREG YEE | greg.yee@presstelegram.com
UPDATED: September 1, 2017 at 3:56 AM PST



Long Beach area freeways are clogged and congested this morning.

710 Freeway: Northbound lanes are clear until the 105 Freeway where traffic into the 30s all the way to the I-5. Southbound lanes are mostly clear coming south of the I-5 and into Long Beach.

405 Freeway: Northbound lanes are showing typical slowing with traffic at a crawl from Orange County all the way through the South Bay. Southbound lanes are clear through the South Bay and Long Beach, but slow down into the teens at the Orange County line.

The whole team caring
for the whole you



LEARN MORE

Regal Medical Group ADOC Medical Group

The whole team caring
for the whole you



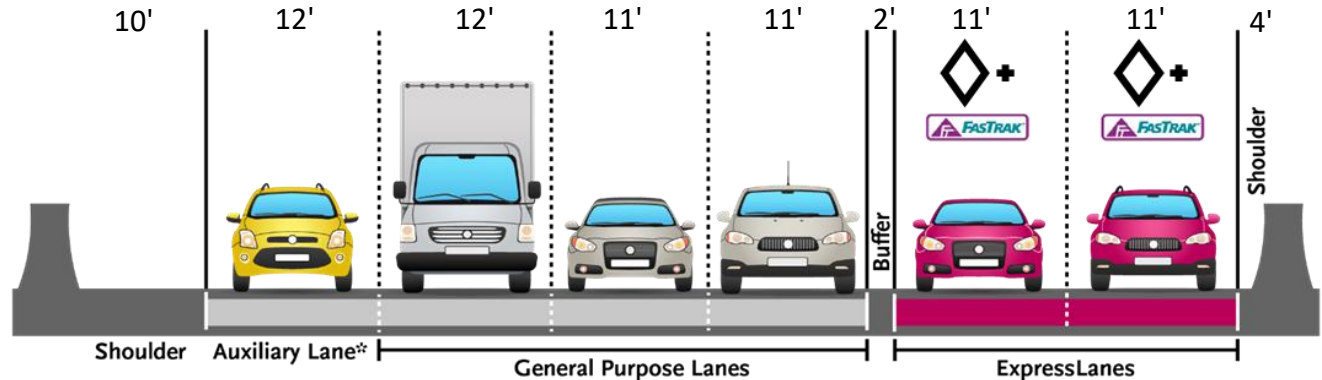
Additional Project Improvements

- > New soundwalls (most with increased height)
- > Seismic retrofit of the Alameda Viaduct
- > Multimodal Improvements:
 - The project will **provide funding for improvements at Harbor and Avalon C line stations**, such as lighting, wayfinding, and repair/rehabilitation projects
 - **Future net toll revenue will be used to fund active transportation, transit, and roadway projects** in the local community along the project alignment

I-105 Freeway New Lane Configuration and Dimensions

The project will utilize non-standard lane and shoulder widths:

- 11 ft. ExpressLanes
- two 11 ft. GP lanes, one 12 ft. GP lane
- 4 ft. left shoulder
- 2 ft buffer between ExpressLanes and GP lanes



New lane dimensions in feet



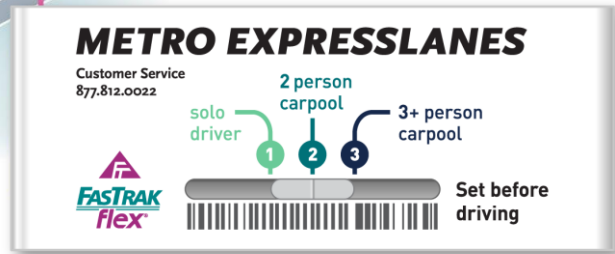
Metro ExpressLanes



How ExpressLanes Work



- Metro ExpressLanes program features:
- ✓ Transit Benefits/Rewards
 - ✓ Low Income Assistance Plan
 - ✓ Choices for Solo Drivers
 - ✓ ExpressLanes revenue reinvestment
 - ✓ For more information, please go to Metroexpresslanes.net



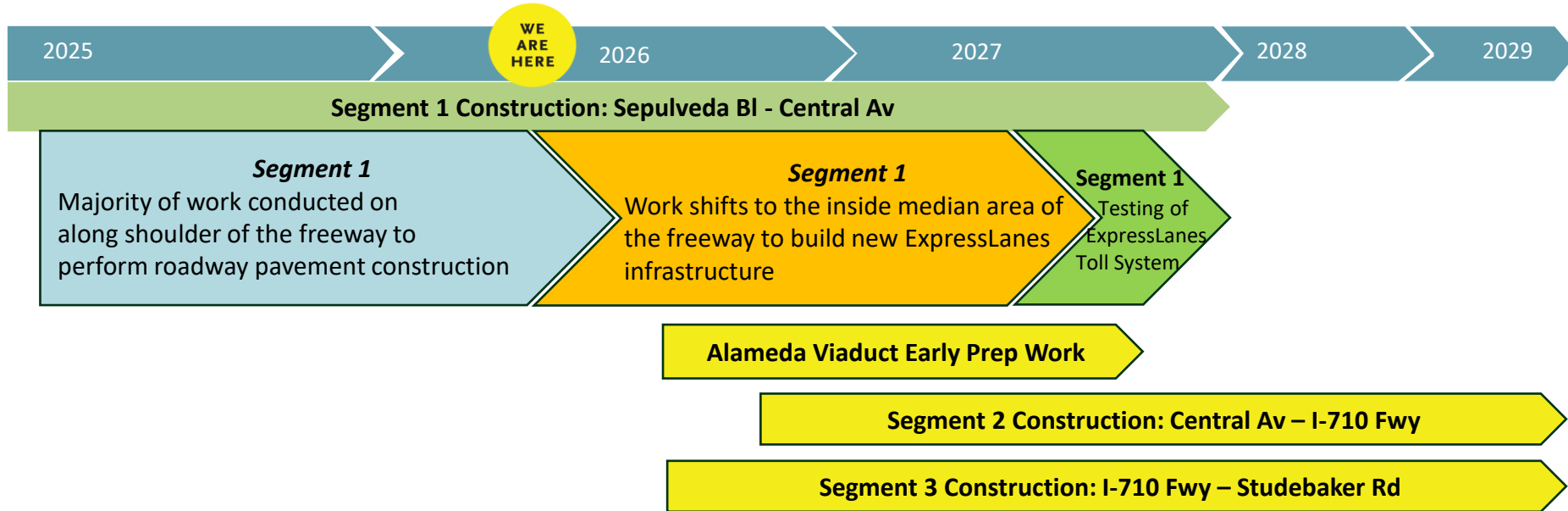
- ExpressLanes users enter/exit at designated locations
- Qualified carpools travel toll-free (with a transponder); switchable transponder must be used to receive carpool discount
- Vehicles can use the ExpressLanes without a transponder but pay \$9+toll



Construction Update



I-105 ExpressLanes Project – Anticipated Construction Schedule



Segment 1 Construction Work Activities

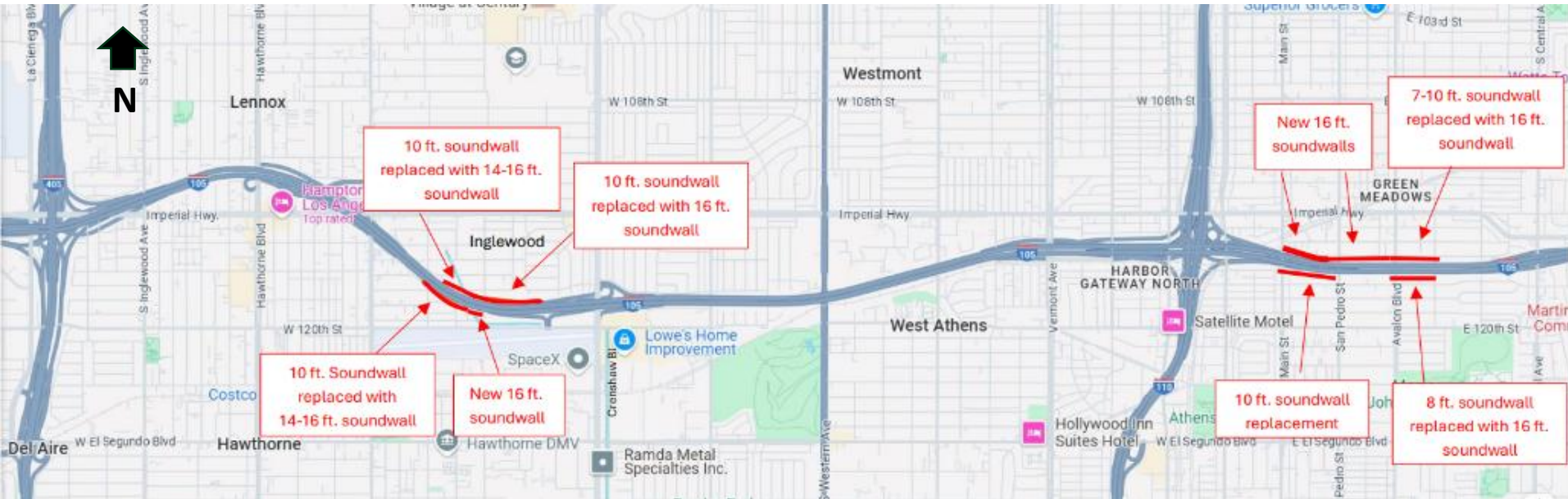
- > Roadway pavement construction along the shoulder and outer edges of freeway corridor
- > New and reconstructed soundwalls (most with increased height)
- > New retaining wall construction
- > Undercrossing/bridge widenings
- > ExpressLanes toll infrastructure, equipment, electrical systems, signage, & pavement markings
- > Landscape and tree removal and restoration



Soil compaction for retaining wall construction

Segment 1 Soundwall Construction Locations

Segment 1 Sound Wall Construction



Segment 1 Roadway Pavement/Soundwall Construction City of Inglewood and Hawthorne

- > Work started early April 2025
- > Mostly day-time work, with some occasional nighttime work
- > Most work conducted behind k-rail (concrete barriers) within Caltrans ROW
- > Construction access from the freeway
- > Soundwall reconstruction anticipated to be completed in summer 2026
- > Roadway pavement construction anticipated through late 2026

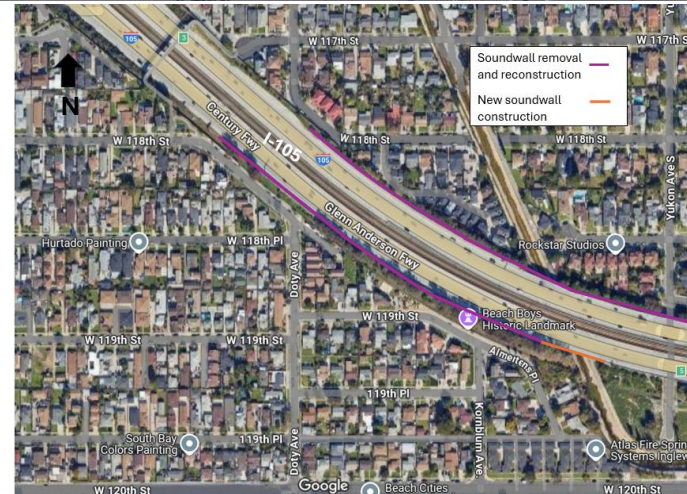
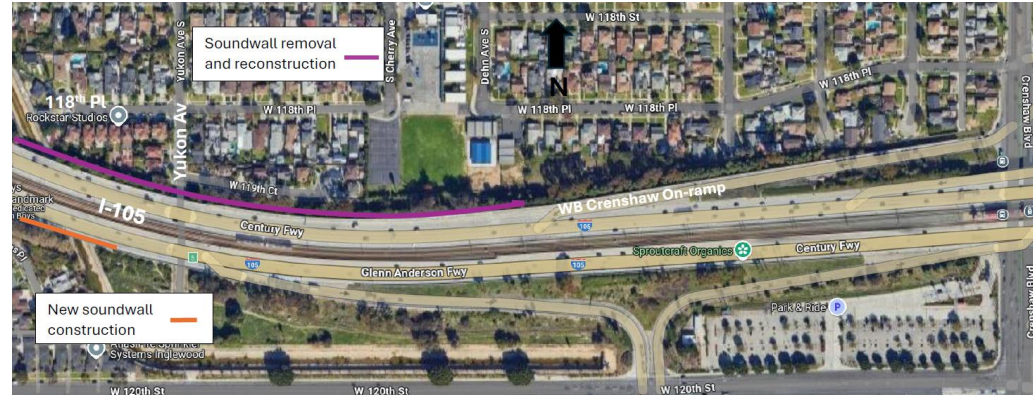


Image is a rough approximation of work zone areas



Roadway Pavement/Soundwall Construction

I-105 EXPRESSLANES IMPROVEMENTS Typical Section of Higher I-105 Elevation (Portions of Segment 1 and Segment 2)

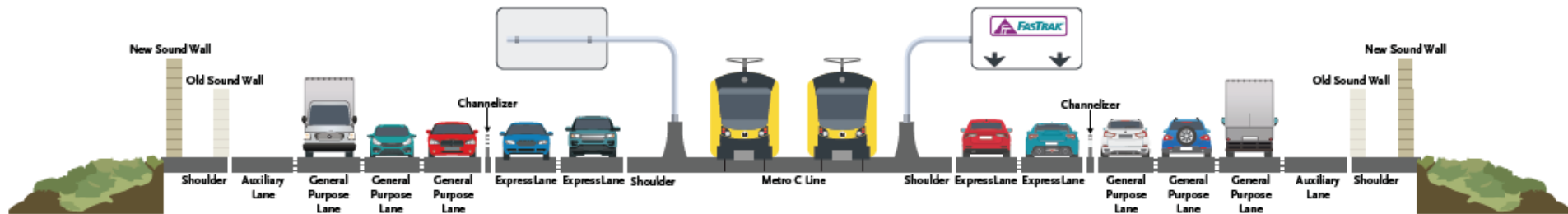


Image is a rough approximation of final roadway configuration



Segment 1 Undercrossing/Bridge Construction

- > Construction began May 2025
- > Anticipated completion late summer of 2026
- > Work activities include:
 - Drilled pile installation
 - Outer overhead barrier demolition
 - Excavation, bridge foundation and structure work
 - Falsework installation (bridge support structure)
 - Bridge deck installation
- > Work mostly conducted during daytime hours
- > Most work conducted behind k-rail (concrete barriers)
- > Occasional night work including city street closures at I-105 undercrossing in the City of LA

City of Los Angeles



City of Hawthorne and Inglewood
(No vehicle or pedestrian access)



Images are a rough approximation of work zone areas

Segment 1 Undercrossing/Bridge Construction



Westbound Avalon BI undercrossing abutment footing



Westbound Avalon BI undercrossing concrete work

Segment 1 Undercrossing/Bridge Construction



Avalon BI undercrossing construction



Segment 1 Roadway Pavement/Retaining Wall Construction

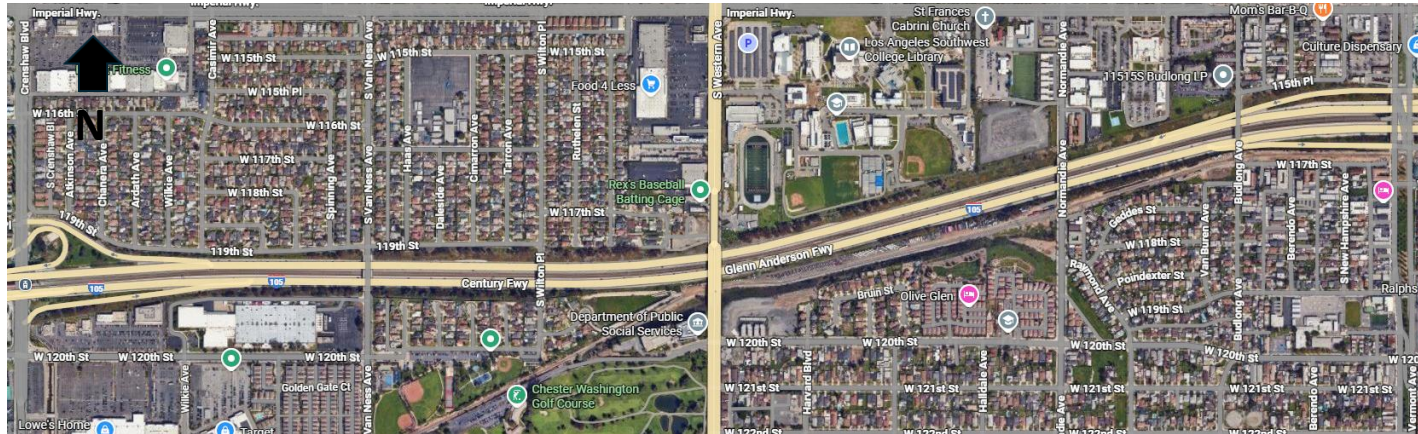
- > Anticipated construction duration from Spring 2025 to mid-2026
- > Construction at various locations along the corridor
- > Work activities include:
 - Retaining wall construction
 - Excavation, drilling, and grading
 - Roadway pavement construction
 - Landscape removal/restoration
- > Mostly daytime work, with some occasional nighttime work
- > Most work conducted behind k-rail (concrete barriers)
- > Construction access from the freeway



Shoring work activities for retaining wall construction

Segment 1 Roadway Pavement/Retaining Wall Construction

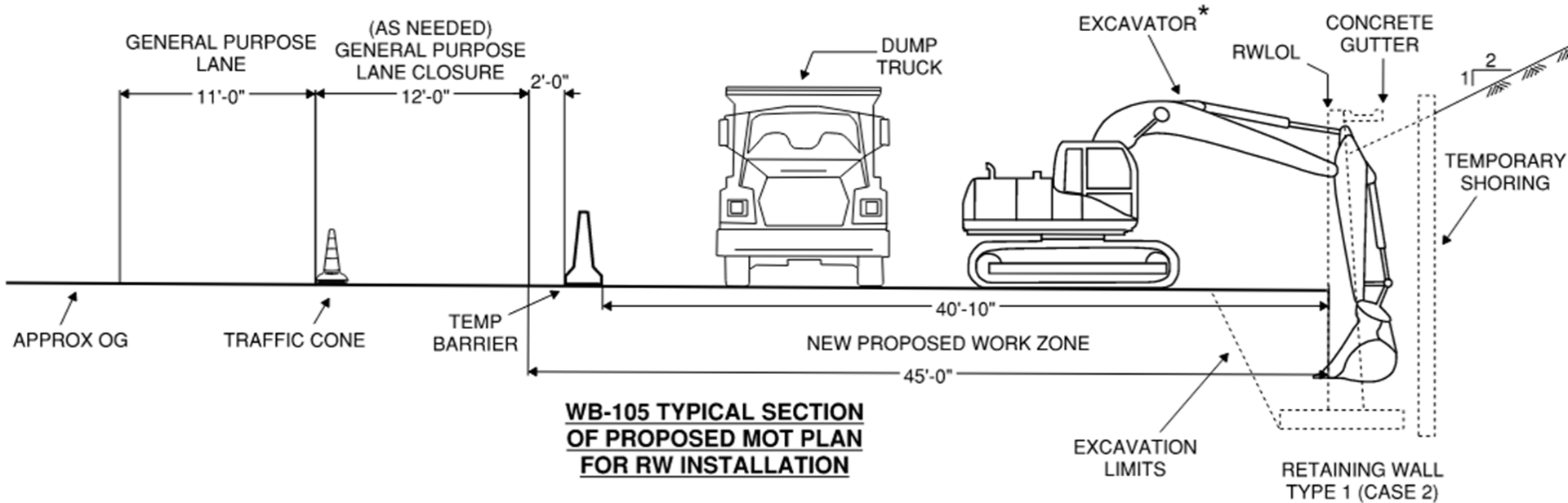
Typical I-105 retaining wall construction area



Retaining wall construction area along EB and WB I-105 between Vermont Av to Crenshaw Bl

Roadway Pavement/Retaining Wall Construction

Typical retaining wall construction method



Roadway Pavement/Retaining Wall Construction

I-105 EXPRESSLANES IMPROVEMENTS Typical Section of Lower I-105 Elevation (Portions of Segment 1 and Segment 3)

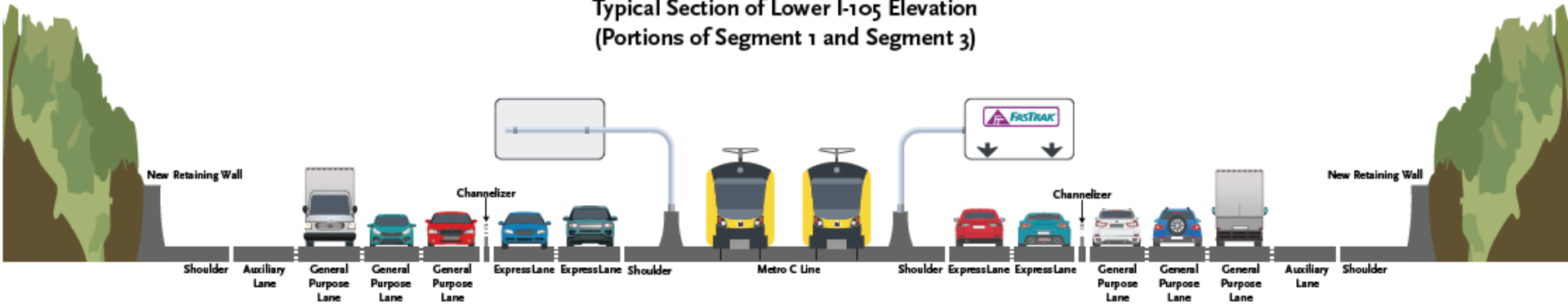


Image is a rough approximation of final roadway configuration



Freeway Traffic Control/Closures (cont.)

Upcoming extended weekend lane closures

- Series of multiple closures
- Directional inside/center 2 lane closures
- Implemented intermittently from spring 2026 to early 2027
 - April 25 – 26 (Metro C Line power relocation work)
 - May 16 – 17 (First median sign structure work)
 - Additional dates after World Cup (Median sign structure work)



Retaining wall construction near Western Av

Segments 2 and 3 Construction Work Activities

- > New roadway pavement construction throughout I-105 corridor
- > Construction of new soundwalls and reconstructed soundwalls (most with increased height) – Segment 2 from Central Av to Atlantic Av
- > Undercrossing/bridge widenings (total of 11) – Segment 2 from Success Av to Atlantic Av
- > New retaining wall construction – Segment 3 from I-710 to Studebaker Rd

Segments 2 and 3 Construction Work Activities (cont.)

- > Minor I-105 preconstruction activities anticipated in Spring 2026
 - Utility verification
 - Freeway field investigatory and surveying activities
 - Preconstruction surveys of local areas and properties

- > Imperial Hwy/Alameda St early prep work in mid 2026
 - Implementation of long-term traffic reconfiguration/lane reductions
 - Utility relocations

- > New auxiliary lanes from I-710 to Long Beach Bl

- > New ExpressLanes merge lanes near I-710

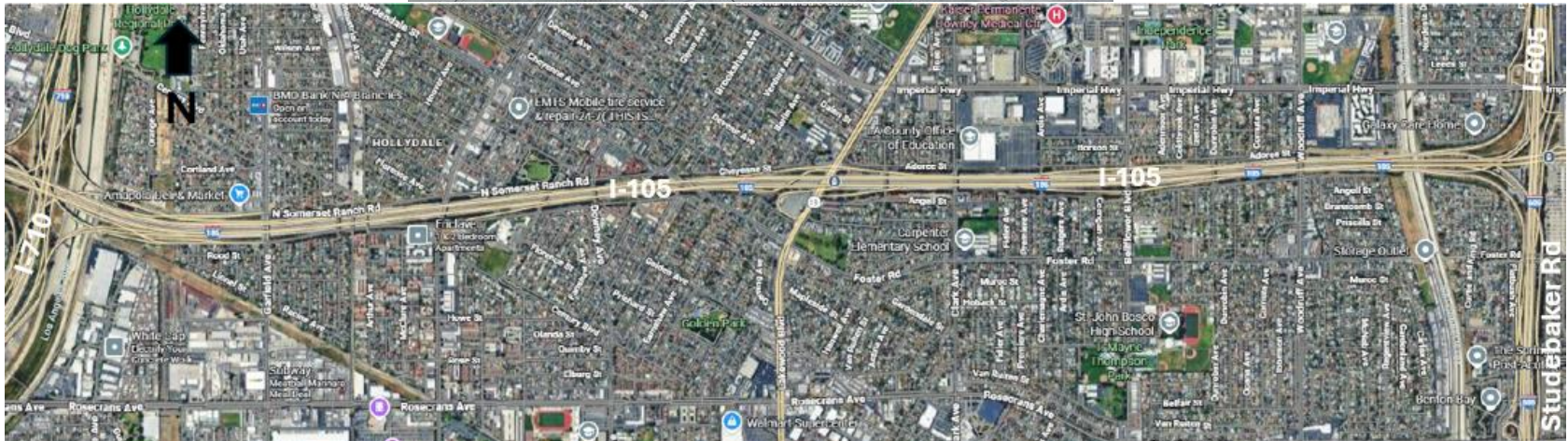


Segment 2 Project Improvements – City of Lynwood



Segment 3 Roadway Pavement/Retaining Wall Construction

Typical I-105 retaining wall construction area

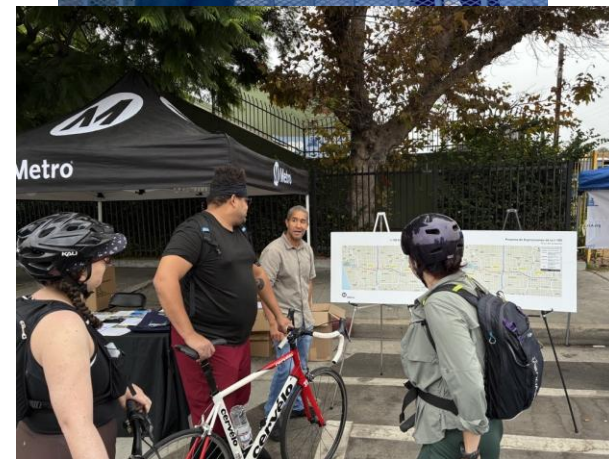


Retaining wall construction area along EB and WB I-105 between I-710 to Studebaker Rd



Community Outreach and Engagement

- Coordination with key stakeholders
- Targeted community group briefings
- Construction Update Community Meetings
- Construction Notices
 - Hard copy distribution
 - Email/Website/Social Media
 - Direct mail or door-to-door distribution
- Community Events
- Coordination with Metro Public Relations
- Media Buys
- Project hotline, email, and website
- Elected Official/City briefings
 - Project updates
 - Stakeholder coordination
 - City Council concurrence
 - Construction mitigation



Stay connected to this project.



213.922.6565



105ExpressLanes@metro.net



Metro.net/105expresslanes

Questions/Comments



Stay connected with Metro Updates



STAY CONNECTED
WITH METRO
UPDATES



SERVICE CHANGES
AND RIDER ALERTS



COMMUNITY
EVENTS AND
MILESTONES



PROJECT UPDATES
ACROSS THE
REGION



RESOURCES THAT
HELP YOU PLAN
AHEAD

> Visit the Website:

- <https://metro.net>

> Get the Emails:

- <https://gometro.la/MetroEmail>

> Friday Email:

- <https://gometro.la/friday>

> The Newsletter

- <https://gometro.la/Newsletter>

THANK YOU