

Welcome!

We will begin in a few moments.

LA River Path Draft EIR Public Hearing

January 21, 2026; January 27, 2026
January 29, 2026 (virtual); January 31, 2026



Metro

Public Hearing Guidelines

We want your feedback and input.

Metro is committed to ensuring that all participants can fairly and clearly share ideas, comments and concerns about this project.

To provide a safe and equitable process, we are asking for your help.

During this public hearing, please:

- Turn off cell phones or set them to vibrate
- Respect the format of the meeting and allow everyone an opportunity to speak
- Do not block the view of other participants
- Address all comments to Metro staff and consultants – not to other attendees
- Maintain a conversational tone
- Treat fellow community members, agency representatives, Metro staff and others with respect, both during and after the hearing



How to Provide Public Comments Today

Verbal Comment

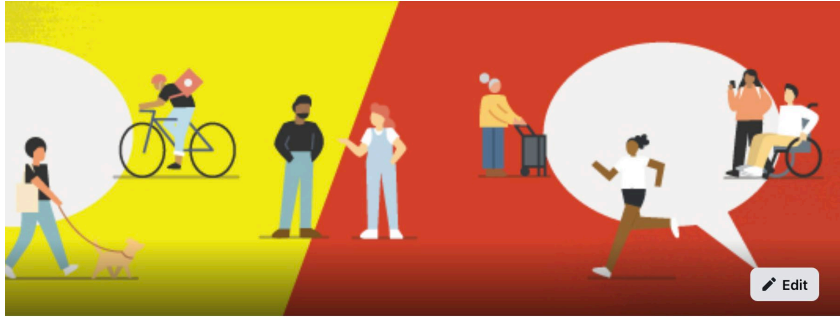
- Verbal comments may be provided at the court reporter stations
- Please fill in a speaker card and have a seat at the chairs
- A staff member will direct you to the next open court reporter
- Verbal public comment is limited to one (1) minutes
- If you have additional comments, you may request another speaker card if time permits or submit written comment

Written Comment

- Comment cards can be filled in and placed in the comment card boxes when complete
- Comments may also be submitted via the online form on the project website or via the project email



Central Los Angeles: Facebook Groups and Email Newsletter



Metro: Central Area Projects

Private group · 80 members

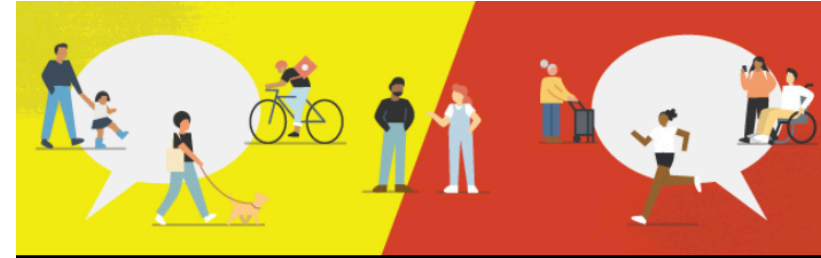


+ Invite

Share

Join the conversation on the Central Area Facebook Group by visiting:

www.facebook.com/groups/metrocentral/



Metro Central Area Projects Updates



Central LA Construction Projects Updates

Metro will host a virtual community meeting to share the latest updates on two major construction efforts: the Division 20 Portal Widening & Turnback Facility and the Link Union Station projects. Attendees will get a first look at updated timelines, visuals of construction progress, and details on what to expect in the coming months. This is a great opportunity to ask questions and speak directly with Metro staff.

When: Tuesday, May 27, 2025 at 12pm

Please click the link below to join the webinar:

<https://us02web.zoom.us/j/91456407320>

Webinar ID: 914 5640 7320

Phone: 213 338 8477



Subscribe to Metro's Central Area Project Updates by scanning the QR code or signing up at:

<https://bit.ly/4dB2my1>

Thank you for joining us!

- **Open House (15 minutes)**
- **Draft EIR Presentation (30 minutes)**
 - Project Overview and Existing Conditions
 - Alternatives and Project Features
 - Draft EIR and CEQA Findings
 - Next Steps
 - How to provide comments
- **Receive formal comments (70 minutes)**

Open House to resume after Oral Comment, if time permits
- **Closing remarks (5 minutes)**



Public Hearing Format



Court Reporter will document public oral comments after presentation



Simultaneous Spanish interpretation available

Know Your Rights

➤ All immigrants, regardless of status, are entitled to basic rights and protections under the law. Understanding these rights is the first step toward safety, empowerment, and accessing essential resources.

➤ Key Support Services Available:

- ✓ Free or low-cost legal services
- ✓ Language-accessible assistance
- ✓ Resources for navigating immigration issues
- ✓ Protection from fraud, discrimination, and abuse

➤ oia.lacounty.gov



**AS AN IMMIGRANT,
YOU HAVE RIGHTS!**

Get support, legal services and protections.

**COMO INMIGRANTE,
¡USTED TIENE DERECHOS!**

Obtenga apoyo, servicios legales y protecciones.

320 W. Temple St.
Room G10
Los Angeles, CA
90012

800-593-8222

oia.lacounty.gov



An illustration showing a diverse group of people using a new bike path. In the foreground, a man in a blue LA Dodgers cap and shirt is riding a bicycle. Behind him, a woman is also on a bike. Further back, a family of four (two adults and two children) is walking. To the right, a woman in a pink dress and sunglasses is walking. The path is orange-brown and runs alongside a blue river. In the background, there is a large white bridge with multiple arches, a tall brown skyscraper, and other city buildings under a blue sky with power lines. The top right corner has a yellow background with a white circle and a series of vertical grey bars.

Next stop: a more connected bike path.

LA RIVER PATH PROJECT



Metro

Today's Presenters



MARK DIERKING

Director,
Community Relations
LA Metro



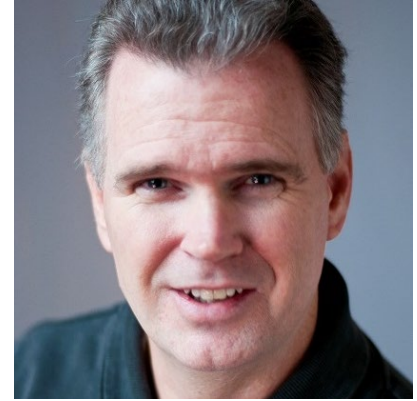
MITALI GUPTA

Metro Project Manager,
Countywide Planning
LA Metro



KHRISTIAN DECASTRO

Metro Deputy Project
Manager
Countywide Planning
LA Metro



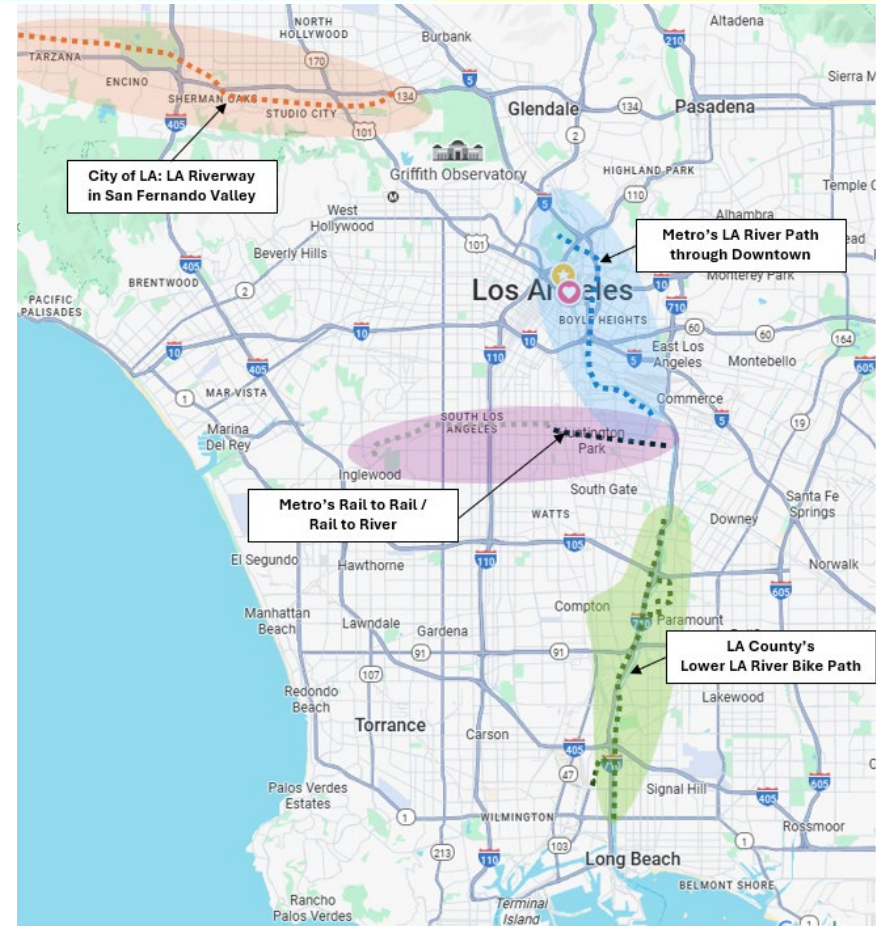
MATTHEW FRANCK

Environmental Lead,
Jacobs Engineering

Project Overview and Existing Conditions

Bike Paths and LA River

- First segment of a bike path was constructed in 1977 (LA River/Rio Hondo Trail – 20+ miles)
- In 2016, Measure M envisioned closing the 8-mile gap of the regional bike network (between Riverside Drive and Atlantic Boulevard)
 - ✓ Measure M allocated \$365M (2015\$) for Design, Environmental Clearance, and Construction
- County of Los Angeles adopted 2022 LA River Master Plan which proposed to have one maintenance agency for the entire river path
- Identification of agency to construct, operate and maintain will need to be determined before project is approved. Metro will not be the operator or maintainer of the project considering the limited Metro property ownership and the lack of jurisdiction over the regional bicycle network.



Project Objectives & Who would be using the LA River Path



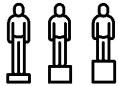
SAFETY



ACCESS



EFFICIENT & SUSTAINABLE



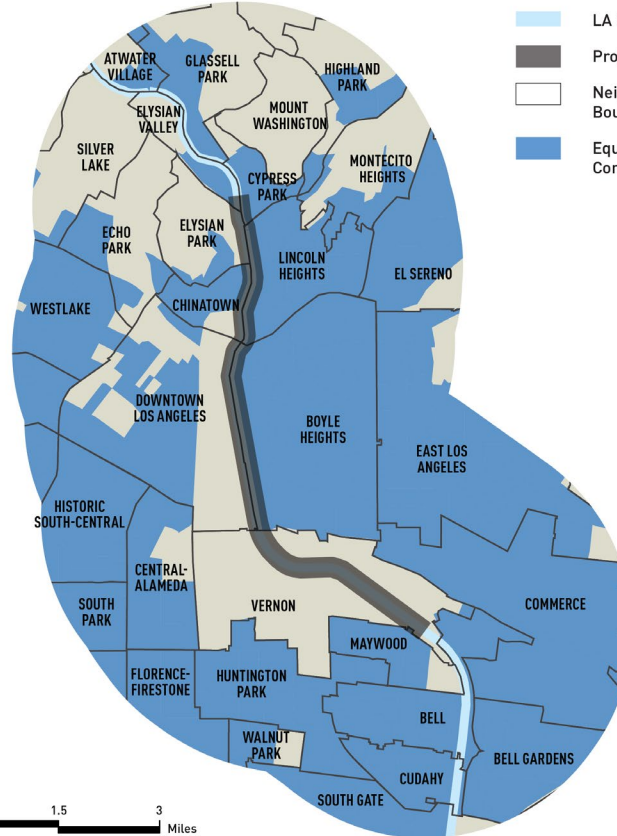
EQUITY



USER EXPERIENCE



HEALTH



- LA River
- Project Corridor
- Neighborhood Boundary
- Equity Focus Communities

Within the LA River Path project corridor:

76,000

people live within walking distance of the Los Angeles River (1/2 mile)

OF THE **1 MILLION**

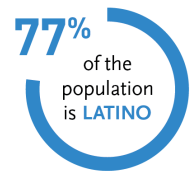
people who live within biking distance of the Los Angeles River (3 miles)

17% of working-age people
WALK, BIKE, or TAKE TRANSIT

Median household income is

\$61,000

23% live in
POVERTY



Existing Conditions and Right of Way

- Utility Towers and Power Lines (LADWP)
- Active Freight (BNSF/UP) and Passenger Rail (Amtrak/Metrolink)
- Total of 30 Bridges (10 Historic; 3 Potentially Historic)



- Property Ownership
 - ✓ Metro: **<1%**
 - ✓ City of Los Angeles, including LADWP: **45%**
 - ✓ County of Los Angeles: **35%**
 - ✓ Private (mostly in Vernon): **19%**
- Flood Control – Hydraulic Requirements
 - ✓ US Army Corps of Engineers (USACE)
 - ✓ LA County Flood Control District (LAFCD)

Project Features and Alternatives

Project Features

ACCESS POINTS

- Where users can enter or exit the LA River Path, connecting them to nearby neighborhoods
- May include amenities like wayfinding, seating, and landscaping



PATH TYPES

- 3 Path Types
- Elevated
 - Incised
 - Top of Bank



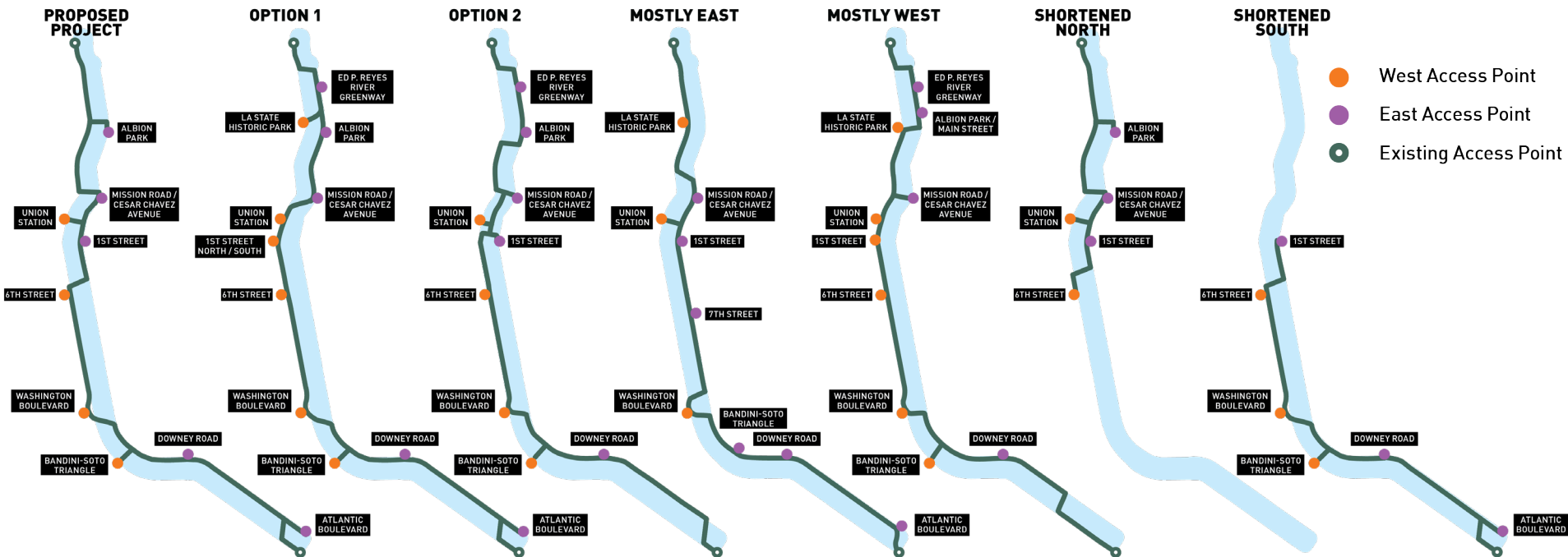
Incised Path

BIKE-PED BRIDGES

- 2 Bridge Types
- Multi-span
 - Single-span



Alternatives Considered in the Draft EIR



For presentation purposes – NOT TO SCALE
For context: the Option 1 is the closest to the Measure M-assumed design

Comparison of Alternatives Considered in the Draft EIR

PROPOSED PROJECT	OPTION 1	OPTION 2	MOSTLY EAST	MOSTLY WEST	SHORTENED NORTH*	SHORTENED SOUTH*
Closes 8-mile gap (Riverside Dr. to Atlantic Blvd.)					Closes 3.2-mile from North (Riverside Dr. to 6 th St.)	Closes 5-mile from South (1 st St. to Atlantic Blvd.)
7 New Bridges	6 New Bridges	7 New Bridges	5 New Bridges	6 New Bridges	4 New Bridges	4 New Bridges
9 New Access Points <i>5 on East Bank</i> <i>4 on West Bank</i>	11 New Access Points <i>5 on East Bank</i> <i>6 on West Bank</i>	9 New Access Points <i>5 on East Bank</i> <i>4 on West Bank</i>	9 New Access Points <i>6 on East Bank</i> <i>3 on West Bank</i>	10 New Access Points <i>4 on East Bank</i> <i>6 on West Bank</i>	5 New Access Points <i>3 on East Bank</i> <i>2 on West Bank</i>	6 New Access Points <i>3 on East Bank</i> <i>3 on West Bank</i>
Direct access to 9 communities	Direct access to 10 communities	Direct access to 9 communities	Direct access to 7 communities	Direct access to 9 communities	Direct access to 6 communities	Direct access to 5 communities
Elevated: 46% Incised: 26% Top of Bank: 28%	Elevated: 56% Incised: 35% Top of Bank: 9%	Elevated: 47% Incised: 34% Top of Bank: 19%	Elevated: 47% Incised: 28% Top of Bank: 24%	Elevated: 35% Incised: 48% Top of Bank: 17%	Elevated: 16% Incised: 28% Top of Bank: 2%	Elevated: 29% Incised: 20% Top of Bank: 24%
Benefit to Community: HIGH			Benefit to Community: MEDIUM		Benefit to Community: LOW	

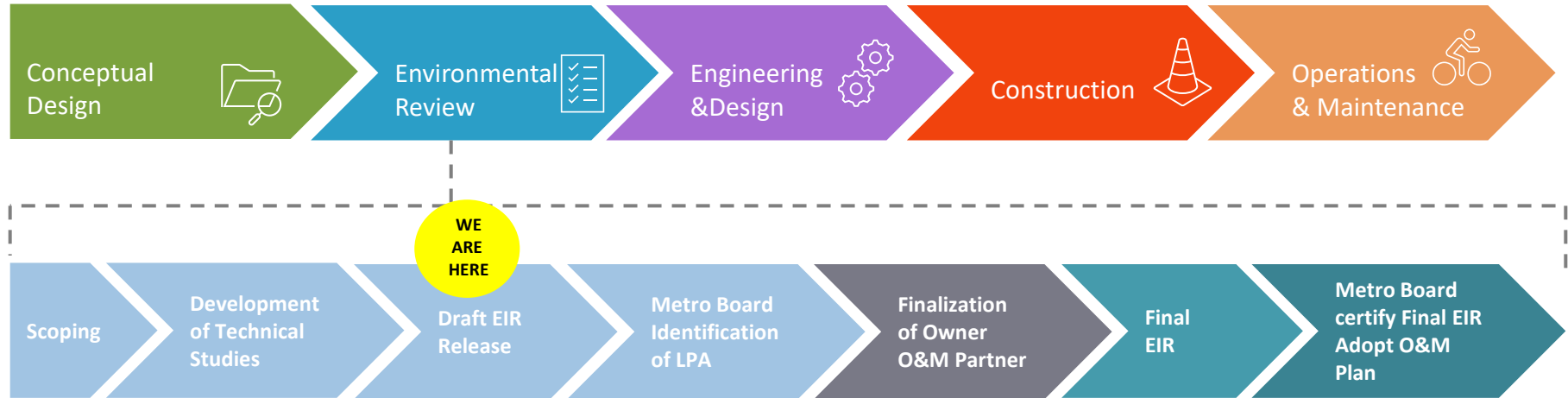


Notes:

*Shortened North and Shortened South Alternatives are partial segments of the Proposed Project. The Percentage of Path Typology is expressed as % of the entire 8 miles to provide consistency in comparison of Path Typology Distribution between the Alternatives.

Draft EIR and CEQA Findings

Environmental Review Process



- Metro released the Draft EIR on Dec 18, 2025, with the 47-days Public Review period ending on Feb 02, 2026
- After public review of Draft EIR, Metro Board will consider identifying a Locally Preferred Alternative (LPA)
- Concurrently, Metro will seek to Finalize the Owner, Operation, and Maintenance Agency for the Project
- Finally, with identified O&M agency and project delivery and funding plans, Metro Board will certify the Final EIR and adopt O&M Plan

What is a Environmental Impact Report (EIR) and why is it important?

It's a formal study, required under the California Environmental Quality Act (CEQA), that:

- Analyzes the significant environmental impacts of each alternative
- Evaluates the impacts of each alternative on 18 environmental resources and other resources per CEQA
- Identifies ways to reduce or “mitigate” significant impacts where feasible
- Provides an opportunity for the public to review and weigh in before Metro moves forward



Why does the Project matter to Metro?

- Provides safe alternative mode of transportation, especially for those who solely rely on public transportation
- Expand equitable access to jobs, housing, schools, and healthcare, by providing transportation infrastructure, especially to underinvested communities

Environmental Resources Evaluated in the Draft EIR

- Aesthetics
- Air Quality
- Biological Resources
- Cultural Resources
- Energy
- **Geology**
- Green House Gas
- Hazardous Material
- Hydrology / Water Quality
- Land Use
- **Noise / Vibration**
- Population / Housing
- Public Service / Safety
- Recreation
- Transportation
- Tribal Cultural
- Utilities
- Wildfire
- Other resources per CEQA

Draft EIR Findings for All Alternatives

- No Long-Term environmental impacts
- Unavoidable temporary construction impacts to Geology and Noise/Vibration only



Note: bold font identifies the resources that will have unavoidable temporary construction impacts

Significant & Unavoidable Construction Impacts Geology & Noise/Vibration

Geology

Significant & Unavoidable Impact: Have the potential to directly or indirectly impact unique paleontological resources

Mitigation measures implemented would decrease the risk, but construction of the river crossings and elevated top-of-bank would require substantial excavation that would increase the potential of impact to paleontological resources

Noise and Vibration

Significant & Unavoidable Impact: Temporary or periodic increase in noise and vibration levels that exceed FTA impact criteria

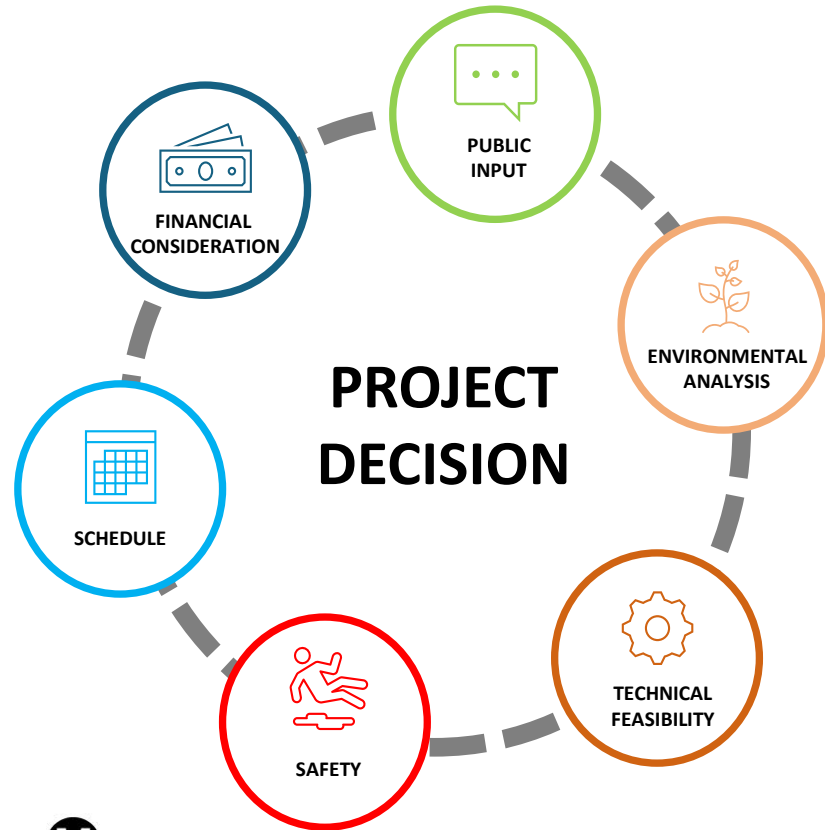
Mitigation measures implemented do not reduce noise and vibration thresholds during construction

Summary of Potential CEQA Environmental Impacts for All Alternatives

Level of Impact	During Construction		During Operations (after completion of project)	
Significant & Unavoidable	Geology Noise / Vibration			
Less than Significant with Mitigation	Biological Resource Cultural Resources Hazardous Materials Hydrology and Water Quality Tribal Cultural		Hydrology and Water Quality	
No Impact/ Or Less than Significant	Aesthetics	Air Quality	All resources under “During Construction.”	
	Energy	Greenhouse Gas	+	
	Land Use	Population/Housing	Biological Resources	Cultural Resources
	Public Service / Safety	Recreation	Geology	Hazardous Materials
	Transportation	Utilities	Noise / Vibration	Tribal Cultural
	Wildfire			

Next Steps

What's coming up after the Public Commenting Period



- Develop Locally Preferred Alternative (LPA) for Metro Board's Consideration including
 - ✓ Understanding of community comments
 - ✓ Develop a Phasing Plan to determine initial segments to be constructed
 - ✓ **Identify agency partners to construct, operate and maintain the completed project**
 - ✓ Negotiate and Adopt Operation and Maintenance (O&M) agreement with partnering agency stakeholders
- For inclusion in the Final EIR:
 - ✓ Review and respond to public comments
 - ✓ Include a Mitigation Monitoring and Reporting Plan (MMRP) to address any project impacts identified in the environmental document

How to Provide Comments

Public Commenting Period and Public Hearings

- **Public Commenting Period: 47 Days (Dec 18, 2025 – Feb 02, 2026)**
- Provide comments by attending any of the four Public Hearing Sessions

January 21, 2026 Wednesday 6:30pm to 8:30 pm	January 27, 2026 Tuesday 6:00 pm to 8:00 pm	January 29, 2026 Thursday 6:00 pm to 8:00 pm	January 31, 2026 Saturday 10:00 am to 12:00 pm
Lincoln Heights Senior Center 2323 Workman Street Los Angeles, CA 90031	Maywood Center for Enriched Studies 5800 King Avenue Maywood, CA 90270	Via Zoom	Felicitas and Gonzalo Mendez Senior High School 1200 Plaza del Sol Street Los Angeles, CA 90033

- Provide comments via
 - ✓ project website comment: <https://us.planengage.com/lariverbikepath>
 - ✓ via email: lariverpath@metro.net
 - ✓ via mail: c/o Mitali Gupta, Project Manager
Metro
One Gateway Plaza, Mail Stop 99-22-6, Los Angeles, CA 90012
 - ✓ via phone: 213-922-7001



Draft EIR Online Commenting Option via PlanEngage

← → ↺ us.planengage.com/lariverbikepath/page/welcome

LA Metro Pages METRO EQUITY LA River Path Metro-CP&D (use t... SGV - ESP2 Misc LA Metro COVID WorkRelated Betar Bani MetroTravel

Metro LA River Path

Welcome

- Executive Summary - English
- Resumen Ejecutivo - Español
- 1.0 Introduction
- 2.0 Project Description
- 3.0 Environmental Settings, Impacts and Mitigation
- 4.0 Other CEQA-Required Sections
- 5.0 Evaluation of Alternatives
- 6.0 Lead Agency and List of Preparers
- 7.0 References
- Appendices
- Acronyms and Abbreviations
- Notice of Availability
- Draft EIR (PDF)

LA River Path

Welcome

Welcome to the LA River Path Project Draft Environmental Impact Report. This site provides a full digital copy of the Draft EIR. Printed copies of the Draft EIR are available at eight locations listed below and in the [Notice of Availability](#), a

Comment

Name *
Enter a response

Mailing Address
Enter a response

Email Address *
Enter a response

Organization/Business
Enter a response

Comment *
Provide your comments here
Enter a response

File Uploads (Optional)
+ CHOOSE FILES Accepted formats: .jpg, .jpeg, .png, .gif, .webp, .svg, .docx, .xlsx, .pdf

Note: Uploaded images will be accessible to the public
Note: 40MB filesize limit per image

DISCARD SUBMIT



<https://us.planengage.com/lariverbikepath>

Public Comment

IT IS NOW TIME FOR PUBLIC COMMENT

You will have one minute to speak

1:00



Stay connected to the project



Metro c/o Mitali Gupta,
One Gateway Plaza, Mail Stop 99-22-6, Los
Angeles, CA 90012



lariverpath@metro.net



metro.net/projects/lariverpath



@metrolosangeles



losangelesmetro