



We're planning a better commute
on the 105.

Interpretation Introduction

- For those seeking Spanish translation:

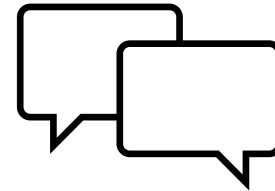
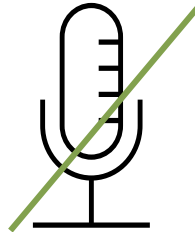
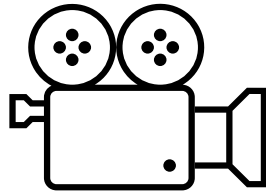


Click the interpretation icon to choose your language

- Select your preferred language (Spanish translation)
- To hear the interpreted language only, click **Mute Original Audio** (Optional).

Housekeeping

- Today's meeting is being recorded
- Attendee cameras are off and microphones are muted. Caption services are available via Zoom
- During the meeting, please use the Q&A icon to submit any questions or comments for our team. There will be a dedicated time for Q & A t the end of the meeting.



Code of Conduct

- Metro is committed to ensuring that all participants can fairly and clearly share ideas, comments and concerns about this project. To provide a safe and equitable process, we are asking for your help.
- **During this meeting, please**
 - Respect the format of the meeting and allow everyone an opportunity to comment
 - Treat fellow community members, agency representatives, Metro staff, and others with respect
 - Address all comments to Metro staff and consultants – not to other attendees



Know Your Rights



AS AN IMMIGRANT, YOU HAVE RIGHTS!

Get support, legal services and protections.

COMO INMIGRANTE, ¡USTED TIENE DERECHOS!

Obtenga apoyo, servicios legales y protecciones.

320 W. Temple St.
Room G10
Los Angeles, CA
90012

800-593-8222

oia.lacounty.gov



- All immigrants, regardless of status, are entitled to basic rights and protections under the law. Understanding these rights is the first step toward safety, empowerment, and accessing essential resources.
- Key Support Services Available:
 - Free or low-cost legal services
 - Language-accessible assistance
 - Resources for navigating immigration issues
 - Protection from fraud, discrimination, and abuse
- oia.lacounty.gov



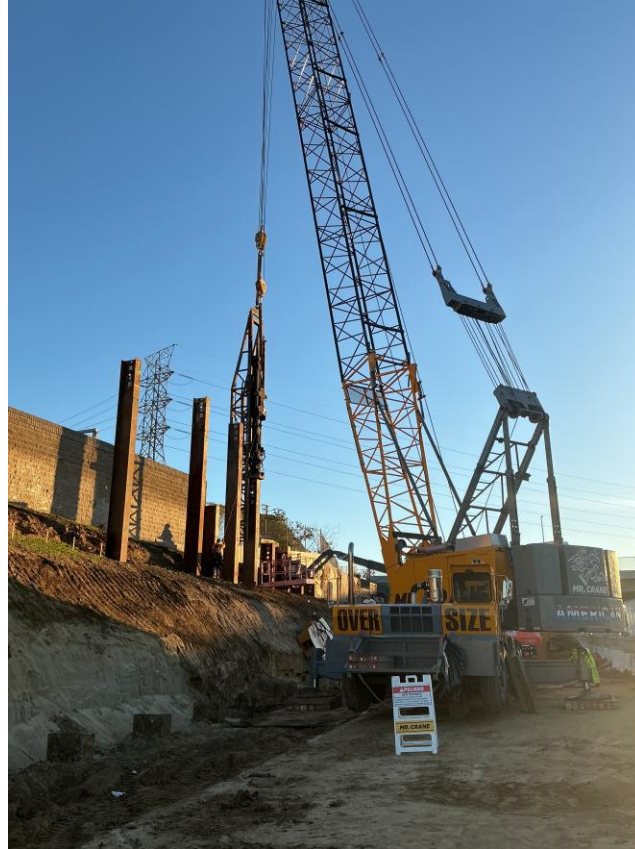
Tap To Exit Is Back!



- TAP-to-Exit resumed on Monday, Nov. 17 at Union Station (B and D Lines) and North Hollywood Station (B Line).
- TAP-to-Exit also launched at Pomona North Station on the A Line on the same day.

Meeting Agenda

- > Project Overview
- > Metro ExpressLanes Operations
- > Equity Assessment Study Update
- > Construction Update
- > Community Labor Participation
- > Questions and Answers



Shoring work activities for retaining wall construction

Project Overview

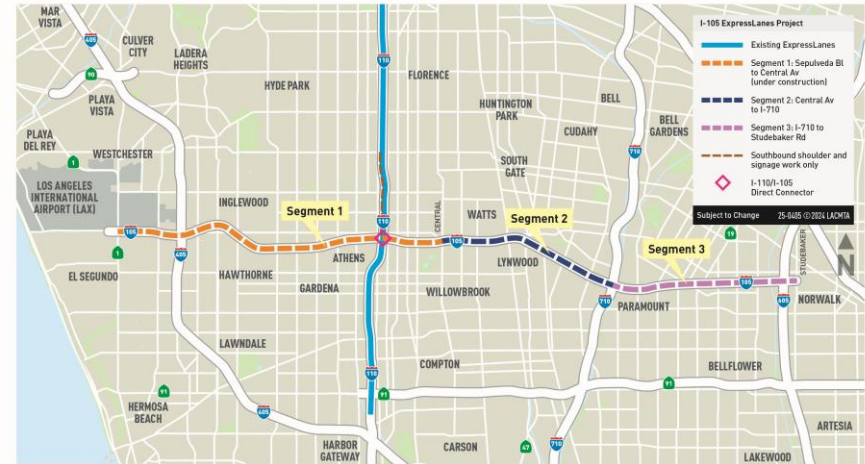


Project Overview

- > Construction converting the existing, I-105 HOV lane to two ExpressLanes in each direction between I-405 and Studebaker Rd
- > Provides more options, access, and connections for all users of the I-105 corridor
- > Segment 1 - currently under construction
- > Segments 2 and 3 - construction anticipated to start mid-2026
- > **No residential Right-of-Way impacts**
- > Is among the projects and improvements of Measure M that was supported and approved by LA County voters including voters in the project area



I-105 ExpressLanes Project Project Area



Project Overview: Benefits

- > **Addresses speed degradation** in the existing HOV lane that is operating at less than 45 mph during peak periods. The ExpressLanes tolling system will use dynamic pricing to maintain speeds above 45 mph.
- > **Enhances operations and improves trip reliability and travel times** within the corridor for HOVs, vanpools, and all commuters and transit service to LAX. General Purpose lanes' traffic flows will be improved.
- > **Enhances highway safety** by addressing an auxiliary lane gap closure and by reducing stop and go traffic conditions, which will in turn reduce rear-end collisions.
- > **Addresses freeway overflow and congestion on local streets** by shifting vehicles in local area streets back onto the freeway and will **improve livability for corridor residents**.

I-105 Current and Forecast Performance

- Existing traffic data:
 - WB AM Peak GP lane end to end average travel time 36 minutes, average speed 26 MPH
 - WB AM Peak HOV lane end to end average travel time 30 minutes, average speed 32 MPH
 - EB PM Peak GP lane end to end average travel time 65 minutes, average speed 15 MPH
 - EB PM Peak HOV lane end to end average travel time 51 minutes, average speed 19 MPH
 - WB AM Peak period is between 6-9AM, EB PM Peak period 1-7PM
- **HOV lanes are classified as degraded per Federal standards**, defined as operating at below 45 miles per hour
- Project is expected to reduce general purpose travel times up to 10%, ExpressLanes speeds expected to be above 45 MPH

Safety Benefits

The I-105 ExpressLanes Project will provide the following safety benefits:

- > New auxiliary lanes between I-710 and Long Beach Bl to improve lane merging
- > Improve traffic flow that will:
 - Reduce stop and go traffic
 - Reduce rear-end collisions
- > Updated lane striping for enhanced visibility during nighttime driving.
- > Channelizers for the buffer zones between ExpressLanes and general purpose lanes reduces illegal traffic merge movements



LOCAL NEWS

Long Beach, South Bay area commute slowed by heavy traffic, accident on 105 Freeway



By GREG YEE | greg.yee@presstelegram.com

UPDATED: September 1, 2017 at 3:56 AM PST



Listen to this article

Long Beach area freeways are clogged and congested this morning.

710 Freeway: Northbound lanes are clear until the 105 Freeway where traffic into the 30s all the way to the I-5. Southbound lanes are mostly clear coming south of the I-5 and into Long Beach.

405 Freeway: Northbound lanes are showing typical slowing with traffic at a crawl from Orange County all the way through the South Bay. Southbound lanes are clear through the South Bay and Long Beach, but slow down into the teens at the Orange County line.

The whole team caring
for the whole you



LEARN MORE



Regal
Medical Group

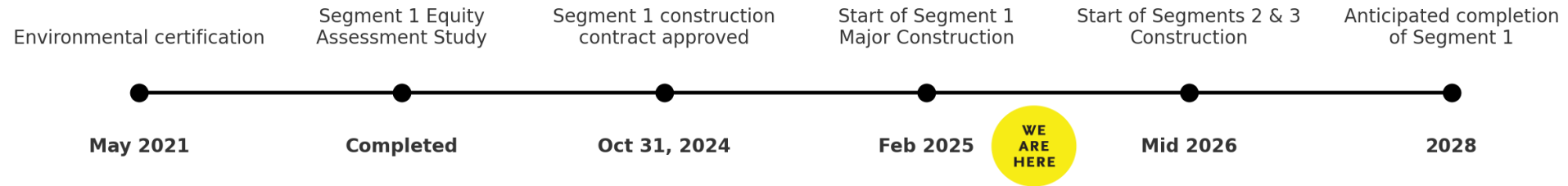


ADOC
Medical Group

The whole team caring
for the whole you



Project Status



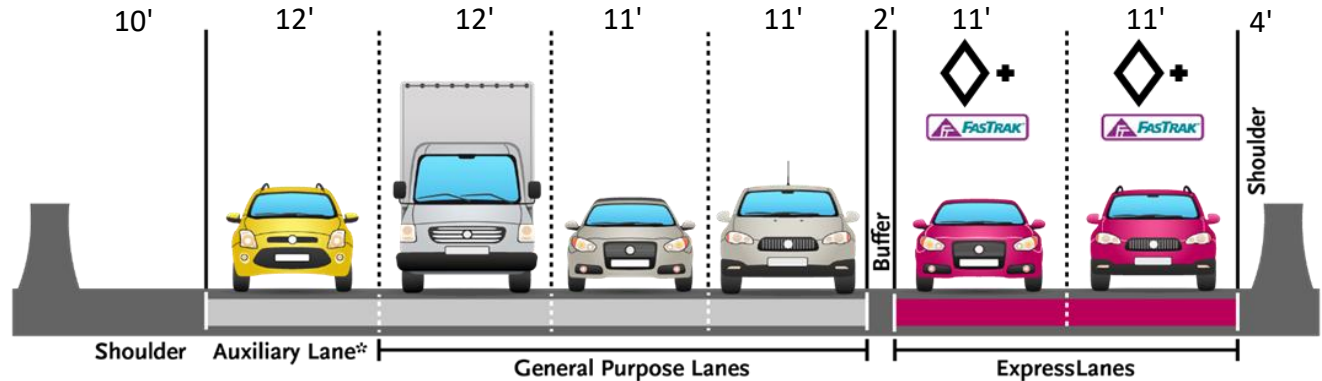
Additional Project Improvements

- > New soundwalls
- > Seismic retrofit of the Alameda Viaduct
- > Multimodal Improvements:
 - The project will **provide funding for improvements at Harbor and Avalon C line stations**, such as lighting, wayfinding, and state of good repair projects
 - The project is **exploring lighting improvements at under crossings** that are being widened as part of Segment 1
 - Future net toll **revenue will be used to fund active transportation, transit, and roadway projects** in the local community along the project alignment

I-105 Freeway New Lane Configuration and Dimensions

The project will utilize non-standard lane and shoulder widths:

- 11 ft. ExpressLanes
- two 11 ft. GP lanes, one 12 ft. GP lane
- 4 ft. left shoulder
- 2 ft buffer between ExpressLanes and GP lanes

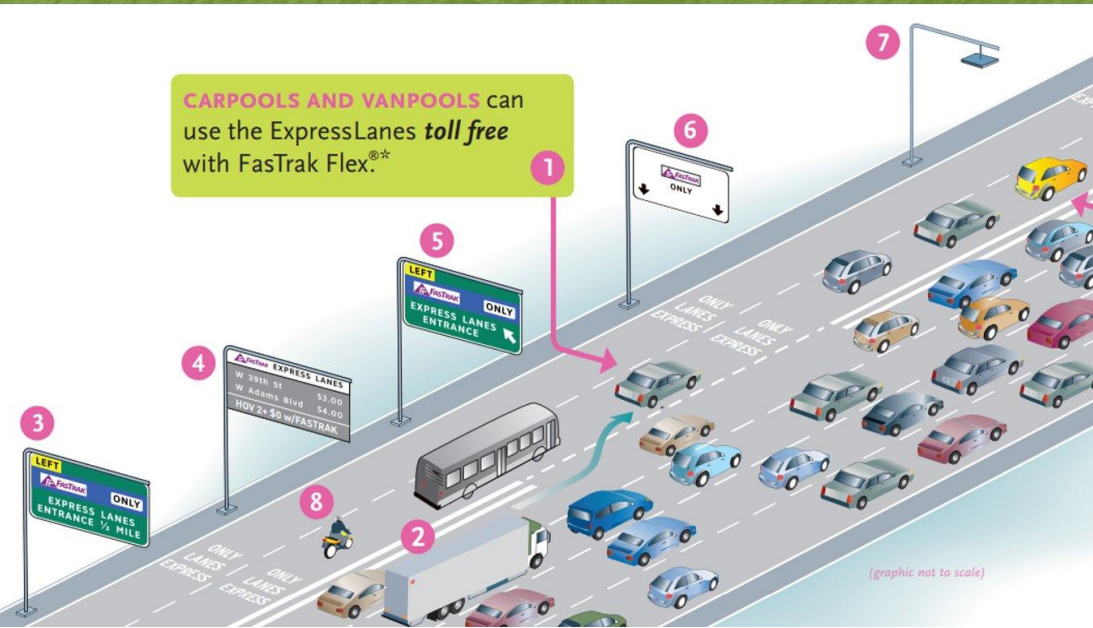


New lane dimensions in feet

Metro ExpressLanes

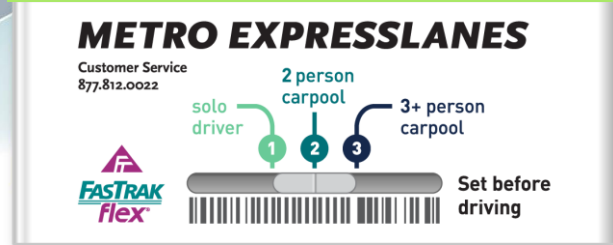


How ExpressLanes Work



Metro ExpressLanes program features:

- ✓ Transit Benefits/Rewards
- ✓ Clean Air Vehicle Discount
- ✓ Low Income Assistance Plan
- ✓ Choices for Solo Drivers
- ✓ ExpressLanes revenue reinvestment
- ✓ For more information, please go to Metroexpresslanes.net



- ExpressLanes users enter/exit at designated locations
- Qualified carpools travel toll-free (with a transponder); switchable transponder must be used to receive carpool discount
- Vehicles can use the ExpressLanes without a transponder but pay \$8+toll

Equity Assessment Study Update



Segment 2/3 Equity Assessment

- > Metro has prepared an equity assessment for segment 2/3 of the project
- > The purpose of the equity assessment is to identify and prioritize potential projects that can be funded with toll revenue generated from the ExpressLanes
- > Metro partnered with twenty-one Community Based organizations (CBOs) to provide input into the equity assessment
- > The Segment 2/3 Equity Assessment executive summary and project list can be found here: [Metro - File #: 2025-0803](#) (the project list is Attachment D and the Equity Assessment is Attachment E)
- > The Segment 1 equity assessment was completed in October 2024 and is available at metro.net/105expresslanes in the Documents section

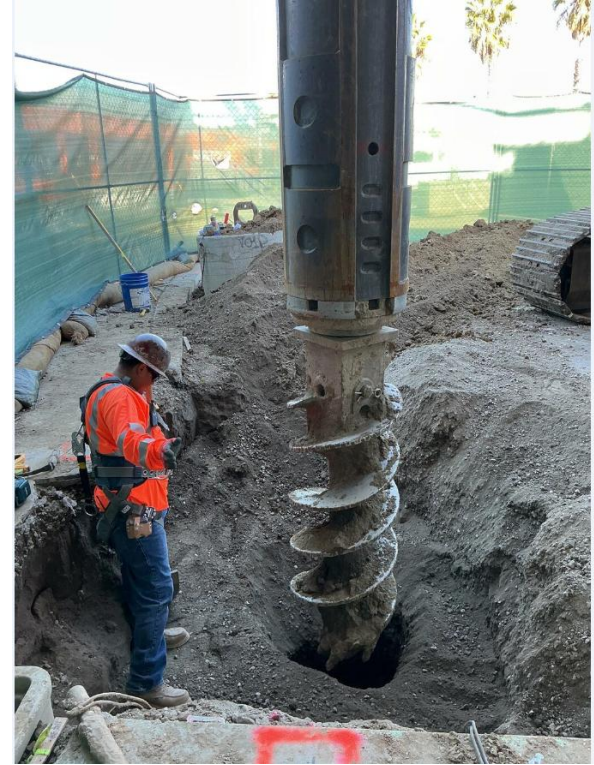


Construction Update



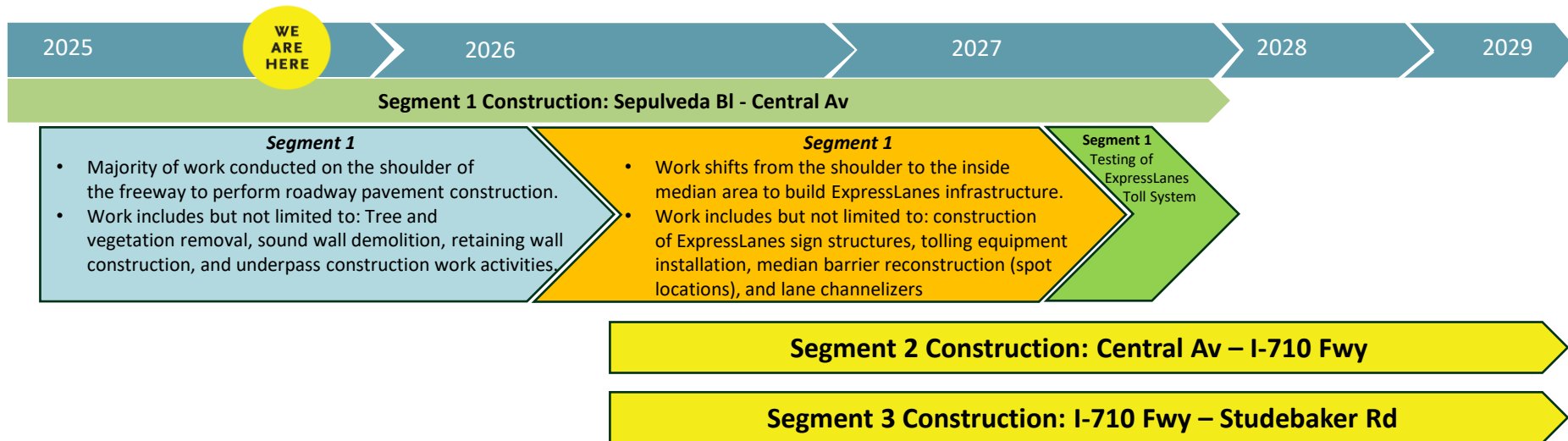
I-105 ExpressLanes Project Construction Work Activities

- > Roadway pavement construction along the shoulder and outer edges of freeway corridor through late 2026
- > New and reconstructed soundwalls and retaining walls
- > Underpass/bridge widenings – Segment 1
 - Stanford Av underpass/bridge
 - Avalon Bl underpass/bridge
 - San Pedro St underpass/bridge
 - Main St underpass/bridge
 - Hoover St underpass/bridge
 - Yukon Av underpass/bridge
 - Dominguez Channel underpass/bridge
- > Added ExpressLanes toll equipment, signage, & pavement markings
- > Landscape and tree removal and restoration



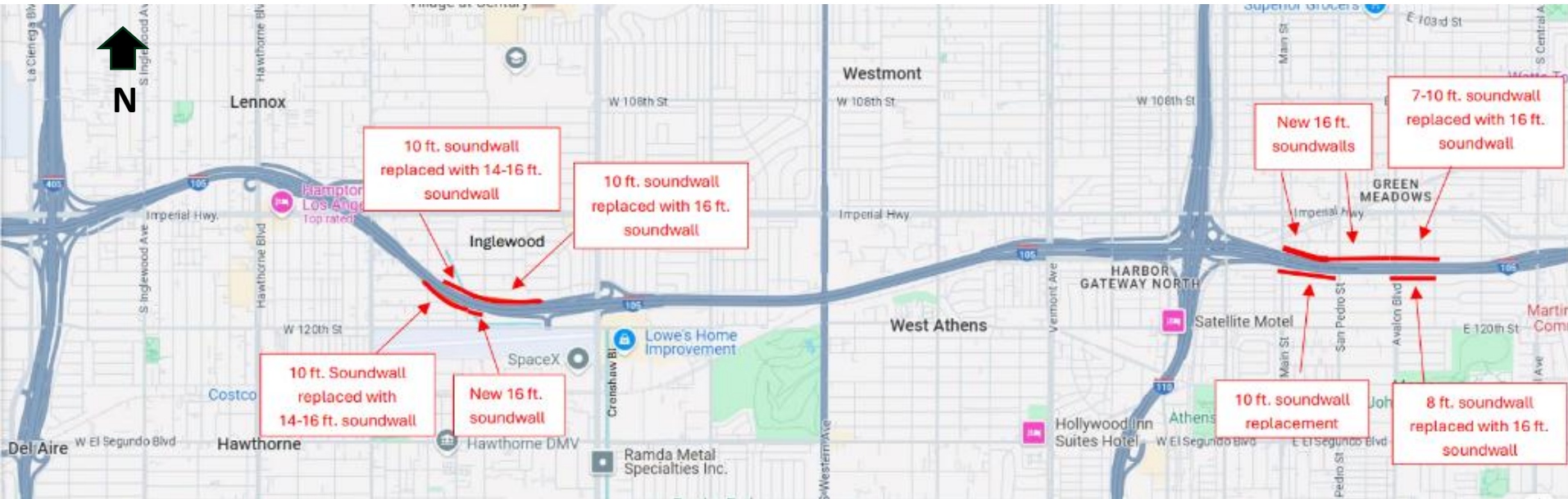
Drilled pile installation at Avalon Bl underpass

I-105 ExpressLanes Project – Anticipated Construction Schedule



Soundwall Construction Locations

Segment 1 Sound Wall Construction



Roadway Pavement/Soundwall Construction

Anticipated Timeline

Spring 2025

Sound wall demolition.

Anticipated work hours are Monday through Friday from 6:30am to 4:00pm.

Spring 2025 to
summer 2025

Vegetation and tree removal, area grading and foundation work for preparation of new sound wall construction.

Anticipated work hours are Monday through Friday from 6:30am to 4:00pm.

Summer 2025 to
early/mid 2026

Sound wall reconstruction.

Anticipated work hours are Monday through Friday from 6:30am to 4:00pm.

Summer 2025 to
Late 2026

Grading, excavation and paving for roadway construction.

Anticipated work hours are Monday through Friday from 6:30am to 4:00pm.

Some intermittent work during the nighttime hours between 8:00pm to 5:00am may be necessary to safely perform work activities.



Roadway Pavement/Soundwall Construction

Main St to Stanford Av

- > Work started late March 2025
- > Mostly day-time work, with some occasional nighttime work
- > Most work conducted behind k-rail (concrete barriers) within Caltrans ROW
- > Construction access from the freeway
- > Soundwall reconstruction anticipated to start in summer 2025
- > Roadway pavement construction anticipated through late 2026



Images are a rough approximation of work zone areas

Roadway Pavement/Soundwall Construction City of Inglewood and Hawthorne

- > Work started early April 2025
- > Mostly day-time work, with some occasional nighttime work
- > Most work conducted behind k-rail (concrete barriers) within Caltrans ROW
- > Construction access from the freeway
- > Soundwall reconstruction anticipated to start in summer 2025
- > Roadway pavement construction anticipated through late 2026

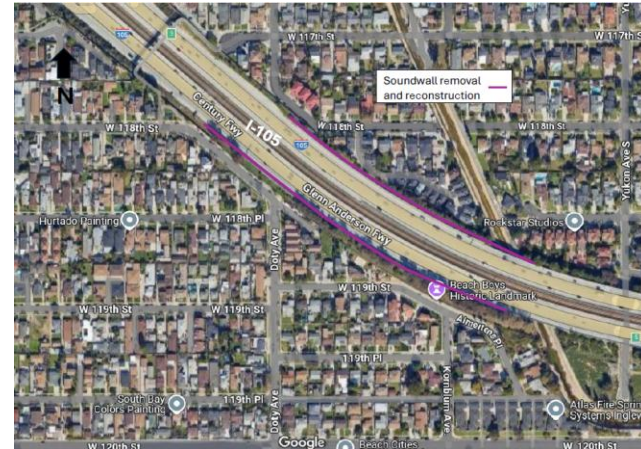
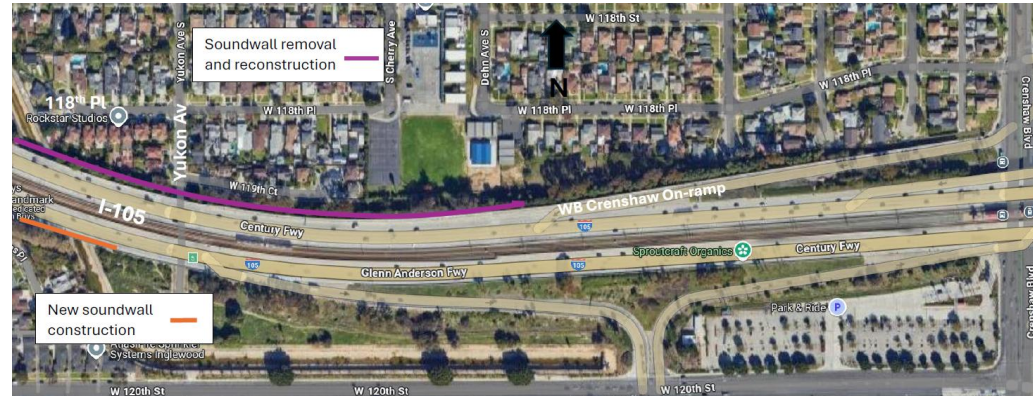


Image is a rough approximation of work zone areas

Underpass/Bridge Construction

- > Construction began May 2025
- > Anticipated completion mid-late 2026
- > Work activities include:
 - Drilled pile installation
 - Barrier and overhang demolition
 - Excavation, bridge foundation and structure work
 - Falsework installation (bridge support structure)
 - Bridge deck installation
- > Work mostly conducted during daytime hours
- > Most work conducted behind k-rail (concrete barriers)
- > Occasional night work including city street closures at I-105 underpass in the City of LA

City of Los Angeles



City of Hawthorne and Inglewood
(No vehicle or pedestrian access)



Images are a rough approximation of work zone areas

Underpass/Bridge Construction



Main St full street closure



Main St falsework (bridge supports structures) installation

Roadway Pavement/Retaining Wall Construction

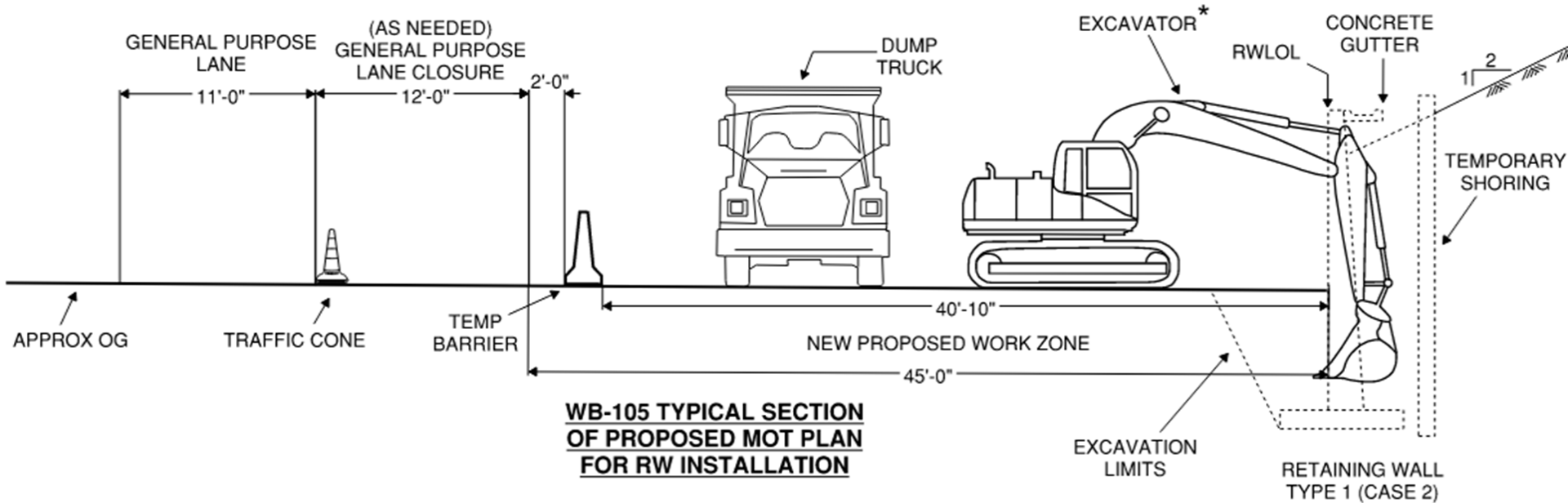
- > Work activities include:
 - Retaining wall construction
 - Excavation, drilling, and grading
 - Roadway pavement construction
 - Landscape removal/restoration
- > Construction at various locations along the corridor
- > Anticipated construction duration from Spring 2025 to mid-2026
- > Mostly daytime work, with some occasional nighttime work
- > Most work conducted behind k-rail (concrete barriers)
- > Nighttime freeway lane reductions and ramp/connector closures as needed
- > Construction access from the freeway



I-105 retaining wall construction

Roadway Pavement/Retaining Wall Construction

Typical retaining wall construction method



Roadway Pavement/Retaining Wall Construction

Typical I-105 retaining wall construction area



Retaining wall construction area along EB and WB I-105 between Western Av to Crenshaw Bl

Western End Corridor Electrical Tolling Work

- > Various locations on city streets adjacent to the I-105 from Nash Av to Inglewood Av
- > Day time work 9am – 3pm
- > Lane closures, some freeway ramp closures
- > Anticipated start date in December 2025
- > Approximate total duration of six months
- > Three weeks anticipated for each street location/phase, 5-6 weeks along Imperial Hwy
- > Work crews may work at multiple streets simultaneously

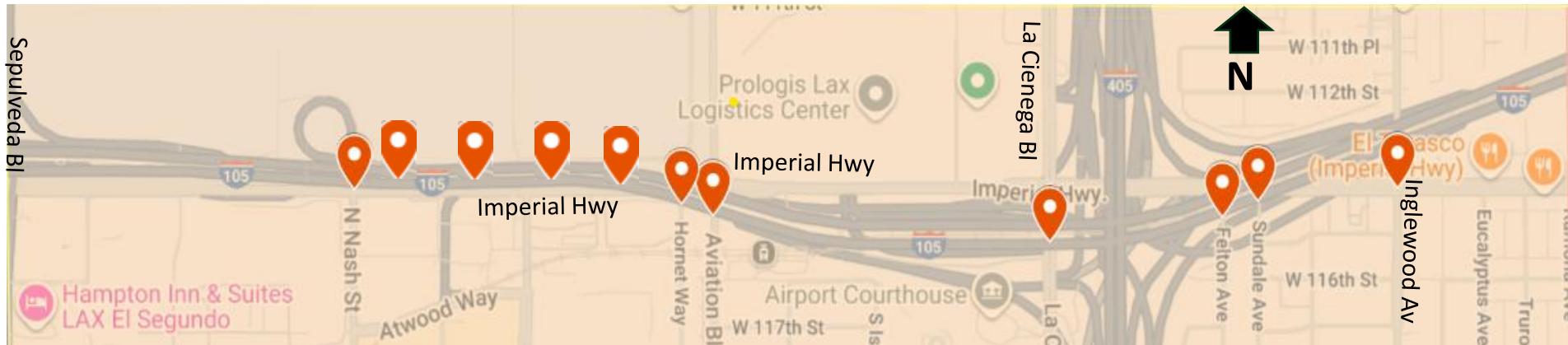


Image is a rough approximation of work zone areas

Intermittent Freeway Traffic Control/Closures

- > Ongoing roadway pavement construction along the shoulder and outer edges of freeway corridor through mid-late 2026
 - Freeway lane closures
 - Intermittent on & off ramp closures
 - Intermittent connector ramp closures
 - > Ongoing electrical work activities on the SB I-110 to support tolling system
 - Freeway lane closures
 - Intermittent on & off ramp closures
 - Intermittent connector ramp closures
 - > Directional freeway closures to support overhead signage removal in early 2026
 - Two nights of directional closures in each direction anticipated
 - Nighttime work activity typically between 11 PM – 5 AM
 - Traffic detour to be implemented
 - Advance signage in place to alert motorists
- M** • Full details to be determined later



Electrical conduit installation at I-105 near Sundale Av

Community Labor Participation



Community Labor Participation

- > FMJV is committed to hiring from the local community.
 - Opportunities for local hires to grow into the company.
 - Provides a runway for apprentices to grow into a career in the building trades.
 - Modern Times, Inc. (MTI) serves as the Jobs Coordinator for the project. MTI is performing the task of vetting the candidates for the FMJV team.
- > To date, FMJV and subcontractors:
 - # of apprentices hired to the project by FMJV and subcontractors: **92 apprentices**
 - Local sponsored apprentice hired by FMJV: **3**
 - Total sponsored apprentices hired by FMJV (including Non-Local): **7**

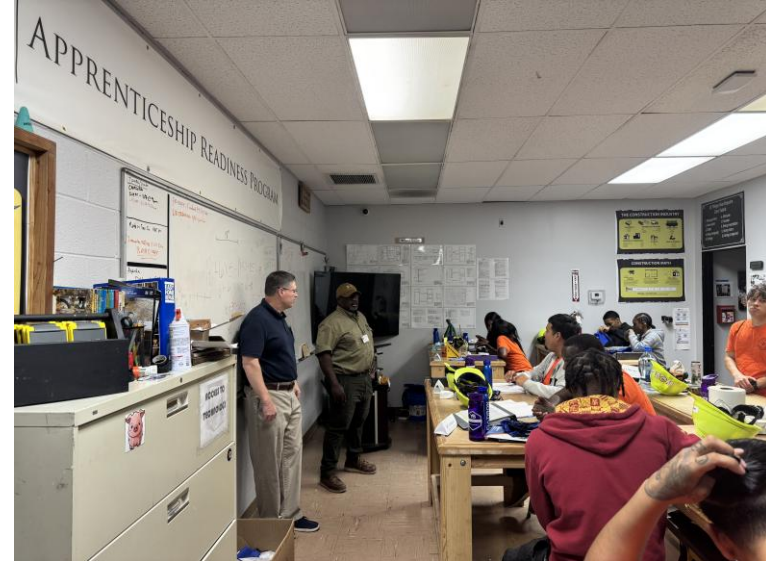


Photo op of the cohort together with their trainer Adrian Manuel and the project team.



Community Labor Participation

- > FMJV recently partnered with 2 local YouthBuild and MC3 Apprenticeship Readiness Program accredited schools:
 - **EntreNous Community Empowerment** – EntreNous is a Compton-based nonprofit organization that provides educational and occupational services to help its members create a sustainable future for themselves, their families and communities.
 - **Coalition for Responsible Community Development (CRCD)** is a place-based community development corporation in South Los Angeles with a unique focus on young people ages 14–26. CRCD is committed to partnering with residents, businesses, community-based organizations, civic leaders, and the local community college to improve the quality of life in South Central LA.



Marty Pettee and Glenn Polk of FMJV providing Q&A to the cohort.

Community Labor Participation

Data as of Oct. 31, 2025

- > Total Project Hours Percentage Completed: **14.03%**
- > Project Labor Agreement Goals to date:
 - Local Targeted Workers: **31.18%** (*Goal is 40.00%*)
 - Apprentice: **14.40%** (*Goal is 20.00%*)
 - Disadvantaged Workers: **8.90%** (*Goals is 10%*)



Demographic Summary Report

Demographic Summary by Number of Workers							
Report Date through OCTOBER 31, 2025*							
African American	Asian / Pacific Islander	Caucasian	Hispanic	Native American	Other / Declined to State	Male	Female
75	6	146	659	3	176	1,038	27
1,065						1,065	

Stay connected to this project.



213.922.6565



105ExpressLanes@metro.net



Metro.net/105expresslanes

Questions & Answers

