



We're bringing you a better bus experience.

SUNSET BL BUS PRIORITY LANES PROJECT



FALL 2025


Welcome!


We will begin in a few minutes

¡Bienvenidos!

Comenzaremos en unos minutos

Interpretation Available

-  > Click on the “Interpretation” icon
- > Pick the language you would like to listen to, either English or Spanish
- > To hear the interpreted language only, click “Mute Original Audio”

-  > *Haga clic en el icono de “Interpretation”*
- > *Escoja la opción para escuchar en inglés o español*
- > *Para escuchar solo español, haga clicen “Mute Original Audio”*

Meeting Format

Today's meeting is being recorded.



Attendee cameras are off and microphones are muted



During the presentation, questions can be submitted using the Q&A icon



Spanish interpretation is available

Thank you for joining us!

Agenda

- > Metro Bus Improvement Goals
- > Project Overview
- > Upcoming Work
- > Questions & Answers



Metro Bus Priority Lanes

We're bringing
you a better
bus experience.



Project Team Members

Tito Corona

Senior Manager, Community Relations, Bus Speed & Reliability Initiatives

James Shahamiri

Senior Director, Project Engineering, Shared Mobility



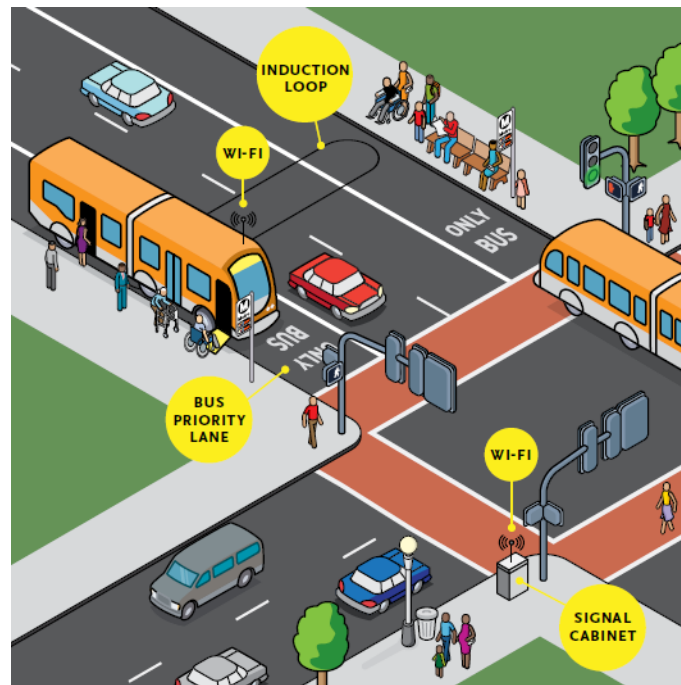
Improving Bus Service in LA

- > **Partnering with City of LA** to improve speed, frequency, and reliability of bus service
- > **City of LA adopted Green New Deal in 2015 (updated in 2019)**: supports improving travel time on LA County's bus network by 30 percent in 2028
- > **City of LA adopted Mobility Plan 2035 in 2016**: recommends strategic corridors of bus lane improvements for a Transit Enhanced Network
- > **NextGen Bus Plan approved by Metro Board in October 2020**: four rounds of NextGen service changes implemented (Dec 2020, June 2021, Sept 2021, Dec 2021)



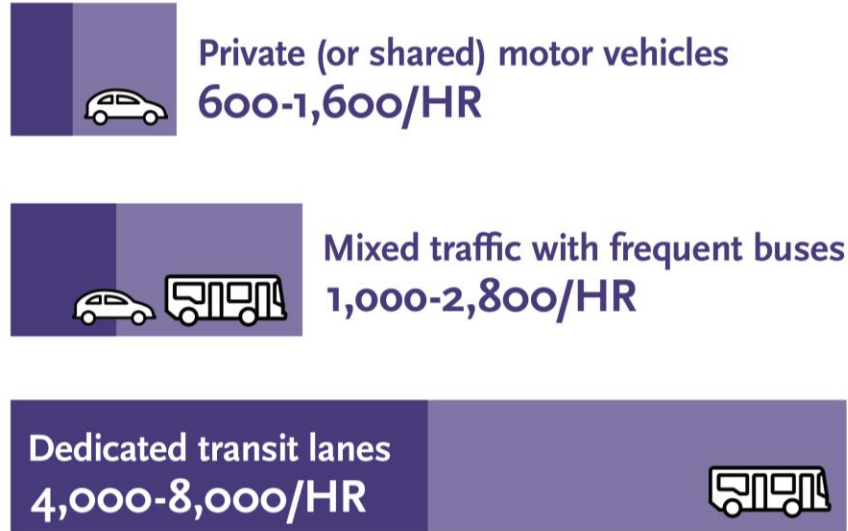
Support NextGen Bus Plan Implementation

- > Priority bus supportive infrastructure projects
- > Working Group with Metro and LADOT staff
- > Opportunities for coordination where bus delay hotspots exist



People Moving Capacity

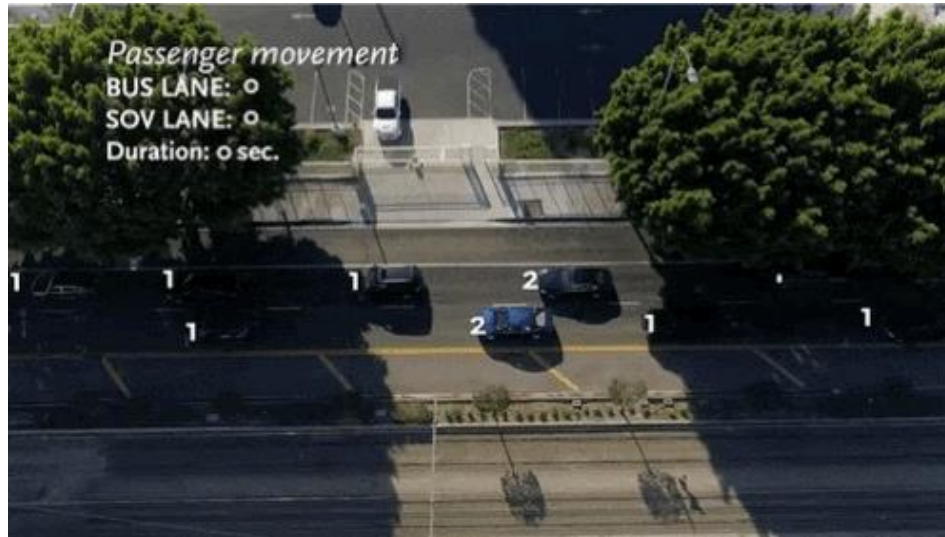
- > **Increase capacity** to move more people without expanding local streets and roadways
- > **Improve efficiency** by prioritizing high occupancy modes of travel



Data Courtesy of NACTO Transit Center

Bus Lanes

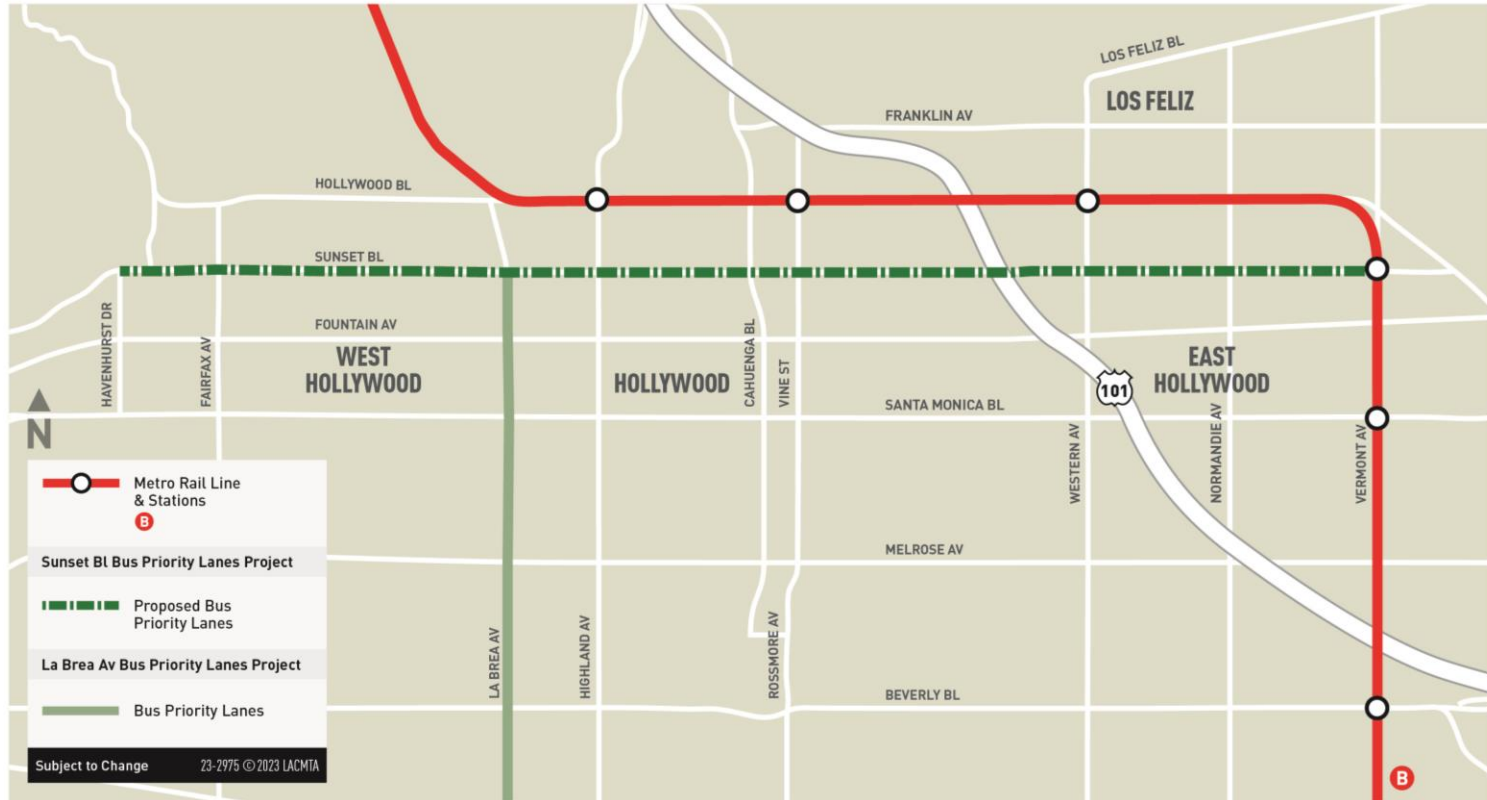
- > Improve bus speeds by up to 15%
- > Increase service frequency and reliability
- > Move more people without adding more infrastructure



“A faster lane for buses means a faster ride for you.”

Project Map

Sunset Bl Bus Priority Lanes Project



Project Overview

Project Segment

- > 4.3 miles: Vermont Av → Havenhurst Dr
- > Vermont Av → US-101: Weekdays, 3–7 PM
- > US-101 → Havenhurst Dr: Weekdays, 7–10 AM & 3–7 PM
- > Buses every 7–8 minutes

Key Facts

- > **19,400** total daily Metro boardings
- > **111,793** residents along the corridor
- > **59,705** jobs along the corridor



People Taking Transit on Sunset Bl

Line 2 Customer Survey Results (Fall 2023)

- > **92%** are people of color
- > **8 in 10** do NOT own a car and **RELY** on bus service
- > **8 in 10** are below the poverty line
- > **9 in 10** take Metro at least several times per week



How Bus Lanes Would Work

Lane Conversion & Operations

- > Curb lanes converted to **bus priority lanes**
- > Buses every **7-8 minutes** during peak hours

Extended Parking Restrictions

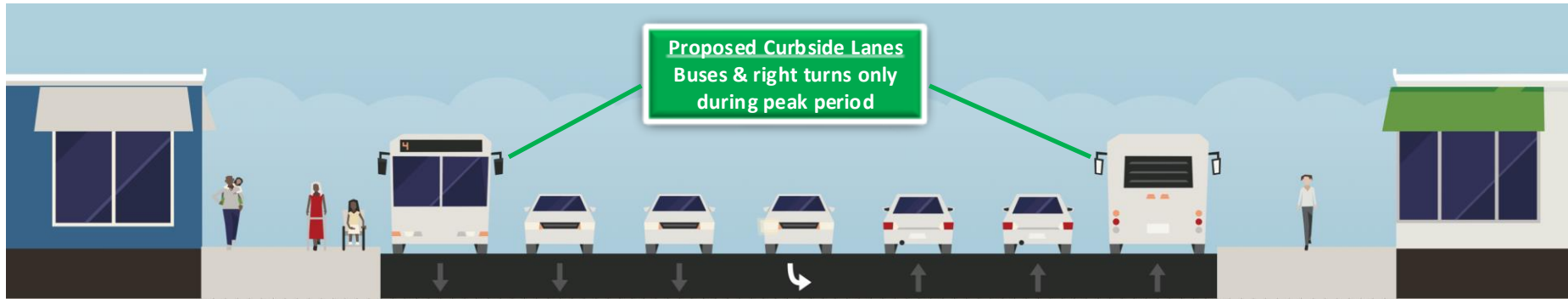
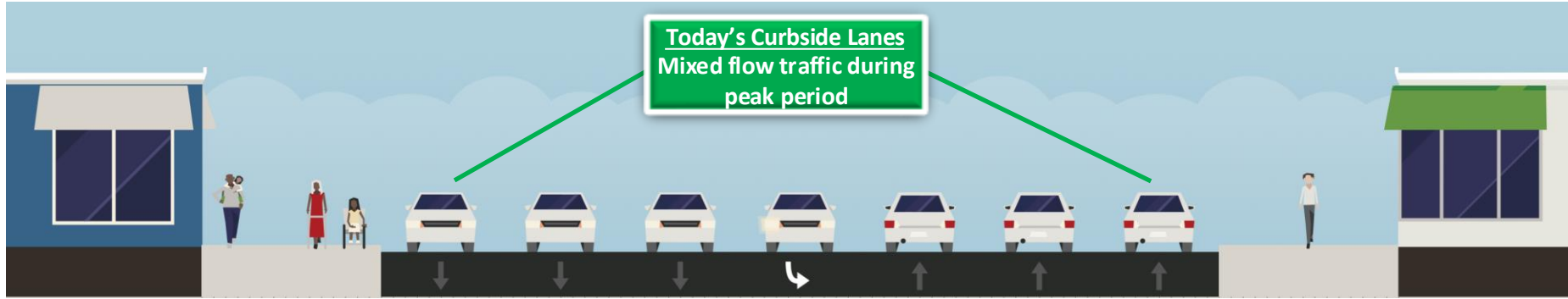
- > **US-101 → Havenhurt Dr: 7-10 AM** (was 7-9 AM)
- > **Vermont Av → Havenhurst Dr: 3-7 PM** (was 4-7 PM)

Parking Availability Remains

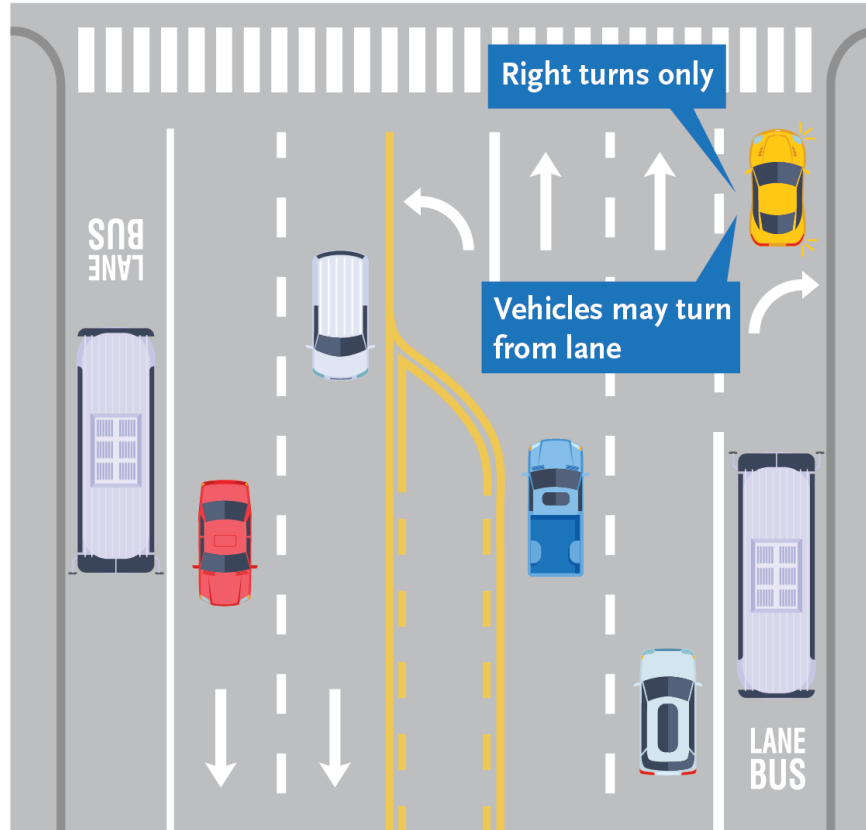
- > Weekday off-peak (mid-day)
- > Weekday evenings
- > Weekends & observed holidays



Existing & Future Conditions



Interacting with a Bus Lane



Traffic Operations

Key Facts

- > Sunset Bl will have **2 through lanes in each direction at all times**
- > **Bus lane acts as a right turn lane** at all intersections
- > Bus lane has **no physical barriers**, can be crossed at any time to access properties or intersections

Traffic Analysis

- > Project analyzed according to LADOT Lane Reconfiguration Guidelines
- > Metro has coordinated with other lane reconfiguration projects in the area
- > **Estimated increase in delay is ~2-3 minutes** between Vermont Av and Havenhurst Dr during the peak-hour

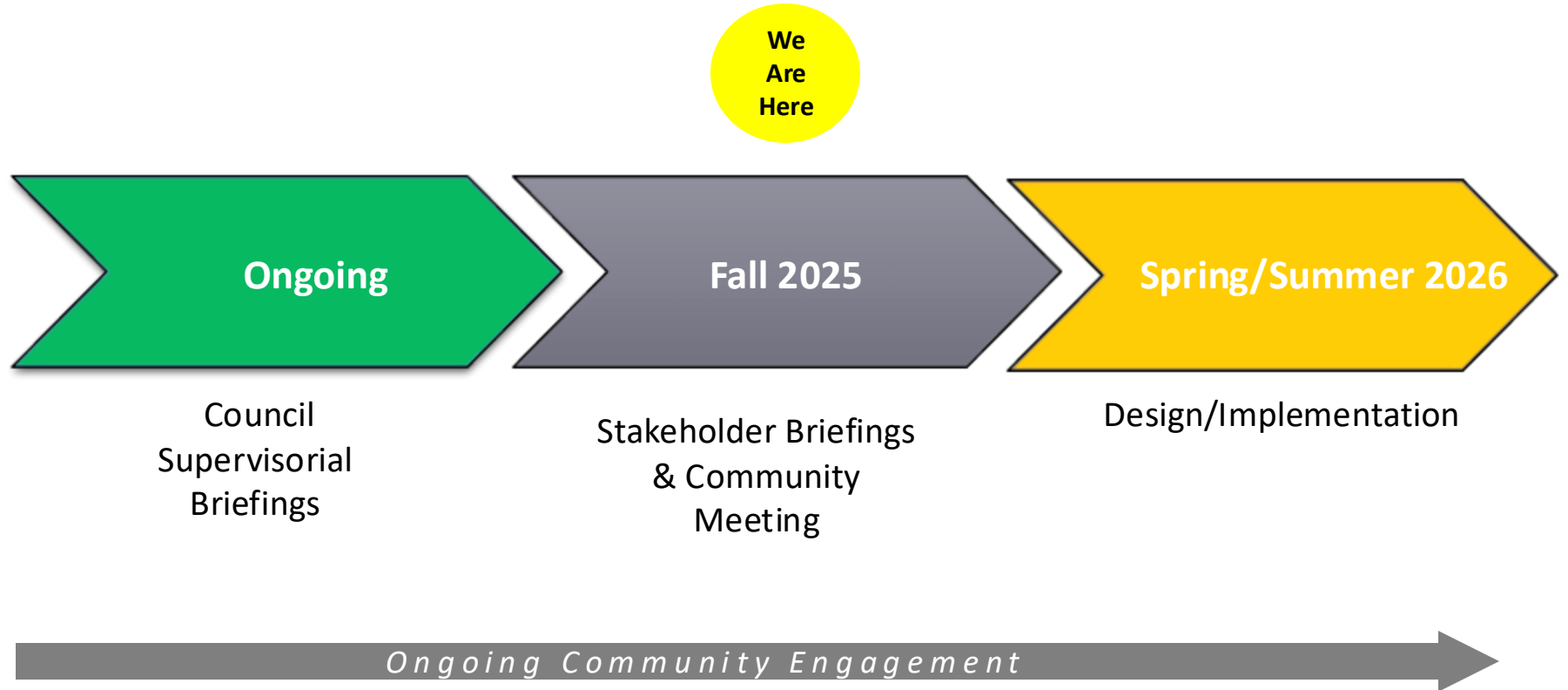


Benefits for All Street Users

- > **Taking Transit:** Faster, more frequent, and more reliable bus service
- > **Walking:** Safer crossings and better access to bus stops
- > **Driving:** Less bus/vehicle conflict, parking preserved mid-day, evenings, weekends, holidays; improved safety in right lanes
- > **Biking:** Option to use bus priority lanes for safer, more predictable travel



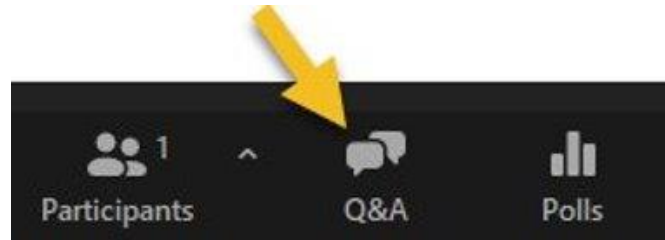
Updated Project Schedule



Questions & Answers



Questions and feedback may be submitted using the **Q&A** function at the bottom of the Zoom screen



Thank you for asking questions with respect and kindness.

Stay Connected to this project



Tito Corona
Senior Community Relations Manager

Project Hotline



213.922.4869



sunsetbl@metro.net



metro.net/sunsetbl

Thank you!



Metro