



We're improving speeds and safety  
on the G Line.

Virtual Community Meeting  
November 18, 2025

G LINE (ORANGE) IMPROVEMENTS PROJECT



# Thank You



[This Photo](#) by Unknown Author  
is licensed under [CC BY-SA](#)





# Housekeeping



**This is a virtual meeting. Attendee cameras are off, and microphones are muted.**

*Esta es una reunión virtual. Las cámaras de los asistentes están apagadas y los micrófonos silenciados*



**Submit your questions by using the Q&A feature**

*Envíe sus preguntas utilizando la función de preguntas y respuestas*



**This meeting is being recorded. Video file will be posted on our website at [metro.net/metrogline](https://metro.net/metrogline)**

*Esta reunión será grabada. La grabación se publicará en nuestro sitio web en [metro.net/metrogline](https://metro.net/metrogline)*



**Simultaneous Spanish interpretation available via Zoom (click “interpretation” icon)**

*Interpretación simultánea disponible por teléfono y por Zoom (haga clic en el icono – “interpretation”)*



**Call-in Options**

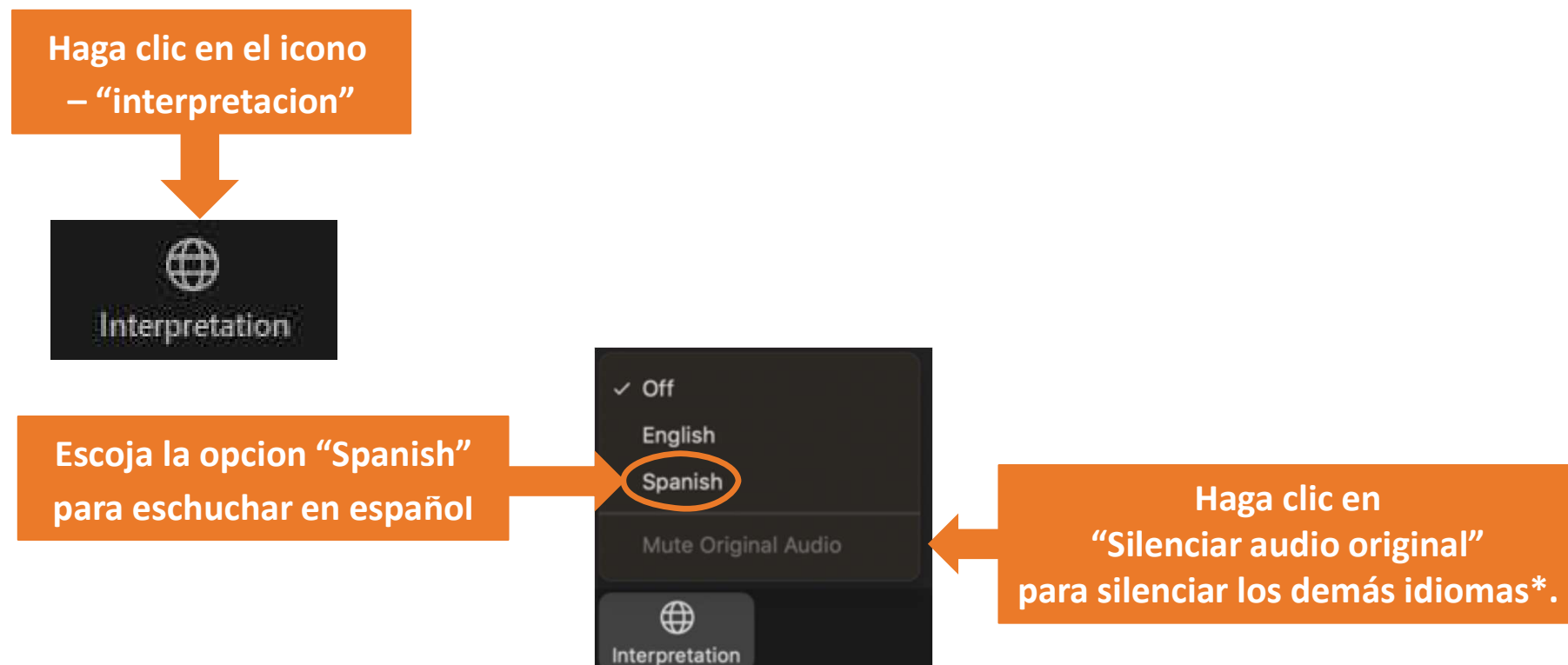
Dial: 213.338.8477

Meeting ID: 893 5754 0482



# Interpretación Disponible/Interpretation Available

Para escuchar la interpretación en español haga lo siguiente:



Esta presentación traducida estará disponible en línea después de la reunión

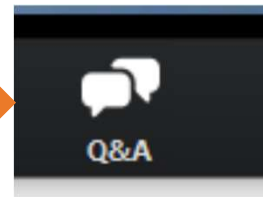


# How to Submit Questions Today

- Use the Zoom Q & A Chat Feature
- All questions and input will be shared with the project team



Click on Q&A Icon to  
Submit Your Questions



# San Fernando Valley: Metro Email Sign-up Page

Subscribe to Metro's San Fernando Valley Area Project Up  
at:

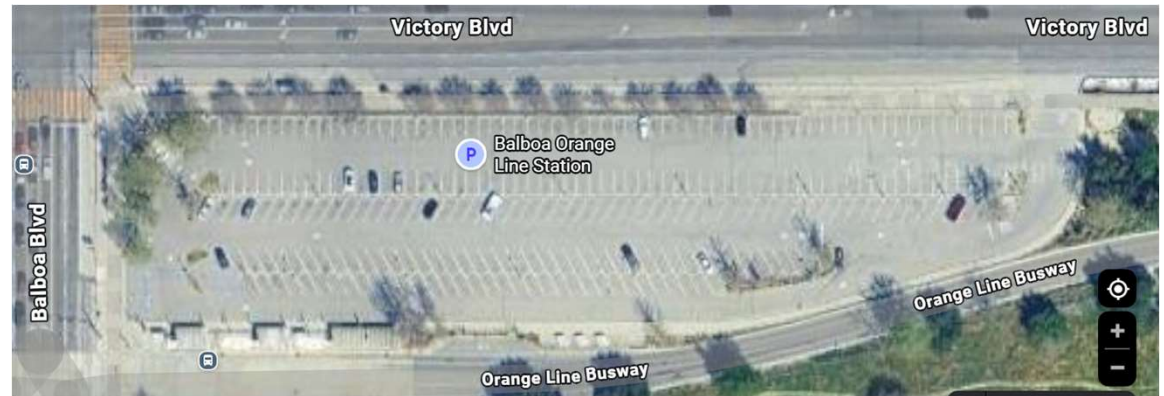
<https://bit.ly/47YKV9o>



# Balboa Parking Lot Closure

## Balboa Parking Lot Will Close December 1, 2025

Metro is partnering with the City of Los Angeles Mayor and City Council District 6 as part of the City's *Inside Safe Initiative*. For more information, visit <https://mayor.lacity.gov/InsideSafe> or scan the QR code.



## Additional parking is available at:

### Pierce College Station

6425 Winnetka Ave  
Woodland Hills, CA 91367  
4.4 Miles West

### Reseda Station

6065 N Reseda Blvd.  
Tarzana, CA 91335  
2.5 Miles West

### Sepulveda Station

15430 W Erwin St.  
Van Nuys, CA 91411  
2.1 Miles East





# Know Your Rights as an Immigrant

- All immigrants, regardless of status, are entitled to basic rights and protections under the law. Understanding these rights is the first step toward safety, empowerment, and accessing essential resources.
- Key Support Services Available:
  - Free or low-cost legal services
  - Language-accessible assistance
  - Resources for navigating immigration issues
  - Protection from fraud, discrimination, and abuse
- For more information: [oia.lacounty.gov](http://oia.lacounty.gov)

The flyer is bilingual, with English and Spanish text. At the top, it features the logos for Los Angeles County Consumer & Business Affairs and the LAC You Office of Immigrant Affairs. The main heading in English is "AS AN IMMIGRANT, YOU HAVE RIGHTS!" followed by the subtext "Get support, legal services and protections." The Spanish version reads "COMO INMIGRANTE, ¡USTED TIENE DERECHOS!" followed by "Obtenga apoyo, servicios legales y protecciones." The bottom section provides contact information: 320 W. Temple St., Room G10, Los Angeles, CA 90012; phone number 800-593-8222; and website oia.lacounty.gov. A QR code is also present for more information.

LOS ANGELES COUNTY  
CONSUMER & BUSINESS AFFAIRS

LAC YOU  
Office of Immigrant Affairs  
Your Rights. Your Resources. Your Future.

**AS AN IMMIGRANT,  
YOU HAVE RIGHTS!**  
Get support, legal services and protections.

**COMO INMIGRANTE,  
¡USTED TIENE DERECHOS!**  
Obtenga apoyo, servicios legales y protecciones.

320 W. Temple St.  
Room G10  
Los Angeles, CA 90012

800-593-8222  
[oia.lacounty.gov](http://oia.lacounty.gov)

# Agenda

Thank you for joining us!

## Welcome and Introductions

**Rosalba Gonzalez**, Facilitator, Community Relations

## Project Overview

## Project Update - Grade Separations

**Annalisa Murphy**, Deputy Executive Officer, Project Manager

## Bike Detour and Bus Detour Phase B Implementation

**Hailey Hudson**, Sr. Manager, Construction Management

## Project Update – Bike Path Improvements and Gated Intersection

**Annalisa Murphy**, Project Manager

## Metro Business Solution Center

**Angela Winston**, Director, Business Solution Center

## Metro Art

**Katie Norman**, Sr. Manager, Public Arts and Design

## Community Outreach Update Q & A

**Rosalba Gonzalez**, Facilitator, Community Relations



# G Line Improvements Project Map



Bridges at Van Nuys Bl, Sepulveda Bl and Vesper Av



Gating and traffic signal reservicing



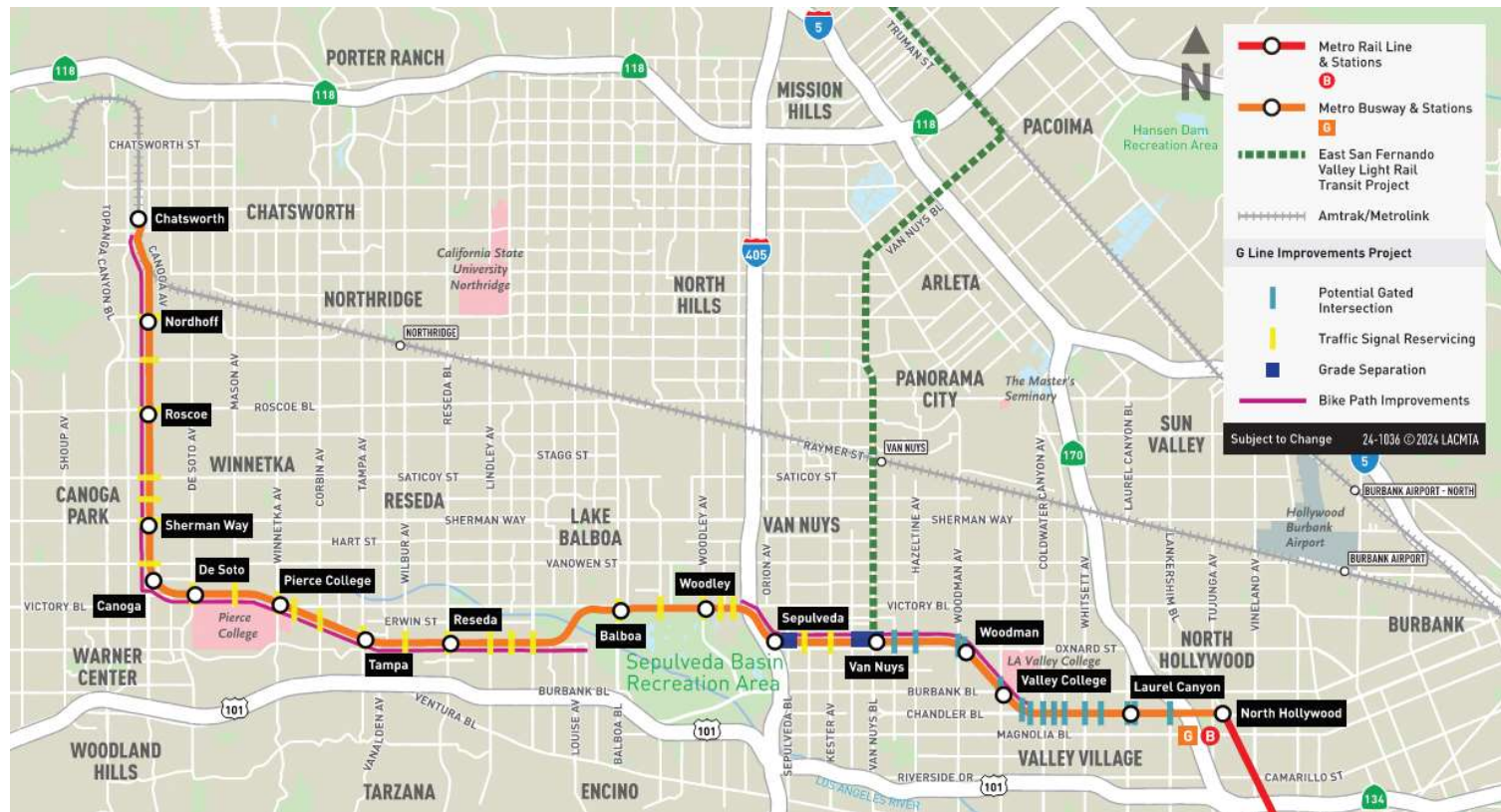
Aerial Station at Van Nuys



Bike Path Improvements

For a G Line that is:

- Safer
- Faster
- Reliable





# Direct Connections to Future Transit Projects

## **Metro G Line connecting to more of Metro's Regional Transit Network through:**

- East San Fernando Valley Light Rail Transit Project
- North Hollywood to Pasadena Bus Rapid Transit Project
- North San Fernando Valley Transit Corridor Improvements Project
- Sepulveda Transit Corridor Project



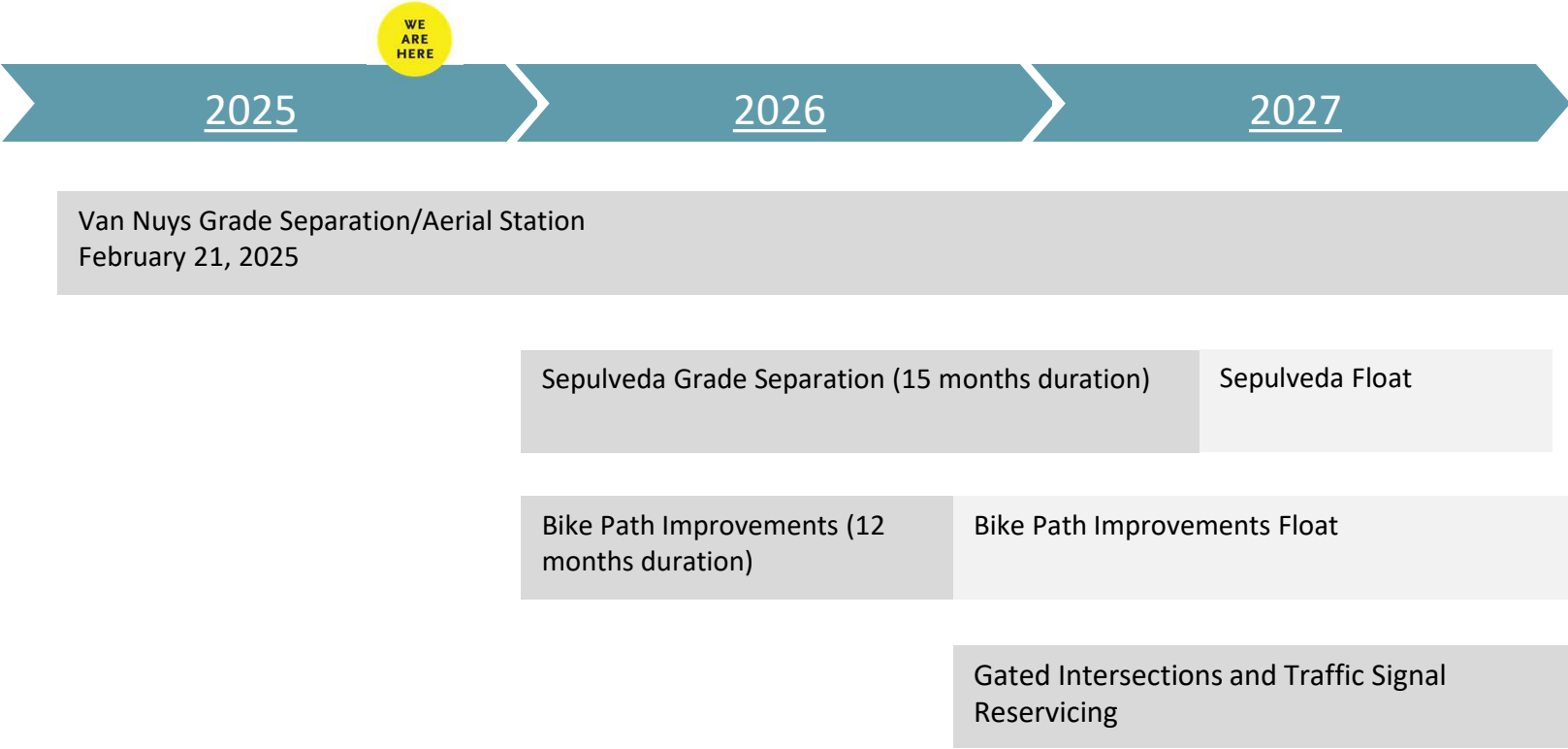
# Connecting the World to the 2028 Summer Olympic Games

The Metro G Line will not only connect residents of the San Fernando Valley and Southern California to more destinations—it will also serve as a vital link for visitors from around the world attending the Summer Olympic Games, including events held at the Sepulveda Basin



- 3 x 3 Basketball
- BMX Freestyle
- BMX Racing
- Modern Pentathlon
- Skateboarding

# Construction Project Schedule





# Future Van Nuys Aerial Station and Bridge



Rendering is for illustrative purposes only.





# Current Project Construction (VTP)



G Line Van Nuys Station (Construction started February 2025)



G Line Van Nuys Station September 2025



G Line Van Nuys Station March 2025



G Line Van Nuys Station November 2025

# Pilot Gate Technology Testing Update

## Why did Metro conduct gate testing?

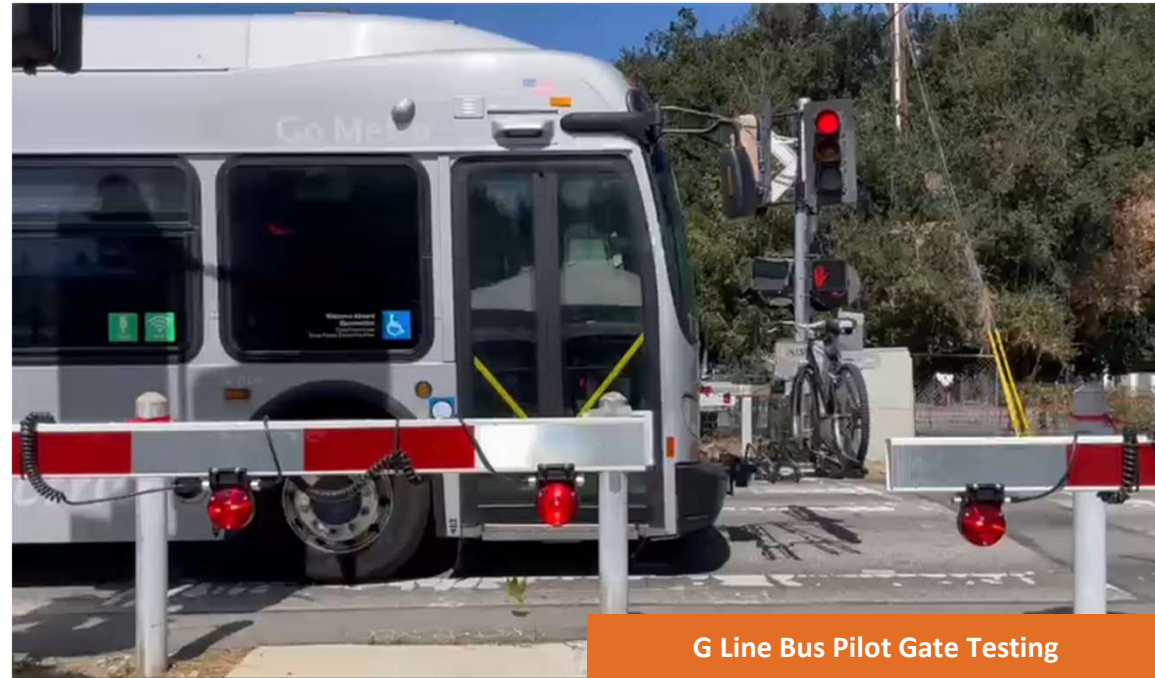
- New technology is being developed to control gates for busway operations, as railroad-style gates—commonly used at rail crossings—are a new application for Bus Rapid Transit (BRT) systems.

## What technology was tested?

- GPS and radio-based gate activation testing

## Where did it take Place?

- G Line Busway and Hayvenhurst Av pedestrian crossing



**Metro anticipates reopening the G Line bus crossing at Hayvenhurst Av as early as this Friday, November 21.**

**Thank you, Lake Balboa, for your patience and understanding as we build a better, safer Metro G Line!**





# About Sepulveda BI Bridge Construction



Rendering is for illustrative purposes only.



# Phase B: Metro G Line Bus Detour between Sepulveda Bl and Woodman Av

## Metro G Line Bus Detour Route anticipated in late Winter 2025-2026 (Dark Blue Line)

- **What to Expect:**

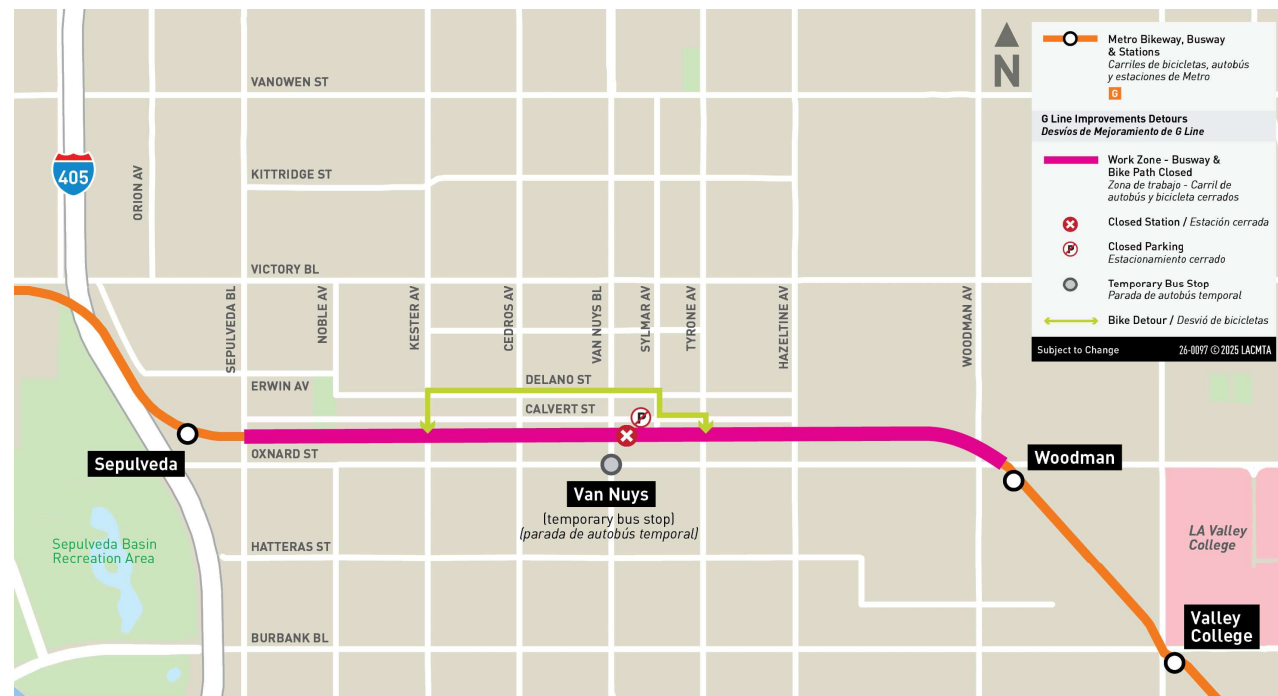
- Metro G Line Sepulveda station platform will be relocated temporarily.
- Haskell Ave will be closed to vehicular traffic
- Parking availability will remain
- Anticipated duration 15 months
- Current Metro G Line Bus detour will be extended to Erwin Street (future temporary bus platform)



# Metro G Line Bike Detour between Sepulveda Bl and Wood Man Av

## Metro G Line Bike Detour Route anticipated in mid-late December 2025 (Lime Green Line)

- Construction of the temporary G Line busway and platform will mean a change to the current pedestrian and bike detour through residential streets.
- Temporary detour will direct pedestrians and cyclists from Erwin St back to the G Line Bike Path at Kester Av.
- Detour will be in effect for 2-4 months.
- Once Sepulveda bridge construction commences, cyclists will be rerouted to the original bike detour on Erwin.

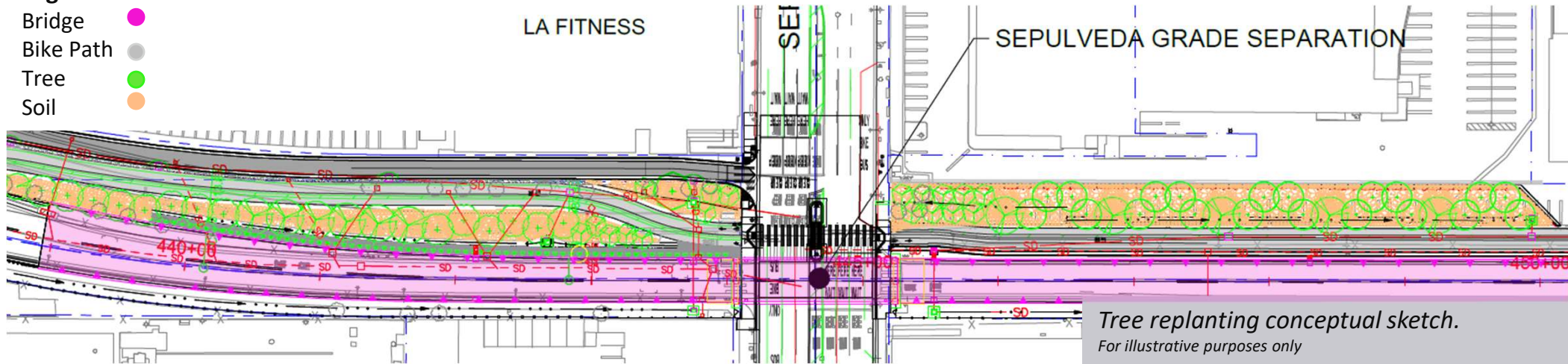




# Tree Plan and Landscape Improvements

## Legend:

- Bridge
- Bike Path
- Tree
- Soil



## Tree Removals

- G Line tree inventory completed
- 342 total planned tree removals to allow for grade separation/station construction between Sepulveda Station and Tyrone.

## Landscape Improvements

- 1 to 1 tree replacement on Metro Right-of-Way
- Mature trees to be planted (approximately 36" vs 24")
- Metro Tree Policy recommends planting California-native or other drought tolerant plants

# Metro G Line Bike Path Improvements

## Bike Path

- Resurfacing
- Striping
- Lighting
- Improved Signage

## Bike Parking

- Bike Racks
  - Nordhoff, Roscoe, De Soto, Pierce College, Tampa, Reseda, Balboa, Woodley, Woodman, Valley Collage
- Bike Lockers
  - Sherman Way
- Bike Hub
  - Van Nuys



Rendering is for illustrative purposes only.



# G Line Rail Gate Construction – Late 2026 through 2027



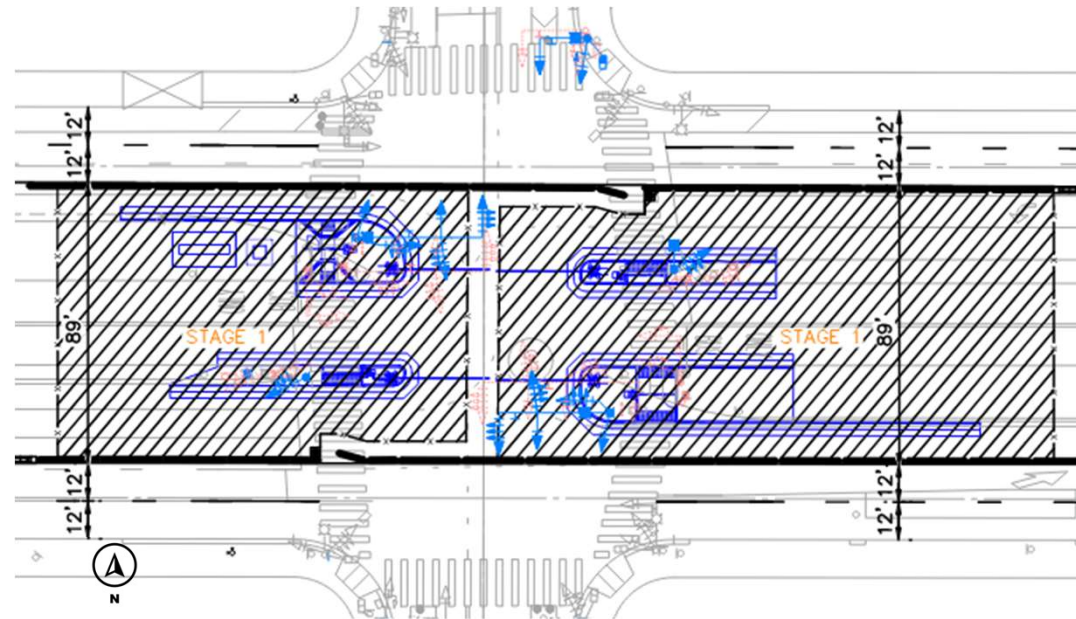
Rendering is for illustrative purposes only.



# Metro G Line Bus Gate Construction Plan

## G Line Busway Coordinated Street Closures and Detours

- Metro anticipates partial closures of north-south intersections at the G Line Bus crossings along Chandler from Ethel Av to Colfax Av. This is necessary to complete the work ahead of the Olympics.
- Closures will alternate between major arterials to maintain traffic flow and access.
- Metro Buses including G Line Bus will be on detour during gates construction.
- Project team is in the process of developing a more detailed plan to share ahead of the start of construction



Conceptual draft for illustrative purposes only



# Improving Traffic Signals for Safer, Smoother Streets

## What are we doing?



- We're upgrading and fine-tuning our traffic signal system to make our streets work better for everyone
- This means:
  - Safer intersections
  - More reliable bus travel
  - Shorter waits
  - Modern technology

## How are we doing this?

- Traffic Signal Reservicing (TSR) – We're replacing the existing LADOT traffic signal system with a new system capable of dynamically sequencing traffic signal phases. We are also implementing improved striping at TSR intersections.



# Business Solution Center



Metro's BSC provides hands-on business support services and technical assistance to small businesses impacted by rail and bus rapid transit construction projects.



Services will be provided at no cost in the form of one-on-one case management, advisory sessions, workshops, classes and presentations.



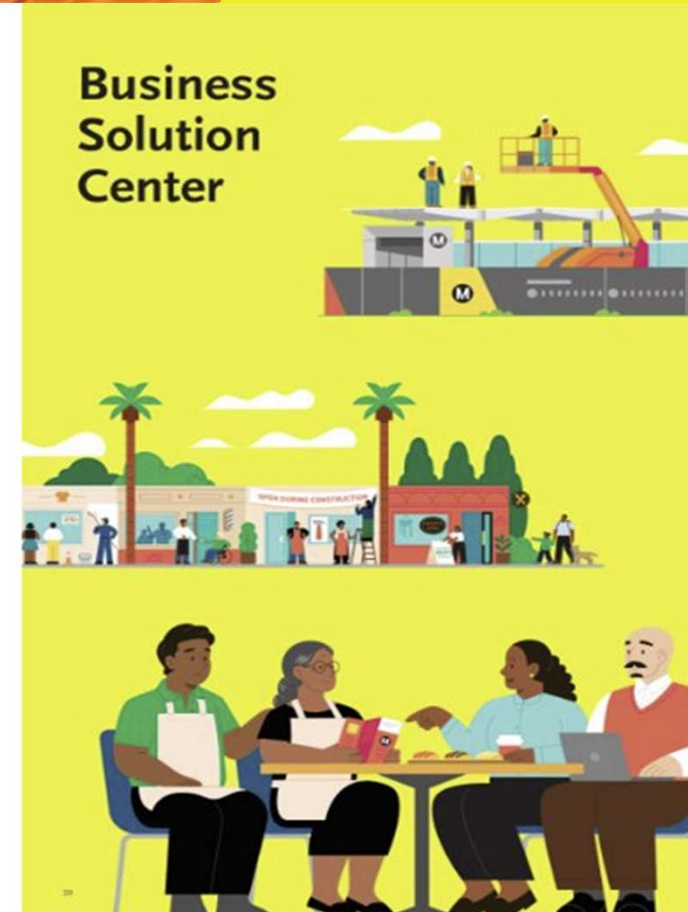
The BSC will first launch on the ESFV and G Line Improvements projects and will be physically located near both project corridors to allow easy access for local small business owners.



The new model will feature a Regional Operator partnering with local community-based organizations to deliver business support services. The BSC is currently in a “black-out” period and the **contract award is anticipated in late Spring 2026.**



## Business Solution Center



# Metro Art

- The Metro Art Policy allocates 0.5% of transit construction costs for public art for the project
- G Line Van Nuys Station will include original, site-responsive public art
- Artists are identified through an open competitive process





# Metro Art

- Call to Artists for G Line and ESFV Stations open July 14 – Sept 22, 2025
- Targeted local outreach included:
  - Sent in Metro Art emails reaching 32K people, Metro Community Relations weekly emails reaching 55K people and monthly newsletters reaching 199K people
  - Shared the Call to Artists with project area community arts organizations
  - 200K postcards distributed in the project area and on the Metro system in English and Spanish
  - Announcements on radio, social media, print and online publications in English and Spanish
- Artist Workshops held at:
  - Pacoima Beautiful, CSUN and Van Nuys Branch Library
  - Virtual Artist Workshop online (1,900 views)
- Media coverage:
  - Los Angeles Magazine and San Fernando Sun







LA'S ARTS CONNECTOR

# Connect with us



@metro.art.la



facebook.com/metro.art.la



bit.ly/metro-art-newsletter



metro.net/art

# 2025 Community Outreach and Engagement

**Metro continues to connect with the community throughout the construction process.**

- **Consistent Stakeholder Engagement:** Provided regular project updates to elected officials, the LA City Bicycle Advisory Committee, 17 of 19 adjacent Neighborhood Councils, and key community organizations including the Sepulveda Basin Wildlife Steering Committee and VICA
- **Targeted Door-to-Door Outreach:** Delivered over 22,000 construction notices to residents and businesses within a ¼-mile radius of active construction zones.
- **Engaged directly with residents at high-visibility events including:** Van Nuys Recreation Center Spring Egg Hunt, San Fernando Valley Pride, National Night Out and Mid-Valley YMCA Back-to-School Fair
- **Gathered community feedback** on construction impacts and detour routes through in-person outreach and bilingual survey tools.



# Summer 2025 Metro G Line Transit Rider Survey Highlights

## Highlights from Transit Rider Survey

- 230 in-person and digital responses (mid-June through early July 2025)
- 85% of those surveyed were daily transit riders
- 54% of transit riders learned about project and detour at the station
- 84% described the bus detour as "excellent" or "good"
- Survey collected at G-Line Van Nuys Station transfer point (Local Lines 154/233/237/761)

Metro will use the transit rider survey findings to refine the transit rider experience and support transit riders with the next phase of G Line Bus and Bike Path Detours.



**METRO G LINE BUS DETOUR**

We want to hear from you.

TRANSIT RIDER EXPERIENCE SURVEY

Complete the survey for a chance to win one of ten **\$10** Starbucks gift cards.

Please take a moment to complete the survey using the QR code below and share your experience with the G Line Improvements Project detour and temporary stop at Van Nuys.



[bit.ly/GLineSurvey](https://bit.ly/GLineSurvey)





## How to Submit Questions Today

- Use the Zoom Q&A Chat Feature
- Due to limited time, we will focus on questions of broadest interest
- All question and input will be shared with the project team



***Thank you for joining us!***

***Please stay connected!***



## Stay connected with us



213.922.2999



[metrocline@metro.net](mailto:metrocline@metro.net)



[metro.net/metrocline](http://metro.net/metrocline)



## San Fernando Valley: Metro Email Sign-up Page

Subscribe to Metro's San Fernando Valley Area Project Updates by scanning the QR code or signing up at:

<https://bit.ly/47YKV9o>





**THANK YOU**