

Welcome!

**Central Los Angeles Area
Projects Update Meeting**
November 18, 2025

Housekeeping

Today's meeting is being recorded.



Attendee cameras are turned off and microphones are muted.



During the meeting, questions and comments can be submitted using the Q&A icon.

Code of Conduct

Metro is committed to ensuring that all participants can fairly and clearly share ideas, comments and concerns about this project. To provide a safe and equitable process, we are asking for your help.

During this meeting, please:

1. Respect the format of the meeting and allow everyone an opportunity to comment
2. Treat fellow community members, agency representatives, Metro staff and others with respect



Facebook Groups: Metro Central



Metro: Central Area Projects

Private group · 80 members



+ Invite

Share

Join the conversation on the Central Area Facebook Group by visiting:
www.facebook.com/groups/metrocentral/.



Central Los Angeles Email Newsletter



M Metro

Metro Central Area Projects Updates



Central LA Construction Projects Updates
Metro will host a virtual community meeting to share the latest updates on two major construction efforts: the Division 20 Portal Widening & Turnback Facility and the Link Union Station projects. Attendees will get a first look at updated timelines, visuals of construction progress, and details on what to expect in the coming months. This is a great opportunity to ask questions and speak directly with Metro staff.

When: Tuesday, May 27, 2025 at 12pm
Please click the link below to join the webinar:
<https://us02web.zoom.us/j/91456407320>
Webinar ID: 914 5640 7320
Phone: 213 338 8477



Subscribe to Metro's Central Area Project Updates
by scanning the QR code or signing up at:
<https://bit.ly/4dB2my1>



Welcome and Agenda

Thank you for joining us!

Metro Agency Updates (Robyn Lopez)

Central LA Construction Project Team (Olga Arroyo)

Link Union Station – Early Work Activities (Raul Preciado)

Division 20 Portal Widening and Turnback Facility Project (Juan Solorio)

Regional Connector (Raul Preciado)



Central Los Angeles Area Team

Our Mission: *To serve the riders and stakeholders in LA County who use our system, or engage with Metro as it plans, builds and operates a world-class transportation system.*



Centralized
communications approach
with the community



Core community relations
team



Serve as a conduit of
community priorities
within Metro



Oversee outreach
programs for Metro
projects in construction

Central Los Angeles Team

Construction Relations and Mitigation Programs

- Olga Arroyo, Community Relations Director
- Juan Solorio, Community Relations Manager
- Raul Preciado Rivera, Principal Community Relations Officer

Strategy & Programming

- Robyn Lopez, Principal Community Relations Officer
- Rene Torres, Community Relations Officer

Local Government Relations Central Region

- Alondra Lopez, Principal Community Relations Officer
 - E-mail: LopezA13@metro.net

Central Los Angeles Area Communities

Downtown LA

Arts District, Bunker Hill, Chinatown, Civic Center, Echo Park, Elysian Park, Fashion District, Financial District, Historic Core, Industrial District, Little Tokyo, Skid Row, South Park

Central LA

Arlington Heights, Hancock Park, Harvard Heights, Koreatown, Larchmont, MacArthur Park, Mid-City, Mid-Wilshire, Pico-Union, Westlake

Eastside

Boyle Heights, El Sereno, Lincoln Heights

Northeast LA

Atwater Village, Cypress Park, Eagle Rock, Elysian Valley, Glassell Park, Highland Park, Montecito Heights, Mt. Washington, Monterey Hills

Hollywood

East Hollywood, Griffith Park, Hollywood, Hollywood Hills, Los Feliz, Silver Lake

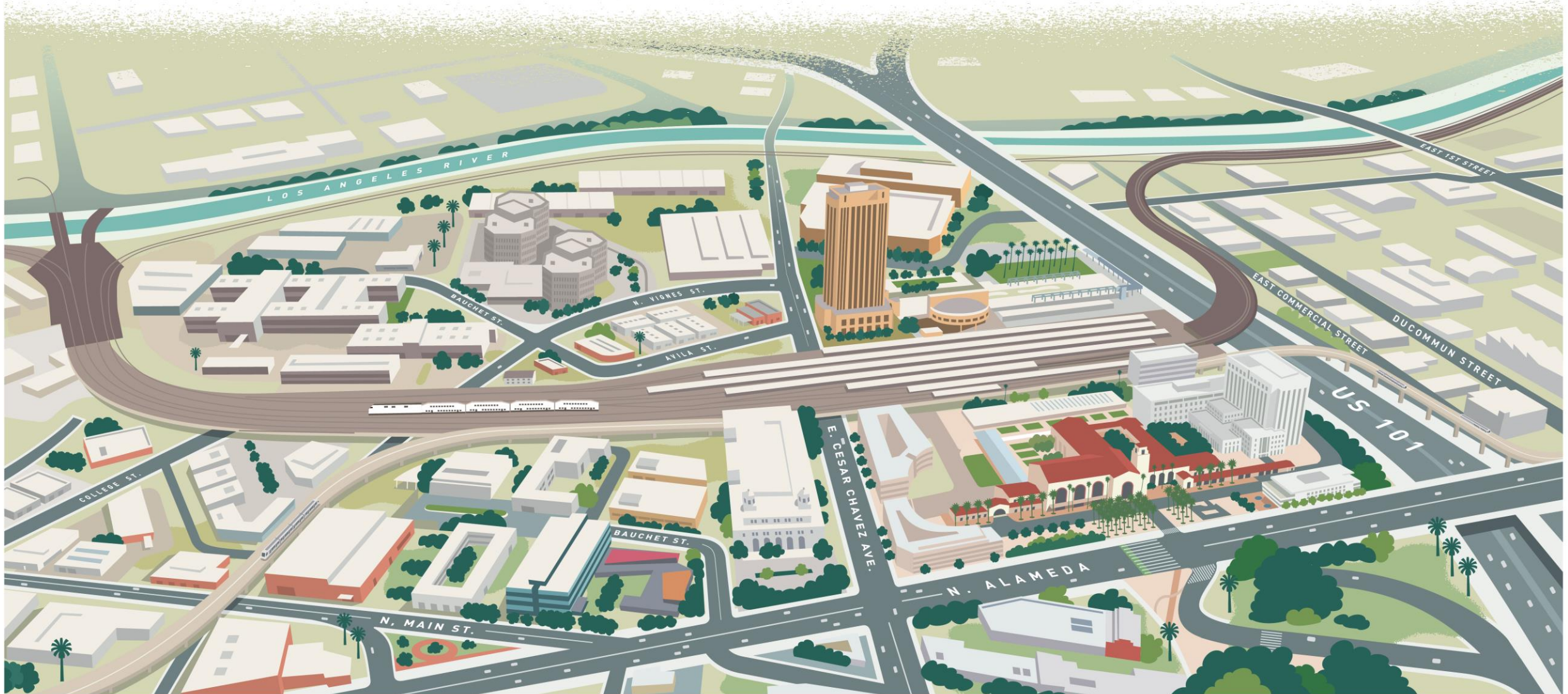
TAP-to-Exit at Union Station

Tap to Exit Is Back!

- TAP-to-Exit resumed on Monday, Nov. 17 at Union Station (B and D Lines) and North Hollywood Station (B Line).
- TAP-to-Exit also launched at Pomona North Station on the A Line on the same day.



Link Union Station



Meet the Metro Team

Environmental Study Phase

Program Management

Carlos Montez

Community Relations

Kim Tachiki-Chin

Design and Construction (Phase A)

Program Management

Scott McConnell

Alice Hsu

Construction Relations

Olga Arroyo

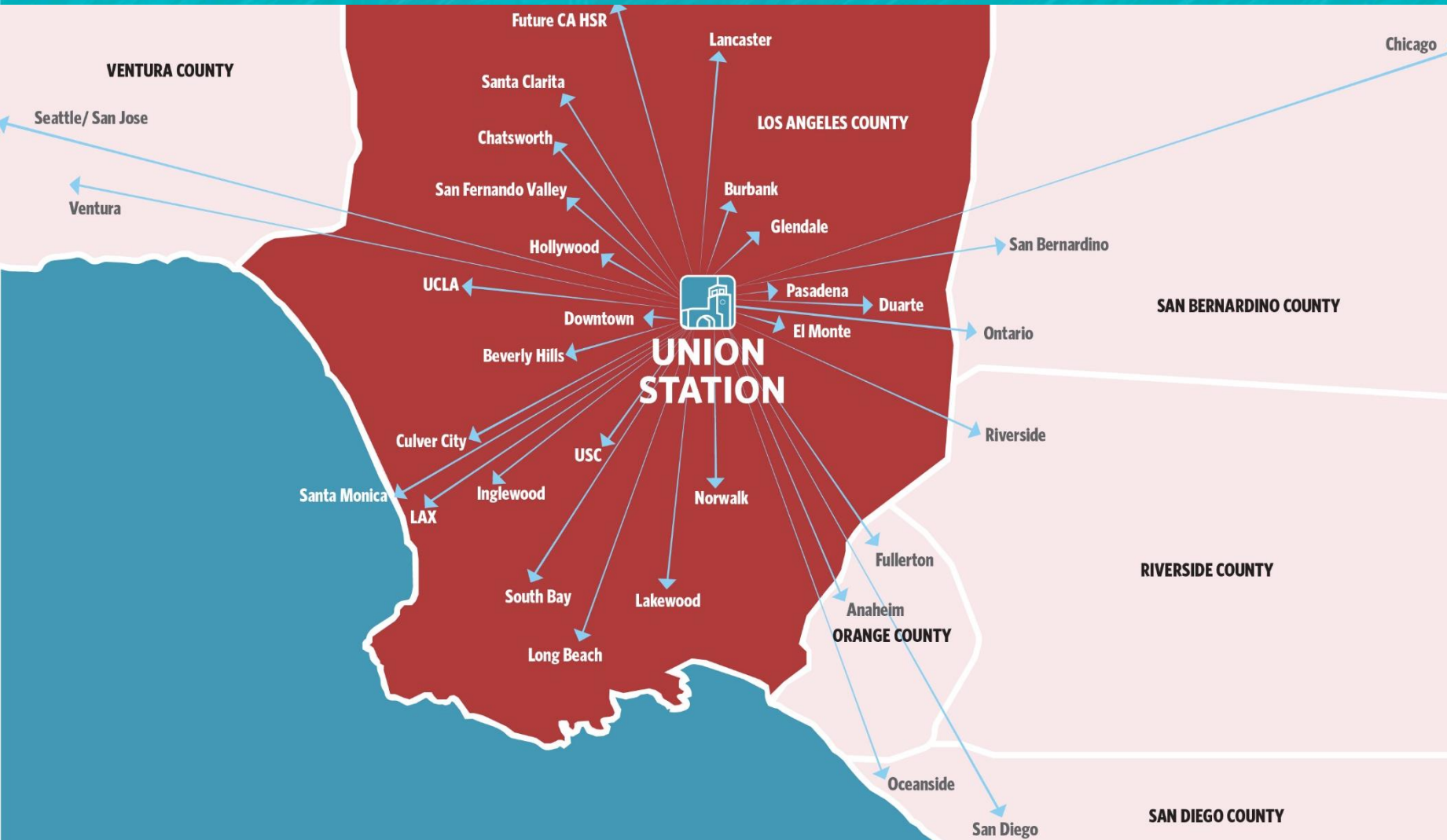
Raul Preciado

Art & Design

Emily Sevier



Union Station and Future Rail Expansion



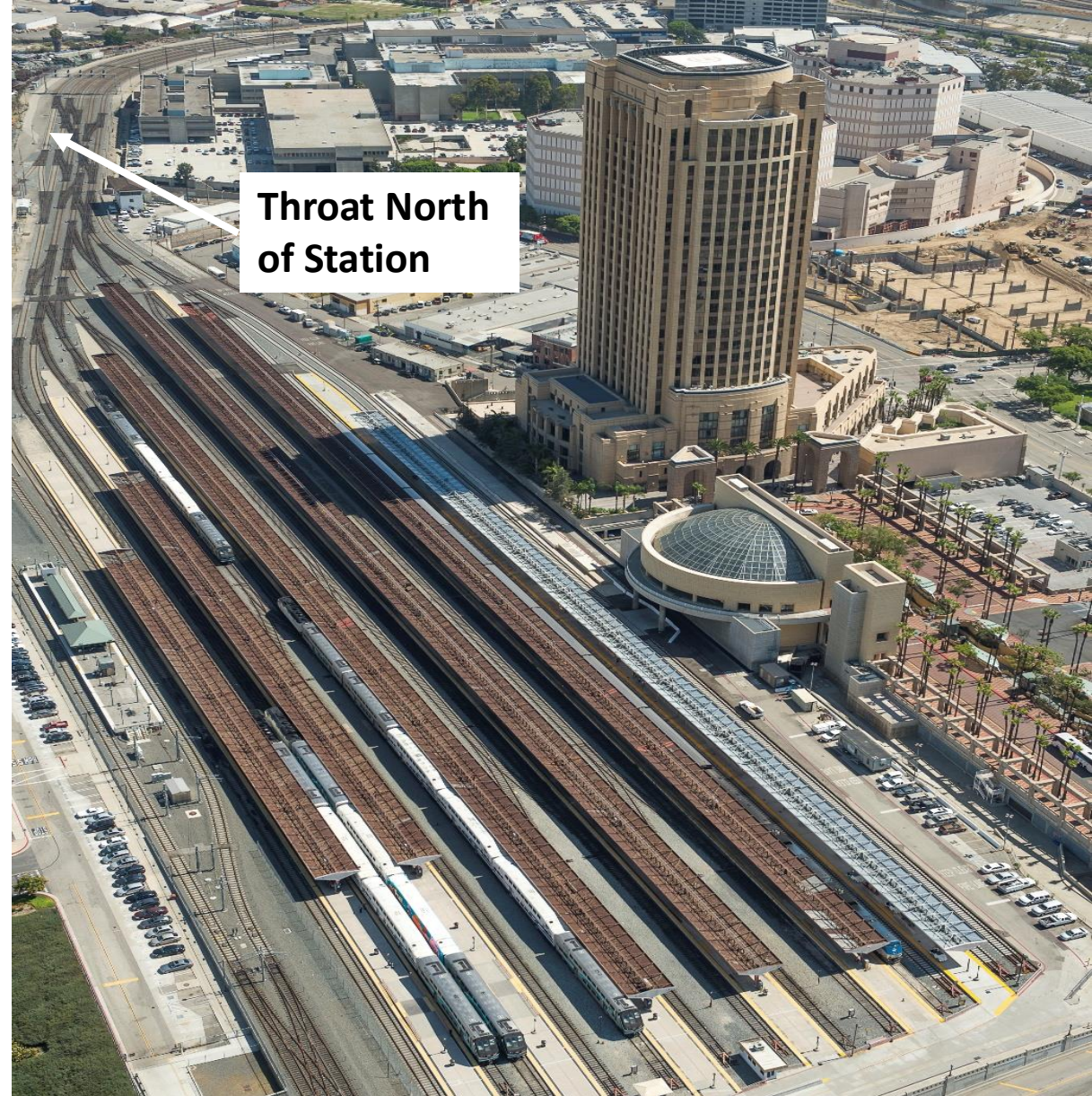
Future Rail Expansion and Increased Rail Service

- > Metrolink
- > LOSSAN
- > Amtrak
- > California High Speed Rail
- > Brightline

Los Angeles Union Station is the largest multi-modal hub in Southern California with commuter and intercity rail services across all six counties in SoCal and Amtrak rail service to Seattle, Chicago, New Orleans and beyond.



Stub-ended tracks



Throat North of Station

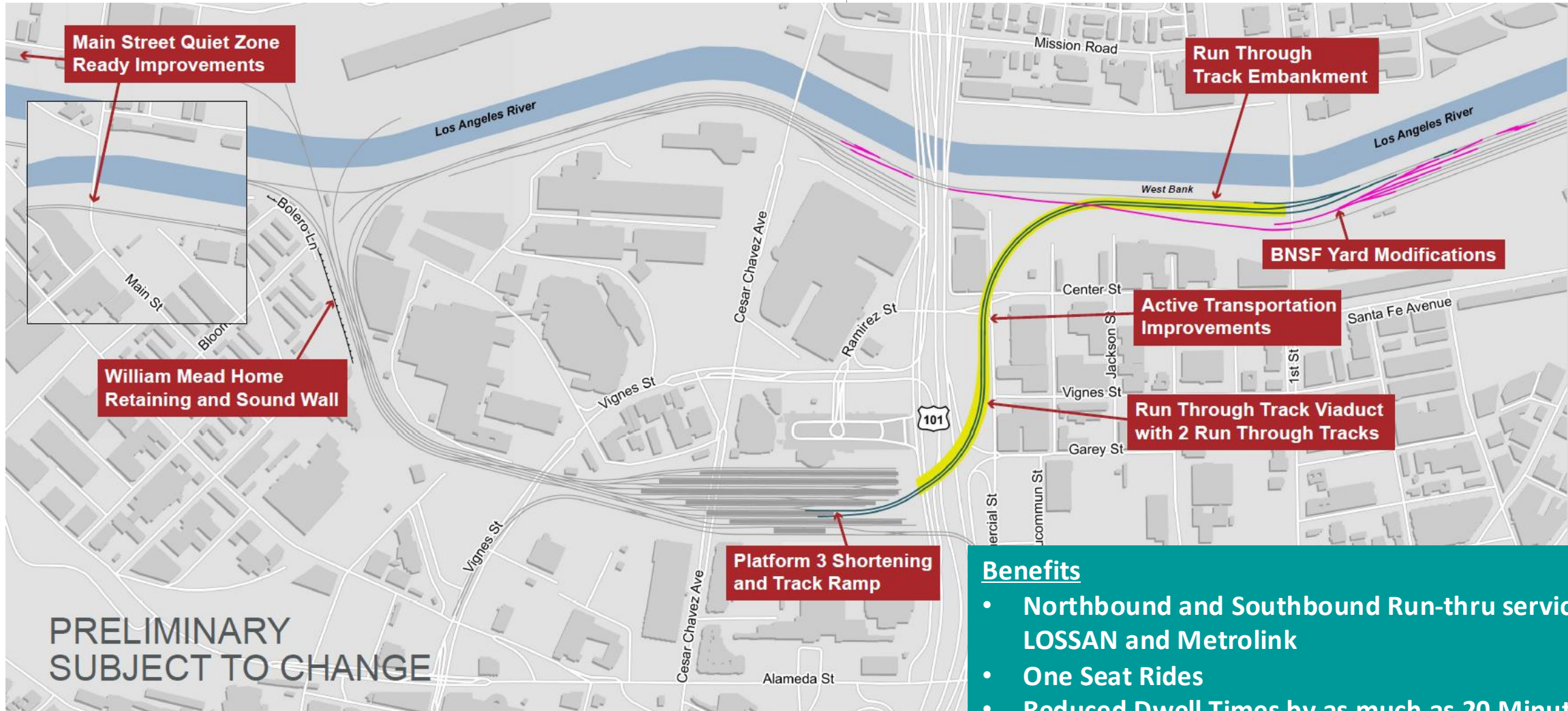
Los Angeles Union Station Today

Built in 1939 | Union Station is a stub end station and has not been modernized since it was built

Link US – Proposed Run-thru Structure



Link US – Phase A



Benefits

- Northbound and Southbound Run-thru service for LOSSAN and Metrolink
- One Seat Rides
- Reduced Dwell Times by as much as 20 Minutes
- Increased Rail Capacity
- Accommodates future California High Speed Rail



Project Updates: Milestones Achieved

April - Construction Manager/General Contractor (CM/GC), FlatironDragados, approved by the Metro Board of Directors

July – CM/GC Notice to Proceed issued

June-October - LifeStorage building demolition, paving, and civil improvements completed

October – Construction Management Support Services (CMSS) contract, T.Y. Lin Inc, approved by the Metro Board of Directors

October - Supplemental EIS approved by Metro Board of Directors



Link Union Station (Link US) FEIR Certified

- > The Metro Board unanimously certified the Link Union Station (Link US) Final Supplemental Environmental Impact Report (Final SEIR) on October 23, 2025 during the Board's General Meeting.
- > The Metro Board also approved a motion committing Metro to continue to work towards resolution of priority outstanding issues with the City of Vernon and the BNSF Railroad.

Building Demolition (Thru 2025)



Before Demolition



After Demolition (Late 2025)

Building Demolition (Before Demolition)



Building Demolition (Before Demolition)



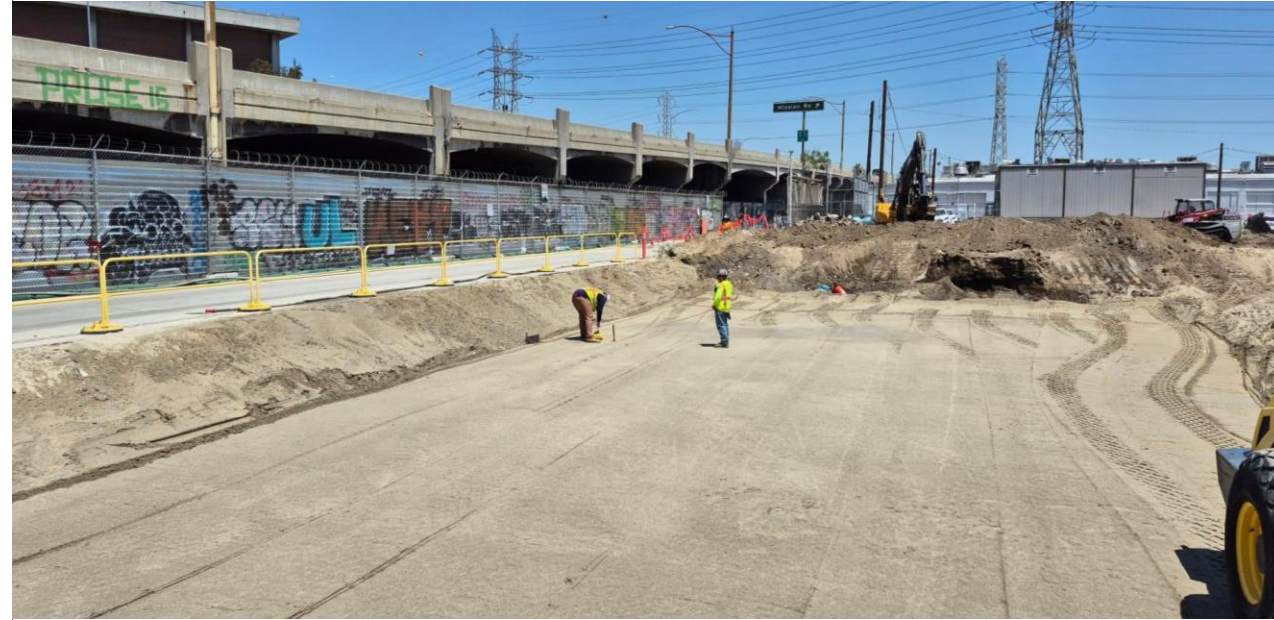
Building Demolition (During Demolition)



Building Demolition (During Demolition)



Building Demolition (During Demolition)



Building Demolition (After Demolition)



Building Demolition (After Demolition)



Tree Removal Application



- In preparation for future construction activities of the bridge over the 101 freeway, the Link Union Station (Link US) Project applied to the City of Los Angeles for a permit to remove 4 trees located at 728 E. Commercial St. Los Angeles, CA 90012.
- These trees will be replaced at a ratio of 2:1 by the Project

City of Los Angeles Tree Removal Process

Metro submitted tree removal permit application to the Streets LA/Urban Forestry Division (UFD). A public hearing on the permit at the Board of Public Works will be schedule at a later time.

Tree removal process (for 3 or more trees) requires 30-day posting period to allow for public comment.

To sign up for Tree removal notification system, visit <http://bsspermits.lacity.org/treepostings/>

Trees will be removed based on construction phasing and pending City of Los Angeles permit approval.



Link Union Station – Look Ahead

2025

November – California High Speed Rail Board,
consider the NEPA Record of Decision

2026


LADWP Power undergrounding, Vista Switch

Metro Board of Directors – Authorize Flatiron
Dragados to perform construction, Early Work
Packages



Link US – Outreach Tools

- > To ensure timely and transparent communication during construction, Metro is using the following outreach strategies:
- > Construction Notices
 - Published on the project website: metro.net/linkus
 - Distributed throughout the area surrounding active construction zones
- > Stakeholder Coordination
 - Ongoing collaboration with adjacent construction projects and property owners
- > Targeted Community Outreach
 - Engagement with local elected officials and community-based organizations in the Arts District and Little Tokyo, including:
 - Business associations
 - Business improvement districts
 - Advocacy groups and civic advisory councils



[Project Webpage](#) | [Active Notices](#)


Link Union Station

Link Union Station (Link US) Phase A | Early Activities

Street Closure and Life Storage Building Demolition

Summary: The Link Union Station (Link US) Project began demolition of the LifeStorage building located at 801 Eat Commercial St. This work will allow for the future construction of the bridge over the U.S. 101 freeway. When completed, the Project will provide new run-through tracks to improve and expand regional rail capacity at Los Angeles Union Station.

Date and Work Hours: Demolition of the building began on Monday January 6, 2025 and will take approximately 6 months to be completed. Work hours are Monday to Friday, 7:00am to 4:00pm, weather permitting. Select activities will require weekend shifts.



Locations: Northeast corner of Commercial St and Center St

Thank You – Stay Informed



213.922.2524



LinkUnionStation@metro.net



www.metro.net/linkus



Next stop: improving rail service.

DIVISION 20 PORTAL WIDENING AND TURNBACK FACILITY

Construction Update



Metro

Meet the Team

Project Management:

- Albert Soliz

Community Relations:

- Raul Preciado
- Juan Solorio

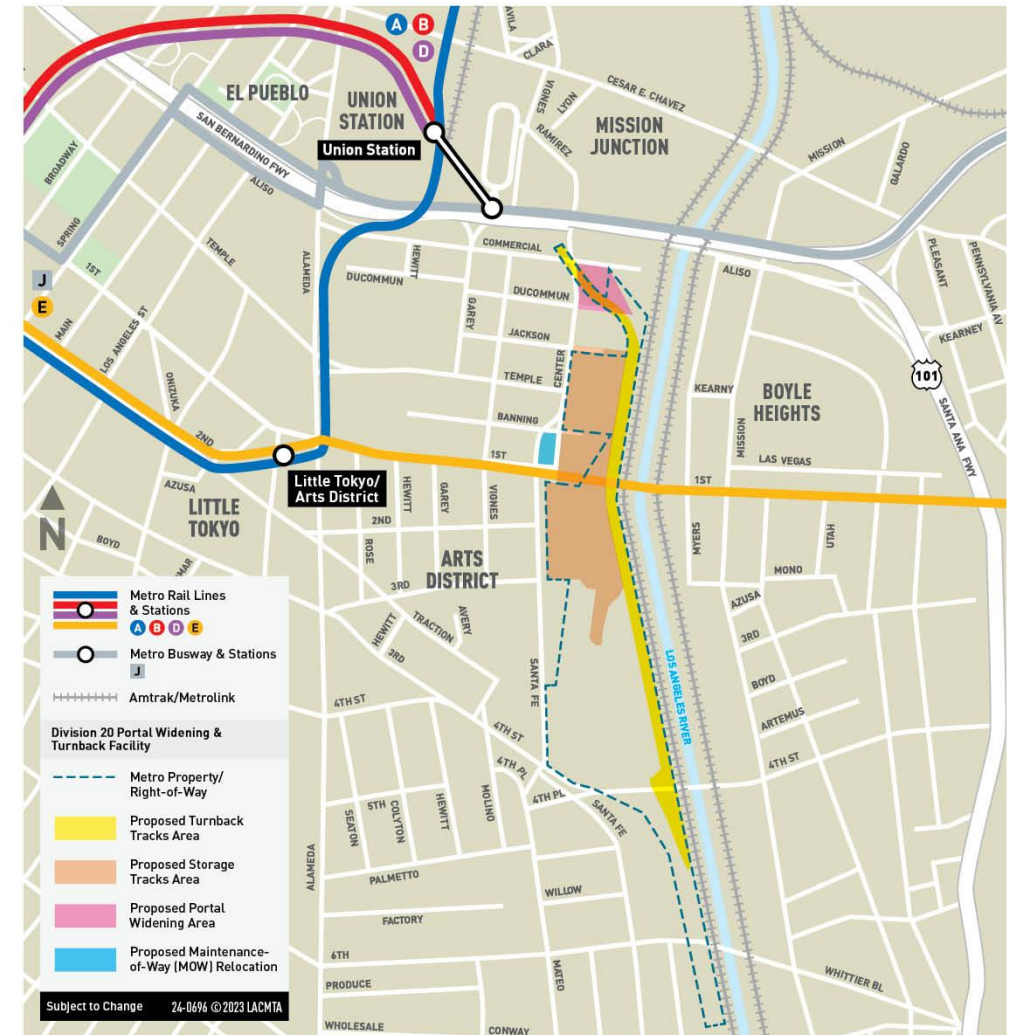
Design-Builder:

- Tutor Perini Corporation

Project Overview

- > Anticipated opening: 2026
- > Improvements to Metro's Division 20 Rail Yard will provide faster and more frequent service on the Metro B and D lines
- > Improvements include
 - Widening of heavy rail portal
 - New turnback facility
 - Expansion, reconfiguration of rail storage tracks

Division 20 Portal Widening & Turnback Facility



Exact location of turnback tracks and storage tracks to be determined.

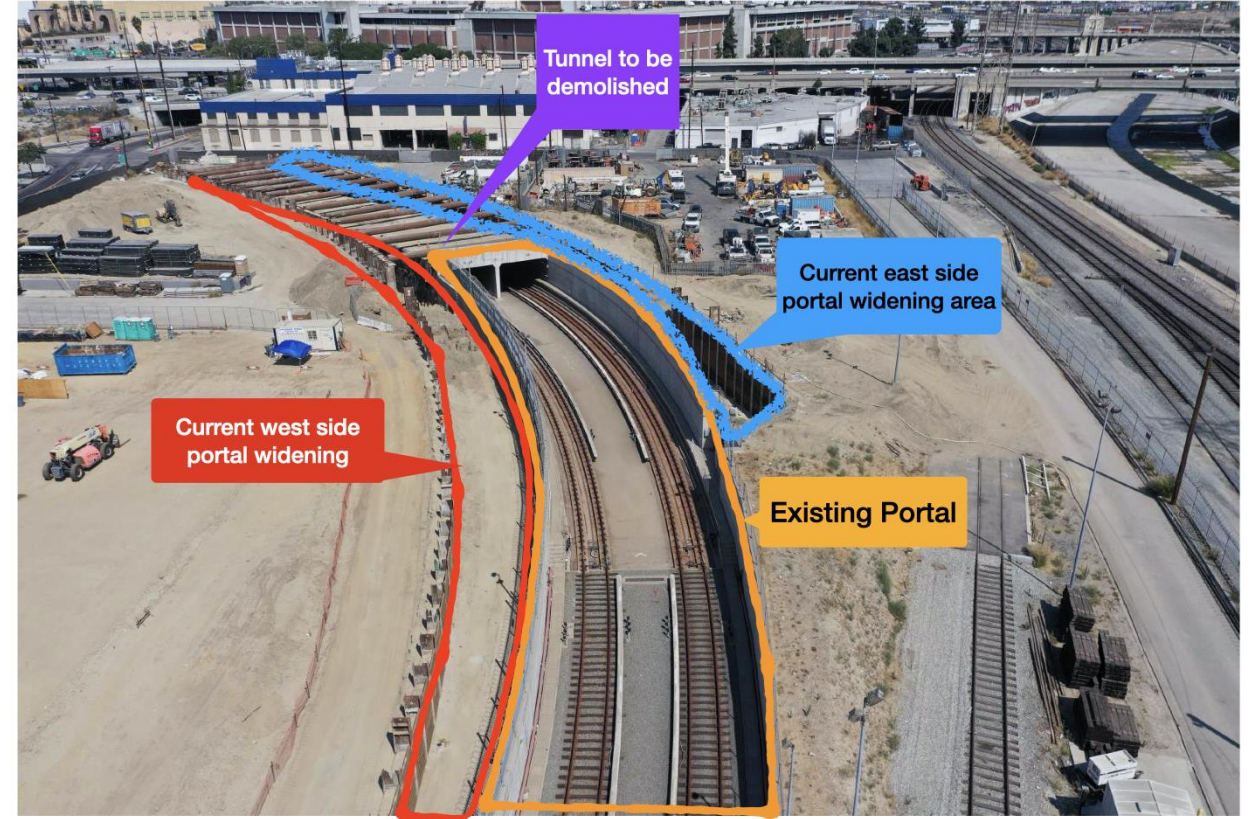


West side Widening Portal Area

Before Construction



During Construction*



*Delineations on the image are not to scale.

Current Work: Portal Area

Portal Widening

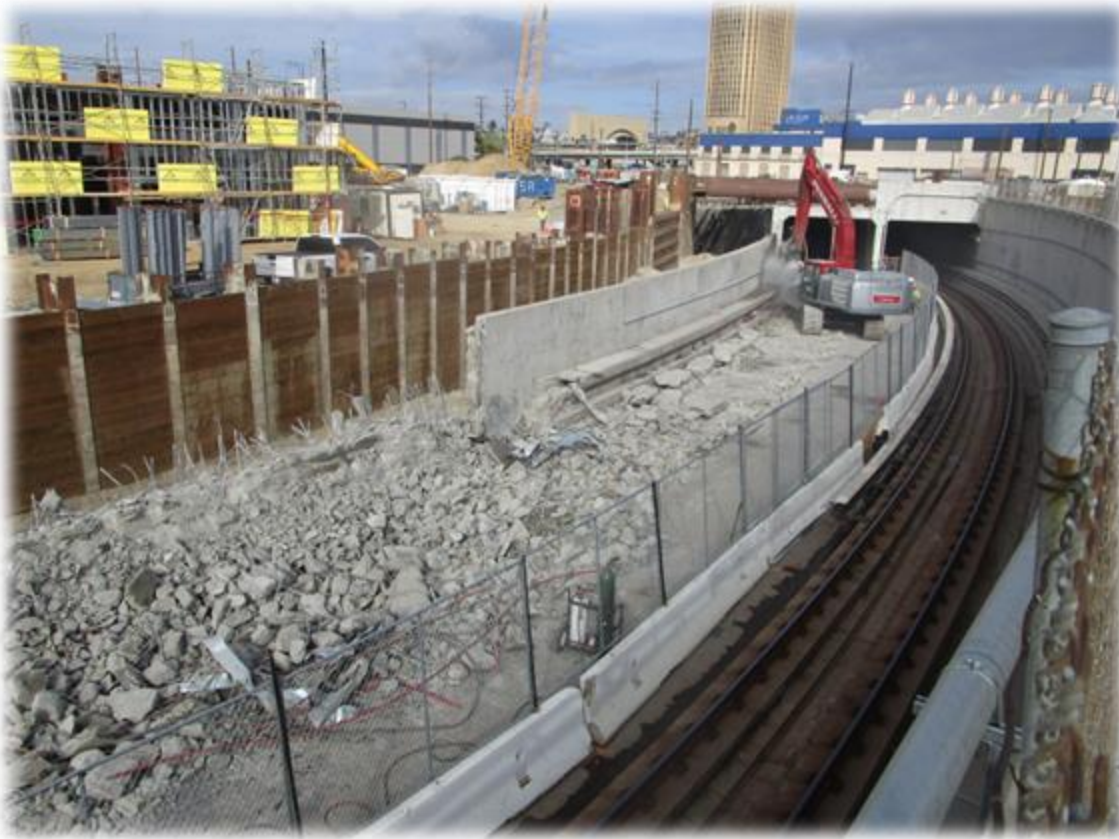
Once the wider portals are complete, the turnaround time for subway cars from the rail yard to Union Station will shrink.

The portal demolition began November 2022. West portal complete, east portal closer to Los Angeles River demo began November 2025.



Part of the West Portal has already been handed off to Metro Rail Operations. Blankets protect workers from flying objects during demolition of the East Portal.

West side Portal Widening



Demolition of West portal – looking Northwest direction



Demolition of West portal – looking in the Northeast direction

West side Portal Widening

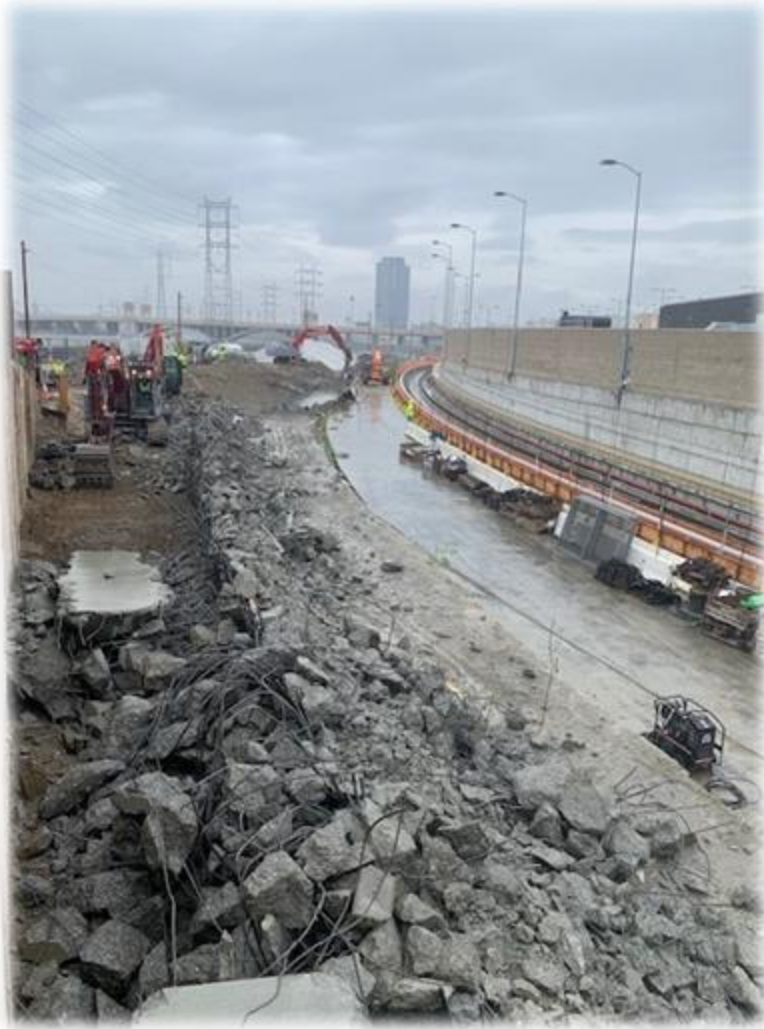


New Westside track & older Eastside portal – looking in Northwest direction.



New Westside track & emergency staircase – looking in Northwest direction.

East side Portal Widening



Demolition of Eastside portal retaining wall – looking in Southwest direction.



Demolition of Eastside portal retaining wall – looking in Southwest direction.

North Yard Progress



North Storage Yard- manholes & duct banks installation.



Current new North yard.

New South Yard Track Progress

Besides bringing more tracks online, workers add and move utilities to support finishing the entire project.

These utilities include:

- Fire water lines
- Lighting duct banks
- Main storm drain

Undergoing system testing such as

- Comms
- Electrical
- Train control



South Yard looking southeast.

Upcoming Work:

**Work is subject to change*

ACTIVITY

New sewer line installation and manhole modifications

DURATION | WORK HOURS | LOCATION

- Scheduled November 21-24 2025, may require a second weekend
- Time: 7pm-6:00am Friday to Sunday,
- Center St between Temple St and Commercial St

ACCESS

- Center St alternating half road closure
- Alternating one way traffic will remain in place with the assistance of flaggers

Construction Mitigations

Noise and Dust Mitigation Best Practices

- **Strategic Equipment Placement**

Position construction equipment and staging areas away from noise-sensitive locations whenever feasible. Incorporate noise barriers when appropriate.

- **Low-Impact Tools and Methods**

- > Limit use of high-impact equipment such as jackhammers and hoe rams
- > Prioritize quieter alternatives like concrete crushers and pavement saws

- **Idle-Free Operations**

Avoid unnecessary idling of construction equipment to reduce emissions and noise

- **Dust Control Measures**

Conduct regular watering of work areas to minimize airborne dust and maintain air quality



Watering truck east of One Santa Fe reduces dust.



Workers monitor noise as excavation in the south yard continues.

Stay Connected



213.922.6934



div20portalwidening@metro.net



metro.net/divison20

Regional Connector: Safety Security & Architectural Enhancements Project



Project Background

- 3 underground stations
 - > Little Tokyo/Arts District
 - > Historic Broadway
 - > Grand Av Arts/Bunker Hill
- Opened to revenue service June 2023
- Requests for enhancements since opening
- Funding secured for “Clean-up” construction contract



Safety Enhancements



Installation of emergency walkway ramps at hazards

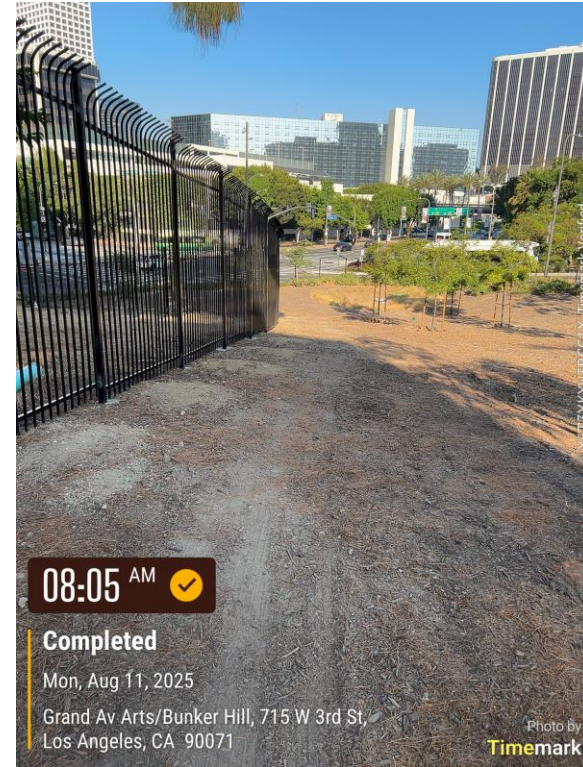


Installation of handrails with LED lighting (Grand Av Arts)

Security Enhancements (Completed)



Installation of additional bollards at station plazas

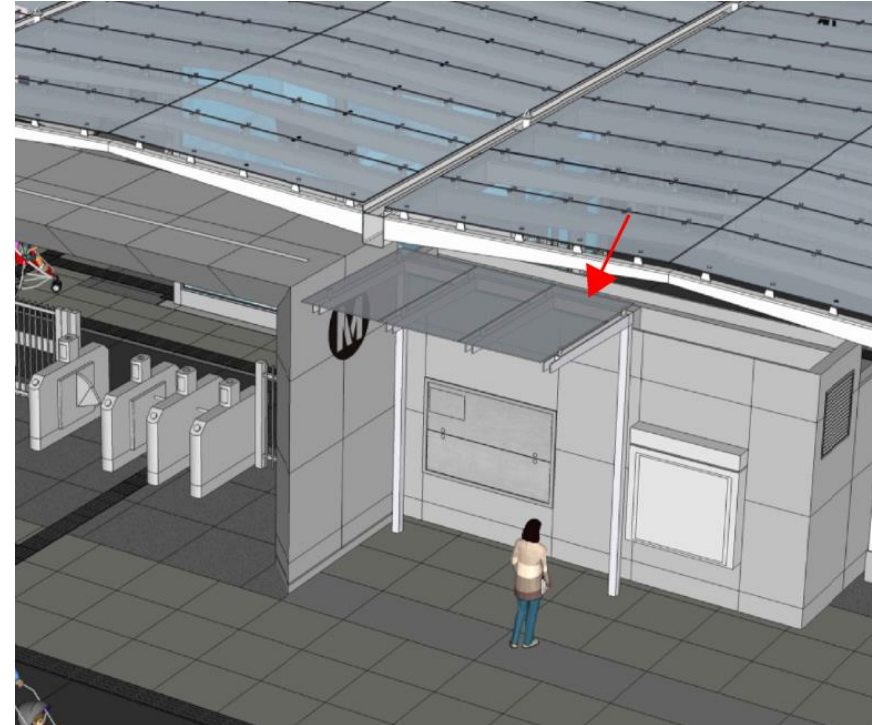


Fence replacement at Grand Av Arts hillside

Architectural Enhancements



Fire sprinkler coverings (Little Tokyo/Arts District)



Supplemental shading canopies (Little Tokyo/Arts District)

Civil Enhancements (Completed)



Push button installation at 5th and Flower streets, south-west corner



Push button relocation between 5th and 4th streets mid-crossing along Flower Street

Look Ahead Schedule

ACTIVITY	DURATION WORK HOURS LOCATION	ACCESS
<p>Station Plaza Enhancements:</p> <p>This includes the installation of bollards on the station's plaza, canopy for ticket vending machine and other station enhancements</p>	<ul style="list-style-type: none">• Scheduled through November 2025• Daytime: 9am-3:30pm, Mon-Fri,• A & E Line Little Tokyo/ Arts District Station & Plaza	<ul style="list-style-type: none">• Station remains open during construction
<p>Utility Adjustment</p>	<ul style="list-style-type: none">• Anticipated to start Winter 2025• Work hours: 9:00pm – 6:00am, Mon-Sun• Will take approximately four to six weeks to complete• On Alameda St at Commercial St	<ul style="list-style-type: none">• Thru access will be maintained during most phases of work.• A directional closure of northbound Alameda St will be needed temporarily.• Traffic will be detoured at Temple St, to Vignes St, to Commercial St, back to Alameda St. Signs will direct motorists.• The work area will be secured with barriers.• Pedestrian access will be maintained outside the area.

Thank You – Stay Informed



regionalconnector@metro.net



www.metro.net/moredtla



Stay in Touch



213-922-1111



centrallaprojects@metro.net



<https://www.facebook.com/groups/metrocentral/>