



We're expanding rail further east.

Community Update Meetings
January/February 2025

EASTSIDE TRANSIT CORRIDOR PHASE 2



Metro

Welcome | Bienvenidos!

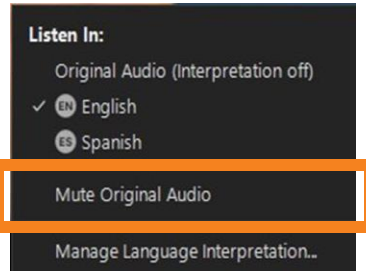
We will begin in a few moments.
Comenzaremos en unos momentos.



Metro

Language Preferences

- > Click on the **“Interpretation”** icon
- > Pick the language you would like to listen to, either English or Spanish
- > To hear the interpreted language only, click **“Mute Original Audio”**



- > Haga clic en el icono de **“Interpretation”**
- > *Escoja la opción para escuchar en inglés o español*
- > *Para escuchar solo español, haga clic en **“Mute Original Audio”***

***Si desea escuchar por teléfono solamente, por favor llame al 408.650.3123
Ingrese el número de acceso: 584-695-565***

Meeting Format



- > Spanish staff is available during the webinar
- > Meeting will be recorded



- > Webcams and mics **will remain off** during the entire webinar

To ask a question:



- > Type your question in the Q&A function
- > Team will be reading and responding to questions during the Q&A session

Code of Conduct

Metro is committed to ensuring that all participants can fairly and clearly share ideas, comments and concerns about this project. To provide a safe and equitable process, we are asking for your help.

During this meeting, please:

- > Respect the format of the meeting
- > Please write your questions clearly in the Q&A function
- > Treat fellow community members, agency representatives, Metro staff and others with respect in the Q&A





Metro's Response to Wildfires: In response to the Eaton and Pacific Palisades wildfires, LA Metro has adjusted the eligibility for reduced fare programs to support the victims.

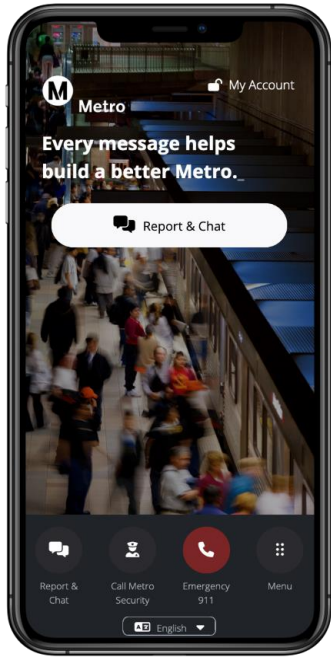
Immediate Benefits: Affected individuals will receive a 90-day free transit pass, preloaded on a TAP card, for unlimited rides on participating transit systems in L.A. County.

Ongoing Support: After 90 days, wildfire victims can get 20 free regional rides each month for six months, with fare-capping options after exceeding certain ride limits.

Enrollment Information: Victims can enroll online or at designated resource centers across Los Angeles. Specific dates and locations are provided for immediate assistance.

Contact for Assistance: <https://www.taptogo.net/wildfireresponse>

Improvements to the Transit Watch App



The new version of the Transit Watch App is out in the world and available for download! Here are some new features and improvements that you will see:

- Streamlined reporting so you can submit an incident report to Metro Security more quickly
- Enhanced real-time location services so you tell us where the issue is occurring
- Improved accessibility enhancements, from 14 different language options to text enlargement

Download the Transit Watch App today and learn more at [***metro.net/transitwatch***](https://metro.net/transitwatch).



My Metro Budget Activity



Metro is excited to announce the annual launch of the My Metro Budget activity.

Answer questions about the future and balance funds between safety, cleanliness, service and more! Your contributions will help develop Metro's Fiscal Year 2026 budget.

Build your budget and the future of LA County's transit system at mybudget.metro.net/online.

Telephone Town Hall



The public is invited to join Metro senior leadership at a Telephone Town Hall event on Feb. 4 at 6PM to discuss the upcoming Fiscal Year 2026 Budget.

There will be opportunities to ask questions live, and to learn more about updates and progress on safety, cleaning, and service.

You can pre-register to be called on the day of the event or submit a written question or comment in advance at

<https://tthm.wufoo.com/forms/metro-telephone-town-hall-signup>

Why Are We Here Today

Agenda	Speakers
Welcome and Introductions	Lorena Sanchez, Metro Community Relations
Project Background	Jill Liu, Metro Planning
Locally Preferred Alternative	
Final Environmental Impact Report (Final EIR) - Key Findings	
Eat Shop Play	Jesse Sanchez, Metro Community Relations
National Environmental Policy Act (NEPA) - Study Process	Jill Liu, Metro Planning Jaime Guzman, AECOM/CDM Smith Joint Venture
Preliminary Station Concepts	Maressa Sah, Metro Planning
Ongoing Community Engagement	Lorena Sanchez, Metro Community Relations
Next Steps	Jill Liu, Metro Planning
Questions & Answers	Edna Jimenez/Edgar Gutierrez, Arellano Associates



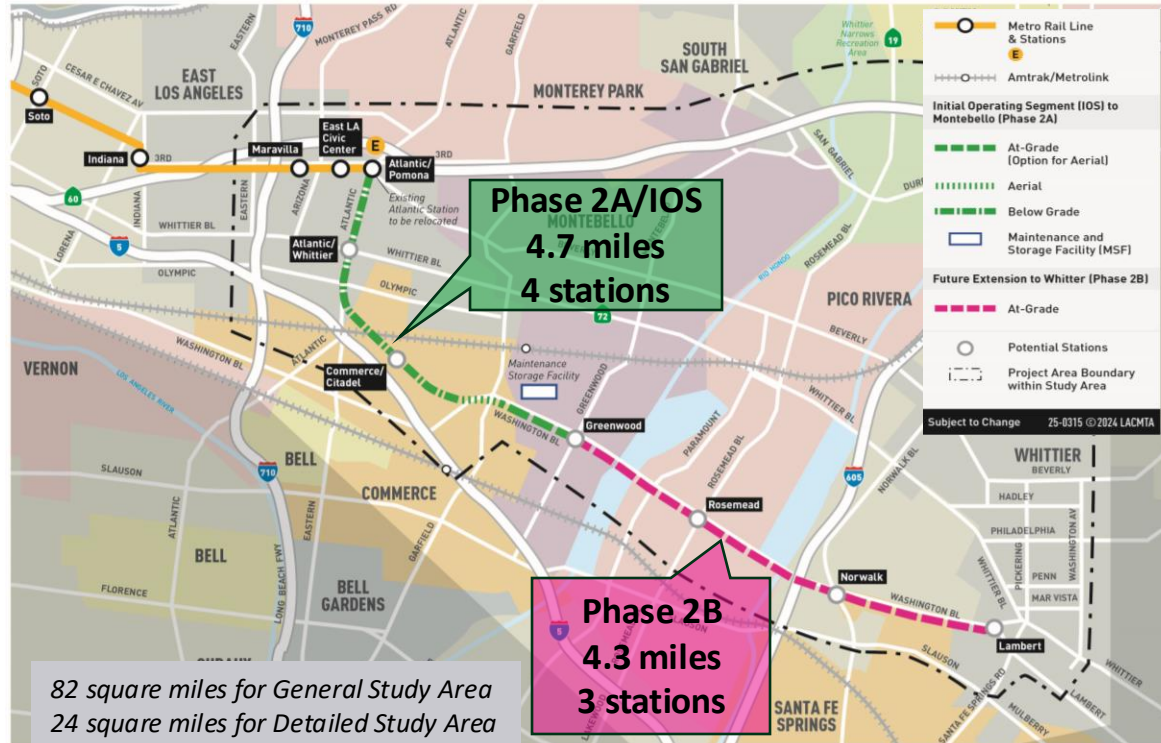
Project Background



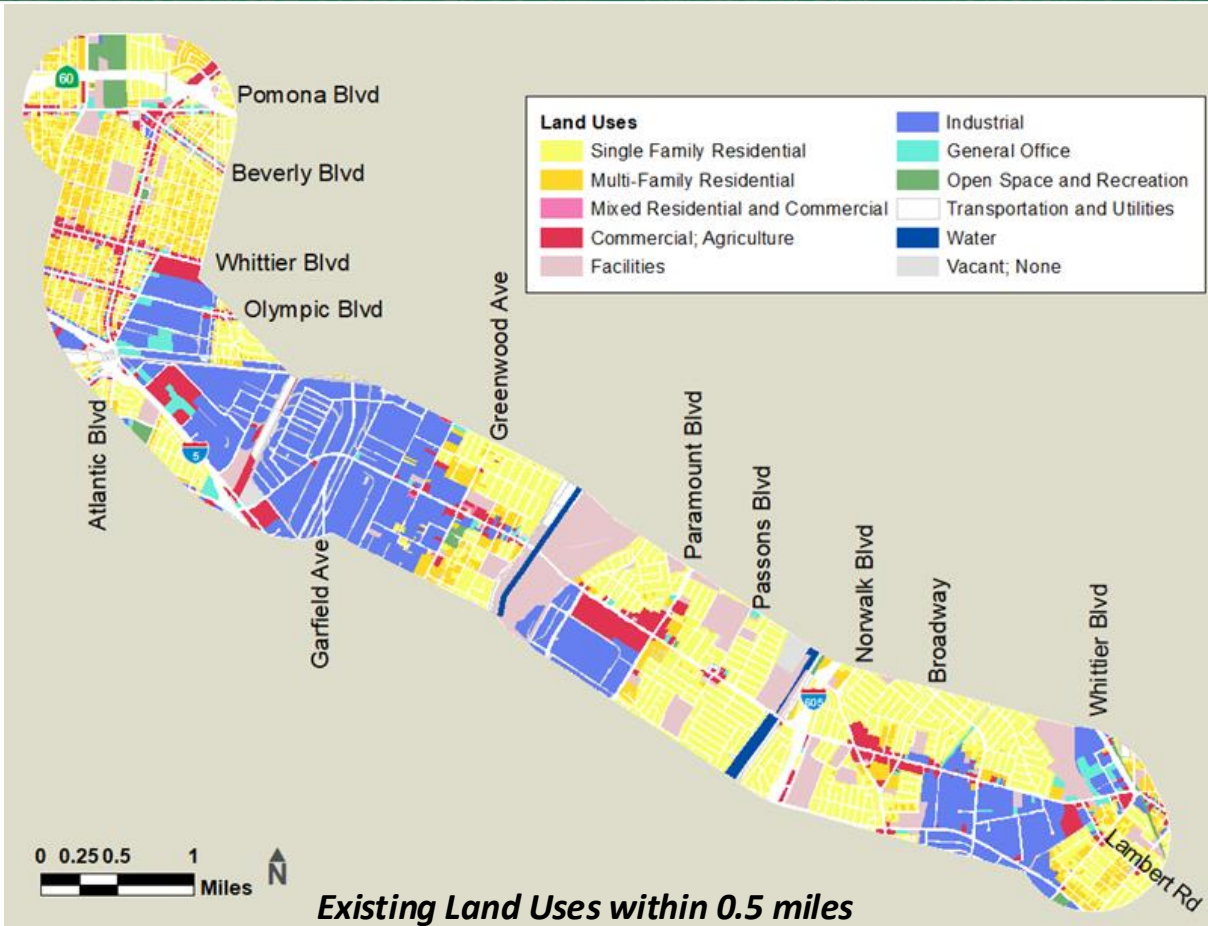
Metro

Eastside Transit Corridor Phase 2 Study Area

- > May 2024 - Metro Board approved the Final Environmental Impact Report (EIR) for a 9-mile extension of the Metro E Line
- > The project will be built in two phases and will connect the communities of East Los Angeles, Commerce, Montebello, Pico Rivera, Santa Fe Springs, West Whittier-Los Nietos and the City of Whittier



Project Purpose and Benefits



- > **Transit-dependent Communities**
Within ½ mile of the stations, 119,759 people
- > **High-travel Demand Corridor**
- > **Ease Traffic Congestion**
Project to serve 15,000 average weekday
- > **Regional Connection**
Connect East Los Angeles and Gateway Cities, with rail services to Downtown Los Angeles, Santa Monica, and key destinations
- > **1,600 new construction jobs** and **\$1 billion of economic activity** per year (estimated)

Project's Environmental Study History

Schedule

WE
ARE
HERE



 **CEQA PROCESS**

 **NEPA PROCESS**

 **NEPA PROCESS**

 **ONGOING PUBLIC PARTICIPATION**

CEQA: California Environmental Quality Act
NEPA: National Environmental Policy Act

IOS: Initial Operating Segment
LPA: Locally Preferred Alternative



Locally Preferred Alternative



Locally Preferred Alternative

Initial Operating Segment (IOS) to Montebello Greenwood Station

> Project Definition

- 4.7-mile IOS from Atlantic to Greenwood
- Approximately 3 miles underground, 1 mile aerial and 0.7 miles at street level

> Stations

- Atlantic/Pomona Station, relocated (open-air underground)
- Atlantic/Whittier Station (underground)
- Commerce Citadel Station (underground)
- Montebello Greenwood Station (at-grade)
- Potential maintenance and storage facility in Montebello

> Cost Estimates

- \$7.9 billion (2022\$ dollars based on 15% early design)

> Funding

- \$3.6 billion in Measure M and Measure R and other local sources; pursuing NEPA and federal funding for LPA

> Construction Schedule (forecasted)

- 2027: Advanced utility adjustments and construction notices
- 2029: Begin construction of stations and guideway
- 2035-37: Construction completion (pending funding availability)



IOS: Initial Operating Segment

LPA: Locally Preferred Alternative

NEPA: National Environmental Policy Act

Final Environmental Impact Report (Final EIR) - Key Findings



Final Environmental Impact Report (EIR)

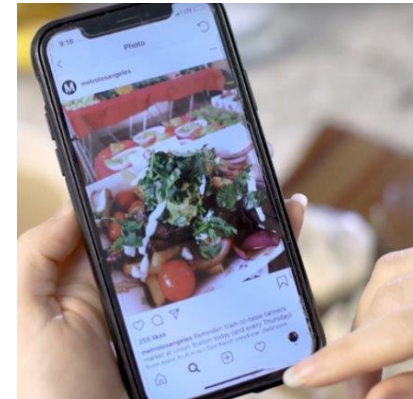
> **Certified by the Metro Board in May 2024**

- Evaluated revisions to Project since the Recirculated Draft EIR in June 2022
- Responded to all public comments received on the Draft EIR
- Project has no residential displacements
- Metro has a Mitigation Monitoring and Reporting Program to reduce or avoid environmental impacts



Eat Shop Play Program

- > Metro's Eat Shop Play program supports local businesses as we build more rail for LA
- > Participation is free
- > Businesses located along Metro Rail construction projects or along specific transit corridors are eligible to sign up for marketing assistance
- > Benefits to local businesses include print/digital ads and email marketing
- > Program contact:
 - Learn more at: [Metro.net/eatshopplay](https://metro.net/eatshopplay)
 - Email: eatshopplay@metro.net



National Environmental Policy Act (NEPA) - Study Process



National Environmental Policy Act (NEPA) Overview

Metro will coordinate with Federal Transit Administration (FTA) to prepare an appropriate NEPA document (e.g., an Environmental Assessment) for the Project as joint Lead Agency with the FTA

> Purpose of the NEPA document

- Seek federal environmental approval to make Project eligible for federal funding
- Assess the Project's potential environmental effects

NEPA Schedule

WE
ARE
HERE

Early 2025

Summer 2025

Fall 2025

Early 2026

January/February project update meetings

Initiate NEPA for federal funding pursuit

FTA to release NEPA document to public and agencies for review (30 days)

Public hearing(s)

Respond to public comments

FTA NEPA decision document*



ONGOING PUBLIC PARTICIPATION

**Note: If NEPA/Environmental Assessment demonstrates that the project will not have a significant effect on the environment, the process concludes with a finding of no significant impact (FONSI).*



FTA: Federal Transit Administration

NEPA: National Environmental Policy Act

NEPA Environmental Study – Topics

Additional Studies in NEPA

- Section 4(f) Evaluation*
- Section 106 (historic properties)
- Environmental Justice**
- Cost Benefit Analysis
- Economics and Fiscal Impacts
- Real Estate and Acquisitions

Notes:

**Park and recreation lands, wildlife and waterfowl refuges, and historic sites*

***Minority populations, low-income populations, and/or Indian tribes and indigenous communities*

****These topics were addressed in Certified EIR, but there are some differences in the specific issues addressed under NEPA.*

EIR: Environmental Impact Report

NEPA: National Environmental Policy Act

Topics included in Certified Final EIR***

- Air Quality
- Climate Change
- Community Impact Analysis, Park/Community Facilities, Utilities
- Construction
- Geotechnical/Subsurface/Seismic
- Ecosystems and Biological Resources
- Energy
- Hazardous Materials
- Historical/Archaeo/Paleo/Tribal Resources
- Land Use and Development
- Noise and Vibration
- Safety and Security
- Transportation and Traffic
- Visual and Aesthetics
- Water Resources
- Growth Inducing
- Cumulative Impacts

Preliminary Station Concepts



Metro

Underground Station Concept



For illustrative purposes only



At-Grade/Street Level Station Concept



For illustrative purposes only



Ongoing Community Engagement



Metro

Ongoing Community Engagement

December 2022–April 2024

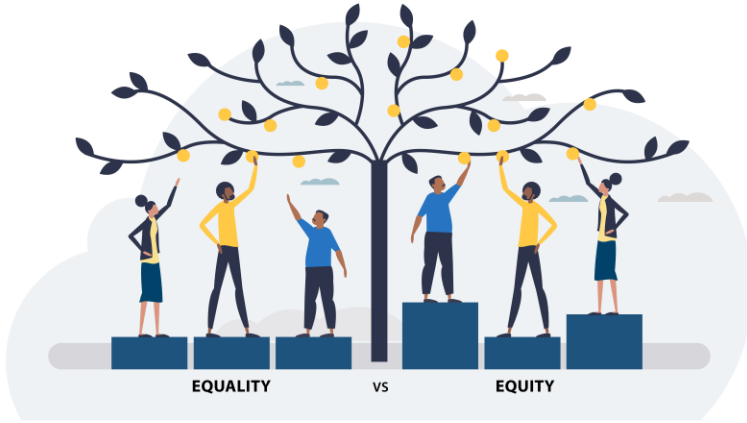
- > 4 rail tours
- > 6 community events and 7 pop-up events
- > 7 first/last mile (FLM) technical walk audits; 6 community walk and wheel audits; 2 community walk audits
- > FLM community survey
- > 75 stakeholder briefings

May 2024–December 2024

- > Over 50 stakeholder briefings, including:
 - Agency briefings
 - Elected briefings
 - Corridor city briefings
 - Phone calls to address public inquiries from property owners or tenants
 - Meetings with utility owners
 - Meetings with railroad companies (BNSF Railway and Union Pacific)

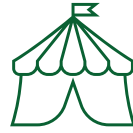


Community Engagement Approach



Equitable Approach

- > Listen and learn
- > Build trust
- > Develop partnerships



Virtual & In-person Outreach

- > The bilingual Spanish-speaking project team engages with local communities in-person and online



CBO Partnerships

- > Partnerships with local community-based organizations ensures wider community reach/engagement



Digital Outreach

- > Website: metro.net/eastsidephase2
- > Email: eastsidephase2@metro.net
- > Informational Line: 213.922.3012

January/February Community Update Meetings

In-Person Meetings

(Completed)

Tuesday, January 28

5:30–7:00pm

East LA Library

4837 E 3rd St

Los Angeles, CA 90022

(Completed)

Wednesday, January 29

6–7:30pm

Commerce Senior Center

2555 Commerce Way

Commerce, CA 90040

(Completed)

Saturday, February 1

10–11:30am

Chet Holifield Park Community
Center

1060 S Greenwood Av

Montebello, CA 90640

Virtual Meeting

Monday, February 3

12–1:00pm

tinyurl.com/ESP2MEETINGS

Call in number: 213.338.8477

Meeting ID: 850-9984-2671

Número de llamada en español: 408.650.3123

Código de acceso: 584-695-565

Note:

- ✓ *The same information will be presented at each meeting.*
- ✓ *Free onsite parking and Spanish interpreters will be available*
- ✓ *ADA accommodation and translations are available by calling 213.922.3012 and requesting services at least 72 hours in advance.*
- ✓ *In-person meetings will offer a Kids' Corner with fun activities.*



Next Steps

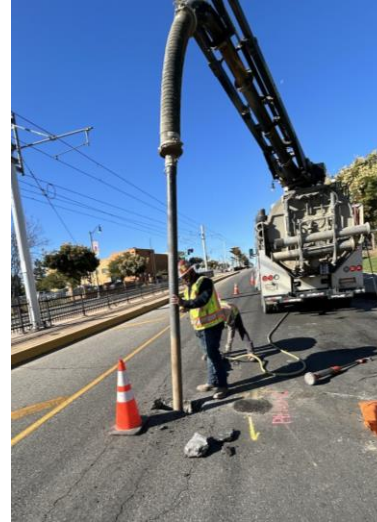


Metro

Pre-Construction Surveys

Metro is currently advancing engineering work through pre-construction surveys:

- > **Utility Potholing:** excavating small test holes in the ground to locate underground utilities such as pipes, cables, and gas lines
 - Studies in East Los Angeles, Montebello, and Commerce began in September 2024 and will continue in early 2025
- > **Soil Sampling:** temporary wells to analyze soil and groundwater conditions
 - Studies completed along project alignment in Pico Rivera, Whittier and Santa Fe Springs in 2024
 - Studies in East Los Angeles, Montebello, and Commerce will commence in spring 2025



Utility Potholing



Soil Sampling

Next Steps

- > Continue coordinating with FTA on NEPA document for the LPA and state and federal funding pursuits
- > Continue to engage communities and project key stakeholders
- > Continue project engineering design for LPA
- > Continue soil sampling and utility potholing activities
- > Continue First/last mile planning efforts with five corridor cities
- > Ongoing coordination with corridor cities, utility owners, and railroad companies on design review and cooperative agreements

FTA: *Federal Transit Administration*

LPA: *Locally Preferred Alternative*

NEPA: *National Environmental Policy Act*



Gateway Cities

Subscribe to Metro's Gateway Cities Area Project Updates by scanning the QR code or signing up at <https://bit.ly/3ZT70V5>



Questions & Answers



Question & Answer Session



To ask a question:

> Type your question in the Q&A function

You can also provide your questions via the project tools:



eastsidephase2@metro.net



metro.net/eastsidephase2



213.922.3012

Contact Us



Jill Liu, Project Manager, Countywide Planning & Development
Lorena Sanchez, Manager, Community Relations, Gateway Cities
Metro
One Gateway Plaza, MS 99-22-7
Los Angeles, CA 90012



eastsidephase2@metro.net



metro.net/eastsidephase2



213.922.3012

