



Next stop: exploring alternatives to the 405.

SEPULVEDA TRANSIT CORRIDOR PROJECT

**Draft Environmental Impact Report
Information Sessions
June/July 2025**



Metro

Interpretation Available

Via Zoom

- > Click on the “Interpretation” icon
 - > Pick the language you would like to listen to (Spanish)
 - > Spanish translated presentation has been posted in the chat
-

Interpretación en español

Via Zoom

- > *Haga clic en el icono “interpretación”*
- > *Escoja la opción para escuchar en español*
- > *El enlace a la presentación en español está disponible en el “chat”*



LIFE Program

Ready to go more places with Metro?

Qualifying LA County residents can enjoy 20 free rides every month on Metro or a discounted pass on another participating transit agency. Sign up now and get unlimited free rides for the first 90 days! Visit www.metro.net/life for more information.



AS AN IMMIGRANT, YOU HAVE RIGHTS!

Get support, legal services and protections.

COMO INMIGRANTE, ¡USTED TIENE DERECHOS!

Obtenga apoyo, servicios legales y protecciones.

320 W. Temple St.
Room G10
Los Angeles, CA
90012

800-593-8222

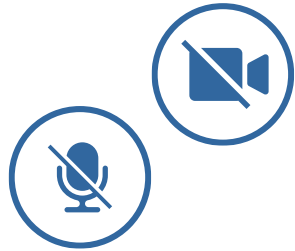
oia.lacounty.gov



Know Your Rights as an Immigrant

- All immigrants, regardless of status, are entitled to basic rights and protections under the law. Understanding these rights is the first step toward safety, empowerment, and accessing essential resources.
- Key Support Services Available:
 - Free or low-cost legal services
 - Language-accessible assistance
 - Resources for navigating immigration issues
 - Protection from fraud, discrimination, and abuse
- oia.lacounty.gov

Today's meeting is being recorded.

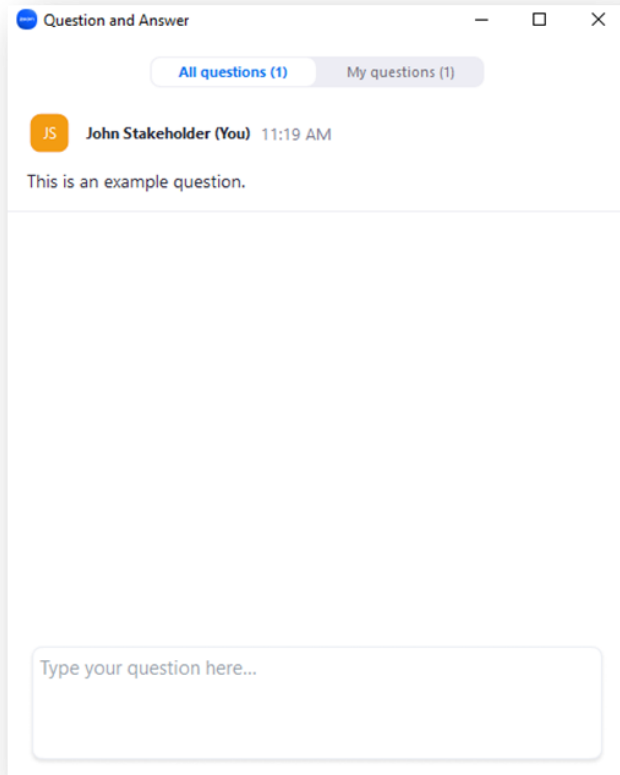


Attendee cameras are off, and microphones are muted.

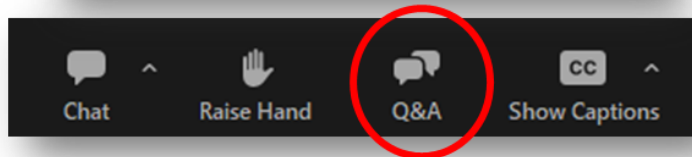


For technical support, call or text 323.917.0991

How to Submit Questions



- > We look forward to hearing from you
- > You're welcome to submit questions for the Metro team using the Q&A function in Zoom
- > We'll answer as many questions as we can in the time available, focusing on questions of broadest interest
- > All questions (including those we can't get to today) will be shared with the project team as a comment and responded to in the Final EIR



Where do you live?

1. San Fernando Valley
2. Westside
3. Central LA/Downtown
4. South Los Angeles/Gateway Cities
5. San Gabriel Valley
6. South Bay
7. Santa Clarita/Palmdale
8. Outside of Los Angeles County

Have you participated in the project previously (attended a meeting/submitted a comment)?

1. Attended a prior meeting or submitted a comment
2. Did not participate

Today's Speakers



Nick Fox Robbins
Community Relations



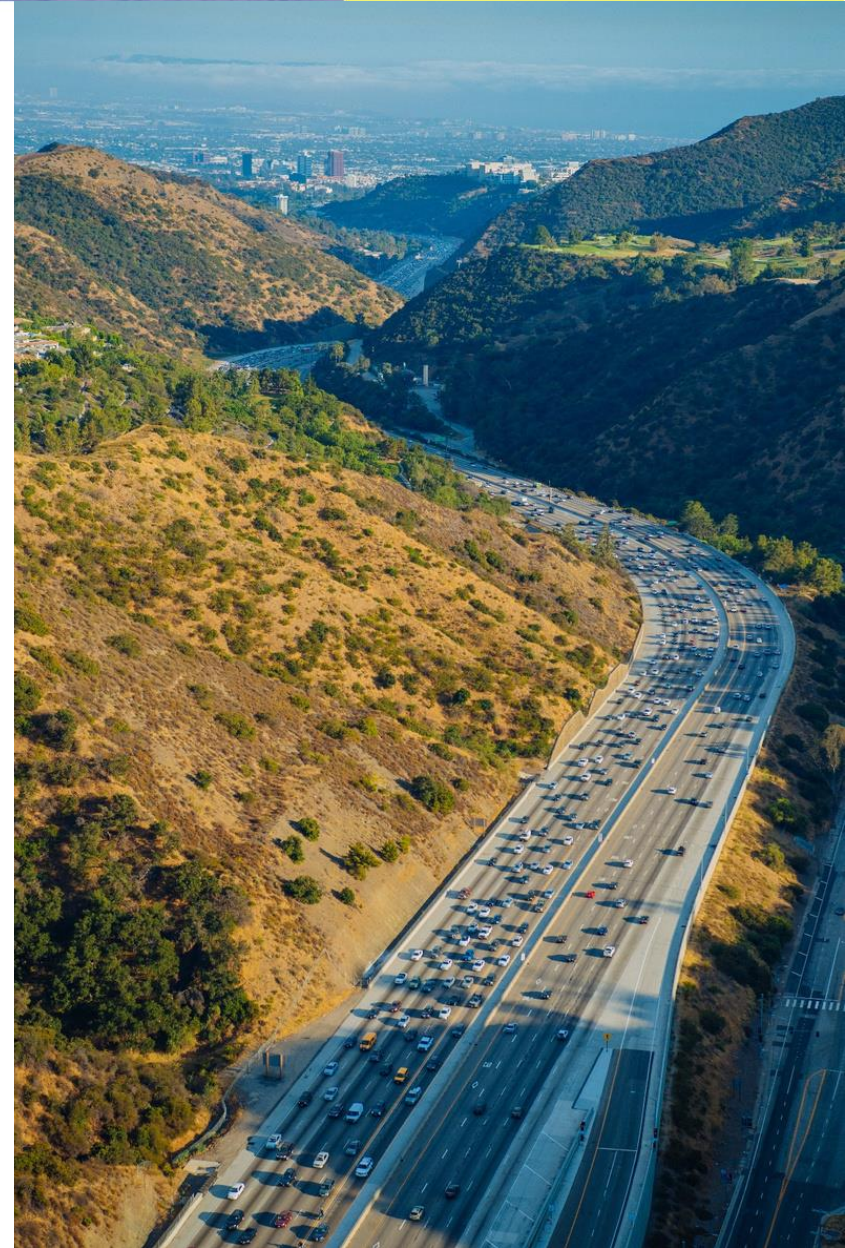
Anthony Crump
Community Relations



Cecily Way
*Countywide Planning
& Development*

Agenda

- > Project Overview
- > Overview of Draft EIR and Environmental Process
- > CEQA Impacts
- > Other Draft EIR Findings and Considerations
- > How to Provide Comment
- > Next Steps
- > Overview of Project Resources
- > Q&A



What We've Shared & Today's Meeting

Information Previously Shared

- > Project alternatives
- > Station locations
- > Travel times (end-to-end & to key destinations)
- > Boardings (forecast boardings & boarding by alternative)
- > Decision process for elimination of Alt 2
- > Station, train and maintenance & storage facility (MSF) renderings (on Project Hub)
- > Public-Private Partnership (P3) Project Delivery Approach
- > Preliminary Project Benefits, Costs, Schedule and Delivery Considerations

Information Being Presented

- > Project Overview
- > Overview of Draft EIR
- > Draft EIR Findings
- > How to Comment

Information Available in Meeting Room & Online

- > Project Benefits
- > Preliminary Project Costs, Schedule and Delivery Considerations
- > Interactive Map
- > Information about Stations and Construction

Project Overview

Why this Project?



- > **Severe traffic congestion** on I-405 especially during peak periods.
- > Limited options for **Valley-Westside** travel.
- > A typical San Fernando Valley commuter loses **59 hours per year to traffic delays** just during the evening commute home on I-405 between Wilshire Bl and Ventura Bl*
- > **Over 400,000 weekday trips** through the Sepulveda Pass.
- > **Less than 2%** of trips in the Sepulveda Pass are made by transit.
- > Number of trips generated within the Study Area forecasted to grow by approximately 17% by 2042 and **24% by 2057.**

**According to the INRIX 2024 Global Traffic Scorecard*

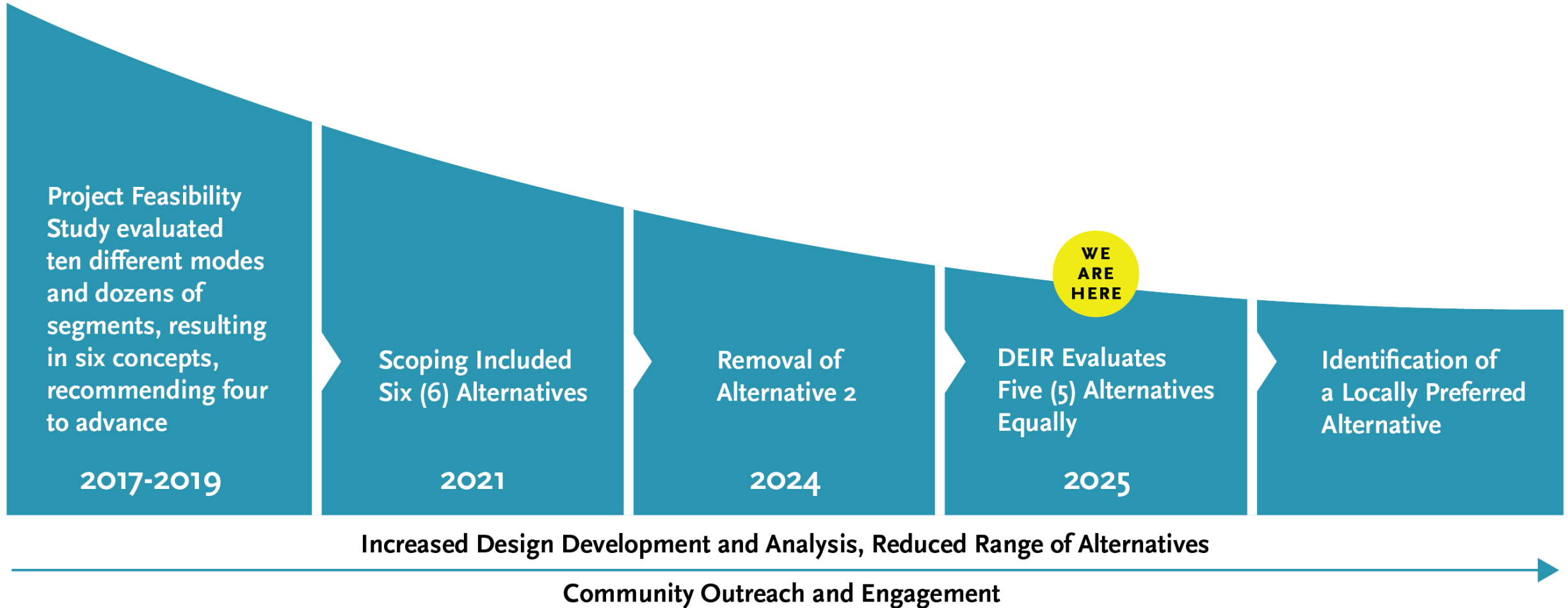
Sepulveda Transit Corridor Project



New, fast, reliable, safe rail transit service connecting San Fernando Valley & Westside

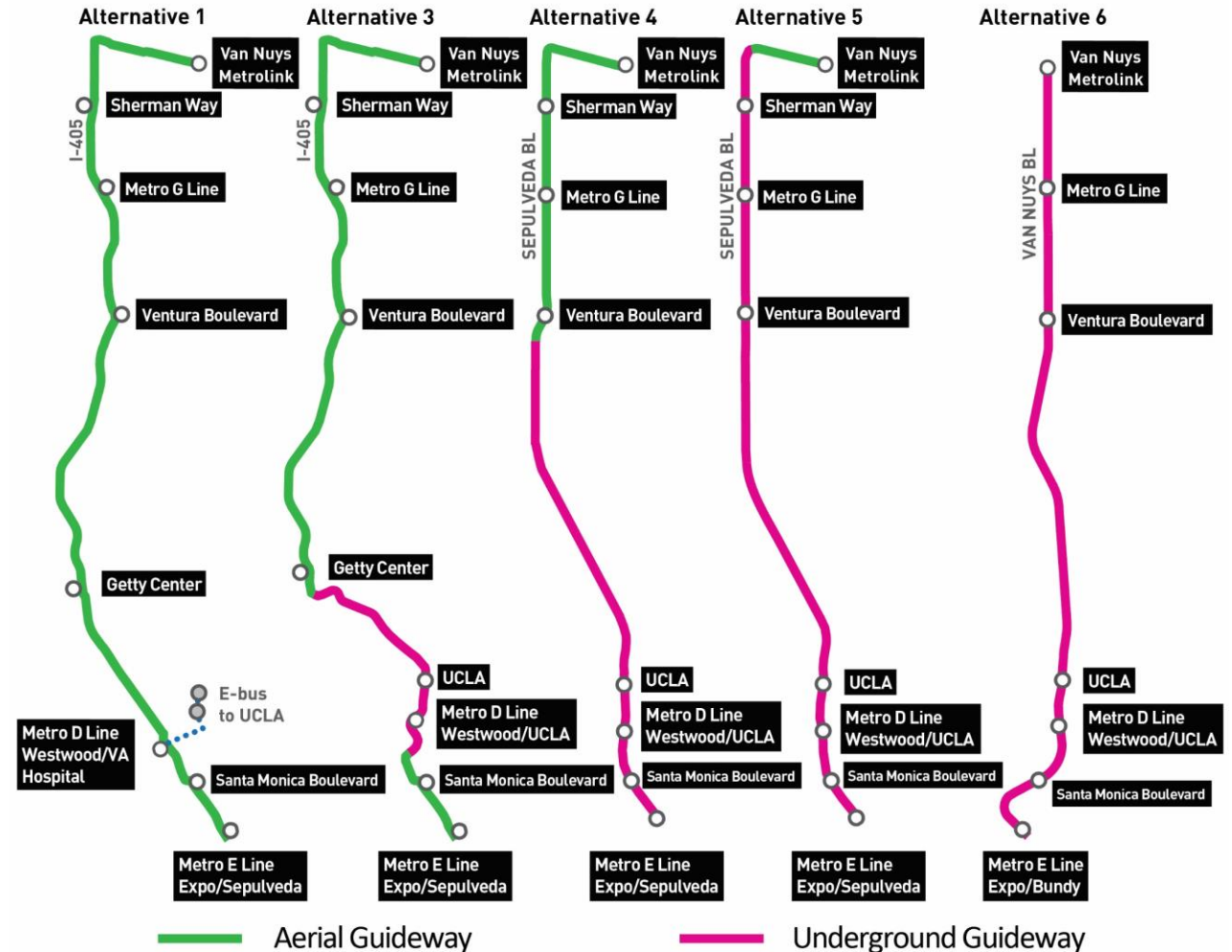
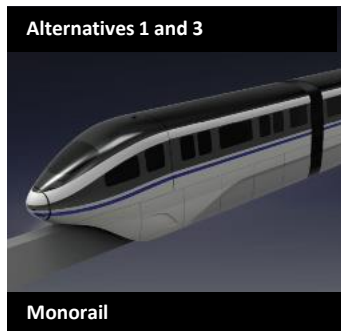
- > Northern terminus station at Van Nuys Metrolink/Amtrak Station
- > Southern terminus station at Metro E Line (Expo)
- > Maintenance & Storage Facility (MSF)
- > Connections to Metro's high-capacity transit lines:
 - East San Fernando Valley Light Rail Transit
 - Metro G Line (Orange)
 - Metro D Line (Purple)
 - Metro E Line (Expo)

Evolution of Alternatives



Overview of Alternatives

- > All alternatives connect Van Nuys Metrolink Station in San Fernando Valley to Metro E Line on Westside
- > Alternatives 1, 3, 4, and 5 have southern terminus station at Expo/Sepulveda; Alternative 6 has southern terminus station at Expo/Bundy
- > The alternatives include different stations and station locations



Comparison of Alternatives



	Alt 1 *	Alt 3	Alt 4	Alt 5	Alt 6
Technology	Automated Monorail	Automated Monorail	Automated Heavy Rail	Automated Heavy Rail	Driver-Operated Heavy Rail
Alignment	Aerial	Aerial/Underground	Aerial (n. of Valley Vista)/Underground	Aerial (n. of Raymer)/Underground	Underground
Length (miles)	15.1	16.1	13.9	13.8	12.9
Stations	8	9	8	8	7
End-to-end travel time (mins.)	~28	~33	~20	~20	~18
Peak train frequency (mins.)	2.77	2.77	2.5	2.5	4
Daily Ridership	~63,000	~82,000	~123,000	~124,000	~107,000
Connection to UCLA	Electric Bus	Station under campus	Station under campus	Station under campus	Station under campus

*Alternative 1 also includes an E-bus between the Metro D Line Westwood/VA Hospital Station and UCLA Gateway Plaza.

Project Benefits: A Fast & Reliable Alternative

Getting from Van Nuys Metrolink Station to Metro E Line

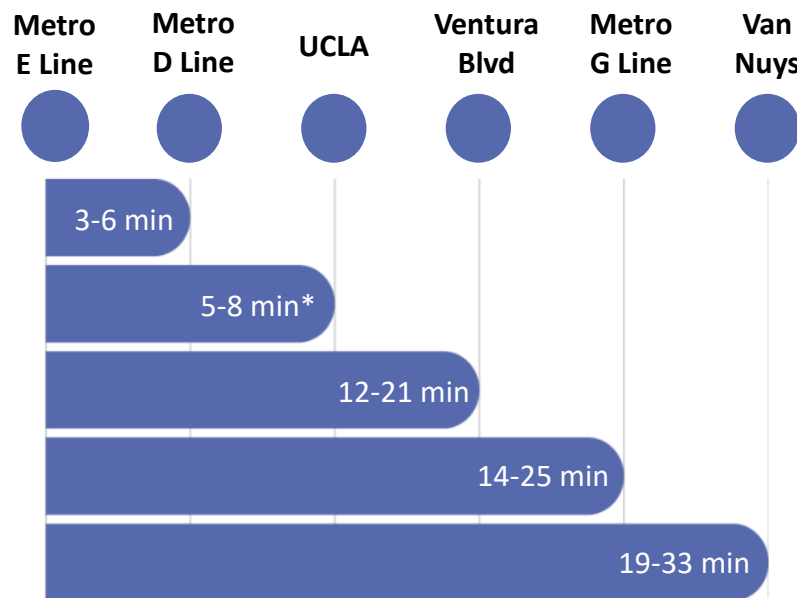
By Car
40-80 minutes
 Unreliable due to traffic

By Rail
18-33 minutes
 Predictable

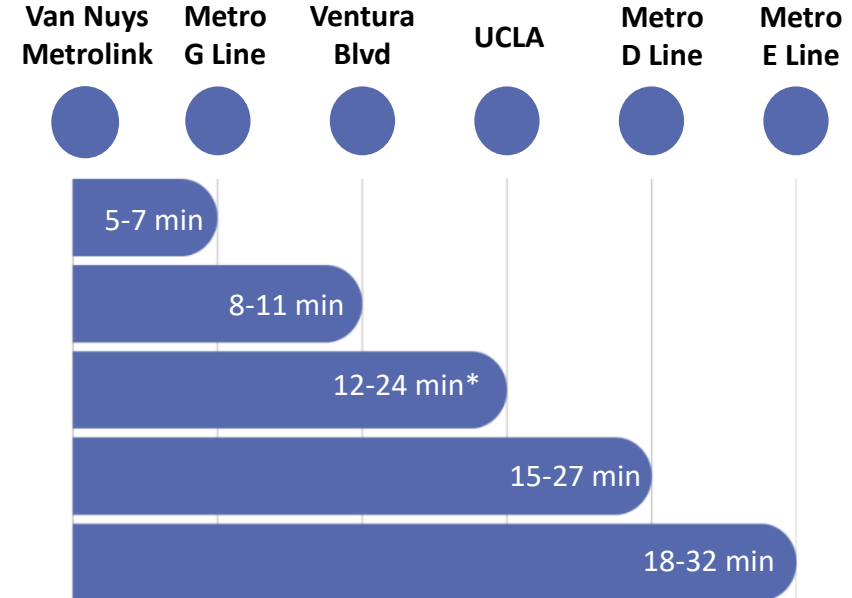
Cuts travel time in half for some trips

RAIL TRAVEL TIMES

Metro E Line to...



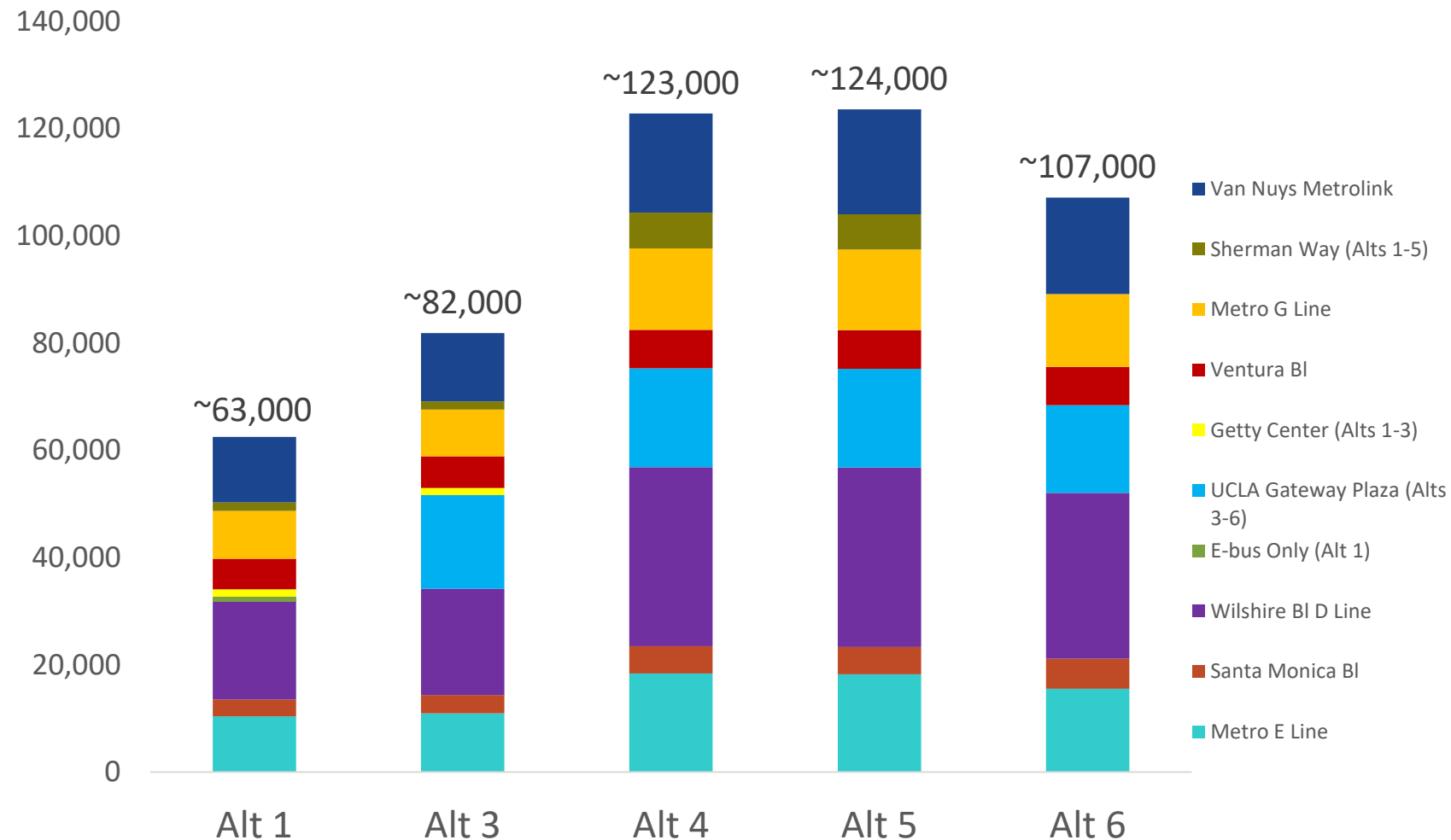
Van Nuys Metrolink to...



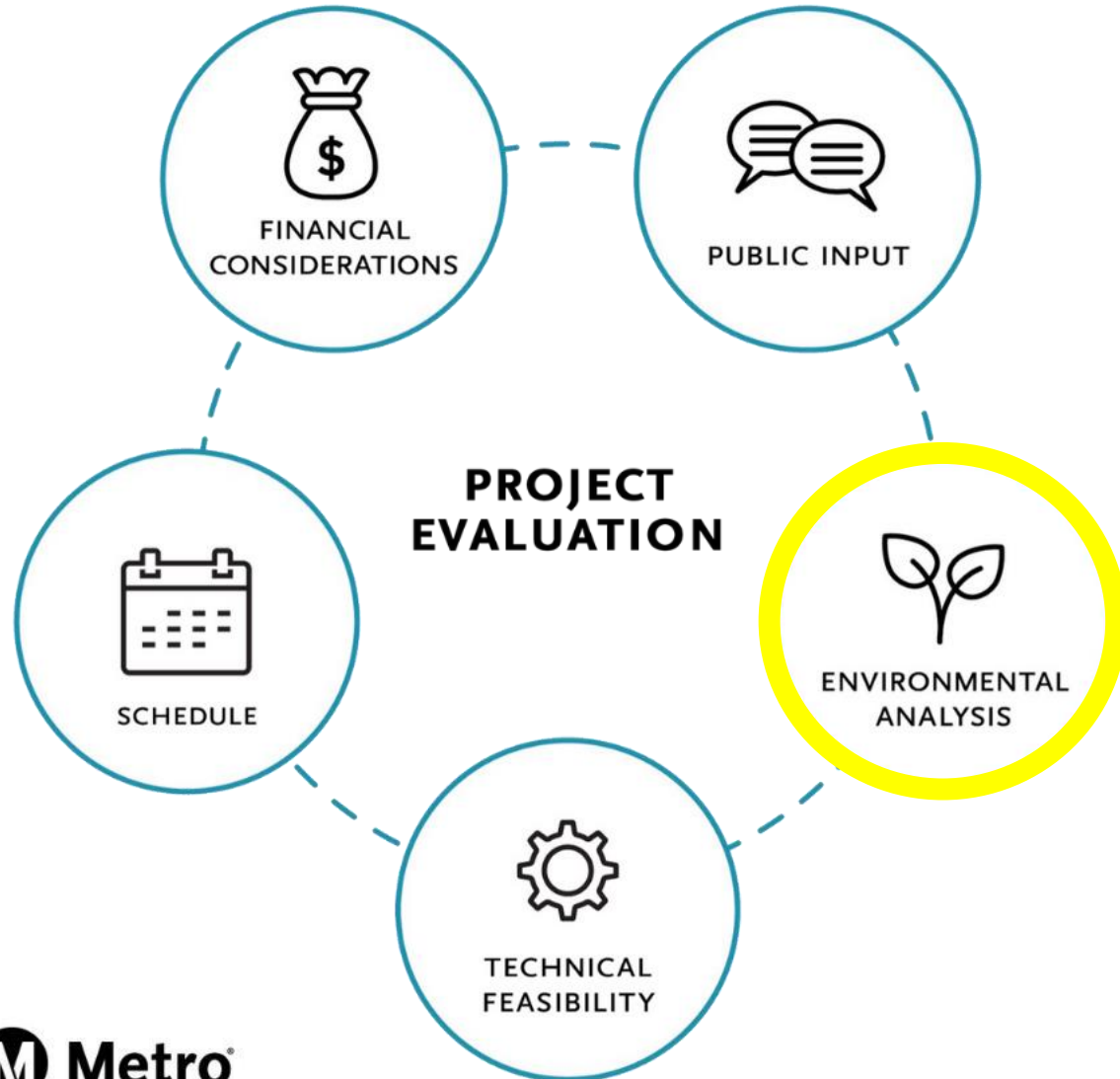
* Does not include e-bus travel time to UCLA for Alternative 1

Project Benefits: Increase in Transit Ridership Results in Health & Environmental Benefits

- > Fewer people driving means improvements to:
 - Air quality
 - Health
 - Traffic
 - Traffic safety
- > All alternatives perform similar to or better than Metro's busiest rail lines today
- > Wilshire Blvd/D Line Station busier than today's 7th & Metro in DTLA
- > UCLA Station becomes Metro's busiest non-transfer station



Project Evaluation: Environmental Analysis

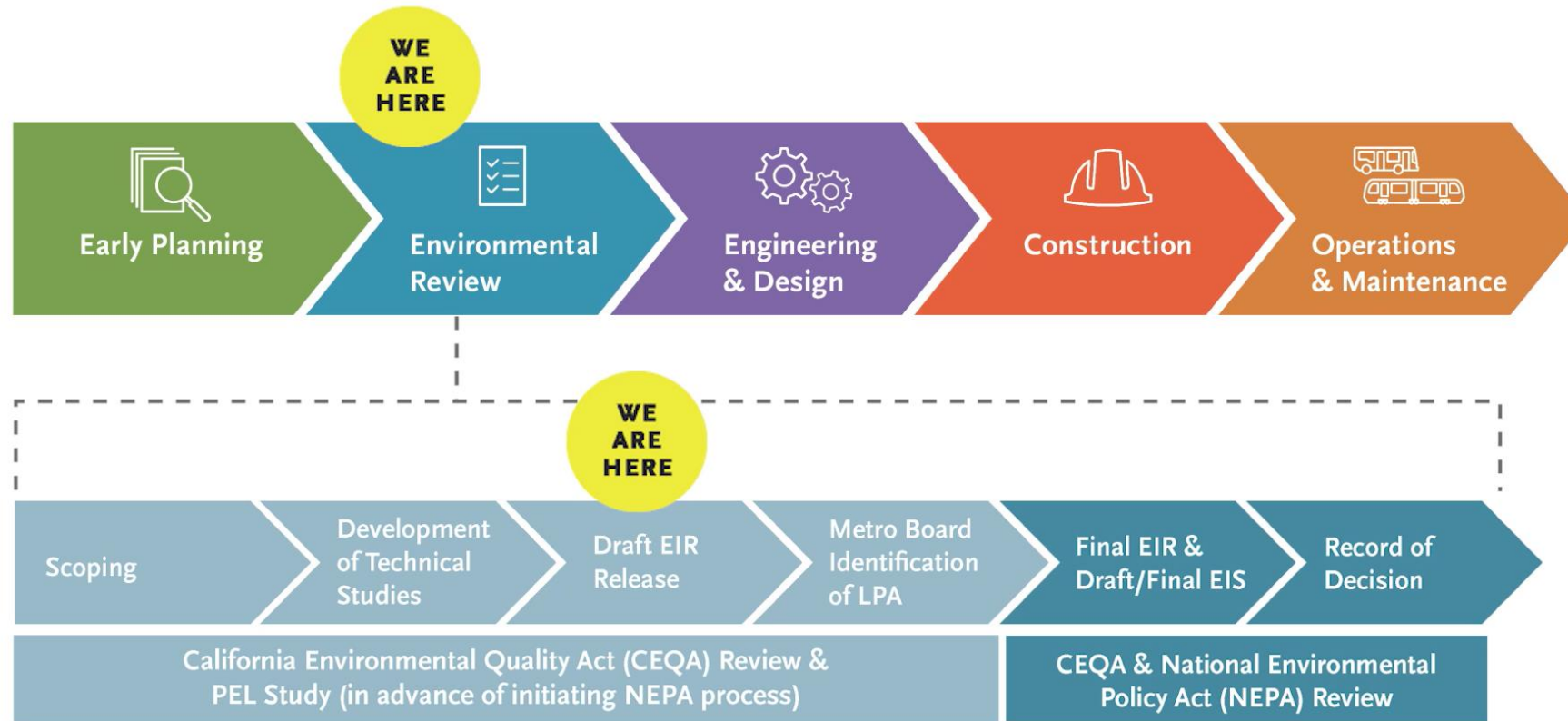


Environmental Analysis (Draft EIR):

- > Evaluates potential impacts of construction, operation and maintenance
- > Identifies cumulative impacts of project on the environment
- > Identifies and assesses potential mitigation measures to address potentially significant impacts

Overview of Environmental Process & Draft Environmental Impact Report (EIR)

Environmental Review Process



- > Metro has prepared Draft Environmental Impact Report (Draft EIR) on all alternatives consistent with California Environmental Quality Act (CEQA)
- > After public review of Draft EIR, Metro Board will consider identifying a Locally Preferred Alternative (LPA)
- > Next, Final EIR and NEPA review will complete environmental phase

Draft Environmental Impact Report (Draft EIR)

Draft EIR

Informs the public and decision-makers of potential impacts to the environment when considering a project decision

Project Description

- ▶ Objectives
- ▶ Project Design & Footprint
- ▶ Construction Methods & Duration
- ▶ Operations & Maintenance

Analysis

- ▶ Regulations
- ▶ Existing conditions
- ▶ Future conditions
- ▶ Potential Impacts
 - Construction
 - Operations
 - Cumulative
- ▶ Mitigation measures

Environmental Resources Evaluated

The Draft EIR identifies project impacts on the environment and addresses the following topics:

- Aesthetics
- Air Quality
- Biological Resources
- Cultural Resources
- Energy
- Geology and Soils
- Greenhouse Gas Emissions
- Growth Inducing Impacts
- Hazards & Hazardous Materials
- Hydrology and Water Quality
- Land Use and Planning
- Noise
- Population and Housing
- Public Services
- Recreation
- Transportation
- Tribal Cultural Resources
- Utilities and Service Systems
- Wildfire

Draft EIR discloses potential project impacts on the environment during construction and operations:

- No Impact
- Less than significant
- Less than significant after mitigation
- Significant and unavoidable

Draft EIR CEQA Findings

Summary of Potential CEQA Environmental Impacts

Majority of impact areas are “less than significant” during construction and operations *after mitigation*

Some alternatives have significant impacts after mitigation during **Construction:**

- Air Quality
- Cultural
- Paleontological Resources (Geology & Soils)
- Noise

Some alternatives have significant impacts after mitigation during **Operations:**

- Aesthetics
- Land Use
- Utilities and Service Systems

Level of Impact	Environmental Resource during Construction	Environmental Resource During Operations
Significant & Unavoidable	<ul style="list-style-type: none"> • Air Quality • Cultural Resources • Paleontological Resources (Geology and Soils) • Noise 	<ul style="list-style-type: none"> • Aesthetics • Land Use • Utilities and Service Systems
Less than Significant with Mitigation	<ul style="list-style-type: none"> • Aesthetics • Biological Resources • Geology & Soils (not Paleo) • Hazards & HazMat • Land Use • Public Services • Transportation • Tribal Cultural Resources • Wildfire 	<ul style="list-style-type: none"> • Biological Resources • Cultural Resources • Hazards & HazMat • Noise • Transportation • Wildfire
No Impact/Or Less than Significant	<ul style="list-style-type: none"> • Agricultural and Forest Resources • Energy • GHG Emissions • Growth Inducing • Hydrology & Water Quality • Mineral Resources • Population and Housing • Recreation • Utilities and Service Systems 	<ul style="list-style-type: none"> • Agricultural and Forest Resources • Air Quality • Energy • Geology, Soils, Paleo • GHG Emissions • Growth Inducing • Hydrology & Water Quality • Mineral Resources • Population and Housing • Public Services • Recreation • Tribal Cultural Resources

What is “Mitigation”?

- > “Mitigation Measure” – Measure that reduces an impact that is significant; either to less than significant OR reduces the scale of a significant unavoidable impact
- > All mitigation measures are aggregated into a “Mitigation Monitoring and Reporting Program” in conjunction with the Final EIR which then is adopted by the Metro Board
 - This provides a mechanism for assigning responsibility and tracking compliance with these measures through project implementation
 - Included in Metro construction contract specifications

Significant & Unavoidable Construction Impacts: Air Quality, Noise & Paleontological Resources

Air Quality (All Alts)

Significant & Unavoidable Impact: Exceeds thresholds for nitrogen oxides (NO_x), carbon monoxide & PM₁₀. Mitigation measures implemented but do not reduce emissions below thresholds during construction.

Noise and Vibration (All Alts)

Significant & Unavoidable Impacts: Temporary or periodic increases in noise and vibration levels that exceed FTA impact criteria

Mitigation measures implemented but do not reduce noise and vibration below thresholds during construction.

Paleontological Resources (Alts 3, 4, 5, 6)

Significant & Unavoidable Impacts: Underground tunnel boring could potentially destroy a Unique Paleontological Resource or Site

Impact for alternatives with tunnels.

Draft EIR includes strategies to avoid and minimize impacts at cut-and-cover excavation sites but impacts due to tunnel boring machines cannot be mitigated.

Significant & Unavoidable Construction Impacts: Cultural Resources (Alts 1, 3, 4, 6)

Significant & Unavoidable Impacts: Demolition of Historic Structures for Construction

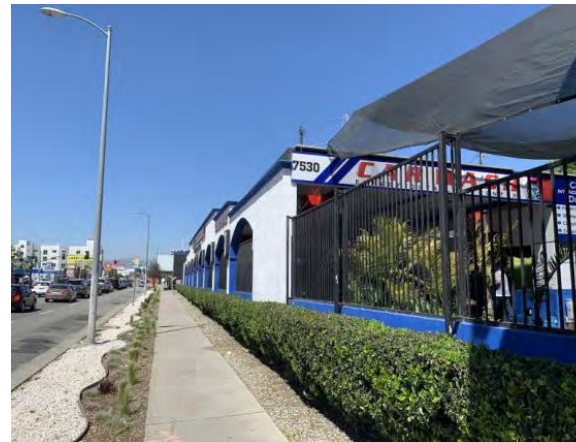
Alternative 1 & 3: Da Siani Ristorante (4511 Sepulveda
Blvd)



Alternative 4: Partial take of parking garage
(15300 Ventura Blvd)



Alternative 6: Valley Car Wash (7530 Van Nuys Blvd)



Significant & Unavoidable Operations Impacts: Aesthetics (Alt. 4)

Significant & Unavoidable Impact:

Addition of aerial alignment affects visual character of Sepulveda Blvd through Sherman Oaks and Van Nuys

- No feasible mitigation measures

Note: Other aerial alignments do not have the same impact due to different contexts.



Sepulveda Blvd looking north (left) and south (right) as aerial alignment crosses US 101

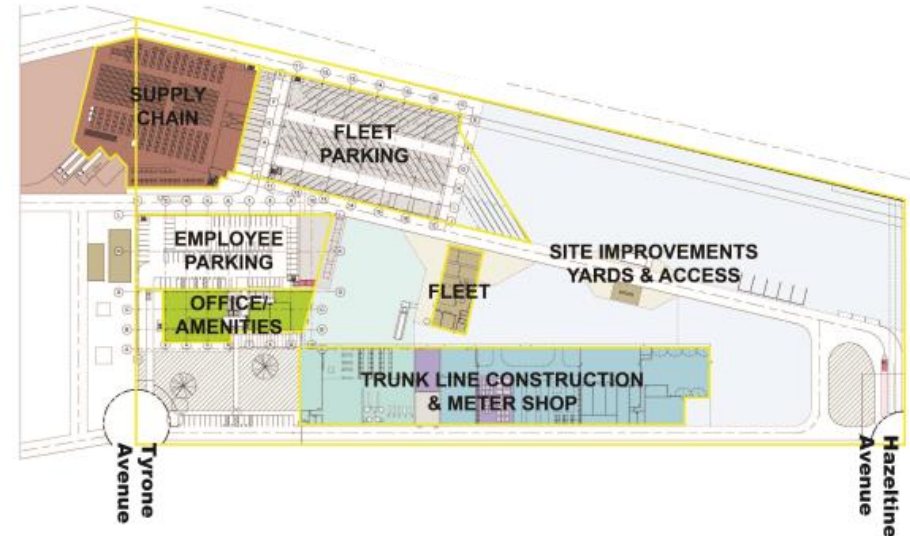
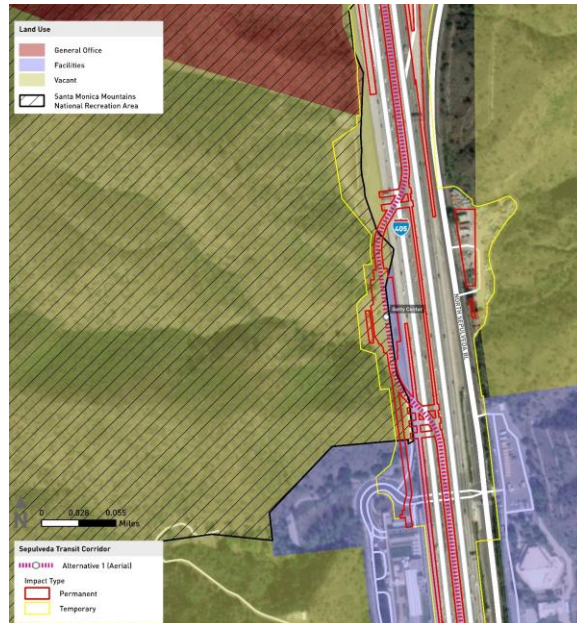
Significant & Unavoidable Operations Impacts: Land Use & Utilities and Service Systems

Land Use Significant & Unavoidable Impact: Conflict with land use plan, policy or regulation

Utilities and Service Systems Significant & Unavoidable Impact: Requires the relocation or construction of new or expanded utilities facilities which would cause significant environmental effects.

Land Use - Alternatives 1 & 3: Conflict with plans that prioritize the preservation of open space such as the Santa Monica Mountains Conservancy Comprehensive Plan and the Brentwood-Pacific Palisades and Van Nuys-North Sherman Oaks Community Plans.

Land Use & Utilities and Services Systems – MSF for Alts 4, 5 & 6 (and MSF Base Design for Alts 1 & 3): Conflict with the LADWP Urban Water Management Plan, which includes the Mid-Valley Water Facility project.



CEQA “Proposed Project”

- > CEQA requires identification of a **Proposed Project**
- > **Draft EIR identifies Alternative 6 as the Proposed Project**
- > **Alternative 6** is consistent with the description of the Sepulveda Transit Corridor Project as presented to the public when Measure M was passed
- > The proposed design, construction, and operation of Alternative 6 are similar to Metro’s existing heavy rail transit lines and are familiar to the Metro Board of Directors and the public
- > All alternatives are evaluated equally in the Draft EIR
- > The Metro Board may identify the Proposed Project or any of the alternatives as the **Locally Preferred Alternative**



CEQA “Environmentally Superior Alternative”

- > CEQA requires identification of an **environmentally superior alternative**
- > The environmentally superior alternative is the alternative that would be expected to generate the **fewest adverse environmental impacts**
- > When No Project Alternative generates the fewest environmental impacts, CEQA requires another alternative to the Proposed Project as the environmentally superior alternative
- > Because it generates the fewest adverse environmental impacts, **Alternative 1** is identified as the environmentally superior alternative
- > The Metro Board may identify the environmentally superior alternative or any of the alternatives as the **Locally Preferred Alternative**



Significant & Unavoidable Impacts

	Alt 1 + Base Design MSF	Alt 1 + MSF Design Option 1	Alt 3 + Base Design MSF	Alt 3 + MSF Design Option 1	Alt 4 + MSF	Alt 5 + MSF	Alt 6 + MSF
Aesthetics					●		
Air Quality	●	●	●	●	●	●	●
Cultural Resources	●	●	●	●	●		●
Geology, Soils, Seismicity, and Paleo Resources			●	●	●	●	●
Land Use and Planning	●	●	●	●	●	●	●
Noise and Vibration	●	●	●	●	●	●	●
Utilities and Service Systems	●		●		●	●	●
Total	5	4	6	5	7	5	6



Environmentally Superior Alternative

● = Operational Impact

● = Construction Impact

DRAFT FOR DISCUSSION PURPOSES ONLY

Other DEIR Findings & Considerations

Real Estate Acquisitions & Relocations

	Alt 1	Alt 3	Alt 4	Alt 5	Alt 6
Single-Family Residential Units	1	1	10	0	0
Multi-Family Residential Units	0	0	202	34	127
Estimated Individuals Relocated	3	3	531	85	343
Total Business Units	23	22	111	107	46

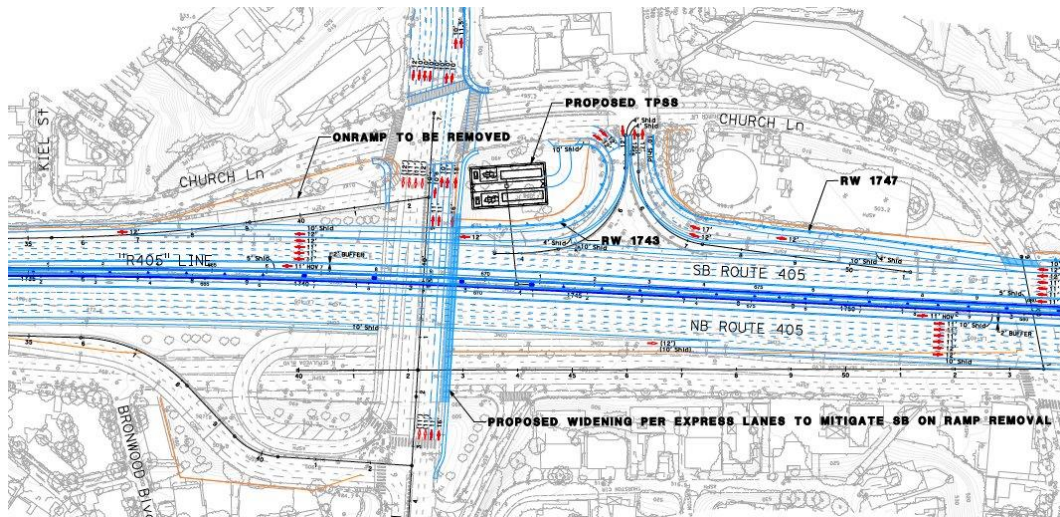
- > Draft EIR identifies properties that may be needed to construct and/or operate each alternative and intended use
 - Temporary (construction)
 - Permanent (operations)
 - Easements (below ground, overhead, access)
- > Draft EIR takes conservative approach
- > Many steps ahead before finalizing list of properties for acquisition based on LPA identification by Metro Board, design refinements to minimize impacts, completion of environmental process, and project approval by Metro Board
- > Consistent with Uniform Act and California Relocation Act, Metro would provide relocation assistance and compensation for displaced residents and businesses



Ramp Closures/Detours

Alternative 1 Ramp Closure

Permanent closure of on-ramp from eastbound Sunset Blvd to southbound I-405; Sunset BI bridge widened to facilitate access to Church Lane on-ramp to southbound I-405



Alternative 6 Construction Detour

Temporary closure of westbound I-10 off-ramps to Bundy Drive northbound and southbound for duration of construction; Centinela Avenue off-ramp less than quarter mile away



Tree Removal

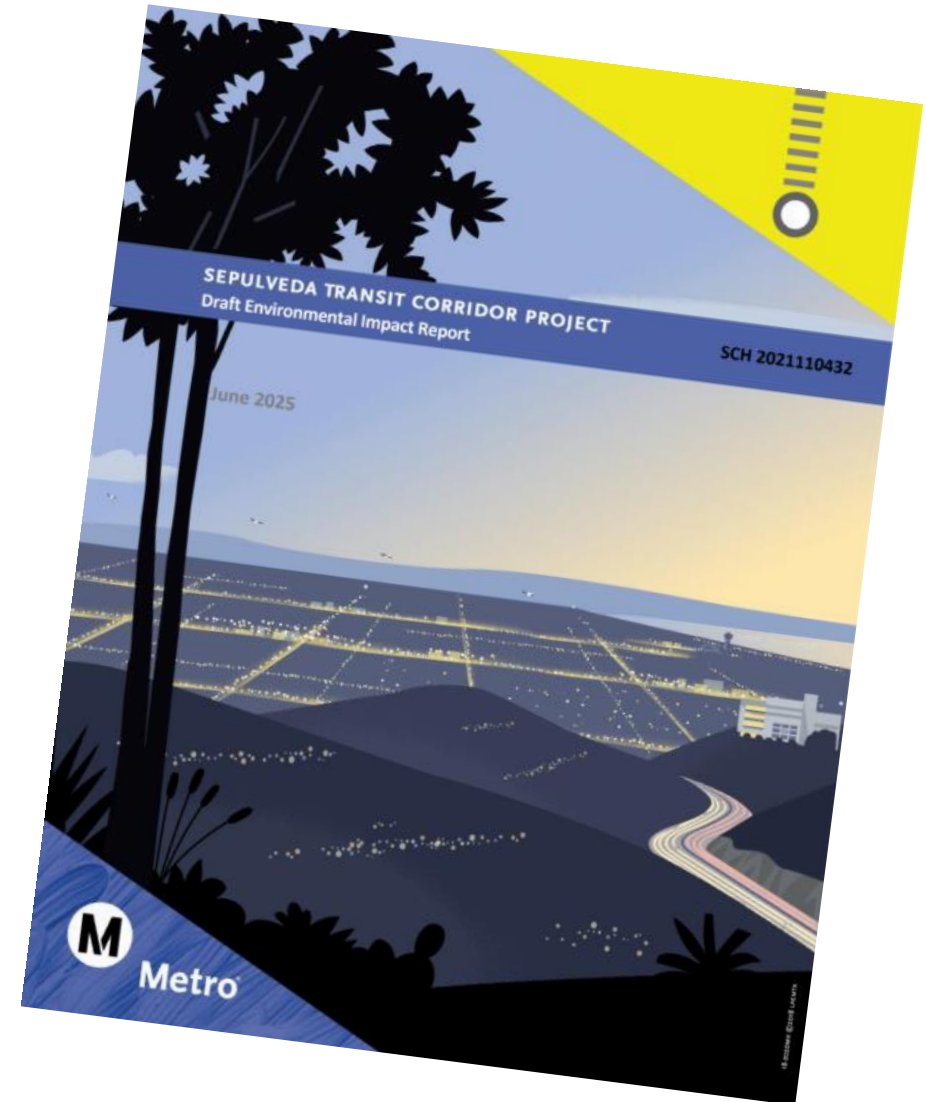
- > All Alternatives would require tree removal
- > This potentially significant impact is reduced to less than significant through mitigation
- > In general, trees would be replaced at 2:1 ratio, with 4:1 replacement ratio for protected trees

Alternative	No. of Trees to Remove	No. of Tree Replacements Needed as Mitigation
Alternative 1	3,282	7,056 to 7,252
Alternative 3	2,926	6,160 to 6,356
Alternative 4	1,575	3,314 to 3,466
Alternative 5	1,162	2,462 to 2,614
Alternative 6	938	2,534

How to Provide Comment

Draft EIR for Review

- > An online interactive version of the DEIR is available at: us.planengage.com/sepulvedacorridor
- > The DEIR and related files in PDF format can also be accessed from the project website
- > The printed Executive Summary is available at local libraries within the project area:
 - Mid-Valley Regional Library
 - Panorama City Branch Library
 - Van Nuys Branch Library
 - Sherman Oaks Martin Pollard Branch Library
 - Westwood Branch Library
 - West Los Angeles Regional Branch Library
 - Palms-Rancho Park Library
 - Pico Branch Library (Santa Monica)
 - Fairview Branch Library (Santa Monica)
 - Powell Library (UCLA)
- > The full DEIR is available at the Metro Library



Public Comments on Draft EIR

Comments may be submitted from June 2-August 30:

- > Via webform on Metro's website: metro.net/sepulvedacorridor
- > Via email: sepulvedatransit@metro.net
- > By phone: 213.922.7375
- > By U.S. Mail

Peter Carter, Project Manager
Metro
One Gateway Plaza, Mail Stop 99-22-6
Los Angeles, CA 90012

- > In writing at public information sessions*
- > In writing or verbally at public hearings**

*Spanish translation available

**Court reporter and Spanish translation available

Public Comment Form

Sepulveda Transit Corridor Project DEIR

Metro has a plan to make it easier to get around by creating better transit options between the San Fernando Valley and the Westside. The natural barrier created by the Santa Monica Mountains makes traveling between the Valley and the Westside challenging – and will require innovation and multiple solutions. Metro is working to evaluate alternatives for a high-quality, reliable transit service option connecting the San Fernando Valley and the Westside.

Metro has released the Draft Environmental Impact Report (DEIR) under the California Environmental Quality Act (CEQA). The DEIR analyzes a range of rail transit modes, alignments, and station locations to address the transportation needs of the Sepulveda corridor.

The DEIR is being circulated for public review and comment. After the public review and comment period, the Metro Board will have the opportunity to identify a Locally Preferred Alternative (LPA). Responses to all comments received during the comment period will be prepared as part of the final Environmental Impact Report.

Contact Information

*Indicates Required Fields

Submitted By *

First Name

Last Name

Address

City

State

California

ZIP (Required)

Your Comment

Insert comments on Sepulveda Transit Corridor Project DEIR

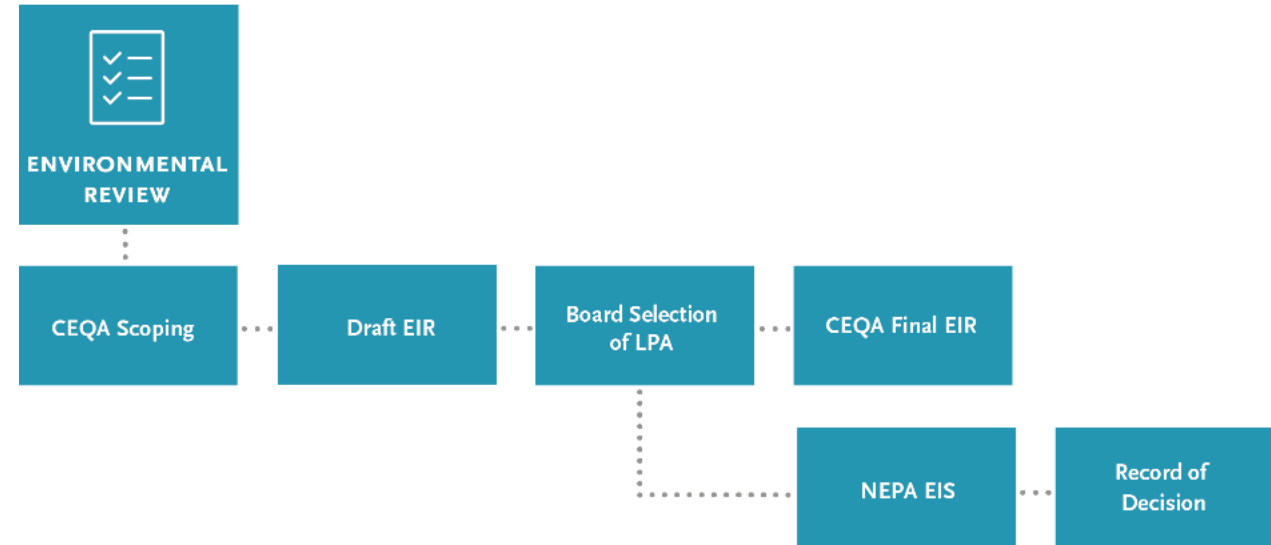
What Happens to My Comment?

- > Following the Draft EIR public comment period, **all comments will be summarized for consideration in Metro Board identification of a Locally Preferred Alternative**
 - Key themes across comments
 - General trends about who commented
 - Other relevant information
- > **All comments received** during the public comment period will be **responded to as part of Final EIR**
 - Final EIR will be published after a Locally Preferred Alternative has been identified

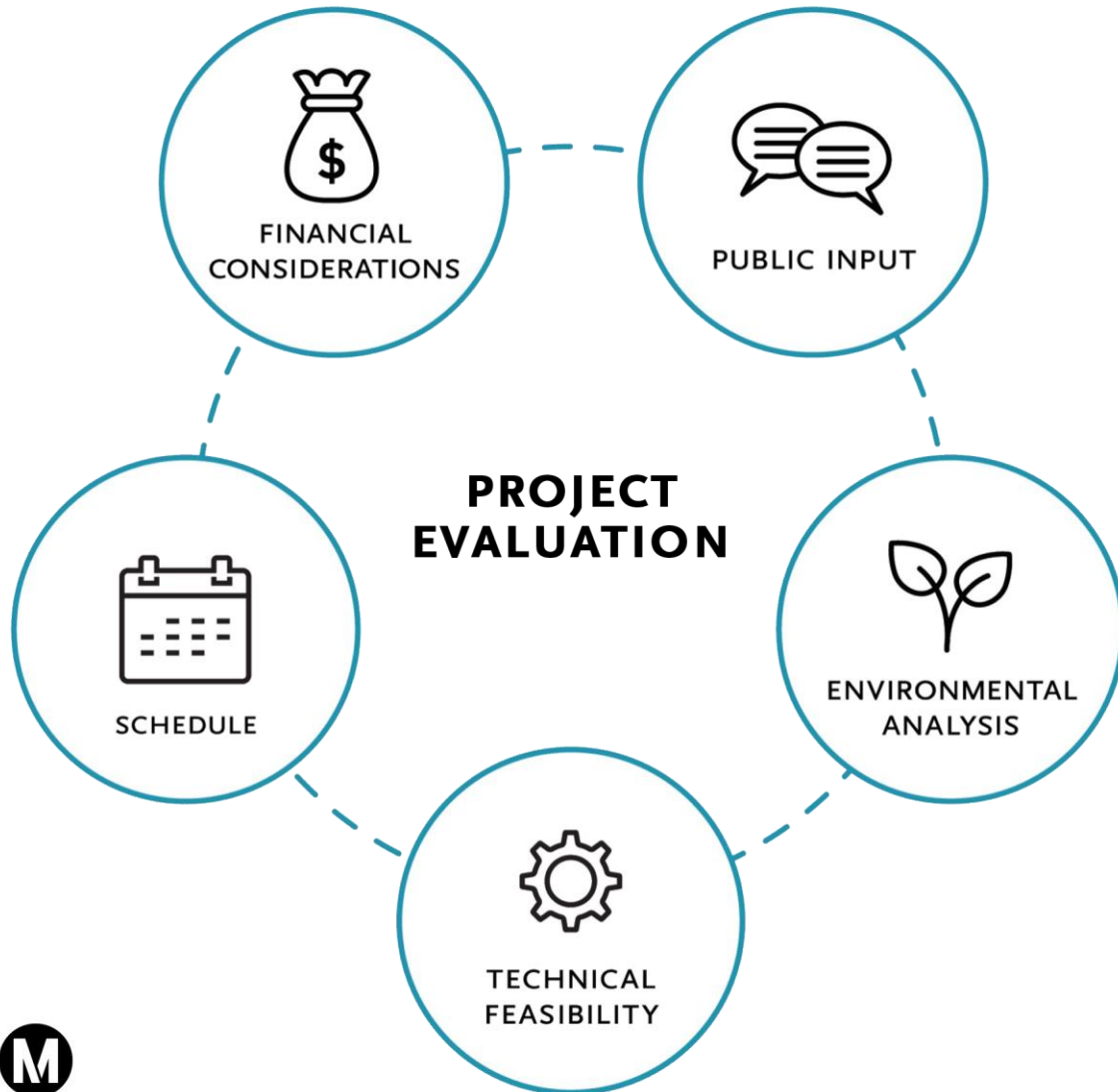
Next Steps

Longer-Term Next Steps

- > Review of comments received on Draft EIR
- > Board identification of **Locally Preferred Alternative (LPA)**
- > Design advancement of LPA considering:
 - **Comments** received on Draft EIR
 - **Cost and risk reduction** strategies
- > Development of:
 - **Final EIR** – Including responses to public comments
 - **Draft/Final EIS**
 - **Funding Plan**
- > Delivery method evaluation



LPA Decision Considerations



LPA staff recommendation and Board identification to consider many factors including but not limited to:

- > Draft EIR
- > Public comments received during comment period
- > Technical analyses
- > Stakeholder input
- > Project goals and objectives
- > Cost
- > Ridership
- > Schedule
- > Cost Benefit Analysis

Draft EIR Resources

Learn More

[Interactive Draft EIR](#)

Metro Sepulveda Transit Corridor

References Abbreviations and Acronyms Provide Comment

- Welcome
- Executive Summary - English
- Resumen Ejecutivo - Español
- 1 Introduction
- 2 Project Description
- 3 Environmental Analysis
- 4 Comparison of Alternatives
- 5 Public Participation and Outreach
- 6 References
- 7 Abbreviations and Acronyms
- 8 Contributors and Preparers
- Appendices

Sepulveda Transit Corridor

Welcome

Welcome to the Sepulveda Transit Corridor Project Draft Environmental Impact Report. This site provides a full digital copy of the Draft Environmental Impact Report.

How to use this site

To navigate the site:

- Use the menu on the left-hand side of the page to see the sections of the site.
- To jump to a specific section, use the menu to select the section of interest.
- The down arrows next to the pages allow you to expand that section and see all the sub-pages underneath it.
- The top navigation bar provides quick access to References, Abbreviations and Comment.
- To search for a keyword, use the magnifying glass in the top menu bar.

[Project Hub](#)

Metro Sepulveda Transit Corridor

Home Project Overview Alternatives Technologies Stations Maintenance & Storage Facilities Environmental Process More

[Para español, haga clic aquí.](#)

We're exploring alternatives to the 405.

Sepulveda Transit Corridor

Upcoming Meetings

Draft EIR Information Sessions

Tuesday, June 24, 2025, 5:30–7:30pm

Presentation will begin at 6pm

Westwood United Methodist Church
10497 Wilshire Bl, Los Angeles, CA 90024

Saturday, July 12, 2025, 10:00am 12:00pm

Presentation will begin at 10:30am

Westfield Topanga Community Center
21710 Vanowen St, Canoga Park, CA 91303

Wednesday, July 16, 2025, 5:30–7:30pm

Presentation will begin at 6pm

Veterans Memorial Building Rotunda Room
4117 Overland Av, Culver City, CA 90230

Monday, July 21, 2025, 5:30-7:30pm

Presentation will begin at 6pm

Sherman Oaks East Valley Adult Center
5056 Van Nuys Bl, Building B, Sherman Oaks, CA 91403

Draft EIR Public Hearings

Wednesday, August 6, 2025, 11:30am-1:00pm

Webinar Link: <https://bit.ly/STC-Aug6>

Webinar ID: 827 5651 8473

Call In Number: 213.338.8477

Thursday, August 7, 2025, 5:30–7:30pm

Presentation will begin at 6pm

Westwood United Methodist Church
10497 Wilshire Bl, Los Angeles, CA 90024

Saturday, August 9, 2025, 10:00am-12:00pm

Presentation will begin at 10:30am

Westfield Topanga Community Center
21710 Vanowen St, Canoga Park, CA 91303

Tuesday, August 12, 2025, 5:30–7:30pm

Presentation will begin at 6pm

Veterans Memorial Building Rotunda Room
4117 Overland Av, Culver City, CA 90230

Monday, August 18, 2025, 5:30-7:30pm

Presentation will begin at 6pm

Sherman Oaks East Valley Adult Center
5056 Van Nuys Bl, Building B, Sherman Oaks, CA 91403

The presentation will be the same at all information sessions and public hearings. Written public comment will be accepted at all meetings; verbal public comment will be available at the public hearings.

Stay Connected



Peter Carter, Project Manager
Metro

One Gateway Plaza, Mail Stop 99-22-6
Los Angeles, CA 90012



213.922.7375



sepulvedatransit@metro.net



metro.net/sepulvedacorridor



@metrolosangeles

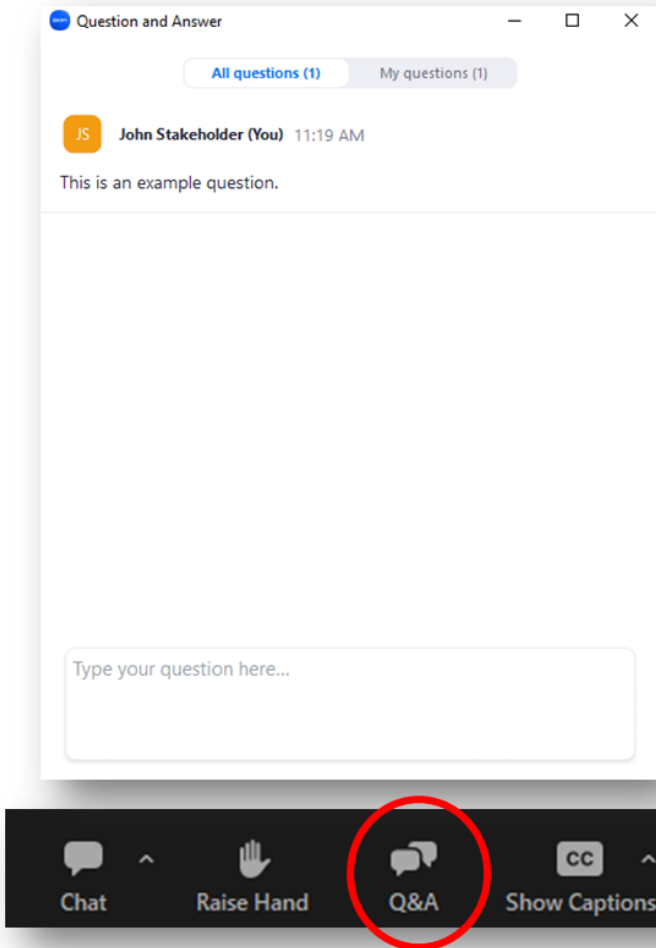


losangelesmetro



Questions & Answers

How to Submit Questions



- > We look forward to hearing from you
- > You're welcome to submit questions for the Metro team using the Q&A function in Zoom
- > We'll answer as many questions as we can in the time available, focusing on questions of broadest interest
- > All questions (including those we can't get to today) will be shared with the project team as a comment and responded to in the Final EIR