



We're building a multimodal future for the Long Beach-East Los Angeles Corridor

Estamos construyendo un futuro multimodal para el Corredor de Long Beach–East Los Angeles



Public Meeting #1

Thursday, August 28, [2025](#) | 6- 7:30pm | Virtual Meeting: Zoom



Attendance and Special Guests

Introduction

Local Jurisdictions

Oscar Cisco, Field Representative, California State Senate District 33
Adriana Martinez, Executive Deputy to Metro Board Chair Fernando Dutra
Franbert Calderon, Chief of Staff, City of Long Beach District 8
Ayleen Huerta, Legislative Aide, City of Long Beach

PROJECT TEAM

Metro

Michael Cano, Senior Executive Officer (interim), Metro
Akiko Yamagami, Senior Manager, Transportation Planning, Metro
Lorena Sanchez, Manager, Community Relations, Metro
Aren Hacoupian (Metro)

HereLA

Shannon Davis, Co-Director, HereLA
Amber Hawkes, Co-Director, HereLA

Arellano Associates

Melissa Holguin, Senior Project Manager, Arellano Associates
Laura Herrera, Project Manager, Arellano Associates
Yvette Ximenez, Deputy Project Manager, Arellano Associates
Adrian Farran, Senior Project Coordinator, Arellano Associates
Reanna Jimenez, Project Coordinator, Arellano Associates
Emily Vargas, Assistant Project Coordinator, Arellano Associates

Introduction

The Long Beach–East LA Corridor Mobility Investment Plan (LB–ELA CMIP), shaped by over two years of community collaboration, was approved by the Metro Board in April 2024 with up to \$4 billion in potential funding. The project is now moving into its implementation phase, where the focus shifts from planning to delivering sustainable, multimodal improvements. As part of this transition, the Task Force and Community Leadership Committee (CLC) will evolve into two new groups: a Community Working Group (CWG) that will provide regular, year-round input to keep community priorities at the center, and Technical Working Groups (TWGs) made up of subject matter experts who will ensure projects are safe, fundable, and technically sound. Together, these groups will guide Metro’s recommendations to the Board, ensuring community voices guide the future of the corridor.

The intention of the meeting was to introduce the next phase of the LB-ELA CMIP, including the transition from the Task Force and CLC to the new Community Working Group (CWG) and also the

Technical Working Groups (TWGs). Metro shared the draft structure, goals, and application process for the CWG and explained how the CWG and TWGs will work together to ensure both community voices guide project implementation.

The meeting was held virtually on Thursday, August 28, 2025, and transmitted via Zoom. Community members had the opportunity to ask questions, provide feedback, and learn how to stay involved, whether by expressing interest in joining the CWG, signing up for updates, or participating in future meetings.

Simultaneous interpretation in Spanish was provided. The presentation can be referred to under the meeting materials.

Public Meeting #1

1. Welcome, Introduction, Metro Updates, Agenda Review, Meeting Objectives

- > Laura Herrera from Arellano Associates, welcomed attendees and shared interpretation options, how to participate during the Q&A session and Metro's code of conduct and introduced Michael Cano, Senior Executive Officer (interim), Metro, to officially open the meeting. Four representatives from local jurisdictions were in attendance and 28 community members.
- > Mr. Cano introduced the Metro project team and introduced Amber Hawkes, Co-Facilitator from HereLA.

2. Agenda Item #1: Introduction & Goals

- > Ms. Hawkes introduced the 4 agenda items, today's goals, investment plan updates, phase II engagement, and the current project timeline and next steps.
- > Metro staff member Lorena Sanchez provided updates from Metro.

3. Agenda Item #2: Investment Plan & Updates








- > Mr. Cano provided an overview of the investment plan, a map of the plan location and the plan process to include the Task Force, Community Leadership Committee (CLC), and Working Groups.
- > Shannon Davis, Co-Director, HereLA, facilitated the Zoom poll questions:
 - Zoom Poll # 1 was shared. Attendees were encouraged to participate and select from the following options:
 - **Which area of the LB-ELA corridor do you represent? (Choose One)**
 - North Corridor (*East Los Angeles, Boyle Heights*)
 - Southeast Cities (*Bell, Bell Gardens, Bellflower, Commerce, Cudahy, Downey, Huntington Park, Lakewood, Lynwood, Maywood, Montebello, Paramount, South Gate, Vernon, Walnut Park*)
 - South Corridor (*Carson, Compton, East/Rancho Dominguez, Long Beach, San Pedro, Signal Hill, Wilmington*)

- **Southeast Cities were a total of 50% of responses.**
- Zoom Poll # 2 was shared. Attendees were encouraged to participate and select from the following options:
 - **What is your relationship to the Long Beach – East LA Corridor?**
(Choose one)
 - Live
 - Work
 - Live and Work
 - Other
 - **42% of participants selected Live and Work**
- > Ms. Hawkes provided details on the Investment Plans guiding principles & Goals:

Investment Plan Guiding Principles & Goals

Principios y Metas del Plan de Inversión

Investment Plan Goals

-  Foster local and regional clean **air quality**.
-  Support thriving communities by enhancing the **health and quality of life** of residents.
-  Enhance the **natural and built environment**.
-  Improve the **mobility** of people and goods.
-  Make all modes of travel **safer**.
-  Increase community access to quality jobs, workforce development, and **economic opportunities**.
-  Ensure **prosperity** by strengthening LA County's economic competitiveness and increase access to quality jobs, workforce development, and economic opportunities for all communities, with a focus on strengthening LB-ELA Corridor communities, which have been, and continue to be, harmed by economic development.

Metas del Plan de Inversión

-  Fomentar la **calidad del aire** limpio a nivel local y regional.
-  Apoyar comunidades prósperas **mejorando la salud y la calidad de vida** de los residentes.
-  Mejorar el **entorno natural y construido**.
-  Mejorar **la movilidad** de las personas y las mercancías.
-  Hacer que todos los modos de viaje sean más **seguros**.
-  Aumentar el acceso de la comunidad a empleos de calidad, desarrollo de la fuerza laboral y **oportunidades económicas**.
-  Garantizar la **prosperidad** fortaleciendo la competitividad económica del condado de Los Ángeles y aumentar el acceso a empleos de calidad, el desarrollo de la fuerza laboral y las oportunidades económicas para todas las comunidades, con un enfoque en el fortalecimiento de las comunidades del corredor LB-ELA, que se han visto y continúan viéndose perjudicadas por el desarrollo económico.

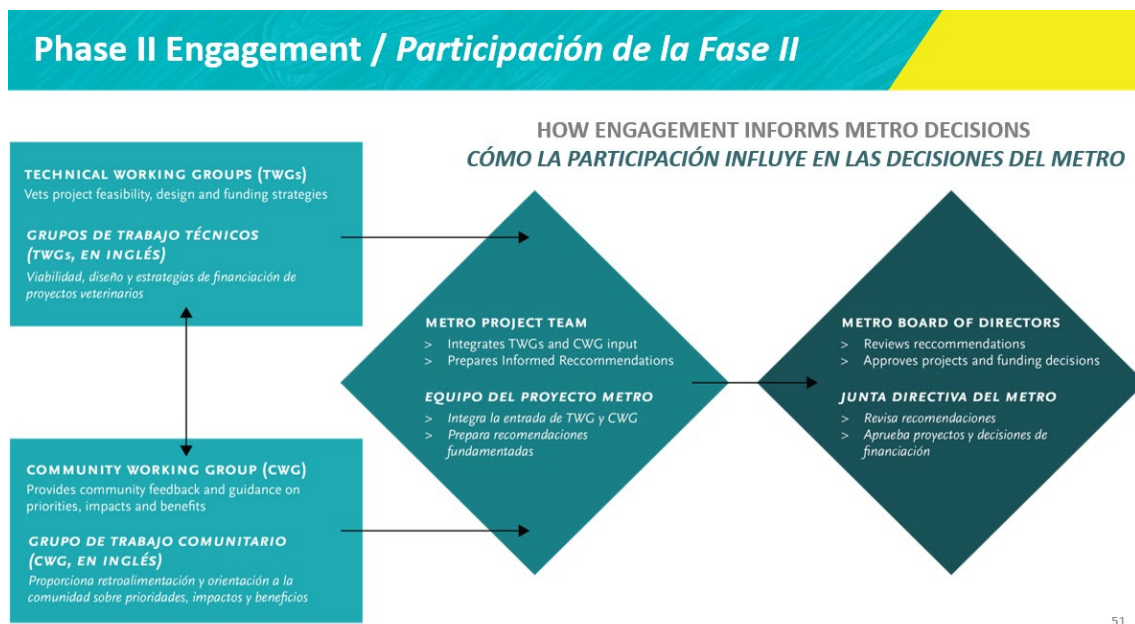


- > Mr. Cano, shared awards received since the adoption of the Investment Plan
- > Ms. Hawkes facilitated Zoom poll #3. Attendees were encouraged to participate and select from the following options:
 - **What are your main priorities for the LB-ELA corridor? (Choose top two)**
 - Clean air quality
 - Enhanced health and quality of life
 - Enhanced natural and built environment
 - Improved mobility
 - Safer transportation for all modes
 - Economic opportunities
 - Ensuring prosperity
 - The top two priorities (tied) were **Clean air quality and Enhanced health and quality of life**, followed by **Improved mobility and Safer transportation**.

- > Ms. Hawkes and Ms. Davis from HereLA, shared the Investment Plan including both Projects and Programs. Initial investments were shared and initiatives completed and underway were shared.
- > The CLC Reflections and Recommendations Report and Equity Toolkit were also shared.
- > Metro’s Akiko Yamagami discussed details on current initiatives: Rail to River Segment B, Zero-Emission Truck Program, Shoemaker Bridge/Shoreline Drive Project. **Details on these initiatives can be found on slides 38-40.**

4. Agenda Item #3: Phase II Engagement

- > Ms. Davis led the discussion on phase II engagement including the transition to Technical Working Groups (TWGs), Community Working Groups (CWGs), and Public Meetings. These will be the three key components of the new phase of engagement.
- > Each component was described in detail. **Refer to slides 43-51.**



- > Ms. Hawkes facilitated the Zoom pool questions:
 - Zoom Poll # 4 was shared. Attendees were encouraged to participate and select from the following options:
 - **Do you think the application criteria are suitable for selecting a representative, committed group of CWG members? (Choose one)**
 - Yes
 - No
 - **62.5% of participants chose Yes**
 - Zoom Poll # 5 was shared. Attendees were encouraged to participate and select from the following options:
 - **How can we make sure the CWG is effective? (Select all that apply)**

- Providing office hours where CWG members can ask additional questions
 - Offering training and learning sessions to help CWG members understand transportation planning
 - Ensuring active interaction with/facilitation from Metro staff
 - Other (write in your response in the chat)
 - **The top two ideas (tied) are training sessions and active interaction with Metro staff, followed by office hours.**
- > Ms. Davis shared what was heard during the Task Force and CLC meeting.
- Zoom Poll # 6 was shared. Attendees were encouraged to participate and select from the following options:
 - **Are you interested in applying for the CWG? (Choose one)**
 - Yes
 - No
 - Not Sure
 - **46.7% answered not sure.**

5. Q&A with Metro

- > **Ms. Hawkes opened the Q&A portion of the meeting.**
- **Discussion Highlights:**
 - Participants asked whether CWG criteria would mirror the earlier CLC process and suggested adding factors such as chronic health conditions (e.g., asthma).
 - Some supported giving priority to former CLC members for their experience and commitment, while others stressed the importance of keeping applications open for broader representation.
 - Attendees highlighted the need to include communities such as Boyle Heights and recommended distributing applications through CBOs, neighborhood associations, libraries, parks, churches, and city social media platforms.
 - There was broad support for hybrid meeting formats to improve accessibility and safety.
 - **Community Concerns**
 - Questions were raised about the influence of Technical Working Groups (TWGs), their membership, and how feedback would be shared transparently.
 - Concerns about how new applicants would be integrated and kept up to speed in the process.
 - Frustration with the pace of project delivery, with some participants pressing for faster movement on projects such as the Southern Connector and SELA Bridge Park.

- Calls for clearer communication on project timelines and meeting schedules to support consistent community engagement.

6. **Next Steps for Metro**

- > Ms. Sanchez shared upcoming meetings dates and opportunities for feedback.
 - **Feedback Opportunities:** Task Force, CLC members, and the public can submit feedback on the CWG process through September 12 on the [CWG Interest & Feedback Form](#) first shared during the Public Meeting #1.
 - **CBO Engagement:** CBOs will use a social media toolkit to promote the CWG Interest and Feedback Form and garner excitement for the CWG application release.
 - **CWG Application & Outreach:** Feedback will shape the final CWG application (open October 6–November 14), with Public Meetings #2 and #3, plus additional CBO outreach, pop-ups, and youth engagement to encourage participation.
 - **Next Steps:** Metro will select and announce CWG members by the end of 2025
- > Lorena Snachez from Metro closed out the meeting
- > The meeting was adjourned at 7:30 pm

Meeting Format Logistics

- Meeting Format: Virtual
- Participants: Public

Attachments:

[Presentation](#)

[Virtual Screen Shots](#)

[Public Meeting #1 Comment Log](#)