

Welcome!

We will begin in a few moments.

**LB-ELA Task Force
Zero-Emission Truck Working Group
Special Meeting #19
October 31, 2023**

Working Group Member Identification

1

After launching the Zoom meeting, click on the "Participants" icon at the bottom of the window.

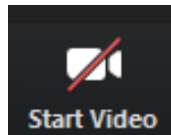


2

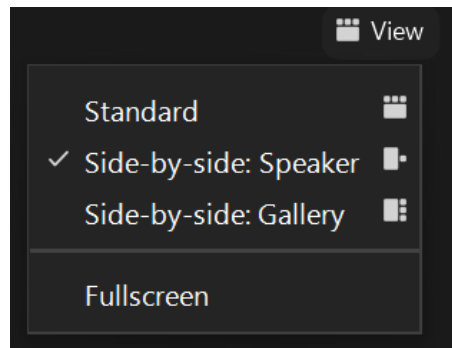
In the "Participants" list on the right side of the Zoom window, hover over your name and click on the "Rename" button.

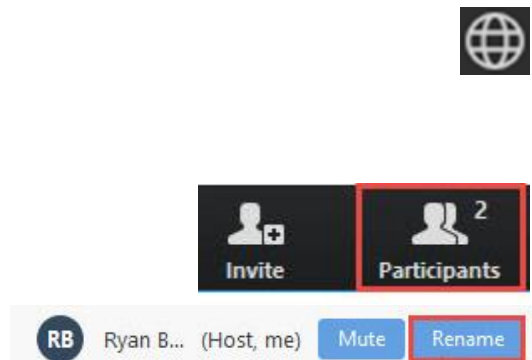
Turn on Camera

- > To **start** and **stop** your video, click the camera icon at the bottom left of your control panel



- > To switch between views during the meeting click or tap on **Standard**, **Side-by-side Speaker View**, and **Side-by-side Gallery View** at the top right corner of your zoom screen





Click **Interpretation** to choose your language.

- > To hear the interpreted language only, click **Mute Original Audio** (Optional).

Change your Zoom screen name to include name, agency/organization.

- > Click **Raise Hand** in your meeting controls, **Press*9** on the phone line, or raise your hand physically.
- > To lower your hand, click **Raise Hand** in your meeting controls.
- > The **Q&A** button is located on the control panel at the bottom of your screen.
- > To **mute** and **unmute**, click the microphone icon on the bottom left of your control panel.
- > To **start** and **stop** your video, click the camera icon at the bottom left of your control panel.
- > **Technology & interpretation support:**
323.609.3345

Welcome!

We will begin in a few moments.

**LB-ELA Task Force
Zero-Emission Truck Working Group
Special Meeting #19
October 31, 2023**



Erika C.B. Morales

Partner, Morales + Morales Partners

Welcome, Agenda Review, and Purpose
of the
Long Beach – East LA Corridor
Zero-Emission Truck (ZET) Working Group

Detailed Agenda

- 1:00pm** **Welcome, Agenda Review, and Purpose of the Zero-Emission Truck Working Group**
- 1:05pm** **Agenda Item #1: Metro Update**
- 1:15pm** **Agenda Item #2: LACI Blueprint Implementation Grant Funding Request**
- i. Presentation by Jack Symington, Senior Program Manager, LACI*
 - ii. Working Group Discussion*
- 1:50pm** **Closing Remarks and Upcoming Meetings**
- 2:00pm** **Adjournment**

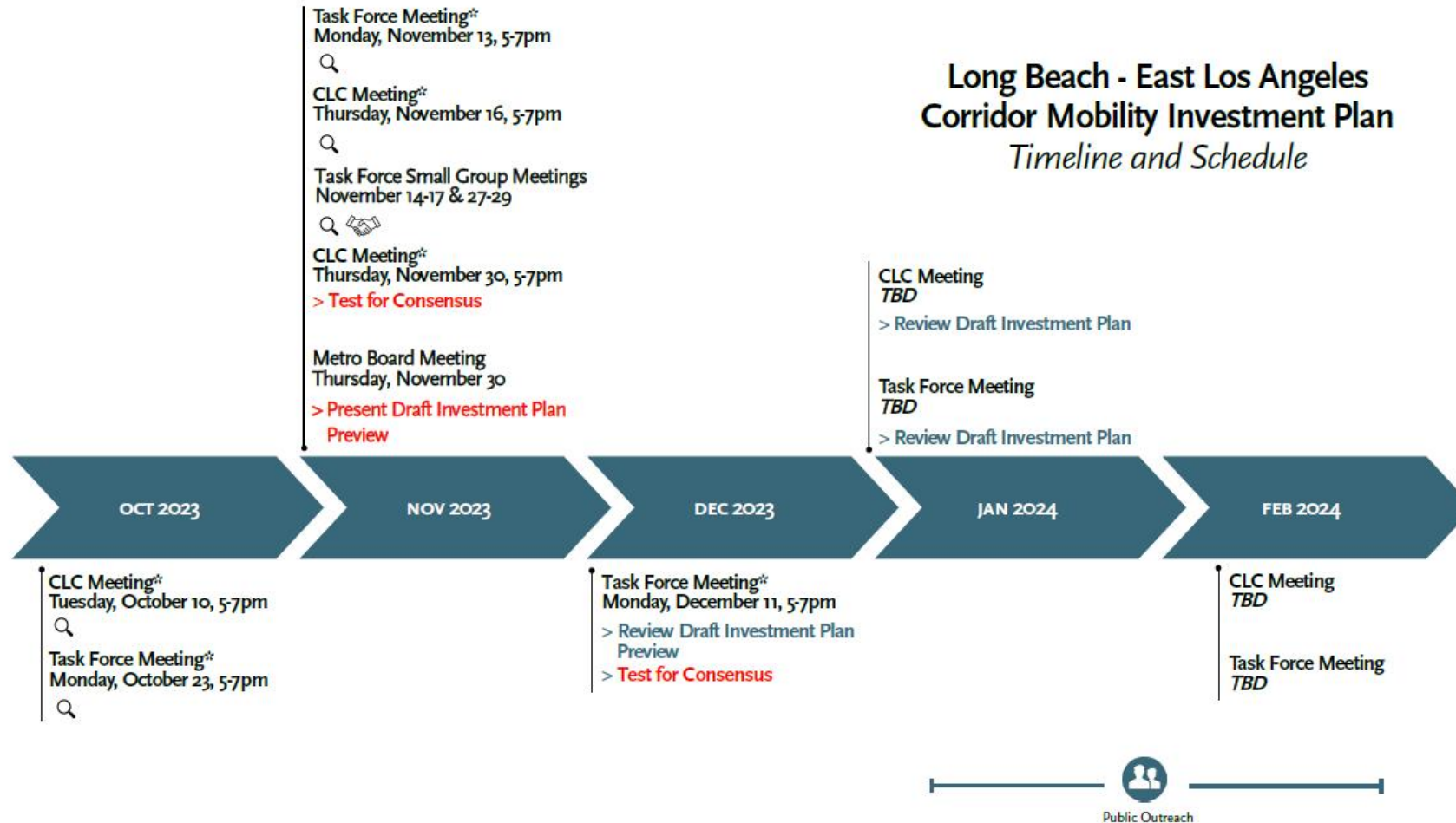
Meeting Objectives

- > Receive information on LACI's California Energy Commission's (CEC) Blueprint Implementation Grant Funding Request
- > Conduct a test for consensus on whether to support the LACI's request to commit a portion of the \$50 million in seeding funding for the LACI's CEC Blueprint Implementation Program

Agenda Item #1: Metro Update

Where We Are

Long Beach - East Los Angeles Corridor Mobility Investment Plan *Timeline and Schedule*



* Virtual Meeting

** Small Group meetings will be scheduled for all Task Force Members.
CLC Members can also join these meetings.

Evaluating & Refining Projects & Programs	Consensus-Building	Clarification and Continued Discussion
Creating an Investment & Policy Strategy for Implementation	Facilitated Roundtable Discussion	

ZET Program Recap – Metro Board Direction

> **Metro Board Direction and desired outcomes**

- \$200 million minimum funding target
- Leverage Board-approved \$50 million with private, regional, state, and federal funding
- Accelerated ZE deployment in the Long Beach-East LA (LB-ELA, formerly I-710 South) Corridor
- Collaboration with regional stakeholders
- Independent from but aligned with overall LB-ELA Corridor Task Force Investment Plan process

> **Strategies to accomplish outcomes**

- Convene and collaborate with community and regional stakeholders
- Develop a scope of work for the ZET Program
- Identify regional funding partners
- Identify discretionary grant opportunities
- Identify near and long-term opportunities
- Identify policy and legislative barriers to implementation
- Develop approaches to understanding potential community impacts and creating community benefits

ZET Program Principles – Overview

1

Maximize leverage of seed funding

by collaborating with regional partners and funding agencies.

2

Expeditious Deployment of Resources

to maximize the buying power and benefit of investment while supporting community engagement and effective outreach.

3

Coordination

with regional and funding partners, government agencies, and key stakeholders.

4

Community Engagement

that centers corridor residents and stakeholders throughout the development process.

5

Workforce Development

that ensures community benefits and access to opportunity through the pursuit and implementation of ZE Technology.

6

Corridor Community Benefits

by creating economic opportunities, improving air quality, and reducing long-standing health impacts generated by diesel trucks.

7

Equitable Outcomes

ensured by performance metrics that evaluate sustainable outcomes.

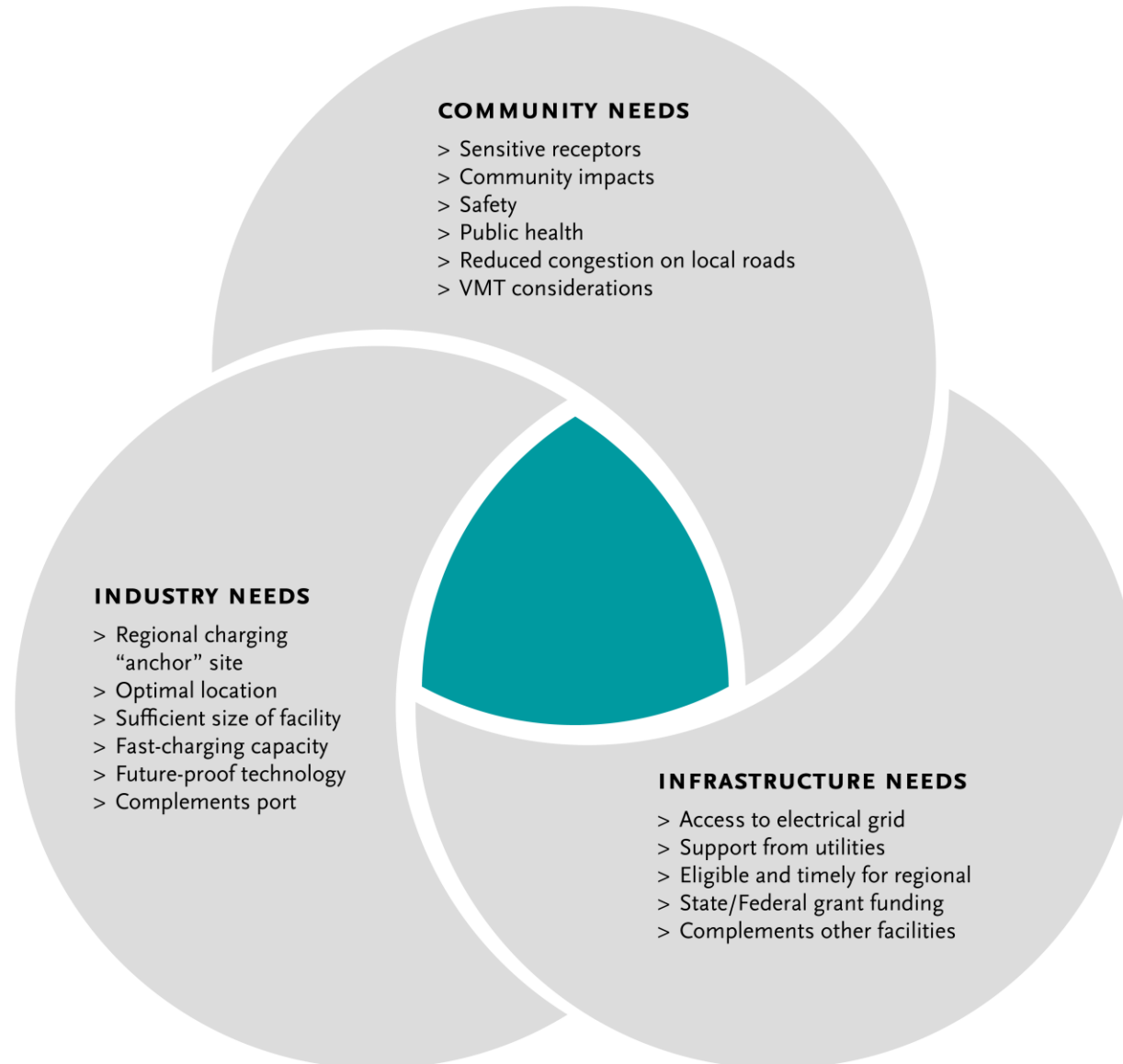
8

Legislative Platform

designed to support the accelerated, equitable deployment of ZE technology by reducing barriers and increasing incentives to adoption.

Metro Vision:

Regional Zero-Emissions MD/HD Truck Charging and Fueling Facilities



Agenda Item #2:

LACI Blueprint Implementation Grant Funding Request

*Presentation – Jack Symington,
Senior Program Manager, LACI*



Jack Symington
Senior Program Manager
Los Angeles Cleantech Incubator



JT Steenkamp
Director, Infrastructure Projects
and Technology
Prologis



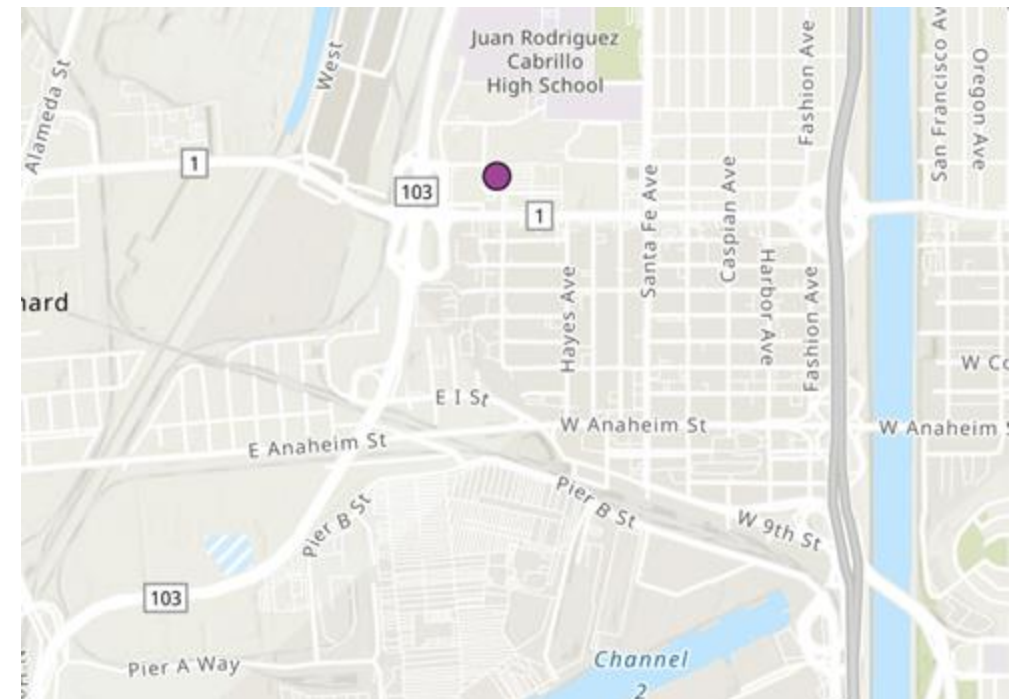
Henrik Holland
Global Head of Project Mobility
Prologis

LACI Proposed LB-ELA Corridor Charging Project

- > LACI is building an application to the open CEC Grant Funding Opportunity: M/HD ZEV Blueprint Implementation
 - Goal is to fund shovel-ready sites identified in LACI's 710 Blueprint; prioritizing two sites
 - Minimum 25% match - more match creates more competitive application
- > Metro interested in providing co-funding for one site: 2161 Technology Place, Long Beach - Prologis facility
- > LACI looking to include this co-funding in GFO application due November 13th; would strengthen application
- > Project aligns with Metro's goals for ZE Truck Program Investment
 - Opportunity to partner with CEC, MSRC, CalSTA, Prologis for leveraged investment immediately adjacent to San Pedro Bay Port complex

2161 Technology Place - Project Details - Tech. Specs and Funding

- > Total Budget: \$10,000,000
 - 12 dual-port 360 kW chargers (24 dispensers for simultaneous charging) and 2 MWh BESS
- > Hybrid public/shared setup
 - Fleets committed for utilization
 - Remaining % made publicly available
- > Projected completion in Q1 2025 (12 months from agreement)
- > Co-funders
 - MSRC: \$557,280
 - CalSTA: \$1,857,600
 - CEC: \$2,900,000 (proposed in grant)
 - Prologis: \$2,685,120
 - Metro: \$2,000,000



2161 Technology Place - Project Details - Community and Workforce

Community Engagement

- > Prologis Technology Place complex identified in 710 Blueprint - prioritized in top four facilities for site walk
- > CalEnviroscreen: 90th percentile pollution burden; 96th overall percentile

Workforce Development

- > Collaboration with Breathe SoCal for three job placement events; ten scholarships to Rio Hondo
- > Partnership with Jobs For the Future (JFF) on development of digital learning and development program
- > Partnership with Pacific Gateway for community-based job candidate opportunities

ZET Program Principles – Overview

1

Maximize leverage of seed funding

by collaborating with regional partners and funding agencies.

2

Community Engagement

that centers corridor residents and stakeholders throughout the development process.

3

Corridor Community Benefits

by creating economic opportunities, improving air quality, and reducing long-standing health impacts generated by diesel trucks.

4

Coordination

with regional and funding partners, government agencies, and key stakeholders.

5

Workforce Development

that ensures community benefits and access to opportunity through the pursuit and implementation of ZE Technology.

6

Equitable Outcomes

ensured by performance metrics that evaluate sustainable outcomes.

7

Legislative Platform

designed to support the accelerated, equitable deployment of ZE technology by reducing barriers and increasing incentives to adoption.

8

Expeditious Deployment of Resources

to maximize the buying power and benefit of investment while supporting community engagement and effective outreach.

ZET Program Principles – 2161 Technology Place, Long Beach

1

Maximize leverage of seed funding

\$2M ZE Truck Program
\$10M Project
4x Leverage (CEC, MSRC, CalSTA, Prologis)

2

Community Engagement

Identified in LACI 710 Blueprint
Falls within an AB 617 Community; will address with CLC

3

Corridor Community Benefits

Public charging station will benefit smaller operators'

Shared aspect increases near-term utilization for tenants of Prologis

4

Coordination

Working with CEC, LACI, CalSTA, MSRC and Prologis

Project is part of larger Prologis network development

5

Workforce Development

Prologis has thorough workforce development initiative in the larger project to address skills gaps and local hires

6

Equitable Outcomes

Charging infrastructure for smaller fleets; investment in training with Breathe SoCal

7

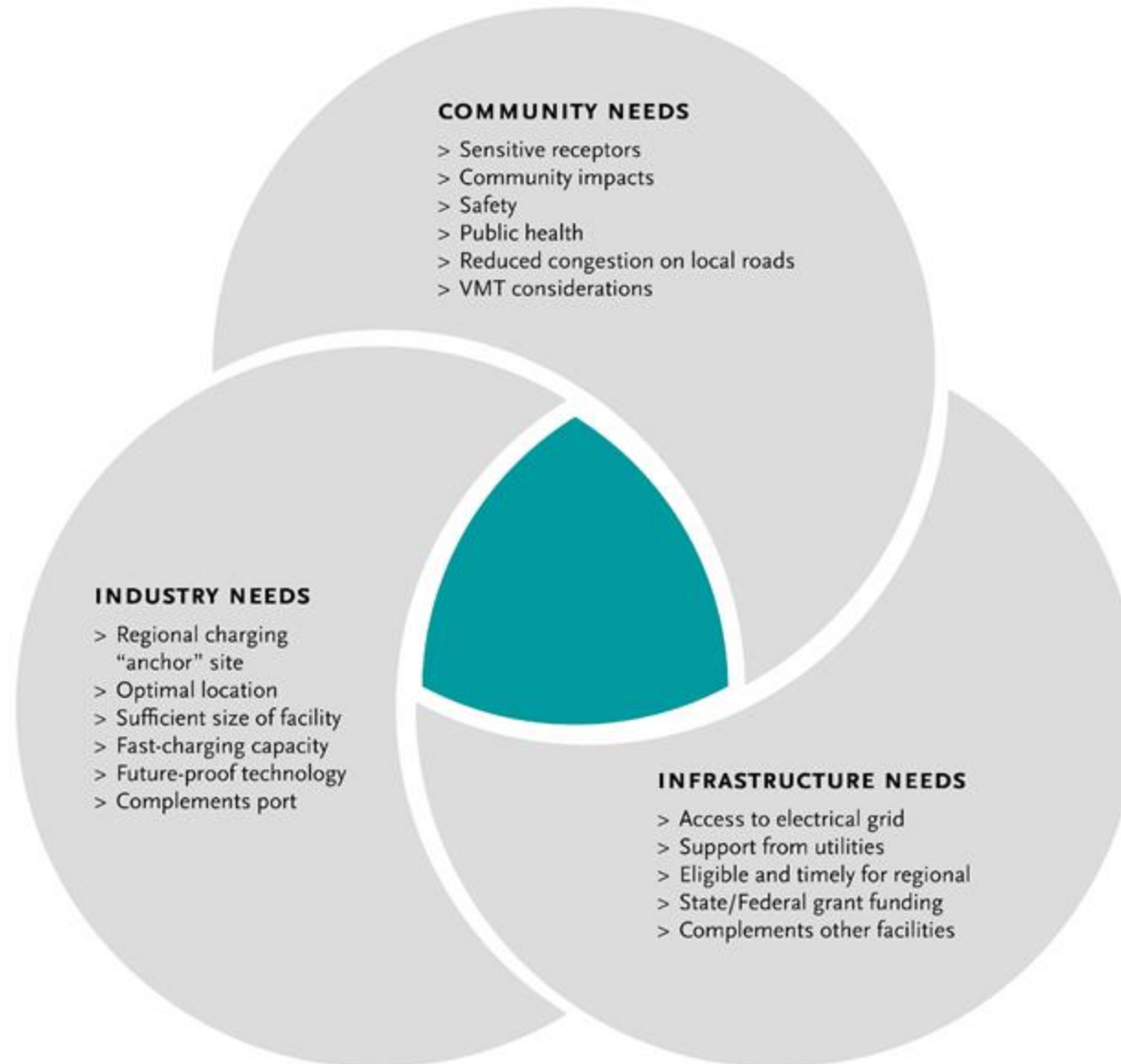
Legislative Platform

Aligns with goals of CTC SB 671 Draft Assessment; can inform Metro's approach to permitting

8

Expeditious Deployment of Resources

Project can move forward with existing deployment plans and committed co-funding in place



- Residential community and Cabrillo High School immediately adjacent to facility
- Directly available off of SR-103 exit coming from POLA/LB (VMT reduction and safety)

- Providing infrastructure for multiple fleets of varying size
- Optimal location for port traffic
- Sufficient size
- Fast-charging capacity with resiliency built-in

- Access to electrical grid
- Ongoing support from utilities
- Storage incorporated
- Part of a larger Prologis charging network
- Sufficient regional/federal funding profile

Prologis' other facilities in 710 Corridor are similarly positioned for Metro funding

Locations:

Commerce, Compton, Vernon

Total Project Costs (three sites):

- \$53,677,000

Total Committed Funding:

- MSRC: \$3,220,611
- CalSTA: \$10,735,370
- Prologis: \$29,721,019

Total Equipment Funded:

128 Charging Dispensers (64 dual port 360kW)

9 MWh Battery energy storage

ZET Principles Alignment

- > Projects incorporate the same investment in community and workforce development
- > Similar industrial/heavy commercial locations near major corridors with the 710 Focus Area
- > Leveraged co-funding from other regional stakeholders

Proposed Next Steps

- > November 13th: CEC grant application due date
- > November 16th: LACI's presentation and test for consensus to the CLC

After the CEC grant award announcement

- > Metro Board approval request on the \$2 million Metro contribution

Working Group Discussion

Funding Support for LACI Proposed Blueprint Implementation

I support LACI's request to commit up to \$2M of the \$50M in seed funding for the LACI's CEC Blueprint Implementation.



Closing Remarks & Next Steps

Upcoming Meeting Schedule

CLC – Virtual Meeting

Thursday, November 16, 5-7pm

Task Force –Small Group Meetings – Virtual Meetings

November 14-17, 27-29

CLC – Virtual Meeting

Thursday, November 30, 5-7pm

Equity Working Group – Virtual Meeting

Thursday, December 7, 5-7pm

Metro Meetings

Executive Committee Meeting

Thursday, November 16, 11am

[Draft Investment Plan - Preview](#)

Board Meeting

Thursday, November 30, 10am

[Draft Investment Plan - Preview](#)

Executive Committee Meeting

Thursday, January 18, 11am

[Draft Investment Plan](#)

Board Meeting

Thursday, January 25, 10am

[Draft Investment Plan](#)

For the most updated list of meeting dates, please visit:

<https://www.metro.net/projects/lb-ela-corridor-plan/>

Stay connected to this project



Michael Cano
Executive Officer
Countywide Planning & Development
LA Metro
One Gateway Plaza, MS 99-13-1
Los Angeles, CA 90012



213.418.3010 W
213.305.0423 C



710corridor@metro.net



<https://www.metro.net/projects/lb-ela-corridor-plan/>



@metrolosangeles



losangelesmetro

Thank you!