

# Welcome!

*We will begin in a few moments.*

**LB-ELA Task Force  
Zero-Emission Truck Working Group  
Meeting #16  
May 23, 2023**

# Working Group Member Identification

1

After launching the Zoom meeting, click on the "Participants" icon at the bottom of the window.

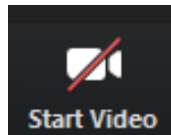


2

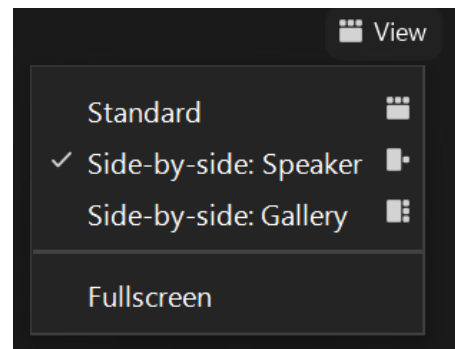
In the "Participants" list on the right side of the Zoom window, hover over your name and click on the "Rename" button.

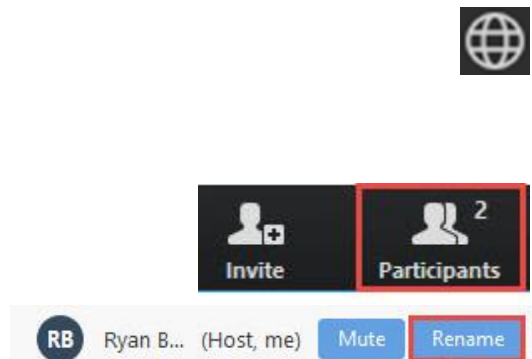
# Turn on Camera

- > To **start** and **stop** your video, click the camera icon at the bottom left of your control panel



- > To switch between views during the meeting click or tap on **Standard**, **Side-by-side Speaker View**, and **Side-by-side Gallery View** at the top right corner of your zoom screen





Click **Interpretation** to choose your language.

- > To hear the interpreted language only, click **Mute Original Audio** (Optional).

Change your Zoom screen name to include name, agency/organization.

- > Click **Raise Hand** in your meeting controls, **Press\*9** on the phone line, or raise your hand physically.
- > To lower your hand, click **Raise Hand** in your meeting controls.
- > The **Q&A** button is located on the control panel at the bottom of your screen.
- > To **mute** and **unmute**, click the microphone icon on the bottom left of your control panel.
- > To **start** and **stop** your video, click the camera icon at the bottom left of your control panel.
- > **Technology & interpretation support:**  
323.609.3345

# Detailed Agenda

**1:00pm**     **Welcome, Agenda Review, and Purpose of the Zero-Emission Truck Working Group**

**1:05pm**     **Agenda Item #1: Metro Update (10 minutes)**

- MSRC Cooperative Agreement
- LACI Program Update
- CFI Grant Submittal Update
- US EPA Request for Information

**1:15pm**     **Agenda Item #2: Scaling Beyond Pilot Projects - Lessons Learned in Developing Charging/Fueling Infrastructure**

Moderator: *Akiko Yamagami, Sr Transportation Manager, Metro*

Panelists:

- *Seungbum Ha, Program Supervisor – Electric & Hybrid Vehicles, South Coast Air Quality Management District*
- *Leela Rao, Environmental Specialist, Port of Long Beach*
- *Jacob Goldberg, Environmental Specialist, Port of Los Angeles*

**1:50pm**     **Agenda Item #3: ZET Program as a Catalyst for Workforce Development & Job Training**

Moderator: *Akiko Yamagami, Sr Transportation Manager, Metro*

Panelists:

- *Dr. Tyler Reeb, Director of Research & Workforce Development Center for International Trade and Transportation (CITT) Cal State University of Long Beach (CSULB)*
- *Jannet Malig, Statewide Director Advanced Transportation & Logistics, Cerritos College; Co-Director, Long Beach Clean Cities*
- *John Frala, Professor Alternative Fuels Technology, Rio Hondo College; Clean Transportation Program Advisor, California Energy Commission*
- *Robert Chavez, Program Manager, South Bay Workforce Investment Board*

**2:50pm**     **Closing Remarks and Upcoming Meetings**

**3:00pm**     **Adjournment**

# Welcome!

*We will begin in a few moments.*

**LB-ELA Task Force  
Zero-Emission Truck Working Group  
Meeting #16  
May 23, 2023**



**Erika C.B. Morales**

Partner, Morales + Morales Partners

**Welcome, Agenda Review, and Purpose**  
*of the*  
**Long Beach – East LA Corridor**  
**Zero-Emission Truck (ZET) Working Group**

# In Memoriam – Rick Cameron



# Detailed Agenda

**1:00pm**     **Welcome, Agenda Review, and Purpose of the Zero-Emission Truck Working Group**

**1:05pm**     **Agenda Item #1: Metro Update (10 minutes)**

- MSRC Cooperative Agreement
- LACI Program Update
- CFI Grant Submittal Update
- US EPA Request for Information

**1:15pm**     **Agenda Item #2: Scaling Beyond Pilot Projects - Lessons Learned in Developing Charging/Fueling Infrastructure**

Moderator: *Akiko Yamagami, Sr Transportation Manager, Metro*

Panelists:

- *Seungbum Ha, Program Supervisor – Electric & Hybrid Vehicles, South Coast Air Quality Management District*
- *Leela Rao, Environmental Specialist, Port of Long Beach*
- *Jacob Goldberg, Environmental Specialist, Port of Los Angeles*

**1:50pm**     **Agenda Item #3: ZET Program as a Catalyst for Workforce Development & Job Training**

Moderator: *Akiko Yamagami, Sr Transportation Manager, Metro*

Panelists:

- *Dr. Tyler Reeb, Director of Research & Workforce Development Center for International Trade and Transportation (CITT) Cal State University of Long Beach (CSULB)*
- *Jannet Malig, Statewide Director Advanced Transportation & Logistics, Cerritos College; Co-Director, Long Beach Clean Cities*
- *John Frala, Professor Alternative Fuels Technology, Rio Hondo College; Clean Transportation Program Advisor, California Energy Commission*
- *Robert Chavez, Program Manager, South Bay Workforce Investment Board*

**2:50pm**     **Closing Remarks and Upcoming Meetings**

**3:00pm**     **Adjournment**

# Meeting Objectives

## During this meeting, the working group will:

- > Hear a panel discussion reviewing lessons learned and key takeaways in scaling and building charging/fueling infrastructure that would support the entire 710 South Corridor.
- > Hear a panel discussion that considers various perspectives and experience with workforce development programs, including how to create and maintain a sufficient workforce, ensure LA County residents reap benefits from these job opportunities, and determine how best to gain community support on these programs.

# Agenda Item #1: Metro Update

# ZET Program Recap – Metro Board Direction

## > **Metro Board Direction and desired outcomes**

- \$200 million minimum funding target
- Leverage Board-approved \$50 million with private, regional, state, and federal funding
- Accelerated ZE deployment in the Long Beach-East LA (LB-ELA, formerly I-710 South) Corridor
- Collaboration with regional stakeholders
- Independent from but aligned with overall LB-ELA Corridor Task Force Investment Plan process

## > **Strategies to accomplish outcomes**

- Convene and collaborate with community and regional stakeholders
- Develop a scope of work for the ZET Program
- Identify regional funding partners
- Identify discretionary grant opportunities
- Identify near and long-term opportunities
- Identify policy and legislative barriers to implementation
- Develop approaches to understanding potential community impacts and creating community benefits

# ZET Meeting #15 Recap

## Summary

- > Held virtually via Zoom on Tuesday, April 25, 2022
- > 22 participants (21 Working Group Members, 1 CLC member)

## Key Takeaways

- > An informal test for consensus was conducted on the staff recommendation to provide up to \$3M in funding for LACI's Proposed Community Project.
  - Several Working Group members said they supported the project
  - There was a concern raised about streamlining CEQA as a potential legislative initiative – staff affirmed that this item would not be included as part of Metro's board action.
  - Staff will take a recommendation to the Metro Board in June to program funding.
- > The Working Group received information on plans for a regionally-coordinated Charging & Fueling Infrastructure Grant application, including how it aligns with ZET Program Principles.
- > The Working Group received a presentation on workforce development frameworks and how to coordinate efforts to develop a framework for the LB-ELA Corridor

# ZET Program Principles – Overview

1

## Maximize leverage of seed funding

by collaborating with regional partners and funding agencies.

2

## Expeditious Deployment of Resources

to maximize the buying power and benefit of investment while supporting community engagement and effective outreach.

3

## Coordination

with regional and funding partners, government agencies, and key stakeholders.

4

## Community Engagement

that centers corridor residents and stakeholders throughout the development process.

5

## Workforce Development

that ensures community benefits and access to opportunity through the pursuit and implementation of ZE Technology.

6

## Corridor Community Benefits

by creating economic opportunities, improving air quality, and reducing long-standing health impacts generated by diesel trucks.

7

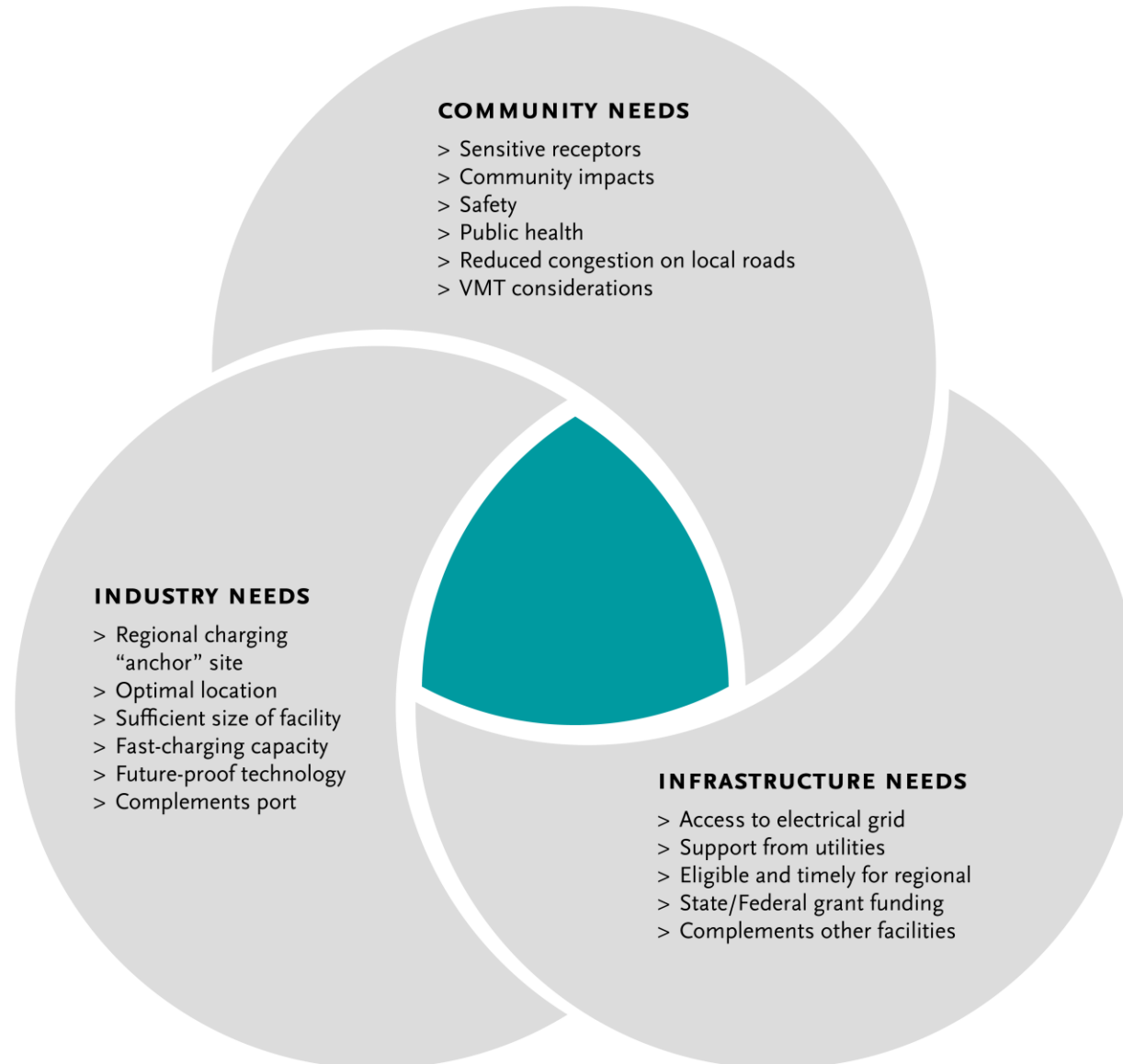
## Equitable Outcomes

ensured by performance metrics that evaluate sustainable outcomes.

8

## Legislative Platform

designed to support the accelerated, equitable deployment of ZE technology by reducing barriers and increasing incentives to adoption.



# Key Findings & Next Steps

<b>Metro Vision for regional ZET charging facilities</b>	<ul style="list-style-type: none"><li>• Public charging station(s) for use primarily by smaller drayage fleets and independent owner/operators, but accessible for all heavy-duty trucks<ul style="list-style-type: none"><li>• Origins and destinations within Southern California</li><li>• Port or transload trips that are clustered in the region</li><li>• Multiple trips per day</li><li>• Access needed for midday opportunity charging</li></ul></li></ul>
<b>Where</b>	<ul style="list-style-type: none"><li>• West of 710, near ports, or along the Alameda Corridor</li></ul>
<b>Next Steps</b>	<ul style="list-style-type: none"><li>• Work with local jurisdictions and logistics/real estate professionals to determine land ownership</li><li>• Coordinate with utilities on current capacity and/or where it needs to be added</li><li>• Map out fueling stations in that area to determine where trucks are already filling up</li><li>• Examine existing truck routes and location of sensitive receptors to align charging facility site(s) with community needs</li><li>• Connect with small fleets/drivers to understand their needs, experience, and opportunities</li><li>• Research grant funding opportunities to assist in pursuing next steps</li></ul>

# US EPA Request for Information (RFI) ZE Heavy-Duty Vehicles and Infrastructure

- > Development of Guidance for Zero-Emission Clean Heavy-Duty Vehicles, Port Equipment, and Fueling Infrastructure Deployment under Inflation Reduction Act Funding Programs
- > EPA especially interested in availability, market price, and performance of ZE trucks, ZE port equipment, and other charging/fueling infrastructure needs in the near term (1-3 years, and 1-5 years for port equipment) and whether components of these systems are manufactured in the US
- > Comment deadline: **June 5, 2023**
- > [More information can be found here](#)

# Agenda Item #2: Scaling Beyond Pilot Projects – Lessons Learned in Developing Charging/Fueling Infrastructure

- i. Introduction
- ii. Panel Discussion
- iii. Working Group Q&A



## **Akiko Yamagami**

Senior Manager,  
Transportation Planning, Goods  
Movement  
*LA Metro*

# Panelists



**Seungbum Ha**

Program Supervisor –  
Electric & Hybrid Vehicles  
*South Coast Air Quality  
Management District*



**Leela Rao**

Environmental Specialist  
*Port of Long Beach*  
LB-ELA CP Task Force Member



**Jacob Goldberg**

Environmental Specialist  
*Port of Los Angeles*

# Facilitated Discussion Questions

- > For your respective projects, you have an impressive list of partners that are technology OEMs, fuel providers, 3PLs and dealerships. Did you have relationships with these entities before the project? If not, how did you identify them and get them involved in your project?
- > What were the challenges and lessons learned from your projects? Do they apply to Metro as we embark on deploying ZE infrastructure corridor-wide?
- > Do you have specific lessons learned that you recommend Metro consider to minimize impacts from ZE trucks accessing these publicly accessible charging or refueling stations?
- > Did your organization track the number of jobs created because of your ZE truck project? If so, could you talk about what type of jobs were created, and who received the job opportunities? What efforts were made to connect local residents to these jobs?

# Agenda Item #3: ZET Program as a Catalyst for Workforce Development & Job Training

- i. Introduction
- ii. Panel Discussion
- iii. Working Group Q&A

**Workforce Development** — that ensures community benefits and access to opportunity through the pursuit and implementation of ZE Technology.

- > Work with regional and community partners to **understand job training and workforce needs** related to ZET.
- > Work with labor partners to pursue **local and targeted hire** opportunities.
- > Increase **community access to quality job opportunities** that pay living wages.
- > Coordinate with **existing workforce development** programs.

# Task 3: Ensure LA County has skilled workforce to support large scale ZE Truck deployment

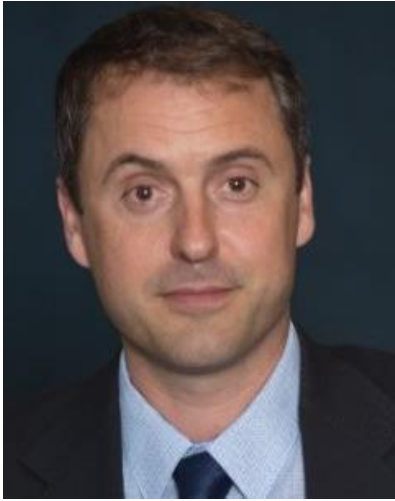
	Objective	Task
3.1	Evaluate various workforce efforts within LA County that are geared towards workers engaged in ZE vehicles and infrastructure	
	3.1.a	Partner with community colleges, and labor leaders to develop ZE-related employment and training programs
	3.1.b	Work with partners to understand the challenges, barriers, and opportunities for ZE-related employment
3.2	Identify Metro's role in supporting workforce investment in support of ZE truck deployment and supporting infrastructure	
	3.2.a	Engage workforce development partners to identify where Metro may add value to support their initiatives
	3.2.b	Explore if there are programs that Metro may develop or support for this endeavor
3.3	Collaborate with partners to establish workforce development outreach strategy	
	3.3.a	Utilize walk-up centers and other outreach mechanisms to discuss employment opportunities with residents

# Demystifying Workforce Investment Mechanisms

## Overview

- > How do we create and maintain a sufficient workforce pool to support ZE truck programs?
- > How do we ensure that LA County residents, particularly corridor residents, reap the benefit of job opportunities presented by ZE truck programs?
- > What are the best ways to engage communities and generate support for such programs?

# Panelists



## **Dr. Tyler Reeb**

Director of Research and Workforce  
Development  
*Center for International Trade and  
Transportation*  
*Cal State University of Long Beach*



## **Jannet Malig**

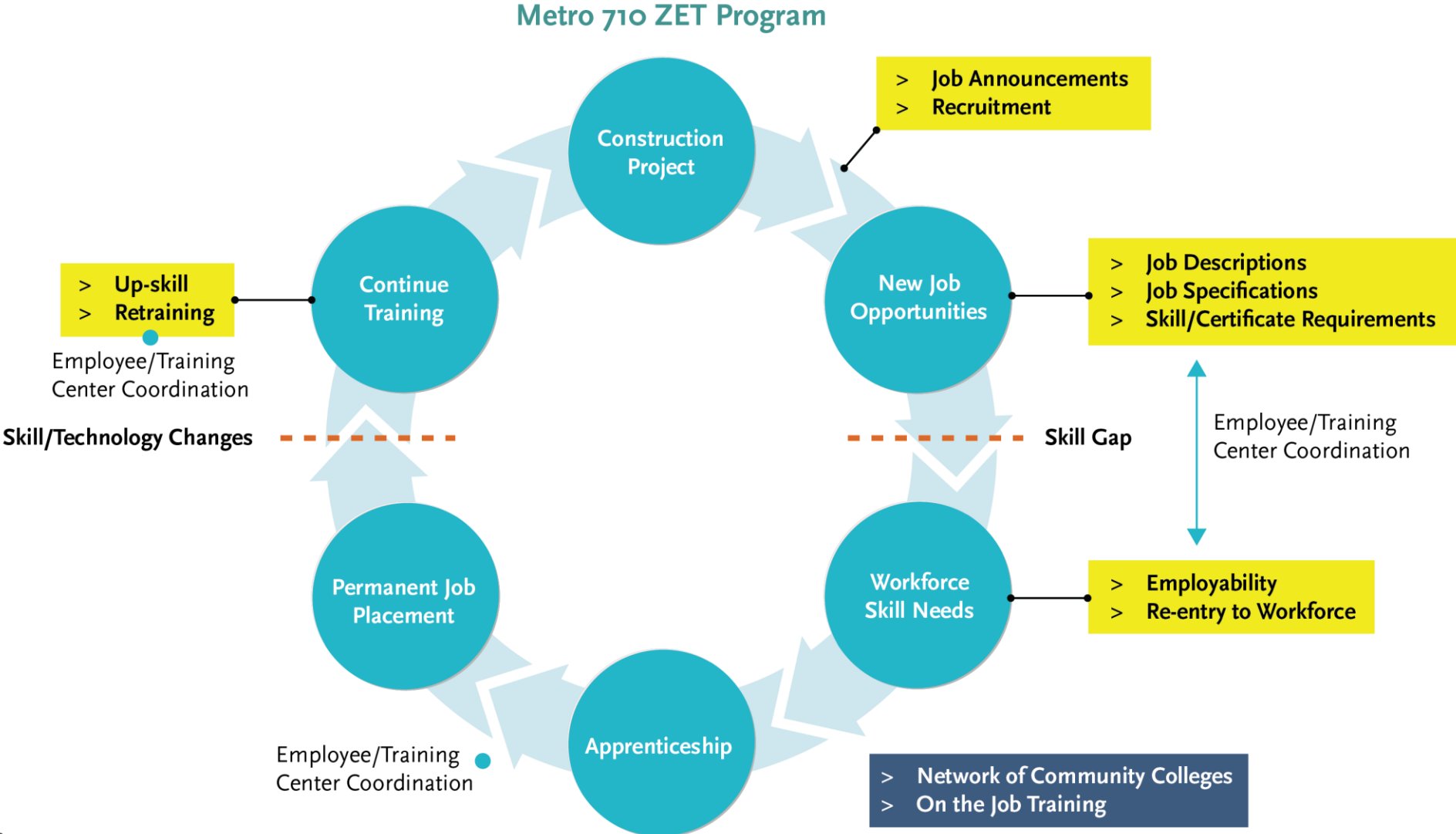
Statewide Director Advanced  
Transportation & Logistics  
*Cerritos College*  
Co-Director  
*Long Beach Clean Cities*



## **John Frala**

Professor Alternative Fuels  
Technology  
*Rio Hondo College*  
Clean Transportation Program  
Advisor  
*California Energy Commission*

# Cycle of Workforce Investment



# Closing Remarks and Next Steps

# Upcoming Meetings and Project Information

## Community Leadership Committee Meeting

- > Meeting #16

*Thursday, June 22, 5-7pm*

## Task Force Meeting

- > Task Force Meeting #21

*Monday, June 12, 5-7pm*

## Working Group Meetings

- > Equity Working Group #13

*Thursday, June 29, 5-7pm*

- > Zero-Emissions Truck Working Group #17

*Tuesday, June 20, 1-3pm*

For the most updated list  
of meeting dates, please visit  
<http://www.metro.net/710-hub>

# Stay connected to this project



Michael Cano  
Executive Officer  
Countywide Planning & Development  
LA Metro  
One Gateway Plaza, MS 99-13-1  
Los Angeles, CA 90012



*213.418.3010 W*  
*213.305.0423 C*



*[710corridor@metro.net](mailto:710corridor@metro.net)*



*<https://www.metro.net/projects/lb-ela-corridor-plan/>*



*@metrolosangeles*



*losangelesmetro*

# In Memoriam – Rick Cameron



**Thank you!**