

Welcome!

We will begin in a few moments.

**LB-ELA Task Force
Zero-Emission Truck Working Group
Meeting #15
April 25, 2023**

Working Group Member Identification

1

After launching the Zoom meeting, click on the "Participants" icon at the bottom of the window.



2

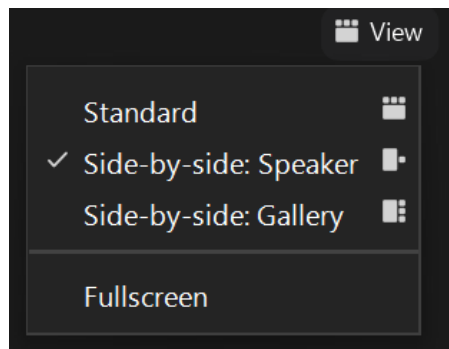
In the "Participants" list on the right side of the Zoom window, hover over your name and click on the "Rename" button.

Turn on Camera

- > To **start** and **stop** your video, click the camera icon at the bottom left of your control panel



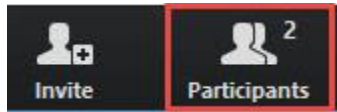
- > To switch between views during the meeting click or tap on **Standard**, **Side-by-side Speaker View**, and **Side-by-side Gallery View** at the top right corner of your zoom screen





Click **Interpretation** to choose your language.

- > To hear the interpreted language only, click **Mute Original Audio** (Optional).



Change your Zoom screen name to include name, agency/organization.



- > Click **Raise Hand** in your meeting controls, **Press*9** on the phone line, or raise your hand physically.
- > To lower your hand, click **Raise Hand** in your meeting controls.
- > The **Q&A** button is located on the control panel at the bottom of your screen.
- > To **mute** and **unmute**, click the microphone icon on the bottom left of your control panel.
- > To **start** and **stop** your video, click the camera icon at the bottom left of your control panel.
- > **Technology & interpretation support:**
323.609.3345

Detailed Agenda

1:00pm **Welcome, Agenda Review, and Purpose of the Zero-Emission Truck Working Group**

1:05pm **Agenda Item #1: Metro Update (10 minutes)**

1:15pm **Agenda Item #2: LACI Project Update**

- i. Introduction & Context
- ii. LACI Update
- iii. Test for Consensus

1:35pm **Agenda Item #3: U.S. DOT Charging & Fueling Infrastructure Grant Opportunity**

- i. Presentation (15 mins)
- ii. Working Group Discussion (5 mins)

1:55pm **Agenda Item #4: Workforce Development in ZE Infrastructure Deployment**

Dr. Tyler Reeb

*Director of Research and Workforce Development
Center for International Trade and Transportation (CITT)
Cal State University of Long Beach (CSULB)*

- i. Introduction (5 mins)
- ii. Overview – Tyler Reeb (15 mins)
- iii. Working Group Discussion (10 mins)

2:25pm **Closing Remarks and Upcoming Meetings**

2:30pm **Adjournment**

Welcome!

We will begin in a few moments.

**LB-ELA Task Force
Zero-Emission Truck Working Group
Meeting #15
April 25, 2023**



Erika C.B. Morales

Partner, Morales + Morales Partners

Welcome, Agenda Review, and Purpose
of the
Zero-Emission Truck (ZET) Working Group

Detailed Agenda

1:00pm **Welcome, Agenda Review, and Purpose of the Zero-Emission Truck Working Group**

1:05pm **Agenda Item #1: Metro Update (10 minutes)**

1:15pm **Agenda Item #2: LACI Project Update**

- i. Introduction & Context
- ii. LACI Update
- iii. Test for Consensus

1:35pm **Agenda Item #3: U.S. DOT Charging & Fueling Infrastructure Grant Opportunity**

- i. Presentation (15 mins)
- ii. Working Group Discussion (5 mins)

1:55pm **Agenda Item #4: Workforce Development in ZE Infrastructure Deployment**

Dr. Tyler Reeb

*Director of Research and Workforce Development
Center for International Trade and Transportation (CITT)
Cal State University of Long Beach (CSULB)*

- i. Introduction (5 mins)
- ii. Overview – Tyler Reeb (15 mins)
- iii. Working Group Discussion (10 mins)

2:25pm **Closing Remarks and Upcoming Meetings**

2:30pm **Adjournment**

Meeting Objectives

During this meeting, the working group will:

- > Receive status report on LACI's Community Project Funding Request
- > Participate in a Test for Consensus on the staff recommendation for the funding request
- > Learn about a federal discretionary grant opportunity and regional and state efforts to advance charging and fueling infrastructure
- > Receive a presentation on workforce development and discuss how Metro and its partners can create opportunities for residents to gain skills and training on new technologies as well as targeted local hire on ZET infrastructure development

Agenda Item #1: Metro Update

ZET Program Recap – Metro Board Direction

> **Metro Board Direction and desired outcomes**

- \$200 million minimum funding target
- Leverage \$50 million local matches with private, regional, state, and federal funding
- Accelerated ZE deployment in the I-710 South (now Long Beach-East LA) Corridor
- Collaboration with regional stakeholders
- Independent, accelerated process from overall 710 (LB-ELA) Task Force Investment Plan process

> **Strategies to accomplish outcomes**

- Identify discretionary grant opportunities
- Convene and collaborate with community and regional stakeholders
- Develop a scope of work for the ZET Program
- Identify regional funding partners
- Identify near and long-term opportunities
- Identify policy and legislative barriers to implementation

ZET Meeting #14 Recap

Summary

- > Held virtually via Zoom on Tuesday, March 21, 2022
- > 28 participants (25 Working Group Members, 3 CLC members)

Key Takeaways

- > LACI's Proposed Community Project aligns with ZET Program principles and Metro's vision for regional MD/HD charging facilities. Concerns expressed included:
 - Ensuring that the charging stations do not cause harm to surrounding neighborhoods
 - Local hire program for the project
- > Mobile Source Reduction Committee's RFI Results aligns with the ZET Program principles. Next steps included:
 - Working with MSRC to gather more information on proposed projects
 - Conducting community engagement and outlining local hire targets
 - Verifying proposed schedules, permitting, and energy reliability

ZET Program Principles – Overview

1

Maximize leverage of seed funding

by collaborating with regional partners and funding agencies.

2

Expeditious Deployment of Resources

to maximize the buying power and benefit of investment while supporting community engagement and effective outreach.

3

Coordination

with regional and funding partners, government agencies, and key stakeholders.

4

Community Engagement

that centers corridor residents and stakeholders throughout the development process.

5

Workforce Development

that ensures community benefits and access to opportunity through the pursuit and implementation of ZE Technology.

6

Corridor Community Benefits

by creating economic opportunities, improving air quality, and reducing long-standing health impacts generated by diesel trucks.

7

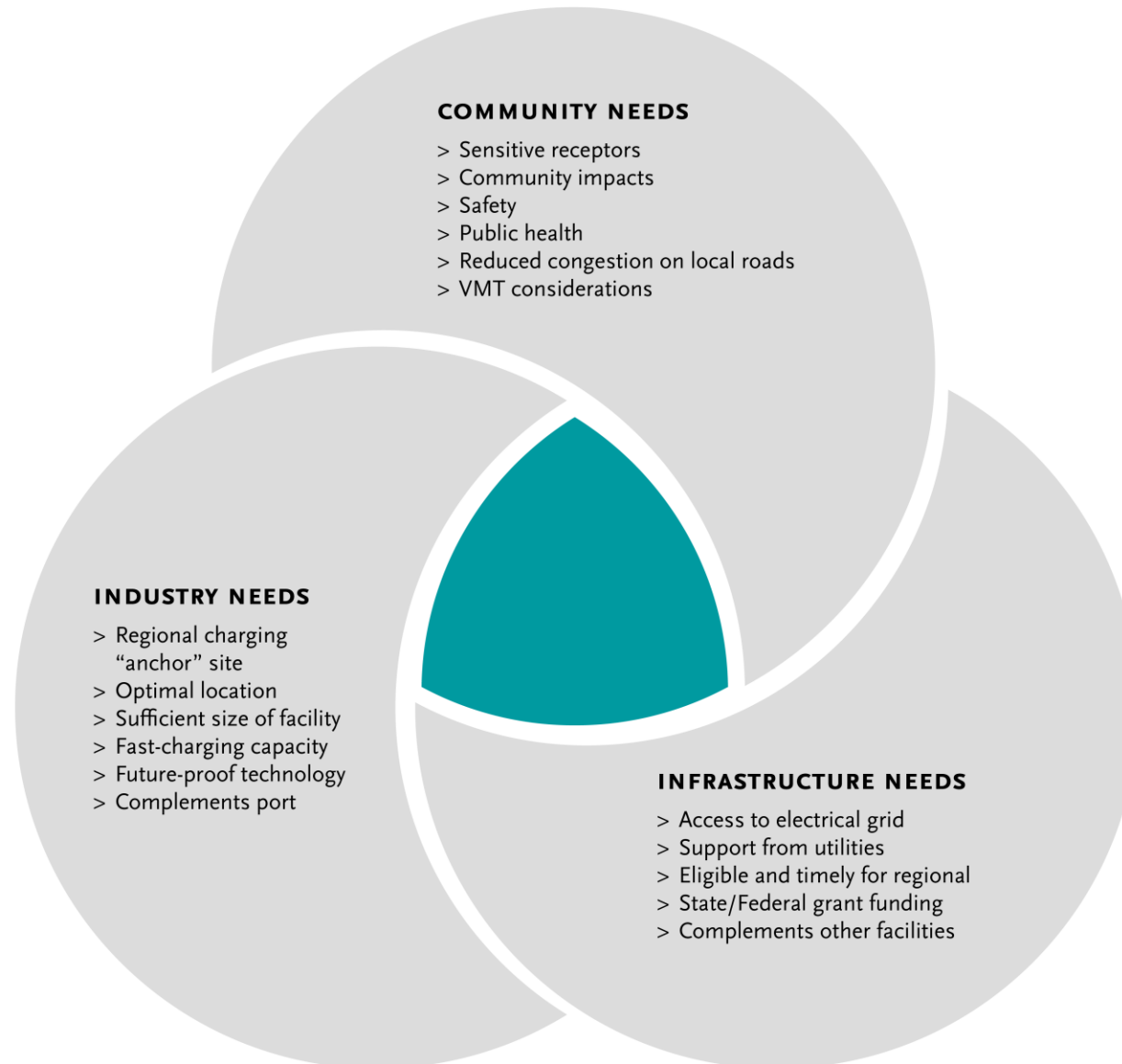
Equitable Outcomes

ensured by performance metrics that evaluate sustainable outcomes.

8

Legislative Platform

designed to support the accelerated, equitable deployment of ZE technology by reducing barriers and increasing incentives to adoption.



Key Findings & Next Steps

Metro Vision for regional ZET charging facilities	<ul style="list-style-type: none">• Public charging station(s) for use primarily by smaller drayage fleets and independent owner/operators, but accessible for all heavy-duty trucks<ul style="list-style-type: none">• Origins and destinations within Southern California• Port or transload trips that are clustered in the region• Multiple trips per day• Access needed for midday opportunity charging
Where	<ul style="list-style-type: none">• West of 710, near ports, or along the Alameda Corridor
Next Steps	<ul style="list-style-type: none">• Work with local jurisdictions and logistics/real estate professionals to determine land ownership• Coordinate with utilities on current capacity and/or where it needs to be added• Map out fueling stations in that area to determine where trucks are already filling up• Examine existing truck routes and location of sensitive receptors to align charging facility site(s) with community needs• Connect with small fleets/drivers to understand their needs, experience, and opportunities• Research grant funding opportunities to assist in pursuing next steps

Agenda Item #2: LACI Project Update

- i. Introduction
- ii. Working Group Discussion (10 mins)

LACI Proposed LB-ELA Corridor Charging Project

- > LACI submitted a Community Project Funding request for \$1.5M to Congresswoman Nanette Barragan (CA-44) in May 2022; awarded January 2023
 - Outlined role \$1.5M can play in catalyzing other regional agencies to fund a \$15M truck charging station
- > Per Community Project Funding guidelines, project must occur on publicly-held land and provide public benefit
- > Proposed sites
 - 1519 East I Street
 - 816 N Lansing Avenue, Wilmington CA 90744
 - (either side of East I St. between Alameda St. and Henry Ford Ave)
- > Project aligns with Metro's goals for ZE Truck Program Investment
 - Opportunity to partner on regional collaboration and begin ZE Truck Program investments with small funding commitment (\$3M)

ZET Program Principles – 1519 East I St, Wilmington CA 90744

1

Maximize leverage of seed funding

\$3M ZE Truck Program
\$15M Project
4x Leverage (POLA, Federal, Private Sector)

2

Expeditious Deployment of Resources

Project can move forward to selecting a private sector operator by year-end. Federal funding catalyzing other partners to action

3

Coordination

Working with POLA, LACI, Dept. of Housing and Urban Development, LADWP (potentially MSRC)

4

Community Engagement

Identified in LACI 710 Blueprint
Falls within an AB 617 Community; will address with CLC

5

Workforce Development

Can meet Metro's local hire requirements; potential to integrate other regional workforce programs into pipeline

6

Corridor Community Benefits

Public charging station will benefit smaller operators transition to ZE

7

Equitable Outcomes

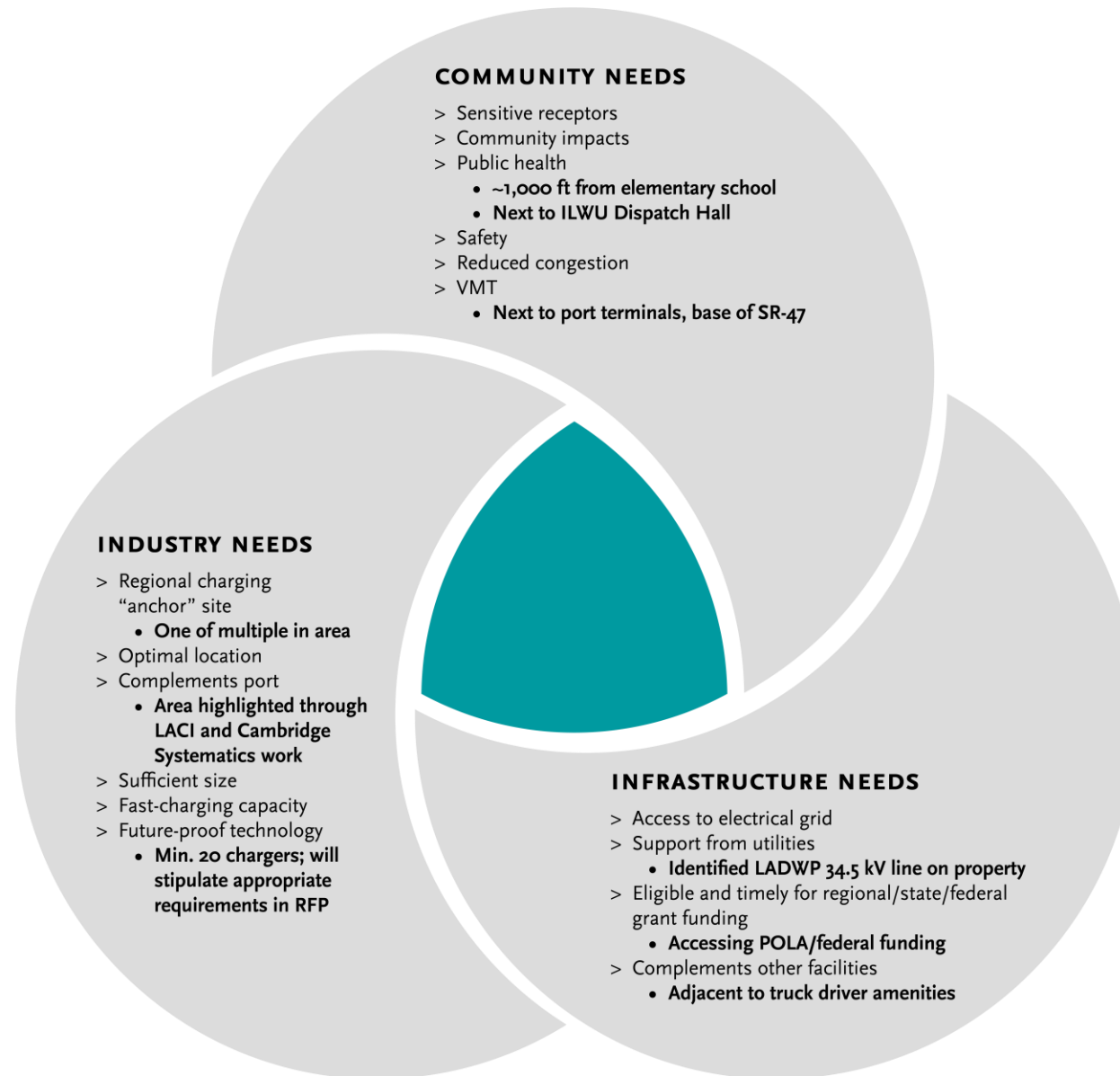
Can determine appropriate metrics to evaluate within Task Force, CLC and working groups

8

Legislative Platform

Project can identify how to fine-tune CEQA to deploy infrastructure expeditiously while maintaining environmental standards

Metro



LACI Proposed LB-ELA Corridor Charging Project Funding Request Update

- > Metro/LACI briefed the Zero-Emissions Truck Working Group at its March meeting. Input from Working Group members included:
 - Ensuring that the charging stations do not cause harm to surrounding neighborhoods
 - Requesting more information on local hiring for the project
- > Metro/LACI briefed the Community Leadership Committee (CLC) on 3/27 and Equity Working Group (EWG) on 3/30 on the project and no new concerns were raised.
- > The Metro Board will consider staff recommendation to allocate \$3M from the Board's overall commitment of \$50M in seed funding to support the LACI project.

Funding Support for LACI Proposed LB-ELA Corridor Charging Project

I support the staff recommendation to commit up to \$3M of the \$50M in seed funding for the LACI Community Project.



Agenda Item #3: U.S. DOT Charging & Fueling Infrastructure Grant Opportunity

- i. Presentation
- ii. Working Group Discussion

Charging & Fueling Infrastructure (CFI) Grant Opportunity

Overview

- > CFI Discretionary Grant Program established by the Bipartisan Infrastructure Law
- > Notice of Funding Opportunity released early March 2023
- > Provides \$2.5 billion over five years
- > Current round of funding from fiscal years 2022 and 2023 is \$700 million
 1. \$350 million for the Community Charging and Fueling Program
 2. \$350 million for the Alternative Fuel Corridor Grants
 - > Intended to support buildout of charging or fueling infrastructure along designated Alternative Fuel Corridors (AFCs)
- > Applications due May 30, 2023

Charging & Fueling Infrastructure (CFI) Grant Opportunity

Regional and State Coordination

- > Opportunity to communicate to the federal government on the massive funding needs to realize zero-emission goods movement corridors
- > One statewide application that includes I-710 ZET Program
- > Partner agencies for the FY22 & FY23 funding cycle
 - > California Energy Commission
 - > Caltrans
 - > LA Cleantech Incubator
 - > Ports of Los Angeles & Long Beach
 - > Southern California Association of Governments
 - > South Coast Air Quality Management District

CFI Alignment with ZET Program Principles

1

Maximize leverage of seed funding

On-going collaboration with the state and regional agencies

2

Expeditious Deployment of Resources

Criterion #5: CFI Program Vision – expand deployment of public charging and fueling infrastructure

3

Coordination

On-going collaboration with the state and regional agencies to pursue this funding opportunity

4

Community Engagement

Criterion #3: Equity, Community Engagement and Justice 40

5

Workforce Development

Criterion #4: Workforce Development, Job Quality, and Wealth Creation

6

Corridor Community Benefits

Criterion #1: Safety
Criterion #2: Climate Change, Resilience and Sustainability
Criterion #3 and Criterion #4

7

Equitable Outcomes

Criterion #3 evaluation includes an equity analysis and assessment to ensure proportional impacts and removal of transportation related disparities to all populations in a project area

8

Legislative Platform

Communicate the magnitude of investment needs to the federal government

Next Steps

- > Weekly coordination calls to develop the statewide application with partner agencies
 - > Develop compelling narrative to highlight the knowledge and efforts made by this group, regional and state partners
 - > Clarify agency roles and responsibilities
- > Application due date: May 30, 2023

Looking Beyond CFI

- > Prepare for other state and federal funding opportunities
- > Work closely with MSRC and Southern California partners to further detail out the 710 ZET Program rollout plan

Agenda Item #4: Workforce Development for ZE Infrastructure Expenditure

- i. Introduction
- ii. Panel Discussion (10 mins)
- iii. Working Group Discussion (10 mins)

Workforce Development — that ensures community benefits and access to opportunity through the pursuit and implementation of ZE Technology.

- > Work with regional and community partners to **understand job training and workforce needs** related to ZET.
- > Work with labor partners to pursue **local and targeted hire** opportunities.
- > Increase **community access to quality job opportunities** that pay living wages.
- > Coordinate with **existing workforce development** programs.



Dr. Tyler Reeb

Director of Research and Workforce
Development

Center for International Trade and
Transportation

Cal State University of Long Beach

Sustainable Freight Foundations Pilot Findings

Developed by
California State University, Long Beach
Center for International Trade and Transportation (CITT)

*In partnership with the California Energy Commission
and the
Governor's Office of Business and Economic Development*



Principal Research Questions:

- **What are sustainable freight jobs?**
- **Where are the workforce training and education gaps?**
- **What are the competencies required by employers to address these gaps?**
- **What is the structure of training that responds most effectively to these competencies?**

Research Methodology: Continual Refinement of Competencies

Solicited input from industry associations and working groups;
Burning Glass research; webinars; industry publications

Gathered feedback from industry and education/training
partners using SurveyMonkey

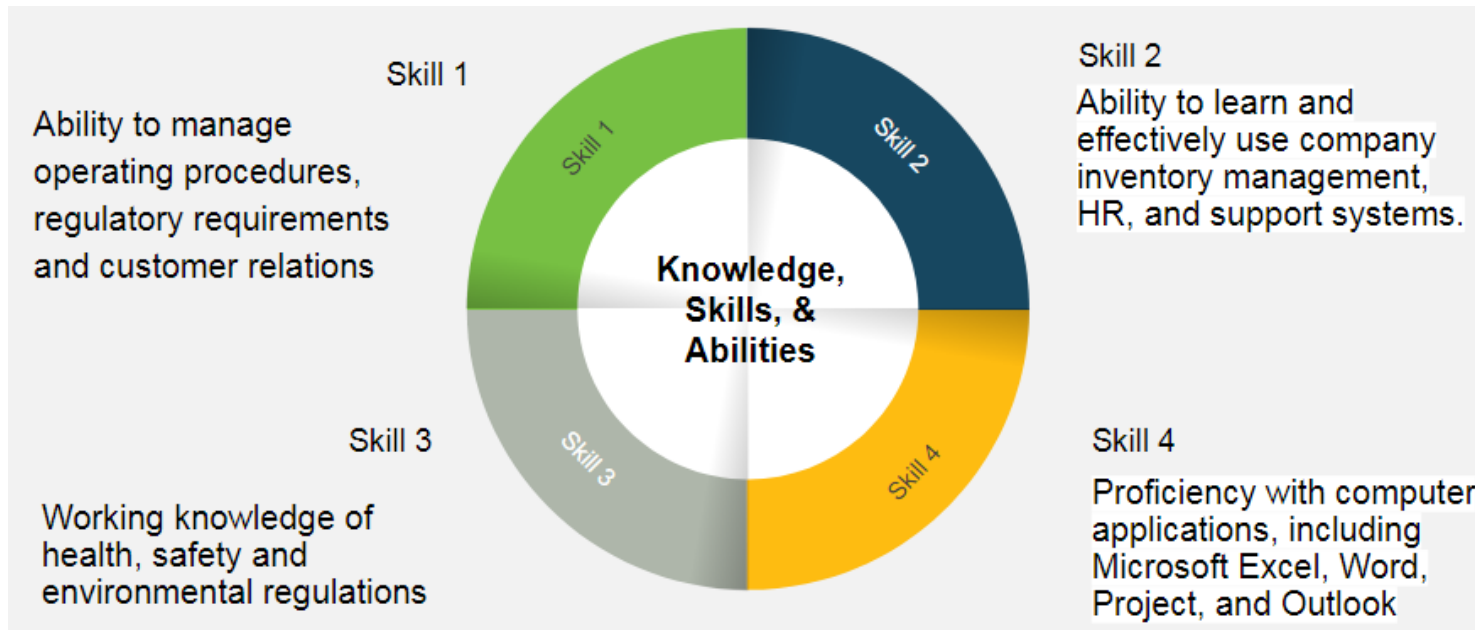
Conducted on-site visits to employers and in-depth interviews

Reviewed job postings

Surveyed participants throughout the course of the pilot

Example of Target Occupation: Terminal Manager - Job Posting

Description: Provides integrated terminaling, storage, transportation and related services for customers engaged in the distribution and marketing of light refined petroleum products, heavy refined petroleum products, crude oil, chemicals, fertilizers and other liquid products.





Targeted Industry Sectors

Drayage

Trucking

Rail

Manufacturers
(OEMs)

Distribution
and
Warehousing

Transloading
Facilities

Freight
Forwarders

Terminals



Targeted Middle Management Occupational Titles (Current list is over 100 job titles)

Fleet Managers

Facilities Managers

Transportation Specialists

Safety and Security Operations Managers
(Safety, Security, and Environmental
Compliance Managers)

Freight Managers

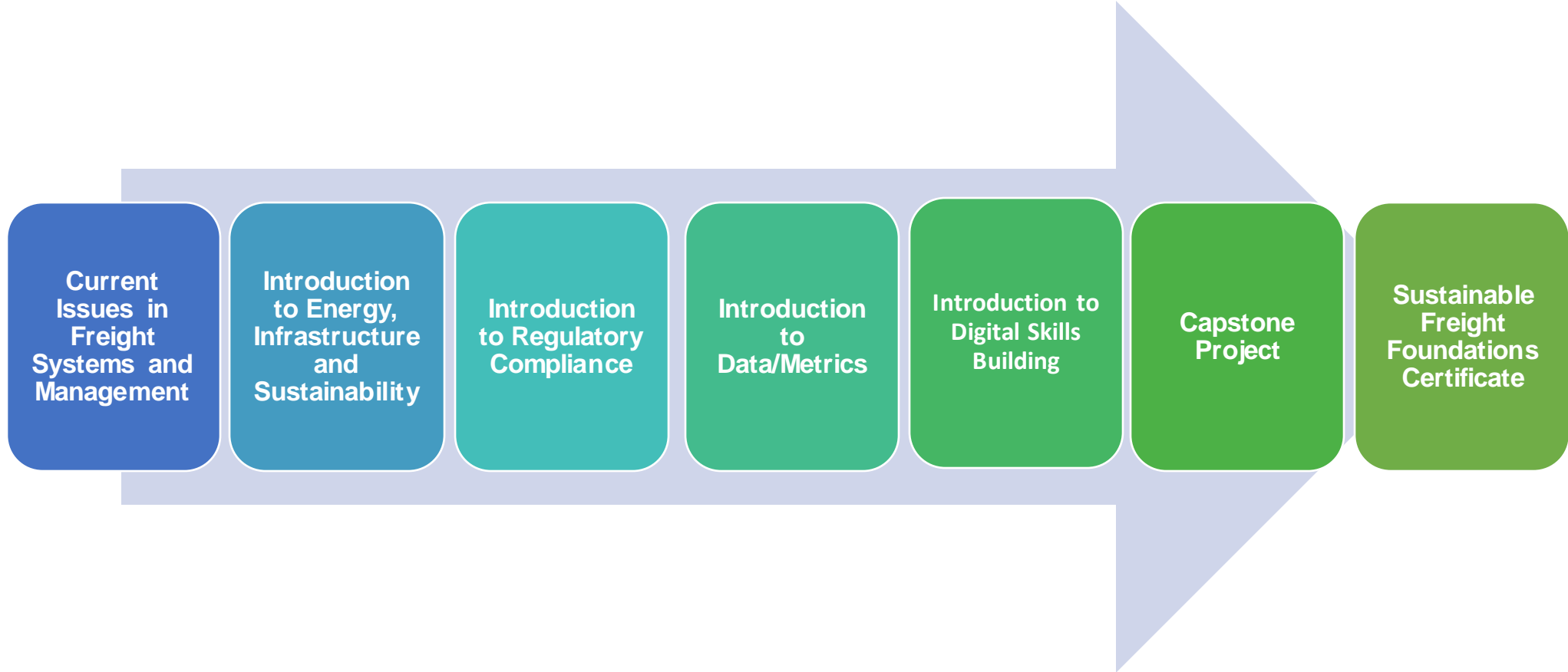
Environmental and Land Use
Planners

Documentation Managers

Compliance Managers



Research Findings: Workforce Needs





Participants reported new skill sets learned were used in their establishments to:

“Plan for installing new charging stations”

“Purchase new equipment”

“ID problem areas in operations using KPIs”

“Develop KPIs”

“Respond to company’s regulatory compliance needs”

“Build fluency with business aspects”

“Write/revise legal contracts (shifting risk)”

“Develop competitive and critical skills (particularly during this economic downturn)”

“Prepare for roles not yet defined in the sustainable freight landscape”

Participants reported they acquired the following skill sets/competencies:

Useful Frameworks for Workforce Development Partnerships



Developmental Evaluation and the partnership continuum.



Useful Frameworks for Workforce Development Partnerships

The Five Conditions of Collective Impact

Common Agenda	All participants have a shared vision for change including a common understanding of the problem and a joint approach to solving it through agreed upon actions.
Shared Measurement	Collecting data and measuring results consistently across all participants ensures efforts remain aligned and participants hold each other accountable.
Mutually Reinforcing Activities	Participant activities must be differentiated while still being coordinated through a mutually reinforcing plan of action.
Continuous Communication	Consistent and open communication is needed across the many players to build trust, assure mutual objectives, and create common motivation.
Backbone Support	Creating and managing collective impact requires a separate organization(s) with staff and a specific set of skills to serve as the backbone for the entire initiative and coordinate participating organizations and agencies.

Discussion/Q&A

What is your biggest workforce development challenge?

How would you define the term “community readiness” in terms of workforce development?

Workforce Development for ZE Infrastructure Expenditure – Introductory Topics

- > How can Metro and its partners create opportunities for residents to gain skills and training on new technologies?*
- > What is Metro's role in working with its regional partners on a targeted local hire program for ZET infrastructure development?*
- > Who are the regional partners Metro should engage in developing a targeted local hire program?*

Closing Remarks and Next Steps

Upcoming Meetings and Project Information

Community Leadership Committee Meeting

- > Meeting #15

Thursday, May 18, 5-7pm

Task Force Meeting

- > Task Force Meeting #20

Monday, May 1, 5-7pm

- > Task Force Meeting #20.5

Monday, May 8, 5-7pm

Working Group Meetings

- > Equity Working Group #12

Thursday, April 27, 5-7pm

- > Zero-Emissions Truck Working Group #16

Tuesday, May 16, 1-3pm

For the most updated list
of meeting dates, please visit
<http://www.metro.net/710-hub>

Stay connected to this project



Michael Cano
Executive Officer
Countywide Planning & Development
LA Metro
One Gateway Plaza, MS 99-13-1
Los Angeles, CA 90012



213.418.3010 W
213.305.0423 C



[*710corridor@metro.net*](mailto:710corridor@metro.net)



[*https://www.metro.net/projects/lb-ela-corridor-plan/*](https://www.metro.net/projects/lb-ela-corridor-plan/)



@metrolosangeles



losangelesmetro

Thank you!