

Welcome!

We will begin in a few moments.

**LB-ELA Task Force
Zero-Emission Truck Working Group
Meeting #14
March 21, 2023**

Working Group Member Identification

1

After launching the Zoom meeting, click on the "Participants" icon at the bottom of the window.



2

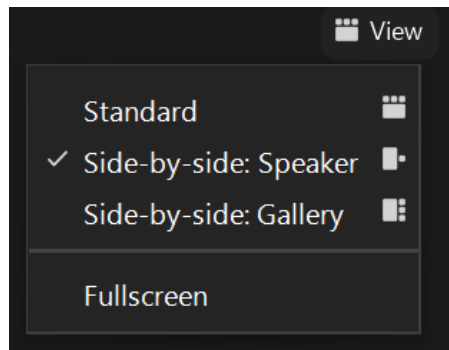
In the "Participants" list on the right side of the Zoom window, hover over your name and click on the "Rename" button.

Turn on Camera

- > To **start** and **stop** your video, click the camera icon at the bottom left of your control panel



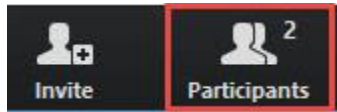
- > To switch between views during the meeting click or tap on **Standard**, **Side-by-side Speaker View**, and **Side-by-side Gallery View** at the top right corner of your zoom screen



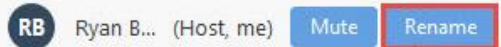


Click **Interpretation** to choose your language.

- > To hear the interpreted language only, click **Mute Original Audio** (Optional).



Change your Zoom screen name to include name, agency/organization.



- > Click **Raise Hand** in your meeting controls, **Press*9** on the phone line, or raise your hand physically.
- > To lower your hand, click **Raise Hand** in your meeting controls.
- > The **Q&A** button is located on the control panel at the bottom of your screen.
- > To **mute** and **unmute**, click the microphone icon on the bottom left of your control panel.
- > To **start** and **stop** your video, click the camera icon at the bottom left of your control panel.
- > **Technology & interpretation support:**
323.609.3345

Detailed Agenda

1:00pm **Welcome, Agenda Review, and Purpose of the Zero-Emission Truck Working Group**

1:05pm **Agenda Item #1: Metro Update** (10 minutes)

1:15pm **Agenda Item #2: LACI's Community Project Funding Award for a Drayage Truck Charging Station**

Presentation by Jack Symington, Senior Program Manager, LACI

- i. Presentation (10 mins)
- ii. Working Group Discussion (20 mins)

1:45pm **Agenda Item #3: Mobile Source Reduction Committee RFI Results**

Presentation by Akiko Yamagami, Transportation Planning Manager, Goods Movement Planning, Metro

- i. Presentation (10 mins)
- ii. Working Group Discussion (10 mins)

2:05pm **Agenda Item #4: First to Last Mile: Creating an Integrated Goods Movement Charging Network around the I-710 Corridor** (15 minutes)

Presentation by Jack Symington, Senior Program Manager, LACI

- i. Presentation (10 mins)
- ii. Task Force Discussion (5 mins)

2:20pm **Closing Remarks and Upcoming Meetings**

2:30pm **Adjournment**

Welcome!

We will begin in a few moments.

**LB-ELA Task Force
Zero-Emission Truck Working Group
Meeting #14
March 21, 2023**



Erika C.B. Morales

Partner, Morales + Morales Partners

Welcome, Agenda Review, and Purpose
of the
Zero-Emission Truck (ZET) Working Group

Detailed Agenda

1:00pm **Welcome, Agenda Review, and Purpose of the Zero-Emission Truck Working Group**

1:05pm **Agenda Item #1: Metro Update** (10 minutes)

1:15pm **Agenda Item #2: LACI's Community Project Funding Award for a Drayage Truck Charging Station**

Presentation by Jack Symington, Senior Program Manager, LACI

- i. Presentation (10 mins)
- ii. Working Group Discussion (20 mins)

1:45pm **Agenda Item #3: Mobile Source Reduction Committee RFI Results**

Presentation by Akiko Yamagami, Transportation Planning Manager, Goods Movement Planning, Metro

- i. Presentation (10 mins)
- ii. Working Group Discussion (10 mins)

2:05pm **Agenda Item #4: First to Last Mile: Creating an Integrated Goods Movement Charging Network around the I-710 Corridor** (15 minutes)

Presentation by Jack Symington, Senior Program Manager, LACI

- i. Presentation (10 mins)
- ii. Task Force Discussion (5 mins)

2:20pm **Closing Remarks and Upcoming Meetings**

2:30pm **Adjournment**

Meeting Objectives

During this meeting, the working group will:

- > Receive information on LACI's Community Project Funding Award for a drayage truck charging station
- > Participate in a discussion on support for regional and local partners
- > Discuss results from the Mobile Source Reduction Committee's recent RFI outlining potential sites for charging infrastructure
- > Discuss funding opportunities for the advancement of ZE infrastructure in the corridor

Agenda Item #1: Metro Update

ZET Program Recap – Metro Board Direction

> **Metro Board Direction and desired outcomes**

- \$200 million minimum funding target
- Leverage \$50 million local matches with private, regional, state, and federal funding
- Accelerated ZE deployment in the I-710 South (now Long Beach-East LA) Corridor
- Collaboration with regional stakeholders
- Independent, accelerated process from overall 710 (LB-ELA) Task Force Investment Plan process

> **Strategies to accomplish outcomes**

- Identify discretionary grant opportunities
- Convene and collaborate with community and regional stakeholders
- Develop a scope of work for the ZET Program
- Identify regional funding partners
- Identify near and long-term opportunities
- Identify policy and legislative barriers to implementation

ZET Meeting #13 Recap

Summary

- > Held virtually via Zoom on Tuesday, February 21, 2022
- > 25 participants (21 Participants, 4 CLC members)

Key Takeaways

- > Determined next steps to implement Metro's Vision for regional charging facilities, including identifying a polygon of potential locations for facilities, determining land ownership, coordinating with utilities, mapping out existing truck movements, and identifying sensitive receptors.
- > Metro to determine funding opportunities on the horizon, to include several opportunities with immediate funding to support ZET
- > Metro to consider conducting a focus group with small fleets and truck operators to gain an understanding of their perspective

ZET Program Principles – Overview

1

Maximize leverage of seed funding

by collaborating with regional partners and funding agencies.

2

Expeditious Deployment of Resources

to maximize the buying power and benefit of investment while supporting community engagement and effective outreach.

3

Coordination

with regional and funding partners, government agencies, and key stakeholders.

4

Community Engagement

that centers corridor residents and stakeholders throughout the development process.

5

Workforce Development

that ensures community benefits and access to opportunity through the pursuit and implementation of ZE Technology.

6

Corridor Community Benefits

by creating economic opportunities, improving air quality, and reducing long-standing health impacts generated by diesel trucks.

7

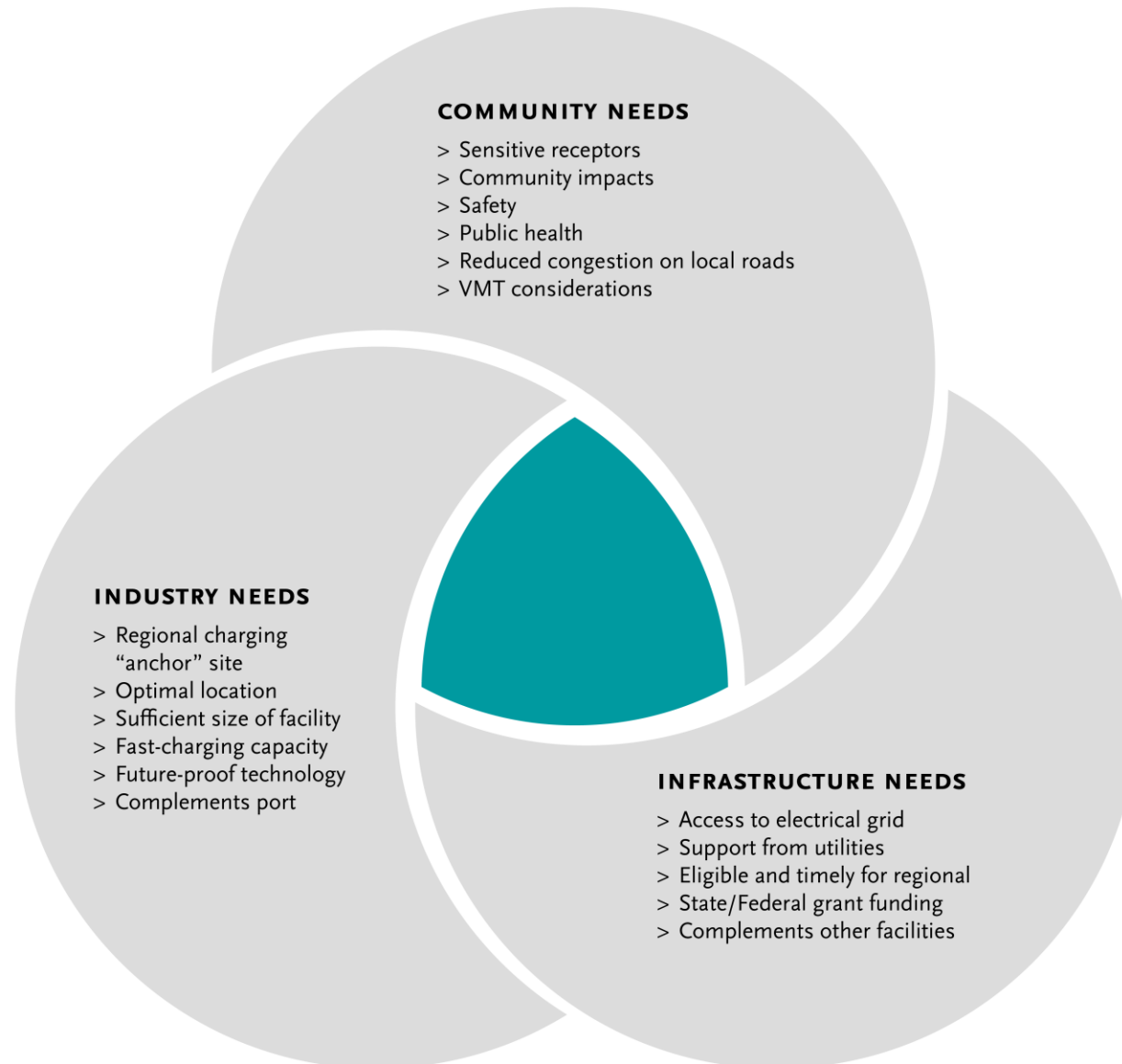
Equitable Outcomes

ensured by performance metrics that evaluate sustainable outcomes.

8

Legislative Platform

designed to support the accelerated, equitable deployment of ZE technology by reducing barriers and increasing incentives to adoption.



Key Findings & Next Steps

Metro Vision for regional ZET charging facilities	<ul style="list-style-type: none">• Public charging station(s) for use primarily by smaller drayage fleets and independent owner/operators, but accessible for all heavy-duty trucks<ul style="list-style-type: none">• Origins and destinations within Southern California• Port or transload trips that are clustered in the region• Multiple trips per day• Access needed for midday opportunity charging
Where	<ul style="list-style-type: none">• West of 710, near ports, or along the Alameda Corridor
Next Steps	<ul style="list-style-type: none">• Work with local jurisdictions and logistics/real estate professionals to determine land ownership• Coordinate with utilities on current capacity and/or where it needs to be added• Map out fueling stations in that area to determine where trucks are already filling up• Examine existing truck routes and location of sensitive receptors to align charging facility site(s) with community needs• Connect with small fleets/drivers to understand their needs, experience, and opportunities• Research grant funding opportunities to assist in pursuing next steps

Agenda Item #2: Los Angeles Cleantech Incubator's (LACI) Community Project Funding Award for a Drayage Truck Charging Station

*Presentation by: Jack Symington,
Senior Program Manager, LACI*

- i. Presentation
- ii. Discussion



Jack Symington
Senior Program Manager
Los Angeles Cleantech Incubator

LACI Proposed LB-ELA Corridor Charging Project

- > LACI submitted a Community Project Funding request for \$1.5M to Congresswoman Nanette Barragan (CA-44) in May 2022; awarded January 2023
 - Outlined role \$1.5M can play in catalyzing other regional agencies to fund a \$15M truck charging station
- > Per Community Project Funding guidelines, project must occur on publicly-held land and provide public benefit
- > Proposed sites are 1519 East I St and 816 N Lansing Ave, Wilmington CA 90744 (either side of East I St. between Alameda St. and Henry Ford Ave)
- > Project aligns with Metro's goals for ZE Truck Program Investment
 - Opportunity to partner on regional collaboration and begin ZE Truck Program investments with small funding commitment (\$3M)

ZET Program Principles – 1519 East I St, Wilmington CA 90744

1

Maximize leverage of seed funding

\$3M ZE Truck Program
\$15M Project
4x Leverage (POLA, Federal, Private Sector)

2

Community Engagement

Identified in LACI 710 Blueprint
Falls within an AB 617 Community; will address with CLC

3

Corridor Community Benefits

Public charging station will benefit smaller operators transition to ZE

4

Coordination

Working with POLA, LACI, Dept. of Housing and Urban Development, LADWP (potentially MSRC)

5

Workforce Development

Can meet Metro's local hire requirements; potential to integrate other regional workforce programs into pipeline

Metro

6

Equitable Outcomes

Can determine appropriate metrics to evaluate within Task Force, CLC and working groups

7

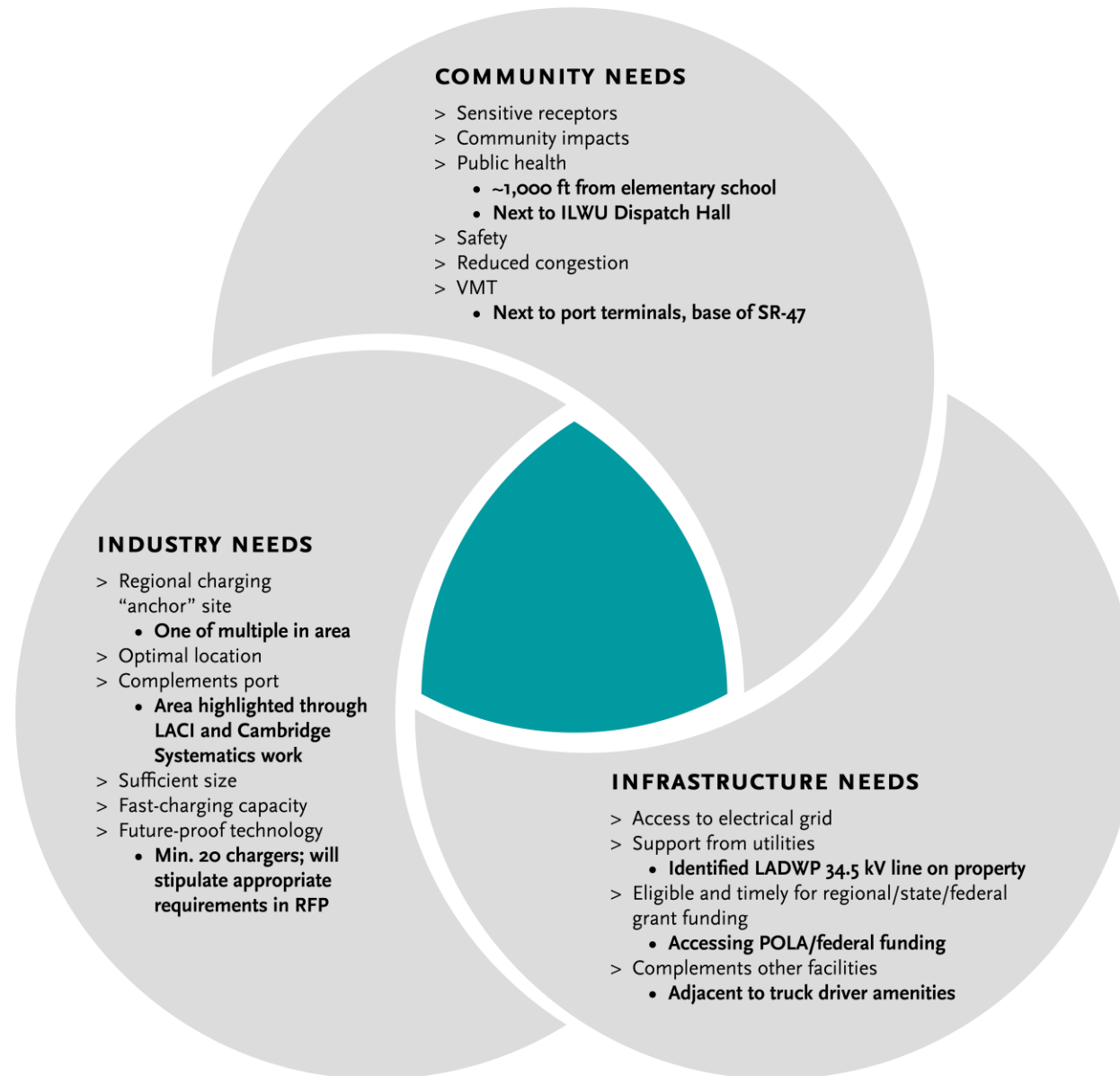
Legislative Platform

Project can identify how to fine-tune CEQA to deploy infrastructure expeditiously while maintaining environmental standards

8

Expeditious Deployment of Resources

Project can move forward to selecting a private sector operator by year-end. Federal funding catalyzing other partners to action



Agenda Item #3: Mobile Source Reduction Committee RFI Results

*Presentation by: Akiko Yamagami,
Transportation Planning Manager, Metro*

- i. Presentation
- ii. Discussion

RFI for Zero-Emission Infrastructure to Support Goods Movement

Summary

- > 23 responses submitted on November 30, 2022
- > Metro expressed our interest to partner with MSRC to support promising proposals within the 710 Corridor.
- > Some responses include multiple sites.
- > Not all responses are located within the 710 Corridor.
- > Metro identified total 18 sites within the Corridor.

Metro's initial evaluation criteria

- > The proposed project is located within the 710 Corridor.
- > The target customers are heavy-duty trucks.
- > The project includes committed site(s) for charging or refueling.
- > The project aligns with the 710 ZET Program Principles.

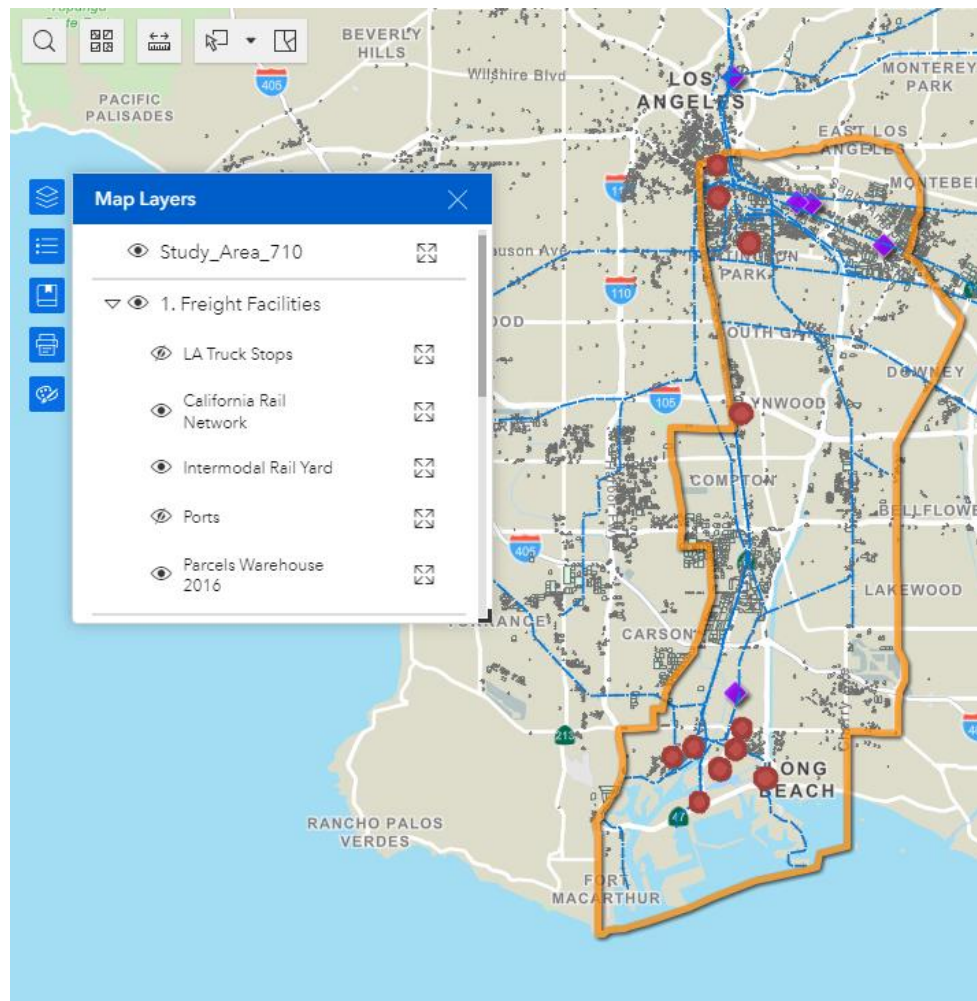
RFI for Zero-Emission Infrastructure to Support Goods Movement

	City	# of Chargers	Electric Energy Range	# of Hydrogen Dispensers	Total Project Cost (\$ in millions)	MSRC Fund Requested (\$ in millions)	Possible Metro Contribution (\$ in millions)	Completion Date
1	Commerce					N.S.		
2	Compton					N.S.		
3	Compton	25	150 kW	0	\$ 2.5	N.S.	\$ 0.5	
4	Existing Truck Stops	0	N/A	2	\$ 10.0	\$ 2.0	\$ 2.0	Q4 2024
5	Long Beach	54	360 kW	0	\$ 9.3	N.S.	\$ 1.9	1 Yr from the start of Engineering and Permitting
6	Long Beach	30	350 kW	0	\$ 9.7	N.S.	\$ 1.9	Q2 2024
7	Long Beach	4	360 kW and MCS	0	\$ 5.4	N.S.	\$ 1.1	Dec-24
8	Long Beach	31	180 kW & 350 kW	0	\$ 12.9	\$ 13.9	\$ 2.6	Q2 2024
9	Long Beach	TBD				N.S.		
10	Los Angeles	TBD				N.S.		
11	Los Angeles	TBD				N.S.		
12	Los Angeles	5	350 kW	0	\$ 2.7	\$ 0.3	\$ 0.5	Q3 2024
13	Rancho Dominguez	40	175 kW	0	\$ 39.0	\$ 20.0	\$ 7.8	Q2 2024
14	Vernon	12	360 kW	0	\$ 13.9	N.S.	\$ 2.8	1 Yr from the start of Engineering and Permitting
15	Vernon	29	180 kW	0	\$ 29.0	\$ 16.8	\$ 5.8	Q2 2024
16	Vernon	5	350 kW	0	\$ 2.7	\$ 0.3	\$ 0.5	Q3 2024
17	Wilmington/Los Angeles	6	350 kW	0	\$ 4.2	N.S.	\$ 0.8	Dec-23
18	Wilmington/Los Angeles					N.S.		
		241		2	\$ 141.3		\$ 28.3	



N.S.: Not specified in the application

RFI for Zero-Emission Infrastructure to Support Goods Movement



Mapping of 11 sites with known addresses

- > Several sites are within the Port owned properties
- > Two major clusters; near the ports and northern end of the 710 Corridor
- > Need to work through MSRC to get addresses of unidentified sites

RFI for Zero-Emission Infrastructure to Support Goods Movement

Preliminary evaluation against the ZET Program Principles

	City	1. Maximizing leverage of seed funding	2. Community Engagement	3. Corridor Community Benefits	4. Coordination	5. Workforce Development	6. Equitable Outcomes	7. Legislative Platform	8. Expedient Deployment of Resources
1	Commerce		X		X	X	Vehicle Pool		
2	Compton		X		X	X	Vehicle Pool		
3	Compton								
4	Existing Truck Stops		Coordinates through Coalition for Clean Air and Breathe SoCal		X				X
5	Long Beach		X		X	X	Vehicle Pool		X
6	Long Beach				X				X
7	Long Beach				X	X	Truck-as-a-Service		X
8	Long Beach				X		Long-term vehicle lease		X
9	Long Beach				X				

RFI for Zero-Emission Infrastructure to Support Goods Movement

Preliminary evaluation against the ZET Program Principles

	City	1. Maximizing leverage of seed funding	2. Community Engagement	3. Corridor Community Benefits	4. Corrdination	5. Workforce Development	6. Equitable Outcomes	7. Legislative Platform	8. Expeditious Deployment of Resources
10	Los Angeles				X				
11	Los Angeles				X				
12	Los Angeles				X		Fleet Rental		X
13	Rancho Domingues								X
14	Vernon		X		X	X			X
15	Vernon								X
16	Vernon				X		Fleet Rental		X
17	Wilmington/LA				X				X
18	Wilmington/LA								

RFI for Zero-Emission Infrastructure to Support Goods Movement

Next Steps

- > Work through MSRC to get more information on proposed projects to determine their alignment with the 710 ZET Program Principles
 - > Open to working with Metro to conduct community engagement and education?
 - > Flexibility in incorporating surrounding community desires and addressing their concerns related to the project(s)?
 - > Open to setting a reasonable local hiring target for the project(s)?
 - > Verify the reasonableness of their proposed schedule based on CEQA and permitting process
 - > Verify the reasonableness of their proposed energy reliability

Agenda Item #4:

First to Last Mile: Creating an Integrated Goods Movement Charging Network around the I-710 Corridor

*Presentation by: Jack Symington,
Senior Program Manager, Los Angeles
Cleantech Incubator (LACI)*

- i. Presentation
- ii. Task Force Discussion

LACI has an announced Dept. of Energy award with LB-ELA Task Force Partners

TITLE: First to Last Mile: Creating an Integrated Goods Movement Charging Network around the I-710 Corridor

Objectives:

- Create a plan for innovative infrastructure solutions at industrial facilities and commercial zones along critical freight arteries feeding into I-710 freeway.
- Identify existing goods movement real estate assets (e.g. ports, warehouses, distribution centers, retail locations) to provide charging for different M/HD fleets that can expand the proportion of duty cycles completed by a battery-electric truck
- Prepare local city governments to most effectively and efficiently site and permit the needed charging infrastructure.
- Evaluate different charging form factors that can meet the needs of medium- and heavy-duty vehicles and integrate into a range of properties.
- Leverage learnings from CEC-funded I-710 Blueprint and Zero Emission Delivery Zone pilots

Metro will be a participant in Energy Services and Community Advisory Groups (led by Gateway Cities COG)

Amount: \$688,000 (w/ funded partners UC Riverside, CEHAJ Gateway Cities COG)

Timeline: 24 months (beginning Q3 2023)

Supporting Partners:

- bp pulse fleet
- City of LA / LA Clean Cities Coalition
- Dependable Highway Express
- Electrify America
- IKEA
- LADWP
- Metro
- Shell Recharge Solutions
- SE LA Workforce Development Board
- SCE
- Volvo
- Walmart
- Wave
- 4Gen Logistics

Closing Remarks and Next Steps

You're Invited!

Interagency Transportation Equity Advisory Committee Meeting - Tuesday, March 21, 1pm

Los Angeles County Metropolitan Transportation Authority Board Room
One Gateway Plaza
Los Angeles, CA 90012

Agenda and In-Person/Virtual Meeting information [here](#)

UCLA Institute of Transportation Studies Reception - Tuesday, March 21, 4:30pm

Homebound Brew Haus at Union Station
800 North Alameda Street
Los Angeles, CA 90012

California Transportation Committee Meeting - Wednesday, March 22, 1pm; Thursday, March 23, 9am

Los Angeles Union Station Ticket Concourse
800 North Alameda Street
Los Angeles, CA 90012

Agenda and In-Person/Virtual Meeting information [here](#)

Upcoming Meetings and Project Information

Community Leadership Committee Meeting

- > Meeting #13 & 13.5

Thursday, March 23, 5-7pm

Monday, March 27, 5-7pm

Task Force Meeting

- > Task Force Meeting #19

Monday, April 10, 5-7pm

Working Group Meetings

- > Equity Working Group #11

Thursday, March 30, 5-7pm

- > Zero-Emissions Truck Working Group #15

Tuesday, April 18, 1-3pm

For the most updated list
of meeting dates, please visit
<http://www.metro.net/710-hub>

Stay connected to this project



Michael Cano
Executive Officer
Countywide Planning & Development
LA Metro
One Gateway Plaza, MS 99-13-1
Los Angeles, CA 90012



213.418.3010 W
213.305.0423 C



710corridor@metro.net



<https://www.metro.net/projects/lb-ela-corridor-plan/>



@metrolosangeles



losangelesmetro

Thank you!