

Welcome!

We will begin in a few moments.

**LB-ELA Task Force
Zero-Emission Truck Working Group
Meeting #13
February 21, 2023**

Working Group Member Identification

1

After launching the Zoom meeting, click on the "Participants" icon at the bottom of the window.



2

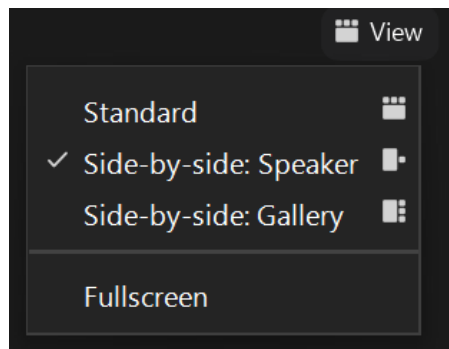
In the "Participants" list on the right side of the Zoom window, hover over your name and click on the "Rename" button.

Turn on Camera

- > To **start** and **stop** your video, click the camera icon at the bottom left of your control panel



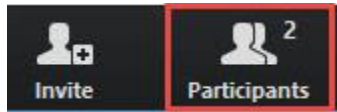
- > To switch between views during the meeting click or tap on **Standard**, **Side-by-side Speaker View**, and **Side-by-side Gallery View** at the top right corner of your zoom screen





Click **Interpretation** to choose your language.

- > To hear the interpreted language only, click **Mute Original Audio** (Optional).



Change your Zoom screen name to include name, agency/organization.



- > Click **Raise Hand** in your meeting controls, **Press*9** on the phone line, or raise your hand physically.
- > To lower your hand, click **Raise Hand** in your meeting controls.
- > The **Q&A** button is located on the control panel at the bottom of your screen.
- > To **mute** and **unmute**, click the microphone icon on the bottom left of your control panel.
- > To **start** and **stop** your video, click the camera icon at the bottom left of your control panel.
- > **Technology & interpretation support:**
323.609.3345

Detailed Agenda

1:00pm **Welcome, Agenda Review, and Purpose of the Zero-Emission Truck Working Group**

1:05pm **Agenda Item #1: Metro Update (10 minutes)**

1:15pm **Agenda Item #2: Focus Group Recap and Interactive Discussion (60 minutes)**

- a. Operational Fit
- b. Energy Needs
- c. Location Priorities
- d. Community Engagement
- e. Safety Measures

2:15pm **Agenda Item #3: Federal & State Funding Opportunities (20 mins)**

- i. Presentation (15 mins)
- ii. Discussion (5 mins)

2:35pm **Agenda Item #4: Metro's Sustainability and Transportation Electrification Policies**

Presentation by Cris Liban, Chief Sustainability Officer, LA Metro

- i. Presentation (10 mins)
- ii. Discussion (10 mins)

2:55pm **Closing Remarks and Upcoming Meetings**

3:00pm **Adjournment**

Welcome!

We will begin in a few moments.

**LB-ELA Task Force
Zero-Emission Truck Working Group
Meeting #13
February 21, 2023**



Erika C.B. Morales

Partner, Morales + Morales Partners

Welcome, Agenda Review, and Purpose
of the
Zero-Emission Truck (ZET) Working Group

Detailed Agenda

1:00pm **Welcome, Agenda Review, and Purpose of the Zero-Emission Truck Working Group**

1:05pm **Agenda Item #1: Metro Update (10 minutes)**

1:15pm **Agenda Item #2: Focus Group Recap and Interactive Discussion (60 minutes)**

- a. Operational Fit
- b. Energy Needs
- c. Location Priorities
- d. Community Engagement
- e. Safety Measures

2:15pm **Agenda Item #3: Federal & State Funding Opportunities (20 mins)**

- i. Presentation (15 mins)
- ii. Discussion (5 mins)

2:35pm **Agenda Item #4: Metro's Sustainability and Transportation Electrification Policies**

Presentation by Cris Liban, Chief Sustainability Officer, LA Metro

- i. Presentation (10 mins)
- ii. Discussion (10 mins)

2:55pm **Closing Remarks and Upcoming Meetings**

3:00pm **Adjournment**

Meeting Objectives

During this meeting, the working group will:

- > Review key discussion points and input received from the Industry, Infrastructure, and Community Needs Focus Groups
- > Participate in an interactive discussion with Metro and LACI on how key findings inform the design of Metro's Vision and next steps
- > Discuss upcoming funding cycle and grant opportunities for the ZE Truck Program
- > Discuss potential evaluation criteria and performance measures, and metrics for evaluating ZET Truck Projects and Programs

Agenda Item #1: Metro Update

ZET Program Recap – Metro Board Direction

> **Metro Board Direction and desired outcomes**

- \$200 million minimum funding target
- Leverage \$50 million local matches with private, regional, state, and federal funding
- Accelerated ZE deployment in the I-710 South (now Long Beach-East LA) Corridor
- Collaboration with regional stakeholders
- Independent, accelerated process from overall 710 (LB-ELA) Task Force Investment Plan process

> **Strategies to accomplish outcomes**

- Identify discretionary grant opportunities
- Convene and collaborate with community and regional stakeholders
- Develop a scope of work for the ZET Program
- Identify regional funding partners
- Identify near and long-term opportunities
- Identify policy and legislative barriers to implementation

ZET Meeting #12 Recap

Summary

- > Held virtually via Zoom on Tuesday January 17, 2022
- > 28 participants (25 Participants, 3 CLC members)

Key Takeaways

- > Public charging will require public investment to amortize capital costs.
- > Innovative partnerships can unlock value and mitigate risk.
- > SB 671 must identify barriers and solutions for long-term funding success
- > Focus on expanding charging opportunities corridor-wide and analyzing long-term benefits of ZE infrastructure for corridor stakeholders
- > Collaborate with other agencies, community groups, and residents to determine how charging locations will receive priority and ensure community benefits will be at the forefront of advancing ZE infrastructure

ZET Program Principles – Overview

1

Maximize leverage of seed funding

by collaborating with regional partners and funding agencies.

2

Community Engagement

that centers corridor residents and stakeholders throughout the development process.

3

Corridor Community Benefits

by creating economic opportunities, improving air quality, and reducing long-standing health impacts generated by diesel trucks.

4

Coordination

with regional and funding partners, government agencies, and key stakeholders.

5

Workforce Development

that ensures community benefits and access to opportunity through the pursuit and implementation of ZE Technology.

6

Equitable Outcomes

ensured by performance metrics that evaluate sustainable outcomes.

7

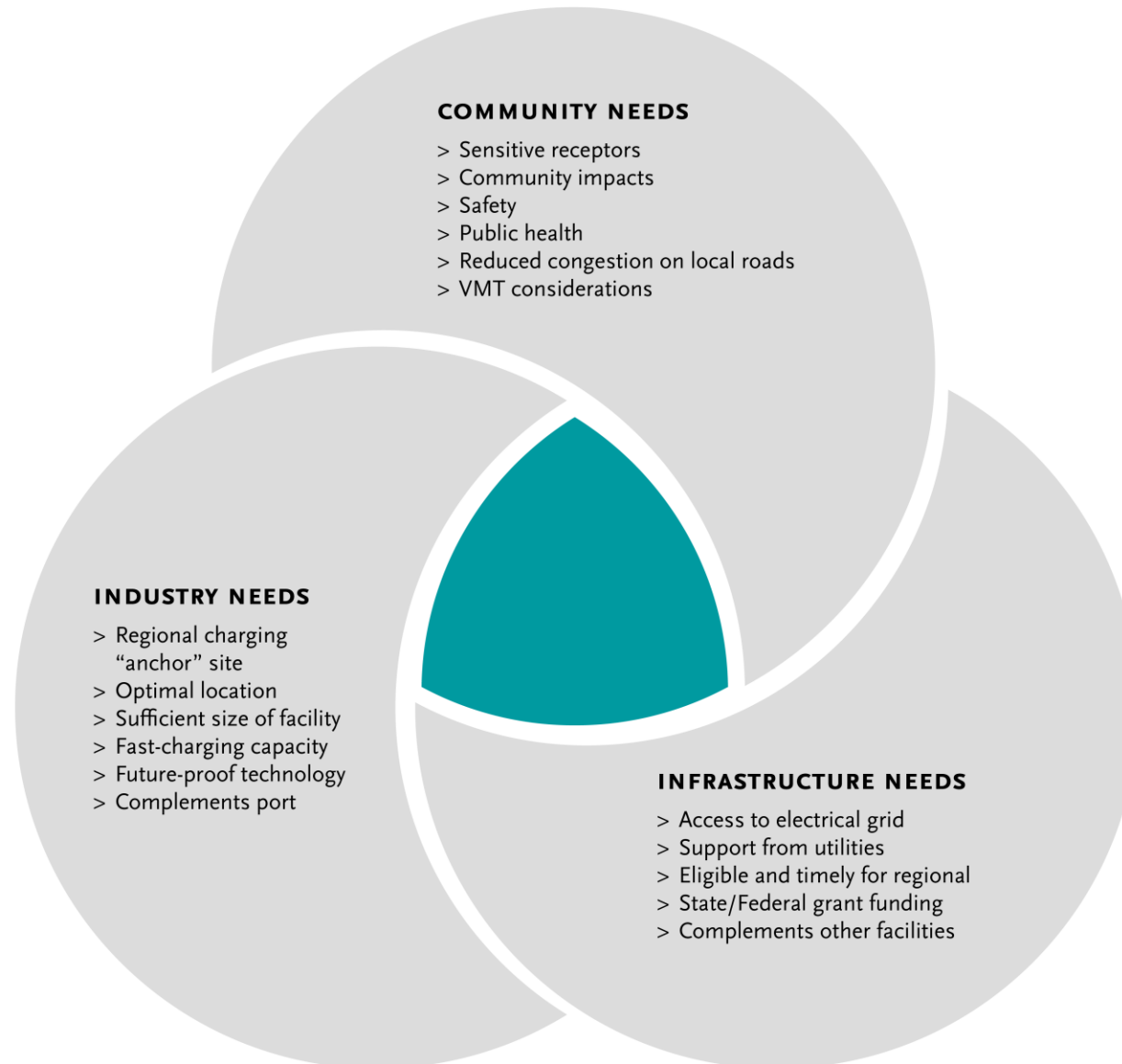
Legislative Platform

designed to support the accelerated, equitable deployment of ZE technology by reducing barriers and increasing incentives to adoption.

8

Expeditious Deployment of Resources

to maximize the buying power and benefit of investment while supporting community engagement and effective outreach.



Agenda Item #2:

Focus Group Recaps

- Industry & Infrastructure Needs Focus Group Recap
- Community Needs Focus Group Recap

Focus Group Overview

- > Metro co-hosted two Focus Groups with the Los Angeles Cleantech Incubator (LACI) to discuss Metro's Vision for one or more Regional Charging Facilities that meet the needs of Industry, Infrastructure, and Community:
 - Industry & Infrastructure Needs – January 31, 2023
 - Community Needs – February 8, 2023

- > Discussion topics:
 - Operational Fit
 - Energy Needs
 - Location Priorities
 - Community Engagement
 - Safety Measures

Industry & Infrastructure Needs Focus Group Participants

INDUSTRY	
Name	Organization
Ian Hostetler	Electrify America
Thorsten Fischer	Daimler
Will Mitchell	Forum Mobility
JoAnne Golden	GNA
Ty Cratic	GNA
Matt Schrap	Harbor Trucking Association
Katie Cox	Prologis
JT Steenkamp	Prologis
Tom Ashley	Shell Recharge Solutions
Tony Williamson	Total Transportation Services, Inc. (TTSI)
Aravind Kailas	Volvo
Michael Ippoliti	Volvo
Rustam Kocher	WattEV
Salim Youssefzadeh	WattEV

INFRASTRUCTURE	
Name	Organization
Michelle Vater	California Energy Commission
Gregory Sarvas	Los Angeles Department of Water & Power
Jack Haggenmiller	Southern California Edison
Steven Tilk	Southern California Edison

PORTS	
Name	Organization
Rick Cameron	Port of Long Beach
Chris Cannon	Port of Los Angeles

TRANSPORTATION AGENCIES	
Name	Organization
Paul Marquez	Caltrans
Hannah Walter	CTC

OTHER	
Name	Organization
Niki Okuk	Calstart
Nancy Pfeffer	Gateway Cities Council of Governments
Viviana Gomez	LA County Supervisor Janice Hahn
Chris Chavez	Coalition for Clean Air
Michael Samulon	City of LA

Community Needs Focus Group Participants

ATTENDEES	
Name	Organization
Laura Cortez	East Yard Communities for Environmental Justice
Sylvia Betancourt	Memorial Care
Jennifer Ganata	Communities for a Better Environment
Ambar Rivera	Communities for a Better Environment
Najah Louis	National Resources Defense Council
Jocelyn Del Real	East Yard Communities for Environmental Justice
Chris Chavez	Coalition for Clean Air
Dr. Joe Lyou	Coalition for Clean Air
Viviana Gomez	LA County Supervisor Janice Hahn
Lilly O'Brien	LA County Supervisor Holly Mitchell
Dan Rodman	City of LA
Gloria Roberts	Caltrans
Michael Samulon	City of LA
Kareem Gongora	Coalition for Clean Air

Industry Focus Group Questions

Operational Fit

- *How would fleets incorporate a regional charging facility into operations?*
- *How could a facility's role change over time to ensure utilization in the near term and meet the needs of increased BEV adoption?*
- *Would there be anticipated changes in needs for truck + trailer vs bobtail charging?
Opportunity vs overnight charging?*
- *What other amenities should be on-site or adjacent to encourage truck drivers to use the facility?*

Focus Group Highlights

Operational Fit

- > MD/HD charging facilities need to be reliable to ensure the ongoing operations of fleets. *(Rustam Kocher, WattEV)*
- > Site design needs to prioritize maneuverability and streamlining. *(JT Steenkamp, Prologis)*
- > There is a need for public charging, but larger fleets will likely want their own infrastructure to minimize risk with insurance and cargo on site. *(Tony Williamson, TTSI)*
- > Industry perspective to understand drivers' needs and determine what is required to make the switch to ZE is critical. *(Rick Cameron, Port of Long Beach)*

Infrastructure Focus Group Questions

Energy Needs

- *What are the industry needs for charging capacity and how are they or aren't they being met?*
- *What should be resiliency requirements and how should DERs play a role?*
- *With the current level of energy supply and forecast demand from Class 8 trucks, how can we ensure that the grid can support charging infrastructure?*

Infrastructure Focus Group Highlights

Energy Needs

- > Power availability and Megawatt Charging System (MCS) must come together. Where does the energy come from to meet the peak charging challenge? (*Thorsten Fischer, Daimler*)
- > Generating electricity at the site (i.e. solar panels) can help offset of the peak hour demands or overall electric grid capacity. (*Ron Hunt, Forum Mobility*)
- > Who should pay for the new ZE infrastructure expense? (*Steve Tilk, SCE*)

Focus Group Questions

Location Priorities

- *Where should a regional charging facility or facilities be located?*
- *What evaluation criteria currently are used to identify locations?*
- *Where would be the priority location(s) for one or more regional charging facilities?*
- *What criteria should be considered when determining potential sites?*
- *How do we avoid additional VMT and other impacts with siting locations?*
- *How can we work with local governments to identify locations that will minimize the burden of maintaining road infrastructure?*

Focus Group Highlights

Location Priorities

- > Leverage understanding of current truck movements, where they refuel, etc. (*Michael Ippoliti, Volvo*)
- > Identify real estate first. It is more difficult to identify an acre or more of land in this region. The location should have amenities for drivers. (*Ian Hostetler, Electrify America*)
- > Multiple sites may best serve the needs of drivers. A single mega-site could require drivers to go out of their way and increase traffic. (*Rustam Kocher, WattEV*)
- > Smaller stations spread out will decrease the impacts that the larger facility would cause. (*Viviana Gomez, LA County*)
- > Local jurisdictions need to be engaged in discussions about siting, permitting, utilities, access, etc. (*Nancy Pfeffer, Gateway Cities COG*)
- > Zoning classifications will determine potential sites; use mapping tools to identify pollution pockets; mitigate impacts to roads and sensitive receptors. (*Kareem Gongora, CCA*)

Focus Group Highlights

Community Engagement

- *How can Metro incorporate community input into design and function of the facility?*
- *What are strategies for outreach and education to the trucking community on charging facility design, access, and functionality?*
- *What are possibilities for associated workforce development?*
- *What other amenities should be on-site or adjacent to support community needs?*

Focus Group Highlights

Community Engagement

- > Facilitate conversations with truck drivers to gain perspective of their experience and needs. *(Lily O'Brien, LA County)*
- > Build focus groups with independent owners & operators to get their input; put together the plan to create proposals for grant funding opportunities. *(Laura Cortez, EYCEJ)*
- > Work with schools, community centers, and parks along the corridor to engage with the key local stakeholders to work on outreach strategies. *(Sylvia Betancourt, LBACA)*
- > Create funding mechanisms with local municipalities to build these local public electrification locations and create a fund to support this initiative. *(Kareem Gongora, CCA)*

Community Focus Group Questions

Safety Measures

- *Which criteria should be considered when determining safety measures for communities?*
- *How can truck driver safety be addressed?*
- *What truck routing measures need to be put in place?*
- *Weight of BEVs are 33% heavier than diesel vehicles, what does that mean with respect to safety measures? (e.g. longer distance to stop, additional impact on road conditions)*

Community Focus Group Highlights

Safety Measures

- > Prioritize efforts to improve impacted areas and work with local agencies to provide resources to those communities. *(Laura Cortez, EYCEJ)*
- > Implement plans to divert traffic from sensitive receptors and minimize impact on communities is key. *(Sylvia Betancourt, EYCEJ)*
- > Conduct route studies revolving around identifying exposure on routes and how we can re-route truck to improve the air quality in those areas that are most impacted. *((Ambar Rivera, CBE)*

Agenda Item #3: Federal & State Grant Funding Opportunities

Federal and State Grant Opportunities – Examples

Grant Opportunities		2022			2023											
		Q4			Q1			Q2			Q3			Q4		
		Oct	Nov	Dec	Jan	Feb	Mar	Apr	May	Jun	Jul	Aug	Sep	Oct	Nov	Dec
FEDERAL GRANTS	Federal-State Partnership for State of Good Repair			◆			■									
	RAISE			◆		■										
	INFRA (Nationally Significant Multimodal Freight and Highway Projects)				◆		■									
	Mega (National Infrastructure Project Assistance program)						■									
	CIG (WSAB New Starts & ESFV EPD)		◆				■									
STATE GRANTS	Transit & Intercity Rail Capital					■										
	Local Partnership Program- Competitive* (Nominations due Nov. 2022)	■	■													
	Local Partnership Program-Formula*(Initial programming nominations due Nov 2022)	■	■					■								
	Trade Corridor Enhancement* (Nominations Due Nov 2022)	■	■													
	Active Transportation Program*(Nominations due June 2022. MPO programming ongoing. Final MPO rec. due April)							■								
	Carl Moyer Memorial Air Quality Standards Attainment Program				◆											
	Clean Transportation Program												◆			
	Low Carbon Transit Operations															
	Sustainable Transportation Equity Project (STEP)															
	Transformative Climate Communities Program						◆									
	HVIP															
	Energiize					◆										
OTHER POSSIBLE GRANT OPPORTUNITIES	Assessing the role of Hydrogen in CA's decarbonizing electric system	◆				■										
	Office of Traffic Safety Grants					■										
	Infill Infrastructure Grant Program		◆				■									
	Bloomberg Initiative for Cycling Infrastructure		◆				■									
	LD Vehicle and Multi-Use Hydrogen Refueling Infrastructure		◆				■									
	Transit and Intercity Rail Capital Program	◆					■									
	AB 617 Community Air Grant Program	◆					■									
	Sustainable Transportation Planning Grants				◆		■									
	Areas of Persistent Poverty Program				◆		■									
	Resilient and Efficient Codes Implementation				◆		■									
	Adaptation Planning Grant Program					◆		■								
	Port Infrastructure Development Program Grants			◆												
	Wildfire Prevention Grants Program				◆		■									
	Clean California Local Grant Program				◆			■								

- Application period
- ◆ NOFO released (per statute or other federal communication)
- ◆ NOFO expected no later than
- Applications due

*Additional NOFOs may be announced for Federal Fiscal Year 2023 contingent on Congressional action



**Agenda Item #3:
Metro's Sustainability and
Transportation Electrification Policies**

Equitable Outcomes — ensured by performance metrics that evaluate sustainable outcomes.

- > Develop a variety of **localized performance metrics** to measure improvements and quality of life for residents along the corridor.
- > Work with the 710 Task Force, Equity Working Group, and CLC to **apply principles from the EPET**.
- > Monitor **performance** over time, evaluate **outcomes**, and identify potential **areas of improvement**.

Performance Measures and Desired Outcomes – Examples

Workforce Development and Jobs

- Net increase in jobs
- Increase in per capita income
- Growth in new manufacturing and deploying infrastructure

Environmental

- Reduction in GHG Emissions
- Amount of EV subsidies for small fleets

Public Health

- Avoided premature deaths over time
- Avoided asthma attacks in young children

Community

- Reduced household energy costs

Evaluating and Refining Projects & Programs



- **November 2022 to January 2023** —Seeking input on criteria to evaluate and refine projects and programs
- **Early 2023**—Projects will begin to undergo evaluation & prioritization in the next phase

Evaluation Criteria

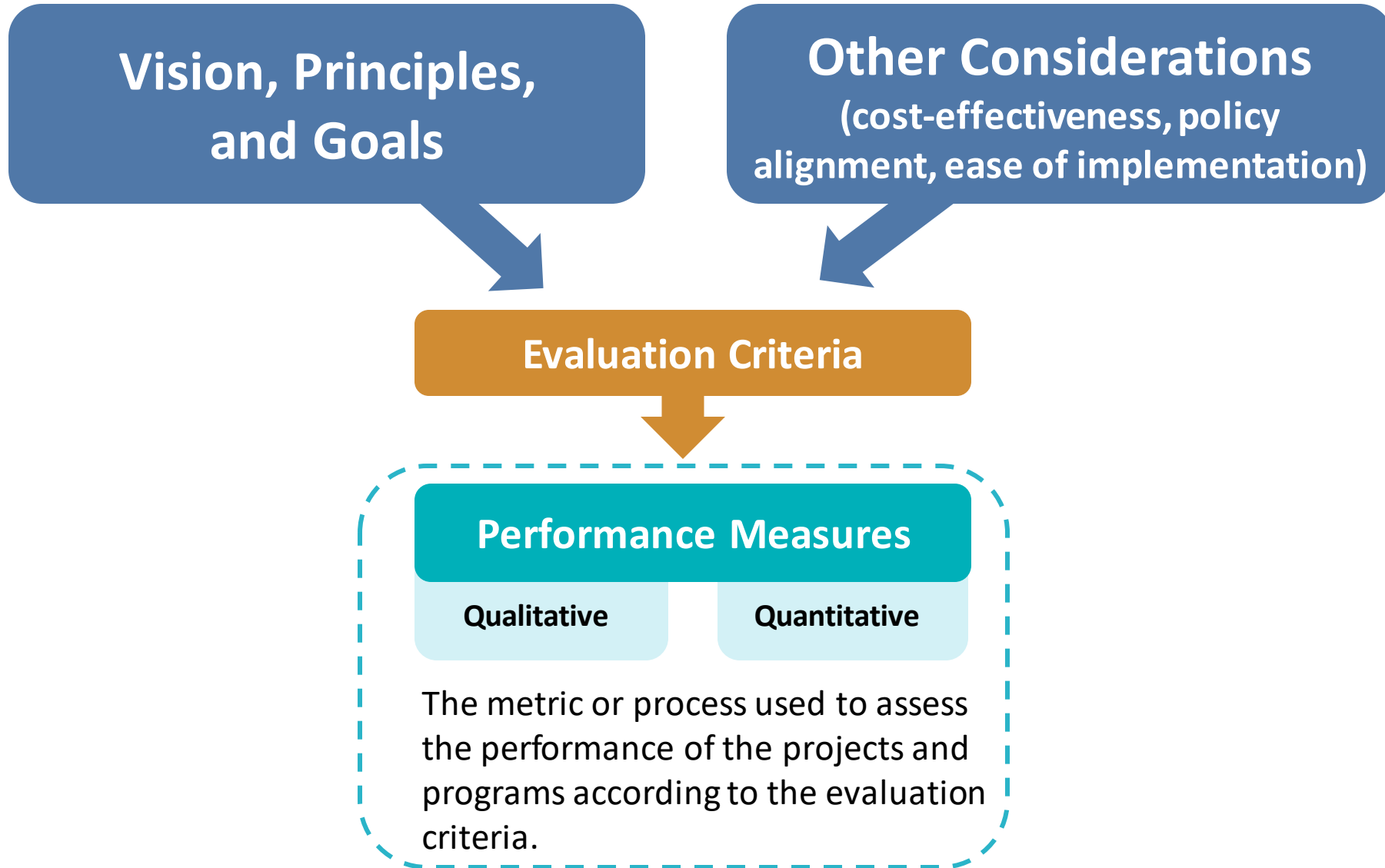
**Vision, Principles,
and Goals**

Other Considerations
(cost-effectiveness, policy
alignment, ease of implementation)

Evaluation Criteria

The benchmark or standard against which the projects and programs will be evaluated to measure relevance, impact, sustainability, effectiveness, and fit. Think in terms of "outcomes" or "desired states".

Evaluation Criteria



Examples of Project Evaluation Criteria

EXAMPLE

Evaluation Criteria

1. Increased use of ZE drayage trucks
2. Increased deployment of ZE charging/fueling infrastructure
3. Eligibility for support from significant State and/or Federal funding programs

Example of Project Improvement:

New charging/fueling stations for zero-emissions trucks along existing routes throughout study area

Examples of Project Evaluation Criteria

EXAMPLE

Evaluation Criteria

Eligibility for support from significant State and/or Federal funding programs



Performance Measures

Amount of state and federal grant funding available (*for zero-emissions medium and heavy-duty truck infrastructure deployment*)
Quantitative

Example of Project Improvement:

New charging/fueling stations for zero-emissions trucks along existing routes throughout study area

Examples of Project Evaluation Criteria

Evaluation Criteria

State and federal grant funding awarded for zero-emissions medium and heavy-duty truck infrastructure deployment

EXAMPLE

Performance Measures

- Resources for planning and deploying ZE truck charging/fueling facilities in the study area
Qualitative
- Increase in number of new fast-charging/fueling docks for ZE trucks
- Overall awarded amount and leverage achieved
Quantitative
- Locate charging facilities along existing routes throughout the study area consistent with the ZET Program Principles
Transformational

Example of Project Improvement:

New charging/fueling stations for zero-emissions trucks in the study area

Evaluating for Equity

Key Issues

Equity assessments must consider several quantitative and qualitative measures:

- **What** a project accomplishes locally and regionally
- **How** a project is implemented
- **Who** is meaningfully involved in the planning and implementation process, and how
- **Who** receives project benefits or faces negative project impacts
- **When** projects are implemented in each community, based on factors such as need and historical disinvestment

Initial List of Projects & Programs: Zero-Emission Trucks

Project ID	Name (if applicable)	Short Description	Source
LB-ELA_0004	Long Beach-East Los Angeles Corridor Clean Truck Program	In January 2021, the Metro Board approved the 2021 Goods Movement Strategic Plan, which included a Countywide Clean Truck Initiative, with the 710 South Clean Truck Program identified as a goods movement strategic priority. At its October 2021 meeting, the Metro Board acted to recommit \$50 million from Measure R I-710 South Corridor funds as seed funding for the 710 South Clean Truck Program, which has been subsequently renamed the LB-ELA Zero Emissions Truck Program. The objective of this program is to turn over diesel trucks in favor of zero emissions trucks in the LB-ELA Corridor. The program would contribute subsidy funding to deploy a number of zero emissions trucks on I-710 as well as seed funding to develop electric charging/refueling stations for zero emissions trucks.	Metro LRTP, SPP Survey, SPP Mapping, CA-7
LB-ELA_0023	Clean Truck Infrastructure	Install charging infrastructure for zero emissions trucks.	Metro 2028 Mobility Concept Plan, SPP Survey, SPP Mapping

Closing Remarks and Next Steps

Upcoming Meetings and Project Information

Community Leadership Committee Meeting

- > Meeting #12

Thursday, February 23, 5-7pm

Task Force Meeting

- > Task Force Meeting #18

Monday, March 13, 5-7pm

Working Group Meetings

- > Zero-Emissions Truck Working Group #14

Tuesday, March 21, 1-3pm

For the most updated list
of meeting dates, please visit
<http://www.metro.net/710-hub>

Stay connected to this project



Michael Cano
Executive Officer
Countywide Planning & Development
LA Metro
One Gateway Plaza, MS 99-13-1
Los Angeles, CA 90012



213.418.3010 W
213.305.0423 C



710corridor@metro.net



<https://www.metro.net/projects/lb-ela-corridor-plan/>



@metrolosangeles



losangelesmetro

Thank you!