

We're planning a new way to ride along Vermont Avenue.

VERMONT TRANSIT CORRIDOR Fact Sheet



We're planning a new way to ride along Vermont Avenue.

Metro is planning a better way to travel along Vermont Avenue that doesn't rely solely on a car. As the busiest bus corridor in Los Angeles County, transit riders deserve improvements to bus service that can be implemented quickly. Additionally, Metro is developing a Bus Rapid Transit (BRT) system that offers faster and more reliable service by reducing the amount of time buses spend stuck in traffic. These high-quality transit improvements are being delivered to communities that need it most.

The Vermont Transit Corridor (VTC), served by Lines 204 and 754, stretches approximately 12.4 miles from Sunset Boulevard to 120th Street. As one of the oldest transit corridors, it partially follows the path of a historic Los Angeles streetcar route. Today, it serves densely populated, diverse, and transit-dependent neighborhoods, with over 36,000 daily boardings on its buses. The VTC also connects to several rail lines (B, C, D, and E), over 20 east-west bus routes, and major destinations like Kaiser Permanente and Children's Hospital Los Angeles at Vermont/Sunset. The corridor is home to a host of educational institutions including Manual Arts High School, Los Angeles City College, American Career College, West Coast University, the Braille Institute, and the University of Southern California (USC). Many of its regional community assets include Exposition Park, museums, sports venues, several public facilities, and many faith-based institutions.

Previous Studies

We heard you! Metro completed two studies in 2017 and 2019 that explored potential BRT and rail alternatives for the corridor. In June 2022, Metro collaborated with several community groups to gather feedback on transit options. Based on this input, Metro is advancing the following:

- > Near-term bus service improvements to be implemented in early 2025
- > Medium-term Bus Rapid Transit, targeted for completion by 2028
- > Long-term exploration of rail options, pending future funding

Project Overview

Near-Term Bus Improvements

In early 2025, Metro is introducing bus only lanes in the northern and southern areas of the corridor. These lanes make buses go faster, allow for more frequent and reliable service and help move more people without building new roads or infrastructure.

The existing 4-7 PM peak weekday parking restrictions on Vermont, between Sunset and Wilshire will be changed to 3-7 PM. Areas of Vermont, between Sunset and Wilshire that have existing 7-9 AM weekday parking restrictions will be changed to 7-10 AM, and areas that don't have existing AM parking restrictions will have them added between 7-10 AM weekdays.

The bus only lanes will be clearly marked with stripes and drivers can enter them to make right turns and to access driveways along Vermont. Bus lanes can also be used by people on bicycles.

Medium-Term Bus Rapid Transit

By 2028, a high-quality Bus Rapid Transit (BRT) will be delivered designed to be faster, more reliable, and more convenient.

BRT will offer significant benefits to the communities it serves, including:

- > Shorter travel times for passengers
- > Improved on-time performance and reduced wait times
- > More transit options that make public transportation a viable alternative to driving
- > Reduced greenhouse gas emissions, contributing to better air quality and a healthier environment through encouraging more people onto public transit and future electric vehicles

The BRT project aims to provide a premium north-south transit service that links to key destinations, improving access to jobs, education, and essential services. It will also strengthen connections to the regional transportation network and help meet the area's growing transportation needs.

The Vermont Transit Corridor is part of the Measure M expenditure plan, with \$425 million in allocated funding and an anticipated opening date of 2028.

Traveling along the VTC

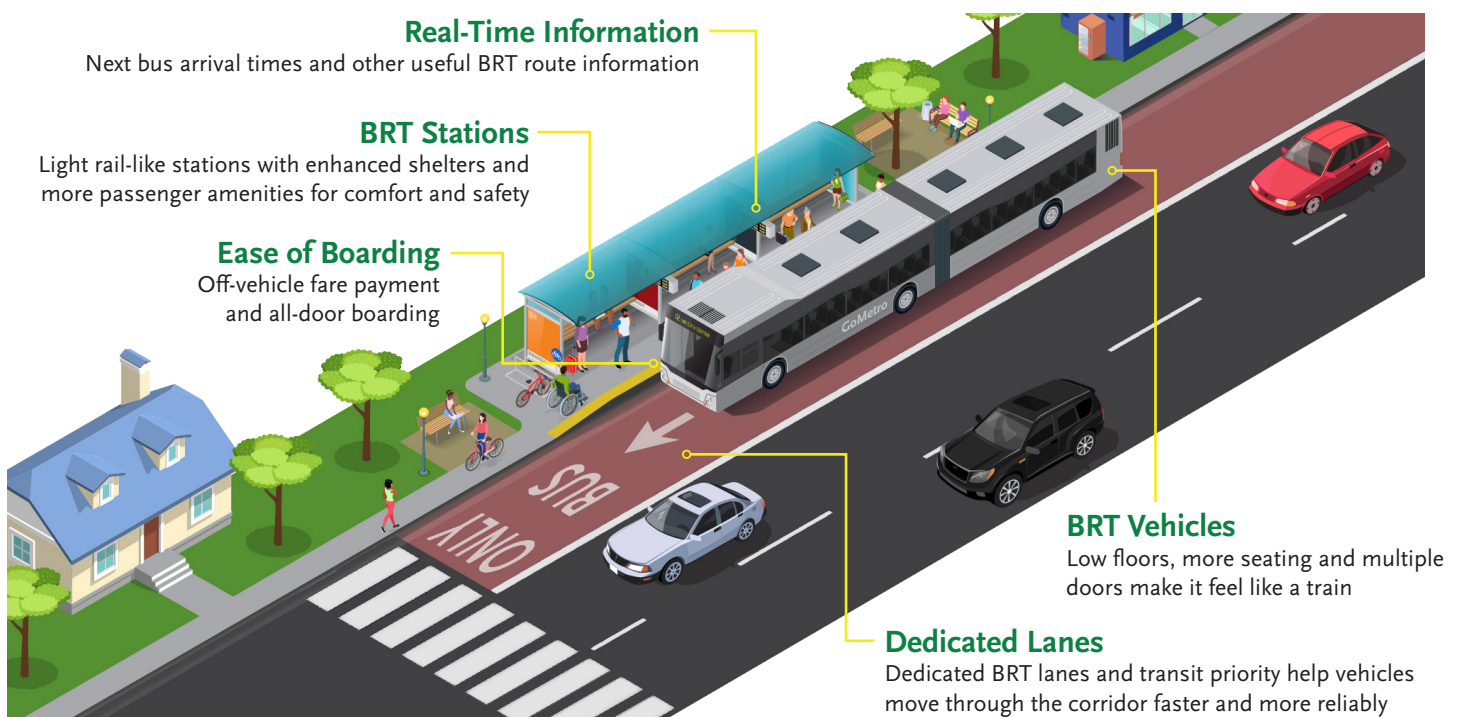
Based on community feedback received to date, Metro is proposing a side-running BRT, which requires taking the travel lane adjacent to the parking lane in each direction, thereby preserving most of the existing parking.

Key features of BRT include:

- > Enhanced stations with seating, shelters, lighting, trash bins, and real-time arrival displays
- > Even more frequent, safer, and dependable service
- > Dedicated bus lanes extending approximately 12.4 miles from Sunset Bl to 120th St
- > Transit signal priority
- > Future electric buses that are quieter and eco-friendly
- > All-door boarding for faster passenger loading

Side running BRT

Rendering for concept only – not indicative of final Vermont BRT



Long-Term Rail Project

Metro is committed to rail study options along Vermont Avenue in the coming years. The environmental review for rail study will begin as early as 2026 and contingent upon funding.

Building a Better Future Together

The Vermont Transit Corridor project is a vital step toward a more equitable and sustainable transportation system in Los Angeles. Together, we can create a future where public transit empowers communities.

Stay Informed and Engaged

Your voice matters in shaping the future of the Vermont Transit Corridor. Stay involved and share your feedback!

Contact Us

Metro invites you to stay connected and continue contributing your thoughts.

CONTACT US



Metro
One Gateway Plaza, MS 99-13-1
Los Angeles, CA 90012



213.922.2846



vermontcorridor@metro.net



metro.net/vermont



[losangelesmetro](https://www.facebook.com/losangelesmetro)

CHECK OUT OUR IMMERSIVE EXPERIENCE



1. Unfold this Fact Sheet flat
2. Scan QR Code
3. Launch Augmented Reality Experience