



Long Beach-East Los Angeles Corridor Plan
Task Force Meeting #28 Table of Contents
 January 22, 2024

Attendees..... 2

Introduction 4

Task Force #28 Virtual Meeting 4

 Welcome, Introductions, Agenda Review, Meeting Objectives, and Attendance 5

 Agenda Item #1: CMIP Overview 5

 Agenda Item #2: Timeline & Schedule 5

 Agenda Item #3: Projects for Initial Funding 5

 Agenda Item #4: Funding Strategy Framework 9

 Closing Remarks & Next Steps.....9

Appendix A – Meeting Agenda

Appendix B – Meeting Presentation

Appendix C – Detailed Comments





Long Beach-East Los Angeles Corridor Mobility Investment Plan
Task Force Meeting #28 Summary Report
January 22, 2024



ATTENDEES

TASK FORCE

Labor and Economic / Workforce Development

Louie Diaz, Vice President, International Brotherhood of Teamsters, Local Union 848
Chris Wilson, Public Policy Manager, LA County Business Federation (BizFed)

Transportation Agencies

Scott Strelecki, Program Manager II, Southern California Association of Governments (SCAG)
Roderick Diaz, Director of Planning and Development, Metrolink (Southern CA Regional Rail Authority)
Marisol Barajas, Manager of Government Relations, Long Beach Transit (RideLBT)

Community-Based Organizations and Advocacy Groups

Dr. Wilma Franco, Executive Director, Southeast Los Angeles (SELA) Collaborative
Alberto Campos, Associate Director, Southeast Los Angeles (SELA) Collaborative
Laura Cortez, Community Organizer / Co-Director, East Yard Communities for Environmental Justice (EYCEJ)
Janeth Preciado Vargas, Southeast LA Youth Organizer, Communities for a Better Environment (CBE)
Ambar Rivera, Researcher, Communities for a Better Environment (CBE)
Sylvia Betancourt, Project Manager, Long Beach Alliance for Children with Asthma (LBACA)
Marlin Dawoodjee Vargas, Community Outreach Liaison, Long Beach Alliance for Children with Asthma (LBACA)
Fernando Gaytan, Senior Attorney, Earthjustice

Freight and Logistics Industry

Kerry Cartwright, Director of Goods Movement, Port of Los Angeles (POLA)
Commissioner Sharon Weissman, Vice President of the Long Beach Board of Harbor Commissioners, Port of Long Beach (POLB)
Theresa Dau-Ngo, Director of Transportation Planning, Port of Long Beach (POLB)
Michele Grubbs, Vice President, Pacific Merchant Shipping Association (PMSA)

Environmental Organizations

Joe Lyou, President and CEO, Coalition for Clean Air (CCA)
Christopher Chavez, Deputy Policy Director, Coalition for Clean Air (CCA)

Academic / Research / Policy / Foundations

Dr. Genevieve Giuliano, Director, METRANS
Edward Muna, Project Manager, USC Equity Research Institute (ERI)

Local Jurisdictions

Luke Klipp, Senior Transportation Deputy, LA County Supervisorial District 1

LB-ELA Corridor Mobility Investment Plan Task Force Meeting #28 Summary Report

Ben Feldman, Special Projects Deputy, LA County Supervisorial District 1
Viviana Gomez, Transportation Deputy, LA County Supervisorial District 4
Steve Burger, Deputy Director, Transportation, LA County Department of Public Works (DPW)

Ex-Officio

Connell Dunning, Environmental Scientist, U.S. Environmental Protection Agency (EPA), Region 9
Hector De La Torre, Executive Director, Gateway Cities Council of Governments (GCCOG)
Marisa Perez, Transportation Policy Advisor, Gateway Cities Council of Governments (GCCOG)

Community Leadership Committee (CLC)

Irma Lopez, Cudahy
Tiesha Davis, San Pedro

Zero-Emission Truck (ZET) Working Group

Lynda Bybee, Gateway Cities Council of Governments

Project Team

Metro

Michael Cano, Executive Officer, Countywide Planning & Development
Lilian De Loza Gutierrez, Executive Officer, Local Government Relations & Countywide Initiatives, Community Relations
KeAndra Cylear-Dodds, Executive Officer, Equity and Race
Jessica Medina, Manager, Equity and Race
Akiko Yamagami, Manager, Transportation
Lucy Delgadillo, Project Manager, Highway Programs

Caltrans

Jeff Newman, Transportation Planner
James Shankel, Senior Environmental Planner
Kelly Ewing-Toledo, Deputy District Director
Division of Environmental Planning

AECOM

Dave Levinsohn, Vice President
Laura Adleman, Senior Outreach and Engagement Specialist
Lilia Scott, Transportation Planning Project Manager
Aryeh Cohen, Urban Planner
Colm Kennedy, Senior Economist, Infrastructure Economics

Cal Strategic Management

Robert Cáliz, Principal

Here LA

Amber Hawkes, Co-Director

Cambridge Systematics

Jon Overman, Senior Associate

Morales+Morales Partners

Erika Morales, Partner

Ramboll

Lakshmi Jayaram, Senior Managing Consultant

North Star Alliances

Chris Degroof, Chief Operating Officer

Leila Bardales, Project Manager

Arellano Associates

Melissa Holguin, Project & Staff Director

Susan DeSantis, Senior Project Manager

Laura Herrera, Project Manager

Nora Casillas, Deputy Project Manager

Eric Davidian, Project Coordinator

Parker Wojciechowski, Assistant Project Coordinator

Leticia Bustamante, Assistant Project Coordinator

Meeting Summary

The Long Beach-East Los Angeles Corridor Plan (LB-ELA CP) Task Force Meeting #28 was held virtually on Monday, January 22, 2024. The intent of Task Force Meeting #28 was to:

- > Present and engage in a discussion on the Draft Corridor Mobility Investment Plan (CMIP) including:
 - Modal programs
 - Initial funding for projects and programs
 - Funding Strategy Framework
- > Discuss the timeline to submit the Final CMIP to the Metro Board for consideration
 - Review the schedule and next steps
 - Define where we are in the process
 - Define what and when feedback is needed from the Task Force

Simultaneous interpretation in Spanish, Tagalog, and Khmer was provided. Prior to the meeting, the LB-ELA CP Task Force received the agenda (**Appendix A**) and presentation (**Appendix B**). Detailed comments can be found in (**Appendix C**).

Welcome, Introductions, Agenda Review, Meeting Objectives, and Attendance

- > Erika Morales, Partner, Morales + Morales, welcomed participants to the meeting and introduced the Metro Project Team.
- > Ms. Morales reviewed the meeting objectives and agenda.
- > 25 Task Force members, 3 Ex-Officio members, 2 CLC members, and 10 members of the public were present.

Agenda Item #1: CMIP Overview

- > Michael Cano, Executive Officer, Countywide Planning & Development, Metro, provided an overview of the Corridor Mobility Investment Plan (CMIP).
 - The CMIP is a multiyear planning vision that:
 - Identifies and funds initial implementation-ready project priorities to prepare for leveraging and implementation
 - Identifies longer-term project priorities and funds planning / pre-implementation phases leading to leveraging and implementation Plans, develops, identifies, and refines remaining projects, programs, strategic initiatives, and equity needs to advance the corridor's Vision, Goals, and Guiding Principles
 - Features 15 Community Programs and 5 Modal Programs
- > Mr. Cano reminded Task Force members of the LB-ELA Corridor Vision, Goals, and Guiding Principles and how that will help shape the CMIP. (see slides 16-18 in [**Appendix B**](#)).
- > Mr. Cano thanked Task Force members for their continued dedication and acknowledged their contributions to the project.

Agenda Item #2: Timeline & Schedule

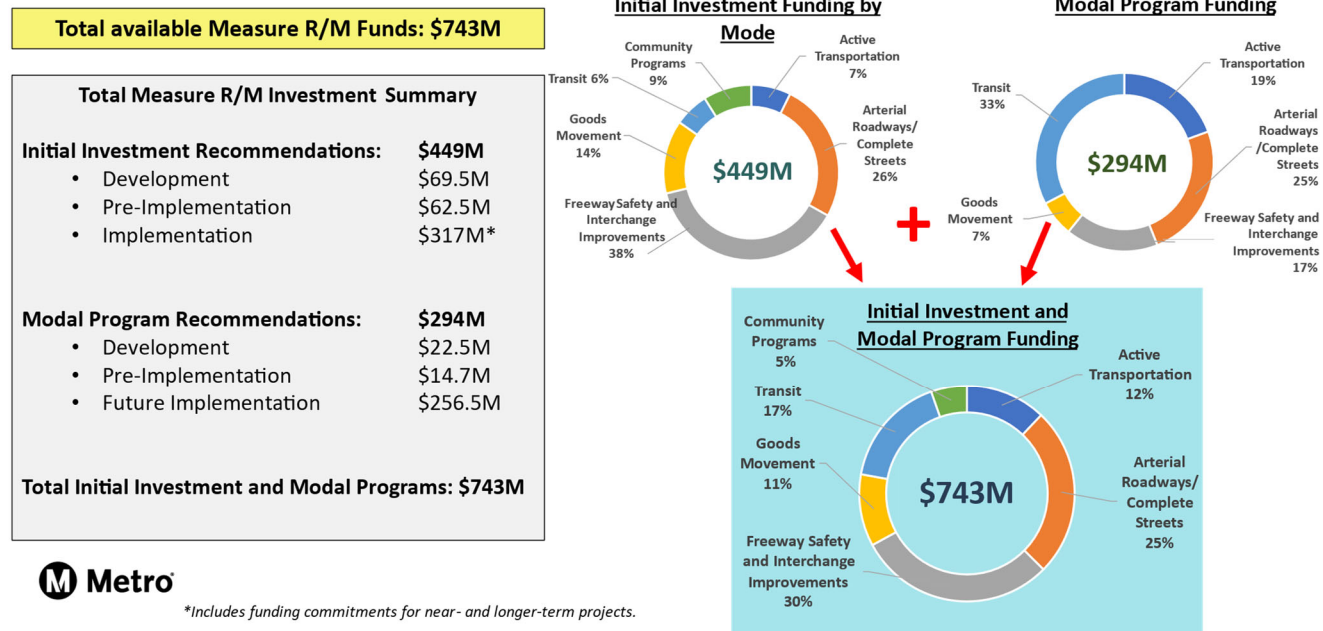
- > Lilian De Loza-Gutierrez, Executive Officer, Local Government Relations & Countywide Initiatives, Community Relations, Metro, reviewed Project Milestones.
 - The project has reached the milestone of Creating an Investment & Policy Strategy for Implementation
- > Ms. De Loza-Gutierrez shared the Project [Timeline and Schedule](#).
 - The draft Investment Plan was submitted to the Metro Board Box on **Friday, January 31, 2024**.
 - The final Investment Plan will be submitted to the Metro Board of Directors for review and approval in **March 2024**.
- > Ms. Morales facilitated a discussion with the Task Force members.
- > Discussion highlights included:
 - Community programs are a separate initiative from modal programs.
 - Modal programs focus on specific modes of transit.

Agenda Item #3: Projects for Initial Funding

- > Mr. Cano presented the Corridor Mobility Investment Plan (CMIP) Measure R/M Investment Summary. For more detailed information, see slide 31 in [**Appendix B**](#).
 - Total available Measure R/M Funds: \$743 million

- Measure R funding is currently available
- Measure M funding will be available in two waves of funding
- Initial Investment Recommendations: \$449 million
- Modal Program Recommendations: \$294 million

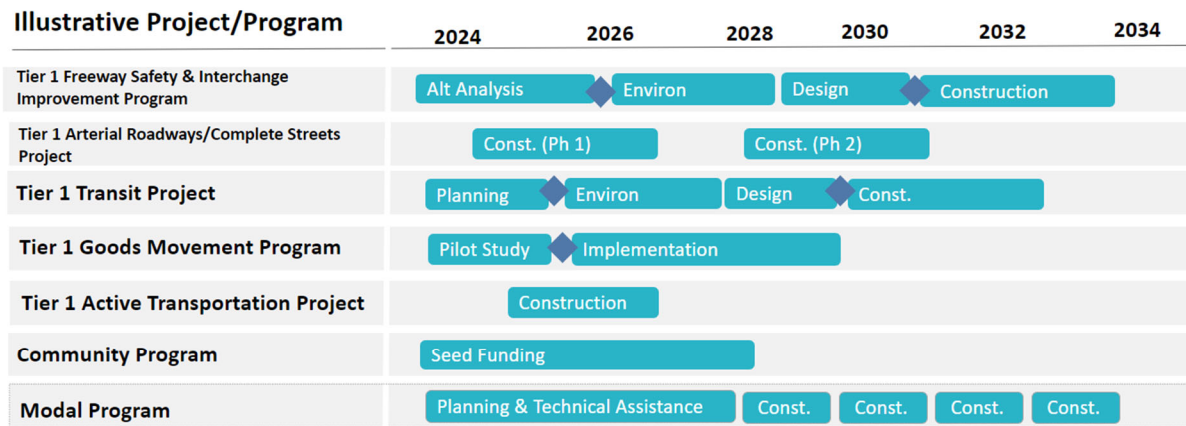
CMIP Measure R/M Investment Summary



*Includes funding commitments for near- and longer-term projects.

- > Aryeh Cohen, Planner, AECOM, provided an overview of the project [Dashboard](#).
 - The Dashboard is an interactive tool that shows detailed project information, including the evaluation results and geographic locations for the proposed projects and programs.
- > Mr. Cano shared an example of a project recommended for initial funding in the CMIP. See slide 34 in **Appendix B** for detailed information.
- > Mr. Cano presented an example Concurrent Timeline for Project Development and Implementation. See the slide below for detailed information.

Concurrent Timeline for Project Development and Implementation (Example)



Measure R – funding for construction
 Measure M – funding for planning (available now)
 Measure M – funding for construction (FY26 and FY32 resources)
 ◆ Funding reserved for future phases if the project passes these decision points



35

- > The anticipated leveraged Initial Investment and Modal Program Funding totals \$3.2 billion in potential funds. *This number is projected and is subject to change.*
- > Mr. Cano and Mr. Cálix each provided summaries of recommended initial investment by mode.
 - Projects recommended or initial investment are the 23 projects that are part of the \$449m investment (strongest alignment with the Goals, Vision, Guiding Principles, least Equity Concerns/Community Concerns, closer to implementation).
 - Modal programs are transportation projects that did not score as strong due to planning resources/capacity and need more development work. \$294 M of the \$743 will be used to get these projects implementation ready.
- > Mr. Cohen presented an overview of Community Programs:
 - Community Programs incorporate a range of benefits that are responsive to equity issues facing the LB-ELA Corridor, and which are not addressed through typical transportation infrastructure investments.
 - Some are focused on addressing current burdens that exist as a result of past policy, disinvestment, and infrastructure development.
 - Others are proactive measures to sustain community stability and maximize benefits as projects are implemented in the future.
- 15 Community Programs have been identified by community stakeholders in this process:

CMIP Measure R/M Investment Summary – Community Programs

TOPIC AREA	PROJECT ID	PROJECT NAME
Air Quality/ Community Health	LB-ELA_0192	Bus Electrification Projects
	LB-ELA_0133	LB-ELA Corridor Community Health Benefit Program
	LB-ELA_0191	Zero-Emission Infrastructure for Autos
	LB-ELA_0218	Air Quality Monitoring Stations
Environment	LB-ELA_0134	LB-ELA Corridor Energy Reduction/Greenhouse Gas (GHG) Emissions Reduction Program
	LB-ELA_0187	LB-ELA Corridor “Urban Greening” Initiative
	LB-ELA_0190	Public Art/Aesthetics
Housing Stabilization/ Land Use	LB-ELA_0009	WSAB Transit-Oriented Development Strategic Implementation Plan and Program (TOD SIP)
	LB-ELA_0193	Transit-Oriented Communities/Land Use
	LB-ELA_0194	Homeless Programs
	LB-ELA_0135	Housing Stabilization Policies
Job Creation/ Work Opportunities	LB-ELA_0197	Vocational Educational Programs
	LB-ELA_0195	Targeted Hire Programs
	LB-ELA_0196	Employment/Recruitment Initiatives
	LB-ELA_0186	Economic Stabilization Policies



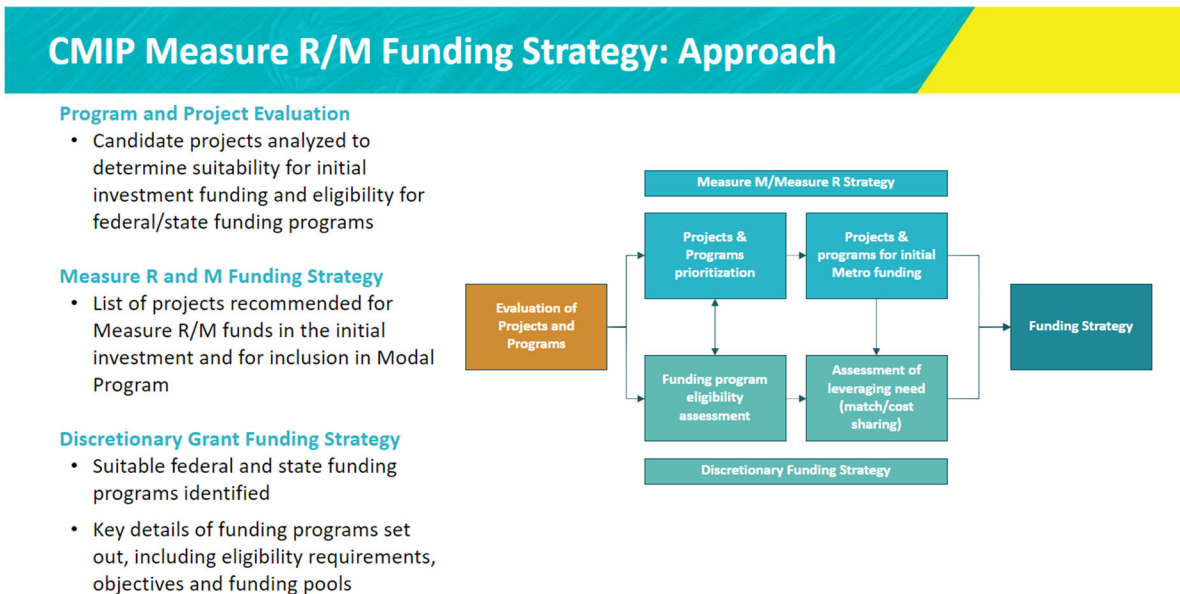
57

- > Mr. Cohen shared the next steps for Community Programs.
 - Potential partners will be engaged to establish Community Program development working groups (similar to the Zero-Emission Truck Working Group).
 - The Project Team will contact potential partners in late January and early February.
 - Community Program working groups will identify existing programs for Metro support, seek additional funding opportunities, define objectives for new programs, and allocate funding based on community needs.
- > For a list of Potential Partners by Community Program Topic Area see slide 60 in **Appendix B**
- > Ms. Morales facilitated a discussion with the Task Force members. Discussion highlights included:
 - A repeated desire to see a written commitment from Metro to ensure that community programs continue to be developed and expedited in the long-term
 - Recognition that communities might not have historically had funding or resources to be ready to implement projects that are needed. Technical assistance and other opportunities will aim to help alleviate these inequalities.
 - Funding will be evaluated to make sure it extends as far as possible.
 - Any Tier 1 project not included in the initial investment is in the modal program and eligible for future funding.
 - Metro will work strategically with CBO and Agency partners to pursue the successful development of community programs.

- Funding pipelines will be continuously developed to adjust to the changing needs of the Corridor

Agenda Item #4: Funding Strategy Framework

- > Mr. Cano presented an overview of the Funding Strategy Approach:



M Metro

- > Mr. Cano provided a breakdown of the Funding Strategy for Measure R and Measure M funds. See slides 67-68 in **Appendix B** for detailed information.
- > Mr. Cano shared the eligibility assessment criteria for Discretionary Funding Programs:
 - The evaluation will consider how likely program outcomes align with the criteria and objectives of said funding programs, including safety, efficiency, sustainability, and equity.
 - Additionally, it will assess how well candidate projects align with targeted infrastructure types, evaluate cost estimates against funding pools, consider local funding availability for leverage, and assess project readiness and development status.
- > To see a complete list of Discretionary Funding Programs see slide 69 in **Appendix B**.

Closing Remarks & Next Steps

- > Ms. De Loza-Gutierrez highlighted that the Project Team will be sharing the Corridor Mobility Investment Plan (CMIP) with the Community over the next 6 weeks for input.
- > Ms. Morales reviewed the upcoming project meeting schedule.
- > Ms. Morales encouraged Task Force members and members of the public to contact Mr. Cano should they have any questions or concerns.
- > The meeting was adjourned at 7:20 pm.

Meeting Format Logistics

- Meeting Format: Zoom Meeting
- Participants: Task Force, CLC, and Members of the Public

Meeting Materials

[Agenda](#)

[Presentation](#)



The Long Beach-East Los Angeles Corridor Mobility Investment Plan

Task Force Meeting #28 Agenda / Agenda de la Reunión del Comité Consultivo #28

Monday, January 22, 2024 / lunes, 22 de enero, 2024

5-7pm

Interpretation in Spanish, Khmer, and Tagalog will be provided.

Se proporcionará interpretación en español, jemer y tagalo.

Webinar Link / Enlace de Reunión: lb-ela-cp-taskforcemeetings.com

Webinar ID / ID de Reunión: 856 5943 9042

Passcode / Contraseña: 5851

- 5:00pm Welcome and Opening Remarks**
Bienvenida y palabras de apertura
- 5:05pm Agenda Item #1: CMIP Overview**
Punto #1 de la Agenda: Panorama del CMIP
- 5:15pm Agenda Item #2: Timeline & Schedule**
Punto #2 de la Agenda: Calendario y cronograma
- 5:25pm Agenda Item #3: Projects for Initial Funding**
Punto #3 de la Agenda: Proyectos para financiación inicial
- 6:25pm Agenda Item #4: Funding Strategy Framework**
Punto #4 de la Agenda: Marco de la estrategia de financiación
- 6:55pm Closing Remarks & Next Steps**
Comentarios finales y próximos pasos
- 7:00pm Adjournment**
Aplazamiento

Zoom Protocols/*Protocolos de Zoom*

- > Click **Raise Hand** in your meeting controls or
 - > **Press*9** on the phone line.
 - > To lower your hand, click **Raise Hand** in your meeting controls.
 - > Comments & questions can also be provided in writing by using the **Chat** function.
 - > The **Chat** button is located on the control panel at the bottom of your screen.
 - > Tech Support - Phone: 323.609.3345 Monitoring, translation support
- > *Haga clic en “Raise Hand” para “Levantar la mano” en los controles de la reunión o*
 - > *Presiona *9 en la línea telefónica.*
 - > *Para bajar la mano, haga clic en “Raise Hand” para “Levantar la mano” en los controles de la reunión.*
 - > *Los comentarios y las preguntas también se pueden proporcionar por escrito mediante la función de Chat.*
 - > *El botón Chat se encuentra en el panel de control en la parte inferior de la pantalla.*
 - > *Llame a la Asistencia Tecnológica por teléfono al 323.609.3345 para ayuda con la traducción*

Interpretation / Interpretación



- This meeting is transmitted in English, Spanish, Khmer and Tagalog.
 - Everyone must choose the preferred language they would like to hear the meeting in
 - Click the **Interpretation** icon in your meeting controls to enter an *English, Spanish, Tagalog, Khmer* room
 - To hear the interpreted language only, click **Mute Original Audio** (Optional)
- *Esta reunión se transmite en inglés, español, jemer y tagalo.*
 - *Todos deben elegir el idioma preferido en el que les gustaría escuchar la reunión.*
 - *Haga clic en el icono de Interpretación en los controles de su reunión para ingresar a una sala en de interpretacion en el inglés, el español, el jemer o tagalo*
 - *Para escuchar solo el idioma interpretado, haga clic en “Mute Original Audio” o “Silenciar audio original” (Opcional)*

Task Force and CLC Member Identification


Identificación de miembros del Comité Consultivo y CLC

Task Force and CLC Members, please change your Zoom screen name to include: Name and Organization/Jurisdiction

Miembros del Comité Consultivo y del Comité de Liderazgo Comunitario, por favor cambien sus nombres de pantalla de Zoom para incluir: Nombre y su organización

1

After launching the Zoom meeting, click on the "Participants" icon at the bottom of the window.



Invite Participants Share Screen

Participants (1)

RB Ryan B... (Host, me) Mute Rename

2

In the "Participants" list on the right side of the Zoom window, hover over your name and click on the "Rename" button.

1

Después de iniciar la reunión de Zoom, haga clic en el icono de participantes en la parte inferior de la ventana



Invite Participants Share Screen

Participants (1)

RB Ryan B... (Host, me) Mute Rename

2

In the "Participants" list on the right side of the Zoom window, hover over your name and click on the "Rename" button.



We're developing a new vision for the
Long Beach-East Los Angeles Corridor Mobility Investment Plan

Welcome!

Task Force Meeting #28

January 22, 2024

Facilitators



Erika C.B. Morales

Partner, Morales + Morales Partners



Robert Cálix

Cal Strategic Management

Metro Project Team



Michael Cano
Countywide Planning &
Development



Avital Barnea
Multimodal Integrated
Planning



Ernesto Chaves
Strategic Innovation



KeAndra Cylear-Dodds
Equity and Race



Lilian De Loza-Gutierrez
Community Relations



Lucy Delgadillo
Highway Programs



Jessica Medina
Equity and Race

Welcome and Objectives

Ground Rules

1. Participate to the fullest of your ability - An inclusive Investment Plan depends on the participation of every stakeholder.
2. Respect others when they are speaking.
3. Listen actively with an ear to understand others' views.
4. If needed, ask questions or for clarifying information from speakers on the subject matter at hand.
5. Do not be afraid to respectfully challenge one another by asking questions but refrain from personal attacks – focus on ideas.

Meeting Objectives

- > Present and engage in a discussion on the Draft Corridor Mobility Investment Plan (CMIP) including:
 - Modal programs
 - Initial funding for projects and programs
 - Funding Strategy Framework
- > Discuss the timeline to submit the Final CMIP to the Metro Board for consideration
 - Review the schedule and next steps
 - Define where we are in the process
 - Define what and when feedback is needed from the Task Force

Detailed Agenda

- 5:00pm** **Welcome and Opening Remarks (5 mins)**
i. Introductions, Ground Rules, Objectives, Agenda
- 5:05pm** **Agenda Item #1: CMIP Overview (10 mins)**
i. Overview
ii. Task Force Discussion
iii. Public Comment
- 5:15pm** **Agenda Item #2: Timeline & Schedule (10 mins)**
i. Overview
ii. Task Force Discussion
iii. Public Comment
- 5:25pm** **Agenda Item #3: Projects for Initial Funding (60 mins)**
i. Overview
ii. Task Force Discussion
iii. Public Comment
- 6:25pm** **Agenda Item #4: Funding Strategy Framework (30 mins)**
i. Overview
ii. Task Force Discussion
iii. Public Comment
- 6:55pm** **Closing Remarks & Next Steps (5 mins)**
i. Upcoming Meetings & Community Engagement
ii. General Public Comment
- 7:00pm** **Adjournment**

Agenda Item #1: Corridor Mobility Investment Plan (CMIP) Overview

Topic Overview: Project Timeline and Schedule

In this section, we will...

- Provide an overview of the Corridor Mobility Investment Plan (CMIP)

Time Target

- 10 minutes

Task Force Actions

- Discuss and ask questions

Corridor Mobility Investment Plan (CMIP)

What is the Corridor Mobility Investment Plan (CMIP)?

The CMIP is a multiyear planning vision:

- Identifies and funds initial implementation-ready project priorities to prepare for leveraging and implementation
- Identifies longer-term project priorities and funds planning / pre-implementation phases leading to leveraging and implementation
- Plans, develops, identifies, and refines remaining projects, programs, strategic initiatives, and equity needs to advance the corridor's Vision, Goals, and Guiding Principles
- Features 15 Community Programs and 5 Modal Programs

LB-ELA Corridor Vision

An equitable, shared I-710 South Corridor transportation system that provides safe, quality multimodal options for moving people and goods that will foster clean air (zero-emissions), healthy and sustainable communities, and economic empowerment for all residents, communities, and users in the corridor.

LB-ELA Corridor Goals



LB-ELA Corridor Guiding Principles

Equity Guiding Principle

"A commitment to: (1) strive to rectify past harms; (2) provide fair and just access to opportunities; and (3) eliminate disparities in project processes, outcomes, and community results."

"The plan seeks to elevate and engrain the principle of Equity across all goals, objectives, strategies, and actions through a framework of Procedural, Distributive, Structural, and Restorative Equity, and by prioritizing an accessible and representative participation process for communities most impacted by the I-710."

Sustainability Guiding Principle

"Development that meets the needs of the present without compromising the ability of future generations to meet their own needs."


"A commitment to the sustainability to satisfy and improve basic social, health, and economic needs/conditions, both present and future, and the responsible use and stewardship of the environment, all while maintaining or improving the well-being of the environment on which life depends."

Task Force Discussion


Public Comment

Public Comment

You will be given **1 minute** to make your question or comment, in order to maximize participation.

- > Click **Raise Hand** or 
- > **Press*9** on the phone line.
- > Comments and questions can also be provided using the **Q&A** function on the control panel.

*Se le dará **1 minuto** para hacer su pregunta o comentario para darles a todos los asistentes la oportunidad de hablar.*

- > *Haga clic en “**Raise Hand**” o *
- > *“**Levantar la mano**” presione ***9** en la línea telefónica.*
- > *Los comentarios y las preguntas también se pueden proporcionar por escrito mediante la función de **Q&A** en el panel de control.*

01:00

mins: secs: type:

Agenda Item #2: Project Timeline & Schedule

Topic Overview: Project Timeline and Schedule

In this section, we will...

- Review the Project Timeline and Schedule leading to the March 2024 submittal of the Final CMIP to the Metro Board

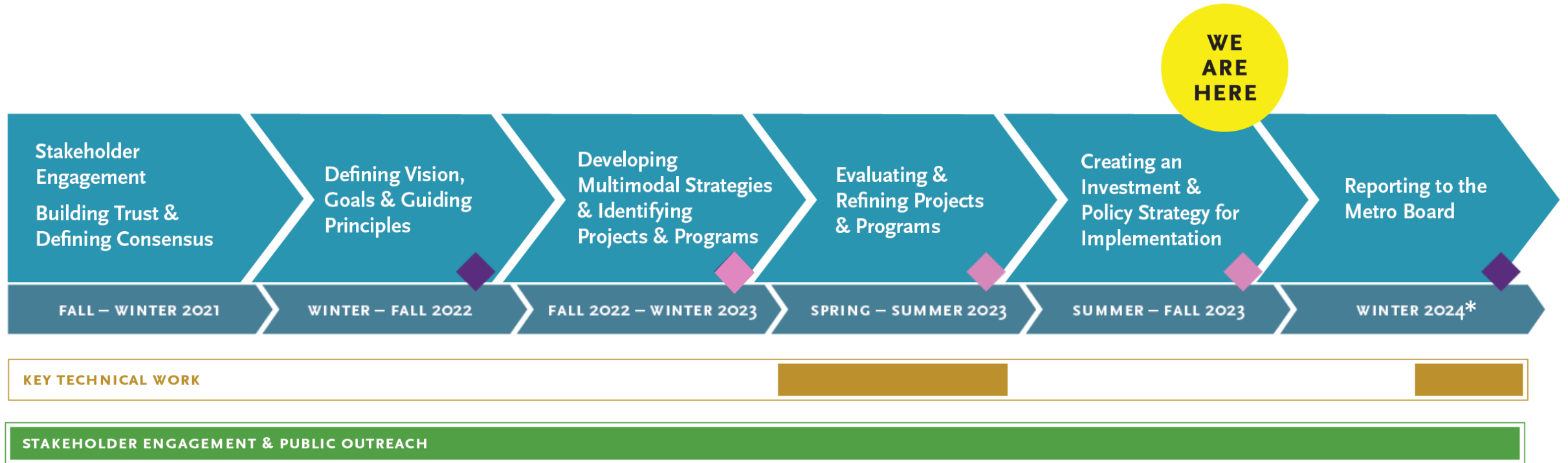
Time Target

- 10 minutes

Task Force Actions

- Discuss and ask questions

Milestones



Long Beach - East Los Angeles Corridor Mobility Investment Plan *Timeline and Schedule*



CLC Meeting *
Thursday, January 18, 5-7pm

> Review Draft Investment Plan

Task Force Meeting *
Monday, January 22, 5-7pm

> Review Draft Investment Plan

Metro Board of Directors
Friday, January 31

>Submit Draft Investment Plan
to Metro Board Box

CLC Meeting *
Thursday, February 15, 5-7pm

CLC Meeting *
Thursday, February 22, 5-7pm

> Vote

Task Force Meeting *
Monday, March 11, 5-7pm

> Vote

>Submit Investment Plan to
Metro Board of Directors


* Virtual Meeting

Task Force Discussion


Public Comment

Public Comment

You will be given **1 minute** to make your question or comment, in order to maximize participation.

- > Click **Raise Hand** or 
- > **Press*9** on the phone line.
- > Comments and questions can also be provided using the **Q&A** function on the control panel.

*Se le dará **1 minuto** para hacer su pregunta o comentario para darles a todos los asistentes la oportunidad de hablar.*

- > *Haga clic en “**Raise Hand**” o *
- > *“**Levantar la mano**” presione ***9** en la línea telefónica.*
- > *Los comentarios y las preguntas también se pueden proporcionar por escrito mediante la función de **Q&A** en el panel de control.*

01:00

mins: secs: type:

Agenda Item #3: Projects for Initial Funding

Topic Overview: Projects for Initial Funding

In this section, we will...

- Review and discuss Projects for Initial Funding based on the project outreach and evaluation processes.

Time Target

- 60 minutes

Task Force Actions

- The Project Team seeks your feedback on these recommendations, in particular:
 - What is your first impression of these recommendations and how do they advance the Vision, Goals, and Guiding Principles of the Task Force?
 - Are there any areas that are not well explained or require additional clarity?

CMIP Measure R/M Investment Summary

Total available Measure R/M Funds: \$743M

Total Measure R/M Investment Summary

Initial Investment Recommendations: \$449M

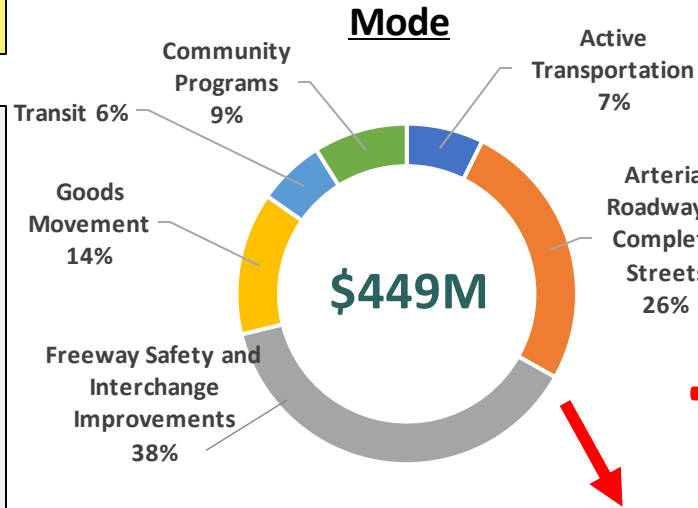
- Development \$69.5M
- Pre-Implementation \$62.5M
- Implementation \$317M*

Modal Program Recommendations: \$294M

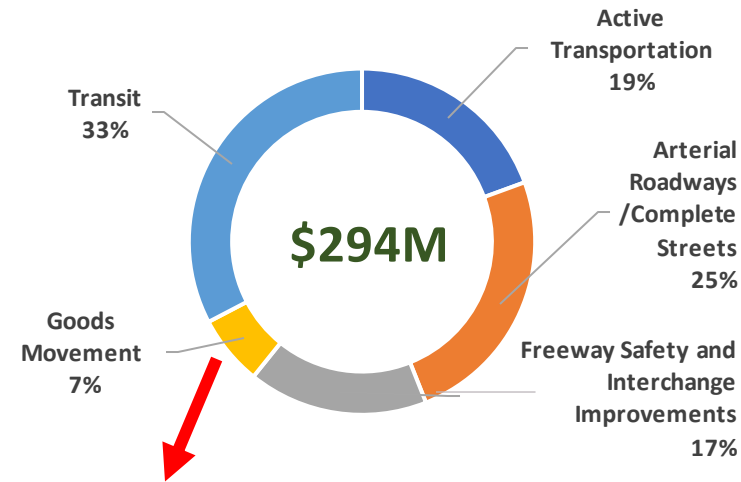
- Development \$22.5M
- Pre-Implementation \$14.7M
- Future Implementation \$256.5M

Total Initial Investment and Modal Programs: \$743M

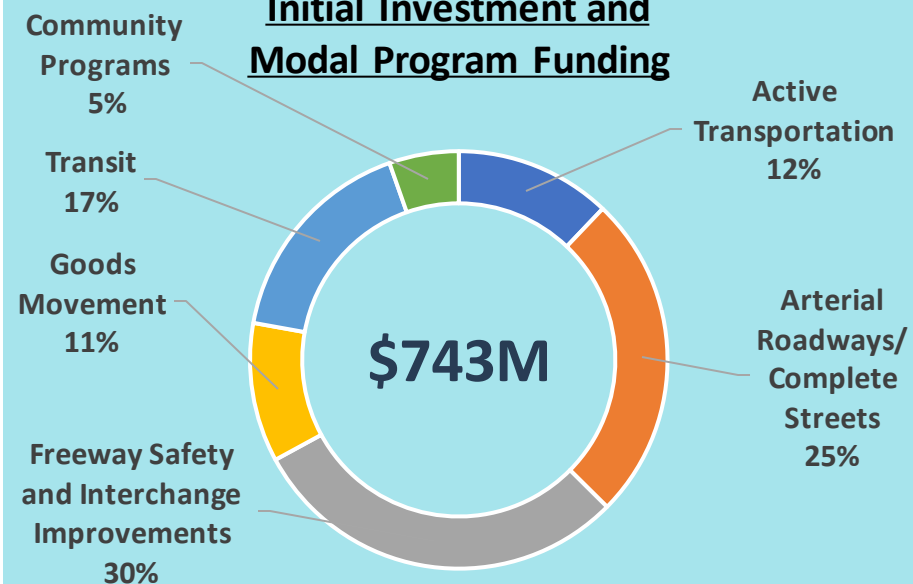
Initial Investment Funding by Mode



Modal Program Funding



Initial Investment and Modal Program Funding

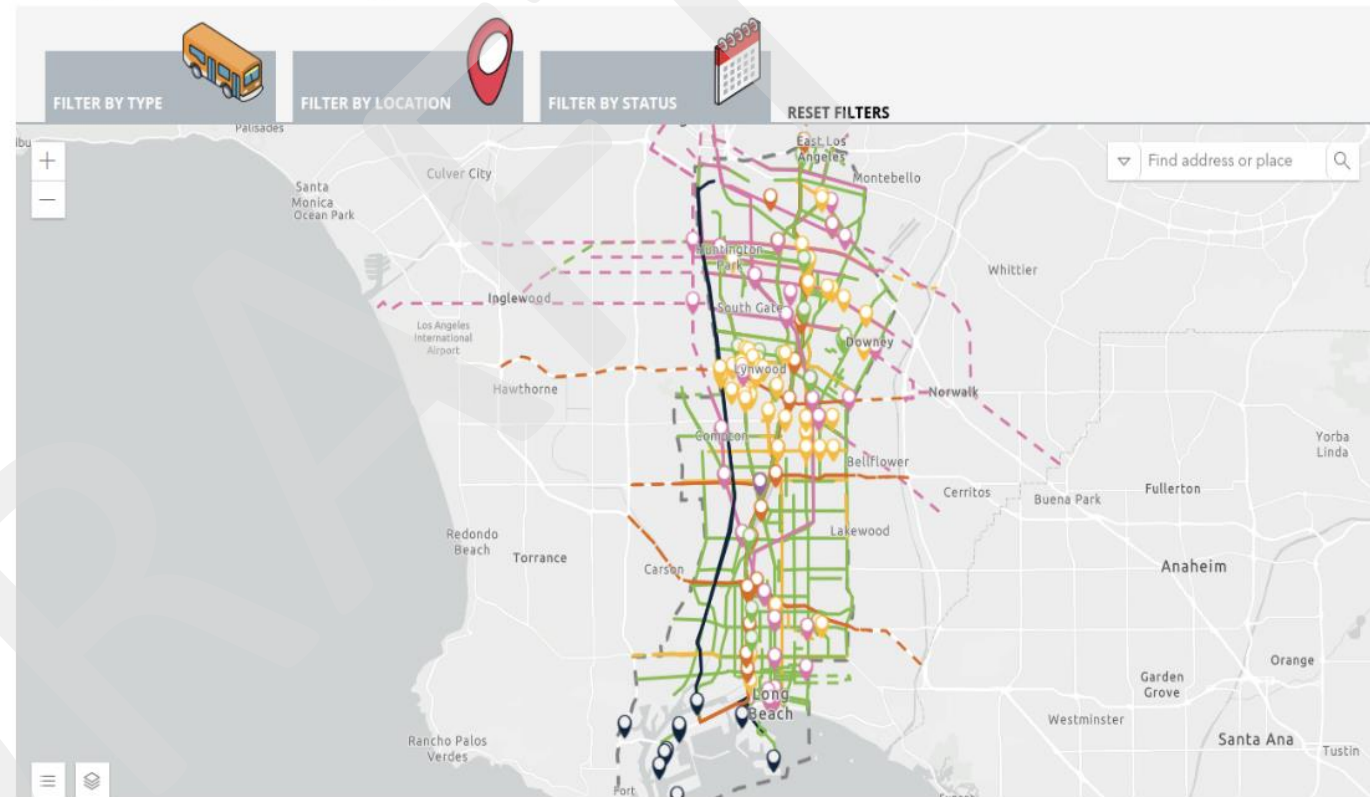


*Includes funding commitments for near - and longer-term projects.

Dashboard – CMIP Measure R/M Projects for Initial Funding

Get the latest information and updates on our projects and let us know your thoughts.

Projects & Programs



Dashboard – Explore Projects in detail and view their performance

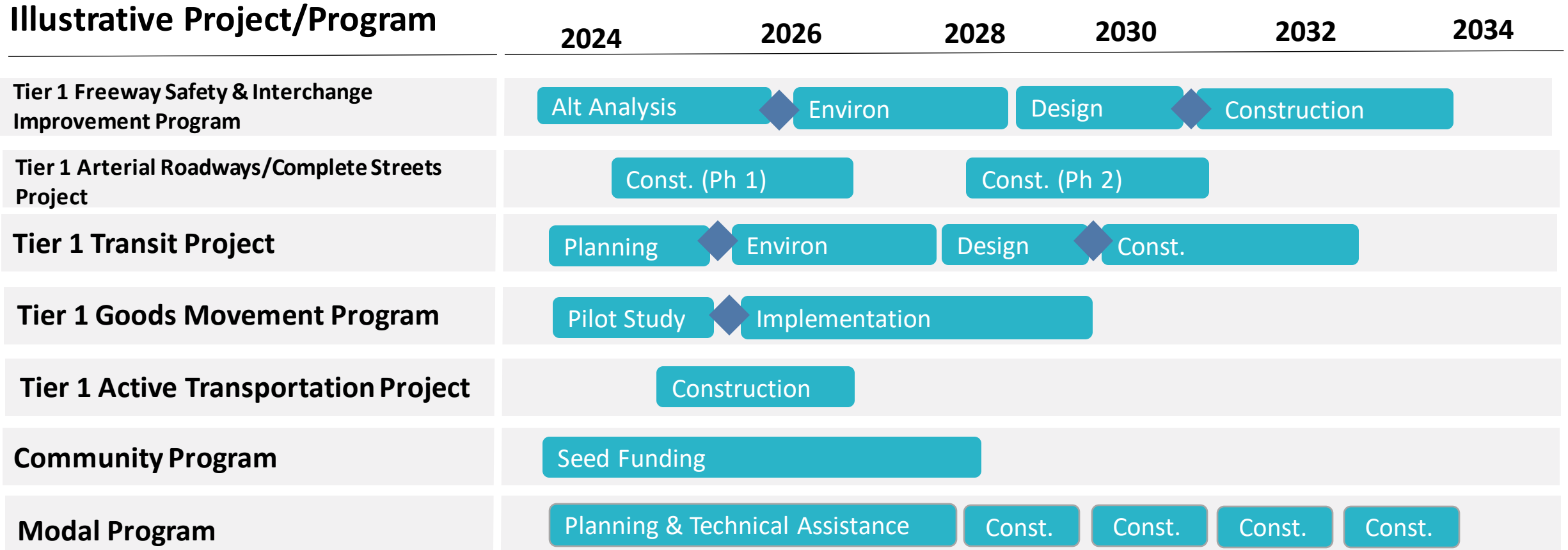
Project	Project Type	Project Subtype	Tier
City of Long Beach 8-to-80 Bikeways	Active Transportation / TDM	Bicycle Routes / Facilities	1
I-710 LA River Bike Path	Active Transportation / TDM	Bicycle Routes / Facilities	2
LA River Path - Central LA	Active Transportation / TDM	Bicycle Routes / Facilities	2
LB-ELA Corridor Bicycle Gap Closur...	Active Transportation / TDM	Bicycle Routes / Facilities	1
Randolph Bike & Pedestrian Project	Active Transportation / TDM	Bicycle Routes / Facilities	2
Randolph Street Bike and Pedestri...	Active Transportation / TDM	Bicycle Routes / Facilities	2
Regionally Significant Bike Projects...	Active Transportation / TDM	Bicycle Routes / Facilities	1
West Santa Ana Branch Bike & Ped...	Active Transportation / TDM	Bicycle Routes / Facilities	1
Micromobility Pilot Project	Active Transportation / TDM	First / Last Mile	2
Blue Line First Last Mile Plan Impr...	Active Transportation / TDM	Pedestrian / First Last Mile	1
City of Long Beach Mid-City Pedest...	Active Transportation / TDM	Pedestrian / First Last Mile	1
Del Amo Pedestrian Gap Closure P...	Active Transportation / TDM	Pedestrian / First Last Mile	2
Enhanced Pedestrian Crosswalk (R...	Active Transportation / TDM	Pedestrian / First Last Mile	2
Hill Street Pedestrian Bridge Overc...	Active Transportation / TDM	Pedestrian / First Last Mile	2
Humphreys Avenue Pedestrian/Bic...	Active Transportation / TDM	Pedestrian / First Last Mile	2

CMIP Measure R/M Initial Funding Example

Project/Program name	Atlantic Complete Streets Corridor [LB-ELA_0057]
Project/Program description	Atlantic Avenue/Boulevard, between Ocean Boulevard and State Route (SR) 60. Reconstruct Atlantic Avenue/Boulevard to establish a Complete Street Corridor, including bicycle facilities, pedestrian facilities and crosswalks, transit stop features and amenities, safety and traffic calming features, landscaping, hardscaping, public art (aesthetic treatments), public green spaces, trees, and water quality features such as bioswales and tree wells.
Project/Program lead	Gateway Cities COG/Cities
Metro role	Support and/or fund
Location	Bell, Commerce, Compton, Cudahy, Long Beach, Lynwood, Maywood, South Gate, Vernon, East Los Angeles, East Rancho Dominguez
Top scoring goals/principles	Air Quality, Community, Mobility
Flags	Equity Flag: Medium <i>See related implementation requirements/guidance below to address equity issues</i> Community Input Consideration (CIC) Flag: Assess potential for roadway reconfiguration to impact existing truck routes and how changes may reroute truck traffic to impact neighboring streets. Maintain existing parking where possible and facilitate alternative parking solutions where street parking reductions are needed.
Modes	Active Transportation, Arterial Roadways, Transit
Phase	Implementation/Pre-implementation

Implementation requirements/guidance	<p>The Atlantic corridor project passes through ten jurisdictions, including Bell, Commerce, Compton, Cudahy, Long Beach, Lynwood, Maywood, South Gate, Vernon, and communities in unincorporated Los Angeles County. Given the differing schedules for this project, with some segments ready for implementation in 1 to 2 years and other sections needing 4 to 5 years before construction, this corridor will require near-term and long-term measure funding. Given the high project cost, this corridor will need to leverage significant funding from state and federal grant programs and will need to be developed in phases.</p> <p>Displacements & Physical Impacts: In general, major arterial roadway redesigns should use the existing right-of-way wherever possible and minimize roadway expansions that require displacements or right-of-way impacts. Wherever these impacts are under consideration, jurisdictions should proactively engage residents, businesses, and property owners to understand site-specific conditions and discuss opportunities for relocation assistance and other community benefits.</p> <p>Construction Impacts: Noise pollution, dust emissions, traffic delays/diversion, and business interruptions should be carefully assessed and planned with mitigation strategies in place.</p>
Potential for packaging	<ul style="list-style-type: none"> Atlantic Bus Only Lane and Transit Signal Prioritization [LB-ELA_0019 and LB-ELA_0146] Mixmaster Traffic signal Improvements (Telegraph/Eastern/Atlantic) [LB-ELA_0071] Atlantic Boulevard widening Over I-5 at Mixmaster Intersection [LB-ELA_0221]
Estimated cost	\$457 million
Funding sources and eligibility	Reconnecting Communities and Neighborhoods (RCN), Active Transportation Program (ATP), Solutions for Congested Corridors (SCCP)
Estimated Metro match (R&M) and eligibility	<p>Minimum local match:</p> <p>0 percent – ATP, SCCP</p> <p>20 percent – RCN (Planning)</p> <p>50 percent – RCN (Capital)</p>
Recommended CMIP investment	\$68.68 million

Concurrent Timeline for Project Development and Implementation (Example)



Measure R – funding for construction

Measure M – funding for planning (available now)

Measure M – funding for construction (FY26 and FY32 resources)

◆ Funding reserved for future phases if the project passes these decision points

CMIP Measure R/M Investment Summary

Total available Measure R/M Funds: \$743M

Total Measure R/M Investment Summary

Initial Investment Recommendations: \$449M

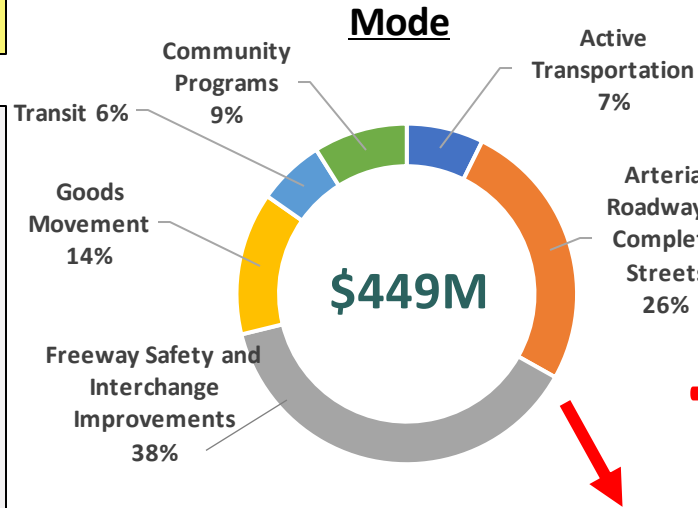
- Development \$69.5M
- Pre-Implementation \$62.5M
- Implementation \$317M*

Modal Program Recommendations: \$294M

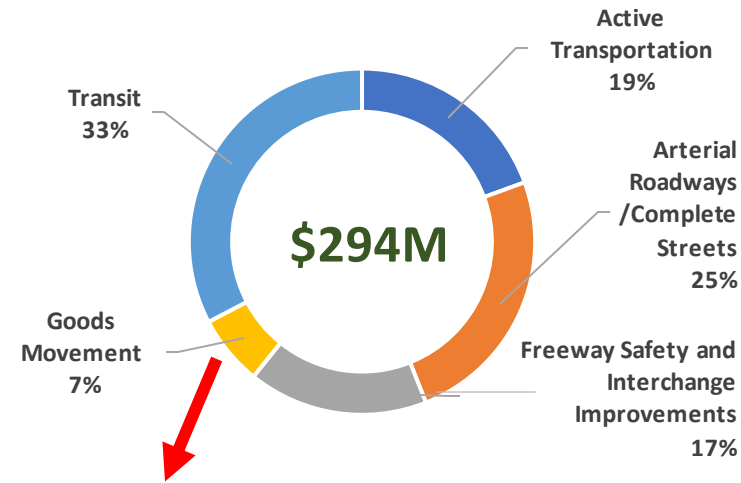
- Development \$22.5M
- Pre-Implementation \$14.7M
- Future Implementation \$256.5M

Total Initial Investment and Modal Programs: \$743M

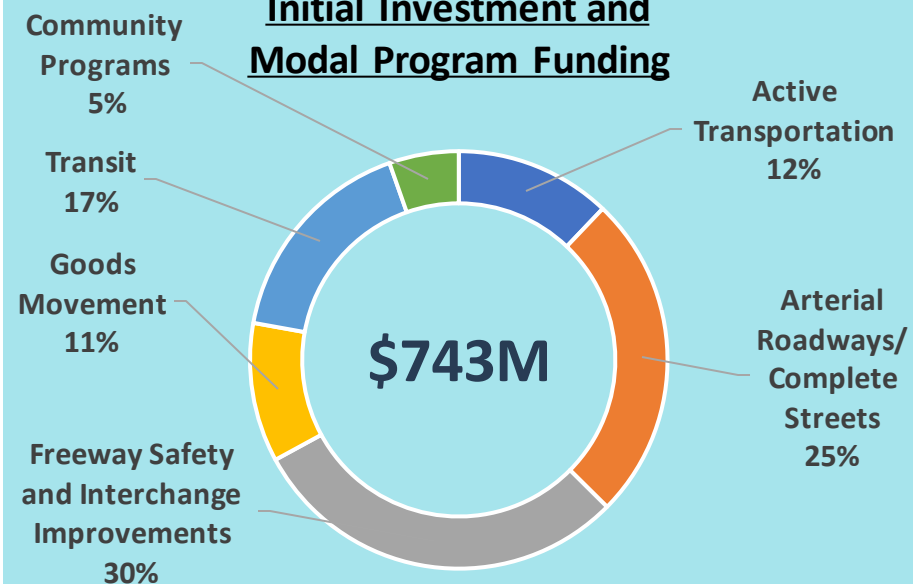
Initial Investment Funding by Mode



Modal Program Funding

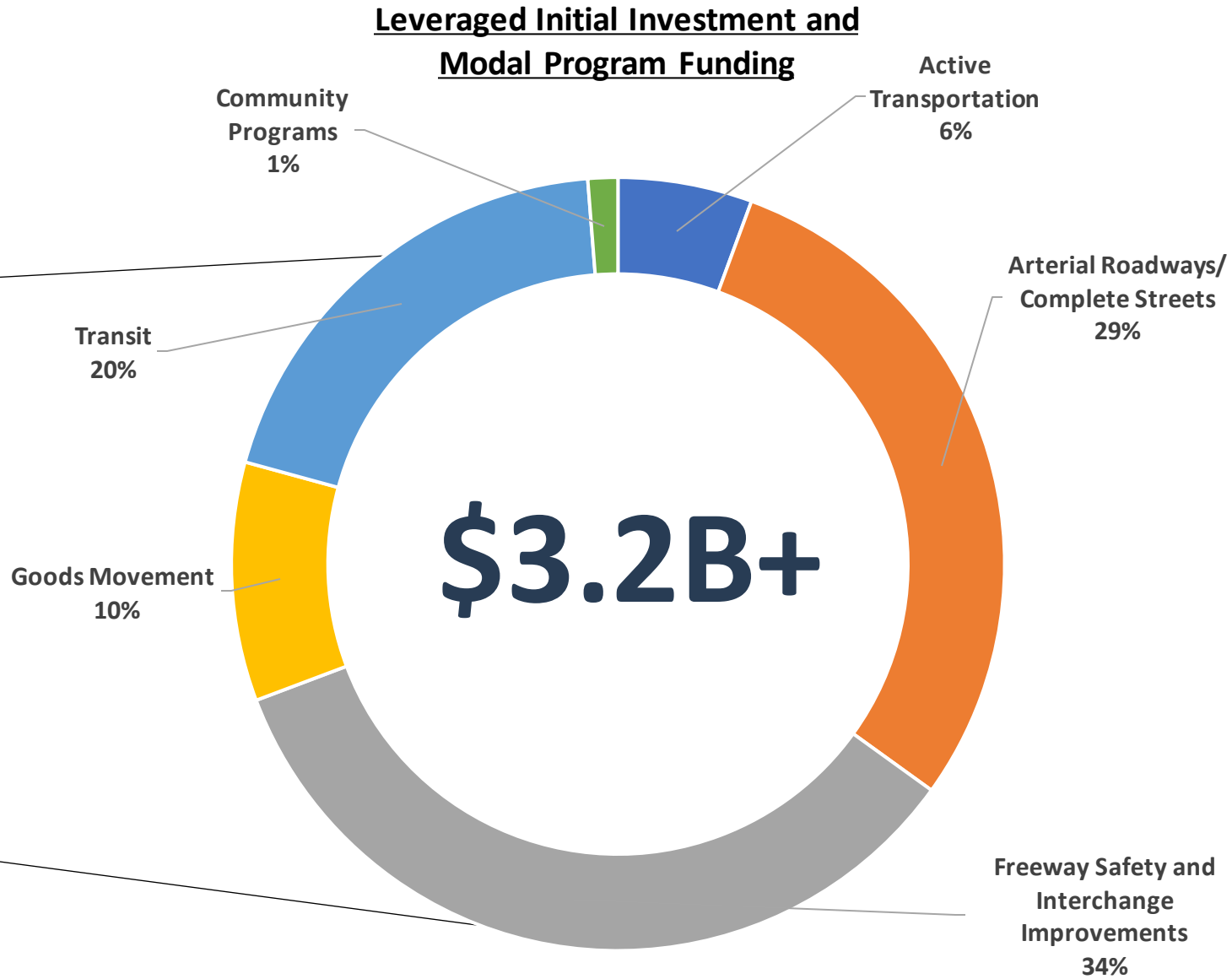
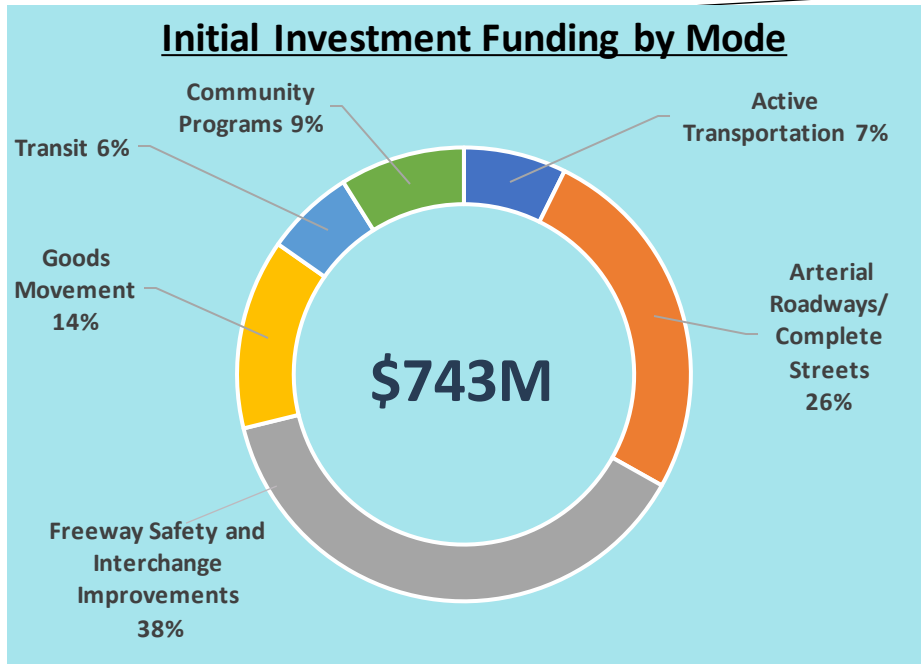


Initial Investment and Modal Program Funding



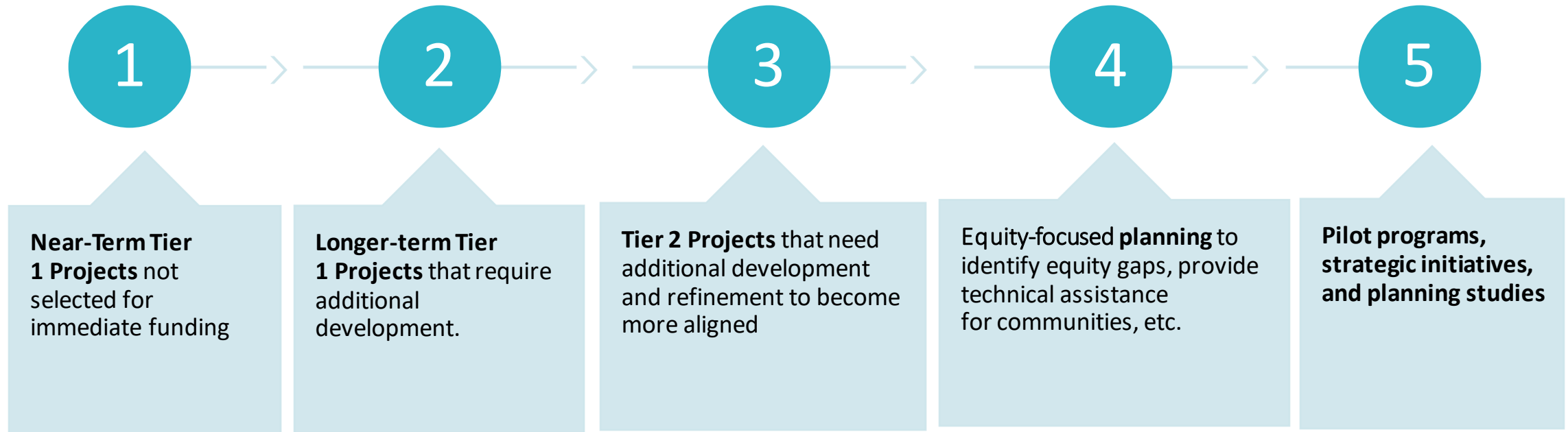
*Includes funding commitments for near - and longer-term projects.

CMIP Measure R/M Investment Summary – Leveraged Funding



CMIP Measure R/M Investment Summary – Modal Programs

The 5 types of projects/programs that are put into Modal Programs include:



CMIP Measure R/M Investment Summary – Modal Programs

MODE	\$ CMIP (M)
Arterial Roadway/Complete Streets	\$72.2
Active Transportation	\$57.1
Freeway Safety and Interchange	\$49.4
Goods Movement	\$19.0
Transit	\$96.0
<i>Total Programmed</i>	\$293.7

CMIP Measure R/M Investment Summary – Freeway Safety and Interchange Improvements

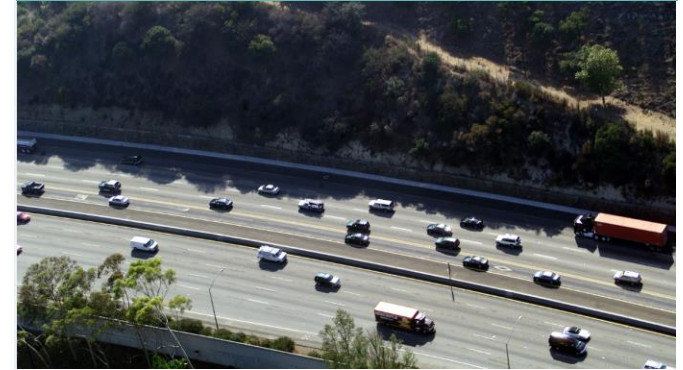
Interchange Improvements



Design Improvements



Auxiliary Lanes



Traffic Signals



Landscaping Features



Sound Wall Improvements



CMIP Measure R/M Investment Summary – Freeway Safety and Interchange Improvements

Initial Investment Recommendations:	\$170.6M
• Development	\$9.0M
• Pre-Implementation	\$39.0M
• Implementation	\$122.6M
Modal Program Recommendations:	\$49.4M
• Development	\$0.0M
• Pre-Implementation	\$2.5M
• Future Implementation	\$46.9M
Total Initial Investment and Modal Programs:	\$220.0M

CMIP Measure R/M Investment Summary – Freeway Safety and Interchange Improvements

Project ID		Name	CMIP Initial Investment (\$ in millions)	Estimated Total Cost* (\$ in millions)	Phase
Various	12 Interchanges + 2 Auxiliary Lanes	Freeway Alternative Analysis**	\$5.0	\$5.0	Development
	Top 3-4 Priority Projects	Freeway CEQA/NEPA Phase***	\$34.0	\$34.0	Pre-implementation
	Top 2-3 Environmentally Cleared Projects	Freeway Construction****	\$114.6	\$573	Implementation
LB-ELA_0156		Traffic Controls at LB-ELA Freeway Ramps	\$10.0	-	Development / Implementation
LB-ELA_0181		Freeway Lids, Caps, Widened Bridge Decks	\$5.0	-	Development
LB-ELA_0157		LB-ELA Particulate Matter (PM) Reduction Pilot Project	\$2.0	-	Development
Freeway Safety and Interchange Improvements Initial Investment			\$170.6		
Freeway Safety and Interchange Improvements Modal Program Investment			\$49.4		
Total Freeway Safety and Interchange Improvements Investment			\$220.0		

* Estimated project costs are totaled from individual city submissions

**LB-ELA Interchange Improvements: I-710/ Firestone, Florence, Willow, Del Amo, Long Beach Blvd, Alondra and Modifications of SB LB-ELA to SR 91 Connectors, Imperial. Anaheim, PCH, Wardlow; LB-ELA Auxiliary Lanes: Willow St to Wardlow St, Del Amo Blvd to Long Beach Blvd; Connector Project Improvements: I-710/I-405, I-710/I-105

***Freeway Alternative Analysis will determine 3-4 priority projects that undergo Freeway CEQA/NEPA phase.

****Freeway CEQA/NEPA Phase will determine top 2-3 Environmentally Cleared Projects.

CMIP Measure R/M Investment Summary – Arterial Roadways/Complete Streets

Intersection Improvements



Traffic Management Features



Traffic Calming Features



Complete Streets



Visual Improvements



CMIP Measure R/M Investment Summary – Arterial Roadways/Complete Streets

Initial Investment Recommendations:	\$115.9M
• Development	\$0.0M
• Pre-Implementation	\$9.0M
• Implementation	\$106.1M
Modal Program Recommendations:	\$72.1M
• Development	\$7.2M
• Pre-Implementation	\$3.6M
• Future Implementation	\$61.3M
Total Initial Investment and Modal Programs:	\$188.0M

CMIP Measure R/M Investment Summary – Arterial Roadways/Complete Streets

Project ID	Name	CMIP Initial Investment (\$ in millions)	Estimated Total Cost* (\$ in millions)	Phase
LB-ELA_0057	Atlantic Complete Street Corridor	\$68.6	\$457.2	Implementation
LB-ELA_0058	Florence Complete Street Corridor	\$24.9	\$124.5	Implementation
LB-ELA_0010	Shoemaker Bridge/Shoreline Drive	\$9.0	\$560.0	Pre-implementation
LB-ELA_0060	Alondra Complete Street Corridor	\$9.0	\$45.0	Implementation
LB-ELA_0061	Slauson Complete Street Corridor	\$3.6	\$18.0	Implementation
LB-ELA_0062	Long Beach Complete Street Corridor	\$0.8	-	Pre-implementation
Arterial Roadways/Complete Streets Initial Investment		\$115.9		
Arterial Roadways/Complete Streets Modal Program		\$72.1		
Total Arterial Roadways/Complete Streets Investment		\$188.0		

**Estimated project costs are totaled from individual city submissions.*

CMIP Measure R/M Investment Summary – Active Transportation

Bike Lanes



Shared-Use Path



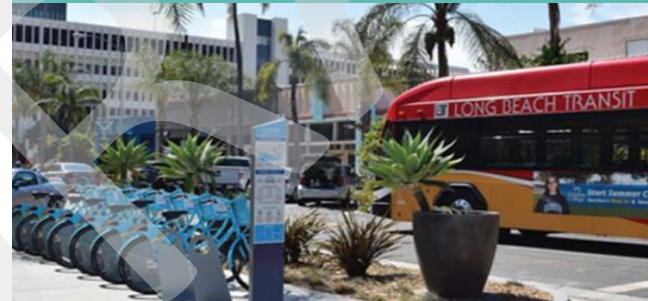
Pedestrian Safety / Amenities



Crossing Safety Enhancements



Micromobility



Bike/Pedestrian Traffic Controls



CMIP Measure R/M Investment Summary – Active Transportation

Initial Investment Recommendations: \$32.9M

- Development \$0.5M
- Pre-Implementation \$4.5M
- Implementation \$27.9M

Modal Program Recommendations: \$57.1M

- Development \$5.7M
- Pre-Implementation \$2.9M
- Future Implementation \$48.6M

Total Initial Investment and Modal Programs: \$90M

CMIP Measure R/M Investment Summary – Active Transportation

Project ID	Name	CMIP Initial Investment (\$ in millions)	Estimated Total Cost (\$ in millions)*	Phase
LB-ELA_0017	Regionally significant bike projects from the Metro Active Transportation Plan	\$15.7	\$41.4**	Development / Implementation
LB-ELA_0008	Blue Line First/Last Mile Plan Improvements	\$9.8	\$13.5	Development / Implementation
LB-ELA_0111	West Santa Ana Branch Bike & Pedestrian Trail	\$3.8	\$7.6**	Development / Pre-implementation
LB-ELA_0006	Rail to River Active Transportation Corridor Segment B	\$3.2	\$6.3	Pre-implementation
LB-ELA_0165	Compton Creek Bike Underpasses	\$0.5	-	Development / Pre-Implementation
Active Transportation Initial Investment		\$32.9		
Active Transportation Modal Program		\$57.1		
Total Active Transportation Investment		\$90.0		

CMIP Measure R/M Investment Summary – Goods Movement

Zero-Emission Truck Program



Zero-Emission Locomotive



Freight Rail Planning



On-Dock Freight Rail Facilities



CMIP Measure R/M Investment Summary – Goods Movement

Initial Investment Recommendations: \$61.0M

- Development \$20.0M
- Pre-Implementation \$5.0M
- Implementation \$36.0M

Modal Program Recommendations: \$19.0M

- Development \$0.0M
- Pre-Implementation \$1.0M
- Future Implementation \$18.0M

Total Initial Investment and Modal Programs: \$80.0M

CMIP Measure R/M Investment Summary – Goods Movement

Project ID	Name	CMIP Initial Investment (\$ in millions)	Estimated Total Cost* (\$ in millions)	Phase
LB-ELA_0004	Long Beach-East Los Angeles Corridor Clean Truck Program (Also referred to as ZE Truck Program)	\$50.0	\$200.0	Implementation
LB-ELA_0023	Clean Truck Infrastructure			
LB-ELA_0217	Freight Rail Electrification Pilot Project	\$10.0	-	Implementation
LB-ELA_0151	Goods Movement Freight Rail Study	\$1.0	-	Implementation
Goods Movement Initial Investment		\$61.0		
Goods Movement Modal Program		\$19.0		
Total Goods Movement Investment		\$80.0		

CMIP Measure R/M Investment Summary – Transit

Transit Service Improvements



Bus Priority Lanes



Quad Gates



Bus Boarding Improvements



Improved Transit Amenities



CMIP Measure R/M Investment Summary – Transit

Initial Investment Recommendations: \$29.0M

- Development \$0.0M
- Pre-Implementation \$5.0M
- Implementation \$24.0M

Modal Program Recommendations: \$96M

- Development \$9.6M
- Pre-Implementation \$4.8M
- Future Implementation \$81.6M

Total Initial Investment and Modal Programs: \$125.0M

CMIP Measure R/M Investment Summary – Transit

Project ID	Name	CMIP Initial Investment (\$ in millions)	Estimated Total Cost* (\$ in millions)	Phase
LB-ELA_0203	Bus Stop Improvements	\$19.0	\$19.0*	Development / Implementation
LB-ELA_0175	Install Quad Safety Gates at all A Line [Blue Line] Crossings	\$5.0	\$5.0*	Development / Pre-implementation
LB-ELA_0168	Compton Transit Management Operations Center Enhancements	\$2.0	\$27.0**	Pre-Implementation / Implementation
LB-ELA_0146	Metro Bus Priority Lane Corridor along Line 260 (Atlantic Blvd.)	\$1.0	-	Pe-implementation
LB-ELA_0144	Metro Bus Priority Lane Corridor along Line 111 (Florence)	\$1.0	-	Pre-implementation
LB-ELA_0141	Metro Bus Priority Lane Corridor along Line 60 (Long Beach Blvd.)	\$0.5	-	Pre-implementation
LB-ELA_0142	Metro Bus Priority Lane Corridor along Line 108 (Slauson)	\$0.5	-	Pre-implementation
Transit Initial Investment		\$29.0		
Transit Modal Program		\$ 96.0		
Total Transit Investment		\$ 125.0		

*Estimated project costs are totaled from individual city submissions.

** Total cost based on installation of a defined number of improvements.

***Project cost based on Blue Line First Last Mile estimate for Compton.

Agenda Item #3.1: Community Programs

CMIP Measure R/M Investment Summary – Community Programs

What are Community Programs?

Community Programs incorporate a range of benefits that are responsive to equity issues facing the LB-ELA Corridor, and which are not addressed through typical transportation infrastructure investments.

- Some are focused on addressing current burdens that exist as a result of past policy, disinvestment, and infrastructure development;
- Others are proactive measures to sustain community stability and maximize benefits as projects are implemented in the future.
- 15 Community Programs have been identified by community stakeholders in this process.

CMIP Measure R/M Investment Summary – Community Programs

TOPIC AREA	PROJECT ID	PROJECT NAME
Air Quality/ Community Health	LB-ELA_0192	Bus Electrification Projects
	LB-ELA_0133	LB-ELA Corridor Community Health Benefit Program
	LB-ELA_0191	Zero-Emission Infrastructure for Autos
	LB-ELA_0218	Air Quality Monitoring Stations
Environment	LB-ELA_0134	LB-ELA Corridor Energy Reduction/Greenhouse Gas (GHG) Emissions Reduction Program
	LB-ELA_0187	LB-ELA Corridor “Urban Greening” Initiative
	LB-ELA_0190	Public Art/Aesthetics
Housing Stabilization/ Land Use	LB-ELA_0009	WSAB Transit-Oriented Development Strategic Implementation Plan and Program (TOD SIP)
	LB-ELA_0193	Transit-Oriented Communities/Land Use
	LB-ELA_0194	Homeless Programs
	LB-ELA_0135	Housing Stabilization Policies
Job Creation/ Work Opportunities	LB-ELA_0197	Vocational Educational Programs
	LB-ELA_0195	Targeted Hire Programs
	LB-ELA_0196	Employment/Recruitment Initiatives
	LB-ELA_0186	Economic Stabilization Policies

CMIP Measure R/M Investment Summary – Community Programs

Initial Investment Recommendations: \$40.0M

- Development \$40.0M
- Pre-Implementation \$0.0M
- Implementation \$0.0M

Modal Program Recommendations: \$0.0M

- Development \$0.0M
- Pre-Implementation \$0.0M
- Future Implementation \$0.0M

Total Initial Investment and Modal Programs: \$40.0M

Next Steps

- > Engage potential partners to establish Community Program development working groups by topic areas (Similar to ZET Working Group)
 - Project team will contact potential partners in late January and early February
 - Reach out to Project Team proactively if interested in participating in one or more working groups (no commitment necessary yet)

- > Community Program working groups will:
 - **Identify existing programs** that Metro can support through funding, grant-writing, technical assistance, or other facilitation roles
 - **Identify additional funding/grant opportunities** for Community Programs ineligible for Measure R/M funding (i.e., no direct transportation nexus)
 - **Define detailed objectives, parameters, and actions** for new Community Programs
 - **Identify funding allocations** within topic areas based on Community Program pathways and funding needs

Potential Partners by Community Program Topic Area

Air Quality/Community Health

- Gateway Cities COG
- SCAQMD
- CARB
- Southern California Clinics Association
- EYCEJ
- LBACA
- SELA Collaborative
- Coalition for Clean Air
- LA County ISD Clean Transportation Team
- Southern California Edison
- LACI
- **Metro Partners: I-710 ZET Program; Metro Bus Electrification**

Housing Stabilization/Land Use

- Gateway Cities COG
- Legal Aid Foundation of Los Angeles
- LA Care
- Fair Housing Foundation
- BASTA Long Beach
- East LA Women's Center
- Fair Opportunity for Change
- Forgotten Children, Inc.
- Jordan's Disciples Community Service
- Kingdom Causes Bellflower
- Restoration Diversion Services
- Salvation Army
- **Metro Partners: TOC Programs; Homeless Outreach Pilot; Room to Work**

Environment

- GCCOG Regional Climate Collaborative
- SCAQMD
- EYCEJ
- CBE
- Compton Community Garden
- Eastmont Community Center
- TreePeople
- GrowGood
- Friends of the LA River
- Caltrans District Art Coordinator
- ARCHES
- SoCalREN
- **Metro Partners: Metro Art Program; LRTP**

Job Creation/Work Opportunities

- LA County Economic Development Corporation Business Support Program
- LA County Department of Workforce Development, Aging and Community Services (WDACS); Office of Small Business
- CALSTART
- ARCHES
- Vocational Schools, Training Centers, and Workforce Development Organizations
- **Metro Partners: WIN-LA; Room to Work; Internship and Entry-Level Trainee Program; E3 (Expose – Educate – Employ); Transportation Career Academy Program**


Task Force Discussion

- > **What is your first impression of these recommendations and how do they advance the Vision, Goals, and Guiding Principles of the Task Force?**
- > **Are there any areas that are not well explained or require additional clarity?**


Public Comment

Public Comment

You will be given **1 minute** to make your question or comment, in order to maximize participation.

- > Click **Raise Hand** or 
- > **Press*9** on the phone line.
- > Comments and questions can also be provided using the **Q&A** function on the control panel.

*Se le dará **1 minuto** para hacer su pregunta o comentario para darles a todos los asistentes la oportunidad de hablar.*

- > *Haga clic en “**Raise Hand**” o *
- > *“**Levantar la mano**” presione ***9** en la línea telefónica.*
- > *Los comentarios y las preguntas también se pueden proporcionar por escrito mediante la función de **Q&A** en el panel de control.*

01:00

mins: secs: type:
 ▼

Agenda Item #4

Funding Strategy Framework

Topic Overview: Funding Strategy Framework

In this section, we will...

- Review and discuss the Funding Strategy Framework

Time Target

- 45 minutes

Task Force Actions

- > What is your first impression of this framework and how do they advance the Vision, Goals, and Guiding Principles of the Task Force?
- > Are there any areas that are not well explained or require additional clarity?

CMIP Measure R/M Funding Strategy: Approach

Program and Project Evaluation

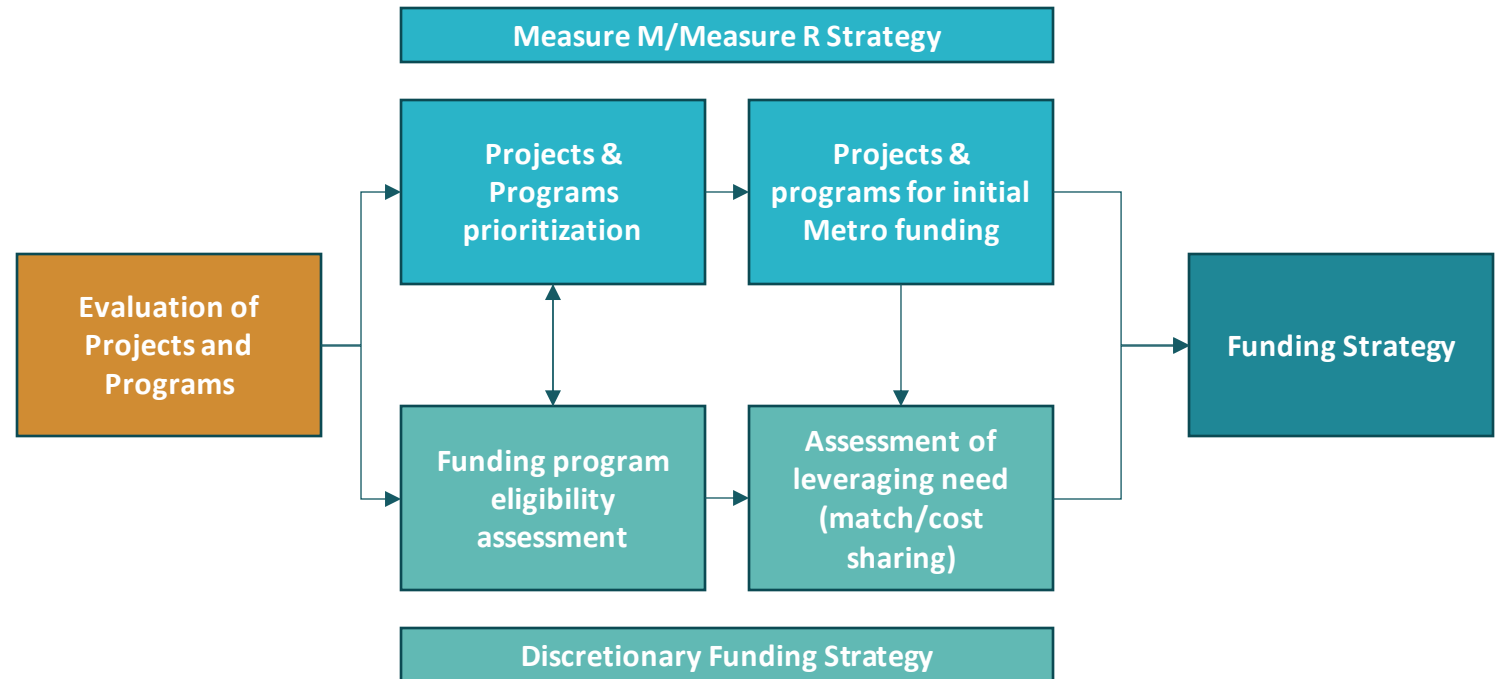
- Candidate projects analyzed to determine suitability for initial investment funding and eligibility for federal/state funding programs

Measure R and M Funding Strategy

- List of projects recommended for Measure R/M funds in the initial investment and for inclusion in Modal Program

Discretionary Grant Funding Strategy

- Suitable federal and state funding programs identified
- Key details of funding programs set out, including eligibility requirements, objectives and funding pools



Funding Strategy: Measure R and Measure M funds

Measure R

- \$243 million of remaining Measure R LB-ELA South highway funds are available for CMIP projects (includes Board-adopted \$50 million commitment of Measure R funds as seed funding for the ZE Truck program). If needed, the ZE Truck program could free up Measure R funds if the program cash flow allows.
- Remaining Measure R funds (\$193 million) are available immediately for eligible projects and modal programs which demonstrate high project readiness, and which align highly with outcomes and benefits sought for the CMIP.

Measure M

- \$500 million of Measure M funds are available over the near to medium term, with \$250 million available in FY 2026 and an additional \$250 million available in FY 2032.

Total funding availability

Source	Immediate (2024)	FY 2026	FY 2032	Total
Measure R*	\$243m			\$243m
Measure M		\$250m	\$250m	\$500m
Total	\$243m	\$250m	\$250m	\$743m

Funding Strategy: Measure R and Measure M funds

Estimated funding needs

- The \$743m of Measure R and Measure M funds will provide important seed funding to progress projects, and/or will be used as local match requirements for regional/state/federal funding programs
- However, there will still be an additional funding need of \$2.5 billion – discretionary funding will be required

Mode <i>(in order of CMIP Measure R/M Investment)</i>	A. Estimated Leveraged Measure R/M Total Investment (\$m)	B. Measure R/M Funding Recommendation (\$m)			Estimated Grant Funding Required (\$m) (A – B.3)
		B.1. Initial Investment	B.2. Modal Program	B.3. Total (B.1+ B.2)	
Freeway Safety and Interchange Improvements	\$1,100.0	\$170.6	\$49.4	\$220.0	\$880.0
Arterial Roadways/Complete Streets	\$940.0	\$115.8	\$72.2	\$188.0	\$752.0
Transit	\$625.0	\$29.0	\$96.0	\$126.0	\$500.0
Goods Movement	\$320.0	\$61.0	\$61.0	\$80.0	\$240.0
Active Transportation	\$180.0	\$32.9	\$57.1	\$90.0	\$90.0
Total	\$3,205.0*	\$449.3	\$293.7	\$703.0	\$2,462.0

*Reflects only leveraging Measure R and M funds. Additional funding and leveraging will be incorporated into the final presentation.

**It is recommended that Community Programs receive \$40 million in initial CMIP Measure investment.

Funding Strategy: Discretionary Funding Programs

Federal Discretionary Programs

Federal Programs

Bridge Investment Program (BIP)
Building Resilient Infrastructure and Communities (BRIC)
Charging and Fueling Infrastructure Grant Program (CFI)
Consolidated Rail Infrastructure and Safety Improvements Program (CRISI)
Infrastructure for Rebuilding America (INFRA)
Port Infrastructure Development Program (PIDP)
Railroad Crossing Elimination Grant Program (RCE)
Rebuilding American Infrastructure with Sustainability and Equity (RAISE)
Reconnecting Communities and Neighborhoods (RCN)
Reduction of Truck Emissions at Port Facilities
Safe Streets and Roads for All (SS4A)
Strengthening Mobility and Revolutionizing Transportation (SMART)
Transit-Oriented Development Planning Grants (TOD)

State Discretionary Programs

State Programs

Low-Carbon Transit Operations Program (LCTOP)
Solutions for Congested Corridors Program (SCCP)
State Active Transportation Program (State ATP)
Trade Corridor Enhancement Program (TCEP)
Transformative Climate Communities (TCC)
Transit and Intercity Rail Capital Program (TIRCP)
Urban Greening Grant Program (UGG)
Local Partnership Program (LPP)

Funding Strategy: Discretionary Funding Programs

Eligibility assessment criteria

- Alignment of likely candidate program and project **outcomes** (safety improvements, travel efficiencies, improvements to sustainability and equity) with **merit criteria and/or stated objectives** of the specific funding programs.
- Attributes of candidate program and project and alignment with the **of infrastructure** (e.g., freeways, active transportation, ports, transit, and complete streets) which specific funding programs target.
- Program and project **cost estimates** evaluated against forecast **discretionary funding pools**, maximum grant award amounts, and **typical award sizes** noted by the funding program.
- Availability of **local (or non-federal, non-state) funding** that can be leveraged, and **minimum match** (cost share) requirements for relevant funding programs.
- General **project readiness** and status of planning and development of candidate projects.


Task Force Discussion

- > What is your first impression of the funding strategy framework and how it advances the Vision, Goals, and Guiding Principles of the Task Force?
- > Are there any areas that are not well explained or require additional clarity?


Public Comment

Public Comment

You will be given **1 minute** to make your question or comment, in order to maximize participation.

- > Click **Raise Hand** or 
- > **Press*9** on the phone line.
- > Comments and questions can also be provided using the **Q&A** function on the control panel.

*Se le dará **1 minuto** para hacer su pregunta o comentario para darles a todos los asistentes la oportunidad de hablar.*

- > *Haga clic en “**Raise Hand**” o *
- > *“**Levantar la mano**” presione ***9** en la línea telefónica.*
- > *Los comentarios y las preguntas también se pueden proporcionar por escrito mediante la función de **Q&A** en el panel de control.*

01:00

mins: secs: type:
 ▼

Closing Remarks and Next Steps

Get Involved!



Get informed!



Sign-up for updates



Access the Project Hub & StoryMap, including the NEW Dashboard



Review the Draft Investment Plan and Other Resources



Join us!



Community Meetings

In-person, virtual, local viewing sites



Information Booths

Local community events



Pop-ups at activity centers

Transit stations/stops, markets, other



Comment



metro.net/projects/i-710-corridor



710corridor@metro.net



213.418.3010



*Michael Cano, Executive Officer,
Countywide Planning & Development
Metro*

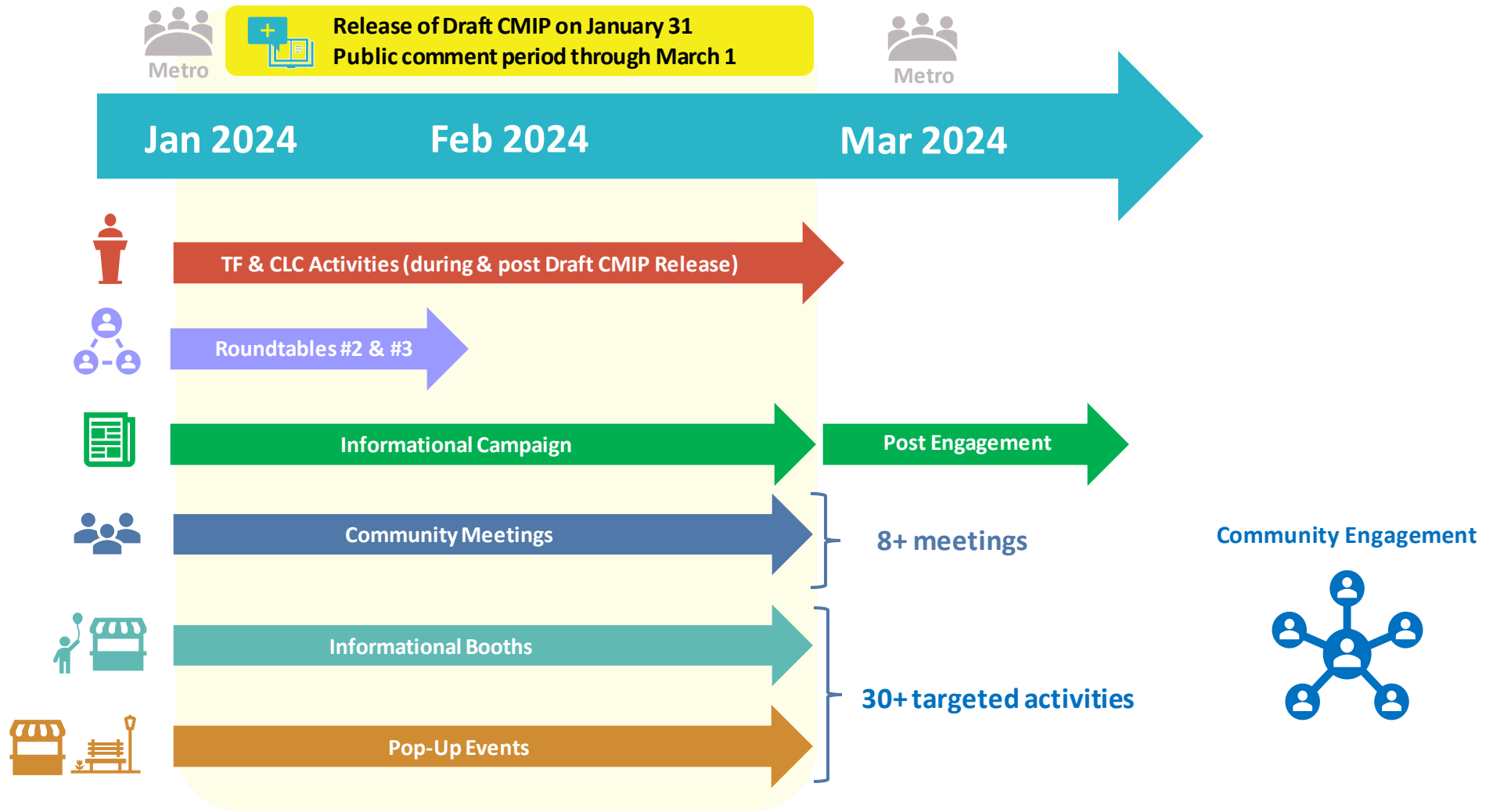
*One Gateway Plaza, MS 99-13-1
Los Angeles, CA 90012*



Learn more about the Draft Corridor Mobility Investment Plan (CMIP) as well as options to engage with us and submit your comments by **Friday, March 1, 2024**: metro.net/lb-ela-cp-hub

Community Engagement Activities

Winter 2024



Draft CMIP Community Meetings

Please join us at the community meetings and spread the word!

To register for the meetings,
please visit
linktr.ee/lbelacorridor or
scan the QR code.



Virtual

- Thursday, February 1, 2024
12-2pm
Streaming Location:
East Los Angeles College (ELA Campus)
- Saturday, February 3, 2024
10-11:30am
Streaming Locations:
Salvation Army Community Center (Long Beach)
East Los Angeles College (South Gate Campus)
- Monday, February 5, 2024
6-8pm
Streaming Location:
Cabrillo High School (Long Beach)
- Tuesday, February 13, 2024
6-8pm
Streaming Locations:
Southeast Rio Vista YMCA (Maywood)
Rancho Los Amigos National Rehabilitation Center "Auditorium" (Downey)

In Person

- **COMMERCE**
Date: Thursday, February 1, 2024
Time: 6-8pm
Bristow Park Community Center
- **LYNWOOD**
Date: Wednesday, February 7, 2024
Time: 6-8pm
Bateman Hall
- **LONG BEACH**
Date: Monday, February 12, 2024
Time: 6-8pm
MOLAA Museum of Latin American Art, Viva Event Center
- **COMPTON**
Date: Wednesday, February 21, 2024
Time: 6-8pm
East Rancho Dominguez Park

Notification & Community Engagement Activities



Notification Activities



Flyers & Posters



Door-to-door notices



Phone Banking



Banners & Lawn Signs



Eblasts/e-newsletters



Notification Toolkit



Local Announcements



Social media posts



Social media ads



Website / StoryMap



Other activities

Engagement Activities



Event information booths



Pop-up outreach booths



Transit-intercepts



Business Corridor Outreach



School Outreach



CBO Co-hosted meetings



Other outreach efforts

Project Awareness Campaign E-Newsletters & StoryMap Updates



> E-newsletter / StoryMap Updates

- Monthly
- Ongoing updates

> StoryMap content (available now)

- Project overview / history
- Current Conditions
- Interactive map
- Community Stakeholder Partners and Engagement to date
- CBO Partnerships

> Start exploring the StoryMap!

Visit: metro.net/lb-ela-cp-hub



Current Condition Map

Demographics

- Median Household Income
- Unemployment Rate
- Median Age
- Race and Ethnicity
- Population Density

Transportation

- High Quality Transit Areas*
- Metro Bus Lines
- Long Beach Transit
- County Bikeways
- County Strategic Truck Arterial Network

Environmental

- Urban Heat Island Effect

The map displays the Long Beach area, including parts of Compton, Lynwood, and Downey. It features major highways like I-10, I-710, and I-405. The map is overlaid with various data layers, including transit lines (Metro Bus Lines, Long Beach Transit), county bikeways, and county strategic truck arterial networks. Environmental data like Urban Heat Island Effect is also visible. A scale bar at the bottom right indicates 2 miles.

General Public Comment


General Public Comment

You will be given **2 minutes** to make your question or comment, in order to maximize participation.



- > Click **Raise Hand** or
- > **Press*9** on the phone line.
- > Comments and questions can also be provided using the **Q&A** function on the control panel.

*Se le dará **2 minutos** para hacer su pregunta o comentario para darles a todos los asistentes la oportunidad de hablar.*

- > Haga clic en **“Raise Hand”** o 
- > **“Levantar la mano”** presione ***9** en la línea telefónica.
- > Los comentarios y las preguntas también se pueden proporcionar por escrito mediante la función de **Q&A** en el panel de control.

02:00

mins: secs: type:

Upcoming Meeting Schedule

LB-ELA Meetings

Equity Working Group Meeting #15 – *Virtual Meeting*

Thursday, February 8, 5-7pm

CLC Meeting #25 – *Virtual Meeting*

Thursday, February 15, 2024, 5-7pm

Zero-Emission Truck Working Group Meeting #20 – *Virtual Meeting*

Tuesday, February 20, 2024, 1-3pm

CLC Meeting #25.5 – *Virtual Meeting*

Thursday, February 22, 2024, 5-7pm

Task Force Meeting #29 – *Virtual Meeting*

Monday, March 11, 2024, 5-7pm

For the most updated list of meeting dates, please visit:

<https://www.metro.net/projects/lb-ela-corridor-plan/>

Stay connected to this project



Michael Cano
Executive Officer
Countywide Planning & Development
LA Metro
One Gateway Plaza, MS 99-13-1
Los Angeles, CA 90012



213.418.3010 W
213.305.0423 C



710corridor@metro.net



<https://www.metro.net/projects/lb-ela-corridor-plan/>



@metrolosangeles



losangelesmetro

Thank you!

**710 Task Force Meeting #28
Monday, January 22, 2024**

NAME	QUESTION/COMMENT	AGENDA SECTION
Fernando Gaytan	Are community programs not being considered for money that will be reserved to ensure implementation that will benefit from development later? Are Community Programs not in Modal Programs?	Agenda Item #2: Timeline & Schedule
Laura Cortez	What is transit? Is that public transpo?	Agenda Item #2: Timeline & Schedule
Fernando Gaytan	Are there any reserves for future funding for those?	Agenda Item #2: Timeline & Schedule
Sharon Weissman	Can you please explain the difference in numbers between slide 43 and slide 46?	Agenda Item #3: Projects for Initial Funding
Fernando Gaytan	Is the Particulate Matter funding tied to a study for the 2million?	Agenda Item #3: Projects for Initial Funding
Dr. Joe Lyou	I encourage Metro to work with CTC staff on non-traditional funding sources for active transportation, complete streets, public transit, and ZE freight. See, for example, the various active transportation projects funded though non-traditional means at https://catc.ca.gov/-/media/ctc-media/documents/programs/atp/2020/funding-programs-that-fund-active-transportation-a11y.pdf	Agenda Item #3: Projects for Initial Funding
Alberto Campos	For projects partially funded- I agree with Laura. I am concerned for projects that are not ready to be funded and might be ready later, securing funds will be challenging if cities or orgs will be tasked to secure funding. Cities and CBOs in Southeast LA are challenged with capacity. Happy to further discuss strategies to ensure entries have the support and capacity to secure funding.	Agenda Item #3: Projects for Initial Funding
Mark Jolles (Member of the Public)	Can you report to Supervisor Hahn and the Metro Board how many minutes of this meeting were Task Force and public comments and how many minutes were staff reading powerpoints, making reports, and comments and responses to Task Force and public comment?	Agenda Item #4: Funding Strategy Framework
Mark Jolles (Member of the Public)	I've seen similar projects in other cities where they had corridors initially put in & there was a lot of environmental injustice. I think this committee has to be careful that this is a win-win for everyone and doesn't take from one group to give to another. In other projects they were very careful to make sure if someone lost out somehow, that it was mitigated & no one got the short end of the stick. (Mark is interested in the LA River, from Culver City)	Agenda Item #1.2: CMIP Overview ii. Public Comment

**710 Task Force Meeting #28
Monday, January 22, 2024**

<p>Mark Jolles (Member of the Public)</p>	<p>I talked to the board about this. Can you add the term 'economic development plan'. I know when you get to federal funding they like to see what the return is. Even if it's benefits of open space or something intangible like that, they want it to be measured from an economic perspective. When I was involved in similar work in San Francisco improving the freeway it brought in a lot of new investment. The government likes to see that in funding.</p>	<p>Agenda Item #2: Timeline & Schedule ii. Public Comment</p>
<p>Luke Klipp</p>	<p>I want to echo the acknowledgement of the comprehensiveness of the work we have all done. It's unlike anything most of us have been through before. It is a meaningful moment for this region, for this corridor. In several of these funding categories it would seem to me there's the possibility of other local dollars that Metro has at its discretion that might be available for some of these projects. Atlantic complete streets is BRT corridor. Metro has said it's one of the top BRT corridors. Want to be sure we aren't missing local funding sources.</p>	<p>Agenda Item #3: Projects for Initial Funding i. Task Force Discussion</p>
<p>Kerry Cartwright</p>	<p>Knowing the report is coming forward, more than 1 minute for TF members to speak should be allowed. Can Michael elaborate on the rationale for not defining specific projects for the full amount and identifying certain amounts in each of the categories as 'to be determined'?</p>	<p>Agenda Item #3: Projects for Initial Funding i. Task Force Discussion</p>
<p>Kerry Cartwright</p>	<p>I suppose this is all going to be documented in the report. Were there any project identified as Tier 1 that have not been identified specifically to be funded in the initial investment?</p>	<p>Agenda Item #3: Projects for Initial Funding i. Task Force Discussion</p>
<p>Laura Cortez</p>	<p>Something that was not clear and needs more explanation is the target percentile range. I am concerned about how 'readiness' is defined. Does this include the flags, does this include the problematic areas that the community has laid out? The structure being focused on things that are 'ready' does not feel very equitable. Our neighborhoods have a history of disinvestment and so are the least ready. We are trying to get ready. Feels like we're being left on the back burner because this funding has a timeline. What are the equity tools? I hear about commitment but we keep kicking the can down the road in terms of establishing actual structures. How are we ensuring a commitment now? I hear a verbal commitment from Metro but I want to see a written commitment to the long-term with these projects and that they will be expedited and that they are rooted in community. Additionally, I am sad to see that active transit, transportation, and community programs are such small percentages. When we talk about equity and community benefits, this is what we talk about.</p>	<p>Agenda Item #3: Projects for Initial Funding i. Task Force Discussion</p>

710 Task Force Meeting #28
Monday, January 22, 2024

<p>Marlin Dawoodjee Vargas</p>	<p>I want to voice my concern with this. It almost seems that the community programs are a little detached from the process that other projects are going through. Since some of these projects seem to be handed off to community orgs, when will those community orgs be identified? What will be the process for selecting them? Does that timeline follow the same January 31 timeline (in terms of when we will get that information) as the other projects? I don't want these community projects to be pushed down the timeline. What structure will we have set in place so Metro will hold the community orgs accountable?</p>	<p>Agenda Item #3: Projects for Initial Funding i. Task Force Discussion</p>
<p>Mark Jolles (Member of the Public)</p>	<p>Can you report to Supervisor Hahn how many of these minutes were used for staff reports vs stakeholder comments? It seems like it is kind of discouraging public participation. Secondly, this 710 freeway was not part of the original interstate system. The federal government has recognized a lot of those interstate freeways were mistakes. I don't think community desires are compatible with maintaining the 710 freeway. Did it occur to the community that the option to remove the 710 exists?</p>	<p>Closing Remarks & Next Steps</p>