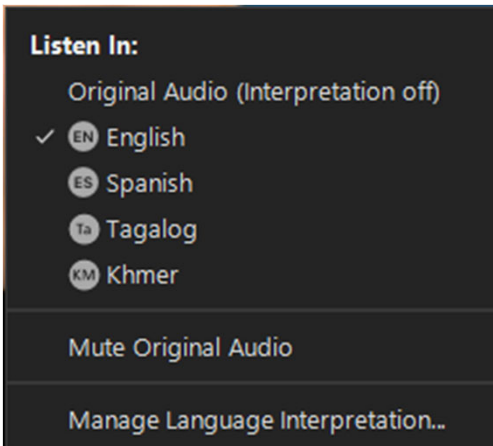


We're developing a new vision for the
Long Beach-East Los Angeles Corridor Mobility Investment Plan



Interpretation/Interpretación



- > This meeting is transmitted in English, Spanish, Khmer and Tagalog.
 - > Everyone must choose the preferred language they would like to hear the meeting in
 - > Click the **Interpretation** icon in your meeting controls to enter an *English, Spanish, Tagalog, Khmer* room
 - > To hear the interpreted language only, click **Mute Original Audio** (Optional)
- > *Esta reunión se transmite en inglés, español, jemer y tagalo*
 - > *Todos deben elegir el idioma preferido en el que les gustaría escuchar la reunión*
 - > *Haga clic en el icono de **Interpretación** en los controles de su reunión para ingresar a una sala virtual para la interpretación al inglés, español, jemer o tagalo*
 - > *Para escuchar solo el idioma interpretado, haga clic en “**Mute Original Audio**” para “**Silenciar audio original**” (Opcional)*

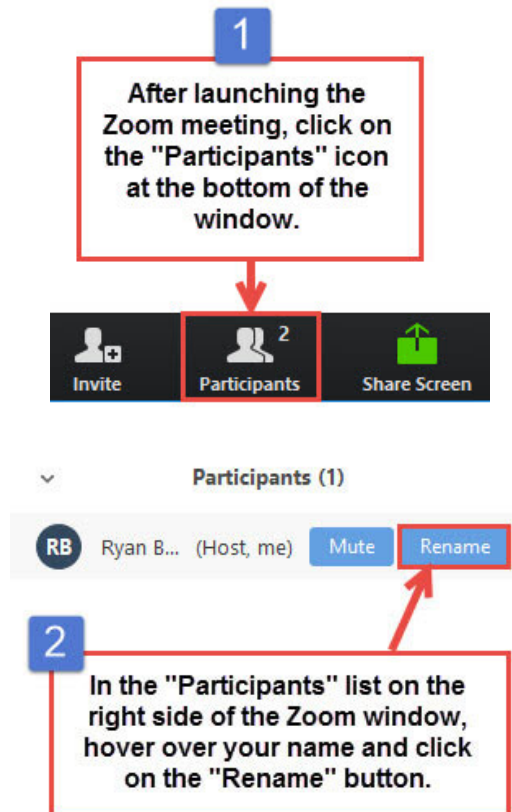
Zoom Protocols/*Protocolos de Zoom*

- > Click **Raise Hand** in your meeting controls or
- > **Press*9** on the phone line.
- > To lower your hand, click **Raise Hand** in your meeting controls.
- > Comments & questions can also be provided in writing by using the **Q&A** function.
- > The **Q&A** button is located on the control panel at the bottom of your screen.
- > Tech Support - Phone: 323.609.3345
Monitoring, translation support

- > *Haga clic en “**Raise Hand**” para “**Levantar la mano**” en los controles de la reunión o*
- > ***Presiona *9** en la línea telefónica.*
- > *Para bajar la mano, haga clic en “**Raise Hand**” para “**Levantar la mano**” en los controles de la reunión.*
- > *Los comentarios y las preguntas también se pueden proporcionar por escrito mediante la función de **Q&A**.*
- > *El botón **Q&A** se encuentra en el panel de control en la parte inferior de la pantalla.*
- > *Llame a la Asistencia Tecnológica por teléfono al 323.609.3345 para ayuda con la traducción*

Task Force and CLC Member Identification

Task Force and CLC Members, please change your Zoom screen name to include: Name and Organization/Jurisdiction



Detailed Agenda

5pm Welcome and Opening Remarks

- i. Introductions, Ground Rules, Objectives, Agenda

5:05pm Agenda Item #1: Project Team Update

- i. Coordinating Committee Recap
- ii. Special Combined Meeting of the Task Force and Community Leadership Committee Recap
- iii. Task Force Discussion
- iv. **Public Comment**

5:25pm Agenda Item #2: Multimodal Strategies, Projects, and Programs (MSPP)

Overview

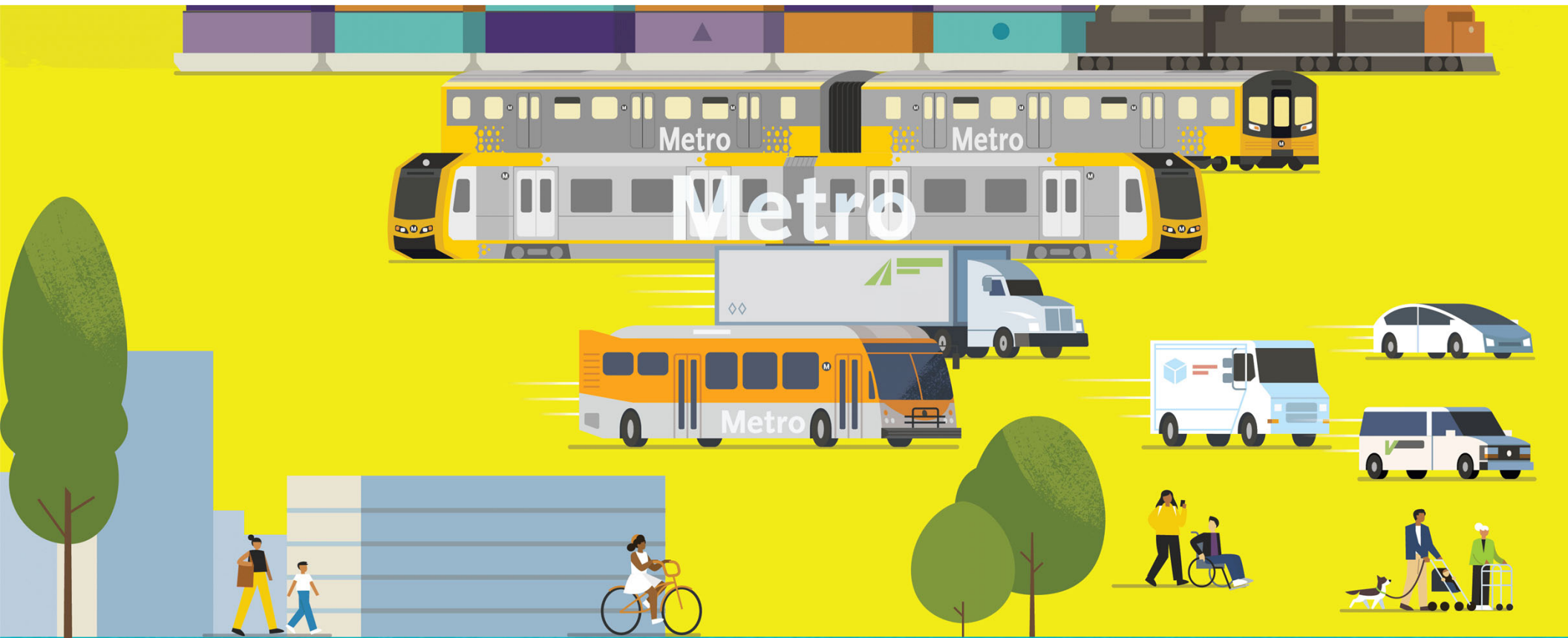
- i. Survey and Interactive Mapping Tool Results
- ii. Key Dates and Upcoming Steps
- iii. Task Force Discussion
- iv. **Public Comment**

5:50pm Agenda Item #3: MSPP Preliminary Evaluation Criteria

- i. Equity Working Group Input
- ii. CLC Input
- iii. Evaluation Criteria Overview
- iv. Task Force Discussion
- v. **Public Comment**

6:50pm Closing Remarks and General Public Comment

7pm Adjournment



We're developing a new vision for the
Long Beach-East Los Angeles Corridor Mobility Investment Plan

Welcome!

Task Force Meeting #15

December 12, 2022



Facilitator



Erika C.B. Morales

Partner, Morales + Morales Partners

Metro Project Team



Michael Cano

Countywide Planning & Development
Federal/State Policy & Programming



KeAndra Cylear Dodds

Equity and Race



Ernesto Chaves

Highway Programs



Lilian De Loza-Gutierrez

Community Relations

Task Force Roster

	AGENCY	LEAD	ALTERNATE
1	Access Services, Inc.	Randy Johnson	Steven Wrenn
2	Alameda Corridor Transportation Authority (ACTA)	Michael Leue	
3	Burlington Northern Santa Fe (BNSF) Railway	Lena Kent	
4	California Air Resources Board (CARB)	Robert Krieger	
5	CALSTART	Alycia Gilde	Niki Okuk
6	City of Bell Gateway GCCOG Ad Hoc Committee	Councilmember Ali Saleh	Maria Davila
7	City of Commerce GCCOG Ad Hoc Committee	Mayor Oralia Rebollo	Kevin Lainez
8	City of Cudahy GCCOG Ad Hoc Committee	Mayor Elizabeth Alcantar	Marisela Santana
9	City of Long Beach GCCOG Ad Hoc Committee	Councilmember Suely Saro	Roberto Uranga
10	City of Los Angeles	Dan Rodman	Chet Edelman
11	Coalition for Clean Air	Chris Chavez	Commissioner Joe Lyou
12	Communities for a Better Environment (CBE)	Jennifer Ganata & Dilia Ortega (co-leads)	Ambar Rivera
13	County of Los Angeles, Supervisorial District 1	Martin Reyes	Aydin Pasebani
14	County of Los Angeles, Supervisorial District 2	Lilly O'Brien-Kovari	
15	County of Los Angeles, Supervisorial District 4	Luke Klipp	Viviana Gomez
16	Earthjustice	Fernando Gaytan	Adrian Martinez
17	East Yard Communities for Environmental Justice (EYCEJ)	Taylor Thomas	Laura Cortez
18	Harbor Trucking Association (HTA)	Matt Schrap	Robert Loya
19	LA County Business Federation (BizFed)	Chris Wilson	
20	LA County Department of Public Works	Steve Burger	Elaine Kunitake/Edel Vizcarra
21	LA County Economic Development Corporation	Stephen Cheung	
22	LA Unified School District	Fidencio Gallardo	
23	Legal Aid Foundation of LA-Long Beach (LAFLA-LB)	Ghirlandi Guidetti	Angela M. Turner
24	Long Beach Alliance for Children with Asthma (LBACA)	Sylvia Betancourt	Marlin Dawoodjee Vargas
25	Long Beach Transit (LBT)	Lisa Patton	Marisol Barajas
26	METRANS Transportation Consortium	Dr. Genevieve Giuliano	
27	Metrolink (Southern California Regional Rail Authority)	Roderick Diaz	David Huang
28	National Resources Defense Council (NRDC)	Natalia Ospina	Najah Louis/Kimberly Leefatt
29	Pacific Merchant Shipping Association (PMSA)	Michele Grubbs	Thomas Jelenic
30	Port of Long Beach (POLB)	Comm. Sharon Weissman	Theresa Dau-Ngo
31	Port of Los Angeles (POLA)	Kerry Cartwright	Tony Gioiello
32	South Coast Air Quality Management District (AQMD)	Dr. Aaron Katzenstein	Dr. Sarah Rees
33	Southeast Los Angeles (SELA) Collaborative	Dr. Wilma Franco	Alberto Campos
34	Southern California Association of Governments (SCAG)	Scott Strelecki	Alison Linder
35	Total Transportation Services, Inc. (TTSI)	Tony Williamson	
36	Union Pacific (UP) Railroad	Lupe Valdez	
37	USC Equity Research Institute (ERI)	Edward Muna	Dr. Manuel Pastor

	AGENCY	EX - OFFICIO
1	California Endowment	Gisele Fong
2	CSULB / CiTT	Tom O'Brien
3	Gateway Cities Council of Governments	Nancy Pfeffer
4	Gateway Cities Council of Governments	Marisa Perez
5	LA Customers Brokers & Freight Forwarders Association, Inc.	Dan Meylor
6	LA Customers Brokers & Freight Forwarders Association, Inc.	Dan Monnier
7	Long Beach Residents Empowered (LIBRE)	Leanna Noble
8	U.S. Environmental Protection Agency, Region 9	Morgan Capilla
9	U.S. Environmental Protection Agency, Region 9	Andrew Zellingner
10	Watson Land Company	Mathew Means
11	BREATHE LA County (Breathe LA)	Tigran Agdaian
12	BREATHE LA County (Breathe LA)	Ivan Fonseca
13	International Brotherhood of Teamsters, Local Union 848	Eric Tate

Ground Rules

1. Participate to the fullest of your ability - An inclusive Investment Plan depends on the participation of every stakeholder.
2. Respect others when they are speaking.
3. Listen actively with an ear to understand others' views.
4. If needed, ask questions or for clarifying information from speakers on the subject matter at hand.
5. Do not be afraid to respectfully challenge one another by asking questions but refrain from personal attacks – focus on ideas.

Meeting Objectives

- > Receive feedback on the first in-person hybrid Special Combined Task Force and CLC Meeting
- > Review Multimodal Strategies, Projects, and Programs (MSPP) Survey and Mapping Tool Results and Next Steps
- > Brainstorm and provide input on potential MSPP Evaluation Criteria

Detailed Agenda

5pm Welcome and Opening Remarks

- i. Introductions, Ground Rules, Objectives, Agenda

5:05pm Agenda Item #1: Project Team Update

- i. Coordinating Committee Recap
- ii. Special Combined Meeting of the Task Force and Community Leadership Committee Recap
- iii. Task Force Discussion
- iv. **Public Comment**

5:25pm Agenda Item #2: Multimodal Strategies, Projects, and Programs (MSPP)

Overview

- i. Survey and Interactive Mapping Tool Results
- ii. Key Dates and Upcoming Steps
- iii. Task Force Discussion
- iv. **Public Comment**

5:50pm Agenda Item #3: MSPP Preliminary Evaluation Criteria

- i. Equity Working Group Input
- ii. CLC Input
- iii. Evaluation Criteria Overview
- iv. Task Force Discussion
- v. **Public Comment**

6:50pm Closing Remarks and General Public Comment

7pm Adjournment

Agenda Item #1:

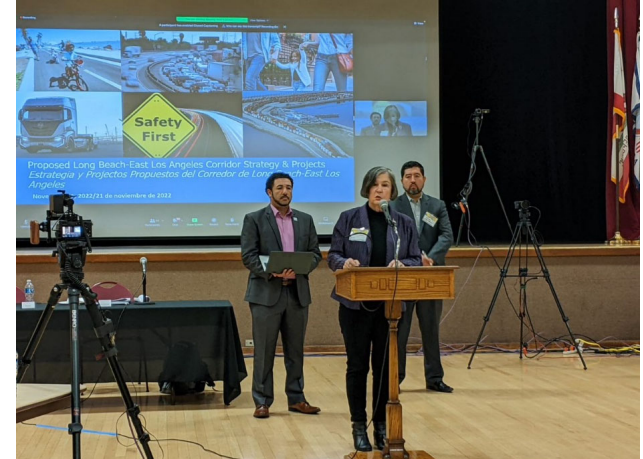
Project Team Update

- Coordinating Committee Recap
- Special Combined Meeting of the Task Force and Community Leadership Committee Recap
- Task Force Discussion
- **Public Comment**

Coordinating Committee Meeting – Recap

- > Coordinating Committee Meeting #8: November 30, 2022, from 6-7:30pm
- > **Members in attendance**
 - Sylvia Betancourt, Task Force
 - Commissioner Sharon Weissman, Task Force
 - Tiesha Davis, CLC
 - Viridiana Preciado Cervantes, CLC
- > **Topics Discussed**
 - Debrief of Special Combined Task Force and CLC Meeting
 - Preview of Task Force Meeting #15
 - Evaluation Criteria
 - Multimodal Projects and Programs Initial List Strategy
 - Coordinating Committee Roles and Responsibilities

Special Combined Meeting of the Task Force and Community Leadership Committee – Recap



MEETING
14

1739 SURVEY RESPONSES
28 CBO ENGAGEMENT
11 CBO PARTNERS
2.5K MAP RESPONSES COLLECTED
5K STAKEHOLDERS ENGAGED

ROBUST SOCIAL INPUT
HIGH ENGAGEMENT
955 MAP COMMENTS
BICYCLE TRANSIT TRAFFIC
WORKING TOWARD INVESTMENT PLAN

COALITION FOR ENVIRONMENTAL HEALTH AND JUSTICE
HEALTH MATTERS!

20 YEARS
SOCIAL DETERMINANTS
INCOME HEALTHCARE ACCESS TO EDU SOCIAL CONTEXT
ILLNESS ASSOCIATED W/ LONG EXPOSURE
INCREASED HEALTH RISK
POLLUTION EXPOSURE
LUNG CANCER
ASTHMA DIAGNOSIS HIGHER THAN COUNTY

OUR DEMANDS
HEALTH HOMES JOBS
PROTECT HOMES

VALUES
CENTERING PEOPLE
COLLABORATING W/ INDIGENOUS COMMUNITIES
NO DISPLACEMENT

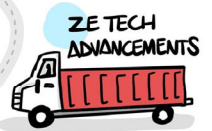
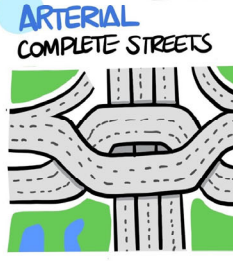
EQUITY
MUST BE APPROVED BY COMMUNITY & CLC MEMBERS

WELCOME BACK! IN-PERSON
AGENDA ITEM #1
CLC SEATS
4 SEATS
MOTION
CONGRATS NEW MEMBERS
MULTIMODAL STRATEGIES & PROJECTS
WE ARE HERE!

NEXT: EVALUATE & REFINE

POLLUTION IS CAUSING CANCER IN KIDS
LET'S WORK TOGETHER, ALL OF US.
DON'T DISPLACE US!
PARTNERSHIP IN SOUTHEAST L.A. FEELS LACKING
MORE GREEN SPACE
MORE CLC WORKSHOPS

WE HAVE A LOT OF WORK TO DO



RECOMMENDATIONS
IMPROVE TRAFFIC CONGESTION
INTERCHANGE PROJECTS
SOUND WALLS
BIKE PATHS
MORE TREES
REDUCE ACCIDENTS
MORE BATHROOMS

PROPOSED GOODS MOVEMENT PLAN



TRADE SUPPORTS GATEWAY COMMUNITIES

VALUE 2-WAY TRADE: \$7.3 BILLION
JOBS: 48,000

INFRASTRUCTURE IMPROVEMENTS
ROADWAY IMPROVEMENTS
TECH
FREIGHT RAIL

CONTRIBUTES TO ECONOMIC GROWTH



GOAL:
TO CREATE A MORE EQUITABLE FUTURE

MULTI-MODAL ACCESS
ZERO EMISSIONS
INVESTMENT IN PEOPLE

Task Force Discussion

Public Comment/*Comentarios públicos*

You will be given **1 minute** to make your question or comment, in order to maximize participation.

*Se le dará **1 minuto** para hacer su pregunta o comentario para darles a todos los asistentes la oportunidad de hablar.*

01:00

mins: secs: type:

 Breaktime for PowerPoint by Flow Simulation Ltd.

Pin controls when stopped

Agenda Item #2:

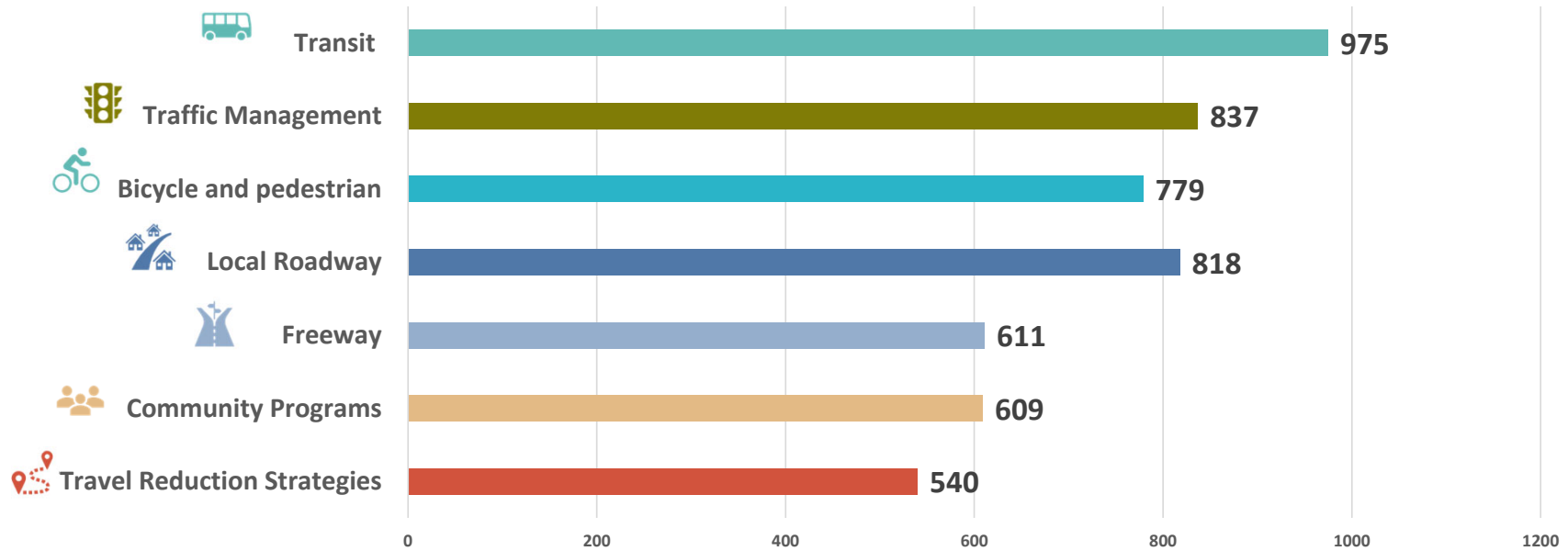
Multimodal Strategies, Projects and Programs (MSPP)

- Overview
- Survey and Interactive Mapping Tool Results
- Key Dates and Upcoming Steps
- Task Force Discussion
- Public Comment

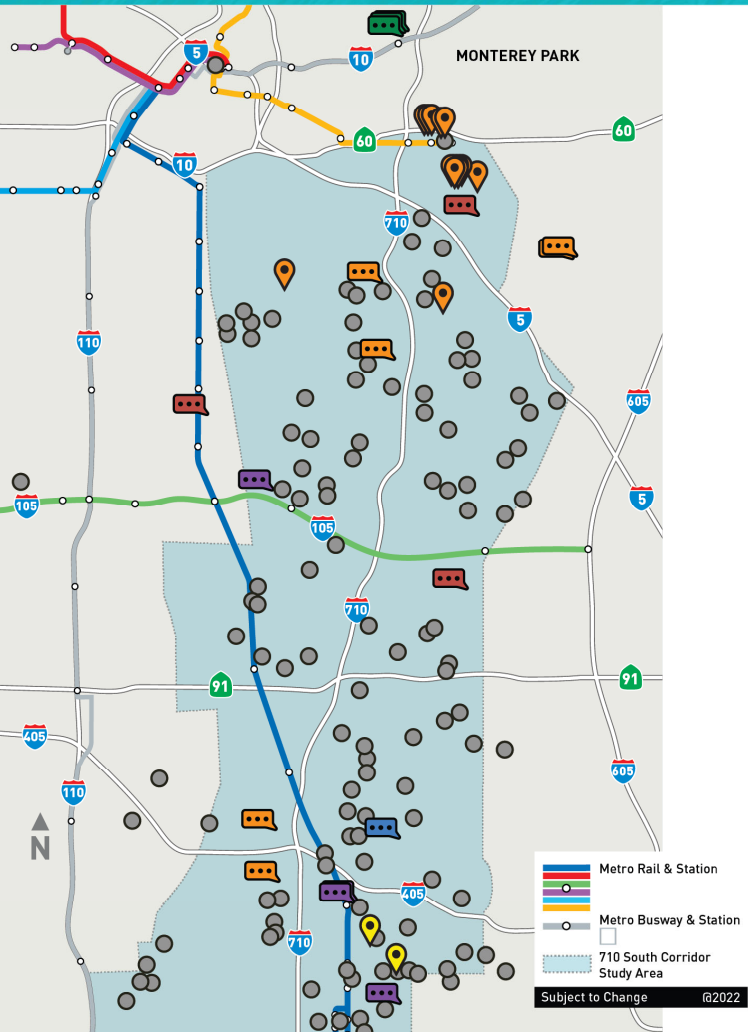
Survey Responses

Based on your experience and on the needs of your community, what type of projects, programs, or improvements would you most like to see implemented within your community and the I-710 Corridor?

Improvement Categories



Community-based Organization (CBO) & Public Engagement



28 CBO Engagement Events 

18 Pop-up and Workshop Events 



All Groups



Cultural Groups



Senior Groups



Faith Based Groups



Labor Unions



Student Groups

4800 flyers in multiple languages distributed at **166** locations throughout the corridor

Engagement efforts as of the date of this presentation.

Community-based Organization (CBO) & Public Engagement

15 CBO partners



8,788 collateral pieces distributed at events in **English, Spanish, Khmer and Tagalog**

5,466 stakeholders engaged so far at events



2 digital stakeholder survey campaigns prepared with a combined total of **1,464,381** impressions



2,495+ survey/map responses collected

What We're Working Toward



- **Through October 31** – Project Team is currently collecting ideas on Multimodal Strategies / Projects & Programs from many different sources, including the Task Force.
- **Early 2023** – We will bring back a draft list of the Multimodal Strategies / Projects & Programs for the Task Force to consider and provide input.

Anticipating the Next Phase



- **November 2022 to January 2023** — Seeking input on criteria to evaluate and refine projects and programs
- **Early 2023**—Projects will begin to undergo evaluation & prioritization in the next phase

Anticipating the Next Phase

Multimodal Strategies, Projects & Programs

Compile and categorize complete list of Projects/ Programs

Task Force, CLC, and WG review

Revised list of Initial Projects/ Programs

Task Force, CLC, and WG recommendations

Bundle projects for evaluation

Is anything missing from the list of projects and programs to carry forward for evaluation?

Based on the assessment results, develop a refined list of projects/programs

Develop criteria and performance measures

Task Force and CLC feedback

Evaluate bundled projects by these criteria and measures

Task Force, CLC, and Public feedback throughout the assessment process and the development of the final list of project/programs.

Evaluation Framework

Task Force Discussion

Public Comment/*Comentarios públicos*

You will be given **1 minute** to make your question or comment, in order to maximize participation.

*Se le dará **1 minuto** para hacer su pregunta o comentario para darles a todos los asistentes la oportunidad de hablar.*

01:00

mins: secs: type:

 Breaktime for PowerPoint by Flow Simulation Ltd.

Pin controls when stopped

Agenda Item #3: MSPP Preliminary Evaluation Criteria

- Equity Working Group Input
- CLC Input
- Evaluation Criteria
- Task Force Discussion
- Public Comment

Evaluation Criteria & Equitable Implementation – Equity Working Group Discussion

- > Highlights from **USC Equity Research Institute** presentation to Equity Working Group:
"Measures Matter: What is Equitable Implementation and Why Does it Matter?"
 - **Define equitable implementation**
 - Past – Prioritizes investments that close racialized and other gaps
 - Present – Involves authentic partnership throughout the process
 - Future – Mitigates disparities likely to emerge in the future
 - **Co-create metrics for evaluation**
 - Identify metrics based on what equity stakeholders want for their neighborhoods
 - Adopt equity metrics to measure economic, social, health, and environmental issues
 - Present findings on evaluation process to equity stakeholders, recommend improvements
 - **Attach equity guidelines to government funds** (example: Fresno's Measure C grant application scoring formula for funds prioritized neighborhoods facing geographic and economic disparities)
- > Discussion Highlights:
 - Community buy-in on criteria is only meaningful if community input is prioritized and implemented
 - Important to identify points of project evaluation over time to ensure accountability to community

Evaluation Criteria – CLC Discussion

> “Air Quality” priorities

- Impacts to people's personal lives
- Trucks, refineries, pollution, and indoor air quality
- Both mobile and stationary sources of pollution
- Quantifiable/measurable change
- Prioritize planting of new trees (and maintaining existing trees), which filter the air

> “Mobility” priorities

- Safety (2)
- ADA accessibility (2)
- Closing first/last mile gaps and projects that are located near transit hubs (2)
- Improvements to bus stops and high-quality transit (2)
- Projects that get the community involved (e.g. community helping with air quality testing)
- Protecting bike lanes (e.g. through vertical buffers)
- Reduction in dependence on automobile trips for short trips and increase of active transportation use
- Education for drivers relating to safety relating to driver/cyclist conflicts
- Reduction of collision rates
- Incentives for people to buy bicycles and use them
- Implementable projects

Evaluation Criteria – CLC Discussion

- > **“Community” priorities**
 - Incentives to educate the community about air pollution
 - Future generations and effects that continue over time
 - Housing affordability
 - Retention rates of existing residents
 - Workers and commuters (over recreational transportation users). Transit-dependent riders.
 - Benefits for schools and residents who are close to the I-710
 - Quality food, access

- > **“Safety” priorities**
 - Safety near the on/off ramps of the 710 for pedestrians and bike riders
 - General roadway safety
 - Maintenance of facilities
 - Protected bike paths that take maintenance into account
 - Lower travel speeds on neighborhood/side streets
 - Reduced reliance on law enforcement to ensure community safety (e.g. increasing pedestrian lights and services for unhoused communities)

Evaluation Criteria – CLC Discussion

- > **“Opportunity” priorities**
 - Incentives to educate the community about air pollution.
 - Incentives for businesses to hire locally.
 - Local jobs provide health benefits to workers.

- > **“Prosperity” priorities**
 - Access to capital and investment for existing local and small businesses.
 - Decreasing commute times.

- > **“Environment” priorities**
 - Replacement of plants with drought-tolerant and climate-ready planting.
 - Water recycling; rainwater harvesting.
 - Our urgent water needs.
 - Number of trees / native vegetation planted, amount of restoration of green space adjacent to the LA River, number of brownfields revitalized.

Evaluation Criteria

Vision, Principles,
and Goals

Other Considerations
(cost-effectiveness, ease of
implementation)

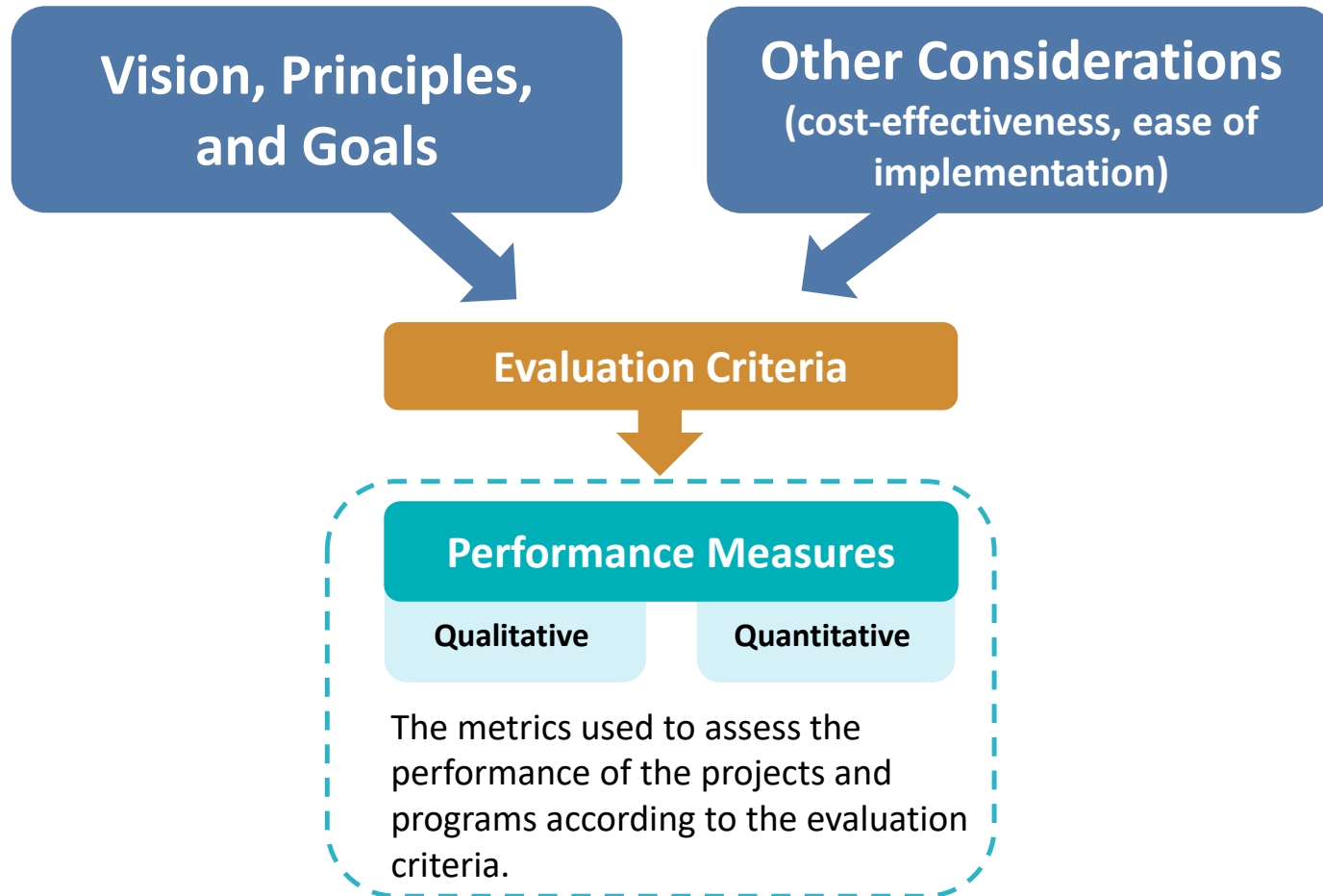
- *Relevance*
- *Impact*
- *Sustainability*
- *Effectiveness*
- *Efficiency*
- *Fit*
- *Equity*

Evaluation Criteria

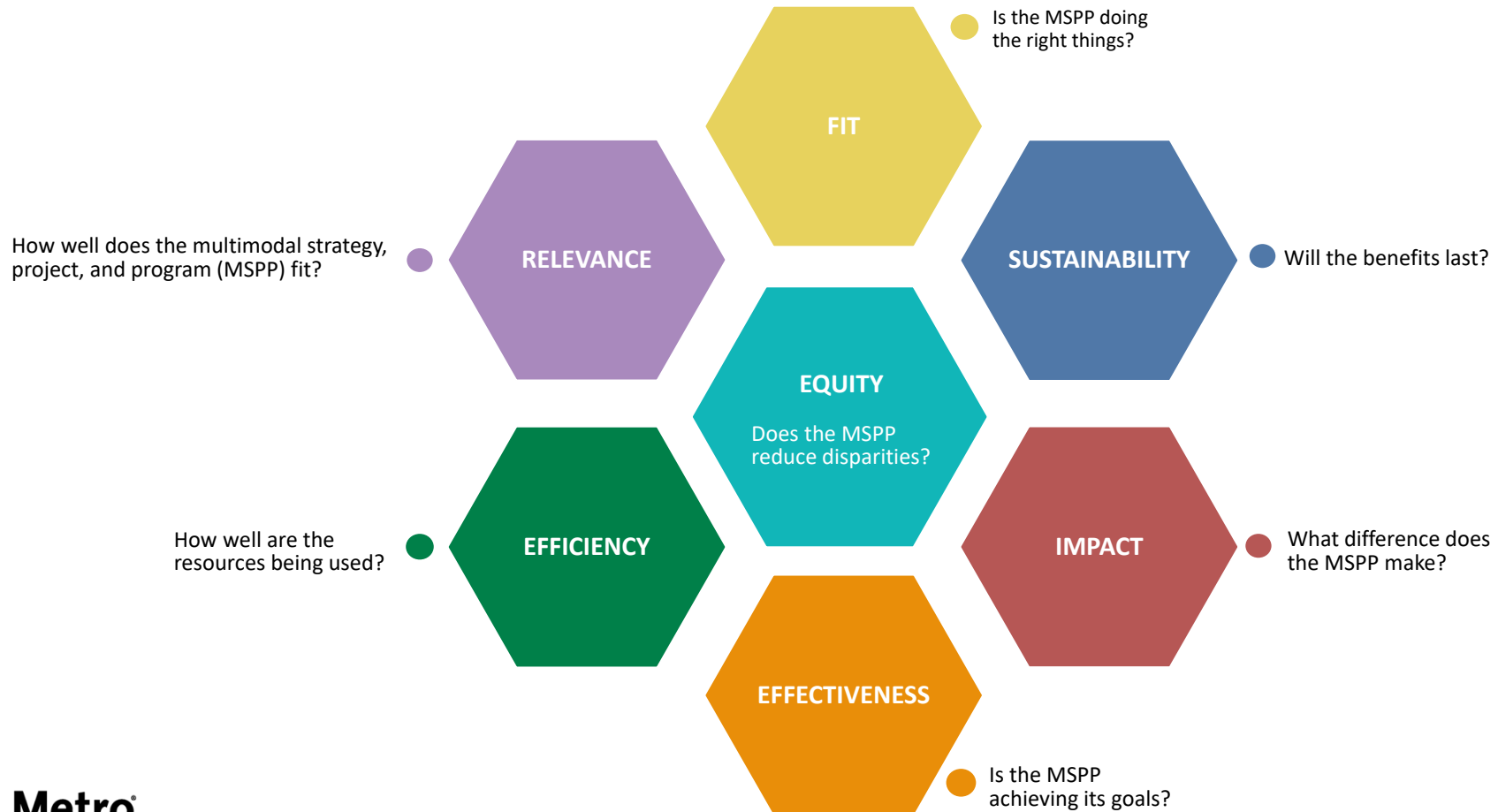
The benchmark or standard against which the projects and programs will be evaluated.

Think “outcomes” or “desired states”.

Evaluation Criteria



Evaluation Considerations and Related Questions



Evaluation Criteria / Performance Measures



Goal: Air Quality – Foster local and Regional Air Quality

Evaluation Criteria

Example: Air Pollution - Reduction in Vehicle Emissions

Your Idea

Your Idea

Your Idea

Your Idea

Your Idea

Your Idea

Your Idea

Performance Measures

Example: Decrease in diesel particulate matter/toxins from trucks (pounds).

Your Idea

Example: Decrease in auto and truck trips (transit use, telecommuting).

Your Idea

Your Idea

Your Idea

Your Idea

Your Idea

Evaluation Criteria / Performance Measures



Goal: Mobility

Evaluation Criteria / *Criterios de Evaluación*

Example: Bicycle Mobility - Close major gaps in the bike network

Your Idea

Example: Enhanced Transit Mobility

Your Idea

Your Idea

Your Idea

Your Idea

Your Idea

Performance Measures

Example: Miles of new bike paths/bike lanes added.

Your Idea

Example: Increase in transit ridership.

Your Idea

Your Idea

Your Idea

Your Idea

Your Idea

Evaluation Criteria / Performance Measures



Goal: Community

Evaluation Criteria

Example: Community Health – Reduced exposure to air pollution for sensitive populations.

Your Idea

Example: Walkable Communities – Making major roadways more pedestrian friendly.

Your Idea

Your Idea

Your Idea

Your Idea

Your Idea

Performance Measures

Example: Assessment of program features (such as air filters, vegetation barriers for schools)

Your Idea

Example: Assessment of program features (such as lighting, landscaping, wider sidewalks)

Your Idea

Your Idea

Your Idea

Your Idea

Your Idea

Evaluation Criteria / Performance Measures



Goal: Safety

Evaluation Criteria

Example: Improved Bicycle / Pedestrian Safety

Your Idea

Example: Improved Transit Rider Safety

Your Idea

Your Idea

Your Idea

Your Idea

Your Idea

Performance Measures

Example: Miles of *protected* paths/bike lanes added.

Your Idea

Example: Assessment of security features added to transit stops and stations (lighting, cameras)

Your Idea

Your Idea

Your Idea

Your Idea

Your Idea

Evaluation Criteria / Performance Measures



Goal: Opportunity

Meta: Oportunidad

Evaluation Criteria

Example: Accessibility - Improved
Access to Quality Jobs

Your Idea

Your Idea

Your Idea

Your Idea

Your Idea

Your Idea

Your Idea

Performance Measures

Example: Reduced travel times to
major employment centers.

Your Idea

Your Idea

Your Idea

Your Idea

Your Idea

Your Idea

Your Idea

Evaluation Criteria / Performance Measures



Goal: Prosperity

Evaluation Criteria

Example: Workforce Development - Potential for Job Creation

Your Idea

Your Idea

Your Idea

Your Idea

Your Idea

Your Idea

Your Idea

Performance Measures

Example: Assessment of program potential for job creation (job training)

Your Idea

Example: Assessment of program potential for job creation (targeted, local hire)

Your Idea

Your Idea

Your Idea

Your Idea

Your Idea

Evaluation Criteria / Performance Measures



Goal: Environment

Evaluation Criteria

Example: Climate Resilience

Your Idea

Example: Reduce Diesel Truck Trips

Your Idea

Your Idea

Your Idea

Your Idea

Your Idea

Performance Measures

Example: Assessment of program features to reduce greenhouse gases (solar energy, zero emissions vehicles)

Your Idea

Example: Greater use of on-dock rail by moving cargo to freight rail rather than trucks (% mode shift)

Your Idea

Your Idea

Your Idea

Your Idea

Your Idea

Public Comment/*Comentarios públicos*

You will be given **1 minute** to make your question or comment, in order to maximize participation.

*Se le dará **1 minuto** para hacer su pregunta o comentario para darles a todos los asistentes la oportunidad de hablar.*

01:00

mins: secs: type:

 Breaktime for PowerPoint by Flow Simulation Ltd.

Pin controls when stopped

Closing Remarks and General Public Comment

Upcoming Meetings and Project Information

Community Leadership Committee Meeting

- > Meeting #10

Monday, December 19, 5-7pm

Task Force Meeting

- > Task Force Meeting #16

Monday, January 9, 5-7pm

Working Group Meetings

- > Equity Working Group #9

Thursday, January 12, 5-7pm

- > Zero-Emissions Truck Working Group #12

Tuesday, January 17, 1-3pm

For the most updated list
of meeting dates, please visit
<http://www.metro.net/710-hub>

General Public Comment/*Comentarios del público*

You will be given **2 minutes** to make your question or comment, in order to maximize participation.

*Se le dará **2 minutos** para hacer su pregunta o comentario para darles a todos los asistentes la oportunidad de hablar.*

02:00

Stay connected to this project



Michael Cano, LA Metro Executive Officer (interim)
Federal/State Policy & Programming
Countywide Planning & Development



213.418.3010 W
213.305.0423 C



710corridor@metro.net



metro.net/projects/i-710-corridor



@metrolosangeles



losangelesmetro

Thank you for joining us!