



Information Station #1 Overview

February 2024



LB-ELA Corridor Mobility Investment Plan

Metro has a plan to improve the shared transportation system in the Long Beach-East Los Angeles Corridor (LB-ELA Corridor) to provide safe, quality travel options for moving people and goods.

The LB-ELA Corridor includes the following cities and communities:

- > Bell
- > Bellflower
- > Bell Gardens
- > Carson
- > Commerce
- > Compton
- > Cudahy
- > Downey
- > Unincorporated LA County
 - East LA
 - Walnut Park,
 - East Rancho Dominguez
- > Huntington Park
- > Lakewood
- > Long Beach
- > Los Angeles
 - Boyle Heights
 - San Pedro
 - Wilmington
- > Lynwood
- > Maywood
- > Paramount
- > Signal Hill
- > South Gate
- > Vernon



Corridor History

Community Investment Plan Focus (2021 – 2023)

2021

- > **Created LB-ELA Corridor Task Force** per Board's request to explore a more equitable and sustainable approach to addressing transportation and community challenges

2022

- > Adopted new name for the project: Long Beach-East LA Corridor Mobility Investment Plan
- > **Task Force team begins work** for the development of the Draft CMIP
- > Developed vision, goals and guiding principles approved by the Task Force and adopted by the Metro Board
- > Obtained public input to identify projects and program needed in communities along the LB-ELA corridor
- > Developed multimodal strategies and identified projects and programs
- > Board approved Pre-Investment Plan Opportunity to advance corridor projects for grant funding

2023

- > Evaluated and refined projects/programs
- > Developed an Investment Policy Strategy for implementation



Explore more!



Scan or access the StoryMap at:
metro.net/lb-ela-cp-hub

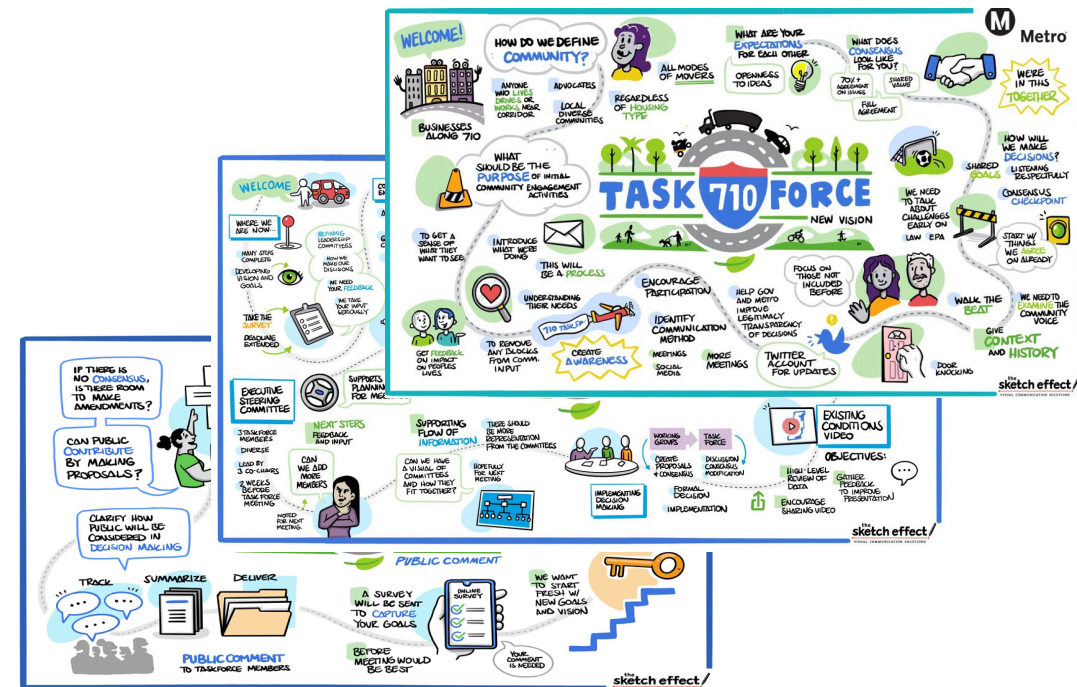
Vision Statement

"An equitable, shared I-710 South Corridor transportation system that provides safe, quality multimodal options for moving people and goods that will foster clean air (zero emissions), healthy and sustainable communities, and economic empowerment for all residents, communities, and users in the corridor."

> Approved by the Task Force (July 2022) and adopted by Metro Board (September 2022)

What's a "vision statement"?

A concise statement that captures the collective aspirations, desires, and outcomes of the project



LB-ELA Corridor Guiding Principles

Guiding Principle

A value that guides all processes and outcomes through a cohesive and intentional framework

Equity Guiding Principle

"A commitment to: (1) strive to rectify past harms; (2) provide fair and just access to opportunities; and (3) eliminate disparities in project processes, outcomes, and community results."

"The plan seeks to elevate and engrain the principle of Equity across all goals, objectives, strategies, and actions through a framework of Procedural, Distributive, Structural, and Restorative Equity, and by prioritizing an accessible and representative participation process for communities most impacted by the I-710."

Sustainability Guiding Principle

"Development that meets the needs of the present without compromising the ability of future generations to meet their own needs."

"A commitment to the sustainability to satisfy and improve basic social, health, and economic needs/conditions, both present and future, and the responsible use and stewardship of the environment, all while maintaining or improving the well-being of the environment on which life depends."

Goals

Goals

Desired outcomes for general areas of concern to support and realize the overall Vision

Context



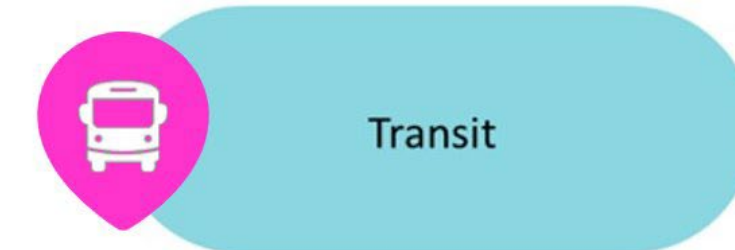
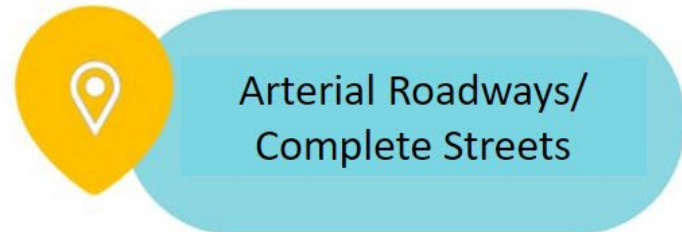
Guiding Principles



Initial List of Projects & Programs: Categories

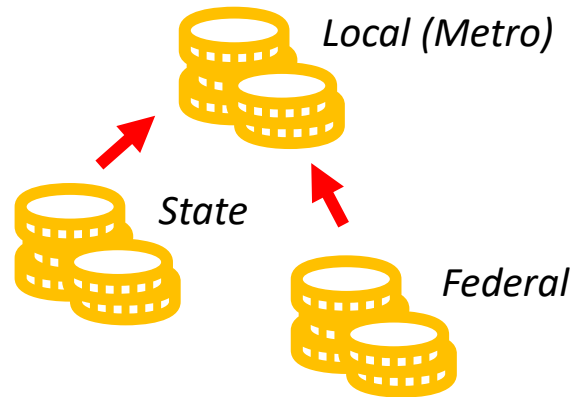
Projects are organized by “improvement category”

- > All projects and programs should support a multimodal future for the Corridor.
- > Improvement categories represent different modes



Maximizing our Local Funds

- > **The Corridor Mobility Investment Plan (Investment Plan) will leverage about \$743 million in sales tax revenue with state and federal funding.**
- > Expected to maximize the delivery of transportation projects and programs that provide safe, quality multimodal options for moving people and goods.



=



Delivery of more projects and programs that create safe, quality multimodal options for moving people and goods in the LB-ELA corridor communities.

Draft LB-ELA Corridor Mobility Investment Plan

A New Vision

A prioritized list of multimodal transportation projects and programs

- > **Prioritizes projects and programs based on evaluation criteria.**
- > **Plan includes multimodal projects with different modes** prioritized relative to each other.
- > **Outlines phased funding strategy.** Not all funding will be allocated at once; anticipated funding will become available at different timescales.
- > **Investment plan serves as a living document;** Metro plans to revisit the plan every few years.

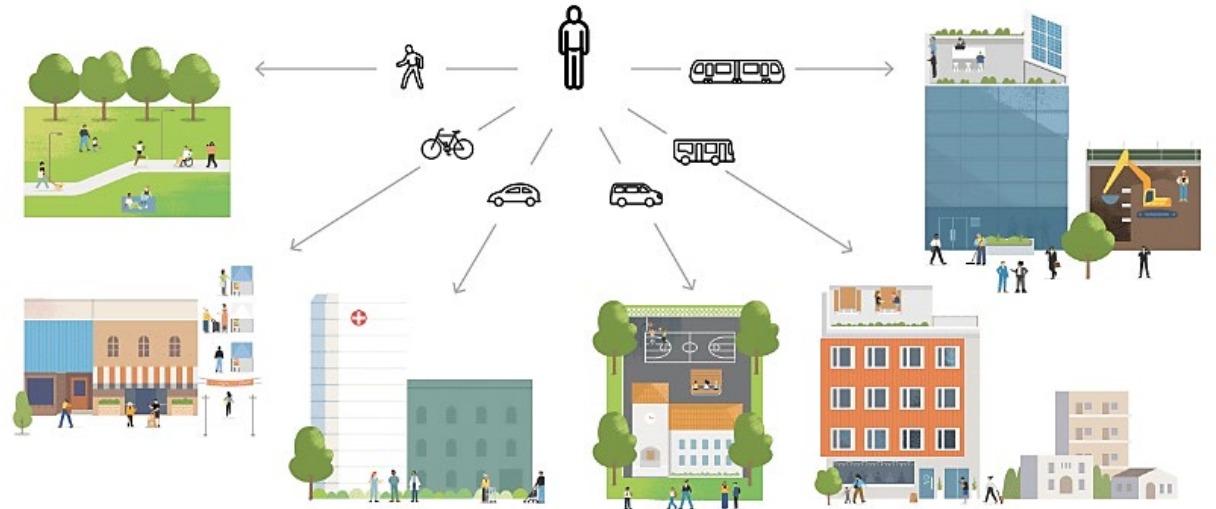
TRADITIONAL APPROACH
Freeway Expansion Focus
2000 – 2021



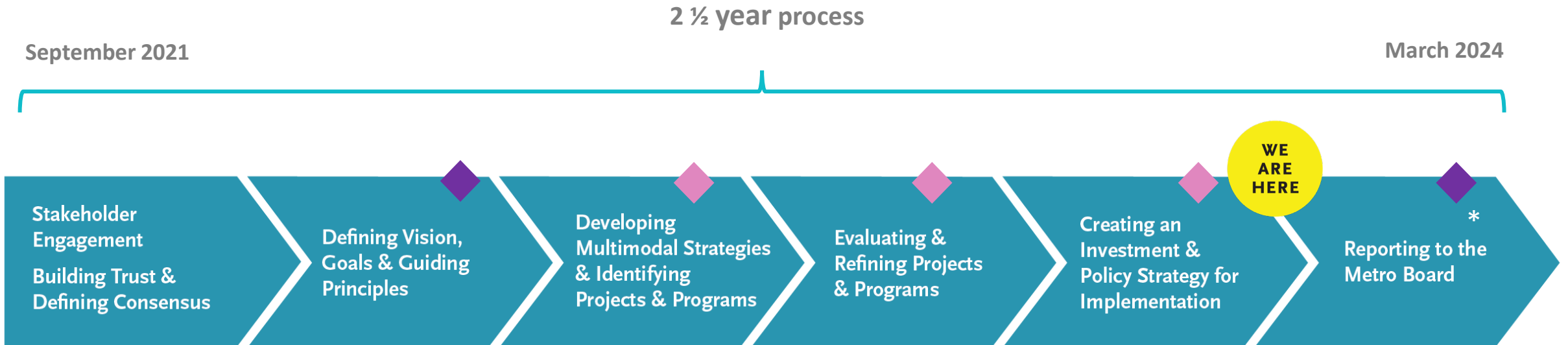
A NEW VISION
Community Investment Plan
2021 – today

End Goal – Encouraging Equitable Outcomes

Metro recognizes that vast disparities exist in access to opportunities, including *jobs, housing, community resources, healthy communities and mobility options*. Transportation is an essential lever to enabling access and improving quality of life for LA County.



What's Next: Previous & Future Milestones



- ◆ Board Action and Milestone Decision
- ◆ Board Status Report

Get Involved!



Get informed!



Sign-up for updates



Access the Project Hub & StoryMap, including the NEW Dashboard



Review the Draft Investment Plan and Other Resources



Join us!



Community Meetings

In-person, virtual, local viewing sites



Information Booths

Local community events



Pop-ups at activity centers

Transit stations/stops, markets, other



Comment



metro.net/lb-ela-cp-hub



710corridor@metro.net



213.418.3010



Michael Cano, *Executive Officer,*
Countywide Planning & Development
Metro
One Gateway Plaza, MS 99-13-1
Los Angeles, CA 90012



Learn more about the Draft Corridor Mobility Investment Plan as well as options to engage with us and submit your comments by **Friday, March 1, 2024**: metro.net/lb-ela-cp-hub

Stay Connected



Michael Cano, *Executive Officer,*
Countywide Planning & Development
Metro
One Gateway Plaza, MS 99-13-1
Los Angeles, CA 90012



213.922.4710



710corridor@metro.net



metro.net/projects/i-710-corridor



@metrolosangeles



losangelesmetro

