

Welcome!



Task Force Small Group Meeting –
CEHAJ

November 20, 2023

Welcome and Objectives

Topic Areas

- > Project readiness criteria and thresholds
- > Tiering process and results
- > Discuss pathways for community programs
- > Preliminary test for consensus on tiering results

Meeting Agenda

- > **Welcome and Opening Remarks**
 - > *5 minutes*
- > **Agenda Item #1: Draft Tiering Results**
 - > *20 minutes*
- > **Agenda Item #2: Freeway Improvements**
 - > *10 minutes*
- > **Agenda Item #3: Equity & Health Concerns in the Investment Plan**
 - > *10 minutes*
- > **Task Force Small Group Discussion**
 - > *45 minutes*
- > **Adjournment**

Agenda Item 1: Draft Tiering Results

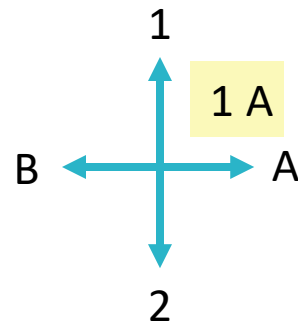
Release of Draft Tiering Results

- > Today is an in-depth discussion on draft results
- > Opportunity to ask questions about process and results
- > Results presented to Metro board at committee meetings this week
- > Results subject to change over the next month based on feedback received

How does Tiering fit into the Investment Plan?

Tiering Analysis

Determines project tier (1A, 1B, 2A, 2B)



Based on:

1. Evaluation Results

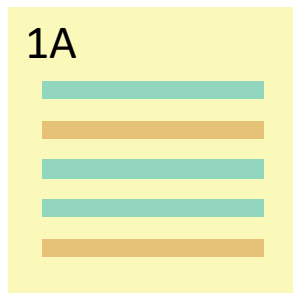
- Evaluation scores/alignment with goals & principles

2. Project Readiness

- Implementable within a certain number of years?

Funding Strategy

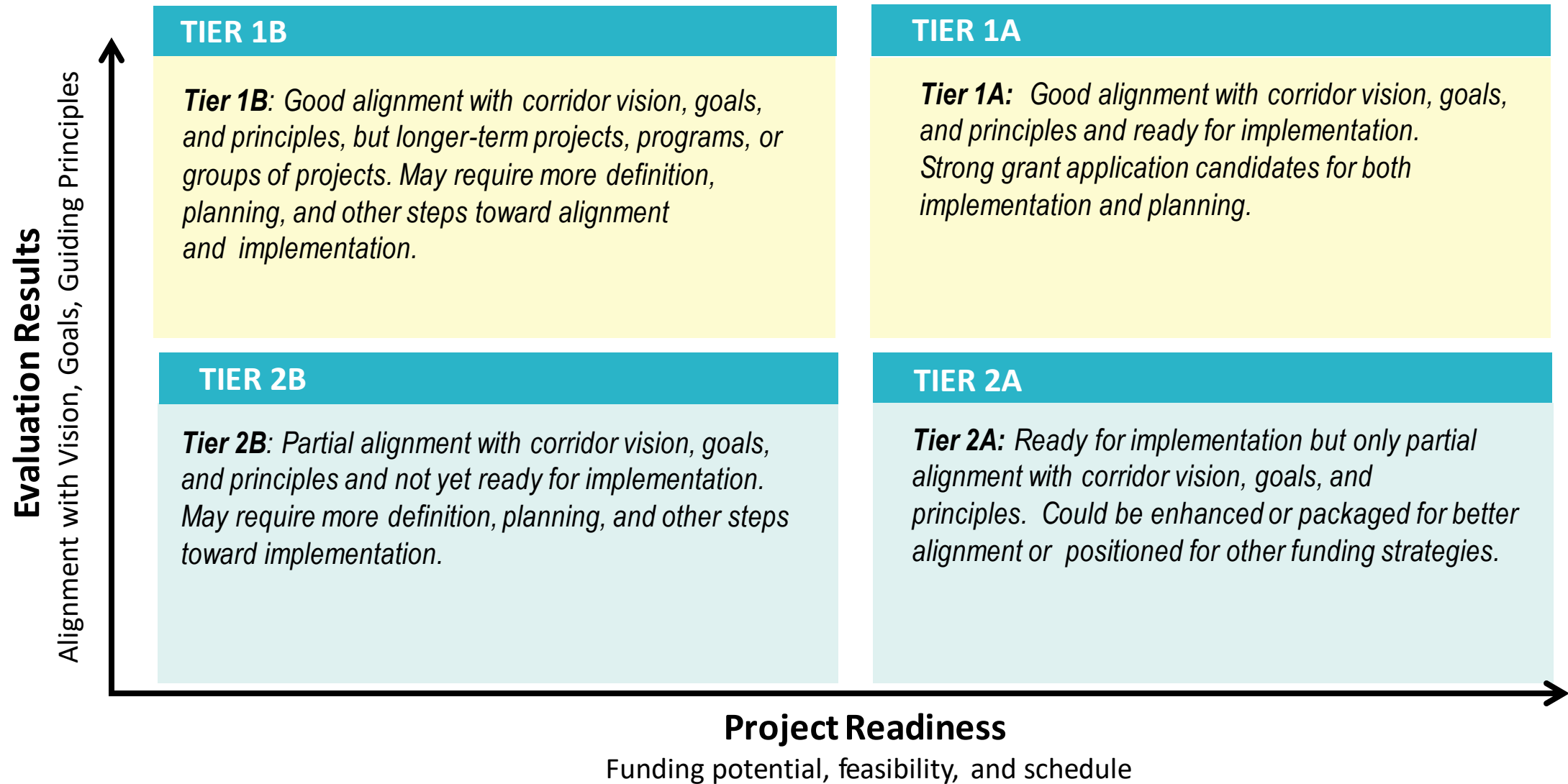
Helps identify funding priorities



Funding Strategy Includes:

- Cost & local match required for grants
- Funding potential
- Construction feasibility
- Political/institutional/agency support
- Equity considerations and concerns

What does Tiering mean?



Tier 1 vs Tier 2 Projects

- > Tier 1 vs Tier 2 is based on the results of the evaluation that we presented last month. It also takes into account the concern scores from “Outcome” concerns.
- > Total “Outcome” Concerns score was used to adjust scoring and create the “Draft Final Ranking Score” shown on the draft tiered project list
- > The top 40% of all projects within each mode are Tier 1 based on Draft Final Ranking Score
- > These are draft results: we are still reviewing comments received on evaluation results
 - > Changes to evaluation results are still possible and any changes, if applicable, will be shared during the next update

Which Concerns Impact the Tiered Results?

Outcomes

Outcome Concerns are incorporated into the Draft Final Ranking Score, which impacts the tiered results

- Con3:** Potential for Increased Commute Times
- Con4:** Potential for Traffic Diversion
- Con5:** Potential to Increase Localized Emissions / Emissions shifting
- Con7:** Potential for concentrated congestion impacts
- Con9:** Potential for VMT Increases
- Con10:** Potential to increase user costs
- Con12:** Potential to increase economic displacement
- Con14:** Potential for reduced transit ridership

Design

Design and Construction Concerns may impact prioritization for short-term (Tier A) projects

- Con1:** Potential for Displacements
- Con2:** Potential for Physical Impacts (ROW)
- Con6:** Potential for bike/ped safety impacts
- Con11:** Potential to increase impervious cover
- Con13:** Potential to increase noise pollution
- Con15:** Potential for new barriers/decreased access
- Con16:** Potential for increased storm water runoff and/or increased flood risk

Construction

- Con8:** Potential Construction Impacts

Outcome, Design, and Construction Concerns will follow projects throughout the entire process

Draft Tiering Results – Readiness Thresholds

Readiness Thresholds by Mode (Projects)

Mode	Time Frame		
	Years to begin construction		
	Short	Med	Long
Active Transportation / TDM	0 to 2	3 to 6	7+
Transit	0 to 3	4 to 8	9+
Goods Movement	0 to 3	4 to 8	9+
Arterial Roadway	0 to 3	4 to 8	9+
Freeway	0 to 5	6 to 10	10 +
Community Programs	NA	NA	NA

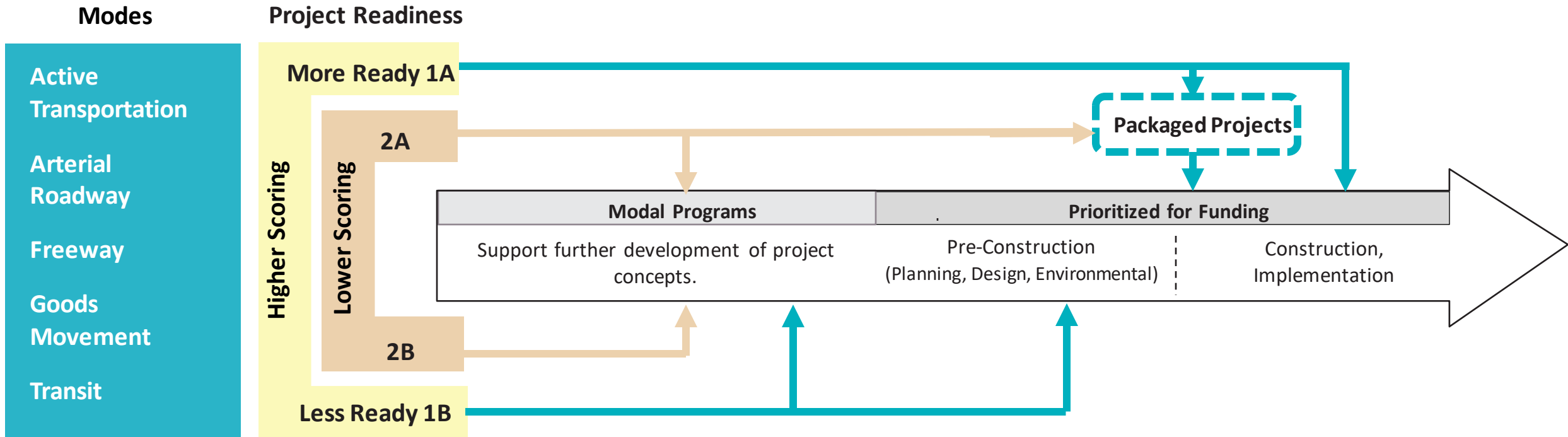
Time Frame (Programs)

Program Type	Time Frame
Expansion of on-going program, a pilot program, or study	Short-term
Collections of defined or semi-defined projects	Medium-term
Collections of undefined strategies or project ideas	Long-term

Community Programs Pathway

- > Community Programs are important components and must be treated equitably to encourage their success, as available funding is limited.
- > Community Programs will be sorted to see what agencies would be the most appropriate lead.
- > Regardless of who leads, Metro will collaborate with relevant agencies.
- > Metro is also evaluating relevant Community Programs that Metro already leads.
- > Metro will identify funding sources, implementation pathways, and appropriate sponsors for these programs.

Funding and Development Pathway for Projects & Programs



What does packaging mean?

- > Projects must have geographic overlap and be complementary
 - > This means that project share the same route and do not conflict with each other
 - > This is NOT a way to bundle projects with high concerns with better performing projects
- > Examples might include:
 - > A complete streets project and an arterial improvements project
 - > An arterial signal project and a transit priority project
 - > An active transportation project and an intersection safety project
- > Examples will NOT include:
 - > A freeway improvement with a nearby transit project
 - > Projects located on different corridors

Draft Tiering Results

Draft Tier 1 Projects

Mode	Tier 1A	Tier 1B
Active Transportation / TDM	6	11
Arterial Roadway	17	10
Freeway	4	10
Goods Movement	1	4
Transit	3	12
Total	31	47

Draft Tier 2 Projects

Mode	Tier 2A	Tier 2B
Active Transportation / TDM	9	14
Arterial Roadway	31	8
Freeway	13	8
Goods Movement	2	6
Transit	10	12
Total	65	48

Draft Tiering Results – Active Transportation

Draft Tier 1 Results – Active Transportation (10 examples)

Project ID	Project Name	Draft Final Ranking Score	Draft Tier
LB-ELA_0201	Pedestrian / Bicycle Enhancements and Safety Features	18.3	Tier 1B
LB-ELA_0214	I-710 Livability Initiative	17.9	Tier 1B
LB-ELA_0017	Regionally significant bike projects from the Metro Active Transportation Plan	16.5	Tier 1B
LB-ELA_0163	LB-ELA Corridor Bicycle Gap Closure Projects	16.3	Tier 1B
LB-ELA_0008	Blue Line First Last Mile Plan Improvements	16	Tier 1A
LB-ELA_0162	City of Long Beach 8-to-80 Bikeways	15.8	Tier 1B
LB-ELA_0204	Pedestrian Gap Closure Projects	15.4	Tier 1B
LB-ELA_0165	Compton Creek Bike Underpasses	15.1	Tier 1B
LB-ELA_0212	Tweedy Boulevard Active Transportation Improvements	14.4	Tier 1A
LB-ELA_0111	West Santa Ana Branch Bike & Pedestrian Trail	14.3	Tier 1B

Takeaways – Active Transportation

- The first several projects are corridor-wide, catch-all efforts to improve safety and appearance, through trees, amenities, widened sidewalks, crosswalks, ADA enhancements, signs and signals, striping, lighting, protection, improved bus stops, traffic calming, etc.
- New and improved bike facilities are also included corridor-wide

Results of Tiering Analysis – Active Transportation

Active Transportation

Project ID	Project Name	Project Description	Draft Final Ranking Score	Draft Tier	Next Phase	Years to Construction / Time Frame
LB-ELA_0213	West Santa Ana Branch [WSAB] Light Rail Station First-Last Mile Bikeway Safety and Access Project	Install 0.3 miles of sidewalk, 1.5 miles of bicycle lanes (Class II), 2 miles of bike route sharrows (Class III), street lighting, center median islands, curb ramps, and a rest area near the LA River Bike Path. Located in the eastern quadrant of the City of South Gate, along the existing Union Pacific Railroad /future West Santa Ana Branch Transit Corridor.	14.0	Tier 1A	Design	1.5 (Short)
LB-ELA_0163	LB-ELA Corridor Bicycle Gap Closure Projects	Implement regionally significant bicycle projects in areas with insufficient existing and planned bicycle infrastructure within the LB-ELA Corridor (several projects within the study area). See Attachment A for more detail. Would include potential routes identified by the community, but which will require further planning and design in cooperation with the local jurisdictions (Cities, County of Los Angeles).	16.3	Tier 1B	Varies	Assigned Medium Based on Program Type

Draft Tiering Results – Arterial Roadway

Draft Tier 1 Results – Arterial Roadway (10 examples)

Project ID	Project Name	Draft Final Ranking Score	Draft Tier
LB-ELA_0057	Atlantic Complete Street Corridor	17.7	Tier 1A
LB-ELA_0062	Long Beach Complete Street Corridor	17.5	Tier 1B
LB-ELA_0064	Gage Avenue Street Improvements	16.9	Tier 1A
LB-ELA_0058	Florence Complete Street Corridor	16.8	Tier 1A
LB-ELA_0060	Alondra Complete Street Corridor	16.3	Tier 1A
LB-ELA_0059	Imperial Complete Street Corridor	16.2	Tier 1A
LB-ELA_0061	Slauson Complete Street Corridor	15.7	Tier 1A
LB-ELA_0056	Artesia Complete Street Corridor	15	Tier 1B
LB-ELA_0129	Garfield Avenue Improvement Project	14.9	Tier 1B
LB-ELA_0010	Shoemaker Bridge/Shoreline Drive	13.3	Tier 1A

Takeaways – Arterial Roadway

- Complete Streets, walking, biking, and safety improvements, and beautification along major corridors within the study area.
- Also includes replacement of the Shoemaker Bridge, which has pedestrian and bike access.
- You can see more about the "extents" for each corridor on the Tiered List document.

Results of Tiering Analysis – Arterial Roadway Examples

Arterial Roadway

Project ID	Project Name	Project Description	Draft Final Ranking Score	Draft Tier	Next Phase	Years to Construction / Time Frame
LB-ELA_0057	Atlantic Complete Street Corridor	Atlantic Ave./Blvd., between Ocean Blvd. and SR-60. Reconstruct Atlantic Ave./Blvd. to establish a Complete Street Corridor, including: bicycle facilities, pedestrian facilities and crosswalks, transit stop features and amenities, safety and traffic calming features, landscaping, hardscaping, public art (aesthetic treatments), public green spaces, trees, and water quality features such as bioswales and tree wells.	17.7	Tier 1A	Construction / Planning / Environmental	1 to 5 (Short)
LB-ELA_0062	Long Beach Complete Street Corridor	Long Beach Blvd./Pacific Blvd. Reconstruct Long Beach Blvd./Pacific Blvd., between Ocean Blvd. and Slauson Ave. to establish a Complete Street Corridor, including: bicycle facilities, pedestrian facilities and crosswalks, transit stop features and amenities, safety and traffic calming features, landscaping, hardscaping, public art (aesthetic treatments), public green spaces, trees, and water quality features such as bioswales and tree wells.	17.5	Tier 1B	Unknown	Unknown (Assumed long-term)

Draft Tiering Results – Freeway

Draft Tier 1 Results – Freeway (10 examples)

Project ID	Project Name	Draft Final Ranking Score	Draft Tier
LB-ELA_0156	Traffic Controls at I-710 Freeway Ramps	14	Tier 1A
LB-ELA_0181	Freeway Lids, Caps, and Widened Bridge Decks	12.7	Tier 1B
LB-ELA_0031	I-710/Alondra Interchange Improvements & Modification of SBI-710 to SR-91 Connectors	11.8	Tier 1B
LB-ELA_0034	I-710/Florence Interchange Improvements	10.9	Tier 1B
LB-ELA_0037	I-710/I-105 Connector Project Improvements	10.8	Tier 1B
LB-ELA_0092	I-710/PCH Interchange Improvement	10.6	Tier 1B
LB-ELA_0033	I-710/Firestone Interchange Improvements	10.5	Tier 1B
LB-ELA_0153	Congestion Pricing	10.1	Tier 1A
LB-ELA_0030	I-710/Long Beach Blvd. Interchange Improvements	10.1	Tier 1B
LB-ELA_0028	I-710/Willow Interchange Improvements	10	Tier 1B

Takeaways – Freeway

- A key takeaway we heard from past meetings was relating to safety at freeway ramps; several projects that ranked highly address this issue
- Greening and air quality improvements, two issues the stakeholders have brought up in the past, are addressed in the second project

Results of Tiering Analysis – Freeway Examples

Freeway

Project ID	Project Name	Project Description	Draft Final Ranking Score	Draft Tier	Next Phase	Years to Construction / Time Frame
LB-ELA_0156	Traffic Controls at I-710 Freeway Ramps	Add traffic signals with protected pedestrian/bicycle phase(s), crosswalks, lighting, landscaping, signing and striping, and other safety-related pedestrian features at the ramp termini of I-710.	14.0	Tier 1A	Varies	Assumed short-term
LB-ELA_0034	I-710/Florence Interchange Improvements	Reconfiguration of I-710/Florence Interchange to improve operations, safety, and sight distance for traffic entering and exiting the freeway. Improve traffic controls to address safety concerns of bicyclists, pedestrians at ramp termini. Upgrade bridge structures to allow space for bicycle/pedestrian connections across I-710 and LA River Channel.	10.9	Tier 1B	Planning/ Environmental	7+

Draft Tiering Results – Goods Movement

Draft Tier 1 Results – Goods Movement (all)

Project ID	Project Name	Draft Final Ranking Score	Draft Tier
LB-ELA_0004	Long Beach-East Los Angeles Corridor Clean Truck Program	11.5	Tier 1B
LB-ELA_0023	Clean Truck Infrastructure	10.2	Tier 1B
LB-ELA_0217	Freight Rail Electrification Pilot Project	9.7	Tier 1A
LB-ELA_0123	Pico Avenue Street Improvement	9.5	Tier 1B
LB-ELA_0024	Pier 400 On Dock Rail Modernization	8.3	Tier 1B

Takeaways – Goods Movement

- Only 5 projects/programs in the list
- Clean truck initiatives rose to the top
- Top ranked in this category is the corridor-wide initiative that turns over diesel trucks in favor of zero emissions trucks.

Results of Tiering Analysis – Goods Movement

Goods Movement

Project ID	Project Name	Project Description	Draft Final Ranking Score	Draft Tier	Next Phase	Years to Construction
LB-ELA_0217	Freight Rail Electrification Pilot Project	Work with the Union Pacific (UP) and BNSF railroads to develop and test battery electric locomotives for operation on the Pacific Harbor Line and in the Alameda Corridor with an ultimate goal of advancing a zero-emissions technology capable of entering commercial, revenue service operation.	9.7	Tier 1A	Unknown	Assumed short (pilot project)
LB-ELA_0024	Pier 400 On Dock Rail Modernization	On-dock railyard expansion to accommodate electric operated rail-mounted gantry cranes.	8.3	Tier 1B	Conceptual Engineering	7

Draft Tiering Results – Transit

Draft Tier 1 Results – Transit (10 examples)

Project ID	Project Name	Draft Final Ranking Score	Draft Tier
LB-ELA_0140	Metro Micro Transit Zone(s)	15.0	Tier 1B
LB-ELA_0164	Improved Frequency of Metro Buses in the LB-ELA Study Area	14.6	Tier 1B
LB-ELA_0203	Bus Stop Improvements	14.1	Tier 1A
LB-ELA_0219	Metrolink Regional Rail Line between Union Station and Long Beach	13.9	Tier 1B
LB-ELA_0001	West Santa Ana Branch Transit Corridor (LRT)	13.9	Tier 1B
LB-ELA_0169	Southeast LA Transit Improvement Program	13.7	Tier 1B
LB-ELA_0168	Compton Transit Management Operations Center Enhancements	13.1	Tier 1B
LB-ELA_0175	Install Quad Safety Gates at all A Line [Blue Line] Crossings	12.7	Tier 1B
LB-ELA_0178	Metro Bus Priority Lane Corridor along Line 18 (Whittier Blvd.)	12.5	Tier 1B
LB-ELA_0136	Enhanced Transit Security	12.4	Tier 1A

Takeaways – Transit

- The first project implements on-demand transit service for the northern area between Lynwood and Commerce.
- Other Tier 1 projects for this mode address improvements to bus service (frequency and amenities)
- New and improved rail service is also included.
- Transit security - a concept that has come up in past meetings - is also included in Tier 1.

Results of Tiering Analysis – Transit Examples

Transit

Project ID	Project Name	Project Description	Draft Final Ranking Score	Draft Tier	Next Phase	Years to Construction / Time Frame
LB-ELA_0203	Bus Stop Improvements	<p>Collaborate with the local jurisdictions (cities, unincorporated areas of Los Angeles County) to implement bus stop improvements within the LB-ELA Corridor. Bus stop improvements would include items such as:</p> <ul style="list-style-type: none"> - Lighting, Security Features, Benches, Shade and shelters, Drinking Fountains, Solar-powered arrival displays, Trashcans, Landscaping, Signage, Crosswalks, Improved ADA accessibility, including repositioning of utility boxes on the sidewalk <p>Provide financial support in order to help leverage local funds for project implementation. Funds would be made available based on criteria such as: project need, project readiness, and project benefits relative to costs, among other factors.</p>	14.1	Tier 1A	On-going	Short: On-going Program
LB-ELA_0141	Metro Bus Priority Lane Corridor along Line 60 (Long Beach Blvd.)	<p>Improve bus times, speeds, and reliability along Line 60 (Long Beach Blvd.). Proposed improvements would include: transit signal prioritization, bus priority lanes and bus stop bulb outs, all door boarding, bus stop and layover improvements.</p>	12.3	Tier 1B	TBD	Unknown (Assumed Medium)

Task Force Discussion

Agenda Item #2: Freeway Improvements

What is Metro's approach to the I-710 freeway?

- > Metro adopted multimodal highway investment objectives as a board policy in of June 2022 in response to changing policy landscape at local, state, and federal level toward freeways
- > The freeway has yet to be modernized since it was constructed 60 years ago. Existing conditions have led to safety and operational issues that spill over into neighboring communities; future conditions will only worsen.
- > A thriving multimodal transportation system in the corridor, especially in and for corridor communities, will require investment across modes, including the freeway – in alignment with the corridor's vision and goals and to create a safer and better multimodal transportation system.

Freeway Improvements

How do the proposed freeway improvement projects and programs reflect the vision, goals, and principles adopted by the LB-ELA Task Force and existing Metro Board policy?

The proposed freeway improvements are aligned with the vision, goals and principles adopted by the LB-ELA Task Force and existing Metro Board Policy. This is illustrated below in what we are considering and not considering:

What We Are Considering

- **I-710 Mainline (Safety and Operational improvements)**
- **Local Interchanges/Overcrossings and partial Freeway Interchanges**
- **Technology**

What We Are NOT Considering

- **Freeway widening**
- **Full freeway to freeway interchanges**
- **General purpose lanes**
- **Projects with major displacements**

Freeway Improvements

Mejoras de autopistas



Included in Project List

- I-710 **Mainline*** safety and operational improvements
- Local **Interchanges** and partial freeway interchanges
- **Overcrossings**
- **Technology**



Not Included in Project List

- Freeway widening
- Full freeway to freeway interchanges
- General purpose lanes
- Projects with major displacements



Incluido en la lista de proyectos

- *Mejoras operativas y de seguridad en la línea principal de la I-710*
- *Intercambiadores locales e intercambiadores parciales de autopistas*
- *Cruces*
- *Tecnología*



No incluido en la lista de proyectos

- *Ampliación de autopistas*
- *Intercambiadores de autopista a autopista*
- *Carriles generales*
- *Proyectos con grandes desplazamientos*

Freeway Improvements

What Mainline safety infrastructure improvements are on the project list?

Two (2) safety & operational Mainline infrastructure improvements are on the Project List:

- Auxiliary Lane: Between Willow St. and Wardlow Rd./I-405 (LB-ELA_0035)
- Auxiliary Lane: Between Del Amo Blvd. and Long Beach Blvd. (LB-ELA_0038)

Freeway Improvements

What Interchange safety improvements are on the project list?

Twelve (12) I-710 Interchange improvements are on the Project List:
(Arterial Interchanges include multimodal improvements to crossing arterials)

- Florence Ave. (LB-ELA_0034)
- Firestone Blvd. (LB-ELA_0033)
- Imperial Hwy. (LB-ELA_0032)
- I-105 (LB-ELA_0037)- *Partial*
- Alondra Blvd. (LB-ELA_0031)
- SR-91 (LB-ELA_0031)- *Partial*
- Del Amo Blvd. (LB-ELA_0029)
- Long Beach Blvd. (LB-ELA_0030)
- I-405/Wardlow Rd. (LB-ELA_0036) - *Partial*
- Willow St. (LB-ELA_0028)
- PCH (LB-ELA_0092)
- Anaheim St. (LB-ELA_0091)

Freeway Improvements

What Overcrossing safety improvements are on the project list?

Overcrossing safety improvements included on the Project List are:

- All I-710/arterial interchange improvements will have multimodal components – safe bicycle and pedestrian pathways integrated with the crossing arterials. Projects addressing the bridge span will also identify opportunities to improve bus transit across the freeways to connect separated communities more directly.
- Separate bicycle and pedestrian freeway crossings
 - Humphreys Ave Overcrossing – East LA (LB_ELA_0139)
 - Spring Street Overcrossing – Long Beach (LB_ELA_0138)
 - Hill Steet Overcrossing – Long Beach (LB_ELA_0094)

Freeway Improvements

What Technology improvements are on the project list?

Two (2) Technology improvements are included on the Project List:

- Integrated Corridor Management (LB_ELA_0003)
- I-710 Particulate Matter Reduction Pilot Project (LB_ELA_0157)

What Other improvements are on the project list?

Other freeway improvement projects include:

- Congestion Pricing (LB_ELA_0153)
- Zero-Emission Truck (LB_ELA_0004)
- Zero-Emission Truck Travel Zone Restriction (LB_ELA_0154)
- Taller Freeway Soundwalls (LB_ELA_0137)
- Drought Tolerant Landscaping and Aesthetic Enhancements (LB_ELA_0155)

What is the Future Project Development Path?

Freeway infrastructure projects selected for consideration will undergo additional, more detailed study, under both the CEQA and NEPA environmental process to:

- Demonstrate independent utility and have logical termini
- Address important safety concerns on and connected to the freeway
- Use the most current information and data
- Develop more detailed design of alternatives
- Assess their benefits, impacts, and costs
- Include extensive community outreach and involvement
- Result in a decision about the project design to construct

Agenda Item #3

Equality & Equity in the Investment Plan

Key Points from Past Meetings: Equity

Equitable Processes

Equitable Outcomes

Define and Measure

Listen and Learn

Train and Grow

Focus and Deliver

Understanding Equity

- The Guiding Principle of Equity was adopted to apply across all project goals
- Metro's Equity Focus Communities designation was used throughout the process.

Task Force Process

- Task Force and CLC
- CBO Partnering Strategy
- Equity Working Group
- Zero-Emission Truck Working Group
- Community Engagement Strategy W.G.

OER Leadership

- Metro's Office of Equity and Race (OER) has played a leadership role in the process

Equity Evaluation

- 24 Equity Evaluation Criteria

Concerns Evaluation

- Outcome Concerns (Tiering)
- Design & Construction Concerns (Prioritization)

Project Idea Collection

- Extensive multilingual Public Outreach
- Social Pinpoint Mapping Tool and Survey Suggestions from jurisdictions

Equity Planning + Evaluation Tool

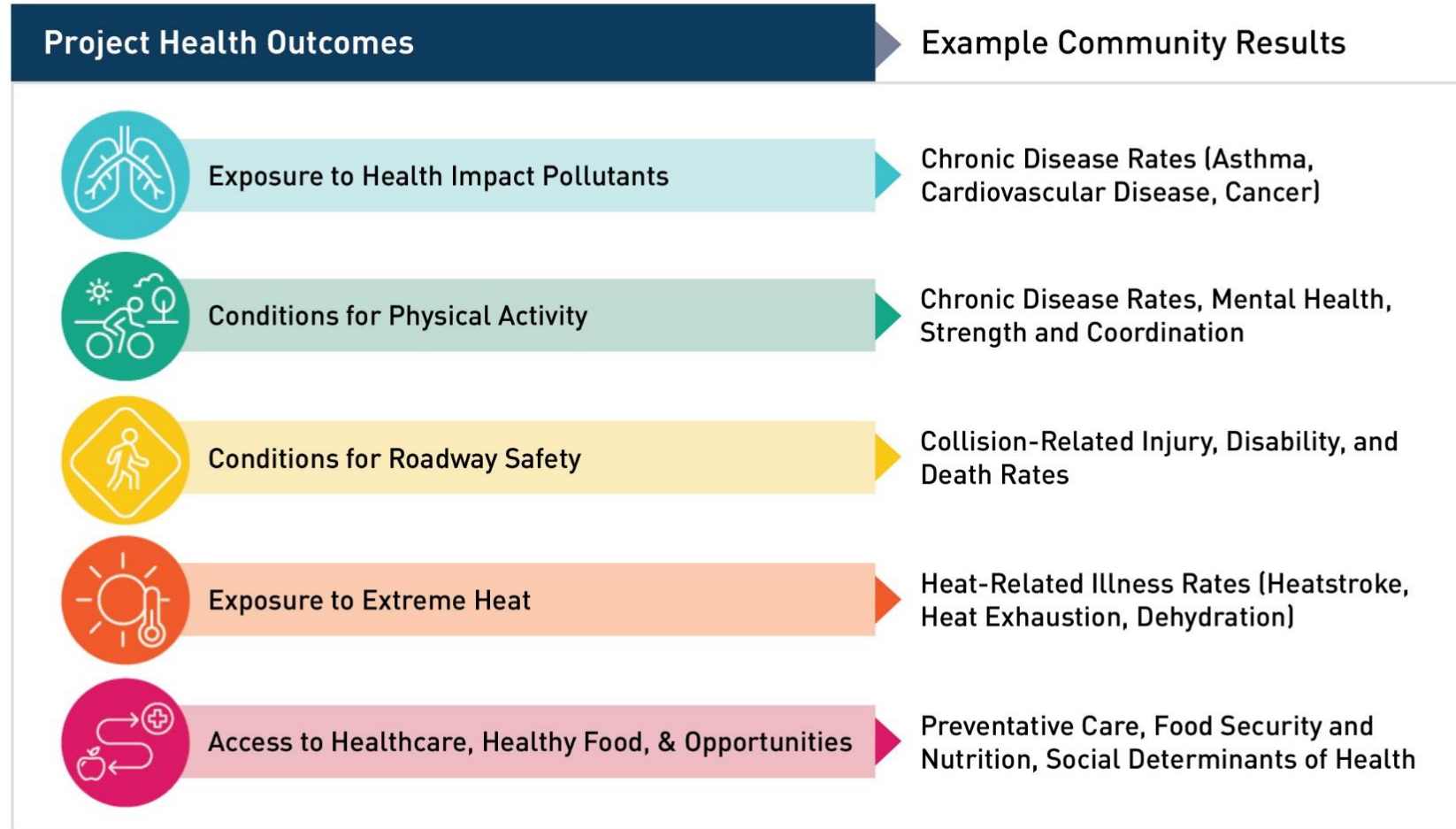
- Applied as pilot
- Guide for facilitating equitable processes and outcomes

Technical Assistance

- Metro will support lower-resource jurisdictions

How are Health Benefits and Concerns being measured and applied in the investment plan?

- > The Community & Health Goal is evaluated by 5 Benefits Criteria (CH1-CH5)
- > Health also applies broadly across other goals
- > Both Benefits and Concerns address related Project Health Outcomes (PHO)



How are Health Benefits and Concerns being measured and applied in the investment plan?

**20 benefits are related to project health outcomes*

Project Health Outcomes (PHO)



Exposure to Health Impact Pollutants



Conditions for Physical Activity



Conditions for Roadway Safety



Exposure to Extreme Heat



Access to Healthcare, Healthy Food, & Opportunities



	PHO	Criteria	Criteria Description
Benefits	●	AQ1 + EQ	Reduce Emissions (NOx, PM2.5)
	●	CH1 + EQ	Reduce Emissions (Health Effects metrics: Diesel Particulate Matter, PM2.5)
	●	CH2 + EQ	Reduce exposure at receptors (HVAC/HEPA, near-roadway vegetation)
	●●	CH3 + EQ	Mode Shift to active transportation, transit
	●	CH5 + EQ	Bike/Ped Access to parks, recreational areas, or open spaces
	●●	SF1 + EQ	Protections for Bike / Users (bike class)
	●●	SF2	Traffic Protections (bike/ped)
	●	SF4	Includes Safety Features
	●	SF6	Traffic Calming Features
	●	EN6 + EQ	Reduce Heat Island Effect; Provide Cooling Features for Users
	●	OP1 + EQ	Access to jobs
	●	OP4	Work Force Development
	●	OP5	Potential Targeted Hire, New Construction Jobs
	●	OP6 + EQ	Access to Quality of Life amenities (grocery stores, healthcare services, schools)
	●	OP7 + EQ	Access to open space, recreation and parks, LA river, etc.
	●●	SA1	Reduces reliance on polluting and energy-intensive modes of travel and goods movement
	●	SA2	Promotes physical activity and health through active transportation and recreation
●	SA3	Improves climate resilience through mitigation of flooding and extreme heat impacts	
●	SA4	Supports job creation in, and workforce transitions to green technology and infrastructure sectors	
●	SA5	Improves cargo efficiencies to minimize trip volumes and emissions from goods movement activity	
Concerns	●●	CON4	Potential for Traffic Diversion
	●	CON5	Potential to increase Localized Emissions / Emissions Shifting
	●●	CON6	Potential for Bike/ped safety impacts
	●●	CON9	Potential for VMT Increases
	●	CON11	Potential to increase impervious cover
	●	CON13	Potential to increase noise pollution
●●	CON15	Potential for new barriers/decreased access	

How are Health Benefits and Concerns being measured and applied in the investment plan?

Example Project:

LB-ELA_0012 Garfield Widening

Example Benefit Criteria:

CH1: Reduce Emissions
(Health Effects Metrics: DPM, PM2.5)

Related Health Outcomes

● *Exposure to Health Impact Pollutants*

Score: 0 (No Benefit)

- > Contributes 0 points to Total CH Goal Score (0.2)
- > Contributes 0 points to Total Project Benefit Score (6.79)

How are Health Benefits and Concerns being measured and applied in the investment plan?

Example Project:

LB-ELA_0012 Garfield Widening

Example Concern Criteria:

CON6: Potential for Bike/ped safety impacts

Related Health Outcomes

- *Conditions for Physical Activity*
- *Conditions for Roadway Safety*

Score: 2 (Medium Concern)

- > Contributes 2 points to Total Concerns Score (14)
- > Could raise potential Equity Flag (Concern + project is predominantly located in Equity Focus Community “EFC” area)

Task Force Discussion

Test for Consensus Discussion

Draft Consensus Statement: "I support moving forward with the LB-ELA tiering results"



Closing Remarks & Next Steps

Upcoming Meeting Schedule

LB-ELA Meetings

Task Force – Small Group Meetings – *Virtual Meetings*

November 14-17, 27-29

CLC – *Virtual Meeting*

Thursday, November 30, 5-7pm

Equity Working Group – *Virtual Meeting*

Thursday, December 7, 5-7pm

Task Force – *Virtual Meeting*

Monday, December 11, 5-7pm

CLC – *Virtual Meeting*

Thursday, December 14, 5-7pm

Metro Meetings

Planning and Programming Committee Meeting

Wednesday, November 15, 1pm

Draft Investment Plan - Status Report

Executive Management Committee Meeting

Thursday, November 16, 11am

Draft Investment Plan - Status Report

Board Meeting

Thursday, November 30, 10am

Draft Investment Plan – Status Report (TBD)

For the most updated list of meeting dates, please visit:

<https://www.metro.net/projects/lb-ela-corridor-plan/>

Stay connected to this project



Michael Cano
Executive Officer
Countywide Planning & Development
LA Metro
One Gateway Plaza, MS 99-13-1
Los Angeles, CA 90012



213.418.3010 W
213.305.0423 C



710corridor@metro.net



<https://www.metro.net/projects/lb-ela-corridor-plan/>



@metrolosangeles



losangelesmetro

Thank you!