

# Westside Purple Line Extension Section 1 Project



**Metro**

# **WESTSIDE PURPLE LINE EXTENSION SECTION 1 PROJECT**

## **MONTHLY PROJECT STATUS REPORT**

THE PREPARATION OF THIS DOCUMENT HAS BEEN FINANCED IN PART THROUGH A GRANT FROM THE U. S. DEPARTMENT OF TRANSPORTATION, FEDERAL TRANSIT ADMINISTRATION (FTA).

**MAY 2018**

## **TABLE OF CONTENTS**

	Page No.
Project Overview & Status.....	1-2
Management Issues.....	3
Project Alignment by Sections.....	4
Project Alignment Section 1.....	5
Base Project Scope.....	6-8
Project Status	
• Project Schedule	
○ Key Milestones Six-Month Look Ahead.....	9
○ Project Summary Schedule.....	10
○ Schedule Measurements.....	11
○ Overall Construction Progress Curve.....	12
○ Major Equipment Delivery.....	13
○ Design-Builder's (C1045) Long Lead Item List.....	14
○ Critical Path Narrative.....	15
○ Project Schedule Contingency Drawdown.....	16
○ Project Schedule Contingency Drawdown Analysis.....	16
• Project Cost	
○ Project Cost Status.....	17
○ Project Cost Analysis.....	17
○ Project Cost Contingency Drawdown.....	18
○ Project Cost Contingency Drawdown Analysis.....	18
○ Disadvantaged Business Enterprise (DBE).....	19
○ Project Labor Agreements (PLA) Status.....	20
○ Summary of Contract Modifications.....	21
• Financial/Grant	
○ Financial/Grant Status.....	22
○ Status of Funding Anticipated.....	22
• Staffing Status	
○ Total Project Staffing.....	23
○ Metro Staffing.....	24

## **TABLE OF CONTENTS (Continued)**

	Page No.
• Construction Management Support Services Consultant.....	24
• Engineering Management Services Consultant.....	25
• Real Estate Status.....	26
• Quality Assurance Status.....	27
• Environmental Status.....	28
• Construction Relations Status.....	29
• Creative Services Status.....	29
• Safety & Security Status.....	30
• Third Party Agreement & Status.....	31
• Advanced Utility Relocation Status.....	32
• Peak Hour and Nighttime Construction Variances.....	33
• Chronology of Events.....	34-36
• Construction Contracts	
o Contract C1045 Status.....	37
o Contract C1078 Status.....	38
• Construction Photographs.....	39-40
<b>Appendices</b>	
• Cost and Budget Terminology.....	41
• List of Acronyms and Abbreviations.....	42-45

## **PROJECT OVERVIEW & STATUS**

Section 1 of the Westside Purple Line Extension Project is the first of three sections to be designed and constructed as part of the Los Angeles County Metropolitan Transportation Authority (LACMTA) Measure R Program. The program was approved by Los Angeles County voters in November 2008 and provides a half-cent sales tax to finance new transportation projects. In April 2012, the three sections of the Project were environmentally cleared and adopted by LACMTA Board of Directors.

Section 1 will extend the existing Purple Line by 3.92 miles beginning at the Wilshire/Western Station. From this station, the twin tunnel alignment will travel westerly within the existing Wilshire Boulevard right-of-way. Stations will be located at the intersections of Wilshire/La Brea, Wilshire/Fairfax, and Wilshire/La Cienega. All three of the station boxes will be located within the Wilshire Boulevard right-of-way with station portals extending to off-street entrances. Two of the stations, Wilshire/La Brea and Wilshire/Fairfax are within the jurisdiction of the City of Los Angeles. The Wilshire/La Cienega Station is within the City of Beverly Hills jurisdiction.

### **Design**

The C1045 Contractor, Skanska, Traylor and Shea (STS), and their final design team, Parsons Transportation Group (PTG), completed final design in June 2017.

The Engineering Management Services (EMS) team continues to provide design support to the C1045 Design/Build Contract, and the Division 20 Maintenance-of-Way and Non-Revenue Vehicle Building Location 64 Contract.

For the Division 20 Maintenance-of-Way and Non-Revenue Vehicle Building Location 64 Contract (C1078), support to Metro continues with engineering services during construction, which included coordination and review of design and construction updates to MOW Building Location 64 and Parts Storage Expansion and responding to RFI's and submittals. *The C1078 contractor is currently responding to Metro comments on the 100% package for Design Unit #3 (Systems Communications).*

*For the C1045 Design/Build contract, the EMS team continues to assist Metro in the review of submittals and RFIs related to tail track tunnel fire protection and grounding, and resolving grounding system open design issues. The EMS team also provided support in the completion of design changes related to revised LADWP and SCE requirements.*

*Notable meetings this period included a continuation of meetings to resolve instrumentation and excavation issues at the Wilshire/Fairfax Station, tunnel instrumentation, and bi-weekly stations and systems meetings.*

Monthly Metro Fire/Life/Safety meetings are occurring.

STS is continuing with the required contractual submittals.

**Major Contract Procurement**

All construction contracts for the Project have been awarded.

**Construction**

*At the Wilshire/Western TBM retrieval site, utility relocations, dewatering activities, temporary ventilation and instrumentation installations continue. Retrieval shaft excavation and bracing below the deck have commenced.*

*Concrete wall pours at the Wilshire/La Brea Station needed to support TBM assembly are scheduled to complete at end of June 2018. Preparations for tunneling continues with TBM Cradle – Conveyor – Grout Plant assembly and car passer installation. TBM assembly is scheduled to commence in July 2018 for the Reach 1 TBM drive to Wilshire/Western.*

*At the Wilshire/Fairfax Station, station excavation to Level D continues along with the installation of walers and struts. Alimak elevator installation to Level C has been completed and work on the pipe canopy tunnel eye is in progress on both the west and east ends of the station.*

*At the Wilshire/La Cienega Station, Level A excavation and waler/strut installation have started for the main station box. Localized excavation at Level B is underway in the staging yards. The hanging of utilities, work on the ventilation system and the permanent power duct bank continue to move forward. All K-rail from north side of Wilshire Boulevard has been removed.*

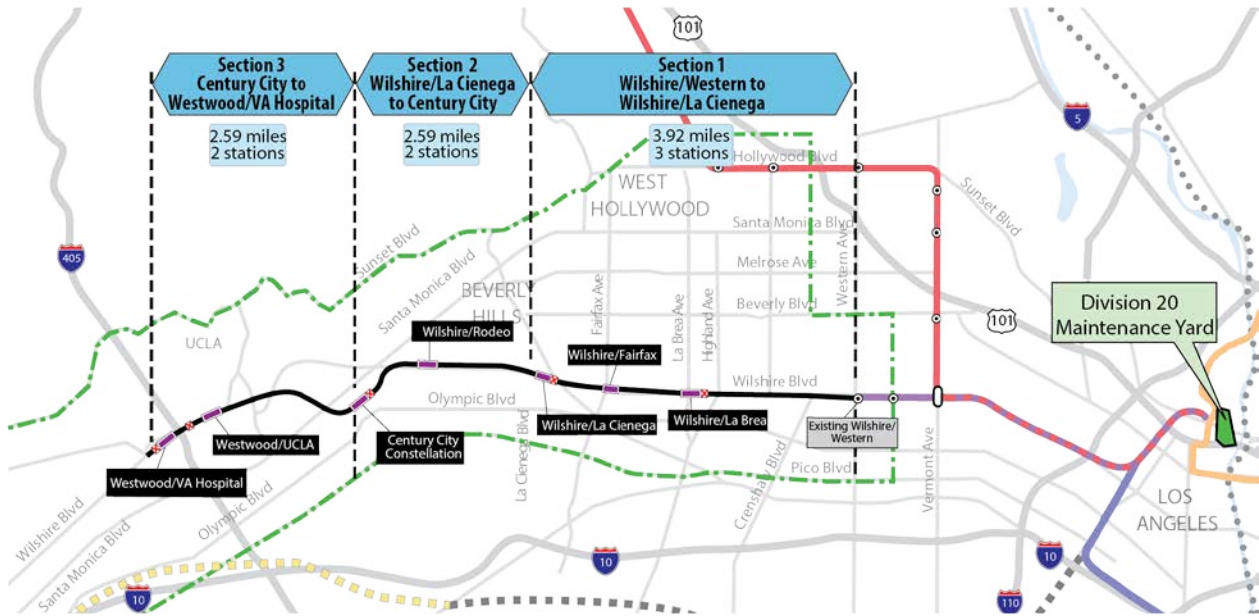
The two, Herrenknecht Tunneling Systems USA, Inc., Tunnel Boring Machines (TBMs) were delivered to the United States in December 2017. All TBM components are at the contractor's storage site in Riverside, California. Tunnel instrumentation installation along Reach 1 continues. Tunneling is planned to start in September 2018.

*For the Division 20 Maintenance-of-Way and Non-revenue Vehicle Building Location 64, slab on grade (SOG) pours, along with all other above grade structures, have completed. Interior mechanical, electrical and plumbing (MEP) rough-in and framing continues on all three floors and work on the building envelope (exterior precast panels) has commenced. Work on the electrical yard also has progressed. Foundation work at the Division 20 Parts and Storage Expansion area has completed and structural steel erection is planned for June 2018.*

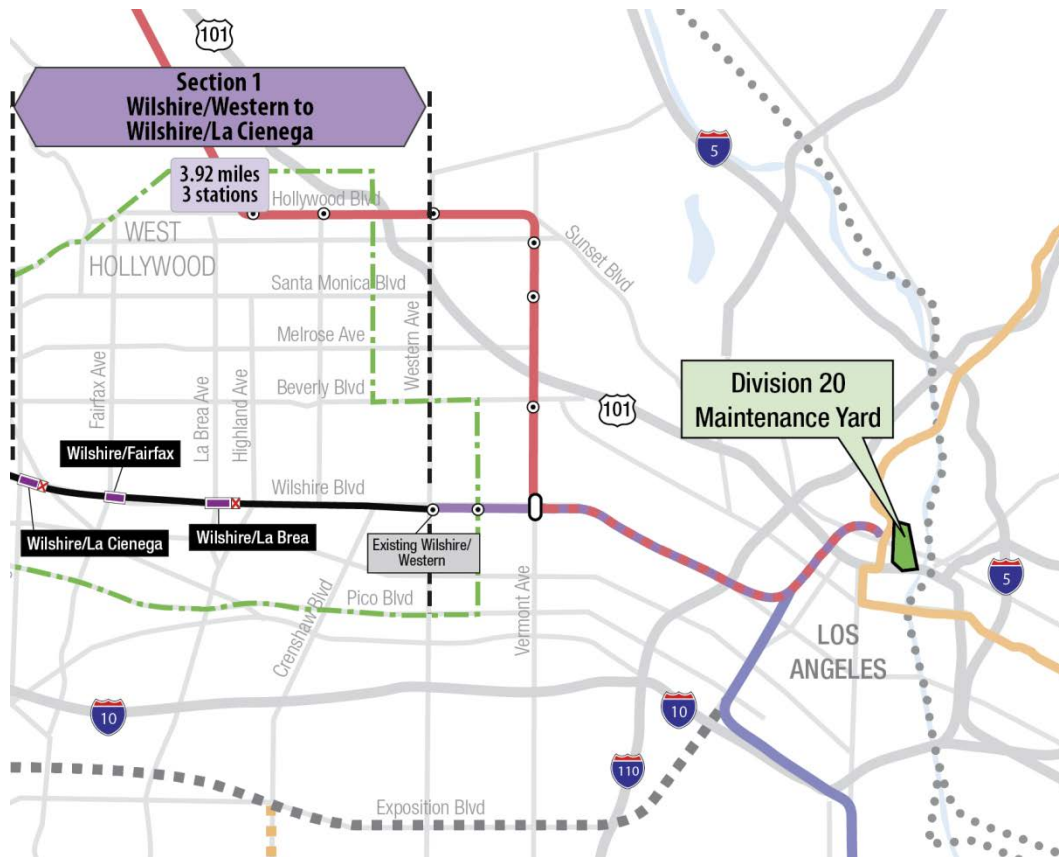
**MANAGEMENT ISSUES**

No Management Issues this period.

## PROJECT ALIGNMENT BY SECTIONS



### PROJECT ALIGNMENT SECTION 1



## **BASE PROJECT SCOPE**

Section 1 of the Westside Purple Line Extension Project is the first of three sections to be designed and constructed as part of the Los Angeles County Metropolitan Transportation Authority (LACMTA) Measure R Program. The program was approved by Los Angeles County voters in November 2008 and provides a half-cent sales tax to finance new transportation projects. In April 2012, the three sections of the Project were environmentally cleared and adopted by LACMTA Board of Directors.

Section 1 will extend the existing Purple Line by 3.92 miles beginning at the Wilshire/Western Station. From this station, the twin tunnel alignment will travel westerly within the existing Wilshire Boulevard right-of-way. Stations will be located at the intersections of Wilshire/La Brea, Wilshire/Fairfax, and Wilshire/La Cienega. All three of the station boxes will be located within the Wilshire Boulevard right-of-way with station portals extending to off-street entrances. Two of the stations, Wilshire/La Brea and Wilshire/Fairfax are within the jurisdiction of the City of Los Angeles. The Wilshire/La Cienega Station is within the City of Beverly Hills jurisdiction.

The Wilshire/La Brea Station box will be located under the center of Wilshire Boulevard in between Detroit Street and Orange Drive. A double crossover will be located east of the station box. The station entrance will be on the northwest corner of Wilshire Boulevard and La Brea Avenue.

The Wilshire/Fairfax Station box will be located under the center of Wilshire Boulevard west of Fairfax Avenue to west of Ogden Drive. The station entrance will be on the southeast corner of Wilshire Boulevard and Orange Grove Avenue.

The Wilshire/La Cienega Station box will be located under the center of Wilshire Boulevard immediately east of La Cienega Boulevard. A double crossover will be located east of the station box. The station entrance will be on the northeast corner of Wilshire Boulevard and La Cienega Boulevard. Since the station will be the terminus station for Section 1, tail tracks will be located west of the station box.

### **Contract C1034 – Wilshire/Fairfax Exploratory Shaft**

Metro constructed an exploratory shaft to observe ground conditions prior to the award of Contract C1045. The location of the exploratory shaft was adjacent to the future Wilshire/Fairfax Station. The construction of the shaft included furnishing and installing monitoring instruments, ventilation, and record and report instrumentation data during the excavation of the shaft. After construction of the shaft, the shaft was maintained for an observation time period. Afterwards, the shaft was dismantled and the site backfilled in a condition acceptable to the property owner. The contract was substantially completed on October 31, 2014.

### **Contract C1048 – Wilshire/La Brea Advanced Utility Relocations**

The work scope of this contract included the relocation of existing LADWP power, water utilities and a sewer line within the construction limits of the Wilshire/La Brea Station. The contractor was responsible for working in streets, procuring materials, and coordinating with the utility owner. The contractor constructed the new facilities in accordance with the utility plans and specifications, provided traffic control, restored streets, and supported utility crews installing cabling and during cut-over of the existing utilities. The contract was substantially completed on October 27, 2014.

**Contract C1055 – Wilshire/Fairfax Advanced Utility Relocations**

The work scope of this contract included the relocation of existing LADWP power and water utilities within the construction limits of the Wilshire/Fairfax Station. The contractor was responsible for working in streets, procuring materials, and coordinating with the utility owner. The contractor constructed the new facilities in accordance with utility plans and specifications, provided traffic control, restored streets, and supported utility crews installing cabling and during cut-over of the existing utilities. The contract was substantially completed on October 7, 2015.

**Contract C1056 – Wilshire/La Cienega Advanced Utility Relocations**

The work scope of this contract included the relocation of existing City of Beverly Hills water, storm drain and sewer utilities within the construction limits of the Wilshire/La Cienega Station. The contractor was responsible for working in streets, procuring materials, and coordinating with the utility owner. The contractor constructed the new facilities in accordance with utility plans and specifications, provided traffic control, restored streets, and supported utility crews during cut-over of the existing utilities. The contract was substantially completed on August 5, 2016.

**Contract C1045 – Tunnels, Stations, Trackwork, Systems and Systems Integration Testing**

The procurement of this contract utilizes a two-step approach with the submittal of qualification statements through a Request for Qualification (RFQ) process, prequalification of qualified proposers followed by the release of a Request for Proposals (RFP) soliciting technical and price proposals with an option at Metro's discretion for Best and Final Offers (BAFO).

The Design/Build contract provides for final design and construction of the infrastructure along the 3.92 mile alignment. Contract scope includes demolition and removal of structures and clearing sites to facilitate construction operations. The structures to be constructed include twin bored tunnels, complete with cross-passages and walkways, including all mechanical, electrical and finish work. A retrieval shaft will be constructed to the west of the existing Wilshire/Western Station for extraction of the tunnel boring machines. Three underground stations are to be constructed, two with double-crossovers, and the terminus station to include tail tracks. Each station has a single entrance plaza with stairs, escalators and elevators which meet ADA requirements. The scope of work includes all architectural finishes, mechanical, electrical, systems and equipment including train control, traction power, communications, trackwork and the system tie-in to the existing Metro Purple Line, testing and commissioning.

**Contract C1078 – Division 20 Maintenance-of-Way and Non-Revenue Vehicle Building Location 64**

The Design/Build contract provides for final design and construction of a new Maintenance-Of-Way (MOW) stores and Non-Revenue Vehicle (NRV) building at the south end of the existing Division 20 Yard (Location 64). The displacement of the existing MOW stores building and NRV facility are due to the proposed turn-back facility site in the yard.

## **BASE PROJECT SCOPE (Continued)**

### **Metro Furnished Equipment**


Metro has procured a contract to provide 34 Heavy Rail Vehicles (HRV) necessary to operate the extension to the Purple Line. An additional contract will be procured for the Universal Fare System (UFS). The scope of the HRV contract includes design, manufacturing, testing and delivery of the vehicles. The scope of the UFS contract will include design, fabrication and installation of equipment at the three stations and system testing.

### **Start Up**

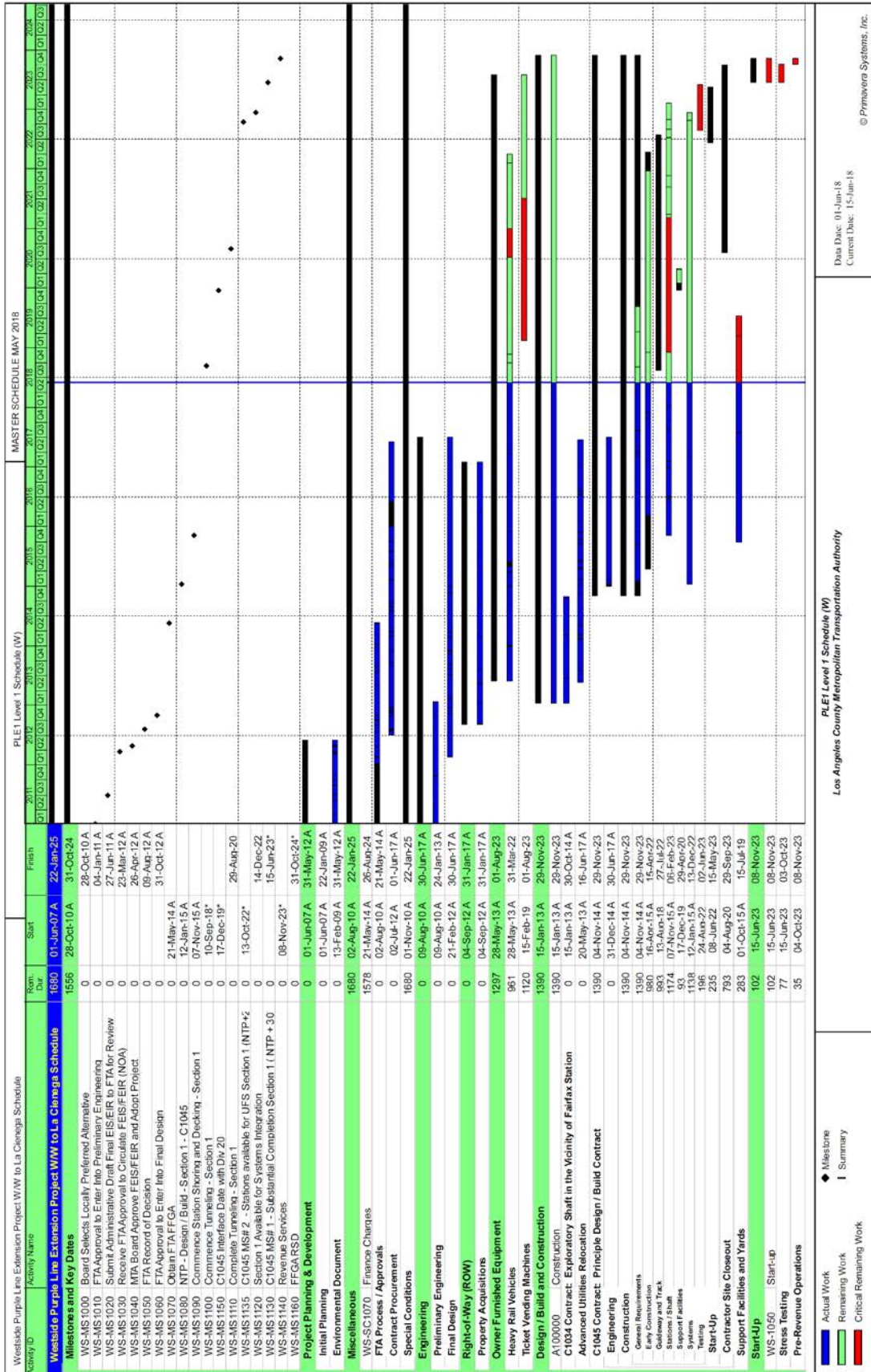
The commencement of pre-revenue operations will be determined by Metro. Generally, all systems integration testing will have been completed and passed. All testing will be required to include and pass a “stress test” of maximum operational service levels to be acceptable. Pre-Revenue Operations include train runs, especially those involving multiple trains, on the integrated and fully operational extension; rehearsal of expected revenue operations scenarios; as well as abnormal and emergency scenarios in which random combinations of system interactions are tested; equipment “burned-in”; and training of Metro personnel who will eventually operate and maintain the extension and for emergency services personnel. Activities occurring during Pre-Revenue Operations are carried out by a designated Metro Project Rail Activation Group.

**KEY MILESTONES SIX-MONTH LOOK AHEAD**

	Milestone Date	Jun-18	Jul-18	Aug-18	Sep-18	Oct-18	Nov-18
C1045 Wilshire/Western Level B Struts Begin	06/14/18	<input type="checkbox"/>					
C1078 Division 20 Parts & Storage Expansion Mobilize for Structural Steel	06/14/18	<input type="checkbox"/>					
C1045 Wilshire/La Brea Station Concrete Wall Pours Complete - for TBM Assembly	06/27/18	<input type="checkbox"/>					
C1045 Commence TBM#1 Assembly	07/11/18		<input type="checkbox"/>				
C1045 Wilshire/Fairfax Complete Level D Struts	07/19/18		<input type="checkbox"/>				
C1045 Commence TBM#2 Assembly	08/08/18			<input type="checkbox"/>			
C1045 TBM #1 - Tunnel Mining Begins Reach 1	09/06/18				<input type="checkbox"/>		
C1045 Wilshire/Fairfax Begin Shotcrete at Hammerhead	09/14/18				<input type="checkbox"/>		
C1045 TBM #2 - Tunnel Mining Begins Reach 1	10/04/18					<input type="checkbox"/>	
C1045 Wilshire/Fairfax Reach Bottom of Excavation	10/30/18					<input type="checkbox"/>	
C1045 Wilshire/La Brea Begin Scaffolding for Concourse Slab	11/13/18						<input type="checkbox"/>

 MTA Staff    
  Other Agencies    
  Contractor

PROJECT SUMMARY SCHEDULE

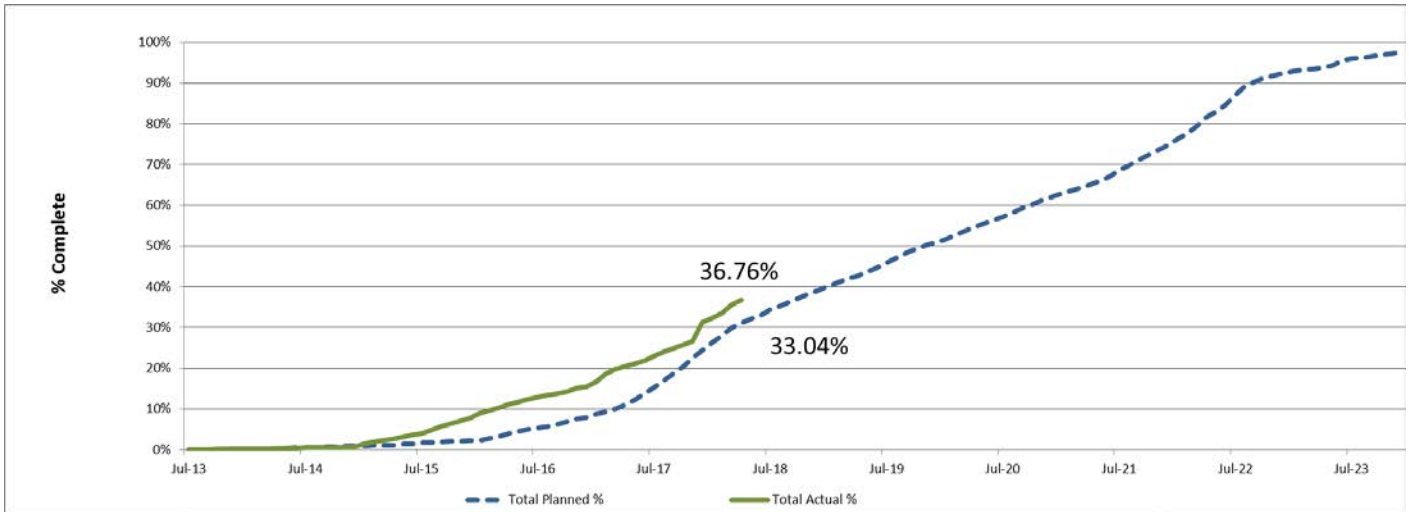


**SCHEDULE MEASUREMENTS**

	Status	Change from Last Period	Comment
Forecast Revenue Service	11/8/2023	None	
FFGA Revenue Service	10/31/2024	None	
<b>Final Design Progress:</b>			
Contract C1045	100.00%	0.00%	
Contract C1078	89.90%	1.25%	
<b>Construction Contracts Progress*:</b>			
Contract C1048	100.00%	0.00%	Completed on schedule
Contract C1045	34.36%	1.06%	
Contract C1055	100.00%	0.00%	Completed on schedule
Contract C1056	100.00%	0.00%	Completed on schedule
Contract C1078	46.54%	6.74%	

\*Note: Physical completion assessment reflects work completed and work in progress.

### OVERALL CONSTRUCTION PROGRESS CURVE



*The actual overall construction progress is 36.76% versus a planned of 33.04% through May 2018. The progress curves represent a composite percentage for the physical progress of work performed to complete the Project’s construction contracts, including the major Design-Build (C1045), the three Advanced Utility Relocations (C1048, C1055 & C1056), and the Division 20 MOW & NRV Building Location 64 (C1078).*

The physical progress percentage excludes non-construction items such as contractor’s design and construction mobilization costs and all general requirement costs not tied specifically to a construction work effort.

**MAJOR EQUIPMENT DELIVERY**

	<b>Initial Procurement</b>	<b>Submittal</b>	<b>Delivery</b>	<b>Installation</b>
<b>Tunnel Boring Machine</b>	1/29/16A	5/30/16A	12/15/17A	7/11/18
Deliver to Site - Station HVAC System	11/26/18	10/16/18	10/21/19	9/3/20
Deliver to Site - Ventilation Fans	11/26/18	10/16/18	2/13/20	2/14/20
Deliver to Site - Elevators	7/29/18	6/1/18	11/5/19	8/5/21
Deliver to Site - Escalators	9/27/18	6/1/18	1/4/20	8/5/21
<b>Heavy Rail Vehicles</b>	7/16/15A	4/4/19	3/31/22	1/9/23
<b>Ticket Vending Machines</b>	2/20/20	10/17/20	4/15/21	10/12/21

**Westside Purple Line Extension Section 1 Project  
Monthly Project Status Report**

**May 2018**

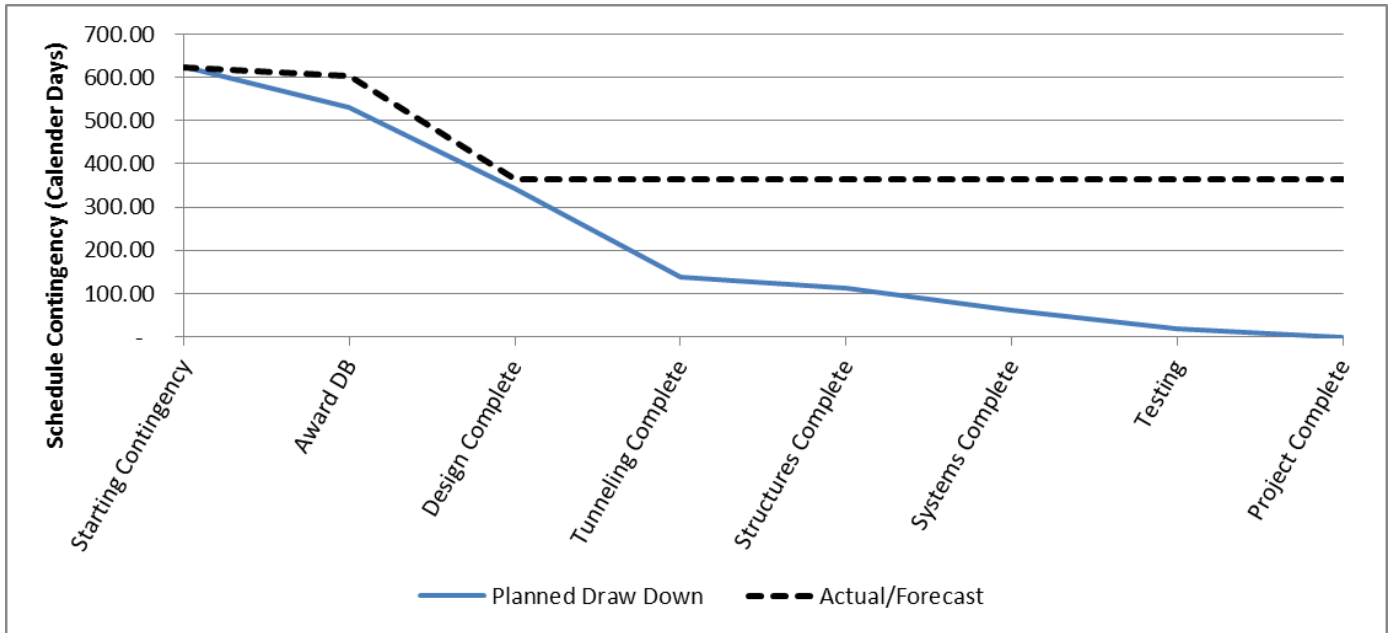
**DESIGN BUILDER'S (C1045) LONG LEAD ITEM LIST**

Item	Initial Procurement	Approved Submittal	Delivery	Installation Date
Procure / Deliver Fiber Optic Cable	17-Aug-18	13-Sep-18	12-Dec-18	14-Sep-20
Procure / Deliver Innerduct	17-Aug-18	13-Sep-18	12-Dec-18	20-Aug-20
Procure / Deliver Radio Cable	17-Aug-18	13-Sep-18	12-Dec-18	1-Oct-20
SCADA: Procure / Deliver Devices	16-Jan-18 A	02-Feb-17 A	18-May-18 A	22-Apr-21
Procure / Deliver SCADA Cable	17-Aug-18	13-Sep-18	12-Dec-18	20-Aug-20
Procure / Deliver TPS Bonding Cable	18-Oct-18	15-Nov-18	13-Feb-19	28-Sep-21
Procure / Deliver Traction Power Cable	18-Oct-18	15-Nov-18	13-Feb-19	21-May-20
TPS: Procure/Deliver BLS Equipment & Devices	18-Oct-18	15-Nov-18	13-Feb-19	21-May-20
Mfgr/Assemble/Wire DC Rectifier/Transformer - La Cienega TPSS	15-Feb-19	9-Mar-19	7-Jun-19	12-Mar-19
Mfgr/Assemble/Wire HV Metering Switchgear - La Cienega TPSS	15-Feb-19	9-Mar-19	7-Jun-19	12-Mar-19
Mfgr/Assemble/Wire DC Switches - Fairfax GBS	15-Feb-19	9-Mar-19	7-Jun-19	12-Mar-19
Mfgr/Assemble/Wire HV Metering Switchgear - Fairfax GBS	10-Jun-19	3-Jul-19	1-Oct-19	3-Jul-19
Mfgr/Assemble/Wire HV Metering Switchgear - La Brea TPSS	2-Oct-19	30-Oct-19	28-Jan-20	25-Oct-19
CCTV: Assemble/Rack & Stack/Factory Test COM Equipment for Western	18-Apr-19	18-May-19	16-Aug-19	8-Dec-21
CCTV: Assemble/Rack & Stack/Factory Test COM Equipment for La Brea	1-Jun-18	31-Jul-18	14-Sep-18	30-Nov-21
CCTV: Assemble/Rack & Stack/Factory Test COM Equipment for Fairfax	15-Aug-18	18-Sep-18	17-Dec-18	16-Sep-21
CCTV: Assemble/Rack & Stack/Factory Test COM Equipment for La Cienega	18-Dec-18	17-Jan-19	17-Apr-19	6-Dec-21
CTS: Assemble/Rack & Stack/Factory Test COM Equipment for Western	4-Apr-19	4-May-19	2-Aug-19	20-Dec-21
CTS: Assemble/Rack & Stack/Factory Test COM Equipment for La Brea	1-Jun-18	2-Jul-18	31-Aug-18	25-Jun-21
CTS: Assemble/Rack & Stack/Factory Test COM Equipment for Fairfax	1-Aug-18	4-Sep-18	3-Dec-18	3-May-21
CTS: Assemble/Rack & Stack/Factory Test COM Equipment for La Cienega	4-Dec-18	3-Jan-19	3-Apr-19	20-Sep-21
EMER MGMT: Assemble/Rack & Stack/Factory Test COM Equipment for La Brea	14-Jun-18	14-Jul-18	12-Oct-18	11-Apr-22
EMER MGMT: Assemble/Rack & Stack/Factory Test COM Equipment for Fairfax	14-Sep-18	19-Oct-18	17-Jan-19	8-Feb-22
EMER MGMT: Assemble/Rack & Stack/Factory Test COM Equipment for La Cienega	18-Jan-19	15-Feb-19	16-May-19	7-Mar-22
FIRE ALARM: Assemble/Rack & Stack/Factory Test COM Equipment for Western	4-Apr-19	4-May-19	2-Aug-19	17-Dec-22
FIRE ALARM: Assemble/Rack & Stack/Factory Test COM Equipment for La Brea	1-Jun-18	17-Jul-18	31-Aug-18	25-Oct-21
FIRE ALARM: Assemble/Rack & Stack/Factory Test COM Equipment for Fairfax	1-Aug-18	4-Sep-18	3-Dec-18	13-Aug-21
FIRE ALARM: Assemble/Rack & Stack/Factory Test COM Equipment for La Cienega	4-Dec-18	3-Jan-19	3-Apr-19	2-Dec-21
GAS DETECTION: Assemble/Rack & Stack/Factory Test COM Equipment for Western	17-May-19	19-Jun-19	17-Sep-19	15-Feb-21
GAS DETECTION: Assemble/Rack & Stack/Factory Test COM Equipment for La Brea	14-Jun-18	13-Aug-18	12-Oct-18	15-Feb-21
GAS DETECTION: Assemble/Rack & Stack/Factory Test COM Equipment for Fairfax	14-Sep-18	19-Oct-18	17-Jan-19	11-Aug-21
GAS DETECTION: Assemble/Rack & Stack/Factory Test COM Equipment for La Cienega	18-Jan-19	15-Feb-19	16-May-19	12-May-21
INTRUSION: Assemble/Rack & Stack/Factory Test COM Equipment for Western	4-Jun-19	4-Jul-19	2-Oct-19	26-Jan-21
INTRUSION: Assemble/Rack & Stack/Factory Test COM Equipment for La Brea	29-Jun-18	31-Jul-18	29-Oct-18	11-Jan-22
INTRUSION: Assemble/Rack & Stack/Factory Test COM Equipment for Fairfax	1-Oct-18	3-Nov-18	1-Feb-19	27-Oct-21
INTRUSION: Assemble/Rack & Stack/Factory Test COM Equipment for La Cienega	4-Feb-19	5-Mar-19	3-Jun-19	21-Dec-21
RADIO: Assemble/Rack & Stack/Factory Test COM Equipment for Western	23-Jan-18 A	28-Feb-17 A	7-Sep-18	26-Oct-20
RADIO: Assemble/Rack & Stack/Factory Test COM Equipment for La Brea	23-Jan-18 A	28-Feb-17 A	7-Sep-18	21-Sep-21
RADIO: Assemble/Rack & Stack/Factory Test COM Equipment for Fairfax	23-Jan-18 A	28-Feb-17 A	7-Sep-18	16-Jul-21
RADIO: Assemble/Rack & Stack/Factory Test COM Equipment for La Cienega	23-Jan-18 A	28-Feb-17 A	7-Sep-18	11-Jun-21
SCADA: Assemble/Rack & Stack/Factory Test COM Equipment for Western	4-Apr-19	4-May-19	2-Aug-19	16-Feb-21
SCADA: Assemble/Rack & Stack/Factory Test COM Equipment for La Brea	03-Apr-18 A	2-Jul-18	31-Aug-18	3-Sep-21
SCADA: Assemble/Rack & Stack/Factory Test COM Equipment for Fairfax	1-Aug-18	4-Sep-18	3-Dec-18	28-Jun-21
SCADA: Assemble/Rack & Stack/Factory Test COM Equipment for La Cienega	4-Dec-18	3-Jan-19	3-Apr-19	22-Sep-21
SEISMIC: Assemble/Rack & Stack/Factory Test COM Equipment for La Brea	1-Jun-18	2-Jul-18	31-Aug-18	19-Apr-22
SEISMIC: Assemble/Rack & Stack/Factory Test COM Equipment for Fairfax	1-Aug-18	4-Sep-18	3-Dec-18	16-Feb-22
SEISMIC: Assemble/Rack & Stack/Factory Test COM Equipment for La Cienega	4-Dec-18	3-Jan-19	3-Apr-19	31-Mar-22
TELEPHONE: Assemble/Rack & Stack/Factory Test COM Equipment for Western	17-May-19	19-Jun-19	17-Sep-19	27-Jan-21
TELEPHONE: Assemble/Rack & Stack/Factory Test COM Equipment for La Brea	1-Jun-18	15-Jul-18	13-Sep-18	15-Mar-22
TELEPHONE: Assemble/Rack & Stack/Factory Test COM Equipment for Fairfax	14-Sep-18	19-Oct-18	17-Jan-19	17-Dec-22
TELEPHONE: Assemble/Rack & Stack/Factory Test COM Equipment for La Cienega	18-Jan-19	15-Feb-19	16-May-19	7-Feb-22
TPIS: Assemble/Rack & Stack/Factory Test COM Equipment for La Brea	1-Jun-18	31-Jul-18	14-Sep-18	23-Feb-22
TPIS: Assemble/Rack & Stack/Factory Test COM Equipment for Fairfax	15-Aug-18	18-Sep-18	17-Dec-18	20-Jan-22
TPIS: Assemble/Rack & Stack/Factory Test COM Equipment for La Cienega	18-Dec-18	17-Jan-19	17-Apr-19	15-Mar-22
UPS: Manufacture/Factory Test COM Equipment for La Brea	1-Jun-18	17-Jul-18	31-Aug-18	12-Aug-20
UPS: Manufacture/Factory Test COM Equipment for Fairfax	1-Aug-18	4-Sep-18	3-Dec-18	22-Sep-21
UPS: Manufacture/Factory Test COM Equipment for La Cienega	4-Dec-18	3-Jan-19	3-Apr-19	24-Sep-21
PROCURE GAS/WATERPROOFING MATERIALS FOR LA BREA STATION	13-Dec-17 A	18-Apr-17A	18-Dec-17 A	19-Dec-17 A
FABRICATE CANOPY STRUCTURE - FAIRFAX STATION	28-Oct-18	27-Oct-18	25-Jan-19	23-Aug-21
FABRICATE CANOPY STRUCTURE - LA CIENEGA STATION	26-Jan-19	25-Jan-19	25-Apr-19	24-Sep-21
Mfgr/Assemble/Wire DC Switchgear - La Cienega TPSS	15-Feb-19	23-Apr-19	22-Jul-19	5-Nov-21
Mfgr/Assemble/Wire AC Switchgear - La Cienega TPSS	15-Feb-19	23-Apr-19	22-Jul-19	19-Nov-21
Mfgr/Assemble/Wire DC Switchgear - La Brea TPSS	23-Jul-19	1-Oct-19	30-Dec-19	19-Jun-20
Mfgr/Assemble/Wire AC Switchgear - Fairfax GBS	23-Jul-19	1-Oct-19	30-Dec-19	28-Dec-20
Mfgr/Assemble/Wire AC Switchgear - La Brea TPSS	31-Dec-19	5-Mar-20	3-Jun-20	30-Jun-20
ATC: Procure/Deliver Switch Machines	01-Jul-16 A	1-Apr-16 A	20-Dec-16 A	7-Feb-22
COMPLETE MOCK-UP & FABRICATE CANOPY STRUCTURE - LA BREA STATION	30-Jun-18	29-Jul-18	27-Oct-18	15-Nov-21
FAB/DELIVER SOLDIER PILES / BEAMS - WESTERN TBM RETRIEVAL SHAFT	19-Sep-17 A	3-Nov-17A	1-Dec-17A	2-Dec-17A
FAB/DELIVER SOLDIER PILES / BEAMS - FAIRFAX STATION	26-Jul-16 A	9-Jun-16 A	1-Aug-16 A	18-Aug-16 A
FAB/DELIVER SOLDIER PILES / BEAMS - LA CIENEGA STATION	23-Jan-17 A	18-Jan-17 A	1-Mar-17 A	20-Mar-17 A
ATC: Assemble/Rack & Stack TC&C Equipment for Western	15-Jun-18	26-Jun-18	10-Aug-18	26-Jun-20
ATC: Assemble/Rack & Stack ATC Equipment for La Brea	01-Sep-17 A	2-Jun-17 A	29-Nov-17 A	5-Jun-20
ATC: Assemble/Rack & Stack ATC Equipment for Fairfax	11-Sep-17 A	10-Sep-17 A	22-Dec-17 A	15-Dec-20
ATC: Assemble/Rack & Stack ATC Equipment for La Cienega	20-Dec-17 A	18-Oct-17 A	26-Feb-18 A	28-Oct-21
FABRICATE TRACK MATERIALS	6-Aug-18	23-Nov-18	21-Feb-19	17-Dec-19
ATC: Procure/Deliver WS Equipment & Devices	01-Dec-15 A	23-Sep-15 A	20-Jun-18	28-Sep-21
ATC: Procure/Deliver Components & Materials - Western	01-Aug-16 A	2-May-16 A	10-Aug-18	23-Jun-20
ATC: Procure/Deliver Components & Materials - La Brea	01-Aug-16 A	19-Feb-16 A	29-Nov-17 A	5-Jun-20
ATC: Procure/Deliver Components & Materials - Fairfax	01-Aug-16 A	2-May-16 A	22-Dec-17 A	15-Dec-20
ATC: Procure/Deliver Components & Materials - La Cienega	01-Aug-16 A	2-May-16 A	27-Apr-18 A	28-Oct-21

## **CRITICAL PATH NARRATIVE**

The critical path for the Westside Purple Line Extension Section 1 Project begins with the procurement process for the C1045 Design/Build contract, mobilization of the design team for the selected contractor, and the start of final design for station boxes and tunnels. Final design is concurrent with the C1055 Wilshire/Fairfax Advanced Utility Relocation and C1056 Wilshire/La Cienega Advanced Utility Relocation contracts being performed by Metro's AUR Contractors and by third party utility companies. Upon completion of advanced utility relocations, the Design/Build contractor begins installation of soldier piles, first on the north side of the Wilshire/La Brea Station box, and then on the south side. Street decking is then installed, the station structural box is excavated, and invert concrete is placed. Tunneling then begins, first driving eastbound from Wilshire/La Brea to Wilshire/Western. TBMs are removed through a retrieval shaft at Wilshire/Western, reassembled at Wilshire/La Brea, and then driven westbound to Wilshire/La Cienega. Following construction of cross passages, the critical path continues through construction of the Wilshire/La Brea station box, installation of track-work and traction power, systems integration and testing, and pre-revenue operations.

### **PROJECT SCHEDULE CONTINGENCY DRAWDOWN**



### **PROJECT SCHEDULE CONTINGENCY DRAWDOWN ANALYSIS**

The project schedule contingency drawdown curve is based on a November 8, 2023 Revenue Service Date (RSD).

**PROJECT COST STATUS**

DOLLARS IN THOUSANDS

SCC CODE	DESCRIPTION	ORIGINAL BUDGET	CURRENT BUDGET		COMMITMENTS		EXPENDITURES		CURRENT FORECAST		CURRENT BUDGET / FORECAST VARIANCE
			PERIOD	TO DATE	PERIOD	TO DATE	PERIOD	TO DATE	PERIOD	TO DATE	
10	GUIDEWAY & TRACK ELEMENTS	388,294	-	388,294	-	380,970	4,004	120,202	-	387,938	(356)
20	STATIONS, STOPS, TERMINALS, INTERMODAL	440,621	-	440,621	-	447,759	15,252	124,988	-	489,322	48,701
30	SUPPORT FACILITIES: YARDS, SHOPS, ADMIN. BLDGS	43,323	-	43,323	-	41,556	2,079	14,647	-	43,352	29
40	SITWORK & SPECIAL CONDITIONS	751,566	-	754,491	56	780,379	4,529	504,670	-	814,446	59,956
50	SYSTEMS	113,574	-	113,574	-	99,544	178	18,568	-	115,199	1,625
<b>CONSTRUCTION SUBTOTAL (10-50)</b>		<b>1,737,378</b>	<b>-</b>	<b>1,740,303</b>	<b>56</b>	<b>1,750,207</b>	<b>26,042</b>	<b>783,076</b>	<b>-</b>	<b>1,850,257</b>	<b>109,954</b>
60	ROW, LAND, EXISTING IMPROVEMENTS	175,634	-	175,634	-	202,980	7	174,463	-	202,980	27,346
70	VEHICLES	160,196	-	160,196	-	98,118	-	14,192	-	108,302	(51,893)
80	PROFESSIONAL SERVICES	412,710	-	414,785	-	347,100	5,028	292,139	-	510,504	95,719
<b>SUBTOTAL (10-80)</b>		<b>2,485,918</b>	<b>-</b>	<b>2,490,918</b>	<b>56</b>	<b>2,398,405</b>	<b>31,077</b>	<b>1,263,870</b>	<b>-</b>	<b>2,672,044</b>	<b>181,126</b>
90	UNALLOCATED CONTINGENCY	248,592	-	248,592	-	-	-	-	-	111,871	(136,721)
100	FINANCE CHARGES	375,470	-	375,470	-	-	-	-	-	331,065	(44,405)
<b>TOTAL PROJECTS 465518 &amp; 865518 (10-100)</b>		<b>3,109,980</b>	<b>-</b>	<b>3,114,980</b>	<b>56</b>	<b>2,398,405</b>	<b>31,077</b>	<b>1,263,870</b>	<b>-</b>	<b>3,114,980</b>	<b>-</b>
ENVIRONMENTAL/PLANNING - 405518		8,505	-	8,505	-	8,505	-	8,505	-	8,505	-
ENVIRONMENTAL/PLANNING - 465518		30,865	-	30,865	-	30,865	-	30,852	-	30,865	-
<b>TOTAL PROJECTS 405518 &amp; 465518 (ENV / PLAN'G)</b>		<b>39,370</b>	<b>-</b>	<b>39,370</b>	<b>-</b>	<b>39,370</b>	<b>-</b>	<b>39,357</b>	<b>-</b>	<b>39,370</b>	<b>-</b>
<b>TOTAL PROJECTS 405518, 465518 &amp; 865518</b>		<b>3,149,350</b>	<b>-</b>	<b>3,154,350</b>	<b>56</b>	<b>2,437,775</b>	<b>31,077</b>	<b>1,303,227</b>	<b>-</b>	<b>3,154,350</b>	<b>-</b>

**PROJECT COST ANALYSIS**

**Original Budget**

The Original Budget of \$3.2 billion reflects the Board approved Life of Project Budget, July 24, 2014, plus Finance Charges of \$0.4 billion.

**Current Budget and Current Forecast**

The Current Budget and Current Forecast remains the same this period at \$3.2 billion.

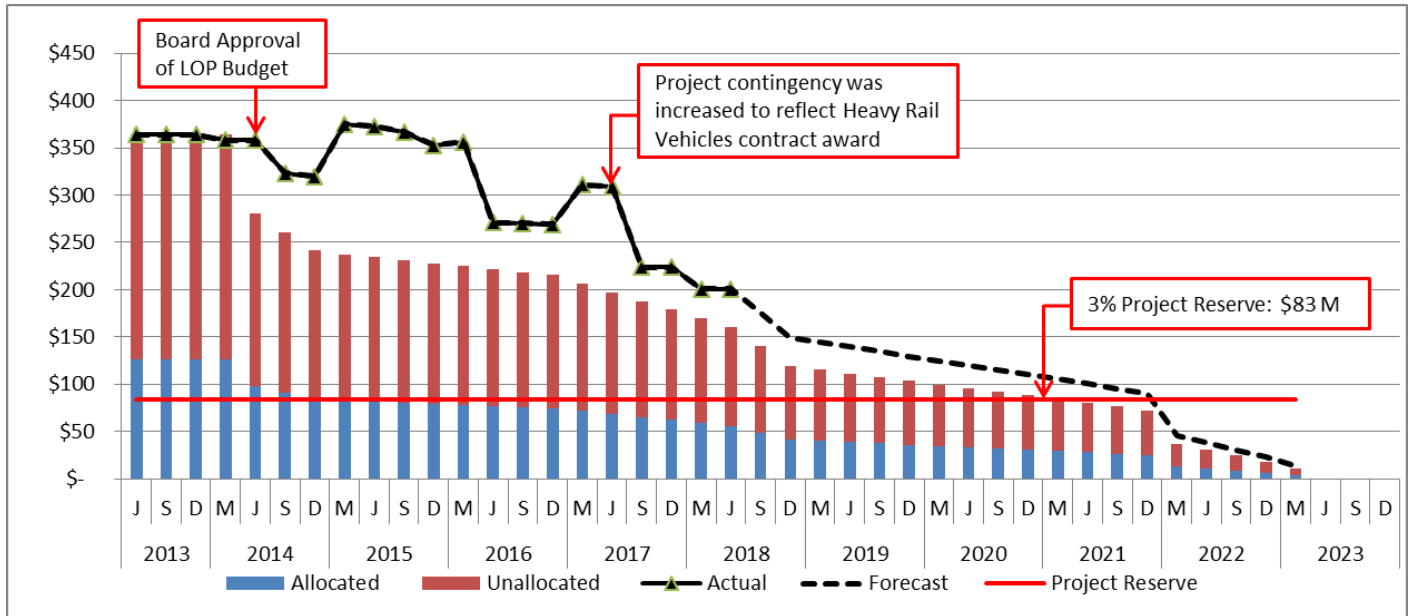
**Commitments**

The Commitments increased by \$56K million due to an approved Task Orders for Environmental Services. The \$2.4 billion in Commitments to date represents 77.3% of the Current Budget.

**Expenditures**

The Expenditures increased by \$31.1 million primarily for costs associated with the Design/Build Contract C1045 and Design/Build Contract C1078, City of Beverly Hills (Memorandum of Agreement), Engineering Management Services, Construction Management Support Services, and Metro Project Administration. The \$1.3 billion in Expenditures to date represents 41.3% of the Current Budget.

**PROJECT COST CONTINGENCY DRAWDOWN**



**PROJECT COST CONTINGENCY DRAWDOWN ANALYSIS**

The Current Budget of \$3.2 billion (plus Finance Charges of \$0.4 billion) includes a project cost contingency of \$320.6 million or 10.2% of the total project. The project cost contingency of \$320.6 million is based upon the Life of Project (LOP) Budget that was approved by the Board in July 2014. The LOP Budget also included an allocated contingency amount of \$72.0 million. The allocated contingency is an amount to cover anticipated but unknown contract modifications issued by Metro where applicable to specific contracts within each Standard Cost Category (SCC).

Included in the project cost contingency drawdown is a 3% project reserve threshold. Metro’s Board is to be notified when it becomes necessary to drawdown contingency below the project reserve threshold to cover project costs. This was adopted by the Metro Board of Directors in September 2012.

The project cost contingency drawdown curve is based on a November 8, 2023 Revenue Service date.

*The project contingency remained unchanged this period.*

<b>PROJECT COST CONTINGENCY</b>					
<b>DOLLARS IN THOUSANDS</b>					
	<b>Original Contingency (Budget)</b>	<b>Previous Period</b>	<b>Current Period</b>	<b>To-Date</b>	<b>Remaining Contingency (Forecast)</b>
Unallocated Contingency	248,592	(136,721)	-	(136,721)	111,871
Allocated Contingency	71,963	16,982	-	16,982	88,945
<b>Total Contingency</b>	<b>320,555</b>	<b>(119,739)</b>	<b>-</b>	<b>(119,739)</b>	<b>200,816</b>

**DISADVANTAGED BUSINESS ENTERPRISE (DBE)**

**DISADVANTAGED BUSINESS ENTERPRISE (DBE) STATUS**

**Contract C1045 Westside Purple Line Extension - Section 1**

*(Reported Data as of May 2018)*

• **DBE Goal – Design**

A numerically expressed percentage of funds apportioned to Design Contracts and is calculated based upon the relative availability of DBE firms as compared to all firms in the relevant geographic market area. 20.25%

• **Current DBE Commitment – Design**

Total DBE Committed Dollars divided by Total Contract Value for Design or Construction. \$13,086,625  
(20.25%)

• **Current DBE Participation**

Total amount paid to date to DBEs divided by the amount paid to date to Prime. \$12,353,196  
(19.48%)

Fourteen (14) Design DBE subcontractors have been identified to-date.

• **DBE Goal – Construction**

A numerically expressed percentage of funds apportioned to Construction Contracts and is calculated based upon the relative availability of DBE firms as compared to all firms in the relevant. 17.00%

• **Current DBE Commitment – Construction**

Contract commitment divided by current contract value for Construction. \$261,838,935  
(17.00%)

• **Current DBE Participation**

Total amount paid to date to DBEs divided by the amount paid to date to Prime. \$89,065,255  
(15.56%)

One hundred-four (104) Construction DBE subcontractors have been identified to-date.

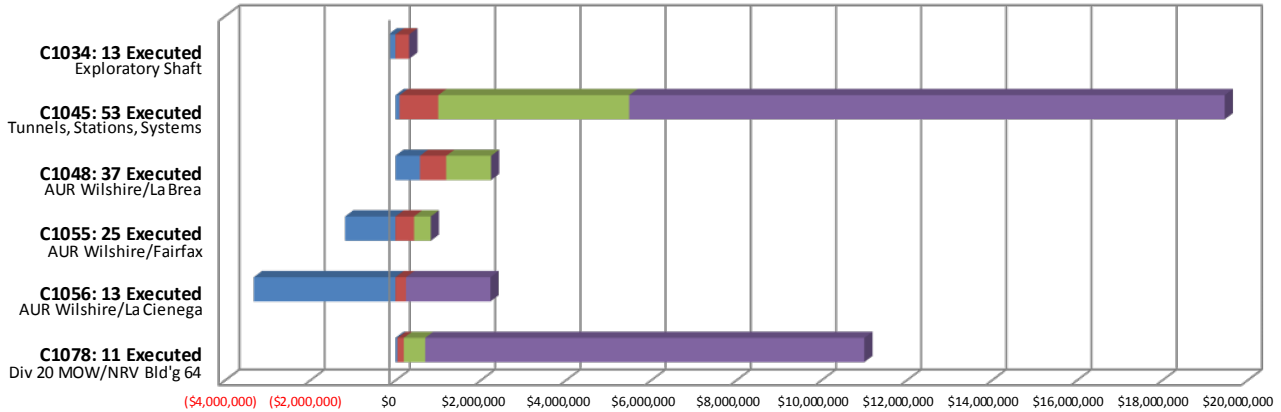
**PROJECT LABOR AGREEMENTS (PLA) STATUS**

**Contract C1045 Westside Purple Line Extension, Section 1 Design-Build**  
(Reporting Data as of March 2018)

• <b>Targeted Worker Goal</b>	40.00%
Construction work to be performed by residents from Economically Disadvantaged Area in the United States	
• <b>Targeted Worker Current Participation</b>	65.29%
• <b>Apprentice Worker Goal</b>	20.00%
Construction work to be performed by Apprentices	
• <b>Apprentice Worker Current Participation</b>	16.65%
• <b>Disadvantaged Worker Goal</b>	10.00%
Construction work to be performed by Disadvantaged Workers who are residents of the United States	
• <b>Disadvantaged Worker Current Participation</b>	9.40%

**SUMMARY OF CONTRACT MODIFICATIONS**

**Contract Modifications (MODs) by Cost Level**



	C1034 13 Executed	C1045 53 Executed	C1048 37 Executed	C1055 25 Executed	C1056 13 Executed	C1078 11 Executed	Total
Under \$100K	(164,288)	95,248	574,448	(1,179,119)	(3,324,793)	44,770	<b>(3,953,734)</b>
\$100K to \$250K	321,000	908,997	616,809	436,190	245,024	151,324	<b>2,679,344</b>
\$250K to \$1M	-	4,482,506	1,050,980	390,709	-	500,798	<b>6,424,993</b>
Over \$1M	-	13,979,069	-	-	1,983,179	10,309,067	<b>26,271,315</b>
<b>Total Contract MODs</b>	<b>156,712</b>	<b>19,465,820</b>	<b>2,242,237</b>	<b>(352,220)</b>	<b>(1,096,590)</b>	<b>11,005,959</b>	<b>31,421,918</b>
<b>Contract Award Amount</b>	<b>6,487,020</b>	<b>1,636,418,585</b>	<b>6,181,000</b>	<b>14,430,000</b>	<b>20,250,000</b>	<b>52,830,310</b>	<b>1,736,596,915</b>
<b>% of Contract MODs</b>	<b>2.4%</b>	<b>1.2%</b>	<b>36.3%</b>	<b>-2.4%</b>	<b>-5.4%</b>	<b>20.8%</b>	<b>1.8%</b>

Percent of Contract MODs equals the Total Contract MODs divided by the Contract Award Amount.

Thirteen Contract MODs with a total value of \$0.2 million have been executed since the award of Contract C1034 – Exploratory Shaft Construction by Innovative Construction Solutions (ICS). The contract has been completed and is closed out.

Fifty-three Contract MODs with a total value of \$19.5 million have been executed since the award of Contract C1045 – Tunnels, Stations, Trackwork, Systems and Systems Integration Testing by Skanska - Traylor - Shea, a Joint Venture.

Thirty-seven Contract MODs with a total value of \$2.2 million have been executed since the award of Contract C1048 – Advanced Utility Relocations at Wilshire/La Brea by Metro Builders & Engineering Group, LTD. The contract has been completed and is closed out.

Twenty-five Contract MODs with a total value of <\$0.4> million have been executed since the award of Contract C1055 – Advanced Utility Relocations at Wilshire/Fairfax by W. A. Rasic Construction Company, Inc. The contract has been completed and is closed out.

Thirteen Contract MODs with a total value of <\$1.1> million have been executed since the award of Contract C1056 – Advanced Utility Relocations at Wilshire/La Cienega by Steve Bubalo Construction Co. The contract has been completed and is closed out.

Eleven Contract MODs with a total value of \$11.0 million have been executed since the award of Contract C1078 – Division 20 Maintenance-of-Way and Non-Revenue Vehicle Building Location 64.

**FINANCIAL/GRANT STATUS**

SOURCE	(IN MILLIONS OF DOLLARS)									
	(A) ORIGINAL BUDGET	(B) TOTAL FUNDS ANTICIPATED	(C) TOTAL FUNDS AVAILABLE	(D) COMMITMENTS \$	(D/B) %	(E) EXPENDITURES \$	(E/B) %	(F) BILLED TO FUNDING SOURCE \$	(F/B) %	
FEDERAL - SECTION 5309 NEW STARTS	\$1,250.000	\$1,250.000	\$365.000	\$1,250.000	100%	\$365.000	29%	\$365.000	29%	
FEDERAL CMAQ	\$12.171	\$12.171	\$12.171	\$12.171	100%	\$12.171	100%	\$12.171	100%	
FEDERAL SECTION 5339 - ALTERNATIVES ANALYSIS	\$0.512	\$0.512	\$0.512	\$0.512	100%	\$0.512	100%	\$0.512	100%	
MEASURE R - TIFIA LOAN	\$856.000	\$856.000	\$340.644	\$340.644	40%	\$340.644	40%	\$340.644	40%	
MEASURE R 35%	\$869.178	\$874.178	\$593.732	\$748.232	86%	\$498.684	57%	\$446.184	51%	
STATE STIP RIP	\$2.568	\$2.568	\$2.568	\$2.568	100%	\$2.568	100%	\$2.568	100%	
STATE CAPITAL PROJECT LOANS - OTHERS *	\$83.648	\$83.648	\$83.648	\$83.648	100%	\$83.648	100%	\$67.923	81%	
CITY OF LOS ANGELES	\$75.273	\$75.273	\$0.000	\$0.000	0%	\$0.000	0%	\$0.000	0%	
<b>TOTAL</b>	<b>\$3,149.350</b>	<b>\$3,154.350</b>	<b>\$1,398.275</b>	<b>\$2,437.775</b>	<b>77.3%</b>	<b>\$1,303.227</b>	<b>41.3%</b>	<b>\$1,235.002</b>	<b>39.2%</b>	

ORIGINAL BUDGET BASED ON JULY 2014 BOARD APPROVED LOP BUDGET

\* OTHERS INCLUDE TDA ADMINISTRATION (\$4.1M), LTF GENERAL REVENUES (\$1.8M), AND LEASE REVENUES (\$37.8M)

**STATUS OF FUNDS ANTICIPATED**

**FEDERAL SECTION 5309 NEW STARTS:** FTA Grant CA-03-0824 for \$65.0 million was awarded on June 2, 2014. FTA Grant CA-03-0824 Amendment No. 1 for \$100.0 million was awarded on August 10, 2015. FTA Grant CA-2016-017 for \$100.0 million was awarded on September 8, 2016. FTA Grant CA-2016-017 Amendment No. 1 for \$100.0 million was awarded on September 22, 2017. Funds are available for drawdown.

**FEDERAL SECTION 5339 ALTERNATIVE ANALYSIS:** FTA Grant CA-39-0006 of \$0.5 million was awarded on July 25, 2014. Funds are available for drawdown.

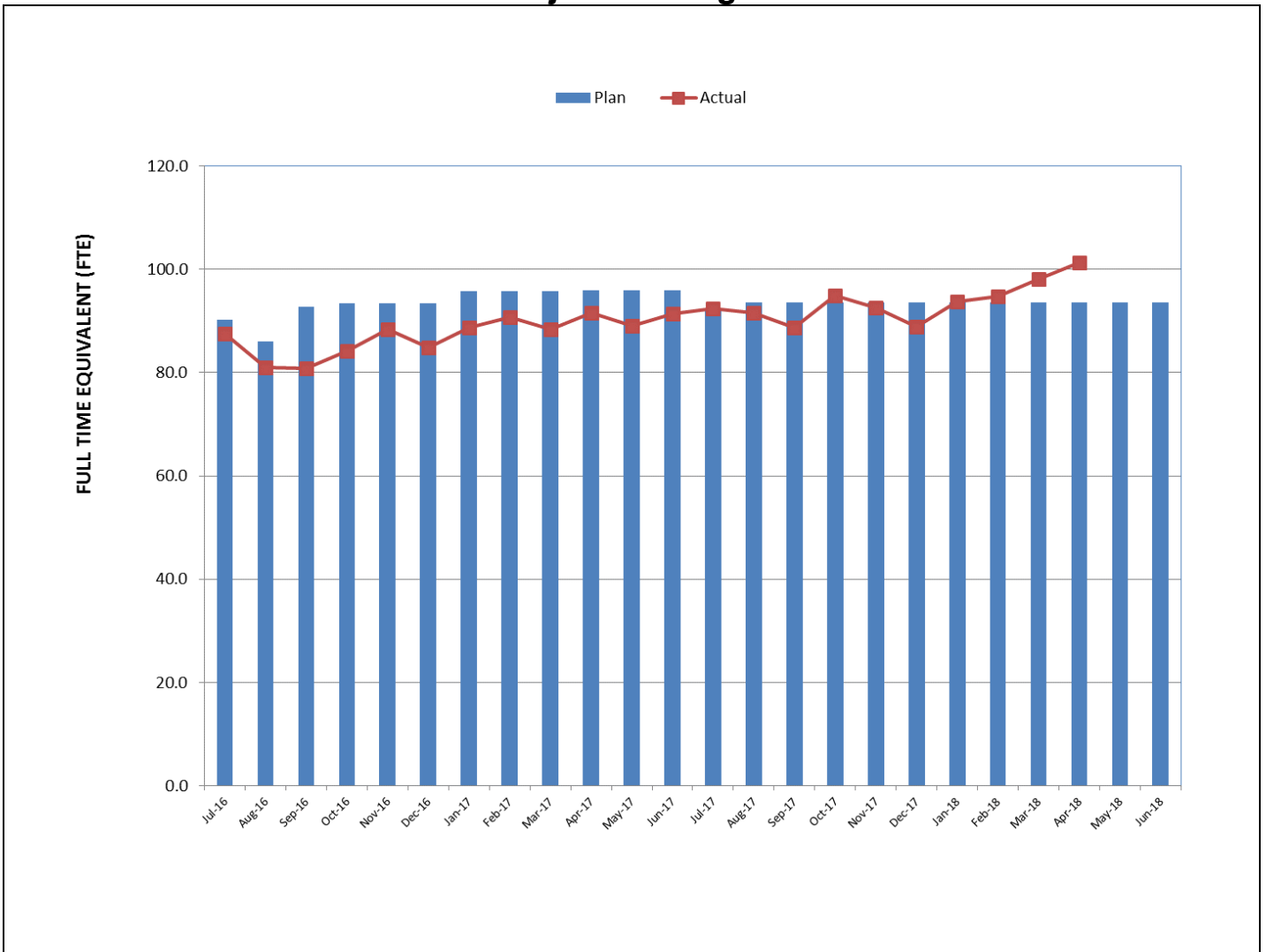
**MEASURE R – TIFIA LOAN (Transportation Infrastructure Finance & Innovation Act):** TIFIA Loan was executed on May 21, 2014 for \$856.0 million. \$340.7 million funds are available for drawdown.

**MEASURE R 35%:** \$593.7 million have been allocated to the Project through FY18. Funds are available for drawdown.

**STATE STIP RIP:** State grant application of \$8.4 million, of which \$2.6 million has been allocated to this project, was awarded on July 26, 2007. Funds are available for drawdown.

**CMAQ (Congestion Mitigation & Air Quality):** FTA Grant CA-95-X264 for \$12.2 million was awarded on July 27, 2015. Funds are available for drawdown.

**STAFFING STATUS  
Total Project Staffing – FTES**

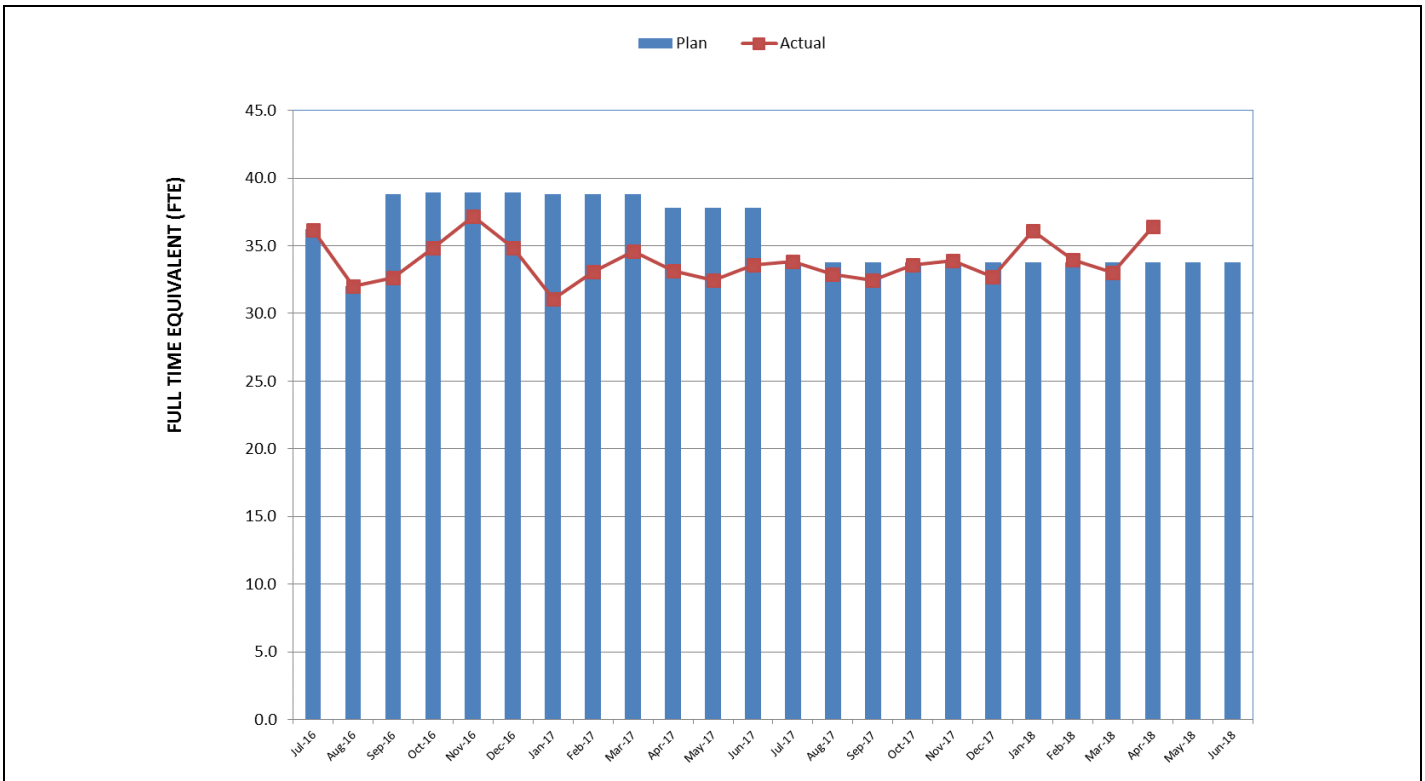


**TOTAL PROJECT STAFFING**

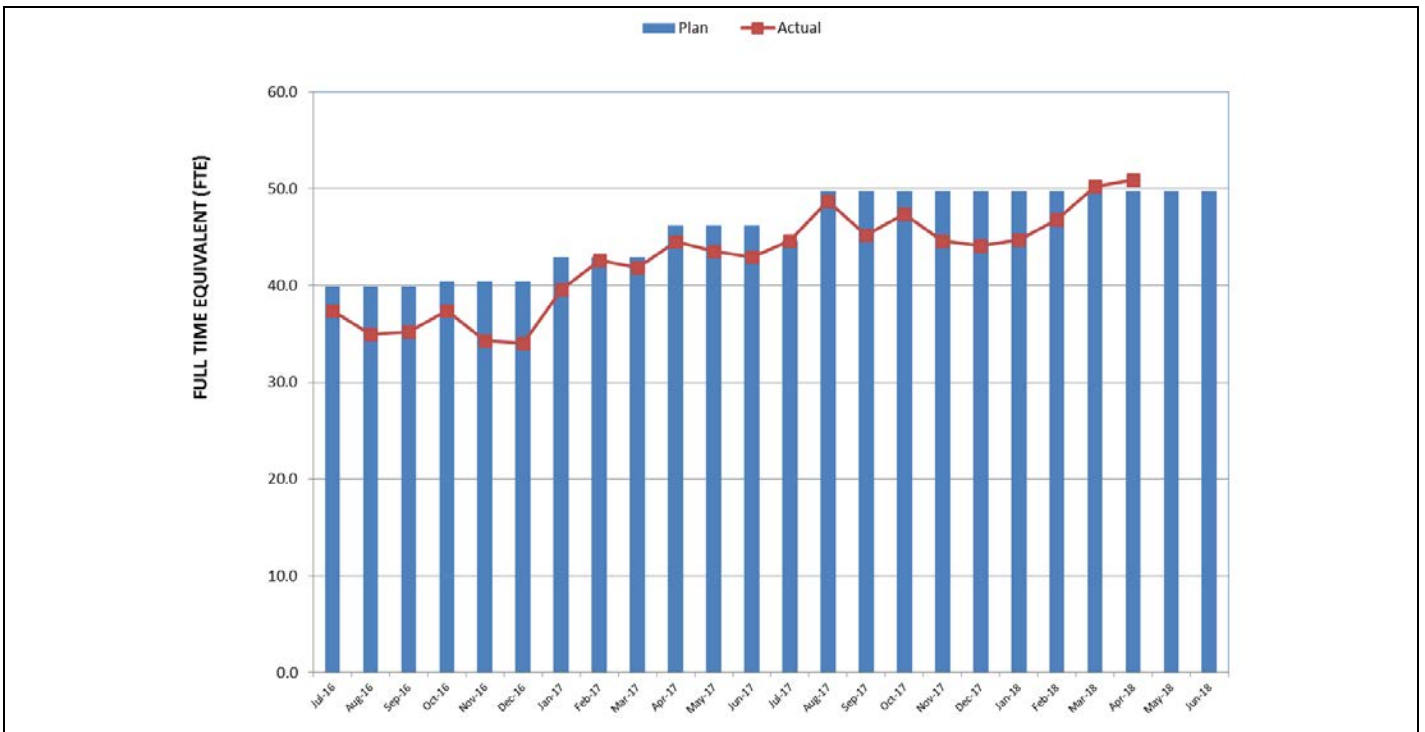
The overall FY18 Total Project Staffing Plan averages 93.4 FTEs per month.

*For April 2018, there were a total of 36.0 FTEs for MTA's Project Administration Staff and 64.9 FTEs for Consulting Staff. The total project staffing for April 2018 was 100.9 FTEs.*

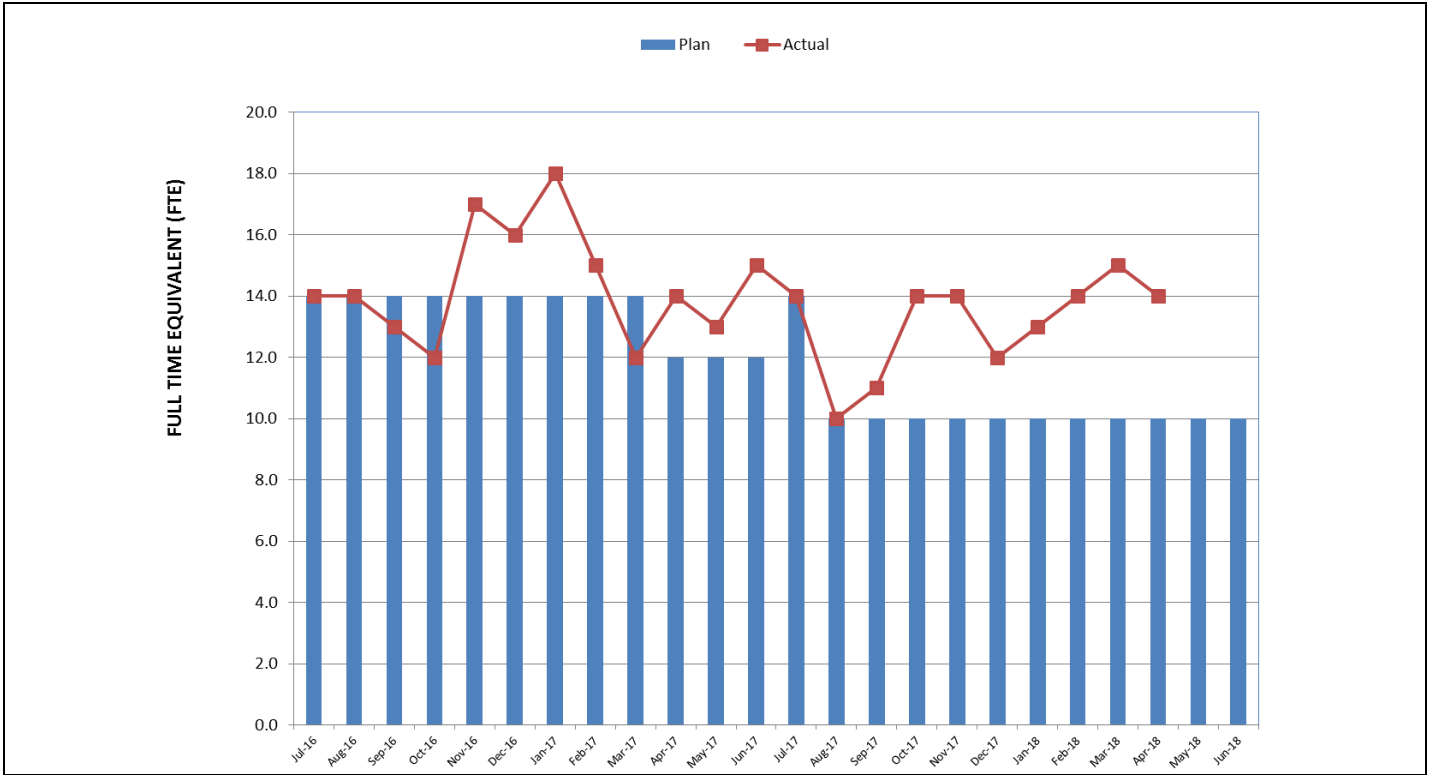
**STAFFING STATUS (Continued)  
METRO STAFFING – FTES**



**CONSTRUCTION MANAGEMENT SUPPORT  
SERVICES CONSULTANT – FTES**



**STAFFING STATUS (Continued)  
ENGINEERING MANAGEMENT SERVICES CONSULTANT – FTES**



**REAL ESTATE STATUS**

<b>Purple Line Extension Section 1 - Real Estate Status Summary</b>								
Description	Number of Parcels	Certified	Appraisals Completed	Offers Made	Agreements/ Settlements Signed	Relocations		Parcels Available
						Required	Completed	
Full Takes	9	9	9	9	8	109	109	9
Part Takes	6	6	6	6	6	0	0	6
TCE	4	4	4	4	2	0	0	4
<b>Total Parcels</b>	<b>19</b>	<b>19</b>	<b>19</b>	<b>19</b>	<b>16</b>	<b>109</b>	<b>109</b>	<b>19</b>

Metro has possession of all the parcels by either acquisition, possession and use agreements or stipulations. The C1045 contractor has possession of all properties needed to construct the Project.

## **QUALITY ASSURANCE STATUS**

### **C1045 – Tunnels, Stations, Trackwork, Systems and Systems Integration Testing**

- Attended weekly Project staff meetings and progress meetings with the Contractor Skanska/Traylor/Shea (STS).
- Attended monthly Quality Task Force Meeting with Contractor's Quality Department.
- Ongoing discussions and coordination with the Engineering Management Services Consultant (EMSC) and Construction Management Support Services Consultant (CMSSC) support staff for quality oversight.
- Reviewed daily inspection reports from the Contractor/Field Technician and CMSSC oversight inspection personnel. Inspections show that the work is predominately compliant.
- Reviewed and provided comments on quality related submittals construction work plan, project specifications, product data and quality manuals.
- Continue to track structural support members which require modification through open items list and RFI process (Wilshire/Fairfax and Wilshire/La Cienega Support of Excavation).
- Engaged in oversight activities for the installation of HDPE membrane and placement of reinforcing steel members for construction of station invert base at the Wilshire/La Brea Station. Contractor's Independent Lab is on site to verify proper installation and testing.
- Engaged in oversight for the excavation and installation of structural steel members for the Wilshire/Fairfax and Wilshire/La Cienega Station SOEs.
- Processed 24 surveillances, 11 Quality Action Requests, 11 Nonconformance Reports and 1 Corrective Action Request.

### **C1078 – Division 20 MOW and NRV Building Location 64**

- Attended weekly Project Staff Meetings and Progress Meetings with the Contractor.
- Reviewed and provided comments on quality related submittals.
- Reviewed daily inspection reports from Contractor's quality assurance inspection team. Inspections show that the work is predominately compliant.
- Attended Workshops and Readiness Review Meetings for upcoming construction activities.
- *Engaged in oversight activities for dry wall installation, fire suppression system, plumbing and mechanical piping.*
- Processed 2 surveillances, 7 Quality Action Requests and 2 Nonconformance Reports.

## **ENVIRONMENTAL STATUS**

- Conducted field environmental monitoring and spot inspections for construction noise, vibration, stormwater BMPs, dust and cultural resources for C1045, C1078, and Third Party work activities.
- Attended weekly Project staff meetings and progress meetings with the Contractor Skanska/Traylor/Shea (STS) C1045, Clark Construction C1078 and adjacent city jurisdictions.
- Conducted weekly Environmental Compliance Progress Meetings and monthly Environmental Mitigation (MMRP) update meeting with C1045 contractor.
- Evaluated environmental sampling results (soil, air, water) to confirm compliance with local and state regulatory requirements and assess potential changes to associated protocol, permits and project activities.
- Regular communication with contractor to verify soil management practices for all stations, shafts and yards including waste profiling and AQMD Rule 1166 compliance.
- Coordinated supplemental noise ambient analysis of receptors affected by future cross passage activities and re-evaluated established time periods and threshold levels.
- *Submitted 20th MMRP Quarterly Report to FTA.*
- *Evaluated issues requiring potential revisions, expert interpretation or amendment to EIR/EIS mitigation measures including landfill capacity.*
- *Reviewed Work Plans and attended Workshops and Readiness Review Meetings for various activities including Noise and Vibration Monitoring and Control Plans.*
- *Cogstone paleo monitors continued excavation oversight. A large mammal tooth and limb bone of a small animal were found at the Wilshire/La Cienega Station.*
- *Assessed startup of dewatering operations at the Wilshire/Western Shaft including flow quantities.*
- *Reviewed NPDES Self-Monitoring Report.*
- *Evaluated waterline break impacts and conveyed discharge quantities and sampling information to the City of Los Angeles and Regional Water Quality Control Board.*
- *Coordinated enhanced mitigation efforts for ventilation fan noise impacts.*

## **CONSTRUCTION RELATIONS STATUS**

- *Produced and distributed five construction work notices for construction activities.*
- *Produced and distributed weekly construction look ahead emails to project stakeholders.*
- *Held Meetings and made Project Presentations at the following: Mid City West Community Council, Elected Officials Briefing, Beverly Hills City Hall, elected official deputies, Construction Community Meetings and various stakeholders.*
- *Continued additional business mitigations including: alternative parking options, business signage, street signs and print ads at no cost to the businesses.*
- *Attended the following meetings: Construction Management, Construction Relations, Environmental Mitigations, STS Third Party Workshop, Beverly Hills MOA, Marketing, Social Media, Bus Relocations and Stops, DOT/Elected Officials, Beverly Hills Traffic Coordination, Board of Public Works, Coordination for the Maintenance of Way Building, Brown Bag meeting on Metro's evolving programs to address homeless on Metro system and construction sites, Community Relations All-Hands and Beverly Hills Community Stakeholder Meetings.*
- *Updated website, Facebook, Twitter as needed. Published monthly PLE (Purple Line Extension) newsletter to email list.*
- *Continued with the "Eat, Shop, Play Spotlight" campaign to advertise and promote businesses that participate in ESP Wilshire and Beverly Hills.*

## **CREATIVE SERVICES STATUS**

- *Responded to RFIs and submittals.*
- *Participated in Design Build Workshops and document reviews.*
- *Continued design development for Wilshire Customer Center artwork relocation.*
- *Continued design development for MOW Building Location 64.*

## **SAFETY & SECURITY STATUS**

- *Clark Construction (C1078) experienced a recordable injury during April 2018.*
- The C1045 Design Builder's construction activities (day, swing and weekend) and the C1078 Maintenance of Way Building site continue to be monitored to document contractor compliance with contract specifications.
- Metro Safety staff attended weekly Tool Box Meetings, Progress Meetings, Readiness Reviews, and other project meetings to evaluate Contractors Safety Program compliance with contract requirements.
- *Metro Construction Safety hosted Monthly All Hands Safety Meeting for all Westside-Purple Line Extension Contractors on May 24, 2018.*
- Construction Safety staff continue to work with Program Management and Construction Relations staff to monitor issues related to public concerns regarding noise, traffic and public/construction interfaces and public interactions with the construction crews.
- *April 2018 Contractor Work Hours (Design & Construction): 71,740*
- *Contractor - Project to Date Work Hours (Design & Construction) (through 4/30/2018): 2,191,130*
- *Total Project to Date Work Hours (Contractor & the IPO Staff) (through 4/30/2018): 2,749,488*
- Project to Date Recordable Injury Rate: 0.9 (Twelve Recordable Injuries) (each rate is per 200,000 work hours) (National Rate: 2.8)
- Project to Date Total Days Away (DART) Injury Rate: 0.3 (Four Time Away From Work Injuries) (National Rate: 1.7)
- *Project to Date Total Days Away Rate: 29.0 (399 Days Away From Work) (No National Rate Published)*
- National Rates for Heavy and Civil Construction (NAICS Code 237) are for Calendar Year 2016, published by USBLS in November 2017. (No change for these statistics between 2015 & 2016.)

**THIRD PARTY AGREEMENT STATUS**

<b>Third Party</b>	<b>Type of Agreement</b>	<b>Forecast Execution Date</b>	<b>Required Need Date</b>	<b>Status/ Comments</b>
City of Los Angeles (LA)	Master Cooperative Agreement	N/A	N/A	Parties will work under 2003 MCA.
City of Beverly Hills (BH)	Memorandum of Agreement (La Cienega only)	9/14 (AUR) 02/17 (D/B)	9/14 (AUR) 1/17 (D/B)	City of Beverly Hills approved the MOA for the C1056 Wilshire/La Cienega AUR contract on August 19, 2014. City Council approved the MOA for the C1045 Design/Build contract on February 21, 2017. Required Need Date reflects the early contractual turnover date to C1045 contractor for all areas at Wilshire/La Cienega.
Los Angeles Department of Water and Power	Master Cooperative Agreement	N/A	N/A	Metro and LADWP will continue to work under the terms of the previous MCA.
Los Angeles County Public Works	Master Cooperative Agreement	4/11	3/12	Executed
Caltrans	Master Cooperative Agreement	8/11	3/12	Executed
Private Utilities	Utility Cooperative Agreement	9/14	N/A	Metro is working with affected third party utilities under existing agreements except for Qwest/Century Link and Level 3. Draft agreements for Qwest/Century Link and Level 3, and a new agreement for SCE are all under review. In absence of an agreement, work is being performed via work orders.

**ADVANCED UTILITY RELOCATION STATUS**

- All advanced utility relocations by third parties have been completed.

## **PEAK HOUR AND NIGHTTIME CONSTRUCTION VARIANCES**

Metro is actively pursuing extended hour variances/exemptions to accommodate the Project needs. Metro staff is working with the City of Los Angeles Bureau of Engineering and the Los Angeles Police Commission to obtain Peak Hour Exemptions and Nighttime Construction Variances. Current efforts center around extending the existing nighttime noise variances to accommodate utility relocations at the Wilshire/La Brea and Wilshire/Fairfax Station sites, as well as obtaining new nighttime noise variances and peak hour exemptions to allow night work and weekend work to accommodate the Wilshire/La Brea, Wilshire/Fairfax and Wilshire/Western piling operations for the Design/Build contractor.

- A Peak Hour Exemption for the center muck shaft at Wilshire/La Brea Station was approved by the City of Los Angeles for the dates of December 4, 2017 through March 30, 2018. An extension has been granted by the City through October 31, 2018.
- The Nighttime Noise Variances for the five yard locations in the City of Los Angeles (North La Brea, South La Brea, Fairfax, Western and Crenshaw) have been extended to July 15, 2018 by the Los Angeles Police Commission.
- The Nighttime Noise Variance for excavation and deliveries at Wilshire/La Brea Station has been extended to July 30, 2018 by the Los Angeles Police Commission.
- The Nighttime Noise Variance for piling operations and jet grouting at the Wilshire/Western TBM Retrieval Shaft has been extended to August 11, 2018 by the Los Angeles Police Commission.
- *The Nighttime Noise Variance for decking and excavation at the Wilshire/Western TBM Retrieval Shaft has been extended to October 30, 2018 by the Los Angeles Police Commission.*
- A Nighttime Noise Variance for jet grouting operations at Cross Passages 23, 24 and 25 has been approved for the dates of March 3, 2018 through June 30, 2018.
- A Peak Hour Exemption for the jet grouting operations at Cross Passages 23, 24 and 25 has been approved by the City of Los Angeles for the dates of March 9, 2018 through June 29, 2018.
- *A Nighttime Noise Variance for concrete work at the Division 20 Parts Storage Facility (320 S. Santa Fe) has been approved for the dates of February 5, 2018 through October 7, 2018.*
- *A Nighttime Noise Variance for concrete work at the Division 20 MOW site has been approved for the dates of March 17, 2018 through September 17, 2018.*

## **CHRONOLOGY OF EVENTS**

June 2007	Began Alternatives Analysis study
January 2009	Board approval of Alternatives Analysis study and next phase
February 2009	Began Draft Environmental Impact Statement / Report (EIS / EIR)
October 2010	Board approval of Draft EIS / EIR and selection of locally preferred alternative
January 2011	FTA approval to enter Preliminary Engineering
May 2011	Began Preliminary Engineering
April 2012	Board certification of Final EIS / EIR and adoption of project
July 2012	Completion of Exploratory Shaft final design
August 2012	FTA Record of Decision
September 2012	Began Real Estate Acquisition
November 2012	Began Final Design - C1048 - Advanced Utility Relocations contract – Wilshire/La Brea
November 2012	Began Final Design - C1055 - Advanced Utility Relocations contract – Wilshire/Fairfax
November 2012	Issued RFQ for C1045 Design / Build contract
December 2012	Began Final Design - C1056 - Advanced Utility Relocations contract – Wilshire/La Cienega
January 2013	Began C1034 Exploratory Shaft construction
February 2013	Received RFQ responses for C1045 Design / Build contract
June 2013	Issued RFP for C1045 Tunnels, Stations, Trackwork, Systems and Systems Integration Testing
June 2013	Beginning of C1055 AUR Wilshire/Fairfax Bid Period
July 2013	Submitted draft FFGA application
July 2013	Completed Final Design - C1048 - Advanced Utility Relocations contract – Wilshire/La Brea

**CHRONOLOGY OF EVENTS (Continued)**

July 2013	Submitted TIFIA loan application
August 2013	Began C1048 Advanced Utility Relocations contract – Wilshire/La Brea
August 2013	NTP for Construction Management Support Services Contract
January 2014	Submitted application to FTA requesting an FFGA
January 2014	Received RFP Proposals for Contract C1045
February 2014	Beginning of C1056 AUR Wilshire/La Cienega Bid Period
May 2014	FTA awarded FFGA
May 2014	Received TIFIA Loan
June 2014	Began C1055 Advanced Utility Relocations at Wilshire/Fairfax
July 2014	Metro Board approved staff recommendation to award Contract C1045 and approved Life-of-Project Budget
September 2014	Issued Invitation to Bid for Contract C1078
October 2014	Issued C1056 Contract Award
November 2014	Issued C1045 Contract Award
January 2015	Issued C1045 Contract Notice to Proceed
January 2015	Issued C1056 Contract Notice to Proceed
February 2015	Received Contract C1078 Bids
August 2015	Issued C1078 Contract Award
September 2015	Issued C1078 Contract Notice to Proceed
October 2015	Contract C1055 achieved Substantial Completion
December 2015	Began piling operations for Wilshire/La Brea Station
June 2016	Began deck beam and decking operations for Wilshire/La Brea Station
August 2016	Began piling operations for Wilshire/Fairfax Station
August 2016	Contract C1056 achieved Substantial Completion

**CHRONOLOGY OF EVENTS (Continued)**

February 2017	Began deck beam and decking operations for Wilshire/Fairfax Station
March 2017	Began piling operations for Wilshire/La Cienega Station
June 2017	Decking operations for Wilshire/Fairfax Station are complete
September 2017	Began utility relocation work at the Wilshire/Western site
October 2017	Began street decking for Wilshire/La Cienega Station
November 2017	Began concreting activities for Wilshire/La Brea Station
December 2017	Structural steel erection commenced at the Division 20 Maintenance-of-Way and Non-revenue Vehicle Building Location 64
January 2018	Decking operations for Wilshire/La Cienega Station are complete
February 2018	Began invert slab concrete placement at the Wilshire/La Brea Station
April 2018	Wilshire/Fairfax Station excavation cleared the Paleo Zone (Elevation 105')

**CONTRACT C1045 STATUS**

<p><b>Description:</b> Westside Purple Line Extension Design-Build <b>Contractor:</b> SKANSKA - TRAYLOR - SHEA</p>	<p><b>Contract No. C1045</b> <b>Status as of: June 1, 2018</b></p>															
<p><b>Progress / Work Completed:</b> - Wilshire/La Brea Station Level D struts removed (GL 1-27) - Wilshire/Fairfax Station Level C strut installation complete - Tunnel Reach 3 - Jet Grouting Cross Passage 23 complete</p> <p><b>Areas of Concern:</b> None</p>	<p><b>Major Activities (In Progress):</b> - Wilshire/Western Retrieval Shaft excavation/bracing - Wilshire/La Brea Station conveyor installation - Wilshire/La Brea Station HDPE and rebar installation - Wilshire/Fairfax excavation continues - Wilshire/Fairfax strut and waler installation - Wilshire/La Cienega Station excavation - Wilshire/La Cienega Station hanging of utilities - Tunnel instrumentation installation along Reach 1</p> <p><b>Major Activities Next Period:</b> - Wilshire/Western Retrieval Shaft excavation/bracing continue - Wilshire/La Brea Station wall concrete pours continue - Wilshire/Fairfax Station excavation/strut installation continues - Wilshire/La Cienega excavation continues</p>															
<p><b>Schedule Summary:</b></p> <p>Date of Award: 11/04/14 Notice to Proceed: 01/12/15 Original Contract Duration: 3250 CD Current Contract Duration: 3250 CD Elapsed Time from NTP: 1236 CD</p>		Original Contract Dates	Time Extension	Current Contract	Forecast	Variance CDs										
	Notice to Proceed (Estimated)	01/12/15	0	01/12/15	01/12/15	0										
	Milestone 1: Substantial Completion	06/09/23	0	06/09/23	06/09/23	0										
	Milestone 2: Stations available to UFS	10/07/22	0	10/07/22	10/07/22	0										
	Milestone 3: Start of Integration Testing to ROC	01/10/23	0	01/10/23	01/10/23	0										
	Milestone 4: Demobilization	12/06/23	0	12/06/23	12/06/23	0										
	Milestone 5: Temporary Construction Easements	01/10/23	0	01/10/23	01/10/23	0										
<p><b>Physical Percent Complete:</b></p> <p>Physical completion: 34.36%*</p> <p>* Note: Physical completion assessment reflects work completed and work in progress.</p>	<p><b>Cost Summary: \$ In millions</b></p> <table border="0"> <tr> <td>1. Award Value:</td> <td>1,636.4</td> </tr> <tr> <td>2. Executed Modifications:</td> <td>19.5</td> </tr> <tr> <td>3. Approved Change Orders:</td> <td>0.0</td> </tr> <tr> <td>4. Current Contract Value (1+2+3):</td> <td>1,655.9</td> </tr> <tr> <td>5. Incurred Cost:</td> <td>755.4</td> </tr> </table>						1. Award Value:	1,636.4	2. Executed Modifications:	19.5	3. Approved Change Orders:	0.0	4. Current Contract Value (1+2+3):	1,655.9	5. Incurred Cost:	755.4
1. Award Value:	1,636.4															
2. Executed Modifications:	19.5															
3. Approved Change Orders:	0.0															
4. Current Contract Value (1+2+3):	1,655.9															
5. Incurred Cost:	755.4															

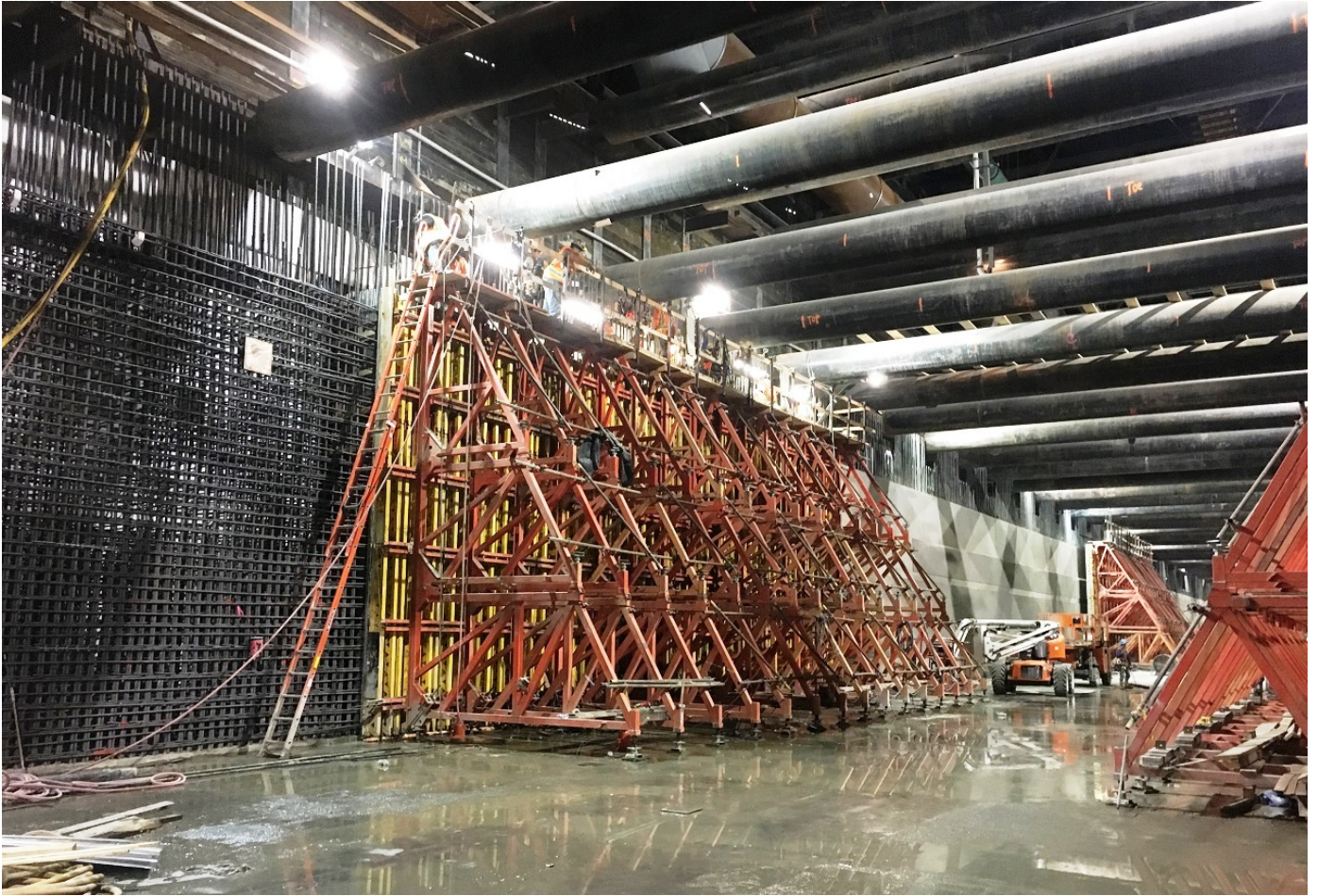
**CONTRACT C1078 STATUS**

<p><b>Description: Building Location 64 (MOW/NRV)</b> <b>Contractor: Clark Construction</b></p>	<p><b>Contract No. C1078</b> <b>Status as of: June 1, 2018</b></p>																													
<p><b>Progress / Work Completed:</b></p> <ul style="list-style-type: none"> <li>- Div 20 Building - Above Grade Structure complete</li> <li>- Div 20 Building - Slab on Grade pours complete</li> <li>- Div 20 Building - Communication Room work has commenced</li> <li>- Div 20 Building - Work on the building envelope has commenced</li> </ul> <p><b>Areas of Concern:</b></p> <ul style="list-style-type: none"> <li>- Access to C1045 Contractor of December 17, 2019 continues to be monitored and tracked. No impact at this time</li> </ul>	<p><b>Major Activities (In Progress):</b></p> <ul style="list-style-type: none"> <li>- Design Unit #3 (Systems Comm) finalizing design</li> <li>- Div 20 Building - Work on the Building envelope</li> <li>- Div 20 Building - Interior rough-in and framing</li> <li>- Div 20 Building - Work on electrical and communication rooms</li> <li>- Div 20 Building - Sitework (Electrical Yard)</li> <li>- Div 20 Parts &amp; Storage Area - Foundation Work</li> </ul> <p><b>Major Activities Next Period:</b></p> <ul style="list-style-type: none"> <li>- Design Unit #3 (Systems Comm) finalizing design</li> <li>- Div 20 Building - Work on the Building envelope (Precast Panels)</li> <li>- Div 20 Building - Interior rough-in and framing</li> <li>- Div 20 Building - Start of Precast Panel installation</li> <li>- Div 20 Parts &amp; Storage Area - Complete Foundation Work</li> </ul>																													
<p><b>Schedule Summary:</b></p> <p>Date of Award: 08/03/15</p> <p>Notice to Proceed: 09/30/15</p> <p>Original Contract Duration: 853 CD</p> <p>Current Contract Duration: 43,553 CD</p> <p>Elapsed Time from NTP: 975 CD</p>	<table border="1"> <thead> <tr> <th></th> <th>Original Contract Dates</th> <th>Time Extension</th> <th>Current Contract</th> <th>Forecast</th> <th>Variance CDs</th> </tr> </thead> <tbody> <tr> <td>Notice to Proceed (Estimated)</td> <td>09/30/15</td> <td>0</td> <td>09/30/15</td> <td>09/30/15</td> <td>0</td> </tr> <tr> <td>Milestone 1: Substantial Completion</td> <td>01/30/18</td> <td>423</td> <td>03/29/19</td> <td>03/29/19</td> <td>0</td> </tr> <tr> <td></td> <td></td> <td></td> <td></td> <td></td> <td></td> </tr> </tbody> </table>							Original Contract Dates	Time Extension	Current Contract	Forecast	Variance CDs	Notice to Proceed (Estimated)	09/30/15	0	09/30/15	09/30/15	0	Milestone 1: Substantial Completion	01/30/18	423	03/29/19	03/29/19	0						
	Original Contract Dates	Time Extension	Current Contract	Forecast	Variance CDs																									
Notice to Proceed (Estimated)	09/30/15	0	09/30/15	09/30/15	0																									
Milestone 1: Substantial Completion	01/30/18	423	03/29/19	03/29/19	0																									
<p><b>Physical Percent Complete:</b></p> <p>Physical completion: 46.54%*</p> <p><i>* Note: Physical completion assessment reflects work completed and work in progress.</i></p>	<p><b>Cost Summary: \$ In millions</b></p> <table> <tr> <td>1. Award Value:</td> <td>52.8</td> </tr> <tr> <td>2. Executed Modifications:</td> <td>11.0</td> </tr> <tr> <td>3. Approved Change Orders:</td> <td>1.1</td> </tr> <tr> <td>4. Current Contract Value (1+2+3):</td> <td>64.9</td> </tr> <tr> <td>5. Incurred Cost:</td> <td>35.2</td> </tr> </table>						1. Award Value:	52.8	2. Executed Modifications:	11.0	3. Approved Change Orders:	1.1	4. Current Contract Value (1+2+3):	64.9	5. Incurred Cost:	35.2														
1. Award Value:	52.8																													
2. Executed Modifications:	11.0																													
3. Approved Change Orders:	1.1																													
4. Current Contract Value (1+2+3):	64.9																													
5. Incurred Cost:	35.2																													

## CONSTRUCTION PHOTOGRAPHS



*TBM Cradle at Wilshire/La Brea Station*



*Concrete Wall Pours at Wilshire/La Brea Station*

**APPENDIX  
COST AND BUDGET TERMINOLOGY**

**Project Cost Descriptions**

ORIGINAL BUDGET	The Original Project Budget as authorized by the Metropolitan Transportation Authority (Metro) Board.
CURRENT BUDGET	The Original Budget plus all budget amendments approved by formal Metro Board action. Also referred to as Approved Budget.
COMMITMENTS	The total of actual contracts awarded, executed change orders or amendments, and approved work orders of Master Cooperative Agreements, offers accepted for purchase of real estate, and other Metro actions which have been spent or result in the obligation of specific expenditures at a future time.
EXPENDITURES	The total dollar amount of funds expended by Metro for contractor or consultant services, third party services, staff salaries, real estate and other expenses that is reported in Metro's Financial Information System (FIS).
CURRENT FORECAST	The best estimate of the final cost of the Project when all checks have been issued and the Project is closed out. Current Forecast is composed of actual costs incurred to date, the best estimate of work remaining and a current risk assessment for each budgeted cost item.

**Cost Report by Element Descriptions**

CONSTRUCTION	Includes construction contracts. Cost associated with Guideways, Stations, Southwestern Yard, Sitework/Special Conditions and Systems.
RIGHT-OF-WAY	Includes purchase cost of parcels, easements, right-of-entry permits, escrow fees, contracted real estate appraisals and tenant relocation.
VEHICLES	Includes the purchase of Heavy Rail Vehicles and spare parts for the Project.
PROFESSIONAL SERVICES	Includes design engineering, project management assistance, construction management support services, legal counsel, agency staff costs, and other specialty consultants.
CONTINGENCY	A fund established at the beginning of a project to provide for anticipated but unknown additional costs that may arise during the course of the Project.
PROJECT REVENUE	Includes all revenue received by Metro as a direct result of project activities. This includes cost sharing construction items, insurance premium rebates, and the like.

## **APPENDIX**

### **LIST OF ACRONYMS AND ABBREVIATIONS**

ATC	Automatic Train Control
ATSAC	Automated Traffic Surveillance and Control
BAFO	Best and Final Offer
BIM	Building Information Modeling
BNSF	Burlington Northern Santa Fe Railway Company
BRT	Bus Rapid Transit
CADD	Computer Aided Drafting and Design
CALTRANS	California Department of Transportation
CCTV	Closed Circuit Television
CD	Calendar Day
CEQA	California Environmental Quality Act
CM	Construction Manager
CMAQ	Congestion Mitigation and Air Quality Improvement Program
CMSSC	Construction Management Support Services Consultant
CN	Change Notice
CO	Change Order
COBH	City of Beverly Hills
COLA	City of Los Angeles
CPM	Critical Path Method
CPUC	California Public Utilities Commission
CR	Camera Ready
CRMMP	Cultural Resource Monitoring and Mitigation Plan
CSPP	Construction Safety Phasing Plan
CTC	California Transportation Commission
CUD	Contract Unit Description
DB	Design Build
DBB	Design Bid Build
DOT	Department of Transportation
DWP	Department of Water and Power
EIR	Environmental Impact Report
EIS	Environmental Impact Statement
EMS	Engineering Management Services
EPBM	Earth Pressure Balance Machine
FAA	Federal Aviation Administration
FAR	Federal Acquisition Regulation
FD	Final Design
FEIS	Final Environmental Impact Statement
FEIR	Final Environmental Impact Report
FIS	Financial Information System
FLSR	Fire Life Safety Report
FONSI	Finding of No Significant Impact
FRA	Federal Railroad Administration
FSEIR	Final Supplemental Environmental Impact Report
FSEIS	Final Supplemental Environmental Impact Statement

**APPENDIX**

**LIST OF ACRONYMS AND ABBREVIATIONS (Continued)**

FTA	Federal Transit Administration
FTE	Full Time Equivalent
GBR	Geotechnical Baseline Report
GDSR	Geotechnical Design Summary Report
HMM	Hatch Mott MacDonald
HRT	Heavy Rail Transit
HRV	Heavy Rail Vehicle
IFB	Invitation for Bid
IPMO	Integrated Project Management Office
JV	Joint-Venture
LA	Los Angeles
LABOE	Los Angeles Bureau of Engineering
LABOS	Los Angeles Bureau of Sanitation
LABSL	Los Angeles Bureau of Street Lighting
LACFCD	Los Angeles County Flood Control District
LACMTA	Los Angeles County Metropolitan Transportation Authority
LADOT	Los Angeles Department of Transportation
LADPW	Los Angeles Department of Public Works
LADWP	Los Angeles Department of Water and Power
LAUSD	Los Angeles Unified School District
LAWA	Los Angeles World Airports
LAX	Los Angeles International Airport
LNTP	Limited Notice To Proceed
LONP	Letter Of No Prejudice
LOP	Life-of-Project
LPA	Locally Preferred Alternative
LRTP	Long Range Transportation Plan
LRV	Light Rail Vehicle
MCA	Master Cooperative Agreement
MIS	Major Investment Study
MMRP	Mitigation Monitoring and Reporting Plan
MOU	Memorandum of Understanding
MPSR	Monthly Project Status Report
N/A	Not Applicable
NEPA	National Environmental Protection Act
NOD	Notice of Determination
NPDES	National Pollution Discharge Elimination System
NTE	Not to Exceed
NTP	Notice To Proceed
OCC	Operations Control Center
OSHA	Occupational Health and Safety Administration
PA/VMS	Public Address/Visual Messaging Sign
PE	Preliminary Engineering

**APPENDIX**

**LIST OF ACRONYMS AND ABBREVIATIONS (Continued)**

PEER	Permit Engineering Evaluation Report
PIP	Project Implementation Plan
PLA	Project Labor Agreement
PM	Project Manager
PMIP	Project Management Implementation Plan
PMOC	Project Management Oversight Consultant
PMP	Project Management Plan
P&P	Policies & Procedures
PR	Project Report
PRMMP	Paleontological Resource Monitoring Mitigation Plan
PSR	Project Study Report
QA	Quality Assurance
QAR	Quality Assurance Report
QC	Quality Control
QPSR	Quarterly Project Status Report
QTIB	Qualified Transit Improvement Bonds
RAMP	Real Estate Acquisition Management Plan
RCHAR	Rail Crossing Hazards Analysis Report
RCMP	Risk Assessment Management Plan
RFC	Request For Change
RFP	Request For Proposals
RFSC	Request For Special Consideration
RHA	Risk Hazard Analysis
RLPE	Red Light Photo Enforcement
ROC	Rail Operations Center
ROD	Record Of Decision
ROM	Rough Order of Magnitude
ROW	Right-Of-Way
RPZ	Runway Protection Zone
RSD	Revenue Service Date
SAV	Stand Alone Validator
SBCC	<i>Steve Bubalo Construction Co</i>
SCAQMD	Southern California Air Quality Management District
SCADA	Supervisory Control and Data Acquisition
SCC	Standard Cost Category
SCE	Southern California Edison
SCG	Southern California Gas Company
SCRRA	Southern California Regional Rail Authority
SHA	State Highway Account
SHPO	State Historic Preservation Office
SIT	System Integration Testing
SOE	Support of Excavation
SOQ	Statement of Qualification
SOV	Schedule Of Value
SOW	Statement Of Work

**APPENDIX**

**LIST OF ACRONYMS AND ABBREVIATIONS (Continued)**

SP	Special Provision
SSMP	Safety and Security Management Plan
STB	Surface Transportation Board
STIP	State Transportation Improvement Program
STP	Surface Transportation Program
STV	STV Group
SWPPP	Storm Water Pollution Prevention Plan
TBD	To Be Determined
TBM	Tunnel Boring Machine
TCE	Temporary Construction Easement
TCRP	Traffic Congestion Relief Program
TIFIA	Transportation Infrastructure Finance and Innovation Act
TIGER	Transportation Investment Generating Economic Recovery
TPSS	Traction Power Substation
TRACS	Transit Automatic Control System
TVA	Threat Vulnerability Analysis
TVM	Ticket Vending Machine
UFS	Universal Fare System
USDOT	United States Department Of Transportation
VE	Value Engineering
WBS	Work Breakdown Structure
WP	Work Package
YOE	Year of Expenditure