
Metro Gold Line

Foothill Extension Project

Monthly Project Status Report

September 2015





TABLE OF CONTENTS

PHASE 2 FOOTHILL EXTENSION PROJECT STATUS

| | |
|---|-----------|
| Project Description | 3 |
| Pasadena to Azusa Segment | 4 |
| Management Issues | 4 |
| Key Activities Completed This Period | 5 |
| Key Future Activities | 6 |
| Critical Path Schedule | 7 |
| Critical Path Float Trend | 8 |
| Alignment Contract Status | 9 |
| Alignment Construction Progress This Period | 11 |
| Facility Construction Progress This Period | 12 |
| Alignment Construction Progress Next Period | 13 |
| Facility Construction Progress Next Period | 14 |
| Alignment Construction Images | 15 |
| Alignment Change Management Log | 17 |
| Parking Facilities and Enhancements Contract Status | 22 |
| Parking Facilities and Enhancements Construction Images | 24 |
| Parking Facilities and Enhancements Change Management Log | 26 |
| Azusa to Montclair Segment | 28 |
| Financial Status | 29 |



FOOTHILL EXTENSION PROJECT DESCRIPTION

The Authority's mandate is to plan, design and construct a 37-mile light rail link between Downtown Los Angeles and Claremont. In addition, the San Bernardino Associated Governments (SANBAG) has requested that planning be extended one mile inside San Bernardino County to the City of Montclair and then possibly to Ontario Airport.

The Metro Gold Line Phase 2 (Foothill Extension) corridor includes the cities of Pasadena, Arcadia, Monrovia, Duarte, Irwindale, Azusa, Glendora, San Dimas, La Verne, Pomona, Claremont, and Montclair; and the counties of Los Angeles and San Bernardino (Figure 1). The Foothill Extension is estimated to cost approximately \$1.950 billion.

The Foothill Extension will be built in two segments to align effectively with projected cash flows and financial capacity constraints. The first segment is defined from the Sierra Madre Villa Station in Pasadena to the city of Azusa. Revenue service along this segment is planned for the year 2016. The second segment would include an extension from Azusa to the City of Montclair with revenue service projected for the year 2023.

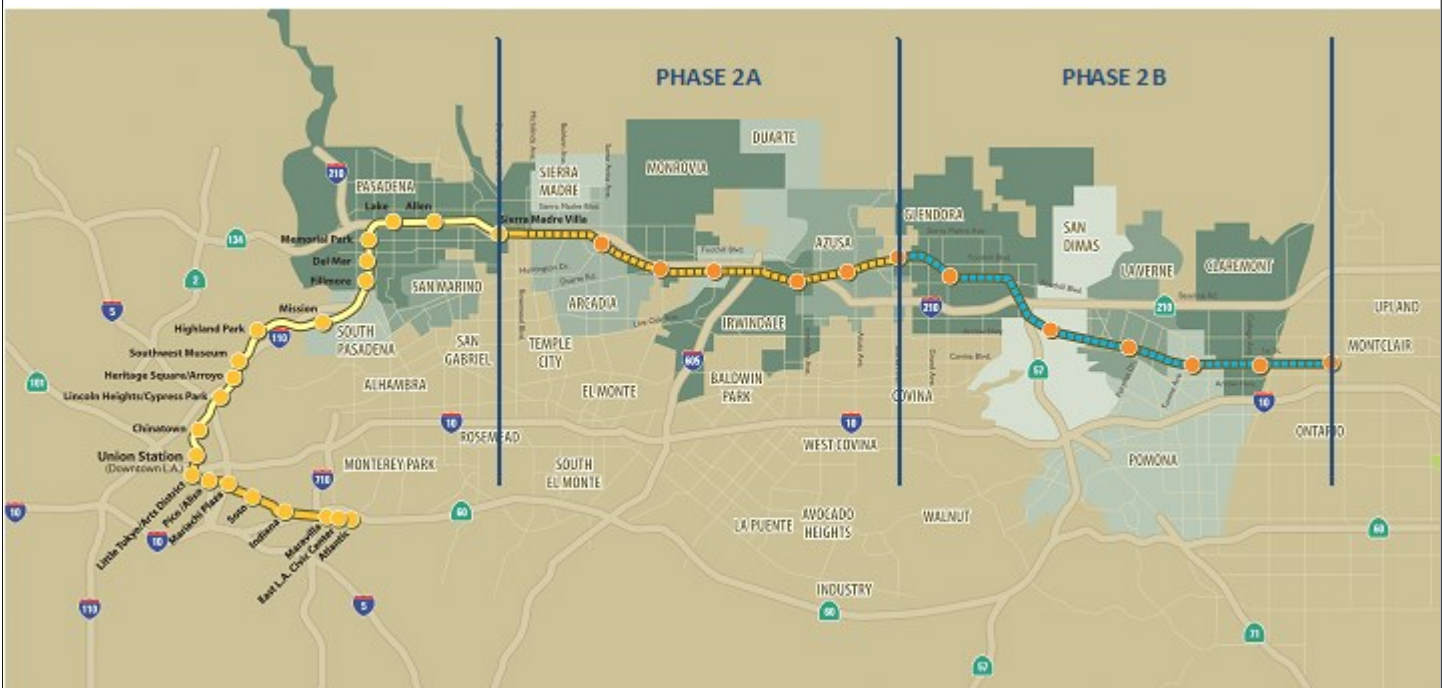


Figure 1: Metro Gold Line Foothill Extension Alignment



Pasadena to Azusa Segment

MANAGEMENT ISSUES

Metro Betterments

During the design process Metro staff have identified betterments that Metro staff would like to add to the project. Metro has provided a final disposition on all but a few items. Authority staff continues to work with Metro staff to resolve the remaining items.



KEY ACTIVITIES COMPLETED THIS PERIOD

FTC reports the following SBE statistics for the month of June:

- Target SBE commitment: \$59,500,000
- SBE percent committed versus value of Project: 18.86%
- Overall Authority Project SBE goal: 12.25%

FTC reports the following approximate safety statistics to date:

- 2,215,465 total work hours performed by FTC, Mass Electric, and Subcontractors
- 14 recordable injuries reported to date
- 4 lost time injuries reported to date

Webcor reports the following DBE statistics for the month of June:

- Target DBE commitment: \$1,121,250
- DBE percent committed versus value of Project: 4.65%
- Overall Authority Project DBE goal: 2.3%

Webcor reports the following approximate safety statistics to date:

- 215,003 total work hours performed by Webcor and Subcontractors
- 1 recordable injuries reported to date
- 0 lost time injuries reported to date

Completed placement of art and architectural elements at all stations

Completed holding all station dedication events

Completed systems integration testing

Completed Communications Local Field Acceptance Testing (LFAT) throughout alignment

Achieved Substantial Completion for the Phase 2A Alignment Contract (C1135) on September 23rd

Turned project over to Metro

Continued performing punch list walks with Metro along the Alignment

Continued addressing punch list items at all parking facilities

Completed elevator inspections at parking structure elevators and obtained state certifications



KEY FUTURE ACTIVITIES

Continue discussions with corridor cities regarding the project

Continue management of the Alignment contract, which will include oversight of Punch List, Final Acceptance and start-up activities

Continue to meet with Intermodal Parking Facilities and Enhancements Project contractor, Webcor Builders regarding punch list and Final Acceptance

Finalize the following property acquisitions:

- Arcadia:

1. Parcel 1310/1311 (Indiana St.) – To be vacated by the City of Arcadia.
2. Parcel 1401a (Huntington Dr. Aerial Easement) – To be conveyed by the City of Arcadia.
3. Parcel 1401b (Huntington Dr. Bridge Abutments) – To be conveyed by the City of Arcadia.
4. Parcel 6009 (Huntington Dr. Bridge Abutments) – To be conveyed by the City of Arcadia.
5. Parcel 6010 (Huntington Dr. Bridge Abutments) – To be conveyed by the City of Arcadia.
6. Parcel 6011 (Huntington Dr. Bridge Abutments) – To be conveyed by the City of Arcadia.

- Monrovia:

1. Parcel 1601 (Encino Av.) – To be conveyed by the City of Monrovia.
2. Parcel 1903 (Monrovia Station) – To be conveyed by the City of Monrovia.
3. Parcel 21A12 (3M Parking Lot) – Land swap.
4. Parcel 21A21 (North Duarte Road vacated by City of Monrovia) – Held in Fee Title by the City of Monrovia. Needs to be conveyed to the Authority.
5. Parcel 21A22 (Shamrock Street vacated by City of Monrovia) - Held in Fee Title by 3M. Needs to be conveyed to the Authority.
6. Parcel 21A23 (Shamrock Trapezoid vacated by City of Monrovia) – Held in Fee Title by the City of Monrovia. Needs to be conveyed to the Authority.

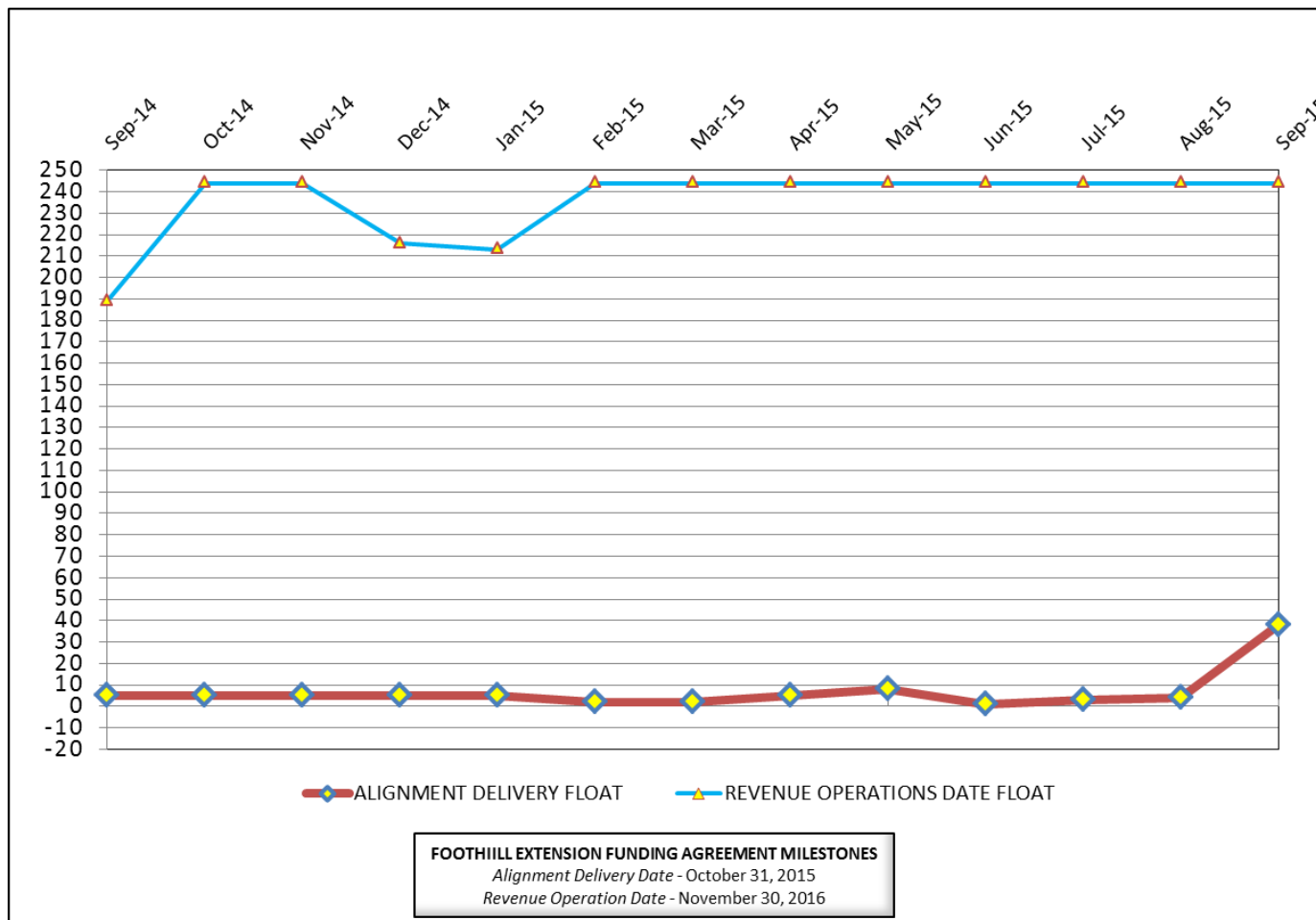


CRITICAL PATH SCHEDULE

| Activity Name | OD | RO | AD | Start | Finish | Total Float | Timeline | | | | | | | | | | | | | | | |
|--|------|----|------|----------------------|----------------------|-------------|-------------------------------------|----|----|------|----|----|------|----|----|------|----|----|------|----|----|----|
| | | | | | | | 2012 | | | 2013 | | | 2014 | | | 2015 | | | 2016 | | | |
| | | | | | | | Q2 | Q3 | Q4 | Q1 | Q2 | Q3 | Q4 | Q1 | Q2 | Q3 | Q4 | Q1 | Q2 | Q3 | Q4 | Q1 |
| REVENUE OPERATIONS DATE - CRITICAL PATH | | | | | | | | | | | | | | | | | | | | | | |
| RFP - LRV PROCUREMENT | 375 | 0 | 557 | 18.Oct.10 08:00 A | 26.Apr.12 15:00 A | | [Gantt bar from Q2 2012 to Q4 2012] | | | | | | | | | | | | | | | |
| LRV FABRICATION / DELIVER 15 VEHICLES | 1353 | 95 | 1124 | 17.Aug.12 07:00 A | 18.Dec.15 15:00 | 244 | [Gantt bar from Q3 2012 to Q4 2015] | | | | | | | | | | | | | | | |
| METRO - Pre-Revenue Operations - Phase 2A | 60 | 60 | 0 | 19.Dec.15 07:00 | 16.Feb.16 15:00 | 244 | [Gantt bar from Q4 2015 to Q1 2016] | | | | | | | | | | | | | | | |
| METRO - Project Schedule Contingency (2 Mo.) | 44 | 44 | 0 | 17.Feb.16 07:00 | 31.Mar.16 15:00 | 244 | [Gantt bar from Q1 2016 to Q2 2016] | | | | | | | | | | | | | | | |
| Phase 2A - Revenue Operations Date (ROD) | 0 | 0 | 0 | | 31.Mar.16 15:00* | 244 | [Gantt bar from Q1 2016 to Q1 2016] | | | | | | | | | | | | | | | |
| ALIGNMENT DELIVERY DATE - CRITICAL PATH | | | | | | | | | | | | | | | | | | | | | | |
| SYSTEMS INTERGRATION TESTING - PHASE 1 | 185 | 7 | 200 | 09.Dec.14 07:00 A | 23.Sep.15 15:00 | 27 | [Gantt bar from Q4 2014 to Q3 2015] | | | | | | | | | | | | | | | |
| DUARTE PARKING LOT - COMMUNICATIONS INSTL / TEST | 22 | 4 | 31 | 03.Aug.15 07:00 A | 18.Sep.15 15:00 | 29 | [Gantt bar from Q3 2015 to Q4 2015] | | | | | | | | | | | | | | | |
| SYSTEMS INTERGRATION TESTING - PHASE 2 | 35 | 30 | 21 | 17.Aug.15 07:00 A | 26.Oct.15 15:00 | 191 | [Gantt bar from Q4 2015 to Q2 2016] | | | | | | | | | | | | | | | |
| C1135 - >>>SUBSTANTIAL COMPLETION - 1420 CD<<< | 0 | 0 | 0 | | 23.Sep.15 15:00* | 38 | [Gantt bar from Q3 2015 to Q3 2015] | | | | | | | | | | | | | | | |
| ALIGNMENT DELIVERY DATE - SECONDARY - CRITICAL PATH | | | | | | | | | | | | | | | | | | | | | | |
| IRWINDALE STATION - COMMUNICATIONS INSTL / TEST | 60 | 4 | 111 | 13.Apr.15 07:00 A | 18.Sep.15 15:00 | 29 | [Gantt bar from Q2 2015 to Q4 2015] | | | | | | | | | | | | | | | |



CRITICAL PATH FLOAT TREND



Revenue Operations Date Critical Path - (244 Calendar Days)

The critical path is currently running through the P3010 LRV procurement. At this time, Metro is forecasting the delivery of the 15th vehicle by December 2015. The critical path continues through Pre-Revenue Operations, which is expected to be completed by February 16, 2016. The Revenue Operations Date (ROD) is projected to be complete by March 31, 2016, which is eight (8) months ahead of the Funding Agreement Milestone date of November 30, 2016.

Alignment Delivery Date Critical Path - (38 Calendar Days)

This period, the Duarte Parking Lot communications installation and testing remains on the critical path. Currently, the communications equipment installation at the parking lot is in progress, but Local Field Acceptance Testing (LFAT) is not expected to be complete until mid September 2015. Upon completion the Duarte Parking Lot communications LFAT, the critical path will continue through the SCADA Phase 1 Systems Integration Testing (SIT). Upon completion of the SCADA Phase 1 SIT, the Alignment will achieve Substantial Completion. Due to the Rail Operations Center upgrade progress, Phase 2 Systems Integration Testing will not be completed until after the upgrade is complete. Upon the conclusion of Phase 2 systems integration testing, the alignment will be available for Metro to complete Pre-Revenue Operations. The Irwindale Station communications LFAT is currently in progress and near critical.

Project Float

The project float for the Revenue Operations Date is 244 days. The critical activities on this path are on schedule to meet the Target Revenue Operations Date of November 2016. The Alignment Delivery Date float value is 38 days and is currently on schedule to meet the October 31, 2015 deadline.



Description: Alignment Design / Build

Status: September 15, 2015

Contract No.: C1135

Contractor: Foothill Transit Constructors (Kiewit-Parsons J.V.)

Cost Summary:

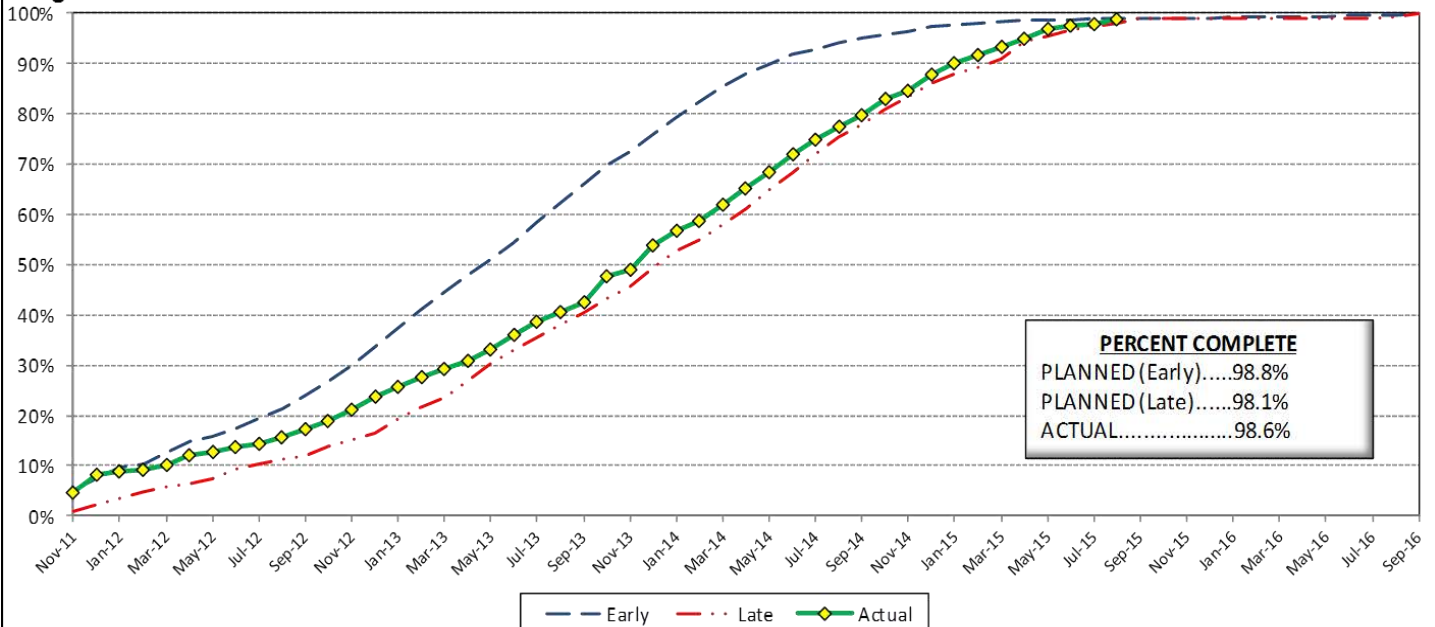
| | Million(s) |
|--------------------------------------|------------|
| CONTRACT | |
| Contract Award Value: | 485.9 |
| Executed Change Orders: | 23.3 |
| Current Contract Value: | 509.2 |
| Potential Change Orders: | 3.5 |
| Current Forecast: | 512.6 |
| Earned Value/Actual Cost | 494.6 |
| AUTHORIZATION FOR EXPENDITURE | |
| Budget | 514.5 |
| Commitment | 509.2 |
| Balance | 1.9 |

Cost Assessment:

This period the Contract forecast increased \$697 thousand. The major increase was due to the following: RFC114 - *Changes to M&O Landscaping*, PCO 113 - *Added Delineators at Grade Crossings*, PCO 112 - *M&O Fire Tank Punch List Items*, CO 172 - *Intersection Changes at Highland*, CO 173 - *Relocation of Buena Vista Pole D*, CO 174 - *TPSS Metering Pad Extension*.

The current forecast is within the authorized budget.

Progress Curve



Schedule Summary:

| | |
|-----------------------------------|---------------------|
| Contract Award: | 07/27/11 |
| Interim Notice to Proceed (NTP) : | 11/03/11 |
| Original Contract Duration: | 1,780 Calendar Days |
| Current Contract Duration: | 1,780 Calendar Days |
| Elapsed Time from NTP: | 1,412 Calendar Days |

Contract Milestones

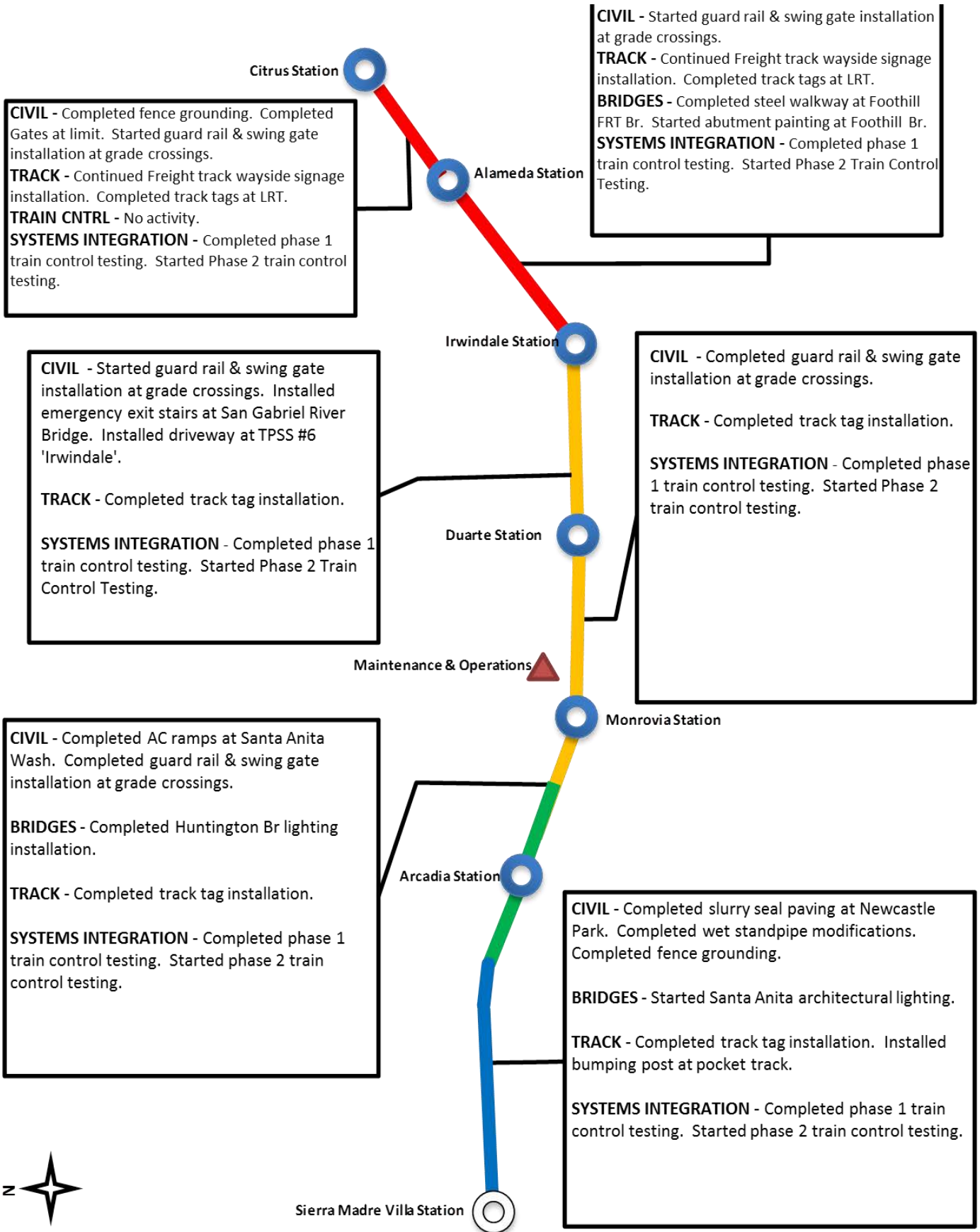
| Milestones | Description | Original Contract | Current Contract | Forecast | Variance |
|------------|----------------------------|-------------------|------------------|--------------|----------|
| 1 | Substantial Completion | 09/23/15 | 09/23/15 | 09/23/15 | 0 |
| 2 | Punchlist Complete | 06/19/16 | 06/19/16 | 06/19/16 | 0 |
| 3 | Final Completion | 09/17/16 | 09/17/16 | 09/17/16 | 0 |
| 4 | Access - IFS Br. | 12/15/12 | 12/15/12 | 12/15/2012 A | 0 |
| 5 | Test Track Complete | 03/27/15 | 03/27/15 | 3/27/2015 A | 0 |
| 6 | Colorado Br. Demo Complete | 02/01/12 | 02/01/12 | 6/15/2012 A | (135) |

Schedule Assessment:

The completion of the Duarte Parking Lot Communications and the Irwindale Station Communications LFAT testing are the critical elements to accomplish in order to proceed and complete the remainder of the Phase 1 Systems Integration Testing. Currently, The Design-Build Contractor is on schedule to complete the Phase 1 Systems Integration Testing by the Substantial Completion Deadline.



ALIGNMENT CONSTRUCTION PROGRESS THIS PERIOD





FACILITY CONSTRUCTION PROGRESS THIS PERIOD

Citrus Ave Station

STATION - Completed canopy lighting modifications. Completed ADA directional tiles. Completed Communications Phase 1 Systems Integration Testing.

PARKING - Completed elevator testing. Complete curb & gutter Citrus Ave. Completed communications LFAT testing. Completed Phase 1 Systems Integration Testing.

STATION - Completed artwork installation. Completed picket fence installation. Completed canopy lighting modifications. Completed ADA directional tiles. Completed Communications LFAT testing. Completed Communications Phase 1 Systems Integration Testing.

ENHANCEMENTS - Completed sidewalk transition at Santa Fe depot.

Alameda Station

STATION - Completed map case installations. Completed pedestrian crossing installation. Completed pylon installation. Completed steel picket fence. Continued Communications LFAT testing.

PARKING - Completed sidewalks & pedestrian lights at N. Irwindale Ave. Completed AC Paving & Crosswalk at Avenida Padilla. Completed art wall tile. Completed bike racks. Completed LFAT & Communications Phase 1 Systems Int. Test.

Irwindale Station

STATION - No activity.

PARKING - Completed communications installation. Started LFAT testing. Continued bus shelter at Highland Ave. and at Duarte Rd.

CIVIL - No activity

Duarte Station

STATION - Completed Phase 1 communications systems integration testing. Completed South Platform emergency access (Peck Rd.) Completed canopy lighting modifications. Completed grounding.

PARKING - No activity.

Maintenance & Operations

Monrovia Station

STATION - Completed Phase 1 communications systems integration testing. Completed canopy lighting modifications. Completed grounding.

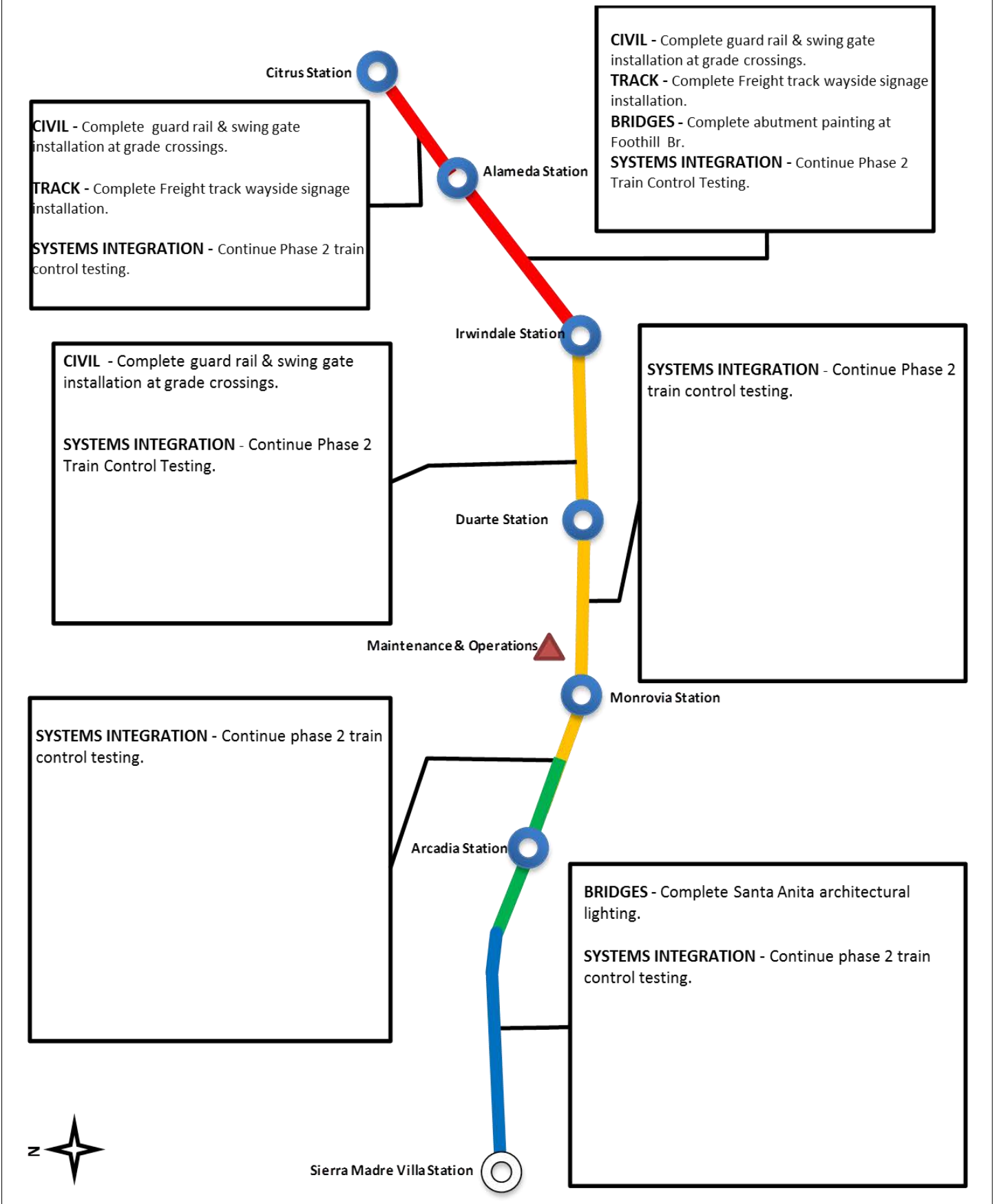
PARKING - Completed communications Phase 1 systems integration testing.

Arcadia Station





ALIGNMENT CONSTRUCTION PROGRESS NEXT PERIOD





FACILITY CONSTRUCTION PROGRESS NEXT PERIOD

Citrus Ave Station

STATION - Complete electrical grounding. Complete canopy gutters.

PARKING - Complete elevator state certification. Complete Citrus Ave roadway paving. Complete street light pole foundations.

STATION - Complete canopy gutters. Start platform ramp modifications. Complete replacement of metal benches.

ENHANCEMENTS - No activity.

Alameda Station

STATION - Complete landscaping. Complete replacement of metal benches. Complete LFAT & Phase 1 systems integration testing.

PARKING - Complete elevator state certification. Complete Communications Phase 1 Systems Int. Test.

Irwindale Station

STATION - Complete canopy gutters. Complete replacement of metal benches. Relocate CIC panel.

PARKING - Complete LFAT & Communications Phase 1 Systems Integration testing. Complete bus shelter pavers at Highland Ave. Complete bus shelter installation and pavers at Duarte Rd. Complete concrete paving re-work.

CIVIL - Complete storm drain and catch basin at Shamrock Ave. Complete Shamrock Ave paving.

Duarte Station

STATION - Complete canopy gutters. Complete replacement of metal benches.

PARKING - Complete elevator State Certification.

Maintenance & Operations

Monrovia Station

STATION - Complete canopy gutters. Complete replacement of metal benches.

PARKING - No activity.

Arcadia Station





ALIGNMENT CONSTRUCTION IMAGES

Project Substantial Completion Ceremony



Segment 2: Arcadia Station Overview

Segment 2: Monrovia Station
Dedication Ceremony



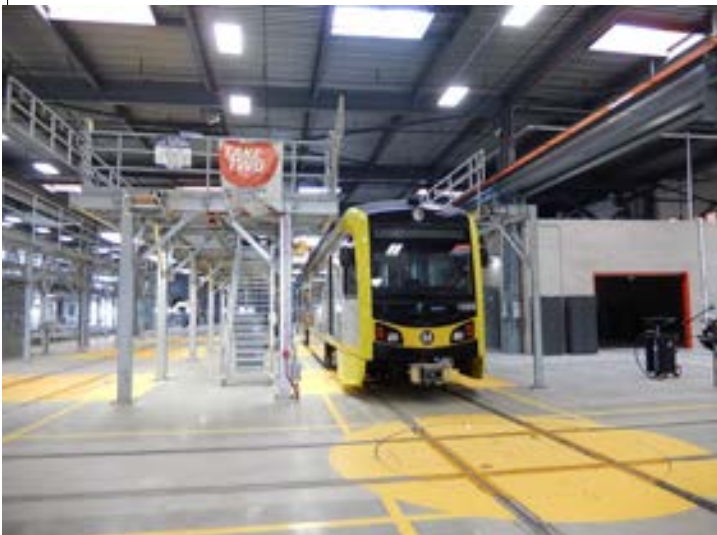


ALIGNMENT CONSTRUCTION IMAGES (CONTINUED)



Segment 3: Duarte Station Overview

Segment 4: Azusa-Alameda and Azusa-Citrus
Station Dedication Ceremony



LRV in Operations Campus
Service and Inspection Building



Change Management Log

Date: 10/9/2015

Page: 1 of 6

Project: C1135 Alignment - FTC Contract #: C1135

| | | | | | |
|---------------------------|---------------|-------|-------------------------|---------------|-------|
| Original Contract Amount: | \$485,867,000 | | | | |
| Approved Change Orders: | \$23,290,824 | 4.79% | Pending Change Orders: | \$0 | 0.00% |
| Current Contract Total: | \$509,157,824 | | Pending Contract Total: | \$509,157,824 | 4.79% |

Change Orders

| Number | Change Management | Title | Initiated Date | Approved Date | Outstanding Days | Time Extension | Amount |
|-------------------------------|-------------------|-------------------------------------|----------------|---------------|------------------|----------------|-------------|
| EXECUTED Change Orders | | | | | | | |
| 001.00 | 000.00 | Interim NTP | 11/3/2011 | 11/3/2011 | 0 | | \$0 |
| 002.00 | 013.00 | Colorado Bridge Haz Mat | 5/17/2012 | 5/18/2012 | 1 | | \$121,382 |
| 002.01 | 013.01 | Colorado Bridge HazMat - Final | 9/5/2012 | 9/7/2012 | 2 | | \$13,164 |
| 003.00 | 001.00 | Sound Wall Deletion - Duarte Road | 7/12/2012 | 7/18/2012 | 6 | | (\$74,707) |
| 004.00 | 018.00 | Revise Block Design - CBD Calc | 8/23/2012 | 8/29/2012 | 6 | | \$3,986 |
| 004.01 | 018.01 | Revise Block Design - CBD Calc - 2 | 9/5/2013 | 9/11/2013 | 6 | | \$0 |
| 005.00 | 023.00 | Wayside Signal Aspect Revision | 9/6/2012 | 9/7/2012 | 1 | | \$26,072 |
| 005.01 | 023.01 | Wayside Signal "Call On" Function | 10/30/2013 | 11/1/2013 | 2 | | \$75,169 |
| 006.00 | 040.00 | Arcadia Frieze, Bench-Artist Design | 9/6/2012 | 9/10/2012 | 4 | | \$13,683 |
| 006.01 | 040.01 | Arcadia Frieze, Bench-Construction | 3/7/2013 | 3/12/2013 | 5 | | \$155,894 |
| 007.00 | 019.02 | Soils Testing Abutments & Fdns | 9/14/2012 | 9/18/2012 | 4 | | \$44,993 |
| 008.00 | 041.00 | Unknown Utilities RFCN 005 006 008 | 9/14/2012 | 9/18/2012 | 4 | | \$132,450 |
| 009.00 | 038.00 | Illuminate City Names @ Stations | 9/18/2012 | 9/24/2012 | 6 | | \$184,657 |
| 010.00 | 046.00 | SGRB - Lead Based Paint Remediation | 9/21/2012 | 9/24/2012 | 3 | | \$244,536 |
| 011.00 | 004.00 | Station Architectural Changes | 10/11/2012 | 10/12/2012 | 1 | | \$443,950 |
| 012.00 | 003.01 | Systems and Testing for Added TPSS | 12/13/2012 | 12/14/2012 | 1 | | \$1,443,193 |
| 013.00 | 005.02 | IDIQ Comm Contract (Rev 2) | 12/14/2012 | 1/22/2013 | 39 | | \$698,259 |
| 014.00 | 060.00 | Sewer Encasement Changes in Azusa | 12/18/2012 | 1/24/2013 | 37 | | \$141,354 |
| 015.00 | 037.02 | M&O - Materials Storage Revisions | 12/26/2012 | 1/15/2013 | 20 | | \$62,862 |
| 015.01 | 037.03 | M&O Storage Shelving Revisions | 9/16/2013 | 9/19/2013 | 3 | | \$20,380 |
| 016.00 | 002.00 | Relocation of Access Road to 3M Fac | 12/26/2012 | 1/16/2013 | 21 | | \$53,814 |
| 017.00 | 025.00 | 3 Electrical Casings for ALW | 2/27/2013 | 3/1/2013 | 2 | | \$219,033 |
| 018.00 | 073.00 | Hazardous Abatement at Bridges | 1/15/2013 | 2/6/2013 | 22 | | \$1,081,803 |
| 019.00 | 054.00 | City of Hope Conduits | 1/11/2013 | 1/22/2013 | 11 | | \$34,313 |
| 020.00 | 059.00 | Citrus TPSS Transformer Pad Changes | 2/6/2013 | 2/7/2013 | 1 | | \$34,536 |
| 021.00 | 075.00 | Demo & Replace Palm Dr. Roadway | 2/7/2013 | 2/14/2013 | 7 | | \$90,365 |
| 022.00 | 077.00 | M&O Differing Site Conditions; Pt 1 | 2/13/2013 | 2/15/2013 | 2 | | \$66,360 |
| 022.01 | 093.00 | M and O DSC T and M Work Part 2 | 3/8/2013 | 3/12/2013 | 4 | | \$66,625 |
| 022.02 | 103.00 | M and O DSC Part 3 | 3/27/2013 | 3/28/2013 | 1 | | \$35,211 |
| 022.03 | 115.00 | DSC at M and O Part 4 | 5/3/2013 | 5/7/2013 | 4 | | \$5,706 |
| 022.04 | 390.00 | M&O DSC - Part 5 | 7/14/2015 | 7/21/2015 | 7 | | \$7,192 |
| 023.00 | 089.00 | Contaminated Soil Abatement | 2/26/2013 | 2/27/2013 | 1 | | \$422,068 |
| 024.00 | 068.00 | Monrovia Sound Wall Panel Change | 2/26/2013 | 2/28/2013 | 2 | | (\$24,150) |
| 025.00 | 052.00 | Santa Anita Trail Detour | 3/8/2013 | 3/12/2013 | 4 | | \$27,691 |
| 026.00 | 070.00 | Block Type Change at M&O Building | 3/26/2013 | 3/26/2013 | 0 | | \$35,016 |
| 027.00 | 065.00 | M&O IT Changes-Duct Banks/Conduits | 3/26/2013 | 3/26/2013 | 0 | | \$88,650 |
| 027.01 | 065.01 | M&O IT Changes - Power to WAP | 9/4/2013 | 9/6/2013 | 2 | | \$73,049 |
| 027.02 | 065.02 | M&O IT Changes - Remaining Work | 7/16/2014 | 7/17/2014 | 1 | | \$155,991 |
| 027.03 | 065.04 | M&O IT Changes -Furniture Interface | 6/18/2015 | 6/19/2015 | 1 | | \$293,896 |
| 027.04 | 065.05 | M&O IT Changes-OFCI Eqpt and A/V | 7/17/2015 | 7/21/2015 | 4 | | \$380,546 |
| 028.00 | 039.01 | Delete Layover Building | 4/11/2013 | 4/12/2013 | 1 | | (\$313,832) |
| 029.00 | 095.00 | 8in Sanitary Sewer Line- Alameda Av | 4/23/2013 | 4/25/2013 | 2 | | \$226,089 |
| 029.01 | 095.01 | Alameda Sewer Line Revised Scope | 11/22/2013 | 11/26/2013 | 4 | | (\$37,425) |
| 030.00 | 102.00 | M&O-Disconnect Switches, Insulators | 4/23/2013 | 4/25/2013 | 2 | | \$67,817 |
| 031.00 | 110.00 | Rmv Abandoned Utility Line @ Dalton | 4/23/2013 | 4/25/2013 | 2 | | \$1,562 |



Change Management Log

Date: 10/9/2015

Page: 2 of 6

Project: C1135 Alignment - FTC Contract #: C1135

Change Orders

| Number | Change Management | Title | Initiated Date | Approved Date | Outstanding Days | Time Extension | Amount |
|-------------------------------|-------------------|-------------------------------------|----------------|---------------|------------------|----------------|-------------|
| EXECUTED Change Orders | | | | | | | |
| 032.00 | 104.00 | Highland Ave Abandoned CMP sleeves | 5/1/2013 | 5/3/2013 | 2 | | \$15,005 |
| 033.00 | 114.00 | Remove contaminated wood culvert | 5/3/2013 | 5/7/2013 | 4 | | \$4,714 |
| 034.00 | 128.00 | M&O Backup Power/Generator Changes | 5/13/2013 | 5/21/2013 | 8 | | \$121,340 |
| 035.00 | 083.00 | M&O Vehicle Sanding System Changes | 5/21/2013 | 5/24/2013 | 3 | | \$27,463 |
| 036.00 | 006.00 | IFS Related Contract Changes | 6/7/2013 | 6/11/2013 | 4 | | (\$263,111) |
| 037.00 | 137.00 | CTS Redesign | 7/12/2013 | 7/16/2013 | 4 | | \$58,214 |
| 038.00 | 138.00 | Segment 4 Safety Manager | 7/12/2013 | 7/16/2013 | 4 | | \$157,274 |
| 038.01 | 138.01 | Segment 4 Safety manager - Part 2 | 11/19/2013 | 11/21/2013 | 2 | | \$72,963 |
| 038.02 | 138.02 | Segment 4 Safety Manager - Part 3 | 4/3/2014 | 4/7/2014 | 4 | | \$82,271 |
| 039.00 | 085.00 | M&O Drainage System Enhancements | 7/19/2013 | 8/13/2013 | 25 | | \$251,579 |
| 040.00 | 067.00 | Station Paver Changes | 7/23/2013 | 8/13/2013 | 21 | | \$728,340 |
| 040.01 | 067.01 | Rebar Changes for Station Pavers | 10/28/2013 | 10/31/2013 | 3 | | \$10,586 |
| 041.00 | 112.00 | 12" Pasadena Waterline Potholes | 8/12/2013 | 8/16/2013 | 4 | | \$19,735 |
| 042.00 | 150.00 | Demo Abandoned Water Lines @ Dalton | 8/12/2013 | 8/16/2013 | 4 | | \$5,937 |
| 043.00 | 007.01 | Emer. Backup for Guideway Lighting | 8/16/2013 | 10/1/2013 | 46 | | \$359,158 |
| 044.00 | 172.00 | Contaminated Wood Culvert Sta. 1202 | 8/27/2013 | 8/28/2013 | 1 | | \$7,712 |
| 045.00 | 139.00 | BLS Changes | 8/28/2013 | 9/4/2013 | 7 | | \$110,801 |
| 046.00 | 165.00 | Azusa-Alameda Station; 2nd Portal | 8/28/2013 | 9/4/2013 | 7 | | \$77,175 |
| 047.00 | 145.00 | St. Joseph drainage enhancements | 9/4/2013 | 9/6/2013 | 2 | | \$17,592 |
| 048.00 | 149.00 | M&O - Lights at NW Corner Park | 9/4/2013 | 9/6/2013 | 2 | | \$29,351 |
| 049.00 | 174.00 | TPSS #5 Cal-Am Power Conflict | 9/4/2013 | 9/6/2013 | 2 | | \$127,260 |
| 050.00 | 171.00 | Relocate Access Stair to Foothill | 9/4/2013 | 9/6/2013 | 2 | | \$20,276 |
| 051.00 | 173.00 | Dalton 8" Water Line Work | 9/5/2013 | 9/12/2013 | 7 | | \$35,316 |
| 052.00 | 071.00 | Duarte Rd Screen Wall Change | 9/5/2013 | 9/17/2013 | 12 | | (\$133,864) |
| 053.00 | 176.00 | Remove Contaminatd Wood-Buena Vista | 9/10/2013 | 9/12/2013 | 2 | | \$5,543 |
| 054.00 | 147.00 | DECCO Bypass | 9/10/2013 | 9/12/2013 | 2 | | \$18,519 |
| 055.00 | 166.00 | Foothill Blvd. Water/SD Relocation | 9/20/2013 | 9/20/2013 | 0 | | \$127,074 |
| 056.00 | 186.00 | Contaminated Wood @ San Gabriel Ave | 9/23/2013 | 9/24/2013 | 1 | | \$4,291 |
| 057.00 | 194.00 | California/Duarte Water Line Work | 10/28/2013 | 10/31/2013 | 3 | | \$220,743 |
| 058.00 | 189.00 | Four Utility Changes | 10/28/2013 | 10/31/2013 | 3 | | \$14,157 |
| 059.00 | 180.00 | Remove/Dispose of ACM E of Highland | 10/30/2013 | 11/1/2013 | 2 | | \$29,311 |
| 060.00 | 179.00 | CTS Upgrade to OC-192 | 10/30/2013 | 11/1/2013 | 2 | | \$112,543 |
| 060.01 | 371.00 | IDIQ Pricing Error - OC-192 Cards | 4/29/2015 | 5/6/2015 | 7 | | \$87,034 |
| 061.00 | 213.00 | Inwindale On-ramp Stockpile | 11/8/2013 | 11/21/2013 | 13 | | \$200,185 |
| 062.00 | 053.00 | Delete Totten Tubes Scope of Work | 11/8/2013 | 11/21/2013 | 13 | | (\$143,801) |
| 063.00 | 146.00 | Home Depot Striping and Signing | 11/15/2013 | 11/21/2013 | 6 | | \$21,003 |
| 064.00 | 204.00 | Unknown Duct Bank @ San Gabriel Ave | 11/15/2013 | 11/21/2013 | 6 | | \$1,265 |
| 065.00 | 140.00 | M&O-Overhead Work Platform Changes | 12/5/2013 | 12/16/2013 | 11 | | \$317,656 |
| 066.00 | 217.00 | Buried SD & Headwall, STA 1306+50 | 12/6/2013 | 12/17/2013 | 11 | | \$1,020 |
| 067.00 | 219.00 | Contaminated Soil, Monrovia Station | 12/12/2013 | 12/17/2013 | 5 | | \$17,503 |
| 068.00 | 220.00 | DSC at Sawpit Wash Abutments | 12/12/2013 | 12/17/2013 | 5 | | \$12,668 |
| 069.00 | 188.00 | Costco Emergency Gate-Path to POS | 1/21/2014 | 1/22/2014 | 1 | | \$19,882 |
| 070.00 | 214.00 | M&O - Generator Load Bank | 1/21/2014 | 1/22/2014 | 1 | | \$38,092 |
| 071.00 | 224.00 | Alameda South Water Line Tie-in | 1/30/2014 | 1/31/2014 | 1 | | \$6,330 |
| 072.00 | 202.00 | Aesthetic Lighting Provisions-SGRB | 2/3/2014 | 2/4/2014 | 1 | | \$27,055 |
| 073.00 | 160.00 | Move Mountain Interlocking Bungalow | 2/11/2014 | 2/13/2014 | 2 | | \$68,596 |
| 074.00 | 200.00 | M&O Parts Carousel Warranty & PM | 2/11/2014 | 2/13/2014 | 2 | | \$68,906 |
| 075.00 | 235.00 | Remove Contaminated Wood Ties | 2/14/2014 | 2/18/2014 | 4 | | \$4,571 |
| 076.00 | 234.00 | Accelerate Work at California Ave | 2/14/2014 | 2/18/2014 | 4 | | \$5,663 |
| 077.00 | 247.00 | Line Stop in California | 2/18/2014 | 2/20/2014 | 2 | | \$14,524 |



Change Management Log

Date: 10/9/2015

Page: 3 of 6

Project: C1135 Alignment - FTC Contract #: C1135

Change Orders

| Number | Change Management | Title | Initiated Date | Approved Date | Outstanding Days | Time Extension | Amount |
|-------------------------------|-------------------|-------------------------------------|----------------|---------------|------------------|----------------|-------------|
| EXECUTED Change Orders | | | | | | | |
| 078.00 | 201.00 | Added Sound Wall, SW of IFS | 2/27/2014 | 2/28/2014 | 1 | | \$18,201 |
| 079.00 | 238.00 | M&O-MOW Canopy Structural Eval | 2/27/2014 | 2/28/2014 | 1 | | \$7,147 |
| 079.01 | 238.01 | M&O - MOW Canopy Solar | 8/20/2014 | 8/26/2014 | 6 | | \$714,659 |
| 080.00 | 232.00 | Car Moving Tractor-Coupler Upgrade | 2/27/2014 | 2/28/2014 | 1 | | \$177,145 |
| 081.00 | 242.00 | Car Moving Tractor Options/Features | 2/27/2014 | 2/28/2014 | 1 | | \$69,099 |
| 082.00 | 091.00 | Rockvale Water Line Mitigation | 3/4/2014 | 3/5/2014 | 1 | | \$163,750 |
| 082.01 | 091.01 | Rockvale Water Line-EIC credit | 4/11/2014 | 4/14/2014 | 3 | | (\$5,391) |
| 083.00 | 251.00 | Cut and Move Rail to Segment 1 | 3/4/2014 | 3/5/2014 | 1 | | \$249,934 |
| 084.00 | 218.00 | Delete Equipment at ROC | 3/26/2014 | 3/27/2014 | 1 | | (\$91,708) |
| 085.00 | 239.00 | Install Sound Wall Door @ STA. 1169 | 3/26/2014 | 3/27/2014 | 1 | | \$12,737 |
| 086.00 | 250.00 | Change Top Row of Block Wall 1124.1 | 3/26/2014 | 3/27/2014 | 1 | | \$3,688 |
| 087.00 | 229.00 | Irwindale TPSS-Adjust Eqpt. Layout | 4/3/2014 | 4/7/2014 | 4 | | \$17,878 |
| 088.00 | 262.00 | Provisional Sum Adjustment | 4/3/2014 | 4/7/2014 | 4 | | \$0 |
| 088.01 | 262.01 | Provisional Sum Adjustment - 2 | 9/19/2014 | 9/25/2014 | 6 | | \$0 |
| 088.02 | 262.02 | Provisional Sum Adjustment - 3 | 11/12/2014 | 11/14/2014 | 2 | | \$0 |
| 088.03 | 262.03 | Provisional Sum Adjustment - 4 | 3/19/2015 | 3/19/2015 | 0 | | \$0 |
| 089.00 | 261.00 | Longer DF Bolts - SGRB | 4/3/2014 | 4/7/2014 | 4 | | \$17,331 |
| 090.00 | 169.02 | M&O Trimming Table Changes (rev. 2) | 4/11/2014 | 4/14/2014 | 3 | | \$54,083 |
| 091.00 | 181.00 | Alameda Utility Changes | 4/11/2014 | 4/14/2014 | 3 | | (\$9,599) |
| 092.00 | 241.00 | Business Center TPSS Crane Changes | 4/23/2014 | 4/28/2014 | 5 | | \$13,655 |
| 093.00 | 276.00 | Myrtle Early Completion Incentive | 4/23/2014 | 4/28/2014 | 5 | | \$160,000 |
| 094.00 | 254.00 | Drainage East of Pasadena Ave. | 4/23/2014 | 4/28/2014 | 5 | | \$6,569 |
| 095.00 | 275.00 | Remove Rail Ties at 1st/Santa Clara | 4/23/2014 | 4/28/2014 | 5 | | \$2,270 |
| 096.00 | 274.00 | Buried Concrete @ Huntington Bridge | 4/23/2014 | 4/28/2014 | 5 | | \$2,819 |
| 097.00 | 269.00 | Asbestos Pipe at Duarte and Myrtle | 4/23/2014 | 4/28/2014 | 5 | | \$6,583 |
| 098.00 | 278.00 | Abandoned Gas Line at California | 5/6/2014 | 5/7/2014 | 1 | | \$8,170 |
| 099.00 | 170.00 | M&O Car Wash Betterments | 5/6/2014 | 5/7/2014 | 1 | | \$166,144 |
| 100.00 | 223.00 | M&O-Volume Control for PA Speakers | 5/6/2014 | 5/7/2014 | 1 | | \$38,105 |
| 101.00 | 283.00 | Track Work Around at Mountain Ave | 5/6/2014 | 5/7/2014 | 1 | | \$29,996 |
| 102.00 | 284.00 | Install 115# Buffer Rails in Seg. 1 | 5/6/2014 | 5/7/2014 | 1 | | \$29,442 |
| 103.00 | 230.00 | Azusa-Citrus Ped Crossing Operation | 5/6/2014 | 5/7/2014 | 1 | | \$84,183 |
| 104.00 | 231.00 | Red Signal Violation Indication | 6/3/2014 | 6/3/2014 | 0 | | \$335,134 |
| 105.00 | 253.00 | Remove Stem Wall along Duarte Rd. | 6/11/2014 | 6/12/2014 | 1 | | \$37,527 |
| 106.00 | 271.00 | DVR Changes | 7/16/2014 | 7/17/2014 | 1 | | \$181,301 |
| 107.00 | 260.00 | M&O Supplemental Fire Water System | 7/16/2014 | 8/4/2014 | 19 | | \$1,642,824 |
| 108.00 | 163.00 | 1st/Santa Clara Grade X-ing Changes | 7/25/2014 | 7/30/2014 | 5 | | \$156,177 |
| 109.00 | 164.00 | M&O Body Shop Changes | 7/25/2014 | 8/4/2014 | 10 | | \$488,598 |
| 110.00 | 256.00 | Monrovia North Bunglow LCP Changes | 7/25/2014 | 7/30/2014 | 5 | | \$125,313 |
| 111.00 | 237.00 | M&O-Signaling System Changes | 7/29/2014 | 8/4/2014 | 6 | | \$1,133,746 |
| 112.00 | 252.00 | Irwindale Security Kiosk Provisions | 8/4/2014 | 8/6/2014 | 2 | | \$178,044 |
| 112.01 | 252.01 | Irwindale Security Kiosk - Part 2 | 2/9/2015 | 2/11/2015 | 2 | | \$47,168 |
| 112.02 | 252.02 | Irwindale Security Kiosk - Credit | 7/14/2015 | 7/21/2015 | 7 | | (\$47,168) |
| 113.00 | 281.00 | M&O - Accent Colors | 8/4/2014 | 8/6/2014 | 2 | | \$26,928 |
| 114.00 | 305.00 | Lead Paint, Foothill Median Barrier | 8/18/2014 | 8/20/2014 | 2 | | \$5,690 |
| 115.00 | 270.00 | TES Load Flow Simulation | 8/19/2014 | 8/21/2014 | 2 | | \$22,399 |
| 116.00 | 203.00 | Mayflower Driveway/Wall Credit | 8/20/2014 | 8/26/2014 | 6 | | (\$19,138) |
| 117.00 | 307.00 | Contaminated Wood Ties-Santa Anita | 8/20/2014 | 8/26/2014 | 6 | | \$3,226 |
| 118.00 | 082.01 | M&O / 3M Fence Revisions (rev 1) | 9/17/2014 | 9/25/2014 | 8 | | \$886,650 |
| 119.00 | 314.00 | Mountain Early Completion Incentive | 9/17/2014 | 9/24/2014 | 7 | | \$80,000 |
| 120.00 | 301.00 | Santa Anita Avenue Bridge Artwork | 9/17/2014 | 9/25/2014 | 8 | | \$57,224 |



Change Management Log

Date: 10/9/2015

Page: 4 of 6

Project: C1135 Alignment - FTC Contract #: C1135

Change Orders

| Number | Change Management | Title | Initiated Date | Approved Date | Outstanding Days | Time Extension | Amount |
|-------------------------------|-------------------|-------------------------------------|----------------|---------------|------------------|----------------|-----------|
| EXECUTED Change Orders | | | | | | | |
| 121.00 | 313.00 | Additional Traffic Signal Testing D | 9/19/2014 | 9/25/2014 | 6 | | \$7,875 |
| 122.00 | 320.00 | Remove Asbestos Pipe at Virginia | 11/12/2014 | 11/14/2014 | 2 | | \$9,485 |
| 123.00 | 303.00 | Additional Anti-Graffiti Coating | 12/8/2014 | 12/8/2014 | 0 | | \$63,727 |
| 124.00 | 326.00 | Santa Anita Avenue Bridge Lighting | 12/8/2014 | 12/8/2014 | 0 | | \$208,633 |
| 124.01 | 326.01 | Santa Anita Bridge Lighting-Part 2 | 1/16/2015 | 1/19/2015 | 3 | | \$5,744 |
| 124.02 | 380.00 | Santa Anita Ave. Bridge Lighting-3 | 7/14/2015 | 7/21/2015 | 7 | | \$68,775 |
| 125.00 | 335.00 | M&O - Interior Wall Revisions | 12/18/2014 | 12/19/2014 | 1 | | \$43,786 |
| 126.00 | 304.00 | M&O Lobby Aesthetic Changes | 12/18/2014 | 12/19/2014 | 1 | | \$128,047 |
| 127.00 | 292.00 | M&O - Guard House Changes | 12/19/2014 | 12/19/2014 | 0 | | \$65,463 |
| 128.00 | 339.00 | Mountain Ped. Crossing Changes | 1/8/2015 | 1/12/2015 | 4 | | \$96,159 |
| 129.00 | 340.00 | Business Center TPSS Drainage | 1/16/2015 | 1/19/2015 | 3 | | \$249,959 |
| 130.00 | 255.00 | Virginia TPSS Access Road | 1/8/2015 | 1/12/2015 | 4 | | \$39,718 |
| 131.00 | 291.00 | Eliminate 'Train Coming' Signs | 1/8/2015 | 1/12/2015 | 4 | | \$9,325 |
| 132.00 | 322.00 | Replace Existing OCS Pole at SMV | 1/16/2015 | 1/19/2015 | 3 | | \$27,010 |
| 133.00 | 187.01 | Irwindale Ramp Signs | 1/20/2015 | 1/26/2015 | 6 | | \$125,015 |
| 134.00 | 346.00 | Delay in Setting of Yard Substation | 1/20/2015 | 1/26/2015 | 6 | | \$15,181 |
| 135.00 | 344.00 | Virginia TPSS-Access for Delivery | 1/30/2015 | 2/2/2015 | 3 | | \$67,019 |
| 136.00 | 328.00 | Rail Profile Grinding | 2/9/2015 | 2/18/2015 | 9 | | \$524,000 |
| 137.00 | 065.03 | M&O Main Building Comm. Room Floors | 2/17/2015 | 2/17/2015 | 0 | | \$4,402 |
| 138.00 | 353.00 | 1st/Santa Clara Noise Mitigations | 2/17/2015 | 2/17/2015 | 0 | | \$13,889 |
| 139.00 | 323.00 | Add Pavers to Duarte Station W Ramp | 2/18/2015 | 2/18/2015 | 0 | | \$31,982 |
| 140.00 | 338.00 | M&O-Wheel Truing Machine Car Puller | 2/19/2015 | 2/19/2015 | 0 | | \$83,112 |
| 141.00 | 258.00 | M&O Tactile Guidance Changes | 2/23/2015 | 2/26/2015 | 3 | | \$203,945 |
| 142.00 | 352.00 | M&O - Fire Alarm System | 2/23/2015 | 2/26/2015 | 3 | | \$238,983 |
| 143.00 | 351.00 | Sierra Madre Track Rehab | 2/23/2015 | 2/26/2015 | 3 | | \$18,107 |
| 144.00 | 349.00 | Remove water line east of Highland | 2/23/2015 | 2/26/2015 | 3 | | \$4,648 |
| 145.00 | 360.00 | M&O Facility - Yard Control Console | 3/2/2015 | 3/3/2015 | 1 | | \$23,158 |
| 146.00 | 359.00 | Generators for Testing-SRGB to IRW | 3/2/2015 | 3/3/2015 | 1 | | \$6,758 |
| 147.00 | 325.00 | Station Identifier Changes | 3/23/2015 | 3/25/2015 | 2 | | \$4,712 |
| 148.00 | 345.00 | Irwindale Signal Case & Push Button | 3/24/2015 | 3/25/2015 | 1 | | \$111,110 |
| 149.00 | 296.00 | M&O Service Vehicle Pathways | 3/26/2015 | 3/30/2015 | 4 | | \$164,480 |
| 149.01 | 296.01 | M&O-Service Vehicle Pathways - 2 | 6/18/2015 | 6/22/2015 | 4 | | \$4,955 |
| 150.00 | 327.00 | M&O Facility-NW Corner Fence & Wall | 4/29/2015 | 5/5/2015 | 6 | | \$461,480 |
| 151.00 | 311.00 | Abandoned California Water Lines | 4/29/2015 | 5/6/2015 | 7 | | \$61,219 |
| 152.00 | 358.00 | M&O Facility-Interior Wall Finishes | 4/29/2015 | 5/6/2015 | 7 | | \$24,582 |
| 153.00 | 337.00 | Grade X-ing Train Signal Changes | 4/29/2015 | 5/6/2015 | 7 | | \$136,849 |
| 154.00 | 367.00 | M&O NW Corner Hardscape Changes | 5/8/2015 | 5/20/2015 | 12 | | \$444,632 |
| 155.00 | 363.00 | M&O Early Completion Milestone | 5/13/2015 | 5/20/2015 | 7 | | \$215,290 |
| 156.00 | 375.00 | M&O - Beaumont Acceleration for TCO | 5/14/2015 | 5/20/2015 | 6 | | \$130,681 |
| 157.00 | 357.00 | Add APS @ 2 intersections in Duarte | 5/15/2015 | 5/20/2015 | 5 | | \$39,826 |
| 158.00 | 257.00 | Comm. Changes Parking Structures | 6/4/2015 | 6/4/2015 | 0 | | \$186,672 |
| 159.00 | 257.01 | Duarte Parking Lot ETEs and CCTVs | 6/4/2015 | 6/4/2015 | 0 | | \$289,578 |
| 160.00 | 364.00 | M&O - MOW Track Fouling Issue | 6/4/2015 | 6/4/2015 | 0 | | \$309,417 |
| 161.00 | 376.00 | Remove Hazardous Waste at Angeleno | 6/4/2015 | 6/4/2015 | 0 | | \$4,635 |
| 162.00 | 383.00 | M&O - WTM elect changes in pit | 6/4/2015 | 6/4/2015 | 0 | | \$19,063 |
| 163.00 | 381.00 | M&O - Elevator Inspector Upgrades | 6/4/2015 | 6/4/2015 | 0 | | \$12,200 |
| 164.00 | 382.00 | M&O - Fire Alarm System Upgrades | 6/11/2015 | 6/15/2015 | 4 | | \$109,631 |
| 164.01 | 389.00 | M&O - Fire Alarm System Upgrades-2 | 6/18/2015 | 6/22/2015 | 4 | | \$109,920 |
| 165.00 | 385.00 | M&O-replace LRV access stairs | 6/11/2015 | 6/15/2015 | 4 | | \$9,519 |
| 166.00 | 384.00 | M&O-NW Corner Added Paving & Curb | 6/11/2015 | 6/15/2015 | 4 | | \$19,095 |



Change Management Log

Date: 10/9/2015

Page: 5 of 6

Project: C1135 Alignment - FTC Contract #: C1135

Change Orders

| Number | Change Management | Title | Initiated Date | Approved Date | Outstanding Days | Time Extension | Amount |
|-------------------------------|-------------------|-------------------------------------|----------------|---------------|------------------|----------------|--------------|
| EXECUTED Change Orders | | | | | | | |
| 167.00 | 391.00 | M&O Main Entrance Changes | 7/14/2015 | 7/21/2015 | 7 | | \$209,772 |
| 168.00 | 306.00 | Close Fence Gaps to Adj. Buildings | 7/14/2015 | 7/21/2015 | 7 | | \$19,939 |
| 169.00 | 377.00 | Pedestrian Grade Crossing Mods | 7/14/2015 | 7/21/2015 | 7 | | \$31,469 |
| 170.00 | 343.00 | Striping/Signs at Station Ped Xings | 7/14/2015 | 7/21/2015 | 7 | | \$267,488 |
| 171.00 | 362.00 | M&O - Move East Lobby Wall | 8/12/2015 | 8/13/2015 | 1 | | \$45,156 |
| 172.00 | 394.00 | Intersection Changes at Highland an | 8/14/2015 | 8/14/2015 | 0 | | \$25,146 |
| 173.00 | 393.00 | Relocation of Buena Vista Pole D CS | 8/14/2015 | 8/14/2015 | 0 | | \$44,646 |
| 174.00 | 395.00 | SCE TPSS Metering Pad Extensions | 9/2/2015 | 9/9/2015 | 7 | | \$18,601 |
| Subtotal: | | | | | | | \$23,290,824 |
| Subtotal: | | | | | | | \$23,290,824 |
| Total: | | | | | | | \$23,290,824 |

Open PCOs

| PCO Number | Title |
|-------------|--------------------------------------|
| OPEN | |
| 029.00 | Del. Irwindale/Gladstone Mitigation |
| 080.00 | Delete Evergreen / Myrtle Mitigation |
| 085.00 | Joseph TPSS Power Feed Credit |
| 087.00 | ETEL/PTEL Faceplate Betterment |
| 091.00 | UP Tunnel Analysis & Modifications |
| 099.01 | Rail Profile Grinding - Closeout |
| 100.00 | Change Wayside Operational Signage |
| 101.00 | Peck Road Ramp |
| 103.00 | Tactile Guidance Tile at Stations |
| 110.00 | M&O Completion Items |
| 111.00 | 3M Fence Changes |
| 112.00 | M&O Fire Tank Punch List Items |
| 113.00 | Added Delineators at Grade Crossings |
| 114.00 | Duarte Rd Additional Landscaping |
| 115.00 | Baldwin & Michillinda Standpipes |

Open RFCs

| RFC Number | Title |
|-------------|-------------------------------------|
| OPEN | |
| 051.00 | Irwindale Ramp CSP |
| 088.00 | Programming Changes for SCRRA Exit |
| 111.00 | Move BLS at Azu-Alam Sta CSP |
| 112.00 | Temporary FACP Monitoring for Parki |
| 114.00 | Changes to MO Landscaping CSP |
| 115.00 | MO Flooring Acceleration CSP |
| 127.00 | Steam Cleaner Change CSP |
| 131.00 | Add Training for WI Truing Mach CSP |
| 133.00 | Landscape Accel-Changes at MO CSP |
| 135.00 | Irwindale Ped Xing Extra Work CSP |
| 136.00 | MO Entrance Changes Part 2 CSP |

Open RFC Notices

| Number | Title |
|--------|--------------------------------------|
| 037.00 | DSC at Santa Anita Wash Abutment 1 |
| 044.00 | DSC Utility at Azusa Avenue |
| 086.00 | Ground Grid Damaged at Citrus TPSS |
| 098.00 | Housekeeping Pads for Electrical Eq |
| 100.00 | MO Yard Signage Changes |
| 105.00 | MO Facility Blow Down Pit Grating C |
| 116.00 | Added Paving at LRV Loading Driveway |
| 123.00 | Relocate the CICs at Stations |



Change Management Log

Date: 10/9/2015

Page: 6 of 6

Project: C1135 Alignment - FTC Contract #: C1135

Open RFC Notices

| Number | Title |
|--------|----------------------------------|
| 134.00 | Pedestal Track Welds at MO |
| 136.00 | MO Entrance Changes Part 2 |
| 140.00 | CPUC Completion Items Extra Work |
| 141.00 | Extending Track Walkway to 48 In |



Description: Intermodal Parking Facilities & Enhancements **Status:** September 15, 2015

Contract No.: C1150

Contractor: Webcor Builders

Progress Completed This Period

Design

-

Activities Planned Next Period

Design

-

Areas of Concern

- **ELEVATOR CERTIFICATION** - The Monrovia, Citrus, and Inwindale Parking Structure elevators have not received the required California State inspection and certification. The State inspection has been scheduled for the remaining facilities and the certification is expected by October 2015.

Areas of Concern (Continued)



Description: Intermodal Parking Facilities & Enhancements **Status:** September 15, 2015
Contract No.: C1150 **Contractor:** Webcor Builders

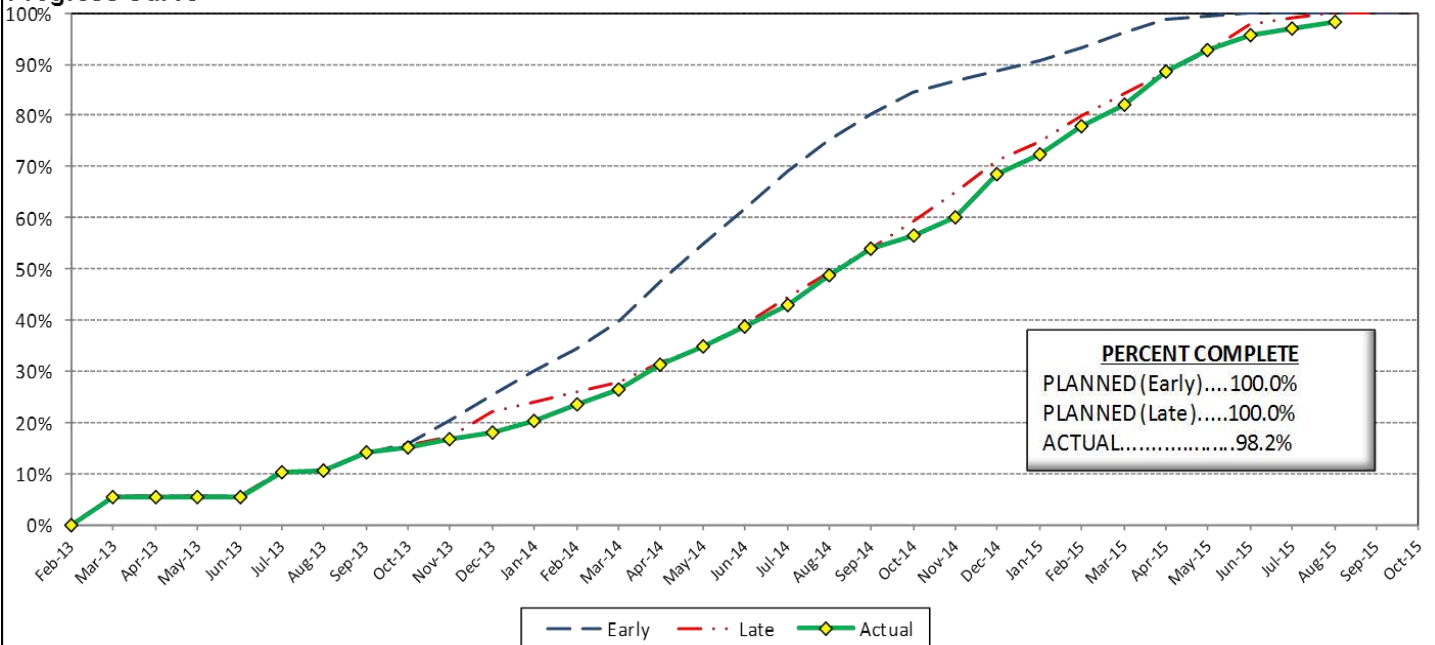
Cost Summary:

| | Million(s) |
|--------------------------------------|------------|
| CONTRACT | |
| Contract Award Value: | 48.8 |
| Executed Change Orders: | 1.3 |
| Current Contract Value: | 50.1 |
| Potential Change Orders: | (0.1) |
| Current Forecast: | 50.0 |
| Earned Value/Actual Cost | 49.3 |
| AUTHORIZATION FOR EXPENDITURE | |
| Budget | 50.4 |
| Commitment | 50.1 |
| Balance | 0.4 |

Cost Assessment:

This period, the current cost forecast increased \$17 Thousand. The cost increase is due to the following: PCO 016.01 - *Artwork Installation*, and PCO 018 - *Inwindale Kiosk Foundation*. The current forecast is within the authorized budget.

Progress Curve



Schedule Summary:

| | |
|-----------------------------|---------------------|
| Contract Award: | 02/27/13 |
| Notice to Proceed (NTP) : | 03/20/13 |
| Original Contract Duration: | 845 Calendar Days |
| Current Contract Duration: | 1,011 Calendar Days |
| Elapsed Time from NTP: | 909 Calendar Days |

Contract Milestones

| Milestones | Description | Original Contract | Current Contract | Forecast | Variance |
|------------|------------------------|-------------------|------------------|-------------|----------|
| 1 | Substantial Completion | 03/15/15 | 08/28/15 | 8/28/2015 A | 0 |
| 2 | Punchlist Complete | 05/29/15 | 11/11/15 | 11/11/15 | 0 |
| 3 | Final Completion | 07/13/15 | 12/26/15 | 12/26/15 | 0 |
| 4 | TPSS Work | 03/01/14 | 03/01/14 | 3/31/2014 A | (30) |

Schedule Assessment:

The Design-Build Contractor was granted Substantial Completion on August 28, 2015.



PARKING FACILITY CONSTRUCTION IMAGES



Arcadia Parking Structure Site Overview



Monrovia Parking Structure Site Overview



PARKING FACILITY CONSTRUCTION IMAGES

Duarte Bus Stop Shelters



Irwindale Crash Wall

Azusa-Citrus Parking Structure Site Overview





Change Management Log

Date: 10/9/2015

Page: 1 of 2

Project: C1150 Parking - Webcor Contract #: C1150

| | | | | | |
|---------------------------|--------------|-------|-------------------------|--------------|-------|
| Original Contract Amount: | \$48,750,000 | | | | |
| Approved Change Orders: | \$1,360,626 | 2.79% | Pending Change Orders: | \$0 | 0.00% |
| Current Contract Total: | \$50,110,626 | | Pending Contract Total: | \$50,110,626 | 2.79% |

Change Orders

| Number | Change Management | Title | Initiated Date | Approved Date | Outstanding Days | Time Extension | Amount |
|-------------------------------|-------------------|-------------------------------------|----------------|---------------|------------------|----------------|-------------|
| EXECUTED Change Orders | | | | | | | |
| 001.00 | 001.00 | Monrovia Parking Alternative Layout | 6/25/2013 | 7/11/2013 | 16 | | \$21,382 |
| 001.01 | 001.01 | Monrovia Alternative - Cancellation | 9/17/2013 | 10/7/2013 | 20 | | (\$12,006) |
| 002.00 | 003.00 | Clock Tower Procurement | 7/3/2013 | 7/11/2013 | 8 | | \$107,246 |
| 003.00 | 002.00 | Relocate Elevator @ Azusa-Citrus PF | 12/18/2013 | 1/8/2014 | 21 | | \$159,899 |
| 004.00 | 013.00 | Irwindale Structure Relocation | 1/23/2014 | 8/28/2014 | 217 | 90 | (\$65,564) |
| 005.00 | 018.00 | Monrovia Demo Unforeseen Conditions | 3/18/2014 | 3/26/2014 | 8 | | \$17,013 |
| 006.00 | 010.00 | Arcadia Transit Plaza Betterments | 3/14/2014 | 3/26/2014 | 12 | | \$35,466 |
| 007.00 | 009.01 | Irwindale Intersection Betterments | 3/25/2014 | 3/26/2014 | 1 | | \$19,985 |
| 008.00 | 017.00 | Irwindale Intersection Water Line | 3/25/2014 | 4/14/2014 | 20 | | \$7,748 |
| 009.00 | 020.00 | Unforeseen Underground Demo-Arcadia | 6/13/2014 | 7/9/2014 | 26 | | \$6,313 |
| 010.00 | 011.00 | Soldano TPSS Added ROW Fence | 7/24/2014 | 7/28/2014 | 4 | | \$8,481 |
| 011.00 | 024.00 | SCE Power Feed to DB2 Arcadia TPSS | 7/24/2014 | 7/28/2014 | 4 | | \$17,199 |
| 012.00 | 025.00 | Additional Sidewalk at Arcadia | 7/24/2014 | 7/28/2014 | 4 | | \$3,342 |
| 013.00 | 006.00 | St. Joseph Drainage Enhancements | 7/31/2014 | 7/31/2014 | 0 | | \$139,488 |
| 014.00 | 012.00 | Additional Conduit Provisions | 8/13/2014 | 9/3/2014 | 21 | | \$57,262 |
| 015.00 | 030.00 | Unforeseen Conditions at Michillind | 8/22/2014 | 8/28/2014 | 6 | | \$1,643 |
| 016.00 | 019.00 | Parking Facility Artwork | 8/27/2014 | 8/28/2014 | 1 | | \$75,850 |
| 017.00 | 034.00 | Michillinda Conduit Demo & Pull Box | 11/12/2014 | 11/20/2014 | 8 | | \$31,506 |
| 018.00 | 016.00 | Monrovia Canopies & Banding Color | 12/19/2014 | 12/29/2014 | 10 | | \$247,577 |
| 019.00 | 035.00 | Irwindale CCTV Pole | 12/29/2014 | 1/5/2015 | 7 | | \$6,220 |
| 020.00 | 039.00 | Engineering Costs for Arcadia Clock | 12/17/2014 | 12/29/2014 | 12 | | \$5,292 |
| 021.00 | 008.00 | Azusa-Citrus Plaza Pavers | 1/5/2015 | 1/13/2015 | 8 | | \$7,350 |
| 022.00 | 038.00 | Temporary Power for Irrigation at M | 1/7/2015 | 1/13/2015 | 6 | | \$1,465 |
| 023.00 | 037.00 | Additional Slurry for City of Arcad | 1/7/2015 | 1/13/2015 | 6 | | \$7,460 |
| 024.00 | 033.00 | Elevator Holding Tanks | 3/25/2015 | 3/27/2015 | 2 | | \$76,833 |
| 025.00 | 029.00 | Metro-Requestd Elevator Vent Detail | 2/12/2015 | 2/12/2015 | 0 | | \$11,553 |
| 026.00 | 041.00 | Azusa Citrus Grand Pylon Power | 2/13/2015 | 2/13/2015 | 0 | | \$4,742 |
| 027.00 | 045.00 | Irwindale Form Liner Product Change | 4/9/2015 | 4/9/2015 | 0 | | \$13,170 |
| 028.00 | 044.00 | Irwindale City Light Poles Upgrade | 4/9/2015 | 4/9/2015 | 0 | | \$10,543 |
| 029.00 | 043.00 | Metro Requested Signage Betterments | 4/10/2015 | 6/24/2015 | 75 | | \$12,884 |
| 030.00 | 027.00 | ETEL Enclosures | 4/10/2015 | 4/30/2015 | 20 | | \$42,885 |
| 031.00 | 046.00 | Generator for Monrovia Elevators | 4/21/2015 | 4/30/2015 | 9 | | \$26,901 |
| 032.00 | 049.00 | Irwindale Completion Incentive | 6/8/2015 | 6/11/2015 | 3 | | \$50,000 |
| 033.00 | 053.00 | Systems Interface Delay | 6/10/2015 | 6/12/2015 | 2 | 34 | \$0 |
| 034.00 | 047.00 | CCTV Scope at Duarte Surface Lot | 6/11/2015 | 6/16/2015 | 5 | | \$87,799 |
| 035.00 | 048.00 | Irwindale Crash Wall Screen Revisio | 6/25/2015 | 6/29/2015 | 4 | | \$26,694 |
| 036.00 | 054.00 | Irwindale Street Improvements | 7/7/2015 | 7/8/2015 | 1 | | \$14,707 |
| 037.00 | 055.00 | Systems Interface Delay Part 2 | 7/16/2015 | 7/17/2015 | 1 | 42 | \$0 |
| 038.00 | 051.00 | Relocate Monrovia Jobsite Trailers | 7/17/2015 | 7/23/2015 | 6 | | \$22,749 |
| 039.00 | 032.00 | Irwindale Kiosk Foundation | 9/15/2015 | 9/17/2015 | 2 | | \$14,190 |
| 040.00 | 019.01 | Artwork Installation | 9/17/2015 | 9/22/2015 | 5 | | \$37,359 |
| Subtotal: | | | | | | | \$1,360,626 |
| Subtotal: | | | | | | | \$1,360,626 |
| Total: | | | | | | | \$1,360,626 |



Change Management Log

Date: 10/9/2015

Page: 2 of 2

Project: C1150 Parking - Webcor Contract #: C1150

Open PCOs

| PCO Number | Title |
|------------|-------------------------------------|
| OPEN | |
| 013.00 | Primrose Avenue cul-de-sac Deletion |
| 014.00 | Delete Azusa-Alameda Enhancements |
| 020.00 | Azusa-Citrus Roadway |
| 021.00 | Trailblazing Signs |

Open RFC Notices

| Number | Title |
|--------|--------------------------------|
| 033.00 | Station Dedication Betterments |



AZUSA TO MONTCLAIR SEGMENT

ACTIVITIES COMPLETED THIS PERIOD

Authority and City staff continued to hold coordination meetings to discuss the project. The Authority has been meeting with the cities bi-monthly to discuss the terms of the Master Cooperative Agreement (MCA). The MCA has been executed by all cities except for Pomona. The Authority and Pomona are working together to finalize the MCA and expect to have an agreement executed in October.

This period, Authority staff worked on the following technical elements of the project:

- Continued advancement of the plan and profile drawings
- Continued right-of-way survey and drawings
- Continued geotechnical work
- Continued surveying work
- Continued conceptual design of the parking facilities
- Began environmental site assessment investigations

KEY FUTURE ACTIVITIES

The advanced conceptual engineering process is an 18-month process. Upon completion, the Azusa to Montclair segment will be ready for a design-build procurement. Upcoming activities include continuing to attend coordination meetings with each corridor city, finalizing the city MCAs, development of the ROW drawing work, refinement of the alignment, completing the SDAR, and completing the geotechnical investigations.

Federal Transit Administration (FTA)

The Metro Board of Directors excluded the Gold Line from seeking federal New Starts funding. The Authority will work together with Metro along with the Congressional delegation to seek funding to construct the extension following completion of the environmental review.



PHASE 2 FOOTHILL EXTENSION FINANCIAL STATUS

Project Operating Budget Summary in Millions of Dollars

September 30, 2015

| | (a) | (b) | (c=a-b) | (d) |
|---|-----------------------|-------------------------------------|-----------------------------|----------------------------------|
| FINANCIAL PLAN | Current Budget | Funding Committed to Project | Uncommitted Funds | Revenues Received |
| SCAG | 1.0 | 0.9 | 0.1 | 0.9 |
| Interest Income | 2.0 | 2.0 | - | 2.0 |
| Bridge Replacement | 13.9 | 13.9 | - | 13.9 |
| Phase I Carryover | 4.0 | 4.0 | - | 4.0 |
| Maintenance and Operations Facility | - | - | - | - |
| Cities | 11.0 | - | 11.0 | - |
| Measure R - Pasadena to Azusa | 810.5 | 777.0 | 33.5 | 617.5 |
| Measure R - Azusa to Montclair | - | - | - | - |
| SANBAG | 55.2 | 1.5 | 53.7 | 1.5 |
| Federal TCSP | 2.9 | 2.9 | - | 2.9 |
| Federal Bus Intermodal Plan | 9.0 | 9.0 | - | 5.8 |
| Federal New Starts 2004 MTA Passthrough | 4.0 | 4.0 | - | 4.0 |
| Federal New Starts 2005 MTA Passthrough | 0.5 | 0.5 | - | 0.5 |
| Federal New Starts 2006 Corridor Study | 2.5 | 2.5 | - | 2.5 |
| Federal/Other | 1,033.5 | - | 1,033.5 | - |
| Total Revenues | 1,950.0 | 818.2 | 1,131.8 | 655.5 |
| | | | | |
| | (a) | (b) | (c) | (d=a-b) |
| | Current Budget | Current Obligation | Current Expenditures | Current Available Balance |
| EXPENSES | | | | |
| Program Management and Administration | 108.9 | 108.9 | 104.6 | - |
| Master Cooperative Agreements | 11.0 | 3.7 | 3.3 | 7.7 |
| Real Estate including ROW Acq | 21.0 | 21.0 | 20.0 | - |
| Special Programs | 0.3 | - | - | 0.3 |
| Procurement/Vehicles | 60.0 | - | - | 60.0 |
| Maintenance and Operations Facility Land | 22.0 | 22.0 | 22.0 | - |
| Construction - IFS | 19.8 | 19.8 | 19.8 | - |
| Construction - Pasadena to Azusa segment | 328.9 | 328.9 | 326.3 | - |
| Construction - Azusa to Montclair segment | 1,181.0 | - | - | 1,181.0 |
| Construction - M&O | 47.0 | 47.0 | 41.3 | - |
| Construction - Parking Structures | 44.2 | 44.2 | 44.2 | - |
| MTA Project Costs | 64.0 | 64.0 | 14.3 | - |
| Contingency | 27.4 | - | - | 27.4 |
| Project Reserve | 14.5 | - | - | 14.5 |
| Total Project | 1,950.0 | 659.5 | 595.8 | 1,290.5 |
| | | | | |