

Los Angeles County
Metropolitan Transportation Authority

Metro Division 13 Quarterly Project Status Report



Metro®

01083116 © 2012 LACMTA

METRO DIVISION 13 PROJECT

QUARTERLY PROJECT STATUS REPORT

THE PREPARATION OF THIS DOCUMENT HAS BEEN FINANCED IN PART THROUGH A GRANT FROM THE U. S. DEPARTMENT OF TRANSPORTATION, FEDERAL TRANSIT ADMINISTRATION (FTA).

SEPTEMBER 2015

TABLE OF CONTENTS


	Page No.
Project Summary.....	1
Project Overview & Status.....	2
Management Issues.....	3-6
Project Status	
• Project Scope.....	7-10
• Schedule	
○ Key Milestones Six-Month Lookahead	11
○ Project Summary Schedule	12
○ Critical Path Narrative.....	13
• Project Cost Status.....	14-15
• Financial Grant Status.....	16
• Staffing.....	17
• Environmental.....	18
• Quality Assurance.....	19
• Safety.....	20
• Third Party.....	21
Contract Status.....	22-23
Construction Photographs.....	24-34
Chronology of Events.....	35-46
Appendices.....	47-50

PROJECT SUMMARY

METRO DIVISION 13

Bus Maintenance and CNG Fueling Facility

As of September 2015

LOCATION: Los Angeles		CONSTRUCTION MANAGEMENT CONSULTANT: MARRS																																									
DESIGN CONSULTANT: MDG		CONTRACTOR: McCarthy																																									
PHOTO Division 13 CNG Fueling Facility Pumps		WORK COMPLETED PAST THREE MONTHS																																									
		<ul style="list-style-type: none"> Completed installation of plants on vegetated roof Building A Obtained Fire Marshall approval to place fluids in lube AS tanks Continue testing fire life safety systems through buildings Completed exterior landscaping of project site Continue to train Metro personnel on new equipment installation Completed the testing of the Bus Wash in Building B Completed architechnical concrete SOG in SW plaza area Completed installation of permanent maintenance equipment Completed the testing of CNG fuel facility by fueling Metro buses Completed the test and balance Exhaust Fans Bld B Lower Level Issued certificate of Substantial Completion for CNG Fuel Facility 																																									
EXPENDITURE STATUS (\$ In Millions)		SCHEDULE ASSESSMENT																																									
ACTIVITIES	CURRENT BUDGET	EXPENDED AMOUNT	PERCENT EXPENDED																																								
DESIGN	6.593	6.593	100.0%																																								
RIGHT-OF-WAY	0	0	n/a																																								
CONSTRUCTION	88.83	84.84	95.5%																																								
OTHER	24.92	21.79	87.4%																																								
TOTAL	120.34	113.22	94.1%																																								
Expenses as of 9/30/2015		<table border="1"> <tr> <td>MAJOR SCHEDULE ACTIVITIES</td> <td>PRIOR PLAN</td> <td>CURRENT PLAN</td> <td>VARIANCE (WEEKS)</td> </tr> <tr> <td colspan="4">Environmental</td> </tr> <tr> <td>Categorical Exemption</td> <td>Dec-09 A</td> <td>Dec-09 A</td> <td>Complete</td> </tr> <tr> <td colspan="4">Design</td> </tr> <tr> <td>Final Design</td> <td>Oct-09 A</td> <td>Oct-09 A</td> <td>Complete</td> </tr> <tr> <td colspan="4">Right-of-Way</td> </tr> <tr> <td>Not Applicable</td> <td>n/a</td> <td>n/a</td> <td>n/a</td> </tr> <tr> <td colspan="4">Construction</td> </tr> <tr> <td>Notice to Proceed</td> <td>Jul-12 A</td> <td>Jul-12 A</td> <td>Complete</td> </tr> <tr> <td>Construction Complete</td> <td>Oct-15</td> <td>Dec-15</td> <td></td> </tr> </table>		MAJOR SCHEDULE ACTIVITIES	PRIOR PLAN	CURRENT PLAN	VARIANCE (WEEKS)	Environmental				Categorical Exemption	Dec-09 A	Dec-09 A	Complete	Design				Final Design	Oct-09 A	Oct-09 A	Complete	Right-of-Way				Not Applicable	n/a	n/a	n/a	Construction				Notice to Proceed	Jul-12 A	Jul-12 A	Complete	Construction Complete	Oct-15	Dec-15	
MAJOR SCHEDULE ACTIVITIES	PRIOR PLAN	CURRENT PLAN	VARIANCE (WEEKS)																																								
Environmental																																											
Categorical Exemption	Dec-09 A	Dec-09 A	Complete																																								
Design																																											
Final Design	Oct-09 A	Oct-09 A	Complete																																								
Right-of-Way																																											
Not Applicable	n/a	n/a	n/a																																								
Construction																																											
Notice to Proceed	Jul-12 A	Jul-12 A	Complete																																								
Construction Complete	Oct-15	Dec-15																																									
AREAS OF CONCERN		CRITICAL ACTIVITIES / 3 MONTH LOOK AHEAD																																									
<ul style="list-style-type: none"> Test and balance HVAC Transporation Building A Lighting levels in lower level of parking garage Bld B Procure and install revised HVAC Supply & Exhaust Fans Bld A Finish of concrete SOG lower level Building B Garage Approval of Fire Marshall to accept MEP systems 		<ul style="list-style-type: none"> Delivery and installation of owner supplied furniture Grind & overlay AC pavement plus stripping of Cesa Chavez Ave by City Punch list entire project after Substantial Completion Procure & install revised parts for supply and exhaust Fans Building A Complete Functional Performance Testing of HVAC Systems Complete permanent stripping/loops on Cesar & Vignes Streets Have Fire Marshall approve occupancy for Facility Issue certificate of Substantial Compeltion to General Contractor Complete installaion of the communication/ ITS systems by Metro Commission photovoltaic panels Issue certificate for Acceptance of CNG Fuel Facility System Complete the Structural repairs for PT concrete Issue certicates for Acceptance of Facility 																																									
ROW ACQUISITION	PLAN	ACQUIRED	REMAINING																																								
PERMANENT PARCELS	0	n/a	0																																								
TEMPORARY PARCELS	0	n/a	0																																								
TOTAL PARCELS	0	n/a	0																																								

PROJECT OVERVIEW & STATUS

The Division 13 Bus Maintenance and Operations facility is a bus maintenance, operations, and service facility located in downtown Los Angeles, California. The project is to be constructed on existing LACMTA properties located at the northeast corner of East Cesar Chavez Avenue and Vignes Street. The project delivery method is Design/Bid/Build. The facility is designed to accommodate a fleet of CNG buses and consists of a multi-level structured parking garage, a maintenance building, bus fueling, bus washing, chassis wash and non-revenue vehicle washing, non-revenue vehicle fueling, and maintenance and transportation offices and support areas.

Division 13 strives to set an example of sustainable design (LEED Gold goal) and the responsible use of natural resources. Many of the materials specified in the construction of this project are regionally sourced and/or have a high recycled content. Attention has been paid to the use of potable water with an exemplary system of storm water reclamation and reuse for bus operations and washing, and low maintenance native vegetation. Storm water run-off and the urban heat island effect are also addressed by a demonstration green roof on the Transportation Building.

Service and vehicle equipment include two and three-post in-ground lifts with modern, computer controlled automated adjustment, a bus wash system utilizing reclaimed storm water, non-revenue vehicle wash systems utilizing 100% recycled water, three-axis lift systems for accessing roof mounted equipment on buses, mobile work platforms at lower level work areas, high-density palletized stacking systems, carousel and vertical retrieval modules for parts.

Division 13 is 99% complete and project commitments and expenditures through September 2015 indicate that the current budget may require increasing contract modification authority for the next reporting period. However, the contract project completion was scheduled for July 24, 2015. Metro continues to work with the project team to discuss schedule critical path and review potential schedule mitigation opportunities as well as concurrent delays available to the project to reduce impacts to the project budget. The substantial completion date remains November 2, 2015 and Metro Bus Operations are working diligently to move into Division 13 at the earliest available date acceptable to all parties without impacting final completion and activating Division 13 in January 2016.

MANAGEMENT ISSUES

Concern No. 1: Project Schedule Re-assessment

Status/Action The August 2013 Schedule update had 75 working days of negative float. The Contractor has provided written Time Impact Analysis (TIAs) illustrating the impact of the delays on the Critical Path utilizing the current CPM Schedule and a separate fragnets showing Contractor's plan to mitigate various issues. Metro issued modifications to extend the contract completion date.

Concern No. 2: Project Cost Re-assessment

Status/Action Professional Services costs are being reassessed, especially those related to design cost.

Concern No. 3: Soil Export and Import Issues

Status/Action Over excavation and poor soils as directed by Project Geotechnical Engineer resulted in a significant and unanticipated export of Southern California Gas contaminated soil. Project has to import additional soils to be used as structural backfill throughout the site.

Concern No. 4: CNG Contractor Coordination

Status/Action With Metro Board approval, Metro recently awarded Division 13 CNG Facility's design and construction to Clean Energy. Metro continues to coordinate CNG layout and construction with the Division 13 Contractor (McCarthy).

Concern No. 5: Central Maintenance Facility Coordination

Status/Action Metro continues to coordinate work within the existing CMF Building 1, including new equipment warranties for the Radiator and Welding Shops.

Concern No. 6: Time Impact Analysis

Status/Action The contractor has submitted various TIAs in order to determine the total time impacts incurred to the Contract Milestone as a result of Concerns 2 and 5 related to unforeseen sewer obstructions at the intersections of Vignes Street and Cesar Chavez Avenue as well as time impacts due to importing of clean soil for backfill. Metro has issued modifications extending the completion date.

MANAGEMENT ISSUES (Continued)

Concern No. 7: Direct Cost Impacts

Status/Action McCarthy has submitted Metro reviewed and both parties settled the Direct Cost Impacts related to McCarthy's concrete operations due to installation and schedule impacts from the sewer manholes on Vignes Street.

Concern No. 8: Contractual Issues

Status/Action Metro has issued directives and unilateral change orders to the contractor and in return the contractor has issued notices of intent to claim as well as claims on design and construction related issues. In addition, design errors and omissions are above the typical industry standard.

Concern No. 9: Partial Shoring Failure During Elevated Roof Deck #14 Concrete Pour

Status/Action Contractor submitted investigation, demolition and remediation plans as well as safety and quality control protocol to restart all elevated concrete deck pours. Contractor provided a report that evaluated damage to permanent structure. Metro accepted their remedial plans and allowed contractor to re-start roof deck concrete pours. Contractor re-sequenced the work. The shoring failure caused a project delay completion from December 2014 to May 2015. Metro will have contractor perform a load test on Deck Pour #2 that concrete and shoring collapsed onto.

Concern No. 10: Permanent Electrical Power

Status/Action Metro continues to work with Department of Water and Power for new permanent electrical power service and not impact the project schedule.

Concern No. 11: ITS Infrastructure

Status/Action Numerous Project Bulletins were issued for completing the ITS Infrastructure, including: a close circuit television (CCTV) system, security access control system, Local Area Network, M3 kiosks, desktop computer, copiers, printers, smart-boards and the installation of these items in order to enable the individuals working in Division 13 to communicate across the Agency on the enterprise network. Staff will be requesting quotes from vendors for the Procurement and awarding a purchase order.

MANAGEMENT ISSUES (Continued)

Concern No. 12: Public Art Component

Status/Action Metro continues to work with the contractor and its subcontractors on the lighting design and engineering for the Division 13 Lantern, in order to not impact the fabrication, delivery and erection of the artwork's structural steel.

Concern No. 13: Installation of Garage Equipment

Status/Action Metro is coordinating with the Division 13 and Metro's Revenue Department's contractors for a complete and operational garage equipment system, including wireless access points, vaults, probes, bins, garage computer with appropriate software and security cameras.

Concern No. 14: Contract Close Out

Status/Action Metro is working with contractor to coordinate process and procedures to close out construction contract, including punch list procedure.

Concern No. 15: Division 13 Activation Plan

Status/Action The project team is coordinating with Metro Operations, Maintenance, Transportation, ITS, Service Development, TAP and Facility Maintenance departments to develop a comprehensive activation plan based on the project's substantial completion date.

Concern 16: Division 13 Commissioning

Status/Action Metro is initiating commissioning services to ensure building systems function within the optimal ranges as designed, developing pre-functional checklists, submittal reviews and functional performance testing for each active energy system.

Concern 17: Division 13 Test and Balance

Status/Action Metro has initiated testing and balancing related to all mechanical systems at Division 13. Most deficiencies found would need to be adjusted as required to achieve optimum performance of the Division 13 mechanical equipment prior to substantial completion.

MANAGEMENT ISSUES (Continued)

Concern 18: **FFE Installation and Coordination**

Status/Action *Metro is coordinating with the affected parties to install all FFE, including data lacing and hardwire electrical connections, prior to Substantial Completion. The delayed FFE installation has resulted in monthly storage charges to the project.*

Concern 19: **Substantial Completion**

Status/Action *Metro is working with all involved parties to issue a Certificate of Substantial Completion, in accordance with the contract, on November 2, 2015.*

Concern 20: **Division 13 Punch List**

Status/Action *Metro is coordinating Punch List requirements and procedure per contract specifications with the Designer- and Engineer- of Record and the contractor for Metro to initiate Punch List next reporting period.*

Concern 21: **Division 13 Contract Modifications**

Status/Action *Metro is working diligently with the contractor to fact-find and process merited changed work contract modifications by the end of the next reporting period. However, due to the significant number of remaining contract modifications these may not be processed by Final Completion.*

Concern 22: **Division 13 Errors & Omissions**

Status/Action *Metro is evaluating an E&O claim against the design contractor and its insurers to recover all E&O related issues, including damages for delays as part of the E&O claim.*

PROJECT SCOPE

PROJECT SIZE:

Site Area:

8.25 Acres (Division 13 only) / 10.58 Acres (including the entire site area)

Garage and Bus Fueling/Washing:

442,655 sf (~145,000 sf on each of 3 floors; lower level: employee & visitor parking; main level: bus parking, fuel & wash facilities; upper level: bus parking)

Maintenance:

71,000 sf (~7,800 sf – lower level; ~54,000 sf – main level; ~9,200 sf mezzanine level)

Operations/Transportation Building:

21,000 sf (~5,500 sf – lower level; ~9,000 sf – main level; ~6,500 sf – level two)

Bus Parking:

200 equivalent bus parking spaces

Employee Parking:

397 Spaces

FEDERAL GRANTS AWARDED TO PROJECT:

\$47,750,000 State of Good Repair Grant

\$5,500,000 Clean Fuels Grant

PROJECT BACKGROUND:

Public and infrastructure projects represent a commitment by government to the people they represent. The LA Metro Division 13 project is an example of this commitment. Its high-quality design will convey an element of respect to both the citizens that engage public transportation during their daily routine, and to those the agency employs to operate within the facility. As an efficient and highly functional facility, Division 13 is designed to realize operational savings while being a responsible, sustainable and aesthetically pleasing addition to the community.

- First new maintenance and operation facility to be commissioned by Metro in over 27 years with the goal of providing better service for LA residents
- Designed to optimize Metro's bus transit service throughout Central Los Angeles and the surrounding area
- Division 13's prominent siting will alter the urban landscape by replacing an inefficient surface parking lot with a landmark architectural icon for the LA community

PROJECT SCOPE (Continued)

- The LA Metro Division 13 project:
 - Includes a maintenance facility with 19 service bays for the operation and maintenance of Metro's fleet
 - Can accommodate up to 200 CNG standard sized buses
 - Is designed to handle 60' long articulated buses
 - Provides a two story bus parking garage with fuel and wash facilities that can park and service 200 standard sized CNG buses daily and a Fleet Operations and Transportation Building for 329 employees
 - Will also accommodate 41 non-revenue vehicles and employee parking for 397

- Sustainable design features:
 - Site and building shade structures
 - Natural ventilation
 - Glare and heat gain reduction glazing
 - Daylighting to all major work areas
 - 275,000 gallon underground storm water retention tank
 - Green Roof garden, accessible to Metro employees
 - Cool Roof to reduce Heat Island Effect
 - Water efficient landscaping
 - Registered with the USGBC as Pursuing LEED-NC Gold

Division 13's primary architectural concept addresses the two major street facades of the facility with one palette of materials reflecting two separate conditions of movement. The Cesar Chavez elevation uses architectural panels to screen bus parking and circulation ramps, reflecting the high speed automobile activity that defines western American cities. At night the façade's focus shifts to highlight the functional movement of buses. The Vignes St. elevation addresses a slower, pedestrian scale appropriate to its urban setting and will encourage the public to utilize the urban plaza adjacent to the intersection of the two streets. The transportation building resides in front of the two story garage and is placed adjacent to the street to accommodate a need to screen operational functions while promoting a walkable, urban environment.

PARKING STRUCTURE

The parking structure will be in 3 levels as explained below.

- The Ground Level Parking will accommodate fare retrieval, bus fueling, and wash activities with enough storage area to accommodate 52 standard buses. The ground floor of the parking structure will be dedicated to bus maintenance activities including tire and repair bays, a brake shop and a materials handling area. An entry lobby, providing elevator and stairway access to each floor of the proposed parking structure, will be located at the northeast and northwest portion of the parking structure.

PROJECT SCOPE (Continued)

- The 2nd level Parking will provide parking for approximately 108 buses and 40 layover spaces. This level will also provide office spaces, break rooms, training room, rest rooms and conference room for Metro Staff.
- The 3rd level Parking will include 397 employee and visitor parking spaces.

BUS MAINTENANCE FACILITY

The proposed parking structure will be flanked by two administrative uses, on the west end immediately north of the Vignes Street/Cesar E. Chavez Avenue intersection, by the two-story administration/office building, while the maintenance building will be located on the east end of the parking structure. The ground floor of the operations building will include dispatch offices, a kitchen and employee lounges, while the second floor will be comprised primarily of office uses. The ground floor of the maintenance building will include general maintenance uses such as tire bays and repair shops as well as a welding and materials handling area. The second floor will include maintenance and transportation offices, a training room and other office-related uses.

BAUCHET PARKING STRUCTURE

A three-story parking structure has been constructed at the northern portion of the project site. This structure contains 427 parking spaces. The structure will provide approximately 50 employee parking spaces for the Bauchet Street Storage and Facilities' Maintenance Structure and replace the Central Maintenance Facility (CMF) Lot A surface parking lot that has been removed as part of the project. Access to this structure is provided via an entrance located on Macy Street, east of Bauchet Street. Additional egress only will be provided via an egress road located on CMF property that will exit on Cesar Chavez Avenue or Keller Street.

PROJECT SCOPE (Continued)

PROJECT LOCATION

The project site is situated in the industrial area northeast of Downtown Los Angeles.

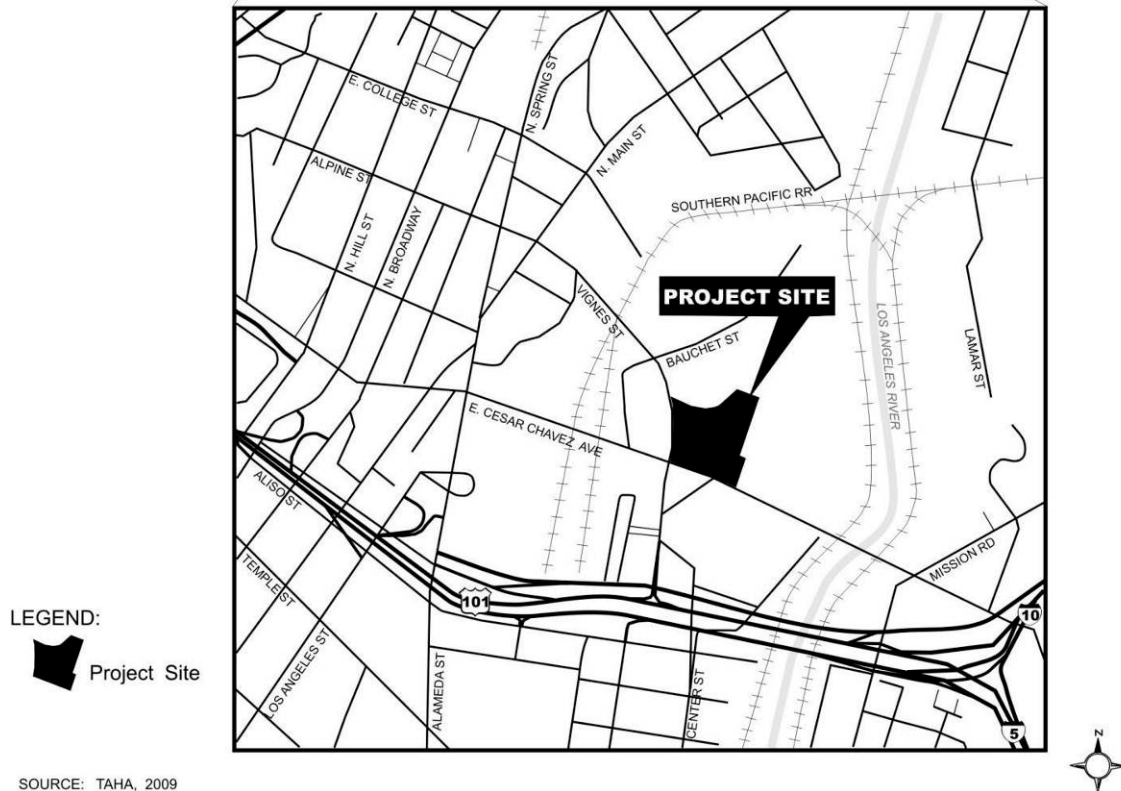


Figure 1 – Location Map

Regional access to the project site is provided by U.S. Highway 101/Interstate 5 (Hollywood Freeway/Santa Ana Freeway), which is less than 0.5 miles south of the project site, and Interstate 10 (San Bernardino Freeway), which is approximately 0.5 miles southeast of the project site.

The project site is located on the northeast corner at the intersection of Vignes St. and Cesar E. Chavez Ave. It is bound by the Twin Towers Correctional Facility and Bauchet Street to the north; Vignes St. to the west; the Metro Support Services Center (MSSC), the Burlington Northern Santa Fe Railroad (BNSF) intermodal yard, and the Los Angeles River to the east and the C. Erwin Piper Technical Center and Cesar E. Chavez Ave. to the south (Figure 1).

KEY MILESTONE SCHEDULE SIX-MONTH LOOKAHEAD

	Milestone Date	Oct-15	Nov-15	Dec-15	Jan-16	Feb-16	Mar-16
HVAC Air Balance and Test at Building A	10/15/2015*	○					
Final Inspection of Doors and Hardware	10/15/2015*	○					
Complete Final Inspection at Building A, B & C	8/11/2015*	○					
Complete Final Report for HVAC Air Balance Report	11/6/2015*		○				
McCarthy Substantial Completion	11/20/2015*		○				
Submit Close out Documents and Punch List Corrections for Building A	11/20/2015*		○				
Submit Close out Documents and Punch List Corrections for Building B & C	12/9/2015*			○			
Complete Systems Commissioning	12/23/2015*			○			
Leeds Submittal	12/28/2015			○			
Complete Final Punch List Corrections	12/28/2015*			○			
Contractor's Final Completion Date	12/28/2015*			○			



Metro

Metro Milestone



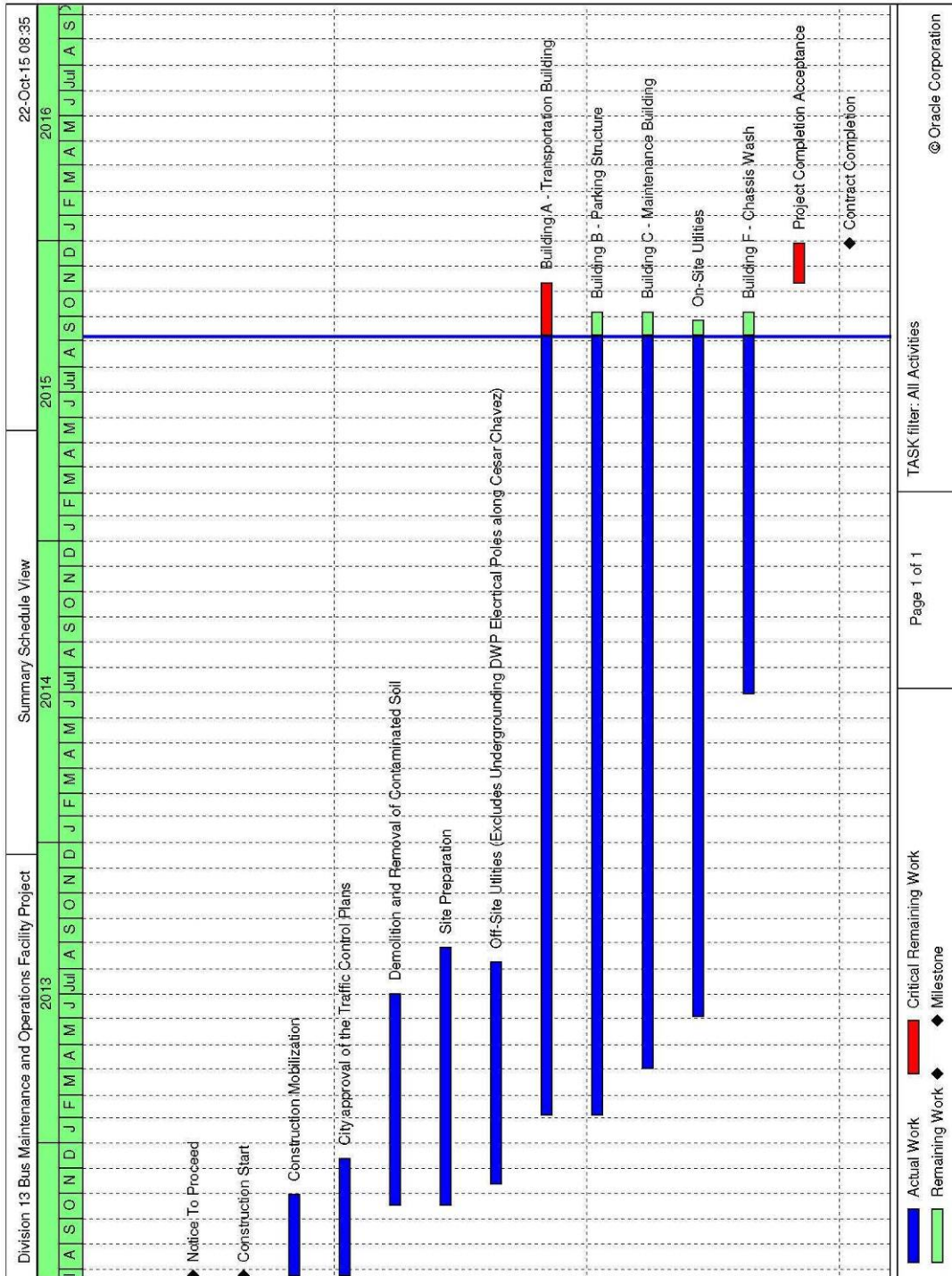
Contractor



Third Parties Approval

* New Date

PROJECT SUMMARY SCHEDULE



CRITICAL PATH NARRATIVE

Based on the current summary schedule, the primary critical path runs through Building A – Transportation Building and Project Completion and Acceptance.

PROJECT COST STATUS

FEDERAL PROJECT # CA-04-0190-00, PROJECT 202001
 ENGINEERING CAPITAL IMPROVEMENT PROJECTS DIVISION
 METRO TRANSIT PROJECT DELIVERY DEPARTMENT
 COMBINED COST REPORT BY ELEMENT
 PERIOD ENDING: September 30, 2015
 DOLLARS

ELEMENT CODE	ELEMENT DESCRIPTION	ORIGINAL BUDGET	CURRENT BUDGET		COMMITMENTS		EXPENDITURES		CURRENT FORECAST		BUDGET / FORECAST VARIANCE
			PERIOD	TO DATE	PERIOD	TO DATE	PERIOD	TO DATE	PERIOD	TO DATE	
C	CONSTRUCTION - Division 13 Facility	70,947,000	-	82,412,000	2,982,000	80,622,000	1,230,000	78,220,000	302,000	82,900,000	488,000
C	CONSTRUCTION - CNG Facility	5,500,000	-	6,420,000	59,000	6,645,000	375,000	6,624,000	387,000	6,716,000	296,000
S	SPECIAL CONDITIONS	-	-	7,888,000	-	7,663,000	28,000	6,854,000	(236,000)	7,484,000	(404,000)
R	RIGHT-OF-WAY	-	-	-	-	-	-	-	-	-	-
P	PROFESSIONAL SERVICES	13,425,000	-	22,706,000	926,000	22,147,000	1,012,000	21,521,000	572,000	23,242,000	536,000
PC	PROJECT CONTINGENCY	5,128,000	-	916,000	-	-	-	-	-	-	(916,000)
TOTAL PROJECT		95,000,000	-	120,342,000	3,967,000	117,077,000	2,645,000	113,219,000	1,025,000	120,342,000	-

NOTE: EXPENDITURES ARE CUMULATIVE THROUGH September 30, 2015

PROJECT COST ANALYSIS

Original and Current Budget

The original Life of Project (LOP) budget of \$95,000,000 was established in September 2008 when the project was in preliminary design. In April 2013, the Metro Board increased the Project 202001 LOP by \$9,200,000 from \$95,000,000 to \$104,200,000 and the Current Budget was revised to match the LOP increase. In October 2014, the Metro Board increased the LOP budget from \$104,200,000 to \$120,342,000, and the project budget was reallocated to match the forecasts for construction, professional services special conditions and to replenish contingency as indicated on Attachment C of the October 2014 Board Report. *The project budget established in October 2014 did not change for the period ending September 30, 2015.*

Current Forecast

The overall project forecast increased to \$120,342,000 this reporting period. The overall Construction forecast increased \$689,000 driven primarily by new cost issues related to the Division 13 contract and the CNG facility. Most of the new cost issues submitted are yet to be reviewed for merit and negotiated. Division 13 cost issues were created by McCarthy in response to Metro-issued Contract Officer's Directive (COD) and for contractor-submitted Change Proposal Requests (CPRs) submitted by McCarthy for work they deemed to be a change in the scope. The forecast for Special Conditions decreased by \$236,000 as the City of Los Angeles invoiced Metro for only a fraction of the value of the task orders set up for FY15. The forecast for Professional Services increased by \$572,000 this quarter primarily because of the need to extend the professional services into calendar year 2016 for contract close-out, and because of the legal counsel staff retained to pursue E&O claims against the

PROJECT COST ANALYSIS (Continued)

designer of record. The contingency forecasted last quarter no longer exists due to the larger forecasts for Construction and Professional Services.

Commitments

Commitments at the end of September 2015 were \$117.08 million, an increase of \$3.97 million this quarter. About \$3 million of the increase was due to previously forecasted construction change notices now encumbered as executed contract modifications. An additional \$59,000 was for third-party work. The remaining \$926,000 in new commitments this period was for Professional Services, primarily CMC support, document control, Metro employees assigned to Division13, and legal counsel retained to address E&O concerns.

Expenditures

Through September 30, 2015, Metro has incurred 113.22 million in cumulative expenditures. Expenditures increased \$2.64 million this reporting period. Most of the expenditures, \$1.61 million, were payments for the construction contracts. An additional \$28,000 was spent on Special Conditions for expenses related to the Master Cooperative Agreements with the City of Los Angeles. Metro spent \$1.01 million this period on professional services for costs associated with in-house project administration, the construction management consultants, and construction support by the design consultants.

FINANCIAL/GRANT STATUS

SEPTEMBER 2015

STATUS OF FUNDS BY SOURCE

\$ in millions

SOURCE	(A)	(B)	(C)	(D)	(D/B)	(E)	(E/B)	(F)	(F/B)
	ORIGINAL BUDGET	TOTAL FUNDS ANTICIPATED	TOTAL FUNDS AVAILABLE	COMMITMENTS \$	%	EXPENDITURES \$	%	BILLED to FUNDING SOURCE \$	%
STATE PROP 1B - PTMISEA*	85.0	52.8	52.8	52.8	100%	52.8	100%	49.7	94%
TDA ARTICLE 4	10.0	14.3	14.3	11.0	77%	7.5	53%	0.0	0%
FEDERAL - 5309	0.0	47.8	47.8	47.8	100%	47.8	100%	47.8	100%
FEDERAL - 5308	0.0	5.5	5.5	5.5	100%	5.2	94%	5.2	94%
PROP C 40% RAIL CAPITAL	0.0	0.0	0.0	0.0	100%	0.0	100%	0.0	100%
TOTAL	95.0	120.3	120.3	117.1	97.3%	113.2	94.1%	102.6	85.3%

* PTMISEA: Public Transportation Modernization and Improvement Surface Enhancement Account

NOTE: Expenditures are cumulative through September 2015.

STATUS OF FUNDS ANTICIPATED

STATE PROP 1B PTMISEA: State Proposition 1B Bond sales provided \$31M to the project and the funds are available for drawdown. A grant allocation to Caltrans for the remaining \$5.6M was requested in March 2013. Allocation request was approved in January 2014. Funds are available for drawdown. In November 2014, \$16.1 was transferred from the bus procurement project to the Division 13 Project. Funds are available for drawdown.

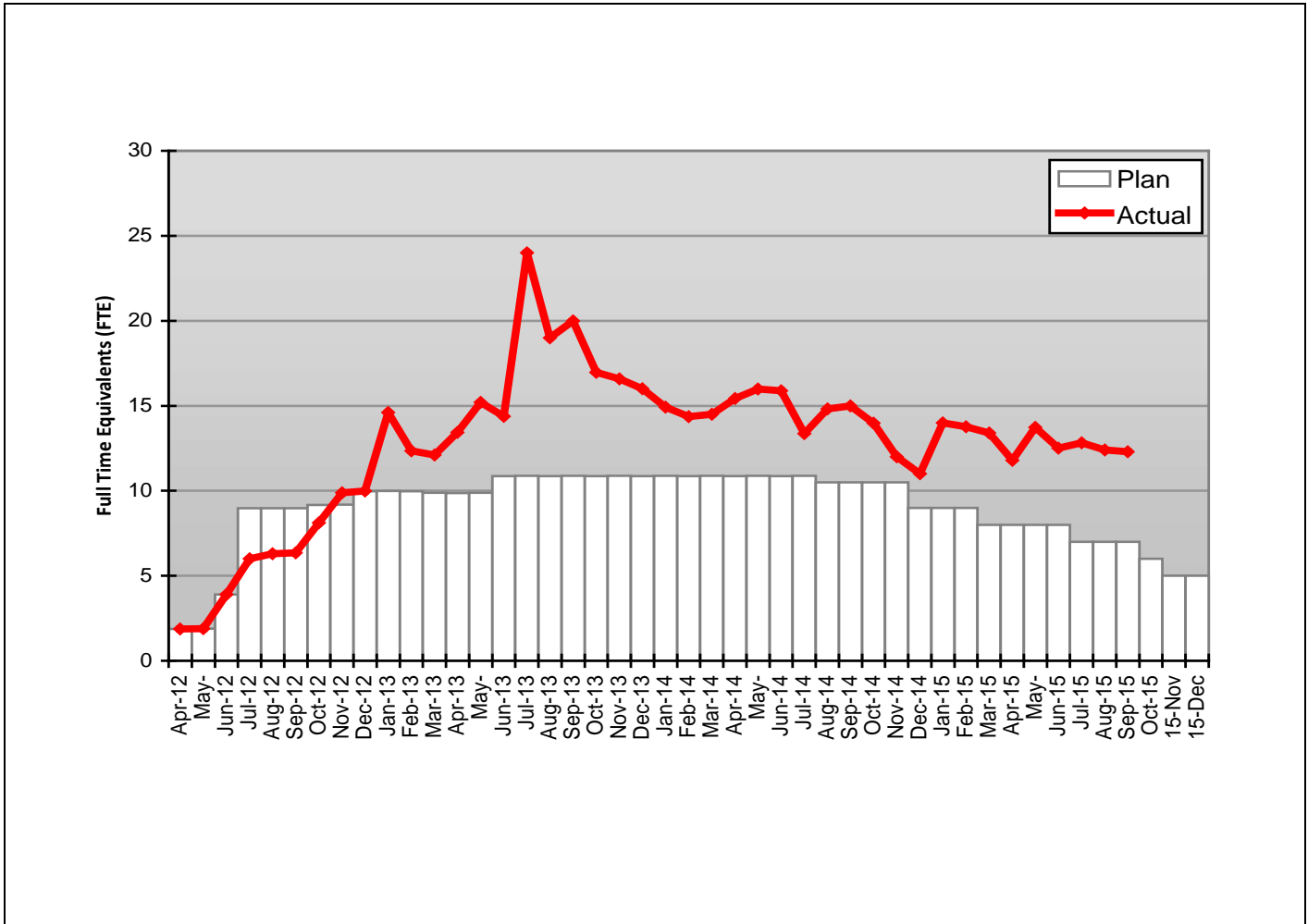
TDA ARTICLE 4: In April 2013, the Metro Board approved an increase of \$9.2M for a revised funding of \$14.3M. The FY15 revised funding plan includes \$14.3M of TDA Article 4.

FEDERAL 5309: \$47.8M under FTA grant CA-04-0190 is available for drawdown for the construction of Division 13 Bus Operations and Maintenance Facility.

FEDERAL 5308: \$5.5M under FTA grant CA-58-0006 is available for drawdown for the construction of Division 13 CNG Fueling Facility.

STAFFING STATUS

Total Project Staffing – FTEs



Total Project Staffing

The changes to the staffing status are due to unanticipated number of Request-For-Information (RFIs), unanticipated number of Change Notices, changes to design, additional design need and construction delays. The indicated unanticipated work and delays increased the need for additional staffing to support the construction management.

ENVIRONMENTAL STATUS

Environmental Status since issuance of the FTA NEPA Categorical Exclusion:

- A NEPA CE was granted by the FTA on December 18, 2009.
- Lyon Street was vacated on November 18, 2009.
- A street tree removal permit was granted from the City of LA on May 19, 2011.
- All encountered contaminated wastes have been properly characterized and disposed of at permitted facilities.
- Metro Environmental Contractor removed existing clarifier on south side of existing Building 3 (Dec 2012).

The following IS/MND mitigation measures have been addressed and included in the Specification and/or Design drawings: AE 1, AE 2 (LEED requirements), AE3, CR4, N4, GS 1. The Aesthetics mitigation measures have been addressed as part of the LEED design process.

The following construction mitigation measures are being implemented as required: They are continually renewed and adjusted per changing site conditions: AQ1, AQ 2, AQ3, AQ4, AQ5, AQ6, AQ7, CR1, CR2, CR3, CR4, CR5, CR6, G52, HM1, HM2, HM3, N3.

- Regarding mitigation measures CR1 – CR6, Archaeological and Paleontology monitoring have been occurring since project excavation began. To date, 17 historic features have been uncovered and will be evaluated against Section 106 requirements. In addition, a prehistoric human bone was discovered and the LA County Coroner was notified. Consultation then ensued between the Native American Most Likely Descendent (MLD), Federal Transit Administration, State Historic Preservation Officer and Metro. Consultation and the resulting process are documented in a letter to SHPO dated May 20, 2013. Native American monitoring will continue through the remainder of the excavation per agreement with the MLD. Carbon dating of the human remains is completed and will be documented in the final Section 106 report. Main excavation is completed and only a small amount of follow up work completed in February 2015. Construction work continues, but remaining work is not expected to require monitoring. As agreed, archaeological and Native American monitoring will continue during ground disturbance that has the potential to encounter intact cultural or paleontological materials. *Completed review of the draft Archeological Findings Report which will be delivered to SHPPO repository and FTA when completed.* Regarding the noise mitigation measure (N1-N4), no noise complaints have been received to date. Continue with MLD monitoring throughout the remainder of project as necessary. *Prepared Notice of Termination (NOT) to file with the RWQCB for construction SWPPP.*

QUALITY ASSURANCE STATUS

C0974 Division 13 Maintenance & Operations Facility

- *A Metro-issued Nonconformance Report (NCR) addressed the Insufficient Lumen Output of Electric Light Fixtures. Various replacement Fixtures have been tried, with the Final Fixture to be selected in October 2015.*
- *A mock-up of the Roof Trench Drain Repair was demonstrated. Final repair work will be completed mid-October 2015.*
- *Thermal Imaging Test (for Leaks) of the Single-Ply Roofing System has been addressed. The actual Test will be conducted in October 2015*
- *Testing/Equipment System Commissioning and Staff Training started and will continue into October 2015.*
- *Readiness Review and Mock-up Meeting was held for Facility Striping. The work was completed.*
- *Began Punch List Inspections and will complete by the end of October 2015.*
- *Participated in weekly Project Status Meetings.*

SAFETY AND SECURITY STATUS

- *There were no recordable injuries on the Project during the quarter from July to September 2015.*
- Safety Staff participated in pre-activity (readiness review) meetings to ensure compliance with approved Work Plans and contract specifications.
- Monitoring construction activities during day shifts to ensure contractor compliance with contract specifications.
- Safety staff attended weekly Progress Meetings, Foreman's Weekly Safety Meetings and other project meetings to evaluate Contractors Safety Program compliance with contract requirements.
- Completed over the shoulder reviews with McCarthy Builders for Job Hazard Analysis and Construction Work Plans.
- Performed project wide safety walks with the Contractor and assisted with any safety concerns and corrective actions on these concerns.
- The project had decreased the work force as the project is nearing completion.
- McCarthy conducted new hire orientations for all new employees working on the site. It covers jobsite safety rules for McCarthy and Metro compliance regulations.
- *July - September: McCarthy Work Hours: 5,936*
- *July - September: Design and Metro Construction: 1,126*
- *Contractor – Project to Date Work Hours: 476,172*
- *Total Project to Date Work Hours (Contractor & Metro Staff): 555,143*
- Project to Date Recordable Injury Rate: 0.36 (each rate is per 200,000 work hours)
- Project to Date Total Time Away Injury Rate: 0.0 (Zero Time Away From Work Injuries)
- Project to Date Total Days Away Rate: 0.0 (Zero Days Away From Work)

THIRD PARTY AGREEMENT STATUS

Third Party	Type of Agreement	Forecast Execution Date	Required Need Date	Status/ Comments
City of Los Angeles	Master Cooperative Agreement	Completed	N/A	Executed
LADWP Power	Utility Cooperative Agreement	Completed	N/A	Executed
LADWP Water	Utility Cooperative Agreement	Completed	N/A	Executed
Verizon	Utility Cooperative Agreement	Completed	N/A	Executed
AT&T	Utility Cooperative Agreement	Completed	N/A	Executed
Southern California Gas Company	Utility Cooperative Agreement	Completed	N/A	Executed

CONTRACT STATUS

<p>Metro Division 13 Bus Maintenance and Operations Facility Project Contractor: McCarthy</p>	<p>Contract No.: C0974 Status as of: October 2, 2015</p>																																				
<p>Major work started/completed this period:</p> <ul style="list-style-type: none"> • Completed control hookup to motor starter Building 1. • Completed state elevator inspection at Trans. Building A. • Installed Bio Reactor system equipment at Level 1. • Completed installation of irrigation controls at Vegated Roof. • Completed installation of doors and hardware Level 1. • Completed installation of by-pass fan Level 2. • Completed testing for emergency power, fire alarm and CNG detection.. • Completed fabrication and painting at Parking Garage. • Completed installation of circuit breaker and conduits. • Completed assembly of fan and weld supports. • Completed installation of shoring at Level 1. • Completed mockup work for repair of trench drain at Roof. • Completed installation of hose /dispensers at Maint. Bldg. • Completed installation of signage and glazing surface films.. • Completed installation of motor starters for exhaust fans. • Completed Compressed Natural Gas detection. • Completed paint coating canopy structure at Chassis Wash. • Completed re-stripping at Cesar Chavez. • Completed removal of K-rail at Vignes Street. • Completed entrances on Vignes Street. • Completed installation of new traffic light mast arm.. • Completed landscaping in all areas at Chassis Wash. • Commenced punch lists and corrections at Building 1. • Installed piano hinged gates at Transportation Bldg. A.. • Performed structural concrete repairs at Parking Garage.. • Commenced striping at all areas at Maintenance Bldg. • Commenced ATF Tank relocations at Chassis Wash. <p>Areas of Concern:</p> <ul style="list-style-type: none"> • Communications Scope of Work, submittal review, WAP, cameras and furniture location. • Trench drain cracks at roof upper level Parking Garage. • Structural concrete cracks and spalling at Parking Garage. . • Interior Lighting fixtures in Parking Garage.. • Lower Level SOG finishes. • Test and balancing passes for HVAC System. 	<p>Major Activities (In Progress):</p> <ul style="list-style-type: none"> • Replacement of exhaust fans at lower level parking garage. • HVAC air balance of exhaust fans at lower level parking garage. • Installation of vegated roof at Building A. • Installation of racking system and mounted crane at Bldg. No. 1. • Installation of street lighting , signals , sidewalks at Cesar Chavez.. • Terminate electrical connections to equipment at Building 1. • Final connections for HVAC revised exhaust fans at Building B. • Complete ductwork on south half of Building B Level 1. • Install casework in break room and supervisors office. • Permanent power ready at Building B Level 1 electrical room. • Install parking controls equipment at Building B Lower Level. <p>Major Activities Next Period:</p> <ul style="list-style-type: none"> • Finish remaining HVAC air balance at Transportation Bldg.. • Procure and install fall protection system for Chassis Wash. • Expansion joint steel connection for sunscreen Transportation Bldg. • Start-up and inspection of Veeder Root Communication System.. • Installation of graphic annunciator panel for CNG detection. • Striping SOG at Lower Level Parking Garage. • Re-stripe at Cesar Chavez Avenue. • Concrete crack and spalling repairs at Parking Garage. • Completion of FA System Testing. • MEP System Testing and commissioning. • Start punch list and completion in Buildings and Facilities. 																																				
	<table border="1" style="width: 100%; border-collapse: collapse;"> <thead> <tr> <th></th> <th>Original Baseline</th> <th>Time Extension</th> <th>Current Contract</th> <th>Forecast Completion</th> <th>Variance Cur-Fcast</th> </tr> </thead> <tbody> <tr> <td>Commencement</td> <td style="text-align: center;">07/23/12</td> <td style="text-align: center;">0</td> <td style="text-align: center;">07/23/12</td> <td style="text-align: center;">07/23/12</td> <td style="text-align: center;">0</td> </tr> <tr> <td>Completion</td> <td style="text-align: center;">06/23/14</td> <td style="text-align: center;">207</td> <td style="text-align: center;">01/16/15</td> <td style="text-align: center;">12/28/15</td> <td style="text-align: center;">-346</td> </tr> <tr> <td>Punchlist Complete</td> <td style="text-align: center;">06/23/14</td> <td style="text-align: center;">207</td> <td style="text-align: center;">01/16/15</td> <td style="text-align: center;">12/28/15</td> <td style="text-align: center;">-346</td> </tr> <tr> <td>Final Acceptance</td> <td style="text-align: center;">06/23/14</td> <td style="text-align: center;">207</td> <td style="text-align: center;">01/16/15</td> <td style="text-align: center;">12/28/15</td> <td style="text-align: center;">-346</td> </tr> <tr> <td></td> <td></td> <td></td> <td></td> <td></td> <td></td> </tr> </tbody> </table>		Original Baseline	Time Extension	Current Contract	Forecast Completion	Variance Cur-Fcast	Commencement	07/23/12	0	07/23/12	07/23/12	0	Completion	06/23/14	207	01/16/15	12/28/15	-346	Punchlist Complete	06/23/14	207	01/16/15	12/28/15	-346	Final Acceptance	06/23/14	207	01/16/15	12/28/15	-346						
	Original Baseline	Time Extension	Current Contract	Forecast Completion	Variance Cur-Fcast																																
Commencement	07/23/12	0	07/23/12	07/23/12	0																																
Completion	06/23/14	207	01/16/15	12/28/15	-346																																
Punchlist Complete	06/23/14	207	01/16/15	12/28/15	-346																																
Final Acceptance	06/23/14	207	01/16/15	12/28/15	-346																																
<p>Schedule Summary:</p> <table style="width: 100%; border-collapse: collapse;"> <tr> <td style="width: 80%;">Notice of Award</td> <td style="text-align: right;">05/24/12</td> </tr> <tr> <td>Notice to Proceed</td> <td style="text-align: right;">07/23/12</td> </tr> <tr> <td>Original Contract Duration (CD*)</td> <td style="text-align: right;">700</td> </tr> <tr> <td>Approved Time Extensions (CD*)</td> <td style="text-align: right;">207</td> </tr> <tr> <td>Current Contract Duration (CD*)</td> <td style="text-align: right;">907</td> </tr> <tr> <td>Elapsed Time from NTP (CD*)</td> <td style="text-align: right;">1164</td> </tr> <tr> <td>Contract Elapsed Time Percent</td> <td style="text-align: right;">128.33%</td> </tr> </table>	Notice of Award	05/24/12	Notice to Proceed	07/23/12	Original Contract Duration (CD*)	700	Approved Time Extensions (CD*)	207	Current Contract Duration (CD*)	907	Elapsed Time from NTP (CD*)	1164	Contract Elapsed Time Percent	128.33%	<p>Cost Summary: \$ In 000's</p> <table style="width: 100%; border-collapse: collapse;"> <tr> <td style="width: 70%;">1. Award Value:</td> <td style="text-align: right;">73,364</td> </tr> <tr> <td>2. Executed Modifications:</td> <td style="text-align: right;">13,310</td> </tr> <tr> <td>3. Approved Change Orders:</td> <td style="text-align: right;">143</td> </tr> <tr> <td>4. Current Contract Value (1 + 2):</td> <td style="text-align: right;">86,675</td> </tr> <tr> <td>5. Incurred Cost:</td> <td style="text-align: right;">80,852</td> </tr> <tr> <td>6. Percent Incurred Cost:</td> <td style="text-align: right;">99.54%</td> </tr> </table>	1. Award Value:	73,364	2. Executed Modifications:	13,310	3. Approved Change Orders:	143	4. Current Contract Value (1 + 2):	86,675	5. Incurred Cost:	80,852	6. Percent Incurred Cost:	99.54%										
Notice of Award	05/24/12																																				
Notice to Proceed	07/23/12																																				
Original Contract Duration (CD*)	700																																				
Approved Time Extensions (CD*)	207																																				
Current Contract Duration (CD*)	907																																				
Elapsed Time from NTP (CD*)	1164																																				
Contract Elapsed Time Percent	128.33%																																				
1. Award Value:	73,364																																				
2. Executed Modifications:	13,310																																				
3. Approved Change Orders:	143																																				
4. Current Contract Value (1 + 2):	86,675																																				
5. Incurred Cost:	80,852																																				
6. Percent Incurred Cost:	99.54%																																				

* Calendar Days

CONTRACT STATUS

<p>Metro Division 13 Bus Maintenance and Operations CNG Facility Project Contractor: Clean Energy</p> <p>Major work started/completed this period:</p> <ul style="list-style-type: none"> • Final inspections of the system and equipment. • Performance testing of the CNG Fuel Facility and compressor units. • Start-up and commission of equipment. • Substantial completion of CNG Fueling Facility September 30, 2015. • Owner punch list. <p>Areas of Concern:</p> <ul style="list-style-type: none"> • None. 	<p>Contract No.: C0974</p> <p>Status as of: October 2, 2015</p> <p>Major Activities (In Progress):</p> <ul style="list-style-type: none"> • Punch list work and corrections. <p>Major Activities Next Period:</p> <ul style="list-style-type: none"> • Punch list work. • Training. • Final completion and project closeout. 																																				
<table border="1" style="width: 100%; border-collapse: collapse;"> <thead> <tr> <th></th> <th style="text-align: center;">Original Baseline</th> <th style="text-align: center;">Time Extension</th> <th style="text-align: center;">Current Contract</th> <th style="text-align: center;">Forecast Completion</th> <th style="text-align: center;">Variance Cur-Fcast</th> </tr> </thead> <tbody> <tr> <td>Commencement</td> <td style="text-align: center;">08/26/13</td> <td style="text-align: center;">0</td> <td style="text-align: center;">08/26/13</td> <td style="text-align: center;">08/26/13</td> <td style="text-align: center;">0</td> </tr> <tr> <td>Completion</td> <td style="text-align: center;">08/26/14</td> <td style="text-align: center;">302</td> <td style="text-align: center;">06/26/15</td> <td style="text-align: center;">11/30/15</td> <td style="text-align: center;">-157</td> </tr> <tr> <td>Punchlist Complete</td> <td style="text-align: center;">08/26/14</td> <td style="text-align: center;">302</td> <td style="text-align: center;">06/26/15</td> <td style="text-align: center;">11/30/15</td> <td style="text-align: center;">-157</td> </tr> <tr> <td>Final Acceptance</td> <td style="text-align: center;">08/26/14</td> <td style="text-align: center;">302</td> <td style="text-align: center;">06/26/15</td> <td style="text-align: center;">11/30/15</td> <td style="text-align: center;">-157</td> </tr> <tr> <td> </td> <td> </td> <td> </td> <td> </td> <td> </td> <td> </td> </tr> </tbody> </table>			Original Baseline	Time Extension	Current Contract	Forecast Completion	Variance Cur-Fcast	Commencement	08/26/13	0	08/26/13	08/26/13	0	Completion	08/26/14	302	06/26/15	11/30/15	-157	Punchlist Complete	08/26/14	302	06/26/15	11/30/15	-157	Final Acceptance	08/26/14	302	06/26/15	11/30/15	-157						
	Original Baseline	Time Extension	Current Contract	Forecast Completion	Variance Cur-Fcast																																
Commencement	08/26/13	0	08/26/13	08/26/13	0																																
Completion	08/26/14	302	06/26/15	11/30/15	-157																																
Punchlist Complete	08/26/14	302	06/26/15	11/30/15	-157																																
Final Acceptance	08/26/14	302	06/26/15	11/30/15	-157																																
<p>Schedule Summary:</p> <table style="width: 100%; border-collapse: collapse;"> <tr> <td style="width: 80%;">Notice of Award</td> <td style="text-align: right;">06/03/13</td> </tr> <tr> <td>Notice to Proceed</td> <td style="text-align: right;">08/26/13</td> </tr> <tr> <td>Original Contract Duration (CD*)</td> <td style="text-align: right;">365</td> </tr> <tr> <td>Approved Time Extensions (CD*)</td> <td style="text-align: right;">304</td> </tr> <tr> <td>Current Contract Duration (CD*)</td> <td style="text-align: right;">669</td> </tr> <tr> <td>Elapsed Time from NTP (CD*)</td> <td style="text-align: right;">826</td> </tr> <tr> <td>Contract Elapsed Time Percent</td> <td style="text-align: right;">123.46%</td> </tr> </table>	Notice of Award	06/03/13	Notice to Proceed	08/26/13	Original Contract Duration (CD*)	365	Approved Time Extensions (CD*)	304	Current Contract Duration (CD*)	669	Elapsed Time from NTP (CD*)	826	Contract Elapsed Time Percent	123.46%	<p>Cost Summary: \$ In 000's</p> <table style="width: 100%; border-collapse: collapse;"> <tr> <td style="width: 80%;">1. Award Value (Design Build):</td> <td style="text-align: right;">6,311</td> </tr> <tr> <td>2. Award Value (Ops and Maintenance):</td> <td style="text-align: right;">5,272</td> </tr> <tr> <td>2. Executed Modifications:</td> <td style="text-align: right;">1</td> </tr> <tr> <td>3. Approved Change Orders:</td> <td style="text-align: right;">1</td> </tr> <tr> <td>4. Current Contract Value (1 + 2):</td> <td style="text-align: right;">6,311</td> </tr> <tr> <td>5. Incurred Cost:</td> <td style="text-align: right;">5,606</td> </tr> <tr> <td>6. Percent Incurred Cost:</td> <td style="text-align: right;">88.83%</td> </tr> </table>	1. Award Value (Design Build):	6,311	2. Award Value (Ops and Maintenance):	5,272	2. Executed Modifications:	1	3. Approved Change Orders:	1	4. Current Contract Value (1 + 2):	6,311	5. Incurred Cost:	5,606	6. Percent Incurred Cost:	88.83%								
Notice of Award	06/03/13																																				
Notice to Proceed	08/26/13																																				
Original Contract Duration (CD*)	365																																				
Approved Time Extensions (CD*)	304																																				
Current Contract Duration (CD*)	669																																				
Elapsed Time from NTP (CD*)	826																																				
Contract Elapsed Time Percent	123.46%																																				
1. Award Value (Design Build):	6,311																																				
2. Award Value (Ops and Maintenance):	5,272																																				
2. Executed Modifications:	1																																				
3. Approved Change Orders:	1																																				
4. Current Contract Value (1 + 2):	6,311																																				
5. Incurred Cost:	5,606																																				
6. Percent Incurred Cost:	88.83%																																				

CONSTRUCTION PHOTOGRAPHS

FLY OVER JOBSITE PHOTOGRAPH (7-2-2015)



FLY OVER JOBSITE PHOTOGRAPHS (8-28-2015)



Transportation Building, Parking Garage and Maintenance Building in construction; at the bottom side Cesar Chavez Avenue and at the left side Vignes Street.

CONSTRUCTION PHOTOGRAPHS (Continued)

FLY OVER JOBSITE PHOTOGRAPHS (9-21-2015)



9/21/15
Transportation Building, Parking Garage and Maintenance Building in construction; at the bottom side Cesar Chavez Avenue and at the bottom left side Vignes Street with all lanes open.

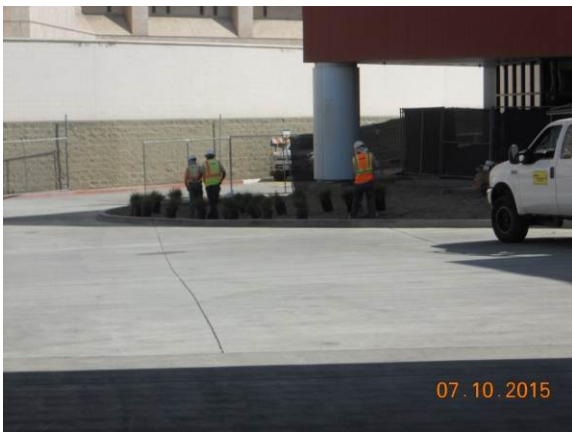
CONSTRUCTION PHOTOGRAPHS (Continued)



Signage on Maintenance Gates installation in progress.



Striping and Landscaping work in progress at Div 13 West Side .



Landscaping work in progress at Bldg 1 Southwest Corner.



Accessibility equipment installation for DA in progress at Bldg A L1.

CONSTRUCTION PHOTOGRAPHS (Continued)



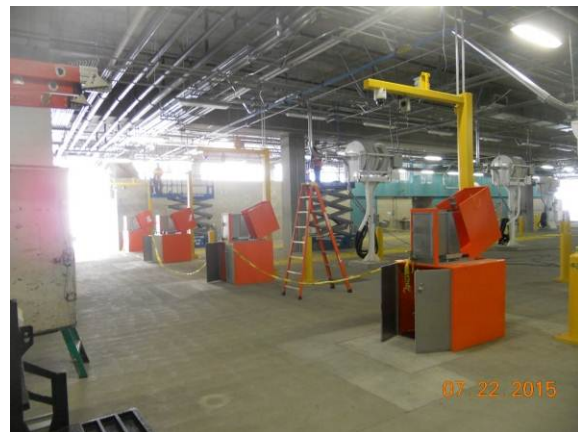
Vegetated Roof Garden Landscaping work in progress



Fare Vaults on site at Bldg B Level 1, installation in progress.



Carpeting & painting completed at Transportation Bldg. Level 2.



Fare vaults installation in progress at Parking Garage Bldg. Level 1.

CONSTRUCTION PHOTOGRAPHS (Continued)



Glazing installation completed at Transportation Bldg. Lower Level.



Lighting fixtures installation under East Wall Soffit completed.



Fuel pump installation in progress at Non-Rev Fuel Area.



Zero Emissions Electric Bus Test Drive in progress at Bldg. B.

CONSTRUCTION PHOTOGRAPHS (Continued)



Exhaust Fans Redesign construction in progress at Bldg. B LL



Painting, Carpeting and finishing now completed at Bldg. A L2



Metro Signage Installation completed at Southwest corner of Div 13.



Vegetated Garden Roof Planting in progress.

CONSTRUCTION PHOTOGRAPHS (Continued)



Installation of redesign of ventilation system in progress at Bldg B. LL.



Ground Penetrating Radar (GPR) testing Parking Bldg Level 1.



ADA Compliant Hinged Alum cover plate installation at Bldg A L1.



Column painting & lighting completed at Parking Bldg. Level 1.f.

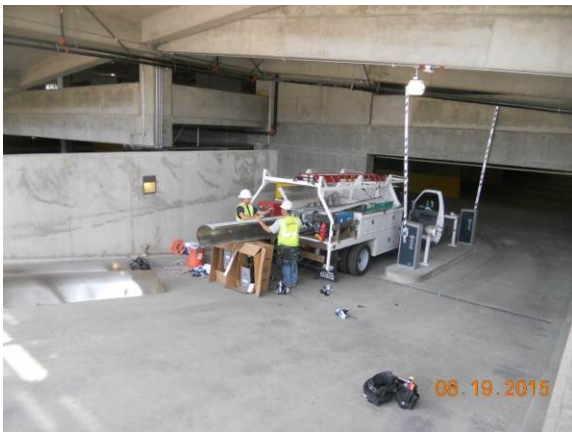
CONSTRUCTION PHOTOGRAPHS (Continued)



Painting, signage & light fixtures intallation completed at Bldg. C. L1.



Street Tree planting & landscaping completed along Vignes St.



Overhead doors drum barrel on-site manufacturing in progress.



Cleaning completed at Parking Garage Ramps at Upper Level.

CONSTRUCTION PHOTOGRAPHS (Continued)



Prep & cleaning for striping work at North of Maintenance Bldg.



Power Panels installation for Exhaust Fans at Bldg. B Lower Level.



Striping and Painting completed at Fuel stations at Bldg. B Level 1.



Flow Deflectors modification in progress at Parking Bldg. L.L.

CONSTRUCTION PHOTOGRAPHS (Continued)



Exhaust Fan #3 installation in progress at Bldg. B Lower Level.



Plumbing and Cleaning work in progress at exterior CNG Facility.



All EFs at redesign location, ready for installation & power .



Vegetated Roof Garden Landscaping work completed.

CONSTRUCTION PHOTOGRAPHS (Continued)



Multiple cracking at joint concrete slab at Parking Garage Level 1.



Vignes St Striping Prep, Layout & Lane opening in progress.



Vignes Street Striping commenced. Work completed same day.



Trench Drain Repair Mock up in progress at Bldg. B Upper Level.

CHRONOLOGY OF EVENTS – BUS MAINTENANCE FACILITY

December 2, 2011	Project put on hold by Metro Management.
April 3, 2012	Project hold released by Metro Management.
May 15, 2012	Award Notice issued to successful bidder.
May 24, 2012	Contract awarded to McCarthy Building Companies.
May 24, 2012	Limited Notice to Proceed issued to contractor for non-construction, non-craft labor work.
July 23, 2012	Notice to Proceed issued to Contractor.
December 3, 2012	The City of Los Angeles (Department of Transportation) approved temporary Traffic Control Plans.
December 18, 2012	Start of hazardous soil removal.
December 18, 2012	Start City utilities at Vignes Street.
January 8, 2013	Mass grading, over-excavation and recompaction at Transportation and Parking Structure.
January 31, 2013	Mass grading, over-excavation and recompaction at Maintenance Building.
February 6, 2013	Start layout for foundations at Transportation and Parking Garage buildings.
February 28, 2013	Start concrete placement for foundations at Transportation and Parking Structure.
March 12, 2013	Start lower level shear and retaining walls reinforcement at Transportation and Parking Structure.
March 26, 2013	Discover fossilized human bone at Vignes Street.
April 18, 2013	Start excavation and layout foundations at maintenance building.
April 24, 2013	Start footing reinforcement at Maintenance Building.
April 25, 2013	Complete installation of Shoring Piles and Shoring at Diamond Building.

CHRONOLOGY OF EVENTS – BUS MAINTENANCE FACILITY (Continued)

April 25, 2013	Complete excavation of foundations at Building C.
April 30, 2013	Start footing concrete placement at Maintenance Building.
May 13, 2013	Start on-site utilities at Transportation Building.
May 15, 2013	Start installation of below grade waterproofing.
May 23, 2013	Complete slot cutting at west side of Building 1.
June 12, 2013	Approval of Cesar Chavez Traffic Plans.
June 18, 2013	Complete installation of storm drain.
July 13, 2013	Install foundation at Building C along H Line.
July 14, 2013	Complete jack and bore from MH #24 to MH #25 intersection Vignes/Cesar.
July 19, 2013	Slot cutting at the south of Building No. 1.
July 23, 2013	Complete foundation of wash pit.
July 29, 2013	Completion of 10 and 8 inch water line.
August 2, 2013	Start relocation of Radiator Shop.
August 7, 2013	Complete installation of offsite sewer line.
August 19, 2013	Complete Slab-on-Grade Phase No. 1 at Building B.
August 22, 2013	Complete wash pit walls.
August 23, 2013	Complete excavation and removal of Lyon Street.
August 30, 2013	Install telephone and data line at Radiator Shop.
Sept. 27, 2013	Install equipment and HVAC System at Radiator Shop.
Sept. 30, 2013	Complete foundations at Building B.
October 11, 2013	Start layout for foundations at Maintenance Building.
October 11, 2013	Start foundations at Building C.

CHRONOLOGY OF EVENTS – BUS MAINTENANCE FACILITY (Continued)

October 16, 2013	Start excavation of foundations at Maintenance Building.
October 26, 2013	Start reinforcement for spread footings and grade beams at Maintenance Building.
November 5, 2013	Start demolition of Building No. 1.
November 6, 2013	Concrete placement for foundations at Maintenance Building.
November 7, 2013	Start slab-on grade concrete placement at Transportation Building.
November 13, 2013	Start walls and columns at Building C Level 1.
November 13, 2013	Complete slot cutting at west side of Building 1.
November 22, 2013	Complete relocation of Radiator Shop.
December 4, 2013	Concrete deck pour No.1, Building B elevated deck at Level 1.
December 9, 2013	Complete slab-on grade at Building B.
December 11, 2013	Start 1 st level deck panel and beam buildup at Parking Garage.
December 13, 2013	Contractor completed slab-on grade concrete placement at Parking Garage.
December 20, 2013	Start pouring deck at Building B Level 1.
December 23, 2013	Stress reinforcing cables pour No.1.
December 30, 2013	Concrete deck pour No. 2, Building B elevated deck at Level 1.
January 7, 2014	Complete installation of ramp deck no. 1.
January 9, 2014	Contractor completed hard demolition at Building No. 1.
January 21, 2014	Complete installation of 3 Hours Wall at Building C.
January 27, 2014	Complete reinforcement and concrete placement for the elevated decks pour 2, 2, 4, 5 and 6.

CHRONOLOGY OF EVENTS – BUS MAINTENANCE FACILITY (Continued)

January 28, 2014	Layout, excavate and install reinforcement for foundations at Area 8 and 9.
February 11, 2014	Completion of elevator shaft Walls, Level 1.
February 14, 2014	Complete installation of Deck Pour No. 8, 9, 10, 11 and 12.
February 17, 2014	Contractor completed balance of concrete Deck Pours No. 7 thru 12, Building B elevated deck at Level 1.
February 17, 2014	Start layout CIP electrical trenches at the DWP Utility Service Yard.
February 21, 2014	Start roof level setting Deck Panel No. 13 at Building B.
March 12, 2014	Complete concrete Deck Pour No. 13, Building B elevated deck roof level.
March 25, 2014	Complete concrete Deck Pour No. 15, Building B elevated deck roof level.
March 28, 2014	Contractor starts concrete Deck Pour No. 14, Building B elevated deck roof level.
March 28, 2014	Roof Deck Pour No. 14 partial shoring collapse. No major injuries, four first aid cases.
April 1, 2014	Contractor Developed and provided Phase 1 demo plan of collapsed Deck #14.
April 8, 2014	SEOR and Metro returned final review and comments of Phase 1 demo plan to Contractor.
April 9, 2014	Contractor starts investigation of Deck #14 collapse.
April 17, 2014	Contractor executes Phase 1 demo plan, the removal of concrete debris of deck #14 collapse.
April 21, 2014	Metro/ WJE starts investigation analysis of deck #14 collapse.

CHRONOLOGY OF EVENTS – BUS MAINTENANCE FACILITY (Continued)

April 29, 2014	Contractor/WDP developed initial plan for Phase 2 removal of deck rebar and tendons of collapsed deck #14 and ramp #3.
April 29, 2014	Contractor WDP performs nondestructive testing of structural slab, columns and ramp elements.
May 12, 2014	Contractor completes concrete Deck Pour No. 17, Building B Elevated Deck Roof Level.
May 19, 2014	SEOR approves design for permanent structure rebuild plan.
May 19, 2014	Contractor completes concrete Deck Pour No.9, Building B Elevated Deck Roof Level.
May 23, 2014	SEOR approves design for permanent structure rebuild plan.
June 6, 2014	Contractor completes concrete Deck Pour No.21 Building B Elevated Deck Roof Level.
June 16, 2014	Contractor completes concrete Deck Pour No.23 Building B Elevated Deck Roof Level.
June 20, 2014	Contractor completes concrete Deck Pour No. 14 and Ramp Deck #3 Building B Elevated Deck Roof Level.
July 1, 2014	Contractor completes foundations.
July 1, 2014	Contractor starts installation of axle-lift equipment at Running Repair Bays in Area 7.
July 2, 2014	Paint prep, prime and first coat begins at lower level Parking Garage and Maintenance Building.
July 9, 2014	LADWP starts electrical pole removal and power is ran underground along Cesar Chavez.
August 4, 2014	Contractor completes Deck Pour No. 22, Building B Elevated Deck Roof Level.
August 6, 2014	LADWP final inspection of DPW switchgears completed.
August 11, 2014	Contractor completes Deck Pour No. 24 and Ramp #4, Building B Elevated Deck Roof Level.

CHRONOLOGY OF EVENTS – BUS MAINTENANCE FACILITY (Continued)

August 22, 2014	Contractor begins excavation of the retaining wall foundation at Metro Driveway.
September 4, 2014	Contractor completes concrete pour of delay strips at roof elevation.
September 12, 2014	Contractor completes concrete pour of Retaining Wall Section #2 along Cesar Chavez Avenue.
September 15, 2014	LADWP schedule to start work for the installation of the new 10-in fire service.
September 20, 2014	LADWP starts pulling underground cable to Utility Yard Service.
September 24, 2014	Contractor submits the Load Test Procedure for Deck #1 at Parking Garage.
September 24, 2014	Contractor completes tree removal along Cesar Chavez Avenue.
September 26, 2014	Contractor completes stripping of false work of decks of Building B and C except for delay strip section at Parking Garage Building B.
September 26, 2014	Contractor completes stripping of false work of decks of Building B and C except for delay strip section at parking Garage Building B.
September 26, 2014	Contractor starts structural steel installation.
October 3, 2014	LADWP completes installation of the new 10 inch fire service.
October 7, 2014	Balance of masonry walls completed at Building B.
October 9, 2014	Contractor completes the installation and backfilling of sewer lateral L at Building No. 1.
October 25, 2014	Contractor completes placement of retaining wall at Metro Driveway.
November 13, 2014	Completed final Load Testing procedures at Deck #2.
November 14, 2014	Contractor stripped false work for delay strip at Building B.
November 14, 2014	Contractor completes shop drawings for art work.

CHRONOLOGY OF EVENTS – BUS MAINTENANCE FACILITY (Continued)

November 18, 2014	Approval to proceed with revised 10 ½" PCC pavement section at Metro Driveway and east side.
November 19, 2014	Completed placement of exterior light poles at Building B.
November 21, 2014	Contractor starts exterior metal framing at Building A.
December 19, 2014	LADWP completes permanent power and installs meter to utility DWP Yard service.
December 19, 2014	Approved LADOT signaling and stripping plans provided to Contractor.
December 24, 2014	Contractor starts placement of steel rebar reinforcement at Metro Driveway.
January 9, 2015	Completed installation of overhead light fixture at Building No. 1.
January 15, 2015	Completed installation of overhead fire sprinkler piping at Bldg. No. 1.
January 22, 2015	Completion of structural steel top out.
January 22, 2015	Completed installation of HVAC exhaust ducts/fans and louvers at Building B lower level.
January 23, 2015	Completed installation of overhead duct work at Building No. 1.
January 23, 2015	Completed all tank vault activities at Building B lower level tank walls.
February 6, 2015	Completion of Southern California Gas installation of MSA at Main Gas Service.
February 20, 2015	Relocation of traffic signals at Cesar Chavez Avenue.
February 26, 2015	Pouring of sidewalks and driveways at Vignes Street (8').
February 26, 2015	Bulletin #22 added 10" fire line completed
March 12, 2015	Completed installation of vehicle wash equipment (EQ. ID#3838) at RM's 103 and 104
March 20, 2015	Completed structural steel frame artwork.
March 20, 2015	Building B elevated deck upper level application for traffic coating completed at mid-section.

CHRONOLOGY OF EVENTS – BUS MAINTENANCE FACILITY (Continued)

March 26, 2015	SCG turned on gas to CNG Yard.
March 27, 2015	Completed Building B and C south elevation PV panel and perforated panels.
March 27, 2015	Completed Building A exterior finishes.
April 24, 2015	Completed relocation and construction of new fire hydrant at Cesar Chavez.
April 25, 2015	Exterior improvements parking bumpers and pavement approved.
April 27, 2015	Plants for exterior improvements landscaping work delivered.
April 27, 2015	Installation of graphics at lower level at Building B.
April 27, 2015	Completed final coat of paint on Building 1 interior buildout.
April 28, 2015	Installation of balance of temporary fence at Vignes Street.
April 29, 2015	Installation of lighting devices /XFRMERS in panels at art work lighting.
May 1, 2015	Unknown brick manhole found on Cesar Chavez.
May 4, 2015	Installation of wicket door and hardware in existing coiling at Building C.
May 14, 2015	US Transportation Secretary Anthony Foxx visits Metro Bus Division 13.
May 18, 2015	Building 1 interior build out completed and ready to turn over.
May 18, 2015	Bulletin 083 security screening zinc 2 and zinc 3 panels installed.
May 22, 2015	Completed installation of graphic panels at artwork cube.
May 27, 2015	Completed installation of bird deterrent at artwork cube.
June 2, 2015	Striping and bumpers at Building B upper level finishes.
June 8, 2015	Completed installation of security system devices at Bldg. A level 2.
June 9, 2015	Removed scaffolding at Building C south elevation.
June 11, 2015	Completed Bulletin 084 installation of conduits in rom C105.

CHRONOLOGY OF EVENTS – BUS MAINTENANCE FACILITY (Continued)

June 12, 2015	Completion work on RFI 1119: 1 stair 6 gate swing.
June 14, 2015	Bicycle racks delivered.
June 23, 2015	Perforated 11GA steel panel at Building C south elevation.
June 25, 2015	Compressed Natural Gas Test and IOR sign-off.
June 25, 2015	Relocation of traffic signals at Cesar Chavez Avenue.
July 7, 2015	<i>Finish elevator #1.</i>
July 10, 2015	<i>Start-up lighting controls systems at Building A.</i>
July 10, 2015	<i>Begin fire sprinkler system pre-test at Building A.</i>
July 27, 2015	<i>Begin HVAC air balance pre-test at Building A.</i>
July 27, 2015	<i>Begin fire alarm system pre-testing at Building A.</i>
July 30, 2015	<i>Begin start-up equipment at Building B parking garage.</i>
July 30, 2015	<i>Begin doors and hardware (fire life/safety) pre-testing at Building A.</i>
July 31, 2015	<i>Finish tree planting at Vignes. St.</i>
August 10, 2015	<i>Finish start-up process piping systems at Building B & C.</i>
August 17, 2015	<i>Start-up and commissioning of CNG Yard equipment and systems.</i>
August 18, 2015	<i>Finish SOG stripping, bumpers and coating for all parking levels at parking garage.</i>
August 21, 2015	<i>City of LA approves traffic light mast arm for Cesar Chavez & Vignes St.</i>
August 25, 2015	<i>Start punch list and corrections at Transportation Building.</i>
August 25, 2015	<i>Finish final paint coat at Chassis Wash Area.</i>
August 27, 2015	<i>Start punch list and corrections at Chassis Wash Area.</i>

CHRONOLOGY OF EVENTS – BUS MAINTENANCE FACILITY (Continued)

<i>September 2, 2015</i>	<i>Start punch list and corrections at Maintenance Building C.</i>
<i>September 2, 2015</i>	<i>Start punch list and corrections at parking garage.</i>
<i>September 14, 2015</i>	<i>Start punch list and corrections of street electrical at Ceasar Chavez Avenue.</i>
<i>September 28, 2015</i>	<i>Finish HVAC air balance pre-test and QC at Lower Level 1 and Level 2 by Contractor.</i>
<i>September 28, 2015</i>	<i>Finish Building B Lower Level Area parking garage.</i>

CHRONOLOGY OF EVENTS – CNG FACILITY PROJECT

May 5, 2014	Approval to start construction.
May 9, 2014	Contractor to start mobilization on site.
June 10, 2014	Contractor begins 6-inch suction gas line trench excavation on Metro Driveway.
July 8, 2014	Contractor completes concrete pouring for the light pole footings.
July 8, 2014	Contractor completes 100% design submittal.
July 22, 2014	Underground 6-inch gas suction line installation complete along Metro Driveway.
July 24, 2014	6-inch gas suction line trench excavation and backfill complete at the CNG Compound.
August 14, 2014	Underground electrical conduits installation begins.
August 25, 2014	Contractor completes installation of interior pipe racks structure.
September 4, 2014	Concrete poured for equipment pads at the CNG Yard.
September 17, 2014	Major CNG compressors/dryer skids, diesel fuel generator delivered on site.
September 18, 2014	Contractor completes setting of major gas compression equipment at the CNG Yard.
October 6, 2014	Contractor starts installation of overhead mechanical piping and electrical conduits.
October 27, 2014	Contractor continues installing electrical conduits and mechanical piping in electrical rooms, dispensing and service equipment at the compound area.
December 8, 2014	Contractor starts pressure testing of high pressure system.

CHRONOLOGY OF EVENTS – CNG FACILITY PROJECT

January 31, 2015	Pressure testing of CNG piping by EFS/West, witness by Metro Fire Marshall.
February 27, 2015	De-mobilize clean energy from project site due to lack of permanent power and CNG Building sensors operational to continue work.
March 6, 2015	3200A feed to electrical room for CNG Yard.
March 26, 2015	SCG turned on gas to CNG Yard.
<i>April 28, 2015</i>	<i>Performed cathodic protection testing (2nd).</i>
<i>May 4, 2015</i>	<i>Energize MCC.</i>
<i>May 5, 2015</i>	<i>Begin equipment start-up.</i>
<i>August 13, 2015</i>	<i>Finish final electrical inspection.</i>
<i>August 14, 2015</i>	<i>Finish equipment start-up.</i>
<i>August 15, 2015</i>	<i>Finish test safety system.</i>
<i>September 9, 2015</i>	<i>Begin fueling MTA buses.</i>
<i>September 12, 2015</i>	<i>Begin performance testing.</i>
<i>September 24, 2015</i>	<i>Performance Test passed.</i>
<i>September 30, 2015</i>	<i>Substantial Completion.</i>

APPENDICES

COST AND BUDGET TERMINOLOGY

ADOPTED BUDGET: The Approved Project Budget as established by Metro Board of Directors at the time it authorizes Construction Project Management Division to commence full design and construction of the project (Project Adoption).

CURRENT FORECAST: Evaluation of costs to go combined with actual expenditures.

COMMITMENTS: The total of actual contract awards, executed change orders or amendments, approved work orders of Master Cooperative Agreements, offers accepted for purchase of real estate, and other Metro actions which have been spent or result in the obligation of specific expenditures at a future time. Also includes commitments reported by other agencies.

EXPENDITURES: The total dollar amount of funds expended by Metro for contractor or consultant invoices, third party invoices, staff salaries, real estate and other expenses that is reported in Metro's Financial Information System (FIS and expenditures reported by other agencies.

APPENDIX LIST OF ACRONYMS

AFC	Approved For Construction
BNSF	Burlington Northern Santa Fe Railway
CADD	Computer Aided Drafting and Design
CCTV	Closed Circuit Television
CD	Calendar Day
CM	Construction Manager
CMAC	Congestion Mitigation Air Quality
CMIA	Cash Management Improvement Act
CN	Change Notice
CNG	Compressed Natural Gas
CO	Change Order
CPM	Critical Path Method
CPUC	California Public Utilities Commission
CR	Camera Ready
CO	Change Order
CTC	California Transportation Commission
D-B	Design-Build
D-B-B	Design-Bid-Build
DBOM	Design, Build, Operate and Maintain
DD	Design Development
DEIR	Draft Environmental Impact Report
DWP	Department of Water and Power
EA	Environmental Assessment
EIR	Environmental Impact Report
EIS	Environmental Impact Statement
FD	Final Design
FEIR	Final Environmental Impact Report
FHWA	Federal Highway Administration
FIS	Financial Information System
FOCT	Fiber Optics Cable Transmission System
FTE	Full Time Equivalent
IFB	Invitation for Bid
IPO	Integrated Project Office
LA	Los Angeles
LADWP	Los Angeles Department of Water and Power
LFAT	Local Field Acceptance Test
LNTF	Limited Notice To Proceed
LONP	Letter Of No Prejudice
LOP	Life of Project
MCA	Master Cooperative Agreement
METRO	Los Angeles County Metropolitan Transportation Authority

APPENDIX LIST OF ACRONYMS (Continued)

MIS	Major Investment Study
MOT	Maintenance of Traffic
MOU	Memorandum of Understanding
MSA	Meter Set Assembly
MSSC	Metro Support Services Center
N/A	Not Applicable
NOA	Notice of Award
NTE	Not to Exceed
NTP	Notice To Proceed
O & M	Operations and Maintenance
PC	Project Control
PE	Preliminary Engineering
PIP	Project Implementation Plan
PLA	Project Labor Agreement
PM	Project Manager
PMA	Project Management Assistance
PMP	Project Management Plan
P&P	Policies & Procedures
PR	Project Report
PS&E	Plans, Specs & Engineering
PSR	Project Study Report
QA	Quality Assurance
QAR	Quality Assurance Report
QC	Quality Control
QPSR	Quarterly Project Status Report
RFC	Request For Change or Released for Construction (based on context)
RFP	Request For Proposal
ROM	Rough Order of Magnitude
ROW	Right-Of-Way
RSTP	Regional Surface Transportation Program
RWQCB	Regional Water Quality Control Board
SAFETEA-LU	Safe, Accountable, Flexible, Efficient Transportation Equity Act: A Legacy for Users
SCE	Southern California Edison
SD	Storm Drain
SEOR	Structural Engineer of Record
SIT	System Integration Testing
SOW	Statement Of Work
SP	Special Provision
TBD	To Be Determined
UPS	Uninterrupted Power Supply
USDOT	United States Department of Transportation
VE	Value Engineering

APPENDIX
LIST OF ACRONYMS (Continued)

WBS	Work Breakdown Structure
WDP	Whitlock Dalnymple Poston
WP	Work Package