

Division 20 Portal Widening and Turnback Facility

Public Scoping Meeting – November 8, 2017



Meeting Agenda

- Scoping Process & CEQA Overview
- Project Background & Description
- Next Steps
- Open House

Scoping Process/CEQA Overview



Purpose of this Scoping Meeting

- Held during 30 day public comment period
- Provide Project information
- Receive input on environmental resources and issues to be addressed in the Draft EIR



Metro

Public meeting for project IS/MND, December 2016

What is CEQA?

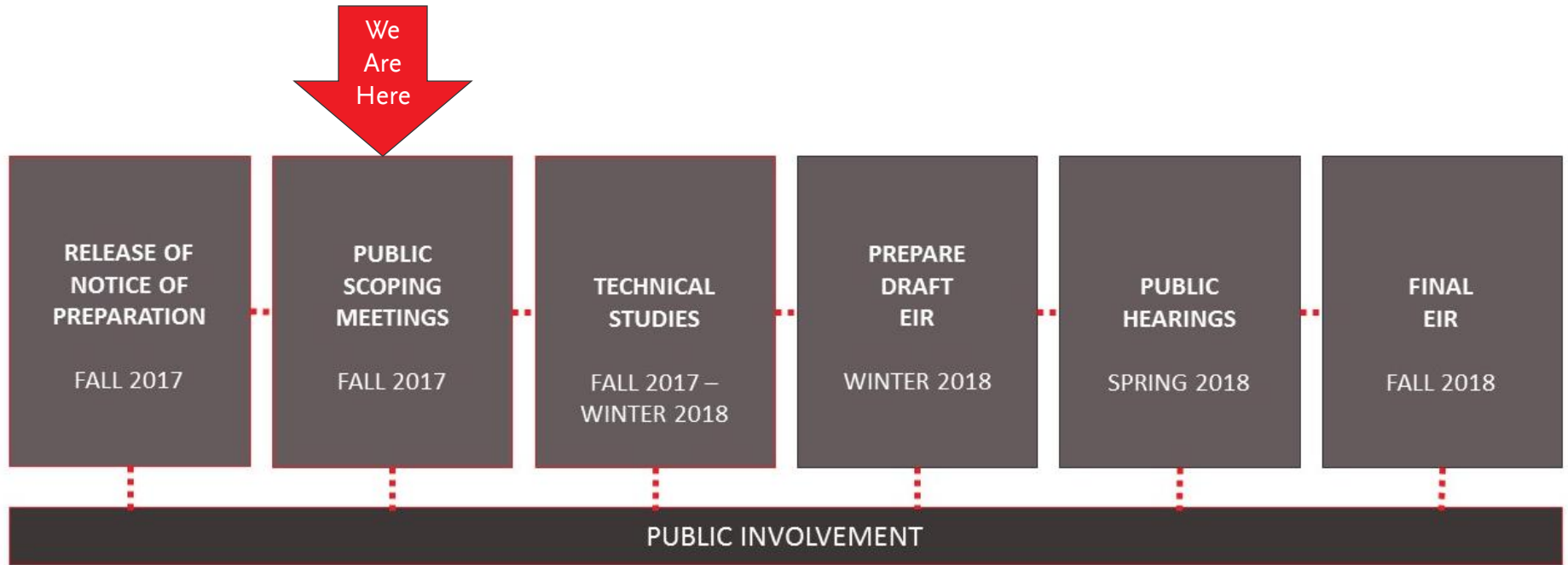
California Environmental Quality Act

- An environmental review process to identify significant environmental impacts and adopt feasible ways to reduce those impacts, also known as mitigation measures
- Considers 18 environmental topics

Topics Discussed in the Draft EIR

- Air Quality
- Aesthetics
- Biological Resources
- Hazards and Hazardous Materials
- Utilities/Service Systems
- Cultural Resources
- Hydrology/Water Quality
- Noise
- Energy Resources
- Greenhouse Gases
- Land Use and Planning
- Transportation/Traffic

Environmental Review Timeline



Project Background & Description



Metro

Project Area

- Division 20 rail yard is approximately forty-five acres, housing Metro Red and Purple Line train storage and maintenance facilities



Project Needs

- Metro Red and Purple Lines carry over **140,000 passengers each day**
- Metro Purple Line Extension Section 1 will open 2023
- Ridership is expected to **grow by 49,000** when Metro Purple Line is extended to the VA West Los Angeles Medical Center
- **Faster service times** between Union Station and Vermont/Wilshire station

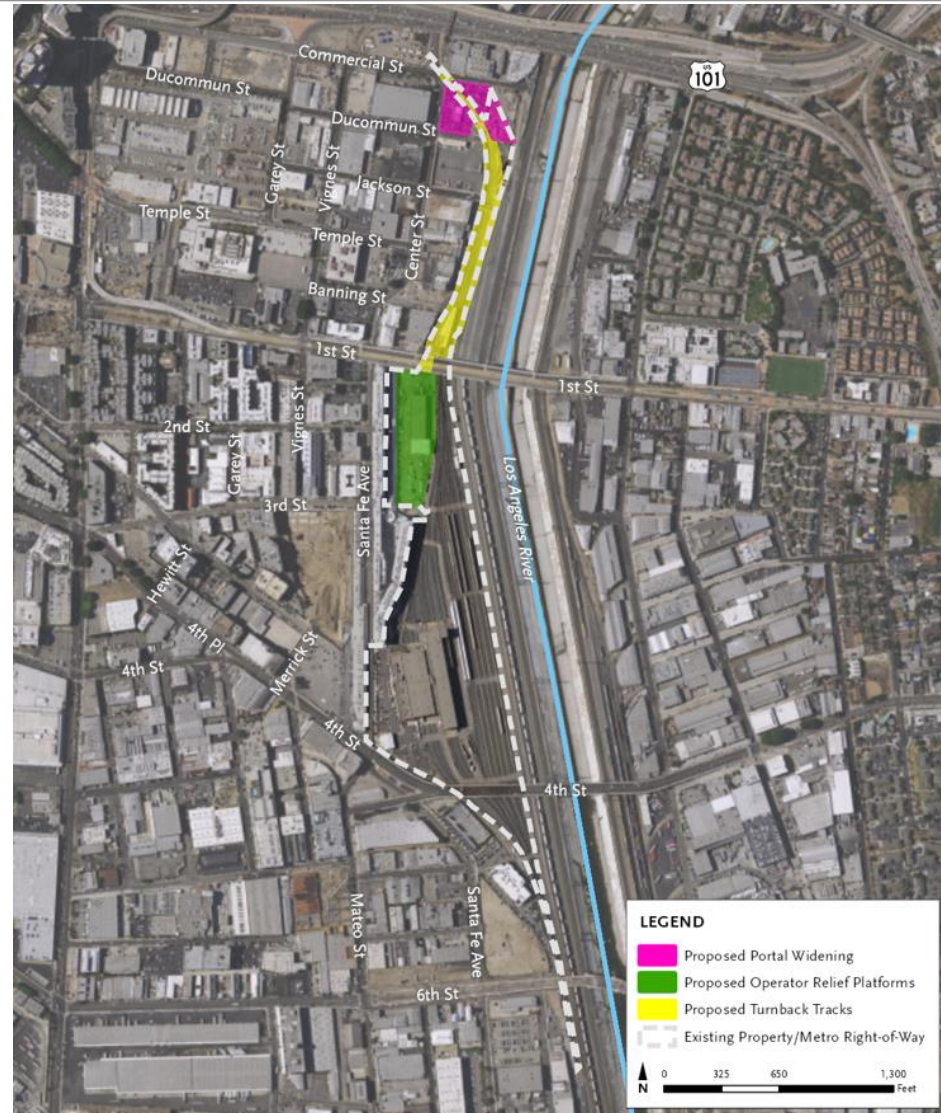


Metro Red Line

Project History

Initial Study/Mitigated Negative Declaration, March 2017

- Portal widening
- Turnback tracks
- Operator relief platforms

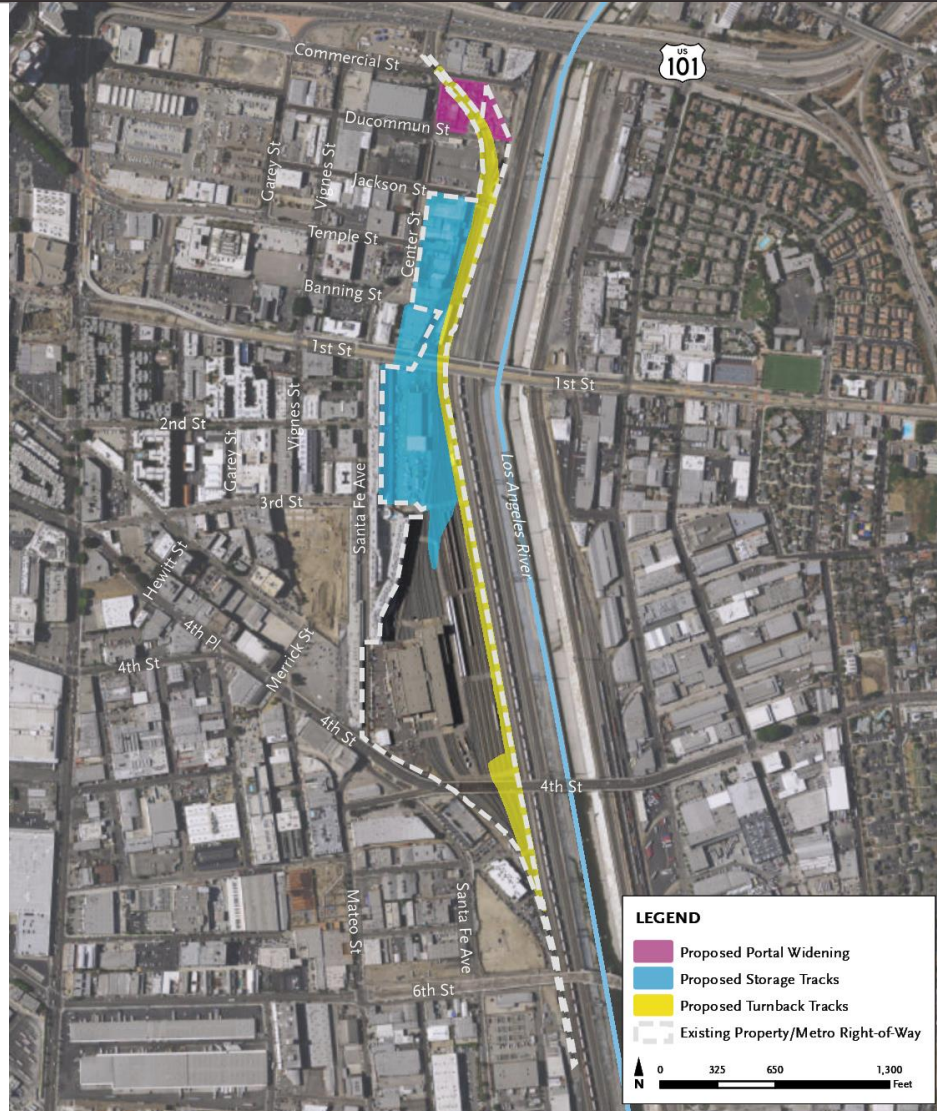


NOTE: Exact location of turnback tracks and yard tracks to be determined.

Source: Terry A. Hayes Associates Inc., 2017.

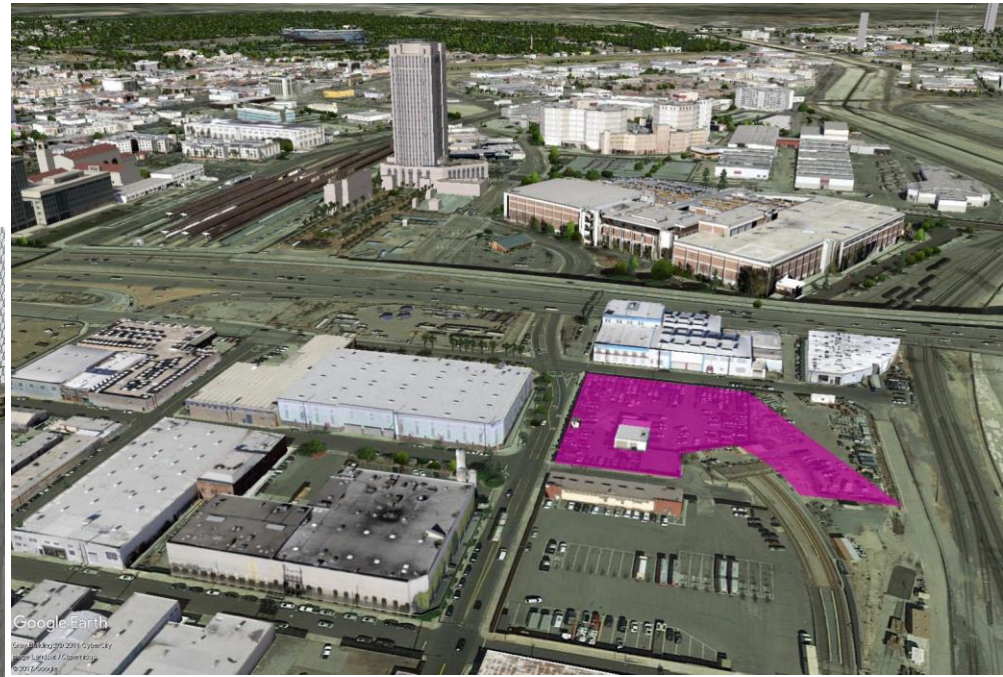
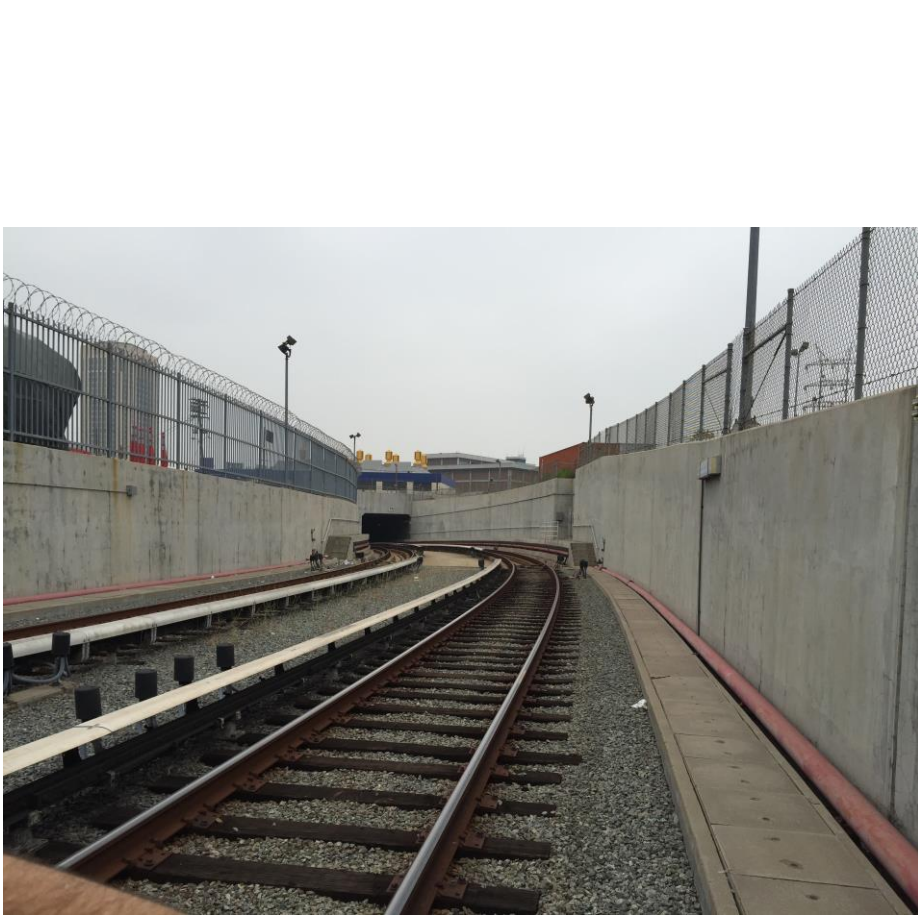
Revised Project Design-Overview

- Portal widening (unchanged)
- Turnback tracks shifted east
- Storage tracks shifted west



NOTE: Exact location of storage tracks and turnback tracks to be determined.
Source: Terry A. Hayes Associates Inc., 2017.

Revised Project Design-Portal Widening



Proposed portal widening area (pink)



Metro

Existing heavy rail portal, south of 101 freeway

Revised Project Design-Storage Tracks



View of property, facing north from 1st Street Bridge



View of property, facing south from 1st Street Bridge



Proposed storage tracks area (blue)



Metro

Revised Project Design-*Turnback Tracks*



View of 1st Street Bridge from 4th Street Bridge



Proposed turnback facility area (yellow)

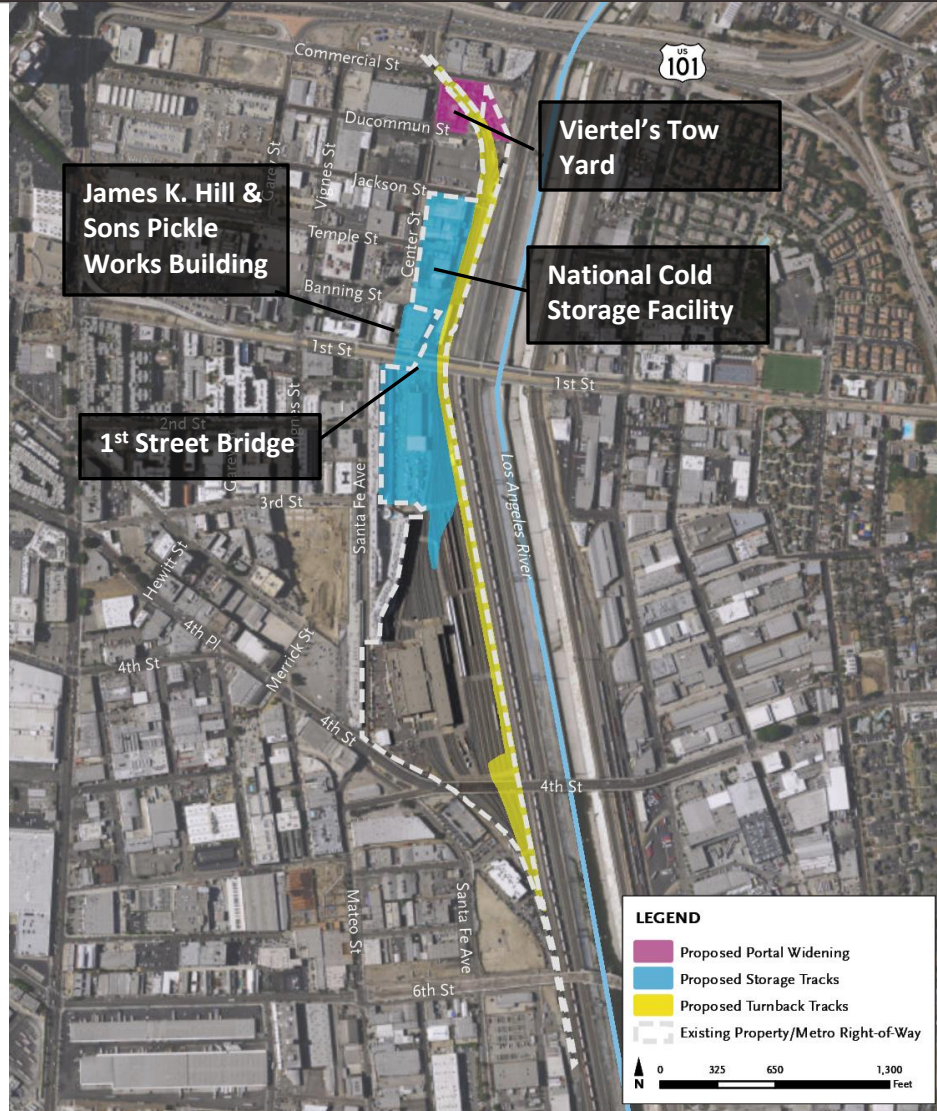


Metro

Affected Properties

- 1st Street Bridge*
- National Cold Storage Facility
 - 815 East Temple Street, 234 Center Street, and 210 Center Street
- James K. Hill & Sons Pickle Works Building*
 - 1001-1007 East 1st Street
- Viertel's Tow Yard*
 - 500 N Center Street

* *Non-Metro owned properties*

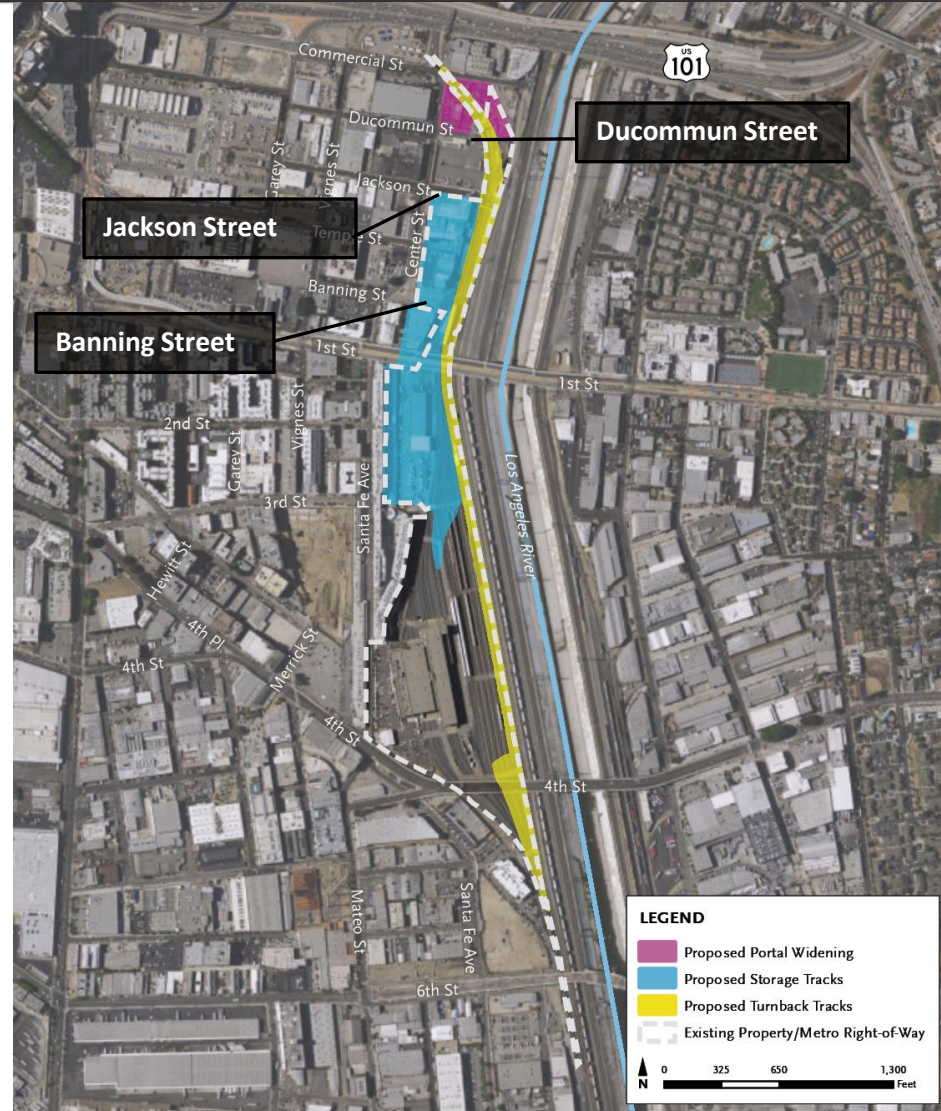


NOTE: Exact location of storage tracks and turnback tracks to be determined.

Source: Terry A. Hayes Associates Inc., 2017.

Affected Streets

- Jackson Street
- Banning Street
- Ducommun Street



NOTE: Exact location of storage tracks and turnback tracks to be determined.

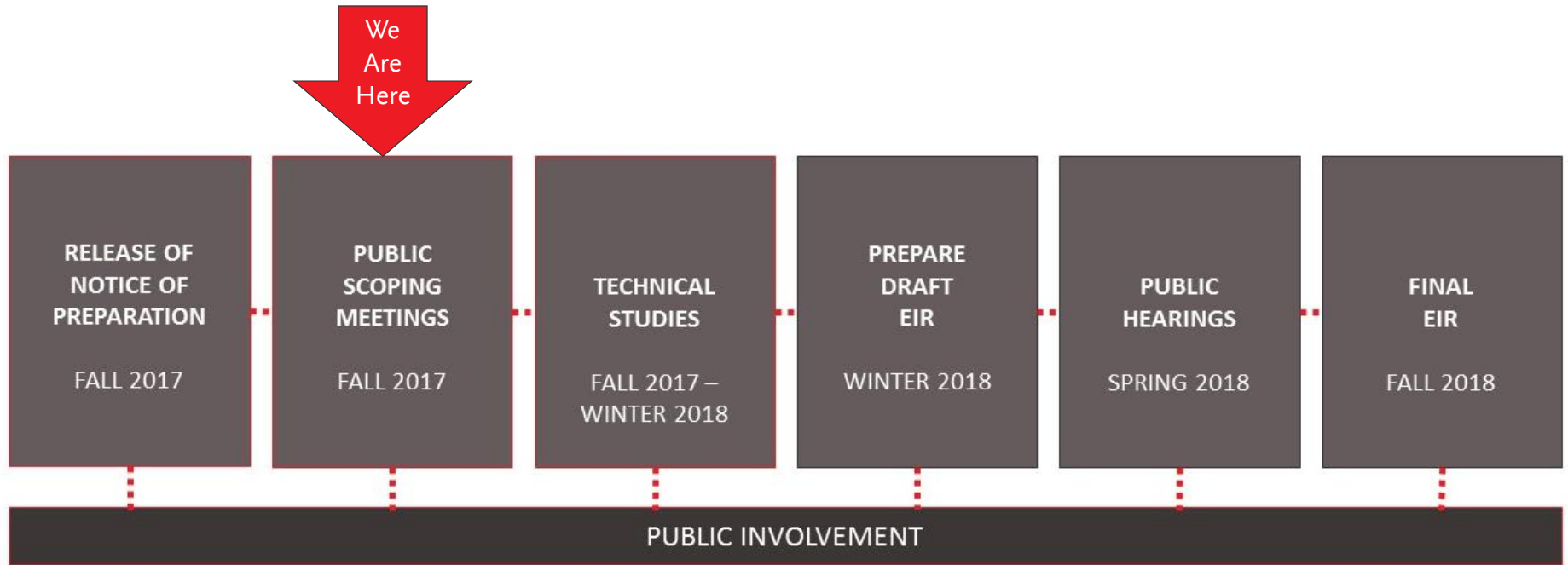
Source: Terry A. Hayes Associates Inc., 2017.

Next Steps



Metro

Environmental Schedule



Next Steps

- 30-day public comment period for the Notice of Preparation (NOP) ends:

Friday, November 17, 2017

- › Comments may be submitted via mail or email to the following:

Cris B. Liban, Executive Officer, Environmental Compliance and Sustainability

One Gateway Plaza, M/S 99-16-9

Los Angeles, CA 90012

libane@metro.net



Metro

Stay Informed



Michael Cortez
Community Relations Manager



213.922.4465



metro.net/capital-projects



cortezmic@metro.net



Metro[®]

Division 20 Portal Widening and Turnback Facility

Thank you!

