

Division 20 Portal Widening and Turnback Facility

Public Hearing – April 12, 2018



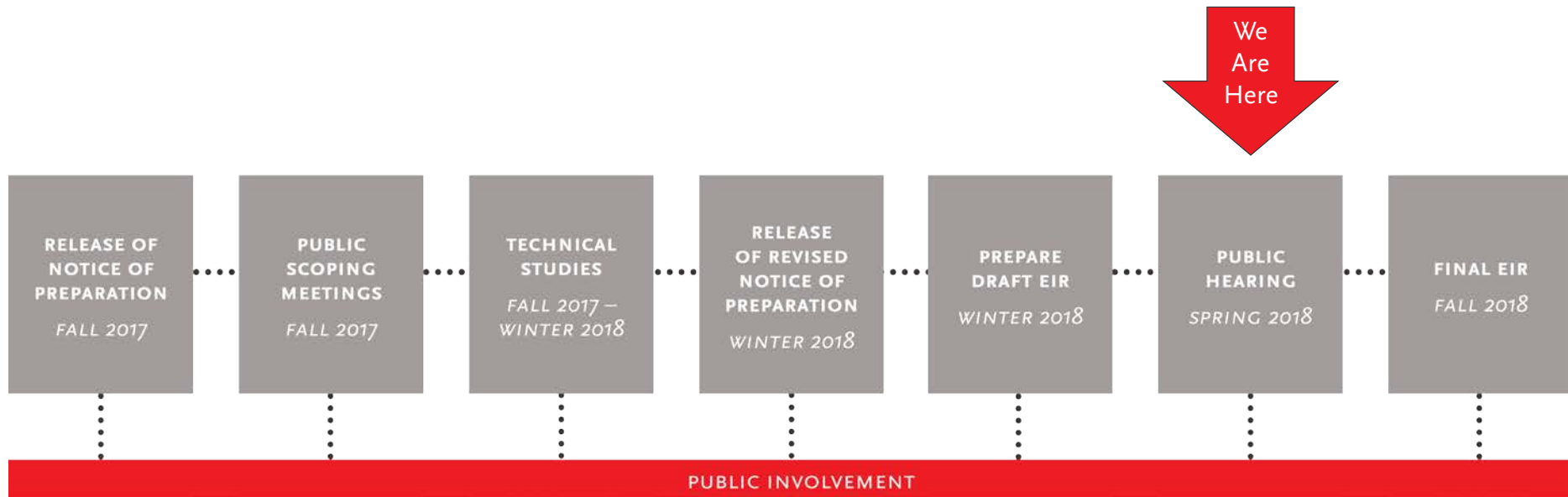
Meeting Agenda

- California Environmental Quality Act (CEQA)
Overview
- Project Background & Description
- Draft Environmental Impact Report (DEIR)
- Next Steps
- Official Comment Period
- Open House

CEQA Overview



Environmental Review Timeline



CEQA Environmental Review Process

- Division 20 Portal Widening and Turnback Facility constitutes a “Project”
- Los Angeles County Metropolitan Transportation Authority (Metro) is the Lead Agency
- Proposed Project is evaluated in an Environmental Impact Report (EIR)
 - > Draft EIR circulated for 45-day **Public Review Period:**
 - March 16 – April 30, 2018
 - > Public Hearing
 - Project description
 - Existing conditions
 - Summary of impacts
 - Accepting comments
- Final EIR to be presented to Metro Board late 2018
 - > Includes Draft EIR, comments, response to comments, and clarifications and revisions



Metro[®]

Topics Discussed in the Draft EIR

- Air Quality
- Aesthetics
- Biological Resources
- Hazards and Hazardous Materials
- Utilities/Service Systems
- Cultural Resources
- Hydrology/Water Quality
- Noise and Vibration
- Energy Resources
- Greenhouse Gases
- Land Use and Planning
- Transportation/Traffic
- Tribal Cultural Resources

The Project



Project Overview

- Operational improvements to the Division 20 Rail Yard that aim to accommodate increased service levels on the Metro Red & Purple Lines
- Improvements include:
 - > Widening of heavy rail portal
 - > New turnback facility
 - > Expansion and reconfiguration of rail storage tracks

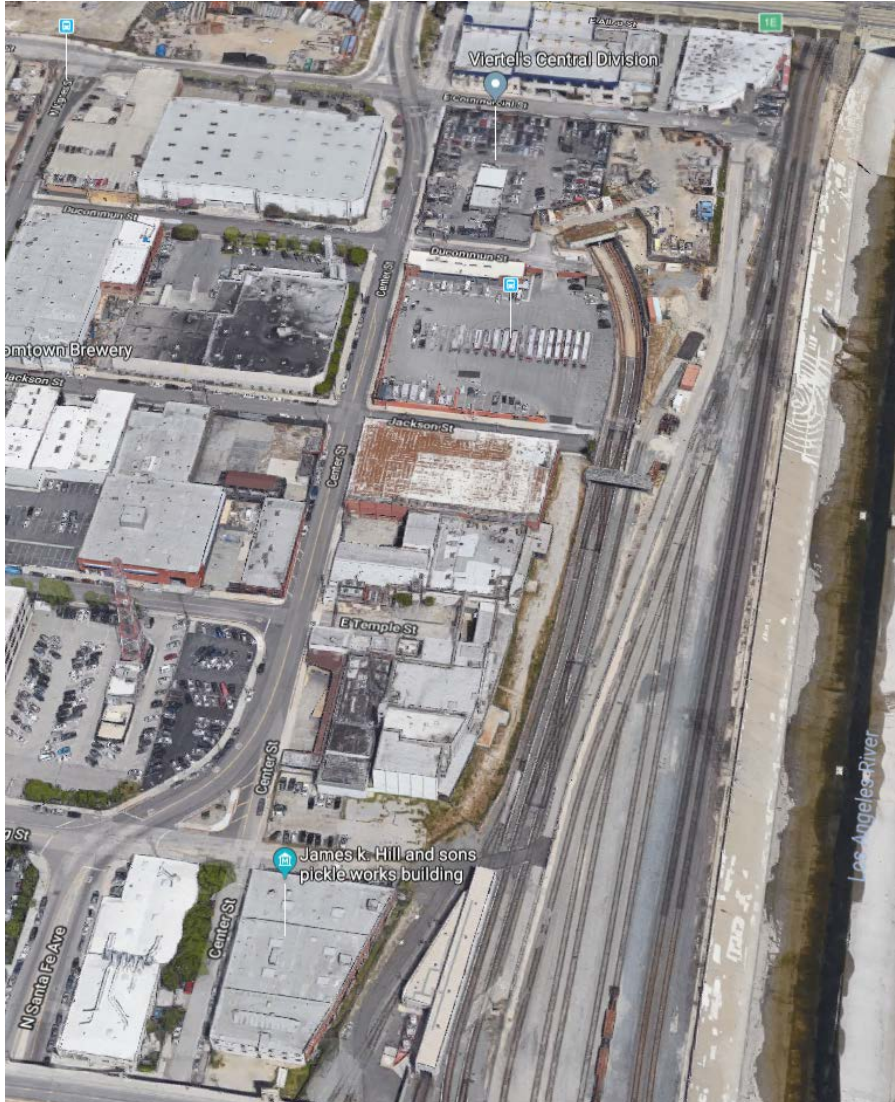


Exact location of turnback tracks and storage tracks to be determined.

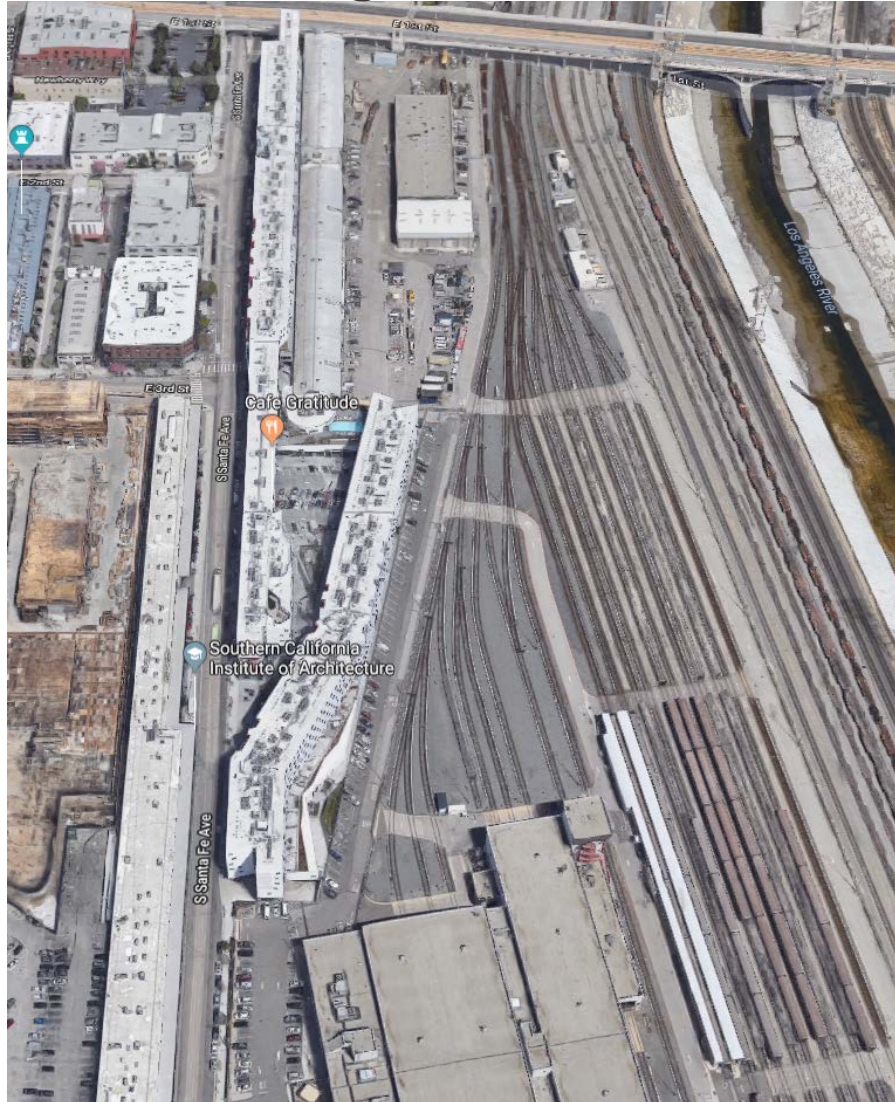


Existing Conditions

Northern Segment



Southern Segment



Project Need and Objectives

- Metro Red and Purple Lines carry over **140,000 passengers each day**
- Metro Purple Line Extension Section 1 will open 2023
- Ridership is expected to **grow by 49,000** when Metro Purple Line is extended to the U.S. Department of Veterans Affairs West Los Angeles Medical Center
- **Faster service times** between Union Station and Vermont/Wilshire station

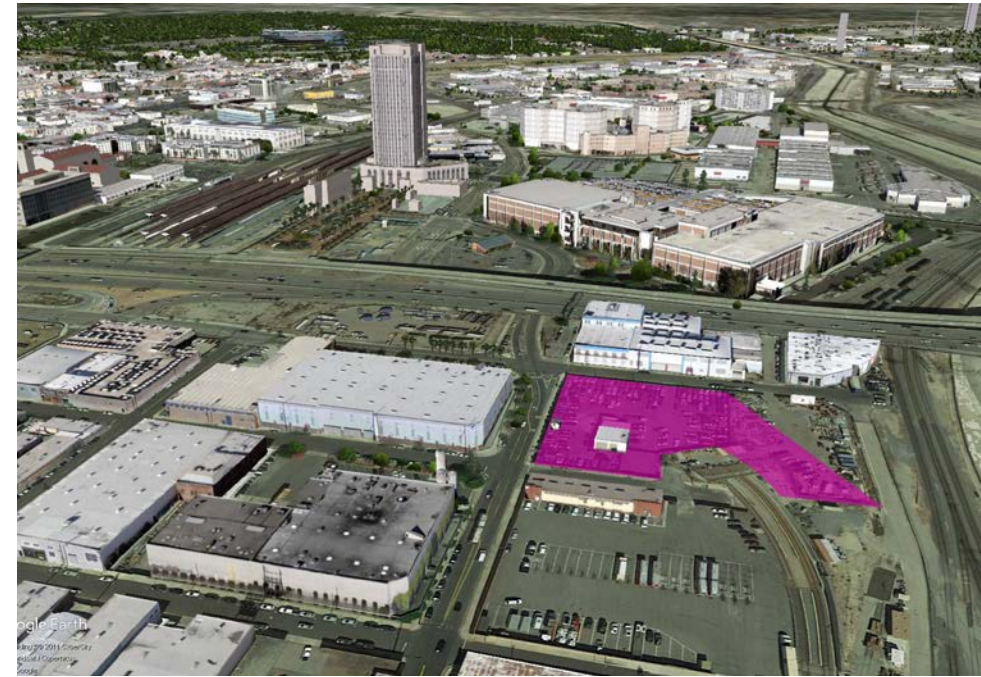


Metro Red Line

Portal Widening



Existing heavy rail portal, south of U.S. Highway 101 freeway



Proposed portal widening area (pink)

Storage Tracks



View of property, facing north from 1st Street Bridge



View of property, facing south from 1st Street Bridge



Proposed storage tracks area (blue)



Metro

Turnback Tracks



View of 1st Street Bridge from 4th Street Bridge

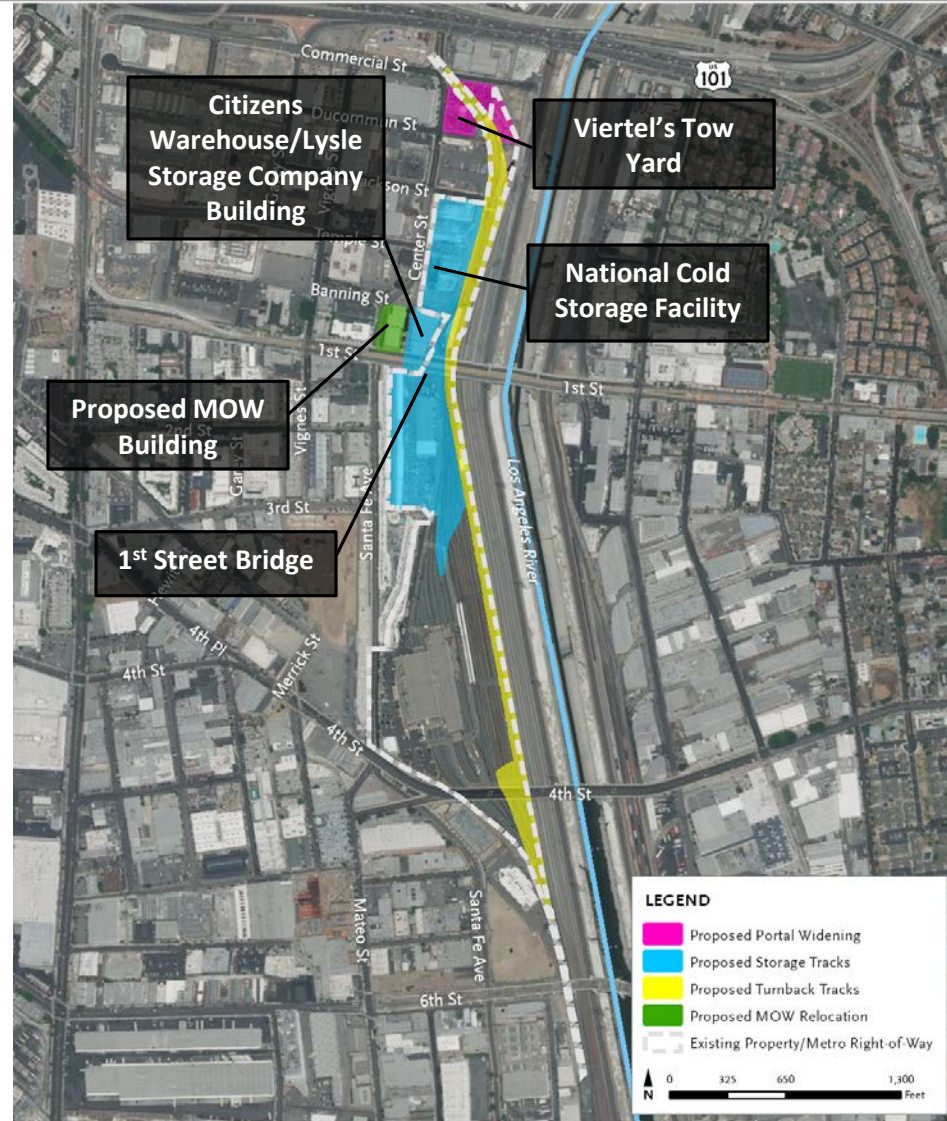


Proposed turnback facility area (yellow)



Affected Properties

- Viertel's Tow Yard
 - › 500 N Center Street
- National Cold Storage Facility*
 - › 815 East Temple Street
 - › 234 Center Street
 - › 210 Center Street
- Citizens Warehouse/Lysle Storage Company Building (James K. Hill & Sons Pickle Works Building)
 - › 1001-1007 East 1st Street
- Proposed MOW Building
 - › 100-120 N Santa Fe Avenue
- 1st Street Bridge



NOTE: Exact location of storage tracks and turnback tracks to be determined.

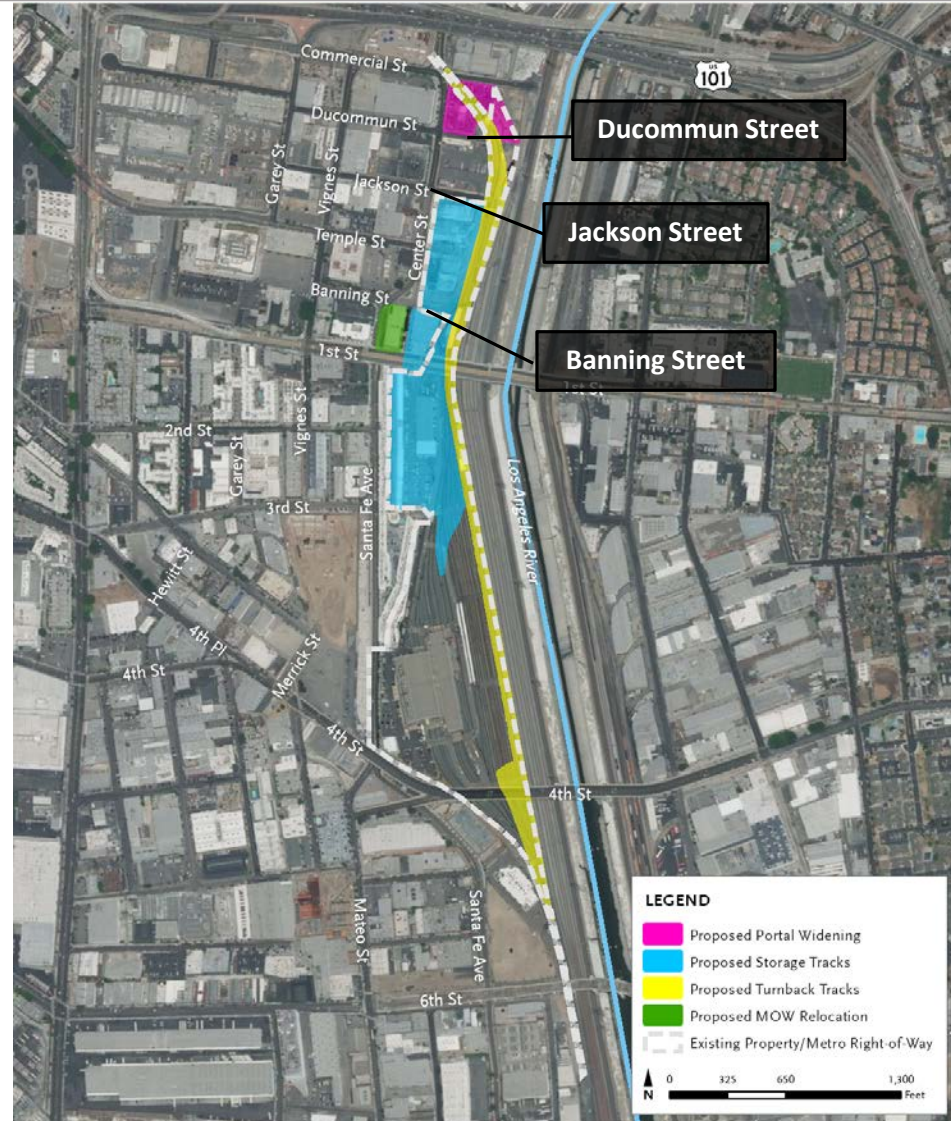
Source: Terry A. Hayes Associates Inc., 2018.



Metro * *Metro owned property*

Affected Streets

- The following streets will be permanently closed from Center Street east up to the Metro property line
 - › Jackson Street
 - › Banning Street
 - › Ducommun Street

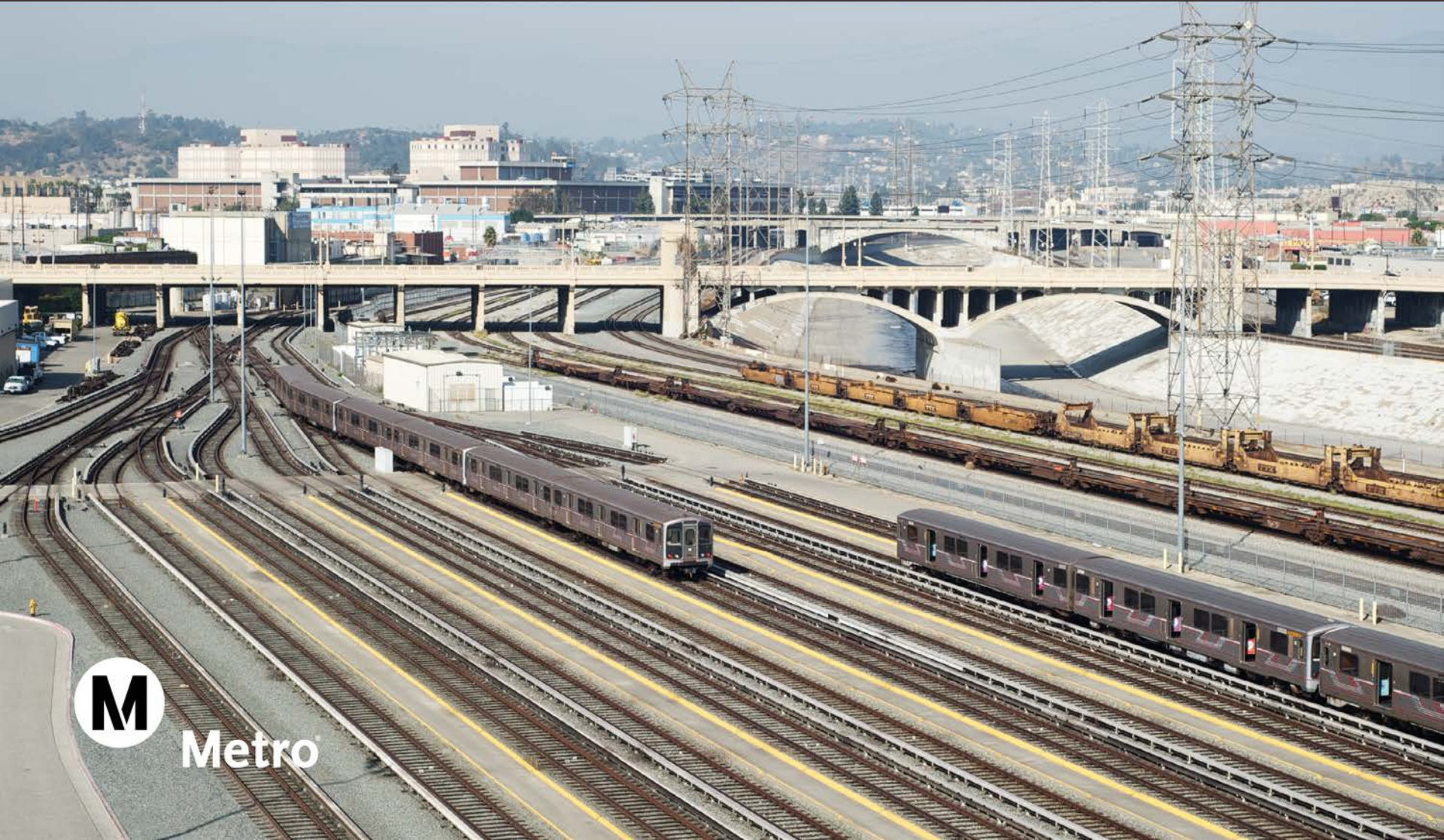


NOTE: Exact location of storage tracks and turnback tracks to be determined.

Source: Terry A. Hayes Associates Inc., 2018.



Draft EIR



Summary of CEQA Impact Areas

Significant Impacts With Mitigation Measures	Less Than Significant Impact With Mitigation Measures	No Impact or Less Than Significant Impact With Regulatory Compliance
<ul style="list-style-type: none"> • Cultural Resources: Historic Resources • Construction Noise and Vibration 	<ul style="list-style-type: none"> • Aesthetics • Cultural Resources: Archeological and Paleontological Resources • Operational Noise and Vibration • Tribal Cultural Resources 	<ul style="list-style-type: none"> • Agriculture and Forestry Resources • Air Quality • Biological Resources • Energy Resources • Geology and Soils • Greenhouse Gas Emissions • Hazards and Hazardous Materials • Hydrology and Water Quality • Land Use and Planning • Mineral Resources • Population and Housing • Public Services • Recreation • Transportation and Traffic • Utilities and Service Systems

Cultural Resources: Historic Resources

Proposed Mitigation Measures

- 1st Street Bridge design measures and treatments decorative treatments
- A report for the City of Los Angeles Public Library that documents the historic significance of the Citizens Warehouse/Lysle Storage Company (Pickle Works) building
- Stabilization of the remaining portion of the Citizens Warehouse/Lysle Storage Company building for potential future reuse
- A report for the City of Los Angeles Public Library that documents the historic significance of the National Ice and Cold Storage Facility



View of North and West Façades of Citizen's Warehouse/Lysle Storage Company Building Before Proposed Project.
Source: TY Lin International, 2018.



Anticipated View of North and West Façades Citizen's Warehouse/Lysle Storage Company Building Upon Completion of Proposed Project.
Source: TY Lin International, 2018.

Construction Noise and Vibration



View of existing Division 20 facility from 1st Street Bridge
Source: Terry A. Hayes Associates

- Noise Control and Monitoring Plan
- Vibration Monitoring Plan

Less Than Significant Impacts with Mitigation Measures

Aesthetics

- Directional lighting to reduce glare and spillover at One Santa Fe during construction and operations

Cultural Resources: Archeological and Paleontological Resources

- Cultural Resources Monitoring and Mitigation Plan
- Paleontological Monitoring and Mitigation Plan
- Retain an archaeologist and a paleontological monitor
- Human remains treatment

Less Than Significant Impacts with Mitigation Measures

Operational Noise and Vibration

- Low-impact frogs at locations with special trackwork

Tribal Cultural Resources

- Native American Monitor

Next Steps



DEIR Public Review Period

- 45-day public review and comment period:
 - › Began: Friday, March 16, 2018
 - › Ends: Monday, April 30, 2018
- Where to find the DEIR:
 - › **Kappe Library at SCI-Arc** (960 E. 3rd St, Los Angeles, CA 90013)
 - › **Little Tokyo Branch Library** (203 S. Los Angeles St., Los Angeles, CA 90012)
 - › **Los Angeles Public Library** (630 W. 5th St., Los Angeles, CA 90071)
 - › **Online at** www.metro.net/projects/division-20



Metro

Submit Your Comments

How to submit your comments:



In-Person: Oral and written comments will be recorded at today's public hearing



Web Comment Form: www.metro.net/projects/division-20



Email: LibanE@metro.net



Mail: Cris Liban, Executive Officer
LA Metro
Environmental Compliance and Sustainability
One Gateway Plaza, M/S 99-16-9
Los Angeles, CA 90012



Metro

Stay Informed



Michael Cortez

Manager of Community Relations



213.418.3423



metro.net/capitalprojects



cortezmic@metro.net



Metro[®]

Division 20 Portal Widening and Turnback Facility

Thank you!



DEIR Public Hearing Comments

- Fill out and turn in a speaker card
- Two (2) minutes per speaker
- State your name for the record
- Speak clearly so court reporter can transcribe your comments accurately
- Court reporter will capture comments for administrative record
- Responses to comments will be included in the Final Environmental Impact Report (FEIR)