

Welcome!

Rail to Rail (Segment A) Construction Update Meeting
July 2023



We're creating connections for walking and biking in South LA.

RAIL TO RAIL ACTIVE TRANSPORTATION CORRIDOR PROJECT




Let's Ride Safely Together

- Keeping riders safe is our number one priority and we're committed to providing you with a great experience on Metro.
- Visit metro.net/Safety for more information about our plan that reimagines the way we approach public safety, to ensure all our riders feel safe, comfortable, and welcome on our system.



Easy and
anonymous
way to connect
with Metro
Security
anytime

A person's hands are holding a smartphone. The phone screen displays the LA Metro Transit Watch app logo, which consists of a white circle with a black 'M' inside, set against a blue background with horizontal stripes. Below the logo, the text 'LA Metro Transit Watch' is displayed in black. The background of the phone screen shows a blurred image of a transit station.

LA Metro
Transit Watch



Free transit for students with GoPass!

Students at participating K-12 schools and community colleges ride for free on Metro and other transit agencies.

To find out if your district is participating, contact your school or visit metro.net/gopass.



Metro

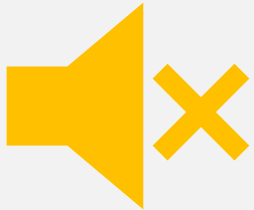
THANK YOU

A bright yellow speech bubble is centered on a solid blue background. The words "THANK YOU" are cut out of the bubble in a bold, blue, sans-serif font. The bubble has a pointed tail at the bottom right, and the cutouts are clean and precise.

Housekeeping



This meeting is being recorded. Video file will be posted on our web site at metro.net/r2r



Public video and mics are disabled. We cannot hear you or see you.



Please ask questions and submit comments via the Q&A feature.



Agenda




- > Introductions
- > Project Overview
- > Upcoming Milestones
- > Questions

Project Team

- > Construction Relations
 - Brett Roberts, Community Relations Manager
 - Perla Berry, Principal Community Relations Officer
- > Metro Construction
 - Raul Pedroza, Project Manager
- > Contractor
 - Matt Arroyo, Project Manager, Griffith Construction
- > New Media Team
 - Ginny Brideau, Community Relations Manager
 - Kim Sanchez, Transportation Associate



-  Metro Rail Lines & Stations
A E K
-  Metro Busway & Stations
J
-  Amtrak/Metrolink

- Rail to Rail/River Active Transportation Corridor Project**
-  Metro-owned Rail Right-of-Way within project limits
 -  Segment A (funded)
 -  Segment B Alternative - Randolph St

Subject to Change

23-1995 © 2022 LACMTA



Project Renderings



Hyde Park from 4th-Looking Southwest



Mixing Zone-Looking Northwest

Slauson West of Denker-Looking Northeast



Project Schedule



2022

May Activity: Groundbreaking

June to December Activities:

Clearing, Demolition, Excavation, Landscaping, Paving, Intersection Improvement Work

Location: Hyde Park Bl/11th Av to Slauson Av/ Western Av

2023

January to December Activities:

Clearing, Demolition, Excavation, Landscaping, Paving, Intersection Improvement Work

Location: Slauson Av/Budlong Av to Slauson Av/McKinley Av

2024

January to December Activities:

Clearing, Demolition, Excavation, Landscaping, Paving, Intersection Improvement Work

Location: Slauson Av/ McKinley Av to Slauson Av/Long Beach Av

Project Completion/Opening



ONGOING PUBLIC PARTICIPATION

Rail to Rail Project: Work to Date

- > Abandoned rail equipment removed
- > Contaminated soils removed east of Main St and Slauson Av
- > Construction Contract Awarded to Griffith Company
- > Clearing work, demolition, and fence installation ongoing
- > Right of Way excavation complete
- > Intersection Improvement Work
 - 8th Av
 - 4th Av
 - Paloma Av
 - Towne Av
 - Vermont Av
 - Western Av



Vermont Av Intersection Raised Crosswalk

Current Activities



Motor grader being used to finish grade placed material southwest overview



Form Placement for Pedestrian Path

Current: Western Av Intersection Improvement

Contractor begun the intersection improvement work

- > **When:** March 31, 2023
- > **Where:** Western Av between Slauson Av and 62nd St.
- > **Duration:** approximately seven months
- > **Substantial Completion Date: October 24, 2023**

What to Expect

Lane reductions on Western Av and Slauson Av

Work hours

- > Workdays from Monday to Saturday 7 am – 3:30 pm



Stage 2: Northbound Western Av closure

Current: Hooper Av Intersection Improvement

Contractor begun the intersection improvement work

- > **When:** July 18, 2023
- > **Where:** Hooper between Slauson Av and 58th St.
- > **Duration:** approximately three months
- > **Substantial Completion Date:** October 24, 2023

What to Expect

Lane reductions on Hooper Av and Slauson Av

Work hours

- > Workdays from Monday to Saturday 7am – 3:30pm



On the Horizon: McKinley Av Intersection Improvement

Contractor will begin the intersection improvement work

- > **When:** As early as September 9, 2023
- > **Where:** McKinley Av between Slauson Av and 57th St
- > **Duration:** approximately two months

What to Expect

- > **Stage 1:** Full street closure on McKinley Av
- > McKinley Av is not be accessible directly from Slauson Av.
- > McKinley Av is accessible via Avalon Bl or Central Av.
- > **Substantial Completion Date: October 28, 2023**
- > **Stage 2:** Westbound and eastbound lanes of Slauson Av will be reduced to a single lane both directions.
- > **Tentative Implementation Date: October 28, 2023**

Work hours

- > Workdays from Monday to Saturday
- > The closure will be in place for the duration of the activity



Stage 1: Full Closure of McKinley Av at Slauson Av

On the Horizon: Budlong Av Intersection Improvement

Contractor will begin the intersection improvement work

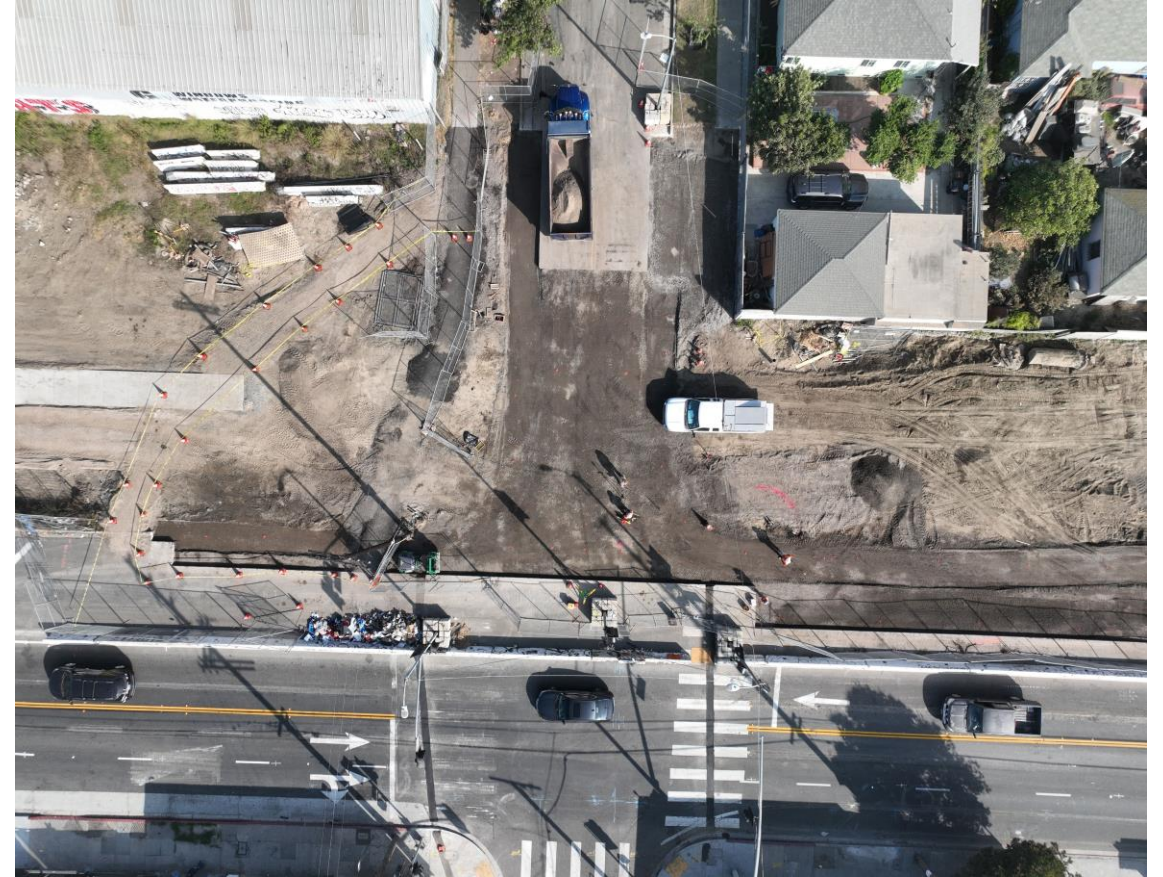
- > **When:** September 30, 2023
- > **Where:** Budlong Av between Slauson Av and 58th St
- > **Duration:** approximately two months

What to Expect

- > Full street closure on Budlong Av
- > Budlong Av is not be accessible directly from Slauson Av.
- > Budlong Av is accessible via W 58th St.

Work hours

- > Workdays from Monday to Saturday
- > The closure will be in place for the duration of the activity



On the Horizon: Van Ness Av Intersection Improvement

Contractor will begin the intersection improvement work

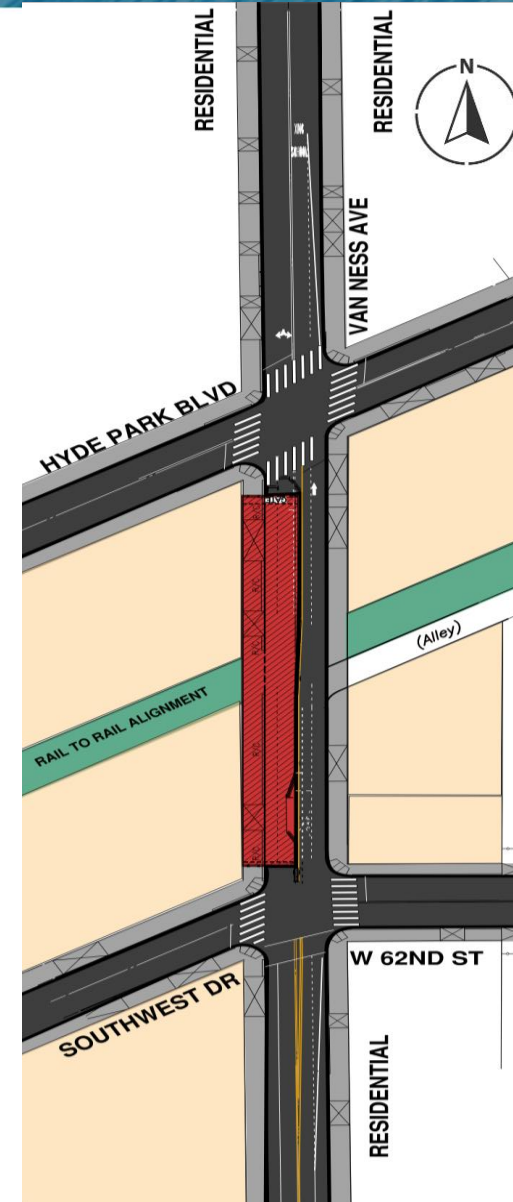
- > **When:** As early as November 11, 2023
- > **Where:** Van Ness Av between Hyde Park Bl and Southwest Dr/62nd St.
- > **Duration:** approximately four months

What to Expect

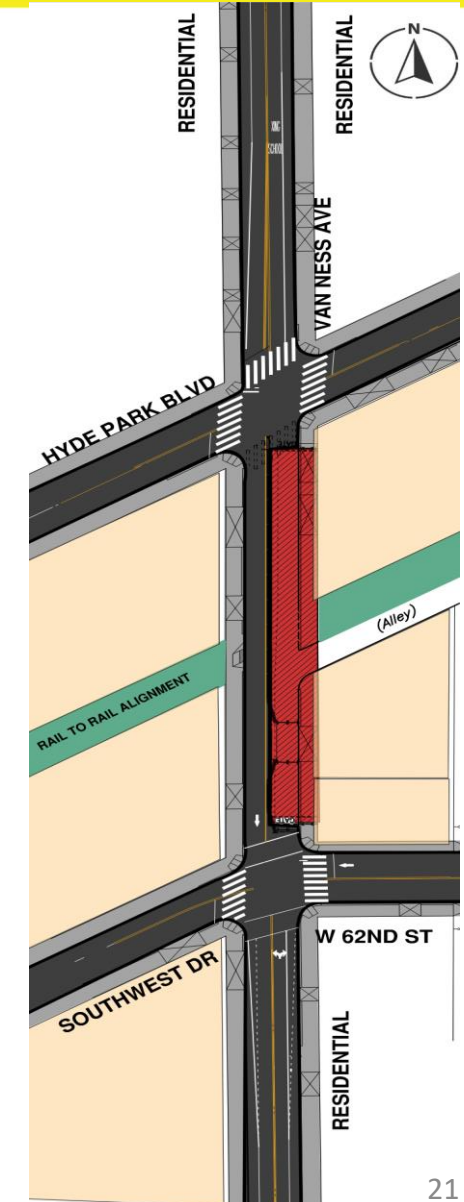
- > Directional closures of Van Ness Av
- > **Stage 1:** Directional closure and detour of southbound Van Ness Av between Hyde Park Bl and Southwest Dr/62nd St.
- > **Stage 2:** Directional closure and northbound Van Ness Av detour between Hyde Park and Southwest Dr/62nd St.

Work hours

- > Workdays from Monday to Saturday
- > The closure will be in place for the duration of the activity



Stage 1 Southbound



Stage 2 Northbound

On the Horizon: Compton Av Intersection Improvement

Contractor will begin the intersection improvement work

- > **When:** As early as November 17, 2023
- > **Where:** Compton Av at Slauson
- > **Duration:** approximately four months

What to Expect

- > Directional closures of Compton Ave
- > Stage 1: South directional closure of Slauson Av will be reduced to one lane in each direction
- > Stage 2: Northbound directional closure Slauson Av will be reduced to one lane in each direction

Work hours

- > Workdays from Monday to Saturday
- > The closure will be in place for the duration of the activity

On the Horizon: Slauson Av West of Denker Av Intersection Improvement

Contractor will begin the intersection improvement work

- > **When:** As early as November 4, 2023
- > **Where:** Slauson Av. West of Denker Av
- > **Duration:** approximately four months

What to Expect

- > Lane closures at Slauson Ave-West of Denker.
- > **Stage 1:** Eastbound and westbound lane reduction to one lane on Slauson Av between Western Av and Denker Av.
- > **Stage 2:** Eastbound and westbound lane reduction to one lane on Slauson Av between Western Av and Denker Av.
- > **Stage 3:** Eastbound and westbound lane reduction to one lane on Slauson Av between Western Av and Denker Av.

Work hours

- > Workdays from Monday to Saturday
- > The closure will be in place for the duration of the activity

On the Horizon: Broadway Intersection Improvement

Contractor will begin the intersection improvement work

- > **When:** As early as December 1, 2023
- > **Where:** Broadway at Slauson Av.
- > **Duration:** approximately five months

What to Expect

- > Lane closures at the intersection of Broadway and Slauson Av
- > **Stage 1:** Center lanes on Broadway north of Slauson Av will be closed
- > **Stage 2:** Northeast and Northwest corners lane reductions on Broadway and Slauson Av
- > **Stage 3:** Southeast and Southwest corners, lane reductions on Broadway and Slauson Av

- > **Work hours**
- > Workdays from Monday to Saturday
- > The closure will be in place for the duration of the activity

On the Horizon: Cimarron Av

Contractor will begin the intersection improvement work

- > **When:** TBD
- > **Where:** Cimarron Av between north 62nd St.
- > **Duration:** 1 month

What to Expect

- > Parking restrictions will be in place on both sides of Cimarron Av

Work hours

- > 7:00 am to 4:00 pm Monday – Friday
- > The closures will be in place for the duration of the work



On the Horizon: Haas Av

Contractor will begin the intersection improvement work

- > **When: TBD**
- > **Where: Haas Av between north 62nd St.**
- > **Duration: 1 month**

What to Expect

- > Parking restrictions will be in place on both sides of Haas Av

Work hours

- > 7:00 am to 4:00 pm Monday – Friday
- > The closures will be in place for the duration of the work



Stay In Touch



213.922.9228



r2r@metro.net



www.metro.net/projects/railtorivera/

The Project hosts quarterly community meetings

THANK YOU

A bright yellow speech bubble is centered on a solid blue background. The words "THANK YOU" are cut out of the bubble in a bold, blue, sans-serif font. The bubble has a pointed tail at the bottom right, and the cutouts of the letters reveal the blue background behind them.