



# North SFV Community Meeting

NORTH SAN FERNANDO VALLEY TRANSIT CORRIDOR ~ June 13, 2024





# Housekeeping



This is a webinar. Attendee cameras are off, and microphones are muted.



Submit your questions by using the Q&A feature



This meeting is being recorded. Video file will be posted on our website at [metro.net/northsfv](https://metro.net/northsfv)

# Agenda

Welcome and Introductions

Metro Updates

NSFV Project Background

Project Elements and Overview

Bus Service Improvements and updates

Next steps



# METRO UPDATES



Metro

# Metro's Three Priorities for Addressing Public Safety



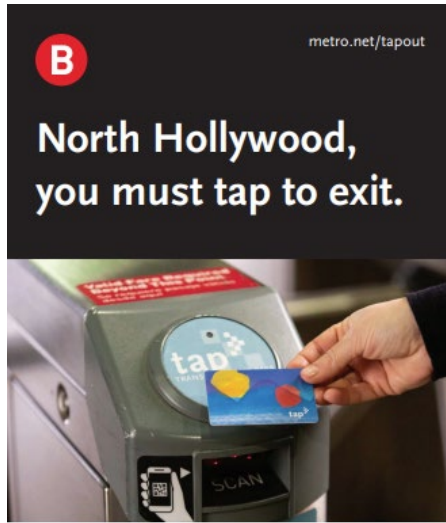
1. Increase the visible presence of uniformed personnel
2. Enhance access control
3. Strengthen partnerships to address societal issues

# Increasing Our Visible Presence



- Metro has begun surging presence of Metro Transit Security and Metro Ambassadors by 20%.
  - Increased teams riding on buses and trains
  - Increased issue reporting
  - Increased fare and code of conduct enforcement
- Contracted law enforcement partners are expanding their visible presence.

# Station Access Control



Starting **May 28, 2024**, turnstiles will not open unless you tap your valid TAP card when you enter **and exit** North Hollywood Station.

Learn more at [metro.net/tapout](https://metro.net/tapout).

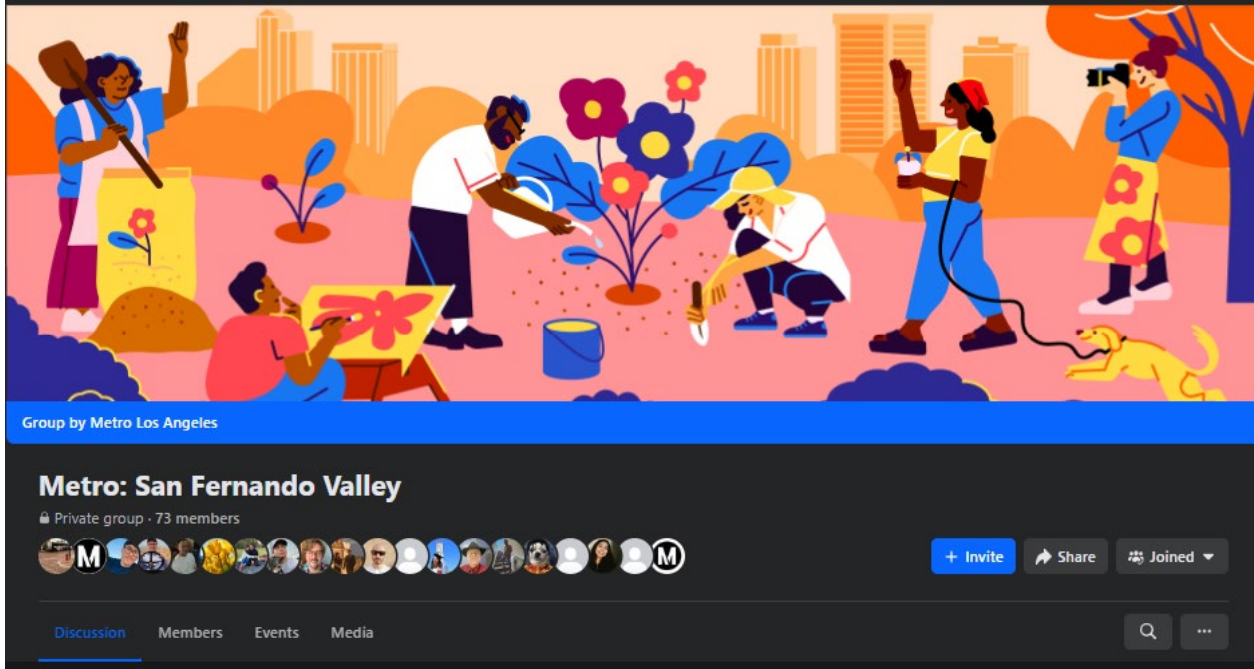
The system is safer when everyone on it is there for its intended purpose: transit.

Metro is:

- >Increasing fare enforcement through the surge of Transit Safety Officers on the system.
- >Launching a pilot program at the North Hollywood B Line station fare gates to see if requiring people also to tap OUT would help confirm that valid fare was paid, improving fare compliance.
- >Right-sizing stations through interventions that improve lighting and control access to space.
- >Evaluating possible fare gate improvements.

# Facebook Group

> Metro: San Fernando Valley



# Project Background

## > 2016 – Measure M Project

- Description: North San Fernando Valley Bus Rapid Transit (BRT) Improvements
- \$180 million in Measure M Funds and opening in 2025

## > 2019 – Completed Alternatives Analysis (AA)

- Include Roscoe BI & NextGen in the study of alternatives
  - NextGen Bus Plan is the Board-approved restructuring of Metro's bus system to make it more competitive with auto by improving reliability and frequency of service
- Nearly 4,400 comments received
- Based on comments received on AA and coordination with NextGen, a new proposed BRT Network Improvements option identified



# Project Background continued

- > 2019-2022 – Environmental Review and Community Outreach
  - Additional technical analysis and community outreach of proposed project
  - Overall support for BRT Network Improvements
  - Explanation of key project elements needed (e.g. bus bulbs, zero-emission buses, bus priority lanes)
  - Completed Project Business Case and Racial Equity Analysis for Senate Bill 288 CEQA Statutory Exemption



# Project Elements and Costs



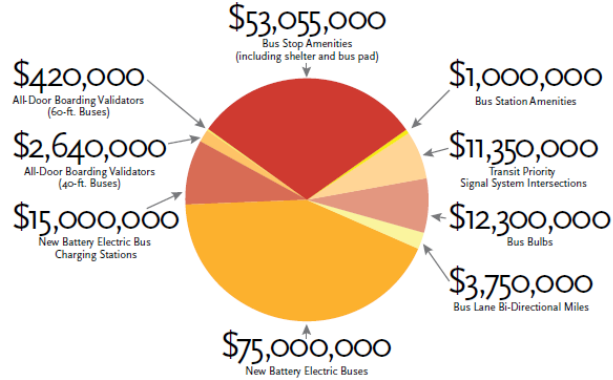
Transit Signal Priority



Enhanced Stops with Branding



Electric Buses with All-Door Boarding



Bus Shelters



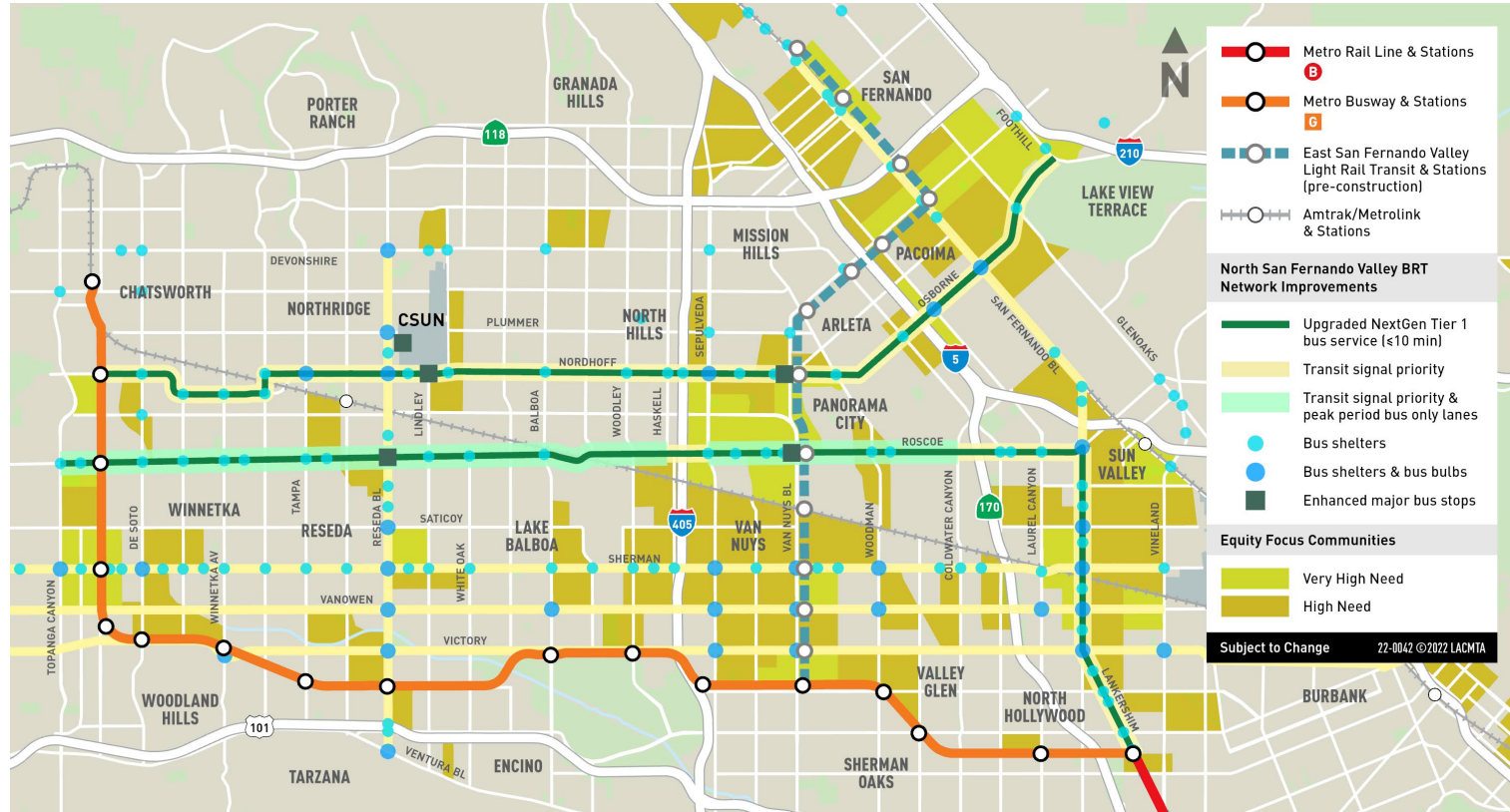
More Frequent Service



Peak-Hour Bus Only Lanes

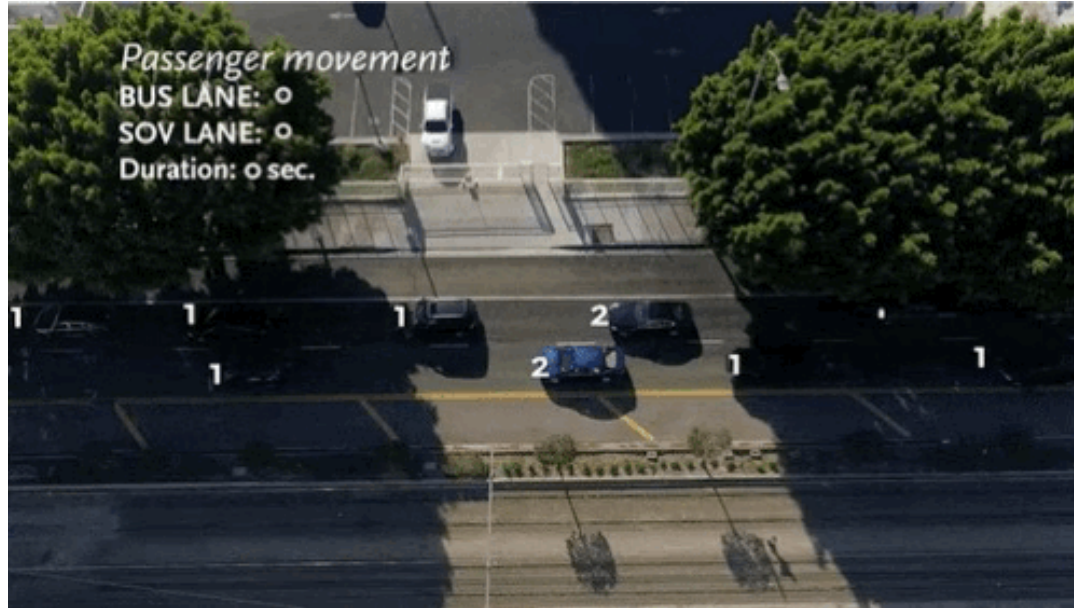


# North San Fernando Valley Transit Corridor Network Improvements



# Bus Priority Lanes

> Improve bus speeds by 15% or more, increase service frequency and reliability, and move more people without adding more infrastructure



# How Bus Lanes Would Work

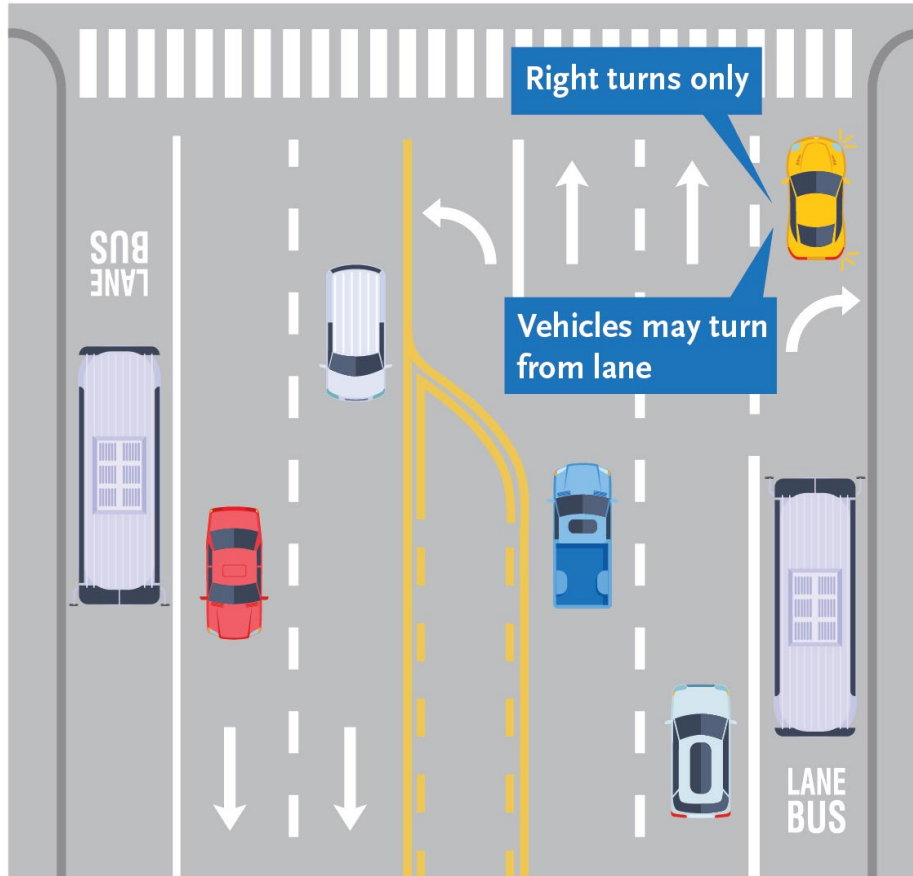
- > Converts **curb lanes** into bus priority lanes

Extend parking restrictions on Roscoe Bl between Topanga Canyon Bl and Coldwater Canyon Av:	
Current	New
7am - 9am	7am - 10am
4pm - 7pm	3pm - 7pm

- > Buses run every 10 minutes during peak commute hours
- > Street parking would remain available:
  - During weekday off-peak hours (mid-day)
  - Weekday evenings
  - On weekends and observed holidays



# Interacting with a Bus Lane



# Benefits to Street Users

- > **Taking Transit:** Improves speed, frequency & reliability of bus service
- > **Walking:** Improves safety of crossing the street and walking to nearby bus stops
- > **Driving:** Reduces need for buses to mix with vehicles in travel lanes **AND** maintains existing mid-day, overnight, weekend/observed holiday street parking for residents and visitors
- > **Biking:** People on bikes can use the bus priority lanes when needed



# North San Fernando Valley Transit Corridor

**Effective with the June 23 Service Change program NSFV key corridor Lines 152 and 166 will begin operating 10-minute service during the busiest hours:**

- Line 152 (Roscoe Bl) will operate 7 additional end-to-end weekday trips which will result in a 10 min headway window in the eastbound 7:00AM hour, eastbound 3:00PM & 4:00PM hours, and westbound 7:00AM hour
- Line 166 (Nordhoff St) will operate 8 additional end-to-end weekday trips which will result in a 10 min headway window in the eastbound 4:00PM & 5:00PM hours, and westbound 6:00AM & 7:00AM hours
- Go to [MyBus.Metro.net](https://www.metro.net/riding/mybus) for all upcoming route changes effective June 23, 2024



# Roscoe Bl: Bus Lanes Striping

Work will begin on Roscoe Bl, as early as **June 17** with anticipated completion in four months

Monday through Saturday

- 1am to 6am for lane striping
- 7am to 1pm for sign installations
- Temporary parking restrictions will be enforced on a block-by-block basis during restriping activities.
- Temporary signage will offer detour information for pedestrians, cyclists, and motorists.

Work will be done in phases as follows:

- Roscoe Bl eastbound from Topanga Canyon to I-405
- Roscoe Bl eastbound from I-405 to Coldwater Canyon
- Roscoe Bl westbound from Coldwater Canyon to I-405
- Roscoe Bl westbound from I-405 to Topanga Canyon



# North San Fernando Valley Transit Corridor Project Contacts



Glyssa Robles  
Principal Community Relations Officer



Tito Corona  
Senior Community Relations Manager

## Project Hotline



213.418.3082



[communityrelations@metro.net](mailto:communityrelations@metro.net)



[metro.net/northsfv](http://metro.net/northsfv)

# Using Zoom & Submitting Questions



Submit your questions by using the Q&A feature



This meeting is being recorded. Video file will be posted on our website at [metro.net/northsfv](https://metro.net/northsfv)



213.418.3082



[communityrelations@metro.net](mailto:communityrelations@metro.net)



[metro.net/northsfv](https://metro.net/northsfv)

**Thank you!**



**Metro**