



# Next stop: a new way to ride between NoHo and Pasadena.

NOHO TO PASADENA TRANSIT CORRIDOR



Public Scoping Meeting





# Welcome/*Bienvenidos*/Բարիգալուստ

Thank you for joining us. *Gracias por reunirse con nosotros.* Շնորհակալ ենք մեզ միանալու համար:

## Agenda/*Programa*/Օրակարգ

1:00 – 1:20pm

Open House/*Exhibición Abierta*/  
“Բաց դռների օր”

1:20 – 1:45pm

Presentation/*Presentación*/Պրեզենտացիա

1:45 – 3:00pm

Public Comment/*Comentario Público*/  
Հարցուպատասխան



# Welcome/*Bienvenidos*/Բարիգալուստ

Thank you for joining us. *Gracias por reunirse con nosotros.* Շնորհակալ ենք մեզ միանալու համար:

## Agenda/*Programa*/Օրակարգ

5:30 – 5:50pm

Open House/*Exhibición Abierta*/  
“Բաց դռների օր”

5:50 – 6:15pm

Presentation/*Presentación*/Պրեզենտացիա

6:15 – 7:30pm

Public Comment/*Comentario Público*/  
Հարցուպատասխան



# Welcome/*Bienvenidos*/Բարիգալուստ

Thank you for joining us. *Gracias por reunirse con nosotros.* Շնորհակալ ենք մեզ միանալու համար:

## Agenda/*Programa*/Օրակարգ

6:00 – 6:20pm

Open House/*Exhibición Abierta*/  
“Բաց դռների օր”

6:20 – 6:45pm

Presentation/*Presentación*/Պրեզենտացիա

6:45 – 8:00pm

Public Comment/*Comentario Público*/  
Հարցուպատասխան



# Contact/Contáctenos/Հետադարձ կապ

Contact us/Comuníquese con nosotros/Եղե՛ք մեզ հետ կապի մեջ

Metro invites you to stay involved and share your feedback.

*Metro los invita a participar y compartir sus comentarios.*

Մետրոն հրավիրում է Ձեզ մնալ ներգրավված և կարծիք հայտնել:


 213.418.3228

 [nohopasbrt@metro.net](mailto:nohopasbrt@metro.net)

 [metro.net/nohopasbrt](http://metro.net/nohopasbrt)

 [@metrolosangeles](https://twitter.com/metrolosangeles)

 [losangelesmetro](https://www.facebook.com/losangelesmetro)

 Attention: Scott Hartwell  
Metro  
One Gateway Plaza  
Mail Stop: 99-22-6  
Los Angeles, CA 90012



Comments for the Draft Environmental Impact Report (DEIR) will be accepted during the public scoping period that closes on July 31, 2019.

*Los comentarios en relación con el Informe de Impacto Ambiental (DEIR, por sus siglas en inglés) se recibirán durante el periodo público de estudio de impacto que cierra el 31 de julio de 2019.*

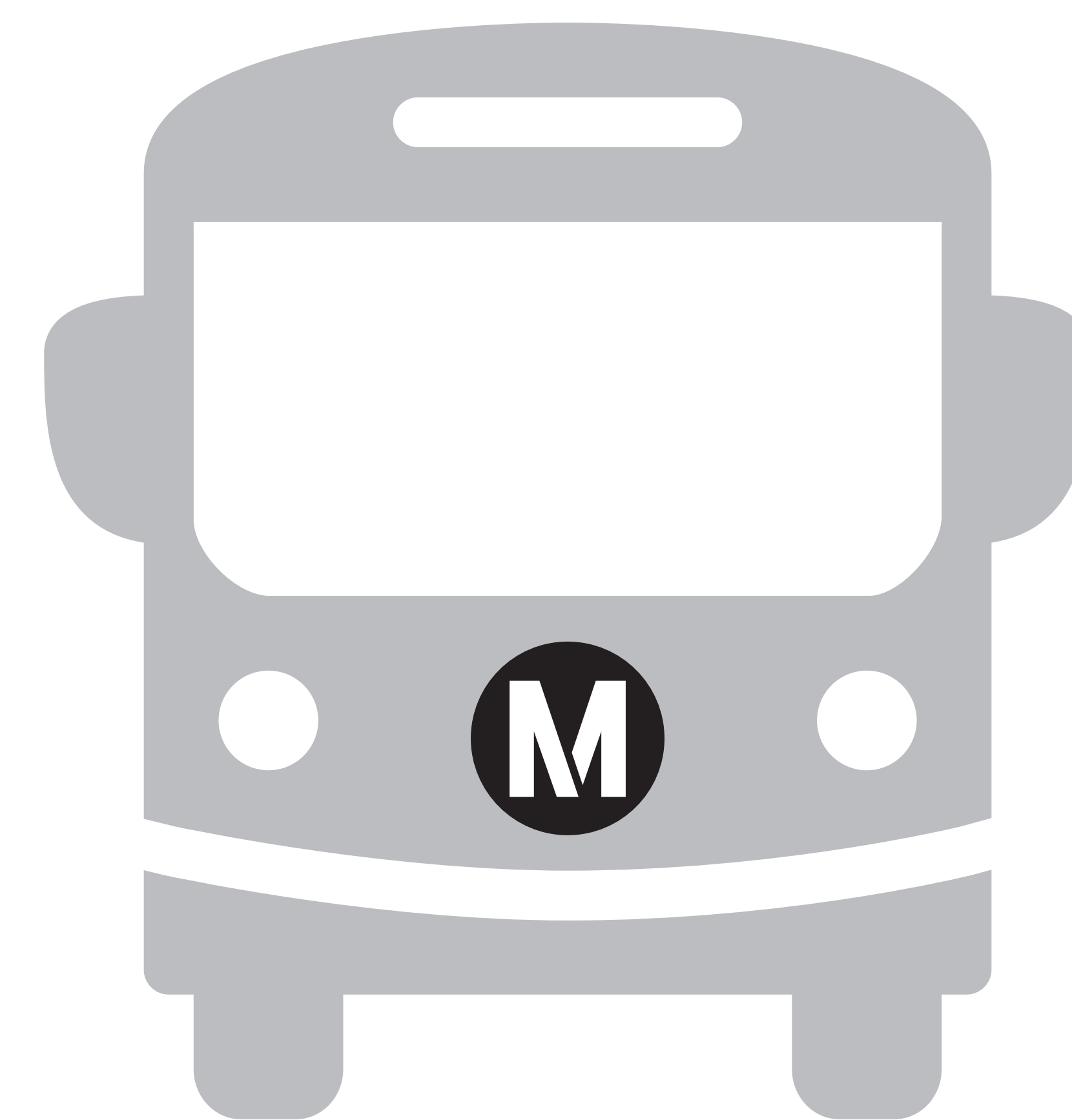
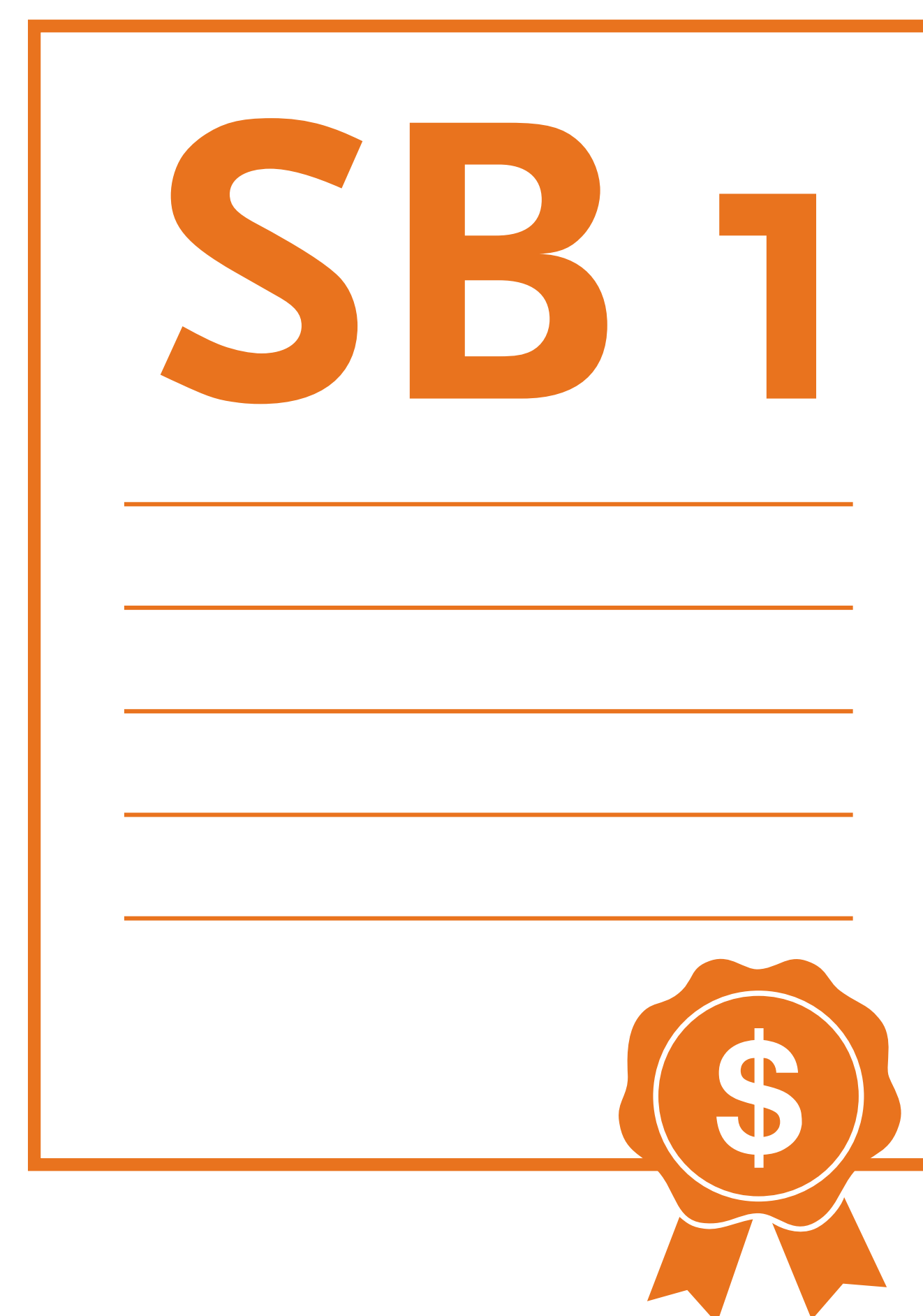
Բնապահպանության ազդեցության գեկույցին առնչվող մեկնաբանությունները կընդունվեն հանրային քննարկման փուլում մինչև 2019-ի Հուլիսի 31-ը:



# Project Funding



+



**\$267 Million**  
Project Funding



# Environmental Study Topics

Transportation

Noise

Air Quality

Recreation

Geology / Soils

Hydrology / Water  
Quality

Cultural  
Resources

Greenhouse  
Gas Emissions

Land Use /  
Planning

Aesthetics

Population / Housing

Mineral  
Resources

Agriculture / Forestry  
Resources

Wildfires

Energy

Utilities / Service  
Systems

Biological  
Resources

Tribal Cultural  
Resources

Public  
Services

Hazards and Hazardous  
Materials

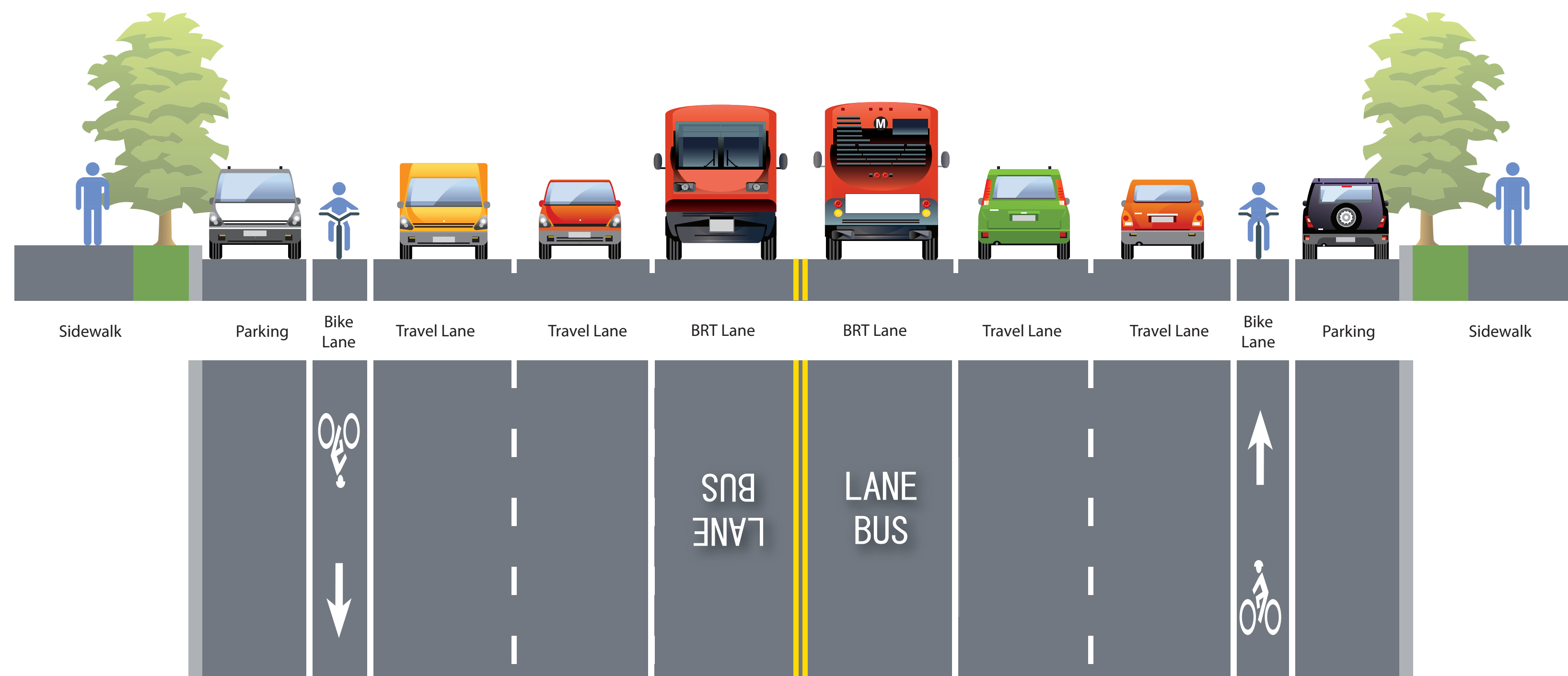


**Metro**<sup>®</sup>

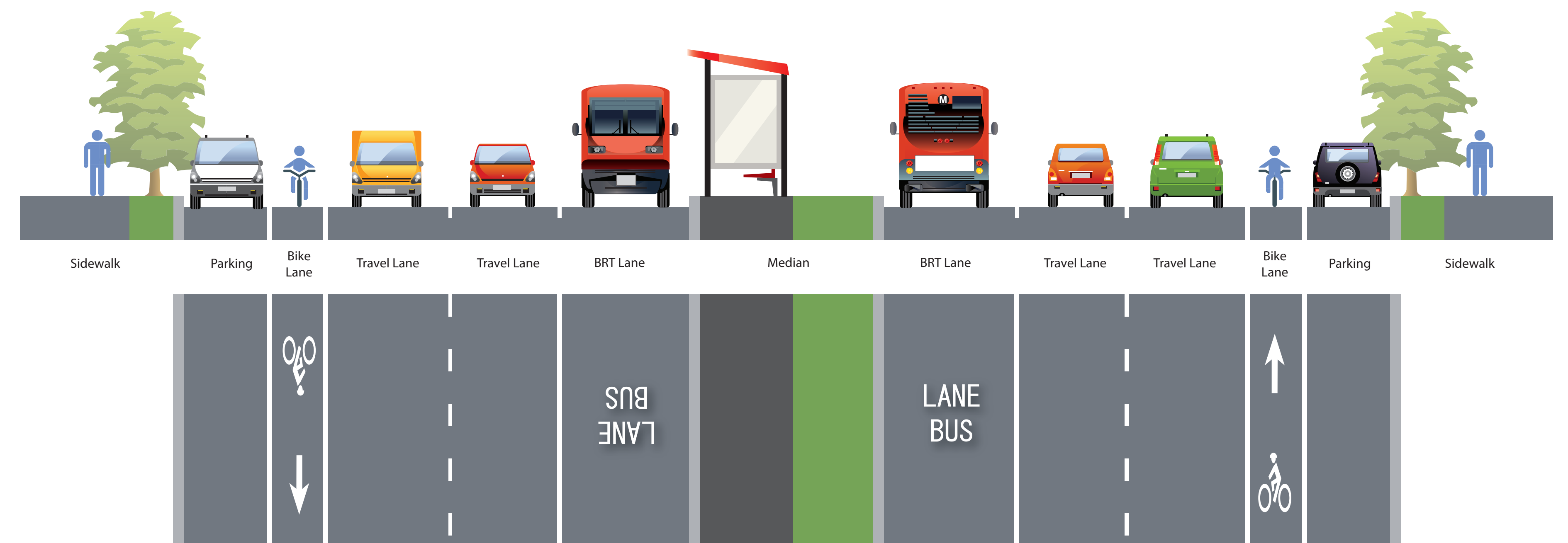


# Examples of Bus Lane Configurations

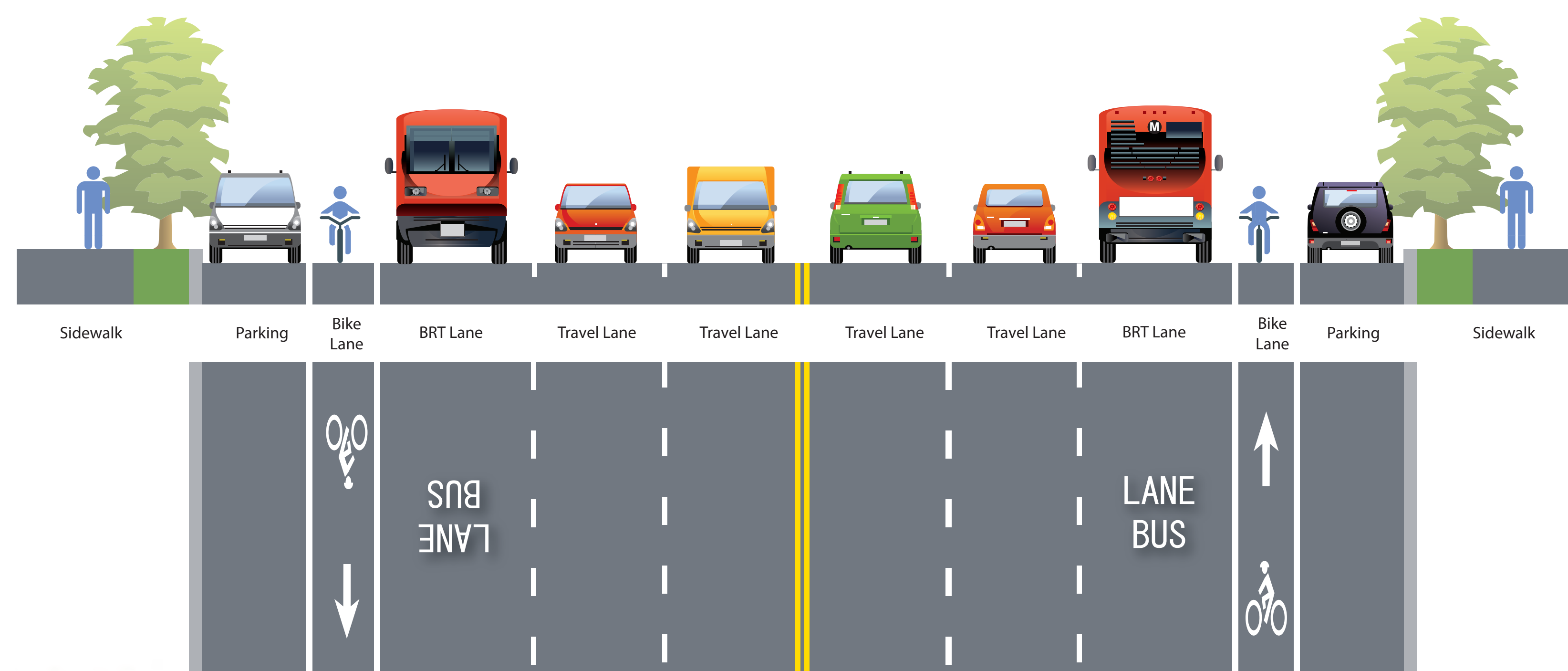
## CENTER RUNNING



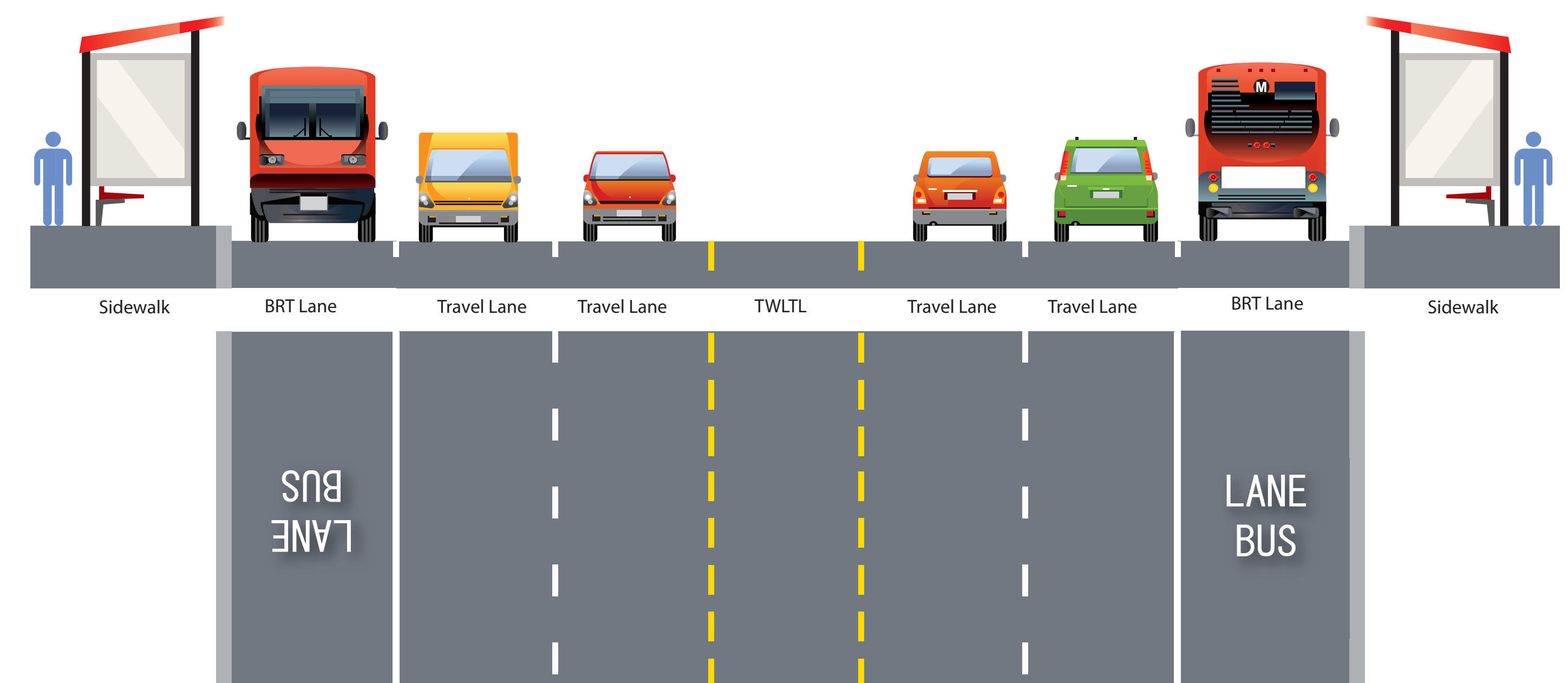
## MEDIAN RUNNING



## SIDE RUNNING



## CURBSIDE RUNNING



Metro®



## Project Description

- ✓ Project corridor is approximately **18 miles** from North Hollywood through Burbank, Glendale and Eagle Rock to Pasadena
- ✓ Key project elements may include: dedicated bus lanes, stations with amenities, all-door boarding, high frequency service with limited stops, transit signal priority and branded vehicles and stations
- ✓ Bus lane options could include: **curb-running, side-running** or **median/center-running**



# Purpose of Scoping

## What is Scoping?

- > Present the purpose of the project
- > Identify the project goals and objectives
- > Define the alternatives under consideration
- > Determine major issues for environmental analysis
- > Obtain public and agency input

## How can you get involved?

- > Provide comments and project relevant information
- > Help us understand what we should study
- > Keep up to date on the project via our contact list and website at [metro.net/nohopasbrt](http://metro.net/nohopasbrt)



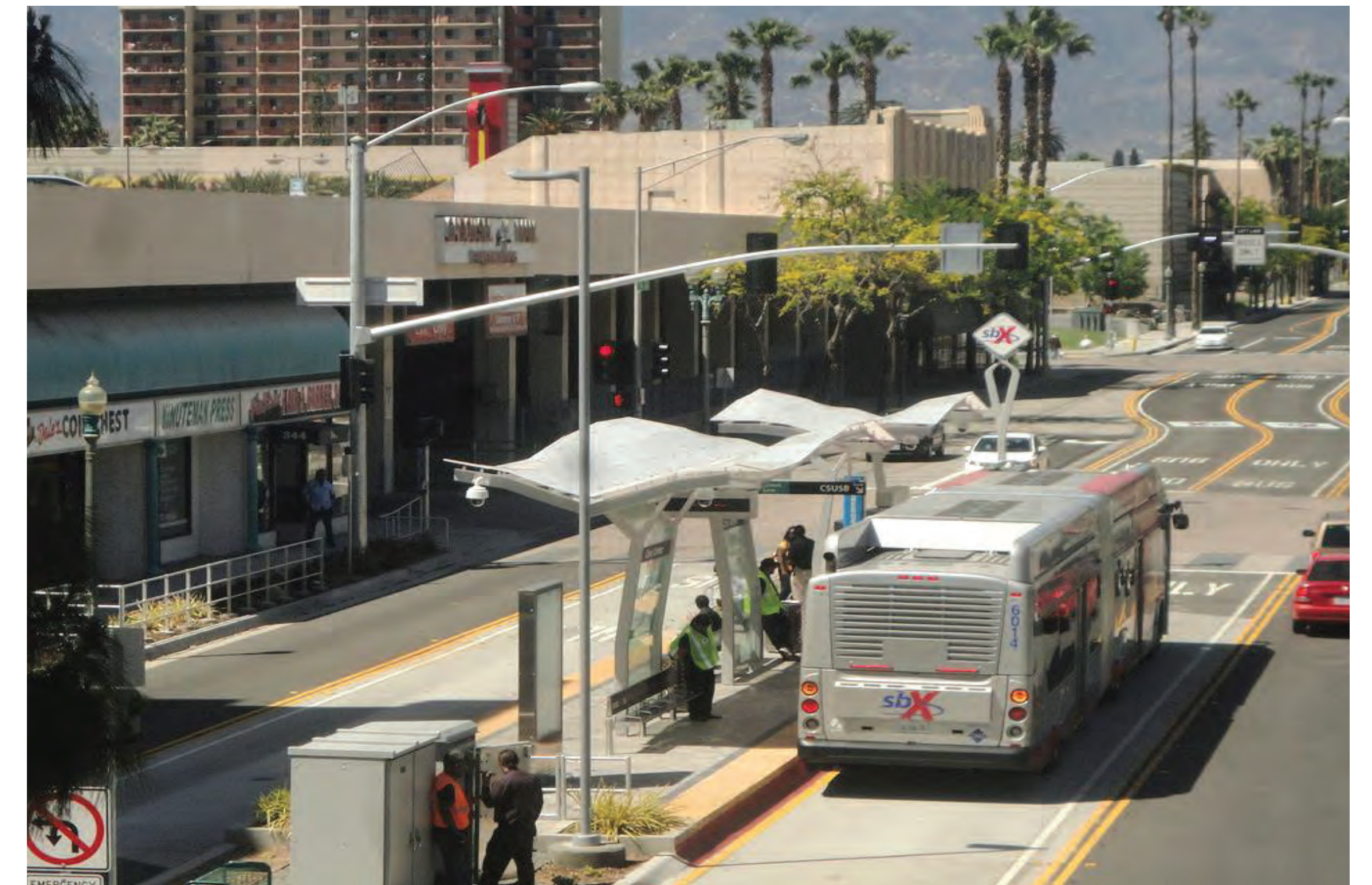
# Common BRT Elements



Comfortable, Branded Vehicles



Additional Branding Elements



Running Ways



Transit Signal Priority/Faster Service



Enhanced Stations/Limited Stops



Off-Vehicle Fare/All Door Boarding



# Other BRT Systems



Metro Orange Line



Metro Silver Line



Metro Wilshire BRT



RTC Transit, Las Vegas, NV



SBX, San Bernardino, CA



Pulse, Richmond, VA



## Key Project Benefits

- ✓ Provide a **premium service** to retain and attract new riders with improved **comfort** and **convenience**
- ✓ Create **equitable** transit **access** to major activity and employment centers
- ✓ Enhance **connectivity** to regional transit network
- ✓ Provide opportunities to support community plans and **Transit Oriented Communities**
- ✓ Improve **quality of life** and support **sustainability**



Metro®



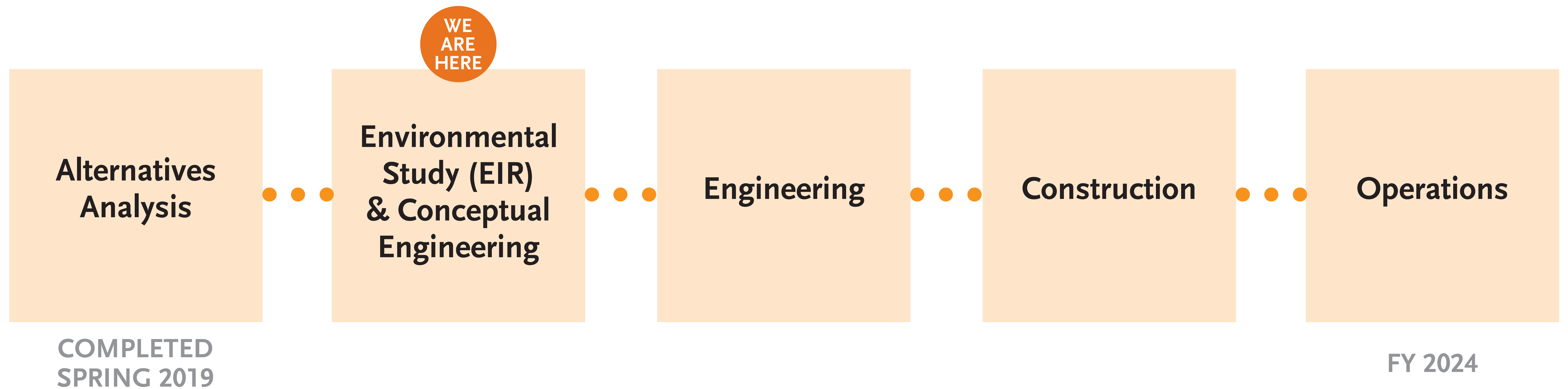
# Environmental Timeline



Ongoing community involvement is vital to the planning and environmental process



# Project Development Process



Ongoing community involvement is vital to the planning and environmental process



# Existing Metro Services in Study Area

