



I-710 SOUTH CORRIDOR PROJECT

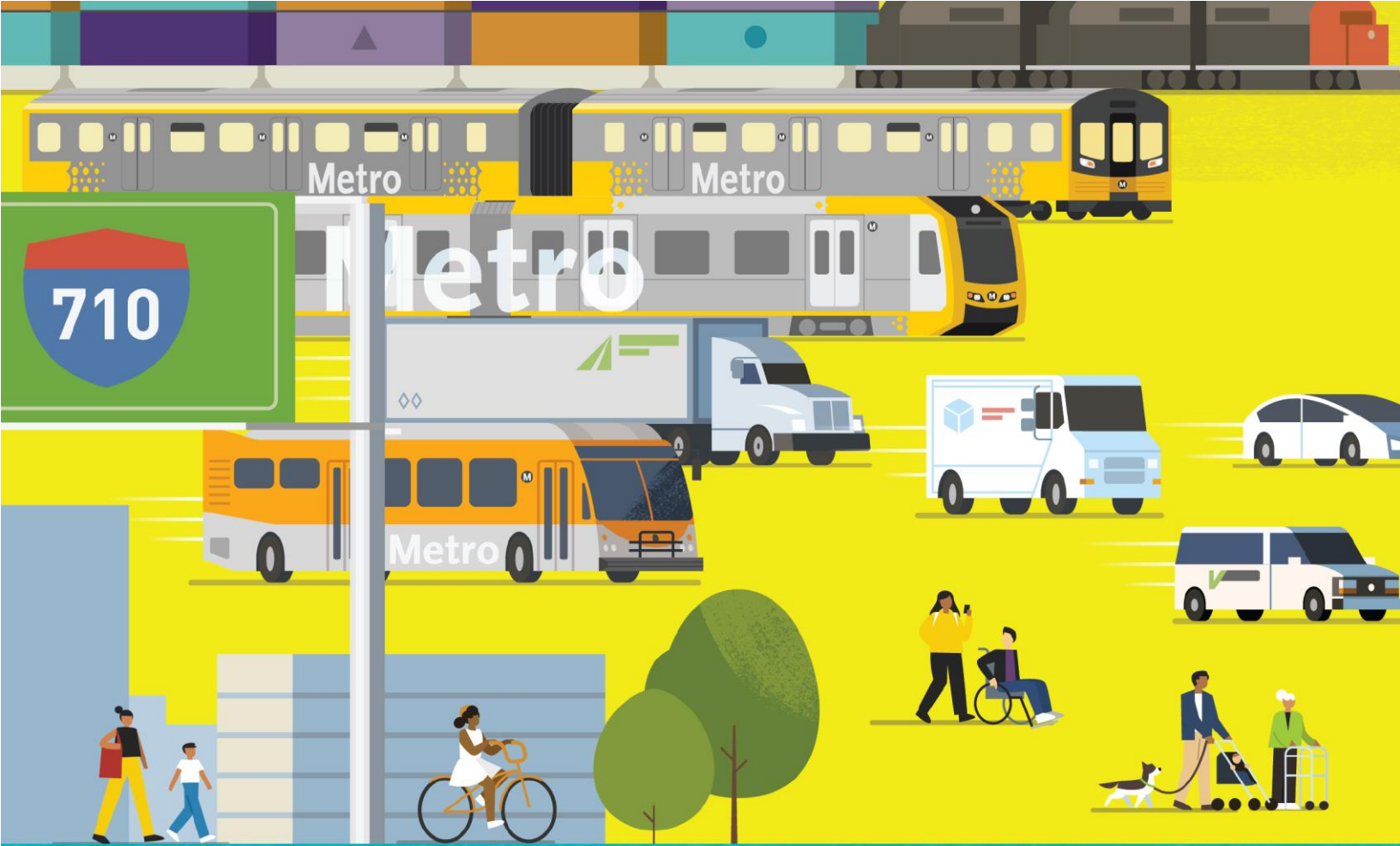
Multimodal Strategies, Projects & Programs Public Workshop #2

Table of Contents

Multimodal Strategies, Projects & Programs Public Workshop #2 Summary Report

Appendix A – Meeting Agenda

Appendix B – Meeting Presentation



I-710 SOUTH CORRIDOR PROJECT

Multimodal Strategies, Projects & Programs Public Workshop #2 Summary

September 17, 2022



Multimodal Strategies, Projects & Programs Public Workshop #2

ATTENDEES

TASK FORCE MEMBERS

Community-Based Organizations and Advocacy Groups

Ambar Rivera, Researcher, Communities for a Better Environment (CBE)

Environmental Organizations

Fernando Gaytan, Senior Attorney, Earthjustice

Natalia Ospina, Project Attorney of Environmental Justice, Natural Resources Defense Council (NRDC)

Local Jurisdictions

Luke Klipp, Senior Transportation Deputy, Los Angeles County Supervisorial District 4

Viviana Gomez, Transportation Deputy, County of Los Angeles, Supervisorial District 4

Community Leadership Committee

Natalie Diaz Rubio, Bell Gardens

Clara Solis, Long Beach

Tiesha Davis, San Pedro

Project Team

Michael Cano, Executive Officer of Countywide Planning & Development, Metro

Lilian De Loza-Gutierrez, Director of Community Relations, Metro

KeAndra Cylear Dodds, Executive Officer of Equity and Race, Metro

Laura Adleman, Senior Outreach and Engagement Specialist, AECOM

Erika Morales, Partner, Morales + Morales

Robert Calix, Cal Strategic Management

Maya Pogoda, Senior Executive, GF Bunting + Co.

Susan DeSantis, Senior Project Manager, Arellano Associates

Melissa Holguin, Senior Project Manager, Arellano Associates

Laura Herrera, Deputy Project Manager, Arellano Associates

Adrian Farran, Project Coordinator, Arellano Associates

Allison Crook, Assistant Project Coordinator, Arellano Associates

Eric Davidian, Assistant Project Coordinator, Arellano Associates

Introduction

The Los Angeles County Metropolitan Transportation Authority (Metro) and the California Department of Transportation (Caltrans) District 7 initiated the I-710 South Corridor Task Force (710 Task Force) to develop a community-supported, regionally significant, multimodal approach to addressing major mobility, safety, air quality, and equity needs for moving people and goods through the I-710 South Corridor between the Ports of Los Angeles and Long Beach and State Route 60. The 710 Task Force will review and assess the purpose and need for investment in the I-710 corridor, develop multi-modal improvement strategies, identify programs and projects to advance

Multimodal Strategies, Projects & Programs Public Workshop #2

these strategies, create an investment and implementation plan, and provide recommendations to the Metro Board in 2023.

The 710 Multimodal Strategies, Projects & Programs Public Workshop #2 was held virtually on Saturday, September 17, 2022. The intent of this meeting was:

- (1) Present a Project Update
- (2) Introduce the Multimodal Strategies, Projects & Programs (MSPP) phase
- (3) Demonstrate the Interactive Mapping Tool and Survey
- (4) Receive public input

Spanish interpretation was provided simultaneously for this meeting. Prior to the meeting, participants received the agenda (**Appendix A**) and presentation (**Appendix B**).

Welcome, Introductions, Agenda Review, and Meeting Objectives

- > Erika Morales, Meeting Facilitator, opened the meeting and shared an overview of the meeting objectives as well as the meeting agenda.
- > Ms. Morales facilitated two polls to understand where stakeholders reside and what meetings they have participated in previously.

Zoom Poll #1

- > Poll Question: “What city do you live, work, or spend most of your time in?”
 - Southern Segment- Lakewood, Signal Hill, Long Beach, San Pedro, Wilmington, Ports of LA and Long Beach, Compton, and Carson
 - Northern Segment- East LA, Commerce, Montebello, Vernon, Boyle Heights
 - SELA- Maywood, Huntington Park, Bell, Cudahy, Bell Gardens, South Gate, Downey, Lynwood, Paramount, Bellflower
- > The results were: 3 (50%) live, work or spend most of their time in the Southern Segment, 0 (0%) in the Northern Segment, and 3 (50%) in SELA (Southeast Los Angeles)

Zoom Poll #2

- > Poll Question: “What types of 710 Task Force Meetings and activities have you participated in before?”
- > The results were: 3 (25%) Task Force Meetings, 4 (33%) Community Leadership Committee Meetings, 2 (16%) Listening Sessions, 2 (16%) Online Surveys, and 1 (1%) Office Hours.

1. Agenda Item #1: Project Update

Multimodal Strategies, Projects & Programs Public Workshop #2

Vision Statement & Goals recap

- > Michael Cano, Executive Officer of Countywide Planning (Interim), shared a project update and shared that the Vision Statement, Guiding Principles, and Goals approved by the Task Force will be shared with the Metro Board for a vote on Thursday, September 22nd.
- > Mr. Cano shared that the project is now in the Multimodal Strategies Projects & Programs phase.

Introduction of Next Phase: Multimodal Strategies, Projects & Programs (MSPP)

- > Ernesto Chaves, Director of Highway Programs, shared a description and examples of multimodal projects and programs.
- > Ms. Morales invited meeting attendees to participate in the Zoom polls.

Zoom Poll #3

- > Poll Question: “What's your primary mode of travel in the corridor?”
- The results were: 1 (17%) indicated their primary mode of travel was the Bus, 0 (0%) Rail, 5 (83%) Car, 0 (0%) Carpooling, and 0 (0%) Walking, 0 (0%) voted Biking, 0 (0%) voted Paratransit, and 0 (0%) voted Other.

Project Hub & Interactive Mapping Tool and Survey

- > Lilian De Loza-Gutierrez, Director of Community Relations, shared an overview of the Information Hub (<http://www.metro.net/710-hub>) and the interactive mapping tool (<https://arellano.mysocialpinpoint.com/metro-710-task-force/map#/sidebar/tab/about>) .
- > Ms. De-Loza Gutierrez shared that the mapping tool deadline will be extended to October 15 to maximize feedback and expand reach into the communities in the corridor.
- > Melissa Holguin, Senior Project Manager, Arellano Associates, provided a demonstration of how to access and maneuver the interactive mapping tool and how to access the survey.
- > Ms. Morales invited meeting attendees to participate in the Zoom polls.

Zoom Poll #4

- > Poll Question: What's your race/ethnicity?
 - The results were: 0 (0%) voted Asian/Pacific Islander, 2 (28.5%) Black/African American, 3 (43%) Latino/Hispanic, 0 (0%) Native American, and 2 (28.5%) White/Caucasian and 0 (0%) Other.

Zoom Poll #5

- > Poll Question: What is your total household earnings annually?

Multimodal Strategies, Projects & Programs Public Workshop #2

- The results were:
 - 0 (0%) Less than \$5,000
 - 0 (0%) \$10,000-\$14,999
 - 1 (33%) \$15,000-\$19,999
 - 0 (0%) \$20,000-\$24,999
 - 2 (66%) \$25,000-\$34,999
 - 0 (0%) \$35,000-\$49,999
 - 0 (0%) \$50,000-\$74,999
 - 0 (0%) \$75,000-\$99,999
 - 0 (0%) \$100,000-\$149,999
 - 0 (0%) \$150,000 or more.

2. Agenda Item #2: Interactive Breakout Sessions-Input on Interactive Mapping Tool and Survey

- > Due to the public workshop having limited attendees, Ms. Morales announced that there would not be breakout rooms by geography/language.
- > The goals that were most vital to meeting participants were:
 1. Air Quality
 2. Safety
 3. Mobility
 4. Community
- > Some highlights of the comments from the conversation were:
 - Creating more traffic calming measures & devices to improve traffic
 - Develop a solution to improve air quality along the corridor
 - Increasing a higher level of police presence to improve safety for riders
 - Implementing higher-quality HVAC systems on transit
 - Working with Metro to create an ambassador program in cities within the corridor
 - Developing more travel reduction strategies to decrease emissions
 - Bus priority lanes on local streets to improve bus travel times and reliability
 - Creating a designated lane for Zero-Emission Trucks

3. Agenda Item #3: Public Engagement Efforts

- > Ms. De-Loza Gutierrez discussed the following efforts the Task Force is making to increase public engagement during the Multimodal Strategies, Projects & Programs Phase:
 - Engaging schools, faith-based groups, and business groups
 - Establishing partnerships with community-based organizations
 - Social and Digital Media campaigns
 - Increasing notification flyer distribution within communities in the corridor

Multimodal Strategies, Projects & Programs Public Workshop #2

- > Ms. Cylear-Dodds further explained Metro’s CBO Partnering Strategy and how it will be implemented to engage stakeholders and identify strategies, projects, and programs in communities along the corridor to develop an Investment Plan
- > Ms. Morales invited meeting attendees to participate in additional Zoom polls.

Zoom Poll #6

- > Poll Question: Was this your first time participating in an I-710 South Corridor meeting?
 - The results were: 1 (20%) Yes, and 4 (80%) No

Zoom Poll #7

- > Poll #7: How did you hear about this event?
 - The results were: 1 (20%) Flyer, 2 (40%) Email, 0 (0%) Metro website, 1 (20%) Social Media, and 1 (20%) Family/Friend, and 0 (0%) Other.

4. Closing Remarks and Upcoming Meetings

- > Ms. Morales reviewed the upcoming Task Force meeting information and other key dates.
- > Ms. Morales encouraged meeting participants to contact Michael Cano should they have any questions or concerns.
- > The meeting adjourned at 12:00 pm.

Meeting Format Logistics

- | | |
|----------------------|-----------------------------|
| • Meeting Format: | Zoom Meeting |
| • Participants: | Task Force, CLC, and Public |
| • Interactive Tools: | Zoom Polls |



710 Task Force

I-710 South Corridor Multimodal Strategies, Projects & Programs Public Workshop Meeting #2
Agenda/Agenda de la Estrategias, Proyectos y Programas Multimodales Taller público #2
Saturday, September 17, 2022/ sábado, 17 de septiembre de 2022
10am-12pm

Interpretation in Spanish, Khmer, and Tagalog will be provided.
Se proporcionará interpretación en español, jemer y tagalo.

Meeting Link /enlace de reunión: <https://tinyurl.com/710-PW2>

Meeting ID / ID de reunión: 823 6891 4086

Passcode / Contraseña: 5851

Call-in: 213.338.8477

- 10:00 am** **Welcome and Agenda Review** (5 minutes)
Bienvenida y revisión de la agenda
- 10:05 am** **Agenda Item #1: Project Update** (25 minutes)
Punto 1 del orden del día: Actualización del proyecto
- 10:30 am** **Agenda Item #2: Interactive Breakout Sessions – Input on Interactive Mapping Tool and Survey** (60 minutes)
Punto 2 del orden del día: Sesiones interactivas de trabajo – Aportaciones sobre la herramienta de cartografía interactiva y la encuesta
- 11:30 am** **Return from Breakout Sessions – Report Outs** (20 minutes)
Regreso de las sesiones de trabajo – Reportar salidas
- 11:50 am** **Agenda Item #3: Public Engagement Efforts: CBO Partnering Strategy** (5 minutes)
Punto #3 de la agenda: Esfuerzos de participación pública: Estrategia de asociación de la CBO
- 11:55 am** **Closing, Upcoming Meetings, and Thank you** (5 minutes)
Próximas reuniones del Grupo de Trabajo del Corredor 710

*Please refer to the full meeting presentation for detailed agenda

**Consulte la presentación completa de la reunión para obtener una agenda detallada*



We're developing a new vision for the 710 corridor.

I-710 TASK FORCE



Metro

Welcome!

We will begin in a few moments.

Multimodal Strategies, Projects & Programs

Public Workshop

August-September 2022



Metro

Facilitator



Erika C.B. Morales

Partner, Morales + Morales Partners

Project Team



KeAndra Cylear Dodds

LA Metro, Equity and Race



Jessica Medina

LA Metro, Equity and Race



Michael Cano

LA Metro, Countywide Planning



Ernesto Chaves

LA Metro, Highway Programs



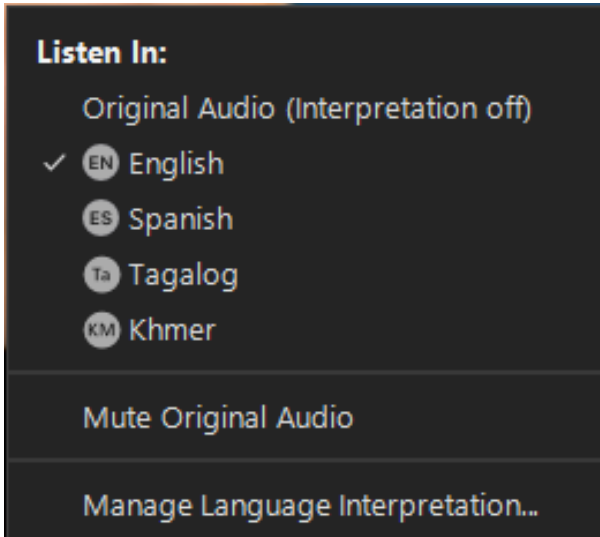
Lilian De Loza-Gutierrez

LA Metro, Community Relations



Robert Cálix

Cal Strategic Management, LLC



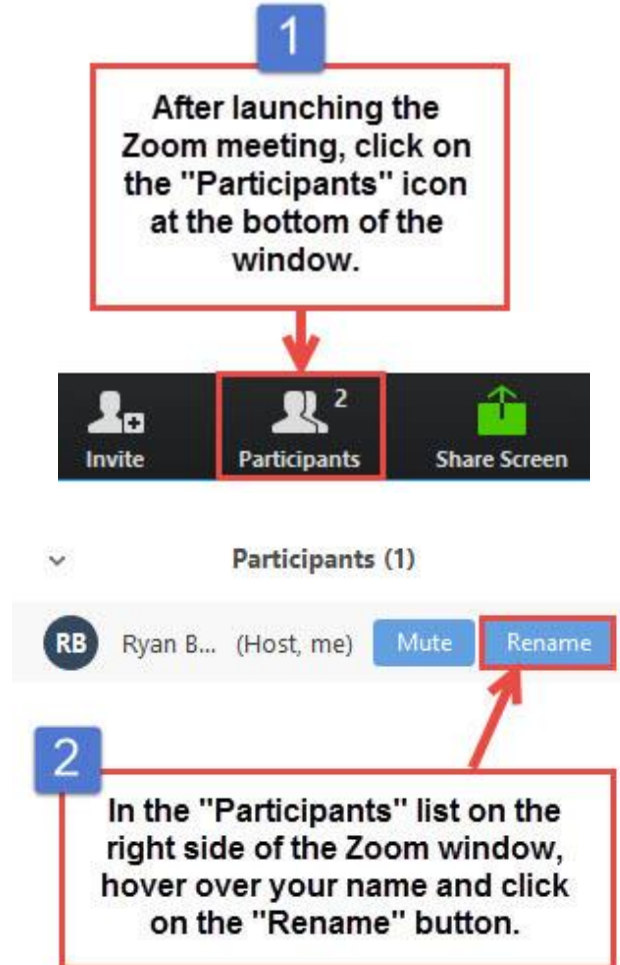
- > This meeting is transmitted in English, Spanish, Khmer and Tagalog.
 - > Everyone must choose the preferred language they would like to hear the meeting in
 - > Click the **Interpretation** icon in your meeting controls to enter an *English, Spanish, Tagalog, Khmer* room
 - > To hear the interpreted language only, click **Mute Original Audio** (Optional)
- > *Esta reunión se transmite en inglés, español, jemer y tagalo.*
 - > *Todos deben elegir el idioma preferido en el que les gustaría escuchar la reunión.*
 - > *Haga clic en el icono de Interpretación en los controles de su reunión para ingresar a una sala en de interpretacion en el inglés, el español, el jemer o tagalo.*
 - > *Para escuchar solo el idioma interpretado, haga clic en “Mute Original Audio” o “Silenciar audio original” (Opcional)*

Attendee Identification

Task Force Members: Name – Task Force

CLC Members: Name – CLC, Jurisdiction

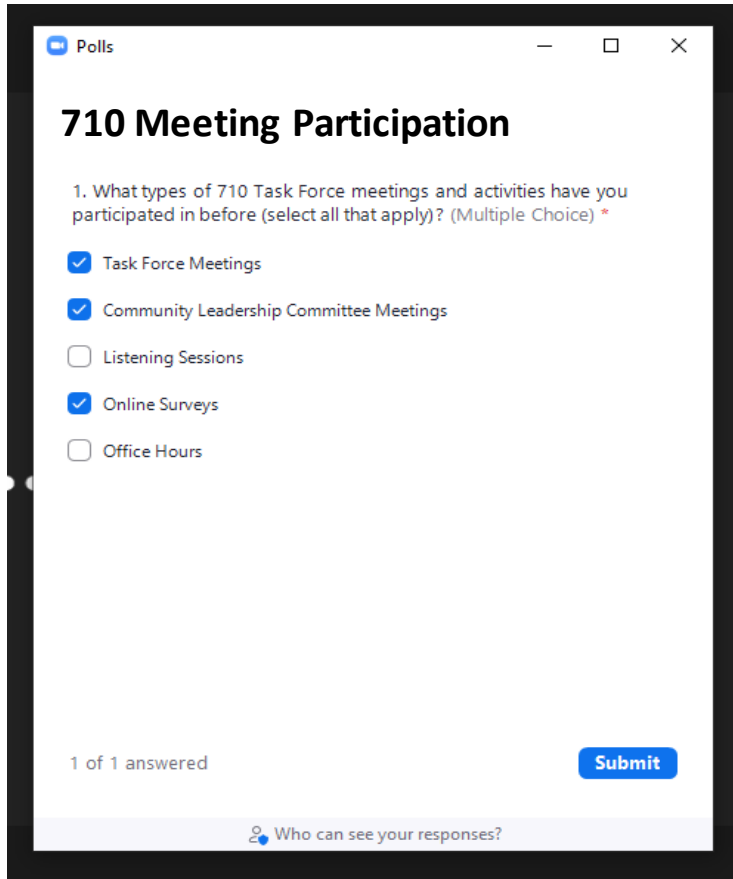
Public: Name – Home City



Zoom Protocols / *Protocolos de Zoom*

- > Click **Raise Hand** in your meeting controls or
 - > **Press*9** on the phone line.
 - > To lower your hand, click **Raise Hand** in your meeting controls.
 - > Comments & questions can also be provided in writing by using the **Q&A** function.
 - > The **Q&A** button is located on the control panel at the bottom of your screen.
 - > Tech Support - Phone: 323.609.3345
Monitoring, translation support
- > *Haga clic en “**Raise Hand**” o “**Levantar la mano**” en los controles de la reunión o*
 - > ***Presiona *9** en la línea telefónica.*
 - > *Para bajar la mano, haga clic en “**Raise Hand**” o “**Levantar la mano**” en los controles de la reunión.*
 - > *Los comentarios y las preguntas también se pueden proporcionar por escrito mediante la función de **Q&A**.*
 - > *El botón **Q&A** se encuentra en el panel de control en la parte inferior de la pantalla.*
 - > *Asistencia Tecnológica por teléfono al 323.609.3345*

Zoom Polls / Encuestas de Zoom



The screenshot shows a Zoom poll window titled "Polls". The poll is titled "710 Meeting Participation" and asks: "1. What types of 710 Task Force meetings and activities have you participated in before (select all that apply)? (Multiple Choice) *". There are five options with checkboxes: "Task Force Meetings" (checked), "Community Leadership Committee Meetings" (checked), "Listening Sessions" (unchecked), "Online Surveys" (checked), and "Office Hours" (unchecked). At the bottom left, it says "1 of 1 answered". At the bottom right, there is a blue "Submit" button. At the very bottom, there is a link icon and the text "Who can see your responses?".

- > A poll will appear on your Zoom screen
- > Click on whichever answer options you would like to submit. Some questions will have a single answer, some will give you the option to select multiple answers.
- > Click "Submit"
- > If you have any questions, please contact Tech Support - Phone: 323.609.3345

- > *Aparecerá una encuesta en su pantalla Zoom*
- > *Haga clic en la opción de respuesta que desee enviar. Algunas preguntas tendrán una sola respuesta, otras le darán la opción de seleccionar múltiples respuestas.*
- > *Haga clic en "Enviar"*
- > *Si tiene alguna pregunta, comuníquese con Soporte Técnico - Teléfono: 323.609.3345*

Meeting Objectives

- > Present Project Update
- > Introduce the Multimodal Strategies, Projects & Programs (MSPP) phase
- > Demonstrate Interactive Mapping Tool and Survey
- > Receive your feedback

Agenda

- 5:00pm Welcome and Agenda Review**
- 5:05pm Agenda Item #1: Project Update**
- 5:30pm Agenda Item #2: Interactive Breakout Sessions – Input on Interactive Mapping Tool and Survey**
- 6:30pm Return from Breakout Sessions – Report Outs**
- 6:50pm Agenda Item #3: Public Engagement Efforts: CBO Partnering Strategy**
- 6:55pm Closing, Upcoming Meetings and Thank you**

Ice Breaker – Zoom Poll

- > **What city do you live, work, or spend most of your time in?**
 - **Southern segment** – Lakewood, Signal Hill, Long Beach, San Pedro, Wilmington, Ports of LA and Long Beach
 - **Northern segment** – East LA, Commerce, Montebello, Vernon, Boyle Heights
 - **SELA** – Maywood, Huntington Park, Bell, Cudahy, Bell Gardens, South Gate, Downey, Lynwood
 - **Mid-Corridor** – Compton, Paramount, Carson, Bellflower



Ice Breaker – Zoom Poll

> **What types of 710 Task Force meetings and activities have you participated in before**

(select all that apply)?

- Task Force Meetings
- Community Leadership Committee Meetings
- Listening Sessions
- Online Surveys
- Office Hours
- Other
- None of the above

Agenda Item #1: Project Update

What We're Working Toward



Task Force Members and Working Groups

	AGENCY	LEAD
1	Access Services, Inc.	Randy Johnson
2	Alameda Corridor Transportation Authority (ACTA)	Michael Leue
3	Breathe Southern California	Tigran Agdaian
4	Burlington Northern Santa Fe (BNSF) Railway	Lena Kent
5	California Air Resources Board (CARB)	Robert Krieger
6	CALSTART	Alycia Gilde
7	City of Bell Gateway Cities Council of Governments (GCCOG) Ad Hoc Committee	Councilmember Ali Saleh
8	City of Commerce GCCOG Ad Hoc Committee	Mayor Oralia Rebollo
9	City of Cudahy GCCOG Ad Hoc Committee	Mayor Elizabeth Alcantar
10	City of Long Beach	Councilmember Suely Saro
11	City of Los Angeles	Dan Rodman
12	Coalition for Clean Air	Chris Chavez
13	Communities for a Better Environment (CBE)	Jennifer Ganata & Dilia Ortega (<i>co-leads</i>)
14	County of Los Angeles, Supervisorial District 1	Martin Reyes/Ben Feldman
15	County of Los Angeles, Supervisorial District 2	Lilly O'Brien-Kovari
16	County of Los Angeles, Supervisorial District 4	Luke Klipp
17	Earthjustice	Fernando Gaytan
18	East Yard Communities for Environmental Justice (EYCEJ)	Laura Cortez
19	Harbor Trucking Association (HTA)	Matt Schrap
20	International Brotherhood of Teamsters, Local Union 848	Eric Tate
21	LA County Business Federation (BizFed)	Chris Wilson
22	LA County Department of Public Works	Steve Burger
23	LA County Economic Development Corporation (LAEDC)	Stephen Cheung
24	LA Unified School District	Fidencio Gallardo
25	Legal Aid Foundation of LA-Long Beach (LAFLA-LB)	Ghirlandi Guidetti
26	Long Beach Alliance for Children with Asthma (LBACA)	Sylvia Betancourt
27	Long Beach Transit (LBT)	Marisol Barajas
28	METRANS Transportation Consortium	Dr. Genevieve Giuliano
29	Metrolink (Southern California Regional Rail Authority)	Roderick Diaz
30	National Resources Defense Council (NRDC)	Natalia Ospina
31	Pacific Merchant Shipping Association (PMSA)	Michele Grubbs
32	Port of Long Beach (POLB)	Commissioner Sharon Weissman
33	Port of Los Angeles (POLA)	Kerry Cartwright
34	South Coast Air Quality Management District (AQMD)	
35	Southeast Los Angeles (SELA) Collaborative	Dr. Wilma Franco
36	Southern California Association of Governments (SCAG)	Scott Strelecki
37	Union Pacific (UP) Railroad	Lupe Valdez
38	USC Equity Research Institute (ERI)	Edward Muna

- **Community Leadership Committee**
- **Equity Working Group**
- **Zero-Emission Truck Working Group**
- **Community Engagement Strategy Working Group**
- **Coordinating Committee**

Vision Statement

Vision

A concise statement that captures the collective aspirations, desires, and outcomes of the project

Vision:

Approved by the Task Force on July 11, 2022

An equitable, shared I-710 South Corridor transportation system that provides safe, quality multimodal options for moving people and goods that will foster clean air (zero emissions), healthy and sustainable communities, and economic empowerment for all residents, communities, and users in the corridor.

Guiding Principles

Guiding Principle

A value that guides all processes and outcomes through a cohesive and intentional framework

Equity

“A commitment to: (1) strive to rectify past harms; (2) provide fair and just access to opportunities; and 3) eliminate disparities in project processes, outcomes, and community results.”

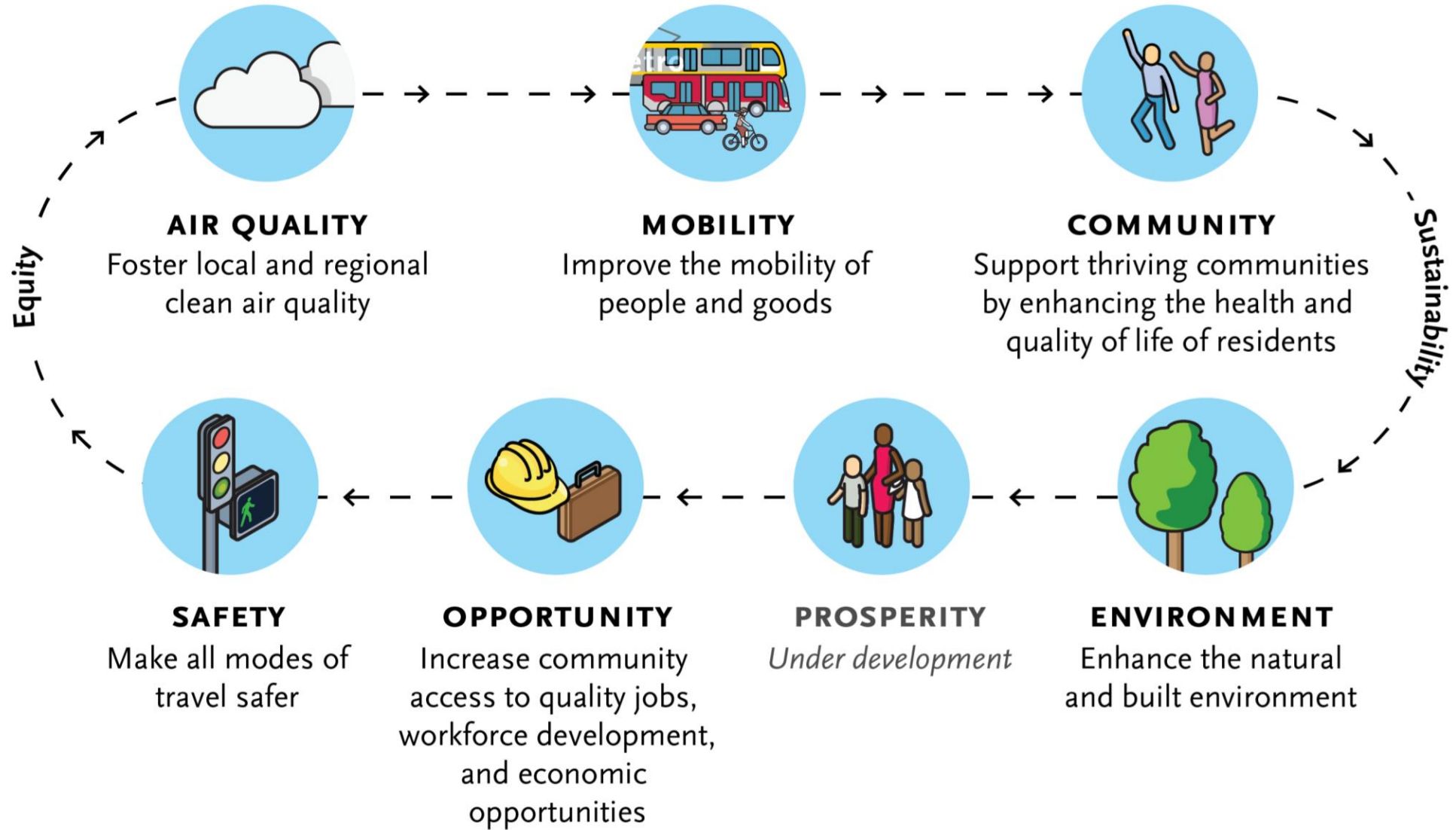
“The plan seeks to elevate and engrain the principle of Equity across all goals, objectives, strategies, and actions through a framework of Procedural, Distributive, Structural, and Restorative Equity, and by prioritizing an accessible and representative participation process for communities most impacted by the I-710.”

Sustainability

"Development that meets the needs of the present without compromising the ability of future generations to meet their own needs."

"A commitment to sustainability to satisfy and improve basic social, health, and economic needs/conditions, both present and future, and the responsible use and stewardship of the environment, all while maintaining or improving the well-being of the environment on which life depends."

Goals



Goals

Goals

Desired outcomes for general areas of concern to support and realize the overall Vision

Context



Multimodal Strategies, Projects & Programs Phase

Multimodal Strategies, Projects & Programs

What

In this phase, a range of multimodal strategies and projects or programs will be identified that could satisfy the project Guiding Principles, Vision and Goals.

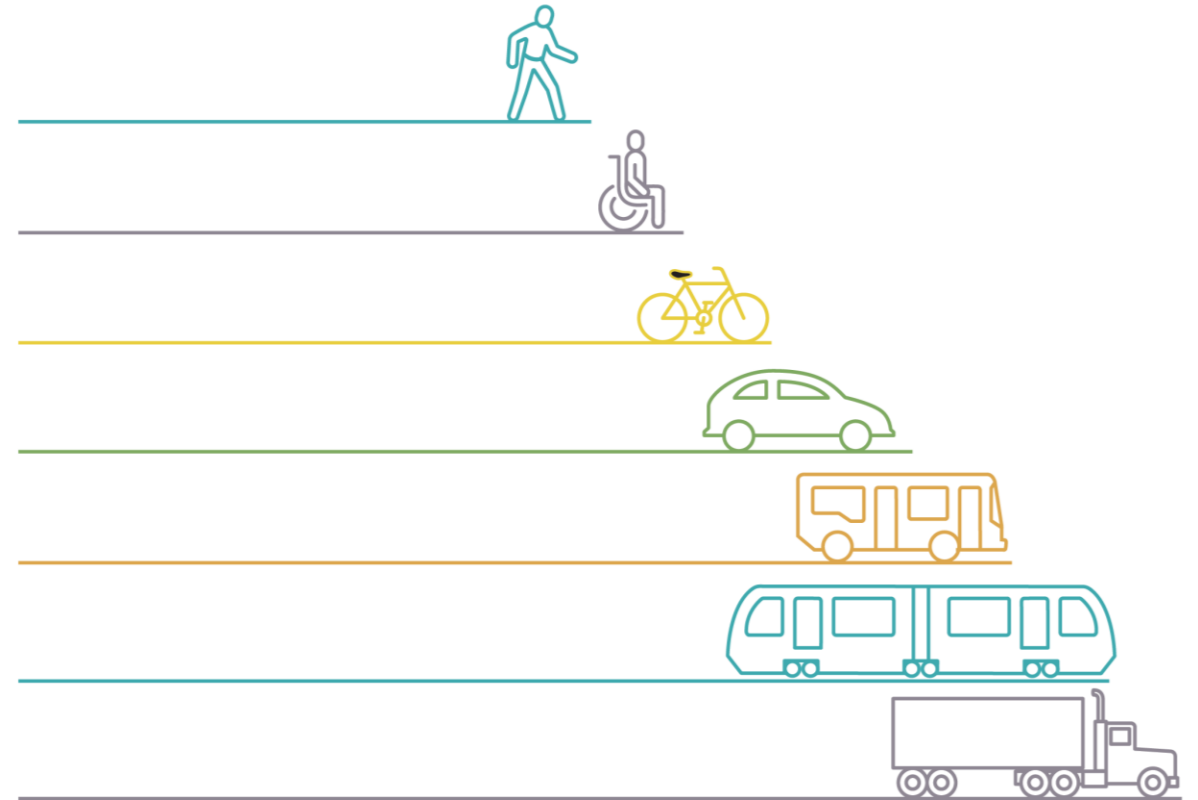
How

- > Research existing project lists
- > Calls to local municipalities
- > Gather ideas from Task Force, CLC, Working Groups, Community Based Organizations, General Public, Public Agencies, Freight Stakeholders, & Transit Agencies
- > Recommendations from Gateway Cities COG *Ad Hoc* Committee Report

Definition of "Multimodal"

A mixture of several modes of transportation, such as public transportation (i.e., bus, light rail, commuter rail, etc.), autos, trucks, freight rail, and non-motorized systems of transportation.

- > Includes walking, taking public transportation, driving, rolling (riding a bike, scooter, wheelchair, skates).



Bicycle and Pedestrian Improvements



Bike Lanes



New bicycle lane on existing roadways, indicated by striping, signage, and physical barriers.

Shared-Use Path



New bicycle paths just for bicyclists and pedestrians.

Pedestrian Safety and Amenities



Wider sidewalks, lighting, benches, shade trees, landscaping, and trash receptacles to improve the safety and comfort of the pedestrian experience.

Crossing Safety Enhancements



High Visibility Paint, Flashing Signals, Pedestrian Safety Island, Curb Extensions, or Bulb-outs to create short crossing distances and increased awareness of crossing locations.

Bike Share Programs



Low-cost, short-term bike rental from strategically placed docks or stations.

Bike/Ped Traffic Controls



Leading Pedestrian Interval, Bike crossing signals, No turn on red signals, signals and controls to reduce conflicts between pedestrians, bicyclists, and drivers.



Intersection Improvements



Turn lanes and other design features to reduce traffic queues at congested intersections.

Traffic Calming Features



Roundabouts, speed humps, and other design features or signage to slow traffic on local streets or near schools.

Traffic Management Features



Traffic signal coordination on major arterial corridors to maximize “green time” based on actual traffic conditions.

Added Roadway Lanes



Roadway reconfiguration to add travel lanes, designate parking lanes for peak hour travel lanes, or establish bus only lanes

Parking Options



Additional street parking, public/shared parking lots, or public/shared parking structures.

Visual Improvements



Landscaping, hardscaping, public art, and other design features to improve the appearance of the roadway.

Transit (Bus or Rail) Improvements



Transit Service Improvements



Additional transit routes or increase in frequency of existing services to reduce waiting times at bus stop and train stations.

Bus Priority Lanes



Bus priority lanes on local streets to improve bus travel times and reliability.

Improved Transit Amenities



Improved amenities such as lighting, security cameras, shelters at bus stops and at train stations.

Transit Fare Discounts



Increased transit fare discounts for low-income riders, students, and seniors.

Shuttle Services



On-demand transit shuttles (shuttle rides by appointment) in more communities.

Bus Boarding Improvements



Improvements for more efficient bus stopping and boarding such as all-door boarding, and/or design features such as bus bulb-outs or boarding islands

Freeway Improvements that Do Not Add Capacity



Interchange Improvements



Introduce improvements that make it safer and easier for vehicles to get on and off the freeway.

Zero-emission Truck Lane



Create a dedicated lane on the freeway just for zero emissions trucks.

Traffic Signals



Control features, such as traffic signals, to protect bicyclists and pedestrians at the freeway ramps.

Landscaping Features



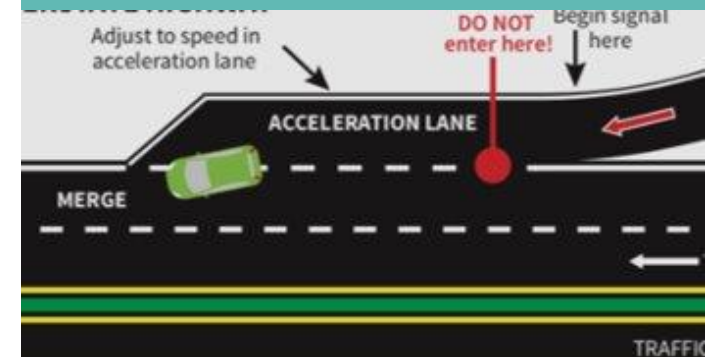
Incorporate landscaping, hardscaping, and other design features along the freeway to improve visual experience.

Sound Wall Improvements



Higher sound walls along the freeway to reduce noise.

Design Improvements



Spot improvements, such as acceleration/deceleration lanes near interchanges, to relieve congestion bottlenecks.



Health Benefits Program



Air filters for schools or vegetation buffers to reduce the harmful effects of air pollution.

EV Car-Share & Charging



Programs to provide short-term rental of electric vehicles and charging infrastructure for Zero-emission personal vehicles and trucks.

Local Hire and Workforce Development



Targeted and local hire programs to increase the share of public dollars that is devoted to creation of local jobs in the communities, and education/training of the local workforce.

Anti-displacement Strategies



Affordable housing policies, low-income rental assistance programs, tenants' rights education and legal representation to prevent unjust evictions.

Community Development Programs



Incentive programs to build affordable and mixed income housing, development of local parks, and other community resources

Zero Emissions Trucks



Program to reduce diesel trucks in favor of zero emissions trucks

Travel Reduction Strategies to Reduce Vehicle Trips



Transit Incentives



Provide transit passes to workers or students to encourage transit use.

Driving Disincentives



Parking restrictions, higher parking charges, tolls, and other policies to encourage alternative modes of travel to the automobile.

Carpool and Vanpool Programs



Programs to increase the number of people traveling per vehicle and reducing single-occupant vehicle trips.

On-Dock Freight Rail Facilities



Freight rail infrastructure in port facilities to reduce truck trips associated with goods movement.

Short-haul Freight Rail

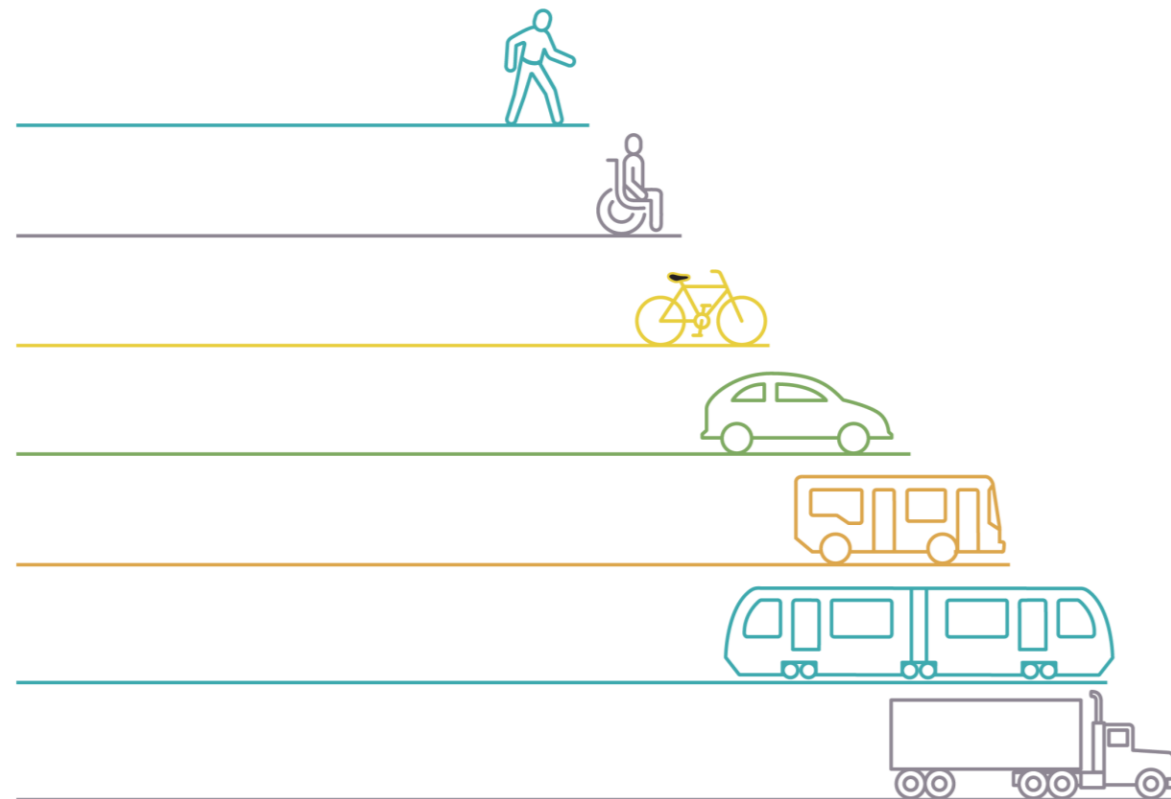


Inland port/implement short haul freight rail service to reduce local truck trips in the Corridor.

Zoom Poll: Mode of Travel

> What's your primary mode of travel in the corridor?

- Bus
- Rail
- Car
- Carpooling
- Walking
- Biking
- Paratransit
- Other



Project Hub & Interactive Mapping Tool and Survey

710 Task Force Information Hub

- > <http://www.metro.net/710-hub>
- > Extension of the current Metro.net website
- > User-friendly site for additional content
- > Graphics, meeting materials, calendar of meetings, maps, future surveys, and interactive tools



710 Task Force Information Hub

Welcome to the 710 Task Force information hub! Here you can review project information, explore an interactive map, view [project resources](#) and past meetings' videos/materials. Get involved in the planning process by attending upcoming [Task Force and Public Meetings](#).

Process and Goals



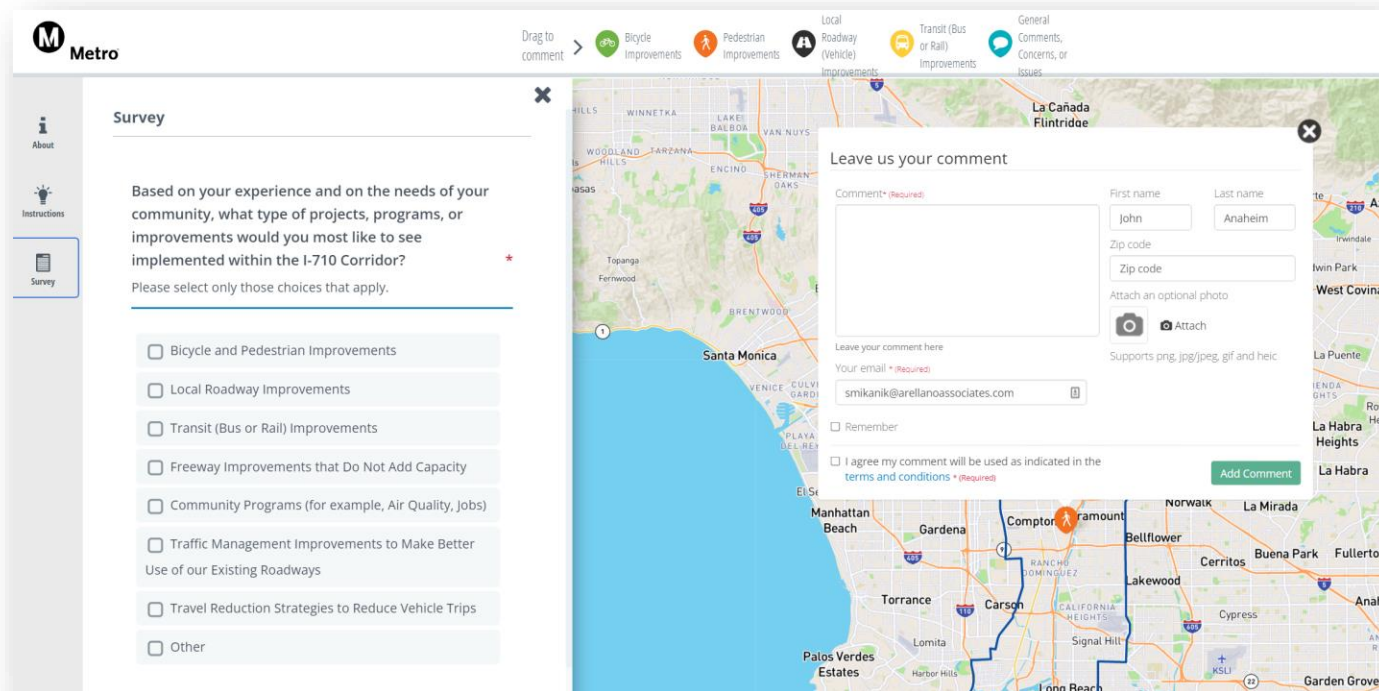
Interactive Mapping Tool and Survey

Live for Six Weeks

- > **Beta test:** July 18 available for input from CES and Coordinating Committee
- > **Full launch:** August 2
- > **Close survey:** September 12

Tool Objectives

- > **Engage the public** in the decision-making process
- > **Gather public input** on projects and programs
- > **Gather geo-coded data** (location-centric) comments on the project map



English



Español



Step-by-Step Tutorial

Interactive Mapping Tool and Survey

Survey

- > Visit our Survey & Mapping Tool at metro.net/710-hub
- > A welcome screen appears first, read through the information.
- > Navigate to the Survey tab located on the lefthand side of the page.
- > Use the first question to indicate the types of projects, programs, and improvements you'd like to see.
- > Click "Next" to answer questions that will ask you to elaborate on the selections you made in Question 1.
- > Once you have completed all Improvement-specific questions, the survey will ask you to tell us about yourself and leave your contact information to enter our gift card drawing. These sections of the survey are optional.
- > Finally, agree to the Terms & Conditions and select "Submit". You're done!

Interactive Map

- > Visit our Survey & Mapping Tool. metro.net/710-hub
- > Decide what area you would like to make a comment on. Zoom into that area on the map.
- > Determine which category best describes your comment (Bicycle Improvements; Pedestrian Improvements; Local Roadway Improvements; Transit Improvements; General Comments, Concerns, or Issues; or Other Mobility Improvements).
- > Click the corresponding marker, located at the top of the screen, and drag it to the relevant location. Please note that comments can only be added within the study area (blue line).
- > A box will pop up when you drop the marker onto the map. You can fill it out with your comment, contact info, and even a relevant photo.
- > Once you finish, agree to the Terms & Conditions and select "Add Comment". Your comment will now populate on the map!
- > Repeat this process as many times as you want to share all relevant feedback with our team.



Agenda #3

Interactive Breakout Sessions:
Receive Input on Project & Programs

Zoom Poll: Demographics

For the purposes of fulfilling our guiding principle of equity, it is useful to have key demographic information.

> What's your race/ethnicity?

- Asian/Pacific Islander
- Black/African American
- Latino/Hispanic
- Native American
- White/Caucasian
- Other
- Prefer not to respond

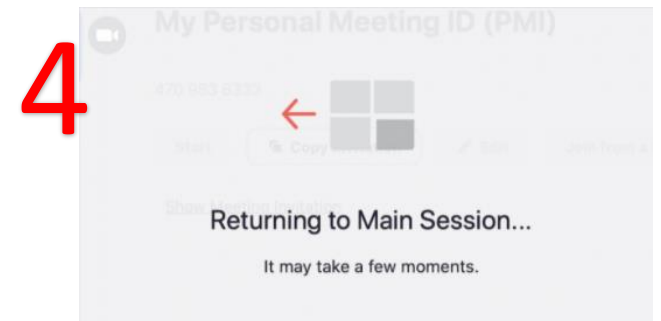
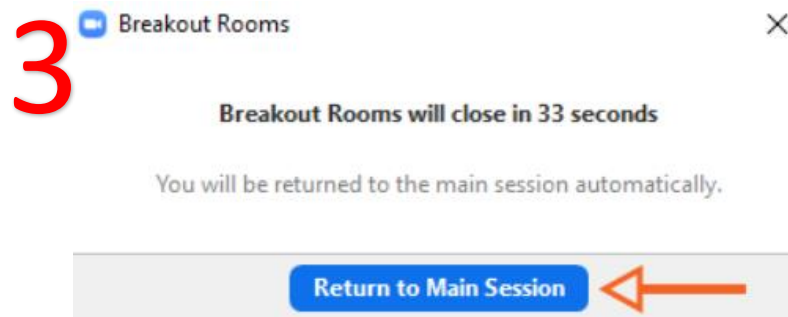
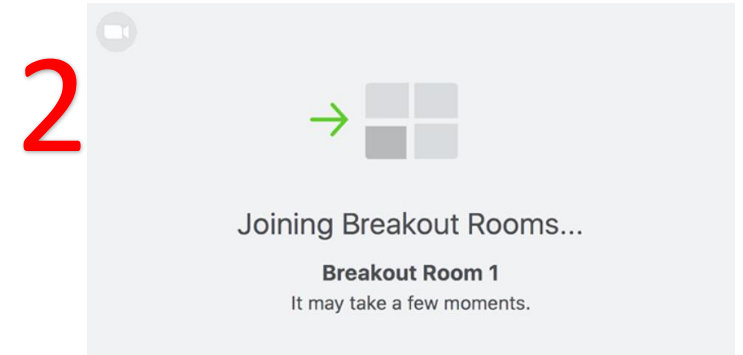
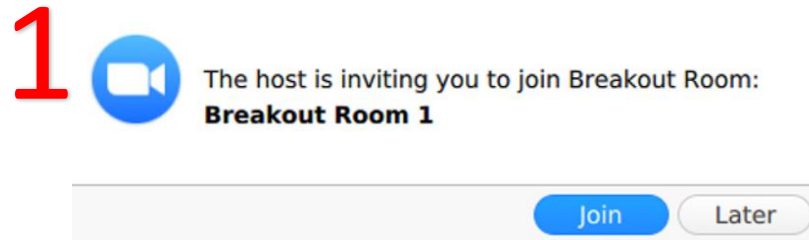
> What is your total household earnings annually?

- Less than \$5,000
- \$10,000 - \$14,999
- \$15,000 - \$19,999
- \$20,000 - \$24,999
- \$25,000 - \$34,999
- \$35,000 - \$49,999
- \$50,000 - \$74,999
- \$75,000 - \$99,999
- \$100,000-\$149,999
- \$150,000 or more

Breakout Groups

Instructions

- > **Format review:**
 - Facilitators, notetaker, logistics support
 - Each breakout room is organized by geographic area or language
- > **Duration:**
 - 60 minutes, then everyone will return to the main room
- > A representative from each breakout room will give a recap of the discussion



Breakout Groups

Meet Your Breakout Group Facilitators

Breakout Room # 1 (Main Room):

- *Southern Segment* - Michael Cano & Susan DeSantis

Breakout Room # 2:

- *Corridor-Wide (en Español)* - Ernesto Chaves & Roberto Cálix

Breakout Room # 3:

- *Northern Segment* - Laura Adleman & Melissa Holguin

Breakout Room # 4:

- *Southeast Los Angeles (SELA)* - KeAndra Cylear-Dodds & Erika Morales

Breakout Room # 5:

- *Mid-Corridor* – Susan Ambrosini & Jessica Medina

Breakout Room Report-Outs

Agenda Item #6: Public Engagement Efforts

Engagement Plan to Support Multi-Modal Strategies, Projects, & Programs

Key Activities

- > **Engage** schools and school districts, faith-based groups, elected offices, parent and business groups
- > **Extended engagement** by Task Force members and CLC members
- > **Toolkit** – digital collateral materials, including social media widgets and shareable links
- > **Notification flyer distribution**
 - Printed flyer drop-offs to public counters (e.g., libraries, schools, and city halls)
 - Digital flyer distribution through eblasts, websites, and social media
- > **CBO Partnering Strategy** – establish partnerships with CBOs to engage their stakeholders to identify transportation strategies, projects, and programs in their communities to develop an Investment Plan
- > **In-person/virtual community events and meetings** hosted by community partners
- > **Office hours** - virtual and in person
- > **Social and digital campaign**
- > **Announcements** at Task Force, Community Leadership Committee, Coordinating Committee, and working group meetings

Engagement Plan to Support Multi-Modal Strategies, Projects, & Programs

CBO Partnering Strategy

- > CBO Partnering Strategy – establish partnerships with CBOs to engage their stakeholders to identify transportation strategies, projects, and programs in their communities to develop an Investment Plan

Zoom Poll: I-710 South Corridor Attendance

> Was this your first time participating in an I-710 South Corridor meeting?

- Yes
- No

Zoom Poll: How did you hear about this event?

> How did you hear about this event?

- Flyer
- Email
- Metro website
- Social Media
- Family/Friend
- Other

Closing, Upcoming Meetings & Thank you

Stay connected to this project



Michael Cano, *Executive Officer (interim)*
Countywide Planning & Development
Metro
One Gateway Plaza, MS 99-13-1
Los Angeles, CA 90012



213.922.4710



710corridor@metro.net



metro.net/projects/i-710-corridor



@metrolosangeles



losangelesmetro

Thank you for joining us!