



I-710 SOUTH CORRIDOR PROJECT

Multimodal Strategies, Projects & Programs Public Workshop #1

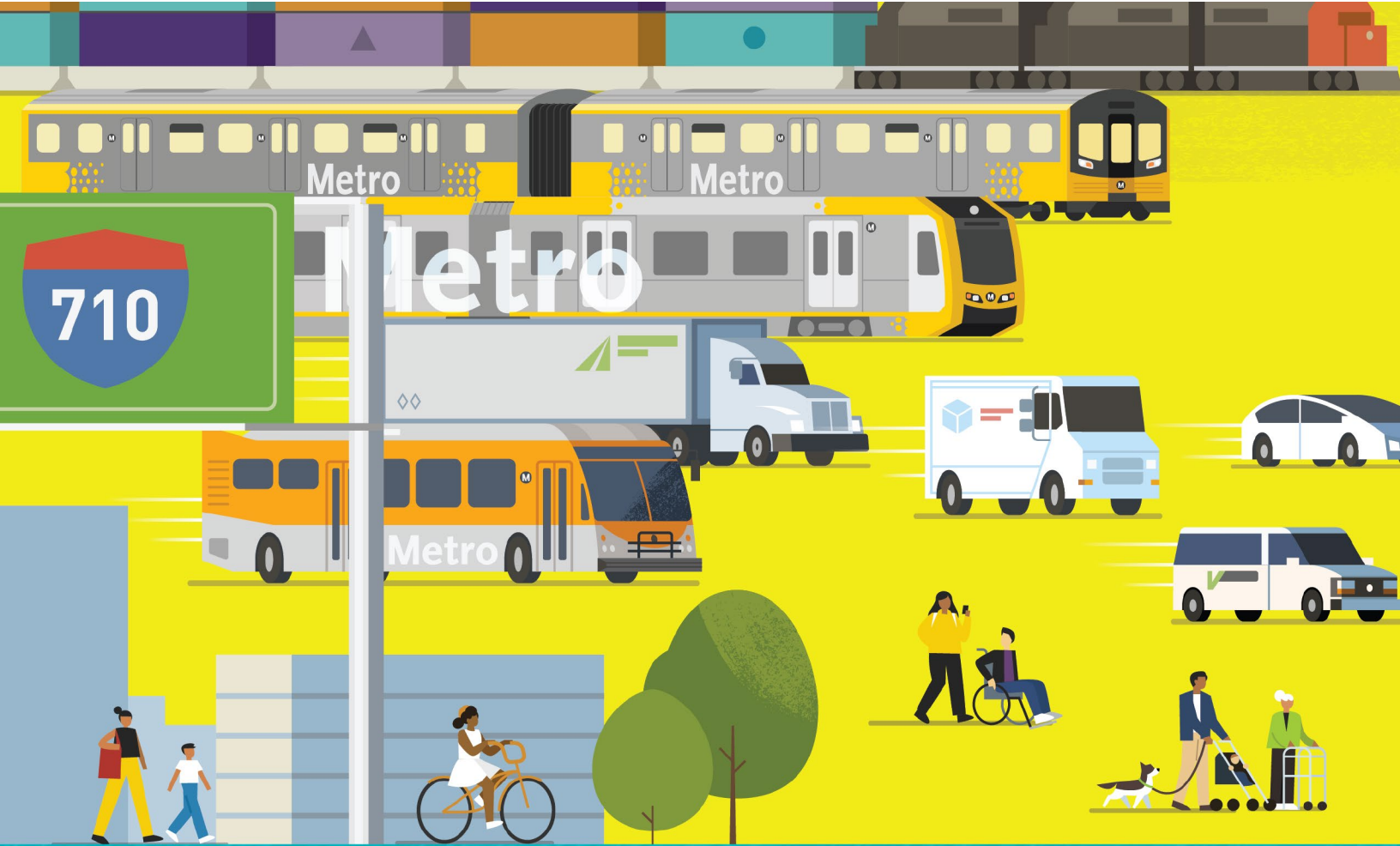
Table of Contents

Multimodal Strategies, Projects & Programs Public Workshop #1 Summary Report

Appendix A – Meeting Agenda

Appendix B – Meeting Presentation

Appendix C. Detailed Comments



I-710 SOUTH CORRIDOR PROJECT

Multimodal Strategies, Projects & Programs Public Workshop #1

August 30, 2022

5-7pm



Attendance

Task Force Members

Labor and Economic / Workforce Development

Louie Diaz, International Brotherhood of Teamsters, Local Union 848 (Teamsters)

Chris Wilson, Public Policy Manager, LA County Business Federation (BizFed)

Transportation Agencies

Marisol Barajas, Manager of Government Relations, Long Beach Transit (RideLBT)

Randy Johnson, Director of Government Affairs & Outreach, Access Services, Inc.

Community-Based Organization and Advocacy Groups

Laura Cortez, Community Organizer / Co-Director, East Yard Communities for Environmental Justice (EYCEJ)

Jennifer Ganata, Senior Staff Attorney, Communities for Better Environments (CBE)

Environmental Organizations

Christopher Chavez, Deputy Policy Director, Coalition for Clean Air

Fernando Gaytan, Senior Attorney, Earthjustice

Academic / Research / Policy / Foundations

Niki Okuk, Deputy Director, CALSTART

Local Jurisdictions

Viviana Gomez, Transportation Deputy, County of Los Angeles, Supervisorial District 4

Marisela Santana, Councilmember, City of Lynwood

Ex-Officio

Nancy Pfeffer, Executive Director/VP, Finance and Budget, Gateway Cities Council of Governments (GCCOG)

CLC

Emmanuel Godinez, Boyle Heights

Fa'alagilagi Meni-Siliga, Carson

Tiesha Davis, San Pedro

ZETWG

James Shankel, Senior Environmental Planner, Caltrans District 7

Lynda Bybee, Associate/Business Development Manager, LSA Associates

Project Team

Metro

KeAndra Cylear Dodds, Executive Officer of Equity and Race, Metro

Michael Cano, Executive Officer of Countywide Planning & Development, Metro

Jessica Medina, Manager of Equity and Race, Metro

Ernesto Chaves, Director of Highway Programs, Metro

Lilian De Loza-Gutierrez, Director of Community Relations, Metro

AECOM

Laura Adleman, Senior Outreach and Engagement Specialist, AECOM

Julie Rush, Planning Senior Manager, AECOM

Mariana Estrada, Project Intern, AECOM

Cal Strategic Management

Robert Calix, Cal Strategic Management

Caltrans District 7

Jeff Newman, Transportation Planner, Caltrans District 7

Alice Tyree, Caltrans District 7

Paul Marquez, Deputy District Director of Planning, Caltrans District 7

GF Bunting + Co.

Maya Pogoda, Senior Executive, GF Bunting + Co.

Here LA

Amber Hawkes, Co-Director, Here LA

Introduction

The Los Angeles County Metropolitan Transportation Authority (Metro) and the California Department of Transportation (Caltrans) District 7 initiated the I-710 South Corridor Task Force (710 Task Force) to develop a community-supported, regionally significant, multimodal approach to addressing major mobility, safety, air quality, and equity needs for moving people and goods through the I-710 South Corridor between the Ports of Los Angeles and Long Beach and State Route 60. The 710 Task Force will review and assess the purpose and need for investment in the I-710 corridor, develop multi-modal improvement strategies, name programs and projects to advance these strategies, create an investment and implementation plan, and supply recommendations to the Metro Board in 2023.

The 710 Multimodal Strategies, Projects & Programs Public Workshop #1 was held virtually on Wednesday, August 30, 2022. The intent of this meeting was:

- (1) Present a Project Update
- (2) Introduce the Multimodal Strategies, Projects & Programs (MSPP) phase
- (3) Demonstrate the Interactive Mapping Tool and Survey
- (4) Receive Multimodal Strategies, Projects & Programs (MSPP) input

Spanish interpretation was provided simultaneously for this meeting. Prior to the meeting, participants received the agenda (**Appendix A**), presentation (**Appendix B**), and meeting materials (**Appendix C**).

Welcome, Introductions, Agenda Review, and Meeting Objectives

- > Erika Morales, Meeting Facilitator, opened the meeting and shared an overview of the meeting objectives as well as the meeting agenda.
- > Ms. Morales facilitated two polls to understand where stakeholders reside and what meetings they have participated in previously. The results were:

Poll #1: "What city do you live, work, or spend most of your time in?"

- Southern Segment- Lakewood, Signal Hill, Long Beach, San Pedro, Wilmington, Ports of LA, and Long Beach 8 (22%)
- Northern Segment- East LA, Commerce, Montebello, Vernon, Boyle Heights 8 (22%)
- SELA- Maywood, Huntington Park, Bell, Cudahy, Bell Gardens, South Gate, Downey, Lynwood 13 (34%)
- Mid-Corridor- Compton, Paramount, Carson, Bellflower 8 (22%)

Poll #2: "What types of 710 Task Force Meetings and activities have you participated in before?"

- Task Force Meetings 19 (51%)
- Community Leadership Committee Meetings 11 (30%)
- Listening Sessions 11 (30%)
- Online Surveys 14 (38%)
- Office Hours 1 (3%)

1. Agenda Item #1: Project Update

- > Michael Cano, Executive Officer of Countywide Planning, shared a project update including the conclusion of voting on the last goal of "Economy" to complete the Vision and Goals phase at the previous Task Force Meeting.
- > Mr. Cano provided a recap of the approved Vision Statement, Guiding Principles, and on the final effort of approving Goals.

Introduction of Next Phase: Multimodal Strategies, Projects & Programs (MSPP)

- > Ernesto Chaves, Director of Highway Programs, shared an overview of the different examples of multimodal projects and programs that are being considered by the Task Force.
- > Ms. Morales invited meeting attendees to participate in a Zoom poll to understand stakeholders' primary mode of travel. The results were:

Poll #3: “What's your primary mode of travel in the corridor?”

- 4 (9%) Bus
- 0 (0%) Rail
- 39 (85%) Car
- 0 (0%) Carpooling
- 2 (4%) Walking
- 0 (0%) Biking
- 1 (2%) Paratransit
- 0 (0%) Other

Project Hub & Interactive Mapping Tool and Survey

- > Lilian De Loza-Gutierrez shared an overview of the 710 Task Force [Information Hub](#) and the [interactive mapping tool](#).
- > Nancy Verduzco, Tech Coordinator, Arellano Associates, gave a live demonstration of the project hub and the interactive mapping tool .
- > Ms. Morales invited the meeting attendees to participate in two demographic polls to fulfill the Task Force’s guiding principle of equity. The results were:

Poll #4: What is your race/ethnicity?

- 2 (6%) Asian/Pacific Islander
- 6 (18%) Black/African American
- 18 (33%) Latino/Hispanic
- 1 (3%) Native American
- 4 (12%) White/Caucasian
- 1 (3%) Other

Poll #5: What is your total household earnings annually?

- 0 Less than \$5,000 (0%)
- 0 \$10,000-\$14,999 (0%)
- 2 \$15,000-\$19,999 (6%)
- 0 \$20,000-\$24,999 (0%)
- 0 \$25,000-\$34,999 (0%)
- 2 \$35,000-\$49,999 (6%)
- 5 \$50,000-\$74,999 (15%)
- 4 \$75,000-\$99,999 (12%)
- 8 \$100,000-\$149,999 (24%)
- and 12 \$150,000 or more (36%).

1. Agenda Item #2: Interactive Breakout Sessions-Input on Interactive Mapping Tool and Survey

- > Ms. Morales introduced this next agenda item by announcing that attendants will be put into interactive breakout rooms for the next part of the meeting.
- > Each breakout room was organized by a specific geographic area across the Corridor. There was one breakout room dedicated to monolingual Spanish speakers.
- > The five breakout rooms each had 2 Project Team members to help facilitate and guide the discussion with the stakeholders and the rooms were broken up as follows:
 - Breakout Room #1 (Main Room): Southern Segment
Facilitators: Michael Cano (Metro) & Susan DeSantis (Arellano Associates)
 - Breakout Room #2: Corridor-Wide (Spanish speakers)
Facilitators: Ernesto Chaves (Metro) & Robert Calix (Cal Strategic Management)
 - Breakout Room #3: Northern Segment
Facilitators: Laura Adleman (AECOM) & Melissa Holguin (Arellano Associates)
 - Breakout Room #4: Southeast Los Angeles (SELA)
Facilitators: KeAndra Cylear Dodds (Metro) & Erika Morales (Morales+Partners)
 - Breakout Room #5: Mid-Corridor
Facilitators: Susan Ambrosini (AECOM) & Jessica Medina (Metro)

Return from Breakout Sessions – Report Outs-

- > An overview of each breakout session's reports is listed below:

Breakout Room #1: Southern Segment

- Mr. Cano presented this breakout room report.
- The goals that were most vital to the community were: Air Quality, Safety and Mobility.
- Mr. Cano expressed the group members felt the 710 had been dividing the community and discussed how this project can help reconnect the communities along the southern end of the corridor.
- Stakeholders expressed the need to improve air quality to ensure a better quality of life for members of the community.

Breakout Room #2: Corridor Wide (Spanish Speakers)

- Maria Reyes, Long Beach CLC Member presented this breakout room report.
- The goals that were most vital to these breakout room participants were: Safety, Mobility, and Community
- Ms. Reyes explained how there is little protection on the streets, near freeway bridges, and around the LA River.
- A need for more barriers and safer streets is something the community in Long Beach needs.

Breakout Room #3: Northern Segment

- Laura Adleman, Senior Outreach and Engagement Specialist, AECOM presented this breakout room report.
- The goals that were most vital to Northern Segment meeting participants were: Air Quality and Community
- Ms. Adleman explained the group's desire for this project to address the emissions and air quality issues that East LA suffers from. The group mentioned using alternative forms of transportation as opposed to cars is a way to help make the community cleaner.

Breakout Room #4: Southeast Los Angeles (SELA)

- KeAndra Cylear Dodds, Executive Office of Equity and Race, Metro presented this breakout room report.
- The goals that were most vital to the SELA meeting participants were: Air Quality, Community, and Environment
- Ms. Cylear Dodds reported that the group recommended adding air filtration systems for schools in this area.
- Providing alternatives to driving by increasing the number of bike paths and access to public transit would help resolve this issue.

Breakout Room #5: Mid-Corridor

- Moses Huerta, City of Paramount Community Member presented this breakout room report.
- The goals that were most vital to the Mid-Corridor meeting participants were: Mobility, Safety, and Community
- Mr. Huerta reported that there is a need to create more efficient access to public transit for disabled members of the community
- Increasing law enforcement presence on transit systems will decrease the elevated levels of crime in the communities in this corridor experience.

- > Detailed comments were documented in the Social Pinpoint Map Tool and can be found in **Appendix C.**

3. Agenda Item #3: Public Engagement Efforts

- > Ms. Cylear Dodds to provide a brief presentation of the public engagement efforts that the Task Force is conducting to support this phase of the project.
- > The following efforts have been employed to increase public engagement:
 - Engagement with schools, faith-based groups, and business groups
 - Formal partnership with community-based organizations through Metro's CBO Partnering Strategy
 - Social and Digital Media campaigns
 - Project flyer distribution within communities in the corridor

4. Closing Remarks and Upcoming Meetings

- > Ms. Morales reviewed the upcoming Task Force meeting information and other key dates.
- > Ms. Morales encouraged Task Force members and members of the public to contact Michael Cano should they have any questions or concerns.
- > The meeting adjourned at 7:00 pm.

Meeting Format Logistics

- Meeting Format: Zoom Meeting
- Participants: Task Force, CLC, and Public
- Interactive Tools: Zoom Polls



710 Task Force

I-710 South Corridor Multimodal Strategies, Projects & Programs Public Workshop Meeting #1
Agenda/Agenda de la Estrategias, Proyectos y Programas Multimodales Taller público #1
Tuesday, August 30, 2022/ martes, 30 de agosto de 2022
5-7pm

Interpretation in Spanish, Khmer, and Tagalog will be provided.
Se proporcionará interpretación en español, jemer y tagalo.

Meeting Link /enlace de reunión: <https://tinyurl.com/710-PW1>

Meeting ID / ID de reunión: 882 1156 1216

Passcode / Contraseña: 5851

Call-in: 213.338.8477

- 5:00 pm** **Welcome and Agenda Review** (5 minutes)
Bienvenida y revisión de la agenda
- 5:05 pm** **Agenda Item #1: Project Update** (25 minutes)
Punto 1 del orden del día: Actualización del proyecto
- 5:30 pm** **Agenda Item #2: Interactive Breakout Sessions – Input on Interactive Mapping Tool and Survey** (60 minutes)
Punto 2 del orden del día: Sesiones interactivas de trabajo – Aportaciones sobre la herramienta de cartografía interactiva y la encuesta
- 6:30 pm** **Return from Breakout Sessions – Report Outs** (20 minutes)
Regreso de las sesiones de trabajo – Reportar salidas
- 6:50 pm** **Agenda Item #3: Public Engagement Efforts: CBO Partnering Strategy** (5 minutes)
Punto #3 de la agenda: Esfuerzos de participación pública: Estrategia de asociación de la CBO
- 6:55 pm** **Closing, Upcoming Meetings, and Thank you** (5 minutes)
Próximas reuniones del Grupo de Trabajo del Corredor 710

*Please refer to the full meeting presentation for detailed agenda

**Consulte la presentación completa de la reunión para obtener una agenda detallada*



Metro

We're developing a new vision for the 710 corridor.

I-710 TASK FORCE



Welcome!

We will begin in a few moments.

Multimodal Strategies, Projects & Programs

Public Workshop

August-September 2022



Metro

Facilitator



Erika C.B. Morales

Partner, Morales + Morales Partners

Project Team



KeAndra Cylear Dodds

LA Metro, Equity and Race



Jessica Medina

LA Metro, Equity and Race



Michael Cano

LA Metro, Countywide Planning



Ernesto Chaves

LA Metro, Highway Programs



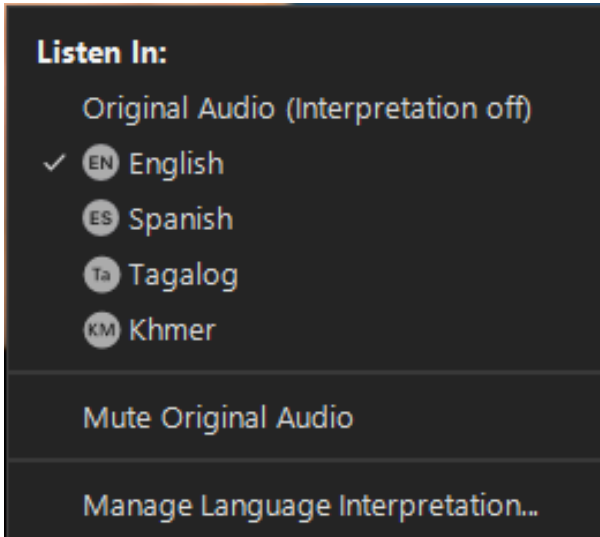
Lilian De Loza-Gutierrez

LA Metro, Community Relations



Robert Cálix

Cal Strategic Management, LLC



> This meeting is transmitted in English, Spanish, Khmer and Tagalog.

> Everyone must choose the preferred language they would like to hear the meeting in

> Click the **Interpretation** icon in your meeting controls to enter an *English, Spanish, Tagalog, Khmer* room

> To hear the interpreted language only, click **Mute Original Audio** (Optional)

> *Esta reunión se transmite en inglés, español, jemer y tagalo.*

> *Todos deben elegir el idioma preferido en el que les gustaría escuchar la reunión.*

> *Haga clic en el icono de Interpretación en los controles de su reunión para ingresar a una sala en de interpretacion en el inglés, el español, el jemer o tagalo.*

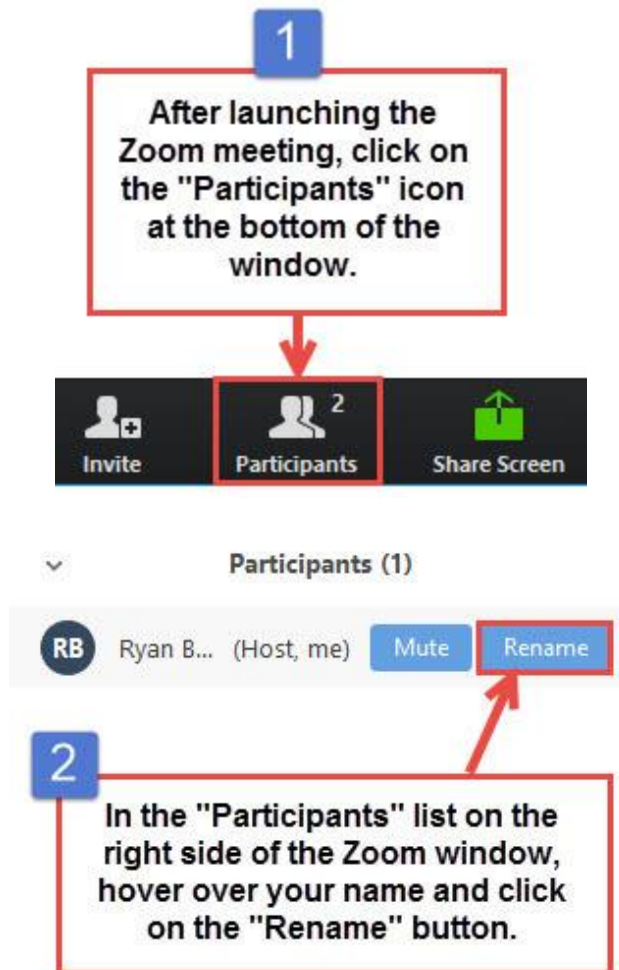
> *Para escuchar solo el idioma interpretado, haga clic en “**Mute Original Audio**” o “**Silenciar audio original**” (Opcional)*

Attendee Identification

Task Force Members: Name – Task Force

CLC Members: Name – CLC, Jurisdiction

Public: Name – Home City

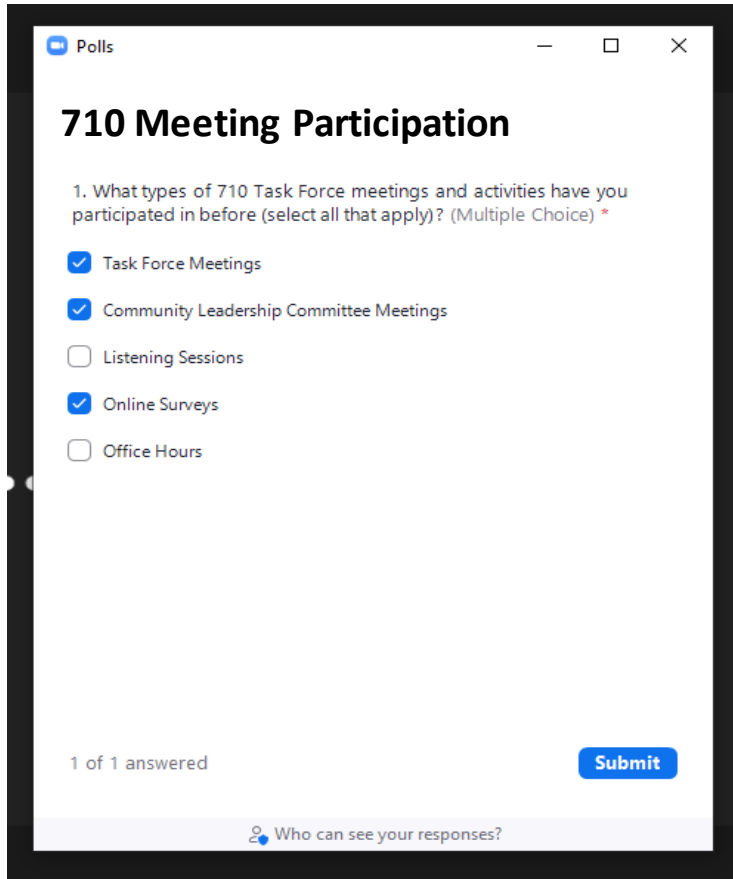


Zoom Protocols / *Protocolos de Zoom*

- > Click **Raise Hand** in your meeting controls or
- > **Press*9** on the phone line.
- > To lower your hand, click **Raise Hand** in your meeting controls.
- > Comments & questions can also be provided in writing by using the **Q&A** function.
- > The **Q&A** button is located on the control panel at the bottom of your screen.
- > Tech Support - Phone: 323.609.3345
Monitoring, translation support

- > *Haga clic en “**Raise Hand**” o “**Levantar la mano**” en los controles de la reunión o*
- > ***Presiona *9** en la línea telefónica.*
- > *Para bajar la mano, haga clic en “**Raise Hand**” o “**Levantar la mano**” en los controles de la reunión.*
- > *Los comentarios y las preguntas también se pueden proporcionar por escrito mediante la función de **Q&A**.*
- > *El botón **Q&A** se encuentra en el panel de control en la parte inferior de la pantalla.*
- > *Asistencia Tecnológica por teléfono al 323.609.3345*

Zoom Polls / Encuestas de Zoom



The screenshot shows a Zoom poll interface. At the top, it says 'Polls' in the window title bar. The poll title is '710 Meeting Participation'. The question is '1. What types of 710 Task Force meetings and activities have you participated in before (select all that apply)? (Multiple Choice) *'. There are four options: 'Task Force Meetings' (checked), 'Community Leadership Committee Meetings' (checked), 'Listening Sessions' (unchecked), and 'Online Surveys' (checked). 'Office Hours' is also unchecked. At the bottom left, it says '1 of 1 answered'. At the bottom right, there is a blue 'Submit' button. At the very bottom, there is a link icon and the text 'Who can see your responses?'.

- > A poll will appear on your Zoom screen
- > Click on whichever answer options you would like to submit. Some questions will have a single answer, some will give you the option to select multiple answers.
- > Click "Submit"
- > If you have any questions, please contact Tech Support - Phone: 323.609.3345

- > *Aparecerá una encuesta en su pantalla Zoom*
- > *Haga clic en la opción de respuesta que desee enviar. Algunas preguntas tendrán una sola respuesta, otras le darán la opción de seleccionar múltiples respuestas.*
- > *Haga clic en "Enviar"*
- > *Si tiene alguna pregunta, comuníquese con Soporte Técnico - Teléfono: 323.609.3345*

Meeting Objectives

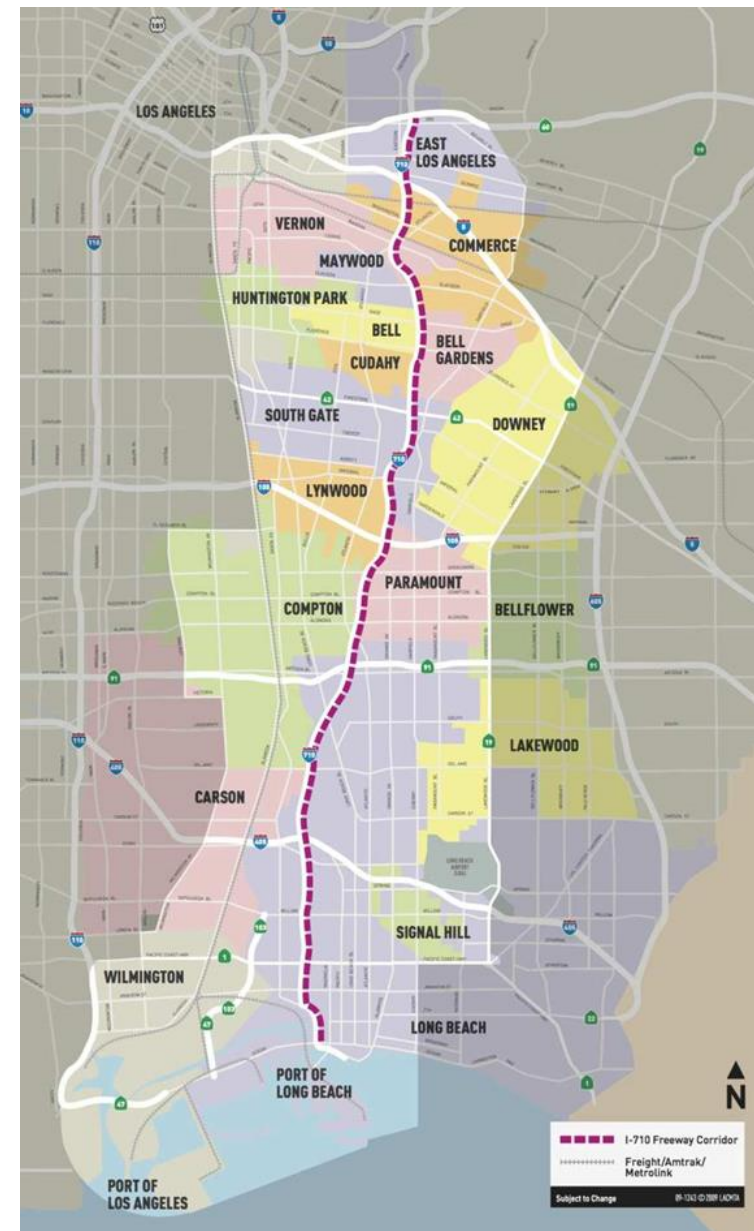
- > Present Project Update
- > Introduce the Multimodal Strategies, Projects & Programs (MSPP) phase
- > Demonstrate Interactive Mapping Tool and Survey
- > Receive your feedback

Agenda

- 5:00pm Welcome and Agenda Review**
- 5:05pm Agenda Item #1: Project Update**
- 5:30pm Agenda Item #2: Interactive Breakout Sessions – Input on Interactive Mapping Tool and Survey**
- 6:30pm Return from Breakout Sessions – Report Outs**
- 6:50pm Agenda Item #3: Public Engagement Efforts: CBO Partnering Strategy**
- 6:55pm Closing, Upcoming Meetings and Thank you**

Ice Breaker – Zoom Poll

- > **What city do you live, work, or spend most of your time in?**
 - **Southern segment** – Lakewood, Signal Hill, Long Beach, San Pedro, Wilmington, Ports of LA and Long Beach
 - **Northern segment** – East LA, Commerce, Montebello, Vernon, Boyle Heights
 - **SELA** – Maywood, Huntington Park, Bell, Cudahy, Bell Gardens, South Gate, Downey, Lynwood
 - **Mid-Corridor** – Compton, Paramount, Carson, Bellflower



Ice Breaker – Zoom Poll

> **What types of 710 Task Force meetings and activities have you participated in before**

(select all that apply)?

- Task Force Meetings
- Community Leadership Committee Meetings
- Listening Sessions
- Online Surveys
- Office Hours
- Other
- None of the above

Agenda Item #1: Project Update

What We're Working Toward



Task Force Members and Working Groups

| | AGENCY | LEAD |
|----|---|--|
| 1 | Access Services, Inc. | Randy Johnson |
| 2 | Alameda Corridor Transportation Authority (ACTA) | Michael Leue |
| 3 | Breathe Southern California | Tigran Agdaian |
| 4 | Burlington Northern Santa Fe (BNSF) Railway | Lena Kent |
| 5 | California Air Resources Board (CARB) | Robert Krieger |
| 6 | CALSTART | Alycia Gilde |
| 7 | City of Bell Gateway Cities Council of Governments (GCCOG) Ad Hoc Committee | Councilmember Ali Saleh |
| 8 | City of Commerce GCCOG Ad Hoc Committee | Mayor Oralia Rebollo |
| 9 | City of Cudahy GCCOG Ad Hoc Committee | Mayor Elizabeth Alcantar |
| 10 | City of Long Beach | Councilmember Suely Saro |
| 11 | City of Los Angeles | Dan Rodman |
| 12 | Coalition for Clean Air | Chris Chavez |
| 13 | Communities for a Better Environment (CBE) | Jennifer Ganata & Dilia Ortega (<i>co-leads</i>) |
| 14 | County of Los Angeles, Supervisorial District 1 | Martin Reyes/Ben Feldman |
| 15 | County of Los Angeles, Supervisorial District 2 | Lilly O'Brien-Kovari |
| 16 | County of Los Angeles, Supervisorial District 4 | Luke Klipp |
| 17 | Earthjustice | Fernando Gaytan |
| 18 | East Yard Communities for Environmental Justice (EYCEJ) | Laura Cortez |
| 19 | Harbor Trucking Association (HTA) | Matt Schrap |
| 20 | International Brotherhood of Teamsters, Local Union 848 | Eric Tate |
| 21 | LA County Business Federation (BizFed) | Chris Wilson |
| 22 | LA County Department of Public Works | Steve Burger |
| 23 | LA County Economic Development Corporation (LAEDC) | Stephen Cheung |
| 24 | LA Unified School District | Fidencio Gallardo |
| 25 | Legal Aid Foundation of LA-Long Beach (LAFLA-LB) | Ghirlandi Guidetti |
| 26 | Long Beach Alliance for Children with Asthma (LBACA) | Sylvia Betancourt |
| 27 | Long Beach Transit (LBT) | Marisol Barajas |
| 28 | METRANS Transportation Consortium | Dr. Genevieve Giuliano |
| 29 | Metrolink (Southern California Regional Rail Authority) | Roderick Diaz |
| 30 | National Resources Defense Council (NRDC) | Natalia Ospina |
| 31 | Pacific Merchant Shipping Association (PMSA) | Michele Grubbs |
| 32 | Port of Long Beach (POLB) | Commissioner Sharon Weissman |
| 33 | Port of Los Angeles (POLA) | Kerry Cartwright |
| 34 | South Coast Air Quality Management District (AQMD) | |
| 35 | Southeast Los Angeles (SELA) Collaborative | Dr. Wilma Franco |
| 36 | Southern California Association of Governments (SCAG) | Scott Strelecki |
| 37 | Union Pacific (UP) Railroad | Lupe Valdez |
| 38 | USC Equity Research Institute (ERI) | Edward Muna |

- **Community Leadership Committee**
- **Equity Working Group**
- **Zero-Emission Truck Working Group**
- **Community Engagement Strategy Working Group**
- **Coordinating Committee**

Vision Statement

Vision

A concise statement that captures the collective aspirations, desires, and outcomes of the project

Vision:

Approved by the Task Force on July 11, 2022

An equitable, shared I-710 South Corridor transportation system that provides safe, quality multimodal options for moving people and goods that will foster clean air (zero emissions), healthy and sustainable communities, and economic empowerment for all residents, communities, and users in the corridor.

Guiding Principles

Guiding Principle

A value that guides all processes and outcomes through a cohesive and intentional framework

Equity

“A commitment to: (1) strive to rectify past harms; (2) provide fair and just access to opportunities; and 3) eliminate disparities in project processes, outcomes, and community results.”

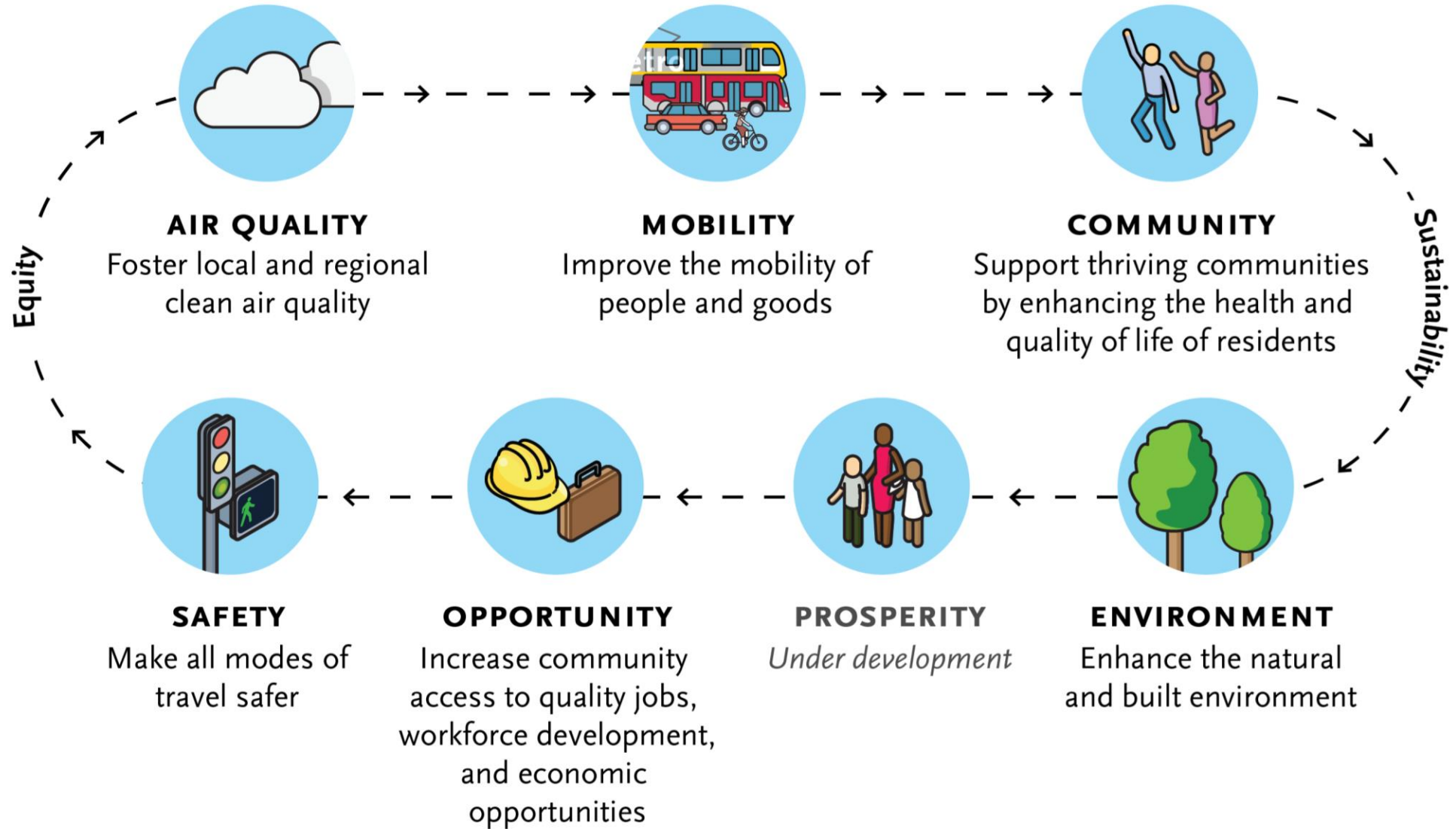
“The plan seeks to elevate and engrain the principle of Equity across all goals, objectives, strategies, and actions through a framework of Procedural, Distributive, Structural, and Restorative Equity, and by prioritizing an accessible and representative participation process for communities most impacted by the I-710.”

Sustainability

"Development that meets the needs of the present without compromising the ability of future generations to meet their own needs."

"A commitment to sustainability to satisfy and improve basic social, health, and economic needs/conditions, both present and future, and the responsible use and stewardship of the environment, all while maintaining or improving the well-being of the environment on which life depends."

Goals



Goals

Goals

Desired outcomes for general areas of concern to support and realize the overall Vision

Context



Multimodal Strategies, Projects & Programs Phase

Multimodal Strategies, Projects & Programs

What

In this phase, a range of multimodal strategies and projects or programs will be identified that could satisfy the project Guiding Principles, Vision and Goals.

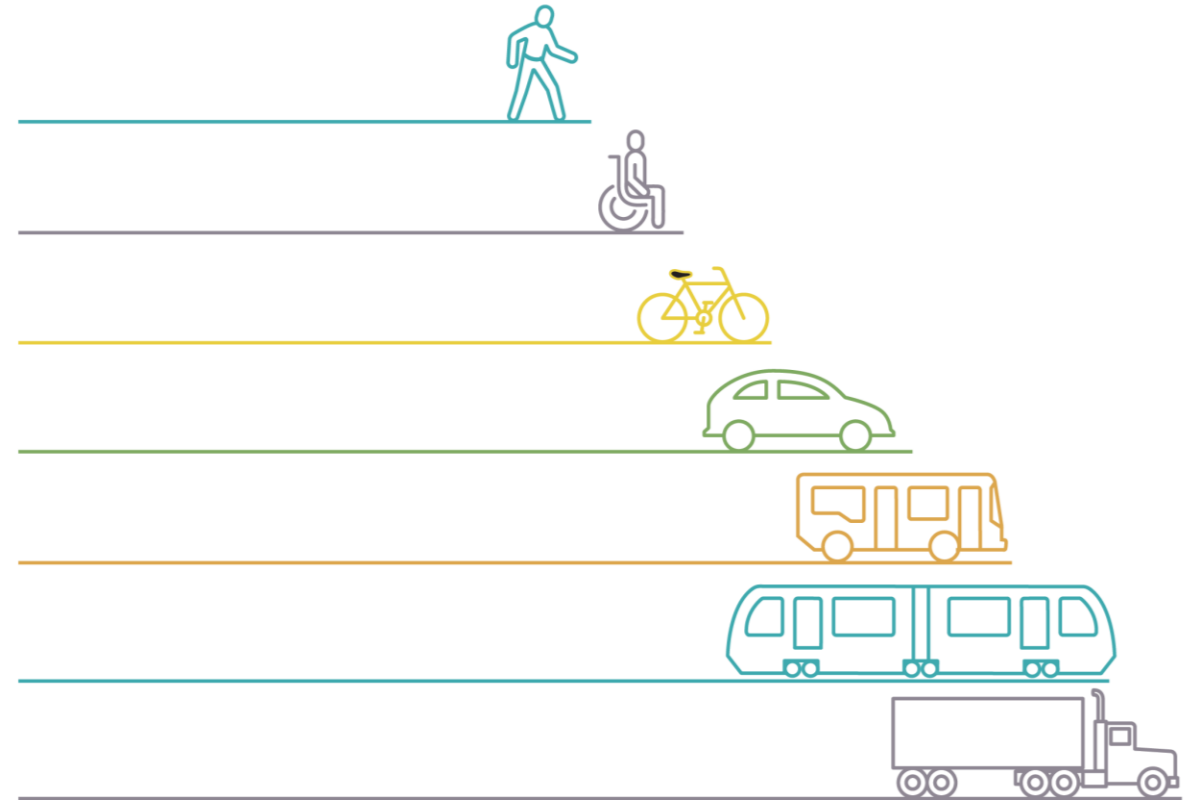
How

- > Research existing project lists
- > Calls to local municipalities
- > Gather ideas from Task Force, CLC, Working Groups, Community Based Organizations, General Public, Public Agencies, Freight Stakeholders, & Transit Agencies
- > Recommendations from Gateway Cities COG *Ad Hoc* Committee Report

Definition of "Multimodal"

A mixture of several modes of transportation, such as public transportation (i.e., bus, light rail, commuter rail, etc.), autos, trucks, freight rail, and non-motorized systems of transportation.

- > Includes walking, taking public transportation, driving, rolling (riding a bike, scooter, wheelchair, skates).



Bicycle and Pedestrian Improvements



Bike Lanes



New bicycle lane on existing roadways, indicated by striping, signage, and physical barriers.

Shared-Use Path



New bicycle paths just for bicyclists and pedestrians.

Pedestrian Safety and Amenities



Wider sidewalks, lighting, benches, shade trees, landscaping, and trash receptacles to improve the safety and comfort of the pedestrian experience.

Crossing Safety Enhancements



High Visibility Paint, Flashing Signals, Pedestrian Safety Island, Curb Extensions, or Bulb-outs to create short crossing distances and increased awareness of crossing locations.

Bike Share Programs



Low-cost, short-term bike rental from strategically placed docks or stations.

Bike/Ped Traffic Controls



Leading Pedestrian Interval, Bike crossing signals, No turn on red signals, signals and controls to reduce conflicts between pedestrians, bicyclists, and drivers.



Intersection Improvements



Turn lanes and other design features to reduce traffic queues at congested intersections.

Traffic Calming Features



Roundabouts, speed humps, and other design features or signage to slow traffic on local streets or near schools.

Traffic Management Features



Traffic signal coordination on major arterial corridors to maximize “green time” based on actual traffic conditions.

Added Roadway Lanes



Roadway reconfiguration to add travel lanes, designate parking lanes for peak hour travel lanes, or establish bus only lanes

Parking Options



Additional street parking, public/shared parking lots, or public/shared parking structures.

Visual Improvements



Landscaping, hardscaping, public art, and other design features to improve the appearance of the roadway.

Transit (Bus or Rail) Improvements



Transit Service Improvements



Additional transit routes or increase in frequency of existing services to reduce waiting times at bus stop and train stations.

Bus Priority Lanes



Bus priority lanes on local streets to improve bus travel times and reliability.

Improved Transit Amenities



Improved amenities such as lighting, security cameras, shelters at bus stops and at train stations.

Transit Fare Discounts



Increased transit fare discounts for low-income riders, students, and seniors.

Shuttle Services



On-demand transit shuttles (shuttle rides by appointment) in more communities.

Bus Boarding Improvements



Improvements for more efficient bus stopping and boarding such as all-door boarding, and/or design features such as bus bulb-outs or boarding islands

Freeway Improvements that Do Not Add Capacity



Interchange Improvements



Introduce improvements that make it safer and easier for vehicles to get on and off the freeway.

Zero-emission Truck Lane



Create a dedicated lane on the freeway just for zero emissions trucks.

Traffic Signals



Control features, such as traffic signals, to protect bicyclists and pedestrians at the freeway ramps.

Landscaping Features



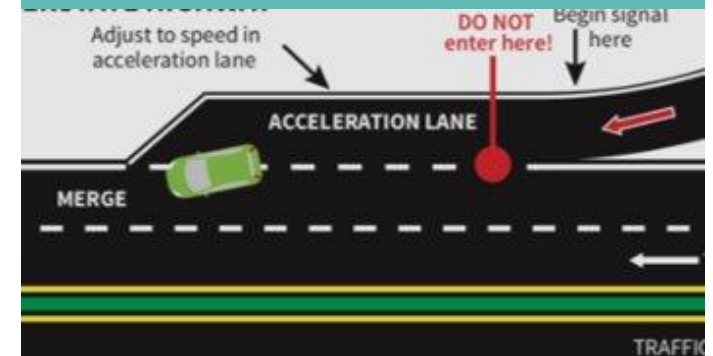
Incorporate landscaping, hardscaping, and other design features along the freeway to improve visual experience.

Sound Wall Improvements



Higher sound walls along the freeway to reduce noise.

Design Improvements



Spot improvements, such as acceleration/deceleration lanes near interchanges, to relieve congestion bottlenecks.



Health Benefits Program



Air filters for schools or vegetation buffers to reduce the harmful effects of air pollution.

EV Car-Share & Charging



Programs to provide short-term rental of electric vehicles and charging infrastructure for Zero-emission personal vehicles and trucks.

Local Hire and Workforce Development



Targeted and local hire programs to increase the share of public dollars that is devoted to creation of local jobs in the communities, and education/training of the local workforce.

Anti-displacement Strategies



Affordable housing policies, low-income rental assistance programs, tenants' rights education and legal representation to prevent unjust evictions.

Community Development Programs



Incentive programs to build affordable and mixed income housing, development of local parks, and other community resources

Zero Emissions Trucks



Program to reduce diesel trucks in favor of zero emissions trucks

Travel Reduction Strategies to Reduce Vehicle Trips



Transit Incentives



Provide transit passes to workers or students to encourage transit use.

Driving Disincentives



Parking restrictions, higher parking charges, tolls, and other policies to encourage alternative modes of travel to the automobile.

Carpool and Vanpool Programs



Programs to increase the number of people traveling per vehicle and reducing single-occupant vehicle trips.

On-Dock Freight Rail Facilities



Freight rail infrastructure in port facilities to reduce truck trips associated with goods movement.

Short-haul Freight Rail

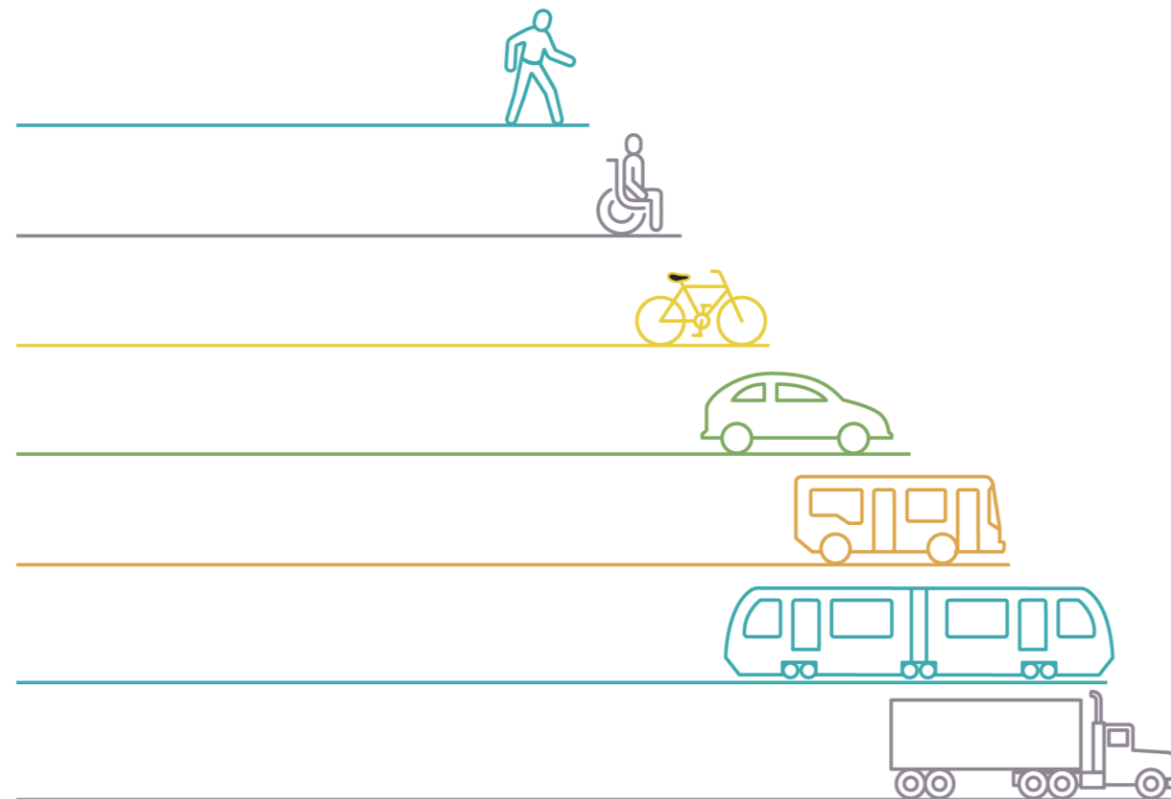


Inland port/implement short haul freight rail service to reduce local truck trips in the Corridor.

Zoom Poll: Mode of Travel

> What's your primary mode of travel in the corridor?

- Bus
- Rail
- Car
- Carpooling
- Walking
- Biking
- Paratransit
- Other



Project Hub & Interactive Mapping Tool and Survey

710 Task Force Information Hub

- > <http://www.metro.net/710-hub>
- > Extension of the current Metro.net website
- > User-friendly site for additional content
- > Graphics, meeting materials, calendar of meetings, maps, future surveys, and interactive tools



710 Task Force Information Hub

Welcome to the 710 Task Force information hub! Here you can review project information, explore an interactive map, view [project resources](#) and past meetings' videos/materials. Get involved in the planning process by attending upcoming [Task Force and Public Meetings](#).

Process and Goals



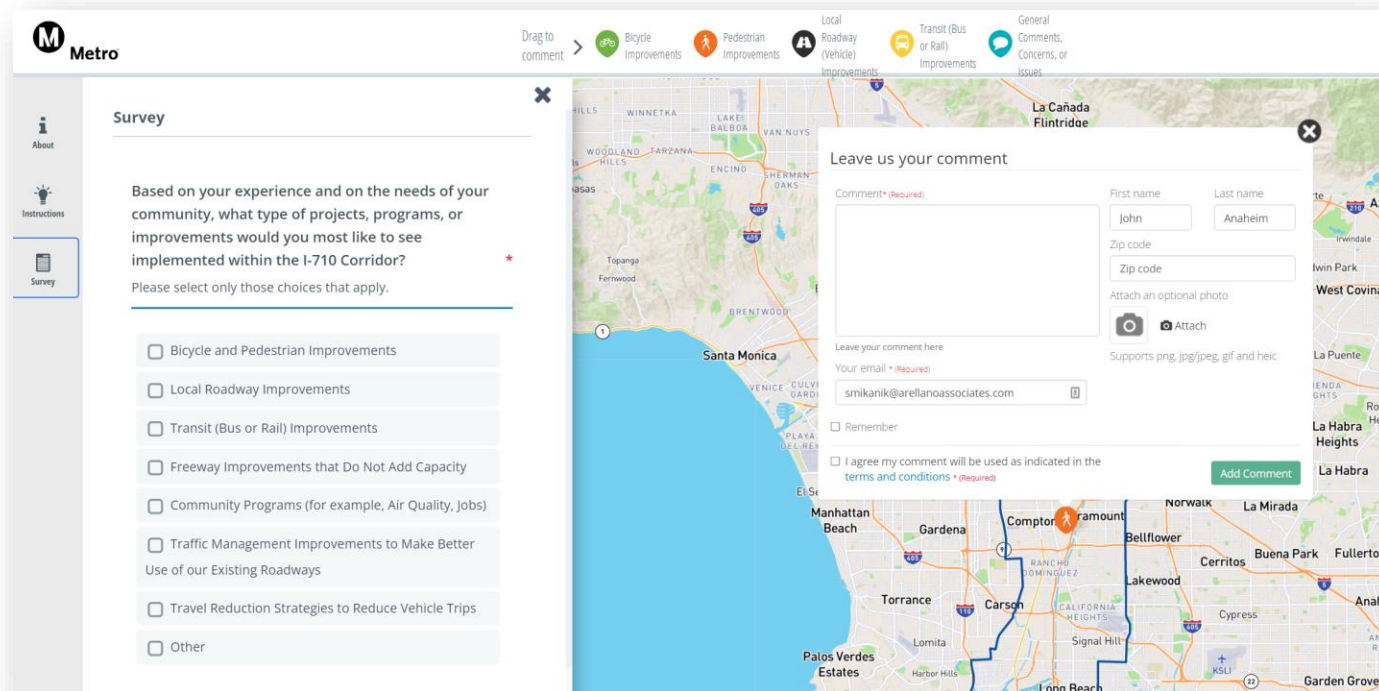
Interactive Mapping Tool and Survey

Live for Six Weeks

- > **Beta test:** July 18 available for input from CES and Coordinating Committee
- > **Full launch:** August 2
- > **Close survey:** September 12

Tool Objectives

- > **Engage the public** in the decision-making process
- > **Gather public input** on projects and programs
- > **Gather geo-coded data** (location-centric) comments on the project map



English



Español



Step-by-Step Tutorial

Interactive Mapping Tool and Survey

Survey

- > Visit our Survey & Mapping Tool at metro.net/710-hub
- > A welcome screen appears first, read through the information.
- > Navigate to the Survey tab located on the lefthand side of the page.
- > Use the first question to indicate the types of projects, programs, and improvements you'd like to see.
- > Click "Next" to answer questions that will ask you to elaborate on the selections you made in Question 1.
- > Once you have completed all Improvement-specific questions, the survey will ask you to tell us about yourself and leave your contact information to enter our gift card drawing. These sections of the survey are optional.
- > Finally, agree to the Terms & Conditions and select "Submit". You're done!

Interactive Map

- > Visit our Survey & Mapping Tool. metro.net/710-hub
- > Decide what area you would like to make a comment on. Zoom into that area on the map.
- > Determine which category best describes your comment (Bicycle Improvements; Pedestrian Improvements; Local Roadway Improvements; Transit Improvements; General Comments, Concerns, or Issues; or Other Mobility Improvements).
- > Click the corresponding marker, located at the top of the screen, and drag it to the relevant location. Please note that comments can only be added within the study area (blue line).
- > A box will pop up when you drop the marker onto the map. You can fill it out with your comment, contact info, and even a relevant photo.
- > Once you finish, agree to the Terms & Conditions and select "Add Comment". Your comment will now populate on the map!
- > Repeat this process as many times as you want to share all relevant feedback with our team.



Agenda #3

Interactive Breakout Sessions:
Receive Input on Project & Programs

Zoom Poll: Demographics

For the purposes of fulfilling our guiding principle of equity, it is useful to have key demographic information.

> What's your race/ethnicity?

- Asian/Pacific Islander
- Black/African American
- Latino/Hispanic
- Native American
- White/Caucasian
- Other
- Prefer not to respond

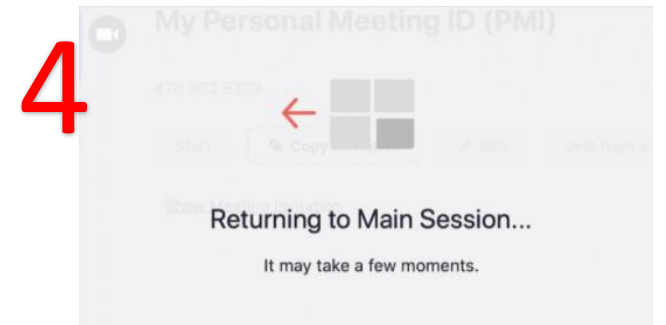
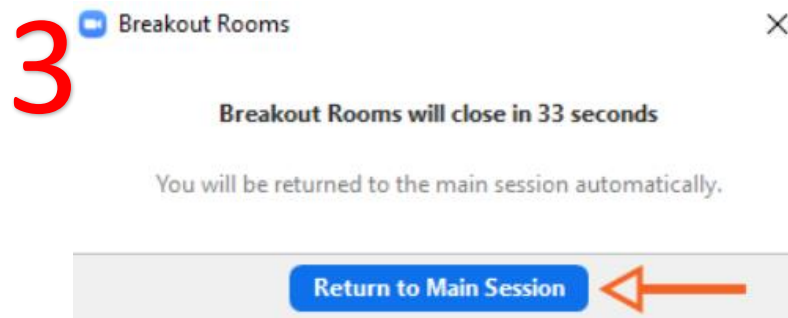
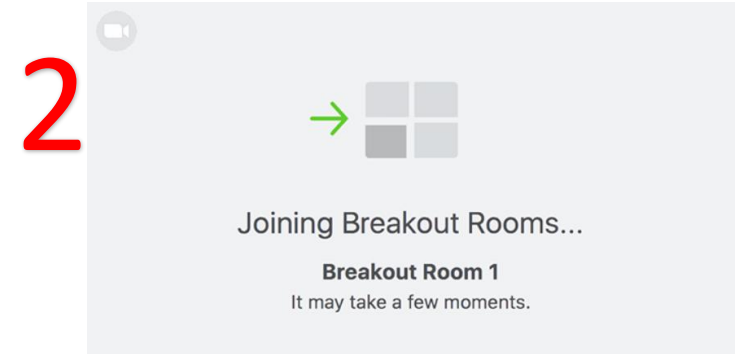
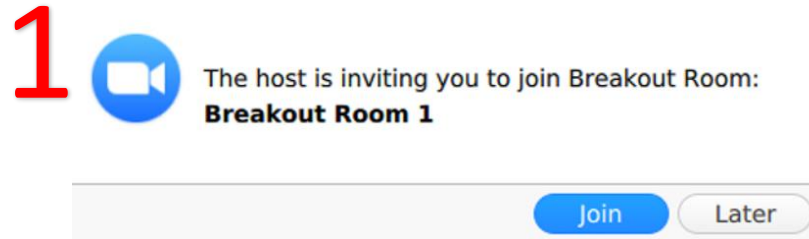
> What is your total household earnings annually?

- Less than \$5,000
- \$10,000 - \$14,999
- \$15,000 - \$19,999
- \$20,000 - \$24,999
- \$25,000 - \$34,999
- \$35,000 - \$49,999
- \$50,000 - \$74,999
- \$75,000 - \$99,999
- \$100,000-\$149,999
- \$150,000 or more

Breakout Groups

Instructions

- > **Format review:**
 - Facilitators, notetaker, logistics support
 - Each breakout room is organized by geographic area or language
- > **Duration:**
 - 60 minutes, then everyone will return to the main room
- > A representative from each breakout room will give a recap of the discussion



Breakout Groups

Meet Your Breakout Group Facilitators

Breakout Room # 1 (Main Room):

- *Southern Segment* - Michael Cano & Susan DeSantis

Breakout Room # 2:

- *Corridor-Wide (en Español)* - Ernesto Chaves & Roberto Cálix

Breakout Room # 3:

- *Northern Segment* - Laura Adleman & Melissa Holguin

Breakout Room # 4:

- *Southeast Los Angeles (SELA)* - KeAndra Cylear-Dodds & Erika Morales

Breakout Room # 5:

- *Mid-Corridor* – Susan Ambrosini & Jessica Medina

Breakout Room Report-Outs

Agenda Item #6: Public Engagement Efforts

Engagement Plan to Support Multi-Modal Strategies, Projects, & Programs

Key Activities

- > **Engage** schools and school districts, faith-based groups, elected offices, parent and business groups
- > **Extended engagement** by Task Force members and CLC members
- > **Toolkit** – digital collateral materials, including social media widgets and shareable links
- > **Notification flyer distribution**
 - Printed flyer drop-offs to public counters (e.g., libraries, schools, and city halls)
 - Digital flyer distribution through eblasts, websites, and social media
- > **CBO Partnering Strategy** – establish partnerships with CBOs to engage their stakeholders to identify transportation strategies, projects, and programs in their communities to develop an Investment Plan
- > **In-person/virtual community events and meetings** hosted by community partners
- > **Office hours** - virtual and in person
- > **Social and digital campaign**
- > **Announcements** at Task Force, Community Leadership Committee, Coordinating Committee, and working group meetings

Engagement Plan to Support Multi-Modal Strategies, Projects, & Programs

CBO Partnering Strategy

- > CBO Partnering Strategy – establish partnerships with CBOs to engage their stakeholders to identify transportation strategies, projects, and programs in their communities to develop an Investment Plan

Zoom Poll: I-710 South Corridor Attendance

> Was this your first time participating in an I-710 South Corridor meeting?

- Yes**
- No**

Zoom Poll: How did you hear about this event?

> How did you hear about this event?

- Flyer
- Email
- Metro website
- Social Media
- Family/Friend
- Other

Closing, Upcoming Meetings & Thank you

Stay connected to this project



Michael Cano, *Executive Officer (interim)*
Countywide Planning & Development
Metro
One Gateway Plaza, MS 99-13-1
Los Angeles, CA 90012



213.922.4710



710corridor@metro.net



metro.net/projects/i-710-corridor



@metrolosangeles



losangelesmetro

Thank you for joining us!

MSPP Meeting #1
Tuesday, August 30, 2022 | 5:00-7:00pm
COMMENTS & QUESTIONS

| AGENDA SECTION | NAME | QUESTION/COMMENT |
|---|----------------------|--|
| Agenda Item #1: Project Update 1.2 Project Hub & Interactive Mapping Tool and Survey | Nikki Okuk, CALSTART | how much interaction has the tool had so far? |
| Agenda Item #1: Project Update 1.2 Project Hub & Interactive Mapping Tool and Survey | Clara Solis | I would like to see the results can you put in chat at least |
| Agenda Item #1: Project Update 1.2 Project Hub & Interactive Mapping Tool and Survey | Evelyn Nuno | It would be interesting to see which mode of transportation folks wish they could choose if it was more convenient |

