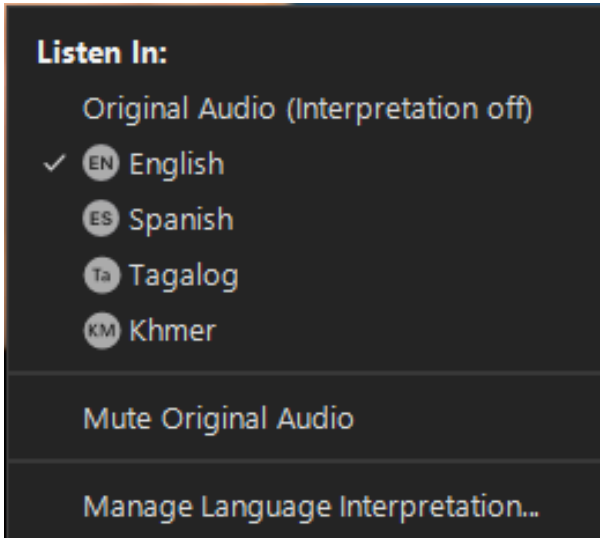




We're developing a new vision for the
Long Beach-East Los Angeles Corridor Mobility Investment Plan



- > This meeting is transmitted in English, Spanish, Khmer and Tagalog.
- > Everyone must choose the preferred language they would like to hear the meeting in
- > Click the **Interpretation** icon in your meeting controls to enter an *English, Spanish, Tagalog, Khmer* room
- > To hear the interpreted language only, click **Mute Original Audio** (Optional)

- > *Esta reunión se transmite en inglés, español, jemer y tagalo*
- > *Todos deben elegir el idioma preferido en el que les gustaría escuchar la reunión*
- > *Haga clic en el icono de **Interpretación** en los controles de su reunión para ingresar a una sala virtual para la interpretación al inglés, español, jemer o tagalo*
- > *Para escuchar solo el idioma interpretado, haga clic en “**Mute Original Audio**” para “**Silenciar audio original**” (Opcional)*

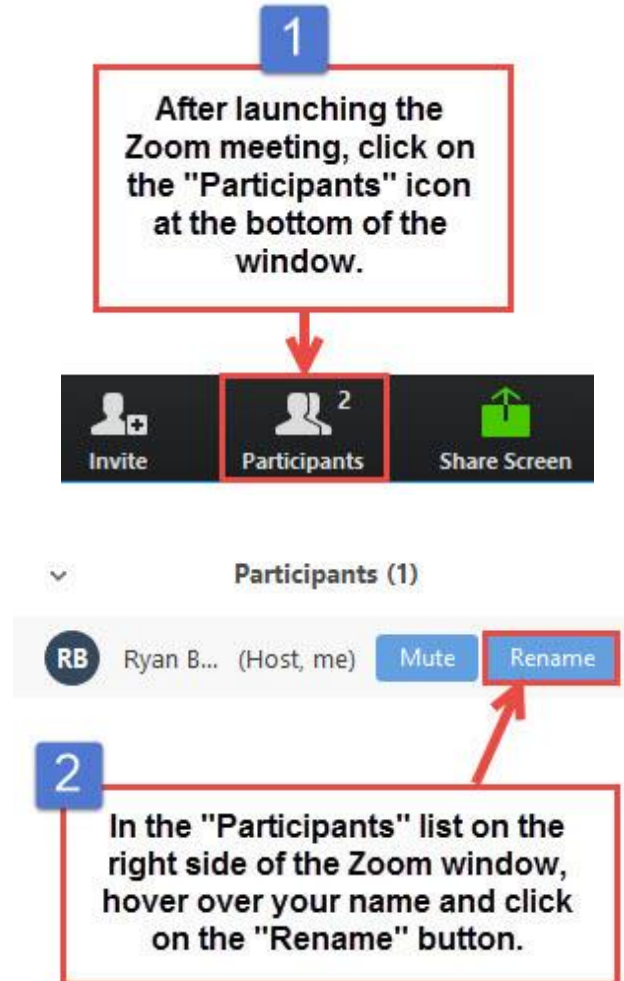
Zoom Protocols/*Protocolos de Zoom*

- > Click **Raise Hand** in your meeting controls or
- > **Press*9** on the phone line.
- > To lower your hand, click **Raise Hand** in your meeting controls.
- > Comments & questions can also be provided in writing by using the **Q&A** function.
- > The **Q&A** button is located on the control panel at the bottom of your screen.
- > Tech Support - Phone: 323.609.3345
Monitoring, translation support

- > *Haga clic en “**Raise Hand**” para “**Levantar la mano**” en los controles de la reunión o*
- > ***Presiona *9** en la línea telefónica.*
- > *Para bajar la mano, haga clic en “**Raise Hand**” para “**Levantar la mano**” en los controles de la reunión.*
- > *Los comentarios y las preguntas también se pueden proporcionar por escrito mediante la función de **Q&A**.*
- > *El botón **Q&A** se encuentra en el panel de control en la parte inferior de la pantalla.*
- > *Llame a la Asistencia Tecnológica por teléfono al 323.609.3345 para ayuda con la traducción*

Task Force and CLC Member Identification

Task Force and CLC Members, please change your Zoom screen name to include: Name and Organization/Jurisdiction



Detailed Agenda

12pm **Welcome and Opening Remarks**

12:05pm **Agenda Item #1: Overview of the Multimodal Strategies, Projects, and Programs (MSPP) Initial List**

- Overview, Framework, and Organization

12:20pm **Agenda Item #2: Overview of MSPP Categories**

- Task Force Discussion with Metro Team and Technical Experts

1pm **Adjournment**



We're developing a new vision for the
Long Beach-East Los Angeles Corridor Mobility Investment Plan

Welcome!

Draft Initial Project List “Lunch and Learn”

Thursday, January 5, 2022



Erika C.B. Morales

Partner, Morales + Morales, Inc.

Metro Project Team



Michael Cano

Countywide Planning & Development
Federal/State Policy & Programming



KeAndra Cylear Dodds

Equity and Race



Ernesto Chaves

Highway Programs



Lilian De Loza-Gutierrez

Community Relations

Detailed Agenda

12pm **Welcome and Opening Remarks**

12:05pm **Agenda Item #1: Overview of the Multimodal Strategies, Projects, and Programs (MSPP) Initial List**

- Overview, Framework, and Organization

12:20pm **Agenda Item #2: Overview of MSPP Categories**

- Task Force Discussion with Metro Team and Technical Experts

1pm **Adjournment**

Meeting Objectives

In this “Lunch and Learn” session, Task Force Members will:

- Learn about the Project List and the process by which it was assembled
- Understand the categories and sub-categories on the Project List, so that it can be evaluated by the Task Force.

**We will be discussing the Project List more at the January 9th Task Force meeting. Today’s meeting is an orientation and a conversation on the Initial Project List and a chance to get questions answered by the Metro Team in an informal setting.*

Task Force actions needed:

- Make sure you understand *how* the project list was developed and *how* it is organized.
- Provide preliminary feedback about gaps and types of projects and programs included.

Agenda Item #1: Multimodal Strategies, Projects & Programs Initial List

What We're Working Toward



Initial List of Projects & Programs: Anticipating the Next Phase

Multimodal Strategies, Projects & Programs

Compile complete list of Projects/ Programs

Task Force, CLC, and WG review

Revised list of Initial Projects / Programs

Task Force, CLC, & WG recs

Bundle projects for evaluation

Public feedback throughout

Evaluation Framework

Develop criteria and performance measures

Task Force and CLC feedback

Evaluate bundled projects by these criteria and measures

Public feedback throughout

Initial List of Projects & Programs: Community Engagement

11

CBO partners
socios de la CBO



5,466



stakeholders engaged so far at events
partes interesadas involucradas hasta ahora en eventos



2,900+

survey/map responses collected
encuestas/mapas de respuestas recopiladas



8,638

collateral pieces distributed at events in
English, Spanish, Khmer and Tagalog

piezas colaterales distribuidas en eventos en inglés, español, jemer y tagalo

2

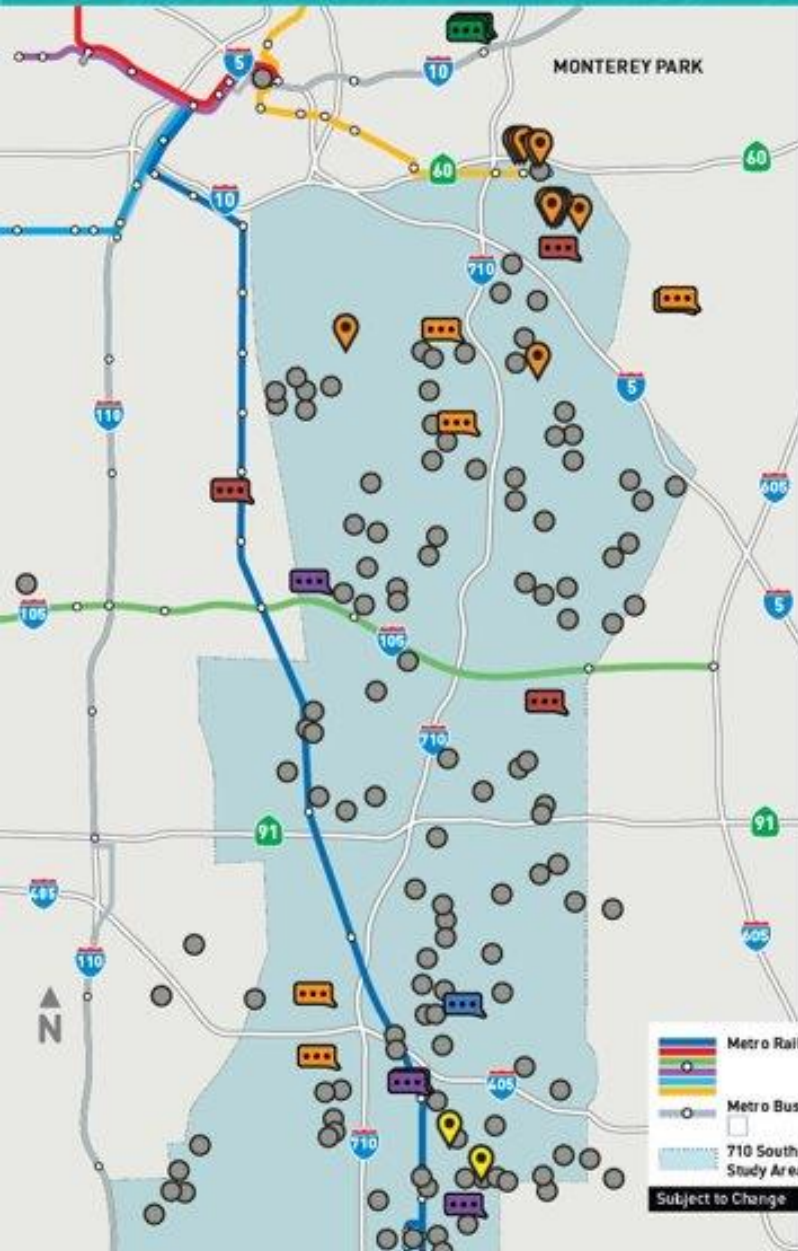
digital stakeholder survey campaigns prepared with a combined total of
campañas digitales de encuestas a las partes interesadas preparadas con un total combinado de



1,464,381

impressions
impresiones

Initial List of Projects & Programs: Community Engagement



28 CBO Engagement Events/*Eventos de CBO*



18 Pop-up and Workshop Events/*Eventos emergentes y talleres*



All Groups
Todos grupos



Senior Groups
Grupos de personas mayores



Labor Unions
Los sindicatos



Cultural Groups
Grupos culturales



Faith Based Groups
Grupos basados en la fe



Student Groups
Grupos de Estudiantes

4800 flyers in multiple languages distributed at
folletos distribuidos en varios idiomas

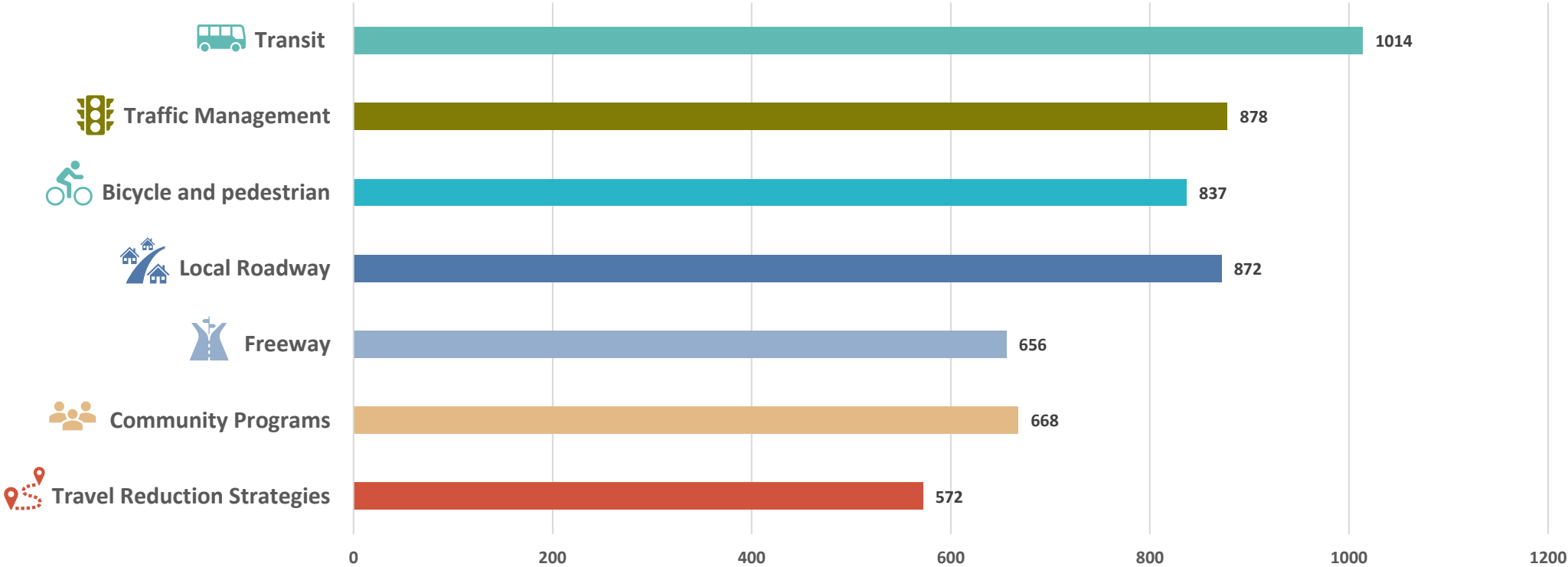
166 locations throughout the corridor
distribuidos en lugares clave a lo largo del corredor

Engagement efforts as of the date of this presentation.
Esfuerzos de participación a la fecha de esta presentación.

Survey Responses

Based on your experience and on the needs of your community, what type of projects, programs, or improvements would you most like to see implemented within your community and the I-710 Corridor?

Improvement Categories



Initial List of Projects & Programs: Sources

Input from Task Force, Committee, and Working Group Members

Previous Studies, Initiatives

- Metro Long Range Transportation Plan (LRTP)
- SCAG Regional Transportation Plan (RTP)
- Metro 2028 Mobility Concept Plan
- Metro Active Transportation Plan (ATP)
- City Bicycle Master Plan(s)
- I-710 Motion 5.1/5.2 Early Action Concepts
- Community Alternative 7

Agencies / Local Jurisdictions

- Caltrans Operations/Protection Program
- Gateway Cities COG Complete Streets Plans
- Gateway Cities COG Ad Hoc Committee
- Metro Transit, Rail Departments
- 14 Cities
- Port of LA / Port of Long Beach
- County of LA (Unincorporated Areas)

Public / Communities

- Social Pinpoint (SPP) Survey
- Social Pinpoint (SPP) Map
- General Public
- Public Workshops
- Community-Based Organizations
- Non-Profit Organizations

Initial List of Projects & Programs: Begin with Vision & Goals

Vision Statement & Guiding Principles (Equity, Sustainability)

Goals:

Air Quality

Mobility

Community

Safety

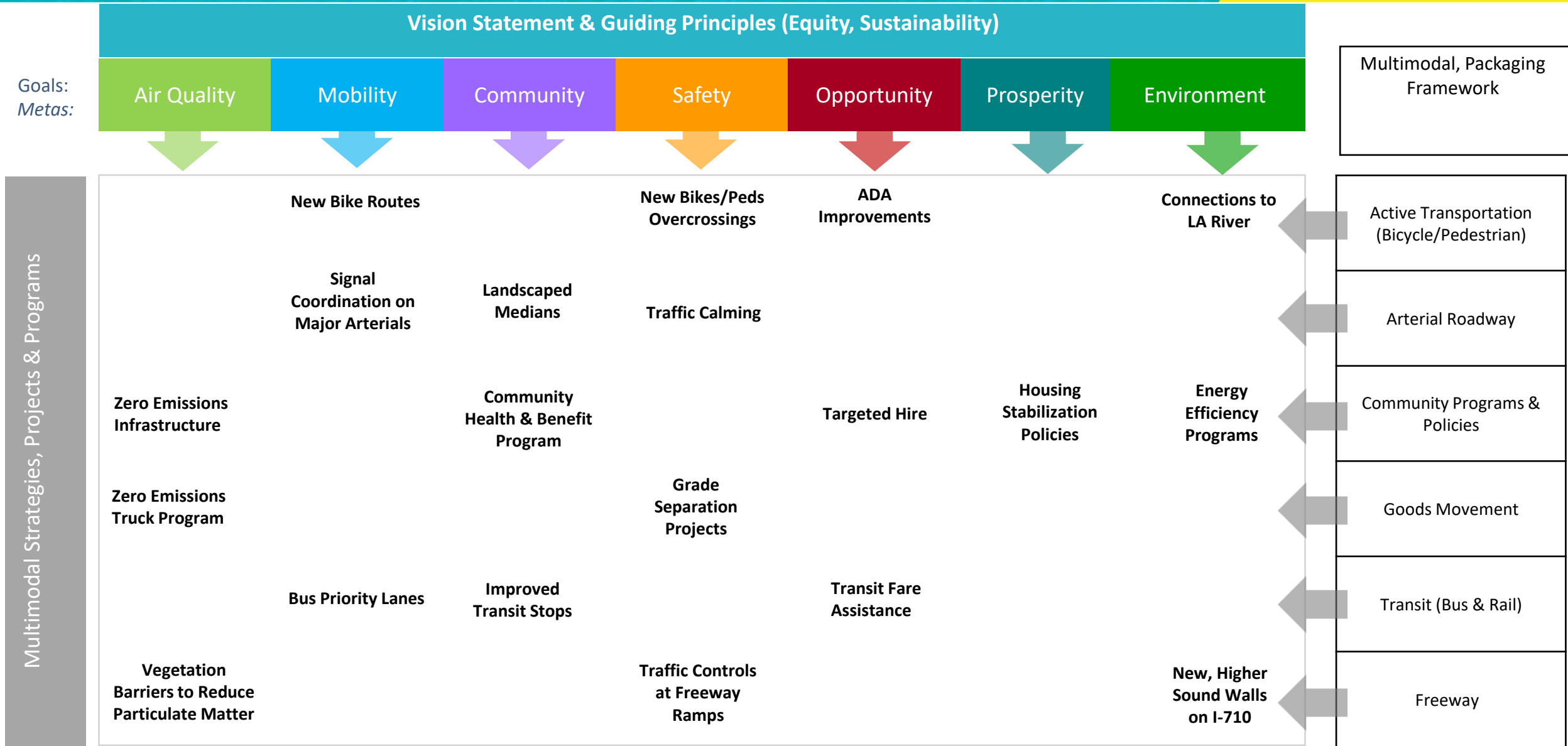
Opportunity

Prosperity

Environment

Multimodal Strategies,
Projects & Programs

Initial List of Projects & Programs: Next, Group Similar Projects



Initial List of Projects & Programs: Describing the Initial List

Initial Project List

Project ID	Name of applicant	Short description	Source	Year	Status
SDCA_0001	San Diego Regional Airport	San Diego Regional Airport	City of San Diego	2018	Advanced
SDCA_0002	San Diego Regional Airport	San Diego Regional Airport	City of San Diego	2018	Advanced
SDCA_0003	San Diego Regional Airport	San Diego Regional Airport	City of San Diego	2018	Advanced
SDCA_0004	San Diego Regional Airport	San Diego Regional Airport	City of San Diego	2018	Advanced
SDCA_0005	San Diego Regional Airport	San Diego Regional Airport	City of San Diego	2018	Advanced
SDCA_0006	San Diego Regional Airport	San Diego Regional Airport	City of San Diego	2018	Advanced
SDCA_0007	San Diego Regional Airport	San Diego Regional Airport	City of San Diego	2018	Advanced
SDCA_0008	San Diego Regional Airport	San Diego Regional Airport	City of San Diego	2018	Advanced
SDCA_0009	San Diego Regional Airport	San Diego Regional Airport	City of San Diego	2018	Advanced
SDCA_0010	San Diego Regional Airport	San Diego Regional Airport	City of San Diego	2018	Advanced

Overview: Over 200 projects and programs in the Initial List so far.

Detail:

- Some projects are specific and advanced (e.g. already have engineering/environmental studies done/underway by an agency or a local jurisdiction).
- Other projects and programs are new ideas that will need further study if recommended for the Draft Investment Plan.

Initial List of Projects & Programs: Describing the Initial List

Initial Project List

Size: Some items in the Initial List are larger and some are smaller.

The projects that are highlighted in blue are larger projects or programs (e.g. they cover a larger geographical area)

LB-ELA_0204	Pedestrian Gap Closure Projects	<p>Close gaps within the pedestrian circulation network in communities within the LB-ELA Corridor through the implementation of new pedestrian facilities. A funding program would be created to enable local jurisdictions (cities, unincorporated areas of Los Angeles County) to design and construct new pedestrian facilities in areas where this infrastructure is currently missing. Projects would include:</p> <ul style="list-style-type: none"> - New sidewalks and pedestrian trails - Extensions of existing pedestrian paths/trails - Pedestrian/bicycle overpasses - New Crosswalks/Signals for Pedestrians - Provision of connections and access to existing trails (for example, greater access to Los Angeles/Rio Hondo River Trail) - Provision of pedestrian access/connections to existing and planned Metro transit stations/stops - Implementation of Safe School Pedestrian/Biking Zones 	SPP Survey, SPP Mapping	Active Transportation / TDM	Pedestrian / First Last Mile
-------------	---------------------------------	---	-------------------------	-----------------------------	------------------------------

Initial List of Projects & Programs: Describing the Initial List

Attachment A

Attachment A - Proposed Bike Routes in the LB-ELA Corridor

Ref. #	Corridor / Alignment	Project Limits	Dir.	Type	Source
Bike-51	W 10th St/Harbor Ave/W 20th St/Delta Ave	W 9th St to Hill St	S/N	Class IIIA	Long Beach MP
Bike-52	Harbor Plaza	Harbor Scenic Dr to Queens Wy	S/N	Class IV	Long Beach MP
Bike-53	Linden Ave	Bibby Rd to San Antonio Dr	S/N	Class IV	Long Beach MP
Bike-54	Linden Ave	S 2nd St to Harding St	S/N	Class IV	Long Beach MP
Bike-55	Dairy Ave	Hill St to Spring St	S/N	Class IV	Long Beach MP
Bike-56	Dairy Ave / Loma Vista Dr / Magnolia Ave	3rd St to 20th St	S/N	Class IV	Long Beach MP
Bike-58	Myrtle Ave	Harding St to 72nd St	S/N	Class IIIA	Long Beach MP
Bike-59	Pacific Ave	Del Mar Ave to Wardlow Rd	S/N	Class IV	Long Beach MP
Bike-60	Pier J / South Waterfront Path	Harbor Scenic Dr to Harbor Plaza	S/N	Class IV	Long Beach MP
Bike-61	Spring St	DeForest Ave to Long Beach Blvd	W/E	Class IV	Long Beach MP
Bike-62	Alamos Ave	Ocean Blvd to 17th St	S/N	Class IV	Long Beach MP
Bike-63	Spring St	Long Beach Blvd to Lakewood Blvd	W/E	Class IV	Long Beach MP
Bike-64	Orange Ave	10th St to E Harding St	S/N	Class IV	Long Beach MP
Bike-65	34th St	De Forest Ave to Maine Ave	W/E	Class IV	Long Beach MP
Bike-66	6th Street	Orange Ave to San Francisco Ave	W/E	Class IV	Long Beach MP
Bike-67	Cover St	Cherry Ave to Heinemann Ave	W/E	Class IV	Long Beach MP
Bike-68	Dairy Ave	Market St to South St	S/N	Class IV	Long Beach MP
Bike-70	South St	De Forest Ave to Orange Ave	W/E	Class IV	Long Beach MP
Bike-72	Market St	Pacific Ave to Atlantic Ave	W/E	Class IV	Long Beach MP
Bike-75	Pine Ave	Shoreline Dr to Willow St	S/N	Class IV	Long Beach MP
Bike-76	San Francisco Ave/W 2nd St/Fairbanks Ave/De Forest Ave	3rd St to Anaheim St	S/N	Class IV	Long Beach MP
Bike-77	6th St	San Francisco Ave to Topaz Ct	W/E	Class IV	Long Beach MP
Bike-78	9th St/W 1 St	Southern Pacific RR Right-of-Way to W City Limits (LB)	W/E	Class IV	Long Beach MP

Page 3

Groupings: Some projects or programs are a large grouping of other smaller projects.

For example, all recommended new bike routes are placed in a separate more detailed list (**Attachment A**) because there were so many.

Initial List of Projects & Programs: Describing the Initial List

Initial Project List

Programs: Yet other items in the Initial List are a Program of projects. A program is meant to have a long life, so that new projects, such as Traffic Calming, can continue to be identified by different communities within the Corridor over a span of several years. A program is also flexible in that conditions can be placed on how the funds are distributed.

LB-ELA_0202	Traffic Calming	<p>Implement Traffic Calming Features within the LB-ELA Corridor to slow traffic on local streets or near schools. A funding program would be created to enable local jurisdictions (cities, unincorporated areas of Los Angeles County) to design, construct, and implement traffic calming features in areas that experience frequent speed violations and/or high levels of accident rates. Traffic calming features could include:</p> <ul style="list-style-type: none"> – Speed limit reductions, signage, variable speed signs, and enforcement devices – Speed bumps – Truck restrictions (trucks over a certain weight) on non-designated truck routes, including signage and geofencing alerts – Roundabouts – Bulb outs – Stop signs, traffic signals, striping, raised decorative pavement, and other traffic controls – Road diets – Speed enforcement cameras – Enhanced use of signage, striping, flashing crosswalks, other pedestrian warning devices in school zones. 	SPP Survey SPP Mapping	Arterial Roadway	Traffic Calming
-------------	-----------------	--	---------------------------	---------------------	-----------------

Vision Statement

Vision

A concise statement that captures the collective aspirations, desires, and outcomes of the project

Vision:

Approved by the Task Force on July 11, 2022

An equitable, shared I-710 South Corridor transportation system that provides safe, quality multimodal options for moving people and goods that will foster clean air (zero emissions), healthy and sustainable communities, and economic empowerment for all residents, communities, and users in the corridor.

Guiding Principles

Guiding Principle

A value that guides all processes and outcomes through a cohesive and intentional framework

Equity

“A commitment to: (1) strive to rectify past harms; (2) provide fair and just access to opportunities; and 3) eliminate disparities in project processes, outcomes, and community results.”

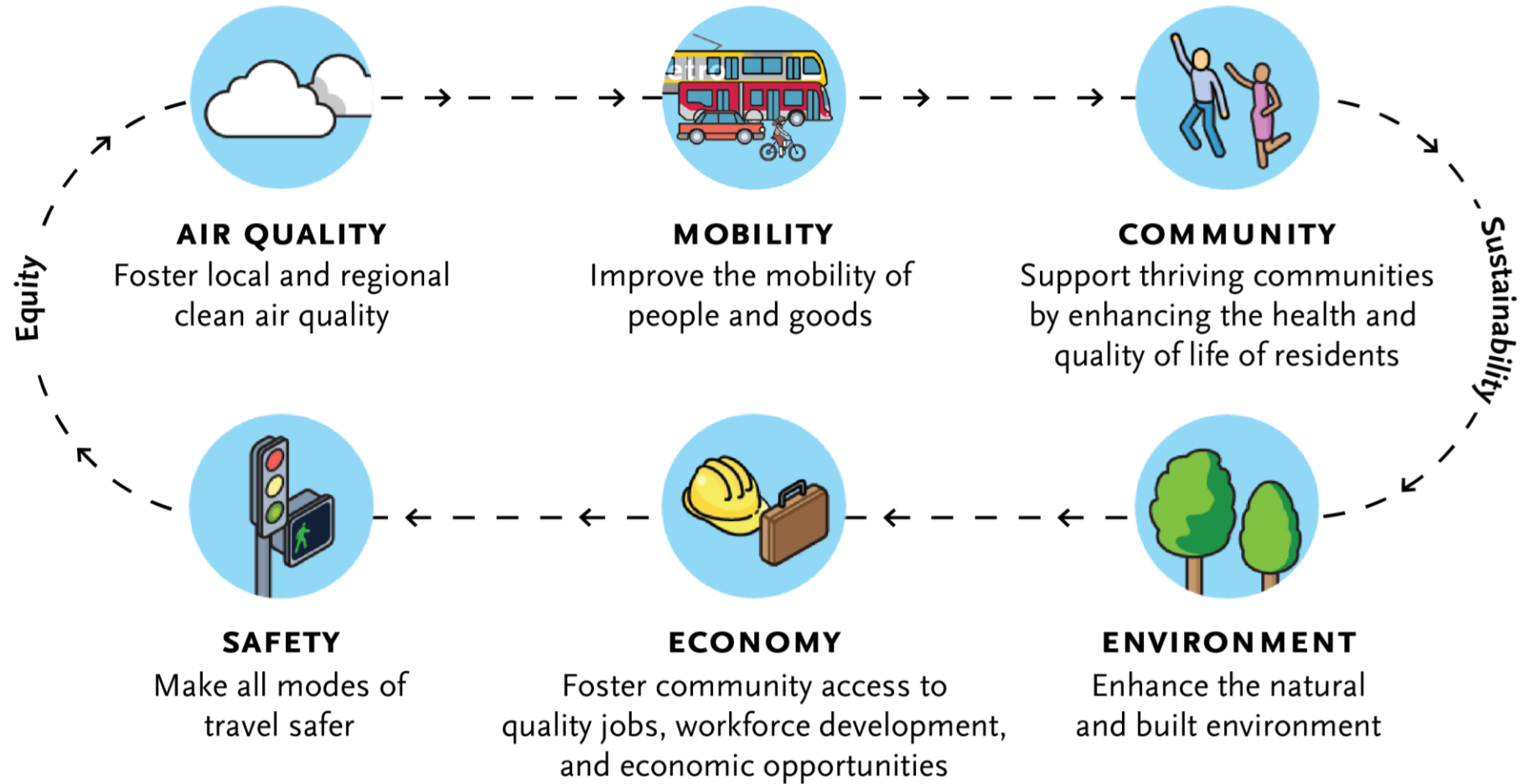
“The plan seeks to elevate and engrain the principle of Equity across all goals, objectives, strategies, and actions through a framework of Procedural, Distributive, Structural, and Restorative Equity, and by prioritizing an accessible and representative participation process for communities most impacted by the I-710.”

Sustainability

"Development that meets the needs of the present without compromising the ability of future generations to meet their own needs."

"A commitment to sustainability to satisfy and improve basic social, health, and economic needs/conditions, both present and future, and the responsible use and stewardship of the environment, all while maintaining or improving the well-being of the environment on which life depends."

Goals



Initial List of Projects & Programs: Categories

Projects are organized by “improvement category”:

All projects and programs should support a multimodal future for the Corridor. Project categories represent different modes:

Active Transportation

Goods Movement

Arterial Roadways

Transit

Community Programs

Freeway

Initial List of Projects & Programs: Sub-Categories

Active Transportation

Arterial Roadways

Community Programs

Goods Movement

Transit

Freeway

Active-Transportation Sub-Categories:

- 1. Pedestrian & First/Last Mile Improvements*
- 2. Bike Routes & Facilities*
- 3. Safety & Amenities*
- 4. Travel Demand Management*

Initial List of Projects & Programs: Active Transportation

Example Project Types Include:

Pedestrian & First/Last Mile Improvements

- New pedestrian/bike overcrossings
- New pedestrian/bike pathways
- New pedestrian/bike connections to rail, transit, LA River
- New Crosswalks, sidewalks

Bike Routes & Facilities

- New Bike Paths/Trails
- New Buffer/Barrier-Protected Bike Routes
- New Bike Lanes
- New, Signed Bike Routes

Safety & Amenities

- High visibility crosswalks
- Wider sidewalks
- Pedestrian/bike crossing enhancements
- Bike parking, lighting, repair stations
- Bike share programs
- Traffic controls for pedestrians/bikes
- ADA improvements
- Shade structures, trees, landscaping
- Security & lighting

Travel Demand Management

- Vanpools/carpool programs
- Telecommuting programs
- Promotional Campaigns to encourage Alternative Modes of Travel

Bicycle and Pedestrian Improvements



Bike Lanes



New bicycle lane on existing roadways, indicated by striping, signage, and physical barriers.

Shared-Use Path



New bicycle paths just for bicyclists and pedestrians.

Pedestrian Safety and Amenities



Wider sidewalks, lighting, benches, shade trees, landscaping, and trash receptacles to improve the safety and comfort of the pedestrian experience.

Crossing Safety Enhancements



High Visibility Paint, Flashing Signals, Pedestrian Safety Island, Curb Extensions, or Bulb-outs to create short crossing distances and increased awareness of crossing locations.

Bike Share Programs



Low-cost, short-term bike rental from strategically placed docks or stations.

Bike/Ped Traffic Controls



Leading Pedestrian Interval, Bike crossing signals, No turn on red signals, signals and controls to reduce conflicts between pedestrians, bicyclists, and drivers.

Discussion

Initial List of Projects & Programs: Arterial Roadway

Active Transportation

Arterial Roadways

Community Programs

Goods Movement

Transit

Freeway

Arterial Roadways Sub-Categories:

- 1. Complete Streets*
- 2. General Local / Regional Roadway*
- 3. Signal Coordination / TSM / ITS*
- 4. Traffic Calming*

Initial List of Projects & Programs: Arterial Roadway

Example Project Types Include:

Complete Streets

- New green spaces, trees, bioswales
- Bike and pedestrian improvements
- Public art
- Signage
- Transit stop amenities (furniture, shelters)
- Operational / safety improvements
- ADA upgrades
- LED street lighting
- Stormwater retention

Traffic Calming

- Speed Reductions
- Speed Bumps
- Truck Restrictions in Neighborhoods
- Roundabouts
- Road Diets
- Stop Signs, Traffic Signals
- Speed Enforcement Cameras
- Flashing Crosswalks
- School Zone Warning Devices

General Local / Regional Roadway

- Stormwater treatment
- Upgrade traffic signals, crosswalks, sidewalks, driveways, curb ramps, etc.
- New/improved bridges
- ADA upgrades
- Intersection Improvements
- Pedestrian circulation and safety
- Streetscape improvements
- Bike and pedestrian improvements
- Roadway widening/realignment

Signal Coordination / TSM / ITS

- Traffic / Ped signal upgrades
- Video camera installation
- Equipment upgrades
- Emergency vehicle priority
- Signage
- Signal Synchronization
- Advanced technologies to manage traffic and to inform traveling public



Intersection Improvements



Turn lanes and other design features to reduce traffic queues at congested intersections.

Traffic Calming Features



Roundabouts, speed humps, and other design features or signage to slow traffic on local streets or near schools.

Traffic Management Features



Traffic signal coordination on major arterial corridors to maximize "green time" based on actual traffic conditions.

Added Roadway Lanes



Roadway reconfiguration to add travel lanes, designate parking lanes for peak hour travel lanes, or establish bus only lanes

Parking Options



Additional street parking, public/shared parking lots, or public/shared parking structures.

Visual Improvements



Landscaping, hardscaping, public art, and other design features to improve the appearance of the roadway.

Discussion

Initial List of Projects & Programs: Community Programs & Policies

Active Transportation

Arterial Roadways

Community Programs

Goods Movement

Transit

Freeway

Community Programs Sub-Categories:

- 1. Job Creation / Work Opportunities*
- 2. Air Quality / Community Health*
- 3. Environment*
- 4. Housing Stabilization / Land Use*

Initial List of Projects & Programs: Community Programs & Policies

Example Program Types Include:

Job Creation / Work Opportunities

- Targeted Local Hire
- Employment Recruitment Initiatives
- Vocational Educational Programs
- Economic Stabilization Policies
- Workforce Education & Development
- Partnerships with Employers
- Partnerships with Academic Institutions

Environment

- Greenhouse Gas Emissions Reduction
- Renewable Energy / Solar Power Project
- Urban Greening, Tree Canopy, Green Space
- Greenbelts, Drought Tolerant Planting Parklets
- Habitat Restoration and Connectivity
- Public Art / Aesthetics
- Zero Emissions Infrastructure for Autos

Air Quality / Community Health

- Zero Emission Infrastructure for Autos
- Bus Electrification
- Community Health Benefit Programs
- Air Filters for Schools & Community Facilities
- Environmental Building Improvements
- Health Education / Outreach
- Community Health Screening
- Vegetation Barriers/Buffer Landscaping

Housing Stabilization / Land Use

- Housing / Rent Stabilization Policies
- Anti-Displacement Programs
- Rental Assistance Programs
- Inclusionary Housing
- Transit Oriented Communities
- Homeless Programs
- Partnership with Community Orgs
- Density Bonus Programs
- Community Land Trusts
- Grant Writing Assistance



Health Benefits Program



Air filters for schools or vegetation buffers to reduce the harmful effects of air pollution.

EV Car-Share & Charging



Programs to provide short-term rental of electric vehicles and charging infrastructure for Zero-emission personal vehicles and trucks.

Local Hire and Workforce Development



Targeted and local hire programs to increase the share of public dollars that is devoted to creation of local jobs in the communities, and education/training of the local workforce.

Anti-displacement Strategies



Affordable housing policies, low-income rental assistance programs, tenants' rights education and legal representation to prevent unjust evictions.

Community Development Programs



Incentive programs to build affordable and mixed income housing, development of local parks, and other community resources

Zero Emissions Trucks



Program to reduce diesel trucks in favor of zero emissions trucks

Discussion

Initial List of Projects & Programs: Goods Movement

Active Transportation

Arterial Roadways

Community Programs

Goods Movement

Transit

Freeway

Goods Movement Sub-Categories:

- 1. Freight Rail / Goods Movement TDM*
- 2. Ports*
- 3. Truck Programs / ITS*

Initial List of Projects & Programs: Goods Movement

Example Project Types Include:

Freight Rail / Goods Movement Travel Demand Mgmt.

- On Dock Rail Expansion
- New Inland Port, Greater Use of Freight Rail
- Port Railyard Expansion & Modernization
- Freight Rail Grade Separations

Ports

- Interchange Improvements
- Grade Separations
- Roadway Realignments, Safety, and Landscape Improvements
- Wharf Expansions & Vessel Emission Reductions
- Cargo Operational Efficiencies

Truck Programs / Intelligent Transportation Systems

- Zero Emissions Truck Programs
- Zero Emissions Infrastructure
- Empty Container Management
- Use of Advanced Technologies to Optimize Sequencing of Container Delivery and Pick-Ups to Reduce Congestion near Railyards & Ports

Freeway Improvements that Do Not Add Capacity



Interchange Improvements



Introduce improvements that make it safer and easier for vehicles to get on and off the freeway.

Zero-emission Truck Lane



Create a dedicated lane on the freeway just for zero emissions trucks.

Traffic Signals



Control features, such as traffic signals, to protect bicyclists and pedestrians at the freeway ramps.

Landscaping Features



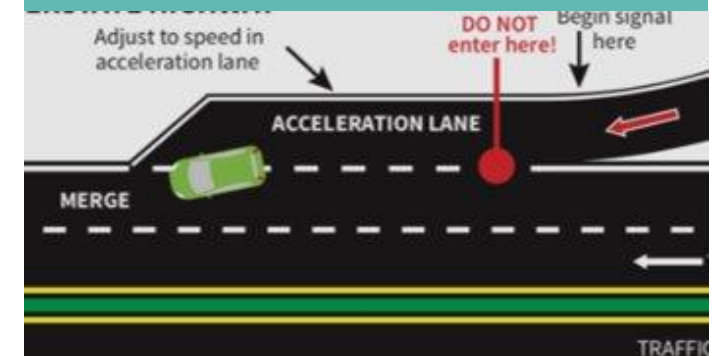
Incorporate landscaping, hardscaping, and other design features along the freeway to improve visual experience.

Sound Wall Improvements



Higher sound walls along the freeway to reduce noise.

Design Improvements



Spot improvements, such as acceleration/deceleration lanes near interchanges, to relieve congestion bottlenecks.

Discussion

Initial List of Projects & Programs: Transit

Active Transportation

Arterial Roadways

Community Programs

Goods Movement

Transit

Freeway

Transit Sub-Categories:

- 1. High-Capacity Transit (Rail/BRT)*
- 2. Transit Amenities*
- 3. Bus Transit*
- 4. Rail Line / Station Improvements*

Initial List of Projects & Programs: Transit

Example Project Types Include:

High-Capacity Transit (Rail/BRT)

- New light-rail stations/lines
- Light Rail line Extensions
- Bus Rapid Transit project

Transit Amenities

- Bus shelters and lighting
- Transit security features
- Web app for transit times
- Transit discounts / free passes
- Transit education program
- Customer experience program
- Real time displays
- Transit Cleaning & Maintenance
- Station furniture and shade
- ADA improvements
- Traffic control for pedestrians and bikes

Bus Transit

- Express Service
- Shuttles
- Electric bus charging
- On-demand bus (Micro-Transit)
- Improve bus speeds
- Increased bus frequencies
- Bus Priority Lanes
- Bus electrification projects

Rail Line / Station Improvements

- Station improvements
- Signal prioritization for trains
- Station maintenance
- Pedestrian safety improvements at stations
- Improved bike/ped connections
- Train reliability improvements
- Grade separations for trains

Transit (Bus or Rail) Improvements



Transit Service Improvements



Additional transit routes or increase in frequency of existing services to reduce waiting times at bus stop and train stations.

Bus Priority Lanes



Bus priority lanes on local streets to improve bus travel times and reliability.

Improved Transit Amenities



Improved amenities such as lighting, security cameras, shelters at bus stops and at train stations.

Transit Fare Discounts



Increased transit fare discounts for low-income riders, students, and seniors.

Shuttle Services



On-demand transit shuttles (shuttle rides by appointment) in more communities.

Bus Boarding Improvements



Improvements for more efficient bus stopping and boarding such as all-door boarding, and/or design features such as bus bulb-outs or boarding islands

Discussion

Initial List of Projects & Programs: Freeway

Active Transportation

Arterial Roadways

Community Programs

Goods Movement

Transit

Freeway

Freeway Sub-Categories:

- 1. Congestion Pricing Option*
- 2. Freeway Amenities / ITS*
- 3. Freeway Improvements*
- 4. Zero Emissions Lanes on I-710*

Initial List of Projects & Programs: Freeway

Summary of Project Types Include:

Congestion Pricing Option

Congestion Pricing to charge single occupant vehicles while carpools, buses, zero emissions trucks and zero emissions autos would travel free.

Freeway Improvements

Interchange Improvements
Ramp Safety & Redesign
Auxiliary & Operational Lanes
Traffic Controls to Project Bikes / Peds at Freeway Ramps
Truck Bypass Lanes
Freeway Lids, Caps, Widened Bridge Decks to Provide "Greenbelt" Connections over I-710/LA River

Freeway Amenities / ITS

Particulate Matter Reduction Pilot Project
Freeway Repair & Safety projects
Soundwalls
Drought Tolerant Landscaping

Zero Emissions Lanes on the I-710

Zero-Emission Truck Travel Zone Restrictions
Zero-Emissions Truck Lanes



Transit Incentives



Provide transit passes to workers or students to encourage transit use.

Driving Disincentives



Parking restrictions, higher parking charges, tolls, and other policies to encourage alternative modes of travel to the automobile.

Carpool and Vanpool Programs



Programs to increase the number of people traveling per vehicle and reducing single-occupant vehicle trips.

On-Dock Freight Rail Facilities



Freight rail infrastructure in port facilities to reduce truck trips associated with goods movement.

Short-haul Freight Rail



Inland port/implement short haul freight rail service to reduce local truck trips in the Corridor.

Discussion

Closing Remarks and General Public Comment

Upcoming Meetings and Project Information

Community Leadership Committee Meeting

- > Meeting #11a
Thursday, January 19, 5-7pm
- > Meeting #11b
Thursday, January 23, 5-7pm

Task Force Meeting

- > Task Force Meeting #17
Monday, February 13, 5-7pm

Working Group Meetings

- > Equity Working Group #9a
Thursday, January 12, 5-7pm
- > Equity Working Group #9b
Thursday, January 26, 5-7pm

- > Zero-Emissions Truck Working Group #12
Tuesday, January 17, 1-3pm

For the most updated list
of meeting dates, please visit
<http://www.metro.net/710-hub>

Stay connected to this project



Michael Cano, LA Metro Executive Officer (interim)
Federal/State Policy & Programming
Countywide Planning & Development



213.418.3010 W
213.305.0423 C



710corridor@metro.net



metro.net/projects/i-710-corridor



@metrolosangeles



losangelesmetro

Thank you for joining us!