

Los Angeles County
Metropolitan Transportation Authority

Metro Division 13 Quarterly Project Status Report



Metro®

01083116 © 2012 LACMTA

METRO DIVISION 13 PROJECT

QUARTERLY PROJECT STATUS REPORT

THE PREPARATION OF THIS DOCUMENT HAS BEEN FINANCED IN PART THROUGH A GRANT FROM THE U. S. DEPARTMENT OF TRANSPORTATION, FEDERAL TRANSIT ADMINISTRATION (FTA).

JUNE 2013

TABLE OF CONTENTS

	Page No.
Project Overview & Status.....	1-2
Management Issues.....	2-4
Project Status	
• Project Scope.....	5-8
• Schedule	
○ Key Milestones Six-Month Lookahead	9
○ Project Summary Schedule	10
○ Critical Path Narrative.....	11
• Project Cost Status.....	12-13
• Financial Grant Status.....	14
• Staffing.....	15
• Environmental.....	16
• Quality Assurance.....	16
• Safety.....	17
• Third Party.....	18
Contract Status.....	19
Construction Photographs.....	20-35
Chronology of Events.....	36-38
Appendices.....	39-41

PROJECT OVERVIEW & STATUS

The Division 13 Bus Maintenance and Operations facility is a bus maintenance, operations, and service facility located in downtown Los Angeles, California. The project is to be constructed on existing LACMTA properties located at the northeast corner of East Cesar Chavez Avenue and Vignes Street. The project delivery method is Design/Bid/Build.

The facility is designed to accommodate a fleet of CNG buses and consists of a multi-level structured parking garage, a maintenance building, bus fueling, bus washing, chassis wash and non-revenue vehicle washing, non-revenue vehicle fueling, and maintenance and transportation offices and support areas.

Division 13 strives to set an example of sustainable design (LEED Gold goal) and the responsible use of natural resources. Many of the materials specified in the construction of this project are regionally sourced and/or have a high recycled content. Attention has been paid to the use of potable water with an exemplary system of storm water reclamation and reuse for bus operations and washing, and low maintenance native vegetation. Storm water run-off and the urban heat island effect are also addressed by a demonstration green roof on the Transportation Building.

Service and vehicle equipment include two and three-post in-ground lifts with modern, computer controlled automated adjustment, a bus wash system utilizing reclaimed storm water, non-revenue vehicle wash systems utilizing 100% recycled water, three-axis lift systems for accessing roof mounted equipment on buses, mobile work platforms at lower level work areas, high-density palletized stacking systems, carousel and vertical retrieval modules for parts.

Bids opened on September 20, 2011 with the lowest responsive bidder selected for award of a contract. Metro issued a notice of award to McCarthy Building Companies Inc. on May 15, 2012.

On May 24, 2012, McCarthy was authorized via a limited Notice to Proceed (NTP) to commence administrative services as Metro worked with McCarthy to incorporate the subsequently approved Project Labor Agreement (PLA) policy into Division 13's Special Provisions. After further consideration Metro's request for the PLA was withdrawn. On July 23, 2012, Metro issued a formal NTP to McCarthy to start constructing Division 13. On July 31, 2012, Metro held a formal project contract kick-off meeting with McCarthy and project construction meetings with McCarthy were scheduled every week thereafter.

The City of Los Angeles also issued Metro a Revocable Permit to close Lyon Street as part of the Lyon Street Vacation. As a result, Metro also constructed a new employee access road through Keller Street for the Regional Rebuild Center to alleviate traffic congestion from the closure of Lyon Street. Staff continues to work with the City's various departments for off-site street improvement approvals and permits. A critical item Metro is pursuing is the proposed traffic signal at Division 13's bus entrance/exit on Vignes Avenue and the City's Department of Transportation is reviewing our traffic signal and striping plans.

PROJECT OVERVIEW & STATUS (Continued)

On January 16, 2013, Metro received three bids for Division 13 Compressed Natural Gas (CNG) Fueling Facility. Only one bid was accepted as technically qualified. As the CNG Fueling Facility would be designed and constructed at the same time the Division 13 construction is occurring it is imperative to get the CNG contractor on-board as soon as practical to start coordinating to avoid potential schedule changes and cost increases. Planned recommendation to April 2013 Metro Board to award contract to lowest responsible bidder.

In March 2013, the Board approved a Motion regarding Division 13 to: (1) underground the electric utility poles on Cesar Chavez; and (2) that the project maintain a minimum contingency budget of 3%. Staff is in process with complying with this Motion.

In April 2013, staff identified the additional funding source to maintain a minimum project contingency of 3%. In addition, the City of Los Angeles Department of Water and Power agreed to assist in funding at least \$200,000 to underground the electrical utility. On April 25, the Board approved staff recommendations to increase the project budget including reestablishing the project contingency at least 3% and awarded a Design/Build/Operate/Maintain contract to Clean Energy.

MANAGEMENT ISSUES

Concern No. 1: Relocation of Existing Fiber Optic and Copper Cables

Status/Action Metro installed temporary IT/Communication Systems between the Metro Gateway Building and the Central Maintenance Facilities Buildings. The existing fiber optic and copper duct bank interferes with demolition and construction. Metro is coordinating with AT&T and Time-Warner cable to relocate permanent fiber optic and copper cables on Lyon Street, Vignes Street, Cesar Chavez Avenue and the new Metro Drive.

Concern No. 2: Unforeseen Site Conditions

Status/Action Metro continues to coordinate unforeseen site conditions, including Southern California Gas Company abandoned features, impacting the drilling, setting and pouring of soldier piles and excavation of site with the contractor.

Concern No. 3: Project Schedule Re-assessment

Status/Action The June 2013 Schedule update had 122 working days of negative float. The schedule was rejected and the Contractor was reviewed and the Contractor was directed to provide a written Time Impact Analysis (TIA) illustrating the impact of the delays on the Critical Path utilizing the current CPM Schedule and a separate fragnet showing Contractor's plan to mitigate.

MANAGEMENT ISSUES (Continued)

Concern No. 4: Project Cost Re-assessment

Status/Action Professional Services costs are being reassessed, especially those related to design cost.

Concern No. 5: Buy America for Off-Site Utilities

Status/Action **Closed:** Metro is preparing a mitigation plan that resulted in all utility agencies agreeing to comply with Buy America requirements.

Concern No. 6: Utility Relocation

Status/Action Metro and contractor continue to coordinate with the City of Los Angeles about encountering unforeseen obstructions during excavation for utilities at the intersection of Cesar Chavez Avenue and Vignes Street.

Concern No. 7: Undergrounding of Utilities on Cesar Chavez Avenue

Status/Action Metro and contractor restart coordination effort with Departments of Water and Power, Transportation and Bureau of Engineering for executing design for undergrounding utilities along Cesar Chavez Avenue.

Concern No. 8: Unanticipated Archaeological Discovery

Status/Action **Closed:** Fossilized human remains were discovered during excavation on Vignes Street for storm drain pipe. Metro coordinated with the Los Angeles County Coroner, Native American Heritage Council, FTA and SHPO. The fossilized tibia bone was given to the most likely descendent for reburial

Concern No. 9: Project Contingency Budget

Status/Action **Closed:** Staff identified the additional funding source to maintain a minimum project contingency of 3%. In April 2013, the Board approved staff recommendation to increase the Life-of-Project Budget.

Concern No. 10: CNG Fueling Facility

Status/Action **Closed:** In April 2013, the Metro Board approved to award CNG/D/B/O/M contract to Clean Energy.

MANAGEMENT ISSUES (Continued)

Concern No. 11: Lyon Street Vacation

Status/Action Issues with demolition and reconnection of existing utilities has delayed excavation of Lyon Street, potentially impacting construction of the new building foundations and progress of related project work.

Concern No. 12: Soil Export and Import Issues

Status/Action Over excavation and shoring resulted in a significant and unanticipated export of Southern California Gas contaminated soil. Contract had to import additional soils to be used as structural backfill throughout the site.

PROJECT SCOPE

PROJECT SIZE:

Site Area:

8.25 Acres (Division 13 only) / 10.58 Acres (including the entire site area)

Garage and Bus Fueling/Washing:

442,655 sf (~145,000 sf on each of 3 floors; lower level: employee & visitor parking; main level: bus parking, fuel & wash facilities; upper level: bus parking)

Maintenance:

71,000 sf (~7,800 sf – lower level; ~54,000 sf – main level; ~9,200 sf mezzanine level)

Operations/Transportation Building:

21,000 sf (~5,500 sf – lower level; ~9,000 sf – main level; ~6,500 sf – level two)

Bus Parking:

200 equivalent bus parking spaces

Employee Parking:

397 Spaces

FEDERAL GRANTS AWARDED TO PROJECT:

\$47,750,000 State of Good Repair Grant

\$5,500,000 Clean Fuels Grant

PROJECT BACKGROUND:

Public and infrastructure projects represent a commitment by government to the people they represent. The LA Metro Division 13 project is an example of this commitment. Its high-quality design will convey an element of respect to both the citizens that engage public transportation during their daily routine, and to those the agency employs to operate within the facility. As an efficient and highly functional facility, Division 13 is designed to realize operational savings while being a responsible, sustainable and aesthetically pleasing addition to the community.

- First new maintenance and operation facility to be commissioned by Metro in over 27 years with the goal of providing better service for LA residents
- Designed to optimize Metro's bus transit service throughout Central Los Angeles and the surrounding area
- Division 13's prominent siting will alter the urban landscape by replacing an inefficient surface parking lot with a landmark architectural icon for the LA community

PROJECT SCOPE (Continued)

- The LA Metro Division 13 project:
 - Includes a maintenance facility with 19 service bays for the operation and maintenance of Metro's fleet
 - Can accommodate up to 200 CNG standard sized buses
 - Is designed to handle 60' long articulated buses
 - Provides a two story bus parking garage with fuel and wash facilities that can park and service 200 standard sized CNG buses daily and a Fleet Operations and Transportation Building for 329 employees
 - Will also accommodate 41 non-revenue vehicles and employee parking for 397

- Sustainable design features:
 - Site and building shade structures
 - Natural ventilation
 - Glare and heat gain reduction glazing
 - Daylighting to all major work areas
 - 275,000 gallon underground storm water retention tank
 - Green Roof garden, accessible to Metro employees
 - Cool Roof to reduce Heat Island Effect
 - Water efficient landscaping
 - Registered with the USGBC as Pursuing LEED-NC Gold

Division 13's primary architectural concept addresses the two major street facades of the facility with one palette of materials reflecting two separate conditions of movement. The Cesar Chavez elevation uses architectural panels to screen bus parking and circulation ramps, reflecting the high speed automobile activity that defines western American cities. At night the façade's focus shifts to highlight the functional movement of buses. The Vignes St. elevation addresses a slower, pedestrian scale appropriate to its urban setting and will encourage the public to utilize the urban plaza adjacent to the intersection of the two streets. The transportation building resides in front of the two story garage and is placed adjacent to the street to accommodate a need to screen operational functions while promoting a walkable, urban environment.

PARKING STRUCTURE

The parking structure will be in 3 levels as explained below.

- The Ground Level Parking will accommodate fare retrieval, bus fueling, and wash activities with enough storage area to accommodate 52 standard buses. The ground floor of the parking structure will be dedicated to bus maintenance activities including tire and repair bays, a brake shop and a materials handling area. An entry lobby, providing elevator and stairway access to each floor of the proposed parking structure, will be located at the northeast and northwest portion of the parking structure.

PROJECT SCOPE (Continued)

- The 2nd level Parking will provide parking for approximately 108 buses and 40 layover spaces. This level will also provide office spaces, break rooms, training room, rest rooms and conference room for Metro Staff.
- The 3rd level Parking will include 397 employee and visitor parking spaces.

BUS MAINTENANCE FACILITY

The proposed parking structure will be flanked by two administrative uses, on the west end immediately north of the Vignes Street/Cesar E. Chavez Avenue intersection, by the two-story administration/office building, while the maintenance building will be located on the east end of the parking structure. The ground floor of the operations building will include dispatch offices, a kitchen and employee lounges, while the second floor will be comprised primarily of office uses. The ground floor of the maintenance building will include general maintenance uses such as tire bays and repair shops as well as a welding and materials handling area. The second floor will include maintenance and transportation offices, a training room and other office-related uses.

BAUCHET PARKING STRUCTURE

A three-story parking structure has been constructed at the northern portion of the project site. This structure contains 427 parking spaces. The structure will provide approximately 50 employee parking spaces for the Bauchet Street Storage and Facilities' Maintenance Structure and replace the Central Maintenance Facility (CMF) Lot A surface parking lot that has been removed as part of the project. Access to this structure is provided via an entrance located on Macy Street, east of Bauchet Street. Additional egress only will be provided via an egress road located on CMF property that will exit on Cesar Chavez Avenue or Keller Street.

PROJECT SCOPE (Continued)

PROJECT LOCATION

The project site is situated in the industrial area northeast of Downtown Los Angeles.

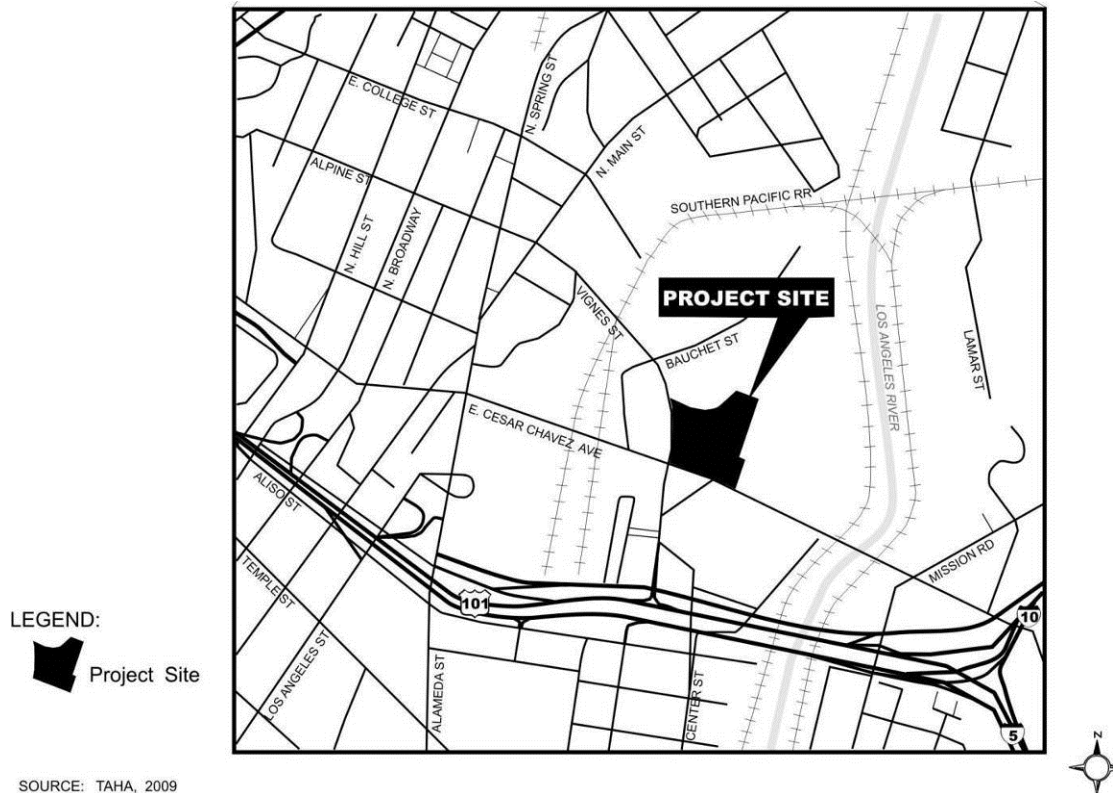


Figure 1 – Location Map

Regional access to the project site is provided by U.S. Highway 101/Interstate 5 (Hollywood Freeway/Santa Ana Freeway), which is less than 0.5 miles south of the project site, and Interstate 10 (San Bernardino Freeway), which is approximately 0.5 miles southeast of the project site.

The project site is located on the northeast corner at the intersection of Vignes St. and Cesar E. Chavez Ave. It is bound by the Twin Towers Correctional Facility and Bauchet Street to the north; Vignes St. to the west; the Metro Support Services Center (MSSC), the Burlington Northern Santa Fe Railroad (BNSF) intermodal yard, and the Los Angeles River to the east and the C. Erwin Piper Technical Center and Cesar E. Chavez Ave. to the south (Figure 1).

KEY MILESTONE SCHEDULE SIX-MONTH LOOKAHEAD

	Milestone Date	Jul-13	Aug-13	Sep-13	Oct-13	Nov-13	Dec-13
Start DWP Utility Service Yard	7/1/13	○					
Start Wash Pit Walls Foundations	7/16/13	○					
Start Retaining Walls at Metro Driveway	7/22/13	○					
Start Slab on Grade - Building A	7/29/13	○					
Start Foundation of Building F	8/14/13		○				
Complete Off-Site Utilities (Excludes Undergrounding DWP Electrical Poles along Cesar Chavez)	8/12/2013*		○				
Start Removal of Lyon Street	8/16/2013		○				
Complete Radiator Shop Relocation	8/16/2013		○				
Start Walls and Columns for Building C Level 1	6/13/2013		○				
Complete Demolition and Removal of contaminated Soil	8/30/2013*		○				
Complete Site Preparation	9/9/2013*			○			
Start Demolition of Building 1	09/30/13			○			
Complete Foundation of Building B	10/01/13				○		
Complete Foundation of Building C	10/30/13				○		
Complete Lower Level walls and Columns	11/19/13					○	
Start Deck Pour for Building B Level 1	12/12/13						○
Complete Slab on grade for Building A and B	12/17/13						○
Start Walls and Columns for Building B Level 1	12/30/13						○



Metro Milestone



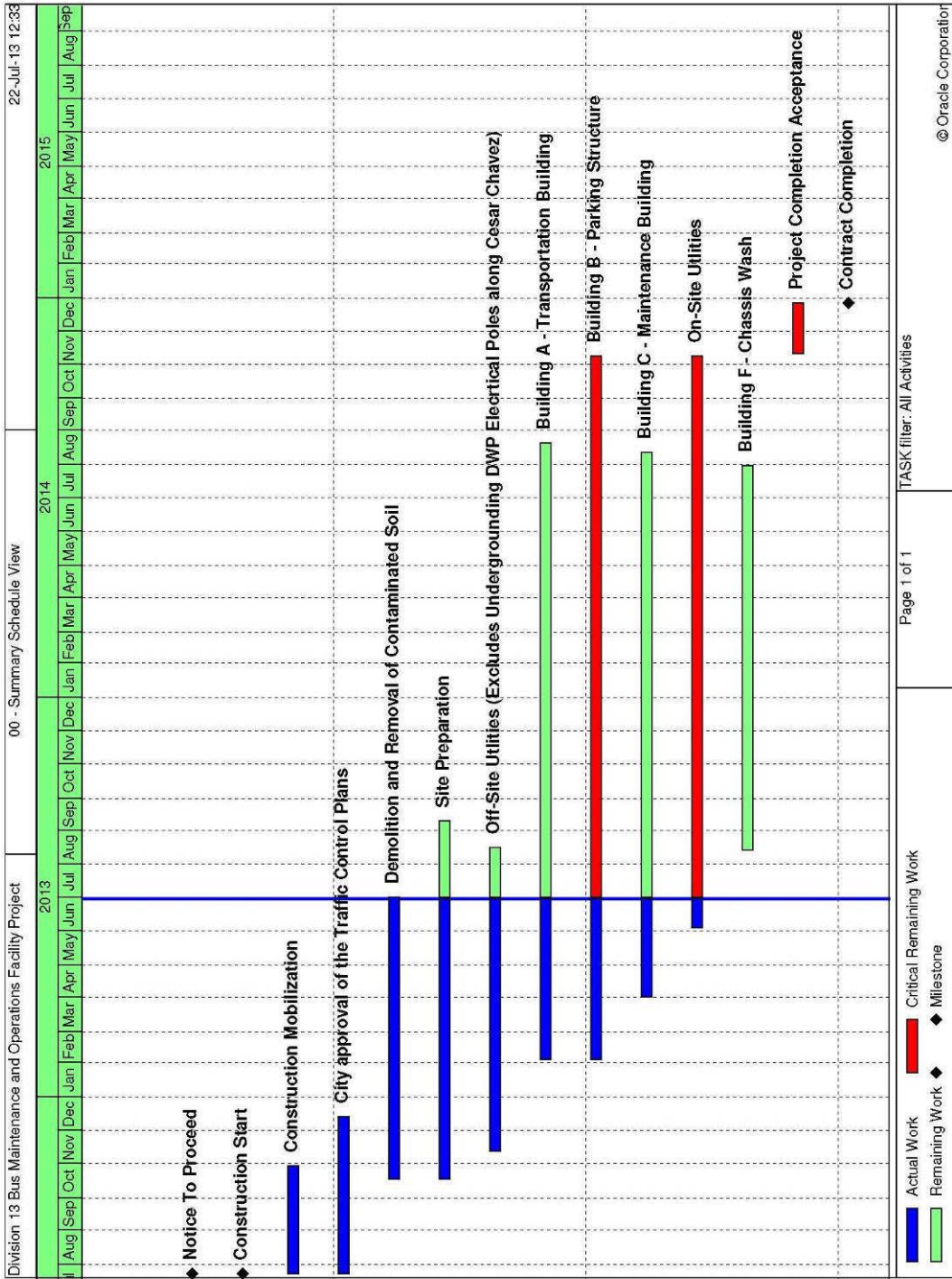
Contractor



Third Parties Approval

* New Date

PROJECT SUMMARY SCHEDULE



CRITICAL PATH NARRATIVE

Based on the current summary schedule, the primary critical path runs through On-Site Utilities, Building B – Parking Structure, and Project Completion and Acceptance.

PROJECT COST STATUS

DIVISION 13
 FEDERAL PROJECT # CA-04-0190-00, PROJECT 202001
 ENGINEERING CAPITAL IMPROVEMENT PROJECTS DIVISION
 METRO TRANSIT PROJECT DELIVERY DEPARTMENT
 COMBINED COST REPORT BY ELEMENT
 PERIOD ENDING: JUNE 2013

DOLLARS

ELEMENT CODE	ELEMENT DESCRIPTION	ORIGINAL BUDGET	CURRENT BUDGET		COMMITMENTS		EXPENDITURES		CURRENT FORECAST		BUDGET / FORECAST VARIANCE
			PERIOD	TO DATE	PERIOD	TO DATE	PERIOD	TO DATE	PERIOD	TO DATE	
C	CONSTRUCTION	76,447,000	853,000	77,300,000	309,000	68,834,000	5,367,000	18,496,000	166,000	77,300,000	-
S	SPECIAL CONDITIONS	-	301,000	2,901,000	67,000	1,730,000	96,000	679,000	2,554,000	5,455,000	(2,554,000)
R	RIGHT-OF-WAY	-	-	-	-	-	-	-	-	-	-
P	PROFESSIONAL SERVICES	13,425,000	3,672,000	19,625,000	666,000	14,241,000	1,090,000	12,557,000	480,000	19,625,000	-
PC	PROJECT CONTINGENCY	5,128,000	4,374,000	4,374,000	-	-	-	-	(3,200,000)	1,820,000	2,554,000
TOTAL PROJECT		95,000,000	9,200,000	104,200,000	1,042,000	84,805,000	6,553,000	31,732,000	-	104,200,000	-

NOTE: EXPENDITURES ARE CUMULATIVE THROUGH June 30, 2013

PROJECT COST ANALYSIS

Original and Current Budget

In April 2013, the Metro Board increased the Project 202001 Life of Project Budget (LOP) by \$9,200,000 from \$95,000,000 to \$104,200,000. The Current LOP brings the Current Budget in line with the overall Current Forecast. The original LOP of \$95,000,000 was established in September 2008.

Current Forecast

The overall Current Forecast remains unchanged from the previous quarter. Specific components, however, did change to reflect the LOP increase made in April 2013, and the re-allocation of a portion of the contingency to Special Conditions. The increase in the Special Conditions budget is due to the Metro Board's direction last quarter to move all overhead utilities underground. The increase is based on a cost estimate provided by the Los Angeles Department of Water and Power (LADWP) to move high voltage power underground; a cost estimate to move low voltage utilities underground; a Buy America allowance related to moving high voltage and low voltage utilities underground; the relocation of fiber optic cable by AT&T; and checks issued to the City of Los Angeles for permits.

A Project Budget Change Request will be prepared and processed through the Project to reconcile the present Forecast in conjunction with the trending program.

Commitments

Commitments at the end of June were \$84.8 million. The commitments increased this period by \$1.0 million to reflect the addition of FY13 funding to the construction management consultant contracts; task orders issued for archeological and paleontological monitoring; the

PROJECT COST ANALYSIS (Continued)

period; and payments to the City of Los Angeles under the established Master Cooperative Agreements, and payments to the Los Angeles Department of Water and Power (LADWP) for permits.

Expenditures

Expenditures are cumulative through June 30, 2013. Expenditures increased \$6.55 million this reporting period primarily due to work performed by the construction contractor. The \$67,000 spent this period on Special Conditions related primarily to the Master Cooperative Agreements with the City of Los Angeles, but also included payments to the Los Angeles Department of Water and Power (LADWP) for permits. The \$1.09 million spent this period on professional services was for costs associated with in-house project administration, construction support by the design consultant, and the construction management consultants.

FINANCIAL/GRANT STATUS

JUNE 2013

STATUS OF FUNDS BY SOURCE

\$ in millions

SOURCE	(A)	(B)	(C)	(D)	(D/B)	(E)	(E/B)	(F)	(F/B)
	ORIGINAL BUDGET	TOTAL FUNDS ANTICIPATED	TOTAL FUNDS AVAILABLE	COMMITMENTS \$	%	EXPENDITURES \$	%	BILLED to FUNDING SOURCE \$	%
STATE PROP 1B - PTMISEA*	85.0	36.6	31.0	31.6	86%	20.0	55%	18.7	51%
TDA ARTICLE 4	10.0	14.3	0.0	0.0	0%	0.0	0%	0.0	0%
FEDERAL - 5309	0.0	47.8	47.8	47.8	100%	11.7	25%	11.7	25%
FEDERAL - 5308	0.0	5.5	5.5	5.0	92%	0.0		0.0	
TOTAL	95.0	104.2	84.3	84.4	81.4%	31.7	30.5%	30.4	29%

* PTMISEA: Public Transportation Modernization and Improvement Surface Enhancement Account

NOTE: Expenditures are cumulative through June 2013.

STATUS OF FUNDS ANTICIPATED

STATE PROP 1B PTMISEA: State Proposition 1B Bond sales provided \$31M to the project and the funds are available for drawdown. The balance of \$5.6M will be requested at a later date.

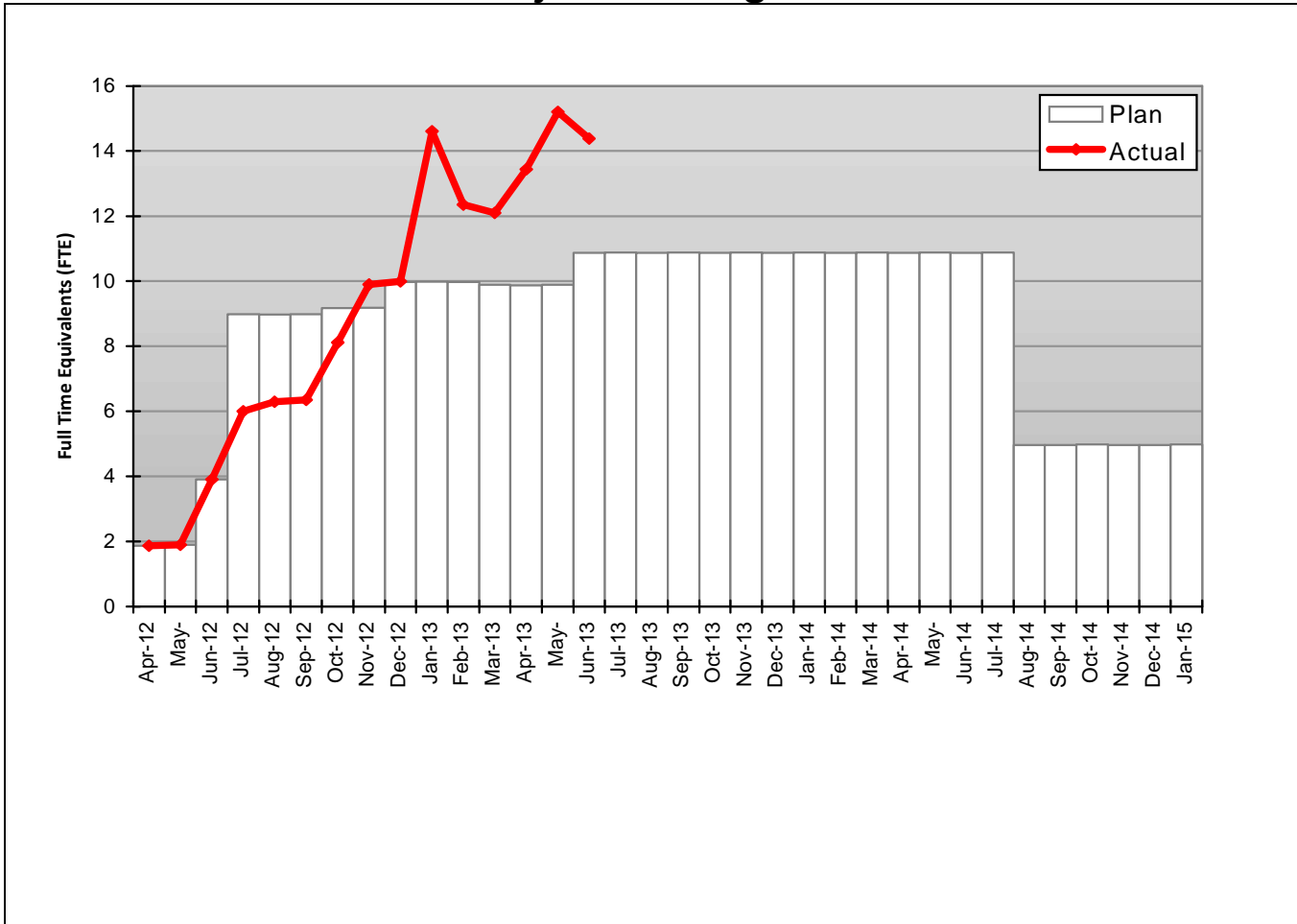
TDA ARTICLE 4: The Metro Board approved the allocation of \$5.1 million to the project. FY14 Budget does not include the allocation of TDA Article 4 Funds.

FEDERAL 5309: \$47.8M under FTA grant CA-04-0190 is available for drawdown for the construction of Division 13 Bus Operations and Maintenance Facility.

FEDERAL 5308: \$5.5M under FTA grant CA-58-0006 is available for drawdown for the construction of Division 13 CNG Fueling Facility.

STAFFING STATUS

Total Project Staffing - FTEs



Total Project Staffing

The Project Staffing Plan is based on the overall Project Duration and is a composite of MTA Agency and Consulting staff.

ENVIRONMENTAL STATUS

Environmental Status since issuance of the FTA NEPA Categorical Exclusion:

- A NEPA CE was granted by the FTA on December 18, 2009.
- Lyon Street was vacated on November 18, 2009.
- A street tree removal permit was granted from the City of LA on May 19, 2011.

The following IS/MND mitigation measures have been addressed and included in the Specification and/or Design drawings: AE 1, AE 2 (LEED requirements), CR4, N1, N2, N4, GS 1, HM 1

The following construction mitigation measures are being implemented as required: They are continually renewed and adjusted per changing site conditions: AQ1, AQ 2, AQ3, AQ4, CR1, CR2, CR3, CR4, CR5, CR6, HM1, HM2, HM3, N1, N2, N3, N4

- Regarding mitigation measures CR1 – CR6, Archaeological and Paleontology monitoring have been occurring since project excavation began. To date, 15 features have been uncovered and will be evaluated against Section 106 requirements. One feature, a human bone was discovered and the LA County Coroner was notified. Consultation then ensued between the Native American Most Likely Descendent (MLD), Federal Transit Administration, State Historic Preservation Officer and Metro. Consultation and the resulting process are documented in a letter to SHPO dated May 20, 2013. Native American monitoring is also continuing per agreement with the MLD, and carbon dating of the human remains is underway. As excavation closes, we will be moving to researching, culling and curating of artifacts uncovered.

QUALITY ASSURANCE STATUS

C0974 Division 13 Maintenance & Operations Facility

- Reviewed Change Technical Evaluation for CN 00047 Sanitary Sewer Manhole Unforeseen Obstructions.
- Assisted Contractor with testing of potential soil import fill from Metro Orange Line Extension and I-405 HOV Projects.
- Attended weekly coordination meetings.

SAFETY AND SECURITY STATUS

- The contractor experienced no recordable injuries during the quarter from April to June 2013.
- Safety Staff participated in pre-activity (readiness review) meetings to ensure compliance with approved Work Plans and contract specifications.
- Monitoring construction activities during day shifts to ensure contractor compliance with contract specifications.
- Safety staff attended weekly Progress Meetings, Foreman's Weekly Safety Meetings and other project meetings to evaluate Contractors Safety Program compliance with contract requirements.
- April - June 2013 Contractor Work Hours (Design & Construction): 25,720
- Contractor – Project to Date Work Hours (Design & Construction): 54,882
- Total Project to Date Work Hours (Contractor & Metro Staff): 54,882
- Project to Date Recordable Injury Rate: 0.0 (Zero Recordable Injuries) (each rate is per 200,000 work hours)
- Project to Date Total Time Away Injury Rate: 0.0 (Zero Time Away From Work Injuries)
- Project to Date Total Days Away Rate: 0.0 (Zero Days Away From Work)

THIRD PARTY AGREEMENT STATUS

Third Party	Type of Agreement	Forecast Execution Date	Required Need Date	Status/ Comments
City of Los Angeles	Master Cooperative Agreement	Completed	N/A	Executed
LADWP Power	Utility Cooperative Agreement	Completed	N/A	Executed
LADWP Water	Utility Cooperative Agreement	Completed	N/A	Executed
Verizon	Utility Cooperative Agreement	Completed	N/A	Executed
AT&T	Utility Cooperative Agreement	Completed	N/A	Executed
Southern California Gas Company	Utility Cooperative Agreement	Completed	N/A	Executed

CONTRACT STATUS

<p>Metro Division 13 Bus Maintenance and Operations Facility Project Contractor: McCarthy</p>	<p>Contract No.: C0974 Status as of: June 28, 2013</p>																															
<p>Progress/Work Completed: Major work started/completed this period:</p> <ul style="list-style-type: none"> • Contractor has completed the second phase of the storm drain lines at Vignes Street. • Completed Phase 1 lower walls and columns and installation of water proofing at the Transportation and Parking Garage Buildings. • Completed Phase 2 foundation No. 6 and lower level walls 2 thru 4 at the Maintenance Building. • Contractor started waterproofing the exterior walls and drainage system. • Contractor started with slot cutting for removal and recompaction of soils on the west side adjacent to the existing Building 1. • Contractor continues with offsite operations on Vignes Street for underground utility installation of sanitary sewer, storm drain piping and manholes. • Continued removal of Gas Company hazardous soils. <p>Areas of Concern:</p> <ul style="list-style-type: none"> • Unforeseen obstructions encountered during the excavation for sanitary sewer manholes at the intersection of Cesar Chavez Avenue and Vignes St. has affected the completion of this work and may affect the schedule. • Archaeological find during the excavation for the storm drain piping at Vignes St, has affected the progress and completion of the storm drain line. • Over-excavation and shoring at west side of existing building 1 due to requirements to excavate to a depth of 7 ft. or greater below grade. • Shoring of existing footing for cafeteria building to allow construction of new wall along grid line 12 of new maintenance building. • Undergrounding of electrical power and low voltage lines at Cesar Chavez Ave. • Removal of additional quantities of hazardous soils and unforeseen concrete encountered in the hazardous soils is an area of concern between Metro and SC Gas Co. • Various unforeseen underground concrete structures and buried pipe have impacted the progress of work. 	<p>Major Activities (In Progress):</p> <ul style="list-style-type: none"> • Mass grading and excavation on the east side of Lyon St. • Concrete foundations for Transportation, and Parking Garage and Maintenance buildings. • Underground utility installation of sanitary sewer and storm drain on Vignes Street. • Underground utility installation of water, storm drain and sanitary sewer on Metro Drive. • Plumbing, electrical and equipment layout of the new radiator shop at the existing Building 1. <p>Major Activities Next Period:</p> <ul style="list-style-type: none"> • Installation of fiber optic duct bank and precast pull vaults on Vignes St. and Metro Drive. • Final connection of new underground utilities: water, sanitary sewer and storm drain. • Start of the new radiator shop at Building 1 of Metro's Central Maintenance Facility. • Concrete slab-on-grade at Transportation and Parking Garage buildings. • Lower level concrete walls and columns for Transportation and Parking Garage buildings. • Undergrounding of electrical power lines on Cesar Chavez Ave. • Demo of existing utilities and excavation of materials along on site Lyon Street. 																															
		Original Baseline	Time Extension	Current Contract	Forecast Completion	Variance Cur-Fcast																										
	Commencement	07/23/12	0	07/23/12	07/23/12	0																										
	Completion	06/23/14	14	07/07/14	10/03/14	-88																										
	Punchlist Complete	06/23/14	14	07/07/14	10/03/14	-88																										
	Final Acceptance	06/23/14	14	07/07/14	10/03/14	-88																										
<p>Schedule Summary:</p> <table border="0" style="width: 100%;"> <tr> <td style="width: 80%;">Notice of Award</td> <td style="text-align: right;">05/24/12</td> </tr> <tr> <td>Notice to Proceed</td> <td style="text-align: right;">07/23/12</td> </tr> <tr> <td>Original Contract Duration (CD*)</td> <td style="text-align: right;">700</td> </tr> <tr> <td>Approved Time Extensions (CD*)</td> <td style="text-align: right;">7</td> </tr> <tr> <td>Current Contract Duration (CD*)</td> <td style="text-align: right;">707</td> </tr> <tr> <td>Elapsed Time from NTP (CD*)</td> <td style="text-align: right;">342</td> </tr> <tr> <td>Contract Elapsed Time Percent</td> <td style="text-align: right;">48.0%</td> </tr> </table>	Notice of Award	05/24/12	Notice to Proceed	07/23/12	Original Contract Duration (CD*)	700	Approved Time Extensions (CD*)	7	Current Contract Duration (CD*)	707	Elapsed Time from NTP (CD*)	342	Contract Elapsed Time Percent	48.0%	<p>Cost Summary: \$ In 000's</p> <table border="0" style="width: 100%;"> <tr> <td style="width: 80%;">1. Award Value:</td> <td style="text-align: right;">73,364</td> </tr> <tr> <td>2. Executed Modifications:</td> <td style="text-align: right;">25</td> </tr> <tr> <td>3. Approved Change Orders:</td> <td style="text-align: right;">0</td> </tr> <tr> <td>4. Current Contract Value (1 + 2 + 3):</td> <td style="text-align: right;">74,417</td> </tr> <tr> <td>5. Incurred Cost:</td> <td style="text-align: right;">16,368</td> </tr> <tr> <td>6. Percent Incurred Cost:</td> <td style="text-align: right;">22.0%</td> </tr> </table>						1. Award Value:	73,364	2. Executed Modifications:	25	3. Approved Change Orders:	0	4. Current Contract Value (1 + 2 + 3):	74,417	5. Incurred Cost:	16,368	6. Percent Incurred Cost:	22.0%
Notice of Award	05/24/12																															
Notice to Proceed	07/23/12																															
Original Contract Duration (CD*)	700																															
Approved Time Extensions (CD*)	7																															
Current Contract Duration (CD*)	707																															
Elapsed Time from NTP (CD*)	342																															
Contract Elapsed Time Percent	48.0%																															
1. Award Value:	73,364																															
2. Executed Modifications:	25																															
3. Approved Change Orders:	0																															
4. Current Contract Value (1 + 2 + 3):	74,417																															
5. Incurred Cost:	16,368																															
6. Percent Incurred Cost:	22.0%																															

CONSTRUCTION PHOTOGRAPHS



Formwork removal at Transportation Bldg.



Earthwork at east side of Lyon Street.



Earthwork at east side of Lyon Street.



Removal of concrete obstructions.

CONSTRUCTION PHOTOGRAPHS



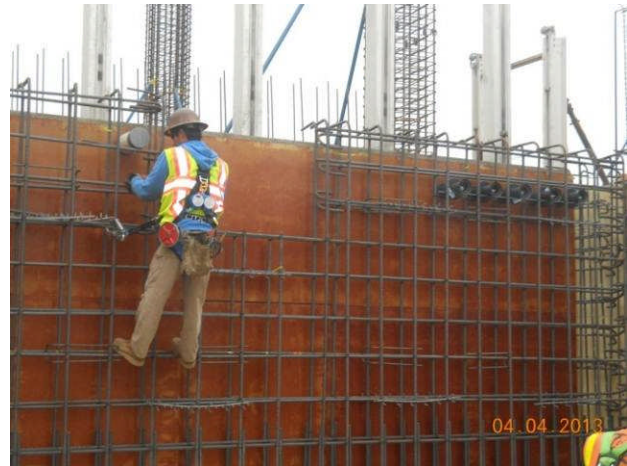
Excavation for water meters by LADWP.



Removal of underground concrete obstructions.



Removal of underground concrete obstructions.



Concrete reinforcement installation.

CONSTRUCTION PHOTOGRAPHS



Concrete reinforcement installation.



Removal of SC Gas Company hazardous soils.



Foundation reinforcement at Admin. Building.



Excavation adjacent to Diamond Bldg.

CONSTRUCTION PHOTOGRAPHS



Reinforcement at Maintenance Bldg.



Foundations and columns at Maintenance Bldg.



Excavation adjacent to Diamond Bldg.



Excavation adjacent to Diamond Bldg.

CONSTRUCTION PHOTOGRAPHS



Foundation reinforcement at Parking Garage.



Foundation excavation at Parking Garage.



Excavation at adjacent to Diamond Building.

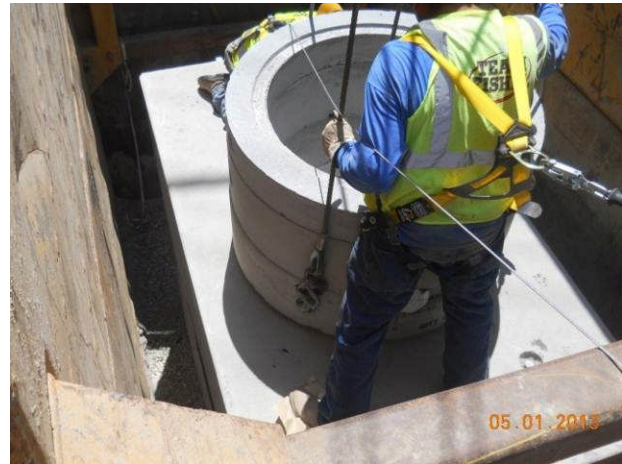


Foundation reinforcement at Parking Garage.

CONSTRUCTION PHOTOGRAPHS



Vault installation for fiber optic system.



Fiber optic vault installation on Vignes Street.



Excavation adjacent to Diamond Bldg.



Fiber optic vault installation at Vignes Street.

CONSTRUCTION PHOTOGRAPHS



Fiber optic system on Vignes Street.



Removal of SC Gas hazardous soils.



Column formwork at Parking Garage Building.



Column formwork at parking Garage Building.

CONSTRUCTION PHOTOGRAPHS



Removal of SC gas hazardous soils.



Concrete placement at Parking Garage walls.



Concrete placement at Parking Garage walls.



Removal of SC gas hazardous soils.

CONSTRUCTION PHOTOGRAPHS



Reinforcement at walls of Parking Garage.



Lower level wall formwork at Parking Garage.



Wall reinforcement at Maintenance Building.



Slot cutting adjacent to existing Building 1.

CONSTRUCTION PHOTOGRAPHS



Waterproofing of exterior walls.



Under slab plumbing rough-in work.



Wall formwork at lower level Parking Garage.



Fiber optic trenching at Vignes Street.

CONSTRUCTION PHOTOGRAPHS



Water proofing of exterior walls.



Removal of existing concrete obstructions.



Wall formwork at lower level Parking Garage.



Water proofing of exterior walls.

CONSTRUCTION PHOTOGRAPHS



Water proofing and drainage at walls.



Water proofing and drainage at walls.



Wall formwork and reinforcement.



Screening of soils for rocks and debris.

CONSTRUCTION PHOTOGRAPHS



Import of structural fill.



Connection of landscape irrigation line.



Radiator shop plumbing work.



Underground oil interceptor installation.

CONSTRUCTION PHOTOGRAPHS



Underground oil interceptor installation



Underground oil interceptor installation.



Compaction of earthwork at Building 1.



Concrete formwork at Administration Building.

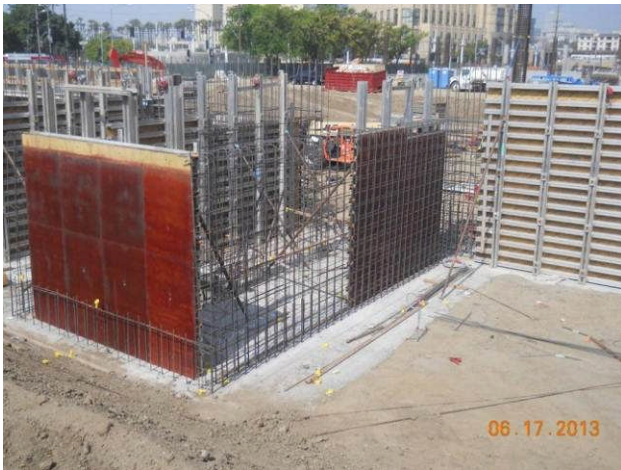
CONSTRUCTION PHOTOGRAPHS



Underground electrical rough-in.



Drainage system at building walls.



Concrete wall formwork and reinforcement.



Concrete wall formwork and reinforcement.

CONSTRUCTION PHOTOGRAPHS



Connection of underground storm drain line.



Screening of imported soil for rocks and debris.

CHRONOLOGY OF EVENTS

December 2, 2011	Project put on hold by Metro Management.
April 3, 2012	Project hold released by Metro Management.
May 15, 2012	Award Notice issued to successful bidder.
May 24, 2012	Contract awarded to McCarthy Building Companies.
May 24, 2012	Limited Notice to Proceed issued to contractor for non-construction, non-craft labor work.
July 23, 2012	Notice to Proceed issued to Contractor.
December 3, 2012	The City of Los Angeles (Department of Transportation) approved temporary Traffic Control Plans.
December 18, 2012	Start of hazardous soil removal.
December 18, 2012	Start City utilities at Vignes Street.
January 8, 2013	Mass grading, over-excavation and recompaction at Transportation and Parking Structure.
January 31, 2013	Mass grading, over-excavation and recompaction at Maintenance Building.
February 6, 2013	Start layout for foundations at Transportation and Parking Garage buildings.
February 28, 2013	Start concrete placement for foundations at Transportation and Parking Structure.
March 12, 2013	Start lower level shear and retaining walls reinforcement at Transportation and Parking Structure.
March 26, 2013	Discover fossilized human bone at Vignes Street.

CHRONOLOGY OF EVENTS (Continued)

December 2, 2011	Project put on hold by Metro Management.
April 3, 2012	Project hold released by Metro Management.
May 15, 2012	Award Notice issued to successful bidder.
May 24, 2012	Contract awarded to McCarthy Building Companies.
May 24, 2012	Limited Notice to Proceed issued to contractor for non-construction, non-craft labor work.
July 23, 2012	Notice to Proceed issued to Contractor.
December 3, 2012	The City of Los Angeles (Department of Transportation) approved temporary Traffic Control Plans.
December 18, 2012	Start of hazardous soil removal.
December 18, 2012	Start City utilities at Vignes Street.
January 8, 2013	Mass grading, over-excavation and recompaction at Transportation and Parking Structure.
January 31, 2013	Mass grading, over-excavation and recompaction at Maintenance Building.
February 6, 2013	Start layout for foundations at Transportation and Parking Garage buildings.
February 28, 2013	Start concrete placement for foundations at Transportation and Parking Structure.
March 12, 2013	Start lower level shear and retaining walls reinforcement at Transportation and Parking Structure.
March 26, 2013	Discover fossilized human bone at Vignes Street.
April 18, 2013	Start excavation and layout foundations at maintenance building.
April 24, 2013	Start footing reinforcement at Maintenance Building.
April 25, 2013	Complete installation of Shoring Piles and Shoring at Diamond Building.

CHRONOLOGY OF EVENTS (Continued)

April 25, 2013	Complete excavation of foundations at Building C.
April 30, 2013	Start footing concrete placement at Maintenance Building.
May 13, 2013	Start on-site utilities at Transportation Building.
May 15, 2013	Start installation of below grade waterproofing.
May 23, 2013	Complete slot cutting at west side of Building 1.
June 12, 2013	Approval of Cesar Chavez Traffic Plans.

APPENDICES

COST AND BUDGET TERMINOLOGY

ADOPTED BUDGET: The Approved Project Budget as established by Metro Board of Directors at the time it authorizes Construction Project Management Division to commence full design and construction of the project (Project Adoption).

CURRENT FORECAST: Evaluation of costs to go combined with actual expenditures.

COMMITMENTS: The total of actual contract awards, executed change orders or amendments, approved work orders of Master Cooperative Agreements, offers accepted for purchase of real estate, and other Metro actions which have been spent or result in the obligation of specific expenditures at a future time. Also includes commitments reported by other agencies.

EXPENDITURES: The total dollar amount of funds expended by Metro for contractor or consultant invoices, third party invoices, staff salaries, real estate and other expenses that is reported in Metro's Financial Information System (FIS and expenditures reported by other agencies).

APPENDIX LIST OF ACRONYMS

AFC	Approved For Construction
BNSF	Burlington Northern Santa Fe Railway
CADD	Computer Aided Drafting and Design
CCTV	Closed Circuit Television
CD	Calendar Day
CM	Construction Manager
CMAC	Congestion Mitigation Air Quality
CMIA	Cash Management Improvement Act
CN	Change Notice
CNG	Certified Natural Gas
CO	Change Order
CPM	Critical Path Method
CPUC	California Public Utilities Commission
CR	Camera Ready
CO	Change Order
CTC	California Transportation Commission
D-B	Design-Build
D-B-B	Design-Bid-Build
DBOM	Design, Build, Operate and Maintain
DD	Design Development
DEIR	Draft Environmental Impact Report
DWP	Department of Water and Power
EA	Environmental Assessment
EIR	Environmental Impact Report
EIS	Environmental Impact Statement
FD	Final Design
FEIR	Final Environmental Impact Report
FHWA	Federal Highway Administration
FIS	Financial Information System
FOCT	Fiber Optics Cable Transmission System
FTE	Full Time Equivalent
IFB	Invitation for Bid
IPO	Integrated Project Office
LA	Los Angeles
LFAT	Local Field Acceptance Test
LNTF	Limited Notice To Proceed
LONP	Letter Of No Prejudice
LOP	Life of Project
MCA	Master Cooperative Agreement
METRO	Los Angeles County Metropolitan Transportation Authority

APPENDIX
LIST OF ACRONYMS (Continued)

MIS	Major Investment Study
MOT	Maintenance of Traffic
MOU	Memorandum of Understanding
MSSC	Metro Support Services Center
N/A	Not Applicable
NOA	Notice of Award
NTE	Not to Exceed
NTP	Notice To Proceed
O & M	Operations and Maintenance
PC	Project Control
PE	Preliminary Engineering
PIP	Project Implementation Plan
PLA	Project Labor Agreement
PM	Project Manager
PMA	Project Management Assistance
PMP	Project Management Plan
P&P	Policies & Procedures
PR	Project Report
PS&E	Plans, Specs & Engineering
PSR	Project Study Report
QA	Quality Assurance
QAR	Quality Assurance Report
QC	Quality Control
QPSR	Quarterly Project Status Report
RFC	Request For Change or Released for Construction (based on context)
RFP	Request For Proposal
ROM	Rough Order of Magnitude
ROW	Right-Of-Way
RSTP	Regional Surface Transportation Program
RWQCB	Regional Water Quality Control Board
SAFETEA-LU	Safe, Accountable, Flexible, Efficient Transportation Equity Act: A Legacy for Users
SCE	Southern California Edison
SD	Storm Drain
SIT	System Integration Testing
SOW	Statement Of Work
SP	Special Provision
TBD	To Be Determined
UPS	Uninterrupted Power Supply
USDOT	United States Department of Transportation
VE	Value Engineering
WBS	Work Breakdown Structure
WP	Work Package