

# Welcome!

**Rail to Rail (Segment A) Construction Update Meeting**  
July 10, 2024



We're creating connections for walking and biking in South LA.

RAIL TO RAIL ACTIVE TRANSPORTATION CORRIDOR PROJECT



# Housekeeping

Today's meeting is being recorded.  
The recording and PDF will be posted on metro.net.



Attendee cameras are off and microphones are muted.



During the meeting, questions can be submitted using the Q&A icon.

# Code of Conduct

**Metro is committed to ensuring that all participants can fairly and clearly share ideas, comments and concerns about this project. To provide a safe and equitable process, we are asking for your help.**

**During this meeting, please:**

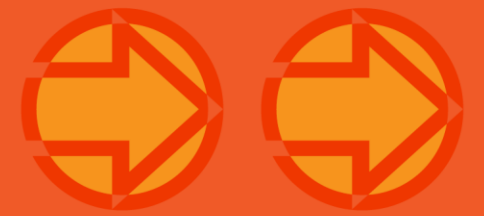
- > Respect the format of the meeting and allow everyone an opportunity to comment

# Metro's three priorities for addressing public safety



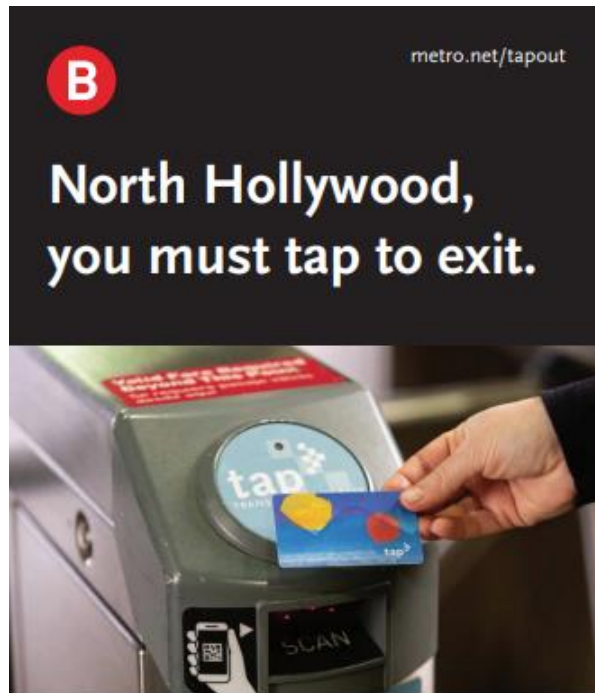
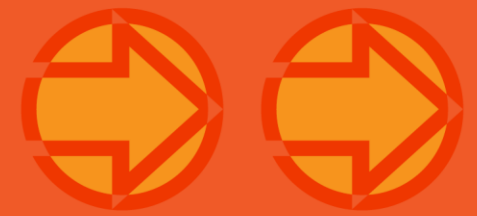
1. Increase the visible presence of uniformed personnel
2. Enhance access control
3. Strengthen partnerships to address societal issues

# Increasing our visible presence



- Metro has begun surging presence of Metro Transit Security and Metro Ambassadors by 20%.
  - Increased teams riding on buses and trains
  - Increased issue reporting
  - Increased fare and code of conduct enforcement
- Contracted law enforcement partners have now begun to expand their visible presence.

# Station Access Control



Starting **May 28, 2024**, turnstiles will not open unless you tap your valid TAP card when you enter **and exit** North Hollywood Station.

Learn more at [metro.net/tapout](https://metro.net/tapout).

The system is safer when everyone on it is there for its intended purpose: transit.

Metro is:

- > Increasing fare enforcement through the surge of TSOs on the system.
- > Launching a pilot program at the North Hollywood B Line station fare gates to see if requiring people to tap OUT would help confirm that a valid fare was paid, improving fare compliance.
- > Right-sizing stations through interventions that improve lighting and control access to space.
- > Evaluating possible fare gate improvements.

**THANK YOU**

# Agenda




- > Introductions
- > Project Overview
- > Upcoming Milestones
- > Questions

# Project Team

- > Construction Relations
  - Brett Roberts, Community Relations Manager
  - Perla Berry, Principal Community Relations Officer
- > Metro Construction
  - Raul Pedroza, Project Manager
- > Contractor
  - Matt Arroyo, Project Manager, Griffith Construction
- > New Media Team
  - Katrice Candler, Principal Community Relations Officer
  - Kimberly Sanchez, Transit Associate



-  Metro Rail Lines & Stations  
**A E K**
-  Metro Busway & Stations  
**J**
-  Amtrak/Metrolink

- Rail to Rail/River Active Transportation Corridor Project**
-  Metro-owned Rail Right-of-Way within project limits
  -  Segment A (funded)
  -  Segment B Alternative - Randolph St

Subject to Change

23-1995 © 2022 LACMTA



# Project Renderings



Hyde Park from 4th Ave-Looking Southwest



Bike/Pedestrian Path-Looking Northwest

# Slauson Av West of Denker Av-Looking Northeast



# Project Schedule

WE  
ARE  
HERE

2022

**May Activity:** Groundbreaking

**June to December Activities:**

Clearing, Demolition, Excavation,  
Landscaping, Paving, Intersection  
Improvement Work

2023

**January to December Activities:**

Clearing, Demolition, Excavation,  
Landscaping, Paving, Intersection  
Improvement Work

2024

**January to December Activities:**

Clearing, Demolition, Excavation, Landscaping,  
Paving, Intersection Improvement Work

**Project Completion/Opening**



# Rail to Rail Project: Work to Date

- > Abandoned rail equipment removed
- > Contaminated soils removed east of Main St and Slauson Av
- > Construction Contract Awarded to Griffith Company
- > Clearing work, demolition, and fence installation ongoing
- > Right of Way excavation complete
- > Intersection Improvement Work Completed
  - 8<sup>th</sup> Av
  - 4<sup>th</sup> Av
  - Paloma Av
  - Towne Av
  - Vermont Av
  - Western Av
  - Hooper Av
  - McKinley Av
  - Budlong Av
  - Broadway
  - Slauson West of Denker
  - Van Ness Av
  - Compton Av
  - Cimarron Av
  - Haas Av
  - Normandie Av
  - Main St
  - Slauson Av near Miramontes Bl
  - 110 SB Off Ramp



Northeast view station from 11<sup>th</sup> Ave

# Project Photos



Main St Intersection Improvement Work completed



Landscaping in Segment B

# Project Photo

Southwest view of Segment A and the Metro K Line



# Current: Hoover St

## Contractor began the intersection improvement work

- > **When:** March 25, 2024
- > **Where:** Hoover and Slauson Av
- > **Duration:** Four months

## Hoover St and Slauson Intersection

- **Hoover Stage 1:** Northbound directional closure of Hoover St at Slauson
- **Hoover Stage 2:** Southbound directional closure of Hoover St at Slauson Av

## Work hours

- > Workdays from Monday to Saturday, 7 am to 3:30 pm
- > The closure will be in place for the duration of the activity



Sub-grading Slauson Av and Hoover St

# Current: Central Av Intersection Improvement

**Contractor began the intersection improvement work**

**When:** March 29, 2024

**Where:** Central Av and Slauson Av

**Duration:** Four and a half months

## Stage 1:

- > Directional closure of northbound Central Av. from Slauson Av to 58th St.

## Stage 2:

- > Directional closure of southbound Central Av. from 58th St. and Slauson Av.

## Work hours

- > Workdays from Monday to Saturday, 7 am to 3:30 pm
- > The closure will be in place for the duration of the activity



Paving, Sidewalk, Ramp

# Current: Denker Av Intersection Improvement

## Contractor began the intersection improvement work

**When:** June 21, 2024

**Where:** Denker Av and Slauson Av

**Duration:** Four months

## What to Expect:

### Stage 1A:

- > Directional closure of northbound Denker Av north of Slauson Av

### Stage 1B:

- > Directional closure of southbound Denker Av north of Slauson Av

### Stage 2:

- > Full closure of Denker Av from Slauson Av to just south of Slauson Av

## Work hours

- > Workdays from Monday to Saturday, 7 am to 3:30 pm,
- > The closure will be in place for the duration of the activity



Removal of asphalt roadway, concrete bus-pad, and curb/gutter

# Current: San Pedro St Intersection Improvement

**When:** June 8, 2024

**Where:** San Pedro St and Slauson Av

**Duration:** Five months

**What to Expect:**

**Stage 1A:**

>Southbound directional closure of San Pedro St north of Slauson Av

**Stage 1B:**

>Southbound directional closure of San Pedro St, north of Slauson Av.

>Southbound San Pedro St from Slauson reduced to one lane south of Slauson Av.

**Stage 2A:**

>Northbound directional closure of San Pedro St at Slauson

**Stage 2B:**

>Northbound directional closure of San Pedro St, north of Slauson Av.

>Northbound San Pedro St south of Slauson reduced to one lane south of Slauson Av.

**Work hours**

- > Workdays from Monday to Saturday, 7 am – 3:30 pm
- > The closure will be in place for the duration of the activity



Street Paving

# Horizon: Avalon Bl Intersection Improvement

**When:** As early as July 20, 2024

**Where:** Avalon and Slauson Av

**Duration:** Five months

## What to Expect:

### Stage 1:

- > Northbound directional closure of Avalon at Slauson Av north of Slauson Av

### Stage 1B:

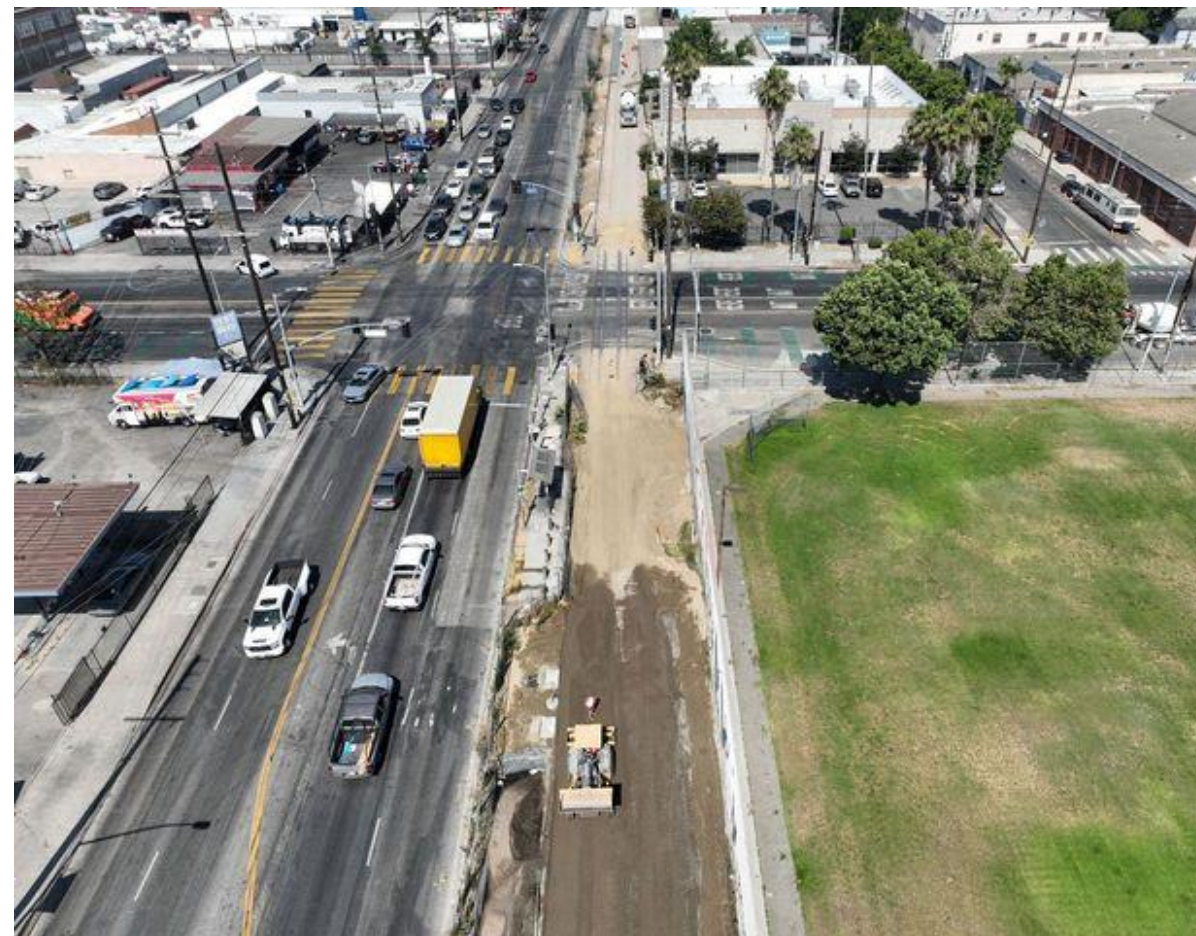
- > Southbound directional closure of Avalon at Slauson Av

### Stage 2:

- > Avalon south of Slauson Av reduced to a lane in each direction

## Work hours

- > Workdays from Monday to Saturday, 7 am – 3:30 pm
- > The closure will be in place for the duration of the activity



# Horizon: Figueroa St Intersection Improvement

**When:** Tentatively early July 27, 2024

**Where:** Figueroa St and Slauson Av

**Duration:** Five months

## **What to Expect:**

### **Stage 1:**

- > Center lanes on Figueroa St north of Slauson Av

### **Stage 2A:**

- > Lane reductions on northbound and southbound Figueroa north of Slauson Av

### **Stage 2B:**

- > Lane reductions on northbound and southbound Figueroa south of Slauson Av

## **Work hours**

- > Workdays from Monday to Saturday, 7 am – 3:30 pm
- > The closure will be in place for the duration of the activity

# Public Outreach & Engagement

## Public Outreach Communication Tools


- Quarterly project update community meetings
- Door-to-Door construction notice distribution
- Project website updates
- Social media updates
- NextDoor updates

## Public Outreach & Engagement Efforts

7 Construction Notices Distributed

5 Briefings w/Local Council Offices

# Stay In Touch

 213.922.9228

 *r2r@metro.net*

 [www.metro.net/r2r](http://www.metro.net/r2r)

Please join us for our next meeting in October 16, 2024 at 6pm

**THANK YOU**