

# Welcome!

Rail to Rail (Segment A) Construction Update Meeting  
July 2023



We're creating connections for walking and biking in South LA.

RAIL TO RAIL ACTIVE TRANSPORTATION CORRIDOR PROJECT





### **New fares are coming to Metro on July 1.**


- Metro is introducing fare capping, a simpler way to pay bus and rail fare.
- Fare capping allows customers to pay per ride with TAP.
- Once a customer reaches their set dollar cap for the day or seven-day period, they're no longer charged when they use their TAP card for the rest of the time period.
- For more information, visit [metro.net/fares](https://metro.net/fares)

# Let's Ride Safely Together

- Keeping riders safe is our number one priority and we're committed to providing you with a great experience on Metro.
- Visit [metro.net/Safety](https://metro.net/Safety) for more information about our plan that reimagines the way we approach public safety, to ensure all our riders feel safe, comfortable, and welcome on our system.



Easy and  
anonymous  
way to connect  
with Metro  
Security  
anytime

A person's hands are holding a smartphone. The screen displays the LA Metro Transit Watch app interface. At the top, there is a large blue square with a white circle in the center containing a black letter 'M'. Below this, the text 'LA Metro Transit Watch' is displayed in a bold, black, sans-serif font. The background of the app is a light blue color with a faint, blurred image of a transit station.

LA Metro  
Transit Watch



## Free transit for students with GoPass!

Students at participating K-12 schools and community colleges ride for free on Metro and other transit agencies.

To find out if your district is participating, contact your school or visit [metro.net/gopass](https://metro.net/gopass).



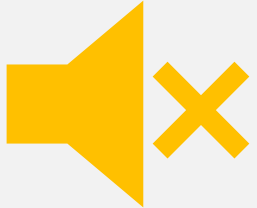
**Metro**

**THANK YOU**

# Housekeeping



This meeting is being recorded. Video file will be posted on our web site at [metro.net/r2r](http://metro.net/r2r)



Public video and mics are disabled. We cannot hear you or see you.



Please ask questions and submit comments via the Q&A feature.



# Agenda

- > Introductions
- > Project Overview
- > Upcoming Milestones
- > Questions

# Project Team

- > Construction Relations
  - Brett Roberts, Community Relations Manager
  - Perla Berry, Principal Community Relations Officer
- > Metro Construction
  - Raul Pedroza, Project Manager
- > Contractor
  - Matt Arroyo, Project Manager, Griffith Construction
- > New Media Team
  - Ginny Brideau, Community Relations Manager
  - Kim Sanchez, Transportation Associate

# Project Map



# Project Schedule



2022

**May Activity:** Groundbreaking

**June to December Activities:**

Clearing, Demolition, Excavation, Landscaping, Paving, Intersection Improvement Work

**Location:** Hyde Park Bl/11th Av to Slauson Av/ Western Av

2023

**January to December Activities:**

Clearing, Demolition, Excavation, Landscaping, Paving, Intersection Improvement Work

**Location:** Slauson Av/Budlong Av to Slauson Av/McKinley Av

2024

**January to December Activities:**

Clearing, Demolition, Excavation, Landscaping, Paving, Intersection Improvement Work

**Location:** Slauson Av/ McKinley Av to Slauson Av/Long Beach Av

**Project Completion/Opening**



ONGOING PUBLIC PARTICIPATION

# Rail to Rail Project: Work to Date

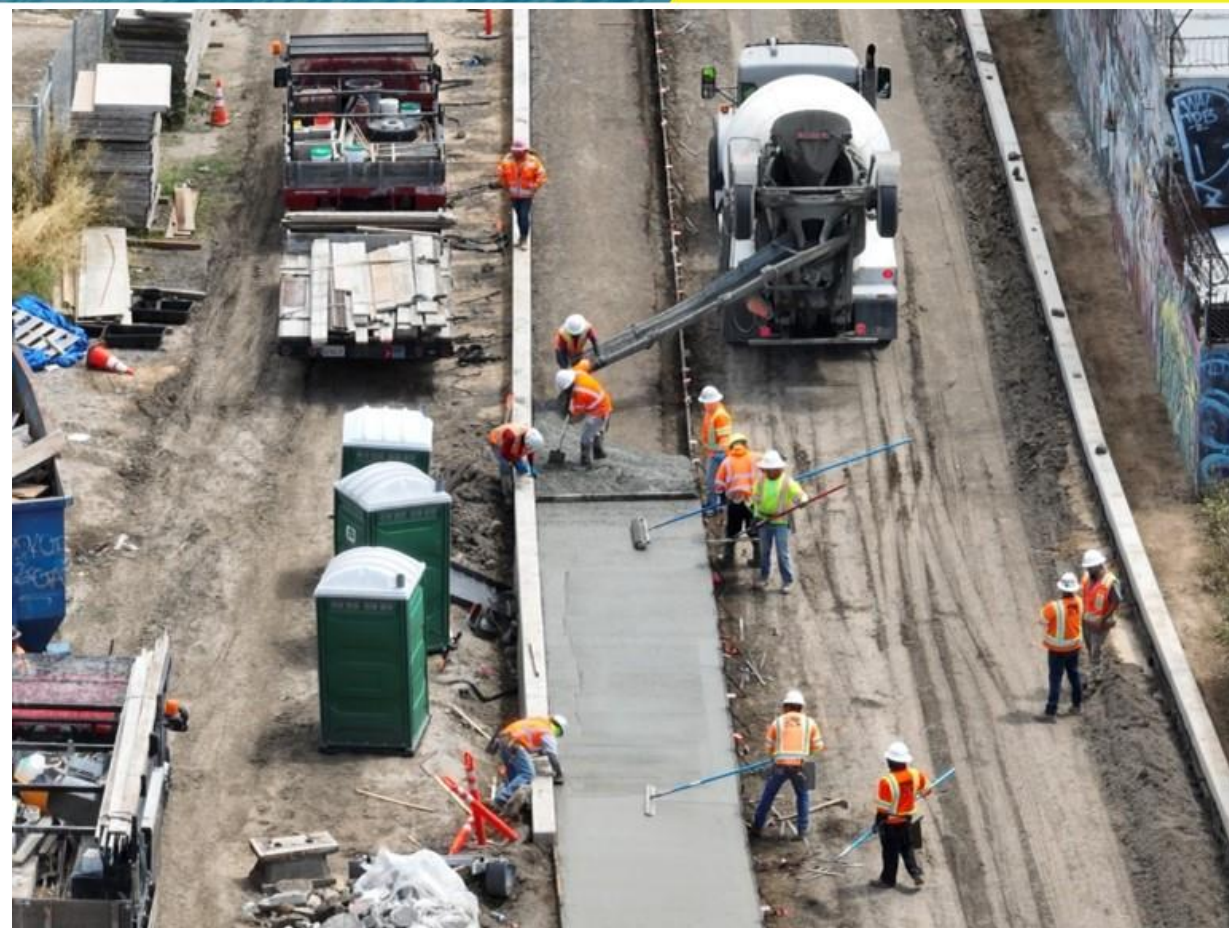
- > Abandoned rail equipment removed
- > Contaminated soils removed east of Main St and Slauson Av
- > Construction Contract Awarded to Griffith Company
- > Clearing work, demolition, and fence installation ongoing
- > Right of Way excavation complete
- > 8th Av Intersection Improvement Work
- > Paloma Av Intersection Improvement Work



# Current Activities



Mixing Zone Diagonal Segment: Bike and Pedestrian Path



Pedestrian Walkway Concrete Placement 4th Av to Van Ness Av



# Current: Western Av Intersection Improvement

## Contractor begun the intersection improvement work

- > **When:** March 31, 2023
- > **Where:** Western Av between Slauson Av and 62nd St.
- > **Duration:** approximately seven months

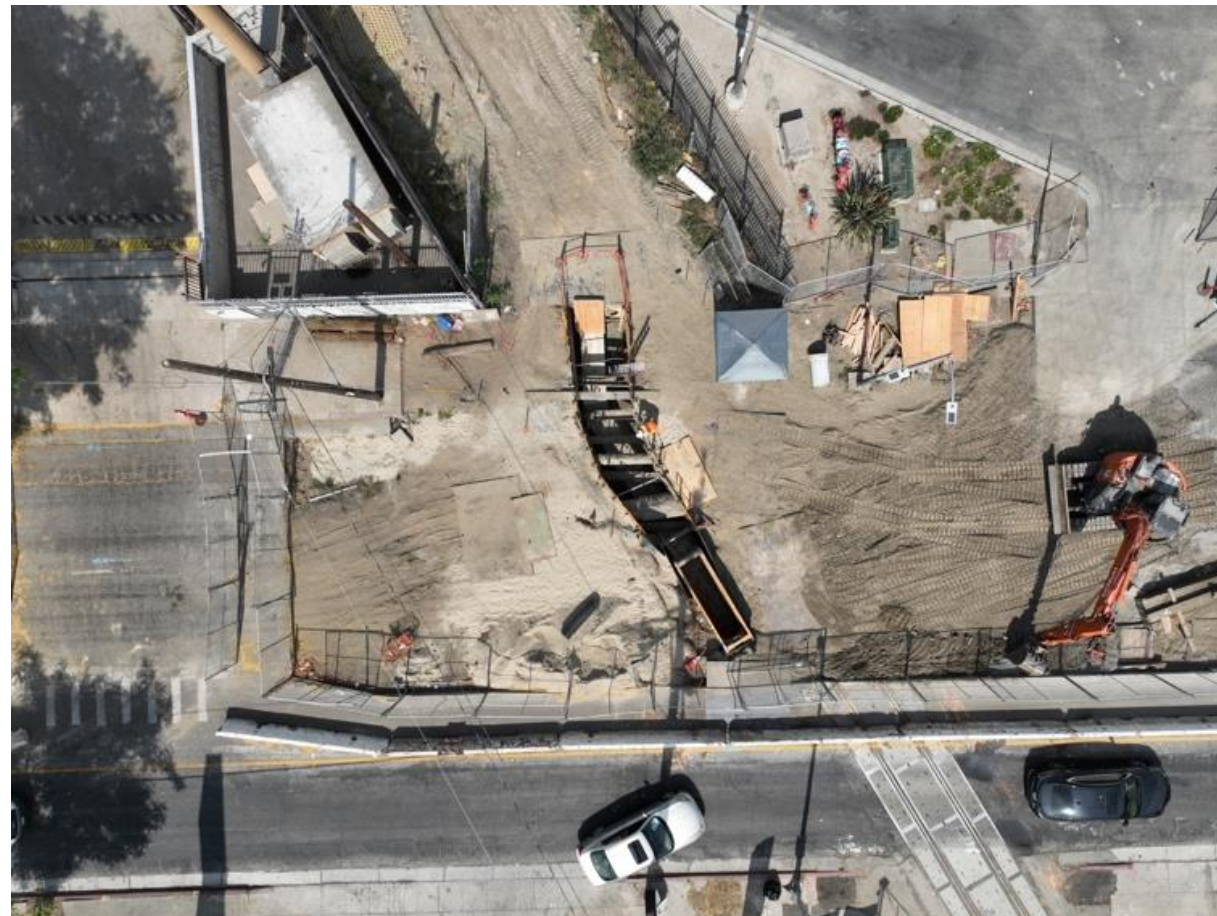
## What to Expect

**Stage 1** closure of southbound Western Av between Slauson Av and 62nd St.

**Stage 2** closure of northbound Western Av between Slauson Av and 62nd St.

## Work hours

- > Workdays from Monday to Saturday
- > The closures will be in place for the duration of activity



Western Av overview

# Current: Vermont Av Intersection Improvement

## Contractor begun the intersection improvement work

- > **When:** May 13, 2023
- > **Where:** Western Av between Slauson Av and 62nd St.
- > **Duration:** approximately months

## What to Expect

**Stage 1** closure of southbound Western Av between Slauson

**Stage 2** closure of northbound Western Av between Slauson

## Work hours

- > Workdays from Monday to Saturday
- > The closures will be in place for the duration of activity



Vermont Av Stage 1B

# Current: Hooper Av Intersection Improvement

## Contractor begun the intersection improvement work

- > **When:** July 18, 2023
- > **Where:** Hooper between Slauson Av and 58th St.
- > **Duration:** approximately two months

## What to Expect

Full street closure on Hooper Av will

Hooper Av will not be accessible from Slauson Av

## Work hours

- > Workdays from Monday to Saturday
- > The closures will be in place for the duration of activity



Hooper Av Intersection Improvement Work

# Current: Towne Av

## Contractor begun the intersection improvement work

- > **When:** June 2, 2023
- > **Where:** Towne Av between Slauson Av and 58<sup>th</sup> St
- > **Duration:** approximately four months

## What to Expect

- > Full street closure on Towne Av
- > Towne Av will not be accessible directly from Slauson Av.
- > Towne Av will be accessible via Avalon Bl or San Pedro St.

## Work hours

- > Workdays from Monday to Saturday
- > The closure will be in place for the duration of the activity



Towne Av Intersection Improvement Work

# On the Horizon: McKinley Av

## Contractor will begin the intersection improvement work

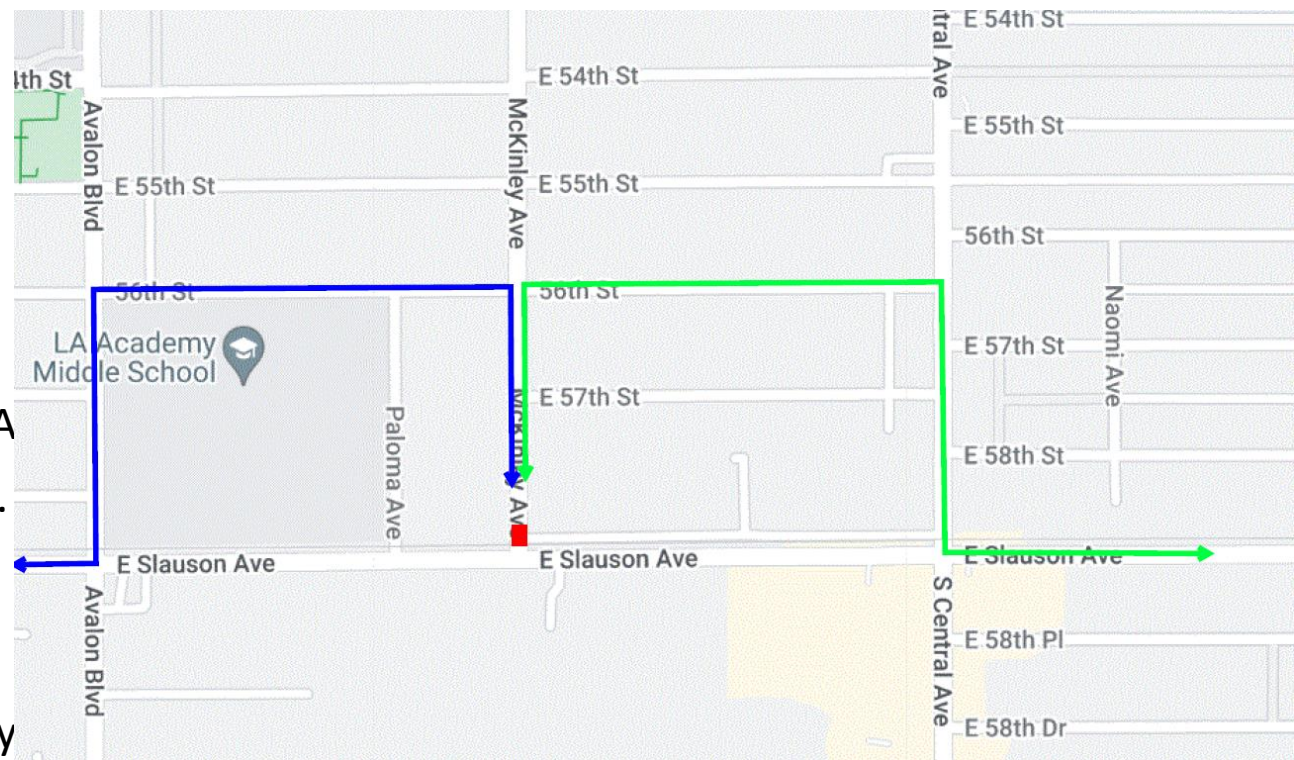
- > **When:** As early as September 8, 2023
- > **Where:** McKinley Av between Slauson Av and 57<sup>th</sup> St
- > **Duration:** approximately two months

## What to Expect

- > Full street closure on McKinley Av
- > McKinley Av will not be accessible directly from Slauson A
- > McKinley Av will be accessible via Avalon Bl or Central Av.

## Work hours

- > Workdays from Monday to Saturday
- > The closure will be in place for the duration of the activity



McKinley Av Intersection Improvement Closure Area

# On the Horizon: Budlong Av

## **Contractor will begin the intersection improvement work**

- > **When:** Late September 2023
- > **Where:** Budlong Av between Slauson Av and 58<sup>th</sup> St
- > **Duration:** approximately two months

## **What to Expect**

- > Full street closure on Budlong Av
- > Budlong Av will not be accessible directly from Slauson Av.
- > Budlong Av will be accessible via W 58<sup>th</sup> St.

## **Work hours**

- > Workdays from Monday to Saturday
- > The closure will be in place for the duration of the activity

# On the Horizon: Cimarron Av

## Contractor will begin the intersection improvement work

- > **When:** TBD
- > **Where:** Cimarron Av between north 62nd St.
- > **Duration:** 1 month

## What to Expect

- > Parking restrictions will be in place on both sides of Cimarron Av

## Work hours

- > 7:00 am to 4:00 pm Monday – Friday
- > The closures will be in place for the duration of the work



# On the Horizon: Haas Av

**Contractor will begin the intersection improvement work**

- > **When: TBD**
- > **Where: Haas Av between north 62nd St.**
- > **Duration: 1 month**

## **What to Expect**

- > Parking restrictions will be in place on both sides of Haas Av

## **Work hours**

- > 7:00 am to 4:00 pm Monday – Friday
- > The closures will be in place for the duration of the work



# Stay In Touch



213.922.9228



*r2r@metro.net*



[www.metro.net/projects/railtorivera/](http://www.metro.net/projects/railtorivera/)

The Project hosts quarterly community meetings

**THANK YOU**