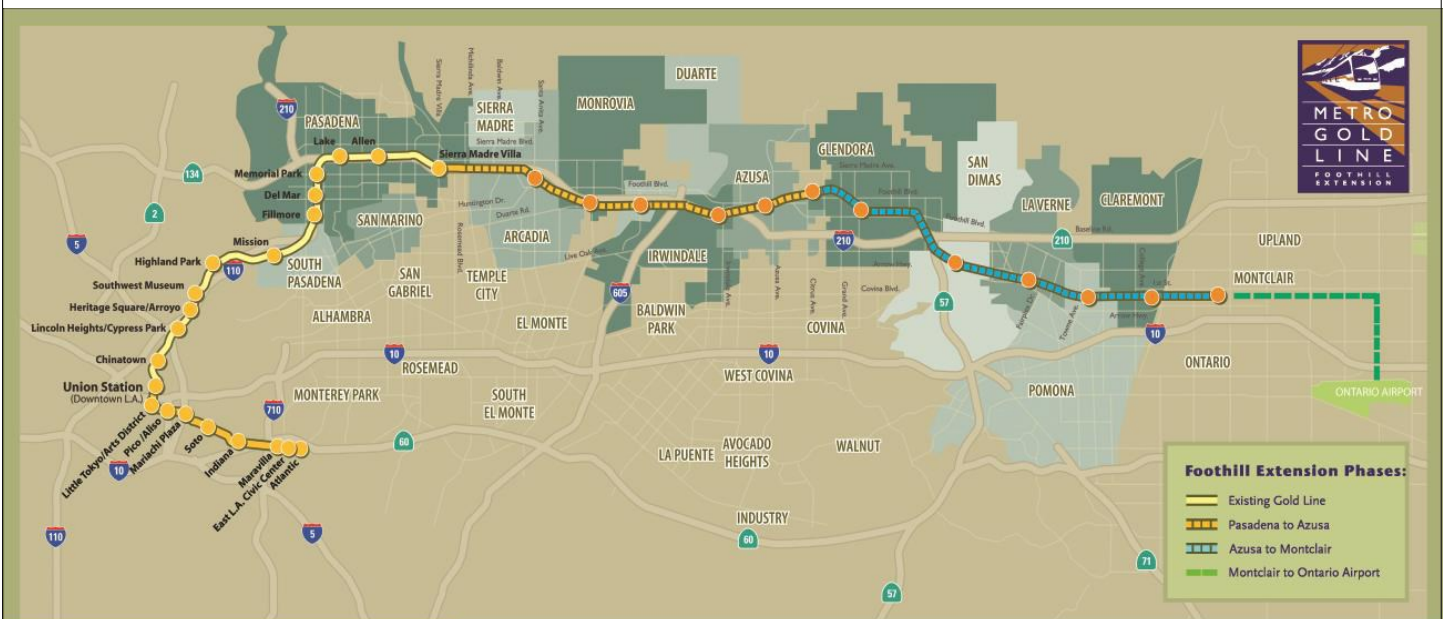


Metro Gold Line

Foothill Extension Project

Monthly Project Status Report

January 2014



Metro Gold Line

Connecting Los Angeles, the San Gabriel Valley and Inland Empire



TABLE OF CONTENTS

PHASE II FOOTHILL EXTENSION PROJECT STATUS

Project Description	3
Pasadena to Azusa Segment	4
Management Issues	4
Key Activities Completed This Period	5
Key Future Activities	6
Critical Path Schedule	7
Critical Path Float Trend	8
Alignment Contract Status	9
Alignment Construction Progress This Period	11
Facility Construction Progress This Period	12
Alignment Construction Progress Next Period	13
Facility Construction Progress Next Period	14
Alignment Construction Images	15
Alignment Change Management Log	17
Parking Facilities and Enhancements Contract Status	20
Parking Facilities and Enhancements Construction Images	22
Parking Facilities and Enhancements Change Management Log	23
Azusa to Montclair Segment	24
Ontario Airport Segment	25
Financial Status	26

FOOTHILL EXTENSION PROJECT DESCRIPTION

The Authority's mandate is to plan, design and construct a 37-mile light rail link between Downtown Los Angeles and Claremont. In addition, the San Bernardino Associated Governments (SANBAG) has requested that planning be extended one mile inside San Bernardino County to the City of Montclair and then to Ontario Airport.

The Metro Gold Line Phase II (Foothill Extension) corridor includes the cities of Pasadena, Arcadia, Monrovia, Duarte, Irwindale, Azusa, Glendora, San Dimas, La Verne, Pomona, Claremont, and Montclair; and the counties of Los Angeles and San Bernardino (Figure 1). The Foothill Extension is estimated to cost approximately \$1.7 billion.

The Foothill Extension will be built in two segments to align effectively with projected cash flows and financial capacity constraints. The first segment is defined from the Sierra Madre Villa Station in Pasadena to the city of Azusa. Revenue service along this segment is planned for the year 2015. The second segment would include an extension from Azusa to the City of Montclair with revenue service projected for the year 2017 and the third segment will be comprised of an extension from Montclair to the Ontario Airport.

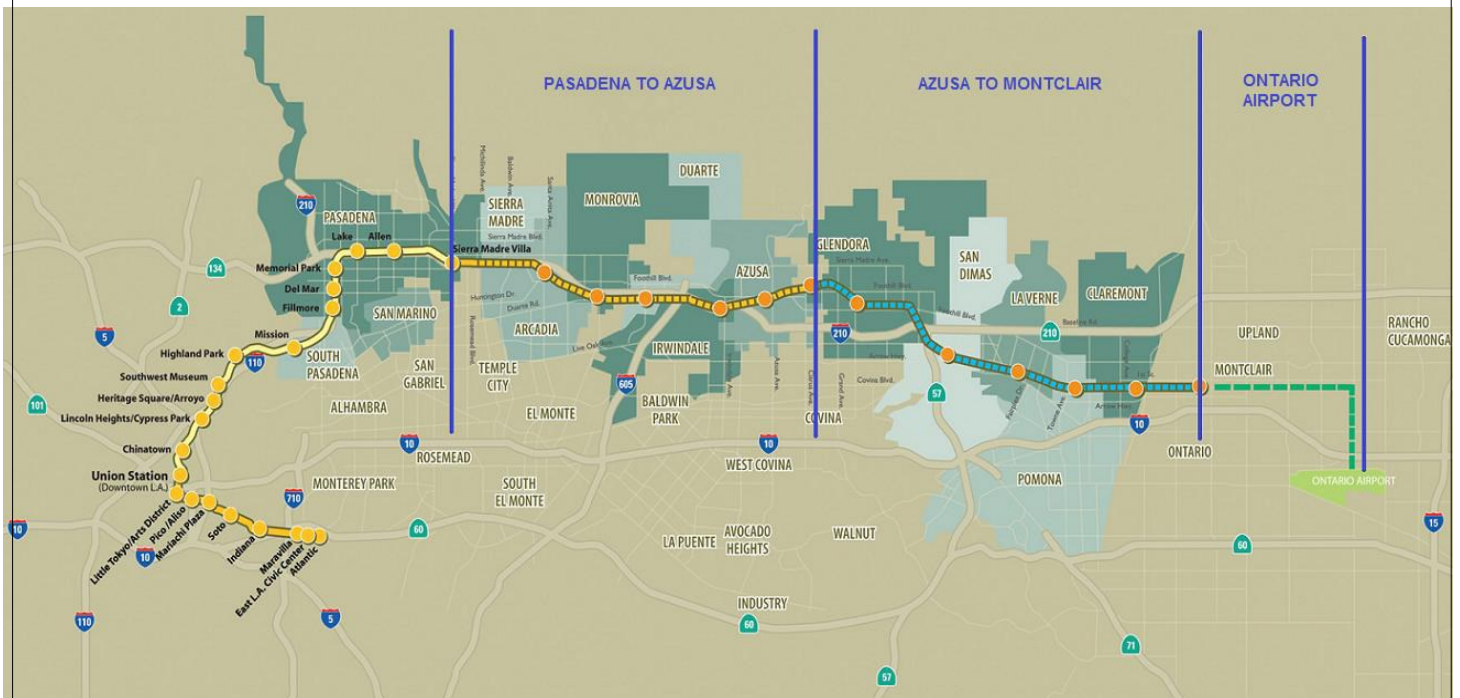


Figure 1: Metro Gold Line Foothill Extension Alignment



Pasadena to Azusa Segment

MANAGEMENT ISSUES

Metro Betterments

During the design process Metro staff have identified betterments that Metro staff would like to add to the project. Metro has provided a final disposition on all but a few items. Authority staff continues to work with Metro staff to resolve the remaining items.

TPSS Delivery Dates

The traction power substations (TPSS) provide equipment to transform utility power to power required for Light Rail Vehicle (LRV) propulsion, and then distribute that power to the LRVs via the overhead wires. Metro is responsible for purchasing the traction power substations. Currently, Metro's schedule indicates that the traction power substation delivery schedule is late. This is a major concern for the Authority as it has potential to impact the project schedule; however, staff is coordinating with Metro and FTC to ensure minimal impact to the project.



KEY ACTIVITIES COMPLETED THIS PERIOD

Staff continued to attend coordination meetings with cities along the alignment

Authority staff continues to meet with Metro staff to review and discuss the status of the Pasadena to Azusa segment

Held regular meetings with the C1135 (DB2) contractor, Foothill Transit Constructors (FTC) and participated in construction site visits and audits

FTC reports the following SBE statistics for the month of October:

- Current SBE commitment: \$ 59,500,000
- SBE percent committed versus value of Project: 13.99%
- Overall Authority Project SBE goal: 16%

FTC reports the following approximate safety statistics to date:

- 543,000 total work hours performed by FTC, Mass Electric, and Subcontractors
- 4 recordable injuries reported
- 0 lost time injuries reported

Continued to review revised AFC drawings for C1135 project

Continued installation of underdrain and sub-ballast throughout the project

Continued trackwork at the Gold Line Operations Campus (Campus)

Continued bridge work at Rosemead, Michillinda, Baldwin, Huntington, Kincaid, and Foothill

Completed Santa Anita Avenue bridge

Continued work at Azusa-Downtown, Azusa-Citrus, Duarte, Monrovia and Arcadia stations

Began construction of Myrtle grade crossing

Continued construction of San Gabriel and 1st & Santa Clara crossings

Completed California grade crossing

Continued installation of freight track between San Gabriel River Bridge and MillerCoors

Continued construction of light rail mainline track

Continued to hold design and coordination meetings with DB3 contractor, Webcor Builders, for the Intermodal Parking Facilities and Enhancements Contract 1150

Completed reviews of 100% design submittals for Arcadia, Monrovia, and Azusa-Citrus facilities

Completed eight AFC drawing packages for C1150 project to date

Continued construction of Arcadia and Monrovia Parking Structure footings and prepared for concrete pour

C1150 design-build contractor continued work at Irwindale intersection, and Michillinda and Soldano TPSS sites



KEY FUTURE ACTIVITIES

Continue discussions with corridor cities regarding the project

Continue management of the Alignment contract, which will include oversight of construction activities and preparation for start-up activities

Continue to meet with Intermodal Parking Facilities and Enhancements Project contractor, Webcor Builders regarding design of the Project

Continue to attend to any issues that may come up by the cities or other stakeholders along the alignment

Complete trackwork at the Campus

Complete construction of the bridges at Foothill, Kincaid, Huntington, Rosemead, Michillinda, and Baldwin

Complete construction of the Azusa-Downtown, Azusa-Citrus, Duarte, Monrovia, and Arcadia stations

Finish work at San Gabriel, Myrtle, and 1st and Santa Clara grade crossings

Begin work at Virginia, Magnolia, and Mountain grade crossings

Finalize design for first three Parking Facilities

Finalize the following property acquisitions:

- Arcadia:

1. Parcel 1301a – Motion for Possession filed with the court
2. Parcel 1301b – Negotiating
3. Parcel 1308 (223 N. First Ave) – Motion for Possession filed with the court
4. Parcel 6039 (325 N. Santa Anita Ave) – PSA out for signature

- Monrovia:

1. Parcel 1802/6035/6030 (1522 S. Mayflower Ave) – Waiting for Purchase Agreement to be signed
2. Parcel 1805/6035/6030 (1602 S. Mayflower Ave) – PSA signed. Ready for escrow

- Duarte:

1. Parcel 6041/6042 (1500 Duarte Rd) – Accepted. Purchase and sale agreement being reviewed by counsel

- Irwindale:

1. Parcel 6028 (16009 Avenida Padilla) – Motion for Possession filed with the court

- Azusa:

1. Parcel 6032 (819 W. 6th St) – In escrow
2. Parcel 6033 (809 E. Santa Fe) – Negotiating with property owner

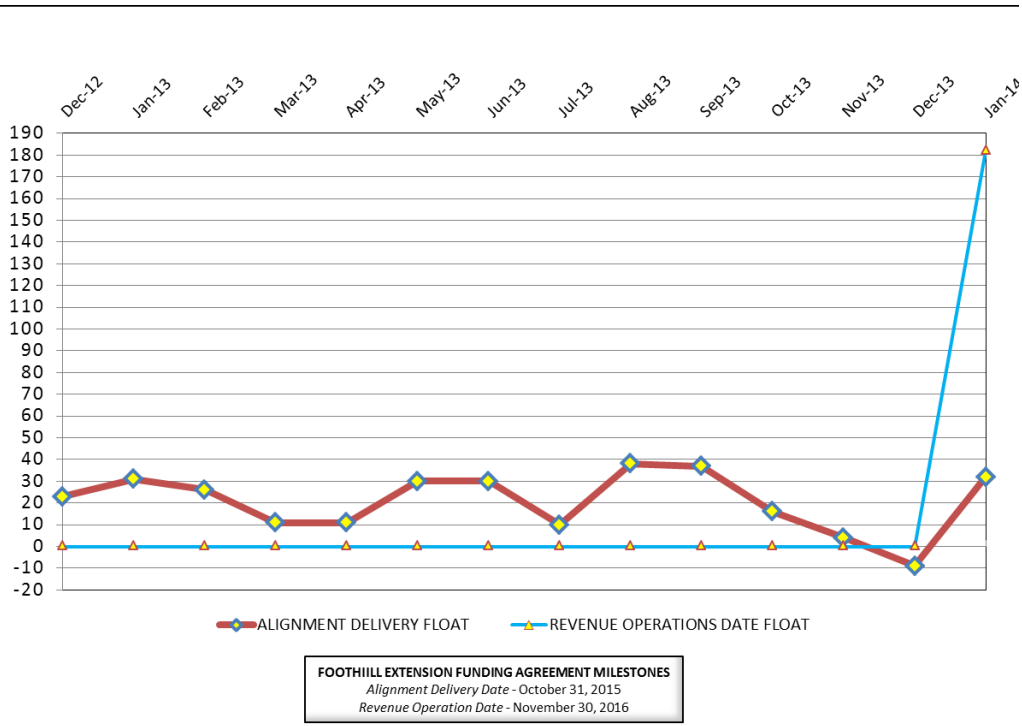


CRITICAL PATH SCHEDULE

Activity Name	OD	RD	AD	Start	Finish	Total Float	Timeline														
							2012			2013			2014			2015			2016		
							Q2	Q3	Q4	Q1	Q2	Q3	Q4	Q1	Q2	Q3	Q4	Q1	Q2	Q3	Q4
REVENUE OPERATIONS DATE - CRITICAL PATH																					
RFP - LRV PROCUREMENT	375	0	557	18.Oct.10 08:00 A	26.Apr.12 15:00 A																
LRV FABRICATION / DELIVER 15 VEHICLES	1353	659	516	17.Aug.12 07:00 A	04.Nov.15 15:00	0															
METRO - Pre-Revenue Operations - Phase 2A	60	60	0	05.Nov.15 07:00	03.Jan.16 15:00	0															
METRO - Project Schedule Contingency (5 Mo.)	150	150	0	04.Jan.16 07:00	01.Jun.16 15:00	0															
Phase 2A - Revenue Operations Date (ROD)	0	0	0		01.Jun.16 15:00*	0															
ALIGNMENT DELIVERY DATE - CRITICAL PATH																					
FOOTHILL BRIDGE (FRT)- CONSTRUCTION	155	85	228	01.Mar.13 07:00 A	13.May.14 15:00	0															
TRACK INSTALLATION - SEGMENT 4 (FRT)	220	90	225	06.Mar.13 07:00 A	27.May.14 15:00	0															
TRACK INSTALLATION - SEGMENT 4 (LRT)	80	80	0	17.Apr.14 07:00	06.Aug.14 15:00	0															
OCS - INSTALLATION - SEGMENT 4	150	150	0	04.Jun.14 07:00	30.Dec.14 15:00	0															
OCS - TESTING - SEGMENT 4	35	35	0	31.Dec.14 07:00	17.Feb.15 15:00	0															
OCS - TESTING - SEGMENT 2	35	35	0	18.Feb.15 07:00	07.Apr.15 15:00	0															
SYSTEMS INTERGRATION TESTING	125	125	0	08.Apr.15 07:00	29.Sep.15 15:00	0															
C1135 - >>>SUBSTANTIAL COMPLETION - 1420 CD<<<	0	0	0		29.Sep.15 15:00*	0															
METRO - System Testing & Start-Up - Phase 2A	30	30	0	30.Sep.15 07:00	29.Oct.15 15:00	6															



CRITICAL PATH FLOAT TREND



Revenue Operations Date Critical Path - (182 Calendar Days)

The Metro Light Rail Vehicle Fabrication remains on the critical path this period. This period, Metro has stated the 15th vehicle will be delivered by November 2015, which is nine months earlier than the previous projection. Upon completion of the delivery, Pre-Revenue Operations will begin and it is anticipated that it will be completed by January 2016.

Since the project has surpassed the 50% mark, Metro has reduced the 10 month schedule contingency to 5 months. As a result, the Metro Revenue Operations Date is June 2016, which is 6 months ahead of the target per the Funding Agreement date of November 2016. However, Metro is forecasting a March 2016 Revenue Operations Date.

Alignment Delivery Date Critical Path - (32Calendar Days)

This period, the Foothill Freight Bridge fabrication and installation remains on the critical path. The steel girder fabrication was completed later than previously projected and as a result the bridge completion is anticipated to be completed by May 2014. The impact will delay the completion of the freight track realignment. However, the C1135 Design/Build Contractor will mitigate the Foothill freight bridge delays by mobilizing an additional resources to start the Segment 4 light rail tracks at the available areas and complete the remaining freight track concurrent with the light rail tracks. In addition, the track installation will be accelerated to allow earlier access for the OCS installation and testing. Upon the completion of Systems Integration testing, the C1135 Contractor will achieve Substantial Completion and turn-over to Metro for Pre-Revenue Testing.

Other elements of construction work, which are in progress and near critical are Rosemead Bridge Rehabilitation, Myrtle Grade Crossing, Segment 4 Retaining Walls, Segment 4 Grading & Drainage, and Huntington Bridge.

Project Float

The project float for the Revenue Operations Date has increased to 182 days. The critical activities on this path are on schedule to meet the Target Revenue Operations Date of November 2016. The Alignment Delivery Date float value improved 41 days this period. The Alignment Delivery Date is currently 32 days ahead the October 31, 2015 deadline.



Description: Alignment Design / Build

Status: January 15, 2014

Contract No.: C1135

Contractor: Foothill Transit Constructors (Kiewit-Parsons J.V.)

Cost Summary:

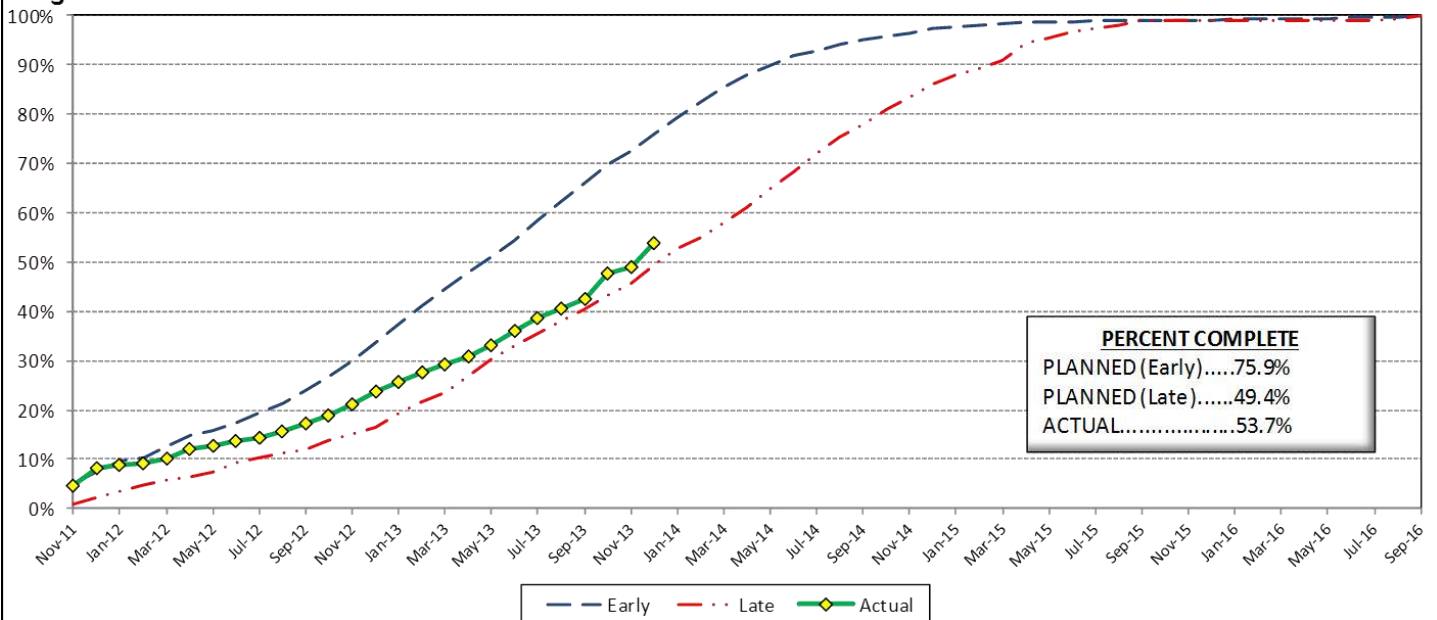
	Million(s)
CONTRACT	
Contract Award Value:	485.9
Executed Change Orders:	8.8
Current Contract Value:	494.7
Potential Change Orders:	2.5
Current Forecast:	497.2
Earned Value/Actual Cost	237.8
AUTHORIZATION FOR EXPENDITURE	
Budget	507.6
Commitment	503.6
Balance	6.3

Cost Assessment:

This period the Contract forecast increased \$364,000. The major PCO's issued this were for PCO 043 - *St. Joseph TPSS Wall*, PCO 045 - *Mountain Interlocking Bungalow*, PCO 047 - *M&O Body Shop Changes*, and RFC 060 - *Alameda South Side Water Line Change*. The offsetting deductive cost was minor this period, RFC 053 - *Concrete Utility Removal at Sta 1254+00* was withdrawn.

The Design-Build Contractor has earned 259,791,496.34 Million and is currently 53.7% complete. The progress is currently 22.2% behind the early planned curve, which is due to fabrication and delivery progress for materials such as Special Track Work, Steel Bridge Girders and M&O Equipment. In addition, the Segment 3 track work installation and Azusa Citrus and Alameda Stations are behind the baseline plan.

Progress Curve



Schedule Summary:

Contract Award:	07/27/11
Interim Notice to Proceed (INTP) :	11/03/11
Original Contract Duration:	1,780 Calendar Days
Current Contract Duration:	1,780 Calendar Days
Elapsed Time from NTP:	804 Calendar Days

Contract Milestones

Milestones	Description	Original Contract	Current Contract	Forecast	Variance
1	Substantial Completion	09/23/15	09/23/15	09/29/15	(6)
2	Punchlist Complete	06/19/16	06/19/16	06/25/16	(6)
3	Final Completion	09/17/16	09/17/16	09/23/16	(6)
4	Access - IFS Br.	12/15/12	12/15/12	12/15/2012 A	0
5	Test Track Complete	03/27/15	03/27/15	04/11/15	(15)
6	Colorado Br. Demo Complete	02/01/12	02/01/12	6/15/2012 A	(135)

Schedule Assessment:

The critical path continues to run through the Foothill Freight Bridge construction. This period, the critical path slipped due to anticipated delivery delays due resulting from the Foothill Freight fabrication progress. The fabrication delay will impact the completion of the bridge installation and the final completion of the freight track re-alignment. As a result, the late completion of this work will impact the start of Segment 4 track installation and the remainder of the critical path, which continues through the OCS installation and testing, followed by systems integration testing.

The schedule contains minimal float between all Segments and will require concurrent installation of track work in Segments 1, 3 and 4.

The Test Track Completion is forecast to be available on April 11, 2015, which is 35 days behind the target date.



Description: Alignment Design / Build

Status: January 15, 2014

Contract No.: C1135

Contractor: Foothill Transit Constructors (Kiewit-Parsons J.V.)

Progress Completed This Period

Design

- Submit AFC Design - Rockvale Waterline Casing
- Submit AFC Design - M&O Drainage Improvements
- Submit AFC Design - M&O Body Shop Changes
- Submit AFC Design - Mountain Bungalow & J-Ditch

Construction

- See "Construction Progress This Period"

Activities Planned Next Period

Design

- Submit 100% Design - SCADA
- Submit AFC Design - Train Control Book of Plans (Zone 4)
- Submit AFC Design - Train Control Book of Plans (Zone 12)

Construction

- See "Construction Progress Next Period"

Areas of Concern

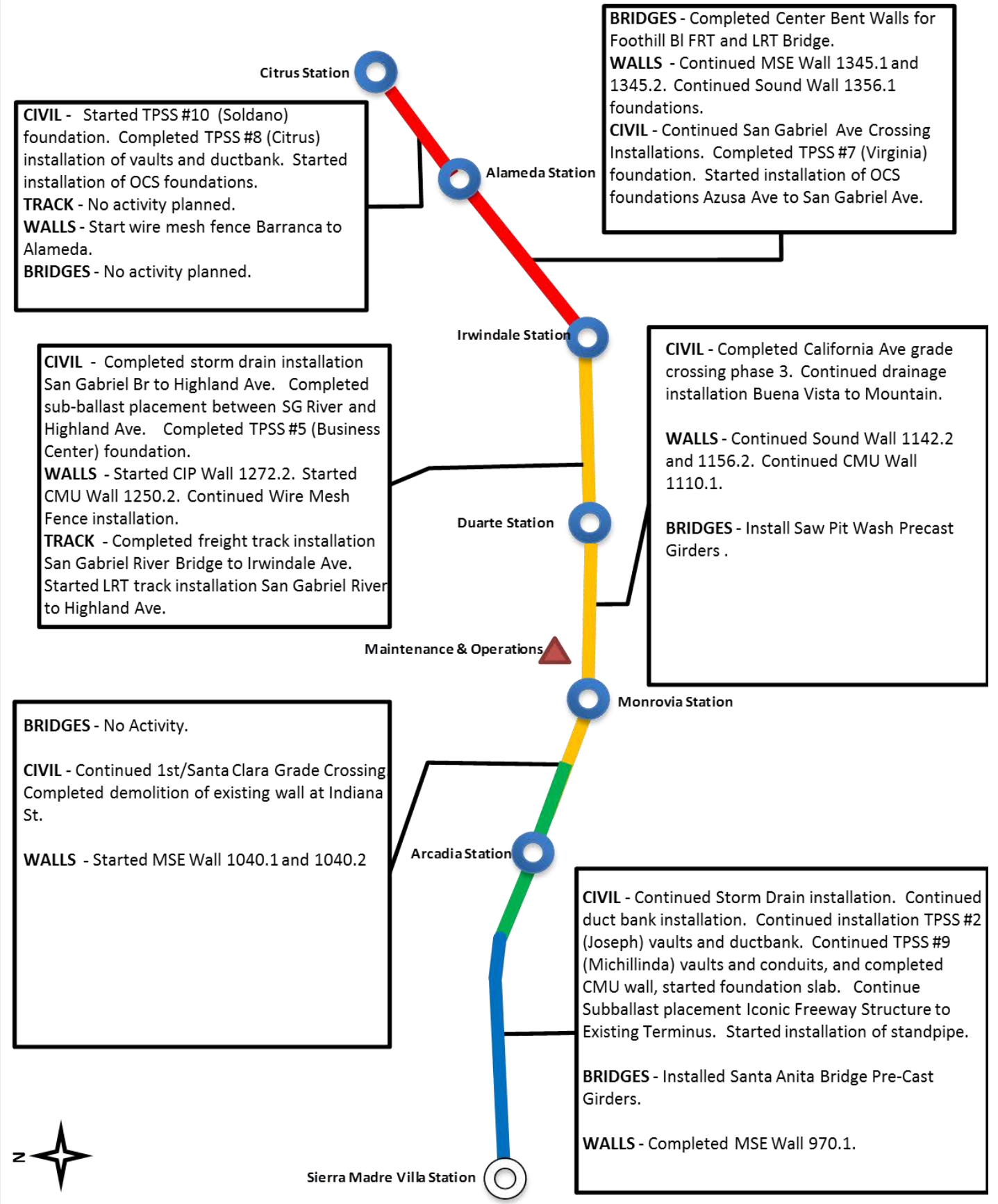
- **Grade Crossing Schedule.** The Grade crossing durations and schedules are slipping due to productivity. The Authority is working with the Design-Build Contractor to plan grade crossing activities and complete the work within the constraints established by Cities. The Design-Build Contractor has implemented the revised grade crossing sequence and has mitigated potential CPM schedule delays. However, the Design-Build Contractor has indicated in the revised schedule, that the re-sequence was due to additional schedule requirements by the Cities and may require additional costs.

Areas of Concern (Continued)

- **Segment 3 Grade Crossing Property Acquisitions.** The Design-Build Contractor has been late delivering parcel legal descriptions in a timely manner. There is a potential schedule impact to the Segment 3 grade crossing construction and schedule if the parcel legal descriptions are not approved. The Authority will attempt to mitigate potential delays by obtaining Right-of-Entry from property owners prior completing negotiations.



ALIGNMENT CONSTRUCTION PROGRESS THIS PERIOD





FACILITY CONSTRUCTION PROGRESS THIS PERIOD

Citrus Ave Station

STATION - Started excavation, installation grounding grid, underground conduits and platform foundation forms & rebar installation.
PARKING - No activity.

STATION - Completed waterline. Continued installation of underground conduits. Started south platform foundations.

PARKING - No activity.

Alameda Station

STATION - No activity.
PARKING - Completed N. Irwindale Ave Phase 2 street restoration. Started Phase 3 street restoration.

Irwindale Station

STATION - Completed station concrete finishing. Started installation of canopy structural steel.
PARKING - No activity.

CIVIL - Continued Shamrock 8" sewer. Completed 24" storm drain. Completed installation of TPSS ductbanks and manholes.

TRACK - Completed embedded track installation at Paint Shop, and Body Shop M&O Shops. Started installation of embedded track at Heavy Repair, Service & Inspection, Wheel Truing Pit, and Blow Down. Continued Ballast and track installation at North Storage Track and Turnout Switches.

STRUCTURES - Continued Cleaning Platform deck. Completed M&O Building Foundations & Slab on Grade. Started M&O Building structural steel installation. Completed Car Wash settling pit.

Maintenance & Operations

Duarte Station

STATION - Continued North and South platform decks.
PARKING - No activity.

Monrovia Station

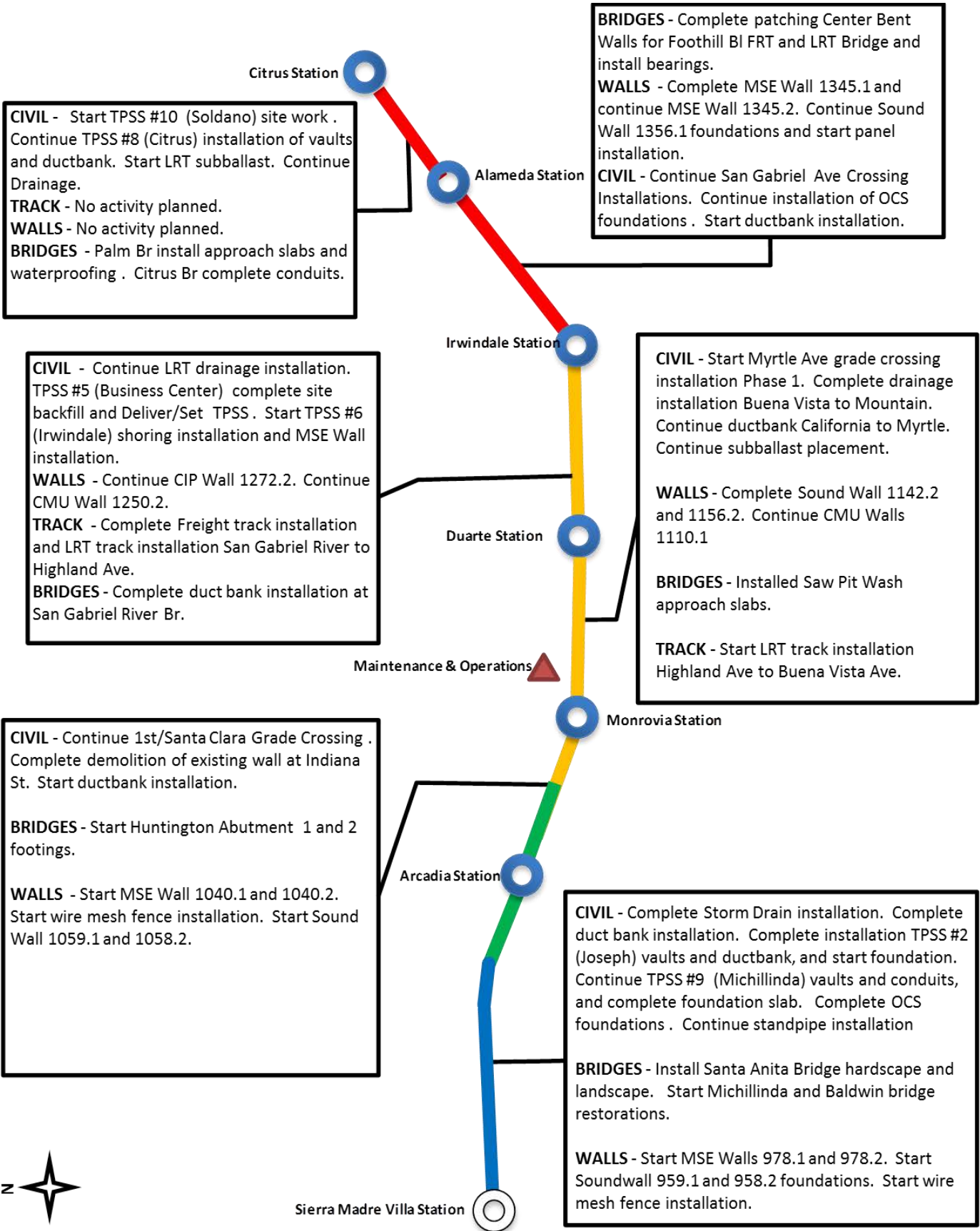
STATION - Completed concrete patching and finishing.
PARKING - Completed SCE wire and cable for Utility Cutover. Removed existing utility poles. Completed installation of Geopiers.

Arcadia Station





ALIGNMENT CONSTRUCTION PROGRESS NEXT PERIOD





FACILITY CONSTRUCTION PROGRESS NEXT PERIOD

Citrus Ave Station

STATION - Complete installation platform footing. Start installation of platform walls.
PARKING - No activity planned.

STATION - Complete south platform footing, continue south platform walls, start south platform footing backfill. Start North platform footing excavation and footing installation.
PARKING - No activity planned.

Alameda Station

STATION - Start platform footing excavation, and the installation of grounding & underground conduits.
PARKING - Complete N. Irwindale Phase 3 street restoration.

Irwindale Station

STATION - Complete canopy structural steel installation. Install track underdrain.
PARKING - No activity planned.

CIVIL - Complete Shamrock 8" waterline. Continue 24" storm drain. Continue installation of infiltration basins. Install TPSS Foundation.
TRACK - Complete embedded track installation at Heavy Repair, Service & Inspection, and Blowdown. Continue Ballast and track installation at North Storage Track and Turnout Switches. Start subballast placement at Southwest yard.
STRUCTURES - Complete Cleaning Platform deck and ramps. Continue M&O Building structural steel installation. Start Car Wash slab on grade.

Duarte Station

STATION - Complete platform decks. Start ramps footings. Start installation of plumbing and electrical conduits.
PARKING - Start installation of footings. Start level 1 column rebar and forms. Install elevator casing.

Maintenance & Operations

Monrovia Station

STATION - Start installation of canopy structural steel. Start installation of underdrain.
PARKING - Complete installation of footings, start installation level 1 columns, shear walls, and CMU Ramp Walls.

Arcadia Station



ALIGNMENT CONSTRUCTION IMAGES

Segment 1: Duct Bank Excavation
near Sierra Madre Villa



Segment 2: Huntington Bridge Abutment 2
Excavation

Segment 3: Waterline Work at Myrtle Avenue



ALIGNMENT CONSTRUCTION IMAGES (CONTINUED)



Segment 3: Santa Anita Wash Abutment 1 Backwall

Segment 4: Azusa-Downtown Station
Platform Wall Formation



M&O: Main Shop Building Structural Steel



Change Management Log

Date: 2/5/2014

Page: 1 of 3

Project: C1135 Alignment - FTC Contract #: C1135

Original Contract Amount:	\$485,867,000				
Approved Change Orders:	\$8,917,433	1.84%	Pending Change Orders:	\$0	0.00%
Current Contract Total:	\$494,784,433		Pending Contract Total:	\$494,784,433	1.84%

Change Orders

Number	Change Management	Title	Initiated Date	Approved Date	Outstanding Days	Time Extension	Amount
EXECUTED Change Orders							
001.00	000.00	Interim NTP	11/3/2011	11/3/2011	0		\$0
002.00	013.00	Colorado Bridge Haz Mat	5/17/2012	5/18/2012	1		\$121,382
002.01	013.01	Colorado Bridge HazMat - Final	9/5/2012	9/7/2012	2		\$13,164
003.00	001.00	Sound Wall Deletion - Duarte Road	7/12/2012	7/18/2012	6		(\$74,707)
004.00	018.00	Revise Block Design - CBD Calc	8/23/2012	8/29/2012	6		\$3,986
004.01	018.01	Revise Block Design - CBD Calc - 2	9/5/2013	9/11/2013	6		\$0
005.00	023.00	Wayside Signal Aspect Revision	9/6/2012	9/7/2012	1		\$26,072
005.01	023.01	Wayside Signal "Call On" Function	10/30/2013	11/1/2013	2		\$75,169
006.00	040.00	Arcadia Frieze, Bench-Artist Design	9/6/2012	9/10/2012	4		\$13,683
006.01	040.01	Arcadia Frieze, Bench-Construction	3/7/2013	3/12/2013	5		\$155,894
007.00	019.02	Soils Testing Abutments & Fdns	9/14/2012	9/18/2012	4		\$44,993
008.00	041.00	Unknown Utilities RFCN 005 006 008	9/14/2012	9/18/2012	4		\$132,450
009.00	038.00	Illuminate City Names @ Stations	9/18/2012	9/24/2012	6		\$184,657
010.00	046.00	SGRB - Lead Based Paint Remediation	9/21/2012	9/24/2012	3		\$244,536
011.00	004.00	Station Architectural Changes	10/11/2012	10/12/2012	1		\$443,950
012.00	003.01	Systems and Testing for Added TPSS	12/13/2012	12/14/2012	1		\$1,443,193
013.00	005.02	IDIQ Comm Contract (Rev 2)	12/14/2012	1/22/2013	39		\$698,259
014.00	060.00	Sewer Encasement Changes in Azusa	12/18/2012	1/24/2013	37		\$141,354
015.00	037.02	M&O - Materials Storage Revisions	12/26/2012	1/15/2013	20		\$62,862
015.01	037.03	M&O Storage Shelving Revisions	9/16/2013	9/19/2013	3		\$20,380
016.00	002.00	Relocation of Access Road to 3M Fac	12/26/2012	1/16/2013	21		\$53,814
017.00	025.00	3 Electrical Casings for ALW	2/27/2013	3/1/2013	2		\$219,033
018.00	073.00	Hazardous Abatement at Bridges	1/15/2013	2/6/2013	22		\$1,081,803
019.00	054.00	City of Hope Conduits	1/11/2013	1/22/2013	11		\$34,313
020.00	059.00	Citrus TPSS Transformer Pad Changes	2/6/2013	2/7/2013	1		\$34,536
021.00	075.00	Demo & Replace Palm Dr. Roadway	2/7/2013	2/14/2013	7		\$90,365
022.00	077.00	M&O Differing Site Conditions; Pt 1	2/13/2013	2/15/2013	2		\$66,360
022.01	093.00	M and O DSC T and M Work Part 2	3/8/2013	3/12/2013	4		\$66,625
022.02	103.00	M and O DSC Part 3	3/27/2013	3/28/2013	1		\$35,211
022.03	115.00	DSC at M and O Part 4	5/3/2013	5/7/2013	4		\$5,706
023.00	089.00	Contaminated Soil Abatement	2/26/2013	2/27/2013	1		\$422,068
024.00	068.00	Monrovia Sound Wall Panel Change	2/26/2013	2/28/2013	2		(\$24,150)
025.00	052.00	Santa Anita Trail Detour	3/8/2013	3/12/2013	4		\$27,691
026.00	070.00	Block Type Change at M&O Building	3/26/2013	3/26/2013	0		\$35,016
027.00	065.00	M&O IT Changes-Duct Banks/Conduits	3/26/2013	3/26/2013	0		\$88,650
027.01	065.01	M&O IT Changes - Power to WAP	9/4/2013	9/6/2013	2		\$73,049
028.00	039.01	Delete Layover Building	4/11/2013	4/12/2013	1		(\$313,832)
029.00	095.00	8in Sanitary Sewer Line- Alameda Av	4/23/2013	4/25/2013	2		\$226,089
029.01	095.01	Alameda Sewer Line Revised Scope	11/22/2013	11/26/2013	4		(\$37,425)
030.00	102.00	M&O-Disconnect Switches, Insulators	4/23/2013	4/25/2013	2		\$67,817
031.00	110.00	Rmv Abandoned Utility Line @ Dalton	4/23/2013	4/25/2013	2		\$1,562
032.00	104.00	Highland Ave Abandoned CMP sleeves	5/1/2013	5/3/2013	2		\$15,005
033.00	114.00	Remove contaminated wood culvert	5/3/2013	5/7/2013	4		\$4,714
034.00	128.00	M&O Backup Power/Generator Changes	5/13/2013	5/21/2013	8		\$121,340
035.00	083.00	M&O Vehicle Sanding System Changes	5/21/2013	5/24/2013	3		\$27,463



Change Management Log

Project: C1135 Alignment - FTC Contract #: C1135

Change Orders

Table with columns: Number, Change Management, Title, Initiated Date, Approved Date, Outstanding Days, Time Extension, Amount. Includes a subtotal of \$8,917,433.

Open PCOs

Open RFCs

Table with columns: PCO Number, Title. Row: 022.02 M&O IT Changes - Remaining Work

Table with columns: RFC Number, Title. Row: 022.00 MandO Facility Train Control and Si



Change Management Log

Date: 2/5/2014

Page: 3 of 3

Project: C1135 Alignment - FTC Contract #: C1135

Open PCOs

PCO Number	Title
OPEN	
027.01	M&O / 3M Fence Revisions (rev 1)
029.00	Del. Irwindale/Gladstone Mitigation
031.00	Rockvale Water Line Mitigation
045.00	Move Mountain Interlocking Bungalow
046.00	1st/Santa Clara Grade X-ing Changes
047.00	M&O Body Shop Changes
049.02	M&O Trimming Table Changes (Rev. 2)
050.00	M&O Car Wash Betterments
052.00	Alameda Utility Changes
053.01	Irwindale Ramp Changes (Rev 1)
056.00	M&O Parts Carousel Extended Warranty
057.00	Added Sound Wall East of IFS
059.00	Mayflower Driveway/Wall Credit
062.00	Delete Equipment at ROC
063.00	M&O-Volume Control for PA Speakers
064.00	Irwindale TPSS-Adjust Eqpt. Layout
065.00	Azusa-Citrus Ped Crossing Operation
066.00	Red Signal Violation Indication
067.00	Brandt Truck Coupler Upgrade
068.00	M&O-MOW Canopy Structural Eval
069.00	Install Sound Wall Door @ STA. 1169

Open RFCs

RFC Number	Title
OPEN	
048.00	Remove Contaminated Wood CSP
062.00	Accelerated Work at California Ave

Open RFC Notices

Number	Title
037.00	DSC at Santa Anita Wash Abutment 1
041.00	M and O Facility Fire Flow Rate
044.00	DSC Utility at Azusa Avenue
057.00	Rmvl Contmntd Wd Mtrls Stanta Anita
058.00	Removal of IR 0271 Abandoned Utilit
065.00	Remove and Replace CMU
067.00	Unknown Utility at Huntington Bridg



Description: Intermodal Parking Facilities & Enhancements **Status:** January 15, 2014

Contract No.: C1150

Contractor: Webcor Builders

Cost Summary:

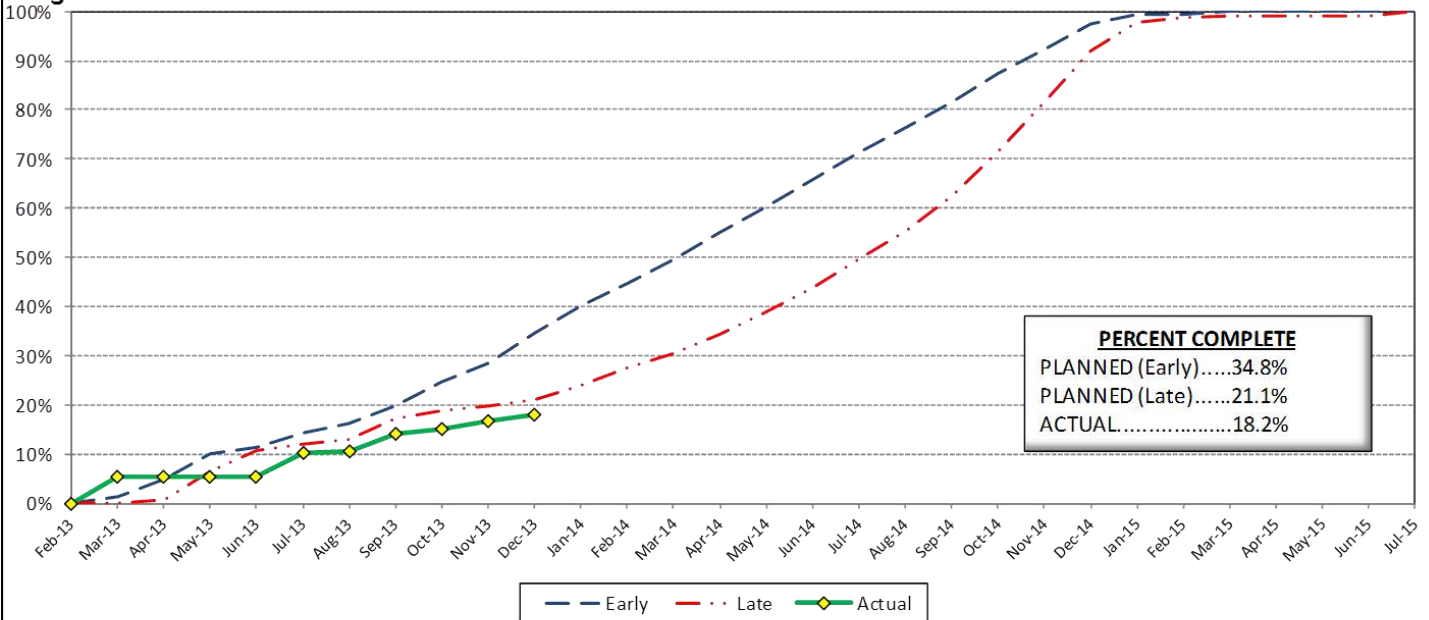
	Million(s)
CONTRACT	
Contract Award Value:	48.8
Executed Change Orders:	0.3
Current Contract Value:	49.0
Potential Change Orders:	0.1
Current Forecast:	49.1
Earned Value/Actual Cost	6.8
AUTHORIZATION FOR EXPENDITURE	
Budget	50.3
Commitment	50.3
Balance	1.1

Cost Assessment:

The current cost forecast is 49.1 Million. The forecast increased \$47,000 from the previous period. The increase is due to CO 003 - *Relocate Elevator at Azusa Citrus*, and PCO 010 - *Arcadia Transit Plaza Betterments*. The current forecast is within the authorized budget.

The Design-Build Contractor is trending beyond the late curve, which is due to the progress of the AFC designs, which include *Irwindale Parking Structure*, *Azusa-Citrus Parking Structure*, *Arcadia Parking Structure*, and *Monrovia Parking Structure*. In addition, The Design-Build Contractor reported progress is behind due to late delivery of the Schedule of Values for CDRL's, and Azusa-Citrus Parking Facility Construction.

Progress Curve



Schedule Summary:

Contract Award:	02/27/13
Interim Notice to Proceed (INTP) :	03/20/13
Original Contract Duration:	845 Calendar Days
Current Contract Duration:	845 Calendar Days
Elapsed Time from NTP:	301 Calendar Days

Contract Milestones

Milestones	Description	Original Contract	Current Contract	Forecast	Variance
1	Substantial Completion	03/15/15	03/15/15	05/06/15	(52)
2	Punchlist Complete	05/29/15	05/29/15	07/20/15	(52)
3	Final Completion	07/13/15	07/13/15	09/03/15	(52)
4	TPSS Work	03/01/14	03/01/14	02/28/14	1

Schedule Assessment:

This period the critical path slipped due to the potential re-design of the Irwindale Site Prep and Parking Structure design packages. The packages will be re-designed to avoid a conflict with the existing Southern California Edison utility line. The re-design will impact the start of the Irwindale site preparation work, which includes the construction of the soil nail wall and MSE wall. Upon completion of the walls, the Design-Build Contractor will start the parking structure construction. At this time, there is a potential impact of 52 days to the Substantial Completion milestone.

The TPSS Deadline critical path has improved this period and is currently on schedule for completion by March 1, 2014.



Description: Intermodal Parking Facilities & Enhancements **Status:** January 15, 2014

Contract No.: C1150

Contractor:

Webcor Builders

Progress Completed This Period

Design

- Re-Submit Monrovia - Enhancements - 100%
- Re-Submit Monrovia - Parking Structure - 100%
- Submit AFC Arcadia - (Partial) Parking Structure
- Submit AFC Monrovia - (Partial) Parking Structure

Activities Planned Next Period

Design

- Submit AFC Design - Arcadia Parking Structure
- Submit AFC Design - Monrovia Parking Structure
- Submit AFC Design - Monrovia Enhancements
- Submit QA/QC Plan - Part 2
- Submit QA/QC Plan - Part 3
- Submit AFC Design - Azusa-Citrus Parking Structure
- Submit AFC Design - Azusa-Citrus Site Prep
- Submit AFC Design - Azusa-Citrus Enhancements

Areas of Concern

- **IRWINDALE PARKING STRUCTURE DESIGN** - The Authority will issue the Design-Build Contractor a Potential Change Order to revise the location of the Irwindale Parking Structure from the current location identified in the 85% design submittal. The revised design will require the parking structure to be moved in order to avoid a utility conflict with the existing SCE distribution line. The redesign effort will impact the completion of the AFC design and potentially impact the Substantial Completion milestone.

Areas of Concern (Continued)

-

PARKING FACILITY CONSTRUCTION IMAGES

Arcadia Parking Structure Site



Soldano TPSS Site

Michillinda TPSS Site





Change Management Log

Date: 2/5/2014

Page: 1 of 1

Project: C1150 Parking - Webcor Contract #: C1150

Original Contract Amount:	\$48,750,000				
Approved Change Orders:	\$276,521	0.57%	Pending Change Orders:	\$0	0.00%
Current Contract Total:	\$49,026,521		Pending Contract Total:	\$49,026,521	0.57%

Change Orders

Number	Change Management	Title	Initiated Date	Approved Date	Outstanding Days	Time Extension	Amount
EXECUTED Change Orders							
001.00	001.00	Monrovia Parking Alternative Layout	6/25/2013	7/11/2013	16		\$21,382
001.01	001.01	Monrovia Alternative - Cancelation	9/17/2013	10/7/2013	20		(\$12,006)
002.00	003.00	Clock Tower Procurement	7/3/2013	7/11/2013	8		\$107,246
003.00	002.00	Relocate Elevator @ Azusa-Citrus PF	12/18/2013	1/8/2014	21		\$159,899
						Subtotal:	\$276,521
PENDING Change Orders							
004.00	013.00	Irwindale Structure Relocation	1/23/2014		13	90	\$0
						Subtotal:	\$0
						Subtotal:	\$0
						Total:	\$276,521

Open PCOs

PCO Number	Title
OPEN	
004.00	TPSS Grounding Grid Modifications
006.00	St. Joseph Drainage Enhancements
007.00	St. Joseph TPSS Wall
008.00	Azusa-Citrus Plaza Pavers
009.01	Irwindale Intersection Betterments
010.00	Arcadia Transit Plaza Betterments
011.00	Soldano TPSS Added ROW Fence
012.00	Additional Conduit Provisions
013.00	Primrose Avenue cul-de-sac Deletion
014.00	Delete Azusa-Alameda Enhancements

Open RFC Notices

Number	Title
001.00	Arcadia Unforeseen Items
002.00	Monrovia unforeseen items
003.00	Michillinda unforeseen items



AZUSA TO MONTCLAIR SEGMENT

ACTIVITIES COMPLETED THIS PERIOD

Authority Board certified the EIR for the Azusa to Montclair segment on March 6, 2013. Following certification, staff filed the Notice of Determination (NOD) with both counties (Los Angeles and San Bernardino). This filing started a 30-day statute of limitations to court challenges to the approval of the project.

The City of Pomona filed a challenge to the EIR, subsequent to which the Authority and the City of Pomona resolved the environmental challenge and executed a settlement agreement. Authority staff issued the Request for Proposals (RFP) for the advanced conceptual engineering support and NEPA consultant.

KEY FUTURE ACTIVITIES

The Authority will receive proposals from consultants in response to the RFP for the advanced engineering support and NEPA consultation in early March, and will initiate the review and selection process for award in April 2014 .

Federal Transit Administration (FTA)

The Metro Board of Directors excluded the Gold Line from seeking federal New Starts funding. The Authority will work together with Metro along with the Congressional delegation to seek funding to construct the extension following completion of the environmental review.



ONTARIO AIRPORT SEGMENT

ACTIVITIES COMPLETED THIS PERIOD

Staff continued to pursue the needed funding to conduct the Alternatives Analysis for the Ontario Airport Segment. The Authority is in discussions with the San Bernardino Associated Governments (SANBAG) and other agencies to develop a funding agreement for a portion of the initial Alternatives Analysis study. The Authority has decided to fund the Alternatives Analysis in the meantime, and plans on releasing the Request for Proposals for this segment in March 2014.

KEY FUTURE ACTIVITIES

Authority staff will continue to work with SANBAG and Cities to obtain funding for this Segment. Authority staff continues to finalize the Scope of Work for the Alternative Analysis Study RFP to issue in March 2014.



PHASE II FOOTHILL EXTENSION FINANCIAL STATUS

Project Operating Budget Summary in Millions of Dollars

January 31, 2014

	(a)	(b)	(c=a-b)	(d)
FINANCIAL PLAN	Current Budget	Funding Committed to Project	Uncommitted Funds	Revenues Received
SCAG	1.0	0.9	0.1	0.9
Interest Income	2.0	2.0	-	2.0
Bridge Replacement	13.9	13.9	-	13.9
Phase I Carryover	4.0	4.0	-	4.0
Maintenance and Operations Facility	-	-	-	-
Cities	11.0	-	11.0	-
Measure R - Pasadena to Azusa	810.5	777.0	33.5	314.9
Measure R - Azusa to Montclair	-	-	-	-
SANBAG	55.2	1.5	53.7	1.5
Federal TCSP	2.9	2.9	-	2.4
Federal Bus Intermodal Plan	9.0	9.0	-	2.6
Federal New Starts 2004 MTA Passthrough	4.0	4.0	-	4.0
Federal New Starts 2005 MTA Passthrough	0.5	0.5	-	0.5
Federal New Starts 2006 Corridor Study	2.5	2.5	-	2.3
Federal/Other	802.5	-	802.5	-
Total Revenues	1,719.0	818.2	900.8	349.0
	(a)	(b)	(c)	(d=a-b)
	Current Budget	Current Obligation	Current Expenditures	Current Available Balance
EXPENSES				
Program Management and Administration	107.9	86.1	71.4	21.8
Master Cooperative Agreements	12.0	3.3	2.7	8.7
Real Estate including ROW Acq	21.0	14.2	14.2	6.8
Special Programs	0.3	-	-	0.3
Procurement/Vehicles	60.0	-	-	60.0
Maintenance and Operations Facility Land	22.0	22.0	22.0	-
Construction - IFS	19.8	19.8	19.8	-
Construction - Pasadena to Azusa segment	328.9	328.9	186.3	-
Construction - Azusa to Montclair segment	950.0	-	-	950.0
Construction - M&O	46.0	44.0	18.4	2.0
Construction - Parking Structures	44.2	44.2	8.8	-
MTA Project Costs	64.0	64.0	14.3	-
Contingency	27.4	-	-	27.4
Project Reserve	15.5	-	-	15.5
Total Project	1,719.0	626.5	357.9	1,092.5