

# I-5 Improvements in North County

## Community Meetings Project Update

July 26 & 27, 2017



**Metro**



# Agenda

- Open House
- Project Presentation
- Questions and Answers
- Open House with Board Stations



# Background

- HOV (Carpool lanes + extension of truck lanes)
- Environmental Document approved in September 2009
- Environmental Reevaluation for HOT lanes approved in May 2013
- Final Design started in June 2016 and completion 2018
- Additional noise monitoring in February 2017
- Environmental Reevaluation of HOV Project in Summer 2018
- Construction to start in Spring/Summer of 2019



# Project Purpose and Need

**The purpose** – To relieve congestion in the Santa Clarita Valley

**The need** for the improvements:

- Projected increase in Santa Clarita Valley population
- Increase goods movement from the Port of Los Angeles and Port of Long Beach
- Traffic volumes will continue to increase



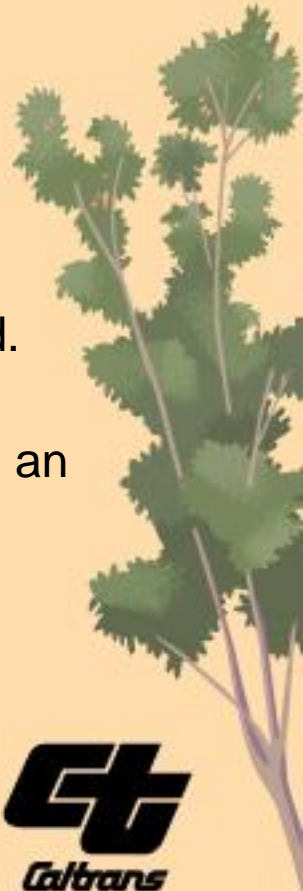
# Project Improvements

- Addition of 14-miles HOV/carpool lanes along the median in both directions
- Extension of northbound truck lane to Calgrove Blvd
- Adding another southbound truck lane from Calgrove Blvd to SR-14
- Addition of Auxiliary lanes between on-ramp and subsequent off-ramps

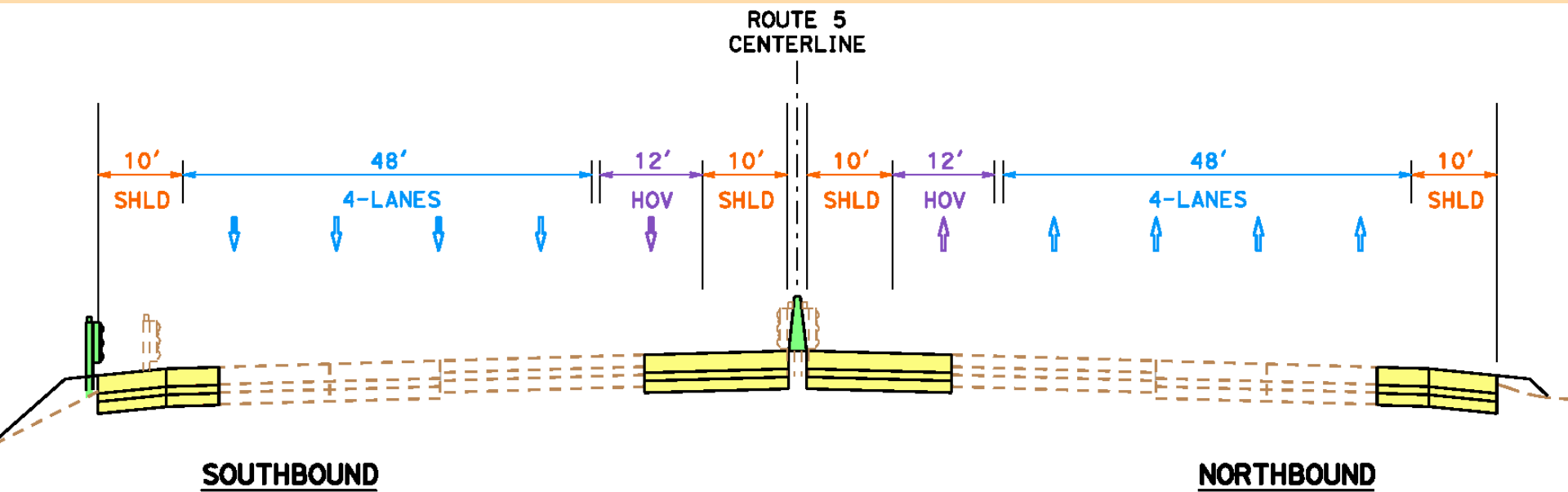


# Community Benefits

- Shorter travel time
  - Additional 14 miles of high occupancy (HOV)/carpool lanes in each direction
- Improves safety and capacity
  - Add an additional truck lane southbound from Calgrove Blvd. to SR-14
  - Addition of auxiliary lanes (outside lanes extending between an on-ramp and a subsequent off-ramp)

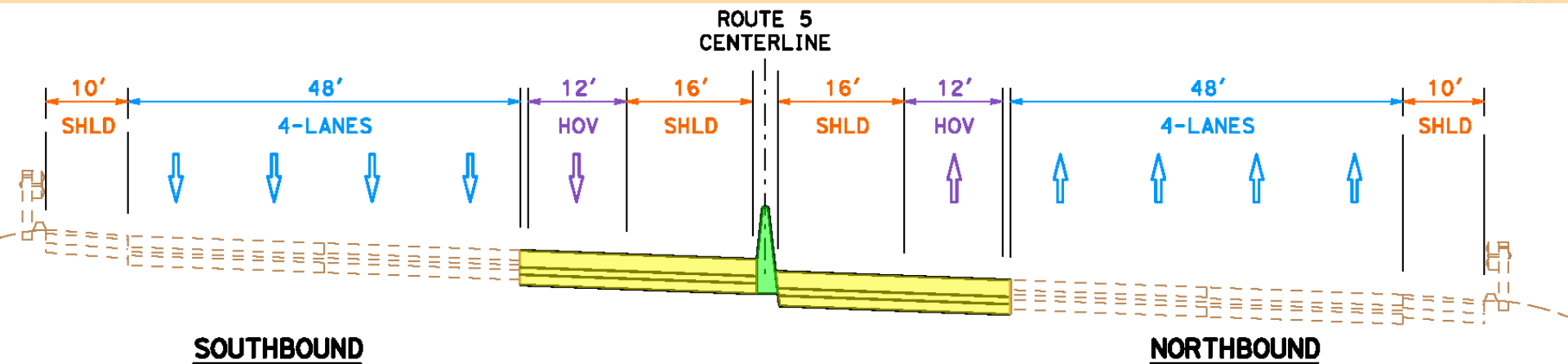


# Typical Section: South of Pico/Lyons Existing Narrow Median



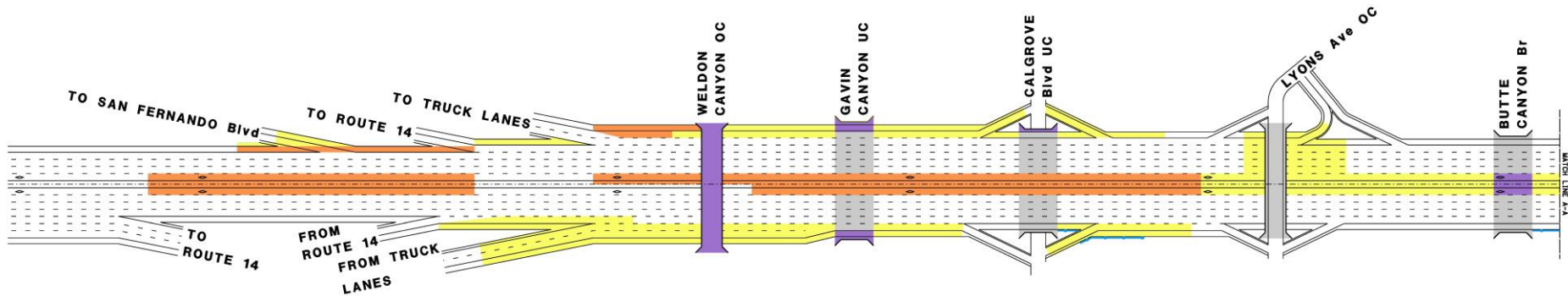
# Typical Section: North of Pico/Lyons

## Existing Wide Median



# Overview of Improvements

## from SR-14 to Butte Canyon

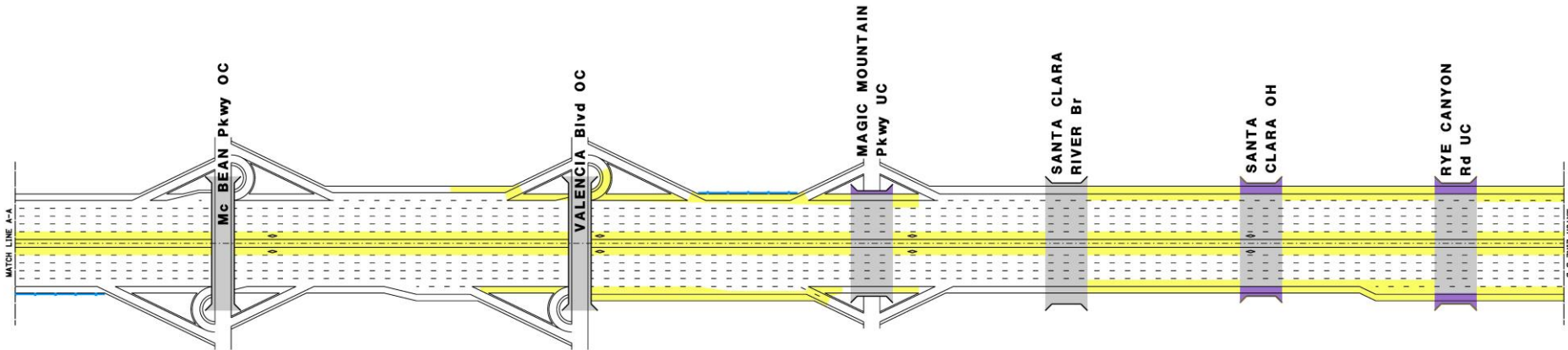


**LEGEND:**

- PREVIOUS PROJECT
- WIDENING
- BRIDGE WORK
- RETAINING WALL
- SOUND WALL



# Overview of Improvements from McBean Pkwy to Rye Canyon Rd

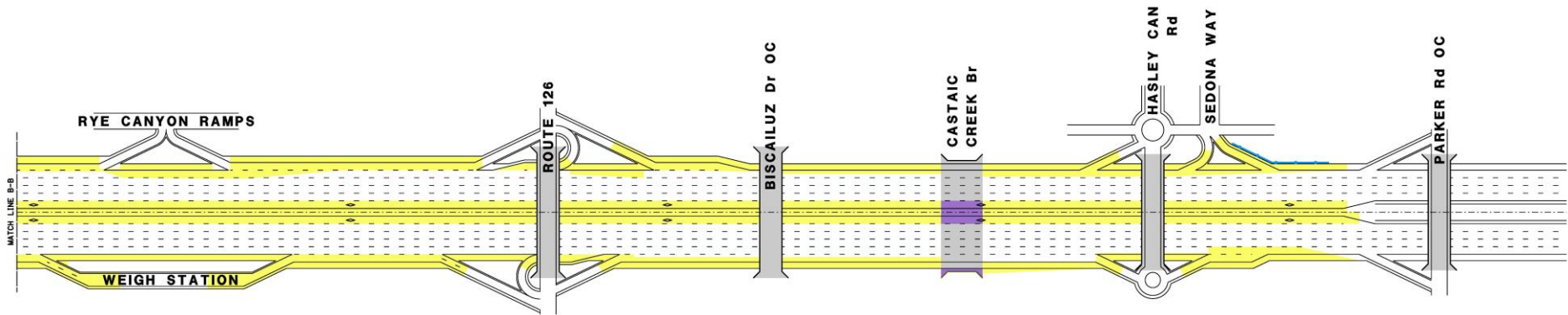


**LEGEND:**

- PREVIOUS PROJECT
- WIDENING
- BRIDGE WORK
- RETAINING WALL
- SOUND WALL



# Overview of Improvements from Rye Canyon Ramps to Parker Rd



**LEGEND:**

- PREVIOUS PROJECT
- WIDENING
- BRIDGE WORK
- RETAINING WALL
- SOUND WALL



# I-5 at Rye Canyon Rd (Existing)



# I-5 at Rye Canyon Rd (Proposed)



# I-5 at McBean Pkwy

## Looking North (Existing)



# I-5 at McBean Pkwy

## Looking North (Proposed)



# Sound Wall - Criteria

- The area along a freeway project qualifies for noise abatement consideration when the predicted noise levels as a result of the project approaches (within 1 decibel) or exceeds the established state and federal threshold level of 67 dBA.



# Sound Wall - Criteria

- **Feasible** (from an acoustic standpoint)
  - At least 5 dBA future noise reduction
- **Reasonable** (from a cost standpoint)
  - Allowance of \$55,000 per benefitted dwelling in 2009 Environmental Document
  - New Noise Monitoring with cost allowance of \$92,000 per benefitted dwelling
  - Actual construction cost must be less than cost allowance
- Sound Walls must be both **Reasonable & Feasible**

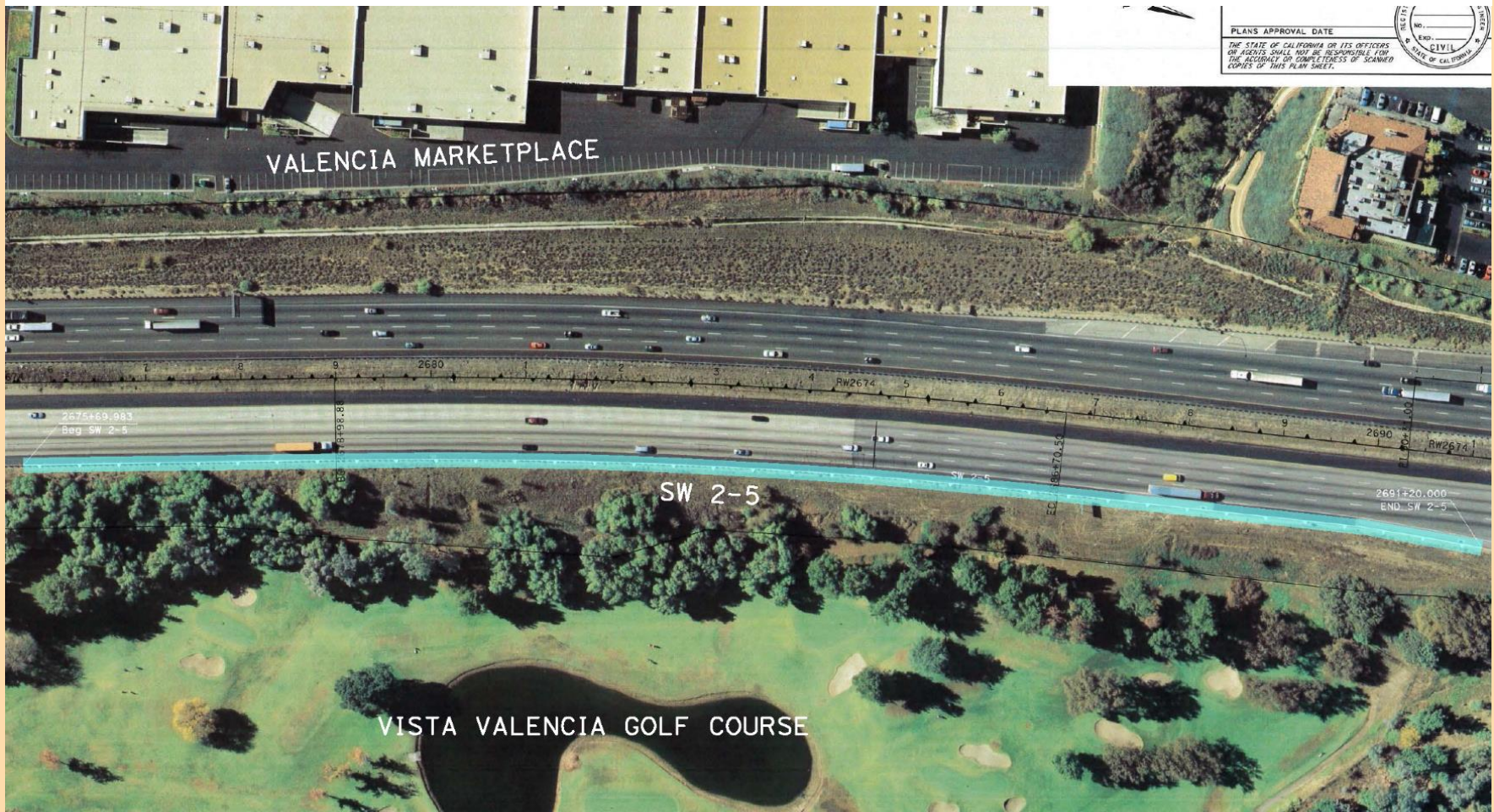


# Sound Wall Locations – Calgrove



# Sound Wall Locations – I5 Freeway

## Sound Wall – Between McBean Pkwy and Pico/Lyons



# Sound Wall Locations – I5 Freeway

## Sound Wall Between Magic Mountain Pkwy and Valencia Blvd



# Sound Wall Locations – Castaic



# Sound Wall Type - Existing



Existing Slump Stone Sound Wall along the Hasley Canyon SB on-ramp



**Metro**

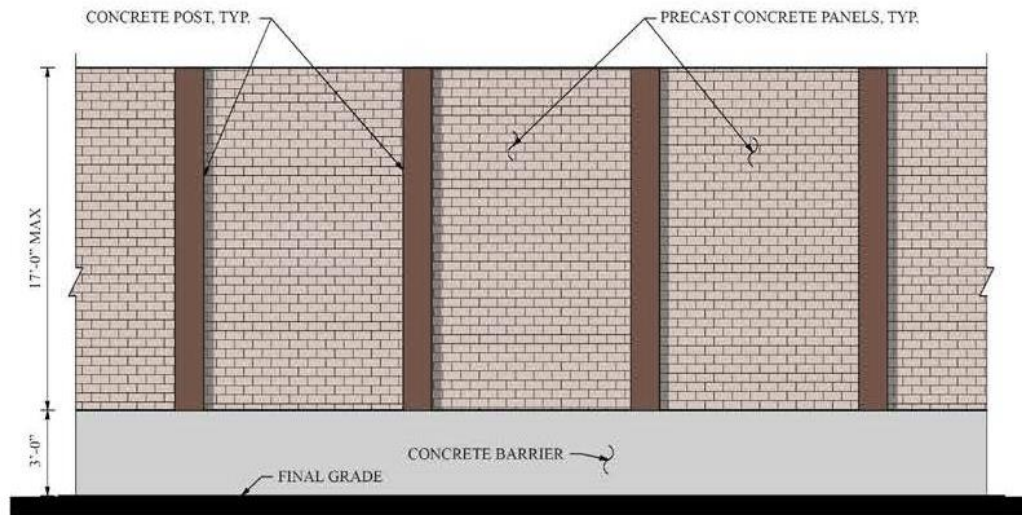


# New Sound Wall Aesthetics



*SOUNDWALL AESTHETIC TREATMENT  
FUTURE CONDITION*

# New Sound Wall Aesthetics – Post and Panel



**“POST AND PANEL” SOUNDWALL**

ELEVATION

1/4" = 1'-0"

# Barrier Aesthetics - Existing



# Retaining Walls Aesthetics - Existing

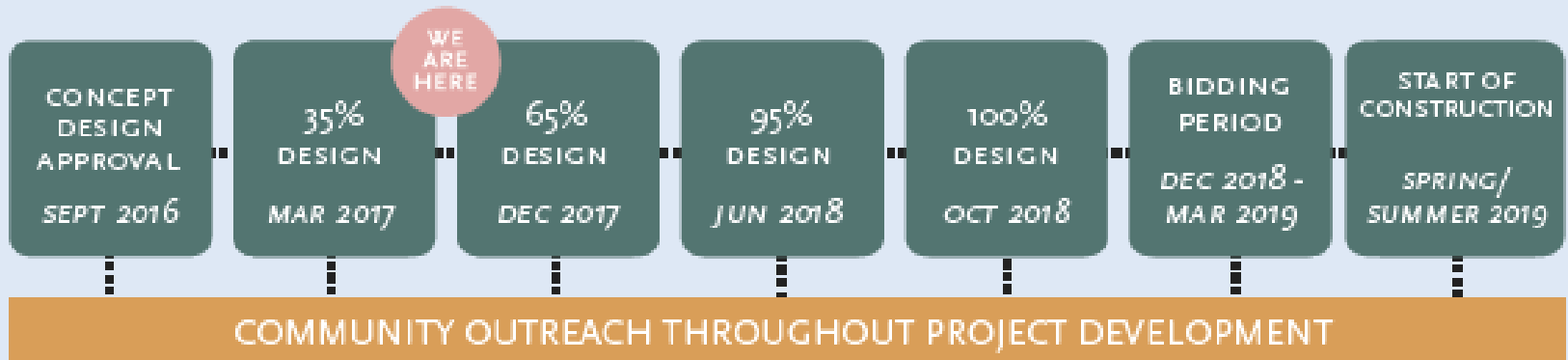


# Other Projects along I-5 in North County

- Caltrans I-5 Roadway Rehabilitation Project in North Los Angeles County/Santa Clarita – Summer 2017 through 2019: <http://tinyurl.com/I5RoadwayRehabNorthCounty>
- Relocation of Rye Canyon SB ramps – in the Environmental process



# Milestone Schedule



# Next Steps

- December 2017 – 65% Design
- Continue to keep community involved



# Keep in Touch



Mr. Ayokunle (Kunle) Ogunrinde  
Project Manager  
Metro  
One Gateway Plaza, MS 99-13-36  
Los Angeles, CA 90012



[I5enhancements@metro.net](mailto:I5enhancements@metro.net)



213.922.2772



[Metro.net/projects/i-5-enhancements](http://Metro.net/projects/i-5-enhancements)



# Questions and Answers

