
APPENDIX D HISTORICAL AERIAL PHOTOGRAPHS



GS VASK

I-17

2-28-68

2885
SERIAL NO. 101111
L.F.L.
101111



GS VASK

1-39

2-28-63



AL. F. L.
011mm

SER NO.

256

256

256

256

256

256

256

256

256

256

256

256

256

256

256

256

256

256

256

256

256

256

256

256

256

256

256

256

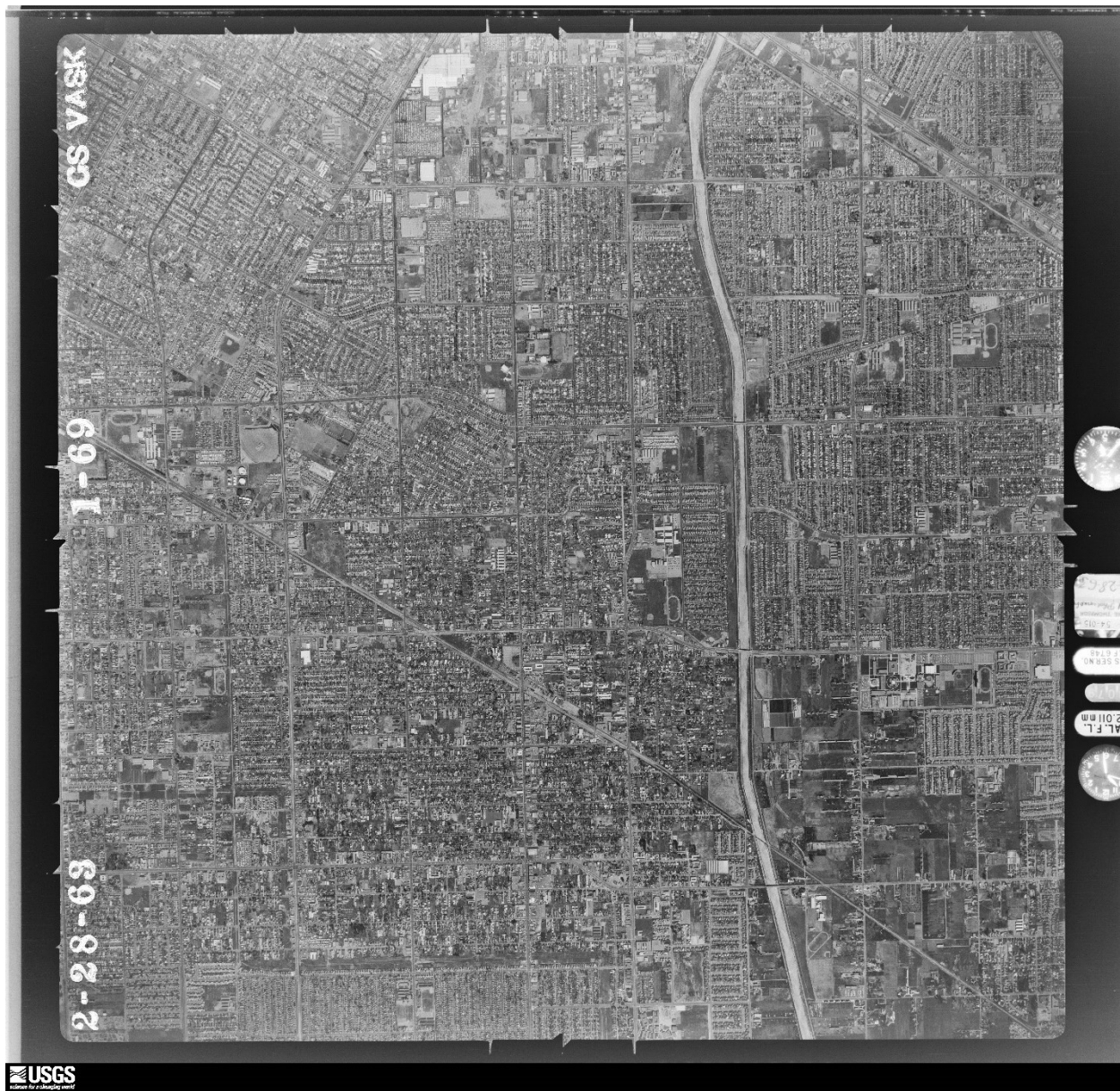
256

256

256

256

256



CS VASK

1-69

2-28-69

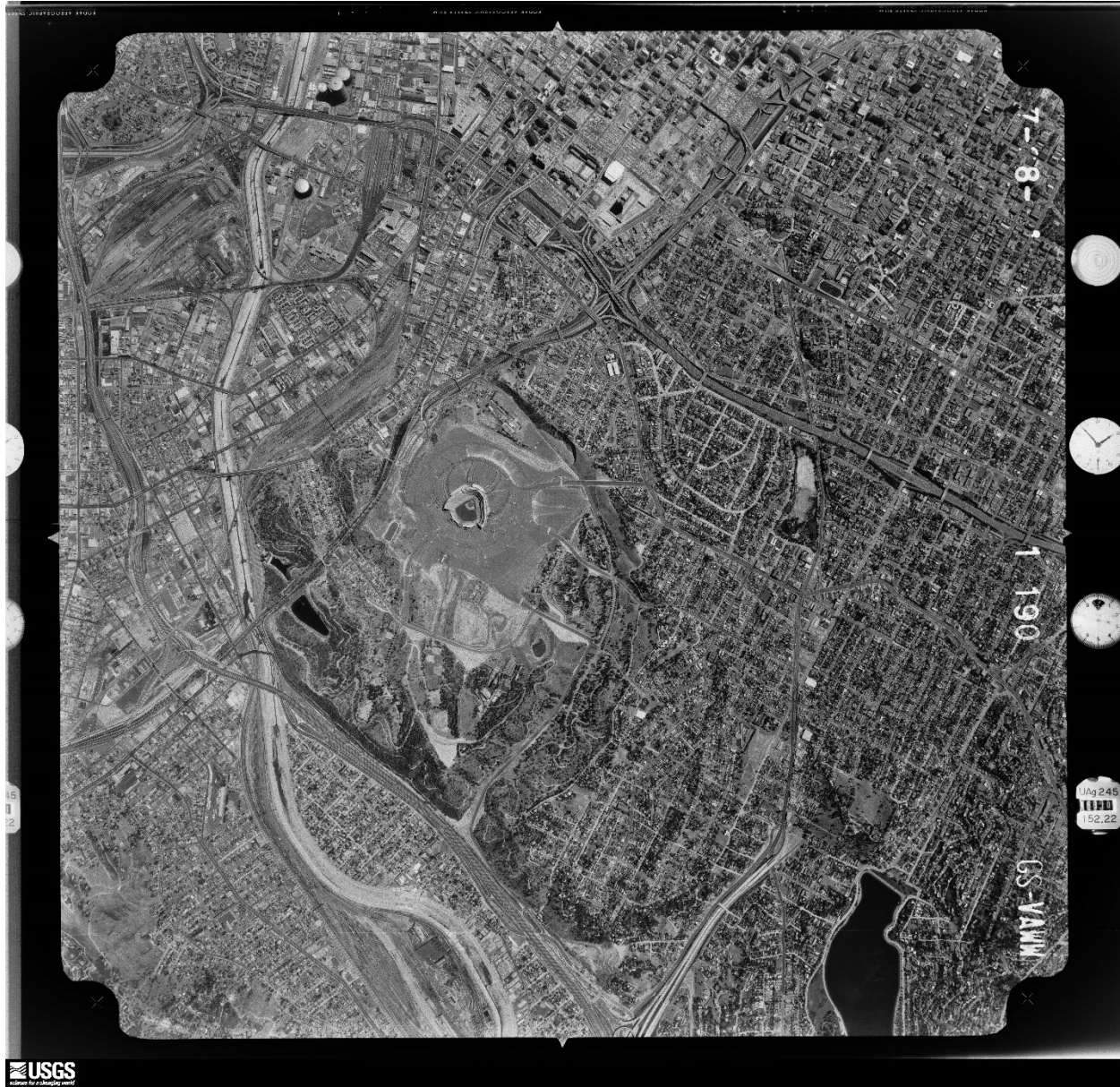
AL.F.L.
2.011mm
STATE NO.
3888



2-28-63

1-92

GS VASK





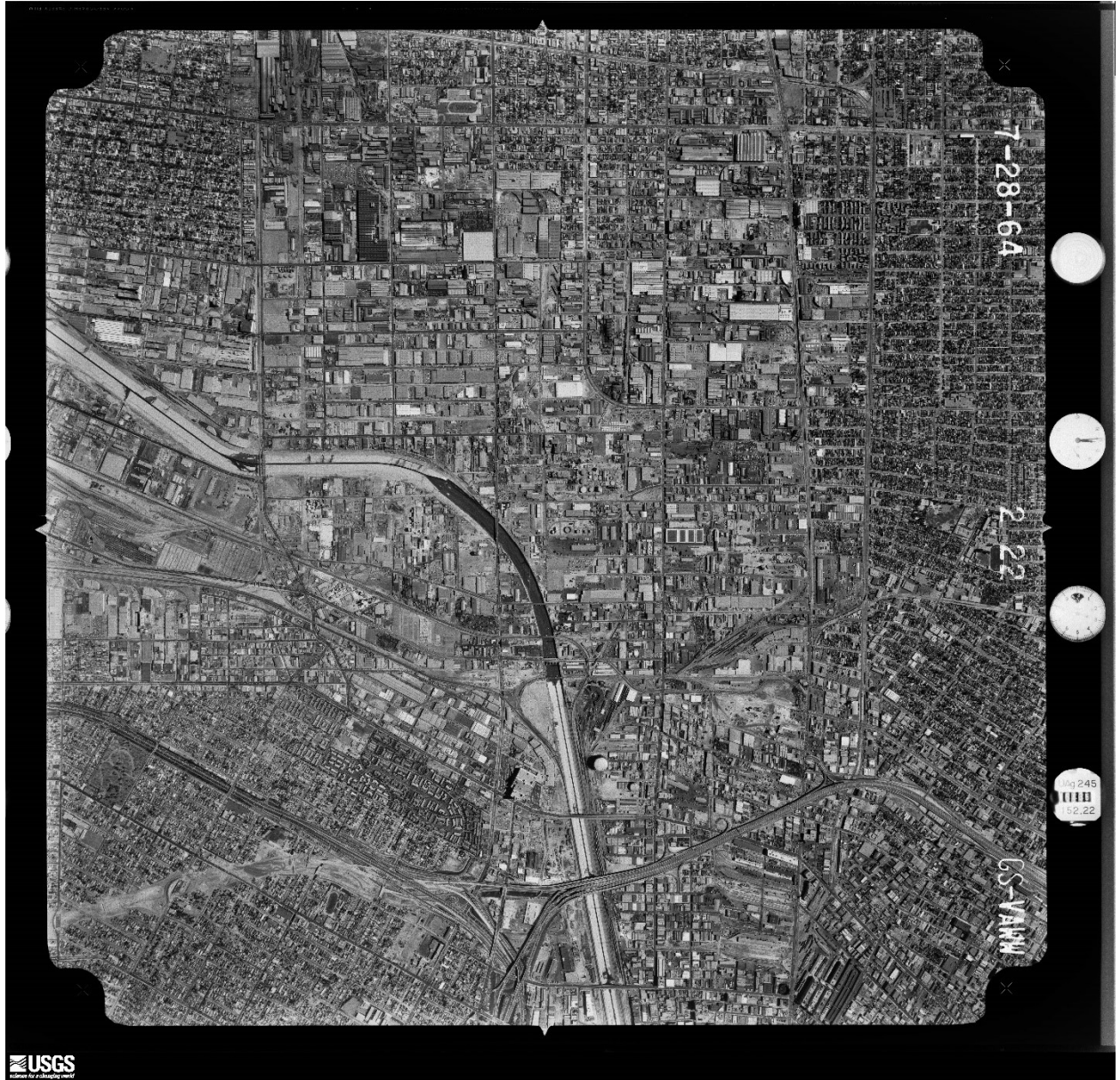
CS-YAKW

1 217

7-28-64



Ug 245
152, 22

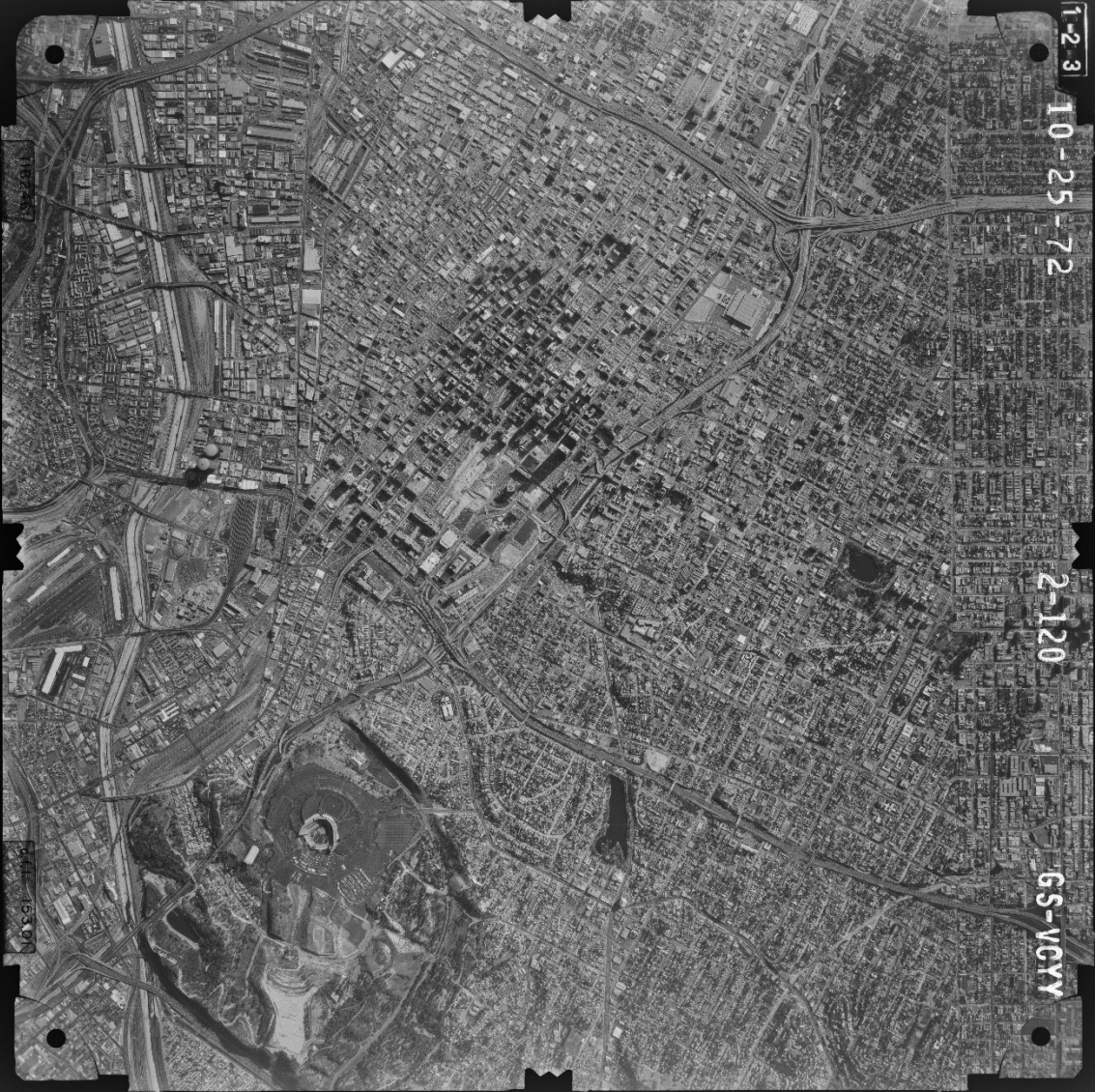


7-28-64

2-22

CS-VARW





1-2-3

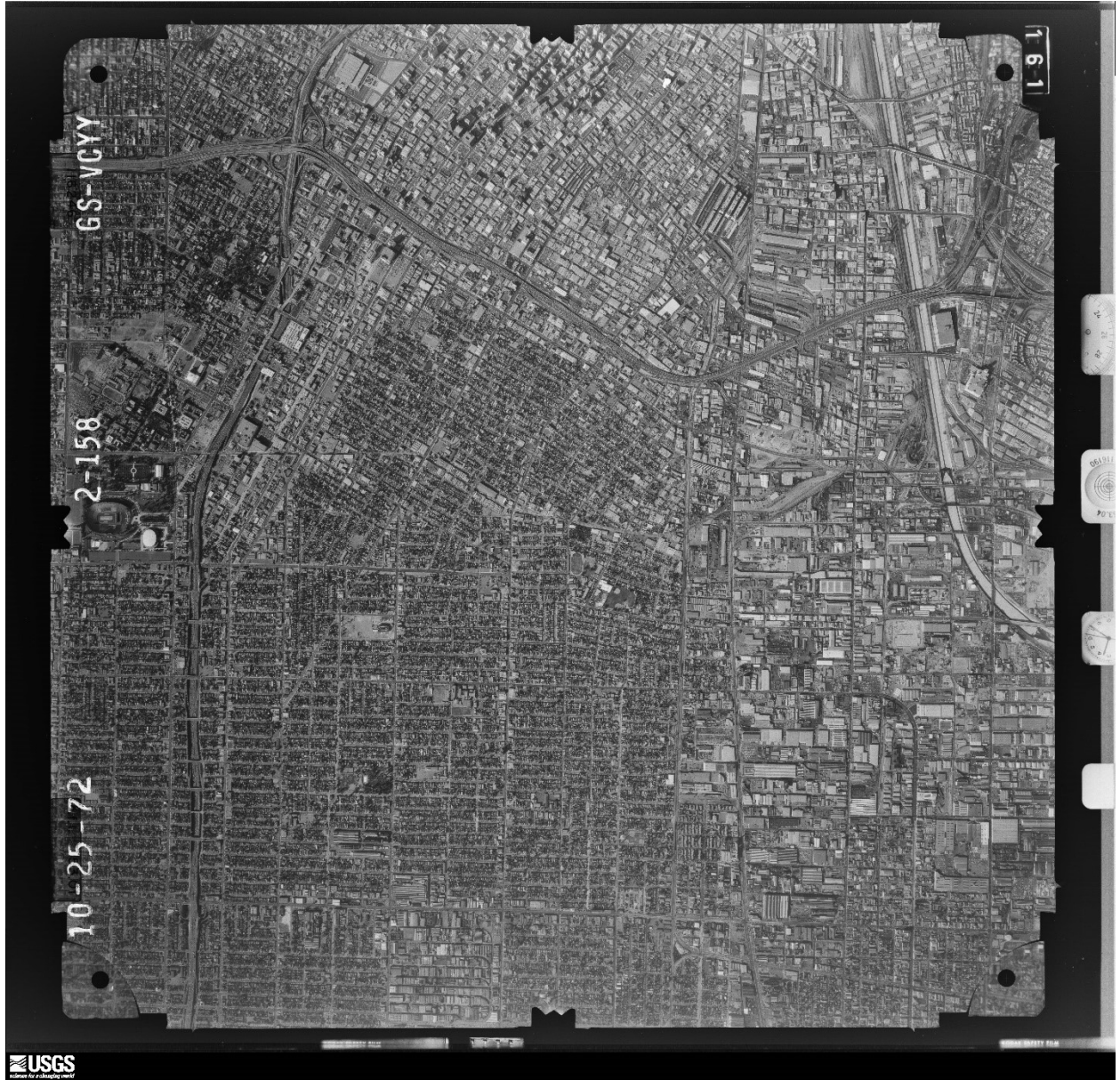
10-25-72

2-120

GS-VGYY

44-10307





GS-VCYY

2-158

10-25-72

161

USGS
FOR A CHANGING WORLD



SCALE: 1:50,000





GS-V0YY

3-12

10-30-72

0-14

10-30-72





GS-VCY Y

3-65

10-30-72

153-01

11824B

153.04
116130

067



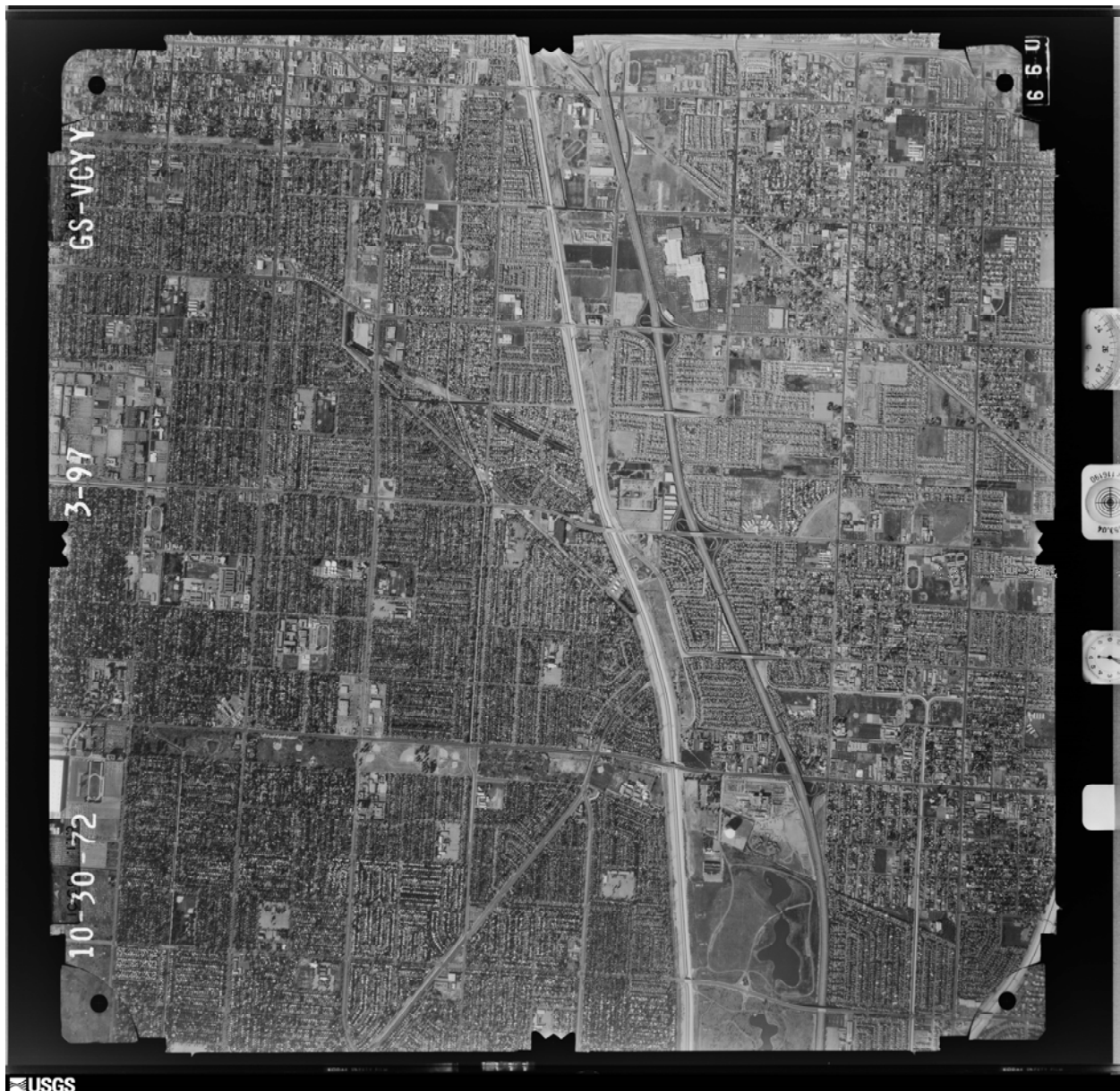
GS-VCYY

3-66

10-30-72

068





USGS



USGS



8-2-52

18-34

18-35

USGS

18-36

USGS

USGS

USGS



GS-VP

18-59

8-2-52

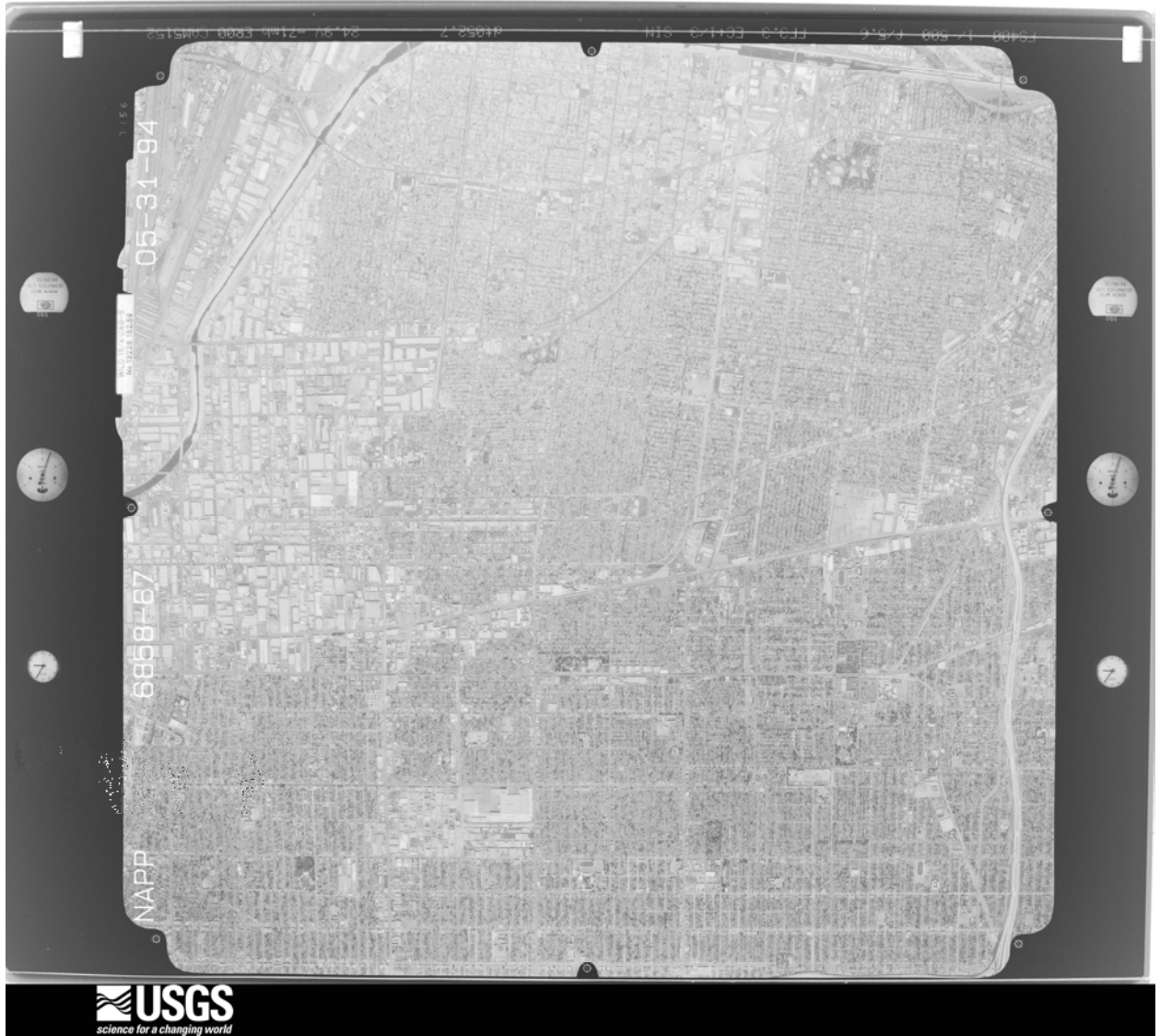
38-W-12RS-M840-12AF-15JUNE 48-1215-157,3-40000-PR38

37-W-12RS-M840-15JUNE 48-1215-157,3-40000-PR36





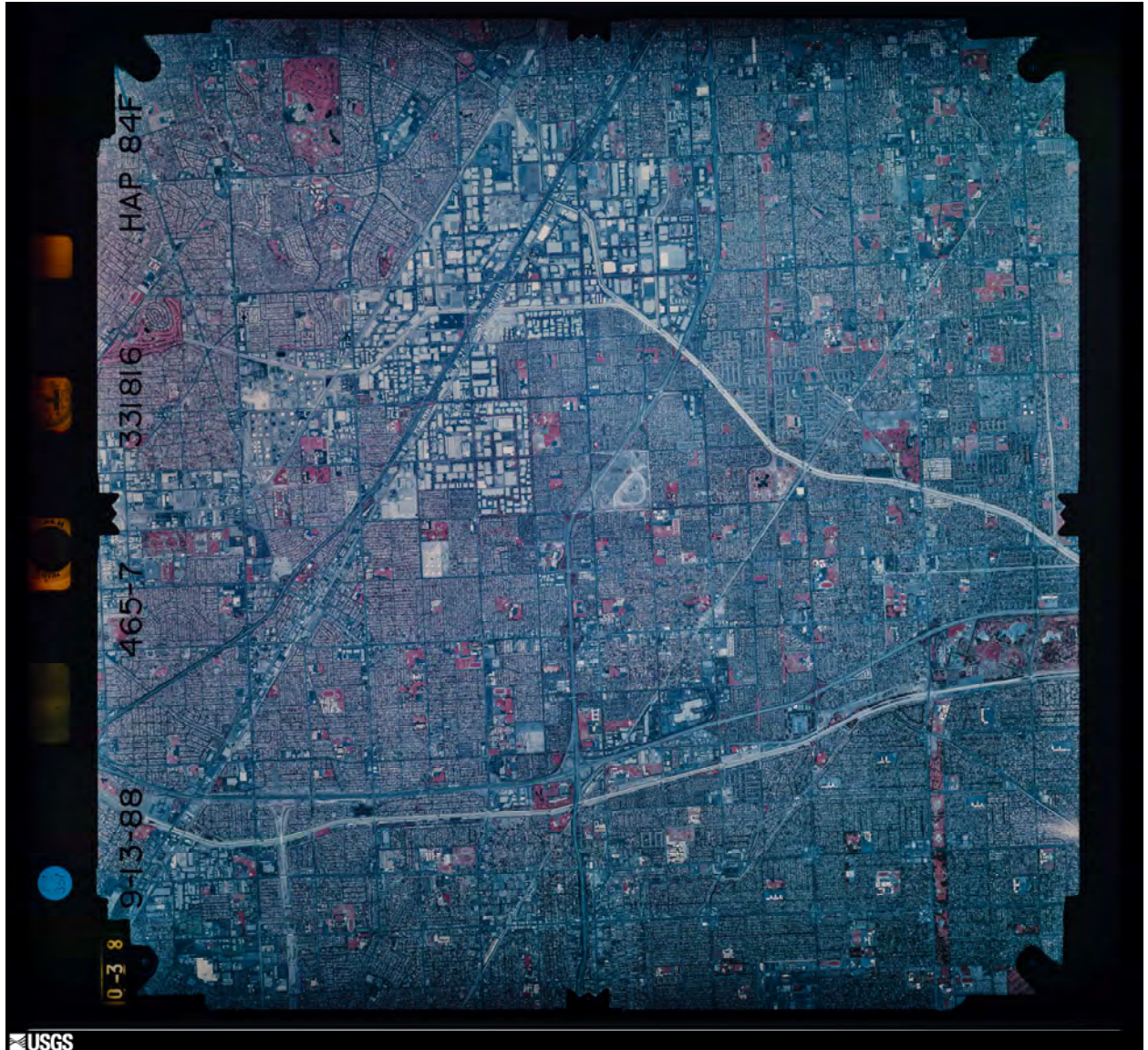
USGS
science for a changing world



USGS
science for a changing world



ES4888 1 450 6 25 6 F03 3 5041 2 31H 25 11 - 72mb 5300 1 045152



USGS



9-13-88

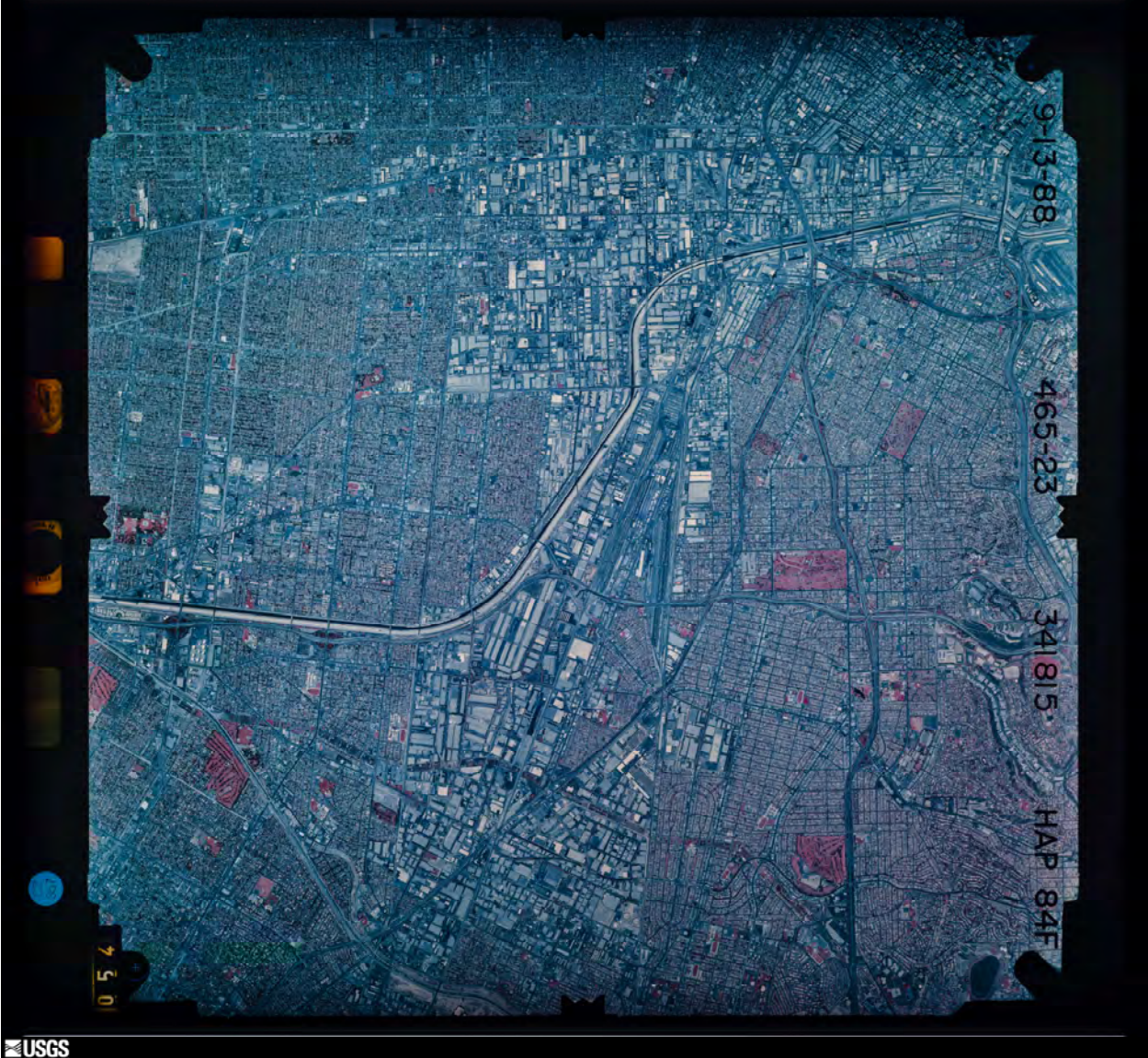
465-2

331815

HAP 84F

2 5 0

USGS



9-13-88

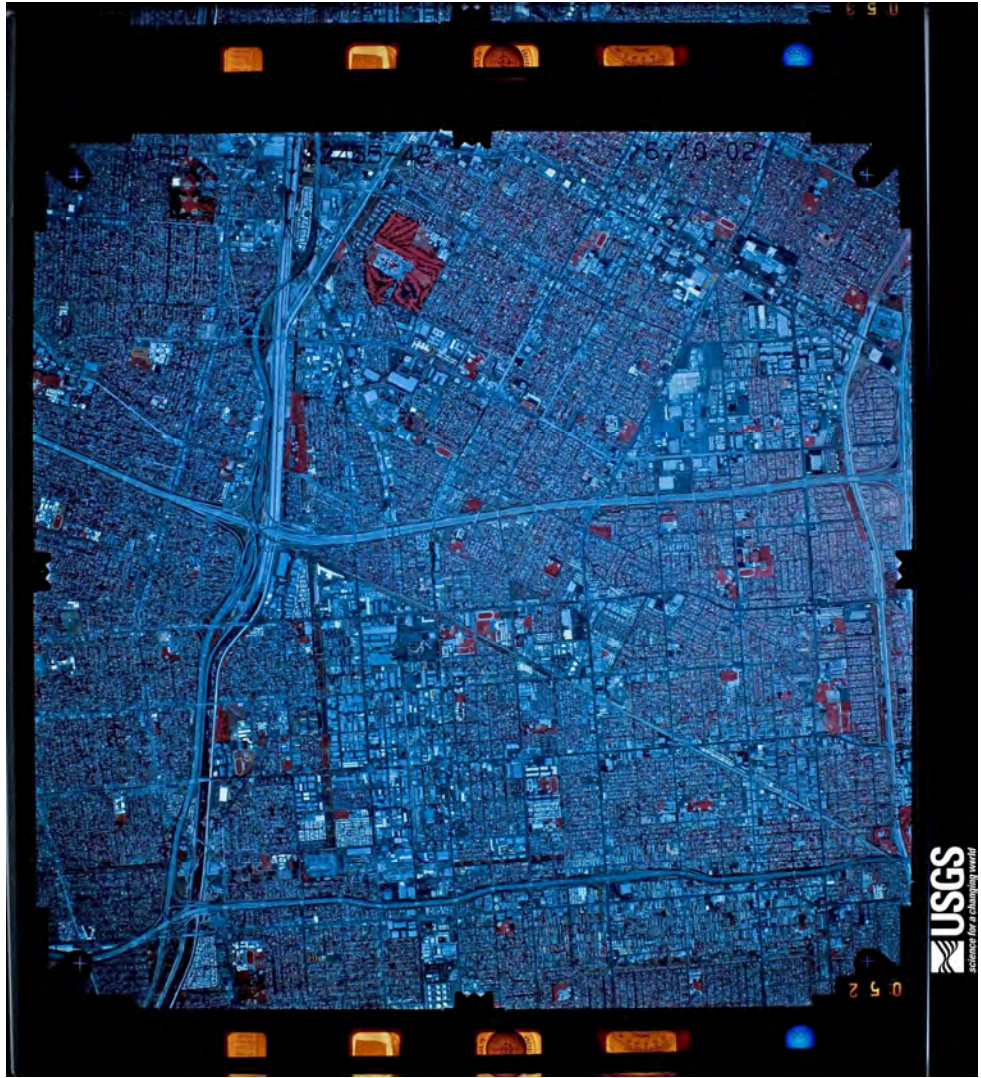
465-23

341815

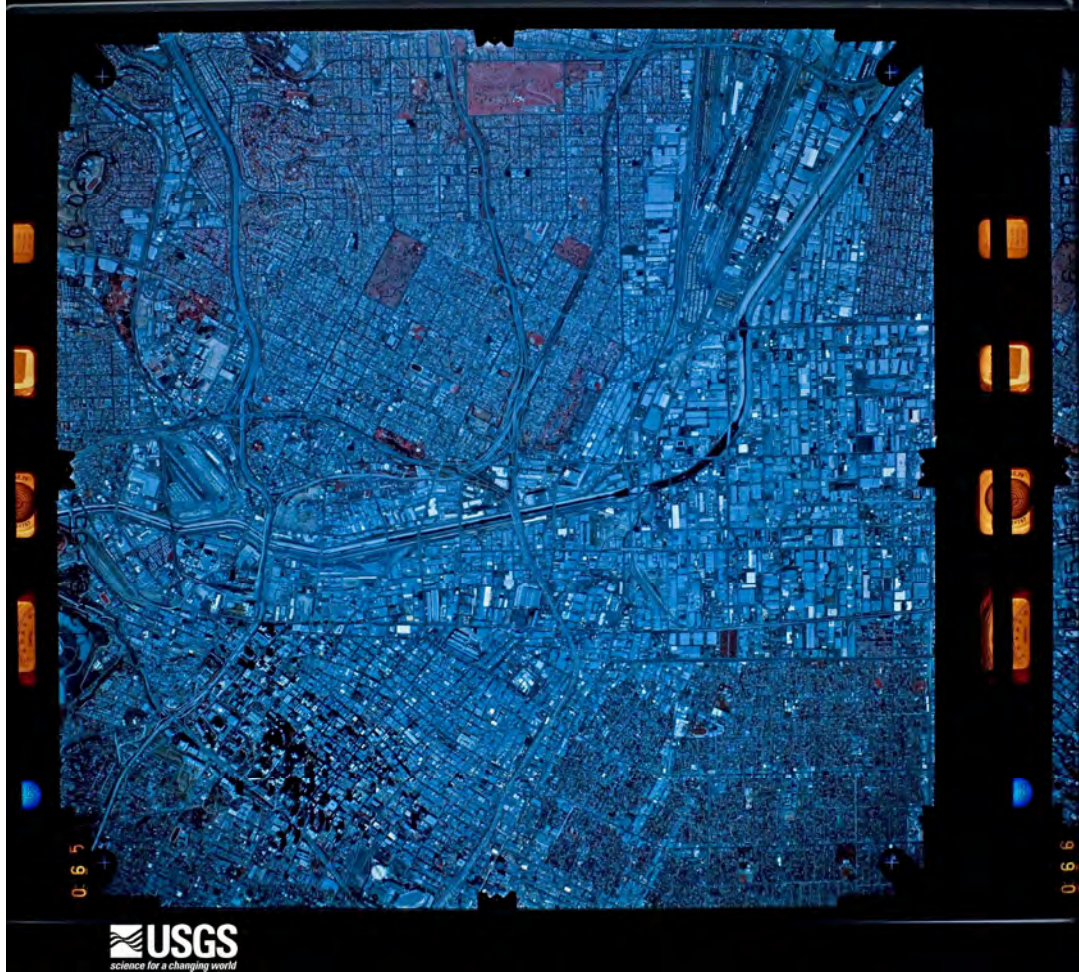
HAP 84F

7 5 0

USGS

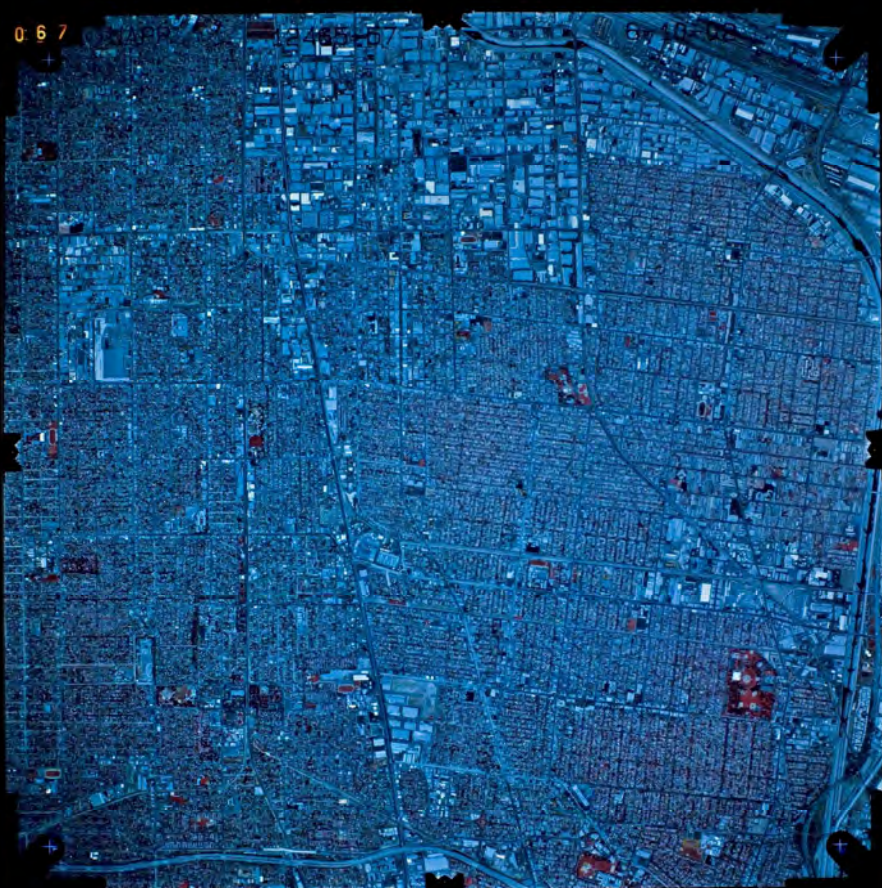


USGS
science for a changing world



USGS
From Earth to Sky

0 6 7



0 6 8

