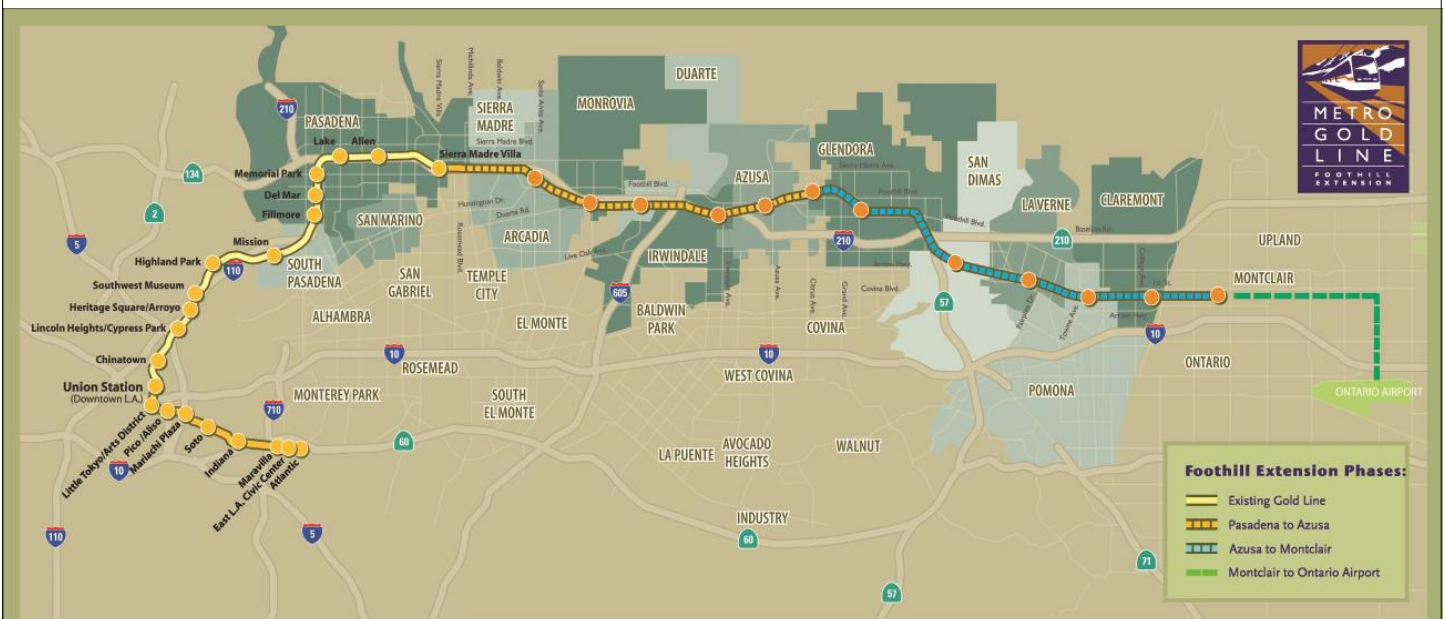


Metro Gold Line

Foothill Extension Project

Monthly Project Status Report

August 2014



Metro Gold Line

Connecting Los Angeles, the San Gabriel Valley and Inland Empire



TABLE OF CONTENTS

PHASE II FOOTHILL EXTENSION PROJECT STATUS

Project Description	3
Pasadena to Azusa Segment	4
Management Issues	4
Key Activities Completed This Period	5
Key Future Activities	6
Critical Path Schedule	7
Critical Path Float Trend	8
Alignment Contract Status	9
Alignment Construction Progress This Period	11
Facility Construction Progress This Period	12
Alignment Construction Progress Next Period	13
Facility Construction Progress Next Period	14
Alignment Construction Images	15
Alignment Change Management Log	17
Parking Facilities and Enhancements Contract Status	21
Parking Facilities and Enhancements Construction Images	23
Parking Facilities and Enhancements Change Management Log	25
Azusa to Montclair Segment	26
Financial Status	27

FOOTHILL EXTENSION PROJECT DESCRIPTION

The Authority's mandate is to plan, design and construct a 37-mile light rail link between Downtown Los Angeles and Claremont. In addition, the San Bernardino Associated Governments (SANBAG) has requested that planning be extended one mile inside San Bernardino County to the City of Montclair and then to Ontario Airport.

The Metro Gold Line Phase II (Foothill Extension) corridor includes the cities of Pasadena, Arcadia, Monrovia, Duarte, Irwindale, Azusa, Glendora, San Dimas, La Verne, Pomona, Claremont, and Montclair; and the counties of Los Angeles and San Bernardino (Figure 1). The Foothill Extension is estimated to cost approximately \$1.719 billion.

The Foothill Extension will be built in two segments to align effectively with projected cash flows and financial capacity constraints. The first segment is defined from the Sierra Madre Villa Station in Pasadena to the city of Azusa. Revenue service along this segment is planned for the year 2015. The second segment would include an extension from Azusa to the City of Montclair with revenue service projected for the year 2017 and the third segment will be comprised of an extension from Montclair to the Ontario Airport.

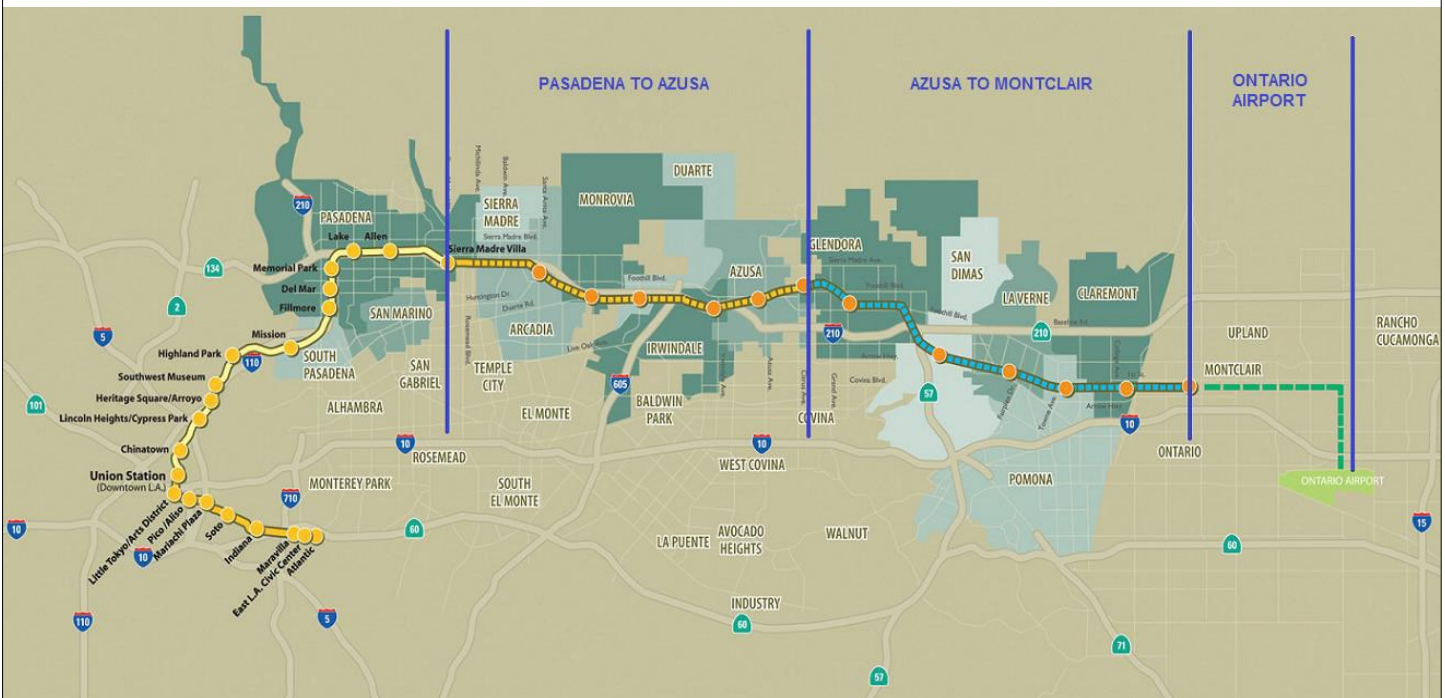


Figure 1: Metro Gold Line Foothill Extension Alignment



Pasadena to Azusa Segment

MANAGEMENT ISSUES

Metro Betterments

During the design process Metro staff have identified betterments that Metro staff would like to add to the project. Metro has provided a final disposition on all but a few items. Authority staff continues to work with Metro staff to resolve the remaining items.

TPSS Delivery Dates

The traction power substations (TPSS) provide equipment to transform utility power required for Light Rail Vehicle (LRV) propulsion, and then distribute that power to the LRVs via the overhead wires. Metro is responsible for purchasing the traction power substations. Currently, Metro's schedule indicates that the traction power substation delivery schedule is late. This is a major concern for the Authority as it has potential to impact the project schedule; however, staff is coordinating with Metro and FTC to ensure minimal impact to the project.



KEY ACTIVITIES COMPLETED THIS PERIOD

FTC reports the following SBE statistics for the month of May:

- Current SBE commitment: \$ 59,500,000
- SBE percent committed versus value of Project: 17.87%
- Overall Authority Project SBE goal: 16%

FTC reports the following approximate safety statistics to date:

- 908,434 total work hours performed by FTC, Mass Electric, and Subcontractors
- 12 recordable injuries reported
- 4 lost time injuries reported

Webcor reports the following DBE statistics for the month of July:

- Current DBE commitment: \$1,788,812
- DBE percent committed versus value of Project: 3.67%
- Overall Authority Project DBE goal: 2.3%

Webcor reports the following approximate safety statistics to date:

- 81,513 total work hours performed by Webcor and Subcontractors
- 0 recordable injuries reported
- 0 lost time injuries reported

Continued bridge work at Huntington

Completed bridge work at Foothill

Continued work at all stations - 87% complete (structural elements)

Continued construction of Phase 2 Mountain grade crossing

Completed construction of Virginia grade crossing

Continued construction of light rail mainline track - 79% complete

Continued trackwork at the Gold Line Operations Campus (Campus) - 66% complete

Continued interior/exterior assembly of Yard TPSS at the Campus

Continued OCS and Site Lighting Pole erection at the Campus and throughout the Alignment

Continued installation of train control cases/bungalows and associated equipment

Metal stud framing is 98% complete on all floors inside Campus buildings

Continued construction of Arcadia, Monrovia, Irwindale, and Azusa-Citrus Parking Structures

Authority continued reviewing design submittals for Azusa-Citrus and Irwindale structures

Continued to coordinate with contractor and City of Duarte to progress design of Duarte lot

KEY FUTURE ACTIVITIES

Continue discussions with corridor cities regarding the project

Continue management of the Alignment contract, which will include oversight of construction activities and preparation for start-up activities

Continue to meet with Intermodal Parking Facilities and Enhancements Project contractor, Webcor Builders regarding design of the Project

Continue installation of mainline OCS

Continue installation of train control cases/bungalows and associated equipment

Complete trackwork at the Campus

Complete construction of the Huntington bridge

Complete construction of all stations

Finish work at Mountain grade crossing

Finalize design for the following Parking Facilities: Azusa Citrus, Irwindale, and Duarte

Finalize the following property acquisitions:

- Arcadia:
 1. Parcel 13010/1311 (Indiana St.) – To be conveyed by the City of Arcadia.
 2. Parcel 1401a (Huntington Dr. Aerial Easement) – To be conveyed by the City of Arcadia.
 3. Parcel 1401b (Huntington Dr. Bridge Abutments) – To be conveyed by the City of Arcadia.
 4. Parcel 1403 (99 N. Second Av.) – Engineers are preparing legal description.
 5. Parcel 1308 (223 N. First Av.) – Expecting pre-judgment possession in September.
 6. Parcel 6009 (Huntington Dr. Bridge Abutments) – To be conveyed by the City of Arcadia.
 7. Parcel 6010 (Huntington Dr. Bridge Abutments) – To be conveyed by the City of Arcadia.
 8. Parcel 6011 (Huntington Dr. Bridge Abutments) – To be conveyed by the City of Arcadia.
- Monrovia:
 1. Parcel 1601 (Encino Av.) – To be conveyed by the City of Monrovia.
 2. Parcel 1903 (Monrovia Station) – To be conveyed by the City of Monrovia.
 3. Parcel 21A12 (3M Parking Lot) – Waiting for legal description/as-builts.
 4. Parcel 21A23 (Shamrock Trapezoid) – To be conveyed by the City of Monrovia.
- Duarte:
 1. Parcel 6041/6042 (1500 Duarte Rd) – In escrow. Ready to close.
- Irwindale:
 1. Parcel 3302a (MillerCoors easement for power utilities) - Negotiating.
- Azusa:
 1. Parcel 3501 (1220 W. Foothill Blvd.) – Engineers are preparing legal description.

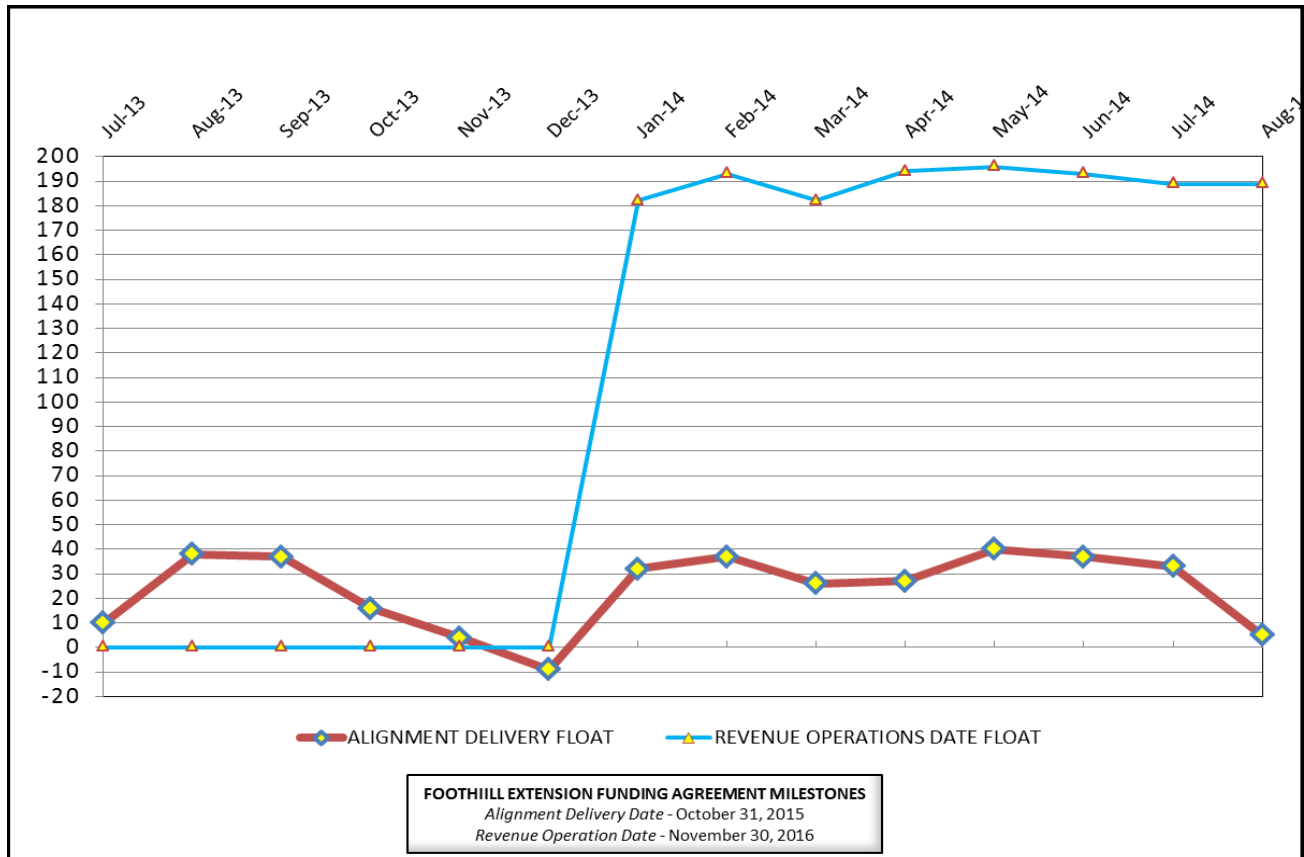


CRITICAL PATH SCHEDULE

Activity Name	OD	RD	AD	Start	Finish	Total Float	2012		2013		2014		2015		2016	
							Q2	Q3	Q4	Q1	Q2	Q3	Q4	Q1	Q2	Q3
REVENUE OPERATIONS DATE - CRITICAL PATH																
LRV FABRICATION / DELIVER 15 VEHICLES	1353	428	728	17.Aug.12 07:00 A	16.Oct.15 15:00	229										
METRO - System Testing & Start-Up - Phase 2A	30	30	0	27.Oct.15 07:00	25.Nov.15 15:00	189										
METRO - Pre-Revenue Operations - Phase 2A	60	60	0	26.Nov.15 07:00	24.Jan.16 15:00	189										
METRO - Project Schedule Contingency (5 Mo.)	122	122	0	25.Jan.16 07:00	25.May.16 15:00	189										
Phase 2A - Revenue Operations Date (ROD)	0	0	0		25.May.16 15:00*	189										
ALIGNMENT DELIVERY DATE - CRITICAL PATH																
IRWINDALE STA PARKING STRUCTURE - DESIGN	150	11	339	29.Apr.13 07:00 A	29.Aug.14 15:00	53										
IRWINDALE PARKING STRUCTURE - COMMUNICATIONS INSTL / TEST	45	45	0	25.May.15 07:00	24.Jul.15 15:00	4										
IRWINDALE STA PARKING STRUCTURE - CONSTRUCTION	316	260	89	14.Apr.14 07:00 A	13.Aug.15 15:00	4										
SYSTEMS INTERGRATION TESTING	125	125	0	05.May.15 07:00	26.Oct.15 15:00	4										
C1135 - >>>SUBSTANTIAL COMPLETION - 1420 CD<<<	0	0	0		26.Oct.15 15:00*	5										
ALIGNMENT DELIVERY DATE - SECONDARY - CRITICAL PATH																
IJ/IB - INSTALL CASE (C1208) WIRE & TERMINATIONS	22	22	0	15.Aug.14 07:00	15.Sep.14 15:00	28										
IJ/IB - INSTALL CASE (C1318) WIRE & TERMINATIONS	20	20	0	16.Sep.14 07:00	13.Oct.14 15:00	28										
IJ/IB - INSTALL CASE (C1344) WIRE & TERMINATIONS	20	20	0	30.Sep.14 07:00	27.Oct.14 15:00	28										
IJ/IB - INSTALL CASE (C1065) WIRE & TERMINATIONS	22	22	0	01.Oct.14 07:00	30.Oct.14 15:00	28										
IJ/IB - INSTALL CASE (C985) WIRE & TERMINATIONS	22	22	0	15.Oct.14 07:00	13.Nov.14 15:00	28										
IJ/IB - INSTALL CASE (C840) WIRE & TERMINATIONS	22	22	0	29.Oct.14 07:00	27.Nov.14 15:00	28										
IJ/IB - INSTALL CASE (C867) WIRE & TERMINATIONS	22	22	0	30.Oct.14 07:00	28.Nov.14 15:00	28										
IJ/IB - TEST CASE (C867)	5	5	0	01.Dec.14 07:00	05.Dec.14 15:00	28										
INTERLOCK PULL SIGNAL CABLE ('1' to '2')	20	20	0	08.Dec.14 07:00	02.Jan.15 15:00	28										
INTERLOCK PULL SIGNAL CABLE ('2' to '3')	20	20	0	05.Jan.15 07:00	30.Jan.15 15:00	28										
INTERLOCK TEST SIGNAL CABLE ('6' to '7')	21	21	0	02.Feb.15 07:00	02.Mar.15 15:00	28										
INTERLOCK TEST SIGNAL CABLE ('5' to '6')	21	21	0	03.Mar.15 07:00	31.Mar.15 15:00	28										
ALIGNMENT DELIVERY DATE - TERTIARY CRITICAL PATH																
ALAMEDA STATION - ELECTRICAL/MECHANICAL/FINISHES	160	160	19	21.Jul.14 07:00 A	26.Mar.15 15:00	31										



CRITICAL PATH FLOAT TREND



Revenue Operations Date Critical Path - (189 Calendar Days)

The Irwindale Parking Structure, which is the primary critical path for the Alignment Delivery, is also the primary critical path for the Revenue Operations Date (ROD). Upon achieving Substantial Completion on the C1135 Contract, the critical path for meeting ROD will continue through the Metro Systems Testing & Startup, which will then continue through Pre-Revenue Testing and five month schedule contingency. The secondary critical path to achieve the ROD milestone continues through the Metro Light Rail Vehicle Procurement and is twelve (12) days off of the critical path. The current forecast for the acceptance of the 15th of 78 vehicles remains at October 16, 2015. The anticipated ROD date is May 21, 2016. However, Metro is forecasting a March 2016 Revenue Operations Date.

Alignment Delivery Date Critical Path - (5 Calendar Days / 4 Work Days)

The Irwindale Parking Structure, which is currently being constructed by Webcor continues to be the primary critical path. Upon reaching the completion of the elevator installation, FTC will be granted access to complete the communications installation at the Irwindale Parking Structure. The critical path continues through systems integration testing and upon completion, FTC will achieve Substantial Completion and turn-over to Metro for Pre-Revenue Testing.

Other elements of construction work, which are in progress and near critical are TPSS #5 (Business Center) and #7 (Virginia) Installation & Testing, Segments 1 & 4 Train Control Equipment Installations, Huntington Dr bridge delivery, Segments 2 & 4 track installation, and Segments 3 & 4 OCS installations. Facility work, which is near critical includes Citrus Parking Structure and the Maintenance & Operations Campus.

Project Float

The project float for the Revenue Operations Date remains at 189 days. The critical activities on this path are on schedule to meet the Target Revenue Operations Date of November 2016. The Alignment Delivery Date float value decreased 28 days this period. The Alignment Delivery Date is currently 5 days ahead of the October 31, 2015 deadline.



Description: Alignment Design / Build

Status: August 15, 2014

Contract No.: C1135

Contractor: Foothill Transit Constructors (Kiewit-Parsons J.V.)

Progress Completed This Period

Design

- Submit AFC Design - Irwindale Ramp
- Submit AFC Design - Train Control Book of Plans Revisions
- Submit AFC Design - TPSS Revisions
- Submit AFC Design - Parking Structure Communications
- Submit AFC Design - Group 'E' Train Control - Zone 1
- Submit AFC Design - Station Finish Schedule
- Submit AFC Design - Citrus Panel Schedule Revisions

Construction

- See "Construction Progress This Period"

Activities Planned Next Period

Design

- Submit AFC Design - Business Center TPSS Drainage
-

Construction

- See "Construction Progress Next Period"

Areas of Concern

- **TPSS Delivery** - Metro has revised the delivery schedule for Traction Power Substations (TPSS). The revised delivery dates have placed the Design-Build Contractor's follow on work near critical and there is minimal float available to accommodate any delivery schedule slip. The Authority will continue to monitor the Metro TPSS fabrication progress to ensure deliveries are made per the revised Metro commitment. Approximately 7 of 10 traction power substations remain. Two substations (Yard & Irwindale) are expected to be delivered by next period.

Areas of Concern (Continued)

- **Irwindale Parking Communications** - The C1150 Design-Build Contractor is currently behind schedule to complete the structure by March 2015. As a result, the C1135 Design-Build Contractor will potentially be delayed accesses to the facility to begin the communications installation work, which will have an impact on the completion of Phase 1 systems integration testing. The Authority will evaluate the C1150 Design-Build Contractor's mitigation plan to recover lost time due to SCE shoring and pump station re-design delays. After evaluation of the plan, the Authority will review potential options to minimize the potential delay.



Description: Alignment Design / Build

Status: August 15, 2014

Contract No.: C1135

Contractor: Foothill Transit Constructors (Kiewit-Parsons J.V.)

Cost Summary:

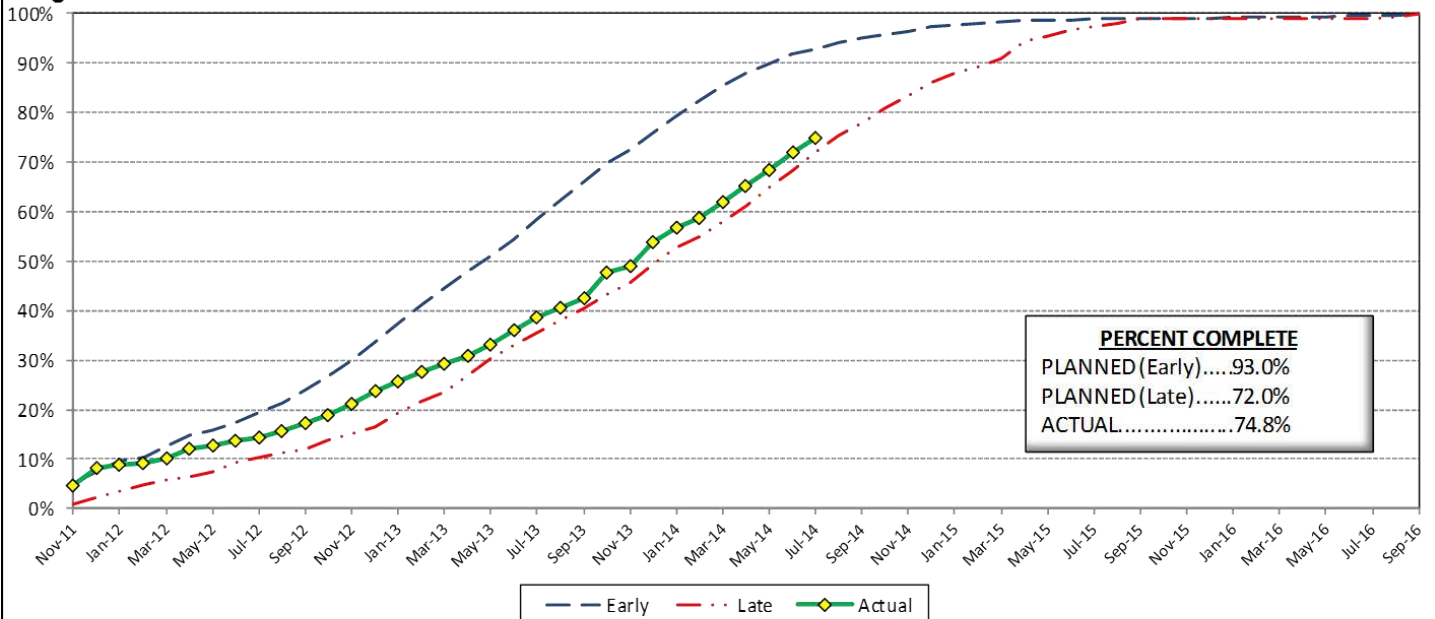
	Million(s)
CONTRACT	
Contract Award Value:	485.9
Executed Change Orders:	14.9
Current Contract Value:	500.7
Potential Change Orders:	2.1
Current Forecast:	502.8
Eamed Value/Actual Cost	364.0
AUTHORIZATION FOR EXPENDITURE	
Budget	507.9
Commitment	500.7
Balance	5.1

Cost Assessment:

This period the Contract forecast increased \$195 Thousand. The major increase were due to PCO 027.01 - *M&O / 3M Fence Revisions*, PCO 084 - *M&O Service Vehicle Pathways*, PCO 086 - *Santa Anita Avenue Bridge Artwork*. The net increase this period was offset by cost reductions, which were due to PCO 068.01 - *M&O Canopy Solar*, PCO 085 - *Joseph TPSS Power Feed Credit*, and the deletion of PCO 083 - *M&O HVAC Betterments*.

The Design-Build Contractor has eamed 364.0 Million and is currently 74.8% complete. The progress is currently 18.1% behind the early planned curve, which is due to Segment 2 & 4 track, Segment 1, 2, 3 OCS, and train control installation progress.

Progress Curve



Schedule Summary:

Contract Award:	07/27/11
Interim Notice to Proceed (INTP) :	11/03/11
Original Contract Duration:	1,780 Calendar Days
Current Contract Duration:	1,780 Calendar Days
Elapsed Time from NTP:	1,016 Calendar Days

Contract Milestones

Milestones	Description	Original Contract	Current Contract	Forecast	Variance
1	Substantial Completion	09/23/15	09/23/15	10/26/15	(33)
2	Punchlist Complete	06/19/16	06/19/16	07/22/16	(33)
3	Final Completion	09/17/16	09/17/16	10/20/16	(33)
4	Access - IFS Br.	12/15/12	12/15/12	12/15/2012 A	0
5	Test Track Complete	03/27/15	03/27/15	02/07/15	48
6	Colorado Br. Demo Complete	02/01/12	02/01/12	6/15/2012 A	(135)

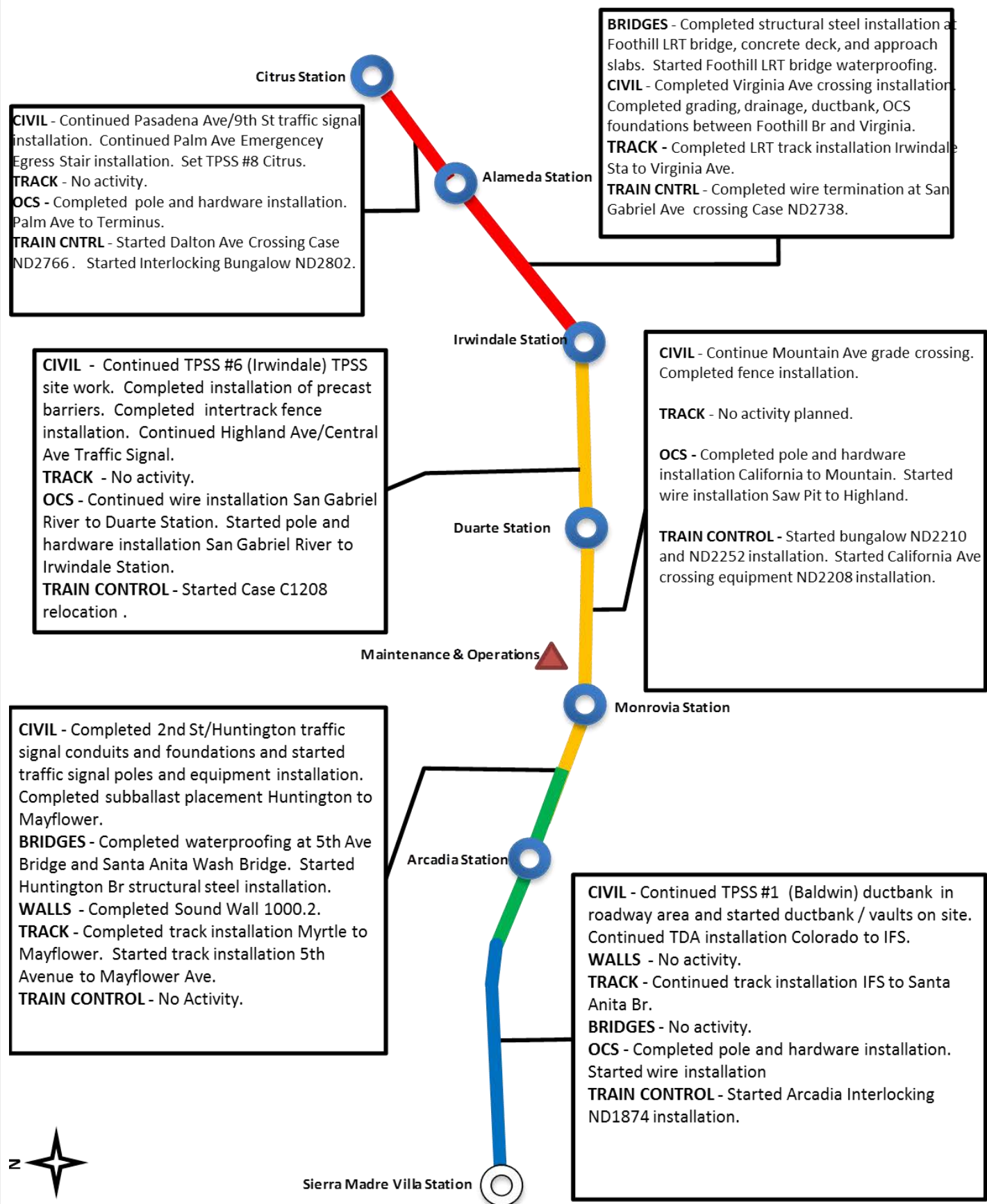
Schedule Assessment:

With the progress continuing to trend at the rate of the late progress curve, activities in all Segments continue to approach near critical. The Design-Build Contractor continues to meet the requisite use of resources to meet the critical elements of the schedule. At this time, the primary activities, which are critical or near critical by Segment are as follows: Segment 1 - OCS Installation, Segment 2 - Track Installation and Huntington Bridge Installation, Segment 3 - Duarte Station communications bungalow fabrication and M&O yard lead, Segment 4 - LRT track and OCS Installation.

The Test Track Completion is forecast to be available on February 7, 2015, which is 48 days ahead of the target date.



ALIGNMENT CONSTRUCTION PROGRESS THIS PERIOD





FACILITY CONSTRUCTION PROGRESS THIS PERIOD

Citrus Ave Station

STATION - Completed canopy structural steel installation. Installed precast foundations for electrical/communications bungalow.
PARKING - Completed shotcrete placement for permanent shoring walls. Completed installation of underground water tank. Started excavation and installation of structure footings. Installed elevator casing.

STATION - Completed canopy structural steel installation. Installed precast foundations for electrical/communications bungalow.

PARKING - No activity planned.

Alameda Station

STATION - Completed platform stairs & ramps. Installed precast foundations for electrical/communications bungalow.

PARKING - Completed shoring installation for SCE pole and site excavation. Completed pump station excavation, invert and lift 1 concrete placement.

Irwindale Station

STATION - Completed canopy metal roofing. Installed precast foundations for electrical/communications bungalow.

PARKING - No activity planned.

CIVIL - Continued yard lead grading and started duct bank installation.

WALLS - No activity.

TRACK - Continued installation of south track turnouts and double crossover. Started installation of insulated joints and impedance bonds.

STRUCTURES - *M&O Building* completed structural steel installation. Continued exterior CMU walls and metal stud framing. Completed installation of stair No.2. Completed interior CMU walls. Started MEP rough-in installations. Started drywall installation. *Car Wash* - Started CMU walls. *Cleaning Platform* - Completed CMU Walls, completed structural steel primer/paint, started MEP installations. *Material Storage* - completed fire protection, started exterior metal panel installation. *MOW Building* - Start MEP rough-in.

OCS - No activity.

Maintenance & Operations

Duarte Station

STATION - Completed underplatform conduit installation. Completed deck waterproofing installation. Completed platform dielectric installation. Started platform paver installation. Installed precast foundations for electrical/communications bungalow.

PARKING - Completed Level 3 deck. Completed Level 1 barrier walls. Started Level 2 barrier walls.

Monrovia Station

Arcadia Station

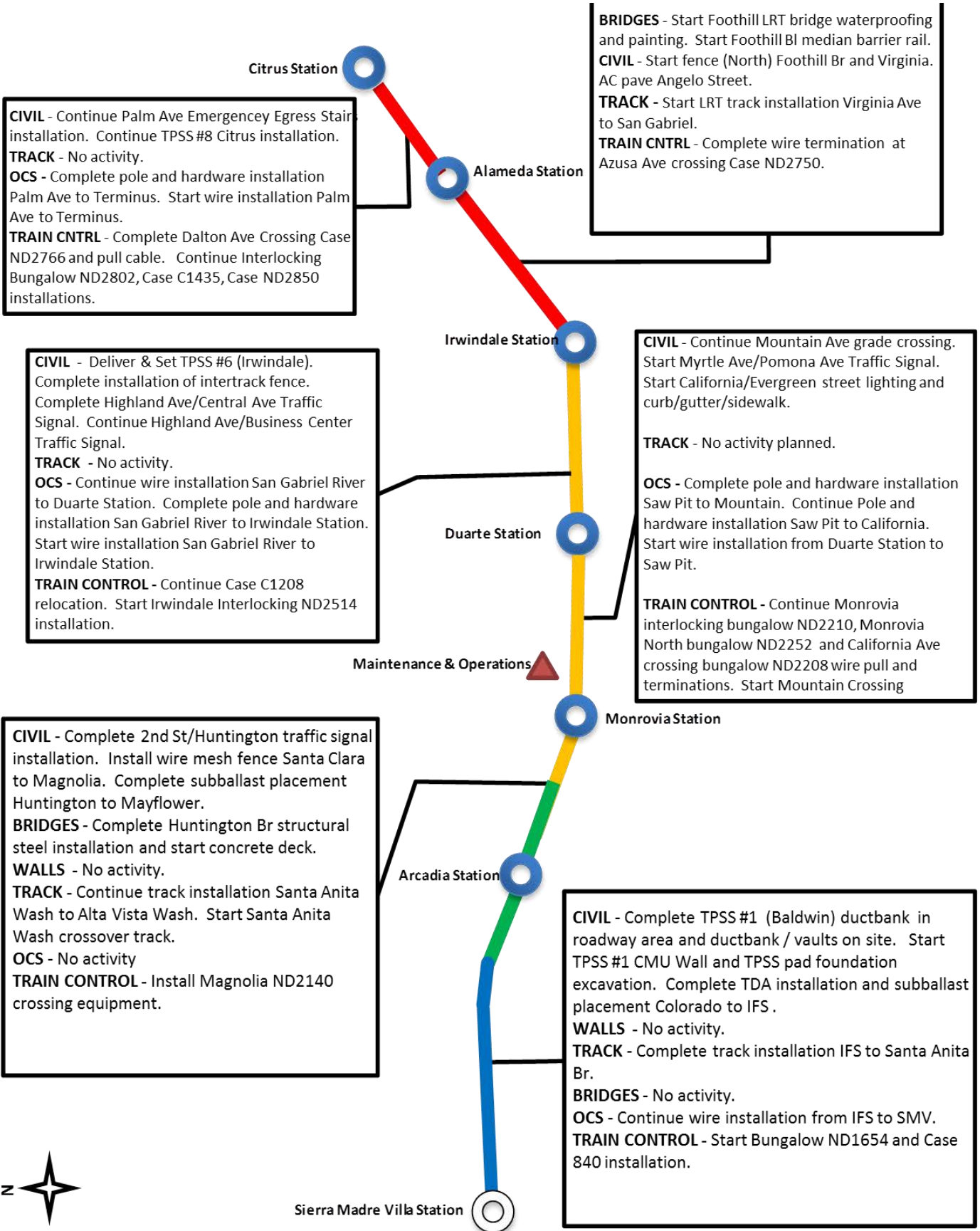
STATION - Completed deck waterproofing installation. Started canopy metal roofing installation. Installed precast foundations for electrical/communications bungalow.

PARKING - Completed water lines. Completed CMU wall installation at electrical & elevator rooms. Completed elevator hoistway steel installation. Completed stair #1 & #2 installation. Started installation of electrical equipment. Started plaza light pole foundations. Completed plaza concrete paving and sidewalks.





ALIGNMENT CONSTRUCTION PROGRESS NEXT PERIOD





FACILITY CONSTRUCTION PROGRESS NEXT PERIOD

Citrus Ave Station

STATION - Start electrical /communications bungalow installation.
PARKING - Complete excavation and installation of structure footings. Install elevator casing. Start level 1 columns and shear walls. Start ramp CMU wall installation. Start underground electrical conduits and drainage pipes.

STATION - Complete canopy structural steel painting. Start canopy metal roofing installation.
PARKING - No activity planned.

Alameda Station

STATION - Start canopy structural steel installation. Start electrical/communications bungalow installation.
PARKING - Complete shoring installation for SCE pole and site excavation. Complete pump station lift 2 & 3 walls concrete placement. Start pump station lift 4. Complete MSE Wall leveling pad and lift 1 blocks.

Irwindale Station

STATION - Start electrical/communications bungalow installation. Start platform lighting installation.
PARKING - No activity planned.

CIVIL - Continue yard lead grading and complete duct bank installation. Complete 3M south lot paving. Start 3M north lot demo.
WALLS - Complete Wall 'B' Footing and start CMU block wall. Start Wall 'D'.
TRACK - Continue installation of south track turnouts and double crossover. Continue installation of insulated joints and impedance bonds.
STRUCTURES - *M&O Building* Complete exterior CMU walls and metal stud framing. Continue MEP rough-in installations. Continue drywall installation. Continue exterior insulation. Install Wheel Truing Machine and car hoist equipment. Start roofing installation. *Car Wash* - Continue CMU walls. *Cleaning Platform* - Complete MEP installations, start canopy roofing. *Material Storage* - Complete exterior metal panels, Complete MEP installation. *MOW Building* - Start exterior metal panels.
OCS - No activity planned.

Duarte Station

STATION - Complete platform paver installation. Start electrical/communications bungalow installation.
PARKING - Complete Level 3 deck post tensioning. Complete Level 2 & 3 barrier walls. Start installation of electrical equipment at electrical & elevator rooms. Start elevator structural steel hoistway installation. Install water line. Start storm drain installation.

Maintenance & Operations

Monrovia Station

STATION - Complete canopy metal roofing installation. Start platform paver installation..
PARKING - Complete installation of electrical equipment at electrical & elevator rooms. Start level 1 lighting wiring and fixture installation. Complete concrete pour at Stair 1 & 2. Complete plaza stage structural concrete. Install plaza sign footing. Start plaza pavers. Install pedestrian light poles. Complete AC paving at surface lot area.

Arcadia Station



ALIGNMENT CONSTRUCTION IMAGES

Segment 1: OCS Wire Installation



Segment 2: Huntington Bridge Decking

Segment 3: Mountain Ave - Rough Grading



ALIGNMENT CONSTRUCTION IMAGES (CONTINUED)



Segment 4: Irwindale TPSS Installation

Operations Campus: Main Roof -
Materials Stocked



Operations Campus: MOW Storage Building -
Metal Siding



Change Management Log

Date: 9/4/2014

Page: 1 of 4

Project: C1135 Alignment - FTC Contract #: C1135

Original Contract Amount:	\$485,867,000				
Approved Change Orders:	\$15,582,614	3.21%	Pending Change Orders:	\$0	0.00%
Current Contract Total:	\$501,449,614		Pending Contract Total:	\$501,449,614	3.21%

Change Orders

Number	Change Management	Title	Initiated Date	Approved Date	Outstanding Days	Time Extension	Amount
EXECUTED Change Orders							
001.00	000.00	Interim NTP	11/3/2011	11/3/2011	0		\$0
002.00	013.00	Colorado Bridge Haz Mat	5/17/2012	5/18/2012	1		\$121,382
002.01	013.01	Colorado Bridge HazMat - Final	9/5/2012	9/7/2012	2		\$13,164
003.00	001.00	Sound Wall Deletion - Duarte Road	7/12/2012	7/18/2012	6		(\$74,707)
004.00	018.00	Revise Block Design - CBD Calc	8/23/2012	8/29/2012	6		\$3,986
004.01	018.01	Revise Block Design - CBD Calc - 2	9/5/2013	9/11/2013	6		\$0
005.00	023.00	Wayside Signal Aspect Revision	9/6/2012	9/7/2012	1		\$26,072
005.01	023.01	Wayside Signal "Call On" Function	10/30/2013	11/1/2013	2		\$75,169
006.00	040.00	Arcadia Frieze, Bench-Artist Design	9/6/2012	9/10/2012	4		\$13,683
006.01	040.01	Arcadia Frieze, Bench-Construction	3/7/2013	3/12/2013	5		\$155,894
007.00	019.02	Soils Testing Abutments & Fdns	9/14/2012	9/18/2012	4		\$44,993
008.00	041.00	Unknown Utilities RFCN 005 006 008	9/14/2012	9/18/2012	4		\$132,450
009.00	038.00	Illuminate City Names @ Stations	9/18/2012	9/24/2012	6		\$184,657
010.00	046.00	SGRB - Lead Based Paint Remediation	9/21/2012	9/24/2012	3		\$244,536
011.00	004.00	Station Architectural Changes	10/11/2012	10/12/2012	1		\$443,950
012.00	003.01	Systems and Testing for Added TPSS	12/13/2012	12/14/2012	1		\$1,443,193
013.00	005.02	IDIQ Comm Contract (Rev 2)	12/14/2012	1/22/2013	39		\$698,259
014.00	060.00	Sewer Encasement Changes in Azusa	12/18/2012	1/24/2013	37		\$141,354
015.00	037.02	M&O - Materials Storage Revisions	12/26/2012	1/15/2013	20		\$62,862
015.01	037.03	M&O Storage Shelving Revisions	9/16/2013	9/19/2013	3		\$20,380
016.00	002.00	Relocation of Access Road to 3M Fac	12/26/2012	1/16/2013	21		\$53,814
017.00	025.00	3 Electrical Casings for ALW	2/27/2013	3/1/2013	2		\$219,033
018.00	073.00	Hazardous Abatement at Bridges	1/15/2013	2/6/2013	22		\$1,081,803
019.00	054.00	City of Hope Conduits	1/11/2013	1/22/2013	11		\$34,313
020.00	059.00	Citrus TPSS Transformer Pad Changes	2/6/2013	2/7/2013	1		\$34,536
021.00	075.00	Demo & Replace Palm Dr. Roadway	2/7/2013	2/14/2013	7		\$90,365
022.00	077.00	M&O Differing Site Conditions; Pt 1	2/13/2013	2/15/2013	2		\$66,360
022.01	093.00	M and O DSC T and M Work Part 2	3/8/2013	3/12/2013	4		\$66,625
022.02	103.00	M and O DSC Part 3	3/27/2013	3/28/2013	1		\$35,211
022.03	115.00	DSC at M and O Part 4	5/3/2013	5/7/2013	4		\$5,706
023.00	089.00	Contaminated Soil Abatement	2/26/2013	2/27/2013	1		\$422,068
024.00	068.00	Monrovia Sound Wall Panel Change	2/26/2013	2/28/2013	2		(\$24,150)
025.00	052.00	Santa Anita Trail Detour	3/8/2013	3/12/2013	4		\$27,691
026.00	070.00	Block Type Change at M&O Building	3/26/2013	3/26/2013	0		\$35,016
027.00	065.00	M&O IT Changes-Duct Banks/Conduits	3/26/2013	3/26/2013	0		\$88,650
027.01	065.01	M&O IT Changes - Power to WAP	9/4/2013	9/6/2013	2		\$73,049
027.02	065.02	M&O IT Changes - Remaining Work	7/16/2014	7/17/2014	1		\$155,991
028.00	039.01	Delete Layover Building	4/11/2013	4/12/2013	1		(\$313,832)
029.00	095.00	8in Sanitary Sewer Line- Alameda Av	4/23/2013	4/25/2013	2		\$226,089
029.01	095.01	Alameda Sewer Line Revised Scope	11/22/2013	11/26/2013	4		(\$37,425)
030.00	102.00	M&O-Disconnect Switches, Insulators	4/23/2013	4/25/2013	2		\$67,817
031.00	110.00	Rmv Abandoned Utility Line @ Dalton	4/23/2013	4/25/2013	2		\$1,562
032.00	104.00	Highland Ave Abandoned CMP sleeves	5/1/2013	5/3/2013	2		\$15,005
033.00	114.00	Remove contaminated wood culvert	5/3/2013	5/7/2013	4		\$4,714
034.00	128.00	M&O Backup Power/Generator Changes	5/13/2013	5/21/2013	8		\$121,340



Change Management Log

Date: 9/4/2014

Page: 2 of 4

Project: C1135 Alignment - FTC Contract #: C1135

Change Orders

Number	Change Management	Title	Initiated Date	Approved Date	Outstanding Days	Time Extension	Amount
EXECUTED Change Orders							
035.00	083.00	M&O Vehicle Sanding System Changes	5/21/2013	5/24/2013	3		\$27,463
036.00	006.00	IFS Related Contract Changes	6/7/2013	6/11/2013	4		(\$263,111)
037.00	137.00	CTS Redesign	7/12/2013	7/16/2013	4		\$58,214
038.00	138.00	Segment 4 Safety Manager	7/12/2013	7/16/2013	4		\$157,274
038.01	138.01	Segment 4 Safety manager - Part 2	11/19/2013	11/21/2013	2		\$72,963
038.02	138.02	Segment 4 Safety Manager - Part 3	4/3/2014	4/7/2014	4		\$82,271
039.00	085.00	M&O Drainage System Enhancements	7/19/2013	8/13/2013	25		\$251,579
040.00	067.00	Station Paver Changes	7/23/2013	8/13/2013	21		\$728,340
040.01	067.01	Rebar Changes for Station Pavers	10/28/2013	10/31/2013	3		\$10,586
041.00	112.00	12" Pasadena Waterline Potholes	8/12/2013	8/16/2013	4		\$19,735
042.00	150.00	Demo Abandoned Water Lines @ Dalton	8/12/2013	8/16/2013	4		\$5,937
043.00	007.01	Emer. Backup for Guideway Lighting	8/16/2013	10/1/2013	46		\$359,158
044.00	172.00	Contaminated Wood Culvert Sta. 1202	8/27/2013	8/28/2013	1		\$7,712
045.00	139.00	BLS Changes	8/28/2013	9/4/2013	7		\$110,801
046.00	165.00	Azusa-Alameda Station; 2nd Portal	8/28/2013	9/4/2013	7		\$77,175
047.00	145.00	St. Joseph drainage enhancements	9/4/2013	9/6/2013	2		\$17,592
048.00	149.00	M&O - Lights at NW Corner Park	9/4/2013	9/6/2013	2		\$29,351
049.00	174.00	TPSS #5 Cal-Am Power Conflict	9/4/2013	9/6/2013	2		\$127,260
050.00	171.00	Relocate Access Stair to Foothill	9/4/2013	9/6/2013	2		\$20,276
051.00	173.00	Dalton 8" Water Line Work	9/5/2013	9/12/2013	7		\$35,316
052.00	071.00	Duarte Rd Screen Wall Change	9/5/2013	9/17/2013	12		(\$133,864)
053.00	176.00	Remove Contaminatd Wood-Buena Vista	9/10/2013	9/12/2013	2		\$5,543
054.00	147.00	DECCO Bypass	9/10/2013	9/12/2013	2		\$18,519
055.00	166.00	Foothill Blvd. Water/SD Relocation	9/20/2013	9/20/2013	0		\$127,074
056.00	186.00	Contaminated Wood @ San Gabriel Ave	9/23/2013	9/24/2013	1		\$4,291
057.00	194.00	California/Duarte Water Line Work	10/28/2013	10/31/2013	3		\$220,743
058.00	189.00	Four Utility Changes	10/28/2013	10/31/2013	3		\$14,157
059.00	180.00	Remove/Dispose of ACM E of Highland	10/30/2013	11/1/2013	2		\$29,311
060.00	179.00	CTS Upgrade to OC-192	10/30/2013	11/1/2013	2		\$112,543
061.00	213.00	Irwindale On-ramp Stockpile	11/8/2013	11/21/2013	13		\$200,185
062.00	053.00	Delete Totten Tubes Scope of Work	11/8/2013	11/21/2013	13		(\$143,801)
063.00	146.00	Home Depot Striping and Signing	11/15/2013	11/21/2013	6		\$21,003
064.00	204.00	Unknown Duct Bank @ San Gabriel Ave	11/15/2013	11/21/2013	6		\$1,265
065.00	140.00	M&O-Overhead Work Platform Changes	12/5/2013	12/16/2013	11		\$317,656
066.00	217.00	Buried SD & Headwall, STA 1306+50	12/6/2013	12/17/2013	11		\$1,020
067.00	219.00	Contaminated Soil, Monrovia Station	12/12/2013	12/17/2013	5		\$17,503
068.00	220.00	DSC at Sawpit Wash Abutments	12/12/2013	12/17/2013	5		\$12,668
069.00	188.00	Costco Emergency Gate-Path to POS	1/21/2014	1/22/2014	1		\$19,882
070.00	214.00	M&O - Generator Load Bank	1/21/2014	1/22/2014	1		\$38,092
071.00	224.00	Alameda South Water Line Tie-in	1/30/2014	1/31/2014	1		\$6,330
072.00	202.00	Aesthetic Lighting Provisions-SGRB	2/3/2014	2/4/2014	1		\$27,055
073.00	160.00	Move Mountain Interlocking Bungalow	2/11/2014	2/13/2014	2		\$68,596
074.00	200.00	M&O Parts Carousel Warranty & PM	2/11/2014	2/13/2014	2		\$68,906
075.00	235.00	Remove Contaminated Wood Ties	2/14/2014	2/18/2014	4		\$4,571
076.00	234.00	Accelerate Work at California Ave	2/14/2014	2/18/2014	4		\$5,663
077.00	247.00	Line Stop in California	2/18/2014	2/20/2014	2		\$14,524
078.00	201.00	Added Sound Wall, SW of IFS	2/27/2014	2/28/2014	1		\$18,201
079.00	238.00	M&O-MOW Canopy Structural Eval	2/27/2014	2/28/2014	1		\$7,147
079.01	238.01	M&O - MOW Canopy Solar	8/20/2014	8/26/2014	6		\$714,659
080.00	232.00	Car Moving Tractor-Coupler Upgrade	2/27/2014	2/28/2014	1		\$177,145



Change Management Log

Date: 9/4/2014

Page: 3 of 4

Project: C1135 Alignment - FTC Contract #: C1135

Change Orders

Number	Change Management	Title	Initiated Date	Approved Date	Outstanding Days	Time Extension	Amount
EXECUTED Change Orders							
081.00	242.00	Car Moving Tractor Options/Features	2/27/2014	2/28/2014	1		\$69,099
082.00	091.00	Rockvale Water Line Mitigation	3/4/2014	3/5/2014	1		\$163,750
082.01	091.01	Rockvale Water Line-EIC credit	4/11/2014	4/14/2014	3		(\$5,391)
083.00	251.00	Cut and Move Rail to Segment 1	3/4/2014	3/5/2014	1		\$249,934
084.00	218.00	Delete Equipment at ROC	3/26/2014	3/27/2014	1		(\$91,708)
085.00	239.00	Install Sound Wall Door @ STA. 1169	3/26/2014	3/27/2014	1		\$12,737
086.00	250.00	Change Top Row of Block Wall 1124.1	3/26/2014	3/27/2014	1		\$3,688
087.00	229.00	Inwindale TPSS-Adjust Eqpt. Layout	4/3/2014	4/7/2014	4		\$17,878
088.00	262.00	Provisional Sum Adjustment	4/3/2014	4/7/2014	4		\$0
089.00	261.00	Longer DF Bolts - SGRB	4/3/2014	4/7/2014	4		\$17,331
090.00	169.02	M&O Trammng Table Changes (rev. 2)	4/11/2014	4/14/2014	3		\$54,083
091.00	181.00	Alameda Utility Changes	4/11/2014	4/14/2014	3		(\$9,599)
092.00	241.00	Business Center TPSS Crane Changes	4/23/2014	4/28/2014	5		\$13,655
093.00	276.00	Myrtle Early Completion Incentive	4/23/2014	4/28/2014	5		\$160,000
094.00	254.00	Drainage East of Pasadena Ave.	4/23/2014	4/28/2014	5		\$6,569
095.00	275.00	Remove Rail Ties at 1st/Santa Clara	4/23/2014	4/28/2014	5		\$2,270
096.00	274.00	Buried Concrete @ Huntington Bridge	4/23/2014	4/28/2014	5		\$2,819
097.00	269.00	Asbestos Pipe at Duarte and Myrtle	4/23/2014	4/28/2014	5		\$6,583
098.00	278.00	Abandoned Gas Line at California	5/6/2014	5/7/2014	1		\$8,170
099.00	170.00	M&O Car Wash Betterments	5/6/2014	5/7/2014	1		\$166,144
100.00	223.00	M&O-Volume Control for PA Speakers	5/6/2014	5/7/2014	1		\$38,105
101.00	283.00	Track Work Around at Mountain Ave	5/6/2014	5/7/2014	1		\$29,996
102.00	284.00	Install 115# Buffer Rails in Seg. 1	5/6/2014	5/7/2014	1		\$29,442
103.00	230.00	Azusa-Citrus Ped Crossing Operation	5/6/2014	5/7/2014	1		\$84,183
104.00	231.00	Red Signal Violation Indication	6/3/2014	6/3/2014	0		\$335,134
105.00	253.00	Remove Stem Wall along Duarte Rd.	6/11/2014	6/12/2014	1		\$37,527
106.00	271.00	DVR Changes	7/16/2014	7/17/2014	1		\$181,301
107.00	260.00	M&O Supplemental Fire Water System	7/16/2014	8/4/2014	19		\$1,642,824
108.00	163.00	1st/Santa Clara Grade X-ing Changes	7/25/2014	7/30/2014	5		\$156,177
109.00	164.00	M&O Body Shop Changes	7/25/2014	8/4/2014	10		\$488,598
110.00	256.00	Monrovia North Bunglow LCP Changes	7/25/2014	7/30/2014	5		\$125,313
111.00	237.00	M&O-Signaling System Changes	7/29/2014	8/4/2014	6		\$1,133,746
112.00	252.00	Inwindale Security Kiosk Provisions	8/4/2014	8/6/2014	2		\$178,044
113.00	281.00	M&O - Accent Colors	8/4/2014	8/6/2014	2		\$26,928
114.00	305.00	Lead Paint, Foothill Median Barrier	8/18/2014	8/20/2014	2		\$5,690
115.00	270.00	TES Load Flow Simulation	8/19/2014	8/21/2014	2		\$22,399
116.00	203.00	Mayflower Driveway/Wall Credit	8/20/2014	8/26/2014	6		(\$19,138)
117.00	307.00	Contaminated Wood Ties-Santa Anita	8/20/2014	8/26/2014	6		\$3,226
Subtotal:							\$15,582,614
Subtotal:							\$15,582,614
Total:							\$15,582,614

Open PCOs

PCO Number	Title
OPEN	
027.01	M&O / 3M Fence Revisions (rev 1)
029.00	Del. Inwindale/Gladstone Mitigation



Change Management Log

Project: C1135 Alignment - FTC Contract #: C1135

Open PCOs

PCO Number	Title
OPEN	
053.01	Irwindale Ramp Changes (Rev 1)
070.01	Irwindale Security Kiosk - Part 2
073.00	Virginia TPSS Access Road
075.00	Comm. Changes Parking Structures
076.00	M&O Tactile Guidance Changes
080.00	Delete Evergreen / Myrtle Mitigation
081.00	Eliminate 'Train Coming' Signs
082.00	M&O - Guard House Changes
084.00	M&O Service Vehicle Pathways
085.00	Joseph TPSS Power Feed Credit
086.00	Santa Anita Avenue Bridge Artwork
087.00	ETEL/PTEL Faceplate Betterment
088.00	Additional Anti-Graffiti Coating
089.00	M&O Lobby Aesthetic Changes
090.00	Replace Michillinda Pull Boxes
091.00	UP Tunnel Analysis & Modifications
092.00	Abandoned California Water Lines

Open RFCs

RFC Number	Title
OPEN	
078.00	Addl Fence To Close Gaps at Alignmn

Open RFC Notices

Number	Title
037.00	DSC at Santa Anita Wash Abutment 1
044.00	DSC Utility at Azusa Avenue
080.00	Irwindale Signal Case Location
081.00	Car Puller for Wheel Truing Machine
083.00	Sierra Madre Track Rehab



Description: Intermodal Parking Facilities & Enhancements **Status:** August 15, 2014

Contract No.: C1150

Contractor:

Webcor Builders

Progress Completed This Period

Design

- Submit Schedule of Values Azusa-Citrus
- Submit 100% HVAC Calculations - Arcadia
- Submit 100% HVAC Calculations - Monrovia
- Submit 100% HVAC Calculations - Azusa-Citrus
- Submit 100% HVAC Calculations - Irwindale
- Submit 100% Fire Sprinkler Calculations - Arcadia
- Submit 100% Fire Sprinkler Calculations - Monrovia
- Submit 100% Fire Sprinkler Calculations - Azusa-Citrus
- Submit 100% Fire Sprinkler Calculations - Irwindale

Activities Planned Next Period

Design

- Submit AFC Design - Azusa-Citrus Parking Structure
- Submit AFC Design - Irwindale Enhancements
- Submit AFC Design - Irwindale Parking Structure

Areas of Concern

- **IRWINDALE PARKING STRUCTURE DESIGN**
The Authority has issued the Design-Build Contractor a Potential Change Order to revise the location of the Irwindale Parking Structure from the current location identified in the 85% design submittal. The revised design will require the parking structure to be moved in order to avoid a utility conflict with the existing SCE distribution line. The redesign effort will impact the completion of the AFC design and potentially impact the Substantial Completion milestone. The parking structure package was expected to be completed by June 2014, but will slip to August 2014.

Areas of Concern (Continued)

- **IRWINDALE SITE PUMP STATION** - The site excavation, which is near complete has been suspended because the excavation for the pump station invert is within the railroad zone of influence. The Design-Build Contractor completed the re-design the pump station to avoid the installation of railroad shoring. The Design-Build Contractor received a rail outage from UPRR and has completed the pump station invert and first level walls.
- **IRWINDALE SCE POLE SHORING** - The existing SCE pole, which was left in place to avoid relocation requires shoring to complete the site excavation. This period the Design-Build Contractor continued the shoring installation for the existing utility pole and is near completion.



Description: Intermodal Parking Facilities & Enhancements **Status:** August 15, 2014

Contract No.: C1150

Contractor: Webcor Builders

Cost Summary:

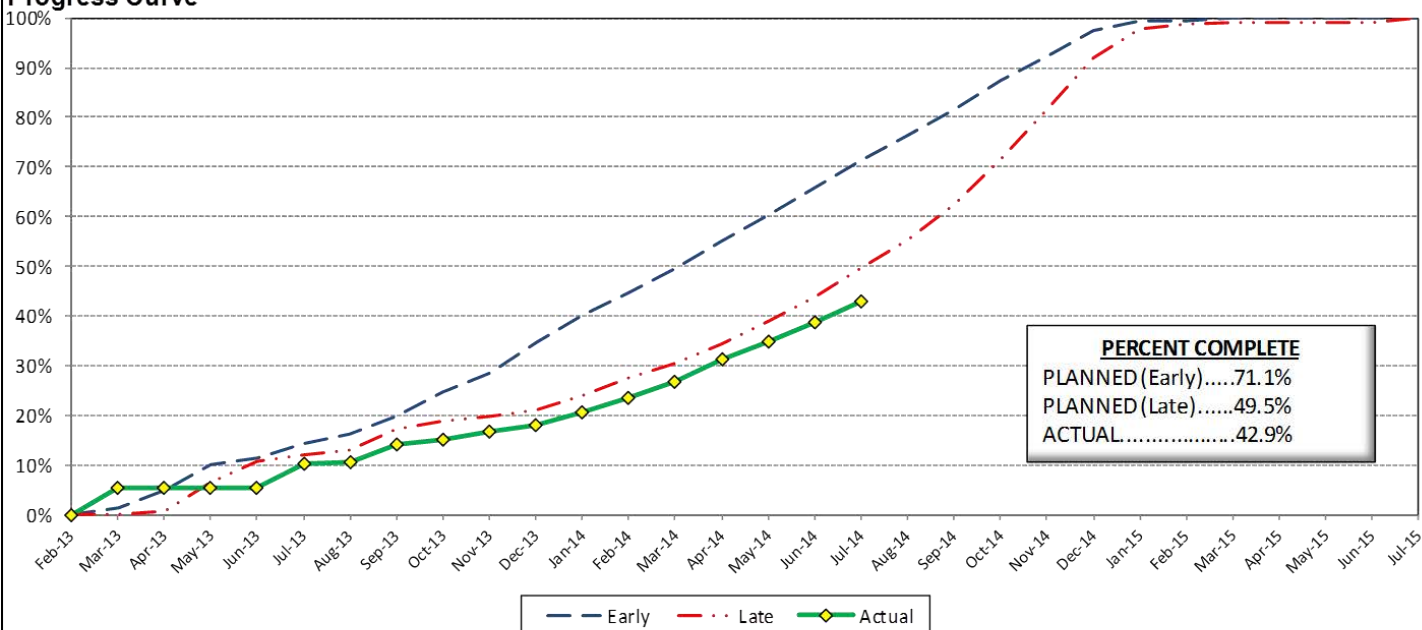
	Million(s)
CONTRACT	
Contract Award Value:	48.8
Executed Change Orders:	0.5
Current Contract Value:	49.3
Potential Change Orders:	0.3
Current Forecast:	49.6
Earned Value/Actual Cost	21.1
AUTHORIZATION FOR EXPENDITURE	
Budget	50.3
Commitment	49.3
Balance	0.7

Cost Assessment:

The current cost forecast is 49.6 Million and has increased \$156 Thousand from the previous period. The increase is due to the execution of CO 013 - *St. Joseph Drainage Enhancements*, PCO 016 - *Parking Facility Artwork*, and RFC 013 - *ETEL Enclosures*. The overall cost increase was off set due to the cost reductions CO 014 - *Additional Conduit Provisions*, and PCO 004 - *TPSS Grounding Modifications*, and CO 011 - *SCE Power Feed to DB2 Arcadia TPSS*. The current forecast is within the authorized budget.

The Design-Build Contractor remains behind the baseline plan due to schedule delays at the Irwindale and Azusa Citrus sites. Upon the execution of Change Order No.4, the Design-Build Contractor will be granted a 90 day time extension and the planned progress curve will be revised.

Progress Curve



Schedule Summary:

Contract Award:	02/27/13
Notice to Proceed (NTP) :	03/20/13
Original Contract Duration:	845 Calendar Days
Current Contract Duration:	845 Calendar Days
Elapsed Time from NTP:	513 Calendar Days

Contract Milestones

Milestones	Description	Original Contract	Current Contract	Forecast	Variance
1	Substantial Completion	03/15/15	03/15/15	08/13/15	(151)
2	Punchlist Complete	05/29/15	05/29/15	10/27/15	(151)
3	Final Completion	07/13/15	07/13/15	12/11/15	(151)
4	TPSS Work	03/01/14	03/01/14	3/31/2014 A	(30)

Schedule Assessment:

The critical path is currently through the Irwindale site preparation. The pump station construction is in progress. The first of four lifts was completed. Upon the completion of the second lift, the area will be backfilled, which will allow the MSE wall construction to start. The SCE pole shoring installation continues and must be completed prior to starting the MSE wall. The soil nail wall construction, which is critical will begin after the first of seventeen MSE wall lifts is completed. The Design-Build Contractor is approximately 151 days behind schedule. The Authority will grant a 90 day time extension due to schedule delays caused by CO 004 - *Irwindale Structure Relocation*. However, if the Design-Build Contractor is going to meet the Contractual Dates identified in Change Order No.4, then it will need to mitigate 61 days, which were due shoring issues and the pump station re-design.

PARKING FACILITY CONSTRUCTION IMAGES

Arcadia Parking Structure Interior View



Monrovia Parking Structure Site Overview

Monrovia Parking Structure -
Elevator Structural Steel



PARKING FACILITY CONSTRUCTION IMAGES

Irwindale Parking Structure Site Excavation



Irwindale Pump Station

Azusa-Citrus Parking Structure Overview





Change Management Log

Date: 9/4/2014

Page: 1 of 1

Project: C1150 Parking - Webcor Contract #: C1150

Original Contract Amount:	\$48,750,000				
Approved Change Orders:	\$600,747	1.23%	Pending Change Orders:	\$0	0.00%
Current Contract Total:	\$49,350,747		Pending Contract Total:	\$49,350,747	1.23%

Change Orders

Number	Change Management	Title	Initiated Date	Approved Date	Outstanding Days	Time Extension	Amount
EXECUTED Change Orders							
001.00	001.00	Monrovia Parking Alternative Layout	6/25/2013	7/11/2013	16		\$21,382
001.01	001.01	Monrovia Alternative - Cancelation	9/17/2013	10/7/2013	20		(\$12,006)
002.00	003.00	Clock Tower Procurement	7/3/2013	7/11/2013	8		\$107,246
003.00	002.00	Relocate Elevator @ Azusa-Citrus PF	12/18/2013	1/8/2014	21		\$159,899
004.00	013.00	Irwindale Structure Relocation	1/23/2014	8/28/2014	217	90	(\$65,564)
005.00	018.00	Monrovia Demo Unforseen Conditions	3/18/2014	3/26/2014	8		\$17,013
006.00	010.00	Arcadia Transit Plaza Betterments	3/14/2014	3/26/2014	12		\$35,466
007.00	009.01	Irwindale Intersection Betterments	3/25/2014	3/26/2014	1		\$19,985
008.00	017.00	Irwindale Intersection Water Line	3/25/2014	4/14/2014	20		\$7,748
009.00	020.00	Unforeseen Underground Demo-Arcadia	6/13/2014	7/9/2014	26		\$6,313
010.00	011.00	Soldano TPSS Added ROW Fence	7/24/2014	7/28/2014	4		\$8,481
011.00	024.00	SCE Power Feed to DB2 Arcadia TPSS	7/24/2014	7/28/2014	4		\$17,199
012.00	025.00	Additional Sidewalk at Arcadia	7/24/2014	7/28/2014	4		\$3,342
013.00	006.00	St. Joseph Drainage Enhancements	7/31/2014	7/31/2014	0		\$139,488
014.00	012.00	Additional Conduit Provisions	8/13/2014	9/3/2014	21		\$57,262
015.00	030.00	Unforeseen Conditions at Michillind	8/22/2014	8/28/2014	6		\$1,643
016.00	019.00	Parking Facility Artwork	8/27/2014	8/28/2014	1		\$75,850
Subtotal:							\$600,747
Subtotal:							\$600,747
Total:							\$600,747

Open PCOs

PCO Number	Title
OPEN	
004.00	TPSS Grounding Grid Modifications
008.00	Azusa-Citrus Plaza Pavers
013.00	Primrose Avenue cul-de-sac Deletion
014.00	Delete Azusa-Alameda Enhancements
015.00	Monrovia Canopy & Color Betterments
017.00	Michillinda Pull Box Replacement

Open RFCs

RFC Number	Title
OPEN	
006.00	Conduit Demo and Pull Box Re-work a
007.00	Added PME Switch & 2 Spare Conduits
010.00	Metro Requested EV Charger Upgrades
011.00	Comm. Duct Bank Interface with DB2
012.00	SCE Capacitor Bank at Michillinda T
013.00	E TEL Enclosures
015.00	Metro Requested Elevator Vent Detail

Open RFC Notices

Number	Title
005.00	Irwindale CCTV Power Pole



AZUSA TO MONTCLAIR SEGMENT

ACTIVITIES COMPLETED THIS PERIOD

Authority and City staff continued to hold coordination meetings to discuss the project. A draft of the Master Cooperative Agreement (MCA) has been distributed to all cities for review, after which all parties will convene to discuss and negotiate the MCA for execution.

The Authority has also initiated the restart of the Station Design Art Program (SDAR). The first SDAR meetings are planned to begin in late October 2014.

This period, Authority staff worked on the following technical elements of the project:

- Continued advancement of the plan and profile drawings
- Completed development of surveying scope of work for AECOM to perform and gave AECOM direction to proceed with this work
- Completed development of geotechnical scope of work for AECOM to perform
- Completed development of Pomona parking facility scope of work for AECOM to perform - requested Form 60 from AECOM

KEY FUTURE ACTIVITIES

The advanced conceptual engineering process is an 18-month process. Upon completion, the Azusa to Montclair segment will be ready for a design-build procurement. Upcoming activities include continuing to attend coordination meetings with each corridor city, kickoff of the ROW drawing work, refinement of the alignment, completing the SDAR, and kickoff of geotechnical investigations.

Federal Transit Administration (FTA)

The Metro Board of Directors excluded the Gold Line from seeking federal New Starts funding. The Authority will work together with Metro along with the Congressional delegation to seek funding to construct the extension following completion of the environmental review.



PHASE II FOOTHILL EXTENSION FINANCIAL STATUS

Project Operating Budget Summary in Millions of Dollars

August 31, 2014

	(a)	(b)	(c=a-b)	(d)
FINANCIAL PLAN	Current Budget	Funding Committed to Project	Uncommitted Funds	Revenues Received
SCAG	1.0	0.9	0.1	0.9
Interest Income	2.0	2.0	-	2.0
Bridge Replacement	13.9	13.9	-	13.9
Phase I Carryover	4.0	4.0	-	4.0
Maintenance and Operations Facility	-	-	-	-
Cities	11.0	-	11.0	-
Measure R - Pasadena to Azusa	810.5	777.0	33.5	412.3
Measure R - Azusa to Montclair	-	-	-	-
SANBAG	55.2	1.5	53.7	1.5
Federal TCSP	2.9	2.9	-	2.7
Federal Bus Intermodal Plan	9.0	9.0	-	3.6
Federal New Starts 2004 MTA Passthrough	4.0	4.0	-	4.0
Federal New Starts 2005 MTA Passthrough	0.5	0.5	-	0.5
Federal New Starts 2006 Corridor Study	2.5	2.5	-	2.5
Federal/Other	802.5	-	802.5	-
Total Revenues	1,719.0	818.2	900.8	447.9
	(a)	(b)	(c)	(d=a-b)
	Current Budget	Current Obligation	Current Expenditures	Current Available Balance
EXPENSES				
Program Management and Administration	107.9	86.1	85.2	21.8
Master Cooperative Agreements	12.0	3.3	3.1	8.7
Real Estate including ROW Acq	21.0	21.0	18.8	-
Special Programs	0.3	-	-	0.3
Procurement/Vehicles	60.0	-	-	60.0
Maintenance and Operations Facility Land	22.0	22.0	22.0	-
Construction - IFS	19.8	19.8	19.8	-
Construction - Pasadena to Azusa segment	328.9	328.9	271.0	-
Construction - Azusa to Montclair segment	950.0	-	-	950.0
Construction - M&O	46.0	44.0	26.4	2.0
Construction - Parking Structures	44.2	44.2	24.0	-
MTA Project Costs	64.0	64.0	14.3	-
Contingency	27.4	-	-	27.4
Project Reserve	15.5	-	-	15.5
Total Project	1,719.0	633.3	484.6	1,085.7