



We're bringing you
a better bus experience.



FLORENCE AV BUS PRIORITY LANES PROJECT
Community Meeting

May 2022

Agenda

- I. Welcome
- II. Project Video
- III. Meeting Format
- IV. Agenda
- V. Team Introductions
- VI. Community Guidelines
- VII. Presentation
- VIII. Question & Answer Session
- IX. Adjournment

*This meeting is being recorded for distribution by Metro as part of the outreach process.

Community Guidelines

To provide a safe, comfortable and equitable space during this meeting, we are asking for your help.

- > Treat fellow community members and our presenters with respect
- > Maintain a conversational tone
- > Address all questions to today's presenters – not to other attendees

Metro is committed to ensuring that all participants can fairly and clearly ask questions and share ideas, comments and concerns.

We reserve the right to end the meeting at any point, if we are unable to continue the meeting consistent with these guidelines.

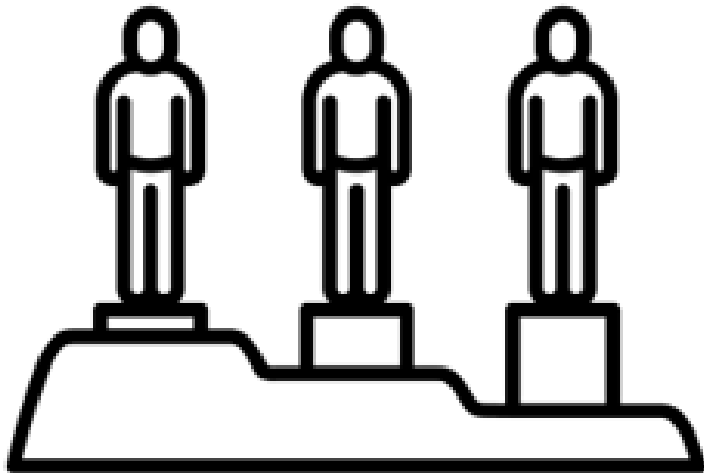
Any participants that do not follow these guidelines or post/verbalize inappropriate content will be removed from the meeting.

Project Team Members & Partners

- > **Stephen Tu**—Director, Service Planning (Metro)
- > **James Shahamiri**—Senior Manager, Engineering (Metro)
- > **Julia Brown**—Senior Manager, Community Relations (Metro)
- > **Annette Cortez**—Manager, Community Relations, Crenshaw/LAX (Metro)
- > **Carlos Rico**—Transit Security Community Liaison (Metro)
- > **Wajenda Chambeshi**—Transportation Planner (LADOT)
- > **Clare Eberle**—Supervising Transportation Planner I (LADOT)

Metro has a plan to make it easier to get around LA. It includes creating better transit. This project works to improve bus speeds, enhance mobility, and meet equity platform goals.

What is Equity?



Equity is both an **outcome** and a **process** to address racial, socio-economic, and gender **disparities**, to ensure fair and just access – with respect to where you begin and your capacity to improve from that starting point – to **opportunities**, including jobs, housing, education, mobility options, and healthier communities.

Typical Metro Bus Rider

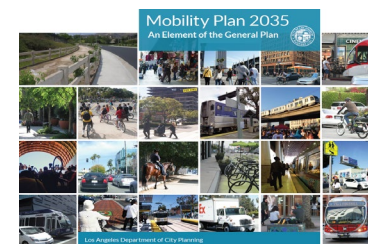
Customer Survey Results (Fall 2019)

- > **8 in 10** are people of color
- > **Over half** are female
- > **Nearly 9 in 10** live in households with total annual earnings below \$50,000
- > **Nearly 6 in 10** are below the poverty line



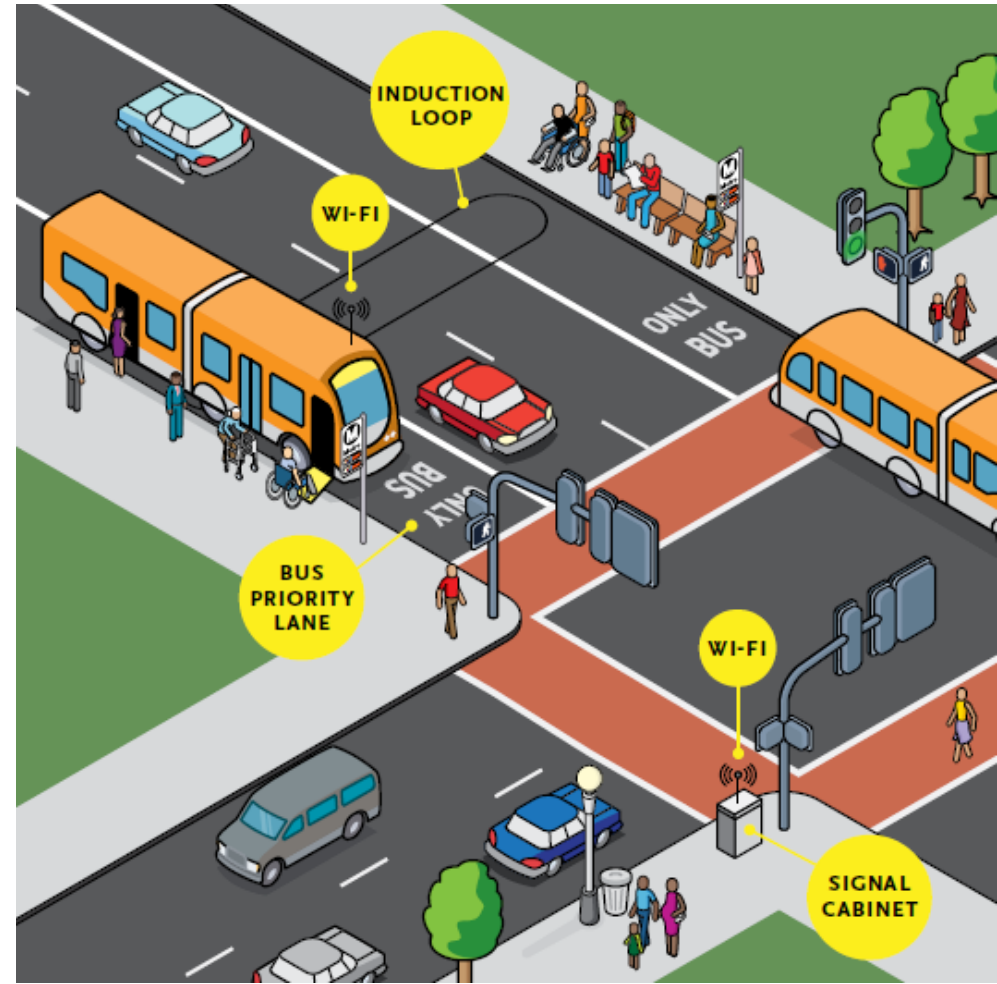
Improving Bus Service in LA

- > Partnering with City of LA to improve speed, frequency, and reliability of bus service
- > **City of LA adopted Vision Zero in 2015:** Florence Av is on the City of LA's high-injury network
- > **City of LA adopted Green New Deal in 2015 (updated in 2019):** supports improving travel time on LA County's bus network by 30 percent in 2028
- > **City of LA adopted Mobility Plan 2035 in 2016:** recommends strategic corridors of bus lane improvements for a Transit Enhanced Network
- > **County of LA adopted its own Vision Zero in 2019:** Florence Av in Florence-Firestone community listed as a Collision Concentration Corridor
- > **NextGen Bus Plan approved by Metro Board in October 2020:**
 - Four rounds of NextGen service changes implemented (Dec 2020, June 2021, Sept 2021, Dec 2021)



Support NextGen Bus Plan Implementation

- > Priority bus supportive infrastructure projects
- > Working Group with Metro and LADOT staff
- > Opportunities for coordination where bus delay hotspots exist
- > Quarterly updates to Operations, Safety and Customer Experience Committee



People Moving Capacity

- > **Increase capacity** to move more people without expanding local streets and roadways
- > **Improve efficiency** by prioritizing high occupancy modes of travel



Private (or shared) motor vehicles
600-1,600/HR



Mixed traffic with frequent buses
1,000-2,800/HR

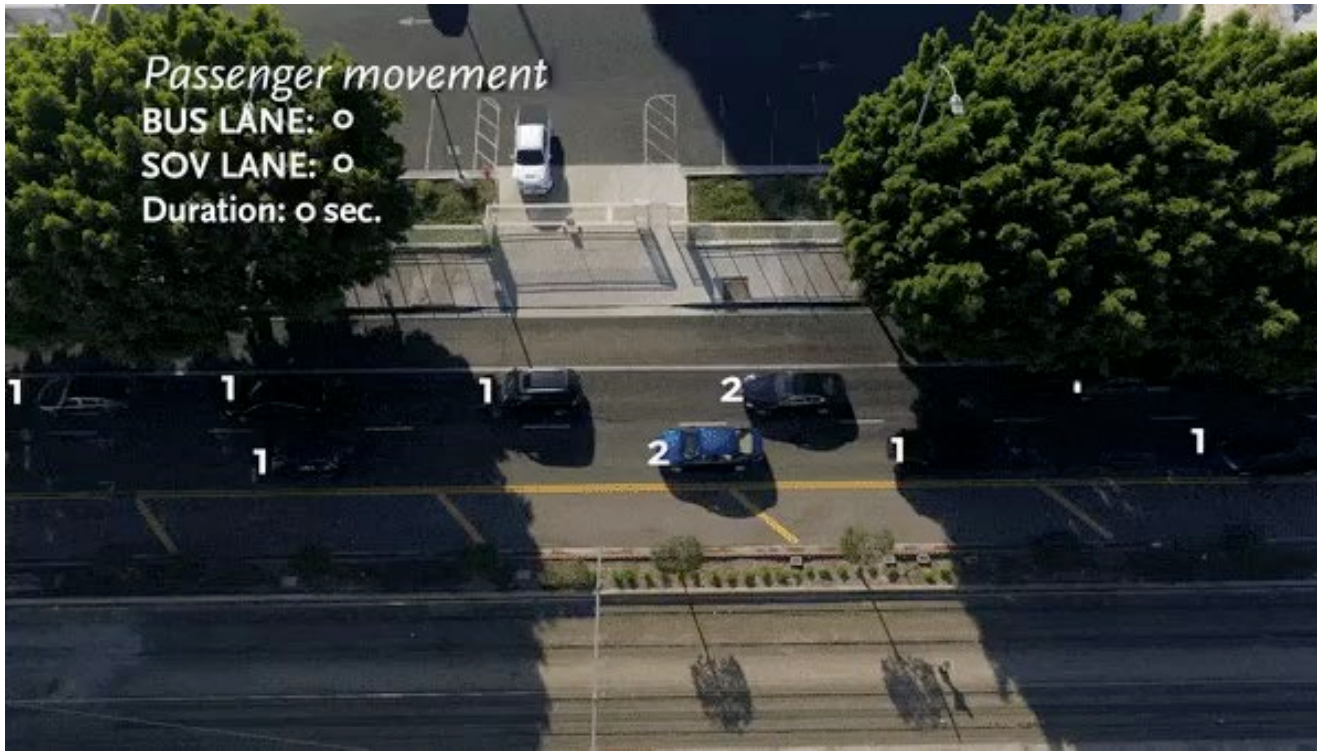
Dedicated transit lanes
4,000-8,000/HR



Data Courtesy of NACTO Transit Center

Bus Priority Lanes

> Improve bus speeds by 15% or more, increase service frequency and reliability, and move more people without adding more infrastructure



Flower St Bus Priority Lane

Project Overview

- > 5.4-mile segment of Florence Av between West Bl & Florence A Line (Blue) Station
- > Would convert peak hour tow away lanes into bus priority lanes in each direction in both weekday morning and afternoon peaks
 - 7-10am, Monday-Friday
 - 3-7pm, Monday-Friday
- > Street parking would remain available during mid-day, evenings, weekends, & observed holidays
- > Total Daily Metro Boardings: 16,500

Florence Av Bus Priority Lanes Project



People Taking Transit on Florence Av

Line 111 Customer Survey Results (Fall 2019)

- > **88%** do NOT own a car and RELY on bus service
- > **93%** are people of color
- > **6 in 10** are below the poverty line
- > **9 in 10** take Metro at least several times per week





Bus Ridership on Florence Av

- The majority of riders getting on and off the bus occurs within the project corridor.
- This project will improve access to employment, education and other opportunity centers in the corridor.



*Data is from the NextGen Bus Study

Legend:

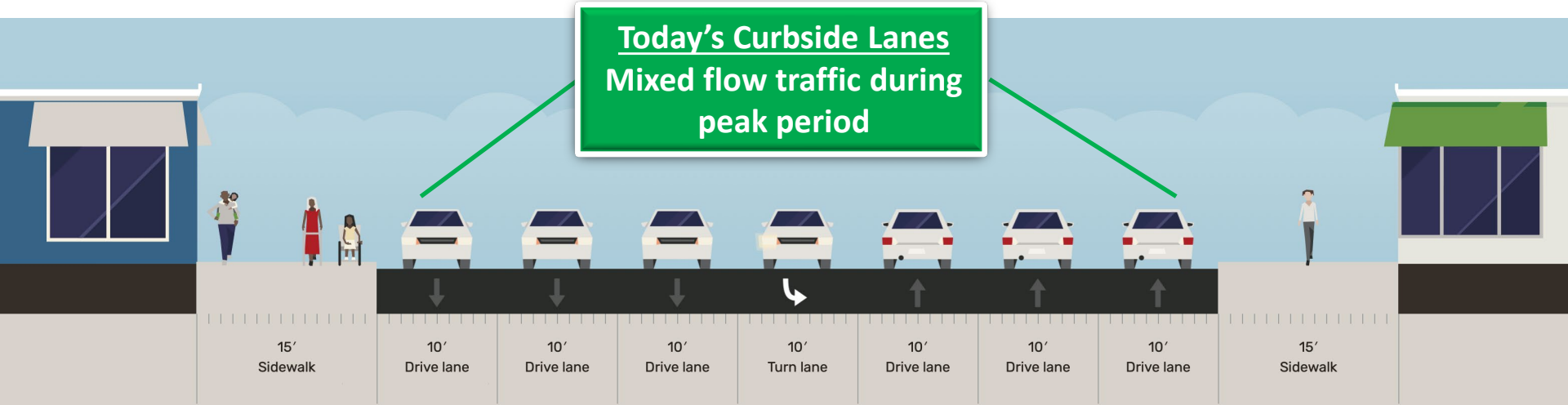
-  Concentration of riders getting on the bus
-  Concentration of riders getting off the bus

How Bus Lanes Would Work

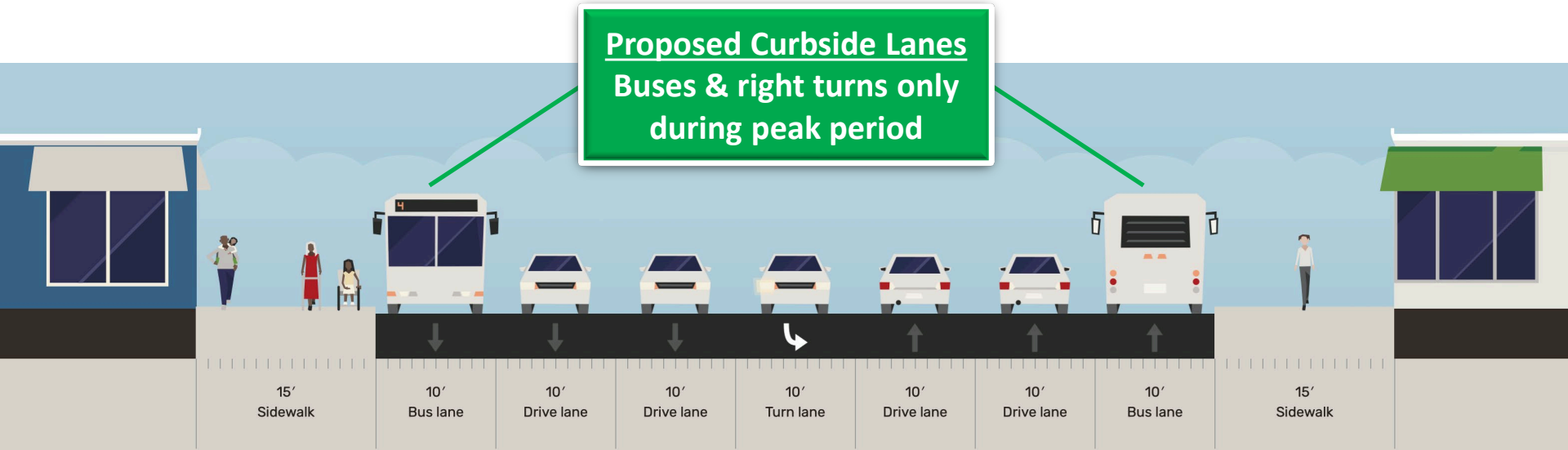
- > Convert **curb lanes** into bus priority lanes and right turns only
- > Revise parking restrictions:
 - From the current AM peak period to 7-10am
 - From the current PM peak period to 3-7pm
- > Buses would be planned to run every 7 ½ minutes during peak commute hours
 - Improves the current frequency of 12 minutes
 - Increases service by 50% while the bus priority lanes are in operation
- > Street parking would remain available:
 - During weekday off-peak hours (mid-day)
 - Weekday evenings and overnight
 - On weekends and observed holidays

Existing & Future Conditions

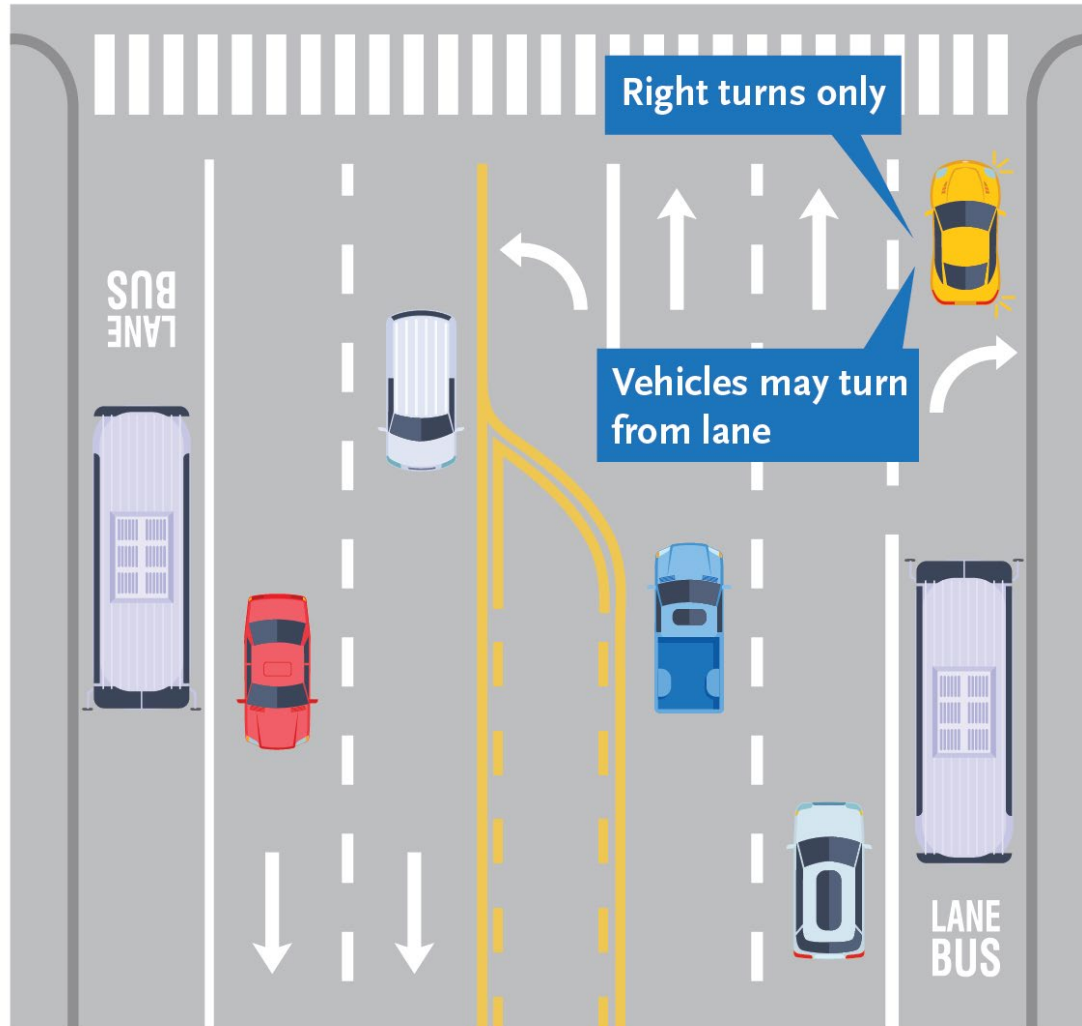
Today's Curbside Lanes
Mixed flow traffic during
peak period



Proposed Curbside Lanes
Buses & right turns only
during peak period



Interacting with a Bus Lane



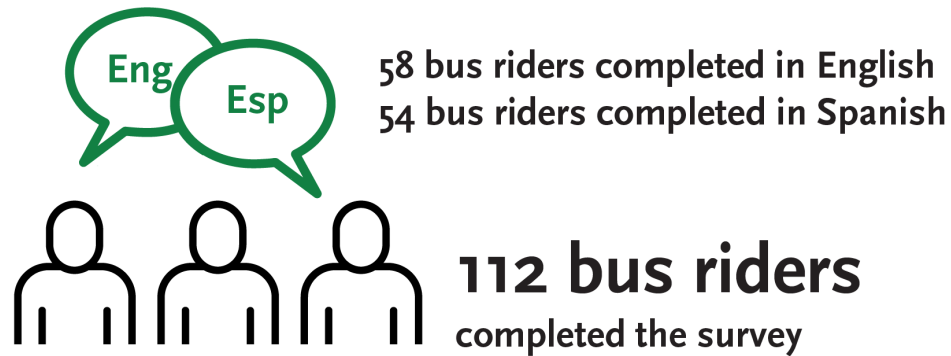
Benefits for All Street Users

- > **Taking Transit:** Improves speed, frequency & reliability of bus service
- > **Walking:** Improves safety of crossing the street and walking to nearby bus stops
- > **Driving:** Reduces need for buses to mix with vehicles in travel lanes AND maintains existing mid-day, overnight, weekend/observed holiday street parking for residents and visitors. High frequency of crashes in rightmost lanes.
- > **Biking:** People on bikes can use the bus priority lanes when needed

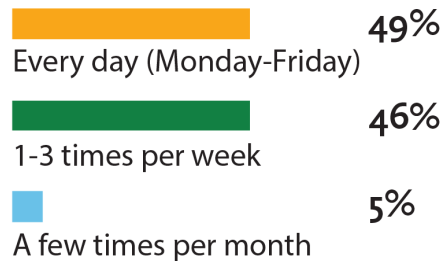


Bus Rider Survey Results

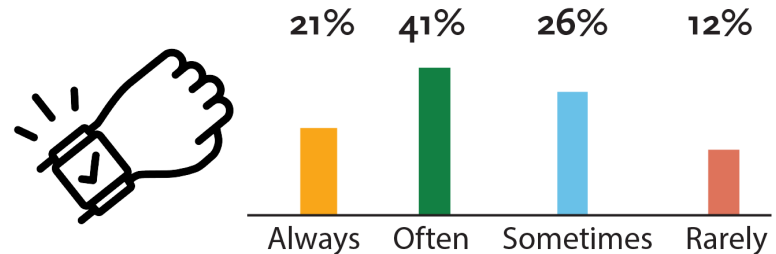
Outreach staff surveyed riders onboard buses along the Florence Av corridor from April 26 through May 6.



How often do you ride a bus along this corridor?



How often do you experience delays due to traffic congestion on Florence Av? (Pick one)

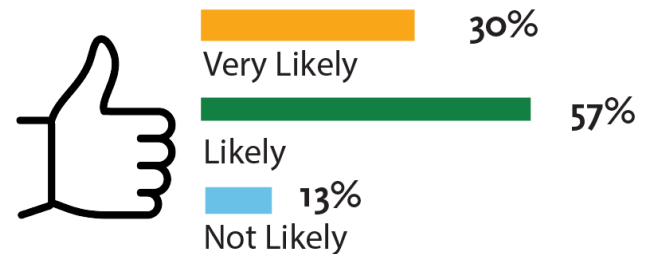


Bus Rider Survey Results

Please rank which benefits of a bus priority lane are most important to you.

- 1 More reliable trip times
- 2 The bus showing up on time more often
- 3 Safety by reducing opportunities for speeding and unsafe lane changes

Would having a more reliable trip time on this line encourage you to use the bus more?
(Pick one)



Project Schedule



Metro's Discounted Fare Programs

Discounted Prices

- > **Buy a pass, save half**
- > 1-Day, 7-Day and 30-Day passes at half-price savings
- > \$3.50 for a day pass, \$12.50 for a weekly pass and \$50 for a 30-day pass
- > Fares available on TAP vending machines, taptogo.net and at Metro Customer Centers for purchase

Low-Income Fare Is Easy (LIFE) Program

- > **Six months of discounted LIFE fares.**
- > **New LIFE riders get 90 days of free rides**
- > \$26 for a 30-day pass (regularly \$76)
- > \$6.50 for a 7-day pass (regularly \$19.50)
- > To sign up for the LIFE Program, visit www.metro.net/life



Tap into savings.

A little help can go a long way. So we've made it easier to enroll in Metro's LIFE Program. Sign up now and get 90 days of free rides. Visit metro.net/life to get started.

Fare collection has resumed. When riding, please have your fare ready.

M Metro

The advertisement features a woman with dark curly hair, wearing a purple top, smiling and looking upwards. The background is a light pink with abstract, colorful shapes in shades of orange, yellow, and red. The Metro logo is in the bottom left corner.

Aproveche los ahorros.

Con un poco de ayuda, se ayuda mucho. Por eso, hemos facilitado la inscripción en el programa LIFE de Metro. Regístrese ahora y obtenga 90 días de viajes gratis. Visite metro.net/life para comenzar.

La colección de tarifas se ha reanudado. Cuando viaje, por favor tenga lista su tarifa.

M Metro

The advertisement features a man with short dark hair, wearing a yellow corduroy jacket, smiling and looking towards the camera. The background is a light purple with abstract, colorful shapes in shades of orange, yellow, and red. The Metro logo is in the bottom left corner.

Metro is Hiring Bus Operators



GET HIRED! BUS OPERATOR HIRING EVENT

Saturday, May 21, 2022, 8am – 1pm

Earn a
\$3,000
sign-on
bonus.

¡VENGA A QUE LO CONTRATEN!

Sábado 21 de mayo de 2022, de 8am a 1pm.

Recibe un
bono de
inscripción
de \$3,000.

East Los Angeles Community College
2044 Bleakwood Av
Monterey Park, CA 91754

Free onsite parking.

Go Metro: bus lines 70, 106 and 260.

*Interviews, bus operator candidate
assessment testing, physicals and
fingerprinting – all in one day!*

ITEMS TO BRING:

- > Driver's license (must be 21 years or older)
- > K4 driving record dated within 30 days (obtainable from the DMV office, DMV kiosks and online)
- > A copy of your resume

DRESS CODE:

Please wear flat, closed-toe shoes.

Metro offers a \$3,000 sign-on bonus (terms and conditions apply) and a starting rate of \$20.49/hour.

To learn more, scan the QR code or contact the Metro Employment Office at 213.922.6217.

metro.net/hiring

Metro is an equal opportunity employer.

East Los Angeles Community College
2044 Bleakwood Av
Monterey Park, CA 91754

Habrà estacionamiento gratuito.

Viaje en Metro: línea de autobús 70, 106 y 260

*Habrà entrevistas, pruebas de
evaluación de candidatos para
operadores de autobús, exámenes
físicos e identificación mediante
huellas digitales, ¡todo en un día!*

LO QUE DEBE LLEVAR:

- > Licencia de conducir (debe tener 21 años de edad)
- > Antecedentes de conducción K4 con fecha dentro de los 30 días (obtenidos de la oficina del Departamento de Vehículos Motorizados (Department of Motor Vehicle, DMV), quioscos del DMV y en línea)
- > Currículo

CÓDIGO DE VESTIMENTA:

Por favor use zapatos bajos y cerrados.

Metro ofrece un bono de inscripción de \$3,000 (se aplican términos y condiciones) y una tarifa inicial de \$20.49 por hora.

Para obtener más información, escanee el código QR o comuníquese con la Oficina de Empleo de Metro al 213.922.6217.

metro.net/hiring

Metro es un empleador que ofrece igualdad de oportunidades.



257731E ©2022 LACMA



257731E ©2022 LACMA

Stay connected to this project.



Julia Brown, *Senior Community Relations Manager*

Metro

One Gateway Plaza, MS 99-13-1

Los Angeles, CA 90012



213.922.4869



florence@metro.net



metro.net/florence



@metrolosangeles



losangelesmetro