

# Westside Purple Line Extension



Metro®

# **WESTSIDE PURPLE LINE EXTENSION PROJECT**

## **MONTHLY PROJECT STATUS REPORT**

THE PREPARATION OF THIS DOCUMENT HAS BEEN FINANCED IN PART THROUGH A GRANT FROM THE U. S. DEPARTMENT OF TRANSPORTATION, FEDERAL TRANSIT ADMINISTRATION (FTA).

**FEBRUARY 2014**


## **TABLE OF CONTENTS**

	Page No.
Project Summary.....	1
Project Overview & Status.....	2-3
Management Issues.....	3
Project Alignment by Sections.....	4
Project Alignment Section 1.....	5
Base Project Scope.....	6-8
Project Status	
• Project Schedule	
◦ Key Milestones Six-Month Look Ahead.....	9
◦ Project Summary Schedule.....	10
◦ Critical Path Narrative.....	11
• Project Cost	
◦ Project Cost .....	12
◦ Project Cost Analysis.....	12
• Financial/Grant	
◦ Financial/Grant .....	13
◦ Status of Funding.....	13
• Staffing	
◦ Total Project Staffing.....	14
◦ Metro Staffing.....	15
◦ Construction Management Services Consultant.....	15
◦ Engineering Management Services Consultant.....	16
• Real Estate.....	17
• Quality Assurance.....	17
• Environmental.....	18
• Construction Relations.....	18
• Creative Services .....	19
• Safety & Security.....	19
• Third Party Agreement and Advanced Utility Relocation .....	20
• Peak Hour and Nighttime Construction Variances.....	21

**TABLE OF CONTENTS (Continued)**

	Page No.
• Chronology of Events.....	22-23
• Construction Contracts	
o Contract C1034 Status.....	24
o Contract C1048 Status.....	25
• Construction Photographs.....	26-27
Appendices	
• Cost and Budget Terminology.....	28
• List of Acronyms.....	29-32

**PROJECT SUMMARY**

<b>LOCATION:</b> Los Angeles / Beverly Hills				<b>CONSTRUCTION MANAGEMENT CONSULTANT:</b> WEST JV			
<b>DESIGN CONSULTANT:</b> Parsons / Brinckerhoff				<b>CONTRACTOR:</b> TBD			
<b>EXPLORATORY SHAFT TIE-BACK TESTING</b>				<b>WORK COMPLETED PAST MONTH</b>			
				<ul style="list-style-type: none"> <li>- C1034 Exploratory Shaft excavation to 66' depth</li> <li>- C1048 Advanced Utilities Relocations continuing at La Brea</li> <li>- CES Advanced Utility Relocations continuing at La Brea</li> <li>- Continued efforts seeking relief from Peak Hour Exemptions at locations other than La Brea</li> <li>- Continuing real estate needs coordination for Division 20</li> <li>- Continuing Advanced PE for C1078 Division 20 MOW and NRV facilities</li> <li>- Continuing design for 3rd-party utility relocations and traffic control at Fairfax, and advanced and 3rd-party utility relocations and traffic control at La Cienega.</li> <li>- C1055 Fairfax AUR bids were received on February 4, 2014</li> <li>- C1056 La Cienega AUR was advertised on February 21, 2014</li> </ul>			
<b>EXPENDITURE STATUS (\$ In Millions)</b>				<b>SCHEDULE ASSESSMENT</b>			
<b>ACTIVITIES</b>	<b>CURRENT ESTIMATE</b>	<b>EXPENDED AMOUNT</b>	<b>PERCENT EXPENDED</b>	<b>MAJOR SCHEDULE ACTIVITIES</b>	<b>PRIOR PLAN</b>	<b>CURRENT PLAN</b>	<b>VARIANCE WEEKS</b>
<b>DESIGN</b>	\$163.0	\$53.2	32.6%	<b>Environmental</b>			
				FEIS / FEIR	N/A	05/31/12	Complete
<b>RIGHT-OF-WAY</b>	\$212.5	\$1.4	0.7%	<b>Design</b>			
<b>CONSTRUCTION</b>	\$1,437.6	\$10.5	0.7%	PE Notice to Proceed	N/A	01/12/11	Complete
				Final Design complete	02/22/17	02/22/17	0
<b>OTHER</b>	\$1,048.2	\$56.9	5.4%	<b>Right-of-Way</b>			
<b>TOTAL</b>	<b>\$2,861.3</b>	<b>\$122.0</b>	<b>4.3%</b>	All parcels available	05/23/15	05/23/15	On Schedule
Current Estimate includes Planning and Finance Costs.				<b>Construction - Main Design / Build Contract</b>			
<b>AREAS OF CONCERN</b>				Notice to Proceed	08/25/14	08/25/14	0
- Market conditions may lead to higher construction costs				Construction complete	06/25/23	06/25/23	0
<b>ROW ACQUISITION</b>	<b>PLAN</b>	<b>ACQUIRED</b>	<b>REMAINING</b>	<b>CRITICAL ACTIVITIES / 3 MONTH LOOK AHEAD</b>			
PERMANENT PARCELS	24	0	24	<ul style="list-style-type: none"> <li>- CES: Complete advanced utility relocations at La Brea</li> <li>- C1034 Exploratory Shaft: Complete shaft construction, begin monitoring period</li> <li>- C1045 Design / Build contract: RFP technical evaluation</li> <li>- C1048 La Brea Advanced Utility Relocations: Complete construction</li> <li>- C1055 Fairfax Advanced Utility Relocations: Bid evaluation and contract award</li> <li>- C1056 La Cienega Advanced Utility Relocations: Bid period</li> <li>- C1078 Division 20 MOW and NRV facilities: Prepare design-build RFP package</li> </ul>			
TEMPORARY PARCELS	3	0	3				
<b>TOTAL PARCELS</b>	<b>27</b>	<b>0</b>	<b>27</b>				

## **PROJECT OVERVIEW & STATUS**

*Section 1 of the Westside Purple Line Extension Project is the first of three sections to be designed and constructed as part of the Los Angeles County Metropolitan Transportation Authority (LACMTA) Measure R Program. The program was approved by Los Angeles County voters in November 2008 and provides a half-cent sales tax to finance new transportation projects. In April 2012, the three sections of the Project were environmentally cleared and adopted by LACMTA Board of Directors.*

*Section 1 will extend the existing Purple Line by 3.92 miles beginning at the Wilshire/Western Station. From this station, the twin tunnel alignment will travel westerly within the existing Wilshire Boulevard right-of-way. Stations will be located at the intersections of Wilshire/La Brea, Wilshire/Fairfax, and Wilshire/La Cienega. All three of the station boxes will be located within the Wilshire Boulevard right-of-way with station portals extending to off-street entrances. Two of the stations, Wilshire/La Brea and Wilshire/Fairfax are within the jurisdiction of the City of Los Angeles. The Wilshire/La Cienega Station is within the City of Beverly Hills jurisdiction.*

### **Design**

The Engineering Management Services Consultant continues to advance the Division 20 Maintenance-of-Way Building (MOW) and the Non Revenue Vehicle (NRV) facility, supporting Metro in the procurement of the major Design/Build Contract (C1045), and supporting Metro in the final construction stages of the exploratory shaft and the Wilshire/La Brea advanced utility relocations.

For the Wilshire/La Brea Advanced Utility Relocations (AUR) Contract (C1048), the design team is continuing to develop for LADOT approval additional traffic control stages requested by Metro in support of the contractor.

Two amendments are planned for the Wilshire/La Cienega Advanced AUR Contract (C1056). The first includes the geotechnical data for the Southern California Edison (SCE) tunneling under the storm drain box culvert within La Cienega Boulevard. The second will provide traffic control drawings for the SCE relocation work.

The design team continues to respond to comments on the traffic control drawings and temporary signal plans for peak hour exemptions for pile construction at the Wilshire/Fairfax Station and the Wilshire/Western TBM extraction shaft.

The design team submitted on February 28, 2014 the "In Progress" technical documents for the Division 20 MOW Building and the NRV facility. A rooftop parking design scheme was included in lieu of the previous surface parking lot design.

### **Major Contract Procurement**

Contract C1045 RFQ proposals were received on January 30, 2014 and are being evaluated.

Five price bids for the Wilshire/Fairfax Station AUR Contract (C1055) were received on February 4, 2014 and are currently under evaluation. Contract award is planned for March 28, 2014.

## **PROJECT OVERVIEW & STATUS (Continued)**

The Wilshire/La Cienega AUR Contract (C1056) was advertised for bid on February 28, 2014. Price bids are due on April 9, 2014.

### **Construction**

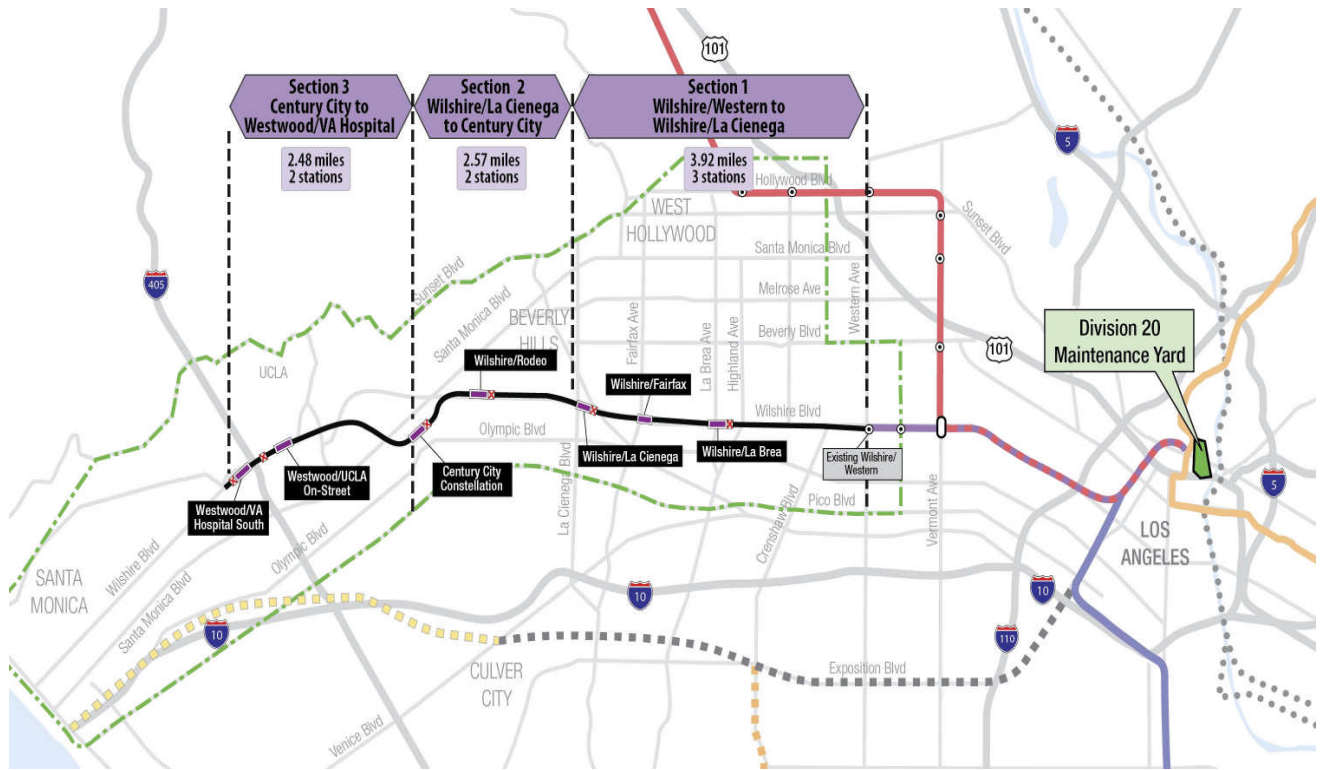
Excavation of the Fairfax Exploratory Shaft, Contract C1034, has progressed to the 66 foot level. Construction is anticipated to complete by the end of March 2014 followed by the start of the monitoring period.

The advanced utility relocations at Wilshire/La Brea, Contract C1048, are seven months into construction. Construction is anticipated to complete in late spring 2014.

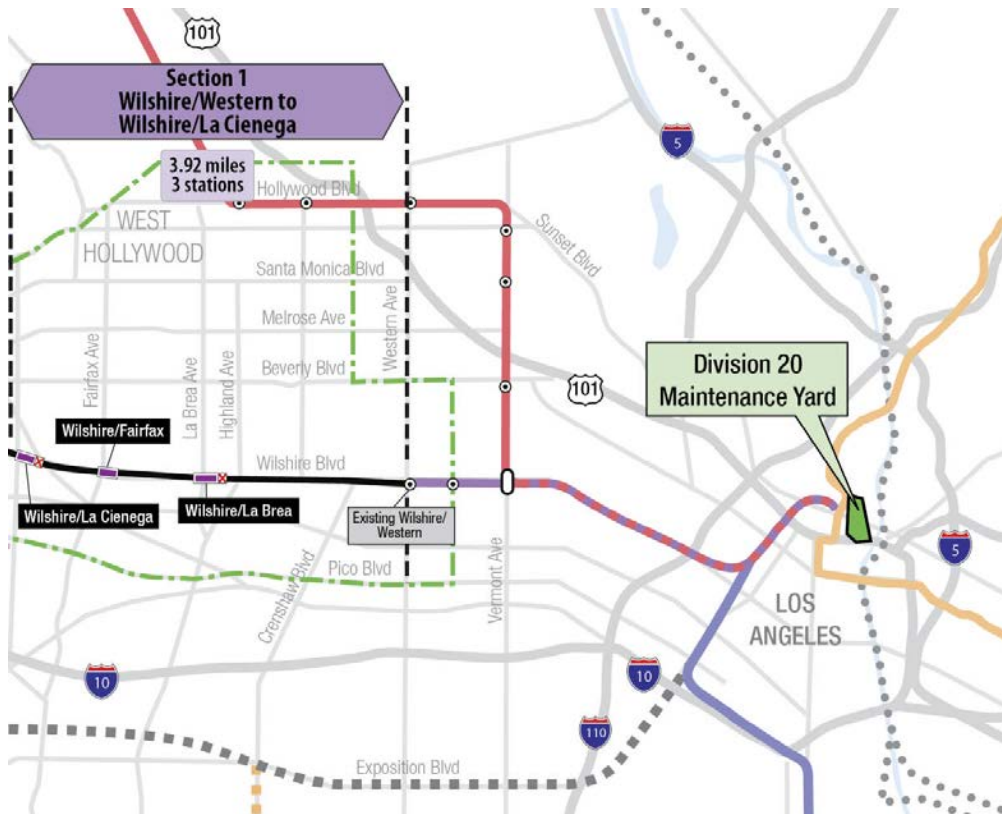
## **MANAGEMENT ISSUES**

No Management Issues this period.

## PROJECT ALIGNMENT by SECTIONS



### PROJECT ALIGNMENT SECTION 1



## **BASE PROJECT SCOPE**

Section 1 of the Westside Purple Line Extension Project is the first of three sections to be designed and constructed as part of the Los Angeles County Metropolitan Transportation Authority (LACMTA) Measure R Program. The program was approved by Los Angeles County voters in November 2008 and provides a half-cent sales tax to finance new transportation projects. In April 2012, the three sections of the Project were environmentally cleared and adopted by LACMTA Board of Directors.

Section 1 will extend the existing Purple Line by 3.92 miles beginning at the Wilshire/Western Station. From this station, the twin tunnel alignment will travel westerly within the existing Wilshire Boulevard right-of-way. Stations will be located at the intersections of Wilshire/La Brea, Wilshire/Fairfax, and Wilshire/La Cienega. All three of the station boxes will be located within the Wilshire Boulevard right-of-way with station portals extending to off-street entrances. Two of the stations, Wilshire/La Brea and Wilshire/Fairfax are within the jurisdiction of the City of Los Angeles. The Wilshire/La Cienega Station is within the City of Beverly Hills jurisdiction.

The Wilshire/La Brea Station box will be located under the center of Wilshire Boulevard in between Detroit Street and Orange Drive. A double crossover will be located east of the station box. The station entrance will be on the northwest corner of Wilshire Boulevard and La Brea Avenue.

The Wilshire/Fairfax Station box will be located under the center of Wilshire Boulevard west of Fairfax Avenue to west of Ogden Drive. The station entrance will be on the southeast corner of Wilshire Boulevard and Orange Grove Avenue.

The Wilshire/La Cienega Station box will be located under the center of Wilshire Boulevard immediately east of La Cienega Boulevard. A double crossover will be located east of the station box. The station entrance will be on the northeast corner of Wilshire Boulevard and La Cienega Boulevard. Since the station will be the terminus station for Section 1, tail tracks will be located west of the station box.

### **Contract C1034 – Wilshire/Fairfax Exploratory Shaft**

Metro is constructing an exploratory shaft to observe ground conditions prior to the award of Contract C1045. The location of the exploratory shaft is adjacent to the future Wilshire/Fairfax Station. The construction of the shaft includes furnishing and installing monitoring instruments, ventilation, and record and report instrumentation data during the excavation of the shaft. After construction of the shaft, the shaft will be maintained for an observation time period. Afterwards, the shaft will be dismantled and the site backfilled in a condition acceptable to the property owner.

## **BASE PROJECT SCOPE (Continued)**

### **Contract C1048 – Wilshire/La Brea Advanced Utility Relocations**

Relocate existing LADWP power, water utilities and a sewer line within the construction limits of the Wilshire/La Brea Station. The contractor is responsible for working in streets, procure materials, and coordinate with the utility owner. The contractor is to construct the new facilities in accordance with utility plans and specifications, provide traffic control, restore streets, and support utility crews installing cabling and during cut-over of the existing utilities.

### **Contract C1055 – Wilshire/Fairfax Advanced Utility Relocations**

Relocate existing LADWP power and water utilities within the construction limits of the Wilshire/Fairfax Station. The contractor is responsible for working in streets, procure materials, and coordinate with the utility owner. The contractor is to construct the new facilities in accordance with utility plans and specifications, provide traffic control, restore streets, and support utility crews installing cabling and during cut-over of the existing utilities.

### **Contract C1056 – Wilshire/La Cienega Advanced Utility Relocations**

Relocate existing City of Beverly Hills water, storm drain and sewer utilities within the construction limits of the Wilshire/La Cienega Station. The contractor is to obtain the necessary permits necessary for working in streets, procure materials, and coordinate with the utility owner. The contractor is to construct the new facilities in accordance with utility plans and specifications, provide traffic control, restore streets, and support utility crews during cut-over of the existing utilities.

### **Contract C1045 – Tunnels, Stations, Trackwork, Systems and Systems Integration Testing**

The procurement of this contract utilizes a two-step approach with the submittal of qualification statements through a Request for Qualification (RFQ) process, prequalification of qualified proposers followed by the release of a Request for Proposals (RFP) soliciting technical and price proposals with an option at Metro's discretion for Best and Final Offers (BAFO).

The Design/Build contract provides for final design and construction of the infrastructure along the 3.92 mile alignment. Contract scope includes demolition and removal of structures and clearing sites to facilitate construction operations. The structures to be constructed include twin bored tunnels, complete with cross-passages and walkways, including all mechanical, electrical and finish work. A retrieval shaft will be constructed to the west of the existing Wilshire/Western Station for extraction of the tunnel boring machines. Three underground stations are to be constructed, two with double-crossovers, and the terminus station to include tail tracks. Each station has a single entrance plaza with stairs, escalators and elevators which meet ADA requirements. The scope of work includes all architectural finishes, mechanical, electrical, systems and equipment including train control, traction power, communications, trackwork and the system tie-in to the existing Metro Purple Line, testing and commissioning.

## **BASE PROJECT SCOPE (Continued)**

### **Metro Furnished Equipment**

Metro will procure separate contacts to provide the 34 Heavy Rail Vehicles (HRV) and the Universal Fare System (UFS) necessary to operate the extension to the Purple Line. The scope of the HRV contract includes design, manufacturing, testing and delivery of the vehicles. The scope of the UFS contract includes design, fabrication and installation of equipment at the three stations and system testing.

### **Start Up**

The commencement of pre-revenue operations will be determined by Metro. Generally, all systems integration testing will have been completed and passed. All testing will be required to include and pass a “stress test” of maximum operational service levels to be acceptable. Pre-Revenue Operations include train runs, especially those involving multiple trains, on the integrated and fully operational extension; rehearsal of expected revenue operations scenarios; as well as abnormal and emergency scenarios in which random combinations of system interactions are tested; equipment “burned-in”; and training of Metro personnel who will eventually operate and maintain the extension and for emergency services personnel. Activities occurring during Pre-Revenue Operations are carried out by a designated Metro Project Rail Activation Group.

**KEY MILESTONES SIX- MONTH LOOK AHEAD**

	Milestone Date	Feb-12	Mar-12	Apr-12	May-12	Jun-12	Jul-12
C1055 Fairfax AUR - Bids Due	02/04/14	□					
LADWP Begin Cable Installation at La Brea	02/11/14	△					
C1056 La Cienega AUR - Advertise for Bids	02/21/14	◆					
Complete Final Design of AUR Utilities - La Cienega	03/07/14		○				
C1048 La Brea AUR - Complete Construction - Power	03/12/14		□				
C1034 Exploratory Shaft - Complete Shaft Construction	03/28/14		□				
C1034 Exploratory Shaft - Begin Monitoring Period	03/31/14		□				
C1045 Complete Proposal Evaluations / Oral Presentations	04/04/14			◆			
C1056 La Cienega AUR - Bids Due	04/09/14			□			
Complete Final Design of 3rd Party Utilities - La Brea	04/25/14			○			
C1055 Fairfax AUR - NTP	05/05/14				◆		
Obtain FTA FFGA	05/09/14				FTA		
C1048 La Brea AUR - Complete Construction - Water	05/29/14				□		
Complete Final Design of 3rd Party Utilities - Fairfax	06/09/14					○	
C1045 Board Approval to Award	06/26/14					Ⓜ	
C1055 Fairfax AUR - Begin Construction - Water / Power	07/16/14						□
C1056 La Cienega AUR - NTP	07/21/14						◆

◆ MTA Staff

Ⓜ MTA Board Action

FTA (Federal Transportation Authority)

△ Other Agencies

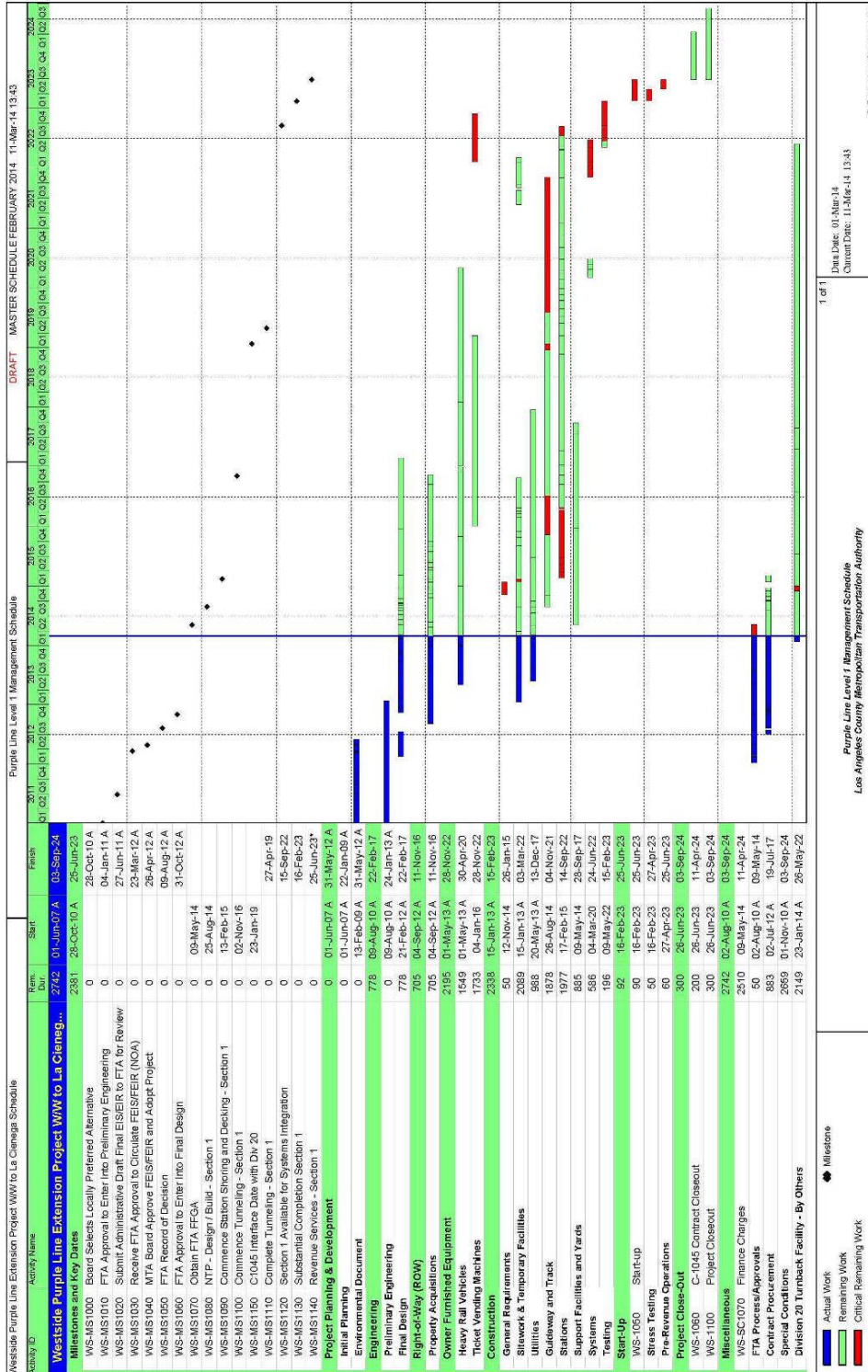
□ Contractors

○ PB

"A" following date is actual and completed

\* New

PROJECT SUMMARY SCHEDULE



## **CRITICAL PATH NARRATIVE**

### **Critical Path:**

The critical path for the Westside Purple Line Extension Project begins with the procurement process for the C1045 Design / Build contract, mobilization of the design team for the selected contractor, and the start of final design for station boxes and tunnels. Final design is concurrent with the La Brea advanced utilities that are being relocated under the C1048 contract and by third parties. Upon completion, the contractor begins installation of soldier piles, first on the north side of the La Brea station box, and then on the south side. Street decking is then installed, the station structural box is excavated, and invert concrete is placed. Tunneling then begins, first driving eastbound from Wilshire / La Brea to Wilshire / Western. TBMs are removed through a retrieval shaft at Wilshire / Western, re-assembled at Wilshire / La Brea, and then driven westbound to Wilshire / La Cienega. Following construction of cross passages, the critical path continues through construction of the Wilshire / Fairfax station box, installation of trackwork and traction power, systems integration and testing, and pre-revenue operations.

**PROJECT COST STATUS**

**COST REPORT**

DOLLARS IN THOUSANDS

DESCRIPTION	ORIGINAL BUDGET	CURRENT ESTIMATE		COMMITMENTS		EXPENDITURES		CURRENT FORECAST		ESTIMATE / FORECAST VARIANCE
		PERIOD	TO DATE	PERIOD	TO DATE	PERIOD	TO DATE	PERIOD	TO DATE	
ENGINEERING/CONSTRUCTION (465518 & 865518)	-	-	2,821,957	839	252,070	3,059	83,170	-	2,821,957	-
<b>465518 &amp; 865518 SUBTOTAL</b>	<b>-</b>	<b>-</b>	<b>2,821,957</b>	<b>839</b>	<b>252,070</b>	<b>3,059</b>	<b>83,170</b>	<b>-</b>	<b>2,821,957</b>	<b>-</b>
ENVIRONMENTAL/PLANNING - 405518	-	-	8,505	-	8,505	-	8,505	-	8,505	-
ENVIRONMENTAL/PLANNING - 465518	-	-	30,865	-	30,865	87	30,299	-	30,865	-
<b>405518 &amp; 465518 SUBTOTAL</b>	<b>-</b>	<b>-</b>	<b>39,370</b>	<b>-</b>	<b>39,370</b>	<b>87</b>	<b>38,803</b>	<b>-</b>	<b>39,370</b>	<b>-</b>
<b>TOTAL</b>	<b>-</b>	<b>-</b>	<b>2,861,327</b>	<b>839</b>	<b>291,439</b>	<b>3,146</b>	<b>121,973</b>	<b>-</b>	<b>2,861,327</b>	<b>-</b>

NOTE: EXPENDITURES ARE CUMULATIVE THROUGH JANUARY 2014

**PROJECT COST ANALYSIS**

**Original Budget**

The Original Budget will be established upon receipt of the FFGA, which is expected in early 2014.

**Current Estimate**

The Current Estimate is \$2.9 billion. A Current Budget will be established upon Board Approval of the Life-Of-Project budget.

**Current Forecast**

The Current Forecast is \$2.9 billion.

**Commitments**

The Commitments increased by \$0.8 million due to executed modifications associated with the Exploratory Shaft, Advanced Utility Relocations, and Engineering Management Support contracts. The Commitments represent Board Approved Budget through Fiscal Year 2014. The \$291.4 million in Commitments to date represents 10.2% of the Current Estimate.

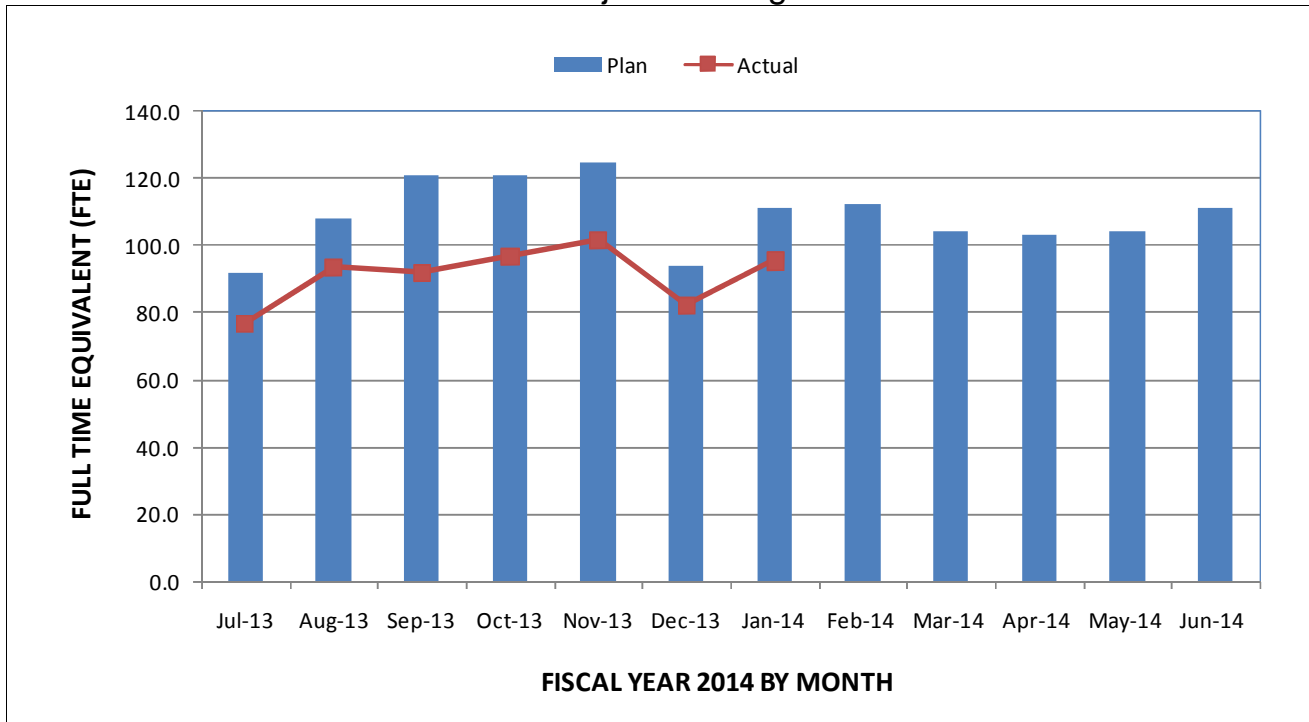
**Expenditures**

The expenditures are cumulative through January 2014. The expenditures increased by \$3.1 million this period primarily for costs associated with Advanced Utility Relocations, Exploratory Shaft, Engineering Management, Construction Management, and Metro Project Administration. The \$122.0 million in Expenditures to date represents 4.3% of the Current Estimate

## **FINANCIAL/GRANT STATUS**

Funding source chart will be provided upon adoption of the Life-of-Project Budget.

**STAFFING STATUS**  
Total Project Staffing - FTES

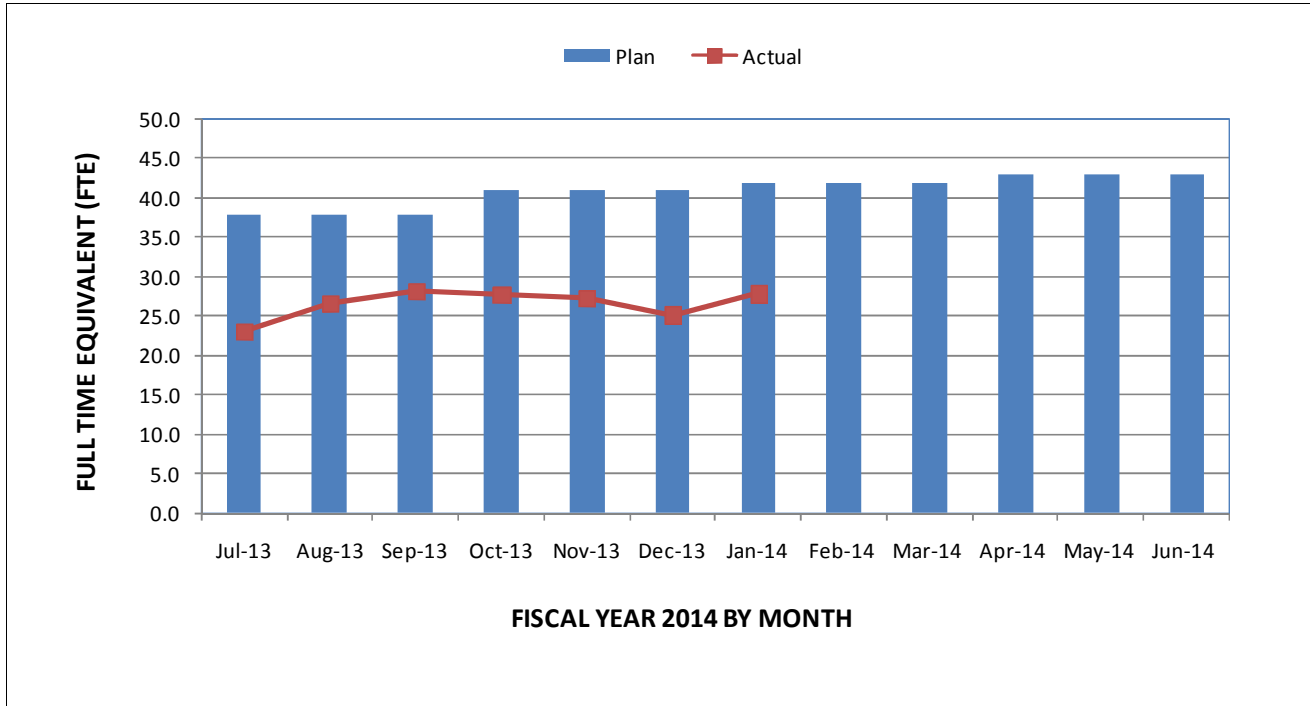


**TOTAL PROJECT STAFFING**

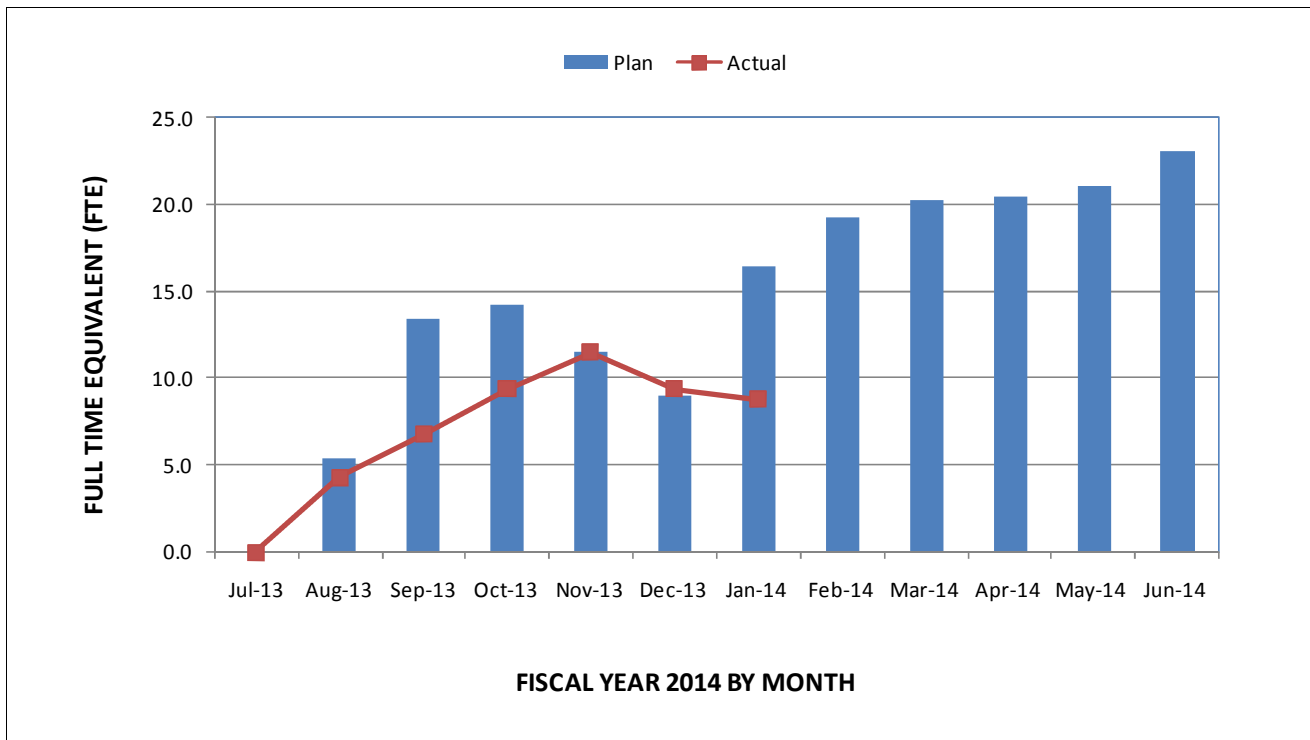
The overall FY14 Total Project Staffing plan averages 109.0 FTE's per month.

For January 2014, there were a total of 27.8 FTE's for MTA's Project Administration staff and 67.8 FTE's for consulting staff. The total project staffing for January 2014 was 95.6 FTEs.

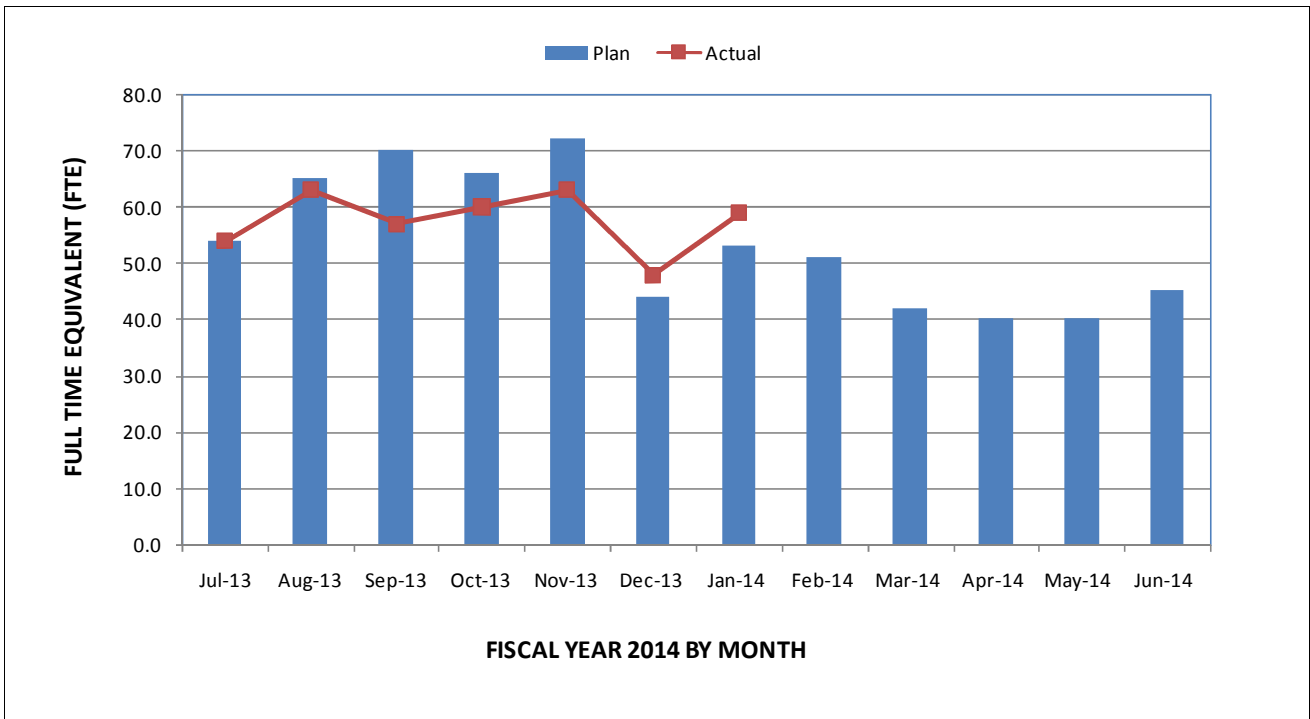
**STAFFING STATUS (Continued)  
METRO STAFFING – FTES**



**CONSTRUCTION MANAGEMENT  
SERVICES CONSULTANT – FTES**



**STAFFING STATUS (Continued)**  
**ENGINEERING MANAGEMENT SERVICES CONSULTANT – FTES**



**REAL ESTATE STATUS**

<b>Purple Line-Segment 1- Real Estate Status Summary January 2014</b>									
<b>Contract No.</b>	<b>Number of Parcels</b>	<b>Certified</b>	<b>Decertified</b>	<b>Appraisals In Process/ Completed</b>	<b>Offers Made</b>	<b>Agreements Signed</b>	<b>Condemnation Filed</b>	<b>Relocations Complete</b>	<b>Parcels Available</b>
Full Takes	19	19	0	17	13	0	1	0	0
Part Takes	5	3	0	1	2	0	0	0	0
TCE	3	0	1	0	0	0	0	0	0
<b>Sub Total Parcels:</b>	<b>27</b>	<b>22</b>	<b>1</b>	<b>18</b>	<b>15</b>	<b>0</b>	<b>1</b>	<b>0</b>	<b>0</b>
Relocations									
<b>Total Parcels:</b>	<b>27</b>	<b>22</b>	<b>1</b>	<b>18</b>	<b>15</b>	<b>0</b>	<b>1</b>	<b>0</b>	<b>0</b>

**QUALITY ASSURANCE STATUS**

**C1034 Exploratory Shaft**

- Attended weekly Project staff meetings with the Contractor.
- Reviewed and provided comments on submittals.
- Discussed inspection and testing procedures for upcoming activities.
- Coordinated special inspection as required by LA City Building and Safety.
- Coordination with CMSS Inspector.

**C1045 Segment 1 Design/Build**

- Attended bi-weekly Project staff meetings and pre-construction meetings.
- Met with the Project Design Quality Manager to discuss upcoming submittals and QA/QC schedule.

**C1048 Segment 1 Advanced Utility Relocations – La Brea**

- Attended weekly Project staff meetings with the Contractor.
- Reviewed and provided comments on submittals.
- Coordination with CMSS Inspector.

## **ENVIRONMENTAL STATUS**

- Continued environmental monitoring support for test shaft for VOC/GAS AQMD Rule 1116, 1150, construction SWPPP and noise.
- Noise and VOC monitoring in support of AUR Contracts and basic oversight on SWPPP requirements.
- Completed reassessment of the ambient noise levels for Wilshire Blvd.
- Continued review of contractor submittals for AUR Project and review contract specification packages for new AUR contracts.
- Continued review of Phase I ESA's for property acquisitions.
- Received draft and provided comments on OSHA Study and Odor Study.
- Provided Noise Awareness Training to LADWP construction crews.
- Met with City of LA, Bureau of Street Services regarding removing trees.
- Reviewed Health Risk Assessment and Remediation Action Workplan (RAW) reports.

## **CONSTRUCTION RELATIONS STATUS**

- Attended Pre-Construction Meetings, Construction Management Meetings, Advanced Utility Relocation Meetings, Exploratory Shaft Meetings, LADWP Coordination Meetings, Construction and Environmental Mitigation Meetings, Pre-Construction Survey Meetings and LADOT Coordination Meetings.
- Produced and distributed work notices for advance utility relocations at Wilshire/ La Brea and Wilshire/Fairfax.
- Gave project presentations to Academy of Motion Picture Arts and Sciences Museum, La Cienega Station Community Meeting, Miracle Mile Chamber of Commerce, Wilshire La Brea apartment complex, BMW of Wilshire/La Cienega, Saban Theater/Temple of the Arts and Cedar-Sinai.
- Addressed maintenance issue at Blockbuster property at La Brea address, sent soil maintenance and hauling requirements to resident, addressed questions regarding noise and access for businesses around La Cienega Station, worked with Council District 4 and City of Los Angeles for increased maintenance and trash facilities at Crenshaw Yard, removed project signs from Loraine Avenue, worked with LADWP crews to keep access open along Sycamore, requested the fiber contractor use sounds blankets around nighttime work area.
- Worked with Council District 4 to get additional trashcans around the Wilshire/Crenshaw yard.
- Updated Facebook/Twitter Website as needed.

## **CREATIVE SERVICES STATUS**

### Art Program

- Briefing sessions for Curatorial Advisory Panelists.
- Hosted three artist workshops.
- Ongoing community outreach.
- Issued call for Prequalified Artist Pool.

## **SAFETY & SECURITY STATUS**

- There were no recordable injuries on the Project during February 2014.
- Safety Staff participated in weekly progress meetings and scheduled readiness review meetings to ensure compliance with approved Work Plans and contract specifications.
- Monitored construction activities (Advanced Utility Relocations and Exploratory Shaft) to ensure contractor compliance with contract specifications.
- Safety Staff completed work with Procurement and Program Management staff to prepare documents for upcoming advanced utility relocations, facility design and design/build contract packages.
- Safety Staff continues to work with Program Management and Construction Relations to address issues related to public concerns regarding noise and traffic hazards.
- Providing Safety and Security Contract Compliance oversight during day and night shifts.
- Work Hour and Injury statistics will be reported on a quarterly basis due to the low number of work hours accumulating.

**THIRD PARTY AGREEMENT STATUS**

<b>Third Party</b>	<b>Type of Agreement</b>	<b>Forecast Execution Date</b>	<b>Required Need Date</b>	<b>Status/ Comments</b>
City of Los Angeles	Amendment to Master Cooperative Agreement	N/A	N/A	Parties will work under 2003 MCA.
City of Beverly Hills	MCA	3/14	3/14	Metro is reviewing comments received from City of Beverly Hills.
Los Angeles Department of Water and Power	Amendment to Memorandum of Understanding	N/A	N/A	Metro and LADWP will continue to work under the terms of the previous Cooperative Agreement.
Los Angeles County Public Works	Letter of Agreement	4/11	3/12	Executed
Caltrans	Amendment	8/11	3/12	Executed
Private Utilities	LOA, MOU or UCA	3/14	N/A	Metro is working with affected third party utilities under existing agreements except for Qwest, Time Warner and Level 3 of which comments have been received by Metro from each utility to establish a new MCA. Metro County Counsel is reviewing comments.

**ADVANCED UTILITY RELOCATION STATUS**

- C1055 AUR for Wilshire/Fairfax Station area to be awarded on 3/28/14.
- CES has begun fiber relocations at Wilshire/Fairfax Station area.
- LADWP Power has begun cable pulling at the Wilshire/La Brea Station site.

## **PEAK HOUR AND NIGHTTIME CONSTRUCTION VARIANCES**

Metro is actively pursuing extended hour variances/exemptions to accommodate the Project needs. Metro staff is working with the City of Los Angeles Bureau of Engineering and the Los Angeles Police Commission to obtain Peak Hour Exemption and Night Time Work Variance. Current efforts center around extending the existing extended hour permits to accommodate extended hour variances to allow night work and weekend work to accommodate the La Brea and Fairfax soldier pile and decking installation for the D/B contract; and processing of peak hour variance via approved WTCP's to accommodate Metro's D/B soldier pile installation scope at all three stations.

- The Peak Hour Exemption for Wilshire/La Brea pile installation was approved by the City of Los Angeles on November 8, 2013.
- The Nighttime Work Variance for the Wilshire/La Brea and Wilshire/Fairfax Advanced Utility Relocation work was extended to April 14, 2014.

## **CHRONOLOGY OF EVENTS**

June 2007	Began Alternatives Analysis study
January 2009	Board approval of Alternatives Analysis study and next phase
February 2009	Began Draft Environmental Impact Statement / Report (EIS / EIR)
October 2010	Board approval of Draft EIS / EIR and selection of locally preferred alternative
January 2011	FTA approval to enter Preliminary Engineering
May 2011	Began Preliminary Engineering
April 2012	Board certification of Final EIS / EIR and adoption of project
July 2012	Completion of Exploratory Shaft final design
August 2012	FTA Record of Decision
September 2012	Began Real Estate Acquisition
November 2012	Began Final Design - C1048 - Advanced Utilities Relocation contract - La Brea
November 2012	Began Final Design - C1055 - Advanced Utilities Relocation contract - Fairfax
November 2012	Issued RFQ for C1045 Design / Build contract
December 2012	Began Final Design - C1056 - Advanced Utilities Relocation contract - La Cienaga
January 2013	Began C1034 Exploratory Shaft construction
February 2013	Received RFQ responses for C1045 Design / Build contract

### **CHRONOLOGY OF EVENTS (Continued)**

June 2013	Issued RFP for C1045 Design/Build Contract
June 2013	Beginning of C1055 AUR Fairfax Bid Period
July 2013	Submitted draft FFGA application
July 2013	Completed Final Design - C1048 - Advanced Utilities Relocation contract La Brea
July 2013	Submitted TIFIA loan application
August 2013	Began C1048 Advanced Utilities Relocation at La Brea
August 2013	NTP for Construction Management Services Contract
January 2014	Submitted application to FTA requesting an FFGA.
January 2014	Received RFP Proposals for Contract C1045.
February 2014	Beginning of C1056 AUR La Cienega Bid Period.

**CONTRACT C1034 STATUS**

<p><b>Description: Exploratory Shaft</b> <b>Contractor: Innovative Construction Solutions (ICS)</b></p>	<p><b>Contract No. C1034</b> <b>Status as of: February 28, 2014</b></p>																													
<p><b>Progress / Work Completed:</b></p> <ul style="list-style-type: none"> <li>- Notice to Proceed: 01/15/13</li> <li>- Demolition / site preparation: 04/05/13 - 06/17/13</li> <li>- Site Utilities: 05/06/13 - 09/04/13</li> <li>- Soldier Piles: 07/05/13 - 08/27/13</li> <li>- Shaft excavation started: 09/03/13</li> <li>- Shaft excavation to 15' depth: 10/18/13</li> <li>- Shaft excavation to 20' depth: 11/01/13</li> <li>- Shaft excavation to 32' depth: 11/30/13</li> <li>- Shaft excavation to 44' depth: 12/27/13</li> <li>- Shaft excavation to 58' depth: 01/31/14</li> <li>- Shaft excavation to 66' depth: 02/28/14</li> </ul> <p><b>Areas of Concern:</b></p>	<p><b>Major Activities (In Progress):</b></p> <ul style="list-style-type: none"> <li>- Shaft excavation to bottom of pit</li> <li>- Install steel platforms and stairs</li> <li>- Install shotcrete lagging / rebar</li> <li>- Gas monitoring</li> </ul> <p><b>Major Activities Next Period:</b></p> <ul style="list-style-type: none"> <li>- Complete shaft excavation</li> <li>- Install steel platforms and stairs</li> <li>- Install shotcrete lagging / rebar</li> <li>- Install deck beam</li> <li>- Install sump pump</li> <li>- Install shaft observation equipment</li> <li>- Gas monitoring</li> </ul>																													
<p><b>Schedule Summary:</b></p> <p>Date of Award: 11/26/12          Notice to Proceed: 01/15/13          Original Contract Duration: 669 CD          Current Contract Duration: 624 CD          Elapsed Time from NTP: 411 CD</p>	<table border="1"> <thead> <tr> <th></th> <th>Original Contract Dates</th> <th>Time Extension</th> <th>Current Contract</th> <th>Forecast</th> <th>Variance CDs</th> </tr> </thead> <tbody> <tr> <td>Notice to Proceed</td> <td>01/15/13</td> <td>0</td> <td>01/15/13</td> <td>01/15/13</td> <td>0</td> </tr> <tr> <td>Milestone 1: Shaft Completion</td> <td>02/13/14</td> <td>16</td> <td>03/01/14</td> <td>03/28/14</td> <td>-27</td> </tr> <tr> <td>Milestone 2: Substantial Completion</td> <td>11/14/14</td> <td>14</td> <td>11/28/14</td> <td>09/30/14</td> <td>59</td> </tr> </tbody> </table>							Original Contract Dates	Time Extension	Current Contract	Forecast	Variance CDs	Notice to Proceed	01/15/13	0	01/15/13	01/15/13	0	Milestone 1: Shaft Completion	02/13/14	16	03/01/14	03/28/14	-27	Milestone 2: Substantial Completion	11/14/14	14	11/28/14	09/30/14	59
	Original Contract Dates	Time Extension	Current Contract	Forecast	Variance CDs																									
Notice to Proceed	01/15/13	0	01/15/13	01/15/13	0																									
Milestone 1: Shaft Completion	02/13/14	16	03/01/14	03/28/14	-27																									
Milestone 2: Substantial Completion	11/14/14	14	11/28/14	09/30/14	59																									
<p><b>Physical Percent Complete:</b></p> <p>Physical completion as of 02/28/14: 76%*</p> <p>* Note: Physical completion assessment reflects work completed and work in progress.</p>	<p><b>Cost Summary: \$ In millions</b></p> <table> <tr> <td>1. Award Value:</td> <td>6.5</td> </tr> <tr> <td>2. Executed Modifications:</td> <td>0.4</td> </tr> <tr> <td>3. Approved Change Orders:</td> <td>0.0</td> </tr> <tr> <td>4. Current Contract Value (1+2+3):</td> <td>6.9</td> </tr> <tr> <td>5. Incurred Cost:</td> <td>4.9</td> </tr> </table>						1. Award Value:	6.5	2. Executed Modifications:	0.4	3. Approved Change Orders:	0.0	4. Current Contract Value (1+2+3):	6.9	5. Incurred Cost:	4.9														
1. Award Value:	6.5																													
2. Executed Modifications:	0.4																													
3. Approved Change Orders:	0.0																													
4. Current Contract Value (1+2+3):	6.9																													
5. Incurred Cost:	4.9																													

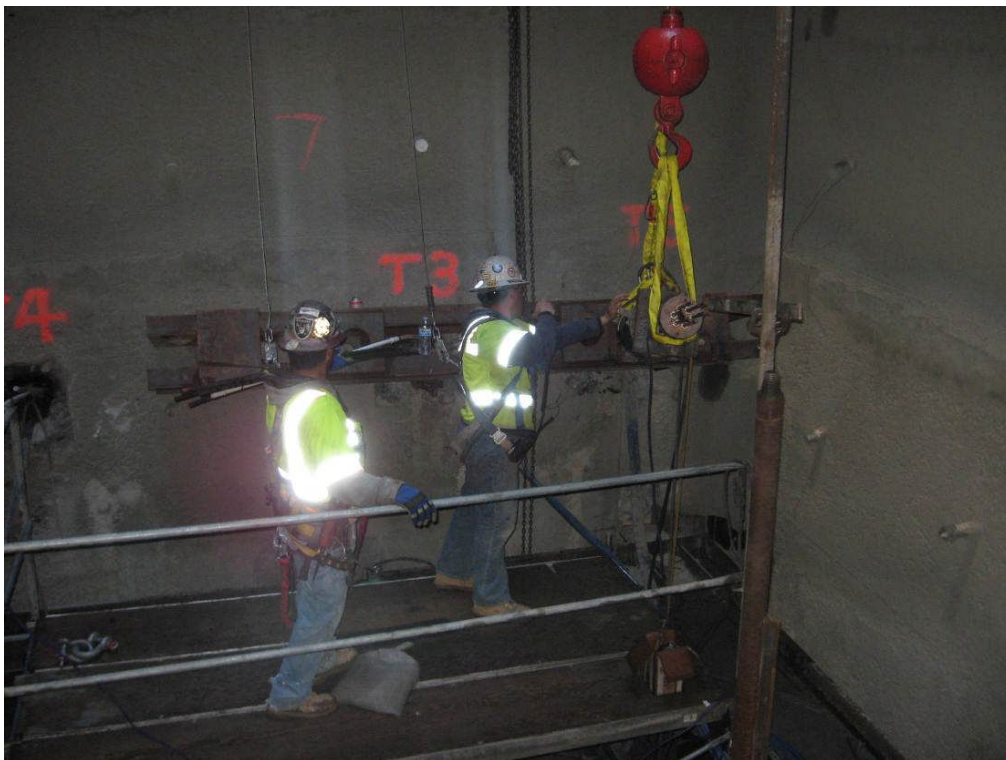
**CONTRACT C1048 STATUS**

<p><b>Description: AUR - La Brea</b> <b>Contractor: Metro Builders &amp; Engineers Group, Ltd.</b></p>	<p><b>Contract No. C1048</b> <b>Status as of: February 28, 2014</b></p>															
<p><b>Progress / Work Completed:</b></p> <p>Procurement: elect conduit / vaults / hydrants / pipe / fittings Preparation for and power relocation at:</p> <ul style="list-style-type: none"> <li>- Orange Drive - South of Wilshire</li> <li>- Intersection of Orange and Wilshire</li> <li>- Wilshire to Sycamore Ave.</li> <li>- Sycamore Ave - North of Wilshire</li> <li>- Sycamore Ave - South of Wilshire</li> <li>- Wilshire and La Brea</li> </ul> <p>Preparation for water relocation at:</p> <ul style="list-style-type: none"> <li>- Wilshire and La Brea</li> </ul> <p><b>Areas of Concern:</b></p>	<p><b>Major Activities (In Progress):</b></p> <p>At various locations throughout La Brea Station area:</p> <ul style="list-style-type: none"> <li>- Traffic control</li> <li>- Site preparation / excavation / shoring</li> <li>- Conduit installation</li> <li>- Encase conduit</li> <li>- Slurry backfill</li> <li>- Vault Installation</li> <li>- Pavement Restoration</li> </ul> <p><b>Major Activities Next Period:</b></p> <p>At various locations throughout La Brea Station area:</p> <ul style="list-style-type: none"> <li>- Traffic control</li> <li>- Continue site preparation / excavation / shoring</li> <li>- Continue conduit installation</li> <li>- Continue encase conduit</li> <li>- Continue slurry backfill</li> <li>- Continue vault installation</li> <li>- Hydrant / water line installation</li> </ul>															
<p><b>Schedule Summary:</b></p> <p>Date of Award: 05/13/13 Notice to Proceed: 08/01/13 Original Contract Duration: 230 CD Current Contract Duration: 302 CD Elapsed Time from NTP: 213 CD</p>		Original Contract Dates	Time Extension	Current Contract	Forecast	Variance CDs										
	Notice to Proceed	08/01/13	0	08/01/13	08/01/13	0										
	Milestone 1: Completion of LADWP Power Work	12/28/13	0	12/28/13	03/12/14	-74										
	Milestone 2: Substantial Completion	03/18/14	0	03/18/14	05/29/14	-72										
<p><b>Physical Percent Complete:</b></p> <p>Physical completion as of 02/28/14: 50%*</p> <p>* Note: Physical completion assessment reflects work completed and work in progress.</p>	<p><b>Cost Summary: \$ In millions</b></p> <table border="0"> <tr> <td>1. Award Value:</td> <td>6.2</td> </tr> <tr> <td>2. Executed Modifications:</td> <td>0.3</td> </tr> <tr> <td>3. Approved Change Orders:</td> <td>0.0</td> </tr> <tr> <td>4. Current Contract Value (1+2+3):</td> <td>6.5</td> </tr> <tr> <td>5. Incurred Cost:</td> <td>2.6</td> </tr> </table>						1. Award Value:	6.2	2. Executed Modifications:	0.3	3. Approved Change Orders:	0.0	4. Current Contract Value (1+2+3):	6.5	5. Incurred Cost:	2.6
1. Award Value:	6.2															
2. Executed Modifications:	0.3															
3. Approved Change Orders:	0.0															
4. Current Contract Value (1+2+3):	6.5															
5. Incurred Cost:	2.6															

## CONSTRUCTION PHOTOGRAPHS



View of Exploratory Shaft 3<sup>rd</sup> Lift of Waler Beams and Catwalk



Exploratory Shaft Excavation Testing of Tie-backs

## **CONSTRUCTION PHOTOGRAPHS**



Nighttime Work at Wilshire/La Brea Intersection by the C1048 AUR Contractor

**APPENDIX  
COST AND BUDGET TERMINOLOGY**

**Project Cost Descriptions**

ORIGINAL BUDGET	The Original Project Budget as authorized by the Metropolitan Transportation Authority (Metro) Board (to be established).
CURRENT BUDGET	The Original Budget plus all budget amendments approved by formal Metro Board action. Also referred to as Approved Budget.
COMMITMENTS	The total of actual contracts awarded, executed change orders or amendments, approved work orders of Master Cooperative Agreements, offers accepted for purchase of real estate, and other Metro actions which have been spent or result in the obligation of specific expenditures at a future time.
EXPENDITURES	The total dollar amount of funds expended by Metro for contractor or consultant services, third party services, staff salaries, real estate and other expenses that is reported in Metro's Financial Information System (FIS).
CURRENT FORECAST	The best estimate of the final cost of the Project when all checks have been issued and the Project is closed out. Current Forecast is composed of actual costs incurred to date, the best estimate of work remaining and a current risk assessment for each budgeted cost item.

**Cost Report by Element Descriptions**

CONSTRUCTION	Includes construction contracts. Cost associated with Guideways, Stations, Southwestern Yard, Sitework/Special Conditions and Systems.
RIGHT-OF-WAY	Includes purchase cost of parcels, easements, right-of-entry permits, escrow fees, contracted real estate appraisals and tenant relocation.
VEHICLES	Includes the purchase of Heavy Rail Vehicles and spare parts for the Project.
PROFESSIONAL SERVICES	Includes design engineering, project management assistance, construction management support services, legal counsel, agency staff costs, and other specialty consultants.
CONTINGENCY	A fund established at the beginning of a project to provide for anticipated but unknown additional costs that may arise during the course of the Project.
PROJECT REVENUE	Includes all revenue received by Metro as a direct result of project activities. This includes cost sharing construction items, insurance premium rebates, and the like.

**APPENDIX  
LIST OF ACRONYMS**

ATC	Automatic Train Control
ATSAC	Automated Traffic Surveillance and Control
BAFO	Best and Final Offer
BIM	Building Information Modeling
BNSF	Burlington Northern Santa Fe Railway Company
BRT	Bus Rapid Transit
CADD	Computer Aided Drafting and Design
CALTRANS	California Department of Transportation
CCTV	Closed Circuit Television
CD	Calendar Day
CEQA	California Environmental Quality Act
CM	Construction Manager
CMAQ	Congestion Mitigation and Air Quality Improvement Program
CMSC	Construction Management Services Consultant
CN	Change Notice
CO	Change Order
COBH	City of Beverly Hills
COLA	City of Los Angeles
CPM	Critical Path Method
CPUC	California Public Utilities Commission
CR	Camera Ready
CSPP	Construction Safety Phasing Plan
CTC	California Transportation Commission
CUD	Contract Unit Description
DB	Design Build
DBB	Design Bid Build
DOT	Department of Transportation
DWP	Department of Water and Power
EIR	Environmental Impact Report
EIS	Environmental Impact Statement
EMSC	Engineering Management Services Consultant
EPBM	Earth Pressure Balance Machine
FAA	Federal Aviation Administration
FAR	Federal Acquisition Regulation
FD	Final Design
FEIS	Final Environmental Impact Statement
FEIR	Final Environmental Impact Report
FIS	Financial Information System
FLSR	Fire Life Safety Report
FONSI	Finding of No Significant Impact
FRA	Federal Railroad Administration
FSEIR	Final Supplemental Environmental Impact Report
FSEIS	Final Supplemental Environmental Impact Statement

**APPENDIX  
LIST OF ACRONYMS (Continued)**

FTA	Federal Transit Administration
FTE	Full Time Equivalent
GBR	Geotechnical Baseline Report
GDSR	Geotechnical Design Summary Report
HMM	Hatch Mott MacDonald
HRT	Heavy Rail Transit
HRV	Heavy Rail Vehicle
IFB	Invitation for Bid
IPMO	Integrated Project Management Office
JV	Joint Venture
LA	Los Angeles
LABOE	Los Angeles Bureau of Engineering
LABOS	Los Angeles Bureau of Sanitation
LABSL	Los Angeles Bureau of Street Lighting
LACFCD	Los Angeles County Flood Control District
LACMTA	Los Angeles County Metropolitan Transportation Authority
LADOT	Los Angeles Department of Transportation
LADPW	Los Angeles Department of Public Works
LADWP	Los Angeles Department of Water and Power
LAUSD	Los Angeles Unified School District
LAWA	Los Angeles World Airports
LAX	Los Angeles International Airport
LNTP	Limited Notice To Proceed
LONP	Letter Of No Prejudice
LOP	Life-of-Project
LPA	Locally Preferred Alternative
LRTP	Long Range Transportation Plan
LRV	Light Rail Vehicle
MCA	Master Cooperative Agreement
MIS	Major Investment Study
MOU	Memorandum of Understanding
MPSR	Monthly Project Status Report
N/A	Not Applicable
NEPA	National Environmental Protection Act
NOD	Notice of Determination
NPDES	National Pollution Discharge Elimination System
NTE	Not to Exceed
NTP	Notice To Proceed
OCC	Operations Control Center
OSHA	Occupational Health and Safety Administration
PA/VMS	Public Address/Visual Messaging Sign
PE	Preliminary Engineering

**APPENDIX  
LIST OF ACRONYMS (Continued)**

PEER	Permit Engineering Evaluation Report
PIP	Project Implementation Plan
PLA	Project Labor Agreement
PM	Project Manager
PMIP	Project Management Implementation Plan
PMOC	Project Management Oversight Consultant
PMP	Project Management Plan
P&P	Policies & Procedures
PR	Project Report
PSR	Project Study Report
QA	Quality Assurance
QAR	Quality Assurance Report
QC	Quality Control
QPSR	Quarterly Project Status Report
QTIB	Qualified Transit Improvement Bonds
RAMP	Real Estate Acquisition Management Plan
RCHAR	Rail Crossing Hazards Analysis Report
RCMP	Risk Assessment Management Plan
RFC	Request For Change
RFP	Request For Proposals
RFSC	Request for Special Consideration
RHA	Risk Hazard Analysis
RLPE	Red Light Photo Enforcement
ROC	Rail Operations Center
ROD	Record Of Decision
ROM	Rough Order of Magnitude
ROW	Right-Of-Way
RPZ	Runway Protection Zone
RSD	Revenue Service Date
SAV	Stand Alone Validator
SCAQMD	Southern California Air Quality Management District
SCADA	Supervisory Control and Data Acquisition
SCC	Standard Cost Category
SCE	Southern California Edison
SCG	Southern California Gas Company
SCRRA	Southern California Regional Rail Authority
SHA	State Highway Account
SHPO	State Historic Preservation Office
SIT	System Integration Testing
SOQ	Statement of Qualification
SOV	Schedule Of Value
SOW	Statement Of Work

**APPENDIX  
LIST OF ACRONYMS (Continued)**

SP	Special Provision
SSMP	Safety and Security Management Plan
STB	Surface Transportation Board
STIP	State Transportation Improvement Program
STP	Surface Transportation Program
STV	STV Group
TBD	To Be Determined
TBM	Tunnel Boring Machine
TCE	Temporary Construction Easement
TCRP	Traffic Congestion Relief Program
TIFIA	Transportation Infrastructure Finance and Innovation Act
TIGER	Transportation Investment Generating Economic Recovery
TPSS	Traction Power Substation
TRACS	Transit Automatic Control System
TVA	Threat Vulnerability Analysis
TVM	Ticket Vending Machine
UFS	Universal Fare System
USDOT	United States Department Of Transportation
VE	Value Engineering
WBS	Work Breakdown Structure
WP	Work Package
YOE	Year of Expenditure