

Welcome!

We will begin in a few moments.

Equity Working Group Meeting #2

April 19, 2022



Metro

We're developing a new vision for the 710 corridor.

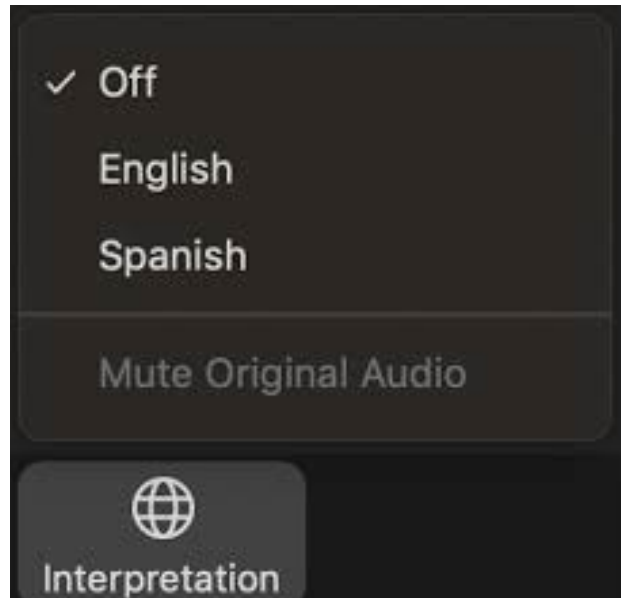
710 TASK FORCE



Interpretation/ *Interpretación*



- > Click the **Interpretation** icon in your meeting controls to enter an *English or Spanish* room
- > (Optional) To hear the interpreted language only, click **Mute Original Audio**



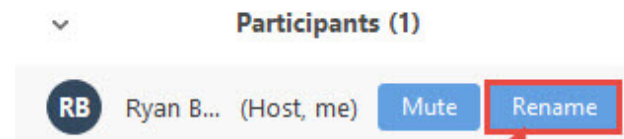
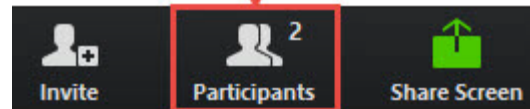
- > Haga clic en el ícono de Interpretación en los controles de su reunión para ingresar a una sala en inglés o español
- > (Opcional) Para escuchar solo el idioma interpretado, haga clic en “**Mute Original Audio**” o “**Silenciar audio original**”

Task Force/CLC Member Identification

Task Force and CLC Members, please change your Zoom screen name to include: Name, and whether you are a Task Force or CLC Member

1

After launching the Zoom meeting, click on the "Participants" icon at the bottom of the window.



2

In the "Participants" list on the right side of the Zoom window, hover over your name and click on the "Rename" button.

Raise Hand / *Levantarse la mano*



- > Click **Raise Hand** in your meeting controls or
- > **Press*9** on the phone line.
- > To lower your hand, click **Raise Hand** in your meeting controls.
- > Comments & questions can also be provided in writing by using the **Chat** function.
- > The **Chat** button is located on the control panel at the bottom of your screen.

- > **You can also physically raise your hand while your video is on and the speaker will call on you**

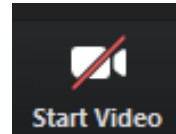
- > *Haga clic en “**Raise Hand**” o “**Levantarse la mano**” en los controles de la reunión o*
- > ***Presiona *9** en la línea telefónica.*
- > *Para bajar la mano, haga clic en “**Raise Hand**” o “**Levantarse la mano**” en los controles de la reunión.*
- > *Los comentarios y las preguntas también se pueden proporcionar por escrito mediante la función de **Chat**.*
- > *El botón **Chat** se encuentra en el panel de control en la parte inferior de la pantalla.*
- > ***También puede levantar físicamente la mano mientras su video está encendido y el orador/la oradora lo llamará***

Zoom Tips / Consejos de Zoom

- > To **mute** and **unmute**, click the microphone icon on the bottom left of your control panel



- > To **start** and **stop** your video, click the camera icon at the bottom left of your control panel



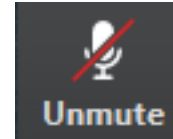
- > To switch between views during the meeting click or tap on **Standard**, **Side-by-side Speaker View**, and **Side-by-side Gallery View** at the top right corner of your zoom screen

Tech Support - Google phone line/text

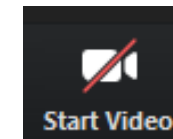
- > Phone: 323.609.3345
- > monitoring, translation support



- > Para **silenciar** y **cancelar el silencio**, haga clic en el ícono del micrófono en la parte inferior izquierda de su panel de control



- > Para **iniciar** y **detener** su video, haga clic en el ícono de la cámara en la parte inferior izquierda de su panel de control.



- > Para cambiar entre vistas durante la reunión, haga clic o toque **Estándar**, **Vista de orador en paralelo** y **Vista de Galería en Paralelo** en la esquina superior derecha de la pantalla de zoom.

Soporte técnico: línea telefónica/texto de Google

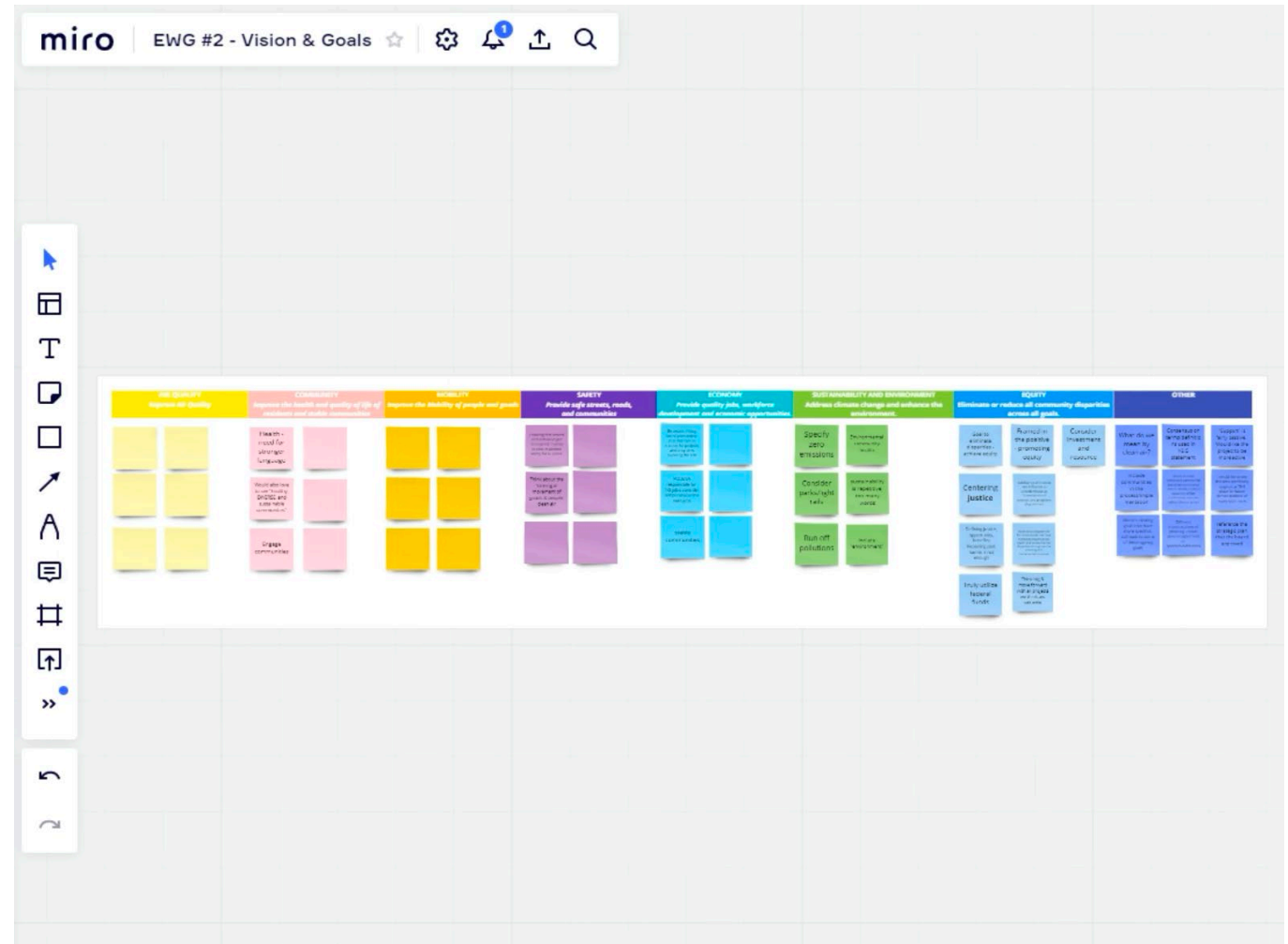
- > Teléfono: 323.609.3345
- > seguimiento, soporte de traducción

Miro Board

https://miro.com/app/board/uXjVO8AkAyk=?share_link_id=671699474188

Tips for using Miro Board:

- Press space bar and click mouse to maneuver around the board
- Zoom accessibility is located on the bottom left corner of the board
- Double click a colored sticky note to populate a comment
- Refrain from erasing or editing other entries
- If a phone is being used, the app will need to be downloaded



Welcome!

Metro and Consultant Team



KeAndra Cylear Dodds

LA Metro, Equity and Race



Jessica Medina

LA Metro, Equity and Race



Michael Cano

LA Metro, Countywide Planning



Ernesto Chaves

LA Metro, Highway Programs



Lilian De Loza-Gutierrez

LA Metro, Community Relations



Susan Ambrosini

AECOM, Equity Team

Agenda

- 5:00 pm Welcome, Project Team Introductions, Agenda, and Meeting Objectives (10 min)**
- 5:10 pm Agenda Item #1: Defining Equity: Continued Discussion (15 min)**
- 5:25 pm Agenda Item #2: Vision, Goals & Objectives Approach and Equity Guiding Principle (30 min)**
- 5:55 pm Agenda Item #3: Interactive Discussion on Preliminary Vision Statement & Goals (30 min)**
- 6:25 pm Agenda Item #4: Consensus Building/Formal Recommendations to Task Force (30 min)**
- 6:55 pm Closing Comments, Next Steps, and Thank You (5 min)**

Detailed Agenda

- > **5:00 pm Welcome, Project Team Introductions, Agenda Review, Meeting Objectives** (10 minutes)
 - EWG #1 Recap and Vision & Goals Development Background Information
- > **5:10 pm Agenda Item #1: Defining Equity: Continued Discussion** (15 min)
 - Detailed definitions of equity building on previous EWG and Task Force discussions
- > **5:25 pm Agenda Item #2: Vision, Goals & Objectives Approach and Equity Guiding Principle** (30 min)
 - Discuss proposal to include Equity as Guiding Principle within Vision, Goals & Objectives Structure
- > **5:55 pm Agenda Item #3: Interactive Discussion on Preliminary Vision Statement & Goals** (30 min)
 - Provide input and share ideas on Preliminary Vision Statement & Goals
- > **6:25 pm Agenda Item #4: Consensus Building/Recommendations to Task Force** (30 min)
 - Discussion: Can we reach consensus and make formal recommendations to Task Force on:
 - > Whether to convert Equity from Goal to Guiding Principle?
 - > The Preliminary Vision Statement and Goals?
- > **6:55 pm Closing Comments, Next Steps, and Thank You** (5 minutes)

Equity Working Group Meeting #1 Recap

Summary

- > Held virtually via Zoom on Tuesday, April 5th
- > 24 participants (17 Task Force Members, 7 CLC Members)
- > Meeting topics included:
 - Discussed the role of the EWG and opportunities for member involvement
 - Reviewed Metro's Equity definition and important terms, and the Equity Planning and Evaluation Tool (EPET)
 - Discussed equity challenges, concerns, and opportunities
 - Discussed opportunities to consider equity in the 710 South Corridor Vision & Goals

Highlights

- ✓ EWG identified day-to-day challenges of living, working, and attending school adjacent to the freeway corridor, such as traffic congestion, pollution, noise, and health impacts
- ✓ Interactive discussion focused on top 3 priorities: air quality, sustainability and environment, and equity
- ✓ Emphasized importance of equity in the context of bridging language and technology barriers to engage communities where they are

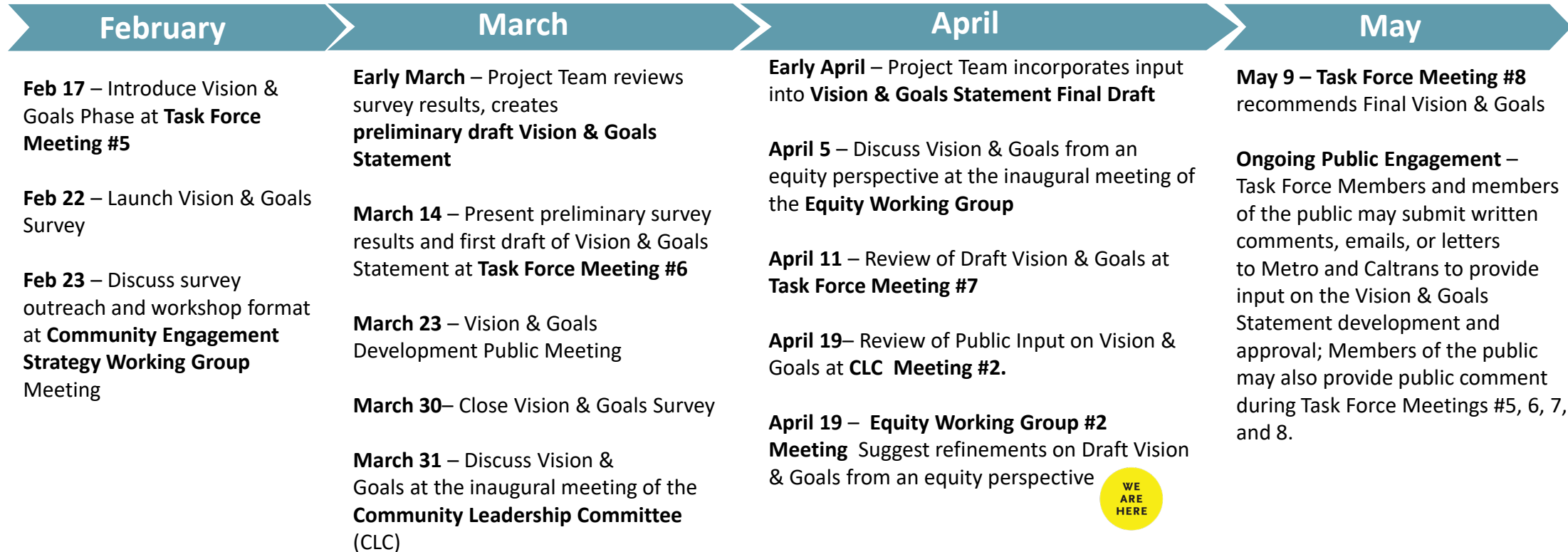
Meeting Objectives

During this meeting, the working group will:

- Continue discussion of equity and justice
- Discuss Vision, Goals & Objectives Approach and proposal to introduce Equity Guiding Principle
- Review and discuss Preliminary Vision Statement and Goals
- Engage in consensus building and make formal recommendations to Task Force

710 Vision Statement & Goals Development Timeline

This twelve-week timeline shows key activities and dates for the 710 Task Force Vision Statement & Goals Development.



Basis for Draft Vision and Goal Development



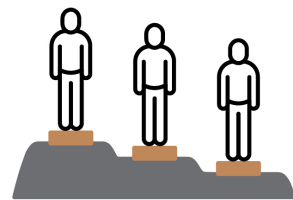
- > Existing Conditions Information
- > Task Force Discussions and Input
 - March 14th Task Force Meeting Discussion
 - Task Force Vision & Goals Input Form
- > Public Input
 - Vision & Goals Survey
 - March 23rd Vision & Goals Development Public Meeting
 - Public Comment at Task Force Meetings
- > Gateway Cities COG I-710 Ad Hoc Committee Principles

Agenda Item #1: Defining Equity: Continued Discussion

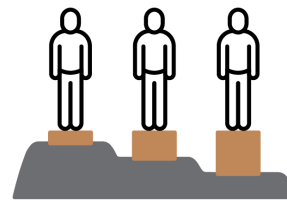
Metro's Definition of Equity

Equity is both an outcome and a process to address disparities to ensure fair and just access to opportunities.

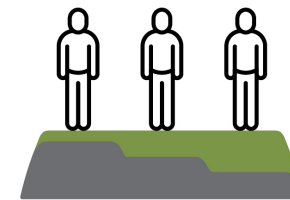
Equality is not the same as equity, and ultimately we're striving for justice.



EQUALITY



EQUITY



JUSTICE

Detailed Definitions of Equity

Procedural Equity

- Proactive and accessible community engagement that bridges linguistic, technology, and ability gaps to meet communities where they are and enable participatory and representative decision-making processes.
- Ongoing systems of accountability and communication to build and maintain trust

Distributive Equity

- Allocation of benefits and amenities proportionate to levels of need and historic investment and based on self-identified community priorities rather than 'one-size-fits-all' solutions
- Policies and resource management to ensure benefits reach intended recipients

Restorative Equity

- Acknowledgement of, and atonement for historic and ongoing systemic harms resulting from planning practice and policy
- Commensurate actions, resources, and investments dedicated to remediation and prevention of further systemic harms

Structural Equity

- Evolution of decision-making bodies to reflect the communities they serve
- Restructuring of organizational systems and hierarchies to empower historically marginalized groups

Justice

“We strive for **justice** to achieve communities where underlying barriers are removed, all people enjoy access to opportunities, and disparities do not exist”

-Metro Equity Platform

Agenda Item #2: Vision, Goals & Objectives Approach

Vision, Goals & Objectives Approach

Vision

A concise statement that captures the collective aspirations, desires, and outcomes of the project

Vision:

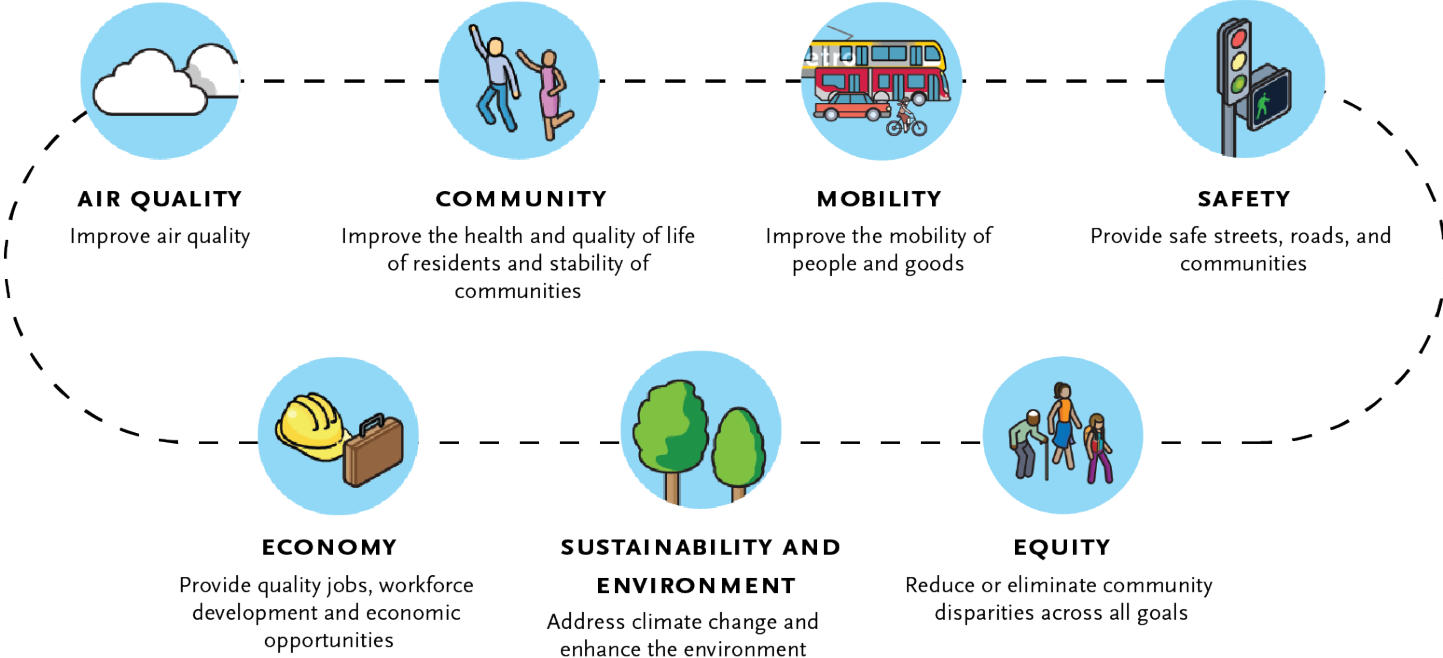
DRAFT Vision Statement:

An equitable multimodal shared-use transportation system that supports clean air, healthy and sustainable communities, economic resilience and quality jobs; and provides safe, quality mobility options for all residents and users of the I-710 South Corridor.

Vision, Goals & Objectives Approach

Goals

Desired outcomes for general areas of concern to support the overall Vision



Vision, Goals & Objectives Approach

Objectives

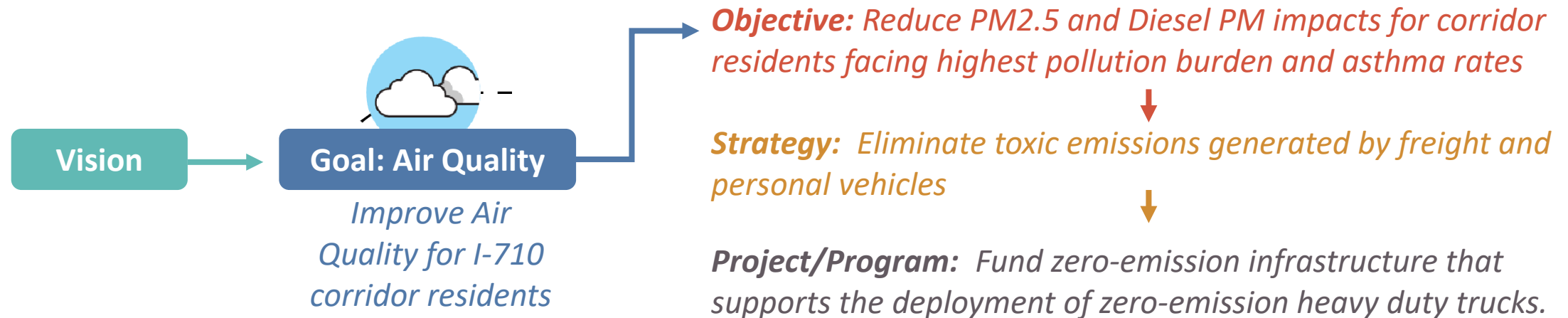
Specific and measurable outcomes for each Goal

Strategies

The “How” – Strategies for attaining each Objective and desired outcome

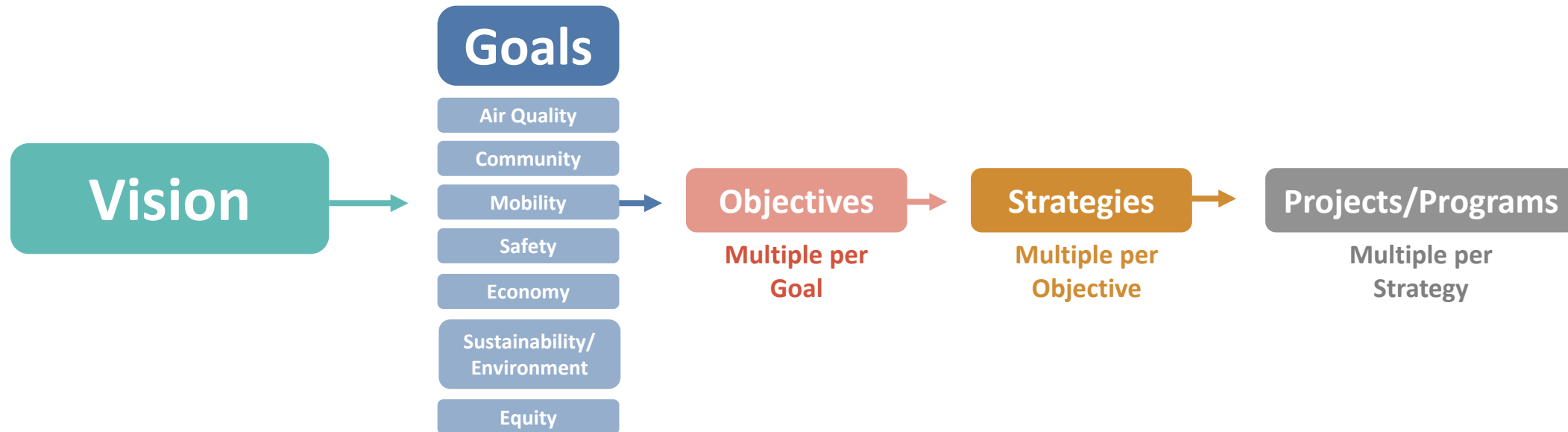
Projects/Programs

The “What” – Specific actions that help realize each Strategy



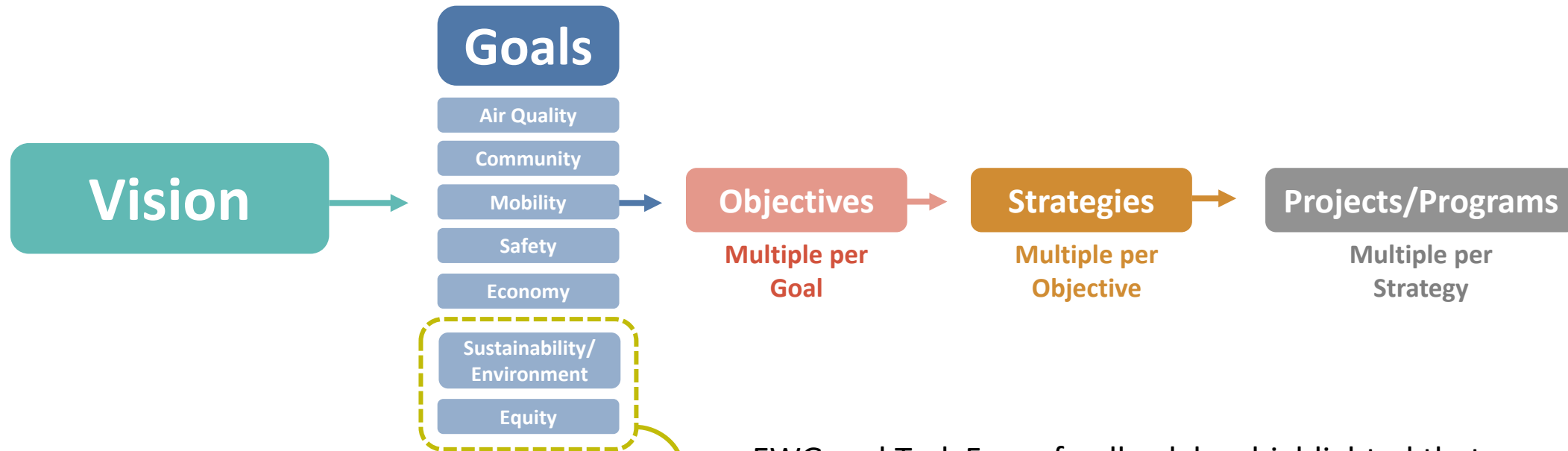
Vision, Goals & Objectives Approach

Task Force #7 Proposed Approach



Vision, Goals & Objectives Approach

Task Force #7 Proposed Approach



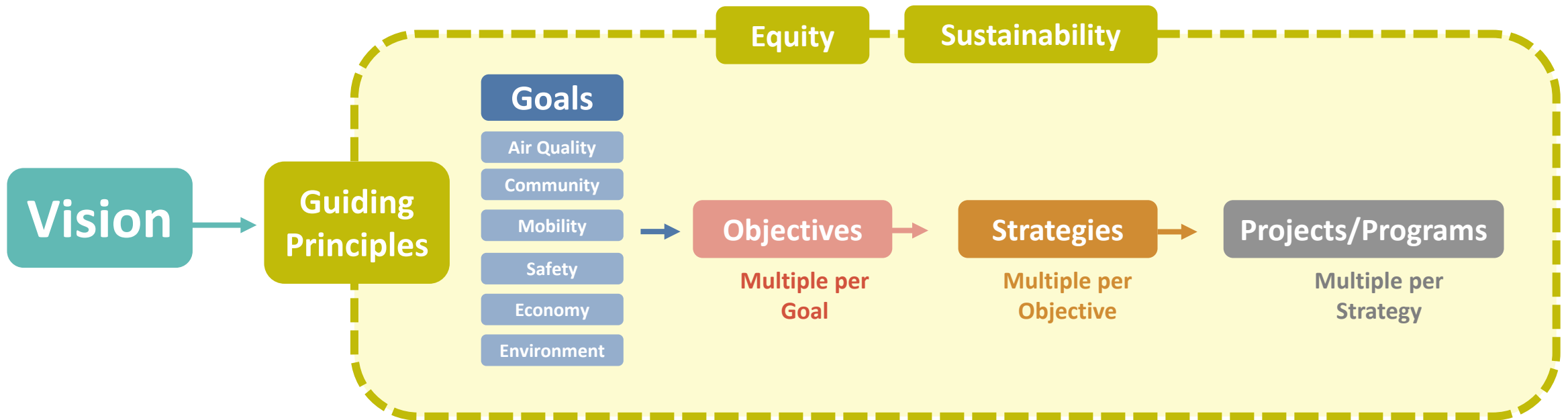
EWG and Task Force feedback has highlighted that Equity and Sustainability are broad and multilayered categories that apply across all goals and objectives

Introducing Guiding Principles

Guiding Principle

A value that guides all processes and outcomes through a cohesive and intentional framework

Proposed Updated Approach



Discussion on Changing Equity from a Goal to a Guiding Principle

Why Introduce Equity as a Guiding Principle?

Equity applies to all aspects of the 710 South Corridor Investment Plan and Task Force.

Helps to further define Equity to achieve common understanding

- > Opportunity to clarify multilayered components of Equity and Justice, and how they tie into the planning process: **Procedural + Distributive + Restorative + Structural Equity**

A guiding principle would:

- > Inform processes and initiatives at every stage of the project
- > Help to focus discussions and identify priorities
- > Tie independent components of project work into a cohesive and intentional framework
- > Reduce redundancies within objectives and strategies

Consensus to Discuss Equity Guiding Principle

- > **Poll: Do members of Equity Working Group agree that Equity better serves the project as a Guiding Principle?**

DEGREES OF AGREEMENT

- I support the proposal
- I can live with the proposal
- I have concerns about the proposal
- I will stand aside on this one

Discussion of Equity Guiding Principle Language

Draft Guiding Principle Statement for Discussion

The I-710 South Corridor Investment Plan is founded on the Guiding Principle of Equity – a commitment to: (1) strive to rectify ~~ing~~ past harms; (2) provide fair ~~ensuring fair and just~~ access to opportunities; , and ~~striving to~~ (3) ~~aim to~~ eliminate disparities in project processes, outcomes, and community results.

The plan seeks to elevate and engrain the principle of Equity across all goals, objectives, strategies, and actions through a framework of Procedural, Distributive, Structural, and Restorative Equity, and by prioritizing an accessible and representative participation process for communities most impacted by the I-710.

Procedural Equity

- Proactive and accessible community engagement that bridges linguistic, technology, and ability gaps to meet communities where they are and enable participatory and representative decision-making processes.
- Ongoing systems of accountability and communication to build and maintain trust

Distributive Equity

- Allocation of benefits and amenities proportionate to levels of need and historic investment and based on self-identified community priorities rather than 'one-size-fits-all' solutions
- Policies and resource management to ensure benefits reach intended recipients

Restorative Equity

- Acknowledgement of, and atonement for historic and ongoing systemic harms resulting from planning practice and policy
- Commensurate actions, resources, and investments dedicated to remediation and prevention of further systemic harms

Structural Equity

- Evolution of decision-making bodies to reflect the communities they serve
- Restructuring of organizational systems and hierarchies to empower historically marginalized groups

Discuss Equity Guiding Principle Language

Miro Board Discussion

Consensus on Equity Guiding Principle Language

- > Poll: Do members of Equity Working Group support the proposed language for the Equity Guiding Principle?

DEGREES OF AGREEMENT

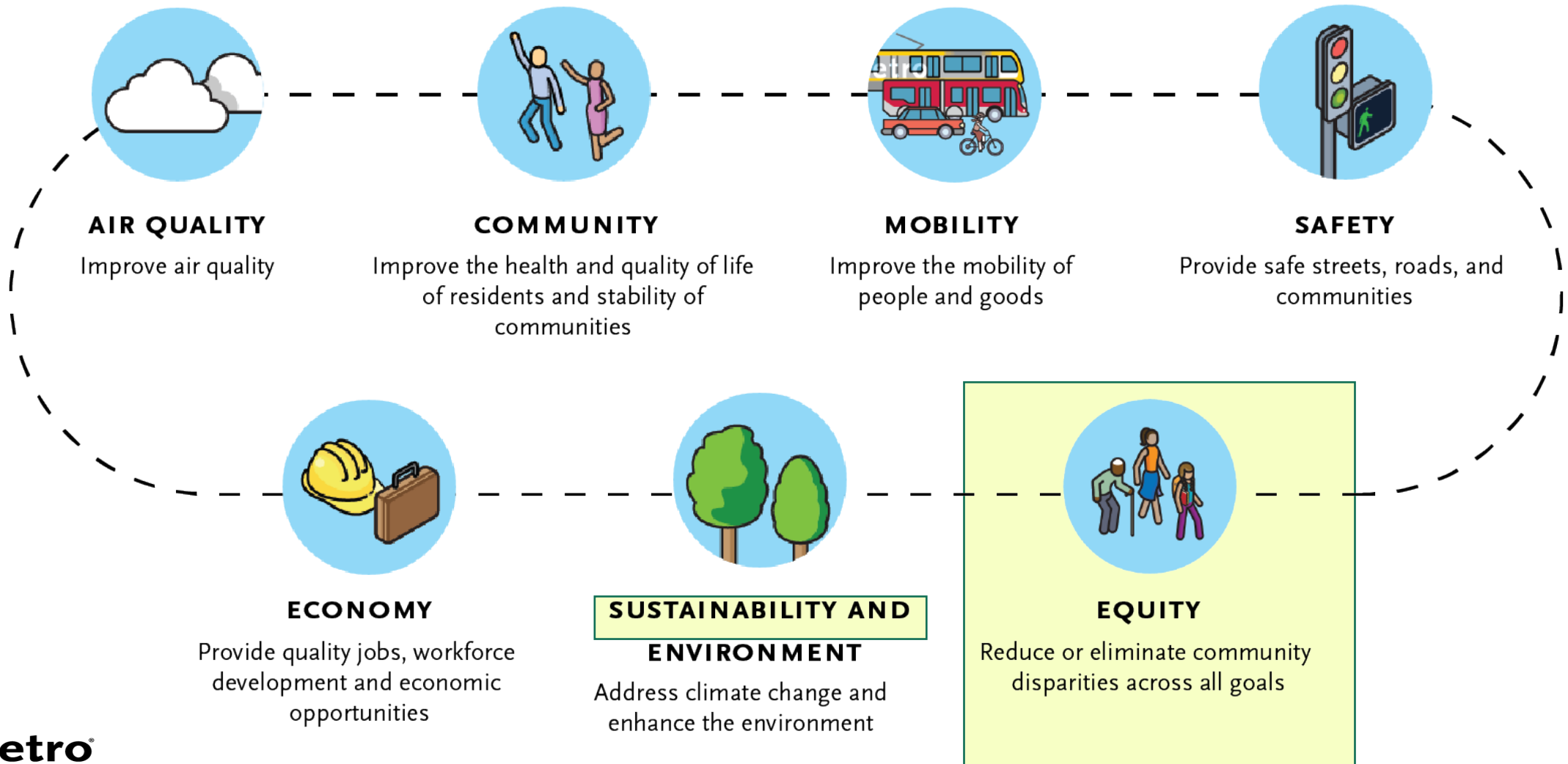
- I support the proposal
- I can live with the proposal
- I have concerns about the proposal
- I will stand aside on this one

Agenda Item #3: Preliminary Vision Statement and Goals Discussion

Draft Vision Statement

An equitable ~~multi-modal~~ shared-use transportation system that ~~fosters~~ promotes clean air, healthy and sustainable communities, economic resilience, and quality jobs; and provides safe, quality multi-modal mobility options for all residents and users of the I-710 South Corridor.

710 South Corridor Preliminary Goals



Agenda Item #4:
**Consensus Building/Formal Recommendations to
Task Force**

Test for Consensus / Prueba de consenso



I SUPPORT
the proposal



I CAN LIVE WITH
the proposal



I HAVE CONCERNS
about the proposal



I WILL STAND ASIDE
on this one



APOYO
la propuesta



PUEDO VIVIR CON
la propuesta



TENGO DUDAS
la propuesta



ME MANTENDRÉ
AL MARGEN
en este caso

VOTE

Closing, Next Steps, and Thank You

Stay connected to this project



Michael Cano, *Executive Officer (Interim)*
Countywide Planning & Development
Metro

One Gateway Plaza, MS 99-13-1
Los Angeles, CA 90012



213.922.4710



710corridor@metro.net



metro.net/projects/i-710-corridor



@metrolosangeles



losangelesmetro

Thank you for joining us!

Reference slides: Defining Vision, Principles, Goals, Objective and Strategies

Vision Statement

What is a Vision?

A Vision is a short statement that:

- > captures the collective outcomes the Task Force seeks to achieve.
- > describes the best future for the I-710 South Corridor.
- > embodies the aspirations and desires of the corridor communities and those who use the corridor.

Why is the vision statement important for the 710 Task Force?

The 710 Task Force will develop and approve a Vision Statement and Goals that will serve as the foundation for the recommended multimodal strategies, projects and programs included within the I-710 South Corridor Investment Plan the Task Force will present to the Metro Board for consideration.

Example

- > *Metro's Vision 2028 is "to deliver a mobility system that enables people to travel swiftly and easily throughout the LA County region, no matter where they want to go or when."*

Guiding Principle: Equity

What is a Guiding Principle:

A Guiding Principle:

- > Informs processes and initiatives at every stage of the project
- > Helps to focus discussions and identify priorities
- > Ties independent components of project work into a cohesive and intentional framework

Example (Metro's Goods Movement Strategic Plan)

*“**Equity and Sustainability:** The Goods Movement Strategic Plan is founded on the values of equity and sustainability. The strategies and initiatives developed through the plan seek to elevate and engrain these values into its priorities and strategic initiatives.”*

Note: An expanded Guiding Principle/Value statement can include additional meaning, context, and framing for how the principle/value applies to various elements of the project.

Goals

What are Goals?

- > A general expression of community values and direction
- > An expression of the desired end result or an outcome (not actions or strategies).
- > A consideration of the “big picture.”
- > A general direction-setter (usually not quantifiable or time-dependent).

Why are Goals important for the 710 Task Force?

The Task Force will develop multiple goals for the I-710 South Corridor to guide future phases of the Task Force Work Plan to develop the Investment Plan.

Examples

| Goals | Objectives |
|-------------------------------|---|
| Mobility and Connectivity | Increase multimodal mobility and improve traffic flow |
| Accessibility and Equity | Improve transportation for disadvantaged populations |
| Safety | Reduce rates of fatalities, and serious injuries |
| Sustainability/ Public Health | Reduce pollution, GHG emissions, and other negative impacts |
| Economy | Achieve economic and fiscal sustainability and job growth |

Goals vs. Objectives vs. Strategies vs. Projects/Programs

Goals vs. Objectives vs. Strategies vs. Projects/Programs

- > Goals are the broad "desired outcomes"
- > Objectives are "more specific outcomes" for a goal. There are typically multiple objectives for each goal.
- > Strategies are the "how" to attain the more specific outcome. Multiple strategies can help achieve the same objective.
- > Projects/programs are the "what." Multiple projects and programs can help realize the same strategy.

Example:

"Improve public health for corridor residents by eliminating toxic emissions generated by freight and personal vehicles by funding zero-emission infrastructure that supports the deployment of zero-emission heavy duty trucks."

- > **Goal:** *"Improve public health for corridor residents"*
- > **Objective:** *"Improve the air quality for corridor residents"*
- > **Strategy:** *"Eliminate toxic emissions generated by freight and personal vehicles"*
- > **Project/Program:** *"Fund zero-emission infrastructure that supports the deployment of zero-emission heavy duty trucks."*

Goal vs. Objectives vs. Strategies Example

> Goal: **Improve the Mobility of People and Goods**

> Objectives:

- Increase multimodal transportation options
- Implement Innovative solutions
- Prioritize bicycle use and public transportation
- Increase shared mobility opportunities
- Implement infrastructure for easy, accessible, equitable access
- Increase the importance of residential streets + arterial highway network and local roads

> Strategies:

- Increase use of Alameda Corridor
- Develop wide sidewalks across the 710 freeway
- Work alongside railroad to reduce emissions from locomotives, cleaner tier
- Expand bus rapid transit
- Implement strategies for reducing vehicle miles traveled, work with government and employers to encourage fewer trips, more telecommuting, flexible hours.