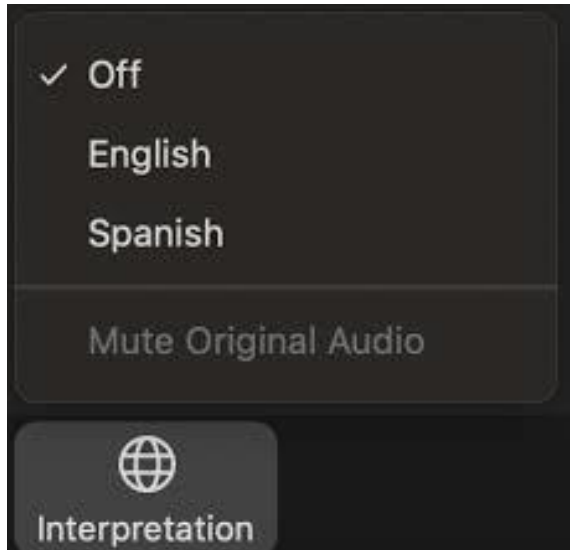




We're developing a new vision for the  
Long Beach-East Los Angeles Corridor Mobility Investment Plan

# Interpretation / Interpretación



- > This meeting is transmitted in both English and Spanish. Everyone must choose a language.
  - > Click the **Interpretation** icon in your meeting controls to enter an *English or Spanish* room
  - > To hear the interpreted language only, click **Mute Original Audio** (Optional)
- > *Esta reunión se transmite tanto en inglés como en español. Todos deben elegir un idioma.*
  - > *Haga clic en el icono de Interpretación en los controles de su reunión para ingresar a una sala en inglés o español*
  - > *Para escuchar solo el idioma interpretado, haga clic en “**Mute Original Audio**” o “**Silenciar audio original**” (Opcional)*

# Zoom Protocols / *Protocolos de Zoom*

- > Click **Raise Hand** in your meeting controls or
  - > **Press\*9** on the phone line.
  - > To lower your hand, click **Raise Hand** in your meeting controls.
  - > Comments & questions can also be provided in writing by using the **Q&A** function.
  - > The **Q&A** button is located on the control panel at the bottom of your screen.
  - > Tech Support - Phone: 323.609.3345  
Monitoring, translation support
- > *Haga clic en “**Raise Hand**” o “**Levantarse la mano**” en los controles de la reunión o*
  - > ***Presiona \*9** en la línea telefónica.*
  - > *Para bajar la mano, haga clic en “**Raise Hand**” o “**Levantarse la mano**” en los controles de la reunión.*
  - > *Los comentarios y las preguntas también se pueden proporcionar por escrito mediante la función de **Q&A**.*
  - > *El botón **Q&A** se encuentra en el panel de control en la parte inferior de la pantalla.*
  - > *Asistencia Tecnológica por teléfono al 323.609.3345*


# Member Identification / Identificación de miembros

**CLC and Task Force Members, please change your Zoom screen name to include:** Name, CLC/Task Force, Jurisdiction

**Miembros del Comité de Liderazgo Comunitario (CLC) y del Comité Consultivo, por favor cambie su nombre de pantalla de Zoom para incluir:** Su nombre, CLC/Comité Consultivo


**1**

After launching the Zoom meeting, click on the "Participants" icon at the bottom of the window.




**2**

In the "Participants" list on the right side of the Zoom window, hover over your name and click on the "Rename" button.



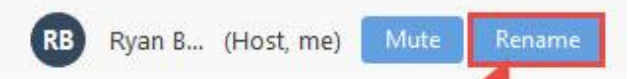
**1**

Después de iniciar la reunión de Zoom, haga clic en el icono de participantes en la parte inferior de la ventana



**2**

En la lista de participantes en el lado derecho de la ventana de zoom, coloque el cursor sobre su nombre y haga clic en el botón "Rename" y cámbiele el nombre



# Welcome!

**Equity Working Group Meeting #16**

March 25, 2024

5-7pm



**Metro**

# Metro and Consultant Team



**KeAndra Cylear Dodds**

LA Metro, Equity and Race



**Jessica Medina**

LA Metro, Equity and Race



**Ernesto Chaves**

LA Metro, Highway Programs



**Michael Cano**

LA Metro, Countywide Planning



**Lilian De Loza-Gutierrez**

LA Metro, Community Relations



**Susan  
Ambrosini**



**Aryeh  
Cohen**

AECOM, Equity Team

# Meeting Objectives

- > Learn about existing programs, challenges, and opportunities around Health and Air Quality
  - **Why focus on these topics today?** Health and Air Quality have been continually raised as a key concern and area of focus for this group
- > Begin to define the objectives and structure for a new Working Group to develop these four Community Programs
- > Discuss next steps for Community Program Working Groups after adoption of the Investment Plan
- > Help identify refinements to Investment Plan that demonstrate commitment to successful, accountable programs for community stakeholders

# Agenda

- 5:00 pm Welcome, Agenda, and Meeting Objectives (10 minutes)**
- 5:10 pm Agenda Item #1: Community Programs Working Groups Overview (10 minutes)**
- 5:20 pm Agenda Item #2: Community Health Benefits Program - Closer Look (20 minutes)**
- 5:40 pm Agenda Item #3: Round Robin – Related Work, Challenges, Opportunities (45 minutes)**
- 6:25 pm Agenda Item #4: Working Groups Framework Discussion (30 minutes)**
- 6:55 pm Closing Comments and Thank You (5 minutes)**

# Equity Working Group Meeting #15 Highlights/Recap

## Summary

- > Held virtually via Zoom on Thursday, February 8, 2023
- > 13 participants (7 Task Force Members, 6 CLC members)

## Highlights

- > Discussion of how community input on projects and programs is reflected in the Draft Corridor Mobility Investment Plan, and how we are addressing gaps
- > Discussion and collection of EWG input on strategies and actions for development of Community Programs and establishment of topic area working groups

**Agenda Item #1:**  
**Community Programs Working Groups Overview**

# Community Program Working Groups by Topic Area – Proposed in Draft Investment Plan

Working Group Topic Area	Programs
Air Quality/ Community Health	Bus Electrification Projects
	LB-ELA Corridor Community Health Benefit Program
	Zero-Emission Infrastructure for Autos
	Air Quality Monitoring Stations
Environment	LB-ELA Corridor Energy Reduction/Greenhouse Gas (GHG) Emissions Reduction Program
	LB-ELA Corridor “Urban Greening” Initiative
	Public Art/Aesthetics
Housing Stabilization/ Land Use	Southeast Gateway Transit-Oriented Development Strategic Implementation Plan and Program (TOD SIP)
	Transit-Oriented Communities/Land Use
	Homeless Programs
	Housing Stabilization Policies
Job Creation/ Work Opportunities	Vocational Educational Programs
	Targeted Hire Programs
	Employment/Recruitment Initiatives
	Economic Stabilization Policies

# Community Program Working Groups by Topic Area – Consolidation Proposed by Task Force

Working Group Topic Area	Programs
Health/Air Quality/Environment	Bus Electrification Projects
	LB-ELA Corridor Community Health Benefit Program
	Zero-Emission Infrastructure for Autos
	Air Quality Monitoring Stations
	LB-ELA Corridor Energy Reduction/(GHG) Emissions Reduction Program
	LB-ELA Corridor “Urban Greening” Initiative
	Public Art/Aesthetics
Housing Stabilization/ Land Use	Southeast Gateway Transit-Oriented Development Strategic Implementation Plan and Program (TOD SIP)
	Transit-Oriented Communities/Land Use
	Homeless Programs
	Housing Stabilization Policies
Job Creation/ Work Opportunities	Vocational Educational Programs
	Targeted Hire Programs
	Employment/Recruitment Initiatives
	Economic Stabilization Policies

**Question:**  
Do you support consolidating these two topic areas into one working group?

# Community Program Working Group Objectives

## What will the Working Groups do?

### All Working Groups will:

- > Develop the workplan and objectives for the Working Group to achieve success in advancing each included Community Program
- > Ensure alignment with LB-ELA CMIP Vision, Goals, and Guiding Principles
- > Help identify stakeholders, participants, and experts to support the work of the group
- > Help identify funding sources and grant opportunities to support the funding needs of the programs
- > Help identify potential projects and programs to develop, include, refine, and/or explore that could be priorities for each Community Program
- > Help develop priorities and strategies for planning and implementation of these various projects and programs
- > Provide support and input for community engagement strategies
- > Hold Metro accountable for the delivery of each Community Program
- > Identify and collect foundational data and information to inform needs and program priorities

**Agenda Item #2:**  
**Community Health Benefit Program – Closer Look**

# Community Health Benefit Program Background

## Gateway Cities Air Quality Action Plan (GCCOG/Metro)

### 2005-2013 Air Quality Action Plan Study

- > Emissions Assessment
- > Air Quality Assessment
- > Health Risk Assessment
- > Toolkit of Measures to Improve Air Quality
  - Actions applicable to GCCOG members, other public agencies, community groups, and businesses
  - Includes 7 goals and 18 measures with potential reduce PM2.5, DPM, NOx, and Arsenic Emissions

# Community Health Benefit Program Background

Gateway Cities Air Quality Action Plan (GCCOG/Metro)

Community Alternative 7 - Residential and School Air Pollution Mitigation (CEHAJ)

## 2012 Proposal (Comments on I-710 South Corridor EIR/EIS)

- > Funding of Air Pollution Mitigation Program
- > Acceleration of Air Pollution Mitigation Programs
- > Acceleration of Air Pollution Mitigation of Schools
- > Near Freeway Air Filtration

# Community Health Benefit Program Background

Gateway Cities Air Quality Action Plan (GCCOG/Metro)

Community Alternative 7 - Residential and School Air Pollution Mitigation (CEHAJ)

Alternative 5C Early Action - Community Health Benefits Program (Metro)

## 2018 Metro Staff Recommendation of Alternative 5C

- Grant program structured to provide corridor communities the opportunity to implement projects or outreach activities that would improve air quality and public health related to I-710 travel and goods movement.
  - > Air quality improvement and/or noise reduction measures at local schools and other sensitive receptors or related sites
  - > Air quality improvements at hospitals, medical centers, and senior facilities, as well as health education, outreach, and screening
  - > Greenhouse gas (GHG) reduction through projects such as renewable power, energy efficiency, and tree-planting, etc.

# What's in the Draft Investment Plan Today?

## LB-ELA Corridor Community Health Benefit Program (CHBP)

### Program description

Under this program, funding would be made available to implement air quality projects to reduce exposure to air pollution as well as health education and screening programs in areas adversely affected by existing and proposed transportation infrastructure projects. The LB-ELA Community Health Benefit Program would serve the communities in the LB-ELA Corridor Study Area. This program would provide subsidy funding to implement projects and outreach activities to improve air quality and public health, including but not limited to:

- Air Quality Projects for Schools and Community Facilities: air filtration, HVAC upgrades, replacement/sealing of windows and doors, vegetation barriers or buffer landscaping.
- Health Education and Screening: community health screening and diagnosis, health education, training for community health workers, outreach programs.

### Detailed pathway suggestion

Metro can partner with CBOs involved in environmental justice and public health to identify and develop a suite of new air quality improvement (exposure reduction) projects throughout the LB-ELA Corridor. Projects may support implementation of strategies and actions identified in the CERP for AB 617 Community Air Protection Program Communities. Metro can provide funding and/or technical assistance for targeted expansion of existing health education and screening programs. This program may also support and expand upon the I-710 Particulate Matter (PM) Reduction Pilot Project [LB-ELA\_0157] recommended for funding as part of the Investment Plan.

### Implementation notes/guidance

COVID-19-related public health education and outreach could be used as a model for educational outreach related to air quality and associated health outcomes.

# CHBP Existing Programs, Potential Partners

## Existing Programs

- > SCAQMD School Air Filtration Project
- > Assembly Bill (AB) 617 Community Air Protection Program – Community Emissions Reduction Programs (CERP) Strategies and Actions
- > CARB Community Air Protection Program (CAPP)

## Related LB-ELA CMIP Recommended Projects and Programs

- > I-710 Particulate Matter (PM) Reduction Pilot Project [LB-ELA\_0157]
- > Bus Electrification Projects
- > Zero-Emission Infrastructure for Autos
- > Air Quality Monitoring Stations
- > LB-ELA Corridor Energy Reduction/(GHG) Emissions Reduction Program
- > LB-ELA Corridor “Urban Greening” Initiative

## Potential Partners

- > Long Beach Alliance for Children with Asthma (LBACA)
- > East Yard Communities for Environmental Justice (EYCEJ)
- > Earthjustice
- > Communities for a Better Environment (CBE)
- > SELA Collaborative
- > Natural Resources Defense Council
- > Coalition for Clean Air (CCA)
- > LA County Department of Public Health
- > Gateway Cities Council of Governments (GCCOG)
- > South Coast Air Quality Management District (SCAQMD)
- > Southern California Clinics Association
- > Southern California (SoCal) Crossroads
- > SmartAirLA

# CHBP Other Potential Funding Sources

Grant Program	Description
<b>LA Care Community Health Investment Fund</b>	Funding will support projects that strengthen community health and fill gaps in health coverage for low-income individuals in Los Angeles County.
<b>CDC Racial and Ethnic Approaches to Community Health (REACH)</b>	Through REACH, recipients plan and carry out local, culturally appropriate programs to address a wide range of health issues among Black or African American, Hispanic or Latino, Asian, American Indian, Native Hawaiian, Pacific Islander, and Alaska Native persons.
<b>Community Air Protection Incentives</b>	Incentives directed by local air districts to put advanced technologies to work for cleaner air in the California communities that are most heavily impacted by disproportionate levels of air pollution.
<b>Clean Mobility Investments and the Sustainable Transportation Equity Project (STEP)</b>	Funds projects, such as active transportation infrastructure, public transit, bikeshare, microtransit, school transportation, workforce training, and education and outreach campaigns, that will work together to increase transportation equity and support a zero-emission transportation.
<b>E-Bike Incentive Project</b>	Program is intended to encourage adoption of electric bicycles by low-income individuals as a replacement for motor vehicle trips
<b>AB 617 Community Air Grants</b>	Funds projects that foster workforce development, prioritize equitable public participation, and demonstrate local partnership building and coordination, leveraging, in-kind support, or other forms of collaboration and advance environmental justice within the context of California's air quality policies (educational, technical-air monitoring, targeted-emissions reduction strategy expansion projects, etc.)
<b>CA Enviro Grassroots Funds</b>	Supports small and emerging local groups across California that are building climate resilience and advancing environmental justice. (pooled re-granting fund), (small grants for small orgs. that are underserved)
<b>Outdoor Recreation Legacy Partnership (ORLP) Program</b>	Funds can be used for the acquisition and/or development of, or to substantially renovate obsolete, public parks and other outdoor recreation spaces.
<b>Sustainable Communities Competitive</b>	Transportation planning activities such as planning for active transportation, safe routes to schools, transit services, vision zero, complete streets, freight corridors, social equity, integrated land use and transportation planning
<b>Environmental Justice Action Grants</b>	Grants to support tribes, community-based organizations, and residents to engage in emergency preparedness, public health protection, environmental and climate decision-making, and coordinated enforcement efforts affecting their communities
<b>Youth Community Access Program</b>	Funding will support public, educational, job training and outreach programs, as well as small capital projects and clean vehicle purchases that expand youth access to cultural or natural resources
<b>Community Resilience Centers Program</b>	Funds planning, development, construction, and upgrades of local facilities to serve as Community Resilience Centers, providing shelter and resources during climate and other emergencies.

# Related Programs - Examples

## Long Beach Alliance for Children with Asthma (LBACA) Programs

### Fight Asthma LB-LA Harbor Tool

- Data on asthma danger levels, asthma danger areas, pollution sources, hospitalizations, school absenteeism

### Community Health Worker Asthma Home Visitation Program

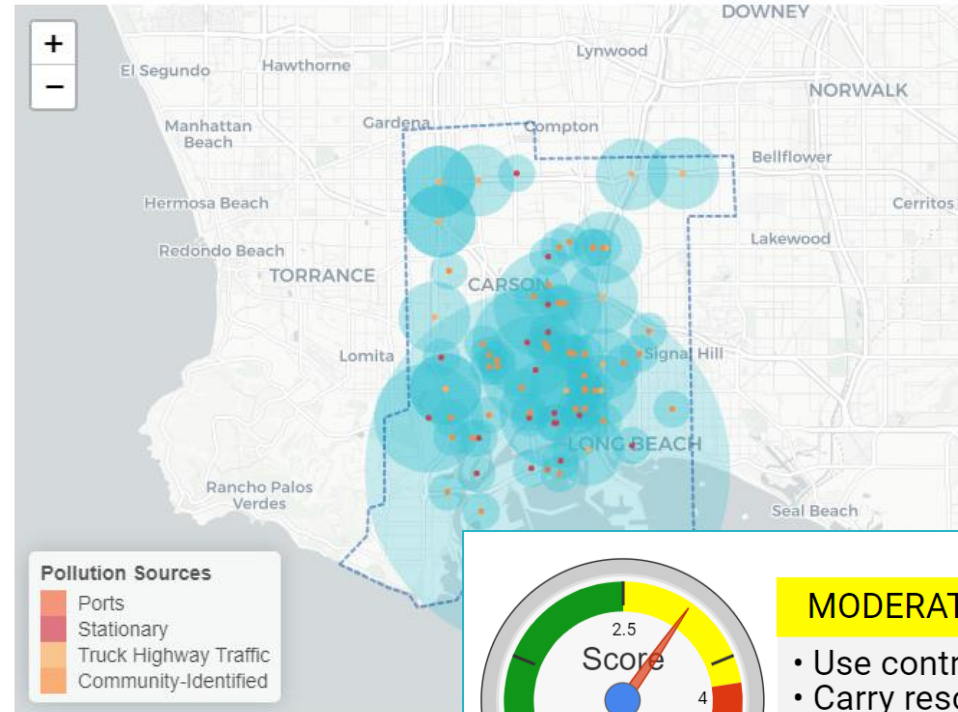
- Home visits, education and awareness, environmental assessments and free supplies to minimize asthma triggers, connection to services

### School, Clinic, Community Education and Training

- Training and information for school personnel, physicians and medical assistants, and community members to improve asthma management and long-term outcomes

## Pollution Sources

Find the largest pollution sources in LB-LA Harbor by clicking the points on the map.



# Related Programs - Examples

## Los Angeles County Department of Public Health (LACDPH) Programs

### Reducing Exposures to Hexavalent Chromium Emissions

- Working with SCAQMD and other orgs on strategies to reduce exposures to chromium 6 in LA County
- Areas of priority in City of Paramount and unincorporated West Rancho Dominguez

### Community Health Worker Engagement - Exide Technologies

- Free blood lead testing for communities with exposure to high levels of lead and arsenic from Exide's former battery recycling facility in Vernon

### City and Community Level Health Profiles

- Provides local level data on several categories of health outcomes to cities and unincorporated communities within Los Angeles County.



Sampling for chromium 6 at a Paramount school

**Do you live or work near Exide Technologies?**  
Vernon  
Commerce  
Maywood  
East Los Angeles  
Huntington Park  
Bell  
Parts of Boyle Heights

**GET A FREE BLOOD LEAD TEST**

# Motion: LA County Board of Supervisors

Motion: Supervisors Hahn and Solis (**Passed** March 19, 2024)

Long Beach - East Los Angeles Corridor Mobility Investment Plan Community Programs

*...Metro has organized a new process involving stakeholders and community input. The plan includes 15 Community Programs aimed at various aspects like health benefits, environmental improvements, transit-oriented development, and homelessness initiatives. While Metro plans to advance these programs, it seeks guidance and collaboration from outside agencies, jurisdictions, and community-based organizations.*

## **The Board of Supervisors Motion:**

- > Adopts the LB-ELA CMIP Community Programs as a priority for Los Angeles County for Los Angeles County to support in their development and implementation.
- > Directs the Chief Executive Officer to designate a County Department liaison for each of the 15 Community Programs to provide technical assistance, identify resources, support grant applications, and participate in relevant working groups.
- > Directs the Chief Executive Officer to report back in 120 days on progress and implementation of the above items.

**Agenda Item #3:**  
**Round Robin Discussion**  
**Health, Environment, and Air Quality Community**  
**Programs**

# Round Robin 1: Your Connection to Health

**What issues do you associate with “Community Health”?**

**In what ways is your organization currently working on health and air quality issues?**  
If many – which are specifically related to transportation, and/or the LB-ELA Corridor?

**What other programs related to health and air quality are you aware of, or involved in as a participant?**

# Round Robin 2: Challenges

**What are the greatest organizational and programmatic challenges you face related to these program topics?**

**What are the greatest challenges you or your community face in accessing existing program benefits?**

# Round Robin 3: Opportunities

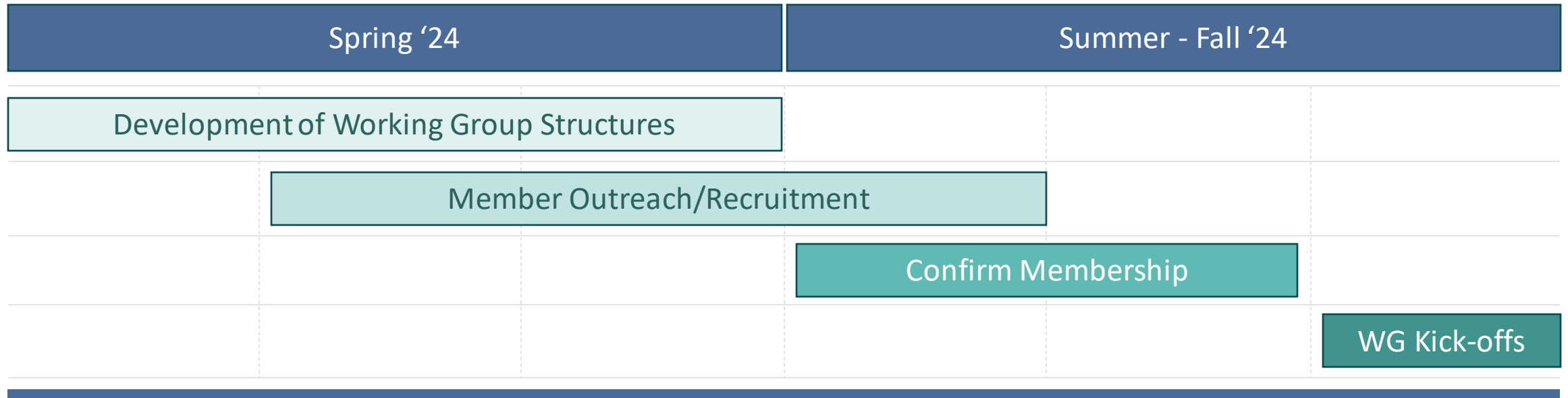
**What opportunities do you see for Metro and other partner agencies to support and build upon your work in this area?**

**What opportunities do you see for Metro and other partner agencies to help expand access to existing program benefits?**

**Agenda Item #4:  
Working Groups Framework Discussion**

# Anticipated Timeline (near-term)

## When will Community Program Working Groups be formed?\*



\*to be finalized after Investment Plan is adopted in April 2024

# Round Robin: Working Group Roles

## What type of Working Group role would you be interested in?

<b>Lead</b>	<ul style="list-style-type: none"><li>• Help coordinate and facilitate working group, help set priorities and agendas</li><li>• Co-design community program details</li><li>• Participate in all meetings and targeted discussions as needed</li></ul>
<b>Collaborate</b>	<ul style="list-style-type: none"><li>• Co-design community program details, contribute to production of materials</li><li>• Participate in general working group meetings and most targeted discussions</li></ul>
<b>Advise</b>	<ul style="list-style-type: none"><li>• Provide technical expertise on relevant programs</li><li>• Participate in general working group meetings and some targeted discussions</li></ul>
<b>Advocate</b>	<ul style="list-style-type: none"><li>• Advocate on behalf of community program efforts (e.g., grant applications)</li><li>• Participate in general working group meetings and some targeted discussions</li></ul>
<b>Review</b>	<ul style="list-style-type: none"><li>• Receive periodic updates, review materials, and provide feedback</li><li>• Participate in general working group meetings only</li></ul>

# Round Robin: Working Group Roles

## Who else should be invited to serve in each of these roles?

<b>Lead</b>	<ul style="list-style-type: none"><li>• Help coordinate and facilitate working group, help set priorities and agendas</li><li>• Co-design community program details</li><li>• Participate in all meetings and targeted discussions as needed</li></ul>
<b>Collaborate</b>	<ul style="list-style-type: none"><li>• Co-design community program details, contribute to production of materials</li><li>• Participate in general working group meetings and most targeted discussions</li></ul>
<b>Advise</b>	<ul style="list-style-type: none"><li>• Provide technical expertise on relevant programs</li><li>• Participate in general working group meetings and some targeted discussions</li></ul>
<b>Advocate</b>	<ul style="list-style-type: none"><li>• Advocate on behalf of community program efforts (e.g., grant applications)</li><li>• Participate in general working group meetings and some targeted discussions</li></ul>
<b>Review</b>	<ul style="list-style-type: none"><li>• Receive periodic updates, review materials, and provide feedback</li><li>• Participate in general working group meetings only</li></ul>

# Discussion Questions

**Would you recommend having working groups with an established membership, or an open participation format?**

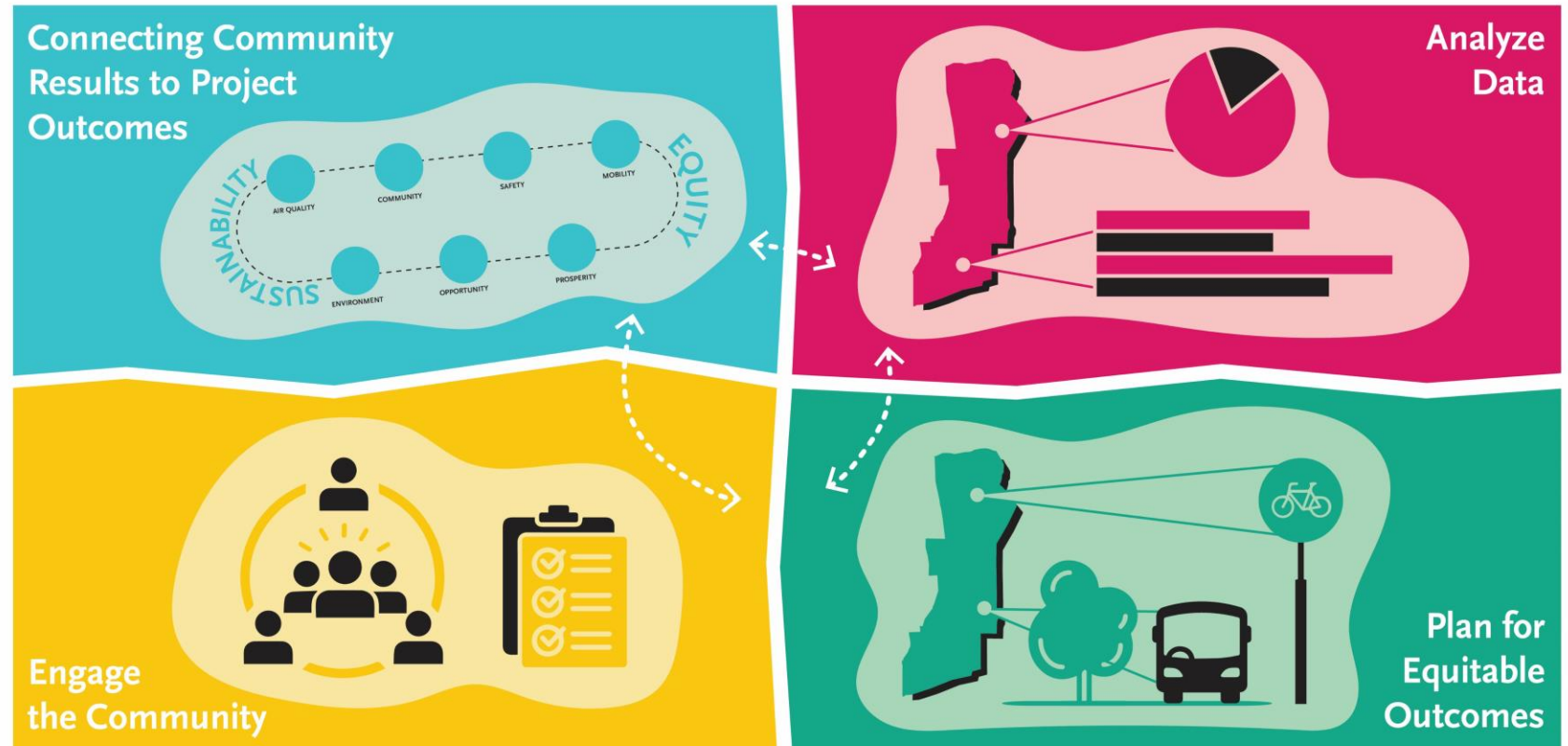
**What additional information would be helpful for you to consider or commit to participating in this working group?**

**Merging Groups?**

# Closing Comments and Thank You

# EPET Update

- EPET Sections 1-2 were included as appendix to Draft Investment Plan
- EPET Sections 3-4 will be shared prior to CLC and Task Force Votes



# Upcoming Schedule – MARK YOUR CALENDARS!

## LB-ELA Meetings

### ***CLC Meeting #26 – Virtual Meeting***

Thursday, April 4, 2024, 5-7pm

### ***Task Force Meeting #31 – Virtual Meeting***

Monday, April 8, 2024, 5-7pm

## Metro Meeting

### **Planning & Programming Meeting**

Wednesday, April 17, 2024, 11:00am

### **Board Meeting**

Thursday, April 25, 2024, 10:00am

## Investment Plan

### ***Public Comment Period Ends***

Monday, April 1, 2024

For the most updated list of meeting dates, please visit:  
<https://www.metro.net/projects/lb-ela-corridor-plan/>

# Stay connected to this project



Michael Cano  
Executive Officer  
Countywide Planning & Development  
LA Metro  
One Gateway Plaza, MS 99-13-1  
Los Angeles, CA 90012



*213.418.3010 W*  
*213.305.0423 C*



[710corridor@metro.net](mailto:710corridor@metro.net)



<https://www.metro.net/projects/lb-ela-corridor-plan/>



*@metrolosangeles*



*losangelesmetro*

**Thank you for joining us!**