

Welcome!

We will begin in a few moments.

Active Transportation Strategic Plan Update
Community Meeting
August 2023



Metro is making it easier to walk, bike, and roll.

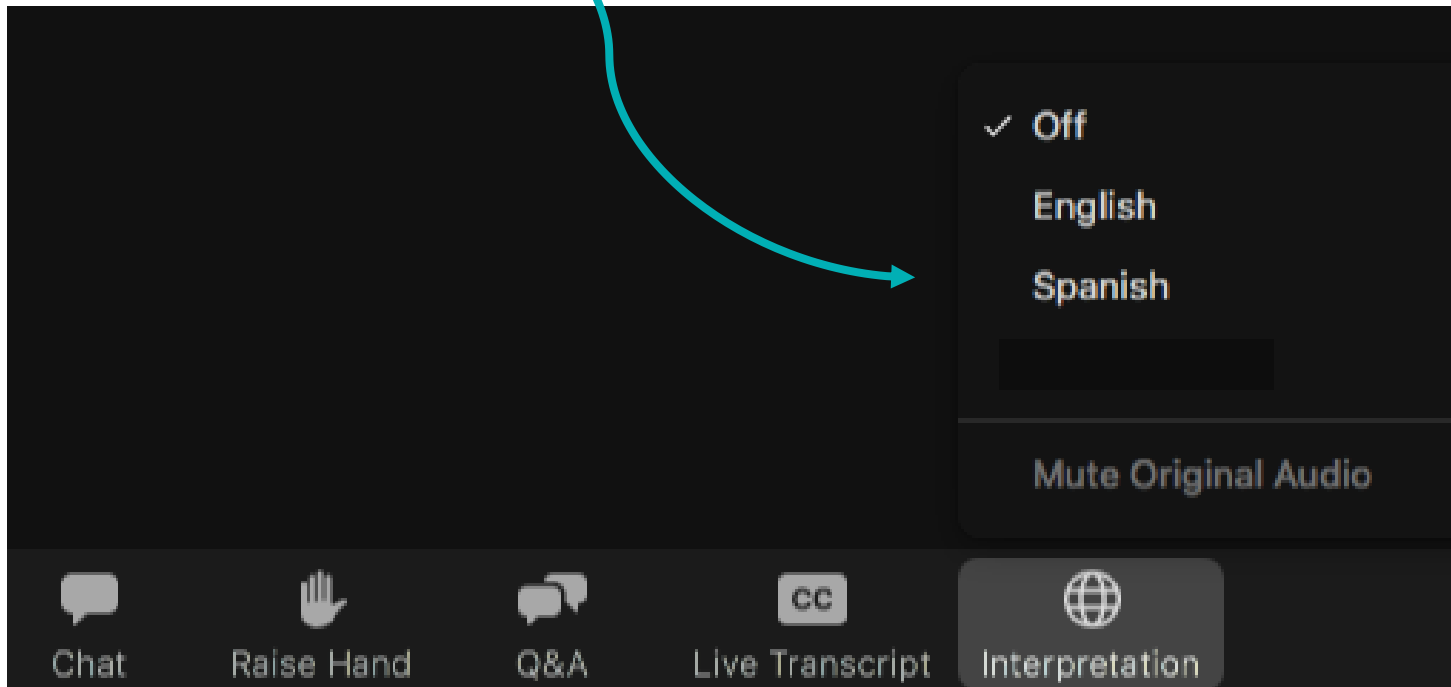


ACTIVE TRANSPORTATION STRATEGIC PLAN UPDATE

Audio and Accessibility / Audio y Accesibilidad

> This presentation will be provided in Spanish and live interpretation is available. Click on the tab as shown in the picture.

> Esta presentación se brindará en español y hay interpretación en vivo disponible. Haga clic en la pestaña como se muestra en la imagen.



Housekeeping

Today's meeting is being recorded.



Attendee cameras are off and microphones are muted.



We will invite your feedback during question and comment period.



During the public comment/Q&A period, use the 'raise hand' icon or submit questions via the 'Q&A' feature.



For technical support, email martin@communicationslab.com or call 949-294-3781



Today's Speakers



Cameron Palm
Project Manager,
LA Metro



Sherry Ryan, PhD
Principal,
CR Associates



Isai Rosa
Community Relations
Manager, LA Metro



Justin Glover
Vice President,
Communications Lab



Community Guidelines

To provide a safe, comfortable, and equitable space during this meeting, we are asking attendees to:

- > Address all questions and comments to today's presenters, not to other attendees
- > Treat fellow community members and presenters with respect

Metro is committed to ensuring that all participants can fairly and clearly ask questions and share ideas, comments, and concerns.



Zoom Poll

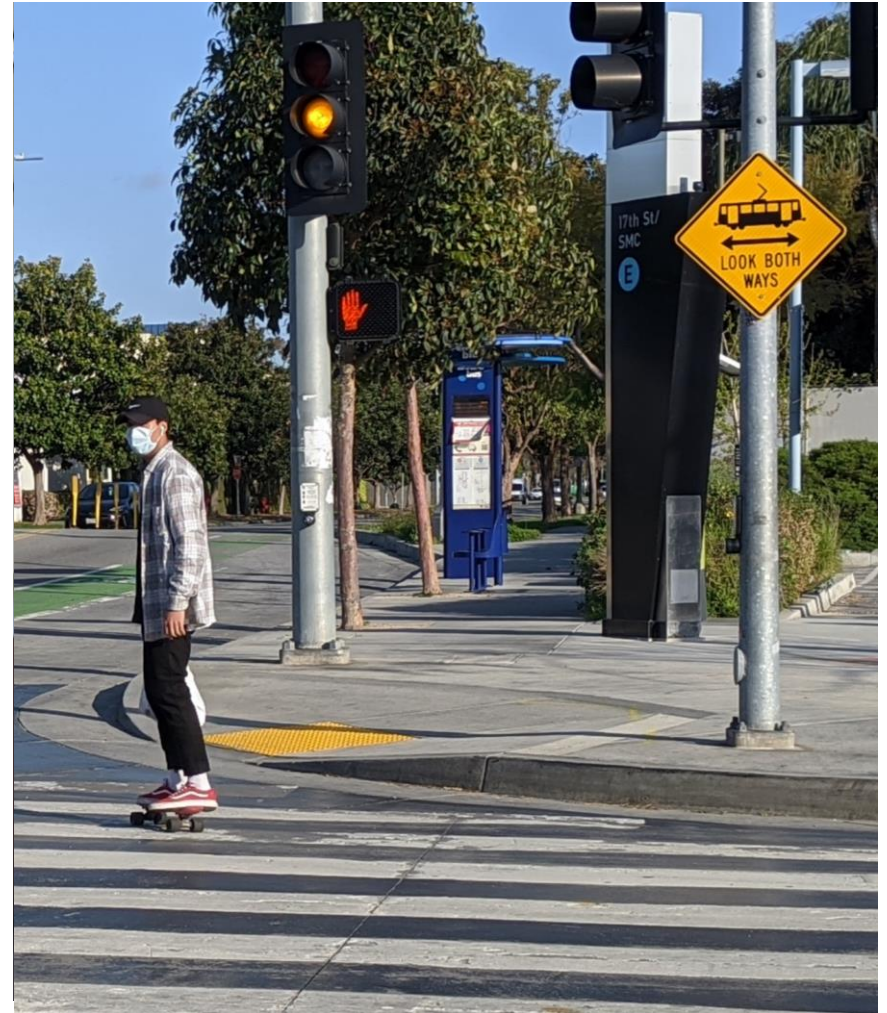


zoom poll



Agenda

- > Project Background
- > Community & Stakeholder Engagement Summary
- > Regional Network
- > ATSP Toolkit
- > Next Steps



Project Background

Metro's Plan for Active Transportation

- > LA Metro first adopted an active transportation plan in 2016
- > Goal of increasing walking, biking and rolling to/from Metro transit service
- > Update builds upon 2016 plan's active transportation network and first/last mile connectivity to transit



Active Transportation Strategic Plan

Volume I
April 2016



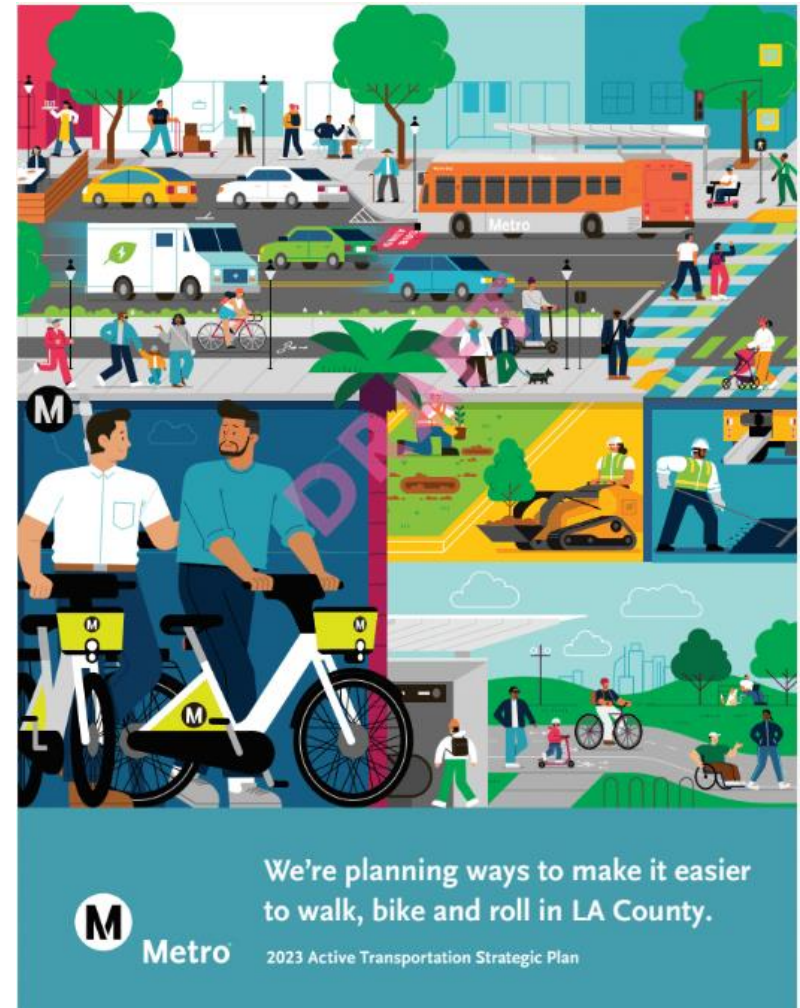
Background and Intent

- > **First update of 2016 plan**
 - Updated goals and objectives
 - Data refresh
 - Introduce Measure M resources
- > **Lays out regional active transportation network**
 - Defines and prioritizes:
 - 602 First/Last Mile Areas
 - 81 Pedestrian Districts (new element)
 - 1,433 mi of Regional Bikeways
- > **Guiding document for implementation**

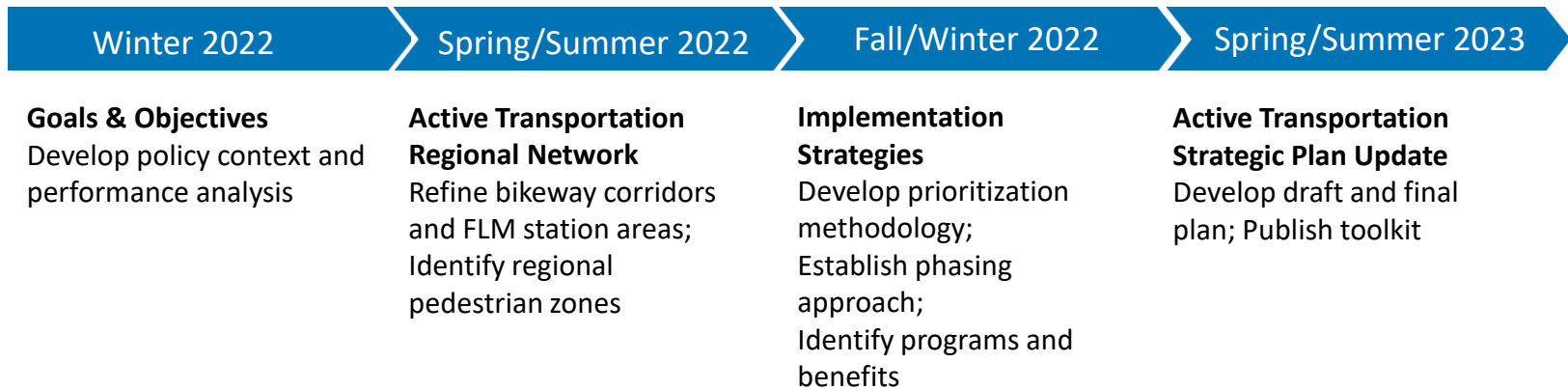


Key Plan Elements

- > Goals and Objectives
- > Regional Active Transportation Network
- > Network Prioritization
- > Cost Estimates and Funding
- > Best Practices & Plan Benefits
- > Implementation Strategies



Project Milestones & Schedule



ONGOING PUBLIC PARTICIPATION



Community & Stakeholder Engagement

Community & Stakeholder Engagement



> Technical Working Group

- 4 general updates
- 6 subregional briefings

> Community Meetings

- 1 countywide community meetings
- 6 subregional community briefings

> 33 In-Person Engagement Events

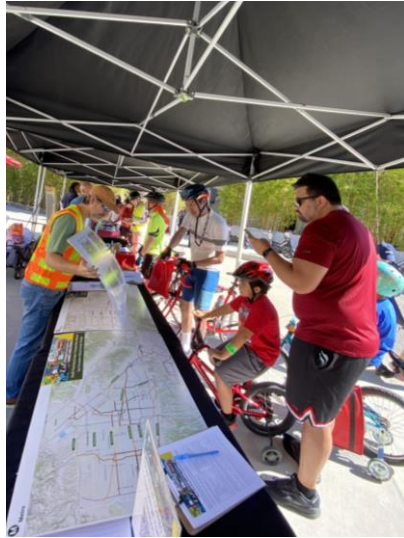
- 300+ comments on network development
- 1,800+ comments on prioritization

> Community Based Organization Partnerships to support engagement

- South Los Angeles
- San Gabriel Valley
- Gateway Cities

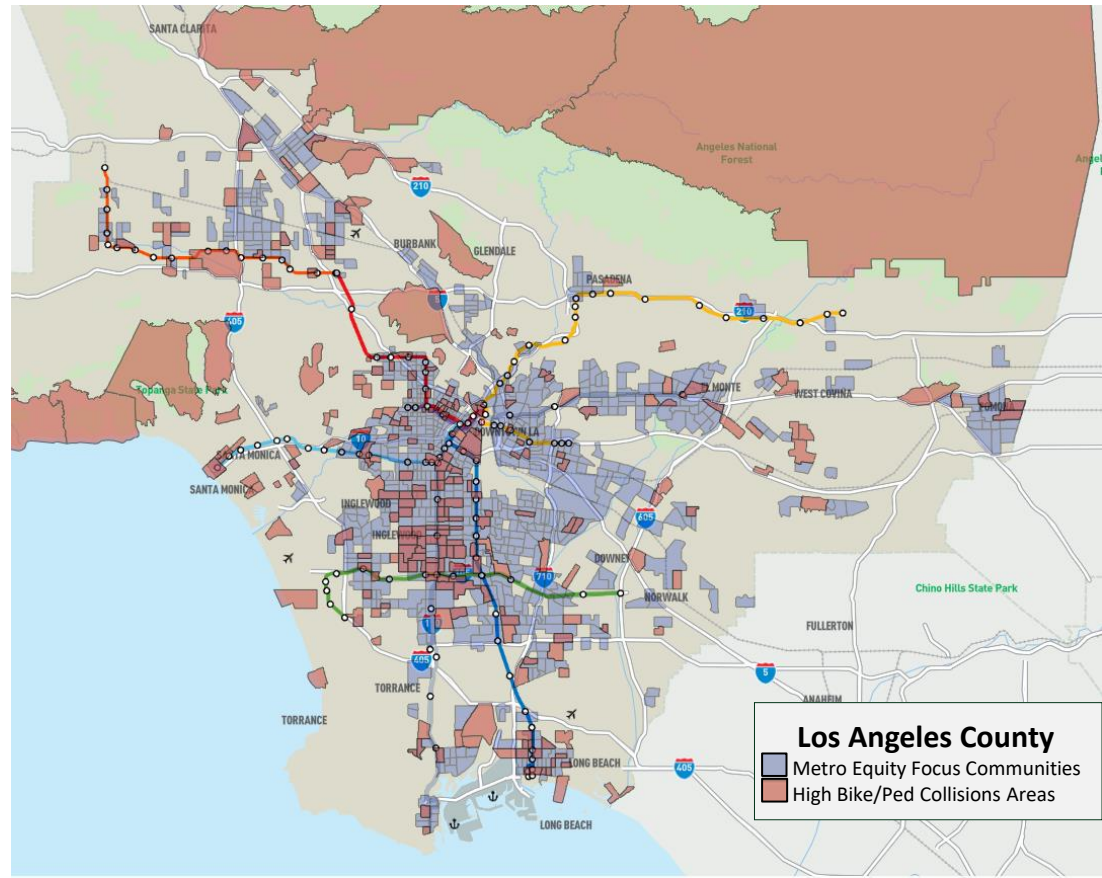


Countywide Community Engagement



> 33 In-Person Engagement Events

- 300+ comments on network development
- 1,800+ comments on prioritization
- Reaching Equity Focus Communities



CBO Partnerships

ACTIVESGV



CBO Partnerships

HAS



Key Themes from Community Comments

The first round of engagement focused on gathering community feedback to develop a network prioritization criteria to prioritize bike routes throughout the county.

Network Prioritization Criteria

Community members surveyed identified the following as high priority or very-high priority

1. Safety 91%
2. Connectivity 87%
3. Equity 80%
4. Sustainability 78%
5. Community Support 77%
6. Feasibility 75%

The second round of engagement focused on gathering community input to identify barriers to biking and to validate the planning team's prioritized network routes.

What prevents you from riding more often?

- 78% Did not feel safe
- 20% Destinations are too far
- 14% Did not have access to a bike

After reviewing the draft prioritized network, do you believe you would feel safer?

- 78% Somewhat / Much safer
- 16% A bit safer
- 5% No benefit



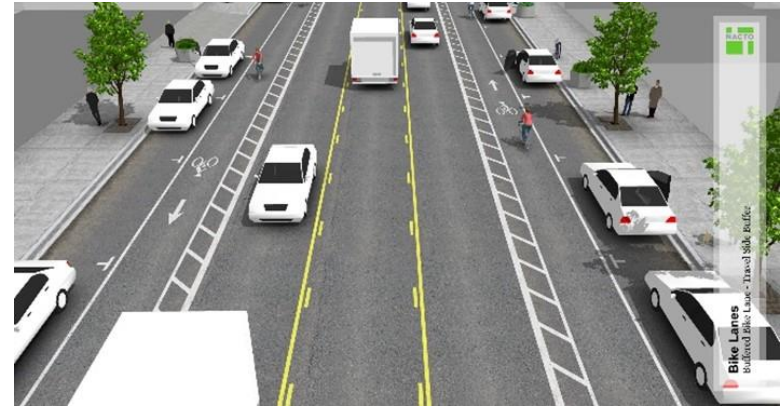
Key Themes from Community Comments

Which of the four street layouts below would you most like to see in your community?

- Separated Cycle Track as first choice (75%)
- Buffered Bike Lane as second choice (71%)
- Tradition Bike Lane stripe as a third choice (68%)
- Shared Roadway as a fourth choice (80%)



Separated Cycle Track (#1)



Buffered Bike Lane (#2)



Tradition Bike Lane (#3)

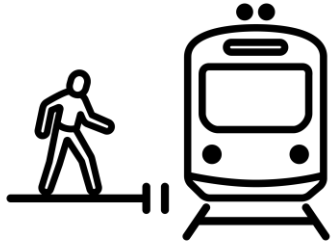


Shared Roadway (#4)



Regional Network

Active Transportation Strategic Plan Network Pillars

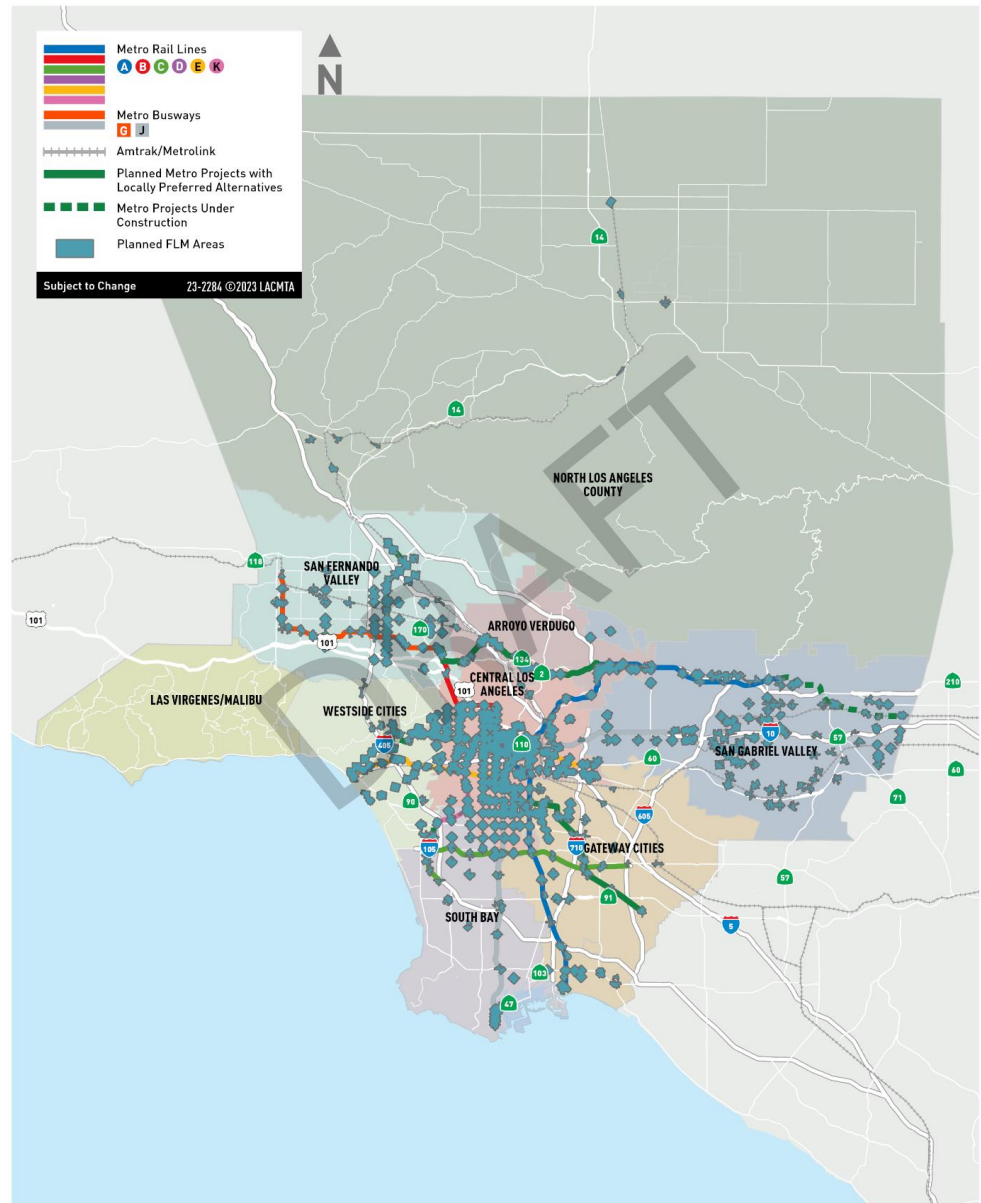


First/Last Mile Areas

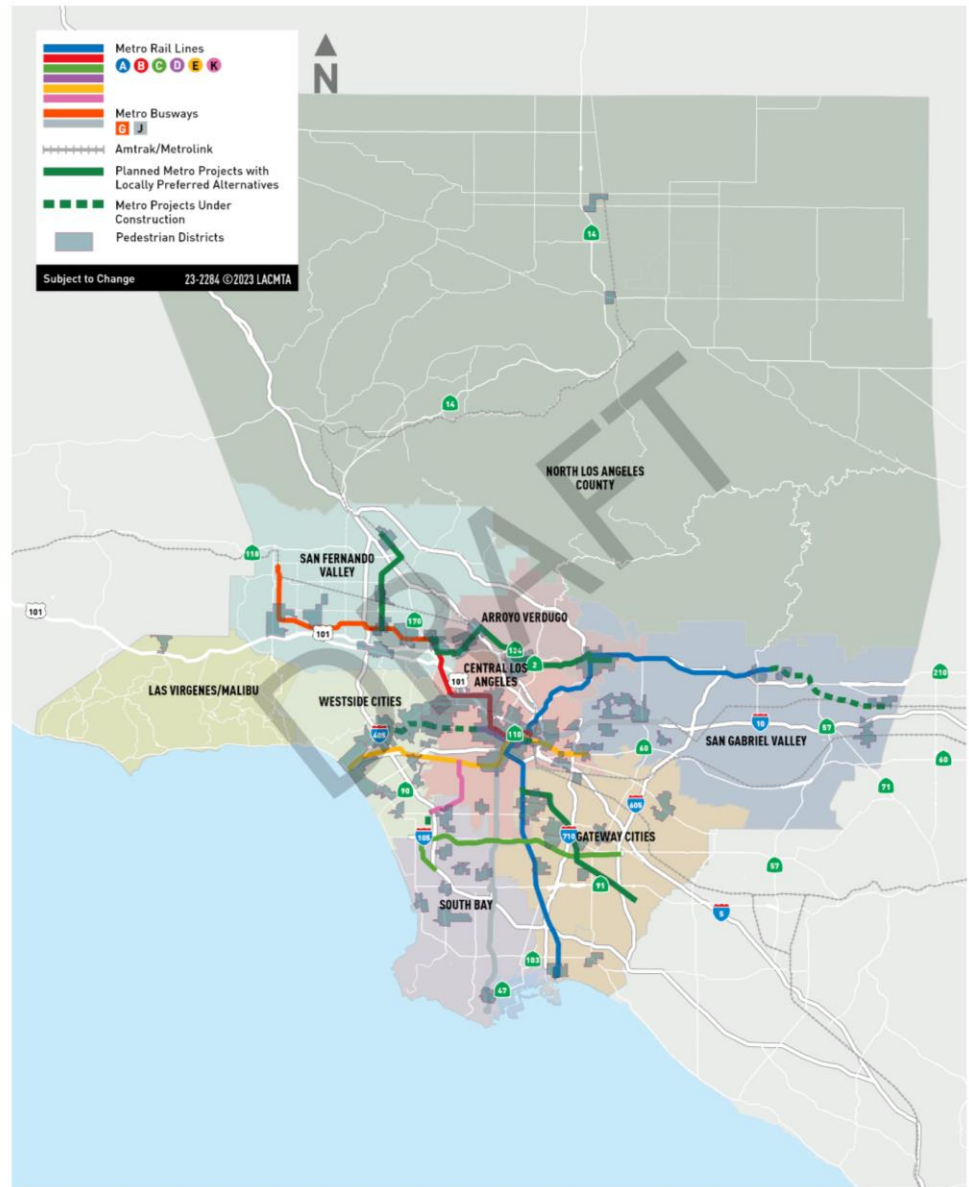
Pedestrian Districts

Regional Bikeways

First/Last Mile Areas



Pedestrian Districts



Regional Bikeways



Cost Estimates for Full Network Buildout

- > Total cost of ATSP network buildout estimated at **~\$36 billion** (*excluding costs associated with areas of overlap*)

Mode	Total Cost	Total Cost (excluding overlap)
FLM Station Areas	\$21.8 B	\$21.8 B
Pedestrian Districts	\$11.0 B	\$6.2 B
Regional Bikeways	\$11.4 B	\$7.8 B
TOTAL		\$35.8 B

Prioritization

Prioritization Criteria	Points	Weights	Total Points
Equity	20	1.5	30
Safety & Comfort	20	3.0	60
Accessibility	20	2.0	40
Connectivity	20	2.0	40
Sustainability	20	1.0	20
Demand & Community Support	20	1.0	20
Project Readiness	FLM - 0	0.5	FLM - 0
	Ped - 0		Ped - 0
	Bike - 20		Bike - 10
Total			FLM - 210
			Ped - 210
			Bike - 220



Near-Term Implementation Goal

- > Near-term goal to implement projects with *Top 2.5%* prioritization score

Mode	Count	Estimated Cost
FLM Areas	16	\$723.9 M
Pedestrian Districts	9	\$962.4 M
Regional Bikeways	20	\$170.3 M
TOTAL	45	\$1.86 B



ATSP Toolkit

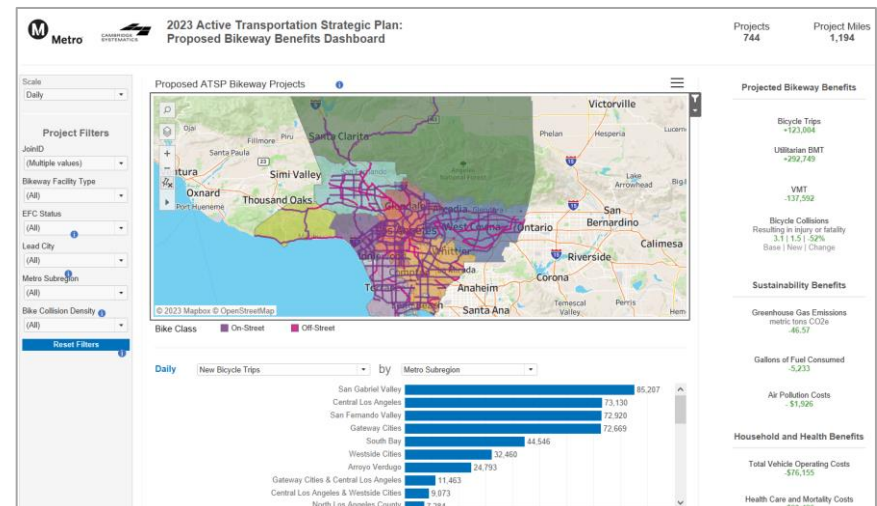
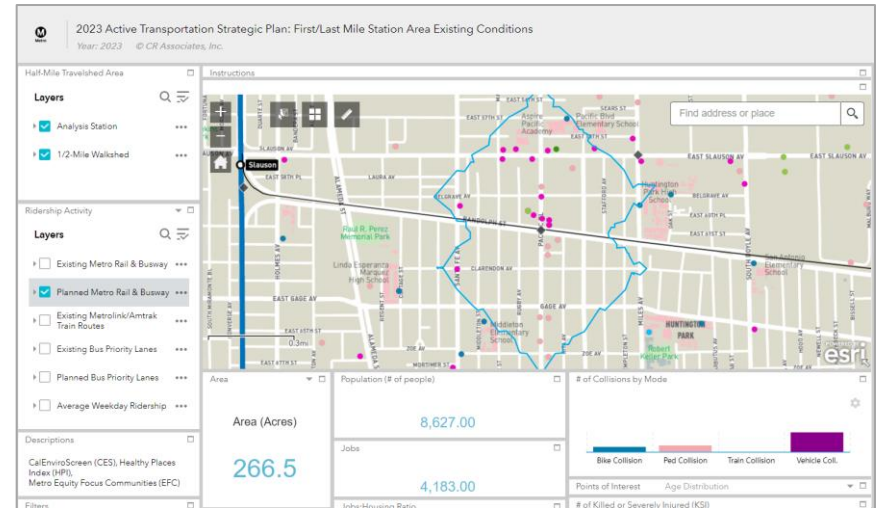
Interactive Platforms

> Interactive platforms now available

- StoryMap
- First/Last Mile Existing Conditions Dashboard
- Bikeway Benefits Dashboard

> For use in planning, communications, and grant assistance

> **Live demo**



Next Steps

Please visit our project website.

> Resources now available at metro.net/atsp:

- [Draft Final Plan](#)
- [StoryMap](#)
- [First/Last Mile Existing Conditions Dashboard](#)
- [Bikeway Benefits Dashboard](#)



Let's Hear From You!

- > It's now time to hear from you.
- > Use the "raise hand" feature or submit questions via the "Q&A" feature.
- > Staff will recognize participants with a raised hand.
- > Call-in participants may press *9 to "raise hand." When recognized, press *6 to unmute.
- > A meeting facilitator will also read questions and/or comments submitted through the Q&A feature.



Next Steps

- > Present to Metro Board in Fall 2023 to request adoption of plan



Thank you!

**WE APPRECIATE YOUR
EXCELLENT
CONTRIBUTIONS!**



Stay connected



Metro[®]



Cameron Palm, *Project Manager*



213.922.4005



atsp@metro.net



metro.net/atsp



[@metrolosangeles](https://twitter.com/metrolosangeles)



[losangelesmetro](https://www.facebook.com/losangelesmetro)