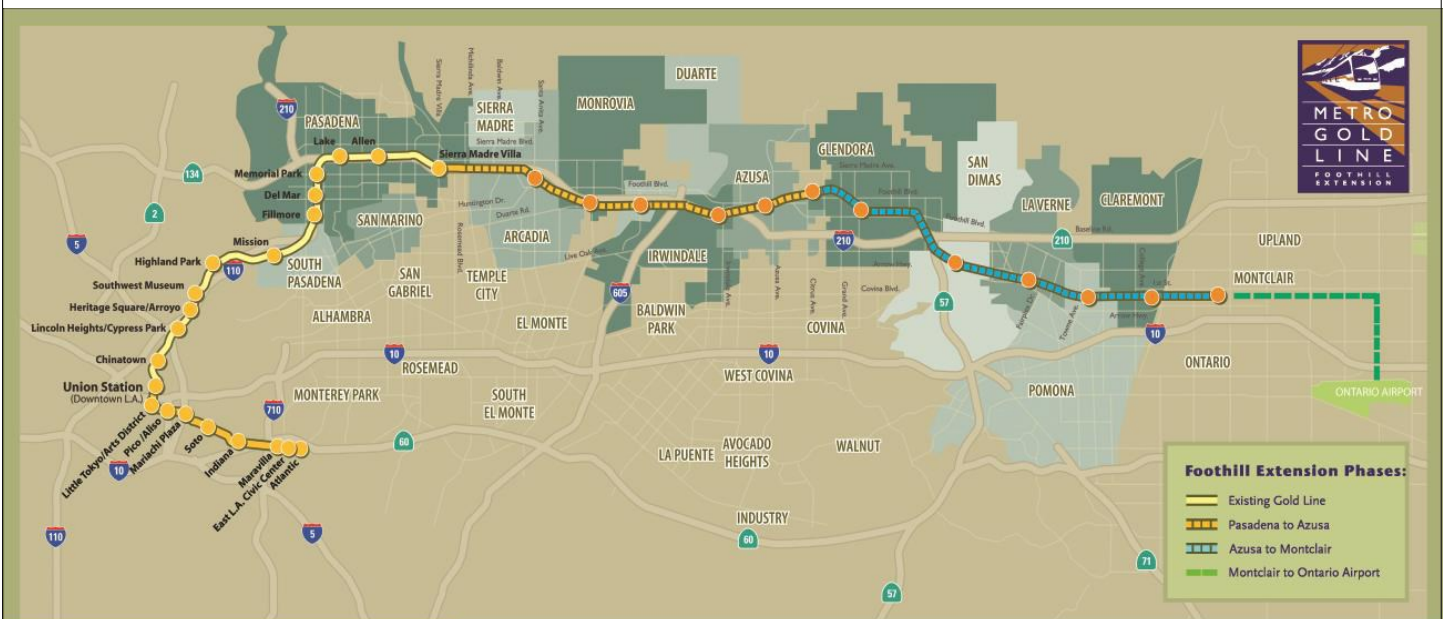


# Metro Gold Line

## Foothill Extension Project

### Monthly Project Status Report

December 2013



Metro Gold Line

Connecting Los Angeles, the San Gabriel Valley and Inland Empire



## TABLE OF CONTENTS

### **PHASE II FOOTHILL EXTENSION PROJECT STATUS**

<b>Project Description .....</b>	<b>3</b>
<b>Pasadena to Azusa Segment .....</b>	<b>4</b>
Management Issues .....	4
Key Activities Completed This Period .....	5
Key Future Activities .....	6
Critical Path Schedule .....	7
Critical Path Float Trend .....	8
Alignment Contract Status .....	9
Alignment Construction Progress This Period .....	11
Facility Construction Progress This Period .....	12
Alignment Construction Progress Next Period .....	13
Facility Construction Progress Next Period .....	14
Alignment Construction Images .....	15
Alignment Change Management Log .....	17
Parking Facilities and Enhancements Contract Status .....	20
Parking Facilities and Enhancements Change Management Log .....	22
<b>Azusa to Montclair Segment .....</b>	<b>23</b>
<b>Ontario Airport Segment .....</b>	<b>24</b>
<b>Financial Status .....</b>	<b>25</b>

## FOOTHILL EXTENSION PROJECT DESCRIPTION

The Authority's mandate is to plan, design and construct a 37-mile light rail link between Downtown Los Angeles and Claremont. In addition, the San Bernardino Associated Governments (SANBAG) has requested that planning be extended one mile inside San Bernardino County to the City of Montclair and then to Ontario Airport.

The Metro Gold Line Phase II (Foothill Extension) corridor includes the cities of Pasadena, Arcadia, Monrovia, Duarte, Irwindale, Azusa, Glendora, San Dimas, La Verne, Pomona, Claremont, and Montclair; and the counties of Los Angeles and San Bernardino (Figure 1). The Foothill Extension is estimated to cost approximately \$1.7 billion.

The Foothill Extension will be built in two segments to align effectively with projected cash flows and financial capacity constraints. The first segment is defined from the Sierra Madre Villa Station in Pasadena to the city of Azusa. Revenue service along this segment is planned for the year 2015. The second segment would include an extension from Azusa to the City of Montclair with revenue service projected for the year 2017 and the third segment will be comprised of an extension from Montclair to the Ontario Airport.

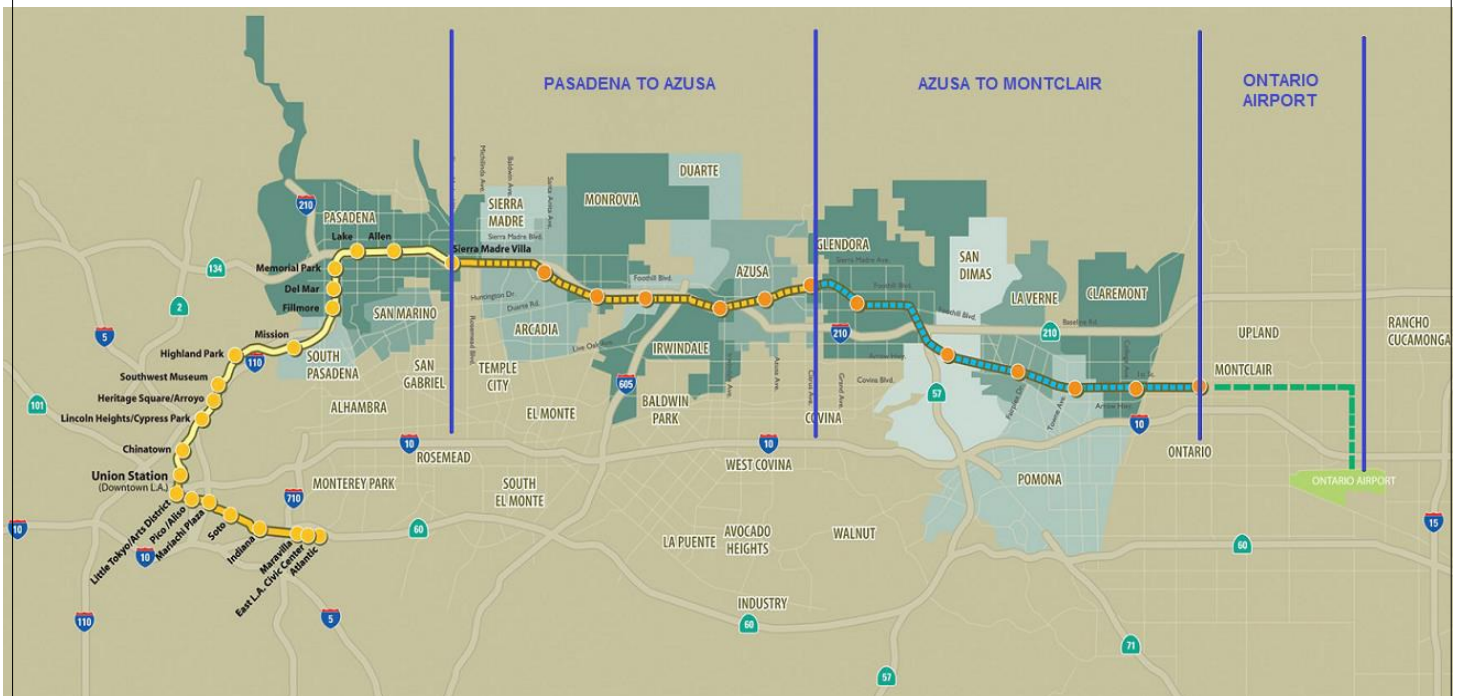


Figure 1: Metro Gold Line Foothill Extension Alignment



## **Pasadena to Azusa Segment**

### **MANAGEMENT ISSUES**

#### **Metro Betterments**

During the design process Metro staff have identified betterments that Metro staff would like to add to the project. Metro has provided a final disposition on all but a few items. Authority staff continues to work with Metro staff to resolve the remaining items.

#### **Southern California Edison (SCE) Overhead Electrical Line Relocation**

An SCE overhead electrical line stretching from Irwindale Avenue to the MillerCoors property requires an alignment adjustment to accommodate the Irwindale Traction Power Supply Substation (TPSS) and the parking structure for the Irwindale Station. There are several complications with this relocation, including easement issues with MillerCoors, easement issues between Metro and SCE, and power shutdown issues with MillerCoors. Authority staff has reached a solution to this issue with the Parking Facilities design-build contractor, Webcor; the Irwindale parking structure will be relocated south of SCE's easement to avoid any conflict with the overhead line. This item will be removed from the Management Issues section next period.

#### **SCE Easement for Mountain Avenue Relocation**

SCE recently instituted a policy of requiring an easement in lieu of a license agreement for new construction of its facilities. As such, SCE has requested an easement for the relocation of the SCE overhead lines necessary for the realignment of the Mountain Avenue intersection. Metro's policy has historically been to grant license agreements for these types of utilities crossing in its right-of-way. Metro has agreed to grant easements for SCE relocations on the Crenshaw and Expo 2 project but has recently refused to grant easements on the Foothill Extension project. Due to the disagreement between SCE and Metro regarding easements, SCE has refused to schedule the relocation at Mountain Avenue until Metro agrees to grant an easement the relocation. Metro has now agreed to grant the easement for the SCE relocation. This item will be removed from the Management Issues section next period.

## **KEY ACTIVITIES COMPLETED THIS PERIOD**

Staff continued to attend coordination meetings with cities along the alignment

Authority staff continues to meet with Metro staff to review and discuss the status of the Pasadena to Azusa segment

Held regular meetings with the C1135 (DB2) contractor, Foothill Transit Constructors (FTC) and participated in construction site visits and audits

FTC reports the following SBE statistics for the month of August:

- Current SBE commitment: \$ 59,500,000
- SBE percent committed versus value of Project: 13.79%
- Overall Authority Project SBE goal: 16%

FTC reports the following approximate safety statistics to date:

- 498,263 total work hours performed by FTC, Mass Electric, and Subcontractors
- 4 recordable injuries reported
- 0 lost time injuries reported

Continued to review revised AFC drawings for C1135 project

Continued installation of underdrain and sub-ballast throughout the project

Continued trackwork at the Gold Line Operations Campus (Campus)

Completed MOW Storage Canopy embedded track sub-ballast installation at the Campus

Continued bridge work at Foothill, Santa Anita Avenue, Kincaid, Rosemead, Michillinda, and Baldwin

Began bridge work at Huntington

Completed Saw Pit Wash, Palm and Citrus bridges

Continued work at Duarte, Monrovia and Arcadia stations

Began work at Azusa-Downtown and Azusa-Citrus stations

Continued construction of San Gabriel, California, and 1st & Santa Clara crossings

Continued installation of track between San Gabriel River Bridge and MillerCoors

Began light rail mainline track

Continued to hold design and coordination meetings with DB3 contractor, Webcor Builders, for the Intermodal Parking Facilities and Enhancements Contract 1150

Completed reviews of 100% design submittals for Arcadia, Monrovia, and Azusa-Citrus facilities

Completed eight AFC drawing packages for C1150 project to date

C1150 design-build contractor continued work at Arcadia, Monrovia, and Azusa parking facilities, Irwindale intersection, and Michillinda and Soldano TPSS sites



## **KEY FUTURE ACTIVITIES**

Continue discussions with corridor cities regarding the project

Continue management of the Alignment contract, which will include oversight of construction activities and preparation for start-up activities

Continue to meet with Intermodal Parking Facilities and Enhancements Project contractor, Webcor Builders regarding design of the Project

Continue to attend to any issues that may come up by the cities or other stakeholders along the alignment

Complete trackwork at the Campus

Complete construction of the bridges at Foothill, Santa Anita Avenue, Huntington, Rosemead, Michillinda, Baldwin, and Kincaid

Complete construction of the Duarte, Monrovia, and Arcadia Stations

Finish work at California, San Gabriel, and 1st and Santa Clara grade crossings

Begin work at Myrtle and Virginia grade crossings

Finalize design for first three Parking Facilities

Finalize the following property acquisitions:

- Arcadia:

1. Parcel 1301a – Motion for Possession filed with the court
2. Parcel 1301b – Negotiating
3. Parcel 1305 (108 E. Santa Clara Ave) – In escrow
4. Parcel 1308 (223 N. First Ave) – Motion for Possession filed with the court
5. Parcel 6039 (325 N. Santa Anita Ave) – PSA out for signature

- Monrovia:

1. Parcel 1802/6035/6030 (1522 S. Mayflower Ave) – Ready for Purchase Agreement to be signed
2. Parcel 1805/6035/6030 (1602 S. Mayflower Ave) – Ready for Purchase Agreement to be signed
3. Parcel 6019a (1703 S. Mountain Ave) – In escrow

- Duarte:

1. Parcel 6041/6042 (1500 Duarte Rd) – Accepted. Purchase and sale agreement being reviewed by counsel

- Irwindale:

1. Parcel 6028 (16009 Avenida Padilla) – Motion for Possession filed with the court

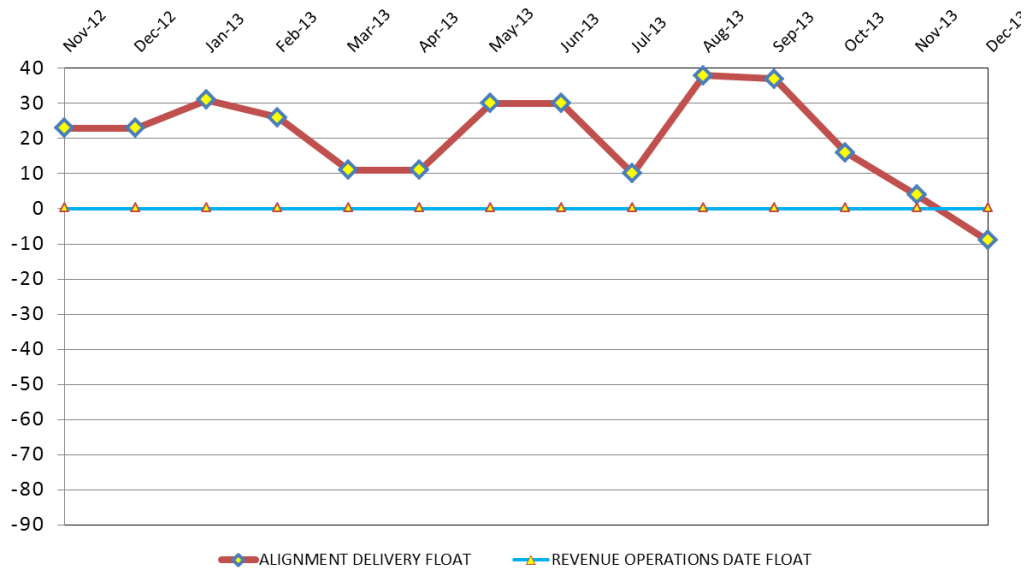
- Azusa:

1. Parcel 6032 (819 W. 6th St) – In escrow
2. Parcel 6033 (809 E. Santa Fe) – Negotiating with property owner





### CRITICAL PATH FLOAT TREND



**FOOTHILL EXTENSION FUNDING AGREEMENT MILESTONES**  
 Alignment Delivery Date - October 31, 2015  
 Revenue Operation Date - November 30, 2016

**Revenue Operations Date Critical Path - (0 Calendar Days / 0 Work Days)**

The Metro Light Rail Vehicle Fabrication remains on the critical path this period. The delay issuing Notice to Proceed and changes to the anticipated delivery of the 15 vehicles have placed this work as a priority to achieve ROD. The anticipated delivery of the 56th of 78th vehicle is expected to be delivered in August 2016. Due to the critical path delays, the project schedule contingency was reduced to mitigate the impacts on the adopted Metro Revenue Operations Date. The critical path continues through Metro Pre-Revenue Operations, and schedule contingency (2 months). The Metro Revenue Operations Date is currently on schedule for November 30, 2016. However, Metro is forecasting a March 2016 Revenue Operations Date.

**Alignment Delivery Date Critical Path - (-9Calendar Days / -6 Work Days)**

This period, the Foothill Freight Bridge fabrication and installation remains on the critical path. The steel girder fabrication slipped this period, and as a result it is potentially impacting the Alignment Delivery. The C1135 Design-Build Contractor is evaluating possible solutions to mitigate the potential schedule impacts due to the fabrication delay.

Upon completion of the freight bridge, the critical path continues through the installation of freight track. After the freight track is completed, the critical path continues through the installation of the Segment 4 LRT track, which will be followed by the Segment 4 OCS installation and testing. Systems integration testing will commence after OCS testing is complete. Upon the completion of Systems Integration testing, FTC will achieve Substantial Completion and turn-over to Metro for Pre-Revenue Testing.

Other elements of construction work, which are in progress and near critical are Segment 2 & 3 Retaining Walls, Segment 3 Ductbank installation, and Rosemead Bridge Rehabilitation. All elements are pre-requisite for track installation.

**Project Float**

The project float for the Revenue Operations Date remains unchanged. The critical activities on this path are on schedule to meet the Target Revenue Operations Date of November 2016. The Alignment Delivery Date float value slipped 13 days this period. The Alignment Delivery Date is currently 9 days ahead of the October 31, 2015 deadline.



**Description:** Alignment Design / Build

**Status:** December 15, 2013

**Contract No.:** C1135

**Contractor:** Foothill Transit Constructors (Kiewit-Parsons J.V.)

**Cost Summary:**

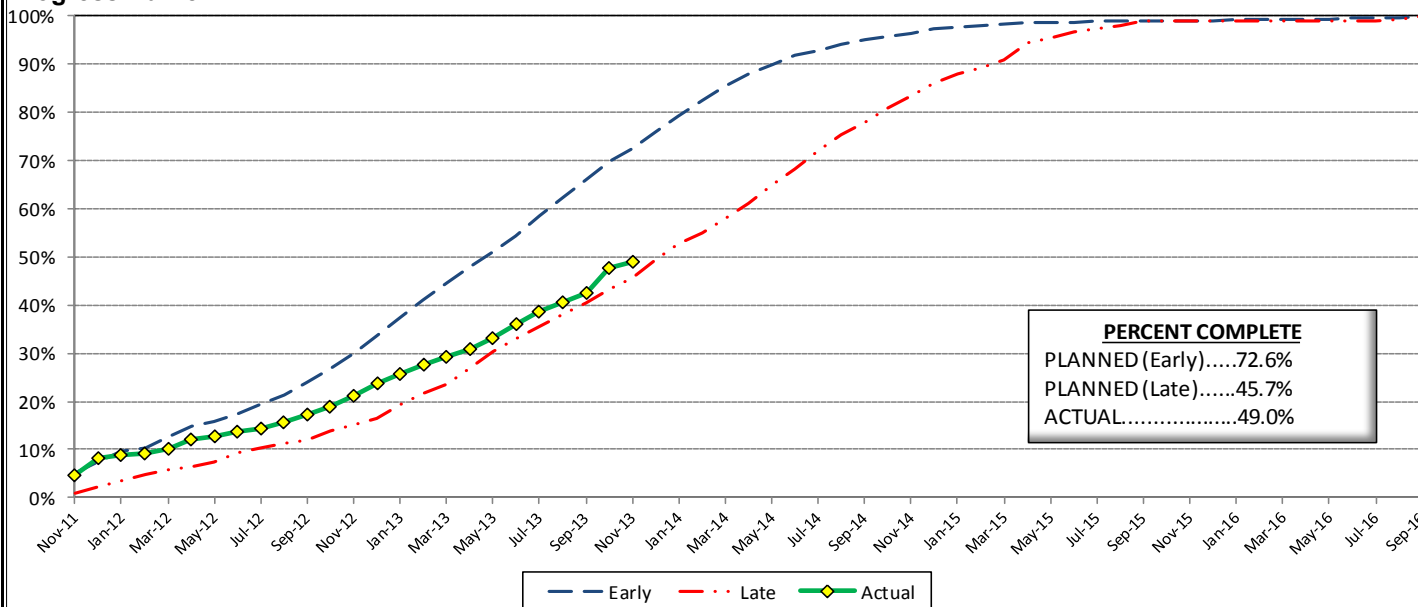
	Million(s)
<b>CONTRACT</b>	
Contract Award Value:	485.9
Executed Change Orders:	8.5
Current Contract Value:	494.3
Potential Change Orders:	2.5
Current Forecast:	496.9
Earned Value/Actual Cost	237.8
<b>AUTHORIZATION FOR EXPENDITURE</b>	
Budget	507.6
Commitment	503.6
Balance	6.7

**Cost Assessment:**

This period the Contract forecast increase was negligible and the net increase was less than \$34,000. The major PCO's issued this period were for PCO 063 - *M&O Volume Control for PA Speakers*, PCO 056 - *M&O Parts Carousel Extended Warranty*, and PCO060 - *M&O Generator Load Bank*. The major offsetting cost reductions were due to CO 063 - *Home Depot Striping & Signing*, and PCO 062 - *Delete Equipment at ROC*.

The Design-Build Contractor has earned 237.8 Million and is currently 49.0% complete. The progress is currently 23.5% behind the early planned curve, which is due to fabrication and delivery progress for materials such as *Special Track Work, M&O Structural Steel, M&O Equipment, and Bridge Girders*. In addition, the track work installation is behind the baseline plan.

**Progress Curve**



**Schedule Summary:**

Contract Award:	07/27/11
Interim Notice to Proceed (INTP) :	11/03/11
Original Contract Duration:	1,780 Calendar Days
Current Contract Duration:	1,780 Calendar Days
Elapsed Time from NTP:	773 Calendar Days

**Contract Milestones**

Milestones	Description	Original Contract	Current Contract	Forecast	Variance
1	Substantial Completion	09/23/15	09/23/15	11/09/15	(47)
2	Punchlist Complete	06/19/16	06/19/16	08/05/16	(47)
3	Final Completion	09/17/16	09/17/16	11/03/16	(47)
4	Access - IFS Br.	12/15/12	12/15/12	12/15/2012 A	0
5	Test Track Complete	03/27/15	03/27/15	05/01/15	(35)
6	Colorado Br. Demo Complete	02/01/12	02/01/12	6/15/2012 A	(135)

**Schedule Assessment:**

The critical path continues to run through the Foothill Freight Bridge construction. This period, the critical path slipped due to anticipated delivery delays due resulting from the Foothill Freight fabrication progress. The fabrication delay will impact the completion of the bridge installation and the final completion of the freight track re-alignment. As a result, the late completion of this work will impact the start of Segment 4 track installation and the remainder of the critical path, which continues through the OCS installation and testing, followed by systems integration testing.

The schedule contains minimal float between all Segments and will require concurrent installation of track work in Segments 1, 2 and 4.

The Test Track Completion is forecast to be available on May 1, 2015, which is 35 days behind the target date.



<b>Description:</b> Alignment Design / Build	<b>Status:</b> December 15, 2013
<b>Contract No.:</b> C1135	<b>Contractor:</b> Foothill Transit Constructors (Kiewit-Parsons J.V.)

<p><b>Progress Completed This Period</b></p> <p><b>Design</b></p> <ul style="list-style-type: none"> <li>• Submit AFC Design - M&amp;O Tramming Table Structural Slab</li> <li>• Submit AFC Design - 3M Drainage</li> <li>• Submit AFC Design - Grading &amp; Drainage at Totten Tubes</li> <li>• Submit AFC Design - Virginia Crossing</li> <li>• Submit AFC Design - Roadway 1st/Santa Clara Ave</li> <li>• Submit AFC Design - Train Control Book of Plans (Zone 7)</li> <li>• Submit AFC Design - Train Control Book of Plans (Zone 11)</li> <li>• Submit AFC Design - Traction Power Package 12 (Yard)</li> <li>• Submit AFC Design - Communications Parking Structures 'B'</li> <li>• Submit 100% Design - Track Wayside Signage</li> </ul> <p><b>Construction</b></p> <ul style="list-style-type: none"> <li>• See "Construction Progress This Period"</li> </ul>
--

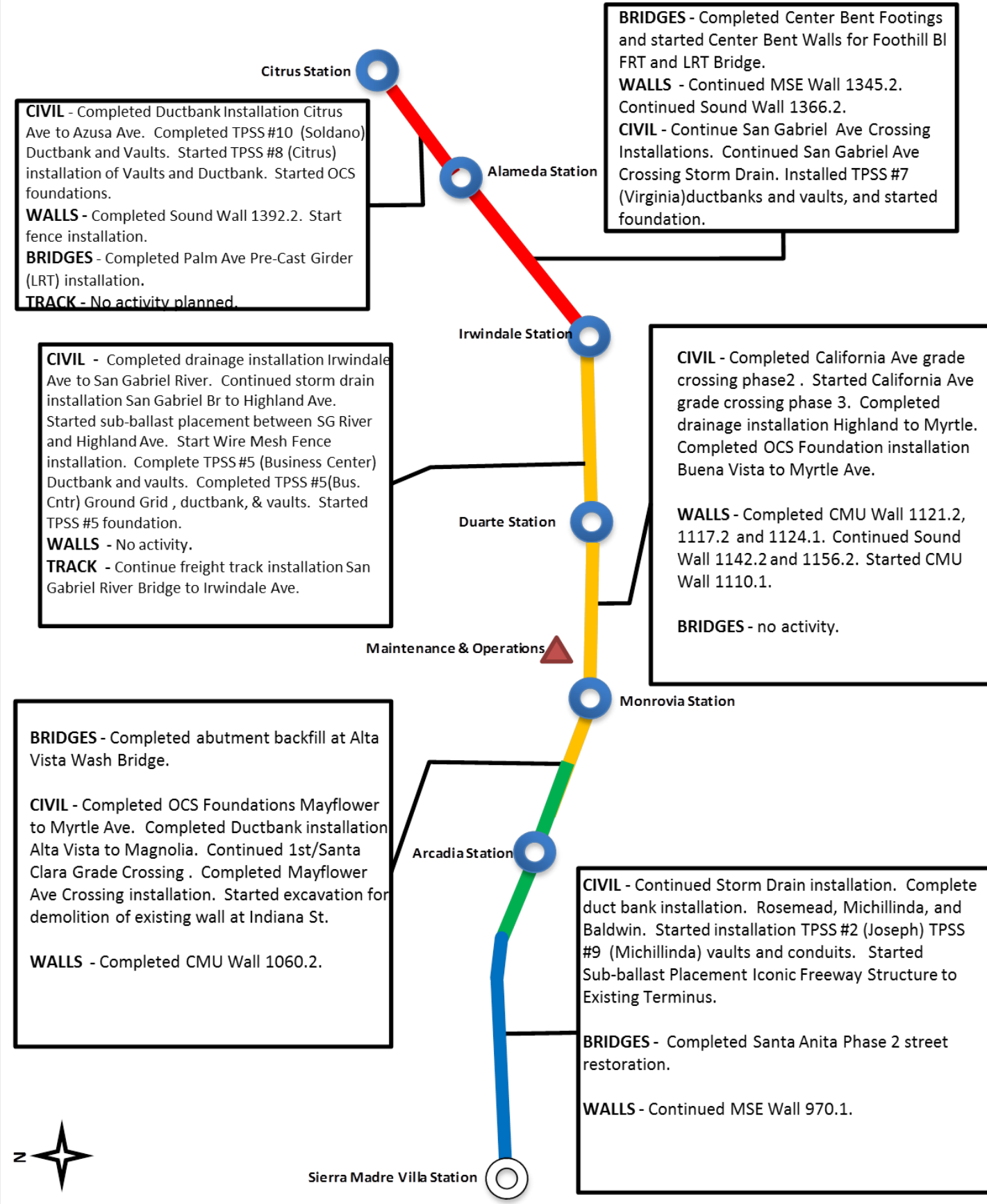
<p><b>Activities Planned Next Period</b></p> <p><b>Design</b></p> <ul style="list-style-type: none"> <li>• Submit 100% Design - SCADA</li> <li>• Submit AFC Design - Rockvale Waterline Casing</li> <li>• Submit AFC Design - M&amp;O Drainage Improvements</li> <li>• Submit AFC Design - M&amp;O Body Shop Changes</li> <li>• Submit AFC Design - Bridge Stray Current Control</li> <li>• Submit AFC Design - Train Control Book of Plans (Zone 4)</li> <li>• Submit AFC Design - Train Control Book of Plans (Zone 12)</li> </ul> <p><b>Construction</b></p> <ul style="list-style-type: none"> <li>• See "Construction Progress Next Period"</li> </ul>
---

<p><b>Areas of Concern</b></p> <ul style="list-style-type: none"> <li>• <b>Grade Crossing Schedule.</b> The Grade crossing durations and schedules are slipping due to productivity. The Authority is working with the Design-Build Contractor to plan grade crossing activities and complete the work within the constraints established by Cities. The Design-Build Contractor has implemented the revised grade crossing sequence and has mitigated potential CPM schedule delays. However, the Design-Build Contractor has indicated in the revised schedule, that the re-sequence was due to additional schedule requirements by the Cities and may require additional costs.</li> </ul>
---

<p><b>Areas of Concern (Continued)</b></p> <ul style="list-style-type: none"> <li>• <b>Segment 3 Grade Crossing Property Acquisitions.</b> The Design-Build Contractor has been late delivering parcel legal descriptions in a timely manner. There is a potential schedule impact to the Segment 3 grade crossing construction and schedule if the parcel legal descriptions are not approved. The Authority will attempt to mitigate potential delays by obtaining Right-of-Entry from property owners prior completing negotiations.</li> </ul>
--



### ALIGNMENT CONSTRUCTION PROGRESS THIS PERIOD





**FACILITY CONSTRUCTION PROGRESS THIS PERIOD**

**Citrus Ave Station**

**STATION** - No activity.  
**PARKING** - No activity.

**STATION** - Started installation of water line, station grounding grid and underground station conduits. Completed storm drain installation.  
**PARKING** - No activity this period.

**Alameda Station**

**STATION** - No activity.  
**PARKING** - Completed the installation of traffic signal (with temporary poles). Completed Phase 1 (Median) street restoration at N. Irwindale Avenue. Started Phase 2 (North Bound) street restoration at N. Irwindale Ave.

**Irwindale Station**

**CIVIL** - Continued Shamrock 8" sewer. Started Shamrock 24" storm drain. Started TPSS #4 "Yard" ductbank and structural excavation for foundation slab. Placed sub-ballast at southwest section.  
**TRACK** - Started embedded track installation at Service & Inspection, Body Shop, and Paint Shop. Continued Ballast and track installation at North Storage Track.  
**STRUCTURES** - Completed Wall 'A' Vehicle Barrier. Continued Cleaning Platform. Continued M&O Building Foundations & Slab on Grade. Completed Car Wash Settling Pit structure backfill.

**STATION** - Completed station decks and ramps. Started concrete patching and finishing.  
**PARKING** - No activity this period.

**Duarte Station**

**STATION** - Continued North and South platform decks.  
**PARKING** - Completed site grading.

**Maintenance & Operations**

**Monrovia Station**

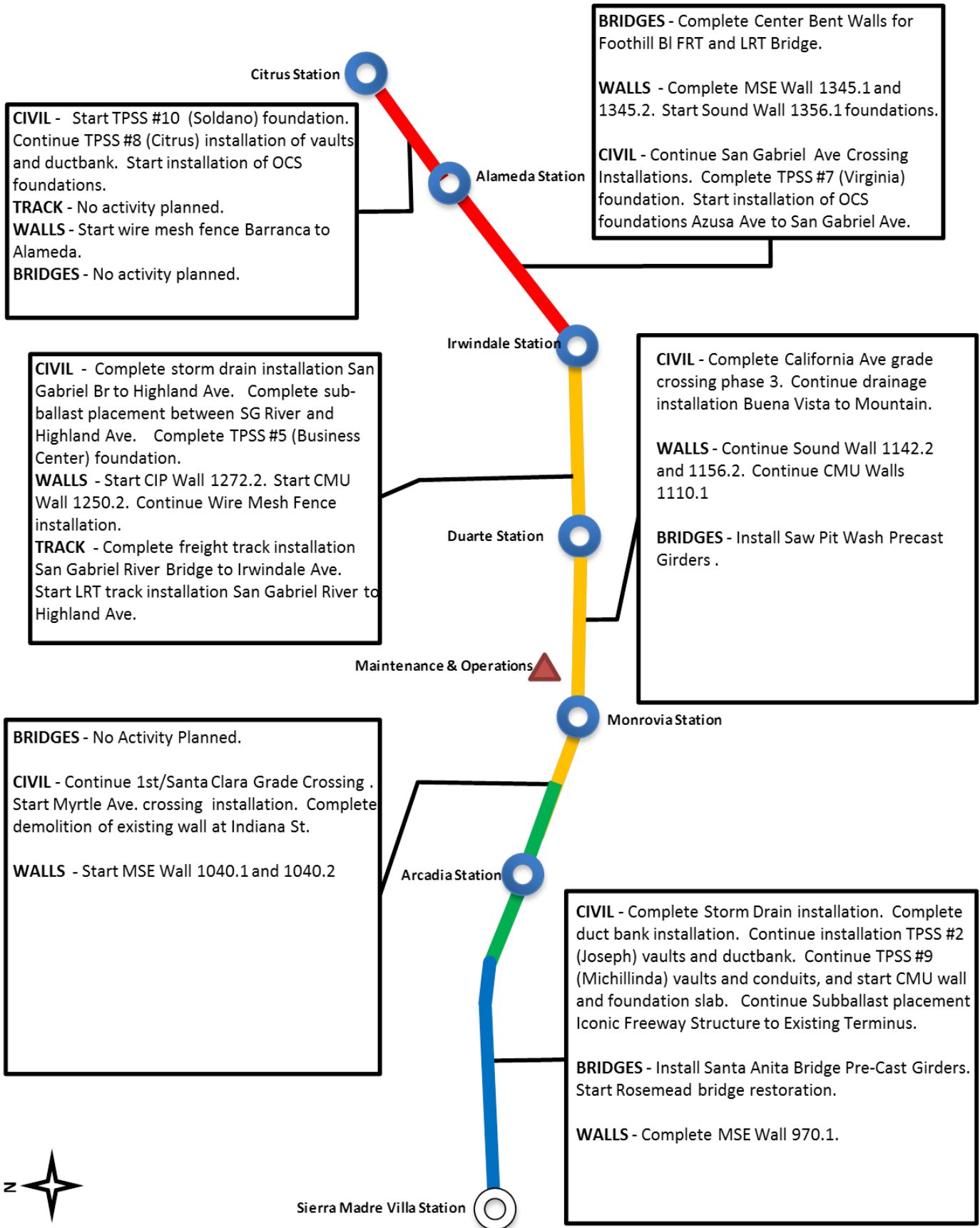
**STATION** - started platform formwork and rebar installation. Completed the first of three concrete deck pours for station platform.  
**PARKING** - Completed ductbank installation for Time-Warner Cable and Southern California Edison. Time-Warner Cable completed cable relocation.

**Arcadia Station**



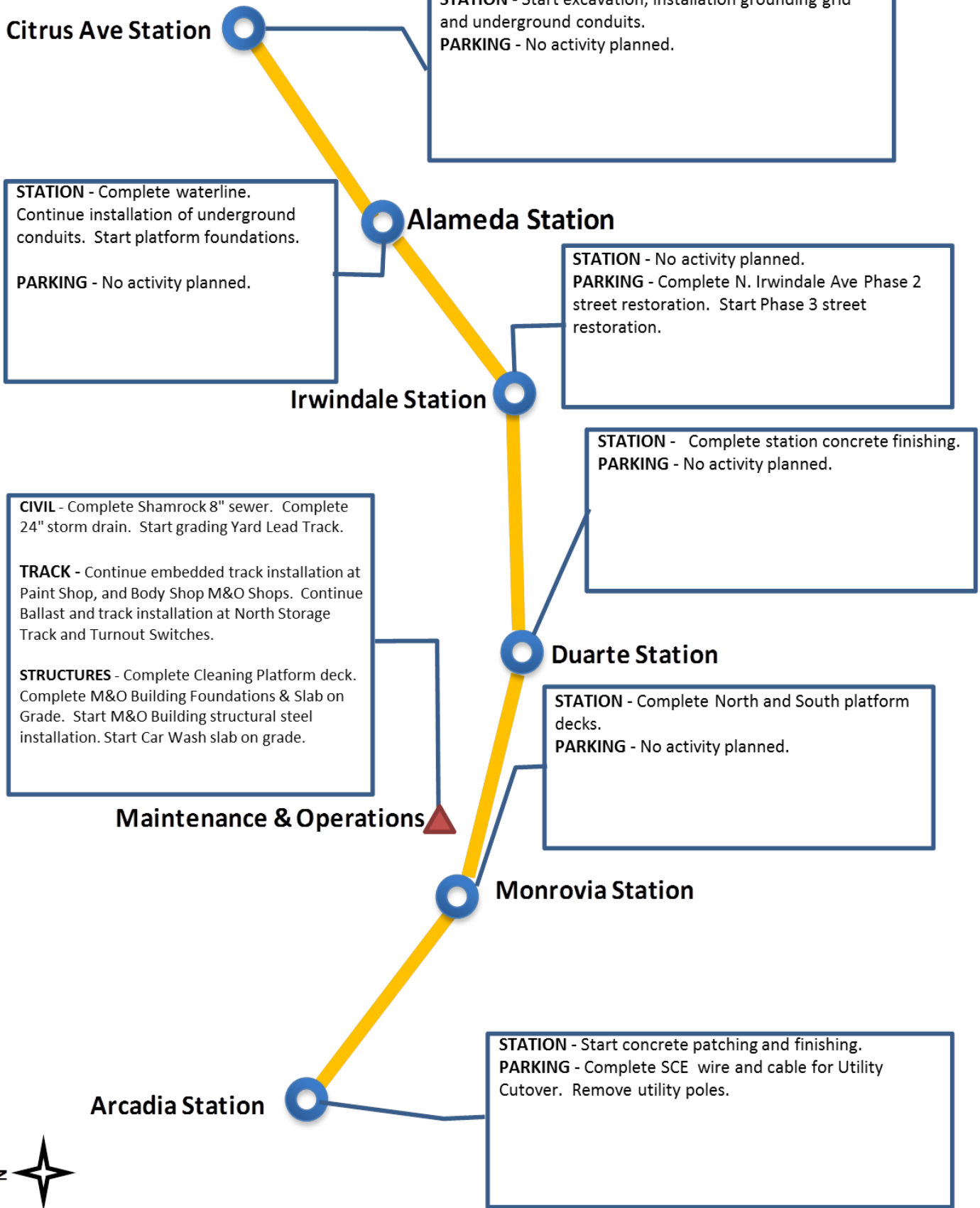


## ALIGNMENT CONSTRUCTION PROGRESS NEXT PERIOD





**FACILITY CONSTRUCTION PROGRESS NEXT PERIOD**



## ALIGNMENT CONSTRUCTION IMAGES

Segment 1: Underdrain work



Segment 2: Ballast placement between Highland and San Gabriel River Bridge

Segment 3: Monrovia Station — Platform  
Deck Forms



**ALIGNMENT CONSTRUCTION IMAGES (CONTINUED)**



Segment 4: Azusa-Downtown Station —  
Form and rebar work

Segment 4: Foothill Bridge —  
Pier concrete form removal



M&O: Sub-ballast complete at  
MOW Storage Canopy



Change Management Log

Date: 1/15/2014

Page: 1 of 3

Project: C1135 Alignment - FTC Contract #: C1135

Original Contract Amount:	\$485,867,000				
Approved Change Orders:	\$8,826,074	1.82%	Pending Change Orders:	\$0	0.00%
Current Contract Total:	\$494,693,074		Pending Contract Total:	\$494,693,074	1.82%

Change Orders

Number	Change Management	Title	Initiated Date	Approved Date	Outstanding Days	Time Extension	Amount
<b>EXECUTED Change Orders</b>							
001.00	000.00	Interim NTP	11/3/2011	11/3/2011	0		\$0
002.00	013.00	Colorado Bridge Haz Mat	5/17/2012	5/18/2012	1		\$121,382
002.01	013.01	Colorado Bridge HazMat - Final	9/5/2012	9/7/2012	2		\$13,164
003.00	001.00	Sound Wall Deletion - Duarte Road	7/12/2012	7/18/2012	6		(\$74,707)
004.00	018.00	Revise Block Design - CBD Calc	8/23/2012	8/29/2012	6		\$3,986
004.01	018.01	Revise Block Design - CBD Calc - 2	9/5/2013	9/11/2013	6		\$0
005.00	023.00	Wayside Signal Aspect Revision	9/6/2012	9/7/2012	1		\$26,072
005.01	023.01	Wayside Signal "Call On" Function	10/30/2013	11/1/2013	2		\$75,169
006.00	040.00	Arcadia Frieze, Bench-Artist Design	9/6/2012	9/10/2012	4		\$13,683
006.01	040.01	Arcadia Frieze, Bench-Construction	3/7/2013	3/12/2013	5		\$155,894
007.00	019.02	Soils Testing Abutments & Fdns	9/14/2012	9/18/2012	4		\$44,993
008.00	041.00	Unknown Utilities RFCN 005 006 008	9/14/2012	9/18/2012	4		\$132,450
009.00	038.00	Illuminate City Names @ Stations	9/18/2012	9/24/2012	6		\$184,657
010.00	046.00	SGRB - Lead Based Paint Remediation	9/21/2012	9/24/2012	3		\$244,536
011.00	004.00	Station Architectural Changes	10/11/2012	10/12/2012	1		\$443,950
012.00	003.01	Systems and Testing for Added TPSS	12/13/2012	12/14/2012	1		\$1,443,193
013.00	005.02	IDIQ Comm Contract (Rev 2)	12/14/2012	1/22/2013	39		\$698,259
014.00	060.00	Sewer Encasement Changes in Azusa	12/18/2012	1/24/2013	37		\$141,354
015.00	037.02	M&O - Materials Storage Revisions	12/26/2012	1/15/2013	20		\$62,862
015.01	037.03	M&O Storage Shelving Revisions	9/16/2013	9/19/2013	3		\$20,380
016.00	002.00	Relocation of Access Road to 3M Fac	12/26/2012	1/16/2013	21		\$53,814
017.00	025.00	3 Electrical Casings for ALW	2/27/2013	3/1/2013	2		\$219,033
018.00	073.00	Hazardous Abatement at Bridges	1/15/2013	2/6/2013	22		\$1,081,803
019.00	054.00	City of Hope Conduits	1/11/2013	1/22/2013	11		\$34,313
020.00	059.00	Citrus TPSS Transformer Pad Changes	2/6/2013	2/7/2013	1		\$34,536
021.00	075.00	Demo & Replace Palm Dr. Roadway	2/7/2013	2/14/2013	7		\$90,365
022.00	077.00	M&O Differing Site Conditions; Pt 1	2/13/2013	2/15/2013	2		\$66,360
022.01	093.00	M and O DSC T and M Work Part 2	3/8/2013	3/12/2013	4		\$66,625
022.02	103.00	M and O DSC Part 3	3/27/2013	3/28/2013	1		\$35,211
022.03	115.00	DSC at M and O Part 4	5/3/2013	5/7/2013	4		\$5,706
023.00	089.00	Contaminated Soil Abatement	2/26/2013	2/27/2013	1		\$422,068
024.00	068.00	Monrovia Sound Wall Panel Change	2/26/2013	2/28/2013	2		(\$24,150)
025.00	052.00	Santa Anita Trail Detour	3/8/2013	3/12/2013	4		\$27,691
026.00	070.00	Block Type Change at M&O Building	3/26/2013	3/26/2013	0		\$35,016
027.00	065.00	M&O IT Changes-Duct Banks/Conduits	3/26/2013	3/26/2013	0		\$88,650
027.01	065.01	M&O IT Changes - Power to WAP	9/4/2013	9/6/2013	2		\$73,049
028.00	039.01	Delete Layover Building	4/11/2013	4/12/2013	1		(\$313,832)
029.00	095.00	8in Sanitary Sewer Line- Alameda Av	4/23/2013	4/25/2013	2		\$226,089
029.01	095.01	Alameda Sewer Line Revised Scope	11/22/2013	11/26/2013	4		(\$37,425)
030.00	102.00	M&O-Disconnect Switches, Insulators	4/23/2013	4/25/2013	2		\$67,817
031.00	110.00	Rmv Abandoned Utility Line @ Dalton	4/23/2013	4/25/2013	2		\$1,562
032.00	104.00	Highland Ave Abandoned CMP sleeves	5/1/2013	5/3/2013	2		\$15,005
033.00	114.00	Remove contaminated wood culvert	5/3/2013	5/7/2013	4		\$4,714
034.00	128.00	M&O Backup Power/Generator Changes	5/13/2013	5/21/2013	8		\$121,340
035.00	083.00	M&O Vehicle Sanding System Changes	5/21/2013	5/24/2013	3		\$27,463



Change Management Log

Project: C1135 Alignment - FTC Contract #: C1135

Change Orders

Table with columns: Number, Change Management, Title, Initiated Date, Approved Date, Outstanding Days, Time Extension, Amount. Lists various change orders with their respective dates and costs.

Subtotal: \$8,826,074

Subtotal: \$8,826,074

Total: \$8,826,074

Open PCOs

Table with columns: PCO Number, Title. Lists open PCOs such as 022.02 M&O IT Changes - Remaining Work.

Open RFCs

Table with columns: RFC Number, Title. Lists open RFCs such as 060.00 Alameda South Side Water Ln Change.



### Change Management Log

Date: 1/15/2014

Page: 3 of 3

**Project: C1135 Alignment - FTC Contract #: C1135**

#### Open PCOs

PCO Number	Title
OPEN	
045.00	Move Mountain Interlocking Bungalow
046.00	1st/Santa Clara Grade X-ing Changes
047.00	M&O Body Shop Changes
049.02	M&O Trimming Table Changes (Rev. 2)
050.00	M&O Car Wash Betterments
052.00	Alameda Utility Changes
053.01	Irwindale Ramp Changes (Rev 1)
054.00	Costco Emergency Gate-Path to POS
055.00	Soldano Fence Credit
056.00	M&O Parts Carousel Extended Warranty
057.00	Added Sound Wall East of IFS
058.00	Added Lighting at SGRB
059.00	Mayflower Driveway/Wall Credit
060.00	M&O - Generator Load Bank
061.00	M&O - Electrical Sub-meters
062.00	Delete Equipment at ROC
063.00	M&O-Volume Control for PA Speakers

#### Open RFC Notices

Number	Title
022.00	M and O Signaling and Train Control
037.00	DSC at Santa Anita Wash Abutment 1
041.00	M and O Facility Fire Flow Rate
044.00	DSC Utility at Azusa Avenue
057.00	Rmvl Contmnd Wd Mtrls Stanta Anita
058.00	Removal of IR 0271 Abandoned Utiliit
062.00	Acceleration at California Ave



**Description:** Intermodal Parking Facilities & Enhancements **Status:** December 15, 2013

**Contract No.:** C1150

**Contractor:** Webcor Builders

**Cost Summary:**

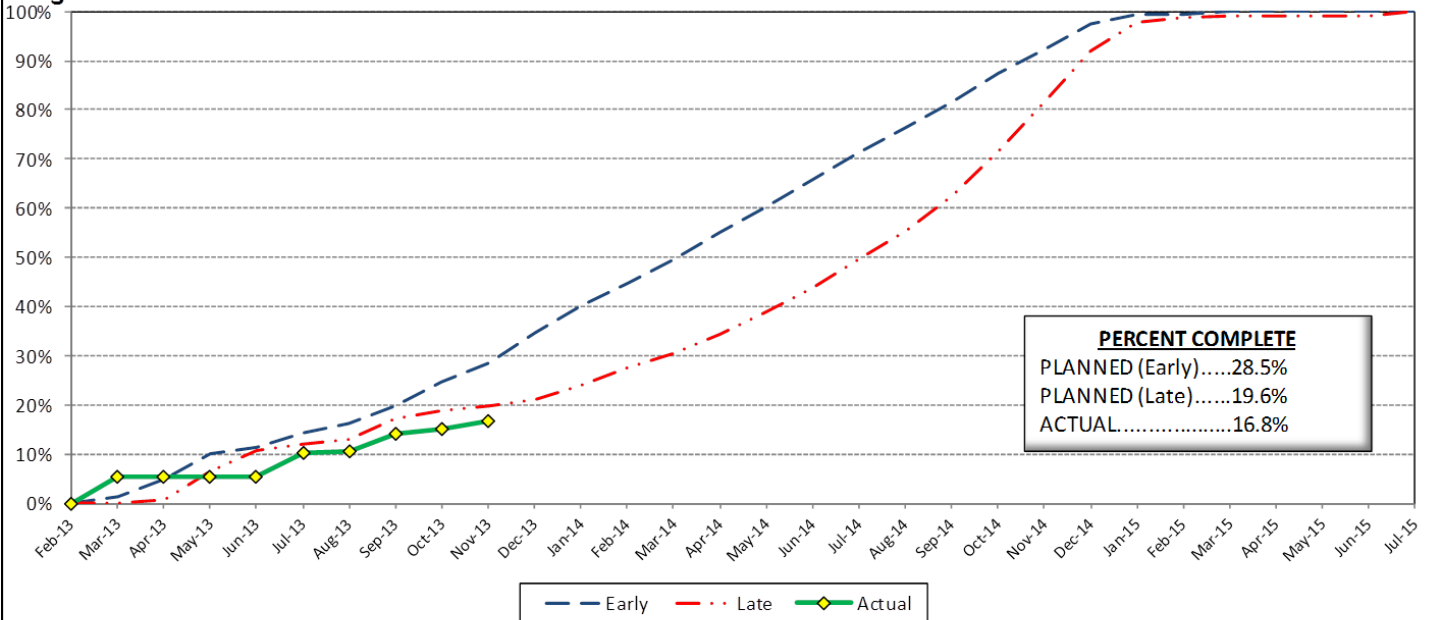
	Million(s)
<b>CONTRACT</b>	
Contract Award Value:	48.8
Executed Change Orders:	0.1
Current Contract Value:	48.9
Potential Change Orders:	0.2
Current Forecast:	49.1
Earned Value/Actual Cost	6.8
<b>AUTHORIZATION FOR EXPENDITURE</b>	
Budget	50.3
Commitment	50.3
Balance	1.2

**Cost Assessment:**

The current cost forecast is 49.1 Million. The forecast increased \$95,000 from the last period. The increase is due to PCO 011 - *Soldano TPSS ROW Fence*, and PCO 012 - *Additional Conduit Provisions*. The current forecast is within the authorized budget.

The Design-Build Contractor is trending beyond the late curve, which is due to the late submittal of AFC designs, which include *Irwindale Parking Structure*, *Azusa-Citrus Site Prep*, and *Michillinda TPSS*. In addition, The Design-Build Contractor reported progress is behind due to late delivery of the Schedule of Values for CDRL's, and Azusa-Citrus Parking Facility Construction.

**Progress Curve**



**Schedule Summary:**

Contract Award:	02/27/13
Interim Notice to Proceed (INTP) :	03/20/13
Original Contract Duration:	845 Calendar Days
Current Contract Duration:	845 Calendar Days
Elapsed Time from NTP:	270 Calendar Days

**Contract Milestones**

Milestones	Description	Original Contract	Current Contract	Forecast	Variance
1	Substantial Completion	03/15/15	03/15/15	04/04/15	(20)
2	Punchlist Complete	05/29/15	05/29/15	06/18/15	(20)
3	Final Completion	07/13/15	07/13/15	08/02/15	(20)
4	TPSS Work	03/01/14	03/01/14	03/19/14	(18)

**Schedule Assessment:**

The critical path continues through the installation of the traffic signal and street restoration. Upon completion of the traffic signal, the critical path continues through the Irwindale Parking Structure construction. This period the critical path slip is due to the late delivery of the *Irwindale Site Prep* design package. The Design-Build Contractor will look into potential opportunities to mitigate the potential delay.

The TPSS Deadline critical path has also slipped this period. The Michillinda Off-Site package was approved and construction commenced this period. The Design-Build Contractor is preparing to mitigate the potential delay due to design by accelerating the off site construction work.



**Description:** Intermodal Parking Facilities & Enhancements **Status:** December 15, 2013  
**Contract No.:** C1150 **Contractor:** Webcor Builders

**Progress Completed This Period**  
**Design**

- Michillinda - Traction Power Substation Off-Site - AFC
- Irwindale - Site Prep - 100%
- Irwindale - Pre-Construction Survey
- Arcadia - Geo Pier - Construction Work Plan
- Arcadia - Foundation/Slab on Grade - Construction Work Plan
- Monrovia - Foundation/Slab on Grade - Construction Work Plan
- Irwindale - Intersection Improvement - Construction Work Plan
- Irwindale - Foundation/Slab on Grade - Construction Work Plan
- Citrus - Foundation/Slab on Grade - Construction Work Plan
- Communications Plan
- Schedule of Values - Arcadia
- Schedule of Values - Monrovia
- Schedule of Values - Irwindale

**Activities Planned Next Period**  
**Design**

- Submit AFC Design - Arcadia Parking Structure
- Submit AFC Design - Monrovia Parking Structure
- Submit QA/QC Plan - Part 2
- Submit QA/QC Plan - Part 3
- Submit AFC Design - Azusa-Citrus Parking Structure
- Submit AFC Design - Azusa-Citrus Site Prep
- Submit AFC Design - Azusa-Citrus Enhancements
- Submit Irwindale - Enhancements - 100%
- Submit Irwindale - Parking Structure - 100%

**Areas of Concern**

- 

**Areas of Concern (Continued)**

-



Change Management Log

Date: 1/15/2014

Page: 1 of 1

Project: C1150 Parking - Webcor Contract #: C1150

Original Contract Amount:	\$48,750,000				
Approved Change Orders:	\$276,521	0.57%	Pending Change Orders:	\$0	0.00%
Current Contract Total:	\$49,026,521		Pending Contract Total:	\$49,026,521	0.57%

Change Orders

Number	Change Management	Title	Initiated Date	Approved Date	Outstanding Days	Time Extension	Amount
<b>EXECUTED Change Orders</b>							
001.00	001.00	Monrovia Parking Alternative Layout	6/25/2013	7/11/2013	16		\$21,382
001.01	001.01	Monrovia Alternative - Cancelation	9/17/2013	10/7/2013	20		(\$12,006)
002.00	003.00	Clock Tower Procurement	7/3/2013	7/11/2013	8		\$107,246
003.00	002.00	Relocate Elevator @ Azusa-Citrus PF	12/18/2013	1/8/2014	21		\$159,899
						<b>Subtotal:</b>	\$276,521
						<b>Subtotal:</b>	\$276,521
						<b>Total:</b>	\$276,521

Open PCOs

PCO Number	Title
<b>OPEN</b>	
004.00	TPSS Grounding Grid Modifications
006.00	St. Joseph Drainage Enhancements
007.00	St. Joseph TPSS Wall
008.00	Azusa-Citrus Plaza Pavers
009.01	Irwindale Intersection Betterments
010.00	Arcadia Transit Plaza Betterments
011.00	Soldano TPSS Added ROW Fence
012.00	Additional Conduit Provisions

Open RFC Notices

Number	Title
001.00	Arcadia Unforeseen Items
002.00	Monrovia unforeseen items
003.00	Michillinda unforeseen items



## **AZUSA TO MONTCLAIR SEGMENT**

### **ACTIVITIES COMPLETED THIS PERIOD**

Authority Board certified the EIR for the Azusa to Montclair segment on March 6, 2013. Following certification, staff filed the Notice of Determination (NOD) with both counties (Los Angeles and San Bernardino). This filing started a 30-day statute of limitations to court challenges to the approval of the project.

The City of Pomona filed a challenge to the EIR, subsequent to which the Authority and the City of Pomona resolved the environmental challenge and executed a settlement agreement. . Authority staff continued to refine the scope of work for the upcoming Request for Proposals for the advanced conceptual engineering support and NEPA consultant. The RFP is planned to be issued in January 2014.

### **KEY FUTURE ACTIVITIES**

Authority staff continues work on finalizing the RFP for the advanced engineering support and NEPA consultant to issue in January 2014 .

### **Federal Transit Administration (FTA)**

The Metro Board of Directors excluded the Gold Line from seeking federal New Starts funding. The Authority will work together with Metro along with the Congressional delegation to seek funding to construct the extension following completion of the environmental review.



## **ONTARIO AIRPORT SEGMENT**

### **ACTIVITIES COMPLETED THIS PERIOD**

Staff continued to pursue the needed funding to conduct the Alternatives Analysis for the Ontario Airport Segment. The Authority is in discussions with the San Bernardino Associated Governments (SANBAG) and other agencies to develop a funding agreement for a portion of the initial Alternatives Analysis study. The Authority has decided to fund the Alternatives Analysis in the meantime, and plans on releasing the Request for Proposals for this segment in March 2014.

### **KEY FUTURE ACTIVITIES**

Authority staff will continue to work with SANBAG and Cities to obtain funding for this Segment.



**PHASE II FOOTHILL EXTENSION FINANCIAL STATUS**  
**Project Operating Budget Summary in Millions of Dollars**  
**December 31, 2013**

	( a )	( b )	(c=a-b)	( d )
<b>FINANCIAL PLAN</b>	<b>Current Budget</b>	<b>Funding Committed to Project</b>	<b>Uncommitted Funds</b>	<b>Revenues Received</b>
SCAG	1.0	0.9	0.1	0.9
Interest Income	2.0	2.0	-	2.0
Bridge Replacement	13.9	13.9	-	13.9
Phase I Carryover	4.0	4.0	-	4.0
Maintenance and Operations Facility	-	-	-	-
Cities	11.0	-	11.0	-
Measure R - Pasadena to Azusa	810.5	777.0	33.5	289.1
Measure R - Azusa to Montclair	-	-	-	-
SANBAG	55.2	1.5	53.7	1.5
Federal TCSP	2.9	2.9	-	2.4
Federal Bus Intermodal Plan	9.0	9.0	-	2.6
Federal New Starts 2004 MTA Passthrough	4.0	4.0	-	4.0
Federal New Starts 2005 MTA Passthrough	0.5	0.5	-	0.5
Federal New Starts 2006 Corridor Study	2.5	2.5	-	2.3
Federal/Other	802.5	-	802.5	-
<b>Total Revenues</b>	<b>1,719.0</b>	<b>818.2</b>	<b>900.8</b>	<b>323.2</b>

	( a )	( b )	( c )	(d=a-b)
	<b>Current Budget</b>	<b>Current Obligation</b>	<b>Current Expenditures</b>	<b>Current Available Balance</b>
<b>EXPENSES</b>				
Program Management and Administration	107.9	86.1	71.2	21.8
Master Cooperative Agreements	12.0	3.3	2.7	8.7
Real Estate including ROW Acq	21.0	14.0	14.0	7.0
Special Programs	0.3	-	-	0.3
Procurement/Vehicles	60.0	-	-	60.0
Maintenance and Operations Facility Land	22.0	22.0	22.0	-
Construction - IFS	19.8	19.8	19.8	-
Construction - Pasadena to Azusa segment	328.9	320.4	175.4	8.5
Construction - Azusa to Montclair segment	950.0	-	-	950.0
Construction - M&O	46.0	44.0	15.6	2.0
Construction - Parking Structures	44.2	44.2	8.2	-
MTA Project Costs	64.0	64.0	14.3	-
Contingency	27.4	-	-	27.4
Project Reserve	15.5	-	-	15.5
<b>Total Project</b>	<b>1,719.0</b>	<b>617.8</b>	<b>343.2</b>	<b>1,101.2</b>