

# Next stop: improving rail service.

## DIVISION 20 PORTAL WIDENING AND TURNBACK FACILITY



**Metro**

**Construction Update**

Division 20

September 16, 2021

We will begin soon



This conversation will be recorded and shared afterwards online and via email



You can submit your questions using the Q&A feature.



The chat feature is to communicate only with the panel.

# Meet the Team

## Metro Staff

- **Marlon Walker**, Metro Manager
- **Ned Racine**, Principal Community Relations Officer
- **Katrice Candler**, New Media Officer
- **Wendy Cardona**, New Media Officer

## Contractor

- **Joanna Amador-Dempsey**, Construction Communications Coordinator

# Next stop: improving rail service.

## DIVISION 20 PORTAL WIDENING AND TURNBACK FACILITY



**Metro**

**Construction Update**

Division 20

September 16, 2021

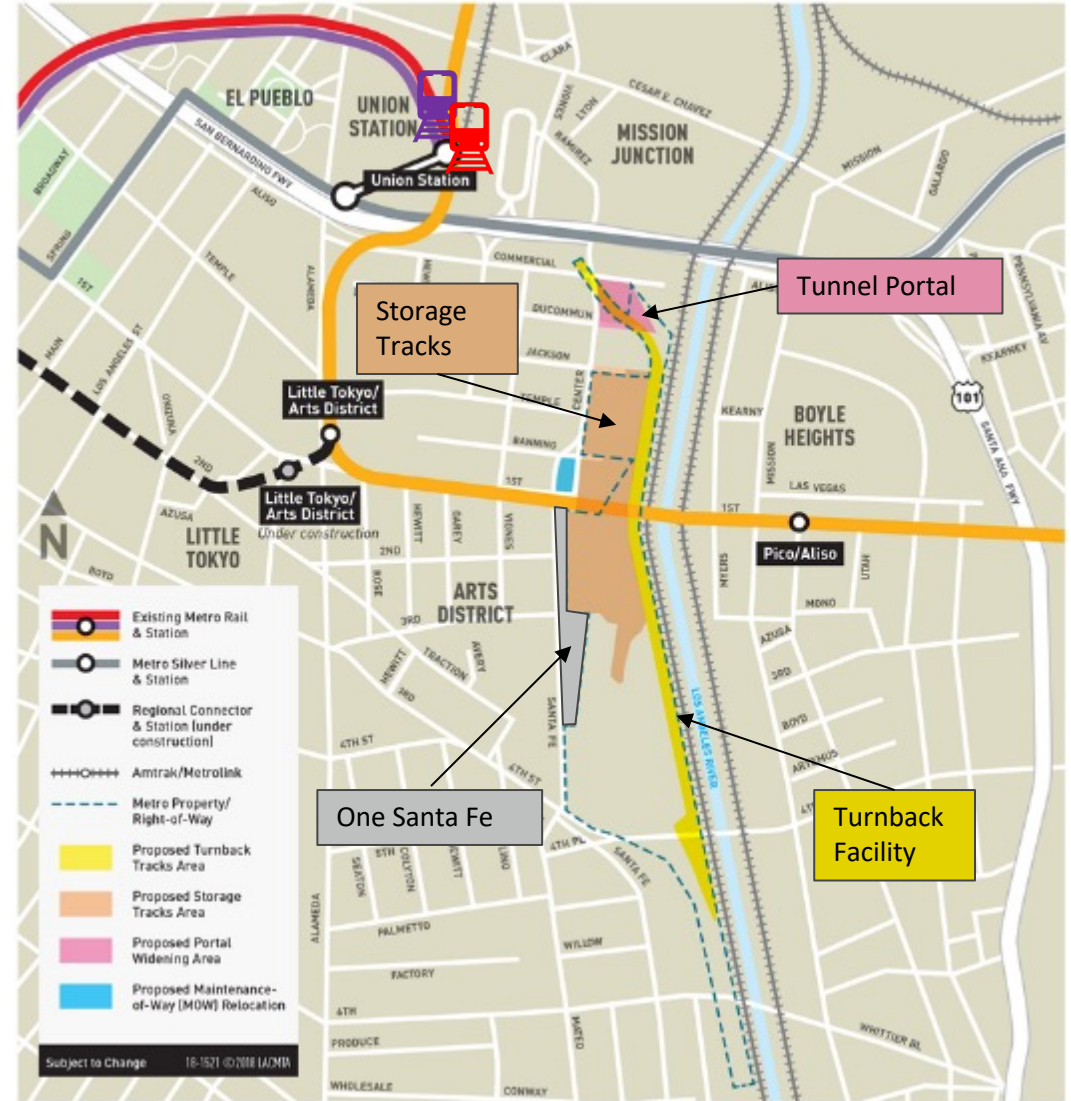
# Welcome and Agenda

## Thank you for joining us!

- > Project overview, timeline and schedule
- > Construction look ahead
- > Construction mitigations
- > Center Street mitigations
- > How to reach us

# Project Overview

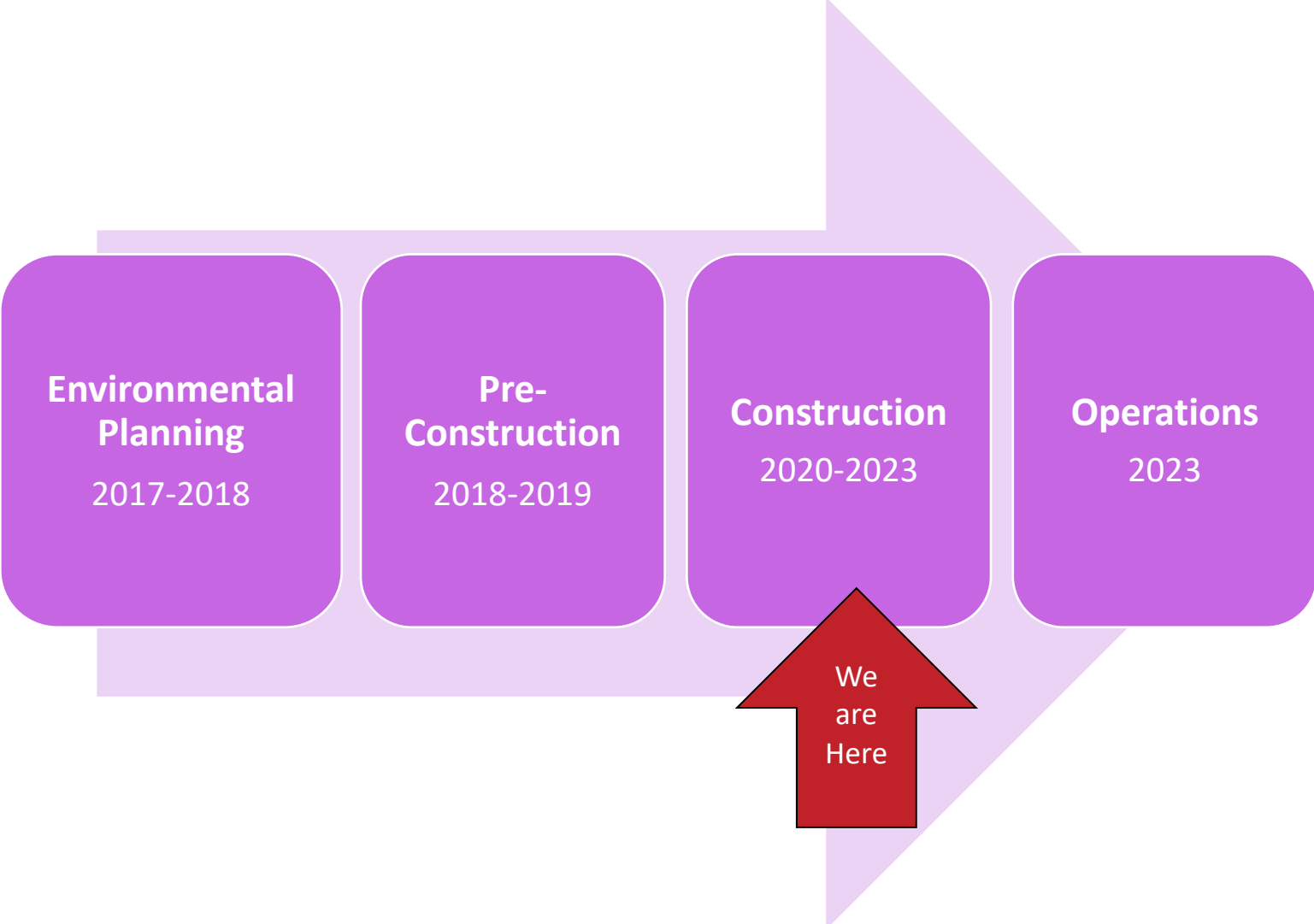
- Operational improvements to Metro's Division 20 Rail Yard will accommodate increased service levels on the Metro Red and Purple (B and D) Lines
- Improvements include:
  - Widening of heavy rail portal
  - New turnback facility
  - Expansion and reconfiguration of rail storage tracks
- Benefits
  - Faster and more frequent service



Exact location of turnback tracks and storage tracks to be determined.



# Project Timeline



# Recent Schedule

*\*Schedule is subject to change*

ACTIVITY	SEP	OCT	NOV	DEC	JAN	FEB
Portal Widening – Excavations & Begin Utility Relocations	→					
North Storage Yard – Utility Ductbanks and Concrete Retaining Walls	→					
1st Street Bridge Modifications – Crack & Spall Repairs and Seismic Retrofits	→					
TPSS Area – Vault/Ductbank Construction and Backfilling	→					
South Storage Yard – WPLE1 Rail Welding Storage and Transportation to Portal	→					
Road A – Utility Ductbanks and Backfill	→					

# Current Work (Continued)

## Portal Widening

The work supports two storm drains running underneath the portal being widened for future track installation.

- Completed stage 1 support for on Ducommun St. storm pipes
- Constructing a reinforced concrete protection slab on top of storm drain pipes.
- Dewatering on both sides of the existing portal.
- Completed jack and bore work for the fire water lines under tracks.



Micropile drilling for storm drain support and protection.



Jacking and boring for fire water lines underneath tracks.



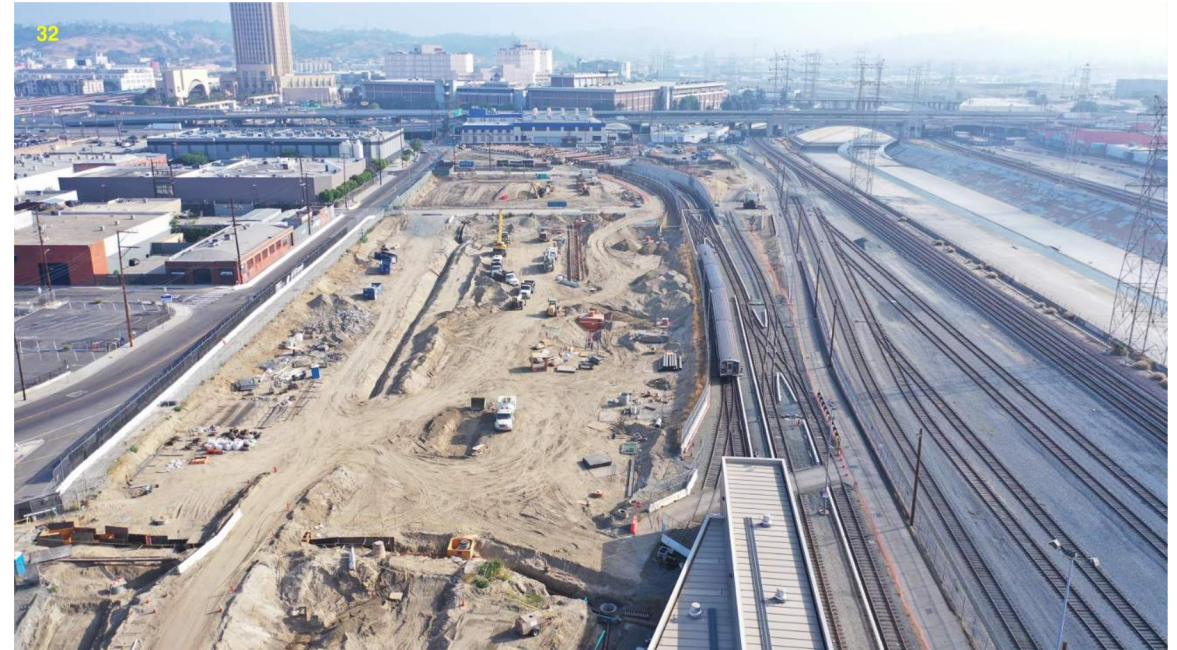
East wall for widened portal.

# Current Work

## North Storage Yard

The utility work supports installation of the additional tracks for more rail car storage. Most utilities are new, while others are being relocated throughout the site.

- Installing a domestic water line under Banning St.
- Installing fire water lines.
- Installing lighting ductbanks.
- Installing main storm drain pipes.
- Adding retaining walls along Center St. from 1st St. to Jackson St.
- Constructing a retaining wall in the middle of the North Yard.



Current Aerial View of the North Yard work

# Current Work (Continued)

## 1st Street Bridge Modifications

These modifications provide more structural support for the bridge, allowing bents to be removed, which enables more tracks to be placed under the bridge.

- Completed bracing between bent 12 and 13.
- Started construction of footing and wall additions.
- Continuing crack and spall repairs along the bridge's underside (the soffit).
- Started constructing edge girders for additional support.



Bracing the bridge in preparation of footing and wall additions at bent 12.



# Current Work (Continued)

## Traction Power Substation (TPSS) Area

- Continuing ductbank installation carry power to the tracks.



Looking south at the new TPSS where conduits and manholes have been installed.



Ongoing excavation for ductbank installation for the new TPSS.



Installing a shoring box for ductbank excavation and protection.

# Current Work (Continued)

## South Storage Yard

The utility work here allows more tracks to be installed and more subway rail cars to be stored.



Completed ductbanks being covered with soil.



This formwork will allow the completed lighting ductbanks to be encased in with concrete.

# Current Work (Continued)

## Road A Area

Improvements are being made to Road A to support relocation of the main line tracks between 4th St. and 1st St.

- Installing storm drain pipes.
- Installing a fire water line.
- Installing lighting ductbanks.
- Demolishing tracks.



Installing lighting ductbank at Road A area.

# Current Work (Continued)

## Preparing to Install Rail in Purple Line Tunnels



The track blocks seen here will be positioned every two feet to support permanent rail in the new Purple Line tunnels. The blocks will be placed in concrete to prevent their movement. Two thousand track blocks have been delivered to the Division 20 Rail Yard so far.

# Upcoming Work

*\*Work is subject to change*

- Continue ductbank installation.
- Continue retaining walls along Center St.
- Construct Center St. east side sidewalk.
- Continue 1st Street Bridge improvements, including work east of Los Angeles River.
- Continue to install new underground fire water and storm drain lines.
- Construct portal foundation and walls.



*Exact location of turnback tracks and storage tracks to be determined.*

# Construction Mitigations

## > Best practices on the construction site:

- Equipment and staging areas shall be located away from noise-sensitive receivers, and noise barriers should be used when possible
- Minimize high-impact devices such as jackhammers and hoe rams
- Utilize lower impact devices such as concrete crushers and pavement saws
- Refrain from idling of equipment
- Use frequent watering to reduce dust



Watering trucks control dust.

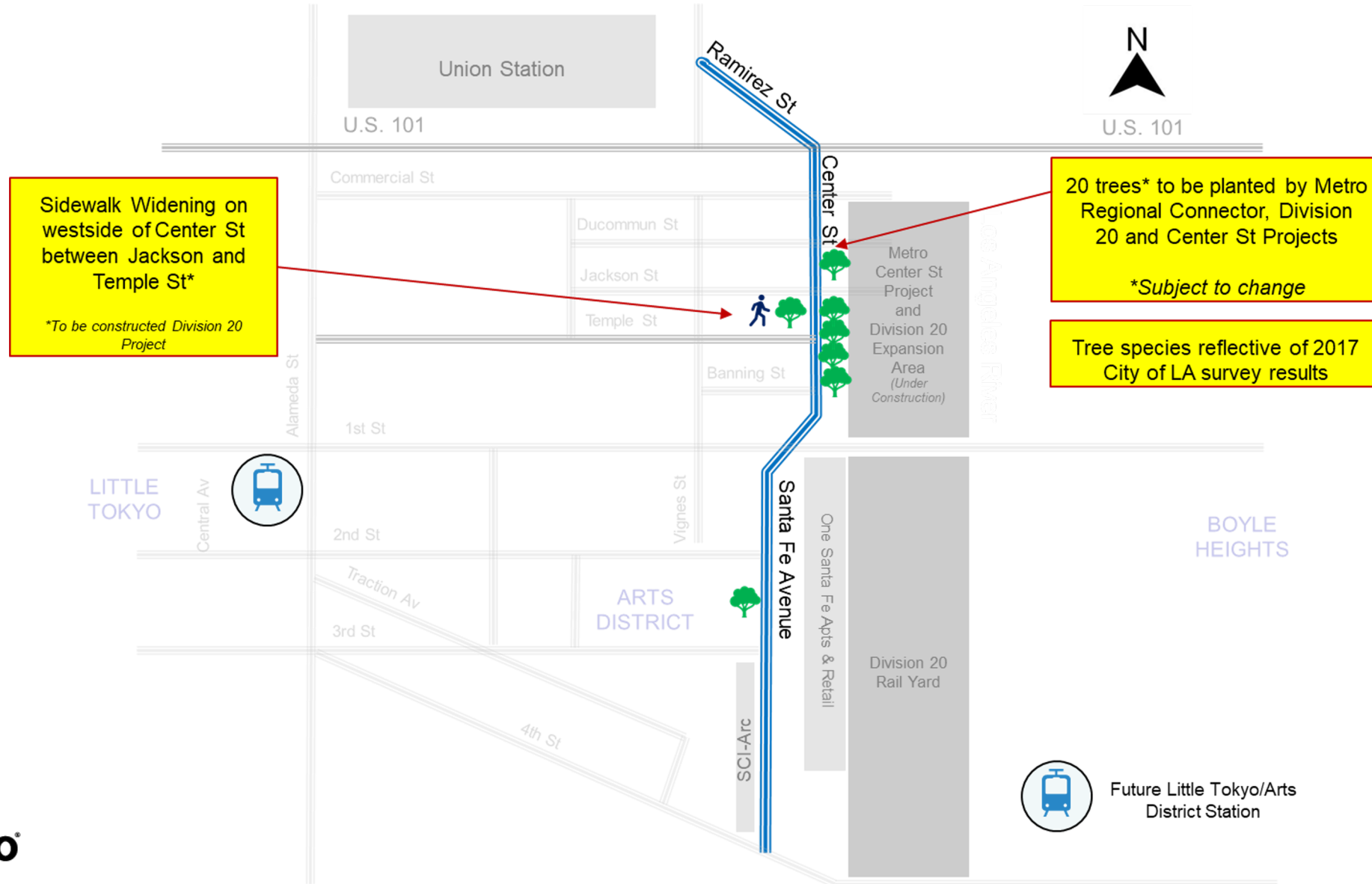


Sound monitoring equipment.

# End-of-Project Mitigations

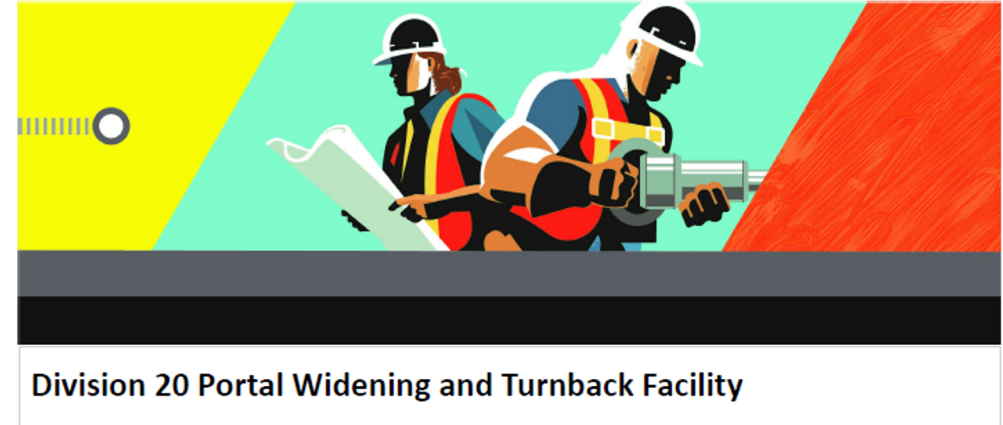
- > On the east side of Center Street from Jackson Street to Banning Street, the Portal Widening Project will provide:
  - Street lighting
  - Pedestrian lighting
  - Tree wells
  - Vines
  - The Arts District reviewed these streetscape elements
- > The Portal Widening Project will provide a 10-foot-wide sidewalk on the west side of Center St from East Temple St to Jackson St and will provide an 8-foot-wide sidewalk on the east side from Jackson St to Banning St

# End-of-Project Mitigations (Continued)



# Stakeholder Outreach

- The project holds bimonthly virtual construction update meetings with stakeholders
- Meeting invitations are sent to stakeholders via our eblast list
- One Santa Fe management sends invitations to its residents and shops via email and its building newsletter
- Weekly eblasts of construction updates are sent to more than 40 subscribers (including One Santa Fe, SCI-Arc, and the Arts District BID)
- Construction Notices are sent to a list of 600 subscribers



## Construction Look Ahead: Week of Saturday, January 9 through Friday, January 15

Metro thanks One Santa Fe residents for their continued patience as construction continues. Below is a summary of anticipated construction activities for the week ahead in the Division 20 Rail Yard.

### Construction Weekend Work (Saturday, January 9)

- Construction crews will not be working this Saturday, January 9.
- A Metro contractor will continue to work underneath the 1st Street Bridge and continue work on underground utilities in the rail yard.

### Utility Work (Monday through Friday)

- Excavation activities to support duct bank installation work will continue throughout the Division 20 Rail Yard.
- Sound blankets are currently being implemented around our utility road area to minimize noise impacts for this activity.

# How to Reach Us

## > **Call us on the Project Hotline: 213-922-6934**

- For project questions, concerns and complaints
- Live during construction work hours
  - Monday through Friday, 7am to 5pm
- After 5pm: Leave a voicemail; staff with return call within 24 hours
- Callers can speak with a person via the Hotline after 5pm by pressing 1

## > **Project Email: [div20portalwidening@metro.net](mailto:div20portalwidening@metro.net)**

- Staff will reply within 24 hours

## > **Stay Connected**

- Construction notices posted online at [metro.net/division20](https://metro.net/division20)
- Receive email project updates and construction notices

# Central LA Region - Community Relations Team

Centralized  
communications  
approach with the  
community and projects

Core community  
relations team

Assist with construction  
related comments and  
concerns

Serve as a conduit of  
community priorities  
within Metro

Five Projects:

Div. 20 | EAIP | Link US | Metro Center Project |  
Regional Connector

# Central LA Region – Community Relations Team

Jeanmarie Hance, Manager

Regional Connector	}	Jeanmarie Hance
EAIP		Katrice Candler, PCRO/NMO

Olga Arroyo, Manager

Regional Connector	}	JC Montenegro, PCRO
		Wendy Cardona, CRO/NMO
Metro Center Project	}	Katrice Candler
Division 20	}	Ned Racine, PCRO
Link US	}	Olga Arroyo

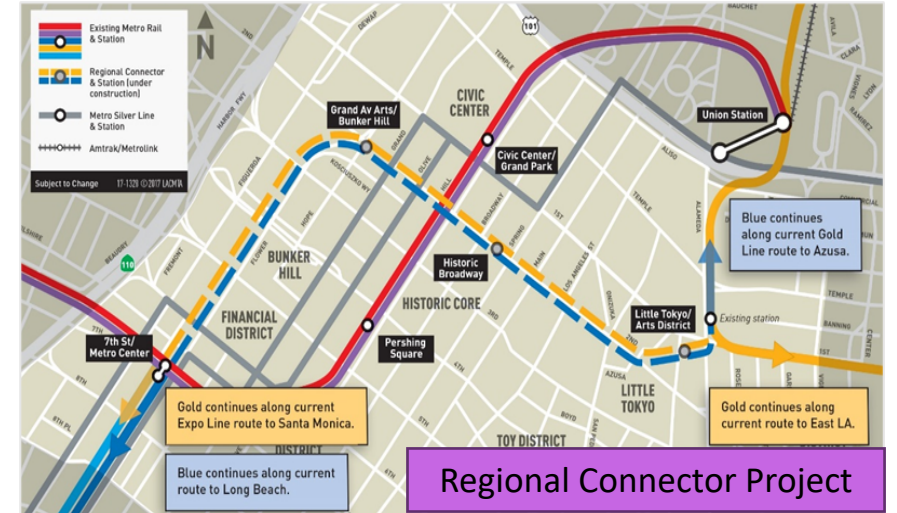


# Central LA Region Town Hall

Learn more on the status of the Central LA Projects and meet the teams!

- Wednesday, September 22, 2021
- 12:00 p.m. - 1:30 p.m.
- Zoom: <https://zoom.us/j/4329547902>

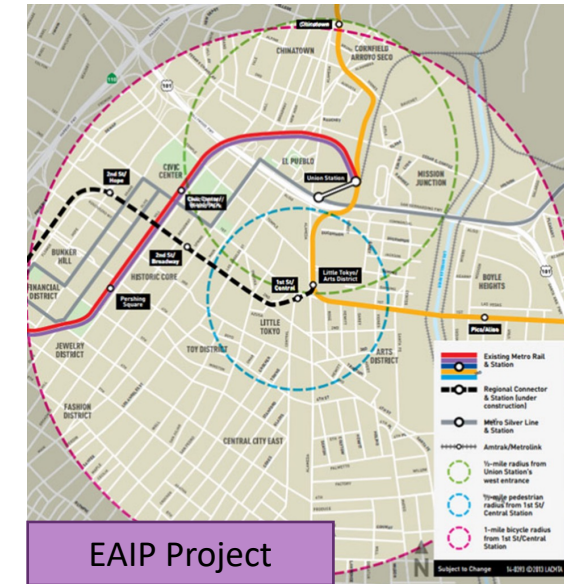
Division 20 Portal Widening & Turnback Facility



Regional Connector Project



Center St Project



EAIP Project

# How to Reach Us

## > **Call us on the Project Hotline: 213-922-6934**

- For project questions, concerns and complaints
- Live during construction work hours
  - Monday through Friday, 7am to 5pm
- After 5pm: Leave a voicemail; staff with return call within 24 hours
- Callers can speak with a person via the Hotline after 5pm by pressing 1

## > **Project Email: [div20portalwidening@metro.net](mailto:div20portalwidening@metro.net)**

- Staff will reply within 24 hours

## > **Stay Connected**

- Construction notices posted online at [metro.net/division20](https://metro.net/division20)
- Receive email project updates and construction notices