

Appendix B
Visual Depictions of Street Reconfigurations

Figure B1

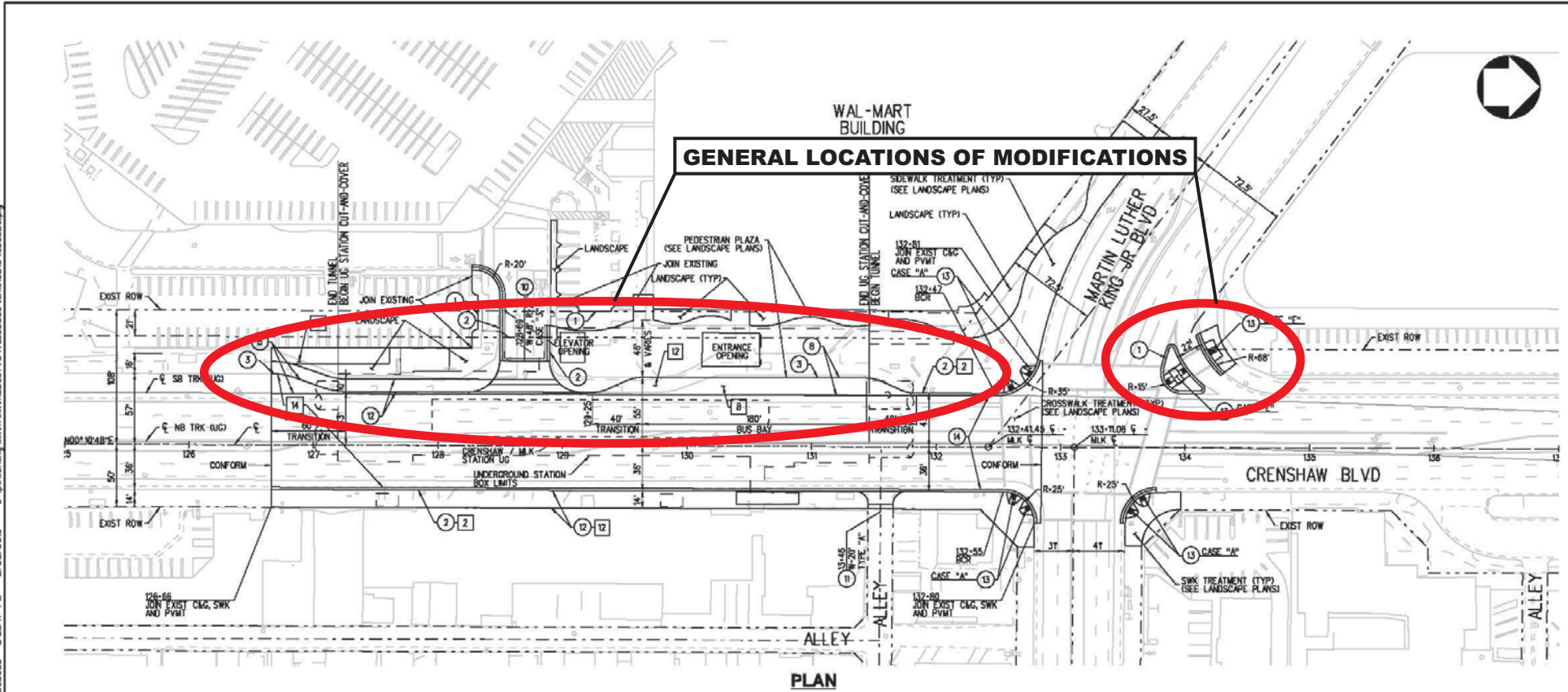
Location of Roadway Modifications



Figure	Location	Description of Modification
B2	Crenshaw Boulevard at Exposition Boulevard	A bus bay added to the west side of Crenshaw Boulevard (southbound direction) to service the Crenshaw/Exposition Station. The bus bay will encroach onto existing landscape.
B3	Crenshaw Boulevard at Martin Luther King Jr. Boulevard	To accommodate the Crenshaw/MLK Station entrance on the west side of Crenshaw Boulevard, the existing bus bay will be shifted southward to continue to function as in the current condition. Sidewalk modifications at the northwest corner of Martin Luther King Jr. Boulevard and Crenshaw Boulevard are needed to accommodate the station entrance on the west side. The modifications are upgrades to existing curb ramps for City of Los Angeles and Americans with Disabilities Act (ADA) compliance.
B4	Crenshaw Boulevard at 48 th Street	The street running segment along Crenshaw Boulevard requires modification to the current cross slope of the roadway. At the location shown the new Crenshaw Boulevard roadway section will need to be re-graded to match new east side sidewalk. This grading will need to continue onto some private properties.
B5	Crenshaw Boulevard at Slauson Avenue	Driveways on the east and west sides of Crenshaw Boulevard (between 59 th Street and Slauson Avenue) will need to be modified to match the reconstructed sidewalk. In addition, the City of Los Angeles requested that a right turn lane be added to the northbound direction of Crenshaw Boulevard for east movements onto Slauson Avenue. The sidewalks will meet the minimum requirement of ten feet.
B6	Crenshaw Boulevard at 67 th Street	A portion of Metro right-of-way will be dedicated to the City of Los Angeles with a new two-way road. The addition of this road will allow for movements between Victoria Avenue and Crenshaw Boulevard.
B7	Harbor Subdivision at West Boulevard and Brynhurst Avenue	Development of the crossing gates at-grade crossings per California Public Utility Commission (CPUC) require sidewalk modifications to properly taper the sidewalks. As a result, minimal partial property acquisitions would occur. Once completed, the sidewalks will be dedicated to the respective city (City of Los Angeles or City of Inglewood).
B8	Florence Avenue at Locust Street	A bus-bay was added to the north side of Florence Avenue (east direction) to service the Florence/La Brea Station. The access to this property will be from Locust Street only.
B9	Florence Avenue at Fir Avenue	The currently layout of the northwest corner of Florence Avenue and Ivy Ave will not allow for curb ramps to be properly installed, therefore additional right-of-way is required.
B10	Florence Avenue at Eucalyptus Avenue	Development of the gate crossing for at-grade crossings per CPUC require sidewalk modifications needed to properly taper the sidewalks. The sidewalk will be dedicated to the City of Inglewood.
B11	Harbor Subdivision at Arbor Vitae Street	Development of the crossing gates for at-grade crossings per CPUC require sidewalk modifications needed to properly taper the sidewalks. The sidewalk will be dedicated to the City of Inglewood. The CPUC also requires a certain distance from the vehicular crossing gates to a driveway. The current driveway is too close to the gates, and has to be relocated further east.

Figure B3
Crenshaw Boulevard at Martin Luther King Jr Boulevard

Plot Driver: pdf_11x17_rev1.dwg
 USER: VAS5585 2/28/2012 2:28:17 PM
 c:\pwworking\hmm\hmm_263779\vas5585\dms103131\CL0526.dwg
 Pentable: WTA.TBL



PLAN

- NOTES:**
1. FOR COMPLETE LIST OF CONSTRUCTION NOTES SEE DWG C-518.
 2. PAVING LIMITS AS SHOWN ARE INDICATIVE AND ARE SUBJECT TO COORDINATIONS BY THE DESIGN-BUILDER WITH RELEVANT CITY AGENCIES.

THE PREPARATION OF THIS DRAWING HAS BEEN FINANCED IN PART THROUGH A GRANT FROM THE U.S. DEPARTMENT OF TRANSPORTATION, FEDERAL TRANSIT ADMINISTRATION (FTA) UNDER THE TERMS OF THE INTERIM OF LOS ANGELES COUNTY AND OF THE STATE OF CALIFORNIA.

REV	DATE	BY	APP	REC NO	EXPRES	SEAL HOLDER	DESCRIPTION

DESIGNED BY
A. VIVAR
DRAWN BY
C. SERRANO
CHECKED BY
J. LEVY
IN CHARGE
G. HEAD
DATE
FEBRUARY 29, 2012

FOR REVIEW ONLY NOT FOR CONSTRUCTION

Metro LOS ANGELES COUNTY METROPOLITAN TRANSPORTATION AUTHORITY

Hatch Mott MacDonald 201 N. Century Blvd, Suite 200, Los Angeles, CA 90045, Phone: 310-557-0090, Fax: 310-557-0942

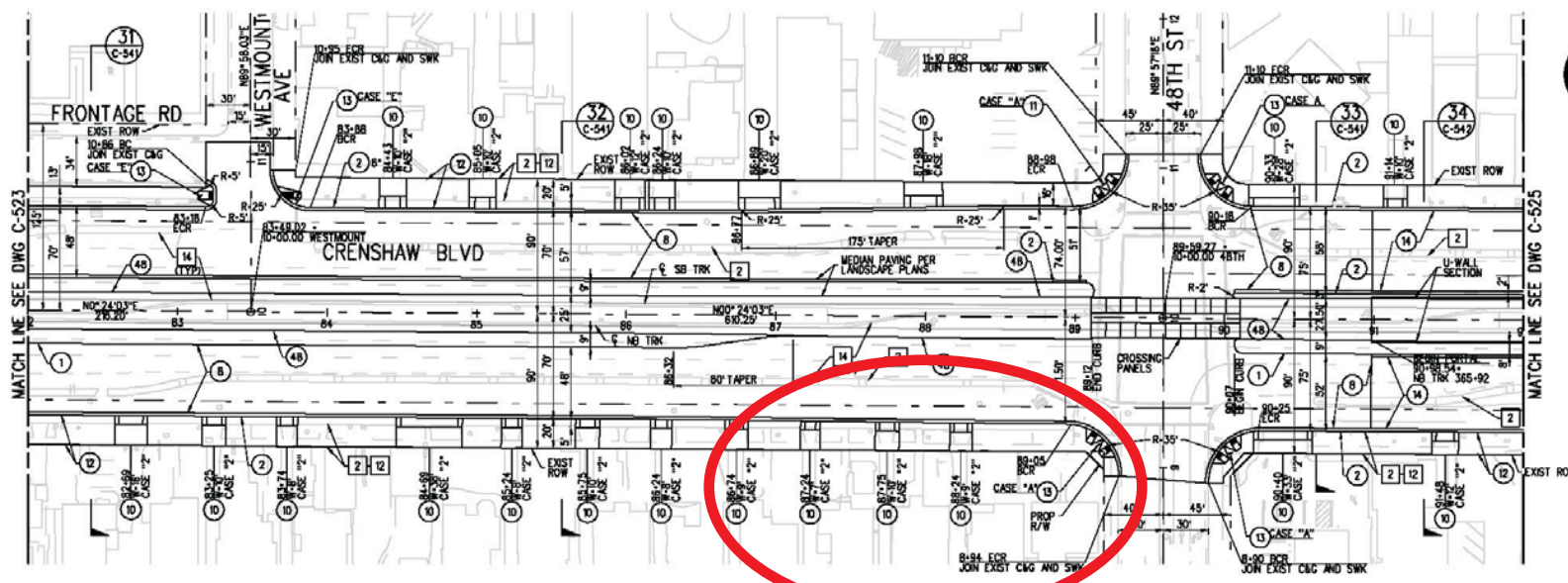
IBI GROUP

CRENSHAW/LAX TRANSIT CORRIDOR PROJECT

STREET MODIFICATION PLAN
CRENSHAW BLVD
SHEET 8 OF 9

CONTRACT NO	E-0117
DRAWING NO	C-526
SCALE	1" = 40'
SHEET NO	

Figure B4
Crenshaw Boulevard at 48th Street



GENERAL LOCATION OF MODIFICATIONS

PLAN

- NOTES:**
1. FOR COMPLETE LIST OF CONSTRUCTION NOTES SEE DWG C-518.
 2. MODIFICATIONS TO THE STREET DESIGN ALONG THE CRENSHAW BLVD AT-GRADE SEGMENT, SHOWN IN DWG C-519 TO C-523, SHALL BE NECESSARY DUE TO LOAD AND CPUC REQUIREMENTS. SEE TYPICAL SECTIONS AND CONTRACT DOCUMENTS TO VERIFY THE MODIFICATIONS.
 3. PAVING LIMITS AS SHOWN ARE INDICATIVE AND ARE SUBJECT TO COORDINATIONS BY THE DESIGN-BUILDER WITH RELEVANT CITY AGENCIES.

Plot Driver=pdf_11117_rev1.plt
 PenTable=MTA.TBL
 3/12/2012 3:45:55 PM
 C:\pwworking\lamm\lamm_283778\corbis.serrano\bigcup.com\dms1031\DL\CS24.gxd

THE PREPARATION OF THIS DRAWING HAS BEEN FINANCED IN PART THROUGH A GRANT FROM THE U.S. DEPARTMENT OF TRANSPORTATION FEDERAL TRANSIT ADMINISTRATION STIA UNDER THE FEDERAL TRANSIT ACT OF 1996, AS AMENDED AND IN PART BY THE TAXES OF THE CITIZENS OF LOS ANGELES COUNTY AND OF THE STATE OF CALIFORNIA.

REV	DATE	BY	APP	REG NO	EXPRES	SEAL HOLDER	DESCRIPTION

DESIGNED BY
A. VIVAR
DRAWN BY
C. SERRANO
CHECKED BY
J. LEVY
IN CHARGE
G. HEAD
DATE
FEBRUARY 29, 2012

FOR REVIEW
ONLY NOT FOR
CONSTRUCTION

M Metro LOS ANGELES COUNTY METROPOLITAN TRANSPORTATION AUTHORITY

Hatch Mott MacDonald 620 E Century Blvd, Suite 800, Los Angeles, CA 90048, Phone: 213-237-0200, Fax: 213-237-0202

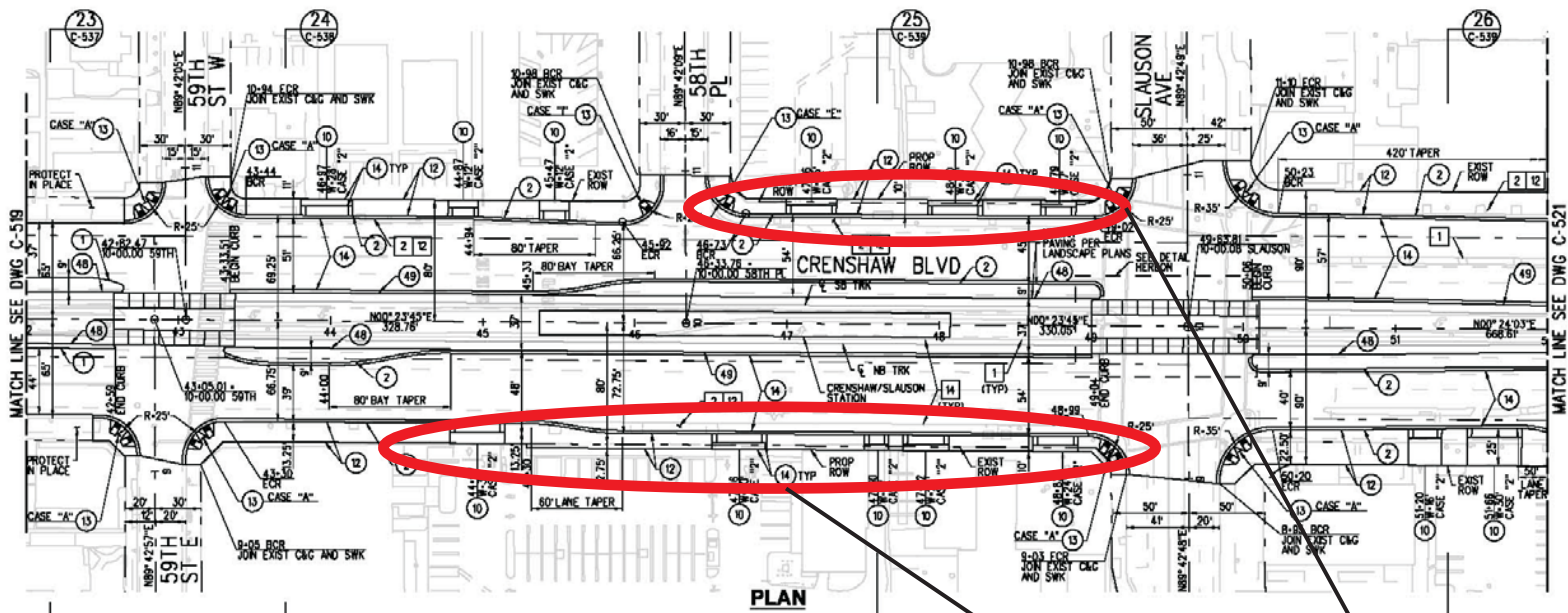
IBI GROUP

CRENSHAW/LAX TRANSIT CORRIDOR PROJECT

STREET MODIFICATION PLAN
CRENSHAW BLVD
SHEET 6 OF 9

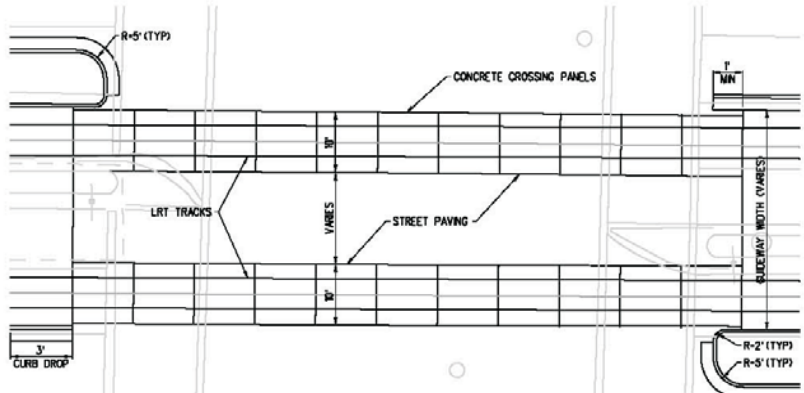
CONTRACT NO	E-0117
DRAWING NO	C-524
SCALE	1" = 40'
REV	0
SHEET NO	

Figure B5
Crenshaw Boulevard at Slauson Avenue



PLAN

GENERAL LOCATIONS OF MODIFICATIONS



LRT AT-GRADE CROSSING DETAIL

SCALE: 1"=10'
* ALL DIMENSIONS TYPICAL UNLESS OTHERWISE SPECIFIED

- NOTES:**
1. FOR COMPLETE LIST OF CONSTRUCTION NOTES SEE DWG C-518.
 2. MODIFICATIONS TO THE STREET DESIGN, ALONG THE CRENSHAW BLVD AT-GRADE SEGMENT, SHOWN IN DWG C-519 TO C-525, SHALL BE NECESSARY DUE TO LADD AND CRIC REQUIREMENTS. SEE TYPICAL SECTIONS AND CONTRACT DOCUMENTS TO VERIFY THE MODIFICATIONS.
 3. PAVING LIMITS AS SHOWN ARE INDICATIVE AND ARE SUBJECT TO COORDINATIONS BY THE DESIGN-BUILDER WITH RELEVANT CITY AGENCIES.

Plot: Drivers.pdf; 11/17; rev1.rvt; Pen: 3/12/2012 3:12:45 PM; USER: carlos.terrante@lta.tel; C:\pwworking\hatchmottmacdonald\lta\carlos.terrante\bigasp.com\dms03\31\010520.rvt

REV	DATE	BY	APP	REV NO	EXPIRES	SCALE	HOLDER	DESCRIPTION

DESIGNED BY
A. VIVAR
DRAWN BY
C. SERRANO
CHECKED BY
J. LEVY
IN CHARGE
G. HEAD
DATE
FEBRUARY 29, 2012

FOR REVIEW
ONLY NOT FOR
CONSTRUCTION



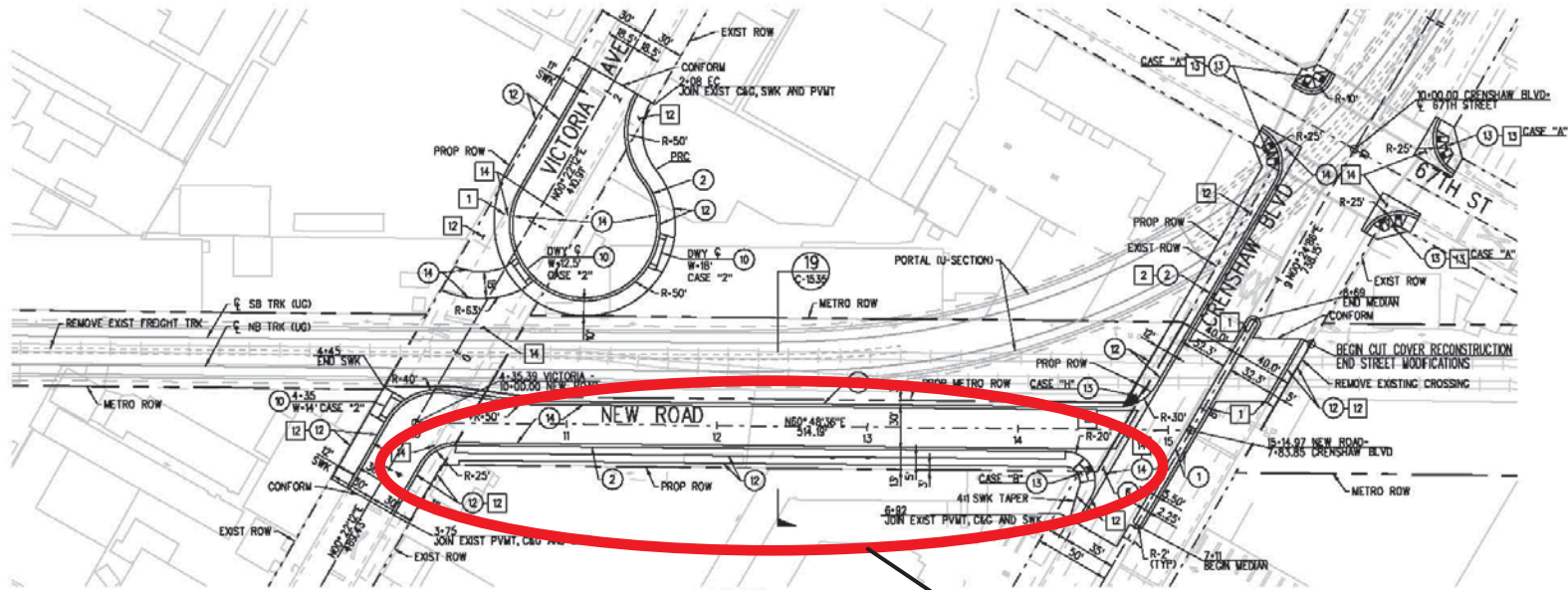
LOS ANGELES COUNTY METROPOLITAN
TRANSPORTATION AUTHORITY

CRENSHAW/LAX
TRANSIT CORRIDOR PROJECT

STREET MODIFICATION PLAN
CRENSHAW BLVD
SHEET 2 OF 9

CONTRACT NO	E-0117
DRAWING NO	C-520
SCALE	1" = 40'
SHEET NO	0

Figure B6
Crenshaw Boulevard at 67th Street



PLAN

GENERAL LOCATION OF MODIFICATIONS

CONSTRUCTION NOTES (CITY OF LOS ANGELES)
CONSTRUCTION SYMBOLS

CONSTRUCT	REMODEL EXISTING
EXISTING	REMOVE AND CONSTRUCT
REMOVE	WORK BY OTHERS

NOTE:
WHEN ONE CHOOSES TO USE CONSTRUCTION SYMBOLS, THE USE OF THIS STANDARD PLAN IS MANDATORY. PERTINENT ITEM NUMBERS AND DESCRIPTIONS SHALL BE SHOWN ON EACH SHEET.

ITEM	DESCRIPTION	DATA TO BE SHOWN ON LEADER
1.	CONCRETE CURB.....	TYPE
2.	TYPE C INTEGRAL CURB AND GUTTER.....	b/a
3.	TYPE C INTEGRAL CURB AND PAVEMENT.....	b/c
4.	CONCRETE GUTTER.....	b/d
5.	CONCRETE LONGITUDINAL GUTTER.....	b/g
6.	CONCRETE INTERSECTION GUTTER.....	b/h,g
7.	BUS PAD.....	w,l,f,l
8.	CONCRETE PAVEMENT.....	THICKNESS, CLASS
9.	STREET OR ALLEY PER TYPICAL SECTION.....	CASE, W,X,Y,m,t
10.	CONCRETE DRIVEWAY.....	W,R,I
11.	CONCRETE ALLEY INTERSECTION.....	THICKNESS
12.	CONCRETE WALK.....	CASE, W,X,Y
13.	CURB RAMP.....	THICKNESS
14.	ASPHALT CONCRETE PAVEMENT.....	THICKNESS, TYPE
15.	ASPHALT CONCRETE BERM PER DETAIL.....	TYPE, *RAISE*, *LOWER*
16.	UNTREATED BASE MATERIAL.....	LIN. FT.
17.	ADJUST MANHOLE TO GRADE.....	
18.	METAL BEAM GUARDRAIL.....	
19.	RECONSTRUCT MANHOLE TO GRADE.....	



NEW ROAD
PROFILE

- NOTES:**
- FOR COMPLETE LIST OF CONSTRUCTION NOTES SEE DWG C-501
 - PAVING LIMITS AS SHOWN ARE INDICATIVE AND ARE SUBJECT TO COORDINATIONS BY THE DESIGN-BUILDER WITH RELEVANT CITY AGENCIES

USER: VSS5585 2/24/2012 2:24:47 PM c:\pwworking\hatchmottmacdonald\2012\79\work\5585\csm\03\CD\CS18.plt
 Pendable-MTA.tbl
 Plot Driver: pdf_11x17_rev.dwt

DESIGNED BY A. VIVAR	CHECKED BY J. LEVY	DATE FEBRUARY 29, 2012
DRAWN BY C. SERRANO	IN CHARGE G. HEAD	

REV	DATE	BY	APP	REQ NO	ENRICH	SEAL HOLDER	DESCRIPTION

FOR REVIEW
ONLY NOT FOR
CONSTRUCTION

M Metro LOS ANGELES COUNTY METROPOLITAN TRANSPORTATION AUTHORITY

Hatch Mott MacDonald 801 N. Century Blvd, Suite 800, Los Angeles, CA 90045, Phone: 310.557.0500 Fax: 310.317.0942

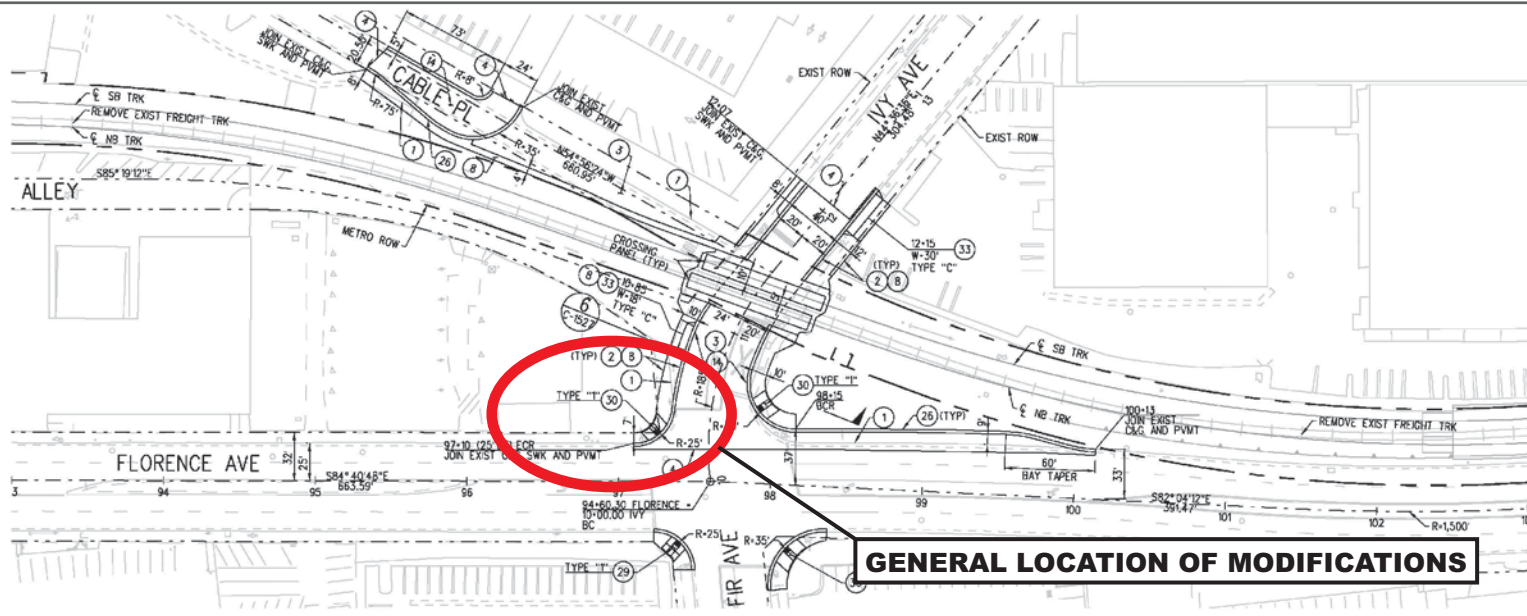
IBI GROUP

CRENSHAW/LAX TRANSIT CORRIDOR PROJECT

STREET MODIFICATION PLAN
VICTORIA AVE

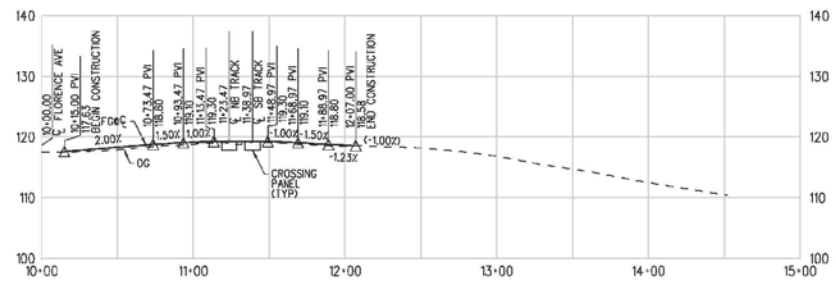
CONTRACT NO	E-0117
DRAWING NO	C-518
REV	0
SCALE	Horiz: 1" = 40' Vert: 1" = 10'
SHEET NO	

Figure B9
 Florence Avenue at Fir Avenue



GENERAL LOCATION OF MODIFICATIONS

PLAN



IVY AVENUE

PROFILE

NOTE:
 FOR COMPLETE LIST OF CONSTRUCTION NOTES
 SEE DWG C-1504

P:\01 Driver\p01_11x17_rev4.plt
 USER-SOL57960 9:46:08 AM 2/28/2012 c:\pwworking\hmm\hmm-263179\sol57960\dms15136.CLC\1511.plt
 PenTable-MTA.TBL

THE PREPARATION OF THIS DRAWING HAS BEEN FINANCED IN PART THROUGH A GRANT FROM THE U.S. DEPARTMENT OF TRANSPORTATION, FEDERAL TRANSIT ADMINISTRATION, FINAL UNDER THE FEDERAL TRANSIT ACT OF 1984, AS AMENDED, AND IN PART BY THE TAXES OF THE CITIZENS OF LOS ANGELES COUNTY AND OF THE STATE OF CALIFORNIA.

REV	DATE	BY	APP	REC NO	EXPIRES	SEAL HOLDER	DESCRIPTION

DESIGNED BY
A. VIVAR
 DRAWN BY
C. SERRANO
 CHECKED BY
J. LEVY
 IN CHARGE
G. HEAD
 DATE
FEBRUARY 29, 2012

FOR REVIEW
 ONLY NOT FOR
 CONSTRUCTION



**LOS ANGELES COUNTY METROPOLITAN
 TRANSPORTATION AUTHORITY**

251 W. Century Blvd.
 Suite 800
 Los Angeles, CA 90045
 Phone: 310-337-6500
 Fax: 310-337-0042



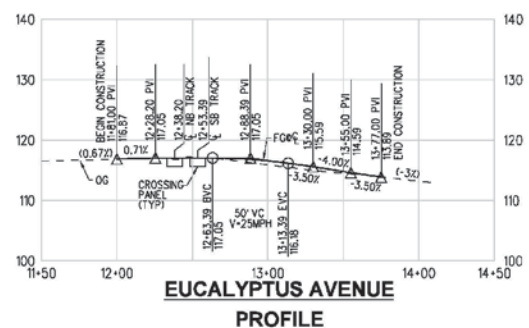
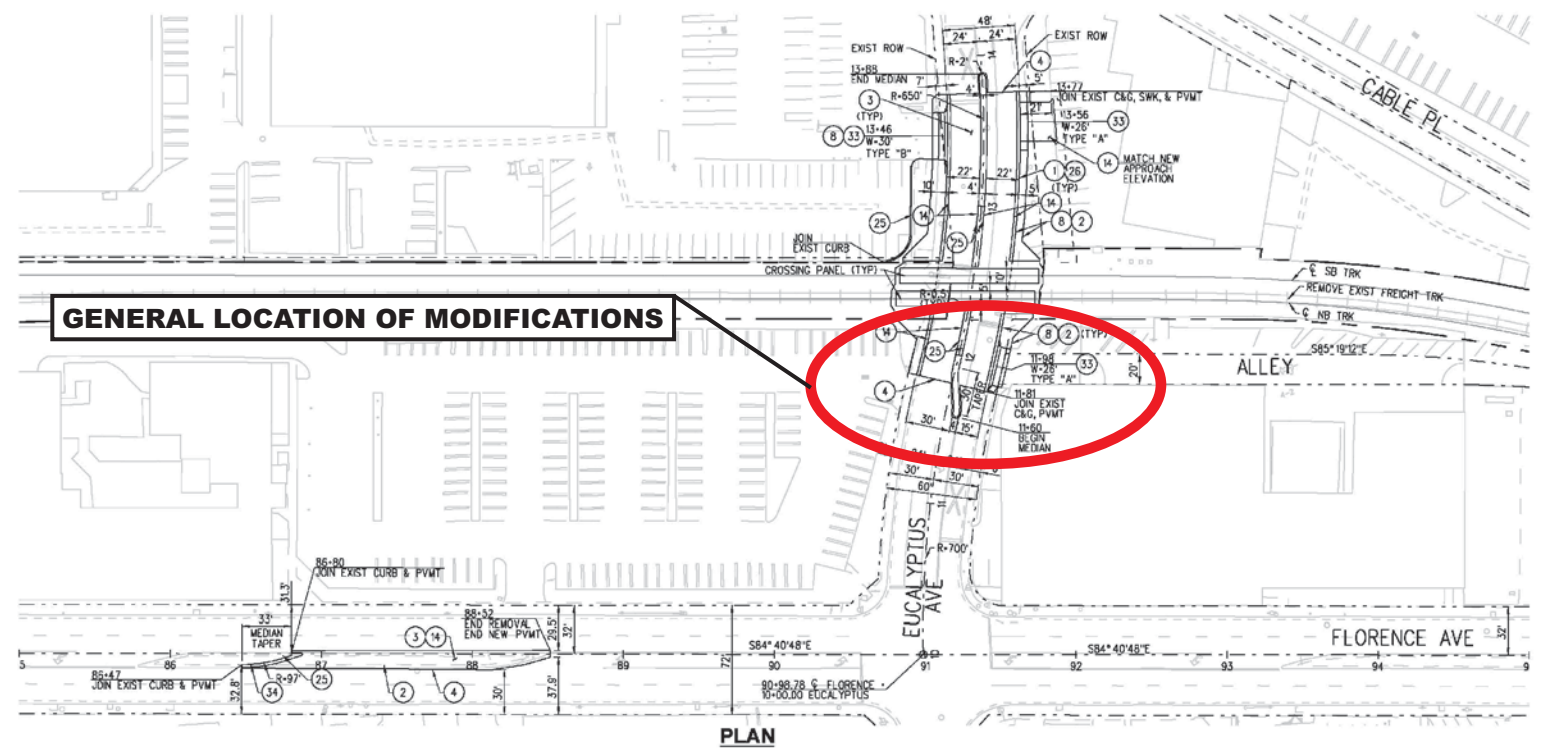
**CRENSHAW/LAX
 TRANSIT CORRIDOR PROJECT**

**STREET MODIFICATION PLAN
 FLORENCE AVE AND IVY AVE**

CONTRACT NO	E-0117
DRAWING NO	C-1511
REV	0
SCALE	Horiz: 1" = 40' Vert: 1" = 10'
SHEET NO	

Figure B10

Florence Avenue at Eucalyptus Avenue



NOTE:
FOR COMPLETE LIST OF CONSTRUCTION NOTES
SEE DWG C-1504

USER:SO.57960 4/14/2012 3:31:47 PM c:\pwworking\hmm\hmm-263779\so57960\dms5136\CLC1510.dwg PenTable-MFA.TBL PLOT Driver:pdfc:\pwworking\hmm\hmm-263779\so57960\dms5136\CLC1510.dwg

THE PREPARATION OF THIS DRAWING HAS BEEN FINANCED IN PART THROUGH A GRANT FROM THE U.S. DEPARTMENT OF TRANSPORTATION, FEDERAL TRANSIT ADMINISTRATION (FTA) UNDER THE FEDERAL TRANSIT ACT OF 1964, AS AMENDED, AND IN PART BY THE FUNDS OF THE CITIZENS OF LOS ANGELES COUNTY AND OF THE STATE OF CALIFORNIA.						
REV	DATE	BY	APP	REG NO	EXPRS	SEAL HOLDER

DESIGNED BY
A. VIVAR
 DRAWN BY
C. SERRANO
 CHECKED BY
J. LEVY
 IN CHARGE
C. HEAD
 DATE
FEBRUARY 29, 2012

LOS ANGELES COUNTY METROPOLITAN TRANSPORTATION AUTHORITY

 631 W. Century Blvd.
Suite 800
Los Angeles, CA 90045
Phone: 213-337-0500
Fax: 310-337-0542

CRENSHAW/LAX
TRANSIT CORRIDOR PROJECT
 STREET MODIFICATION PLAN
FLORENCE AVE AND EUCALYPTUS AVE.

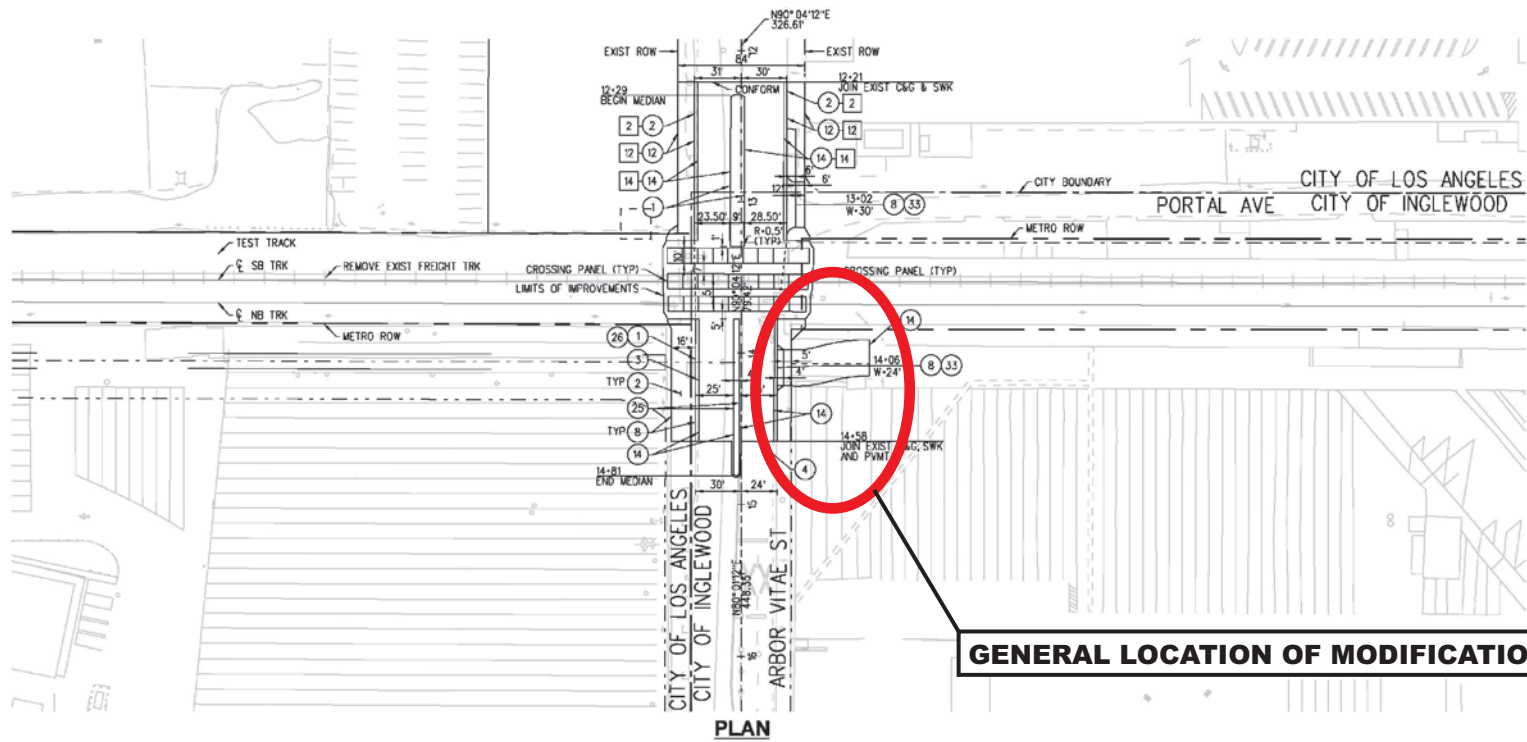
CONTRACT NO	E-0117
DRAWING NO	C-1510
REV	0
SCALE	Horiz: 1" = 40' Vert: 1" = 10'
SHEET NO	

FOR REVIEW ONLY NOT FOR CONSTRUCTION

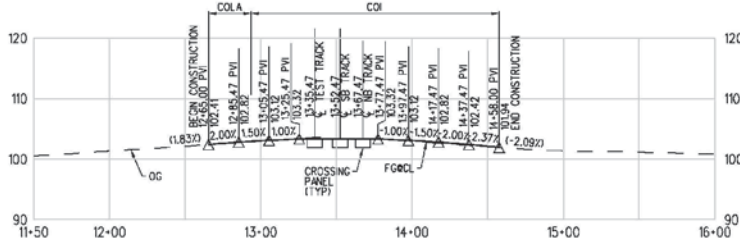


Figure B11

Harbor Subdivision at Arbor Vitae Street



GENERAL LOCATION OF MODIFICATIONS



ARBOR VITAE ST

PROFILE

NOTE:
FOR COMPLETE LIST OF CONSTRUCTION NOTES
SEE DWG C-1501 AND C-1504

- CONSTRUCTION NOTES (CITY OF INGLEWOOD)**
- 1 REMOVE EXISTING CURB & GUTTER
 - 2 REMOVE EXISTING SIDEWALK/DRIVEWAY APPROACH/CURB RAMP
 - 3 REMOVE EXISTING PAVEMENT
 - 4 SAWCUT/JOIN EXISTING PAVEMENT
 - 8 CONSTRUCT 4" THICK PCC SIDEWALK
 - 12 CONSTRUCT MEDIAN FLARE PER APWA STD. PLAN 141-1
 - 14 CONSTRUCT NEW PAVEMENT SECTION, TYPE TO BE DETERMINED BY GEOTECHNICAL ENGINEER
 - 15 NOT USED
 - 16 AREA TO BE LANDSCAPED/HARDSAPED PER LANDSCAPING PLANS
 - 17 CONSTRUCT 3" PCC OVER COMPACTED SUBGRADE MATERIAL
 - 18 EXISTING CATCH BASIN TO BE MODIFIED/RELOCATED TO ACCOMMODATE ROADWAY RECONSTRUCTION
 - 22 REMOVE EXISTING RAILROAD TRACK CROSSING PER DETAIL HEREON
 - 24 CONSTRUCT A1-8 CURB PER APWA STD. PLAN 120-1
 - 25 CONSTRUCT A1-6 CURB PER APWA STD. PLAN 120-1
 - 26 CONSTRUCT A2-6 CURB PER APWA STD. PLAN 120-1
 - 27 CONSTRUCT A3-6 CURB PER APWA STD. PLAN 120-1
 - 28 CONSTRUCT A2-8 CURB PER APWA STD. PLAN 120-1
 - 29 CONSTRUCT CURB RAMP PER APWA STD. PLAN 111-4, CASE "A", TYPE AS SHOWN
 - 30 CONSTRUCT CURB RAMP PER APWA STD. PLAN 111-4, CASE "B", TYPE AS SHOWN
 - 31 CONSTRUCT CURB RAMP PER APWA STD. PLAN 111-4, CASE "C", TYPE AS SHOWN
 - 32 CONSTRUCT CURB RAMP PER APWA STD. PLAN 111-4, CASE "D", TYPE AS SHOWN
 - 33 CONSTRUCTION DRIVEWAY APPROACH PER APWA STD. PLAN 110-2, TYPE AS SHOWN
 - 34 CONSTRUCT MEDIAN TAPER PER APWA STD. PLAN 140-2, LENGTH AS SHOWN
 - 35 CONSTRUCT CONCRETE BUS PAD PER APWA STD. PLAN 131-1
 - 36 CONSTRUCT CROSS GUTTER PER APWA STD. PLAN 123-1

USER-SOL57960 9:39:25 AM 2/28/2012 c:\pwworking\ibm\firm_263779\vol57960\dms1536\CLC1504.dwg Penelope-MTA.IBI P:\Driver-pdf_11x17_rev1.dft

REV	DATE	BY	APP	REG NO	EXPIRES	SEAL HOLDER	DESCRIPTION

DESIGNED BY
A. VIVAR

DRAWN BY
C. SERRANO

CHECKED BY
J. LEVY

IN CHARGE
G. HEAD

DATE
FEBRUARY 29, 2012

FOR REVIEW
ONLY NOT FOR
CONSTRUCTION



LOS ANGELES COUNTY METROPOLITAN
TRANSPORTATION AUTHORITY



6511 W. Century Blvd.
Suite 800
Los Angeles, CA 90045
Phone: 310-337-0500
Fax: 310-337-0967



CRENSHAW/LAX
TRANSIT CORRIDOR PROJECT

STREET MODIFICATION PLAN
ARBOR VITAE ST AND PORTAL AVE

CONTRACT NO. E-0117	REV 0
DRAWING NO. C-1504	
SCALE Horiz: 1" = 40' Vert: 1" = 10'	
SHEET NO.	