

# We will get going in just a moment



# Thank you for joining us!



This conversation will be recorded and shared afterwards online and via email



You can submit your questions using the Q&A feature.

# Presentation Panelists

## **Metro Purple Line Extension Team**

**Marlon Walker**, Community Relations Manager

- Sections 1, 2 & 3 and Division 20

**Ned Racine**, Principal Community Relations Officer

- Section 1 and Division 20

**Mindy Lake**, Principal Community Relations Officer

- Section 1, Beverly Hills and Section 2

## **Metro Arts and Community Enrichment**

**Clare Haggarty**, Senior Manager, Transportation Planning

**Erik Qvale**, Manager, Creative Services

## **Metro New Media Team**

**Ginny Brideau**, Manager, Community Relations New Media Team

**Stephanie Molen**, Principal Community Relations Officer New Media Team

**Jesus Galeno**, Community Relations New Media Team

## **Contractor Representatives and Presenters**

**Scott Donohue**, STS Community Relations Coordinator

**Matt Evans**, TPOG Project Information Coordinator

**Joanna Amador-Dempsey**, Modern Times Community Relations Director

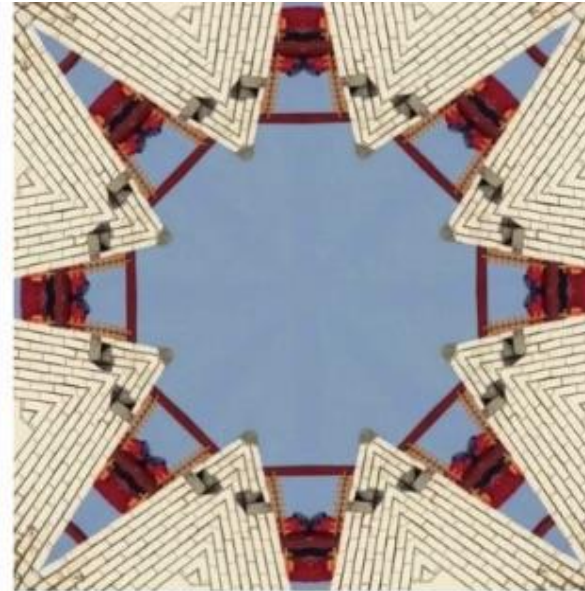
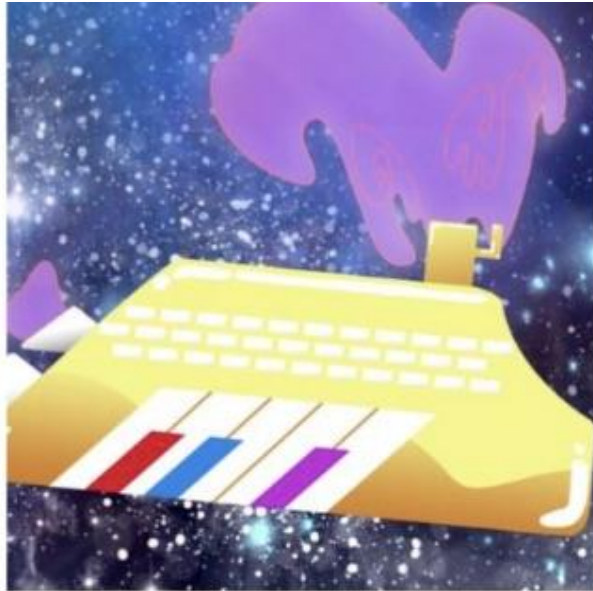
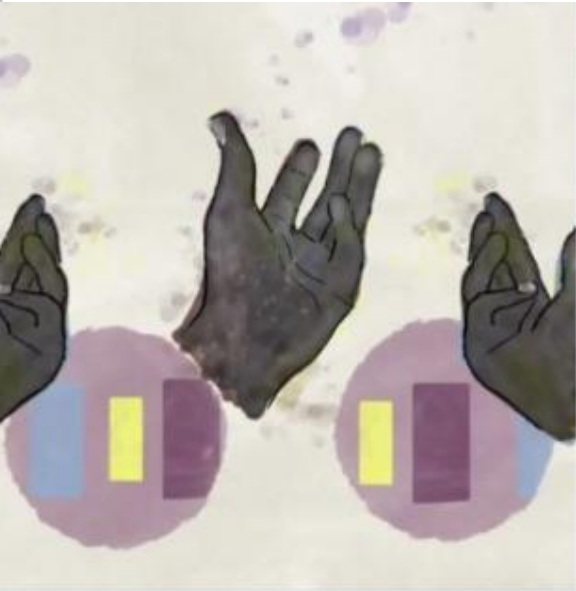
## **Metro Business Interruption Fund Team**

**Eric Chun**, Sr. Transportation Planner (Interim)

# Today's Agenda

- > 2022 artist Pool for Digital Media Opportunities
- > Project Overview
- > Division 20
  - Section 1 Construction Update
  - Section 2 Construction Update
  - Section 3 Construction Update
- > Eat Shop Play
- > Business Interruption Fund

# 2022 Artist Pool for Digital Media Opportunities



**Open to artists and artist teams working in digital media**

**Submittal deadline is August 31, 2022 at 11:59 pm**

● Maybe ● it ● was ● about ● nine  
years ● that ● we ● haven't ● met?  
● At ● the ● first ● glance, ● I ●  
knew ● it ● was ● you. ● Your  
way ● of ● calling ● my ● name,  
● the ● pauses ● between ● the ●  
words ● you ● say. ● We ● sat ●  
outside ● of ● a ● small ● cafe  
near ● the ● station ● and ● chat  
hours ● and ● hours. ● Do ●  
● you ● remember ● that ● day?



Please follow the link below for more details

*[metro.net/art](https://metro.net/art) under Art Opportunities.*

# Metro Art Bus



#MetroArtBus #SomosWeAreLA.

Existing Metro Rail Lines & Station  
 B D E

Purple Line Extension & Station  
 (under construction)

Crenshaw/LAX Transit Project  
 (under construction)

Project to Change 20-2098 © 2020 LACMTA



**Section 3:  
 Century City/Constellation to  
 Westwood/VA Hospital**

> 2.56 miles  
 > 2 stations

**Section 2:  
 Wilshire/La Cienega to  
 Century City/Constellation**

> 2.59 miles  
 > 2 stations

**Section 1:  
 Wilshire/Western to Wilshire/La Cienega**

> 3.92 miles  
 > 3 stations



**Purple Line Extension  
 Alignment**

# Sections 1, 2, & 3 Status

	Forecasted Schedule		
Section	Section 1	Section 2	Section 3
Length	3.92 Miles	2.59 Miles	2.56 Miles
New Stations	Wilshire/La Brea Wilshire/Fairfax Wilshire/La Cienega	Wilshire/Rodeo Century City/ Constellation	Westwood/UCLA Westwood/VA Hospital
Pre-Construction Activities	2014 – 2015	2016 – 2018	2018 – 2019
Construction	2015 – 2024	2018 – 2025	2019 – 2027
Operations	<b>2024</b>	<b>2025</b>	<b>2027</b>



*\*Subject to change. The PLE project team is working to deliver the project consistent with Measure M.*

# Next stop: improving rail service.

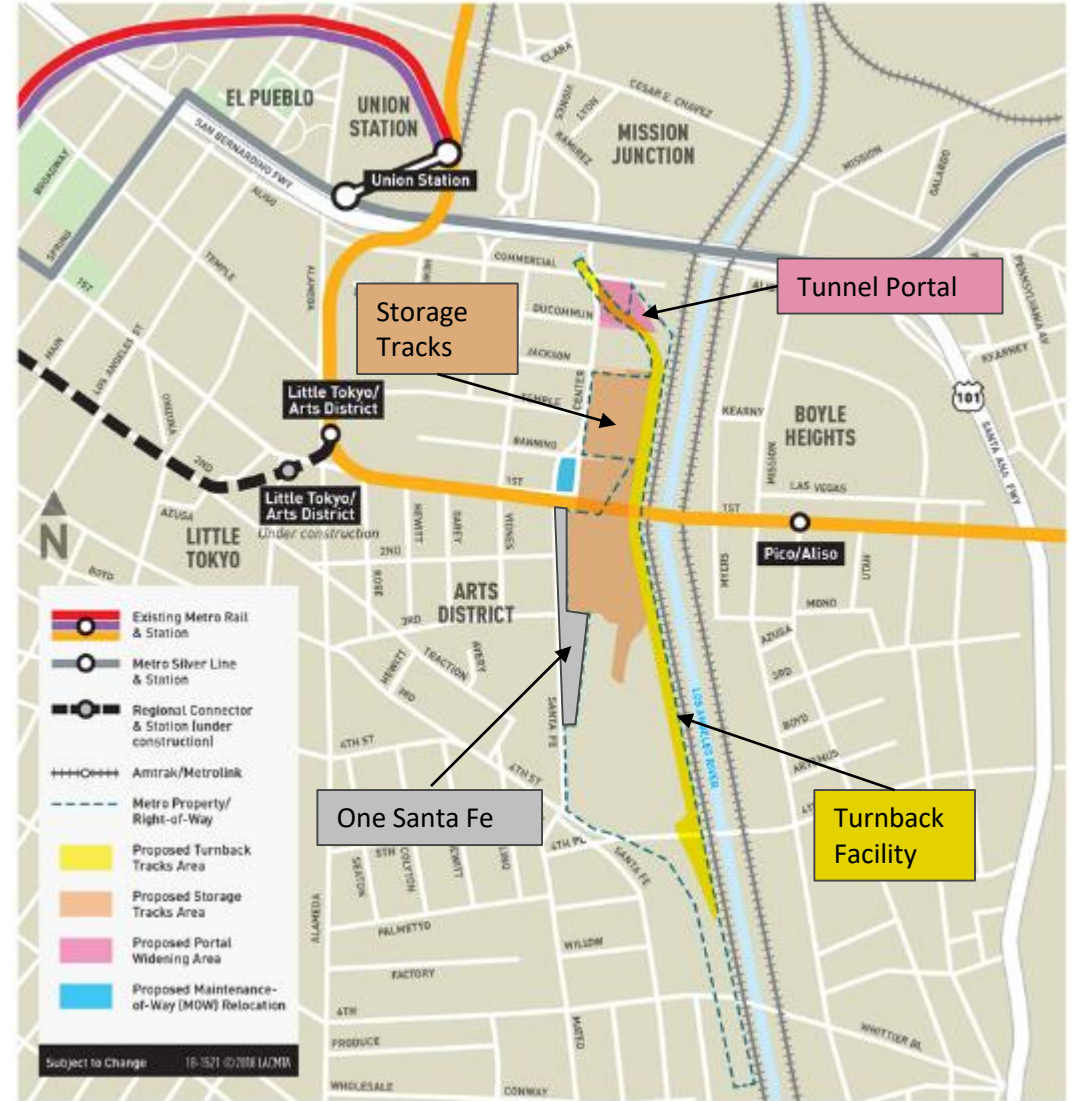
DIVISION 20 PORTAL WIDENING AND TURNBACK FACILITY



Metro

# Project Overview

- > Operational improvements to Metro's Division 20 Rail Yard will accommodate increased service levels on the Metro Red and Purple (B and D) Lines
- > Improvements include:
  - Widening of heavy rail portal
  - New turnback facility
  - Expansion and reconfiguration of rail storage tracks
- > Benefits
  - Faster and more frequent service



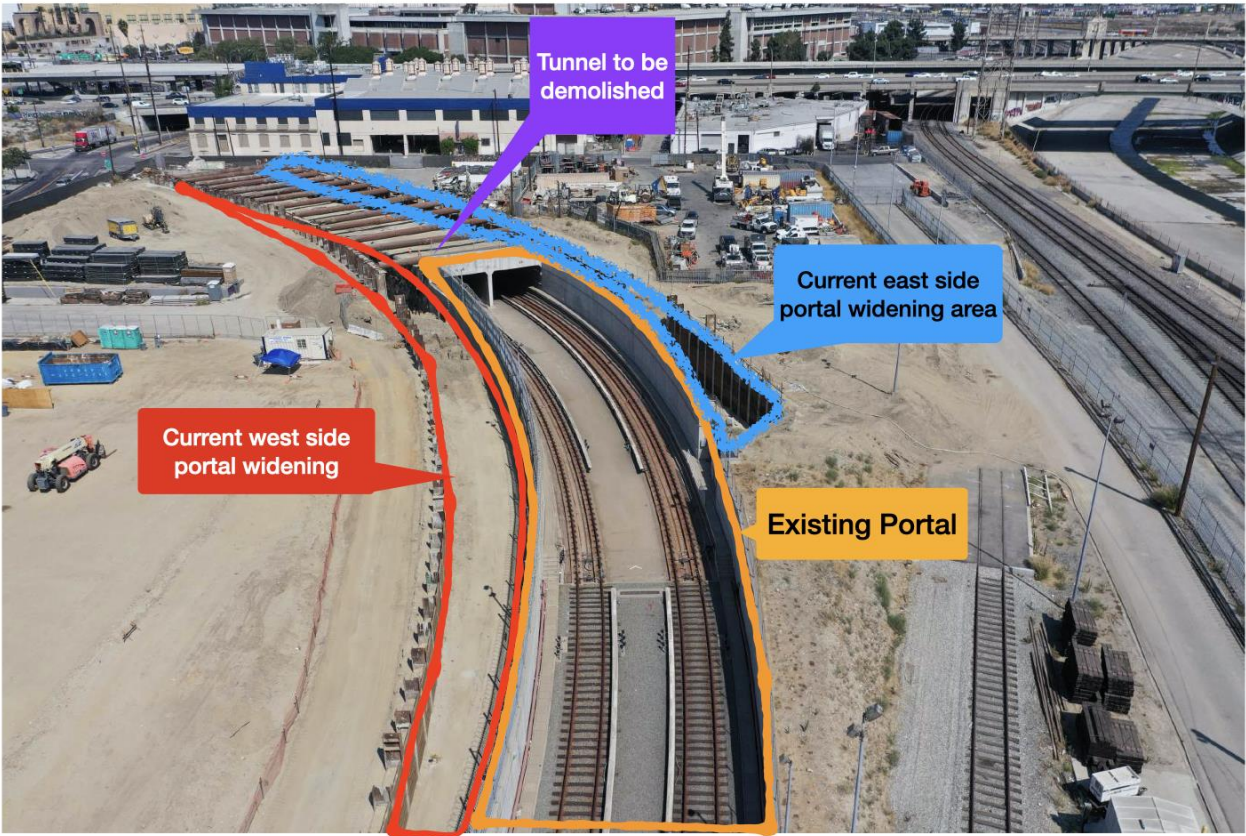
Exact location of turnback tracks and storage tracks to be determined.

# Current work- Portal Area

Before Construction



Current area\*



\*Delineations on the image are not to scale.

# Next stop: more subway.

**PURPLE (D LINE) EXTENSION TRANSIT PROJECT**  
Section 1



Metro

# Wilshire/La Brea Station Rendering



# Wilshire/La Brea Station Box



*Outline of the Wilshire/La Brea underground station box on Wilshire Bl. from Orange Dr. to Detroit St.*

# La Brea Station – Post Decking Restoration

\*Dates Subject to Change

## Curb, Gutter, Bus Pad Restoration

Following deck removal, a work zone has been established on the north side of Wilshire Blvd. between Mansfield Ave. and La Brea Ave.

Work zone supports:

- Curb and gutter restoration
- Streetlight installation
- Tree well installation
- Wheelchair and bus lane completion



A traffic control plan for this phase of street restoration is being developed. More specific information will be available later this year.

# Work Behind the K-Rail



Sidewalk, curb, and gutter are demolished in preparation for replacing the bus pad.

# Work Behind the K-Rail (Contd.)



Here workers will replace a temporary storm drain with a permanent drain.

# Work Behind the K-Rail (Contd.)



Immediately south of the Avalon Apartments, workers prepare to replace the curb and gutter.



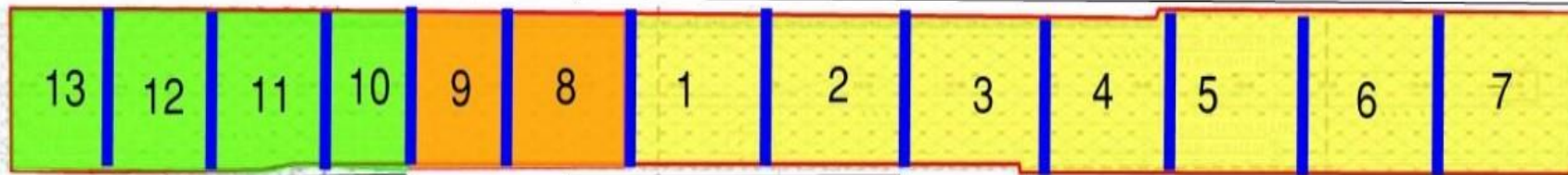
# Wilshire/Fairfax Station Rendering

# Fairfax Decking Removal - Sequence

**Phase 3 - Fairfax Ave. to San Diego Way**  
Weekends 10 - 13

**Phase 1 - Fairfax Ave. to Ogden Dr.**  
Weekends 1 - 7

**Phase 2 - Fairfax Intersection**  
Weekends 8 & 9



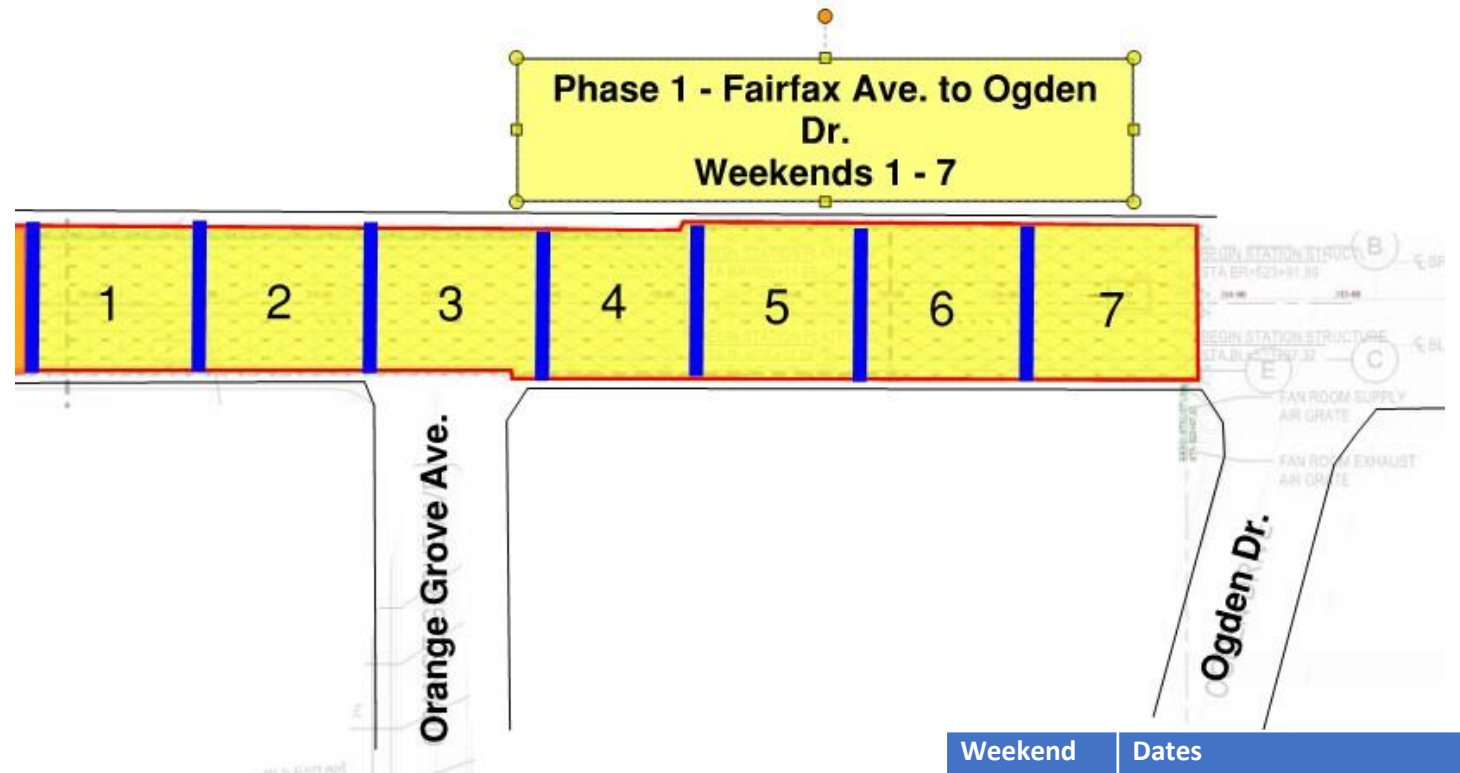
Fairfax Ave.

Orange Grove Ave.

Weekend	Dates
1	September 9 – September 12
2	September 16 – September 19
3	September 23 – September 26
4	September 30 – October 3
5	October 7 – October 10
6	October 14 – October 17
7	October 21 – October 24
8	October 28 – October 31
9	November 4 – November 7
Veteran's Day (No work)	November 11 – November 14
10	November 18 – November 21
Thanksgiving (No work)	November 25 – November 28
11	December 2 – December 5
12	December 9 – December 12
13	December 16 – December 19

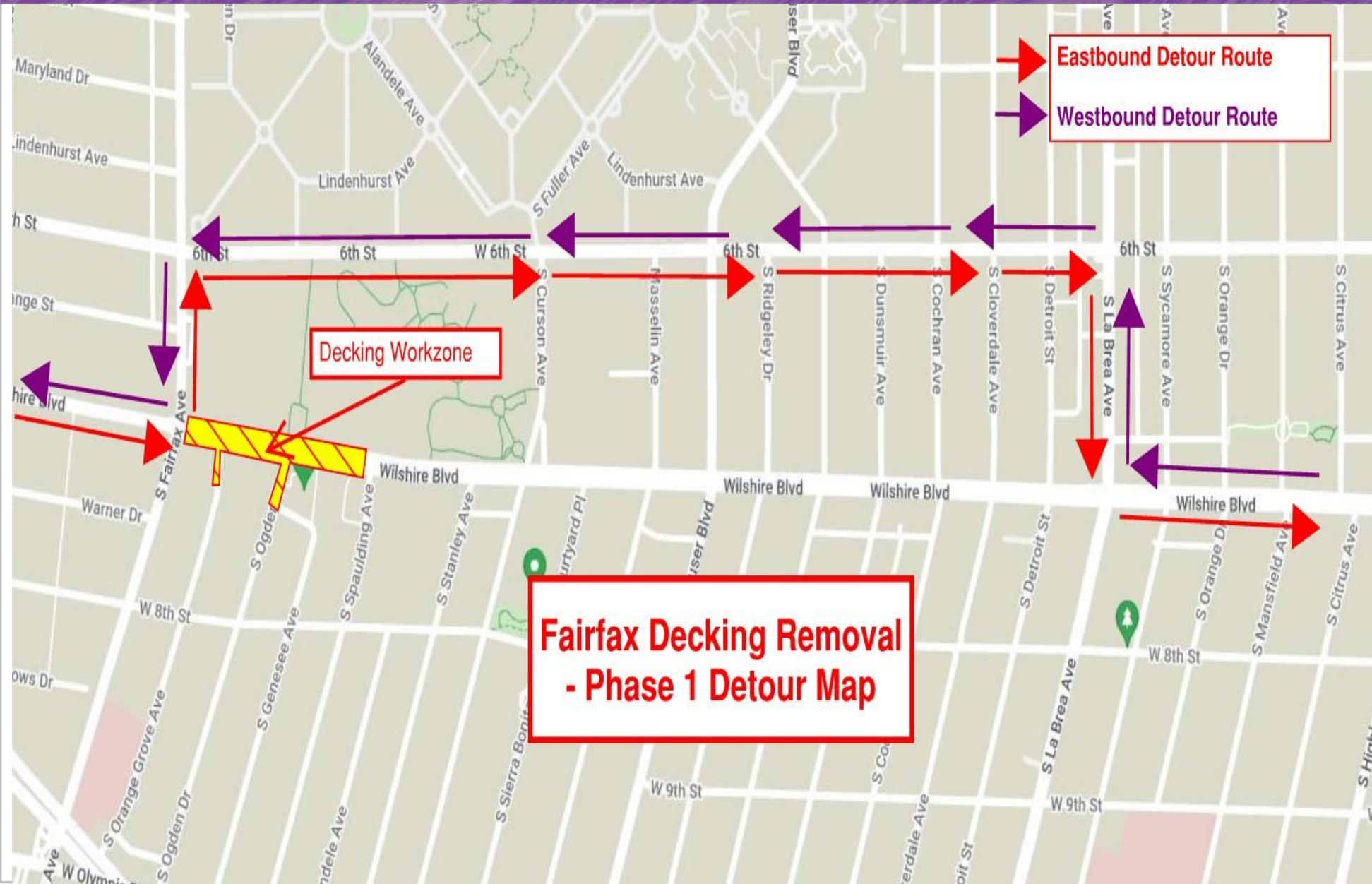
# Fairfax Decking Removal – Phase 1

- Work will begin at 9pm on Friday night and continue through 6am on Monday morning. As a contingency, the design-builder has requested approval to extend work hours as late as 12 noon on Monday. The extension will only be used in the event of an emergency.
- Decking Removal will begin at the Wilshire/Fairfax Station over the weekend of September 9 to September 12.
- Phase 1, the area immediately east of Fairfax Av, will be the first section restored.
- A full closure on Wilshire BI will be in place over the duration of this work. Eastbound traffic will be detoured at Fairfax Av, and westbound traffic will be detoured at La Brea Av



Weekend	Dates
1	September 9 – September 12
2	September 16 – September 19
3	September 23 – September 26
4	September 30 – October 3
5	October 7 – October 10
6	October 14 – October 17
7	October 21 – October 24

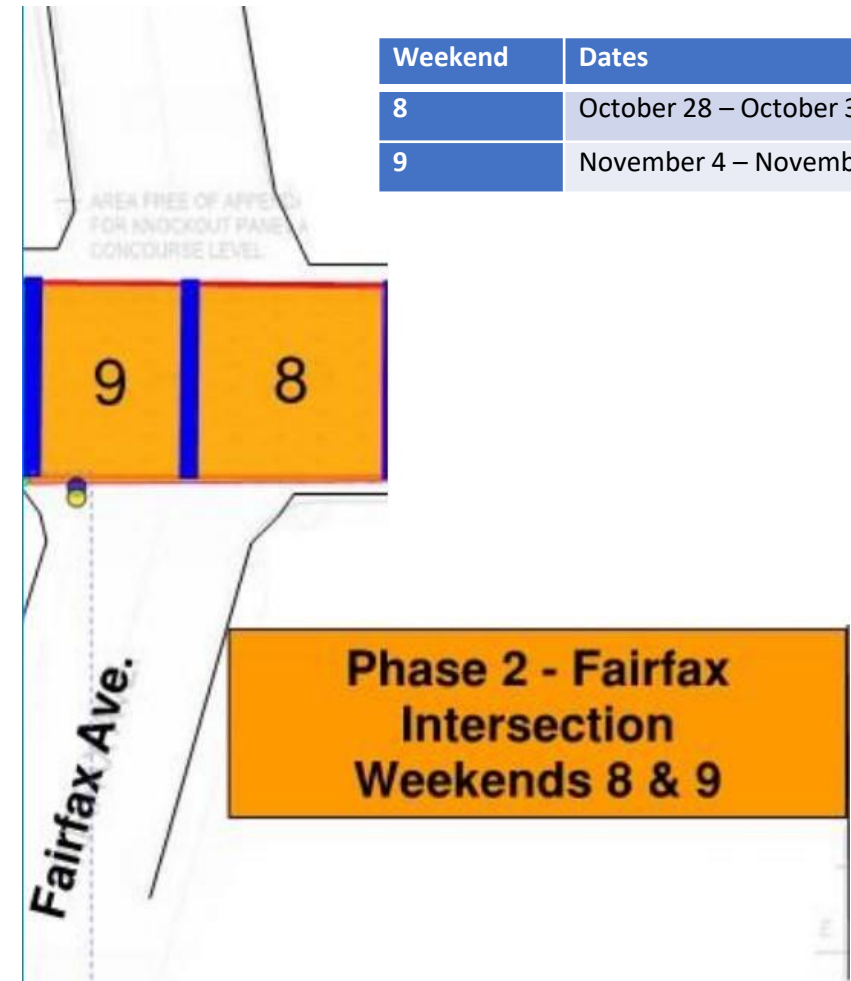
# Fairfax Decking Removal – Phase 1 Detour Map



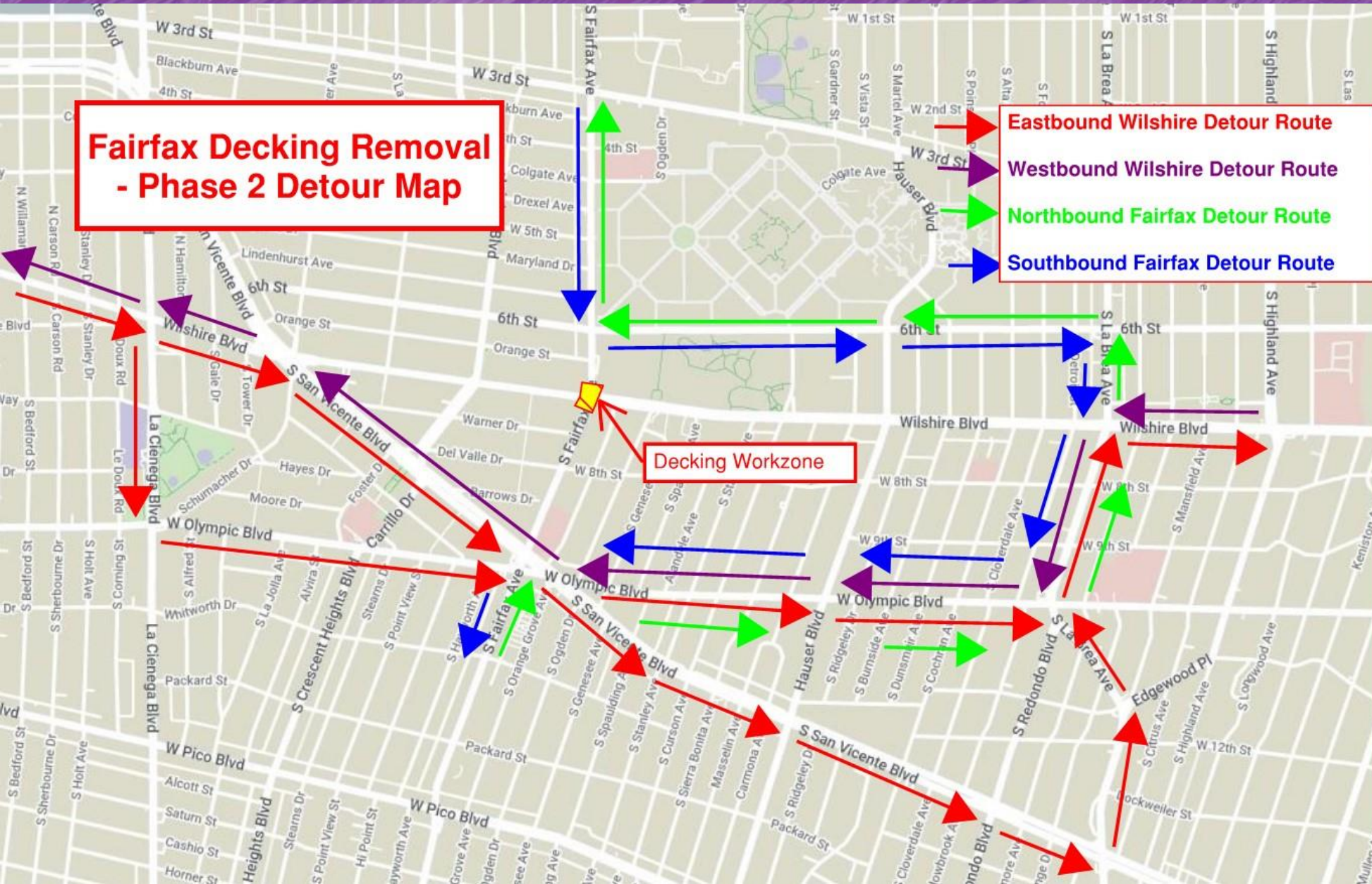
- Eastbound Wilshire > Northbound Fairfax Av > Eastbound 6<sup>th</sup> St > Southbound La Brea Av > Eastbound Wilshire
- Westbound Wilshire > Westbound 6<sup>th</sup> St > Southbound Fairfax Av > Westbound Wilshire

# Fairfax Decking Removal – Phase 2

- Work will begin at 9pm on Friday night and continue through 6am on Monday morning. As a contingency, the Design-Builder has requested approval to extend work hours as late as 12 noon on Monday. The extension will only be used in the event of an emergency.
- Following Phase 1 Decking Removal, STS will begin working within the Wilshire/Fairfax Intersection.
- This work will take two weekends to complete, October 28 – October 31, and November 4 to November 7
- Full closures will be in place on Wilshire Bl and Fairfax Av. All traffic will be detoured around the workzone.
- Southbound Fairfax Av traffic will be detoured at 6<sup>th</sup> St
- Northbound Fairfax Av traffic will be detoured at Olympic Bl
- Eastbound Wilshire Bl traffic will be detoured at La Cienega Bl and San Vicente Bl
- Westbound Wilshire Bl traffic will be detoured at La Brea Av



# Fairfax Decking Removal – Phase 2 Detour Map



**Fairfax Decking Removal - Phase 2 Detour Map**

**Decking Workzone**

- Eastbound Wilshire Detour Route
- Westbound Wilshire Detour Route
- Northbound Fairfax Detour Route
- Southbound Fairfax Detour Route

- Eastbound Wilshire > Southbound La Cienega Bl > Westbound Olympic Bl > Northbound La Brea Av > Eastbound Wilshire
- Eastbound Wilshire > Southbound San Vicente Bl > Northbound La Brea Av > Eastbound Wilshire
- Westbound Wilshire > Southbound La Brea Av > Westbound Olympic Bl > Northbound San Vicente Bl > Westbound Wilshire
- Northbound Fairfax Av > Eastbound Olympic Bl > Northbound La Brea Av > Westbound 6<sup>th</sup> St > Northbound Fairfax Av
- Southbound Fairfax Av > Eastbound 6<sup>th</sup> St > Southbound La Brea Av > Westbound Olympic Bl > Southbound Fairfax Av

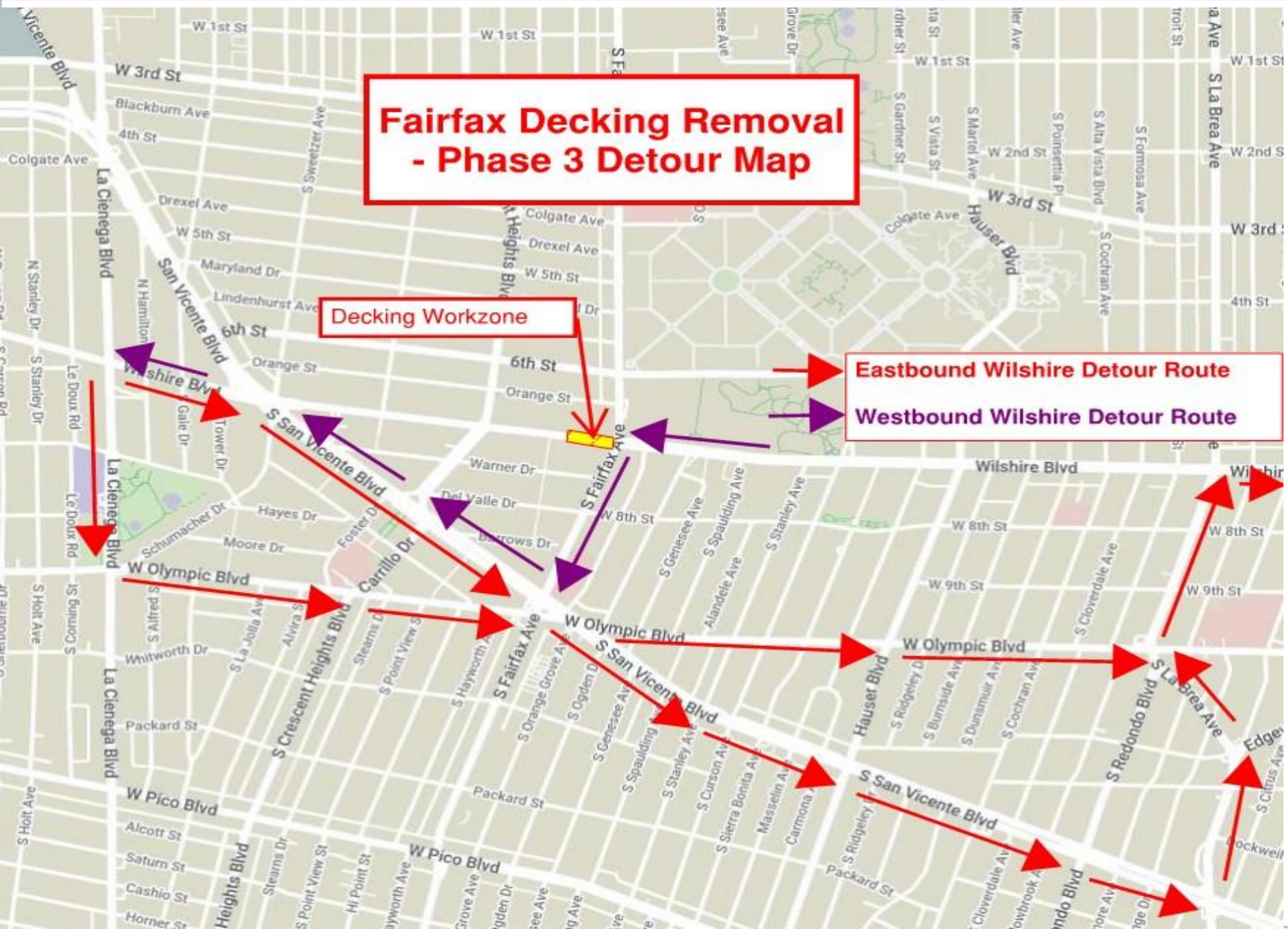
# Fairfax Decking Removal – Phase 3

- Work will begin at 9pm on Friday night and continue through 6am on Monday morning. As a contingency, the Design-Builder has requested approval to extend work hours as late as 12 noon on Monday. The extension will only be used in the event of an emergency.
- Following Phase 2 Removal, the third and final phase of work will begin to the west of Fairfax Av
- This work will take place over 4 weekends, beginning on November 18.
- Full closures will be in place at Fairfax Av and San Diego Way
- Eastbound Wilshire will be detoured at La Cienega Bl or San Vicente Bl
- Westbound Wilshire will be detoured at Fairfax Av



Weekend	Dates
Veteran's Day (No work)	November 11 – November 14
10	November 18 – November 21
Thanksgiving (No work)	November 25 – November 28
11	December 2 – December 5
12	December 9 – December 12
13	December 16 – December 19

# Fairfax Decking Removal – Phase 3 Detour Map



- Eastbound Wilshire > Southbound La Cienega Bl > Eastbound Olympic Bl > Northbound La Brea Av > Eastbound Wilshire
- Eastbound Wilshire > Southbound San Vicente Bl > Northbound La Brea Av > Eastbound Wilshire
- Westbound Wilshire > Southbound Fairfax Av > Northbound San Vicente Bl > Westbound Wilshire

# Fairfax Station – Decking Removal




Dozens of trucks will be used each weekend to haul steel, decking panels, and SOE out of the area.

Excavators and haul trucks will be utilized during backfilling operations.

Large cranes and other heavy equipment will lift the steel beams and deck panels out of the ground.

# Fairfax Station – Decking Removal

A 3D architectural rendering of a street construction site. The scene shows a multi-lane road with a white curb on the left. A large area of the road is highlighted with a bright green grid, indicating the area of decking removal. A blue speech bubble points to this area. In the background, there are trees and a building. Another blue speech bubble points to the road further east.

Following decking removal, steel beams and SOE haul out, and backfilling and utility placement, a new street surface will be placed from curb to curb.

Work will progress east to west, from one weekend to the next.

# La Brea Station – Decking Removal Equipment

## Aboveground

- Cranes
- Haul trucks, dump trucks
- Concrete pump
- Loaders
- Saw cutter, jackhammer
- Vibrator, roller

## Belowground

- Compact excavators
- Compact bulldozers
- Man lifts, forklifts
- Graders
- Loaders



# Fairfax Station – Decking Removal Schedule

\* Subject to Change

	Friday				Saturday																									
Activities	9pm	10pm	11pm	Midnight	1am	2am	3am	4am	5am	6am	7am	8am	9am	10am	11am	Noon	1pm	2pm	3pm	4pm	5pm	6pm	7pm	8pm	9pm	10pm	11pm	Midnight		
Implement Traffic Control																														
Stage Equipment																														
Deck Panel Removal																														
Deck Beam and Strut Removal																														
Deck Panel Haul Out																														
Deck Beam and Strut Haul Out																														
	Sunday																				Monday									
Activities	1am	2am	3am	4am	5am	6am	7am	8am	9am	10am	11am	Noon	1pm	2pm	3pm	4pm	5pm	6pm	7pm	8pm	9pm	10pm	11pm	Midnight	1am	2am	3am	4am	5am	6am
Haul In																														
Utility Placement																														
Backfilling and Testing																														
Asphalt Placement																														
Asphalt Curing																														
Striping																														
Removal of Traffic Control Materials																														
Open Wilshire																														

Decking removal will begin at 9pm on Friday and continue until Monday at 6am during 10 weekends between September 9, 2022 through December 19, 2022.



# Fairfax Station – Decking Removal Sequence (Part 1)

Activity	Occurs
Design-builder begins to remove deck panels along Wilshire Blvd.	Once road is closed to traffic (9pm)
Crews begin removing steel beams and support for excavation above the station	All day Saturday
Utilities will be relocated as needed. Trucks loaded with backfilling materials will be staged around the deck openings.	Saturday
Testing and quality assurance conclude prior to asphalt placement	All day Sunday

# Fairfax Station – Decking Removal Sequence (Part 2)

Activity	Occurs
Asphalt placement	Begins after backfilling (asphalt requires approximately four hours to cure/cool before it can carry weight)
City agencies test asphalt to ensure that it will be safe for commuters	After curing
The final steps of decking removal includes striping, removing traffic control devices, and opening the road	Sunday night and Monday morning

# Outreach Schedule

Outreach	Occurs
STS and Metro discusses closures with Council District 5.	May 2022
Affected residents and business owners invited to online meetings to discuss decking removal. Meeting announcement appears on Weekly Look Ahead.	One month before work begins
Wilshire/Fairfax decking removal presented during quarterly webinar.	One month before work begins
Door-to-door outreach conducted. A Construction Notice will be widely distributed adjacent to the Wilshire/La Brea intersection.	One month before work begins
A Construction Notice will be re-issued on the Metro website and distributed to the Metro Email List. Computer message signs will be placed at the work area.	One week before work begins
A Construction Notice describing the work will be sent in the Weekly Look Ahead email.	Weekly

# Wilshire/La Cienega Station Rendering



# La Cienega Station Backfilling

\*Subject to Approval

- > **What:** Beginning in August 2022, STS will begin Station Backfilling at La Cienega.
  - > This is the first of multiple construction activities in advance of decking removal and street restoration.
- > **Why:** The Station Roof is approximately 20ft below the street surface. That area will need to be filled with slurry, soil, and utilities.
  - > STS will need to restore utilities in the street, including sewer, storm drains, and other utilities.
- > **Traffic Control and Work Hours:** Additional information will be available in future construction notices and community presentations.

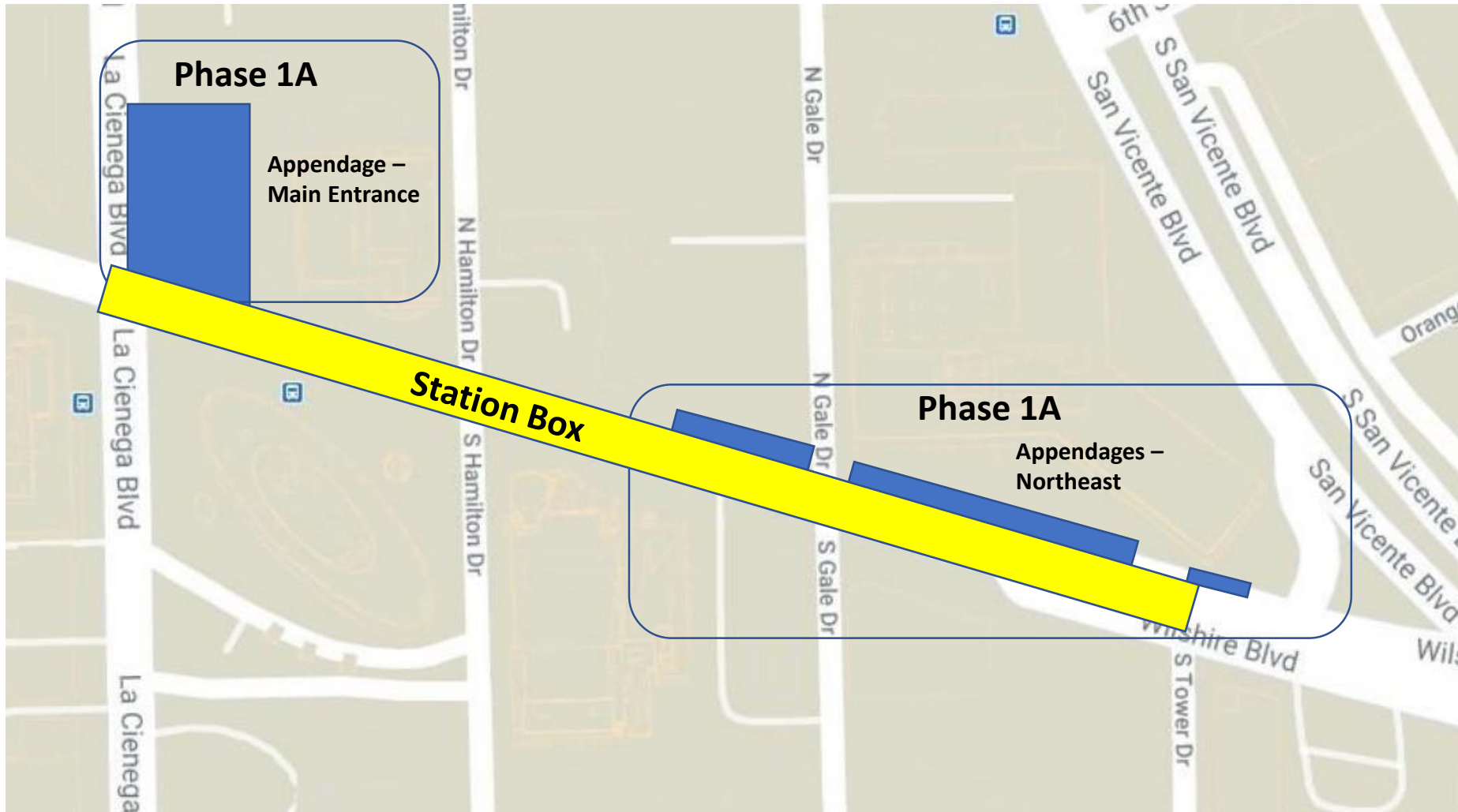


*Backfilling operations at Wilshire Bl and Orange Dr, within the City of Los Angeles*

# Wilshire/La Cienega Station Appendage Work

- > **Why:** Multiple appendages will be required for each station on the Purple Line Extension
- > Each appendage structure houses a vital function for the stations:
  - Emergency exits
  - Utility rooms
  - Ventilation rooms
  - Entrance and exit structures
- > **When:** Began in March 2021 through 2023\*
- > **Where:** Information about specific traffic control and work hours will be available in future community meetings and construction notices
- > Coordination with impacted businesses will be conducted prior to the start of the next phase of appendage work

# Wilshire/La Cienega Station: Appendage Structures Phase 1A



Station appendage locations

# Wilshire/La Cienega Station Appendage Work

*\*Dates subject to change.*

## **Phase 1A Traffic Control (March 2021 through November 2022)\***

- Wilshire Blvd. between San Vicente Blvd. and La Cienega Blvd. reduced to two lanes in each direction.
- Left turns from Wilshire Blvd. onto Gale Dr. will be restricted from both directions. Left turns from Tower Dr. onto westbound Wilshire Blvd. will be restricted.
- The east/ west crosswalk on the south side of Wilshire Blvd. at Gale Dr. will be maintained.
- The north sidewalk between San Vicente Blvd. and Gale Dr. will be closed during this phase of work. A pedestrian detour for east/west travel will be in place on the south side of Wilshire. Access to 8383 Wilshire will be maintained.
- The loading zone in front of the Saban Theatre on Wilshire Blvd will be closed over the duration of this closure.
- A full closure of Gale Dr. north of Wilshire Blvd. will be in place during Phase 1B of this work.

# Wilshire/La Cienega Station: Appendage Structures Phase 1B

*\*Dates subject to change.*



## Phase 1B Traffic Control (January 7, 2022 through September 2022)\*

- Wilshire Blvd. between San Vicente Blvd. and La Cienega Blvd. reduced to two lanes in each direction
- Gale Dr. north of Wilshire Blvd. will be fully closed through September 2022.
- Left turns from Wilshire Blvd. onto Gale Dr. will be restricted.
- Left turns from Tower Dr. onto Wilshire Blvd. will be restricted.
- **The north/south crosswalks at Gale Dr will be closed**
- The north sidewalk between San Vicente Blvd. and west of Gale Dr. will be closed during this phase of work. A pedestrian detour for east/west travel will be in place on the south side of Wilshire. Access to 8383 Wilshire will be maintained.
- The loading zone in front of the Saban Theatre will be closed over the duration of this closure.

*Station appendage locations*

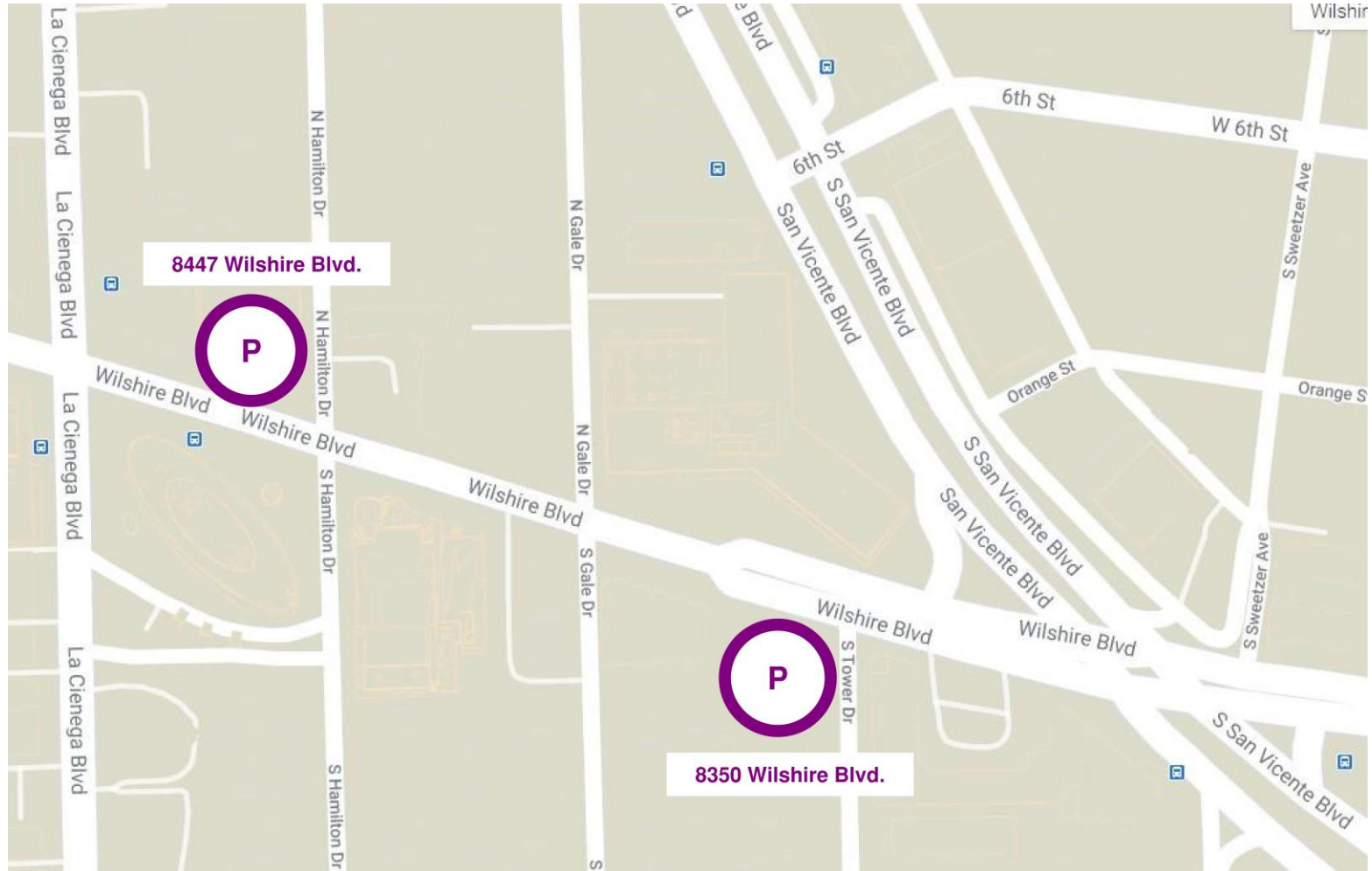


Wilshire/La Cienega Station  
Appendage Progress – Phase 1A

# Replacement Parking

## Locations for One Hour Free Parking:

- 8447 Wilshire Bl:  
Accessible from N Hamilton
- 8350 Wilshire Bl:  
Accessible from S Tower
- Please mention "**Metro**"  
upon entering the building to  
receive the 1st hour free



# Concrete and Material Deliveries

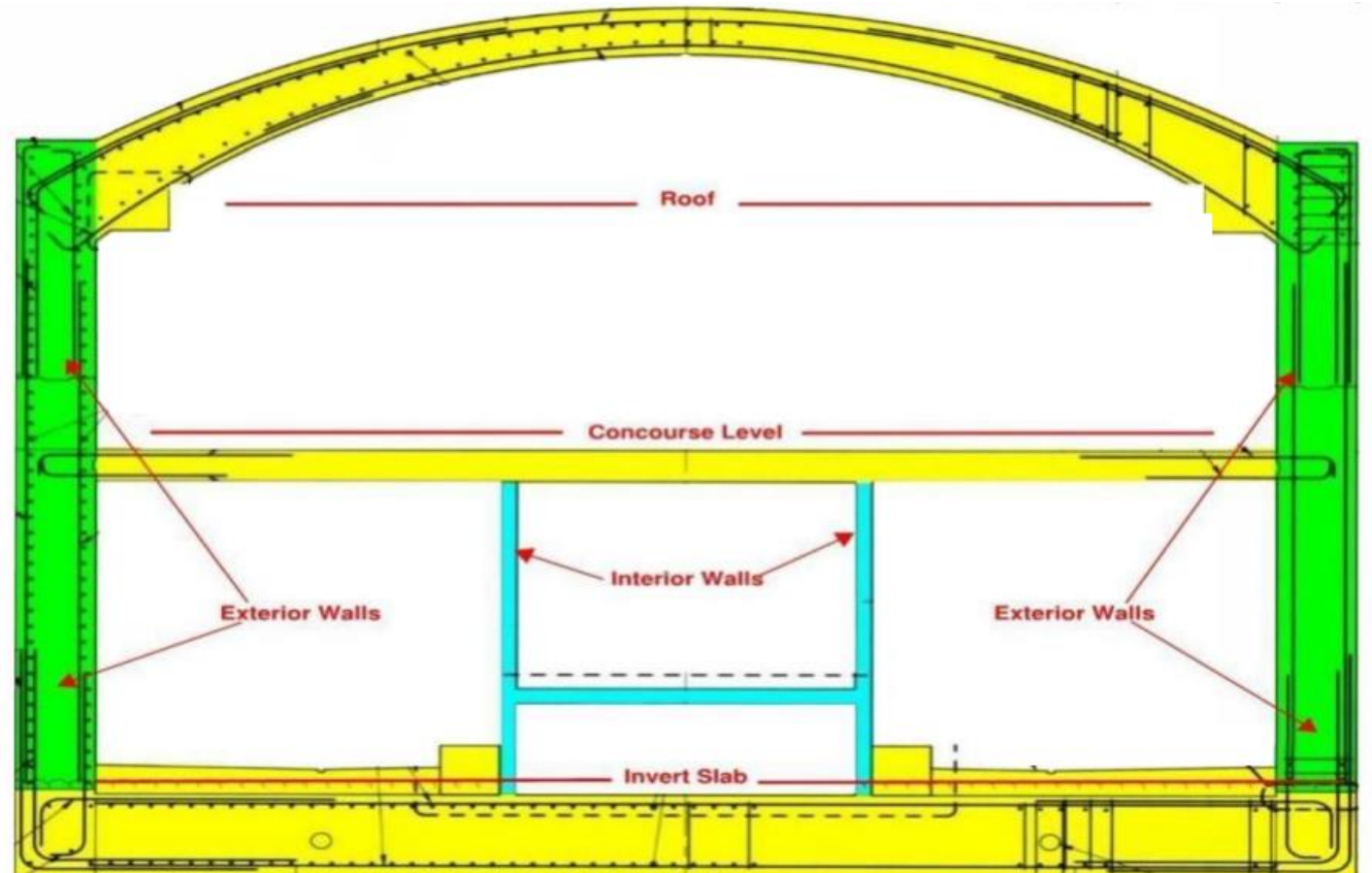
- > **Where:** Structural work on the station underneath Wilshire Bl is generally conducted from the Gale Yard and from Wilshire Bl
- > **Work Hours:** 7am to 4pm. During bump out implementation: **9am-4pm**
- > **Traffic Controls\*:**
  - Westbound Wilshire Bl will be intermittently reduced to one lane between San Vicente Bl and Hamilton Dr
  - Daily closures will be utilized in support of ongoing work activities in the staging yard at Gale Dr
- **Deck Panel Access – Hamilton Dr (9am to 4pm, weekdays; 7am to 6pm, Saturdays)**
  - Beginning in April, intermittent deck panel access may be implemented within the Wilshire/Hamilton intersection.
  - Wilshire will be reduced to a single lane in each direction between Tower Dr and Stanley Dr
  - Left turns from Wilshire to Hamilton will be restricted. Through traffic on Hamilton will be restricted at Wilshire.
- > **Noise Mitigations:** will remain in place
  - Sound blankets around noisy equipment
  - Trucks equipped with low-impact backup alarms
  - Nylon straps used to lift material



*Outside Gale Staging Yard*

# Next Steps: Station Construction

- > Construction of station roof will continue through 2022
- > Each roof placement will be 60 feet by 60 feet
- > Work activities in support of concrete and deliveries will be conducted within the staging yards, and occasionally on Wilshire BI
- > Daily construction activities may be conducted underneath Wilshire BI and from both Staging Yards for 24 hours a day



*Illustration of station interior design*

# La Cienega Station Progress

Looking East



Looking West



# La Cienega Station Progress



# Instrumentation Work

- > **When:** Ongoing in 2022
- > **Traffic Controls:**
  - Intermittent lane reductions on Wilshire Bl, La Cienega Bl, and side streets during off-peak hours may be in place to support the maintenance of geotechnical instruments in the Wilshire Bl and La Cienega Bl area
  - Intermittent lane reductions may be in place on Wilshire Bl, west of La Cienega Bl, to support coring survey work under Wilshire Bl
- > Additional details on this work will be available in future construction notices





# Next stop: more subway.

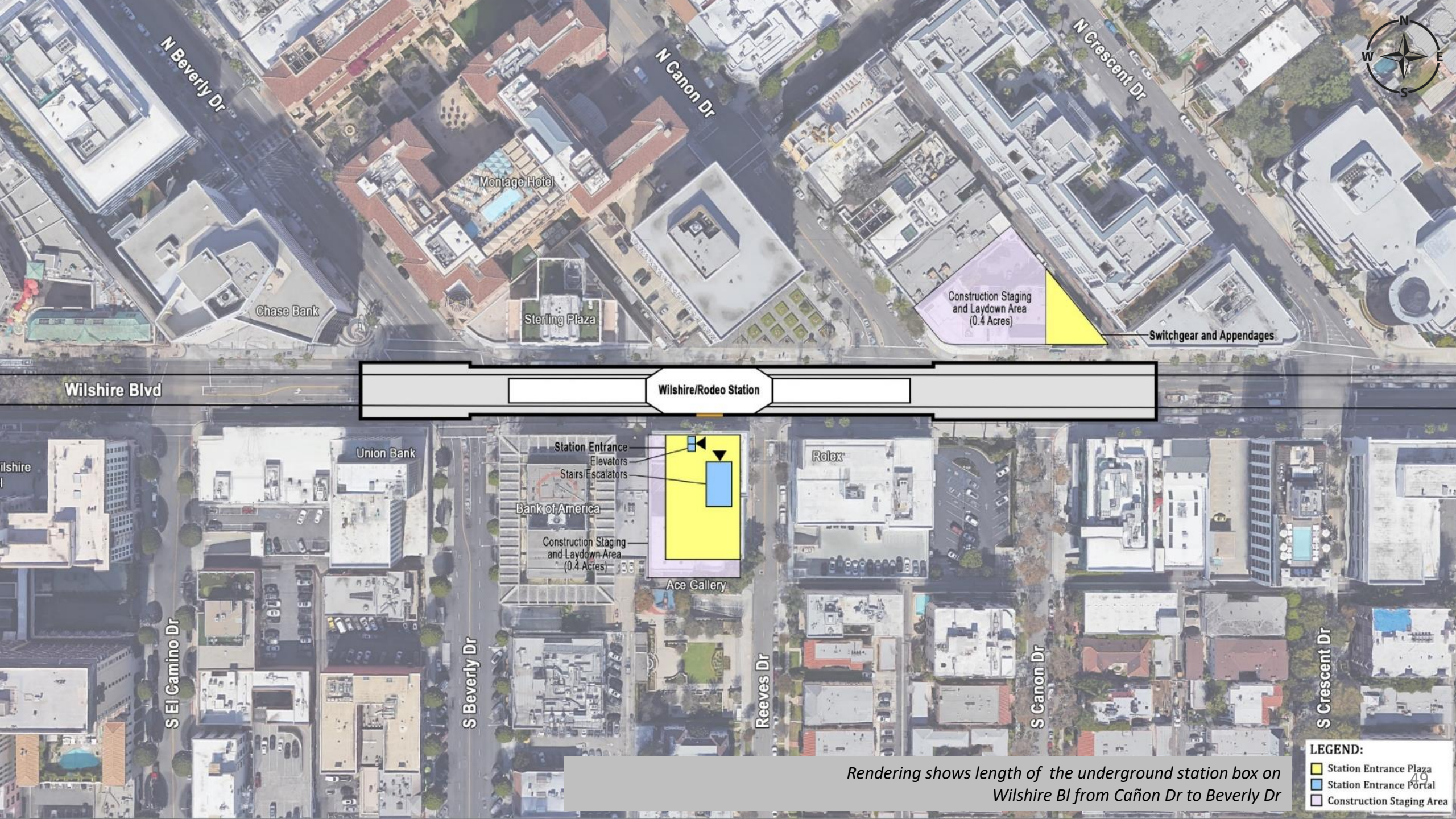
**PURPLE (D LINE) EXTENSION TRANSIT PROJECT**  
Section 2



Metro

# Wilshire/Rodeo Station Rendering





N Beverly Dr

N Canon Dr

N Crescent Dr

Montage Hotel

Chase Bank

Sterling Plaza

Construction Staging and Laydown Area (0.4 Acres)

Switchgear and Appendages

Wilshire Blvd

Wilshire/Rodeo Station

Union Bank

Station Entrance  
Elevators  
Stairs/Escalators

Bank of America

Construction Staging and Laydown Area (0.4 Acres)

Ace Gallery

Rolex

ilshire

S El Camino Dr

S Beverly Dr

Reeves Dr

S Canon Dr

S Crescent Dr

**LEGEND:**

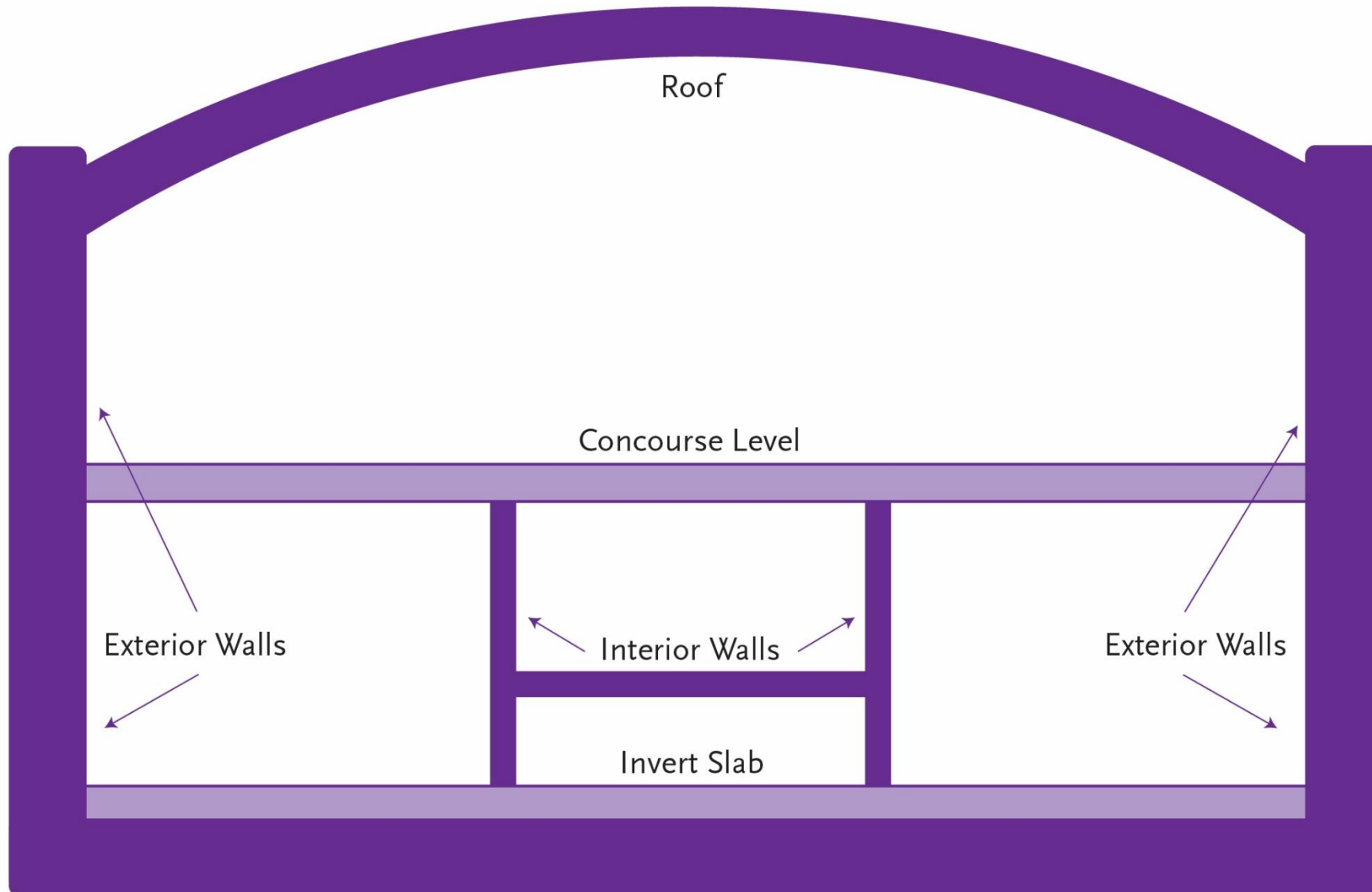
-  Station Entrance Plaza
-  Station Entrance Portal
-  Construction Staging Area

Rendering shows length of the underground station box on Wilshire Bl from Cañon Dr to Beverly Dr

# Wilshire/Rodeo Station: Permitted Work Hours and Traffic Control

- Work hours underneath the deck are 24 hours a day, 7 days a week. Deliveries of material, equipment, and concrete will be ongoing daily from Wilshire Bl. A breakdown of daily work hours on street level:
  - **From 7am to 9am and 4pm to 8:15pm**, Wilshire Blvd. will remain open with three lanes in each direction between El Camino Dr. and Crescent Dr.
  - **From 9am to 4pm**, Wilshire Blvd. may be reduced to two lanes in each direction between El Camino Dr. and Crescent Dr.
  - **From 8:15pm to 7am**, Wilshire Blvd. may be reduced to one lane in each direction between El Camino Dr. and Crescent Dr.
- Traffic control may also be implemented on Beverly Dr. At least one through traffic lane will be maintained in both directions between 9am-4pm and 8pm-7am.
- From 9am to 4pm, S. Reeves Dr. may be reduced to one lane northbound. A flagger will be on site to assist motorists with 2-way traffic.

# Wilshire/Rodeo Station: Structure Construction through 2024



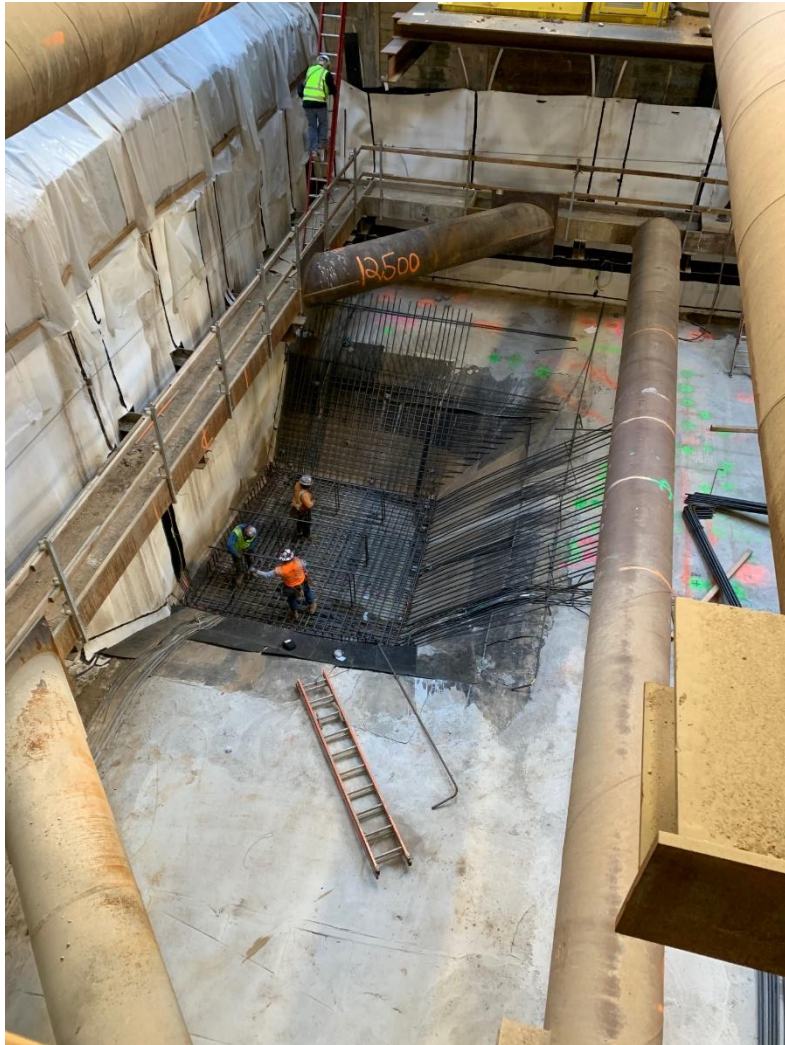


Wilshire/Rodeo Tunneling  
Progress

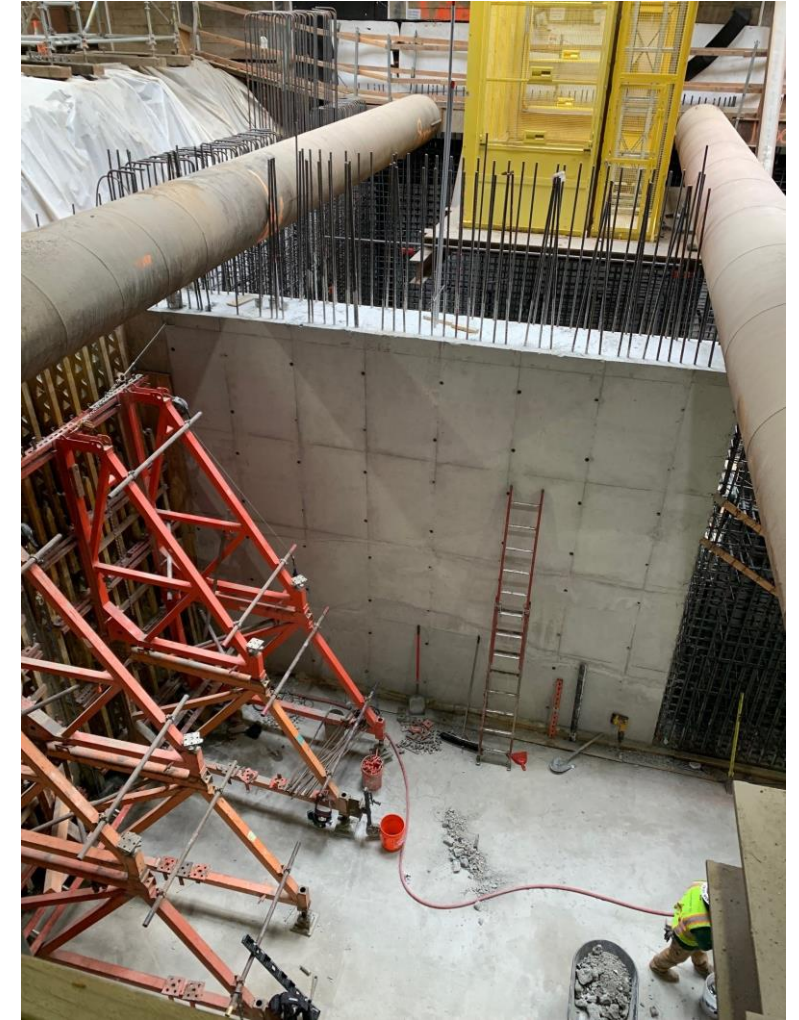
# Wilshire/Rodeo Station: Concourse Level Activity



# Wilshire/Rodeo Station: Construction Progress



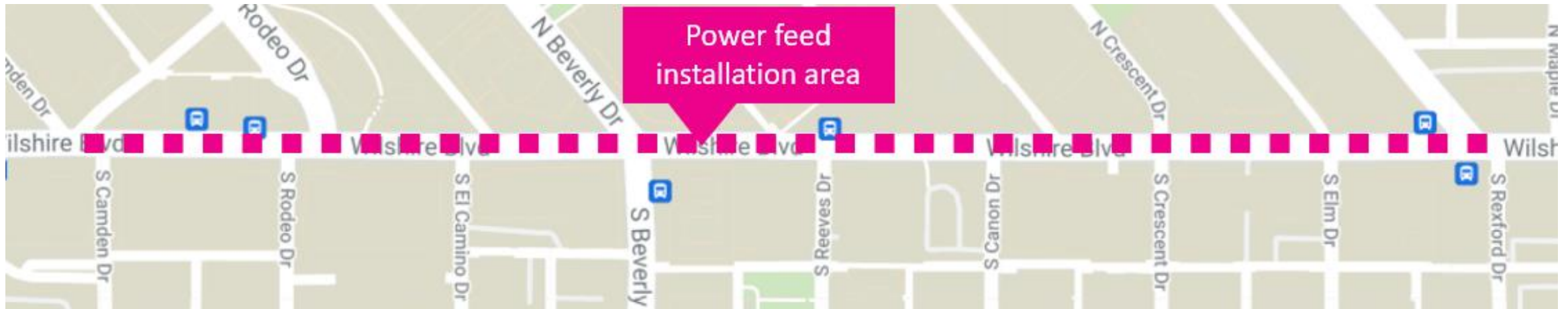
# Wilshire/Rodeo Station: Construction Progress



# Upcoming SCE Installation Work

Contractor will begin installation of SCE Permanent Power Feeds to the station.

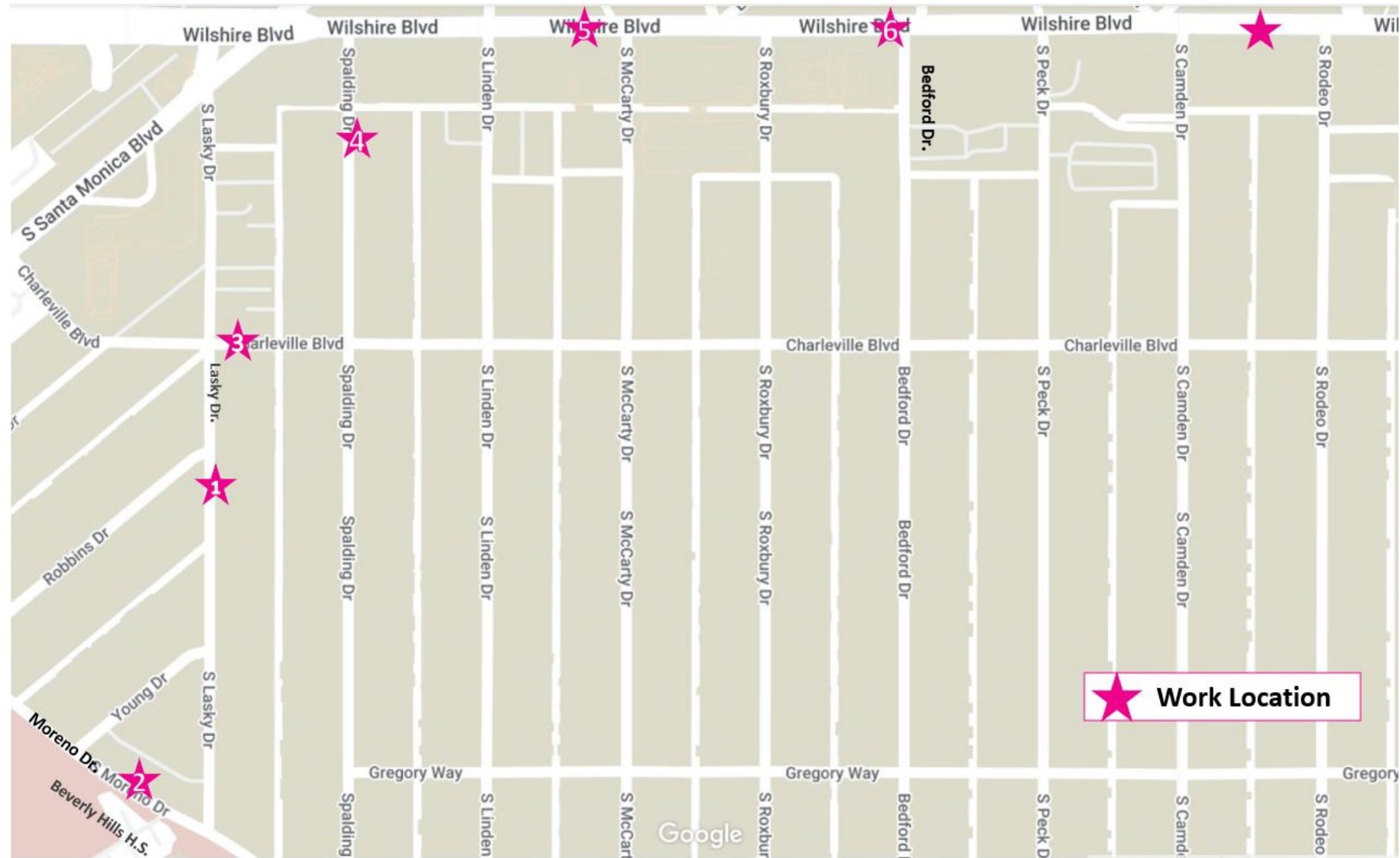
- **Where:** Wilshire Blvd. between Dayton Way and Rexford Dr.
- **Duration:** ~ 7 months [Anticipated start in August/September]
- **Work Hours:** Weekdays, 9am to 4pm and 8pm-7am
- **Traffic Control:**
  - Wilshire Blvd. may be reduced to two lanes in each direction during the day and one lane overnight



# Upcoming Ground Improvement/Cross Passage Work

The contractor began ground improvement work along the tunnel alignment in preparation for the construction of cross passage tunnels.

- **When:** Work started in late May
  - Ongoing until late 2022
- **Where:** \*14 locations; First 7 work sites noted on map
- **Work Hours:** Monday-Friday 8am-6pm off Wilshire and 8am-11pm on Wilshire: Closures remain in place 24/7 until each location is completed
- **Duration:** 2-4 weeks/location



*\*Additional notices detailing dates & closure information will be provided in advance*





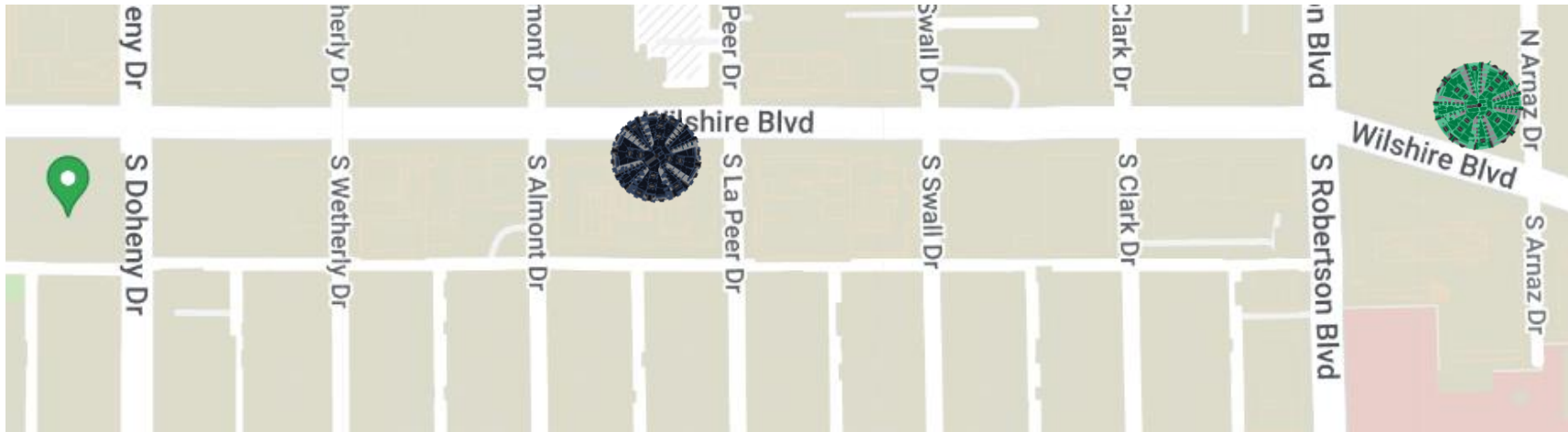
# Wilshire/Rodeo Station: Geotechnical Instrumentation

- **Where:** Instruments will be installed within the tunnel alignment and station box area to monitor ground movement, settlement and other geological conditions
  - Installations will be within the public right of way and within privately owned properties
- **Duration:** Ongoing
- **Work Hours On Wilshire Bl:**
  - Weekdays, 7am to 4pm and 8pm to 7am
- **Work Hours Off Wilshire Bl:**
  - Weekdays, 8am to 6pm and 8pm to 7am

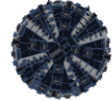


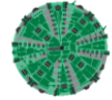
*Example of 10-foot geotechnical instrumentation pole.*

# Tunnel Boring Machine (TBM) Update



## Tunneling Statistics As of (8/3/2022)

Ruth  
 11,510 feet (total journey)  
80% complete

Harriet  
 11,510 feet (total journey)  
85% complete

- Both TBM's have passed through the Wilshire/Rodeo Station
- Will continue mining east towards Wilshire/La Cienega
- **Tunneling Duration:** Approximately 2 years from the start
- **Remaining Duration:** 2-4 months

# Wilshire/Rodeo Request for Holiday Moratorium Exemption

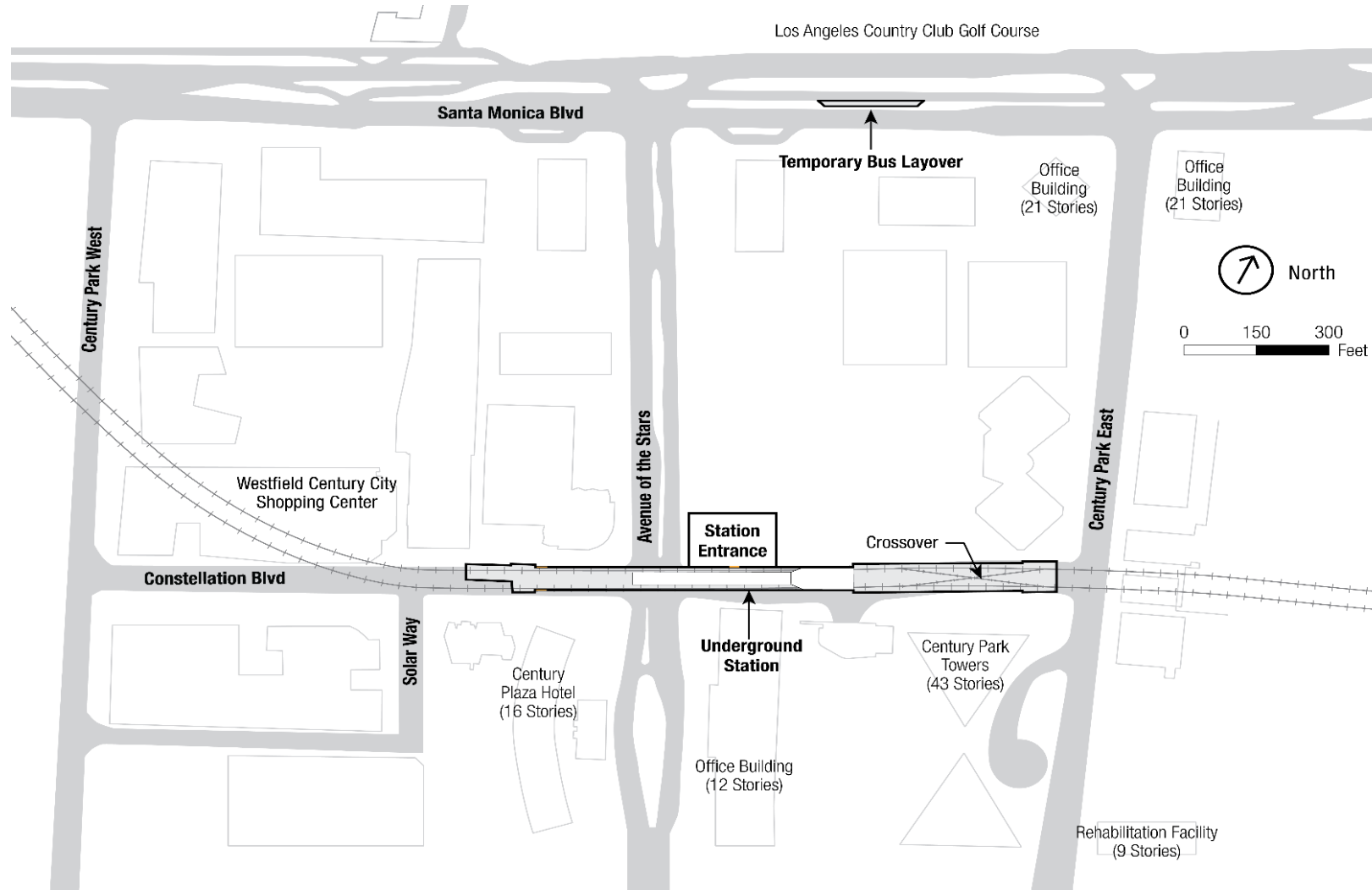
Metro and the contractor has submitted an application to the City of Beverly Hills requesting a waiver of the 2022 Holiday Moratorium, which would allow work to continue after the Thanksgiving Holiday through New Year's Eve.

- No work is planned for Thanksgiving Day, the day after Thanksgiving Day, the first night of Hanukkah, Christmas Eve, Christmas Day, New Year's Eve or New Year's Day.

# Century City/Constellation Station Rendering



# Century City/Constellation: Station Box



*Length of the underground station box on Constellation Blvd.  
from Century Park East to Avenue of the Stars.*

# Century City/Constellation: Station Excavation

- > Excavation of the underground station underneath Constellation Blvd. is in progress and will continue until reaching approximately 100 feet in depth.
  - > 70' east of Avenue of the Stars
  - > 30' west of Avenue of the Stars
- > **Work Hours:** 24 hours a day, 5 days a week (Monday – Friday)
- > **Anticipated Completion:** 1st quarter 2023
- > Temporary partial traffic lane closures may be required on Constellation Blvd. both east and west of Avenue of the Stars to facilitate this work.



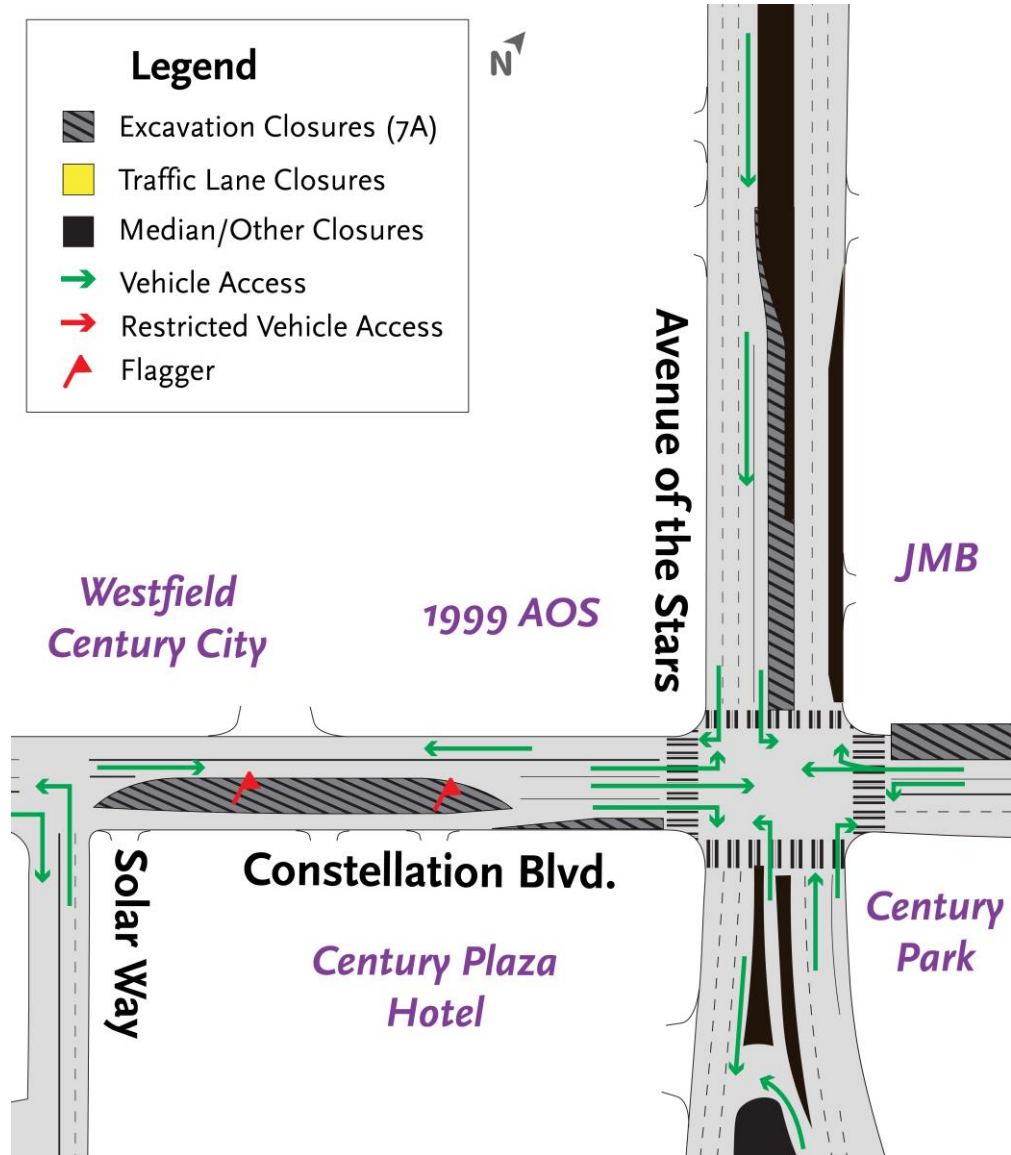
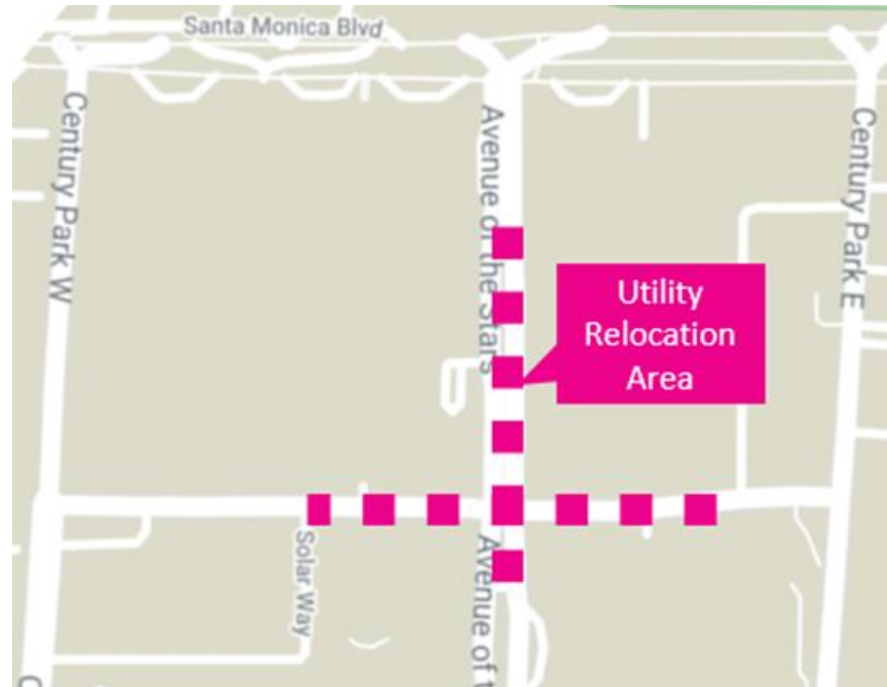
*Looking west at AOS/Constellation intersection; station entrance to the right*

# Station Entrance Excavation



# Sanitary Sewer and Storm Drain Relocation

- > **Ongoing:** (Work started in March 2022)
- > **Anticipated Duration:** Through end of January 2023
- > **Anticipated Traffic Control\*:**
  - > Lane closures on Avenue of the Stars
  - > Night closures (8pm to 6am) will be required intermittently

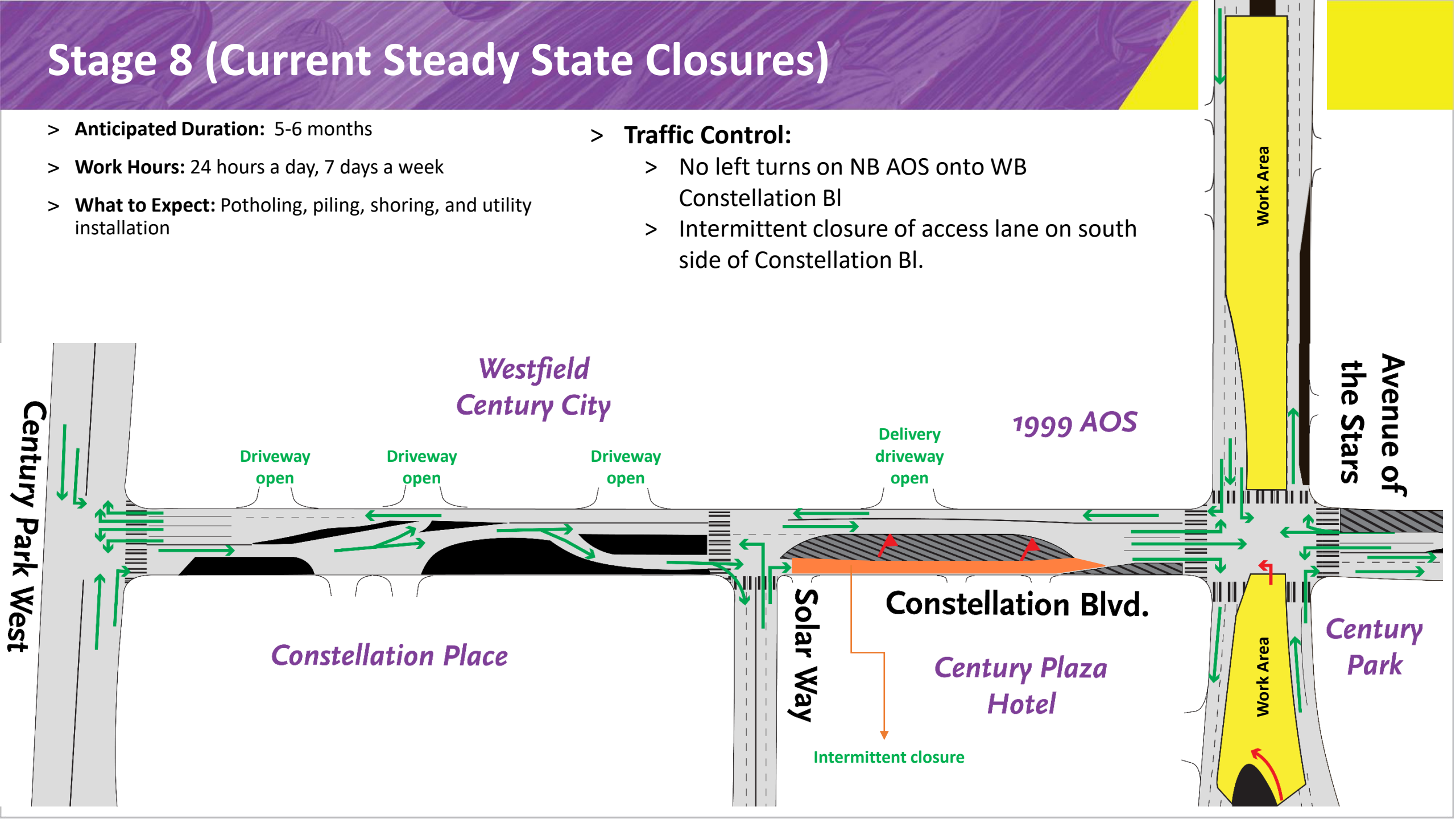


# Stage 8 (Current Steady State Closures)

- > **Anticipated Duration:** 5-6 months
- > **Work Hours:** 24 hours a day, 7 days a week
- > **What to Expect:** Potholing, piling, shoring, and utility installation

## > **Traffic Control:**

- > No left turns on NB AOS onto WB Constellation Bl
- > Intermittent closure of access lane on south side of Constellation Bl.

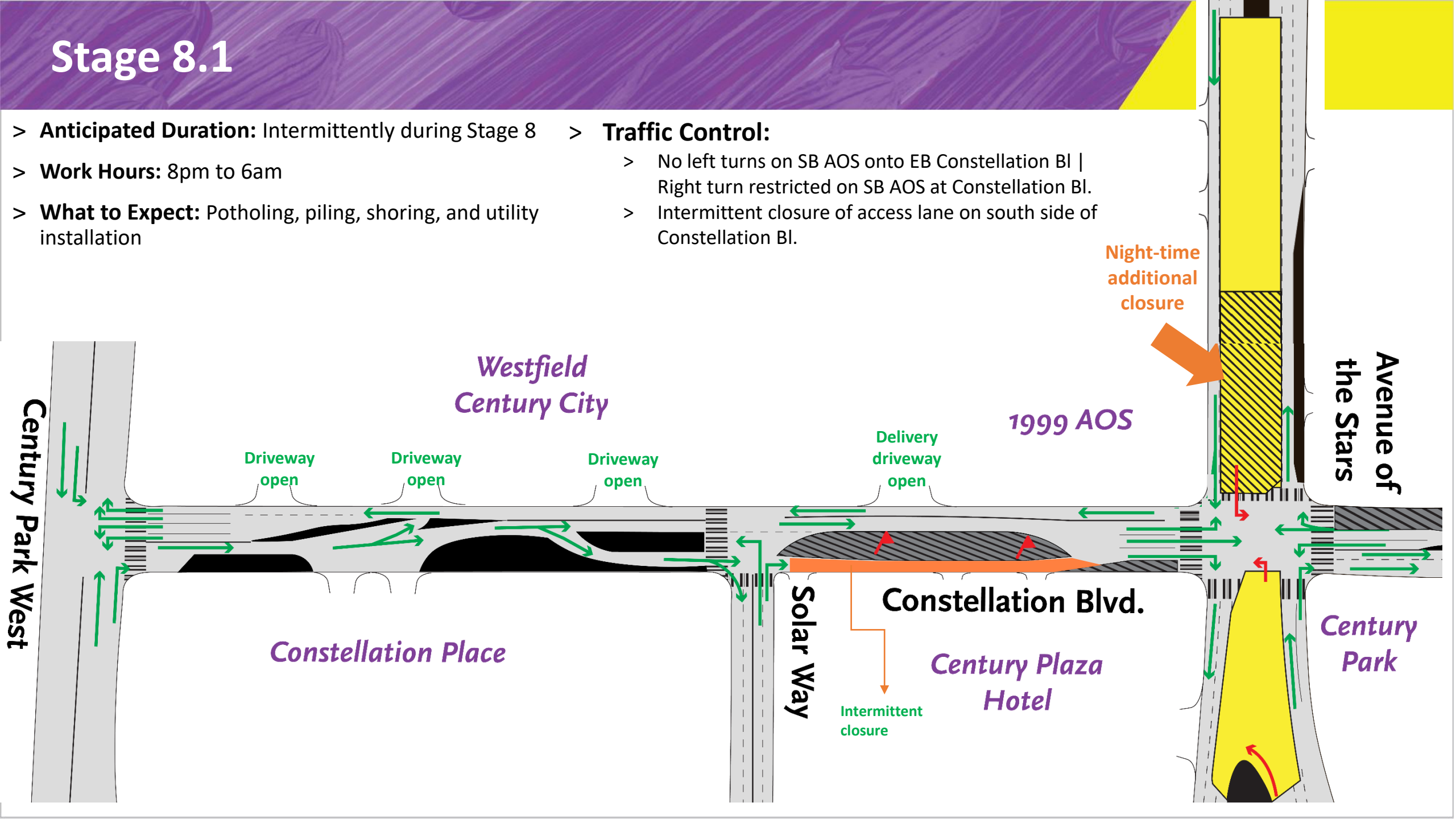


# Stage 8.1

- > **Anticipated Duration:** Intermittently during Stage 8
- > **Work Hours:** 8pm to 6am
- > **What to Expect:** Potholing, piling, shoring, and utility installation

## Traffic Control:

- > No left turns on SB AOS onto EB Constellation Bl | Right turn restricted on SB AOS at Constellation Bl.
- > Intermittent closure of access lane on south side of Constellation Bl.



# Stage 7B (Steady State Closure)

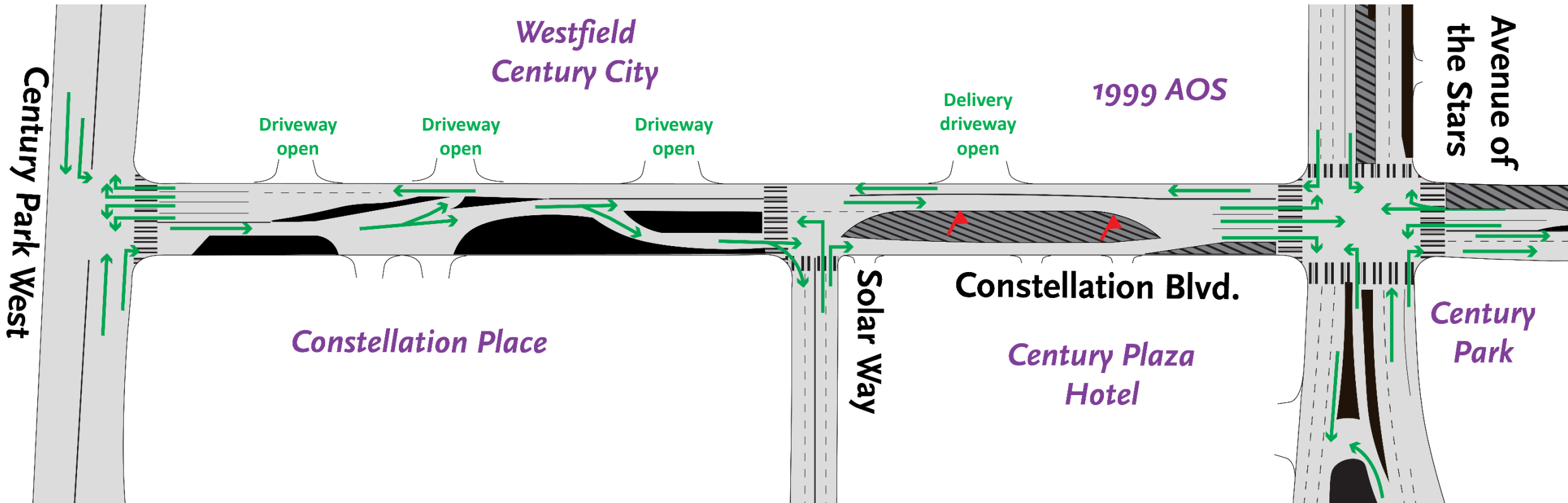
## > Anticipated Duration:

> 2 years (Re-implemented after utility relocation)

## > Traffic Control:

> One eastbound and westbound lane are accessible from CPW to AOS

> Maintaining access to Westfield driveways and Fairmont Century Plaza Hotel



# Next stop: Westwood.

PURPLE (D LINE) EXTENSION TRANSIT PROJECT  
Section 3

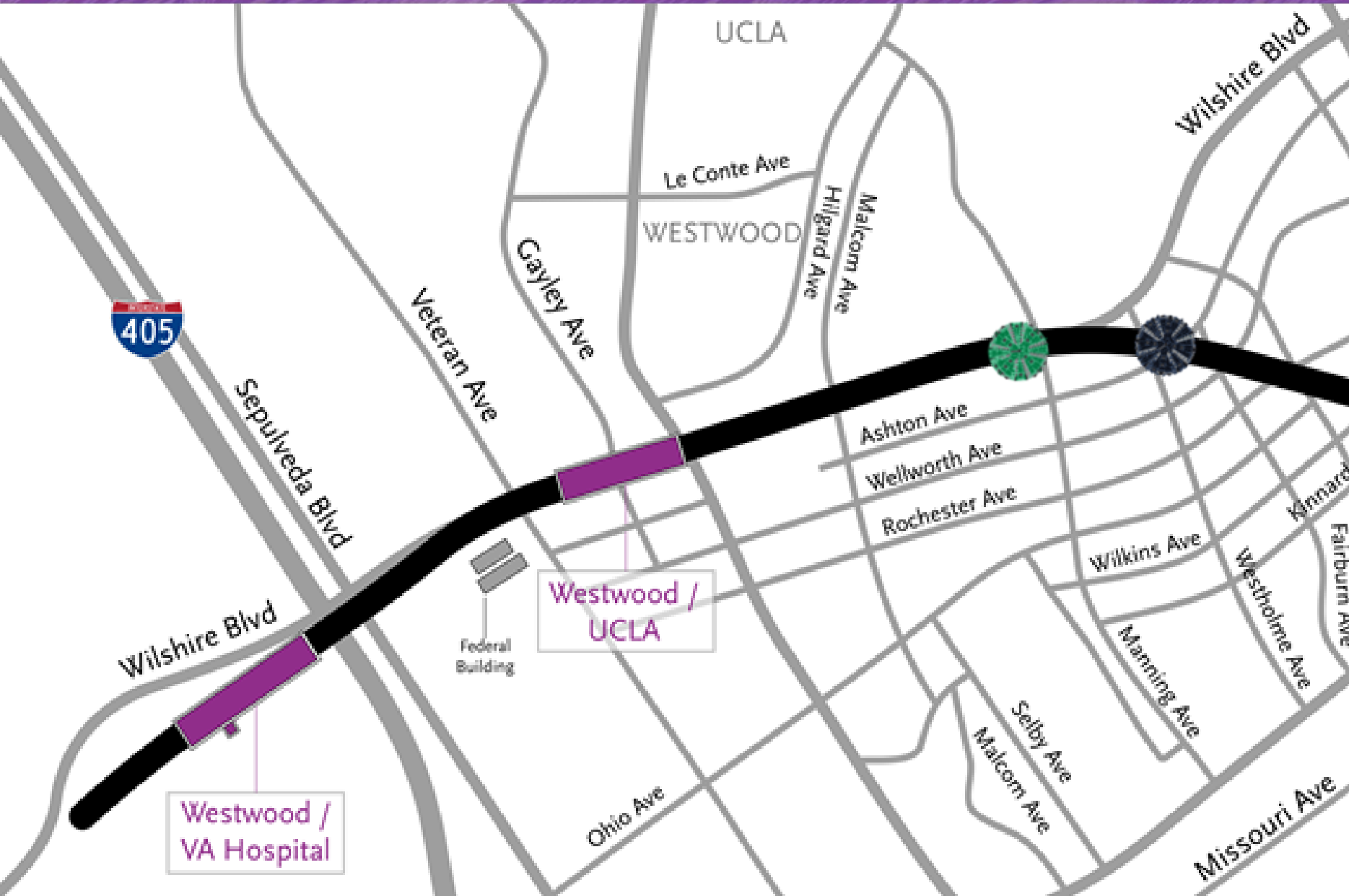
Westwood/UCLA D



# Section 3 Tunnel From Century City to Westwood



# Section 3 Tunneling Progress



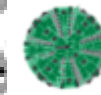
## Tunneling Statistics as of 7/31/2022

### Iris (TBM 1)



8,639 feet  
64% complete

### Aura (TBM 2)



7,463 feet  
55% complete

 Future Station Boxes

# Westwood/UCLA Station Rendering (Northwest Entrance)



# Westwood/UCLA Station Rendering (Northeast Entrance)



# Westwood/UCLA Station Rendering (Southeast Entrance)

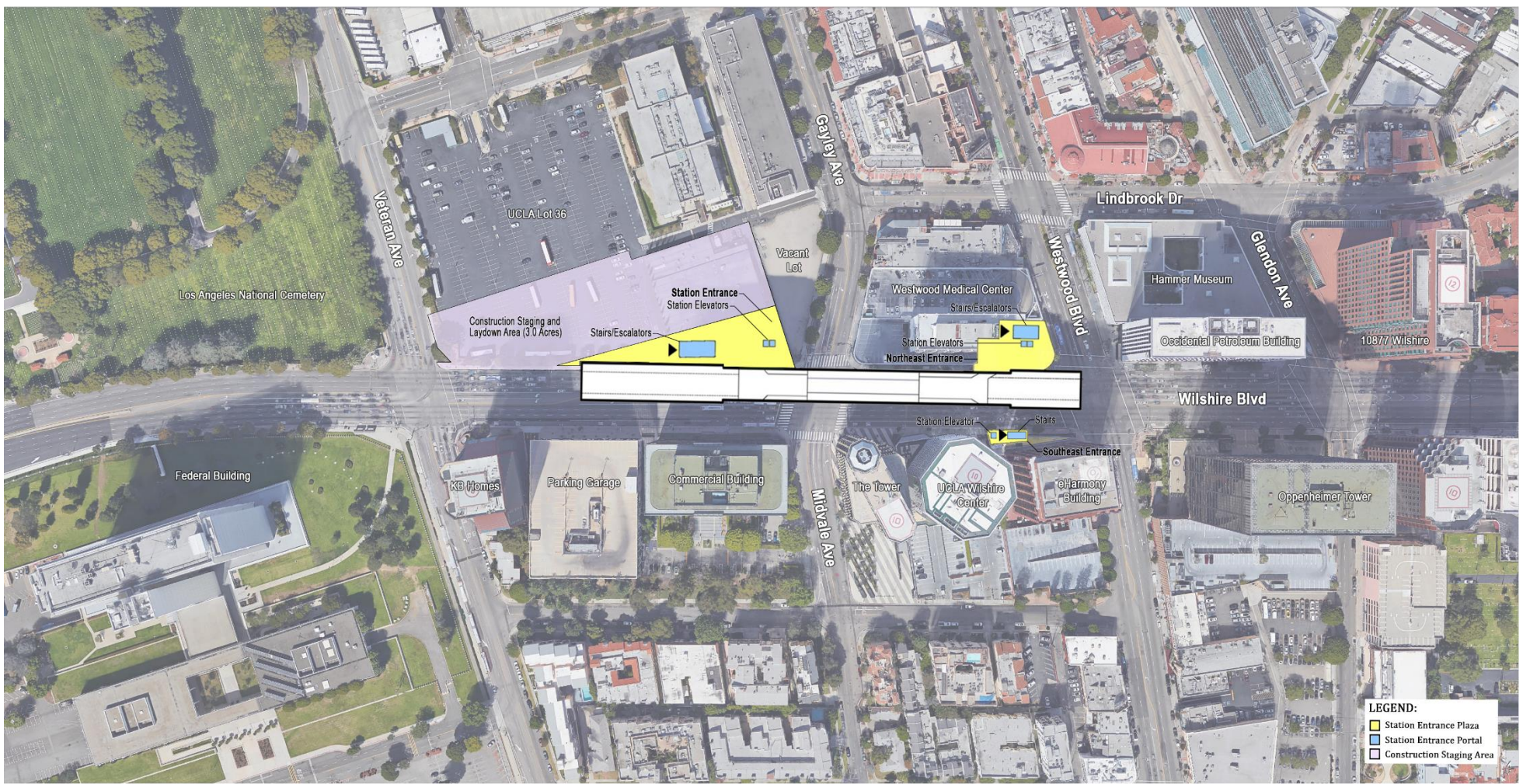
DRAFT



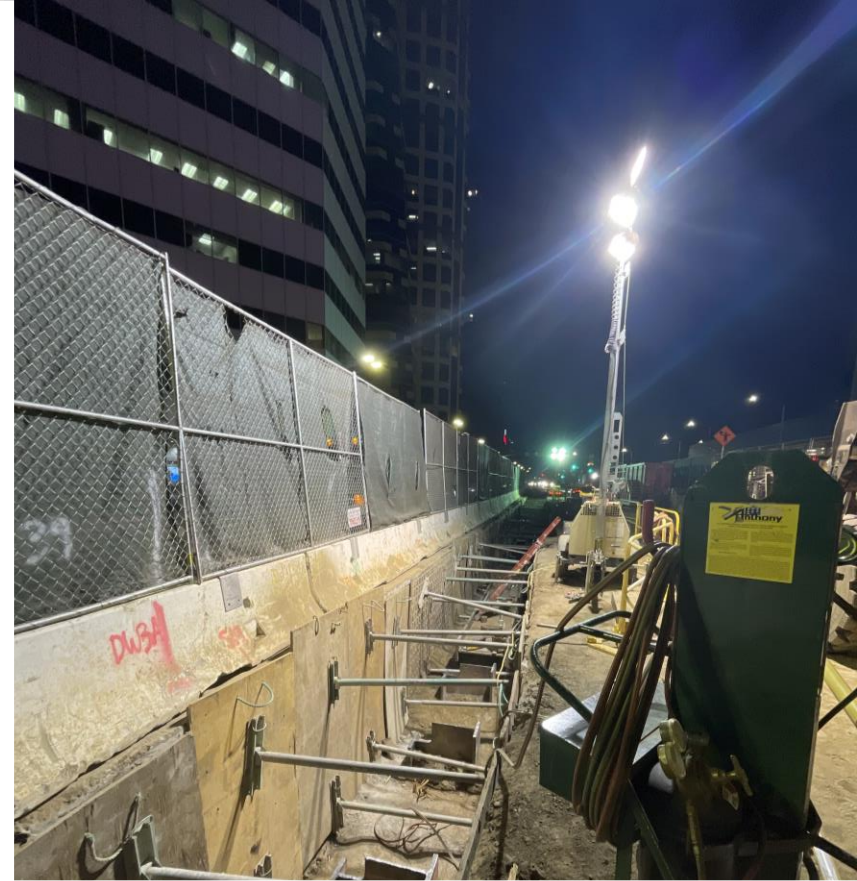
# Westwood/UCLA Station Box



*Rendering shows length of the underground station box on Wilshire Bl between Westwood Bl and Veteran Av.*



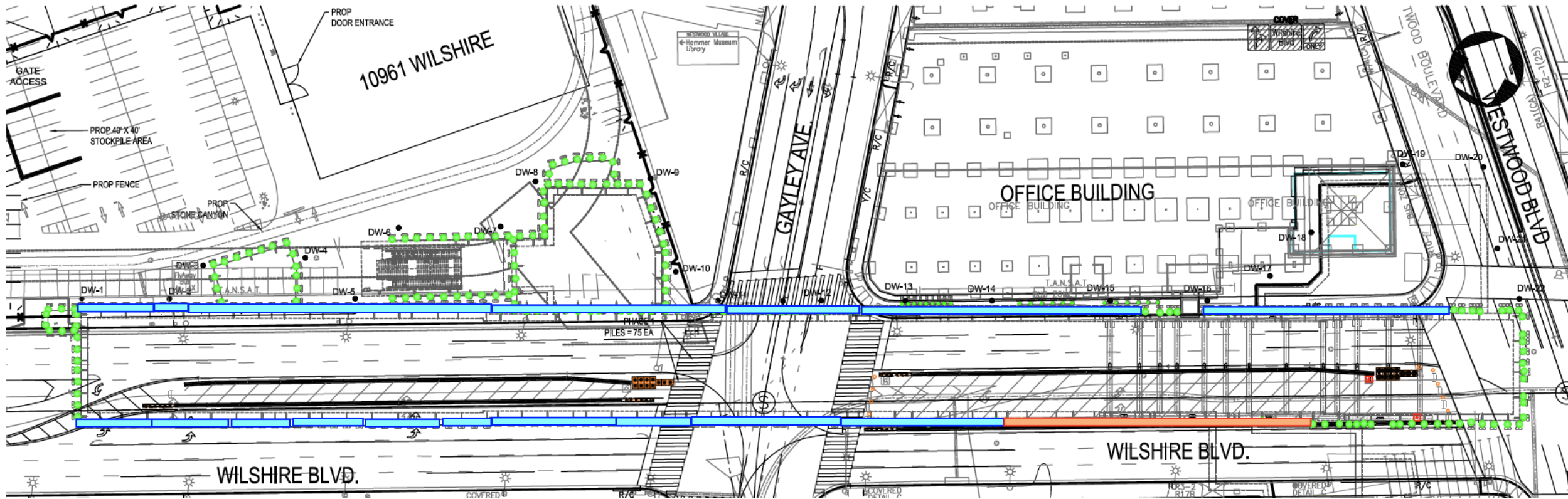
*Construction continues in UCLA Lot 36. Some work may overlap onto the sidewalk.*



# Piling Progress Westwood/UCLA Station

# Westwood/UCLA Station Piling

428 Piles Installed. 468 Total Piles for Station.



# Westwood/UCLA Piling Stage 2F- August 11

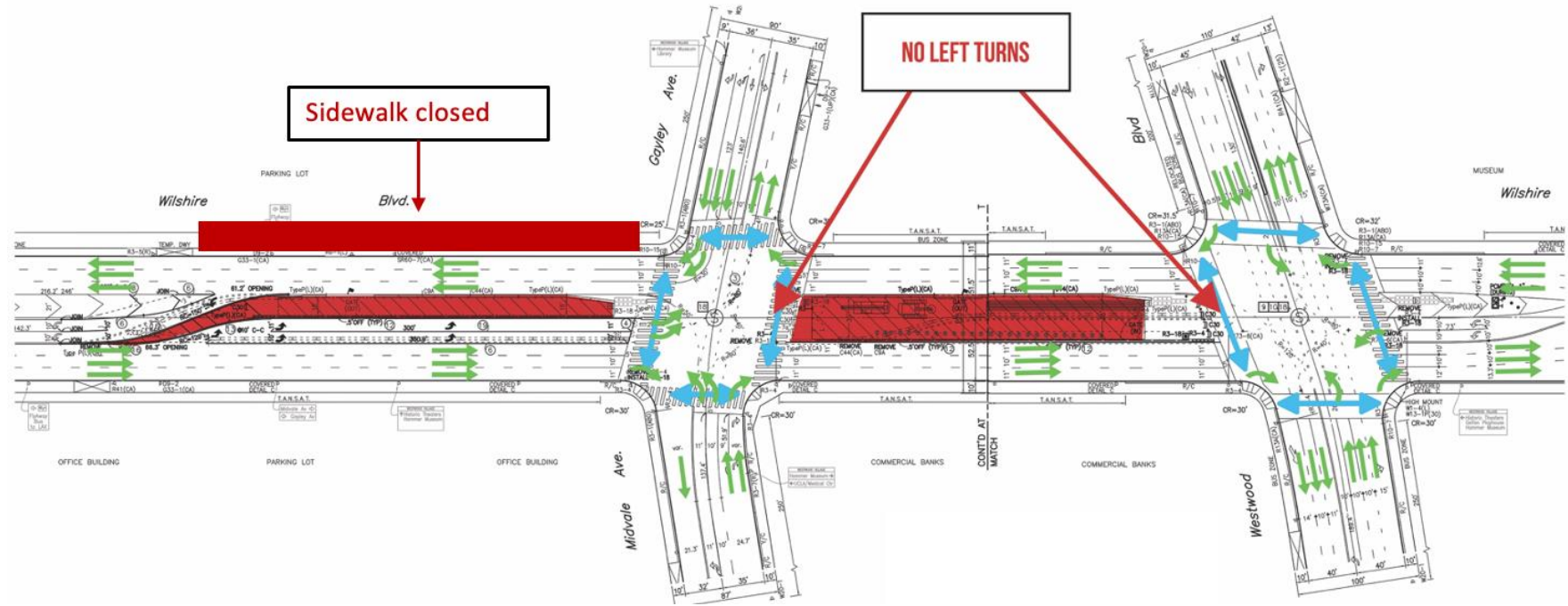
## Nightly:

Mon- Fri, 9pm to 6am

## Weekends:

Continuous, 9pm, Fri to 6am, Mon

**Restoration and traffic control switch in preparation of Decking to occur on a continuous weekend, Friday, August 12 through Monday, August 15, 2022, from 11 pm to 6am. This will require lane closures. One lane of traffic maintained in each direction.**



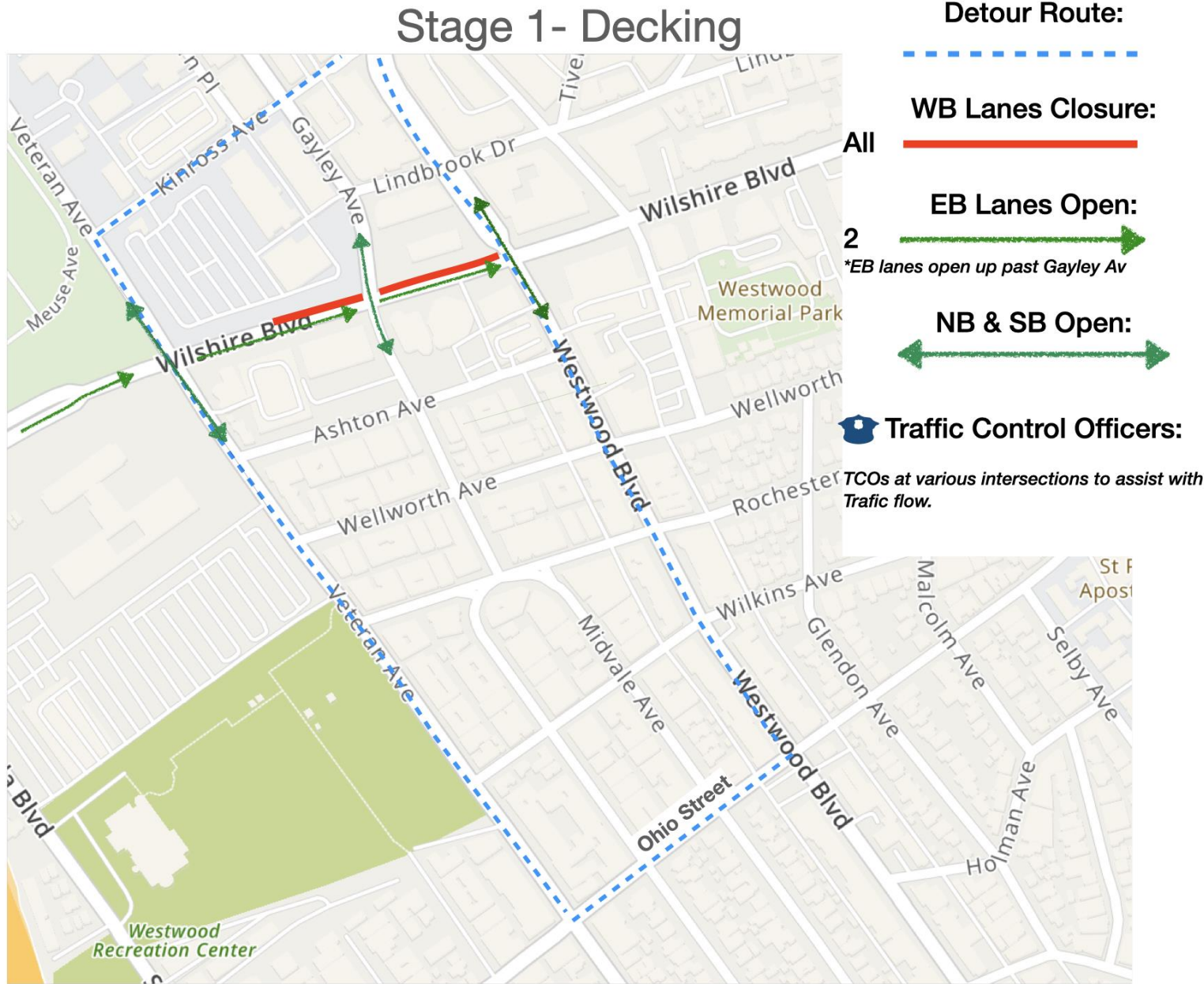
# Decking

- Decking is a process where the street is excavated from curb to curb at a depth of about 10 to 12 feet. The deck beams are installed over the piles that have been installed. The concrete precast panels are placed over the piles and create a temporary street surface. The panels get restriped for vehicular and pedestrian use.
- Temporary partial street closures will be implemented on Wilshire Bl. Traffic will be detoured around the construction work.
- Closures will occur on continuous weekends, Friday to Monday, 11 pm to 6am.
- Decking anticipated for 14 continuous weekends beginning Mid- August.



# Decking Traffic Control

- Tentative to start the weekend August 19 to continue for 13 consecutive weekends. No work on the labor day weekend.
- Eastbound Wilshire Bl traffic access maintained with two lanes of traffic.
- Westbound Wilshire Bl traffic detoured at Westwood either to Kinross Av or Ohio Av.
- Northbound and Southbound traffic maintained through Stage 1 for Westwood Bl, Veteran Av, and Gayley Av.



*\*Traffic control plans pending approval*

# Example of Decking on Bonsall Av.



# Holiday Moratorium Exemption

The holiday moratorium applies typically from November 25 through January 1. An exemption allows for a continuance with construction activities during the holiday season. TPOG will be requesting exemptions to allow construction to continue for both stations this year.

Coordination will occur with Council District 5, Council District 11, Bureau of Engineering (BOE) and the LA Department of Transportation (LADOT).

Continued work will ensure the construction schedule is maintained.

No work on Thanksgiving Day (November 24), Christmas Day (December 25) and New Year's Day (January 1st).

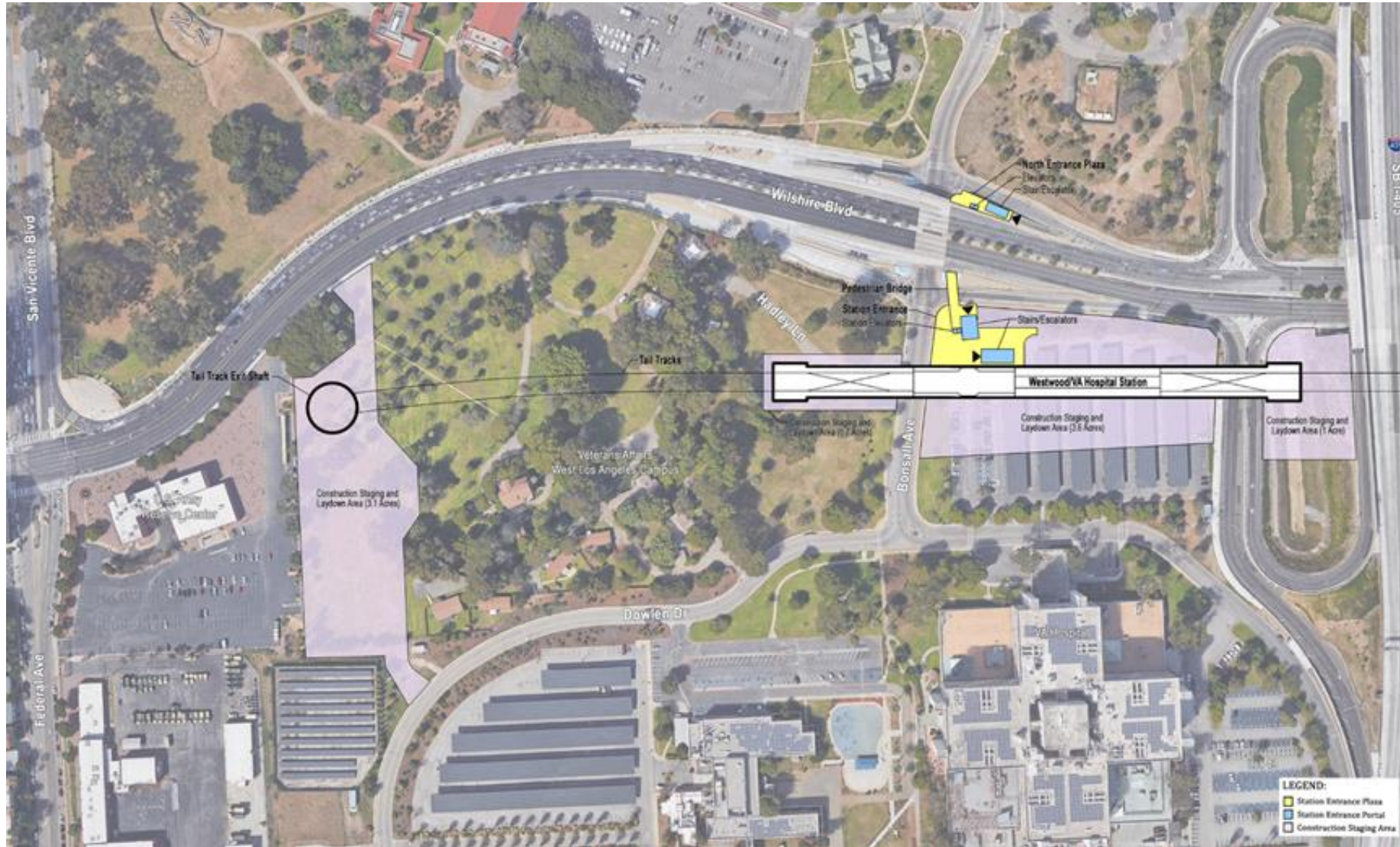
# Westwood/VA Hospital Station Rendering



# Westwood/VA Hospital Station Rendering (Bonsall Av)



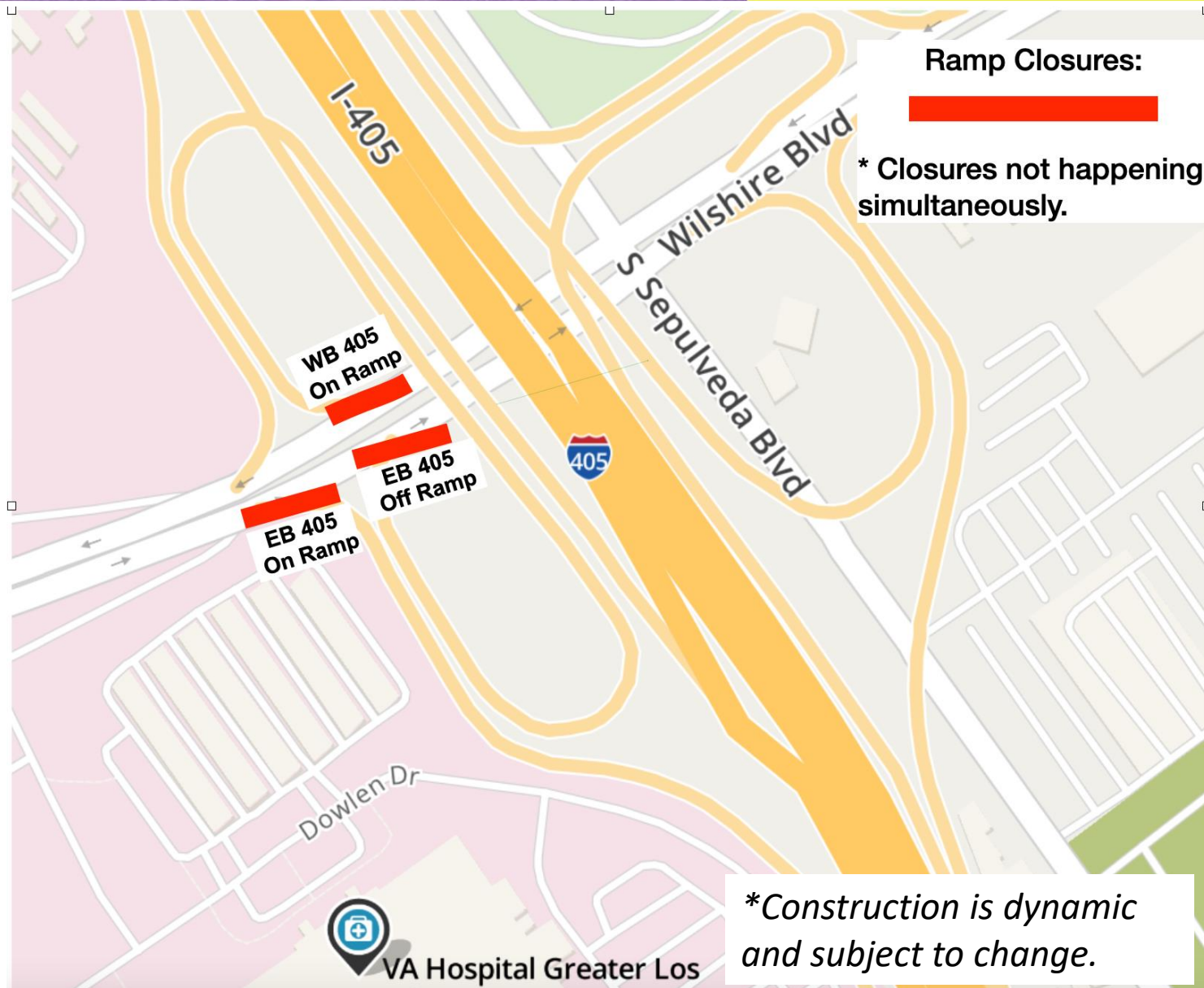
# Westwood/VA Hospital Station Box



# Instrumentation Installation: SB 405 Ramp Closures

Instrumentation installation around the VA Station is starting and will continue with more activity in August.

- The SB 405 On-Ramp will be closed from 11pm to 6am, August 3 to August 10, 2022.
- The SB 405 Off-Ramp will be closed from 9pm to 5am, August 10 to August 12, 2022.
- The WB 405 On-Ramp will be closed from 1am to 6am, August 12 to August 18, 2022.



# Westwood/VA Hospital Upcoming Waterline Work

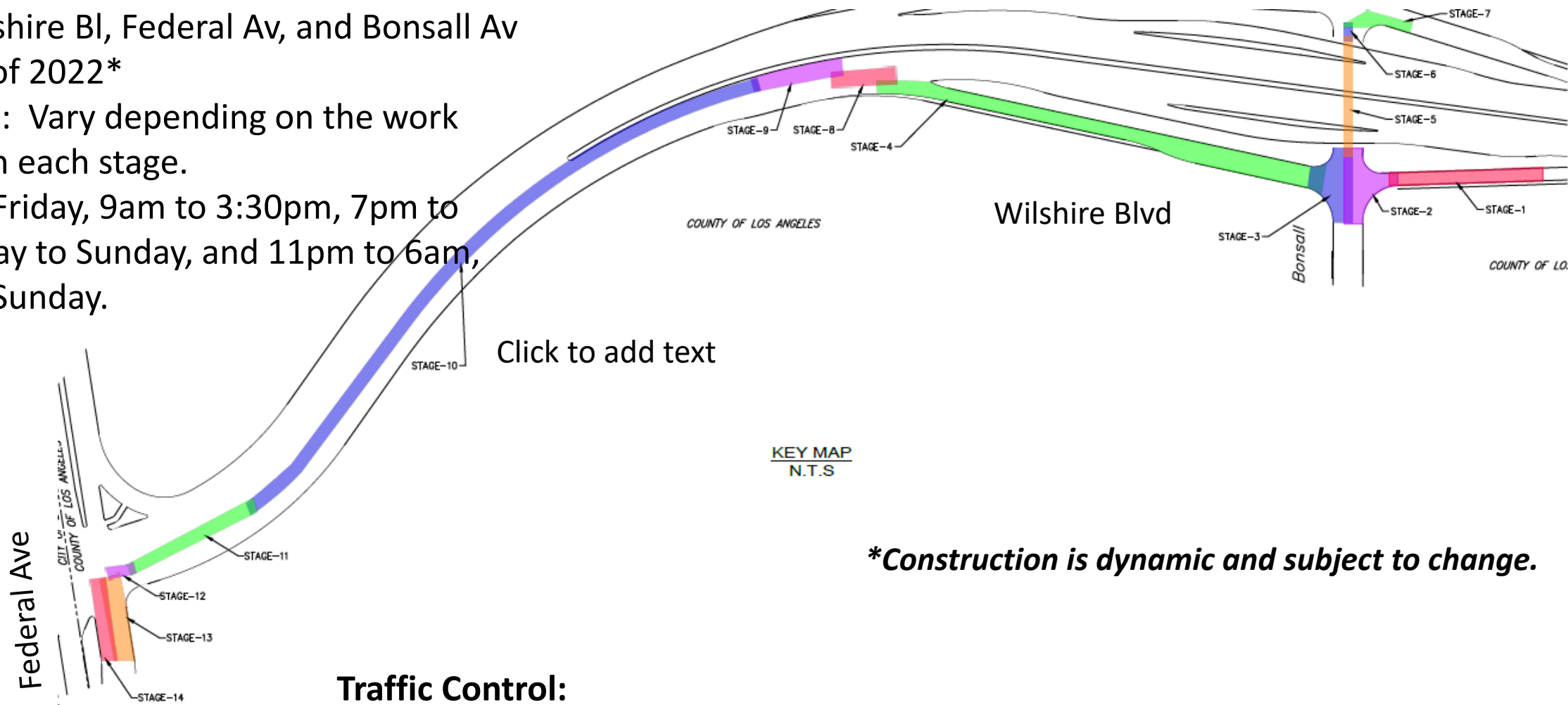


**Where:** Wilshire Bl, Federal Av, and Bonsall Av

**When:** Fall of 2022\*

**Work Hours:** Vary depending on the work scheduled in each stage.

Monday to Friday, 9am to 3:30pm, 7pm to 6am, Monday to Sunday, and 11pm to 6am, Monday to Sunday.



***\*Construction is dynamic and subject to change.***

### Traffic Control:

VA Hospital access will be detoured nightly along Sepulveda Bl and Santa Monica Bl to Sawtelle Bl and Dowlen Dr.



# Piece by Piece



# VA Mural Project History

**1995:** Artist and U.S. Navy veteran, Peter Stewart, with donated art materials and volunteers envisioned and created a tribute mural near the VA Greater Los Angeles Healthcare Center in Westwood. The specific area eventually selected was the underpass at the intersection of Bonsall Ave and Wilshire Blvd, north of the West LA VA Medical Center Campus.

Stewart died before the mural was fully completed. The mural remained unfinished, but it has become a treasured and honored landmark for veterans and VA staff.

**2012:** Metro's Purple Line Extension Final EIR/EIS in 2012 assumes that the mural could be protected in place during construction. However, subsequent studies show that removal of the northeast mural is necessary to build key Westwood/VA Medical station design elements. Attempting to rescue the mural is deemed unfeasible due to existing wall conditions.

# VA Murals to Remain in Place



# VA Legacy Art Mural

Project planners found that there is not sufficient space to accommodate the mural in its original location.

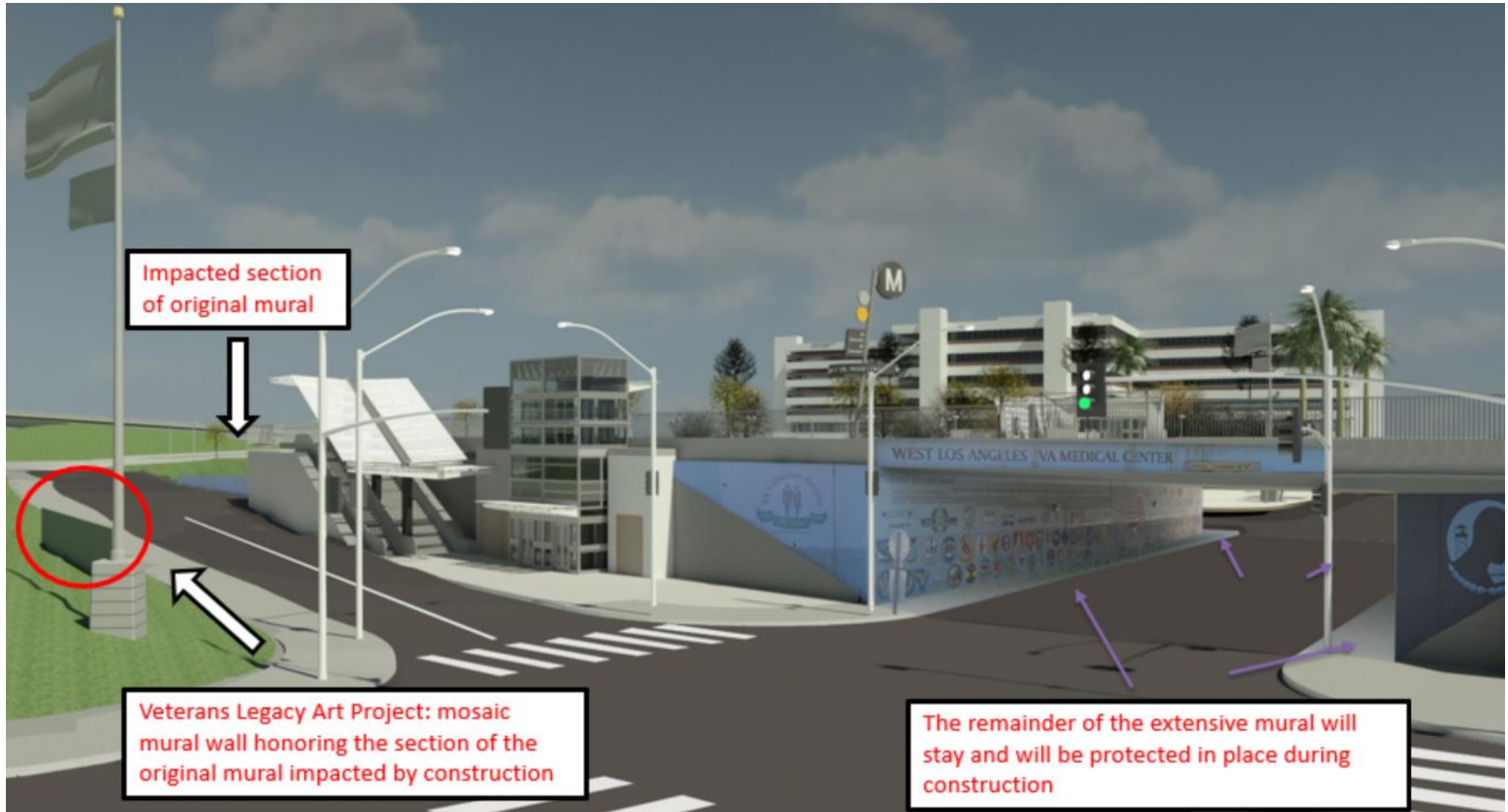
Therefore, plans were developed to decommission approximately 115 feet of the 23,000 square foot mural during the construction of the north entrance to the Westwood/VA Metro Station.

## Impacted Section of the Mural



Only portion of mural to be removed is located at the westbound Wilshire Blvd off-ramp to Bonsall Ave.

# VA Legacy Art Mural





May 2021



Circa 1993

**Shad Meshad, founder, National Veterans Foundation**

The background image shows a mural wall with several portraits of people. The wall is situated outdoors, with palm trees and a clear blue sky in the background. The mural appears to be a collection of individual portraits, possibly of veterans, arranged in a row. The wall is made of concrete or a similar material. In the foreground, there is a paved area, possibly a parking lot or a road, with some dry grass and a utility pole visible. The overall scene is bright and sunny.

## Engaging the Veteran Community

- To honor this section of the mural, Metro will engage the services of an arts organization to work with the veteran community on a Veterans Legacy Art Project.
- Veterans will participate throughout the design process that will lead to a mosaic mural to be installed across the street from the original.
- Final design will be determined with veteran involvement and input.
- Outreach and Engagement scheduled for 2024.
- Removal of mural wall scheduled for 2025.

# EAT SHOP PLAY



Eat Shop Play has highlighted local businesses along the Purple Line Extension project in Koreatown, Miracle Mile, Beverly Hills, Century City, and Westwood, especially eateries and specialty businesses operating pick-up and delivery during the past months.

The Eat Shop Play program continues supporting local businesses as construction progresses by promoting them through regular social media posts and newsletters.



metro.net/eatshopplay

# EAT SHOP PLAY

Support local businesses as  
we build more rail for LA.



# EAT SHOP PLAY

## KOREATOWN

### Kidsland

3700 Wilshire Bl # 125

Everything you need in baby supplies  
and strollers in Koreatown

Business hours:

Mon-Fri: 11am-5pm

[kidslandusa.com](http://kidslandusa.com)

866.462.7715



# EAT SHOP PLAY

## MIRACLE MILE

### Pho Saigon Pearl

519 S Fairfax Av

Delicious, fresh, and authentic  
Vietnamese cuisine in Miracle Mile

Business hours

Open Daily 12-9pm

[phosaigonpearl.com](http://phosaigonpearl.com)

(323)930-8935



# EAT SHOP PLAY

## BEVERLY HILLS

### Lazy Daisy

155 S Robertson Bl

Delicious homestyle breakfast,  
brunch, and lunch in Beverly Hills

Business hours

Mon - Fri: 7am - 5pm

Sat - Sun: 7am - 4pm

[lazydaisybeverlyhills.com](http://lazydaisybeverlyhills.com)

424.284.3387



# EAT SHOP PLAY

## CENTURY CITY

### Craft Los Angeles

10100 Constellation Bl

Seasonal farm-to-table New American  
food in Century City

Business hours

Tue – Fri 11:30am -1:30pm, 5-9:30pm

Saturday: 5-9:30pm

[www.craftlosangeles.com](http://www.craftlosangeles.com)

310.279.4180



# EAT SHOP PLAY

## WESTWOOD

### Toranj

10861 Lindbrook Dr

Authentic Persian and Iranian  
food, stews, and kebabs in  
Westwood

Business hours

Open Daily 11am-10pm

[toranjrestaurant.com](http://toranjrestaurant.com)

310.824.8188



# EAT SHOP PLAY



## Contact Us

- > For more information on Eat Shop Play visit [metro.net/eatshopplay](https://metro.net/eatshopplay)
- > Send an email to [eatshopplay@metro.net](mailto:eatshopplay@metro.net)



# Business Interruption Fund (BIF)



# Metro's Business Interruption Fund

## **BIF Information and Eligibility**

- > Financial assistance to small “mom & pop” businesses with 25 or fewer full-time employees directly impacted by Metro Rail construction along three project areas:
  - > Crenshaw/LAX Transit Project
  - > Purple Line Extension, Sections 1, 2 & 3
  - > Regional Connector Project, Little Tokyo area & 2nd/Broadway Segment\*
- > Businesses must be located immediately adjacent to the rail corridor and meet other eligibility requirements
- > Grant amounts are determined by business revenue loss directly related to period of Metro construction disruption
- > Businesses may receive up to \$50,000 per impact year



\*Segment eligibility based on full street closure with duration greater than six continuous months. Eligibility ended 6/30/17.

# Metro's Business Interruption Fund

Metro's Business Interruption Fund (BIF) is **accepting applications** for transit rail **construction impact** along the Crenshaw/LAX Transit Project, the Little Tokyo area of the Regional Connector and Sections 1, 2 and 3 of the Purple Line Extension **sustained from March 20, 2020, forward** (during the COVID-19 pandemic).

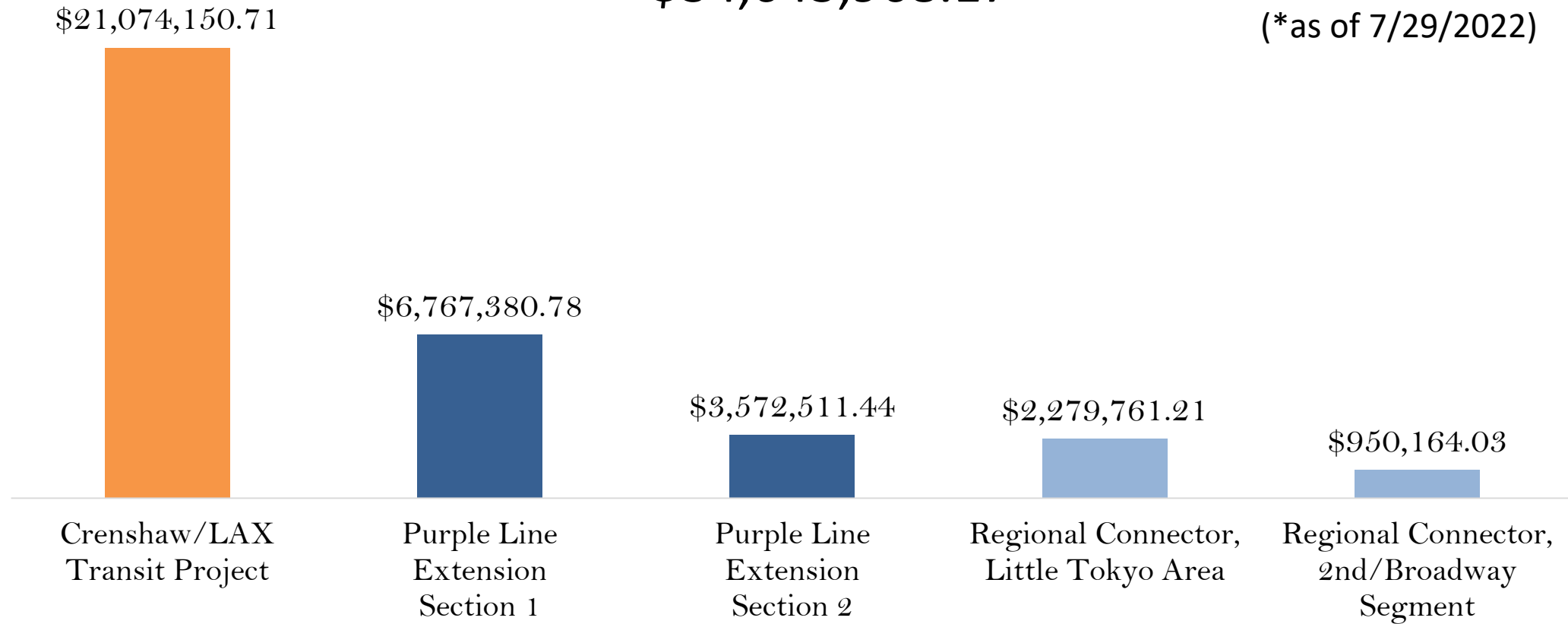
- **Small “mom and pop” businesses** that experienced transit rail construction impact during the COVID-19 pandemic **may be eligible**.
- Potentially eligible small business owners may *contact BIF Fund Administrator Pacific Coast Regional at 213.739.2999 x223 or Metro at [bif@metro.net](mailto:bif@metro.net)*.

**Metro does not cover revenue loss nor fixed operating expenses related to COVID-19 impacts.**

# Metro's Business Interruption Fund

Value of BIF Grants Awarded:  
\$34,643,968.17\*

(\*as of 7/29/2022)



**\*BIF Grants do not cover COVID-19 related impacts.**

# Stay in Touch

## Upcoming Meeting Dates

PLE Sections 1 & 2 La Cienega and Rodeo Stations Construction In-person Meeting will be held on September 7, 2022 at 6:00 PM at Beverly Hills City Hall 455 N Rexford Dr, Beverly Hills, CA 90210

**Save the Date: Next PLE 123 Meeting**  
**November 2, 2022 at 12 Noon Via Zoom**  
at <https://zoom.us/j/96626476708> . If unable to use a smartphone, please call 669.900.9128, and enter the webinar ID: 966 2647 6708



213.922.6934



purplelineext@metro.net



*metro.net/purple*



@purplelineext



facebook.com/purplelineext