

Welcome!

We will begin in a few moments.

Community Engagement Strategy Working Group Meeting #2
January 26, 2022



We're developing a new vision for the 710 corridor.

710 TASK FORCE



Metro



To listen to the meeting in another language:

Español:

- > *Llamada en español: 872.240.3412*
- > *Código de acceso: 171-762-397*

Khmer:

- > *សេចក្តីលម្អិត អំពីការហៅចូលប្រជុំ: 312.757.3121*
- > *លេខកូដចូលប្រជុំ: 361-254-365*

Tagalog:

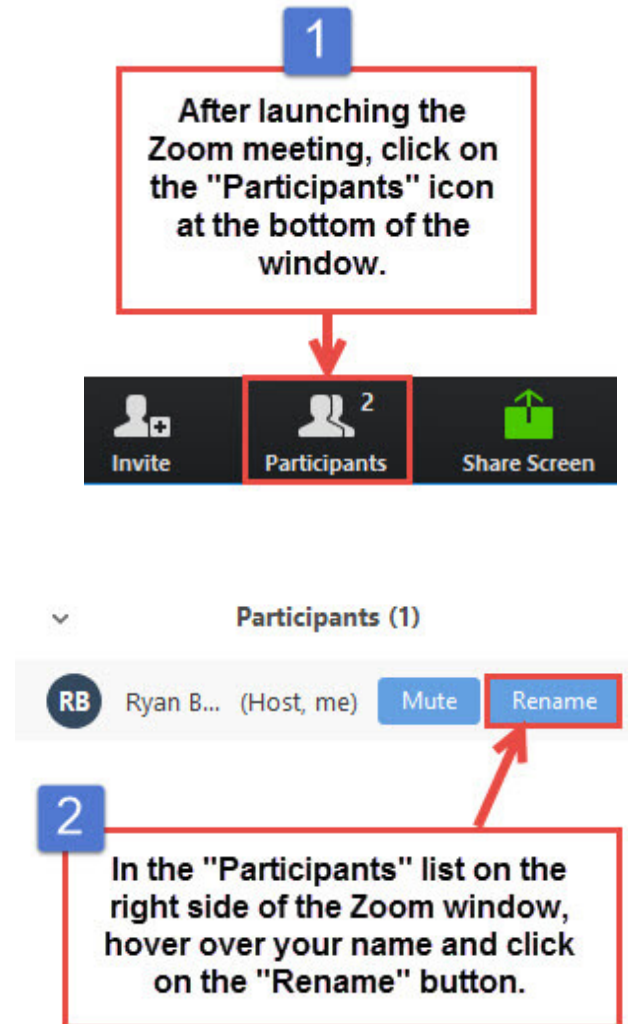
- > *Mga Detalye sa Call-in sa Pagpupulong: 224.501.3412*
- > *Kodigo: 752-551-413*

Tech Support - Google phone line/text

- > Phone: 323.609.3345
- > monitoring, translation support

Task Force Member Identification

Task Force Members, please change your Zoom screen name to include: Name and Organization Name



Raise Hand / *Levantarse la mano*



- > Click **Raise Hand** in your meeting controls or
- > **Press*9** on the phone line.
- > To lower your hand, click **Raise Hand** in your meeting controls.
- > Comments & questions can also be provided in writing by using the **Q&A** function.
- > The **Q&A** button is located on the control panel at the bottom of your screen.
- > If you're listening in on our Spanish, Khmer or Tagalog **phone** call-in lines and have a question or comment, please **press *6** to unmute yourself and let the interpreter know.

- > *Haga clic en “**Raise Hand**” o “**Levantarse la mano**” en los controles de la reunión o*
- > ***Presiona *9** en la línea telefónica.*
- > *Para bajar la mano, haga clic en “**Raise Hand**” o “**Levantarse la mano**” en los controles de la reunión.*
- > *Los comentarios y las preguntas también se pueden proporcionar por escrito mediante la función de **Q&A**.*
- > *El botón **Q&A** se encuentra en el panel de control en la parte inferior de la pantalla.*
- > *Si está escuchando nuestras líneas telefónicas en español, jemer o tagalo y tiene una pregunta o comentario, presione * 6 para abrir la línea y avisar al intérprete.*

Welcome!

Facilitator



Erika C.B. Morales
Partner, Morales + Morales Partners

Agenda

5:30 pm **Welcome, Introductions, Agenda Review, Meeting Objectives**

5:40 pm **Project Team Presentation**

- Overview: Community input on the Community Leadership Committee (CLC) and outstanding questions (15 minutes)

5:55 pm **Working Group Discussion #1: Outstanding Questions – Membership**

- Review and discussion of member qualifications, selection criteria, and total membership for the CLC (30 minutes)

6:25 pm **Project Team Presentation**

- Update: Notification process and proposal for the selection process (5 minutes)

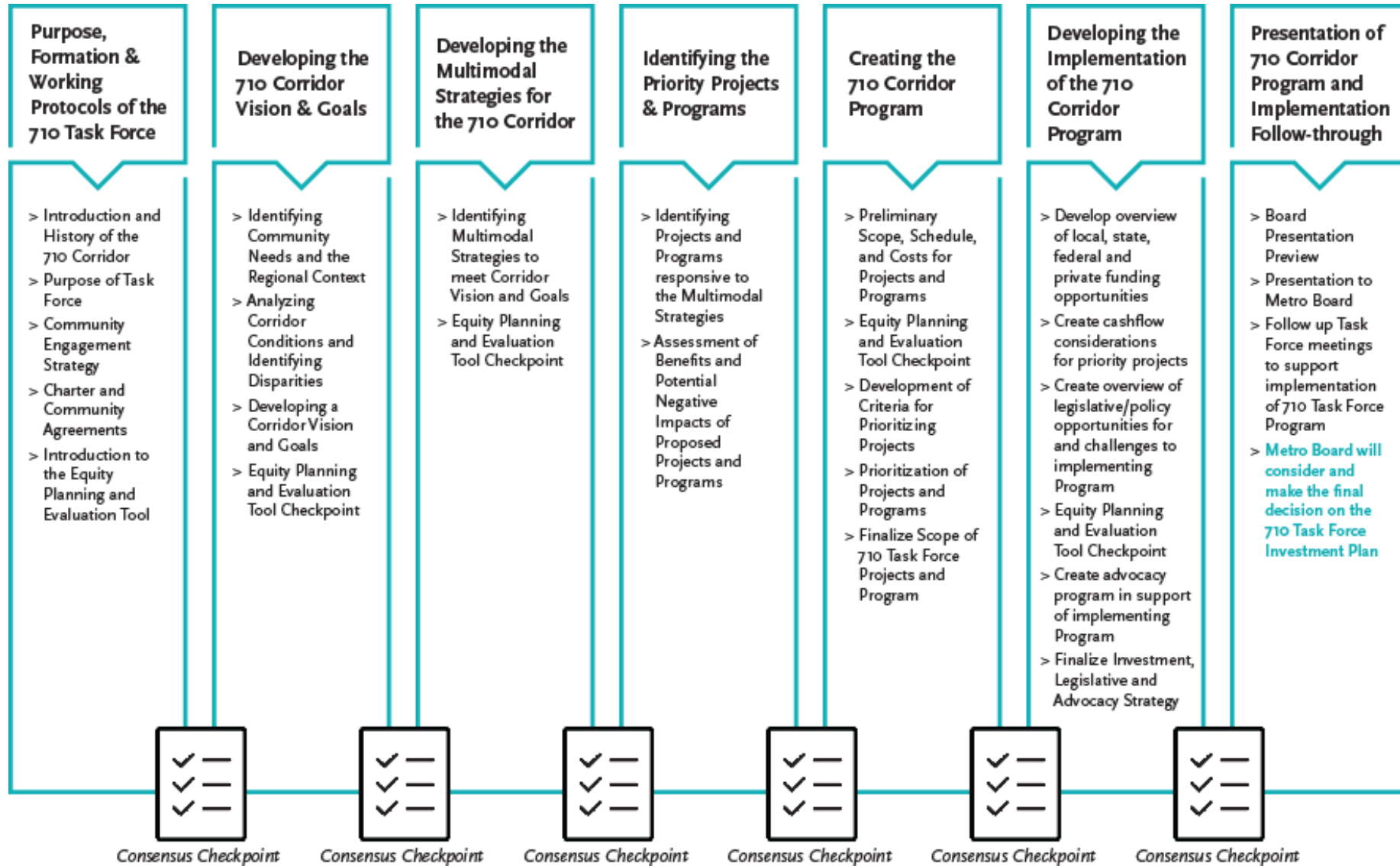
6:30 pm **Working Group Discussion #2: Outstanding Questions – Marketing and Selection Process**

- Review and discussion of ongoing marketing and selection process (20 minutes)

6:50 pm **Re-cap of discussion (5 minutes)**

6:55 pm **Closing Comments, Next Steps, and Thank You**

Charter Work Plan



Types of 710 Task Force Meetings

710 Task Force Meetings

- **Frequency:** Monthly (typically on the second Monday evening of the month)
- **Purpose:** Discuss and come to consensus on recommendations
- **Members:** Up to 50 representatives from a broad cross-section of stakeholders
- **Format:** Public Webinar (per Metro COVID restrictions)

Steering Committee Meetings

- **Frequency:** Monthly, two weeks before 710 Task Force Meetings
- **Purpose:** Plan meetings and support CLC and 710 Task Force
- **Members:** Three Existing Task Force members and Two CLC Members
- **Format:** Internal Teams or Zoom Meetings

Community Leadership Committee (CLC) Meetings

- **Frequency:** Monthly, one week before 710 Task Force Meetings
- **Purpose:** Advise on 710 Task Force proposals and recommendations
- **Members:** Up to 10 Residents and Workers from the Project Area
- **Format:** Internal Teams or Zoom Meetings

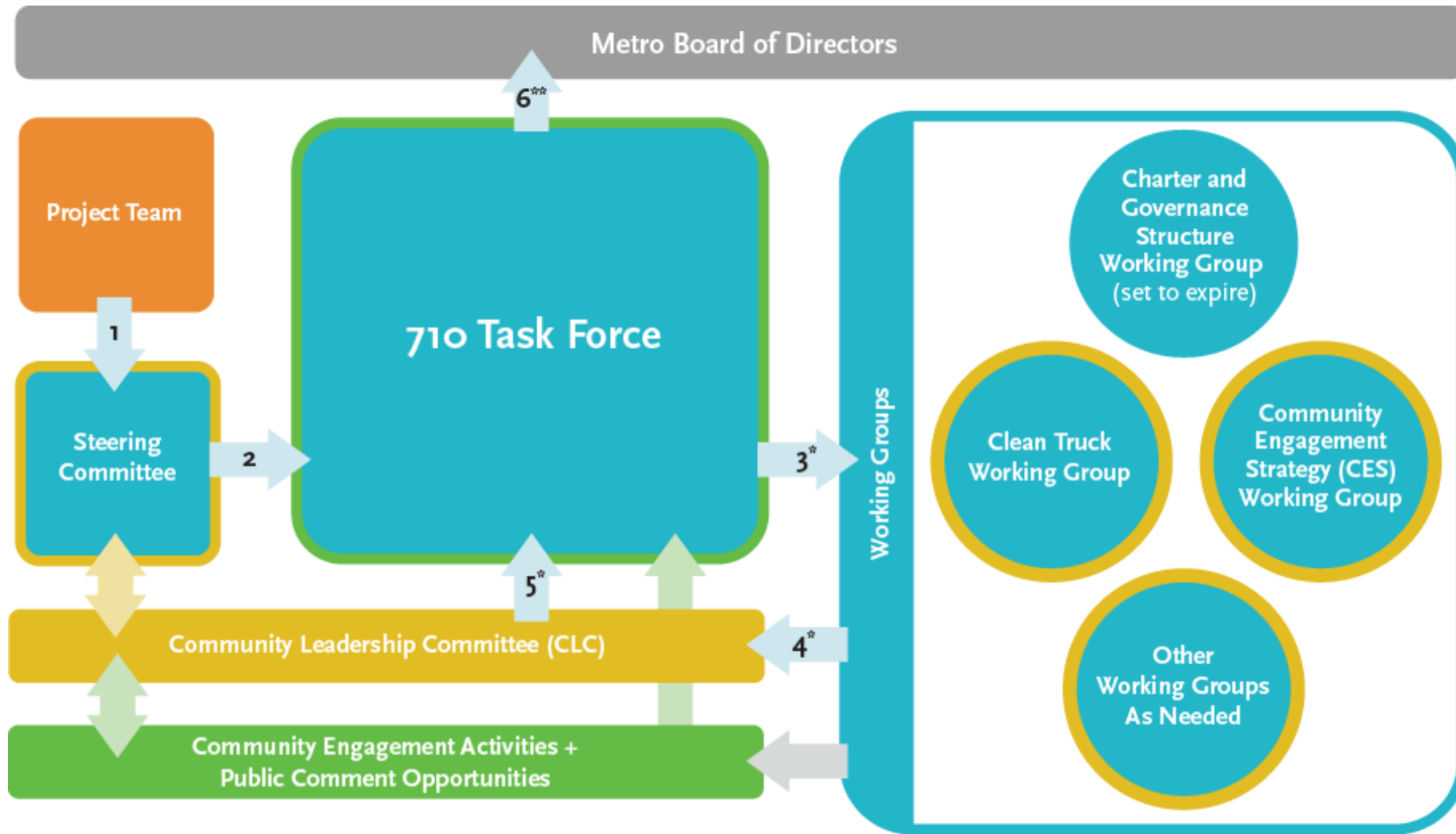
Task Force Working Group Meetings

- **Frequency:** As-needed
- **Purpose:** Research and analyze specific issues to develop proposals and recommendations for consideration by the 710 Task Force and CLC
- **Members:** Up to 20 710 Task Force Members and CLC Members
- **Format:** Internal Teams or Zoom Meetings

Listening Sessions and Other Community Meetings

- **Frequency:** Regularly scheduled throughout the process in alignment with project phases
- **Purpose:** Share updates and hear directly from community members
- **Audience:** Stakeholders along the I-710 South Corridor
- **Format:** To be determined

710 Task Force: Process for Each Work Plan Phase



*Steps 1-5 depict normal process for proposals. If needed, Steps 3-5 will be repeated.
 Refer to Decision-Making Process chart for an explanation of decision points.
 **Step 6: Metro Board will consider and make the final decision on the 710 Task Force Investment Plan.

LEGEND
 Yellow - CLC Participation
 Green - Public Participation

Project Team Presentation: Stakeholder Survey

- > Administered between December 21, 2021-January 24, 2022
- > 12 questions
 - 6 open-ended questions (CLC, ~~Executive Steering~~ Coordinating Committee*, Task Force, Decision-making process)
 - 6 closed-ended questions (Demographics, relation to the corridor)
- > 72 respondents
 - 79% non-Task Force members, 21% Task Force members**
 - 36% live in the corridor
 - 17% work in the corridor
 - 24% live and work in the corridor
 - 24% of the respondents neither live nor work in the corridor

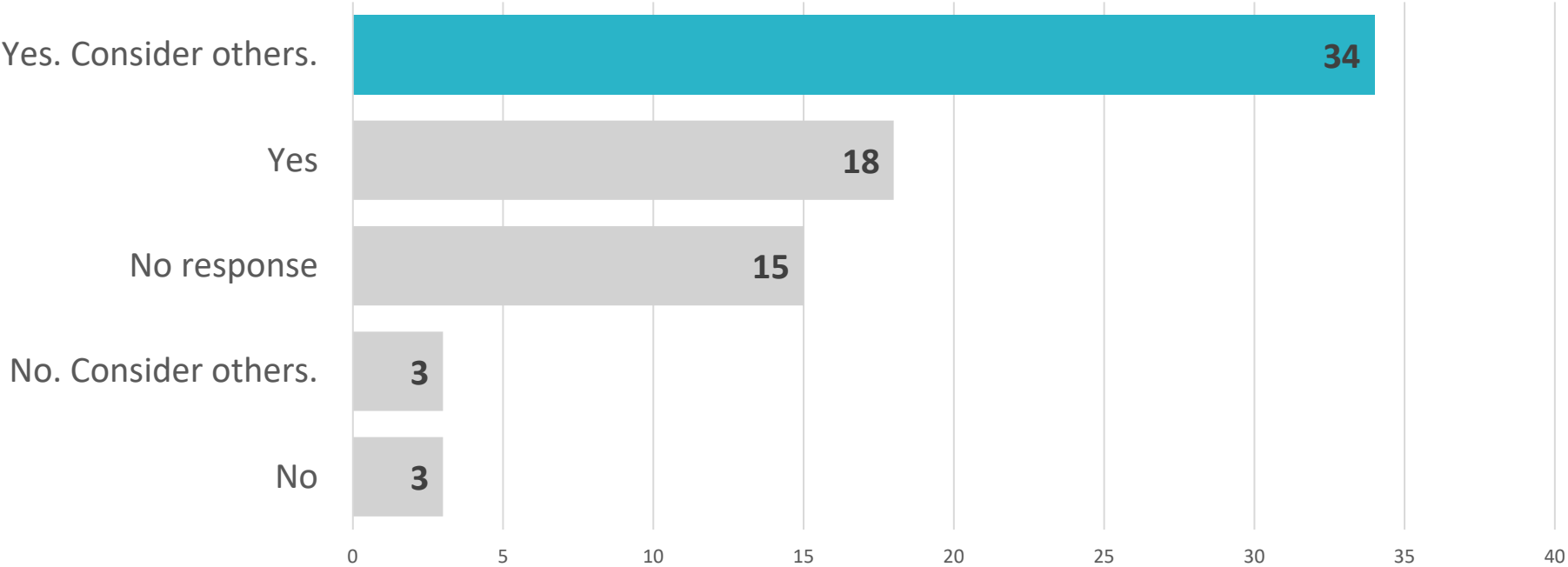
* Updated committee name based on input from Charter Working Group

** As defined by the survey respondents

Q1: CLC Qualifications

Q1: As currently proposed, the Community Leadership Committee (CLC) members must live or work along the I-710 South Corridor and not be a current member of the Task Force. It is also preferred that they be connected to community members along the I-710 and have first-hand knowledge of their history and concerns. Are these the right qualifications for the CLC? Should we consider others?

Yes. Consider others. appears most often.



Community Leadership Committee (CLC) Qualifications

Q1



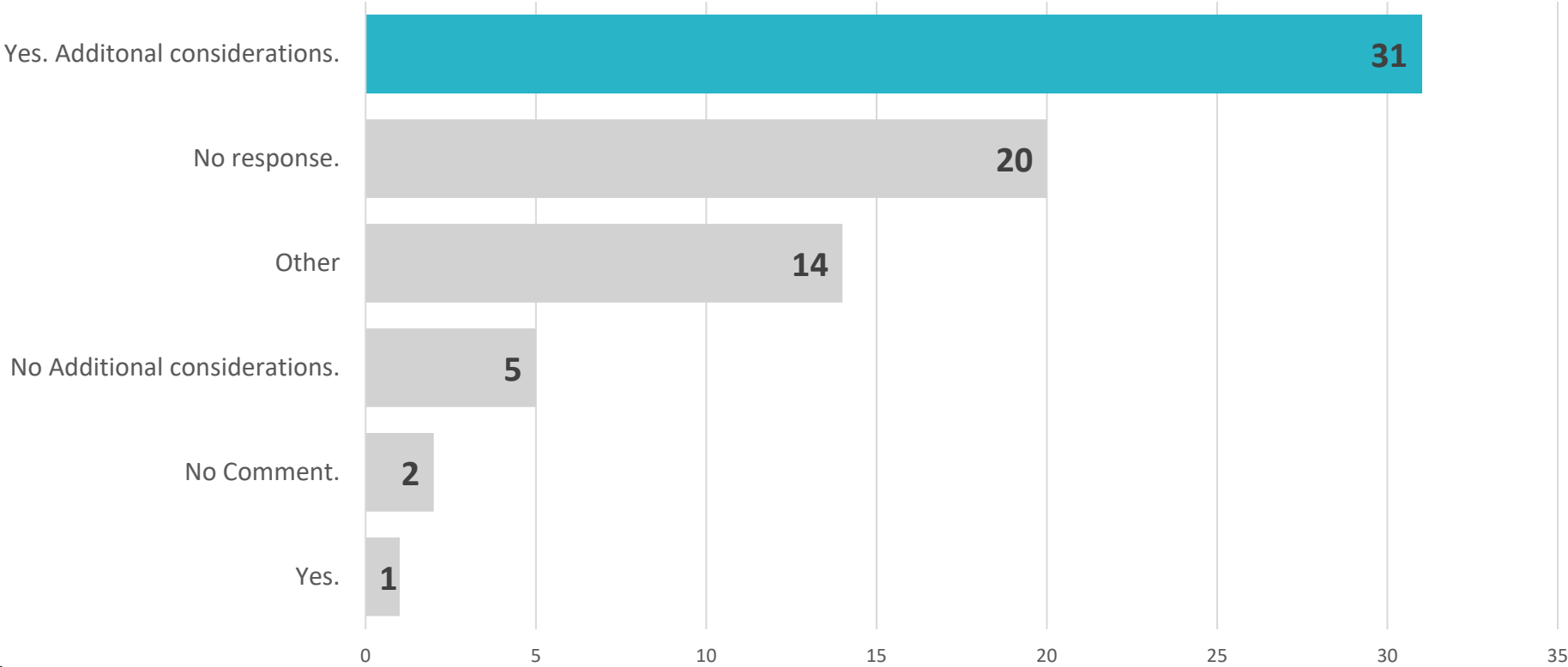
Besides diversity and geographic representation, what else should be considered in selecting Community Leadership Committee members?



Q5: Task Force Member Values and Attitudes

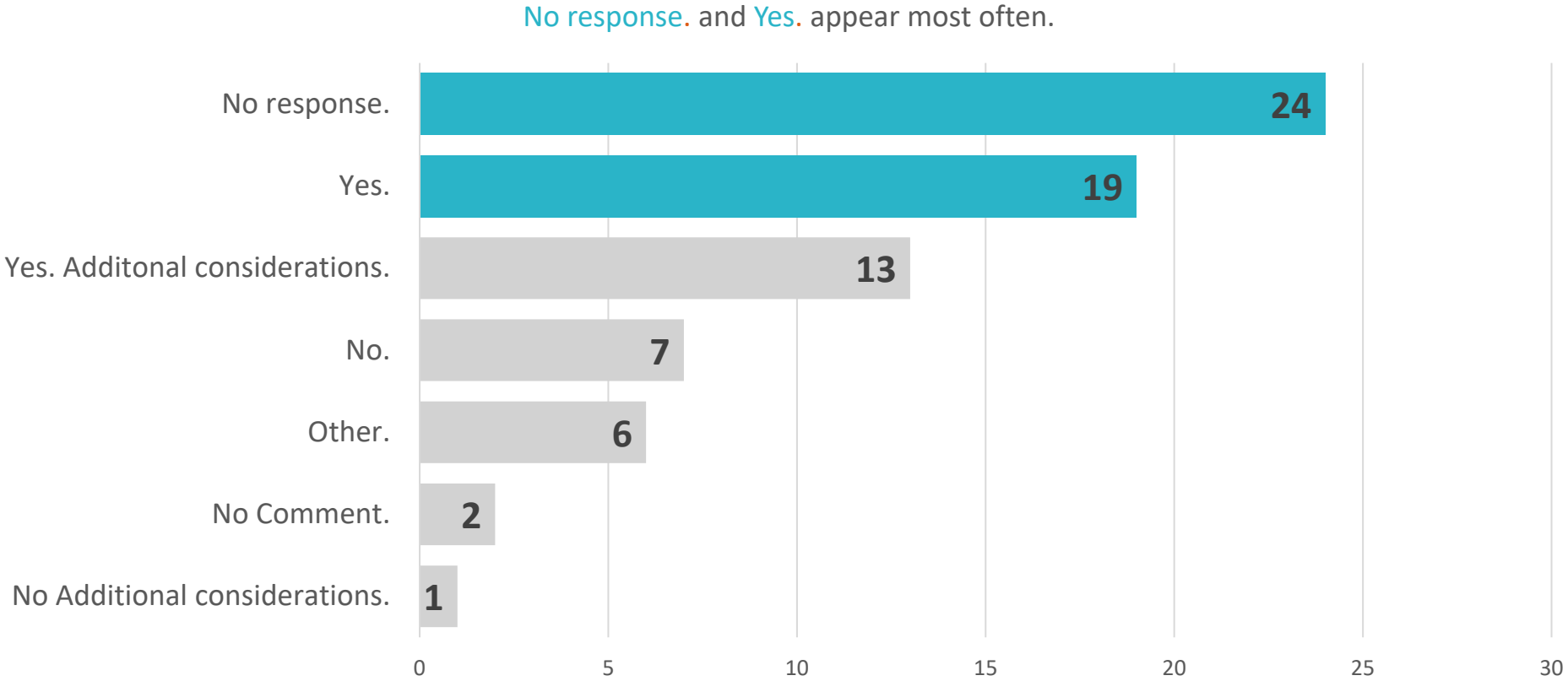
Q5: The Task Force is developing agreements for every member to commit to when engaging in the 710 Task Force decision-making process. Below are the currently proposed agreements. Would you add any values or attitudes for which 710 Task Force members should commit?*

Yes. Additional considerations. appears most often.



Q6: Decision-Making Steps

Q6: Do these decision-making steps allow sufficient discussion, debate, and consensus-building opportunities?



Do these decision-making steps allow sufficient discussion, debate, and consensus-building opportunities?



Working Group Discussion #1: Outstanding Questions – Membership

Community Leadership Committee: Application

Candidate Information Requested

- > Residence or work address (or major cross streets)
- > Demographic information (i.e., age, race/ethnicity, gender, sexual orientation, and primary language spoken)
- > Areas/topics of particular interest
- > Primary mode of travel (Driving alone, carpool, rail, bus, bike, paratransit, walking, or other)
- > Affiliation with CBOs, businesses, government agencies, or civic or non-profit organizations
- > Information on community involvement/engagement activities
- > Preferred meeting times (provide various 2-hour time slots)
- > Preferred language

Basic Qualifications

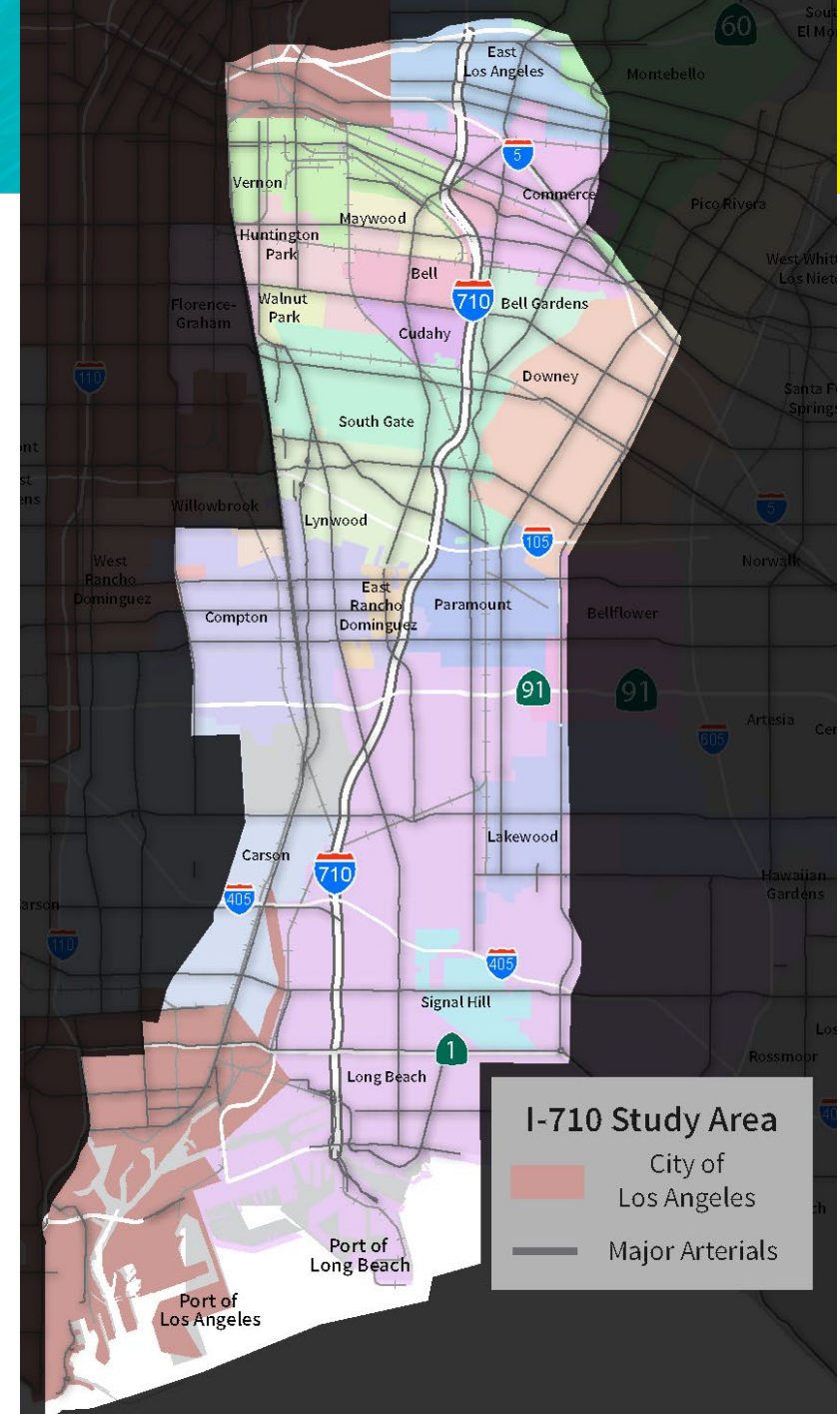
- > Must live or work within the I-710 South Corridor Study Area
- > Must not be a current 710 Task Force Member

Preferred Qualifications

- > Candidates that can demonstrate first-hand knowledge of community issues, history, and concerns
- > Candidates that are engaged and connected to broader community networks and engagement channels

I-710 South Corridor Study Area

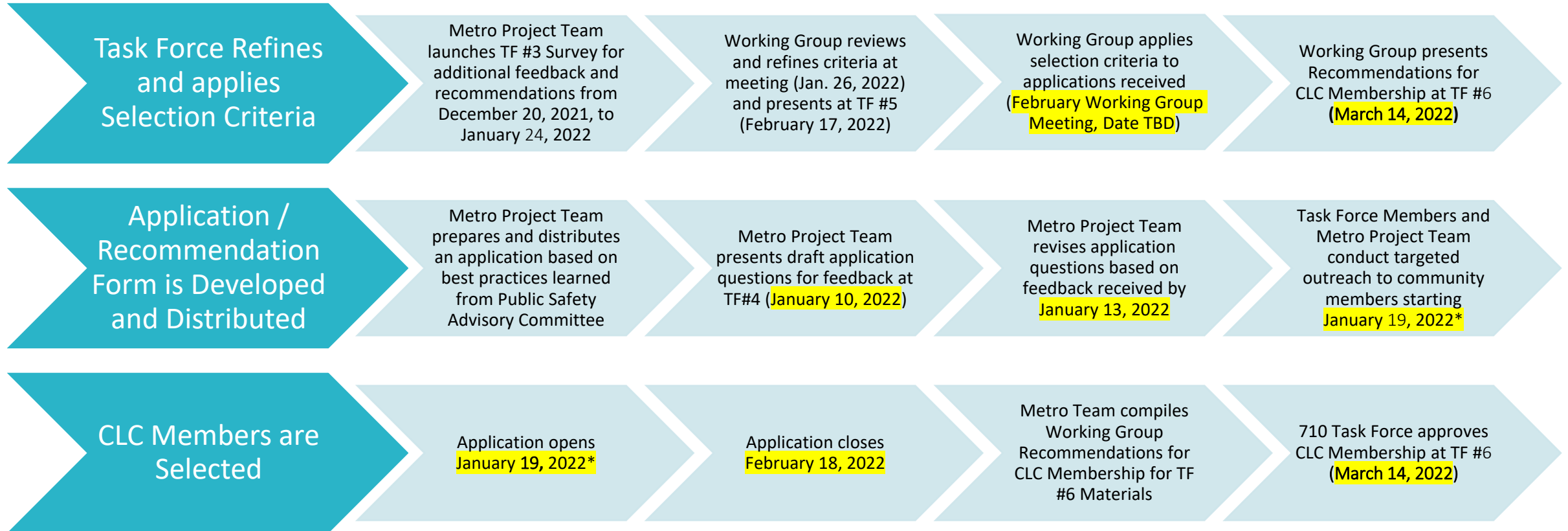
- > The I-710 South Corridor Study Area includes many jurisdictions and unincorporated communities.
- > While the map shows the immediate cities and neighboring jurisdictions, the I-710 South Corridor plays a critical role in the region's goods movement and mobility strategies. Many people live in these neighborhoods and many use the I-710 and connecting roads and highways to get to and from their homes, places of work, schools, and other key destinations.



Working Group Discussion #2: Outstanding Questions – Marketing and Selection Process

Community Leadership Committee: Status Update

We are moving three key areas of work forward for the CLC Formation:



* Date was previously January 18, 2022

Guiding Questions for Working Group Meeting

- > How else can we market the CLC application between now and the deadline of February 18?

Re-cap of Discussion

Closing Comments, Next Steps, Thank you

Can't attend the meeting? Reach out to us!



Michael Cano, *Deputy Executive Officer,*
Countywide Planning & Development
Metro

One Gateway Plaza, MS 99-13-1
Los Angeles, CA 90012



213.922.4710



710corridor@metro.net



metro.net/projects/i-710-corridor



@metrolosangeles



losangelesmetro