

Next stop: more rail.

CRENSHAW/LAX TRANSIT PROJECT



Community Leadership Council
Quarterly Meeting

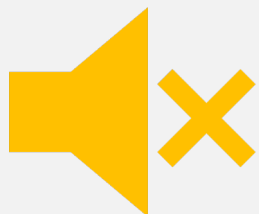
January 13, 2022 | 6 PM



Using Zoom & Submitting Questions



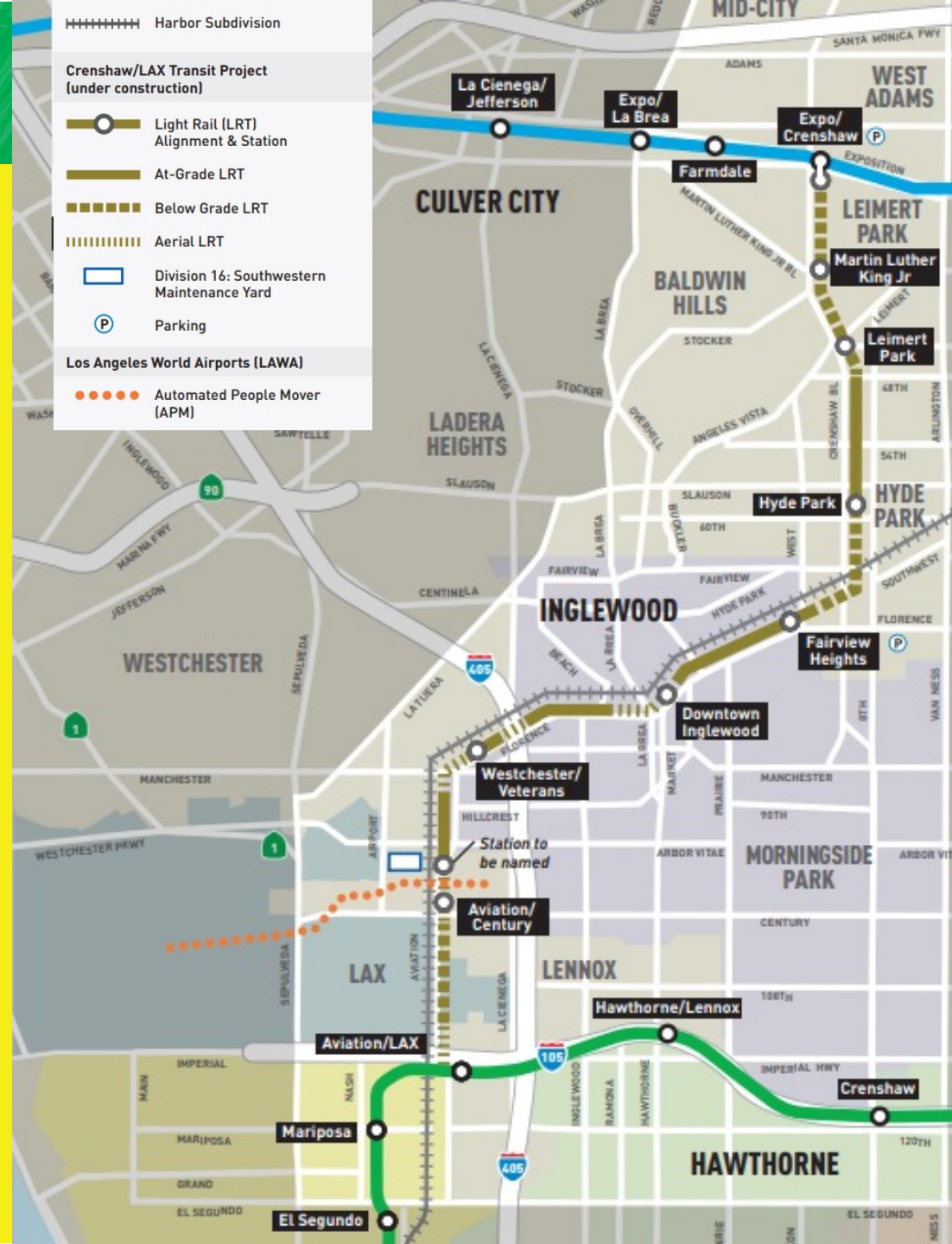
This meeting is being recorded. Video file will be posted on our web site at metro.net/crenshaw



Public video and mics are disabled. We cannot hear you or see you.



Please ask questions and submit comments via the Q&A feature.



Discounted Fares/LIFE Program

Fare collection and front door boarding resumes on buses on Jan. 10, 2022

Discounted Prices

- **6 months of half price passes for all riders!**
- 1-Day, 7-Day and 30-Day passes at half-price savings that riders can start using on Jan. 10.
\$3.50 for a day pass, \$12.50 for a weekly pass and \$50 for a 30-day pass if you are not enrolled in a discounted program.
- The fares will be available on TAP vending machines, taptogo.net and at Metro Customer Centers for purchase until July 20, 2022.

Low-Income Fare Is Easy (LIFE) Program

- 6 Months of discounted LIFE fares:
New LIFE riders will get 90 days of free rides starting January 10, 2022, when fare collection restarts.
\$26 for a 30-day pass (regularly \$76)
\$6.50 for a 7-day pass (regularly \$19.50).
To Sign up for the LIFE Program visit www.metro.net/riding/life/

Take Metro's Budget Survey



Crenshaw/LAX Neighborhood Student Art Contest

DEADLINE EXTENDED TO: April 8, 2022

Calling all high school students with roots in Crenshaw District, Inglewood, Westchester, and adjacent areas! Metro invites students grades 9-12 to submit artwork that celebrates their communities along the upcoming Crenshaw/LAX Transit Project!

Metro will produce commemorative pins inspired by the winning artworks of eight student artists. Each pin will represent one of eight future Crenshaw/LAX Transit Project stations.

Selected artists will receive \$500 compensation for their work. This is a great opportunity for young artists and future creatives in the area to be recognized!

Contest info & entry form
please contact:
Sasha Ali, AliS@metro.net



Metro[®]



Metro Rail



Welcome, thank you for joining us!

5 min	Welcome	Arna Fulcher , CLC Co-Chair
5 min	Introductions, Metro News & Project Overview	Ginny Brideau , Community Relations Manager
15 min	CLAX Project Update	Raymond Acevedo , Community Relations Officer, Southern Segment Ron Macias , Principal Community Relations Officer, Northern Segment
30 min	Metro Photo Enforcement Program / Q&A	Raymond Acevedo , Community Relations Officer
10 min	Business Support Programs	Jessica Spearman , Principal Transportation Planner Sidney Urmancheev , Transportation Associate
5 min	Eat Shop Play Program	Jesus Galeno , Transportation Associate
20 min	Moderation / Q&A	Ginny Brideau , Community Relations Manager Abdul Zohbi , Systems Safety Manager Ed Tiedje , Redflex Traffic Scott Greene , Transportation Planning Manager, Service Planning and Scheduling

Project Overview

Walsh Shea Corridor Constructors (WSCC)

Main Line & Stations Contractor

- 8.5-mile light-rail servicing the cities of Los Angeles, Inglewood, and El Segundo
- 8 new stations:
 - 3 underground
 - 4 at-grade
 - 1 aerial
- Project has reached over 99% completion



Project Overview

- When WSCC completes the project, Metro will require five to six months of additional testing, certification, and operator training.
- Due to construction on the AMC station, the Crenshaw/LAX rail will open with an initial operating segment from the Expo/Crenshaw Station to the Westchester/Veterans Station and back.
- A bus shuttle will be in service to accommodate passenger trips from the Westchester/Veterans Station connecting to the C Line (Green) Aviation/LAX Station.



Aviation/Century Station

Aviation Bl at Century Bl



Station platform and signage



Applying signage for the grand pylon



Mounting handrailing on the inside of the stairways

Westchester/Veterans Station

Florence Av at Hindry Av



Station platform with installed porcelain enamel steel artwork and signage



Installed turnstiles at platform entrance



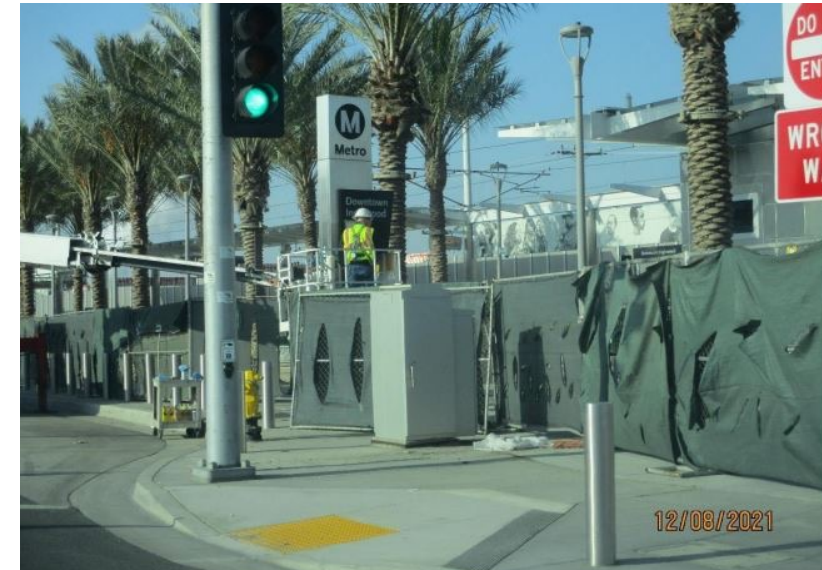
Platform entrance and TVM

Downtown Inglewood Station

Florence Av at La Brea Av to Hillcrest Bl



Station platform installed signage and yellow tactile pavers



Applying signage for the grand pylon



Entrance to station platform

Fairview Height Station

West BI at Redondo BI



Installed bike locker and rack, blue light emergency phone, and steel bollards



Station platform entrance



Station platform and installed signage and benches

Hyde Park Segment Tunnel / Cut and Cover

Crenshaw BI between 59th St to 67th St

Construction Status

- Final street restoration was completed
- Outstanding work:
 - Additional minor utility work
 - Tree Planting



Landscaping at train portal near Crenshaw BI and 67th St



Hyde Park Station

Crenshaw Bl and Slauson Av



Station guardrails and walkway from Slauson Av



Station platform and tactile pavers



Installed TVM and map casings

Underground Station Construction

Underground Station Construction

- Leimert Park Station
- Martin Luther King Jr. Station
- Expo/Crenshaw Station

Ongoing Construction Activities

- Electrical and communications systems work
- Station plaza features installation



Welding handrail return to staircase at the main entrance of the Leimert Park Station

Leimert Park Station

Crenshaw Bl and Vernon Av

Dec 16, 2021 at 9:32:58 AM



Installing handrails along the exterior sides of escalators between the intermediate landing and concourse



Installing drop ceiling trim panels around the smoke screen glass perimeter



Cleaning and polishing the grand pylon sign at the plaza

Martin Luther King Jr Station

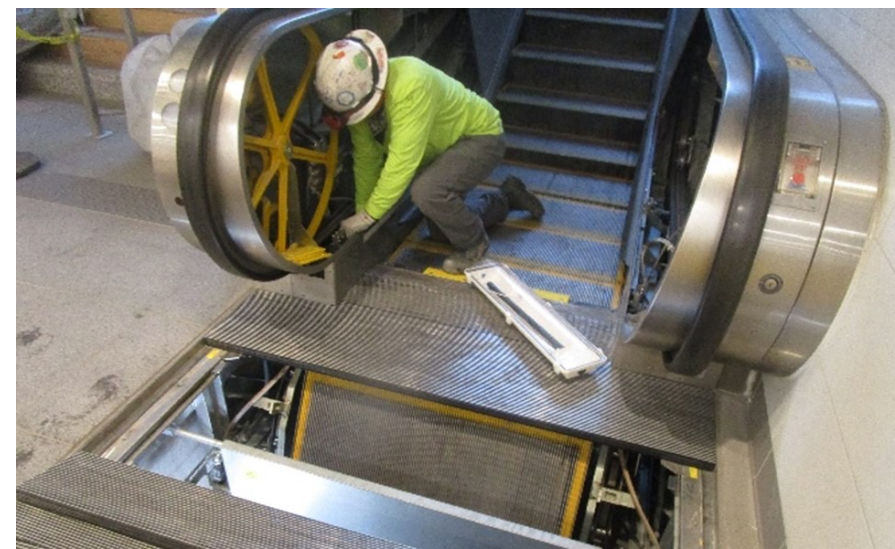
Crenshaw Bl and Martin Luther King Jr Bl



Welding handrails along the exterior sides of the escalators at the main entrance



Grouting tile for the fresh air intake shaft at the plaza



Installed riser demarcation LED lighting inside the landing pit of the escalators

Martin Luther King Jr Station Site

Crenshaw Bl between MLK Bl and Stocker St



Excavating in preparation for tree placement along southbound Crenshaw Blvd between MLK Bl and Stocker St

Expo/Crenshaw Station

Exposition BI and Crenshaw BI



Installing stainless-steel cladding trim plates to the interior guardrail posts around the perimeter of escalator



Performing operation testing of escalator at the main entrance

Expo/Crenshaw Station Site

Between Exposition Bl and Obama Bl



Cutting asphalt for loop detection on northbound Crenshaw Bl between Exposition Bl and Obama Bl

Street Restoration

Street Restoration Work being performed by the City of Los Angeles

- Roadway resurfacing of areas between the underground stations
- On-street public parking impacts
- Ongoing lane closures
- Pedestrian access occasionally restricted and rerouted
- Temporary bus stop and route relocations



City of LA crews performing road restoration on Crenshaw Bl between MLK Bl and Coliseum St



CLAX – TESTING PROGRESS

Local Field Acceptance Test (LFAT)

As of December 28th, 2021, LFAT Completion: 78%

System Integration Test (SIT)

As of December 28th, 2021, SIT Completion: 76%

Grade Crossing Approval

As of December 28th, 2021, Completion: 6%



Century / Aviation – G-TEL ADA Compliance



EXPO Station – Emergency Ventilation SIT



MLK Station – Fire Alarm LFAT



Leimert Park Station – Escalator SIT

Systems Testing



EBPS Generator Live Load Testing

Remaining Work Walks

Completed 83% of all the remaining systems walks:

- Traction Power: 90%
- Over-Head Catenary System: 80%
- Train Control: 95%
- Electrical: 70%
- Mechanical and Plumbing: 90%
- Communications: 90%
- Fire Life Safety: 85%
- Duct bank: 70%

* Percentages of completion provided are subject to final verification.



Resolving remaining work items for switches



Remaining items Remedial work for TPSS #2 Vault



Resolving remaining work items for TPSS

Metro Photo Enforcement Program

Crenshaw Bl between 48th St and 59th St

- Cameras are installed at the at-grade train crossings along Crenshaw Bl between 48th St and 59th St to monitor Left-turns.
- Aims to improve
 - vehicular & pedestrian safety
 - mitigate potential train and auto accidents
- The program has been implemented on the A Line (Blue), L Line (Gold), G Line (Orange), and E Line (Expo)
- The program will be installed on all future light rail lines where dedicated left turn lanes exist



Left turn cameras on Crenshaw between 48th St and 59th St



Metro Photo Enforcement Program

Crenshaw Bl between 48th St and 59th St

- Do all camera flashes result in a warning or citation?
 - No, each incident is checked to determine if the images and video confirm a vehicle has entered the intersection on a red light
- Why do the cameras flash even if a vehicle is not in the intersection?
 - Remote testing activities and maintenance of the system
- How does Metro manage the System?
 - Metro contractor, Redflex Group has assigned Field Service Technicians working five days a week to maintain the system and trouble shoot any issues that may arise.
 - Remote monitoring



Traffic Enforcement Camera and Warning Sign at the Metro L (Gold) Line



Metro Photo Enforcement Program

Crenshaw Bl between 48th St and 59th St

- **September 1, 2021:** Initial Outreach efforts began
 - Construction Notices delivered door-to-door
 - Paid Print and Radio Media
 - Project Stakeholder E-newsletter
 - Social Media including NextDoor, Facebook, website
 - Community Meetings and Key Stakeholder Briefings
- **October 1, 2021:** one-month warning period began
 - After receiving community input, the warning period was extended until after a second awareness campaign (date TBA).
 - Motorists who operate vehicles in an illegal manner began receiving Warning Letters.
 - Citations on the Metro program begin at \$100 plus penalties and assessments

Traffic citations will be issued after the conclusion of the second awareness campaign (date TBA)

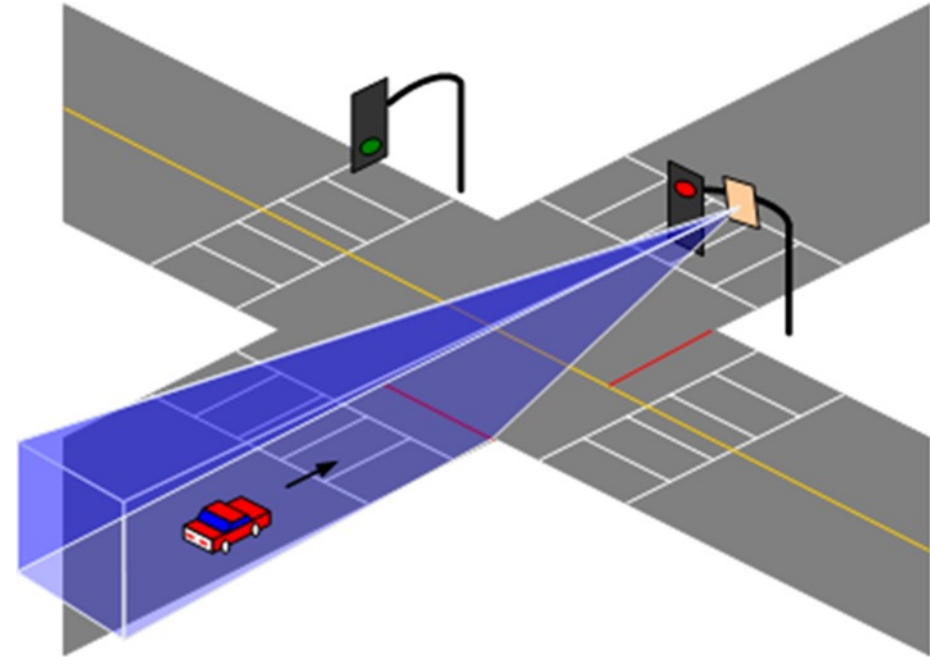


The image shows a sample of a Traffic Violation Warning Notice from the Los Angeles County Sheriff's Department Transit Services Bureau. The notice is addressed to MARK 56FGHFF TWAIN at 5651 W TALAVI BLVD, GLENDALE AZ 85306. It explains the Metro Photo Enforcement Program, which uses automated cameras to monitor and enforce violations at Metro transit system crossings. The notice states that the violation was photographed on 10/20/2021 at 11:18 by the automated traffic enforcement camera system. The vehicle with license plate 56FGHFF was registered in the name of the recipient and was photographed at 1.53 seconds after the red light was activated at the intersection of Location description for LAM-CRS4-01 on the Crenshaw Line Crossing. The notice emphasizes that this is a warning only and does not require a response from the recipient. It also provides contact information for the Traffic Violations Bureau toll free at (866) 527-9470 Monday through Friday between the hours of 8:00 a.m. and 5:00 p.m., excluding holidays. The notice concludes with the statement 'THIS IS NOT A CITATION'.

Sample Warning Enforcement Letter

HOW IT WORKS

The system's radar tracks vehicles as they approach an intersection when the enforced lane has a red signal.



HOW IT WORKS

If the vehicle is traveling at 7mph or greater and the light is red, an image is taken of the vehicle prior to crossing the violation line.

Location: LAM-CR54-03 SB to EB Crenshaw at 54th St Ver7.11.12.2
Date: Friday 29 October 2021 Time: 13:02:19 Event: 10 SA
Lane: 1 Vehicle Speed: 8 MPH Time into phase: 115.60 Elapsed Time: 0.00
Amber:3.60



HOW IT WORKS

A second image is taken after the vehicle crosses the violation line.

Location: LAM-CR54-03 SB to EB Crenshaw at 54th St Ver7.11.12.2
Date: Friday 29 October 2021 Time: 13:02:21 Event: 10 SB
Lane: 1 Vehicle Speed: 8 MPH Time into phase: 117.49 Elapsed Time: 1.88
Amber:3.60



HOW IT WORKS

A third image is taken which is used to identify the driver as well as a 12 second video.



Metro Small Business Pilot Programs

Help small “mom and pop” businesses continue to thrive throughout construction and post construction

Metro Business Solution Center (BSC)

Metro Business Interruption Fund (BIF)



Business Solution Center Crenshaw/LAX Transit Project

BSC Business Resources:

- Hands-on business development
- Expert business advice and coaching
- Technical assistance
- Referrals to expert professionals

BSC Program Statistics – through Q2 2021:

- Number of business Contacts: 479
- Number of business Intakes/Assessments: 363
- Number of business referrals: 1145

The screenshot shows the website for the Metro Crenshaw/LAX Transit Project Business Solution Center. The header is green with the Metro logo and navigation links: Small Business Week, Events, About Us, Services, and Contact. Below the header, the text reads "CRENSHAW/LAX TRANSIT PROJECT BUSINESS SOLUTION CENTER". A carousel of images shows a man in a light blue shirt, a woman in a yellow shirt, and a woman in a yellow top. Below the carousel, the text reads "Learn More About the BSC...".

The Metro Crenshaw/LAX Transit Project Business Solution Center

Metro's Pilot Business Solution Center (BSC) provides hands-on business assistance and support services to small businesses along the Crenshaw/LAX corridor during the four-year term of the Crenshaw/LAX Transit Project. Small businesses along the corridor have access to the BSC for business and technical assistance including business development services and referrals to partnering business resource providers ([read more...](#)).

Business Solution Center COVID-19 Support

Support for businesses during COVID-19 Pandemic:

- Continued services via phone call, email and safely performed site visits throughout duration of the pandemic
- Client Engagement
 - Postcard Outreach
 - Over 300 postcards distributed
- Small business administration
 - SBA contact for outreach/support
 - Disaster loan funding
 - PPP funding
- Others



Metro's Business Interruption Fund



BIF Information and Eligibility

- Financial assistance to small “mom & pop” businesses with 25 or fewer full-time employees directly impacted by Metro Rail construction along three project areas:
 - Crenshaw/LAX Transit Project
 - Purple Line Extension, Sections 1, 2 & 3
 - Regional Connector Project, Little Tokyo area & 2nd/Broadway Segment*
- Businesses must be located immediately adjacent to the rail corridor and meet other eligibility requirements
- Grant amounts are determined by business revenue loss directly related to period of Metro construction disruption
- Businesses may receive up to \$50,000 per impact year



*Segment eligibility based on full street closure with duration greater than six continuous months. Eligibility ended 6/30/17.

Metro's Business Interruption Fund

Metro's Business Interruption Fund (BIF) is **accepting applications** for transit rail **construction impact** along the Crenshaw/LAX Transit Project, the Little Tokyo area of the Regional Connector and Sections 1, 2 and 3 of the Purple Line Extension **sustained from March 20, 2020, forward** (during the COVID-19 pandemic).

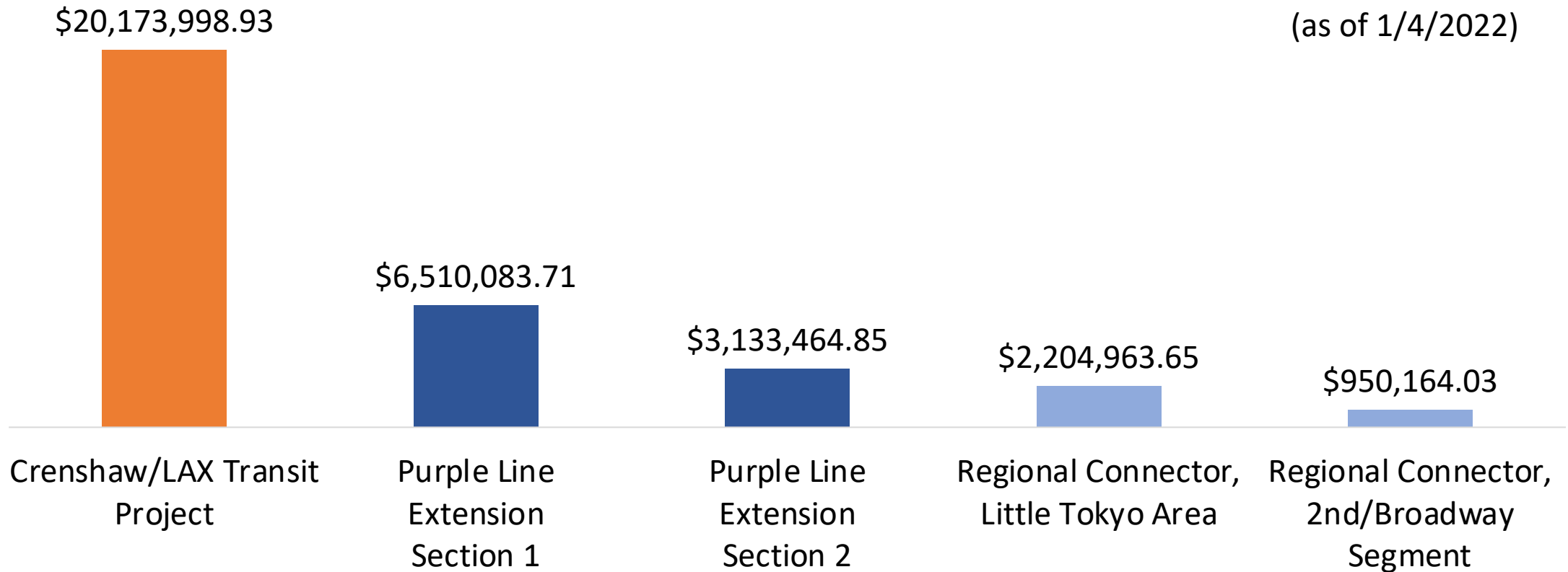
- **Small** “mom and pop” **businesses** that experienced transit rail construction impact during the COVID-19 pandemic **may be eligible**.
- Potentially eligible small business owners may *contact BIF Fund Administrator Pacific Coast Regional at 213.739.2999 x223 or Metro at bif@metro.net*.

Metro's Business Interruption Fund

Value of BIF Grants Awarded:
\$32,972,675.17*



(as of 1/4/2022)



*BIF Grants do not cover COVID-19 related impacts.

Business Interruption Fund

Crenshaw/LAX Transit Project



BIF Program Statistics: January 4, 2022:

- BIF applications submitted: **1608**
- BIF applications approved: **1342**
- BIF applications pending financials: **138**
- BIF applications deemed not eligible: **126**
- BIF applications denied: **2**
- BIF Grants Awarded: **1318**
- BIF Grant Payments: **\$32,972,675.17**

Crenshaw/LAX – BIF Statistics:

- **808** grants awarded to **C/LAX**
- Total amount: **\$20,173,998.93**
- **235** small businesses received a grant

Business Interruption Fund Crenshaw/LAX Transit Project



Learn More: [Families United Spotlight](#)

Eat Shop Play Crenshaw & Inglewood

Eat Shop Play highlights local mom and pop businesses in Crenshaw and Inglewood, especially eateries and specialty businesses operating pick-up and delivery during the past months.

The Eat Shop Play Crenshaw and Inglewood programs continue supporting local businesses as construction progresses by promoting them through regular social media posts and newsletters to over 14,000 community members.



Social Media Posts

 **Crenshaw/LAX Transit Project**
21 hrs · 🌐

Start the new year with a new wardrobe from [CoquetteKouture](#). Beautiful, one-of-a-kind, custom-made clothing and accessories for the entire family made with handmade fabric handmade. More than clothing, their pieces are wearable art.
#EatShopPlay #Inglewood
Support Local Businesses
<https://bddy.me/3zAWJO3>



January 2022 Facebook Spotlight



Crenshaw/LAX Rail @crenshawrail

now

Stock up on books for 2022 at [@EsoWon Books](#). Browse a finely curated selection of essential reads at this award-winning Black-owned bookstore.

#EatShopPlay #Crenshaw
Support Local Business
https://bddy.me/*****



January 2022 Twitter Spotlight

Seasonal Newsletter

Crenshaw & Inglewood



Selwyn Jewelers

Selwyn Jewelers original one-of-a-kind pieces are the perfect gift this holiday season. A family-owned and operated staple of Inglewood since 1962, their expert repair services will ensure your jewels will become family heirlooms.

323 E Regent St
(310) 673-2290



BHCP

Find the perfect gift while supporting local businesses at Baldwin Hills Crenshaw Plaza. With dozens of places to eat, shop, and play it's a winter wonderland of fun for everyone!

3650 W Martin Luther King Jr Blvd
(323) 290-6636

[Learn More](#)



Winter 2021 Newsletter Segment

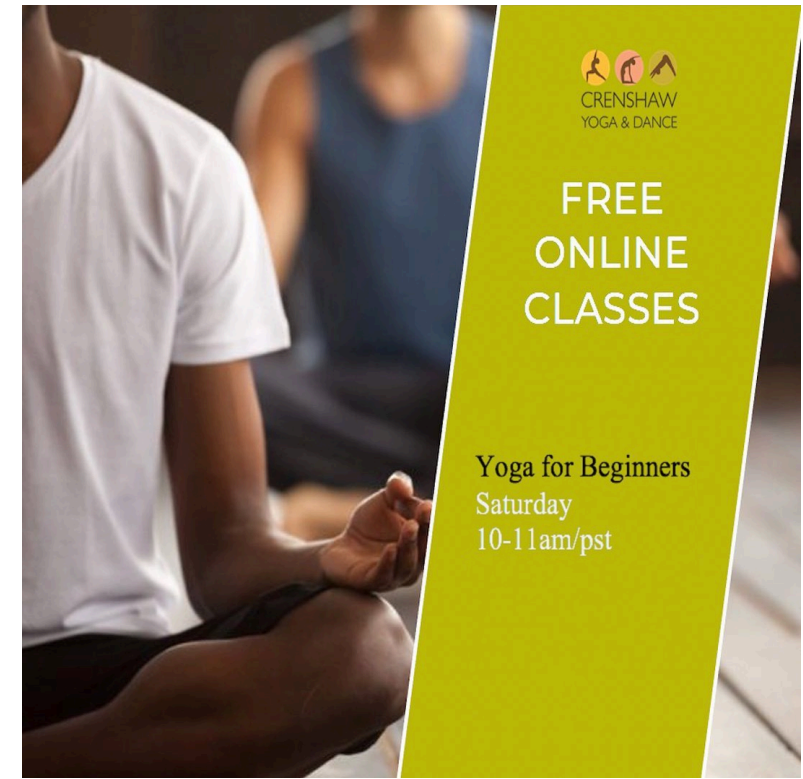
Featured Eat Shop Play Businesses

Crenshaw Yoga and Dance

- Established in 2004
- Low-cost in-person and virtual classes
- Free virtual Yoga for Beginners
- Promote health and well-being in Crenshaw
- Multi-use space rentals available.
- 5426 Crenshaw Bl
- [\(323\) 294-7148](tel:(323)294-7148)
- <https://crenshawyogaanddance.com/>



CRENSHAW
YOGA & DANCE



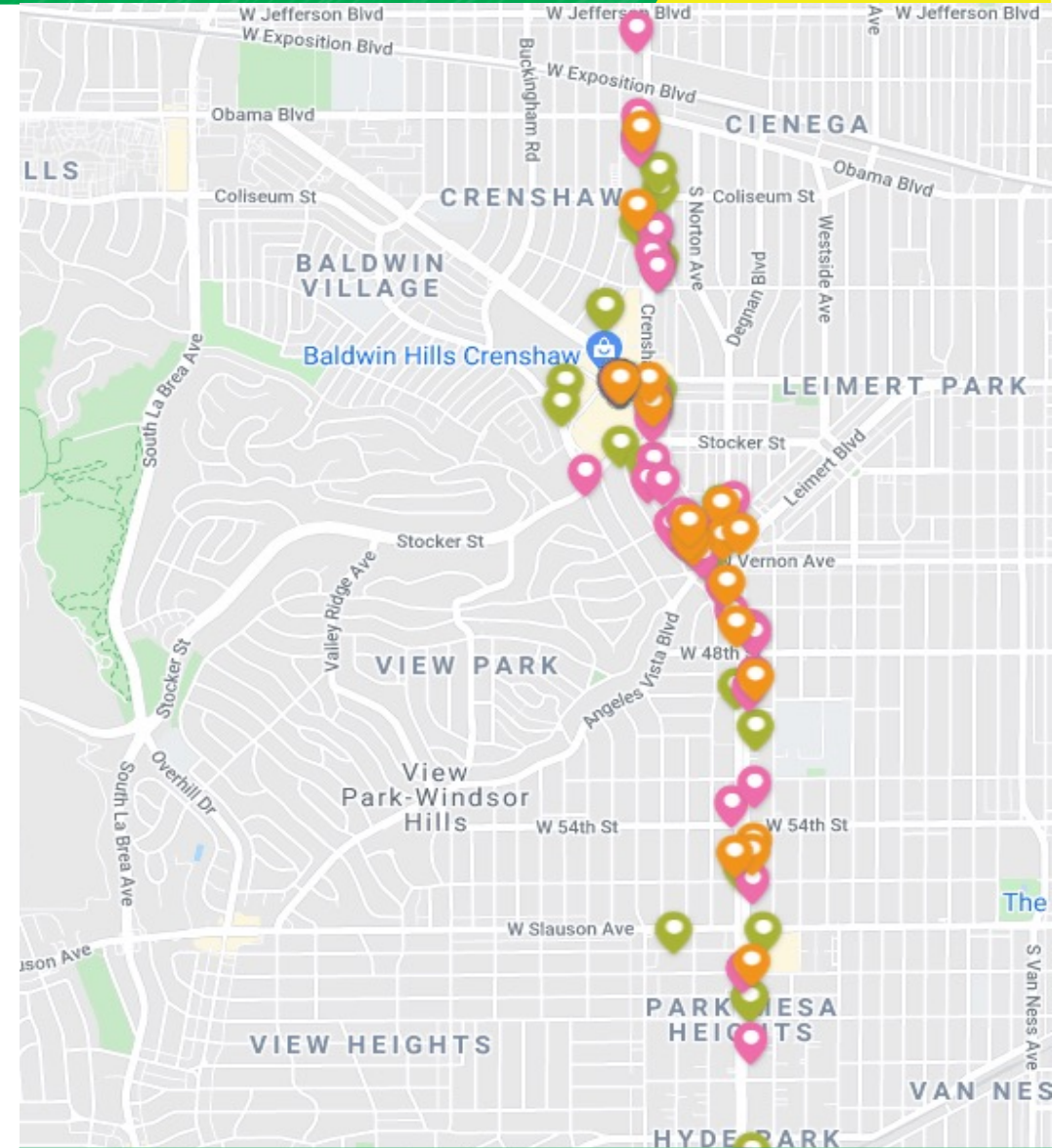
Eat Shop Play

ESP Business Spotlights:

- Metro Crenshaw/LAX Social Media Spotlights
- Regular Crenshaw/LAX Eat Shop Play email spotlights
- Referrals to Business Solution Center and Business Interruption Fund

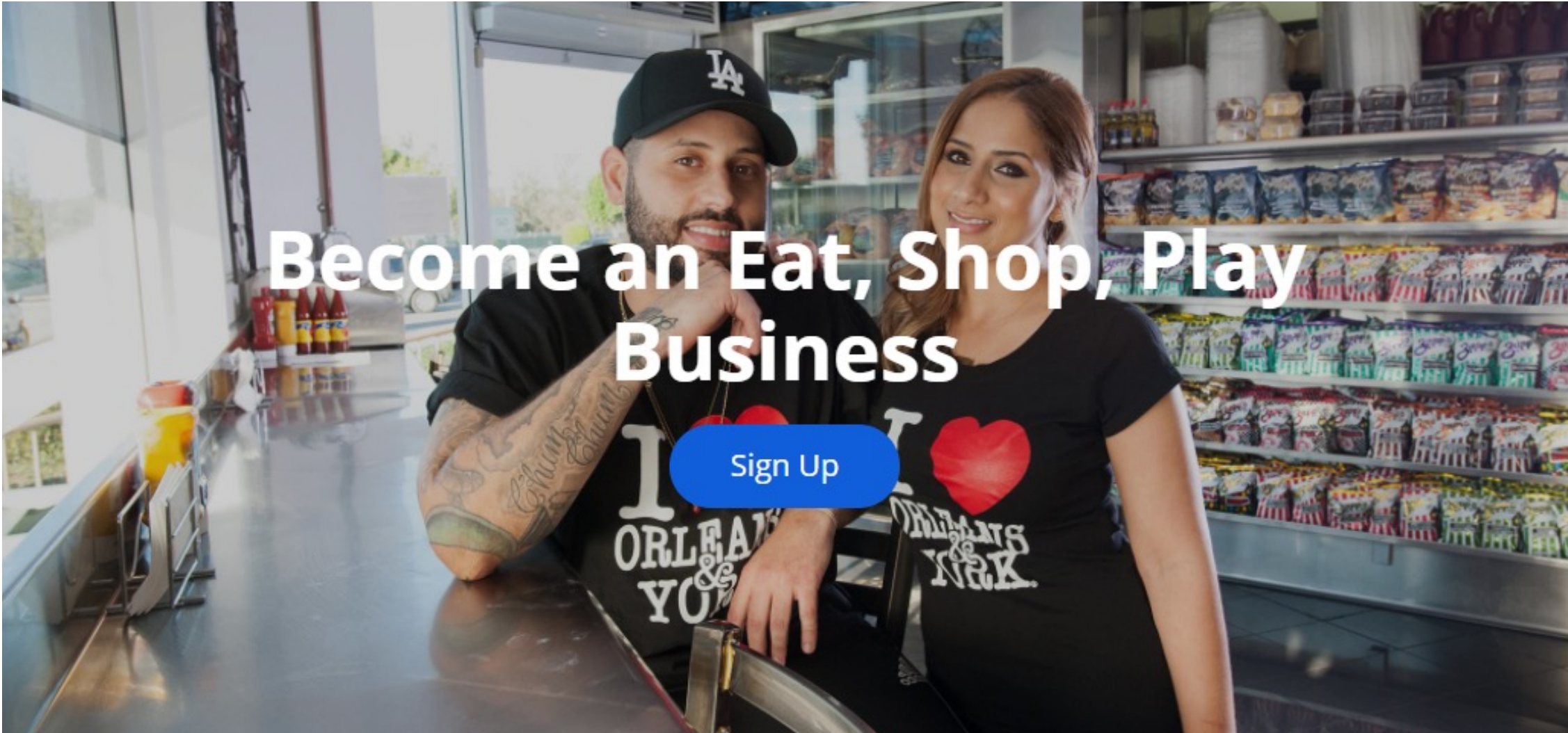
ESP Program Statistics: July 2020 – December 31, 2021:

- Number of Crenshaw/LAX Eat Shop Play businesses: 97
- Eat Shop Play Social Posts: 107
- Eblasts & Newsletters 31
- Total Individual Business features: 188



Map of Crenshaw Eat Shop Play Businesses

Enroll Your Business



metro.net/eatshopplay | eatshopplay@metro.net

Using Zoom & Submitting Questions



This meeting is being recorded. Video file will be posted on our web site at **metro.net/crenshaw**



Public video and mics are disabled. We cannot hear you or see you.



Please ask questions and submit comments via the Q&A feature.



Q&A

Thank You, Please Connect With Us



213.922.2736



crenshawcorridor@metro.net



metro.net/crenshaw



@crenshawrail



crenshawrail

Centinela Grade Separation



• Recent Activities

- Spring 2021: Initiated Preliminary Engineering (30% design)
- Fall 2021: Initiated Value Engineering
- Utility coordination with California Public Utilities Commission and Southern California Edison
- Construction coordination with Crenshaw/LAX project
- Coordination with South Bay COG, City of Inglewood and key stakeholders

• Next Actions

- Spring 2022: Board update on project status and delivery plans



Sample Rendering of Centinela Grade Separation (Source: HDR)